



Company: Chevron U.S.A., Inc.

Field Print

Well: OCS-G 24203 001 ST00BP00

Field: Atwater Block 13

Rig: Uncle John

State: Louisiana

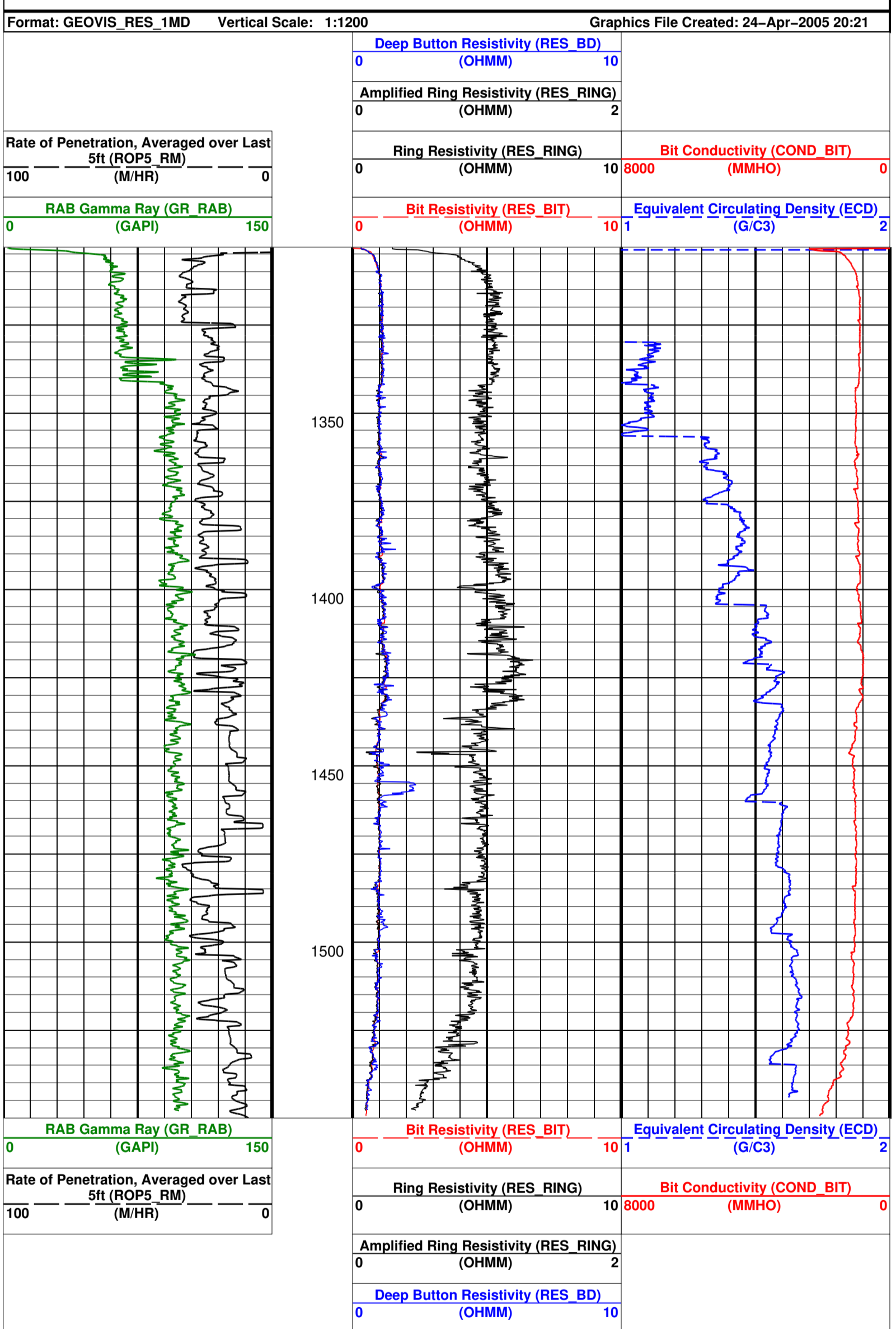
GeoVISION Resistivity  
1:1200 Measured Depth  
Recorded Mode

Rig: Uncle John  
Field: Atwater Block 13  
Location: X=901,438.19 ft, Y=10,148,521.8  
Well: OCS-G 24203 001 ST00BP00  
Company: Chevron U.S.A., Inc.

Location	
Total depth:	1550.00 m
Spud date:	19-April-05
Runs:	1 To 1
Permanent datum:	MEAN SEA LEVEL
Log measured from:	Kelly Bushing
Depth reference:	Driller's Depth
Elevation	K.B. 13.11 m G.L. -1290.60 m D.F. 12.68 m
Elev.:	0 m
13.11 m above Perm. datum	
API serial no.	
NAD 1927	Longitude
UTM Zone 16 N	W 89.28933
	Latitude
	N 27.94706
Other services:	
Mag decl: 0.35 deg.	APWD
Mag dip: 58.15 deg.	

Bore hole record		Casing record				
Hole size	from 1303.58 m	to 1550.00 m	Size	Density	from	to
8.5 in.						
Mud record		Borehole deviation record				
Type	from 1303.58 m	to 1550.00 m	Min	Max	from	to
Seawater			0.49 deg.	0.92 deg.	1335.00 m	1533.00 m
Surface equipment		Software record				
Unit	OLU-KA-9906	IDEAL Wis	ID10_2B_08			
Depth system	Geolograph	SPM	hspm10_1c_01			
		LWD	See Remarks			
		MWD	9.0_C00			

IDEAL Version: ID10\_2B\_08  
IDF



IDEAL Version: ID10\_2B\_08  
IDF

Company: Chevron U.S.A., Inc. **Schlumberger**

Well: OCS-G 24203 001 ST00BP00

Field: Atwater Block 13

Rig: Uncle John Field Print

State: Louisiana

**GeoVISION Resistivity  
1:1200 Measured Depth  
Recorded Mode**