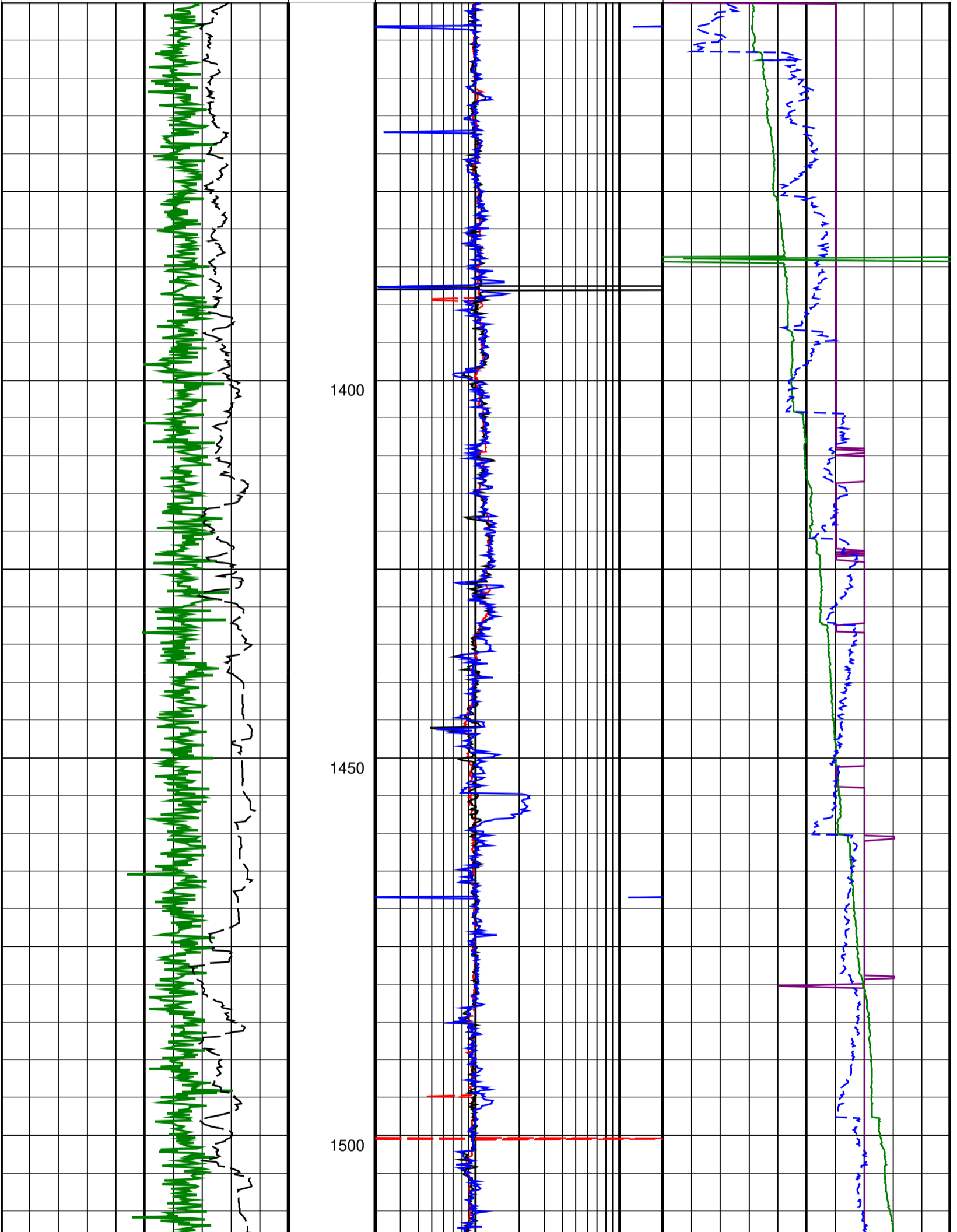


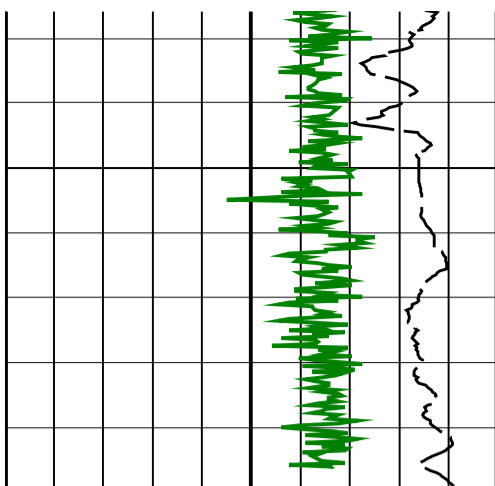
# DV6M\_5MD

IDEAL Version: ID10\_2B\_08 <MD > Vertical Scale: 1:600

Graphics File Created: 21-Apr-2005 10:08

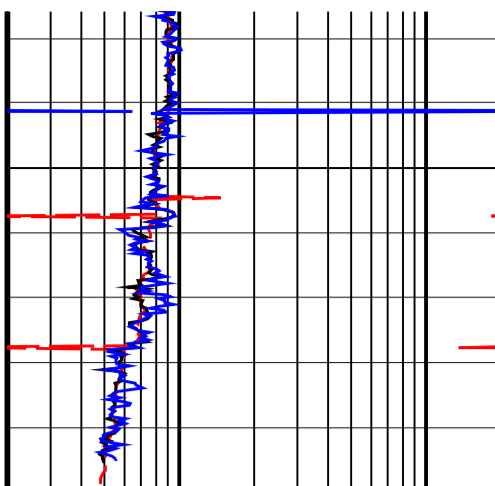
	<b>Deep Button Resistivity, Real-Time (RES_BD_RT)</b> 0.2 (OHMM) 20	<b>DVD ECD, Real-Time (ECD_ECO_RT)</b> 1 (G/C3) 2
<b>RAB Gamma Ray, Real-Time (GR_RAB_RT)</b> 0 (GAPI) 150	<b>Ring Resistivity, Real-Time (RES_RING_RT)</b> 0.2 (OHMM) 20	<b>Downhole Annulus Pressure, Real Time, Computed Downhole (DHAP_DH_ECO_RT)</b> 12000 (KPA) 18000
<b>ROP*5 (ROP5)</b> 100 (M/HR) 0	<b>Bit Resistivity, Real-Time (RES_BIT_RT)</b> 0.2 (OHMM) 20	<b>Downhole Annulus Temperature, Real Time, Computed Downhole (DHAT_DH_ECO_RT)</b> 0 (DEGC) 10





ROP\*5 (ROP5)  
100 (M/HR) 0

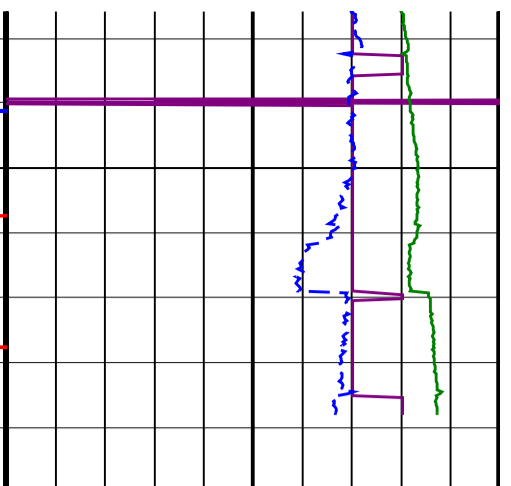
RAB Gamma Ray, Real-Time (GR\_RAB\_RT)  
0 (GAPI) 150



Bit Resistivity, Real-Time (RES\_BIT\_RT)  
0.2 (OHMM) 20

Ring Resistivity, Real-Time (RES\_RING\_RT)  
0.2 (OHMM) 20

Deep Button Resistivity, Real-Time (RES\_BD\_RT)  
0.2 (OHMM) 20



Downhole Annulus Temperature, Real Time, Computed Downhole (DHAT\_DH\_ECO\_RT)  
0 (DEGC) 10

Downhole Annulus Pressure, Real Time, Computed Downhole (DHAP\_DH\_ECO\_RT)  
12000 (KPA) 18000

DVD ECD, Real-Time (ECD\_ECO\_RT)  
1 (G/C3) 2