

Company: **Chevron U.S.A., Inc.**

Field Print

Well: **OCS-G 25212 001 ST00BP00**

Field: **Atwater Block 14**

Rig: **Uncle John**

State: **Louisiana**

**GeoVISION Resistivity
1:1200 Measured Depth
Recorded Mode**

Rig: Uncle John		Location: X=904,181.44 ft, Y=10,145,035.5	
Field: Atwater Block 14		Well: OCS-G 25212 001 ST00BP00	
Company: Chevron U.S.A., Inc.			
Total depth: 1600.00 m		K.B. 13.11 m	
Spud date: 22-April-05		G.L. 1300.28 m	
Runs: 1 To 1		D.F. 12.68 m	
Permanent datum: MEAN SEA LEVEL		Elev.: 0 m	
Log measured from: Kelly Bushing		13.11 m above Perm. datum	
Depth reference: Driller's Depth			
API serial no. NAD 1927	Longitude W 89.28064	Latitude N 27.93761	
UTM Zone 16 N	Other services: APWD		
Depth logged: 1313.39 m To 1599.32 m	Mag decl: 0.34 deg.		
Date logged: 22-Apr-05 To 23-Apr-05	Mag dip: 58.14 deg.		

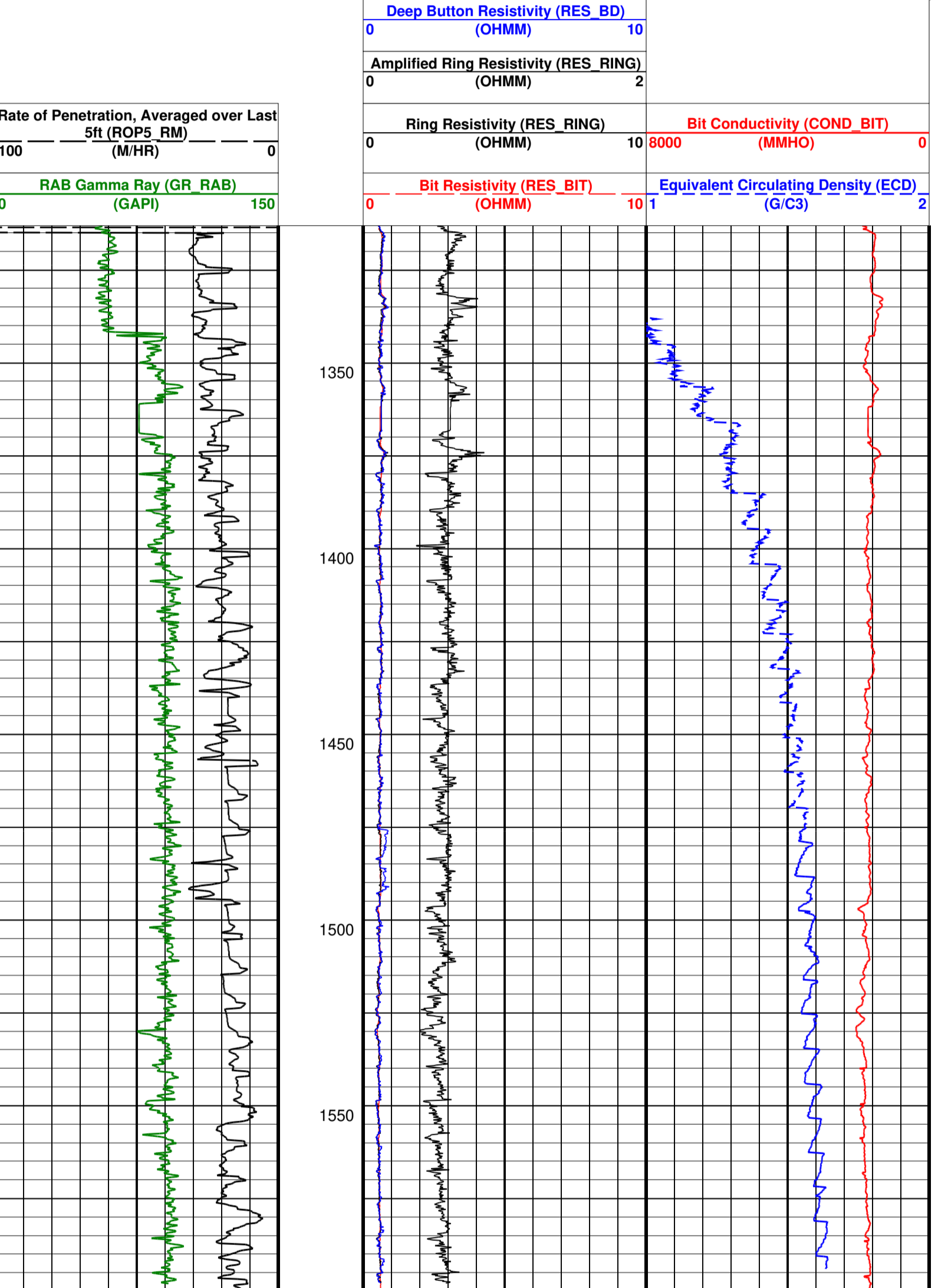
Bore hole record		Casing record	
Hole size	from 1313.39 m	to 1600.00 m	
8.5 in.			
Type	Mud record	to	Borehole deviation record
Seawater	from 1313.39 m	to 1600 m	Min 0.29 deg.
			Max 1.79 deg.
			from 1344.50 m
			to 1583 m
Surface equipment		Software record	
Unit	OLLU-KA-9906	IDEAL WIS	ID10_2B_08
Depth system	Geograph	SPM	hspn10_1c_01
		LWD	See Remarks
		MWD	9_0_C00

IDEAL Version: ID10_2B_08

IDF

RAB id10_2b_08 ECO6 id10_2b_08
MWD_10 id10_2b_08 MRT id10_2b_08
ADN id10_2b_08

Format: GEOVIS_RES_1MD Vertical Scale: 1:1200 Graphics File Created: 25-Apr-2005 08:57



IDEAL Version: ID10_2B_08

IDF

RAB id10_2b_08 ECO6 id10_2b_08
MWD_10 id10_2b_08 MRT id10_2b_08
ADN id10_2b_08

Company: **Chevron U.S.A., Inc.**

Well: **OCS-G 25212 001 ST00BP00**

Field: **Atwater Block 14**

Rig: **Uncle John**

Field Print

State: **Louisiana**

**GeoVISION Resistivity
1:1200 Measured Depth
Recorded Mode**