



**GEOFRAME
PROCESSED
INTERPRETATION**

SonicVISION Well A

BestDT Leaky-P DT

*A Mark of Schlumberger

Using the following logs: SonicVISION

COMPANY: Chevron U.S.A., Inc.
WELL: JIP II AC 21 A
FIELD: Alaminos Canyon
County: Louisiana
State: Louisiana
COUNTRY: U.S.A.
Date Logged: 03-May-2009 **Date Processed:** 7-May-2009
Well Location: NAD27 15N, ft.
 X = 1021448.00 ft
Elevations: **KB:** **DF:** 51ft **GL:** -4889ft
API Number: 608054007000 **Job Number:**

FOLD HERE The well name, location and borehole reference data were furnished by the customer.

All interpretations are opinions based on inferences from electrical or other measurements and we cannot, and do not guarantee the accuracy or correctness of any interpretation, and we shall not, except in the case of gross or willful negligence on our part, be liable or responsible for any loss, costs, damages or expenses incurred or sustained by anyone resulting from any interpretations made by any of our officers, agents or employees. These interpretations are also subject to Clause 4 of our General Terms and Conditions as set out in our current Price Schedule.

Field Recording:	Location: Upper Module	Software Version: 20C0-999	Engineer:
Office Recording:	ICS Center: Lafayette	Baseline:	Log Analyst: Bill Lawton

Mud and Borehole Measurements:

Rm @ Measured Temperature: 0.23ohm.m @ 57degF	BHT: 50degF	Bitsize: 8.5in
Rmf @ Measured Temperature: 0.23ohm.m @ 57degF	Type Fluid in Hole:	WBM
Rmc @ Measured Temperature: 0.23ohm.m @ 57degF	Mud Density: 10.5lbm/gal	

Remarks:

WF VDL



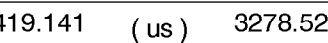
300 (us) 3278

TICO



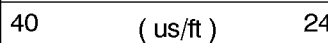
300 (us) 3278

STPLR4@BestDT-3;7



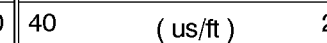
40 (us/ft) 240

STPrR



40 (us/ft) 240

SfaR



40 (us/ft) 240

MD 1 : 240 ft

GRMA_FILT



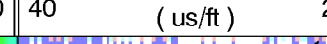
0 (gAPI) 150

DTRP



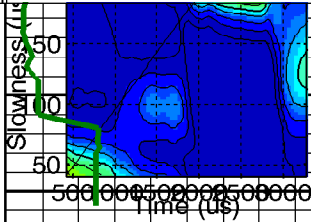
40 (us/ft) 240

DTRP

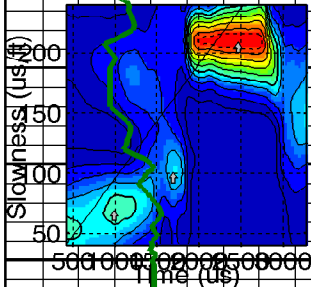


40 (us/ft) 240

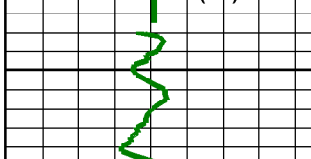
4950



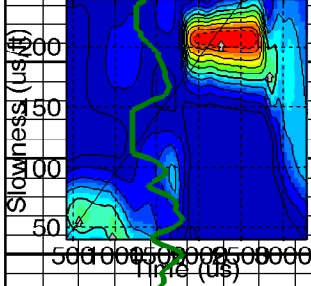
(Depth = 4986.01 ft)



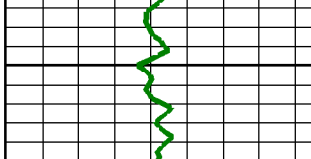
5000



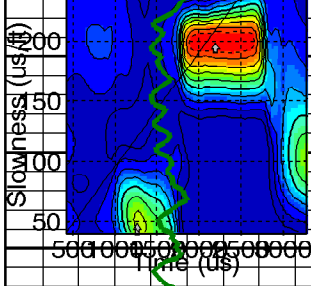
(Depth = 5036.01 ft)



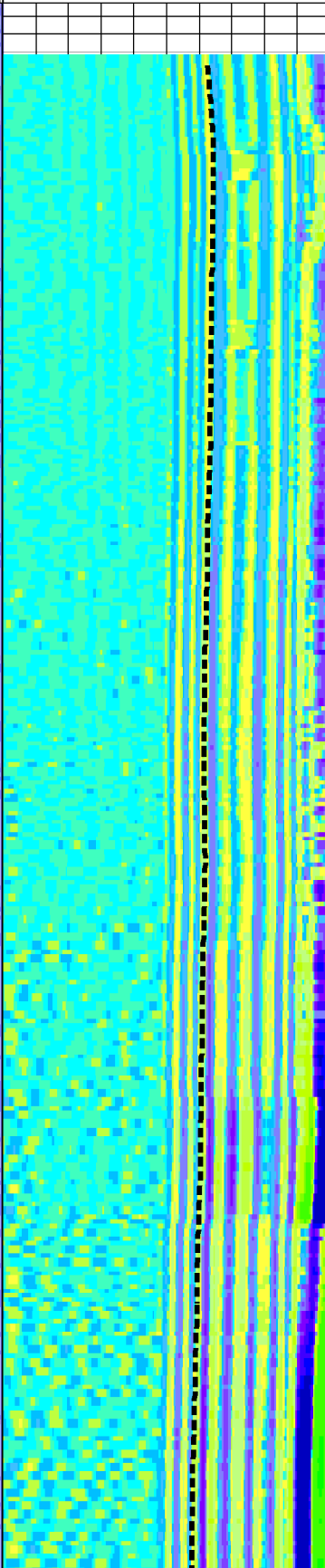
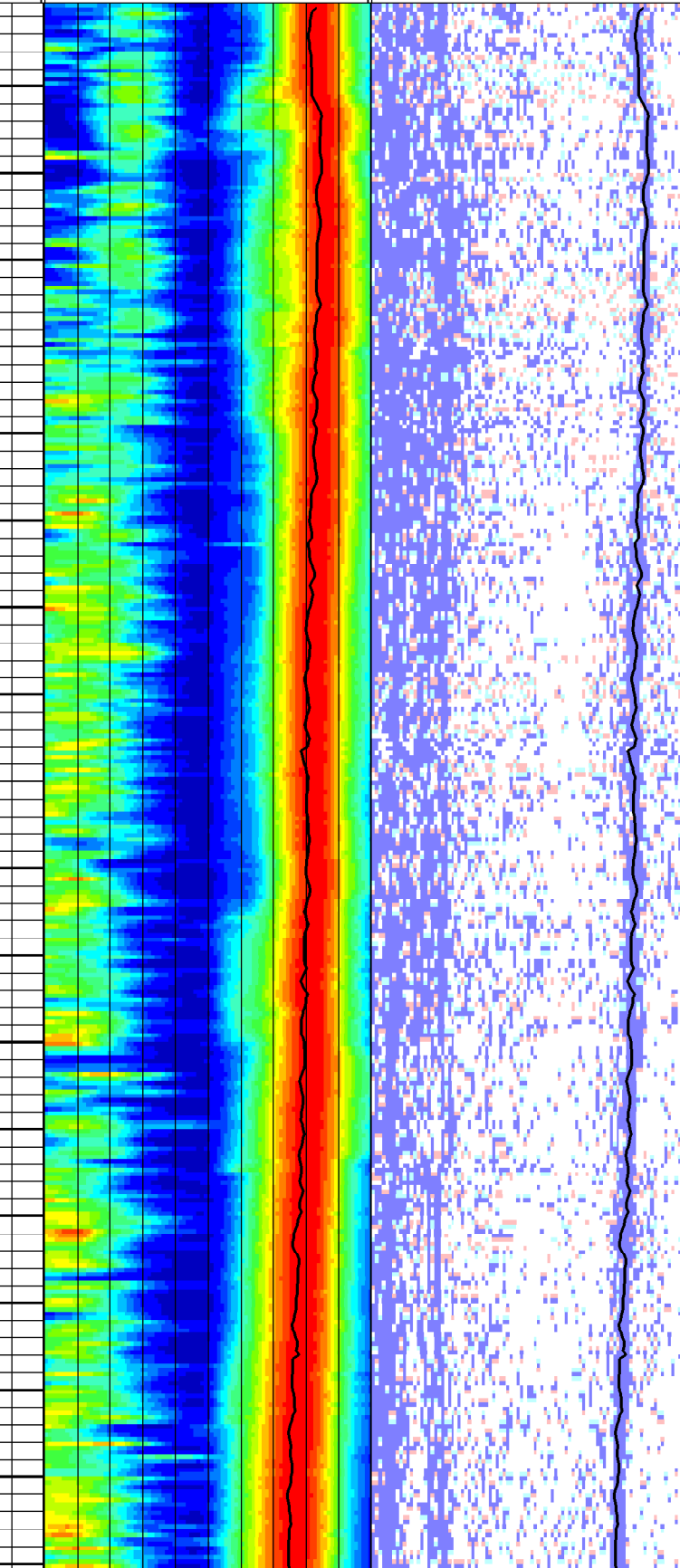
5050



(Depth = 5086.01 ft)

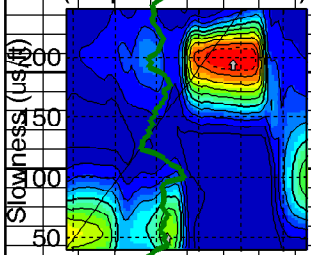


5100



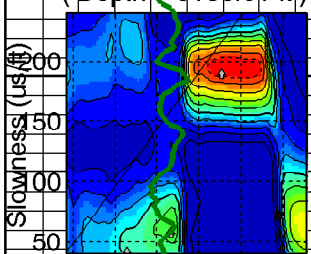
5150

(Depth = 5136.01 ft)



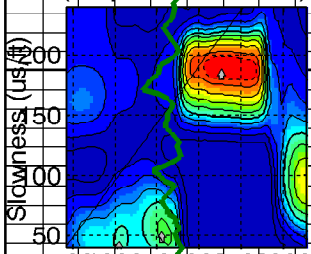
5200

(Depth = 5186.01 ft)



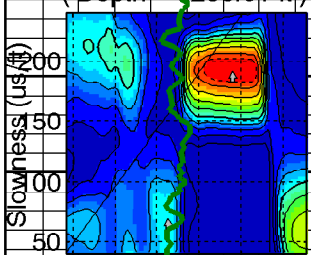
5250

(Depth = 5236.01 ft)

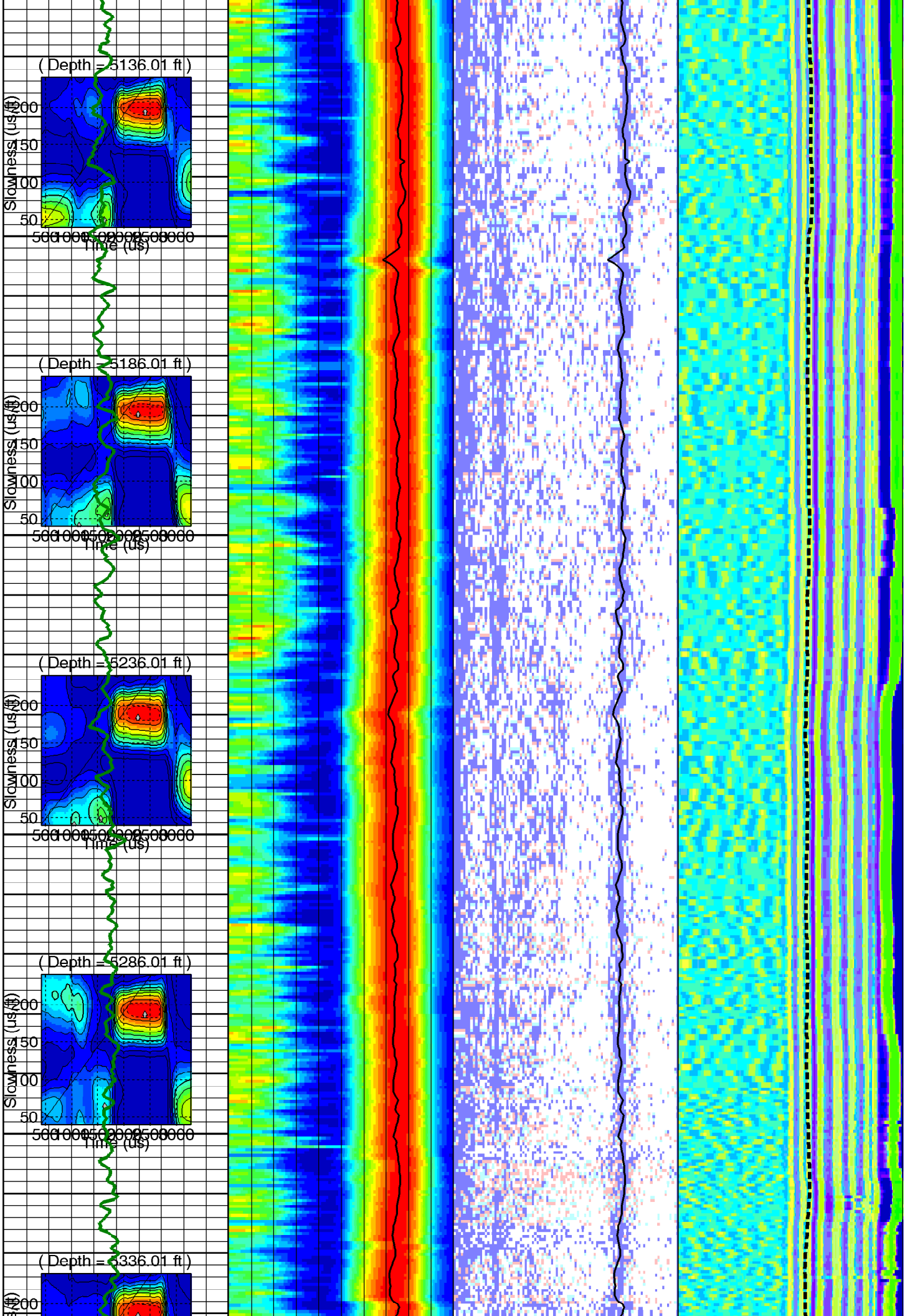
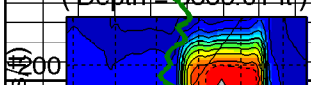


5300

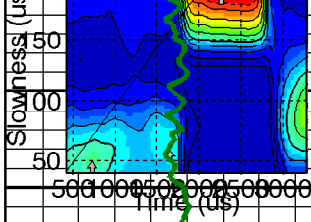
(Depth = 5286.01 ft)



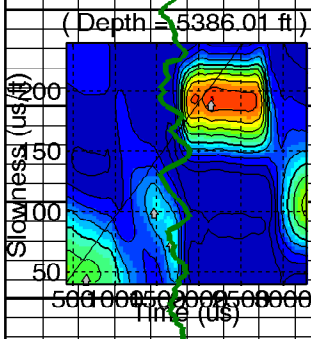
(Depth = 5336.01 ft)



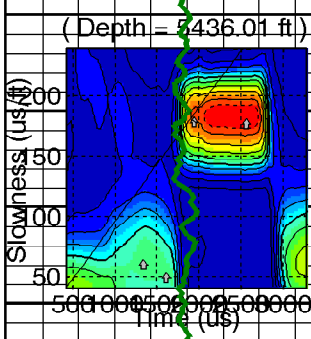
5350



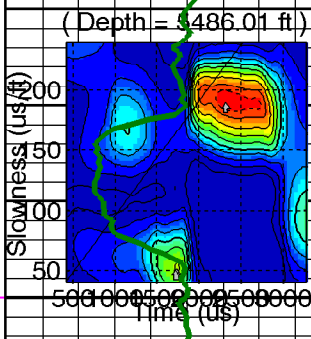
5400



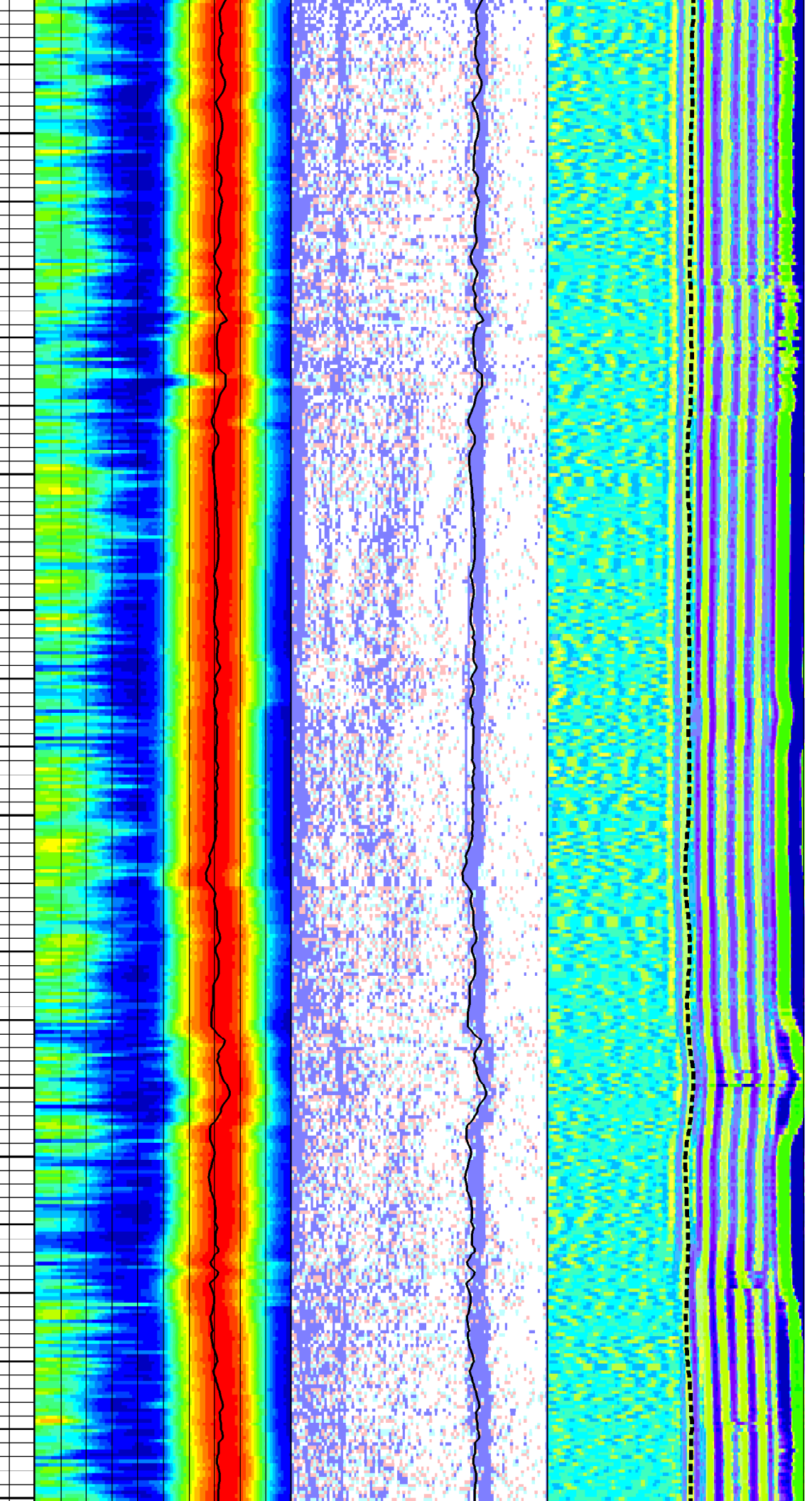
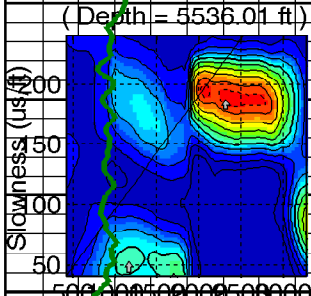
5450

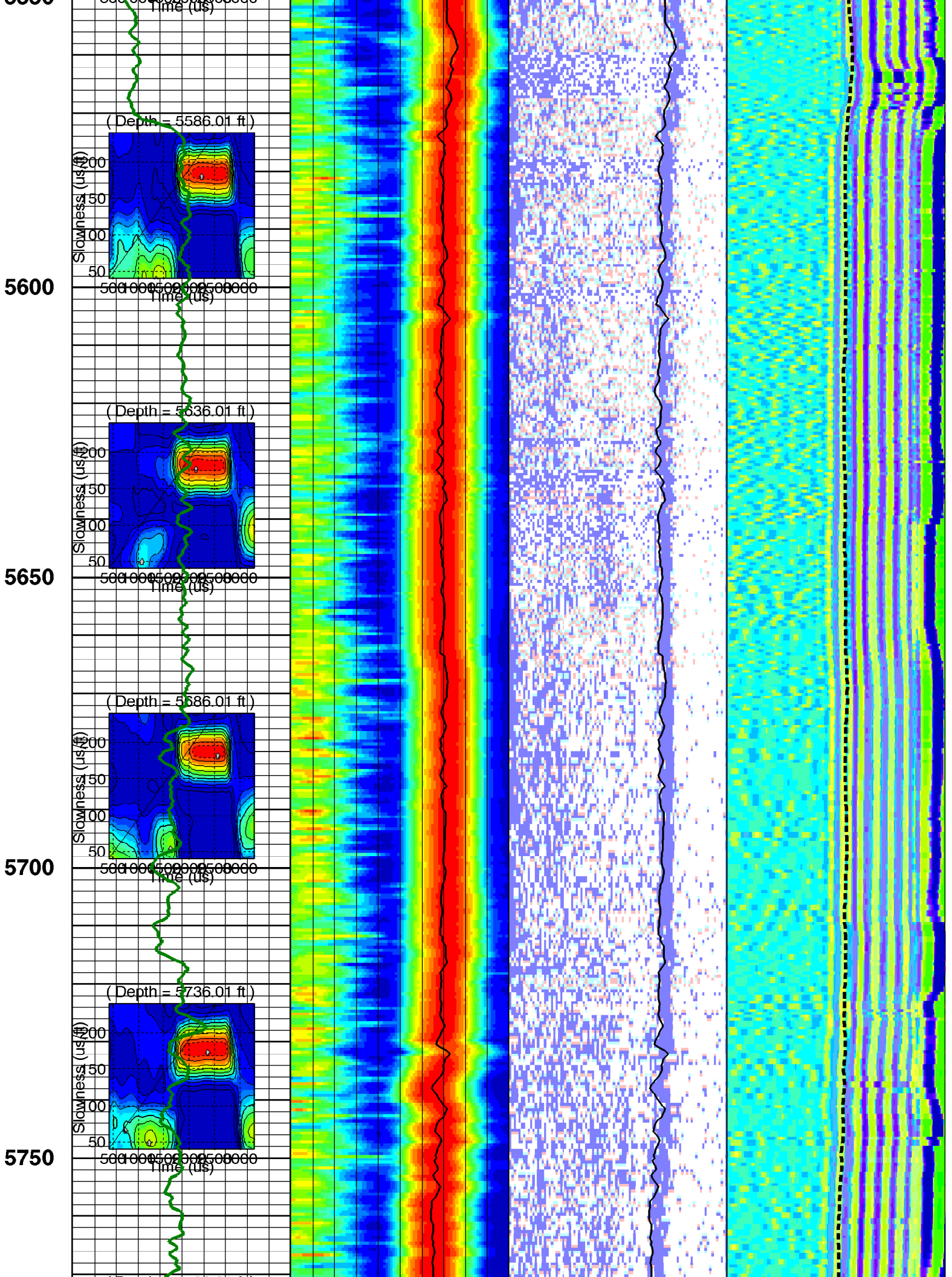


Very Slow
5500
Very Slow



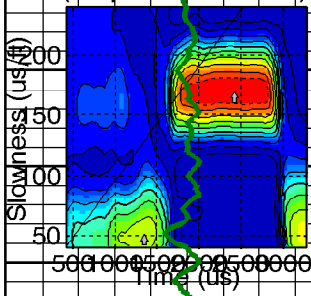
5550





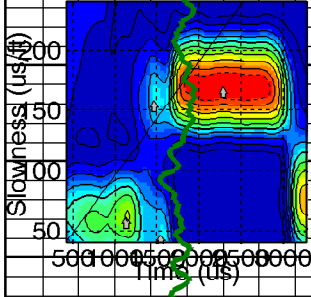
5800

(Depth= 5786.01 ft.)



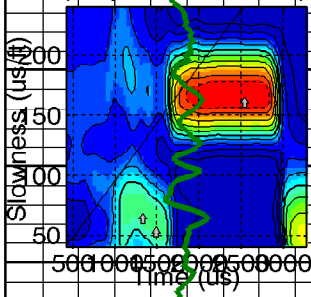
5850

(Depth= 5836.01 ft.)



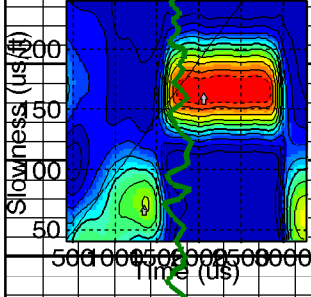
5900

(Depth= 5886.01 ft.)

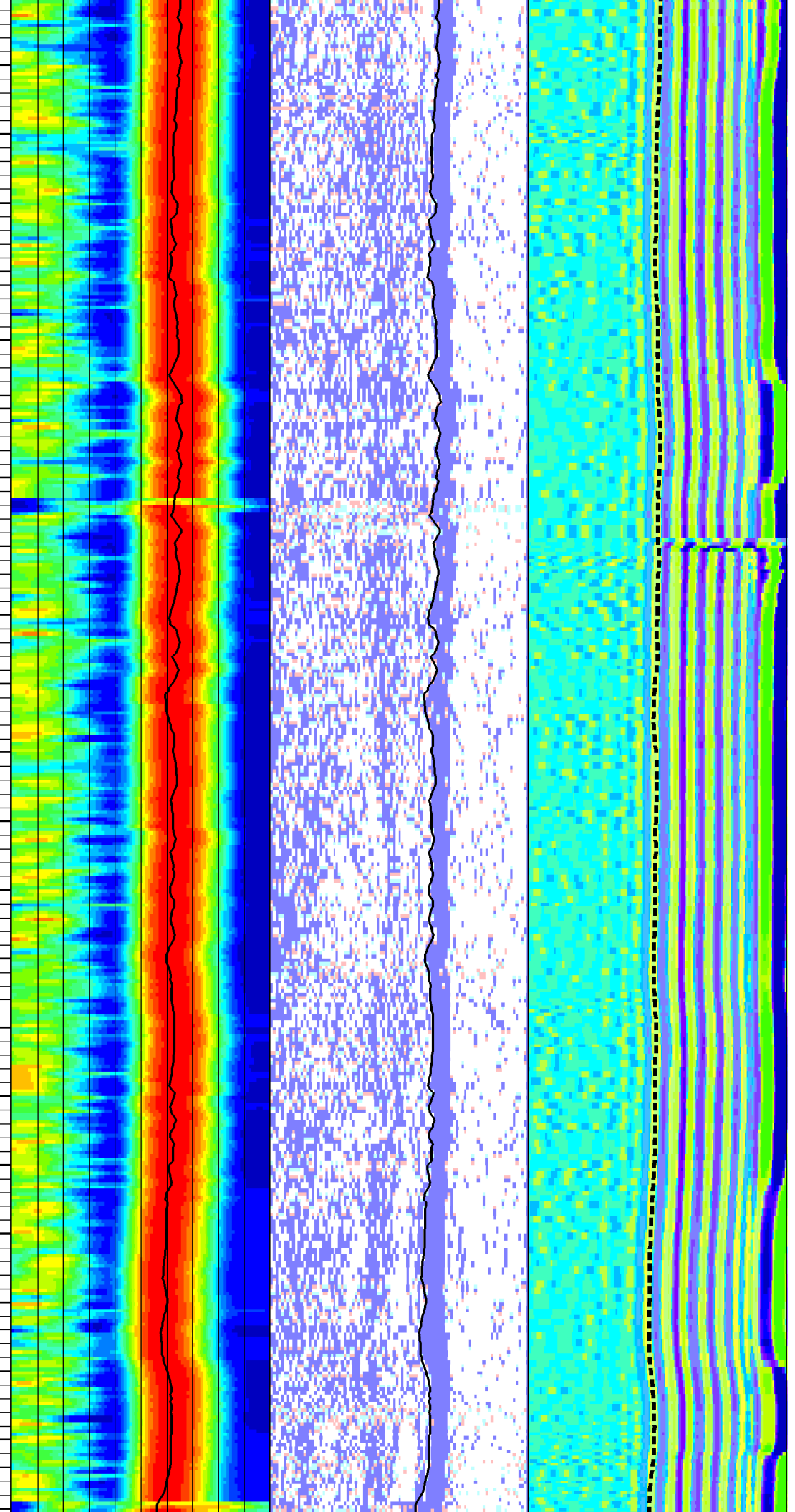
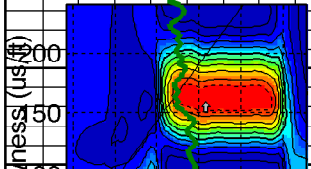


5950

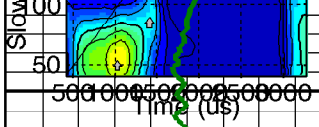
(Depth= 5936.01 ft.)



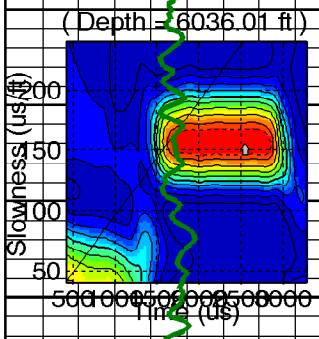
(Depth= 5986.01 ft.)



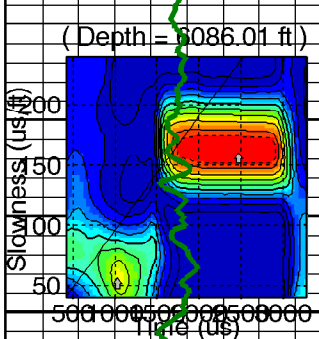
6000



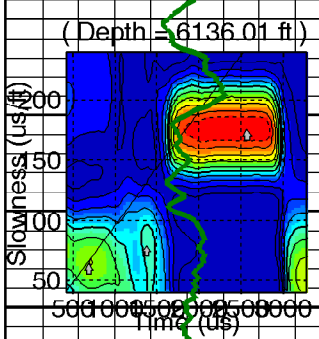
6050



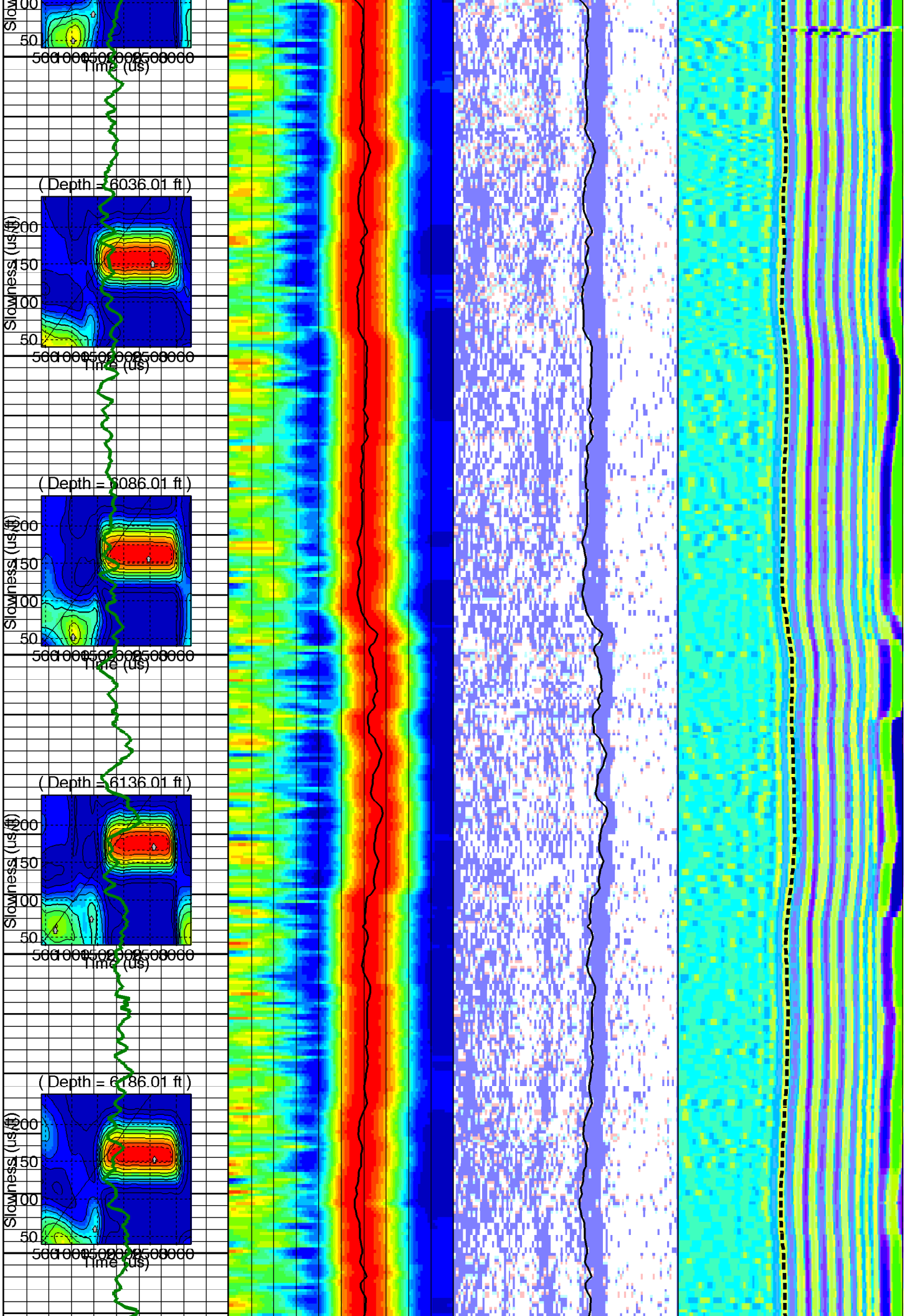
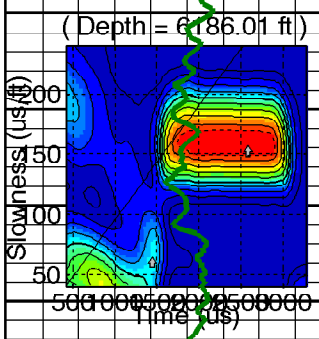
6100



6150

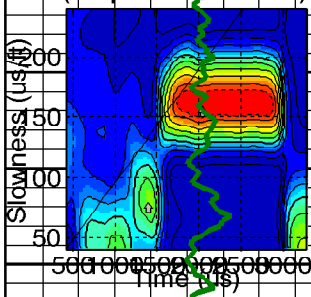


6200



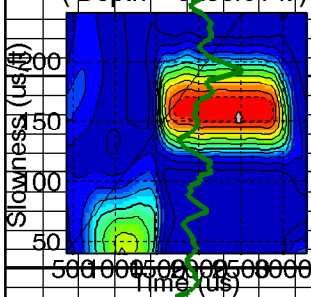
6250

(Depth = 6236.01 ft)



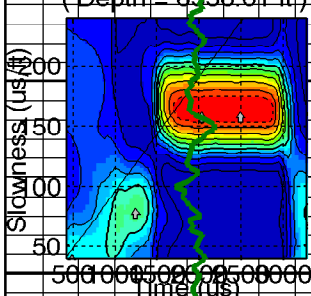
6300

(Depth = 6236.01 ft)



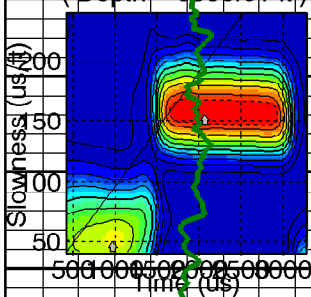
6350

(Depth = 6336.01 ft)

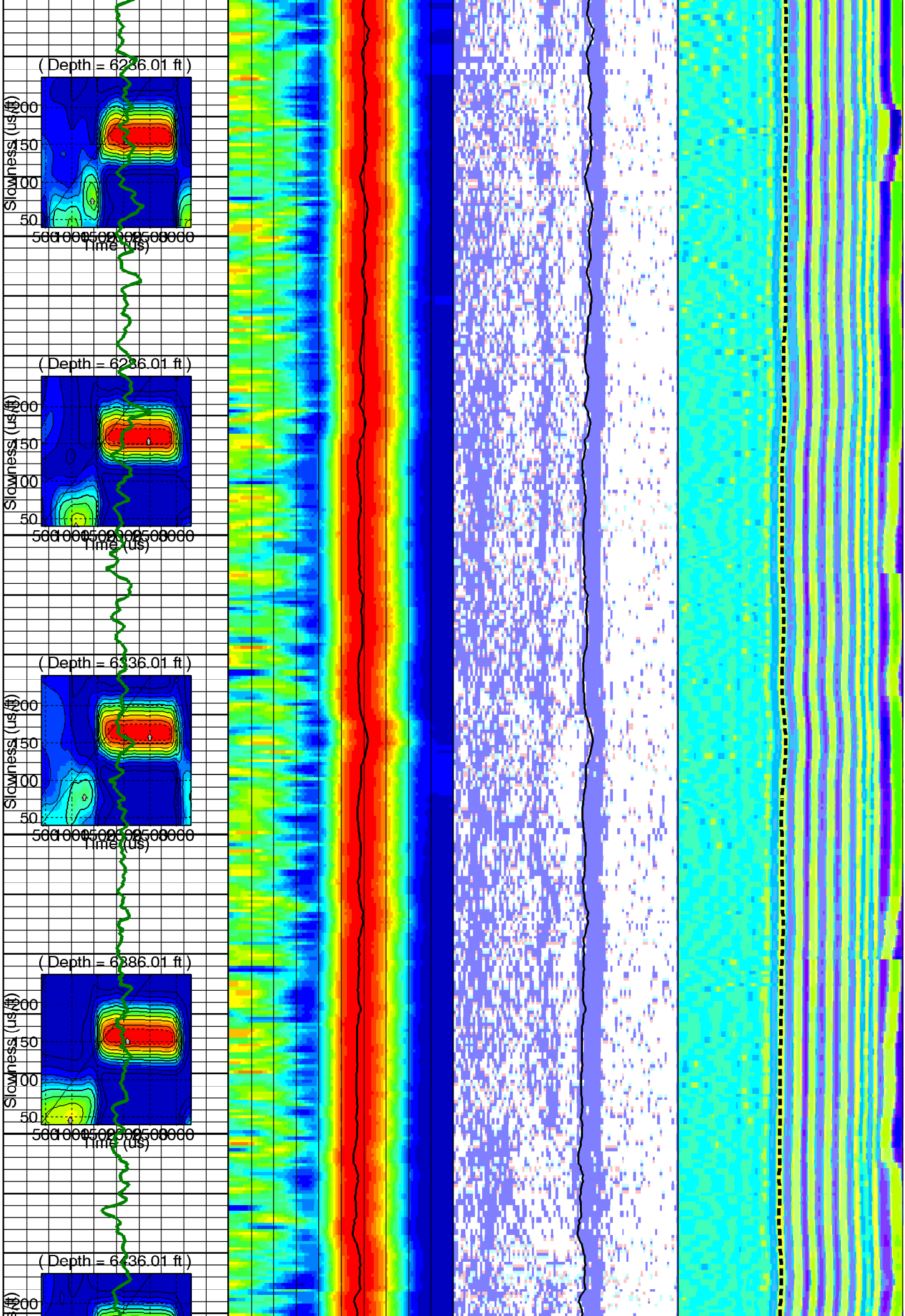
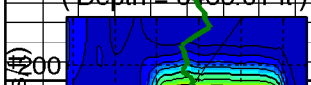


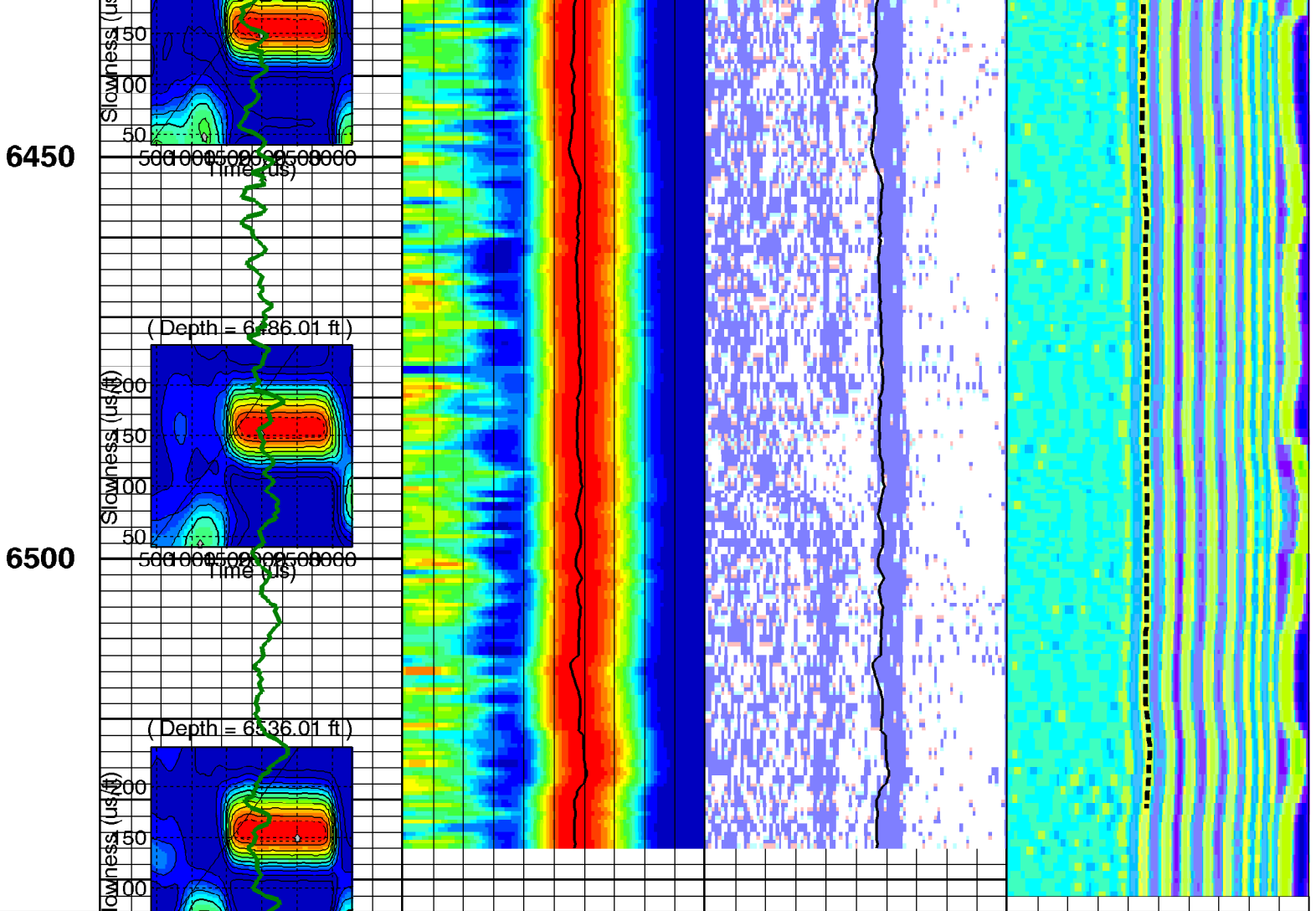
6400

(Depth = 6386.01 ft)



(Depth = 6436.01 ft)





Customized Process: Start Depth (6536.01 ft), Stop Depth (4930.51 ft), Logging Mode (ISONIC - MPS_VSLP)
 Noise Cut Filtering(No), Casing Cut Filtering(No)
 WF_FLG(1 1 1), MUD_TYPE(WBM), DTMUD(205), STCAL(Full Array)
 TRSPAC(9.85), RRSPAC(0 0.666667 1.33333 2)
 Hole Diameter (no input)
 Zoning Guide (no input)
 Tracking Guide (no input)

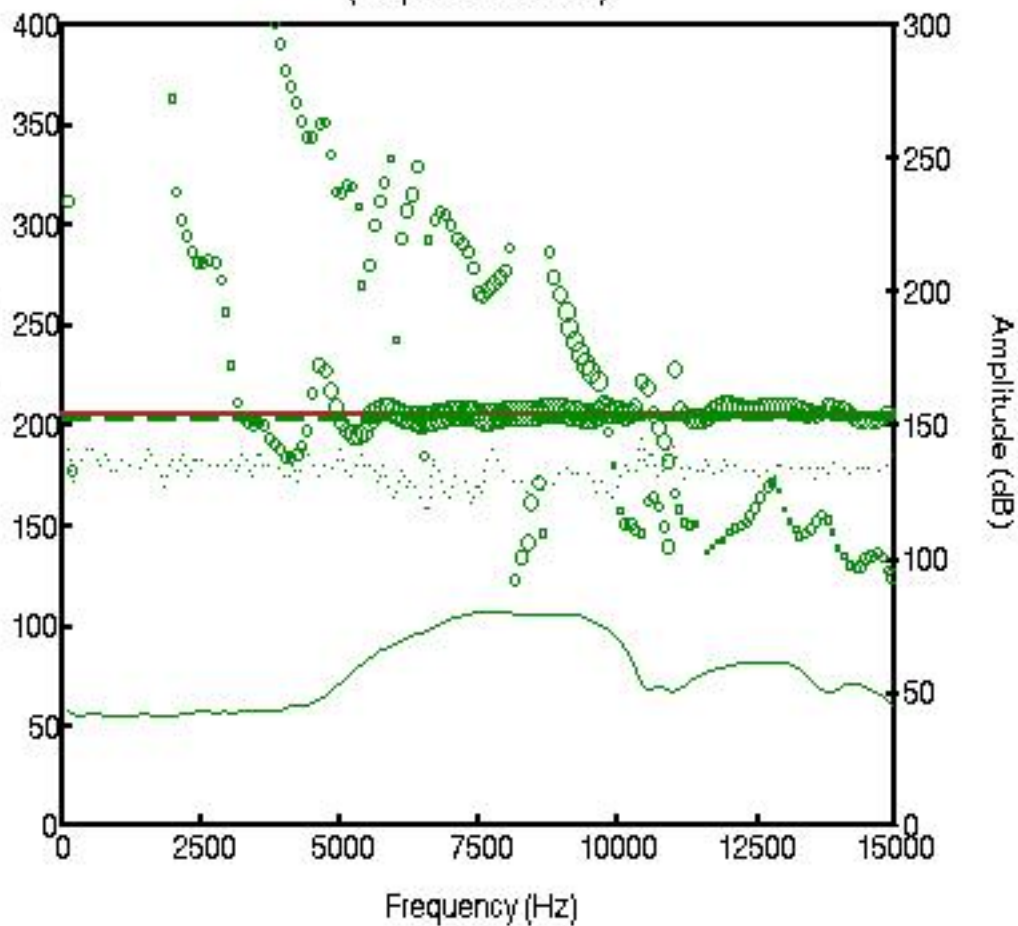
--- Zone Top Depth (0), Zone Name (Zone1) ---
 SFTY(Very Slow), BHS(OPEN), CSIZ(7), HDM(Fix*), HD(8.5), DFNM(Vp/Vs Based*), DFVPVS(5*)
 TWI(595.703*), SLL(40.4227), SUL(240.409), SST(2.12751), TLL(419.141), TUL(3278.52), TST(39.7135)
 SBW(1600*), SBO(550), SWD(20), TWD(900), SEM(0.45), FLENG(49*), FLOW(2500*), FHIGH(4000*)
 TKO_MODEL_ORDER(2), TKO_TOL(50) TKO_FLOW(0), TKO_FHIGH(12000)

--- Zone Top Depth (5500), Zone Name (1) ---
 SFTY(Very Slow), BHS(OPEN), CSIZ(7), HDM(Fix*), HD(8.5), DFNM(Vp/Vs Based*), DFVPVS(4*)
 TWI(595.703*), SLL(40.4227), SUL(240.409), SST(2.12751), TLL(419.141), TUL(3278.52), TST(39.7135)
 SBW(1600*), SBO(550), SWD(20), TWD(900), SEM(0.45), FLENG(49*), FLOW(2500*), FHIGH(4000*)
 TKO_MODEL_ORDER(2), TKO_TOL(50) TKO_FLOW(0), TKO_FHIGH(12000)

MD 1 : 240 ft	GRMA_FILT	DTRP	DTRP	
	0 _____ 150 (gAPI)	40 _____ 240 (us/ft)	40 _____ 240 (us/ft)	
	STPLR4@BestDT-3;7	STPrjR	SfaR	
	419.141 (us) 3278.52	40 (us/ft) 240	40 (us/ft) 240	
				TICO ----- 300 (us) 3278
				WE VDI

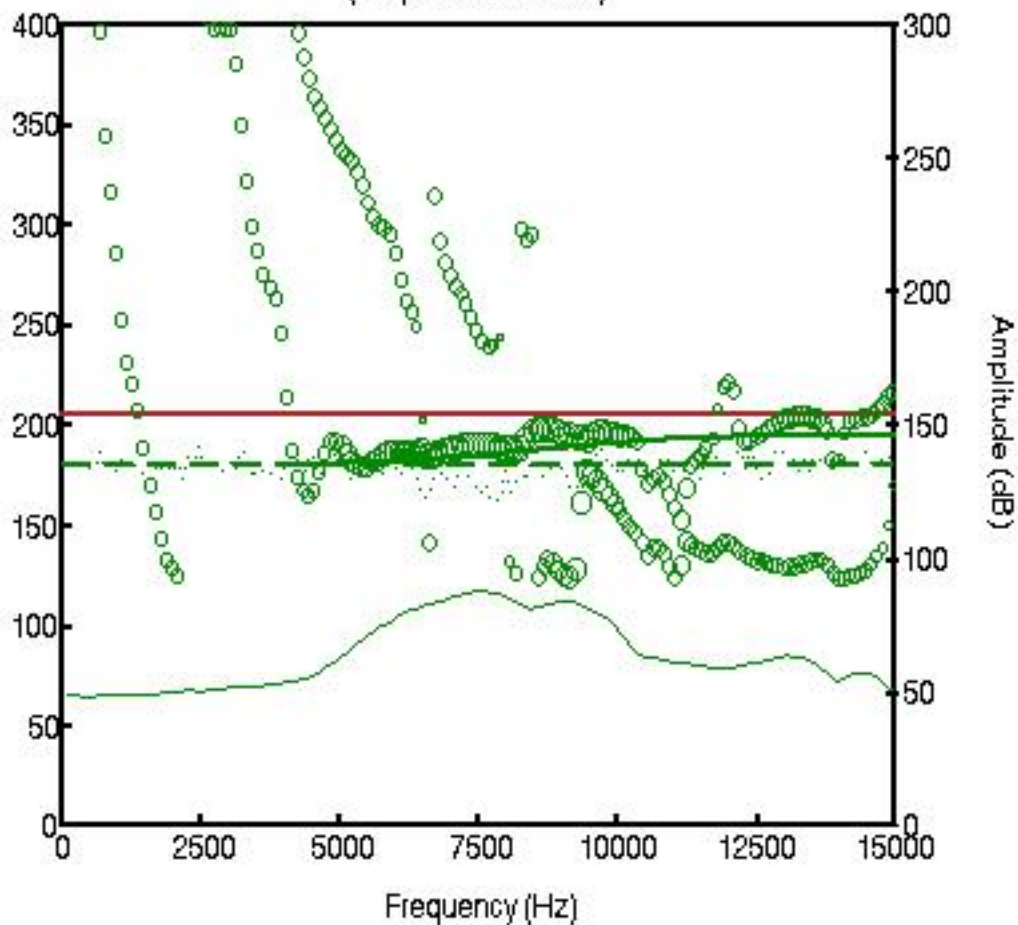
Slowness Dispersion Plot

(Depth = 5000.01 ft)



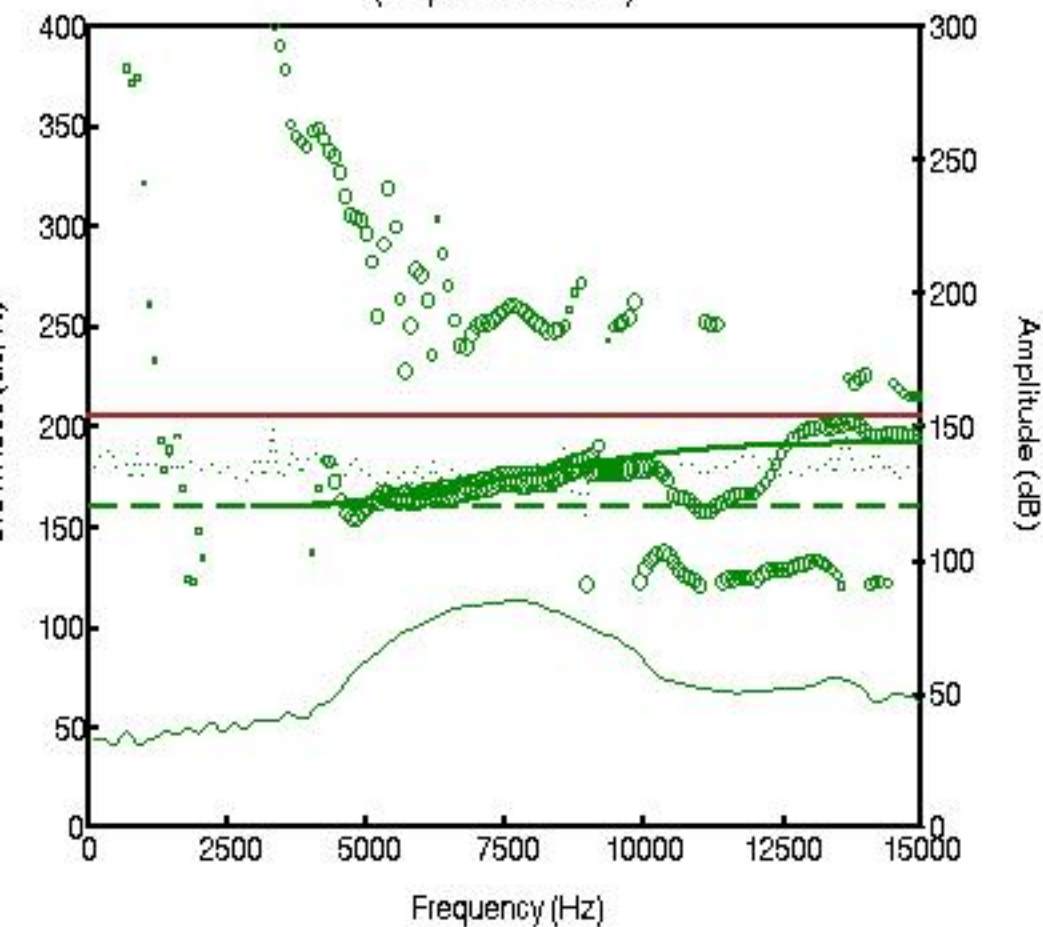
Slowness Dispersion Plot

(Depth = 5500.01 ft)



Slowness Dispersion Plot

(Depth = 6000.01 ft)



Slowness Dispersion Plot

(Depth = 6500.01 ft)

