



**GEOFRAME
PROCESSED
INTERPRETATION**

BestDT* QC Plot – MP3

MH Leaky–P Processing

* A Mark of Schlumberger

Using the following logs: MP3

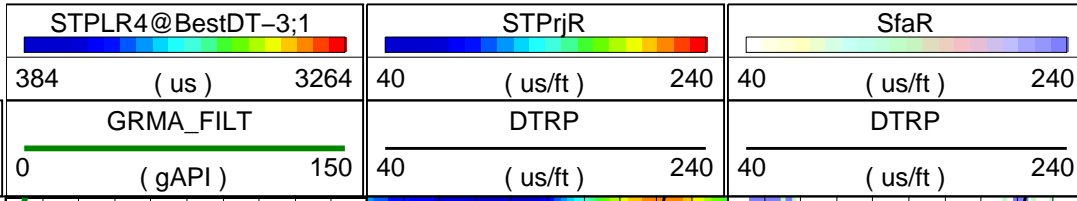
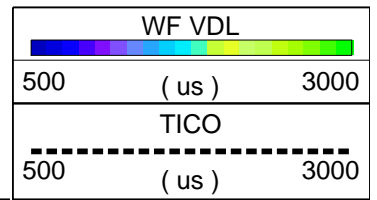
COMPANY: Chevron U.S.A., Inc.
WELL: JIP II AC 21 A
FIELD: Alaminos Canyon
County: Louisiana
State: Louisiana
COUNTRY: U.S.A.
Date Logged: 03-May-2009 **Date Processed:** 5-May-2009
Well Location: NAD27 15N, ft.
 X = 1021448.00 ft
Elevations: **KB:** **DF:** 51ft **GL:**
API Number: 608054007000 **Job Number:**

FOLD HERE The well name, location and borehole reference data were furnished by the customer.

All interpretations are opinions based on inferences from electrical or other measurements and we cannot, and do not guarantee the accuracy or correctness of any interpretation, and we shall not, except in the case of gross or willful negligence on our part, be liable or responsible for any loss, costs, damages or expenses incurred or sustained by anyone resulting from any interpretations made by any of our officers, agents or employees. These interpretations are also subject to Clause 4 of our General Terms and Conditions as set out in our current Price Schedule.

Field Recording:	Location: Upper Module	Software Version: 20C0-999	Engineer:
Office Recording:	ICS Center: Lafayette	Baseline:	Log Analyst: Bill Lawton
Mud and Borehole Measurements:			
Rm @ Measured Temperature: 26ohm.m @ 50degF	BHT: 50degF	Bitsize: 6.75in	
Rmf @ Measured Temperature: 26ohm.m @ 50degF	Type Fluid in Hole:	WBM	
Rmc @ Measured Temperature: 26ohm.m @ 50degF	Mud Density: 8.53lbm/gal		

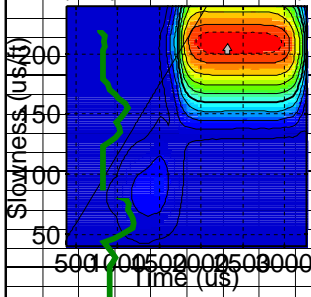
Remarks:



MD
1 : 240
ft

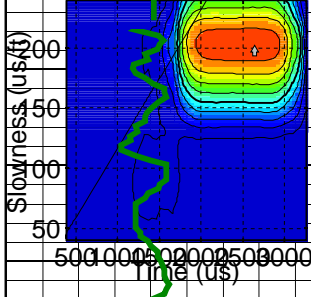
4950

(Depth = 4965.35 ft)



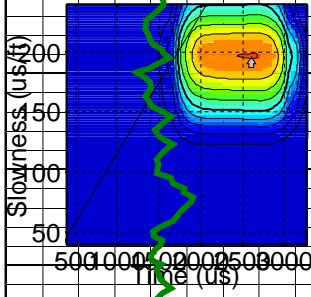
5000

(Depth = 5015.35 ft)



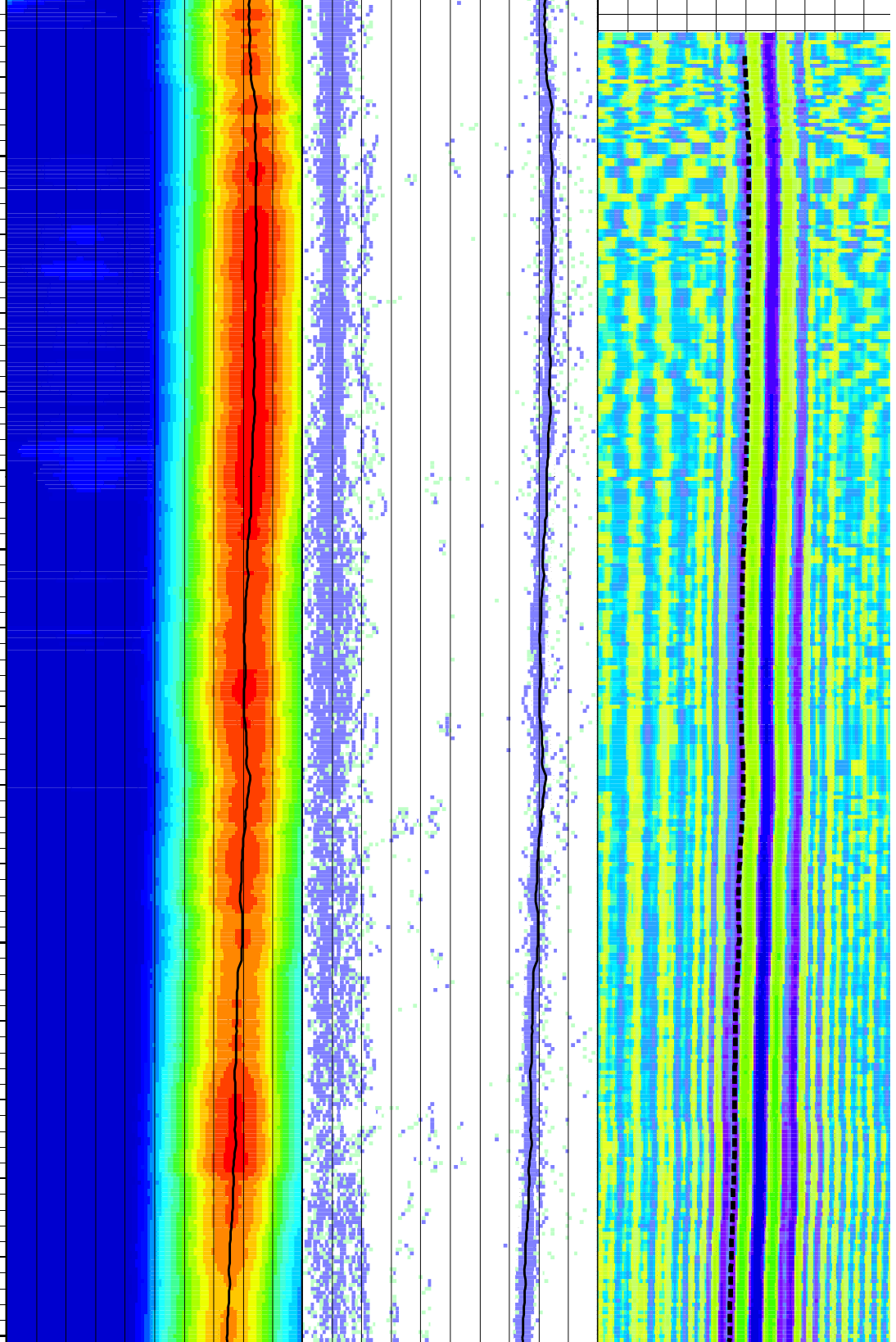
5050

(Depth = 5065.35 ft)

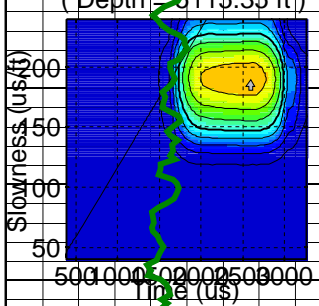


5100

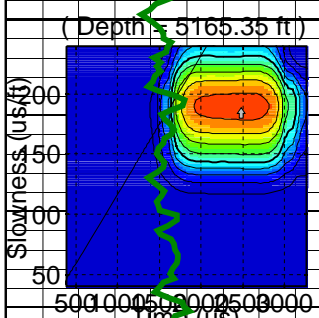
(Depth = 5115.35 ft)



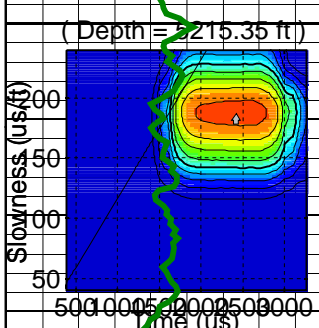
5100



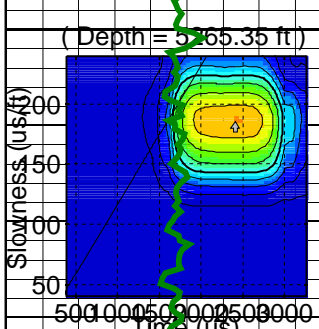
5150



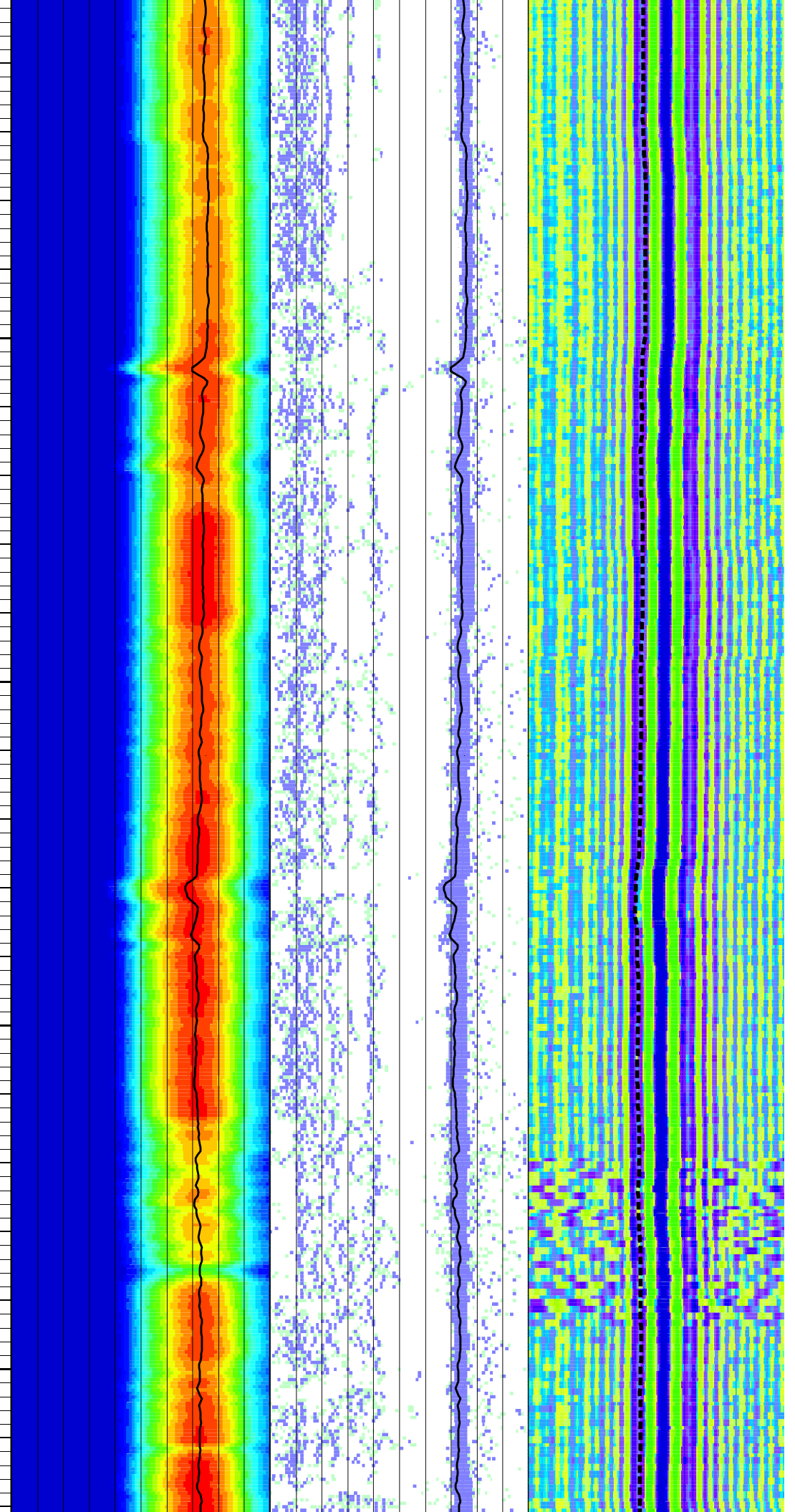
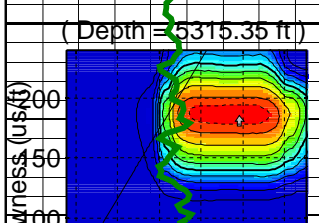
5200



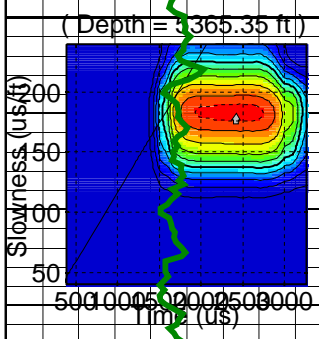
5250



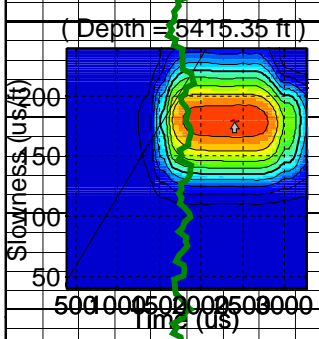
5300



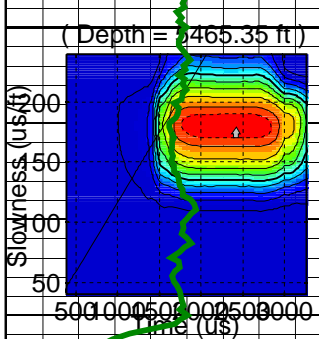
5350



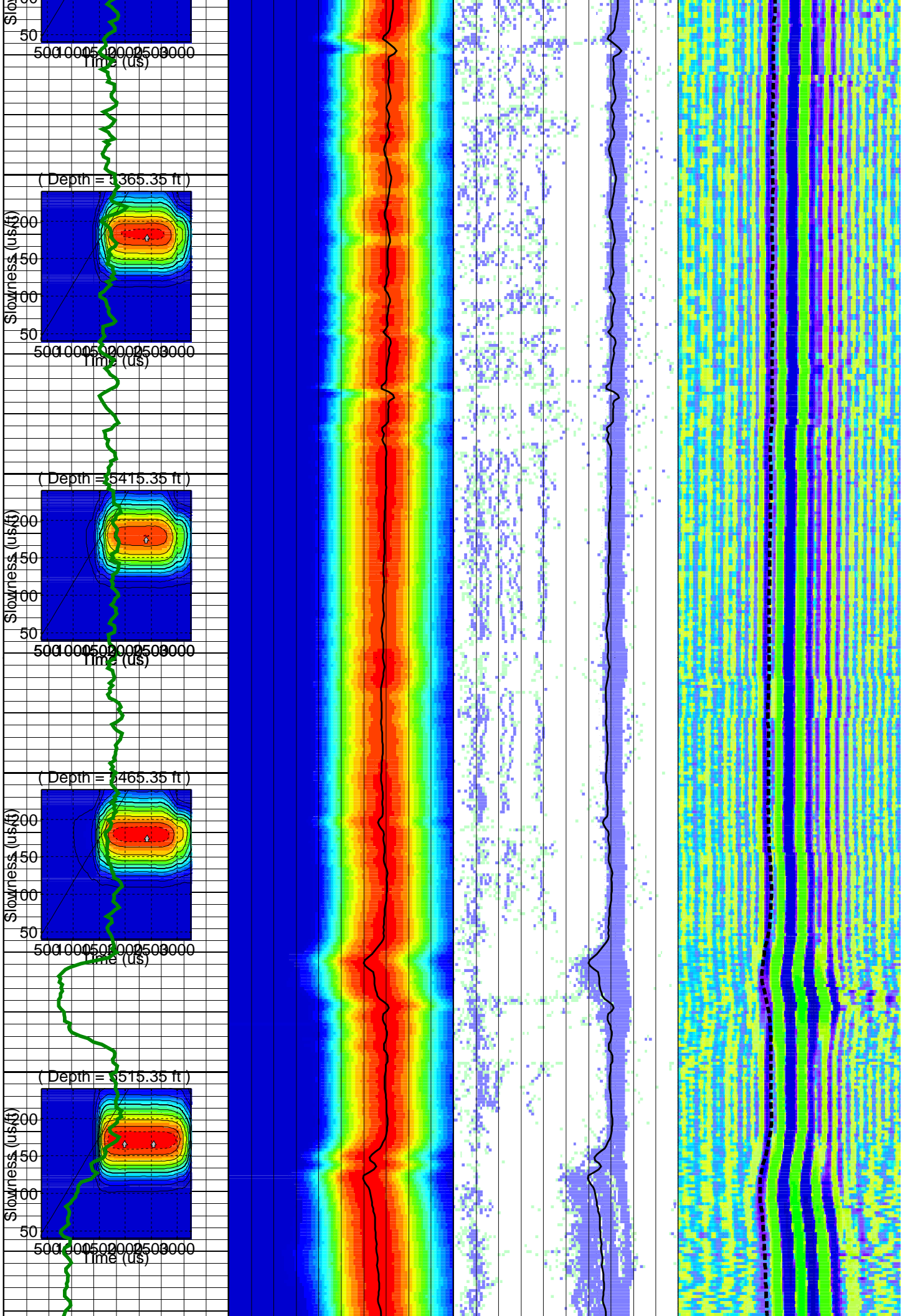
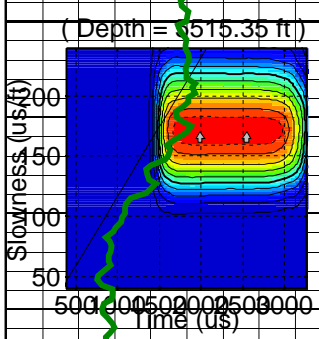
5400



5450

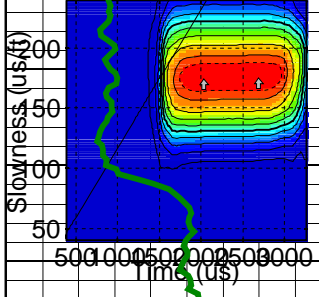


5500



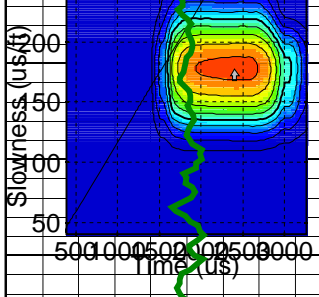
5550

(Depth = 5565.35 ft)



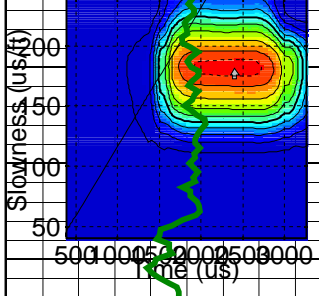
5600

(Depth = 5615.35 ft)



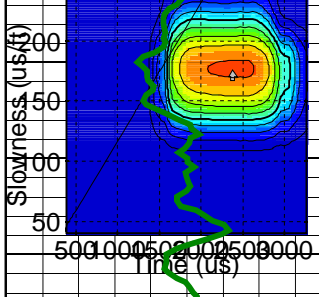
5650

(Depth = 5665.35 ft)



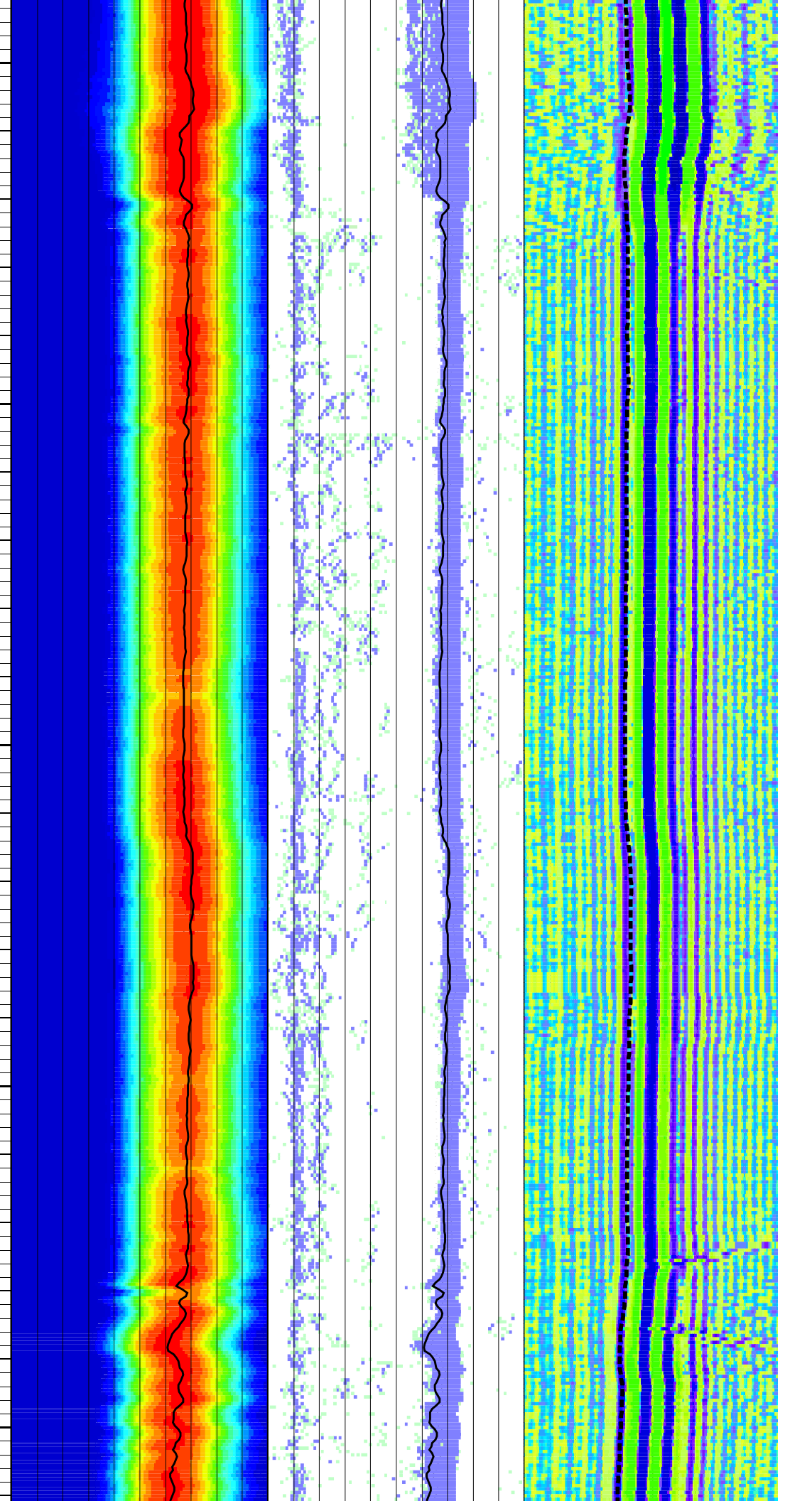
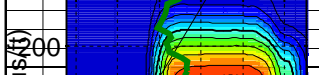
5700

(Depth = 5715.35 ft)

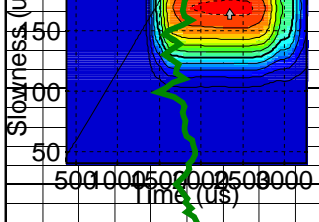


5750

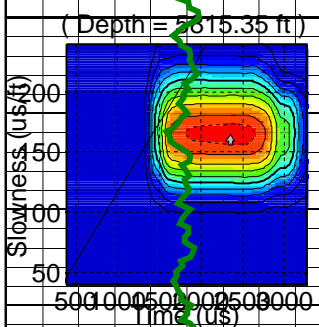
(Depth = 5765.35 ft)



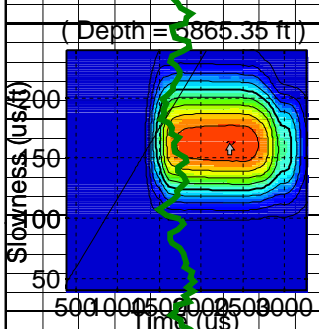
5800



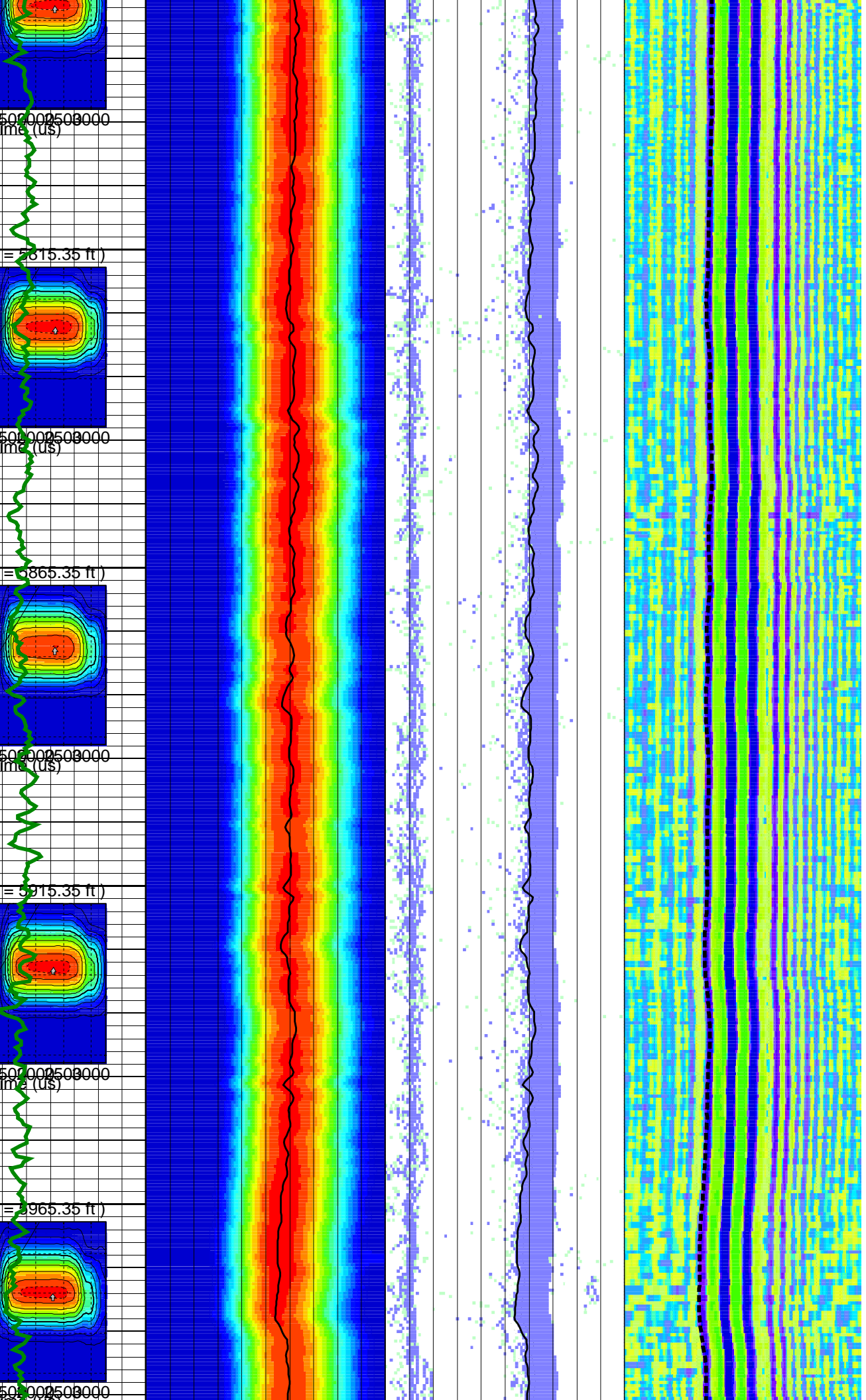
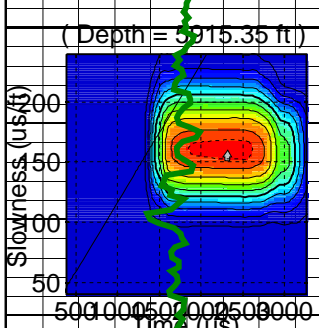
5850



5900

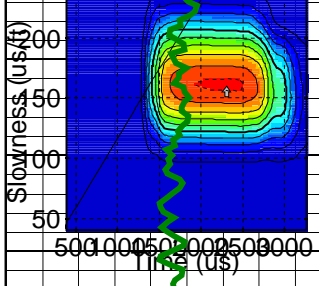


5950



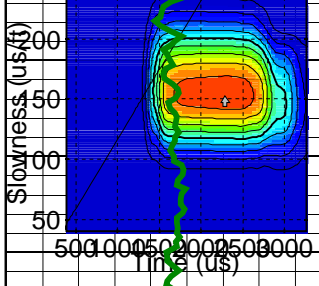
6000

(Depth = 6015.35 ft)



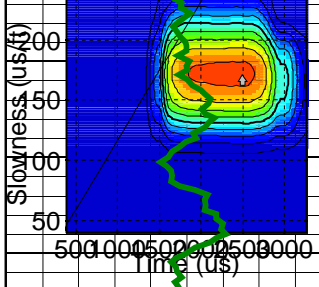
6050

(Depth = 6065.35 ft)



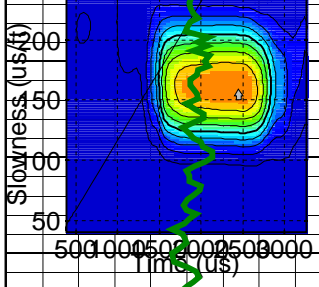
6100

(Depth = 6115.35 ft)



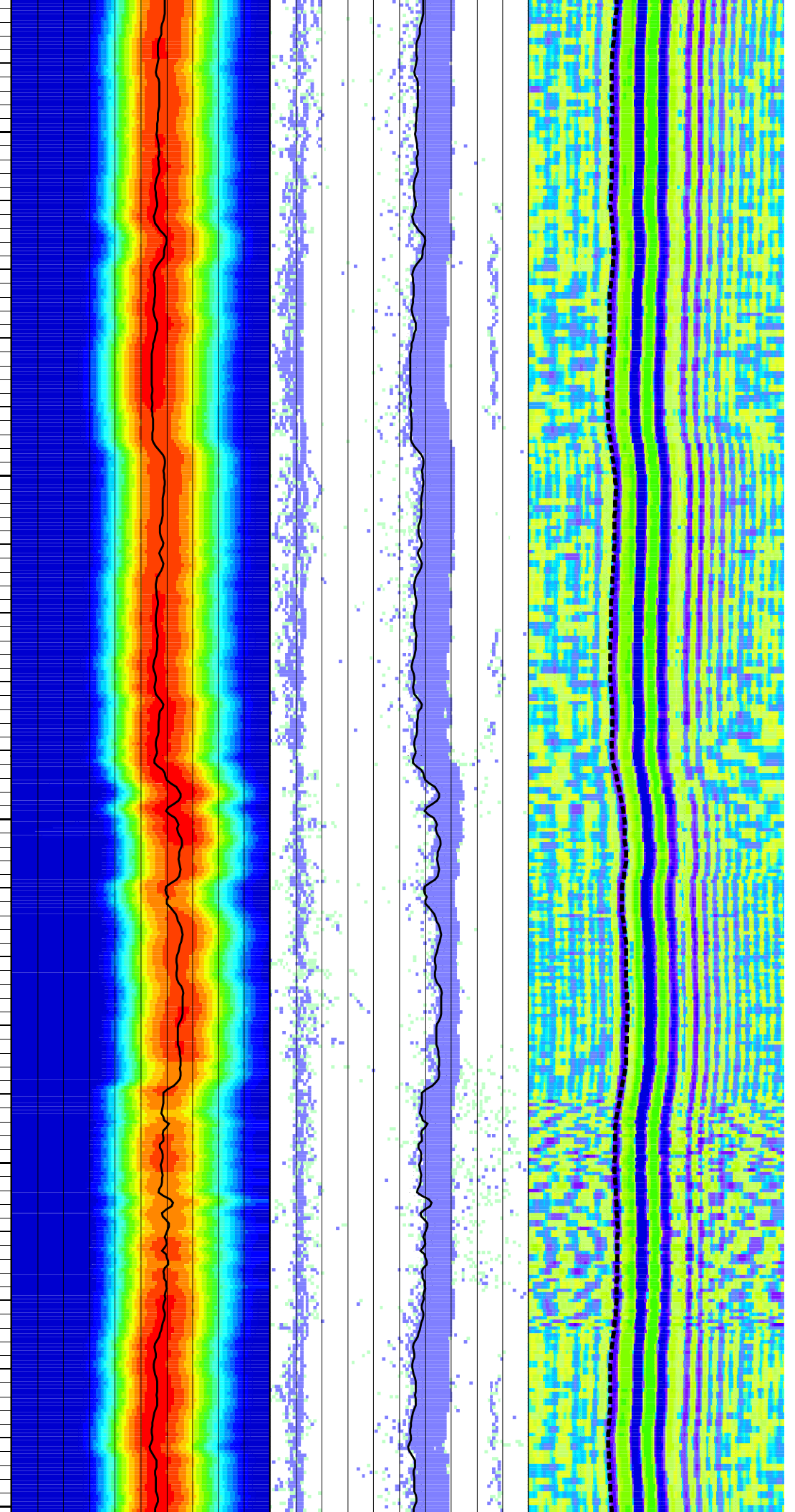
6150

(Depth = 6165.35 ft)



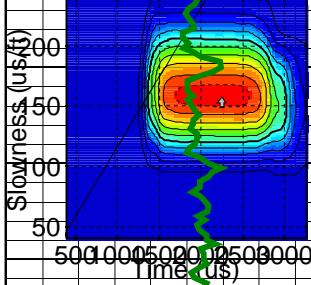
6200

(Depth = 6215.35 ft)



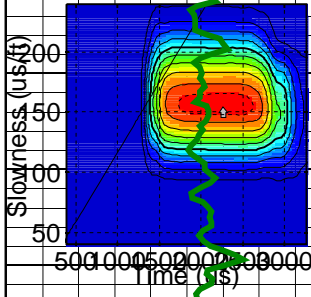
6200

(Depth = 6215.35 ft)



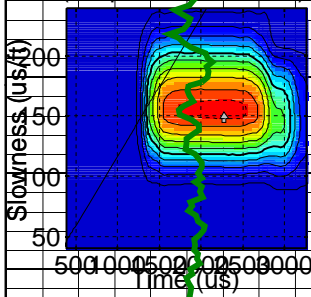
6250

(Depth = 6265.35 ft)



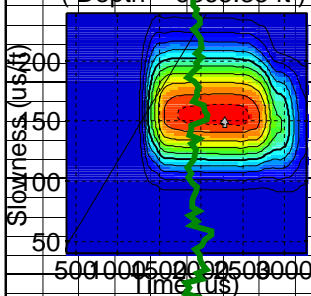
6300

(Depth = 6315.35 ft)



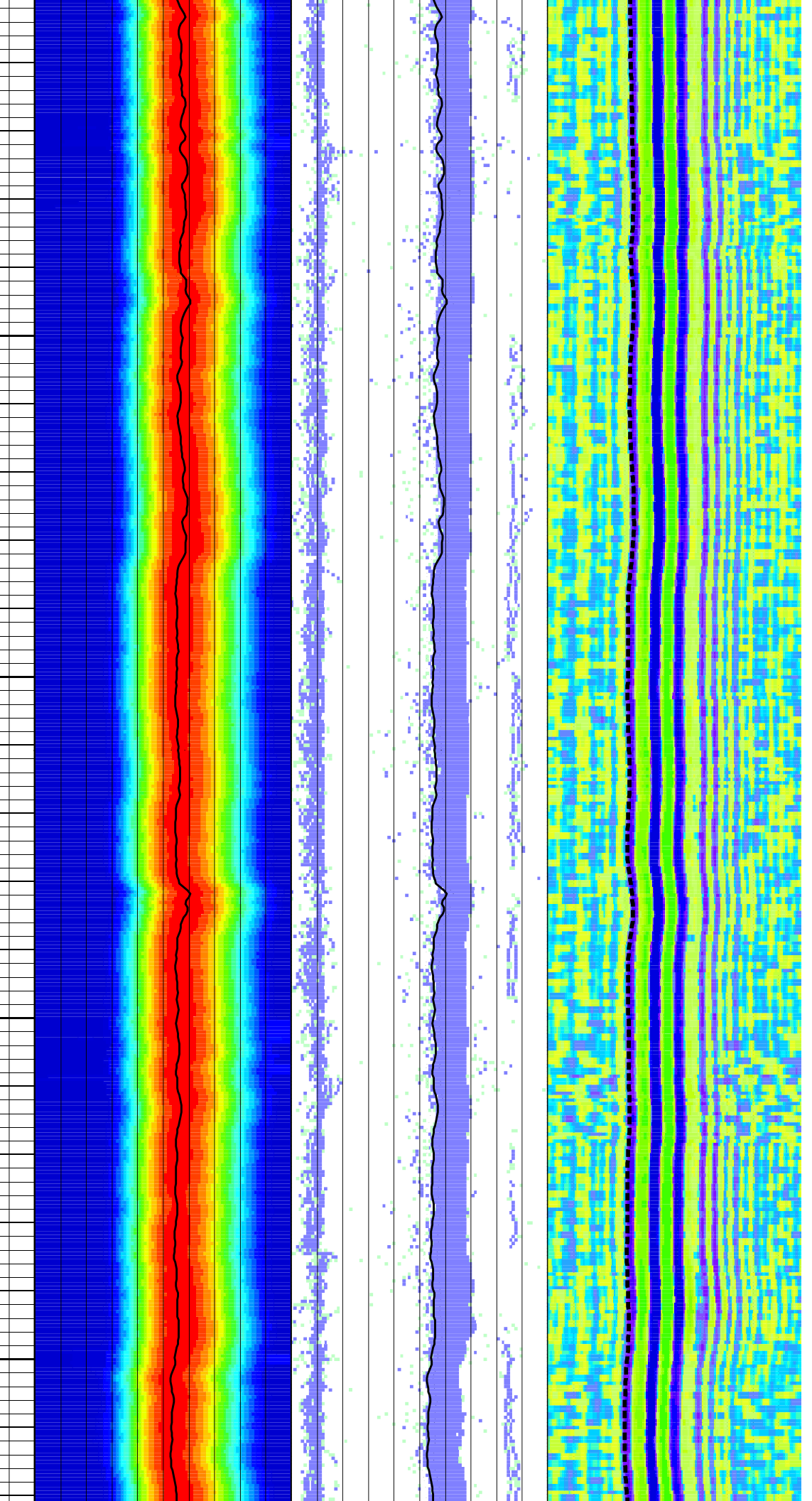
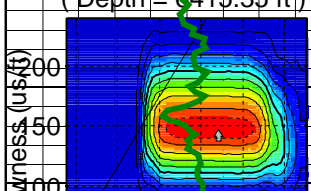
6350

(Depth = 6365.35 ft)



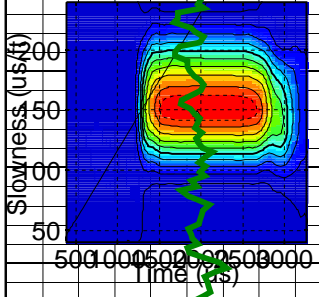
6400

(Depth = 6415.35 ft)



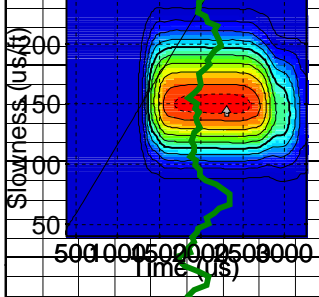
6450

(Depth = 6465.35 ft)



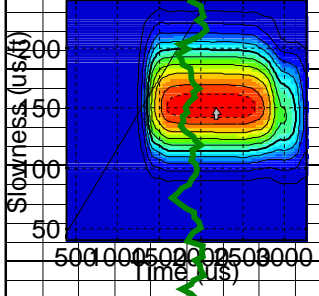
6500

(Depth = 6515.35 ft)



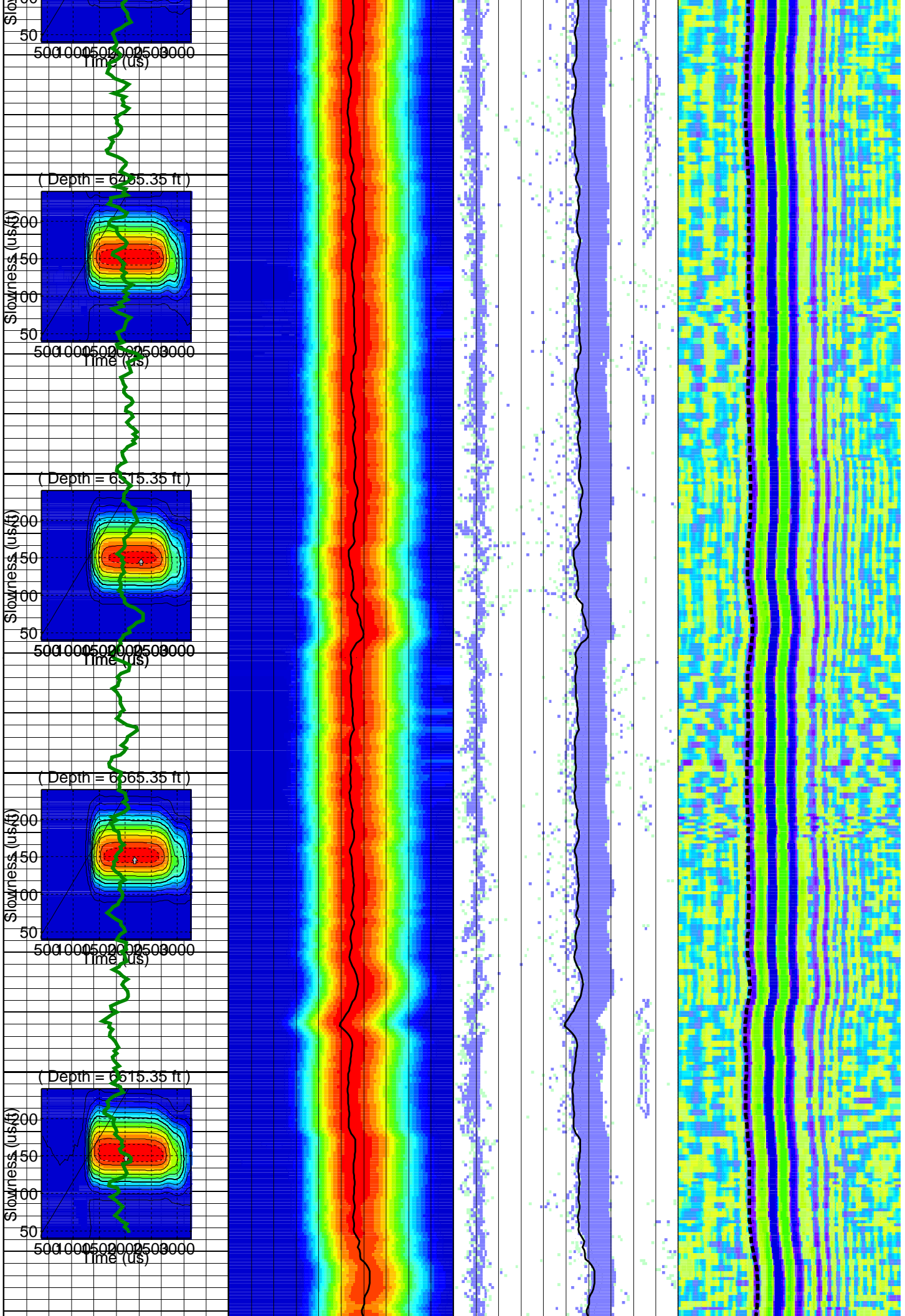
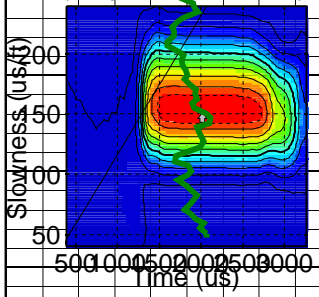
6550

(Depth = 6565.35 ft)

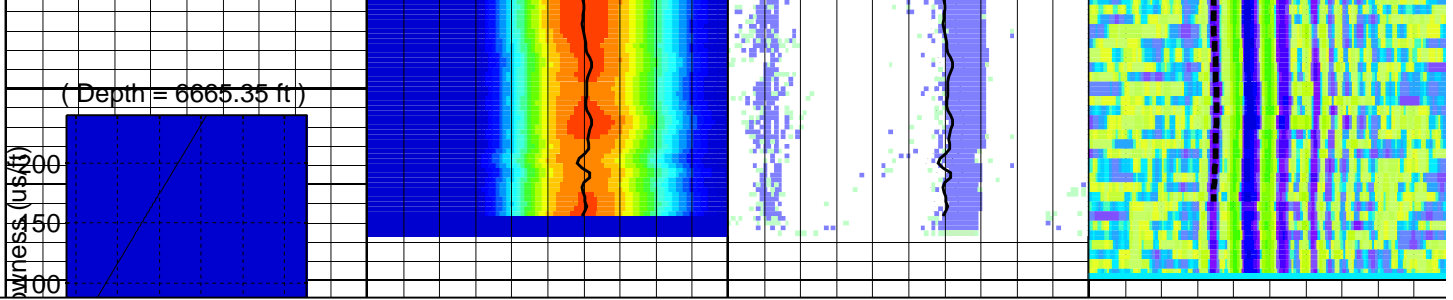


6600

(Depth = 6615.35 ft)



6650



Customized Process: Start Depth (6665.35 ft), Stop Depth (4929.85 ft), Logging Mode (MP3 – MH2)
 Noise Cut Filtering(No), Casing Cut Filtering(No)
 WF_FLG(1 1 1 1 1 1 1 1 1 1 1), MUD_TYPE(Brine), STCAL(Multishot), NRSA(7)
 TRSPAC(7), RRSPAC(0 0.333333 0.666667 1 1.33333 1.66667 2 2.33333 2.66667 3 3.33333 3.66667)
 Mud Slowness (no input)
 Hole Diameter (no input)
 Zoning Guide (no input)
 Tracking Guide (no input)
 Bulk Density (RHOB@DCS_Sonic_DLIS__05May09_124155;1 .RECORDED-MODE (4930 – 6627 ft))

--- Zone Top Depth (0), Zone Name (Zone1) ---

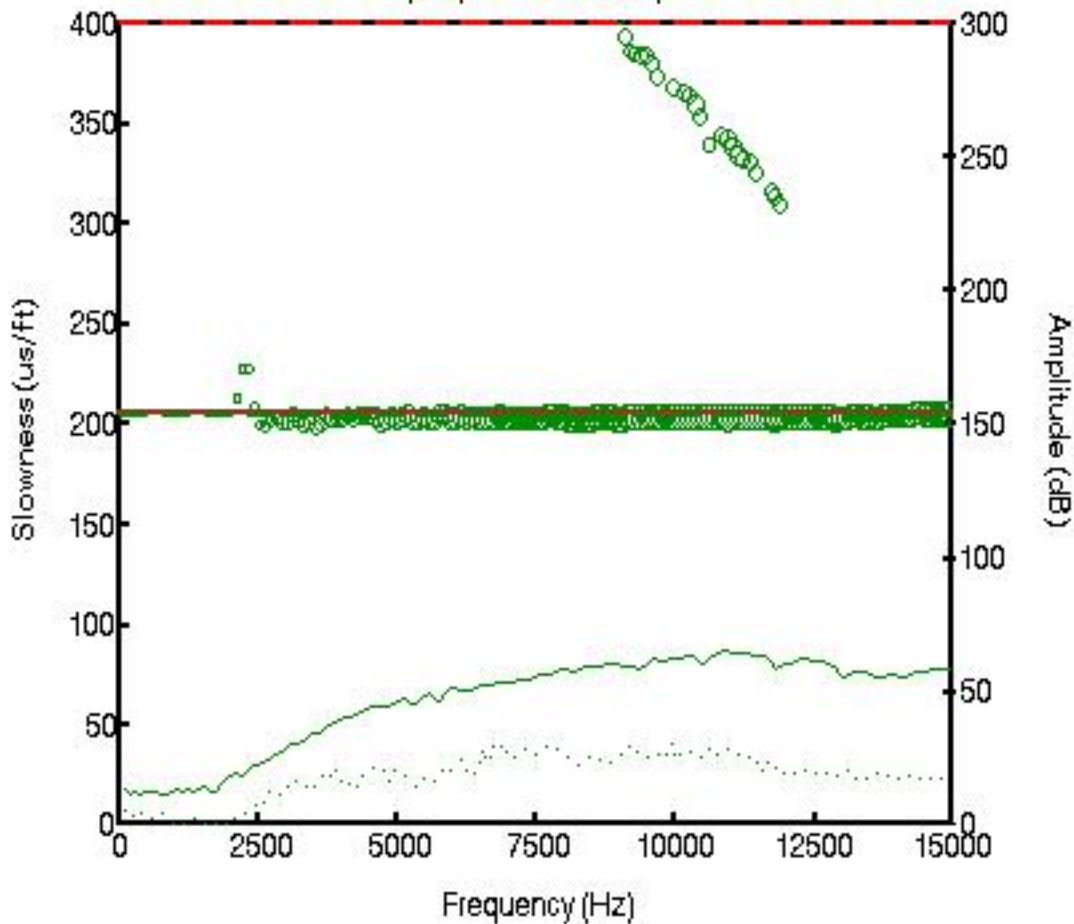
SFTY(Very Slow), BHS(OPEN), CSIZ(7), HDM(Fix*), HD(7*), DTMUD(205*), DFNM(Vp/Vs Based*), DFVPVS(4*)
 TWI(1008*), SLL(40), SUL(240), SST(2), TLL(384*), TUL(3264*), TST(48*)
 SBW(1600*), SBO(550), SWD(20), TWD(900), SEM(0.45), FLENG(29*), FLOW(500*), FHIGH(3000*)
 TKO_MODEL_ORDER(3*), TKO_TOL(50) TKO_FLOW(0), TKO_FHIGH(12000)

MD 1 : 240 ft	GRMA_FILT	DTRP	DTRP	
	0 (gAPI) 150	40 (us/ft) 240	40 (us/ft) 240	
	STPLR4@BestDT-3;1	STPrjR	SfaR	
	384 (us) 3264	40 (us/ft) 240	40 (us/ft) 240	

TICO	
500 (us) 3000	
WF VDL	
500 (us) 3000	

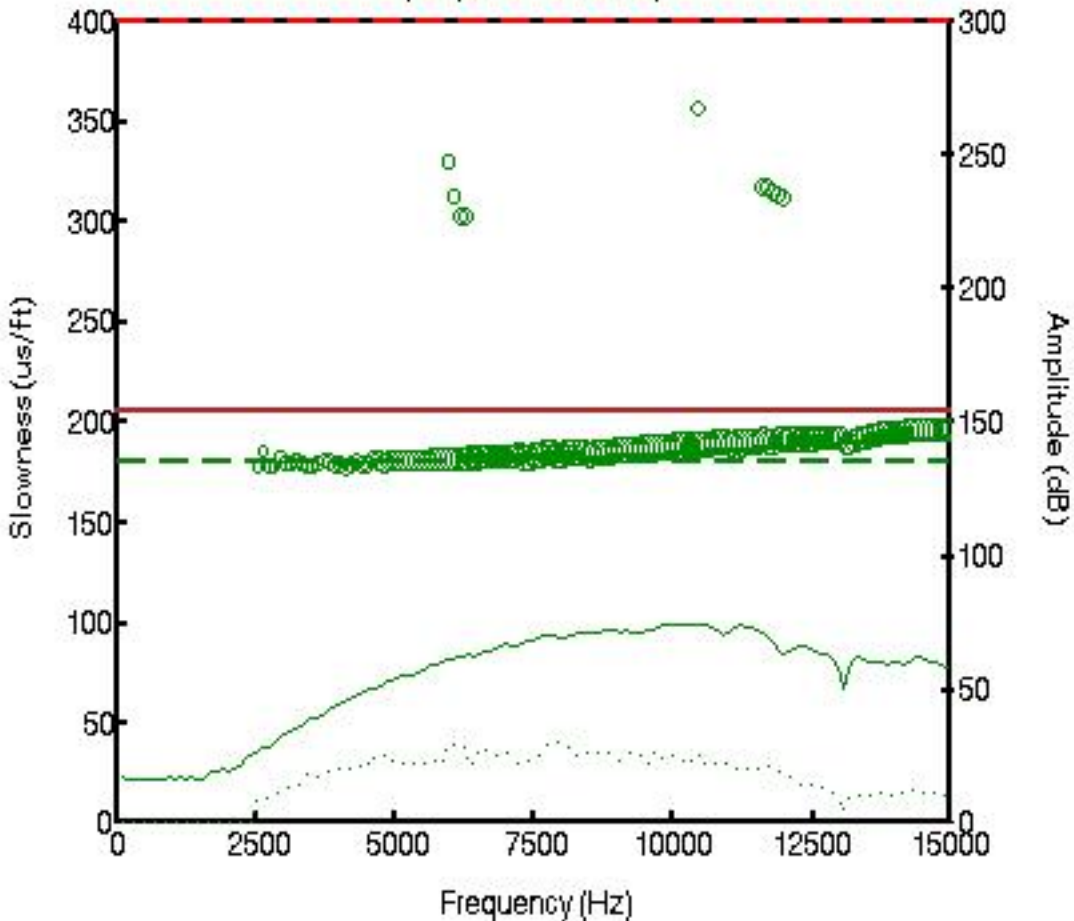
Slowness Dispersion Plot

(Depth = 5000.02 ft)



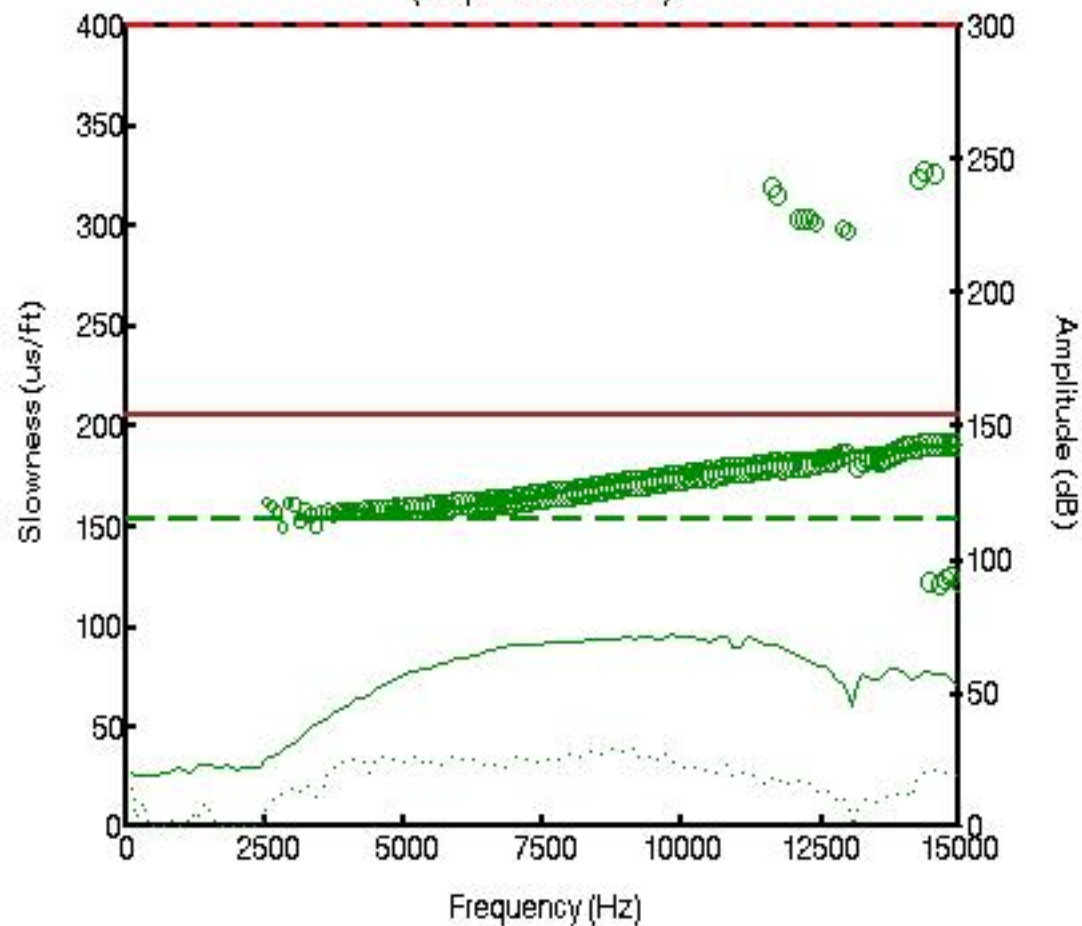
Slowness Dispersion Plot

(Depth = 5500.02 ft)



Slowness Dispersion Plot

(Depth= 6000.02 ft)



Slowness Dispersion Plot

(Depth = 6500.02 ft)

