

**Company:** Chevron U.S.A., Inc.  
**Well Name:** JIP II AC 21B  
**Field:** Alaminos Canyon Block 21  
**County:** State: Louisiana  
**Country:** U.S.A.

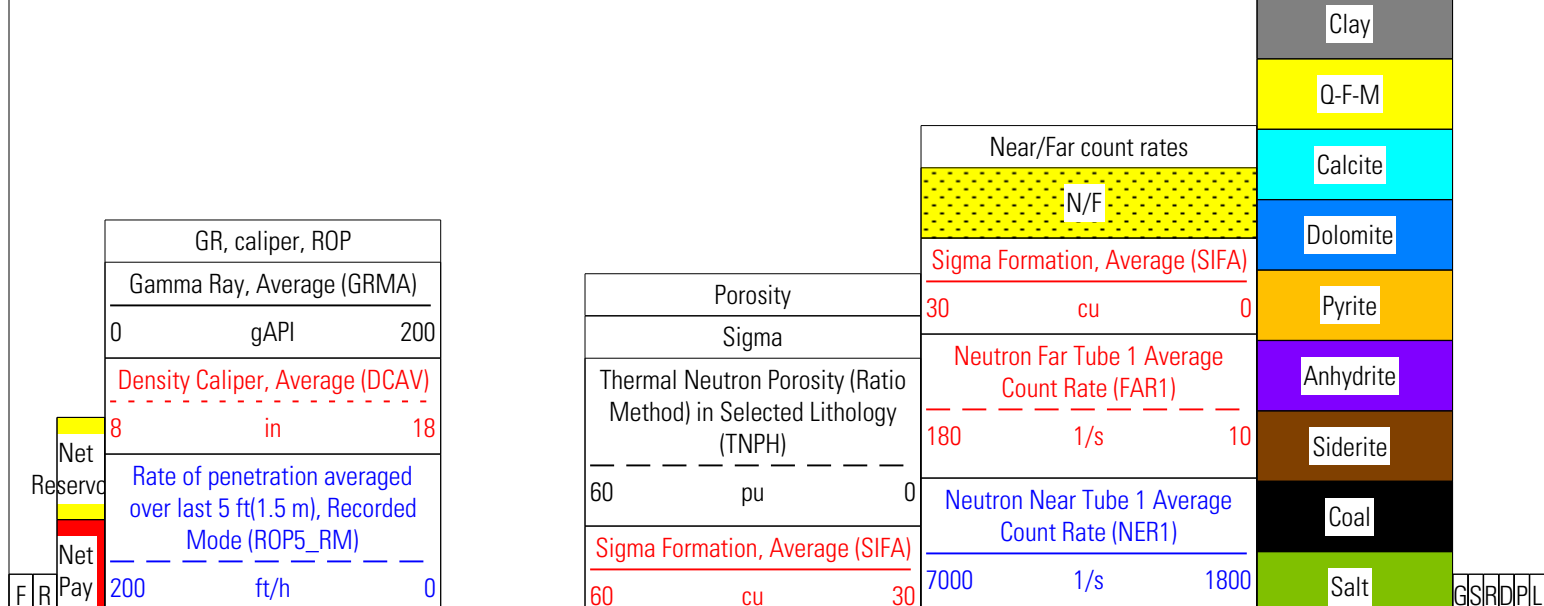
## SLB EcoView. SIGMA Plot.

<b>Location Description:</b>		API Well Number: 608054007100		
NAD27 15N, ft		Latitude	26° 56' 39.19" N	
X = 1023773.00 ft		Longitude	94° 53' 35.59" W	
Y = 9781797.00 ft				
<b>Elevations:</b>	Permanent Datum Elev:	0.0 ft	Kelly Bushing:	0.0 ft
	Permanent Datum:	Mean Sea Level	Drilling Floor:	51.0 ft
	Depth Reference:	Driller'sDepth	Ground/Sea Floor:	-4883.0 ft
	Log Measured From:	Drill Floor	Height Above Datum:	51.0 ft
Processing Date:	May 07 15:25	Bit Size:	8.500 in	
Acquisition Date:	May 5,2009	from:	4934.0 ft	to: 6050.0 ft
Spud Date:		Casing Size:	in	Weight: lbm/ft
Total Depth:	6050.0 ft	from:	ft	to: ft
Top Processed Interval:	5030.0 ft	Casing Bottom Schlumberger:	ft	
Bottom Processed Interval:	5970.0 ft	Type Fluid in Hole:	Sea Water	
Total Depth TVD:	ft	Dens:	8.53 lbm/gal	Vis: s
Maximum Well Inclination:	deg	pH:	Fluid Loss: in3	
Maximum Well Temperature:	46 degF	Sample Source:		
Acquisition Software:	Maxwell 1.1	Rm:	0.230 Ohm.m @	57 degF
Data File Name:	JIP_II_AC_21B_Arenite_Ecovi	Rmf:	0.150 Ohm.m @	57 degF
Recorded By:	M. Brenson	Rmc:	Ohm.m @	degF
Processed By:	A. Peternell	Borehole Salinity:	37.527 ppk	

All interpretations using EcoView, and all recommendations or reservoir descriptions based upon such interpretations, are opinions based on inferences from measurements and empirical relationships and on assumptions, which inferences and assumptions are not infallible, and with respect to which competent specialists may differ. In addition, such interpretations, recommendations and reservoir descriptions may involve the opinion and judgement of Customer. Customer has full responsibility for all interpretations, recommendations and reservoir descriptions utilizing EcoView.

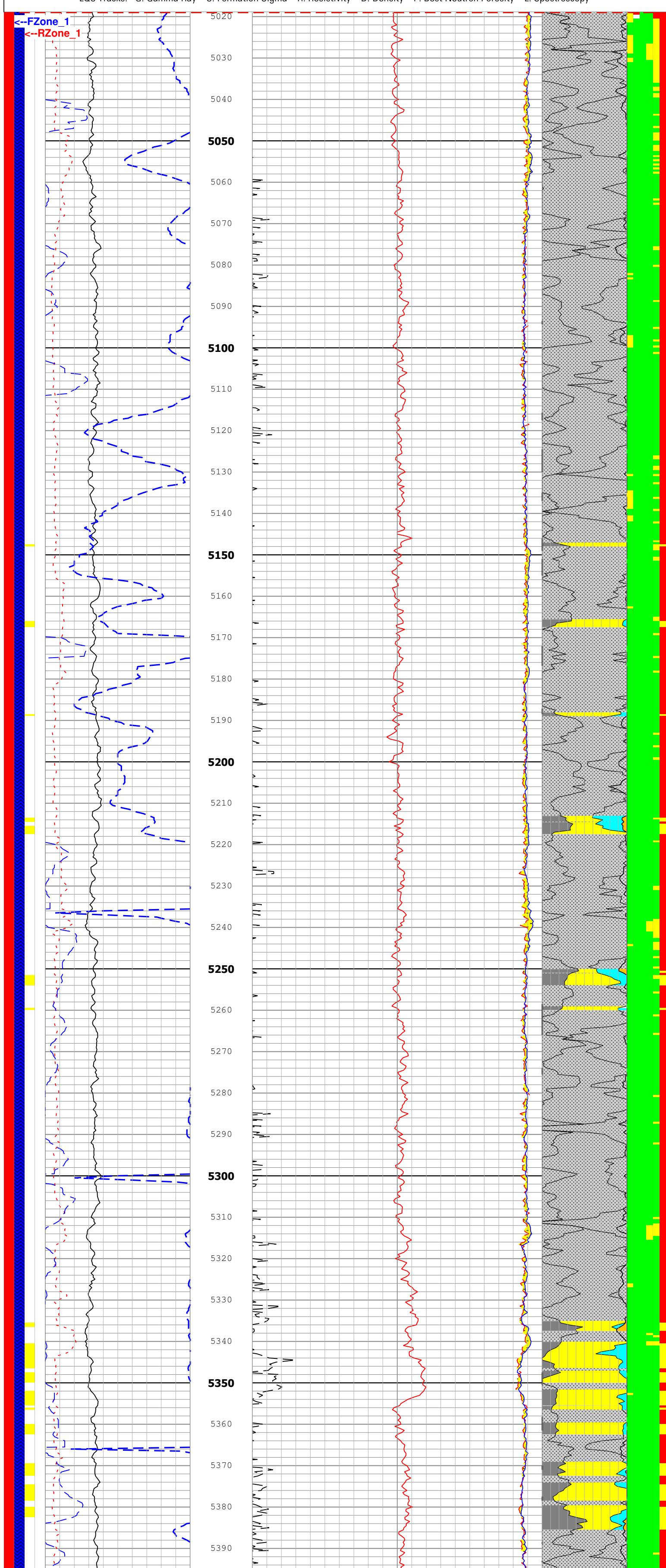
Schlumberger does not warrant the accuracy, correctness or completeness of any interpretation, recommendation or reservoir description.

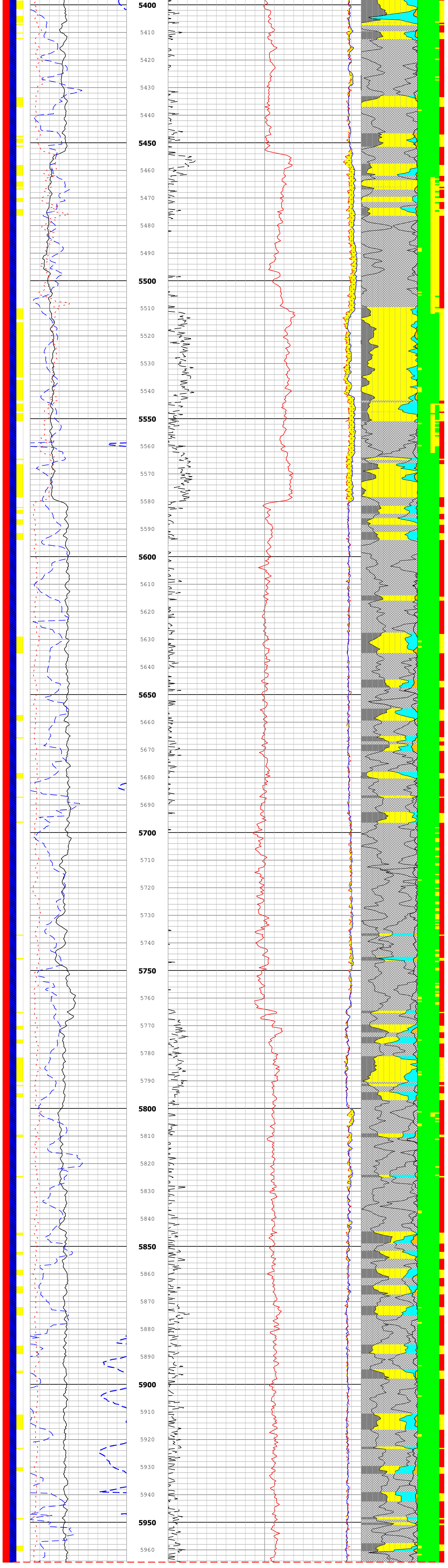
Description: EcoView EcoScope Log data Format: EcoView\_EcoScopeLogData.xml Index Scale: 1:240 Index Unit: ft Index Type: Measured Depth  
 Creation Date: 22-May-2009 11:17:08



\*\*\* Quality Flag Descriptions for EcoView Computations \*\*\*

White = Absent; Green = Reliable; Yellow = Warning; Gray/Red = Data outside of EcoView tolerance specifications.  
 LQC Tracks: G: Gamma Ray S: Formation Sigma R: Resistivity D: Density P: Best Neutron Porosity L: Spectroscopy





Company: **Chevron U.S.A., Inc.** **Schlumberger**  
 Well: **JIP II AC 21B**  
 Field: **Alaminos Canyon Block 21**  
 County:  
 State: **Louisiana**

**JIP\_II\_AC\_21B\_Arenite\_Ecoview2.dlis**  
**Schlumberger EcoView**