



**GEOFRAME
PROCESSED
INTERPRETATION**

SonicVISION Well B

BestDT Leaky-P DT

*A Mark of Schlumberger

Using the following logs: **SonicVISION**

COMPANY: Chevron U.S.A., Inc.
WELL: JIP II AC 21 B
FIELD: Alaminos Canyon
County: Louisiana
State: Louisiana
COUNTRY: U.S.A.
Date Logged: 04-May-2009 **Date Processed:** 7-May-2009
Well Location: NAD27 15N, ft
 X = 1023773.00 ft
Elevations: **KB:** **DF:** 51ft **GL:** -4883ft
API Number: 608054007100 **Job Number:**

FOLD HERE The well name, location and borehole reference data were furnished by the customer.

All interpretations are opinions based on inferences from electrical or other measurements and we cannot, and do not guarantee the accuracy or correctness of any interpretation, and we shall not, except in the case of gross or willful negligence on our part, be liable or responsible for any loss, costs, damages or expenses incurred or sustained by anyone resulting from any interpretations made by any of our officers, agents or employees. These interpretations are also subject to Clause 4 of our General Terms and Conditions as set out in our current Price Schedule.

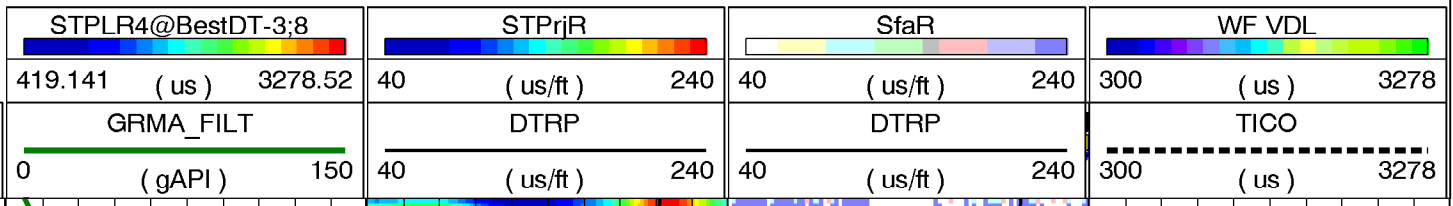
Field Recording:	Location: Mud Module	Software Version: 20C0-999	Engineer: N. Goura
Office Recording:	ICS Center: Lafayette	Baseline:	Log Analyst: Bill Lawton

Mud and Borehole Measurements:

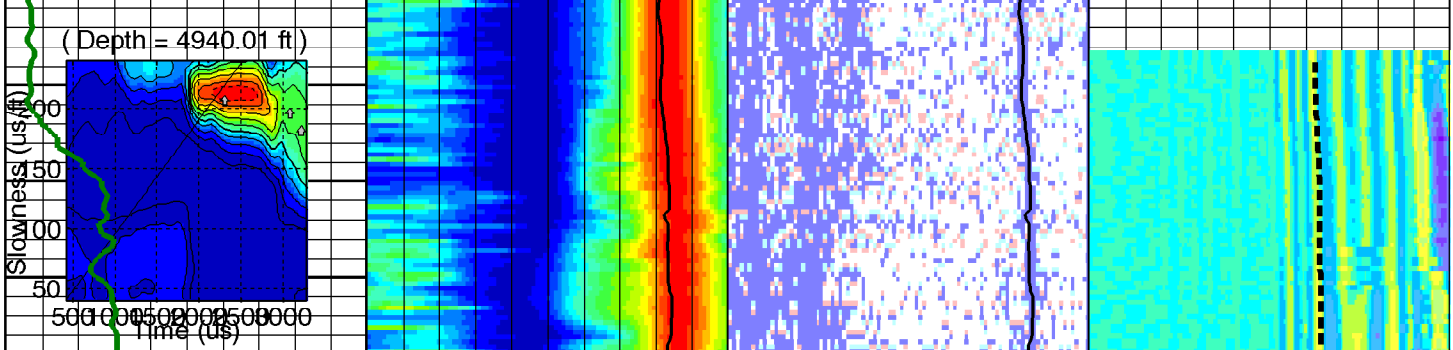
Rm @ Measured Temperature: 0.23ohm.m @ 57degF	BHT: 46degF	Bitsize: 8.5in
Rmf @ Measured Temperature: 0.23ohm.m @ 57degF	Type Fluid in Hole:	WBM
Rmc @ Measured Temperature: 0.23ohm.m @ 57degF	Mud Density: 10.5lbm/gal	

Remarks:

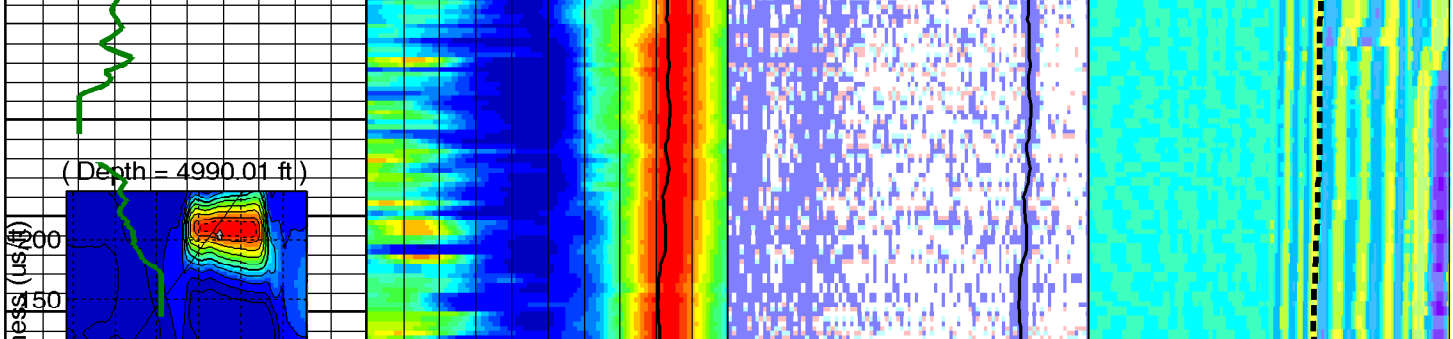
MD
1 : 240
ft



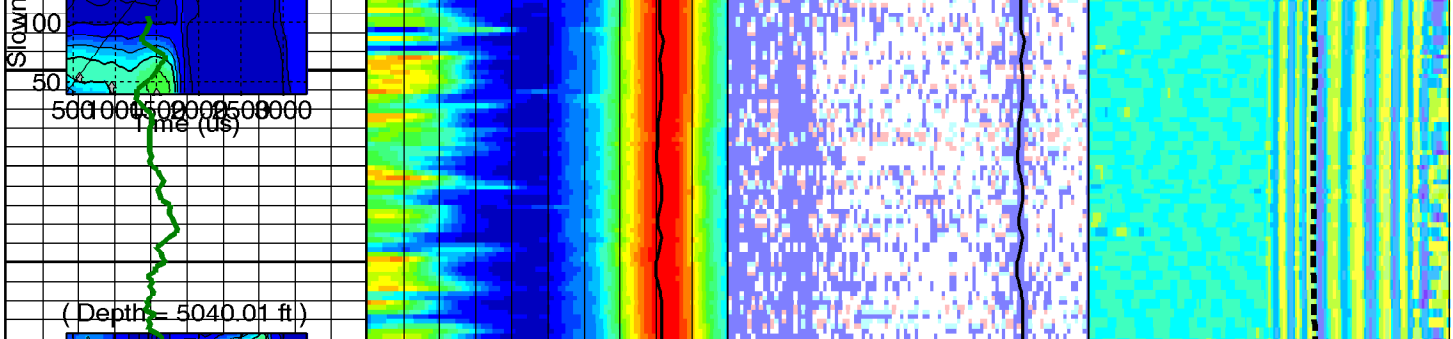
4950



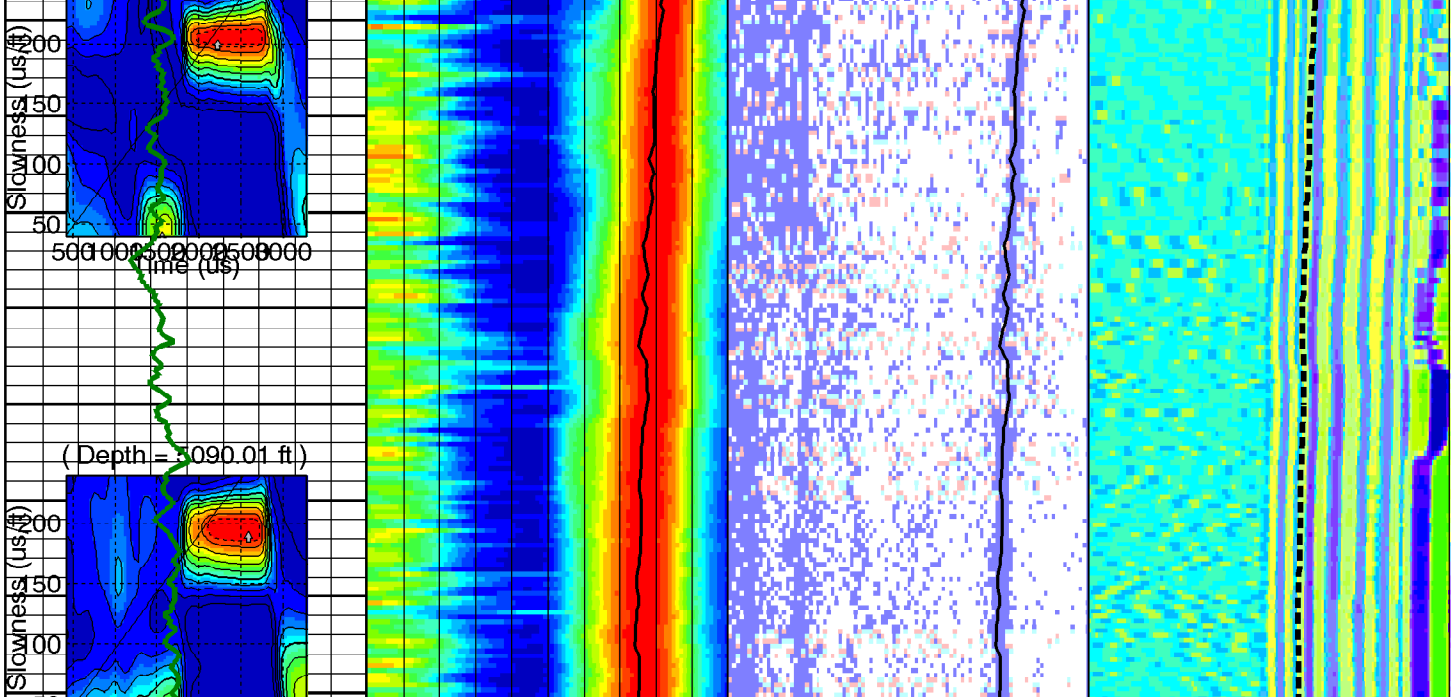
5000



5050



5100



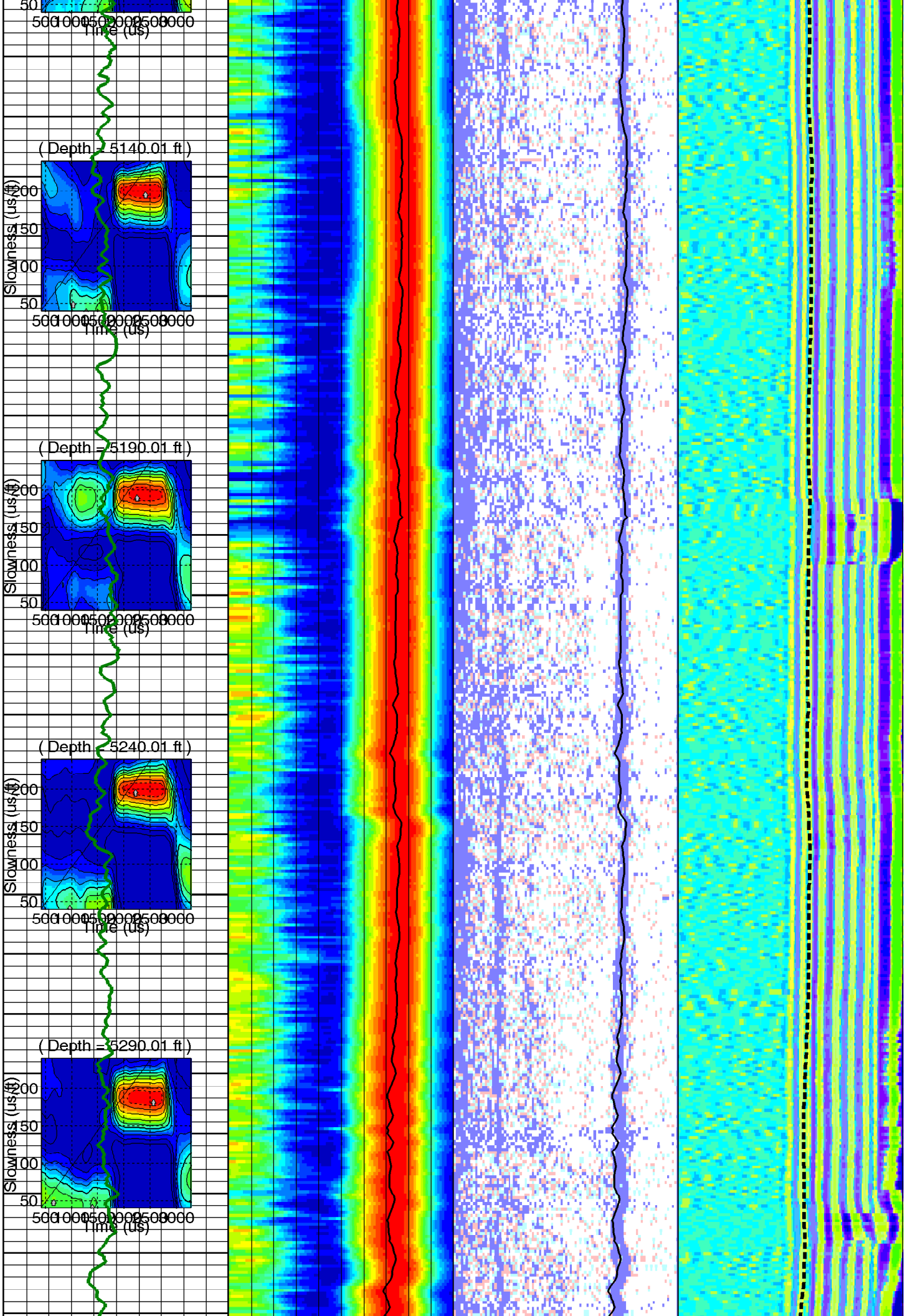
5100

5150

5200

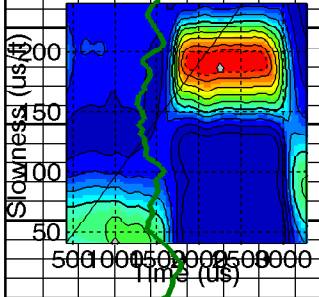
5250

5300



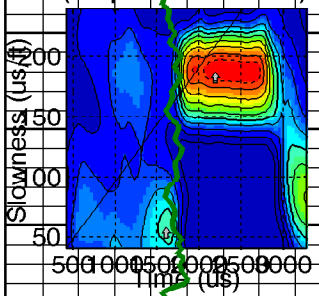
5350

(Depth = 5340.01 ft)



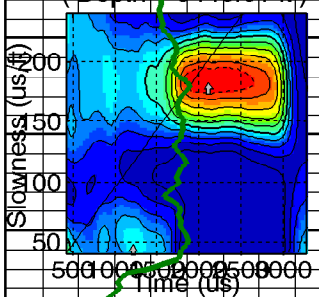
5400

(Depth = 5390.01 ft)



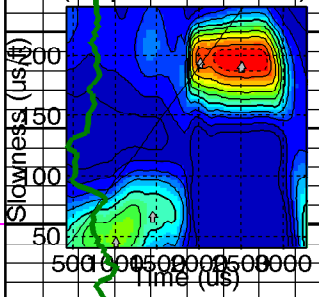
5450

(Depth = 5440.01 ft)

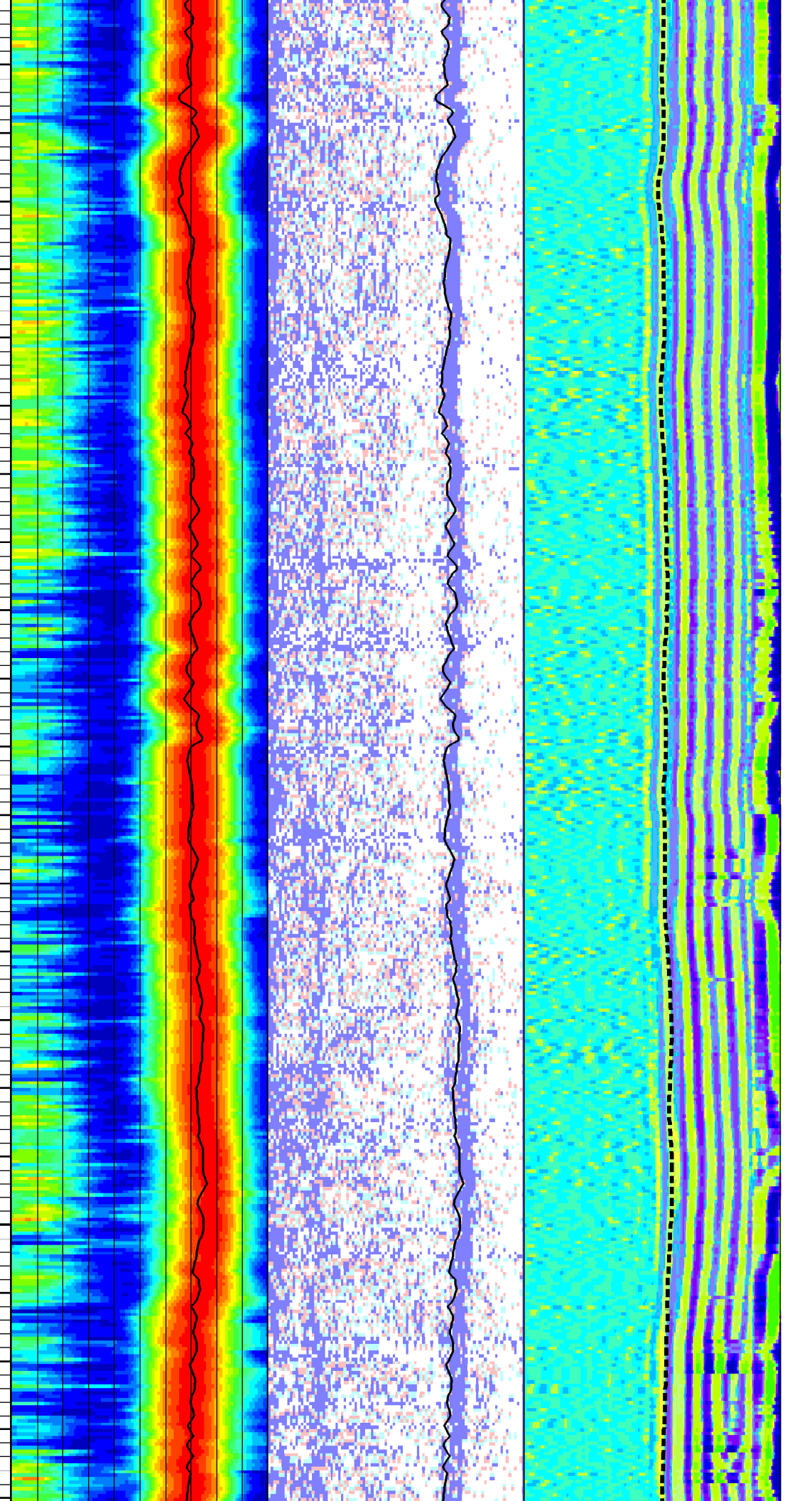
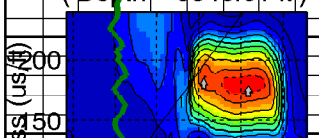


Very Slow
5500
Very Slow

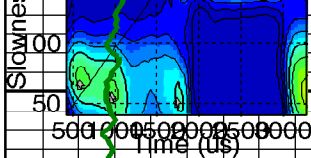
(Depth = 5490.01 ft)



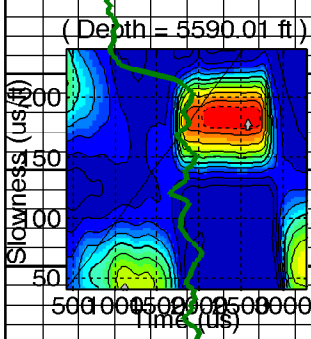
(Depth = 5540.01 ft)



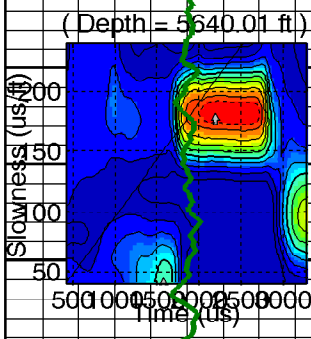
5550



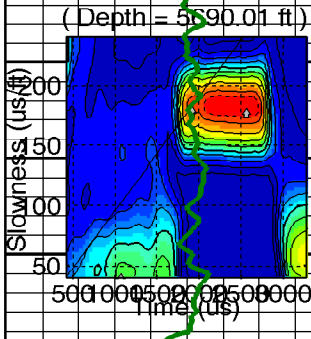
5600



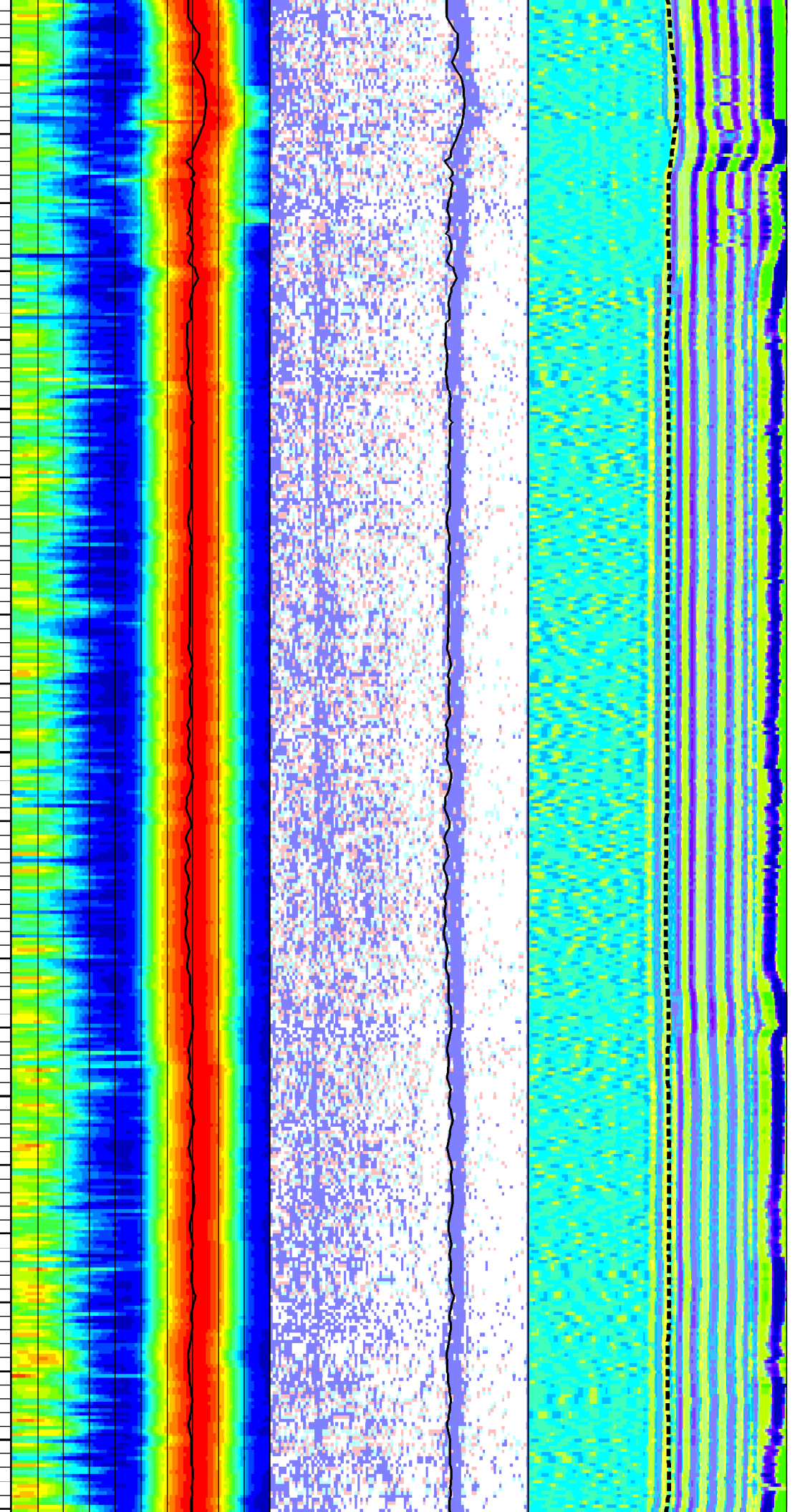
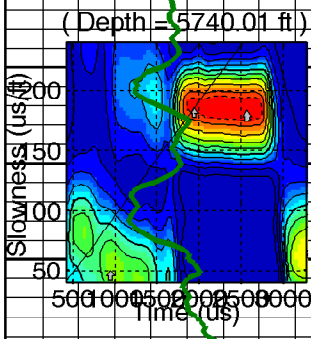
5650



5700

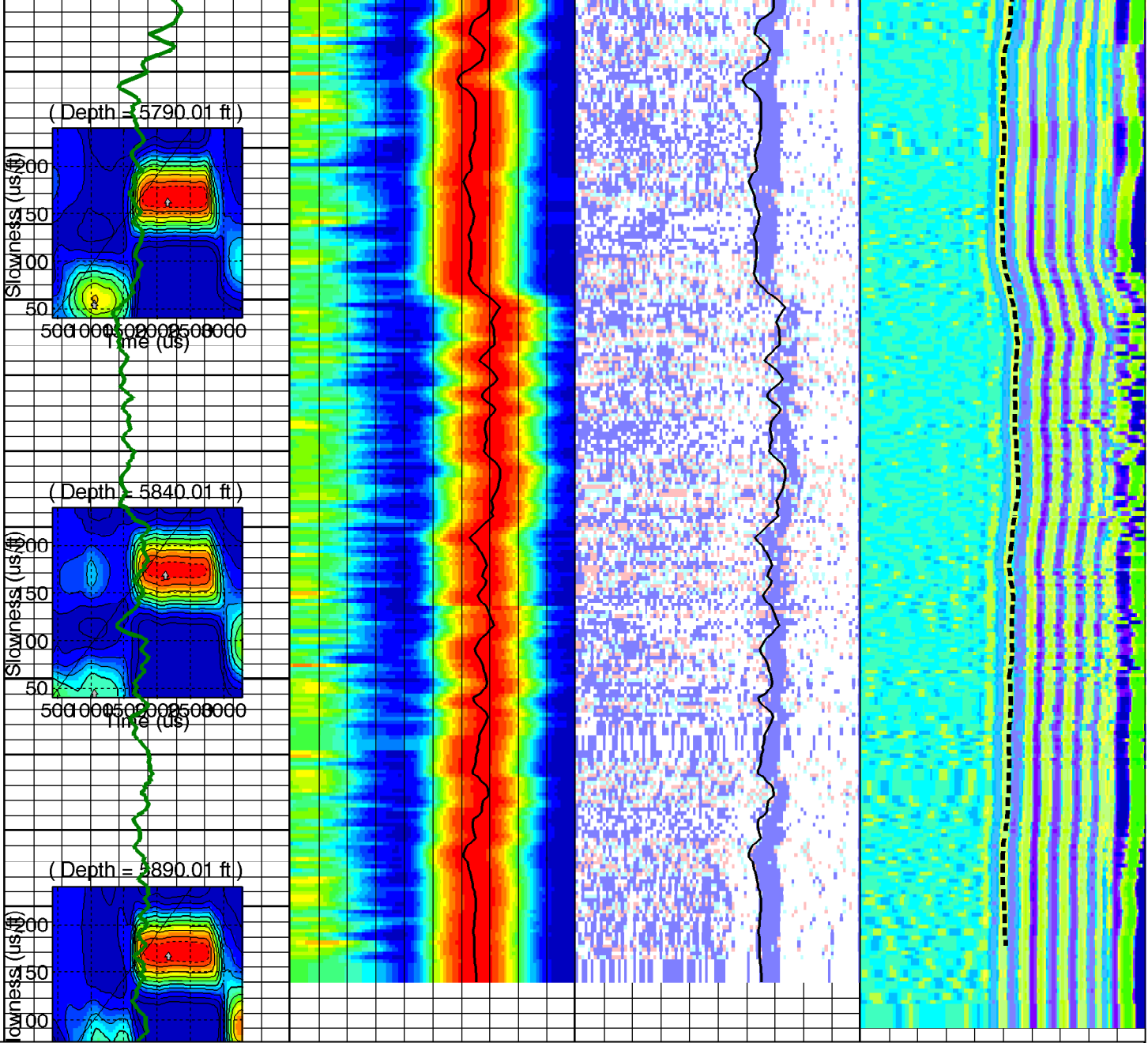


5750



5800

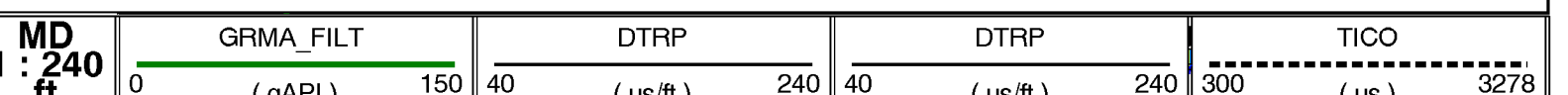
5850



Customized Process: Start Depth (5890.01 ft), Stop Depth (4920.51 ft), Logging Mode (ISONIC - MPS_VSLP)
 Noise Cut Filtering(No), Casing Cut Filtering(No)
 WF_FLG(1 1 1 1), MUD_TYPE(WBM), DTMUD(205), STCAL(Full Array)
 TRSPAC(9.85), RRSAC(0 0.666667 1.33333 2)
 Hole Diameter (no input)
 Zoning Guide (no input)
 Tracking Guide (no input)

--- Zone Top Depth (0), Zone Name (Zone1) ---
 SFTY(Very Slow), BHS(OPEN), CSIZ(7), HDM(Fix*), HD(8.5), DFNM(Vp/Vs Based*), DFVPVS(5*)
 TWI(595.703*), SLL(40.4227), SUL(240.409), SST(2.12751), TLL(419.141), TUL(3278.52), TST(39.7135)
 SBW(1600*), SBO(550), SWD(20), TWD(900), SEM(0.45), FLENG(49*), FLOW(2500*), FHIGH(4000*)
 TKO_MODEL_ORDER(2), TKO_TOL(50) TKO_FLOW(0), TKO_FHIGH(12000)

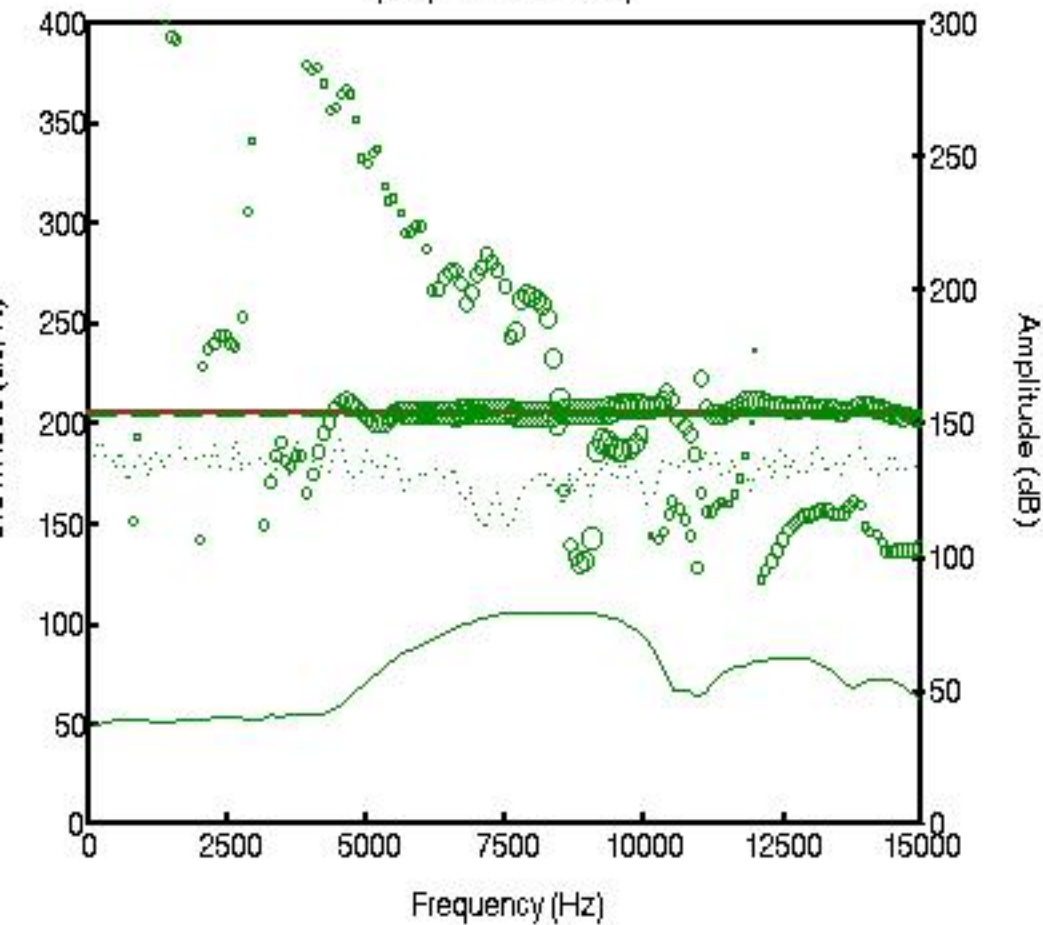
--- Zone Top Depth (5500), Zone Name (1) ---
 SFTY(Very Slow), BHS(OPEN), CSIZ(7), HDM(Fix*), HD(8.5), DFNM(Vp/Vs Based*), DFVPVS(4*)
 TWI(595.703*), SLL(40.4227), SUL(240.409), SST(2.12751), TLL(419.141), TUL(3278.52), TST(39.7135)
 SBW(1600*), SBO(550), SWD(20), TWD(900), SEM(0.45), FLENG(49*), FLOW(2500*), FHIGH(4000*)
 TKO_MODEL_ORDER(2), TKO_TOL(50) TKO_FLOW(0), TKO_FHIGH(12000)



	(us)		(us/ft)		(us/ft)		(us)				
	STPLR4@BestDT-3;8		STPrjR		SfaR		WF VDL				
419.141	(us)	3278.52	40	(us/ft)	240	40	(us/ft)	240	300	(us)	3278

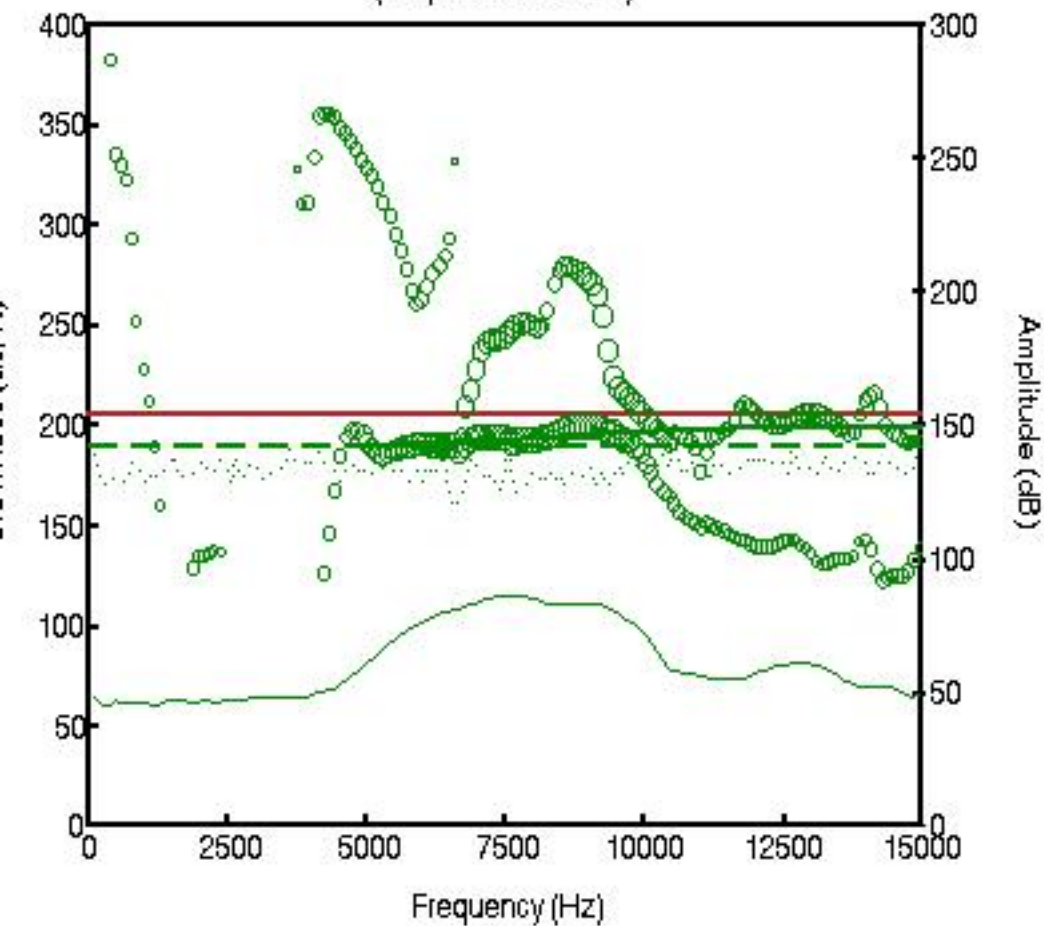
Slowness Dispersion Plot

(Depth = 5000.01 ft)



Slowness Dispersion Plot

(Depth= 5200.01 ft)



Slowness Dispersion Plot

(Depth = 5800.01 ft)

