



GEOFRAME
PROCESSED
INTERPRETATION

SonicVISION
BestDT Leaky-P DT

Well I 6822-8860

* A Mark of Schlumberger

Using the following logs: SonicVISION

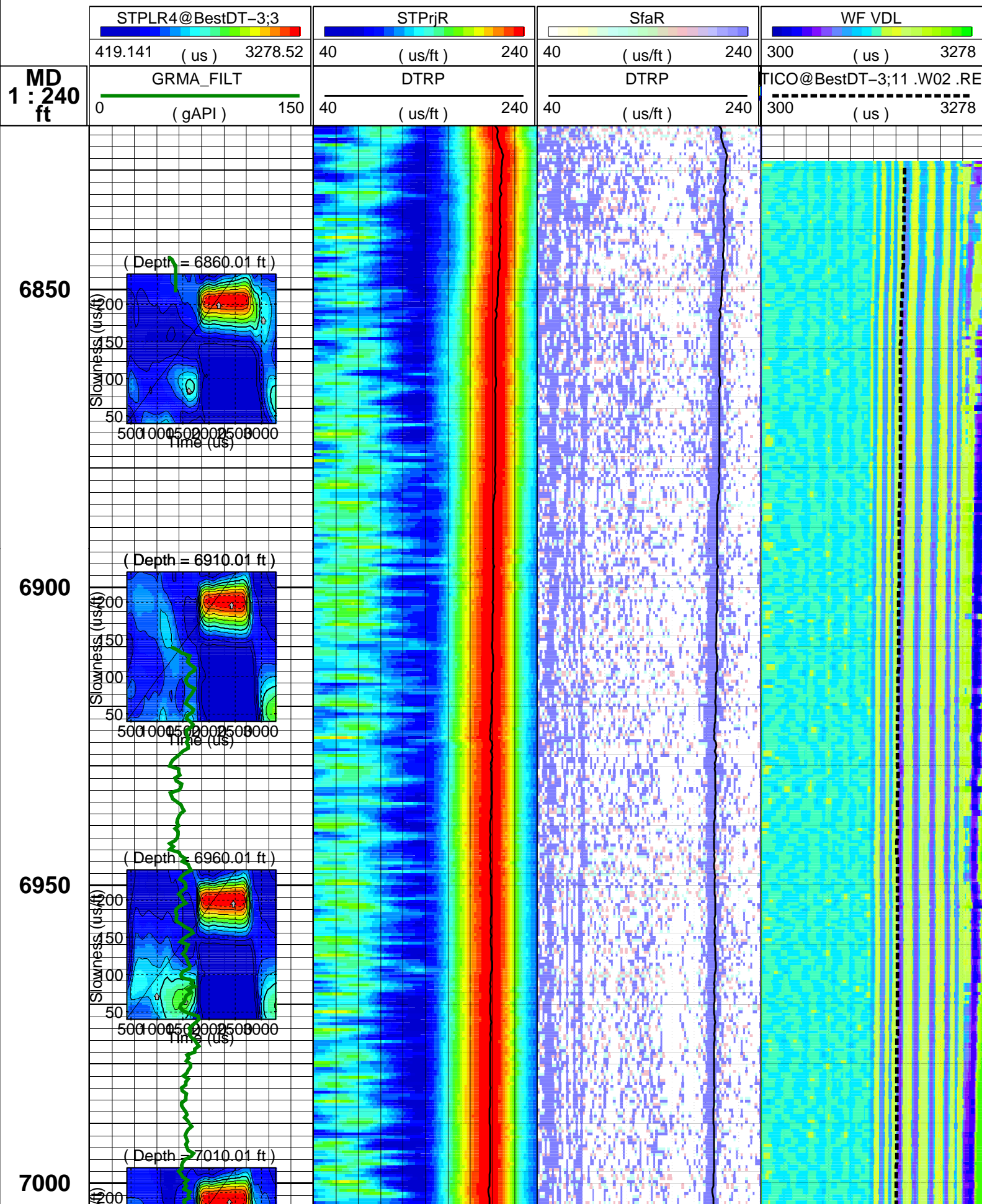
COMPANY:	Chevron U.S.A., Inc.		
WELL:	JIP III GC 955 I		
FIELD:	Green Canyon		
County:			
State:	Louisiana		
COUNTRY:	U.S.A.		
Date Logged:	21-Apr-2009	Date Processed:	28-April-2009
Well Location:	NAD27 15N, ft.		
	X = 2479847.00 ft		
Elevations:			
	KB:	DF: 52ft	GL: -6765ft
API Number:	608114354400	Job Number:	

FOLD HERE The well name, location and borehole reference data were furnished by the customer.

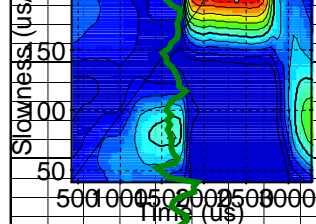
All interpretations are opinions based on inferences from electrical or other measurements and we cannot, and do not guarantee the accuracy or correctness of any interpretation, and we shall not, except in the case of gross or willful negligence on our part, be liable or responsible for any loss, costs, damages or expenses incurred or sustained by anyone resulting from any interpretations made by any of our officers, agents or employees. These interpretations are also subject to Clause 4 of our General Terms and Conditions as set out in our current Price Schedule.

Field Recording:	Location: Upper Module	Software Version: 20C0-999	Engineer:
Office Recording:	ICS Center: Lafayette	Baseline:	Log Analyst: Bill Lawton
Mud and Borehole Measurements:			
Rm @ Measured Temperature: 0.23ohm.m @ 57degF		BHT: 40degF	Bitsize: 8.5in
Rmf @ Measured Temperature: 0.23ohm.m @ 57degF		Type Fluid in Hole:	Sea Water
Rmc @ Measured Temperature: 0.23ohm.m @ 57degF		Mud Density: 10.5lbm/gal	

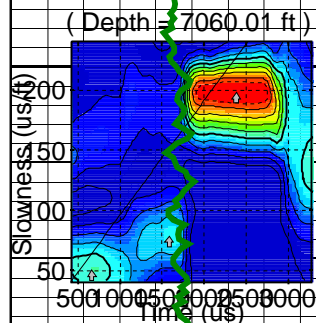
Remarks:



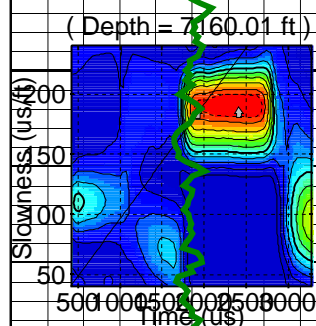
7050



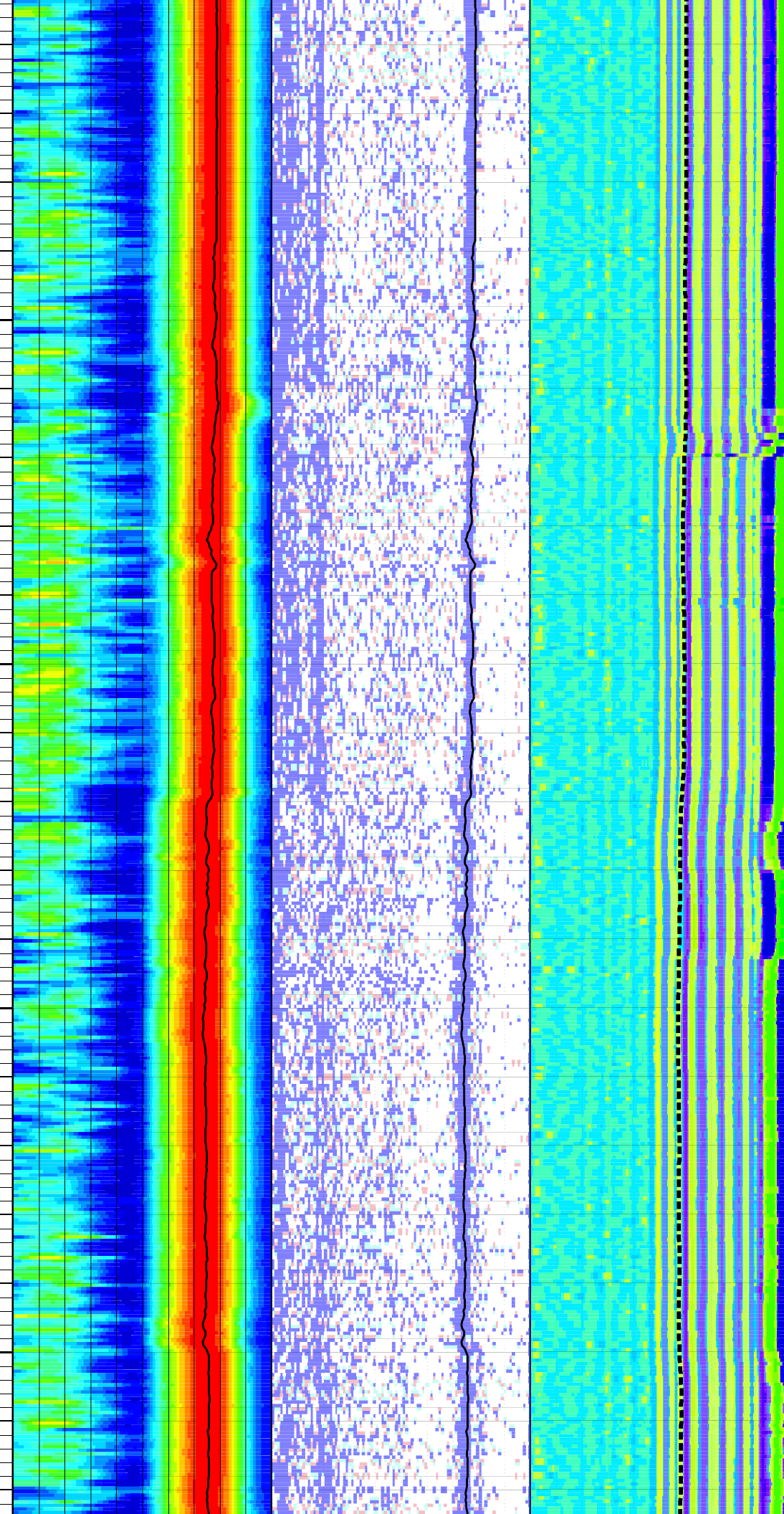
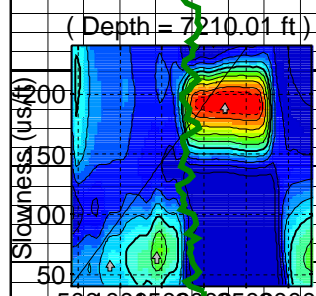
7100



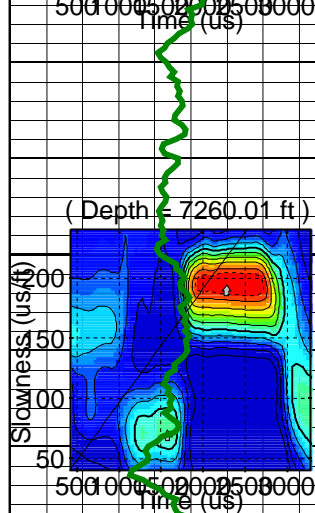
7150



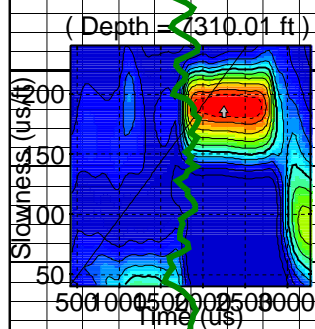
7200



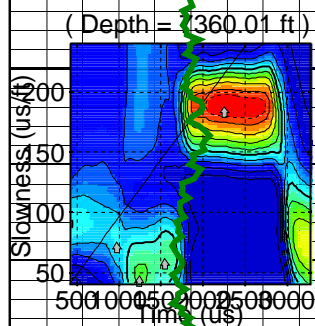
7250



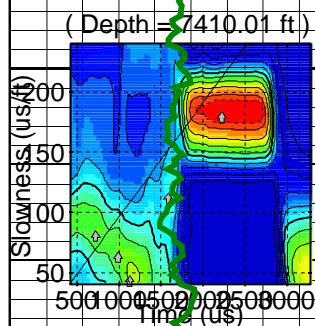
7300



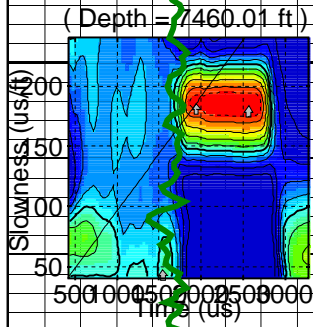
7350



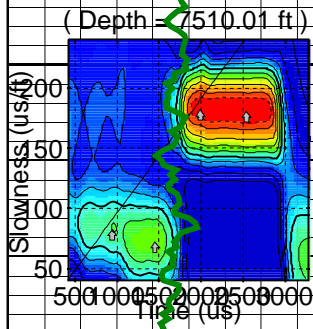
7400



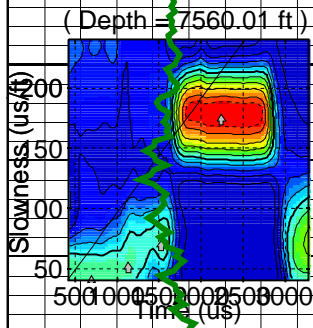
7450



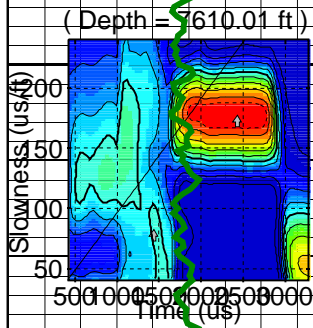
7500



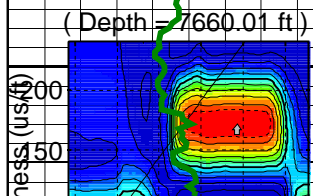
7550



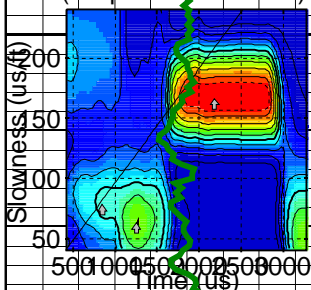
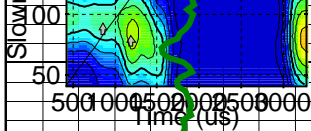
7600



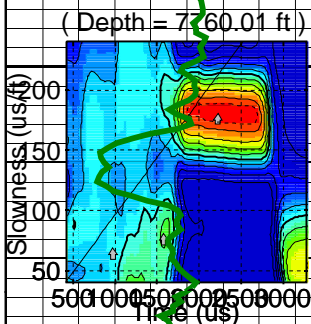
7650



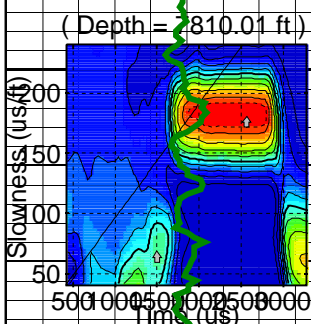
7700



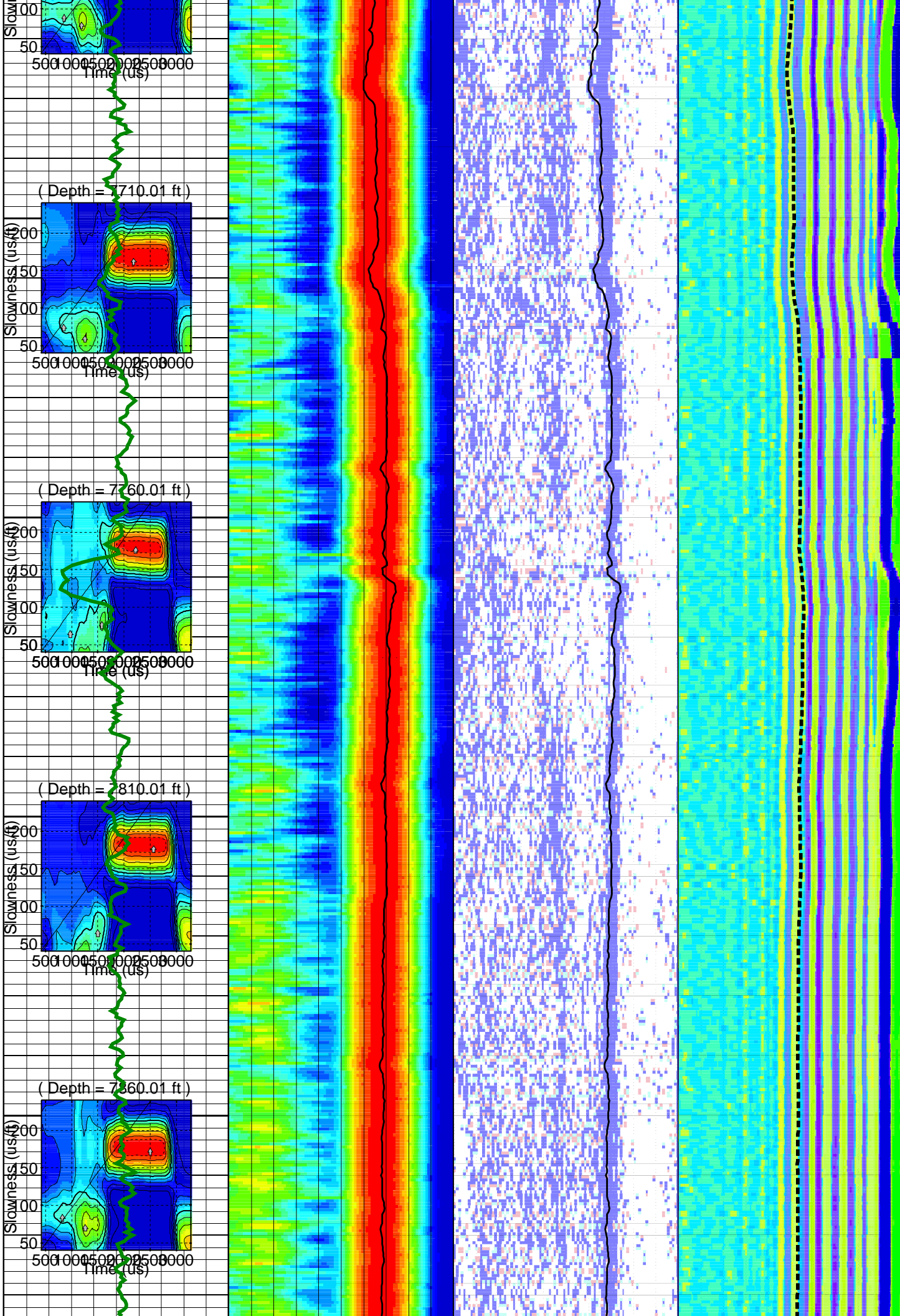
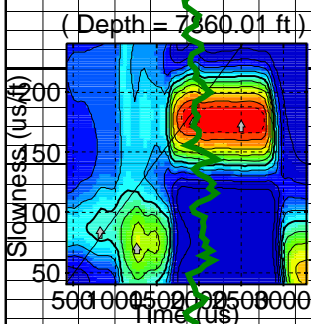
7750



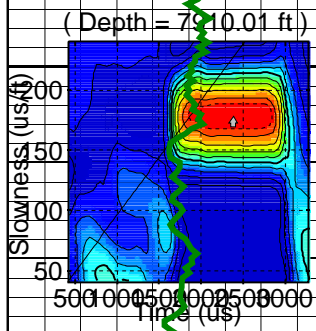
7800



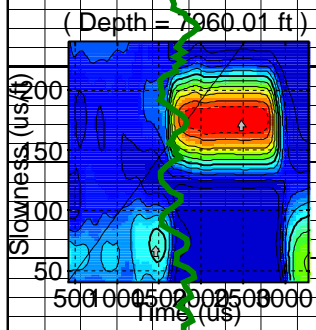
7850



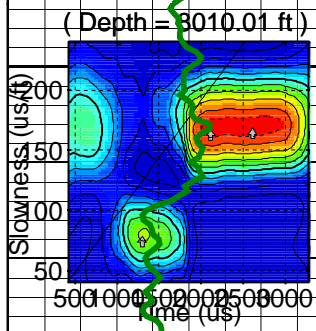
7900



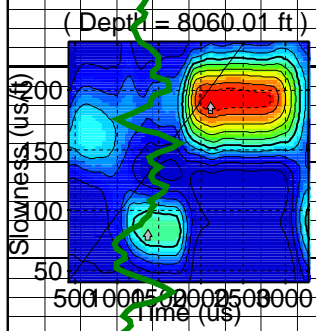
7950



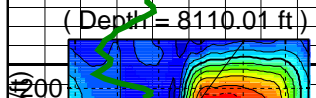
8000



8050



8100

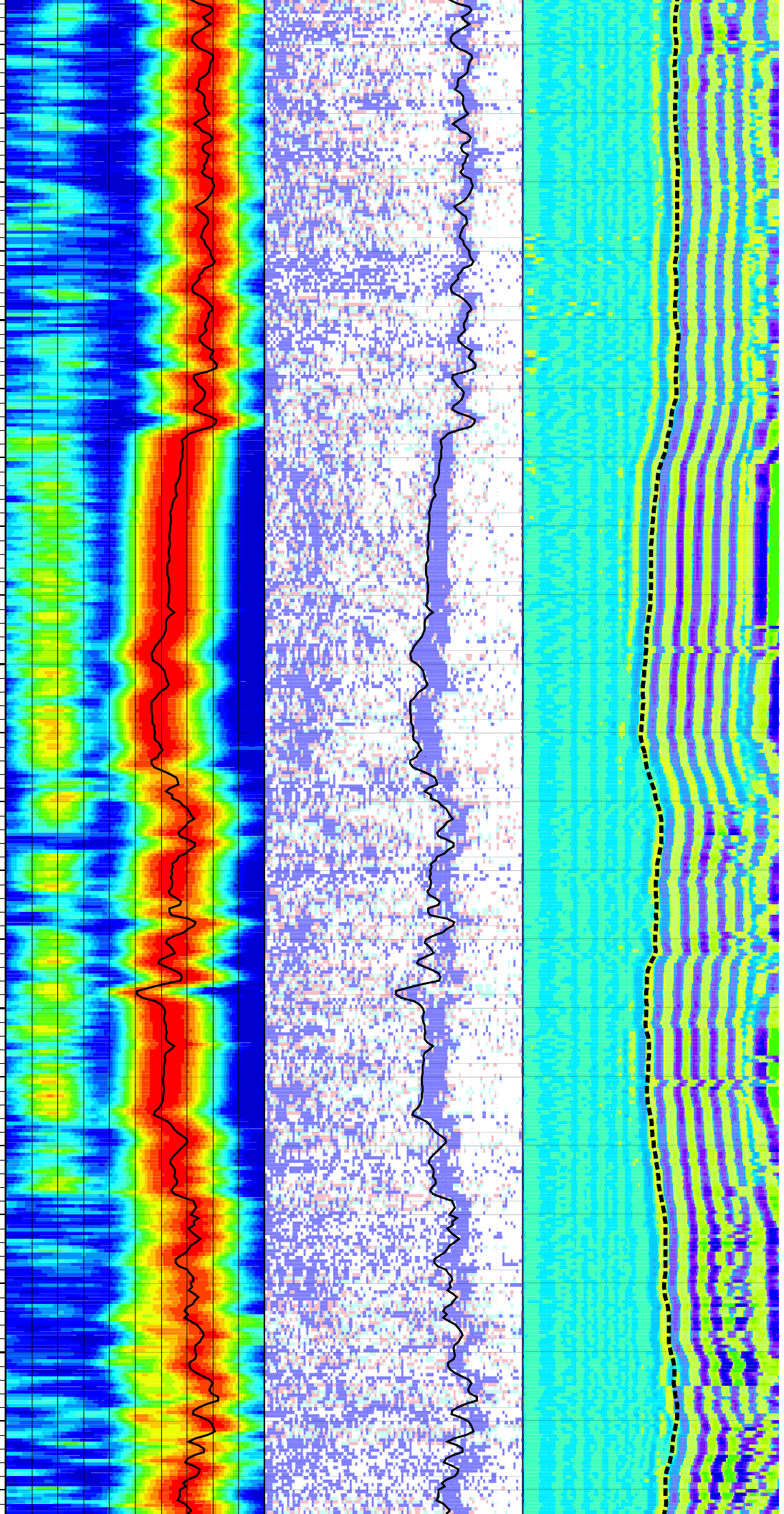
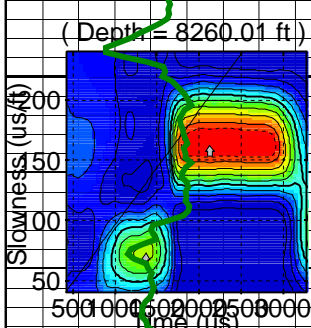
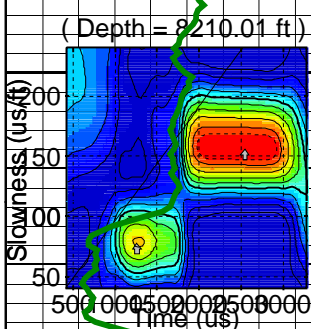
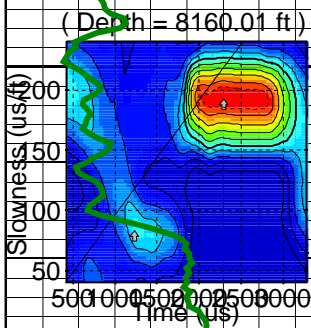
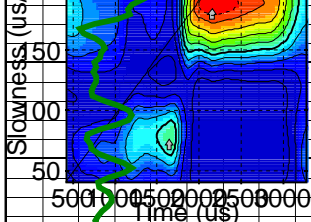


8150

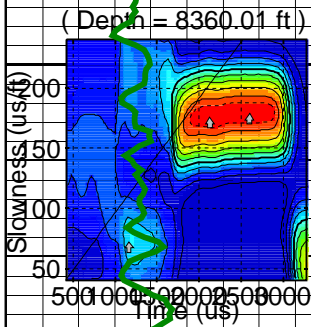
8200

8250

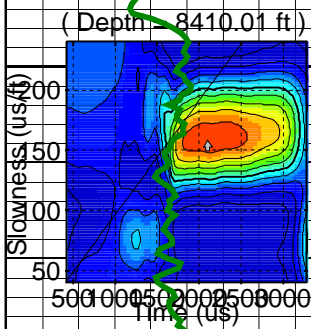
8300



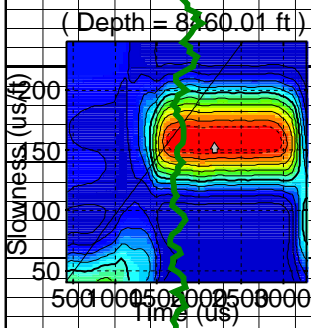
8350



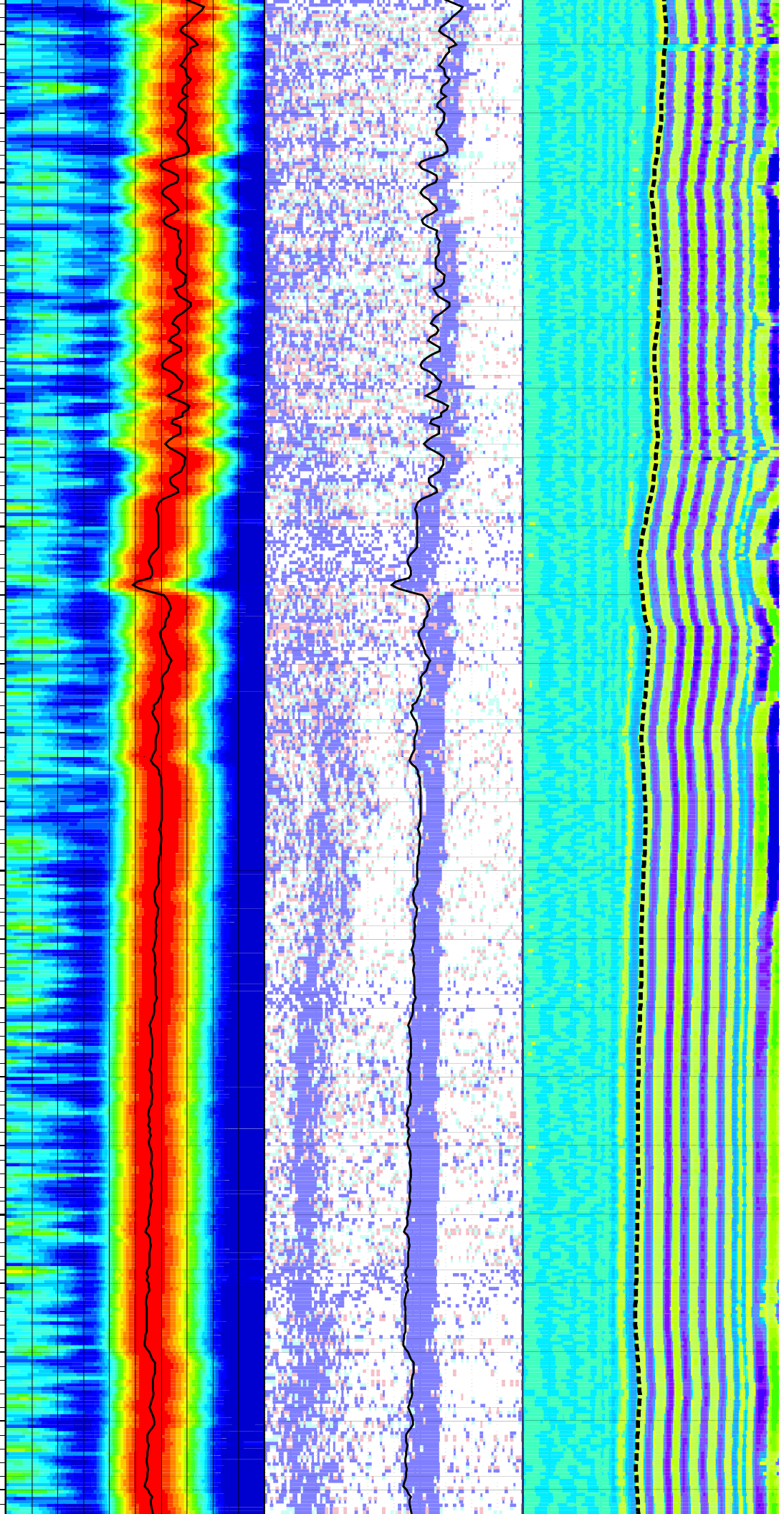
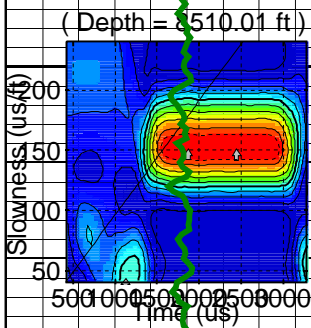
8400



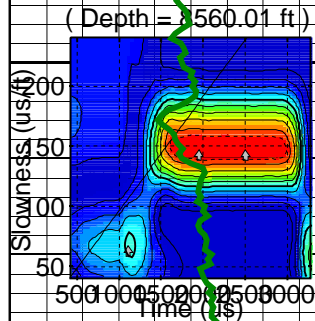
8450



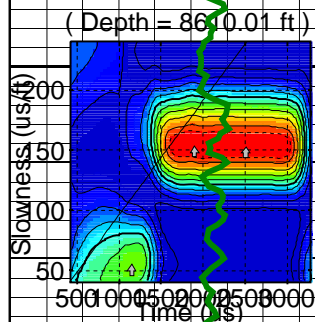
8500



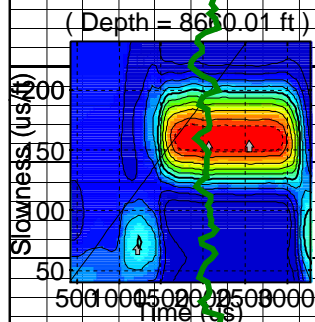
8550



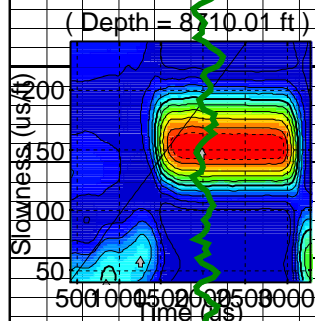
8600



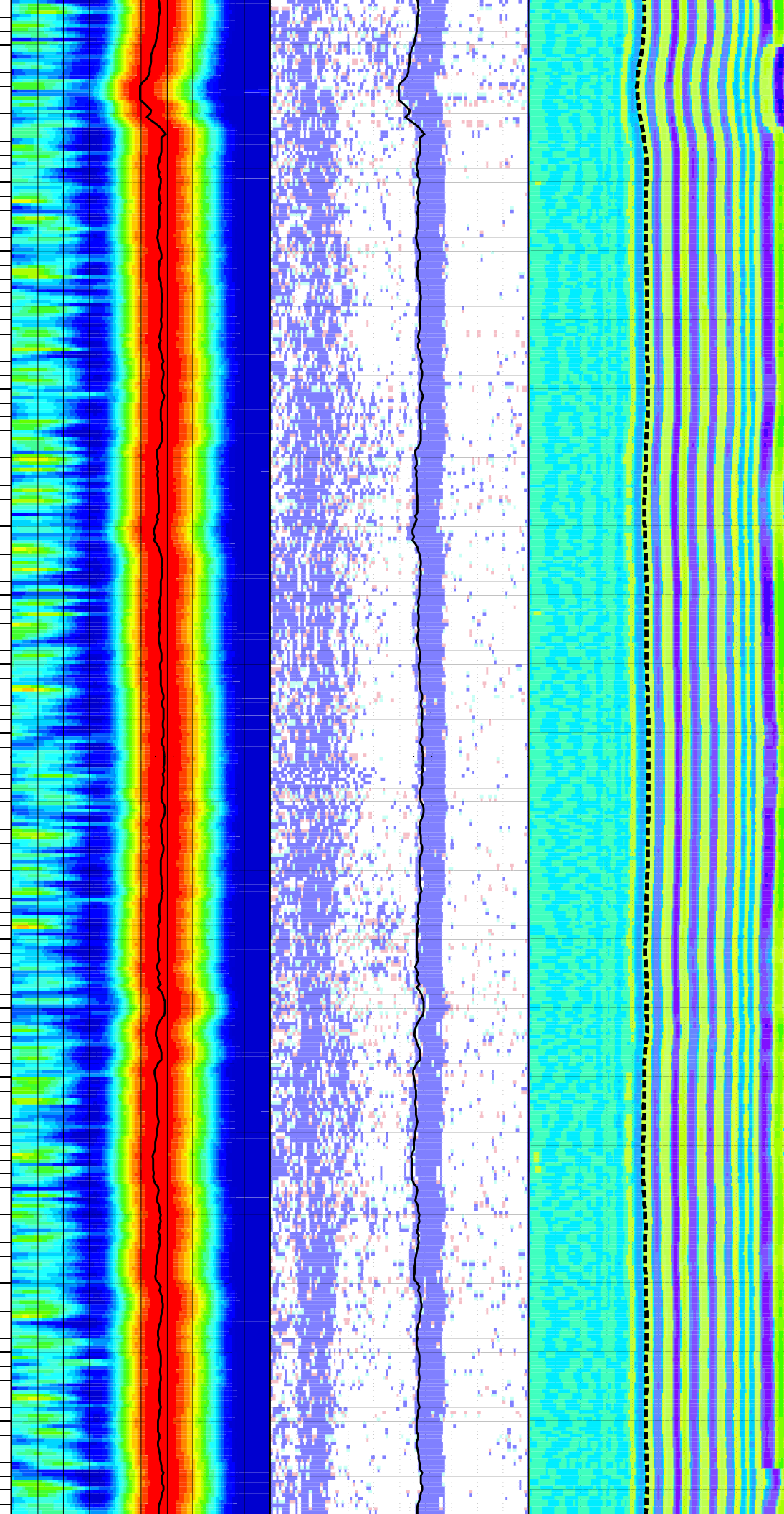
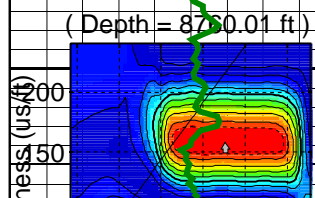
8650

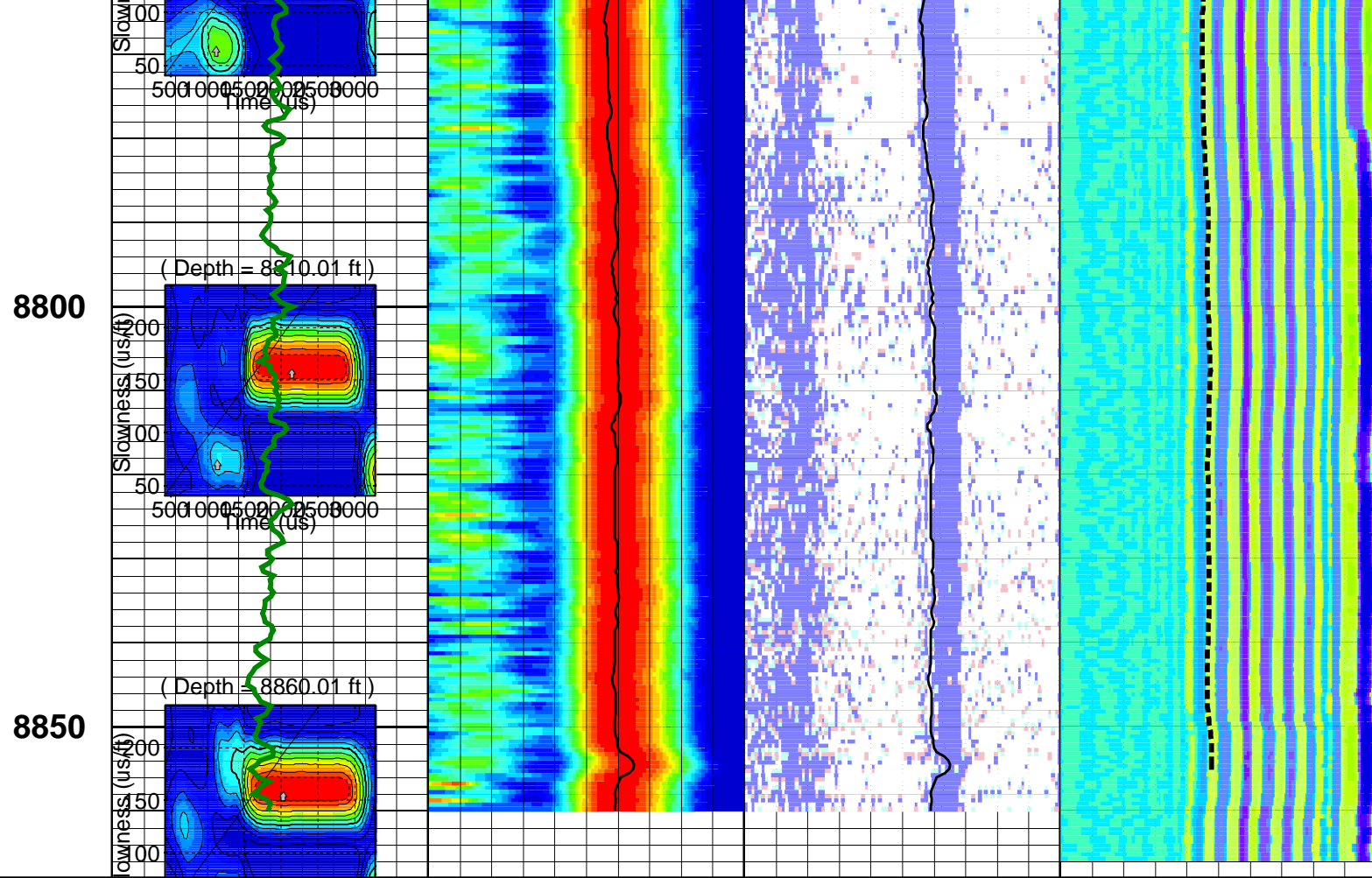


8700



8750





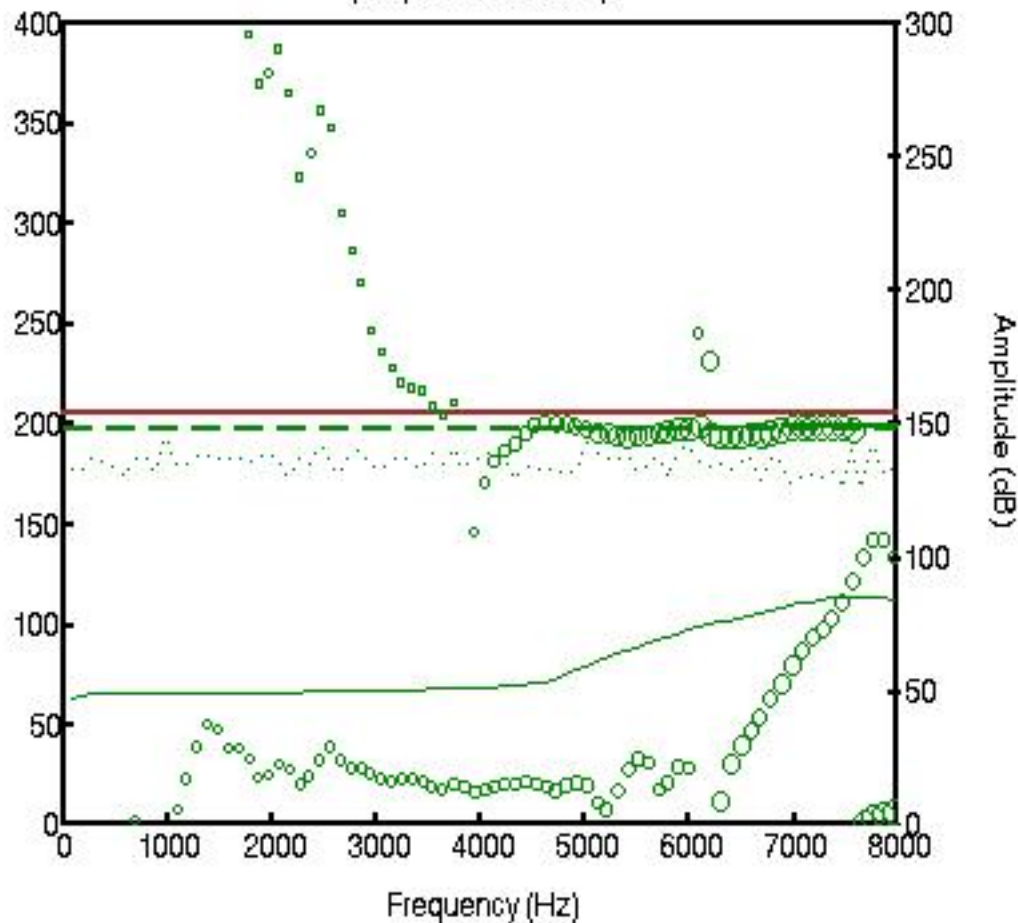
Customized Process: Start Depth (8860.01 ft), Stop Depth (6822.51 ft), Logging Mode (ISONIC – MPS_VSLP)
Noise Cut Filtering(No), Casing Cut Filtering(No)
WF_FLG(1 1 1 1), MUD_TYPE(WBM), DTMUD(205), STCAL(Full Array)
TRSPAC(9.85), RRSPAC(0 0.666667 1.33333 2)
Hole Diameter (no input)
Zoning Guide (no input)
Tracking Guide (no input)

---- Zone Top Depth (0), Zone Name (Zone1) ----
SFTY(Extremely Slow), BHS(OPEN), CSIZ(7), HDM(Fix*), HD(8.5), DFNM(Vp/Vs Based*), DFVPVS(4*)
TWI(714.844*), SLL(40.4227*), SUL(240.409*), SST(2.12751*), TLL(419.141), TUL(3278.52), TST(39.7135)
SBW(1500*), SBO(550), SWD(20), TWD(900), SEM(0.45), FLENG(49*), FLOW(2500*), FHIGH(4000*)
TKO_MODEL_ORDER(2), TKO_TOL(50) TKO_FLOW(0), TKO_FHIGH(12000)

MD 1 : 240 ft	GRMA_FILT		DTRP		DTRP		TICO@BestDT-3;11 .W02 .RE
	0 (gAPI) 150		40 (us/ft) 240		40 (us/ft) 240		300 (us) 3278
	STPLR4@BestDT-3;3		STPrjR		SfaR		WF VDL
	419.141 (us) 3278.52		40 (us/ft) 240		40 (us/ft) 240		300 (us) 3278

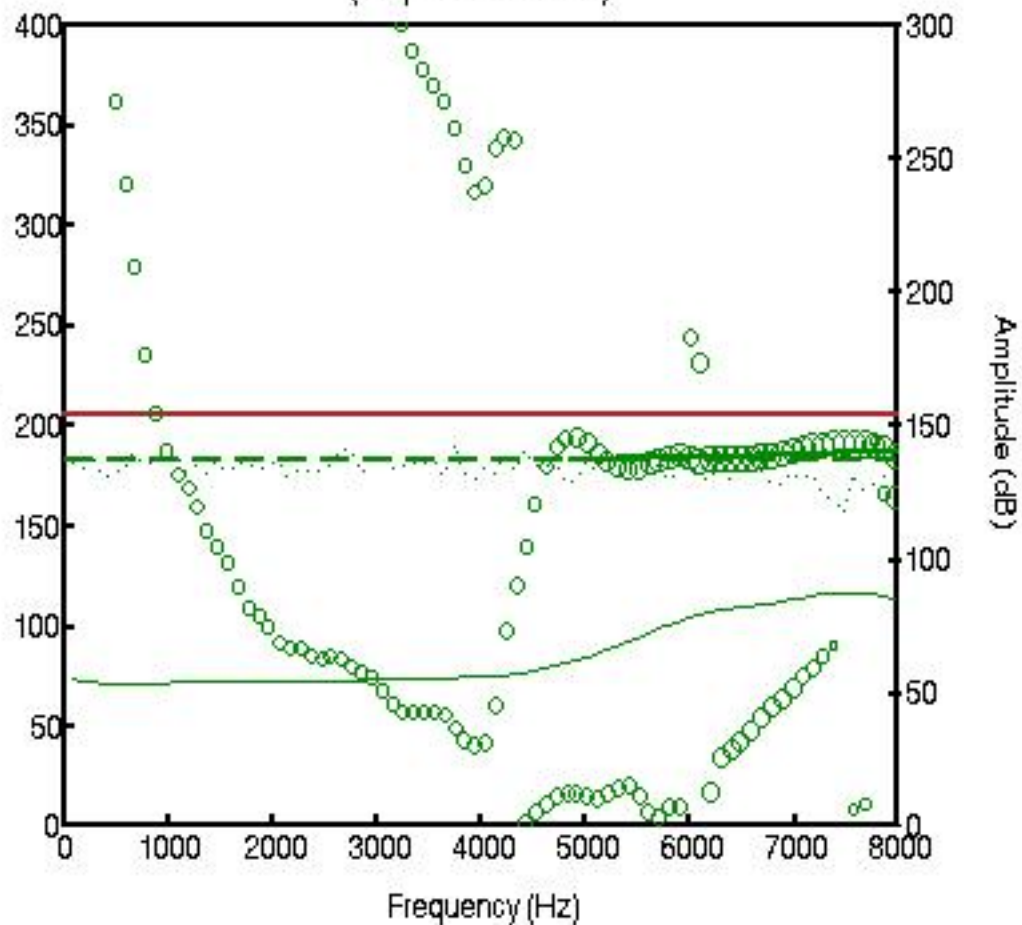
Slowness Dispersion Plot

(Depth= 7000.01 ft)



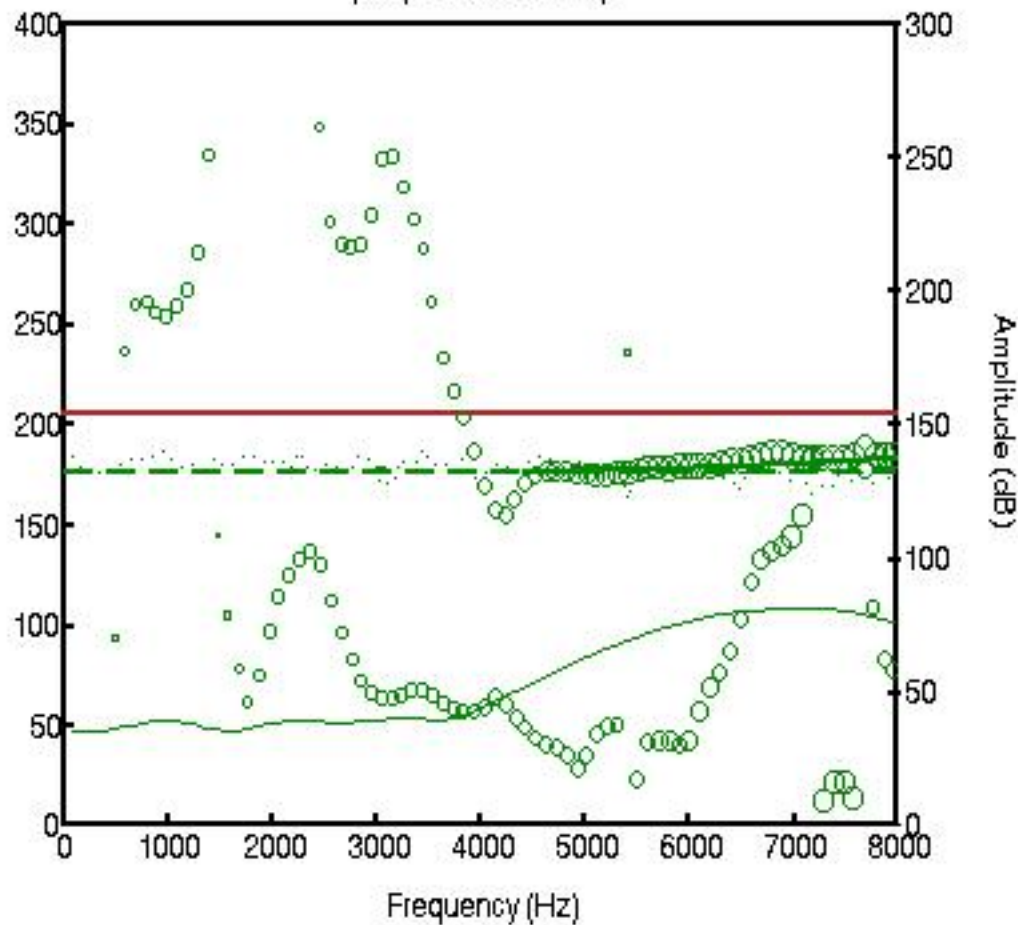
Slowness Dispersion Plot

(Depth = 7500.01 ft)



Slowness Dispersion Plot

(Depth= 8000.01 ft)



Slowness Dispersion Plot

(Depth = 8500.01 ft)

