



GEOFRAME
PROCESSED
INTERPRETATION

SonicVISION Well H

BestDT Leaky-P DT

*A Mark of Schlumberger

Using the following logs: SonicVISION

COMPANY: Chevron U.S.A., Inc.
WELL: JIP II WR313 H
FIELD: Green Canyon 955
Rig: Helix Q4000
State: Louisiana
COUNTRY:
Date Logged: 30-Apr-09 Date Processed: 2-May-2009
Well Location: NAD 27
Elevations: KB: 51ft DF: 51ft GL: -6450ft
API Number: 608124004000 Job Number:

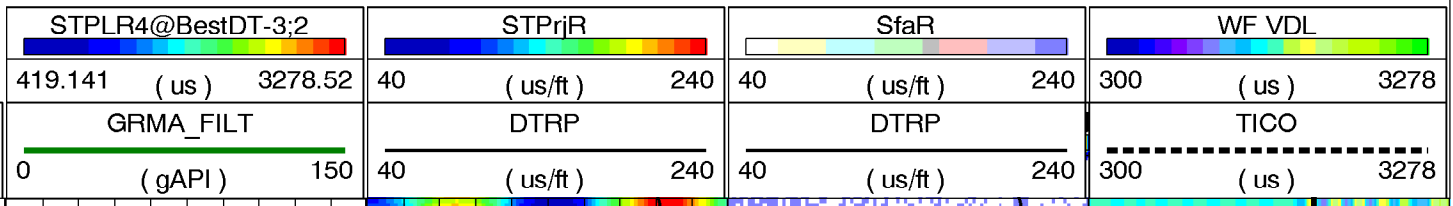
FOLD HERE The well name, location and borehole reference data were furnished by the customer.

All interpretations are opinions based on inferences from electrical or other measurements and we cannot, and do not guarantee the accuracy or correctness of any interpretation, and we shall not, except in the case of gross or willful negligence on our part, be liable or responsible for any loss, costs, damages or expenses incurred or sustained by anyone resulting from any interpretations made by any of our officers, agents or employees. These interpretations are also subject to Clause 4 of our General Terms and Conditions as set out in our current Price Schedule.

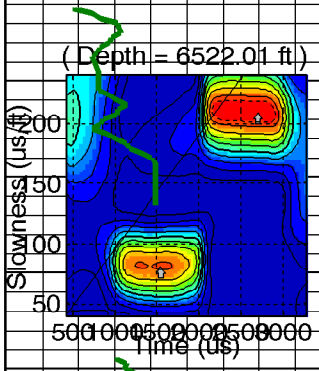
| | | | |
|--|--------------------------|----------------------------|--------------------------|
| Field Recording: | Location: | Software Version: 14C0-108 | Engineer: |
| Office Recording: | ICS Center: | Baseline: | Log Analyst: Bill Lawton |
| Mud and Borehole Measurements: | | | |
| Rm @ Measured Temperature: 23ohm.m @ 57degF | BHT: 59degF | Bitsize: 8.5in | |
| Rmf @ Measured Temperature: 23ohm.m @ 57degF | Type Fluid in Hole: | WBM | |
| Rmc @ Measured Temperature: 23ohm.m @ 57degF | Mud Density: 10.5lbm/gal | | |

Remarks:

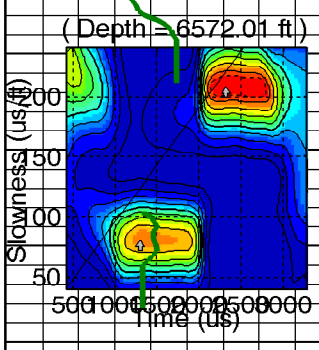
MD
1 : 240
ft



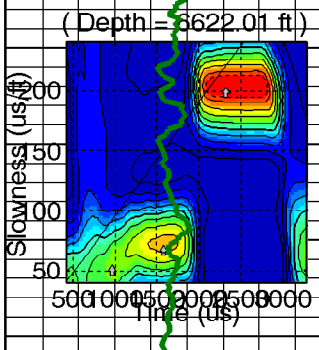
6500



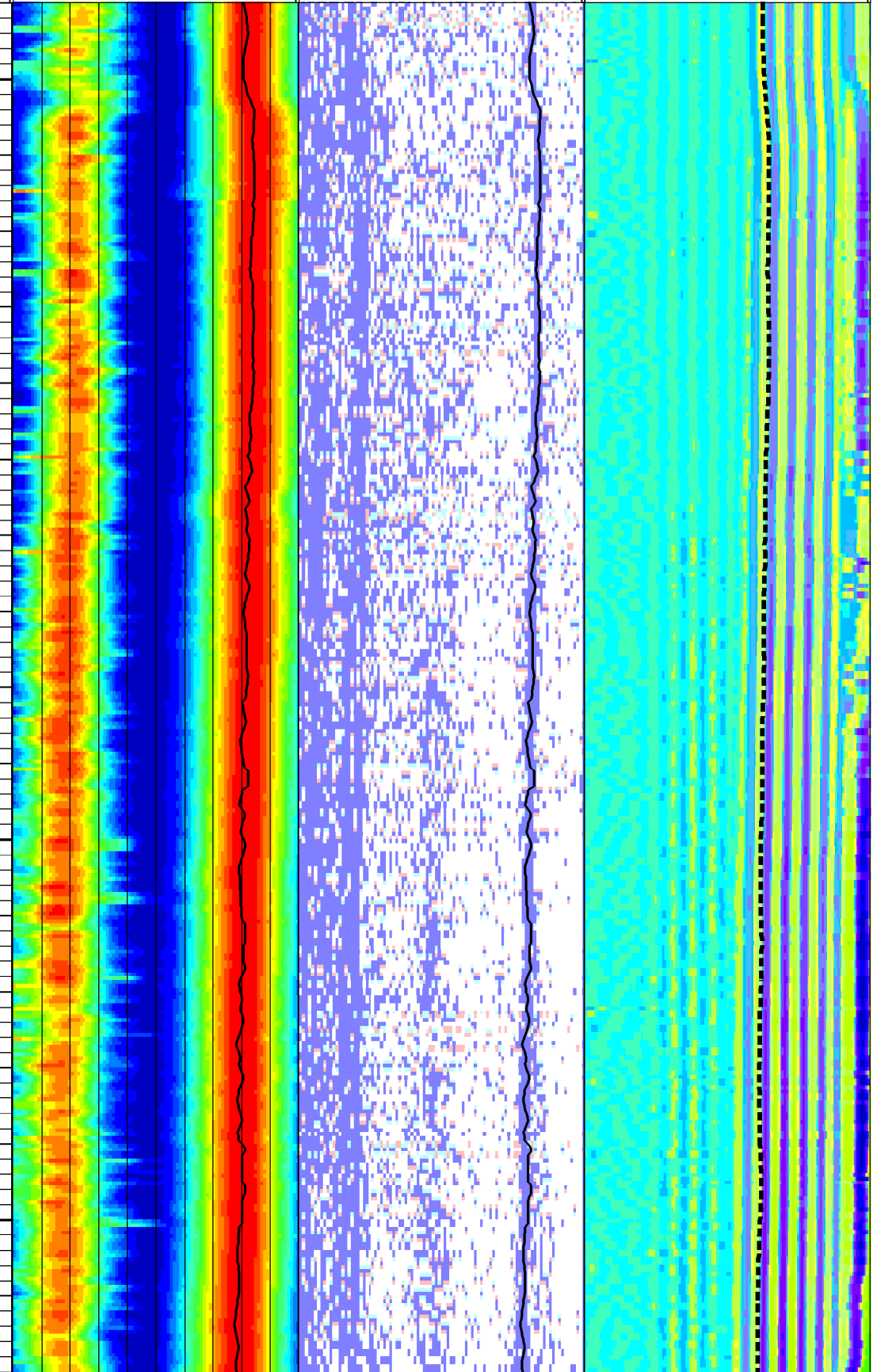
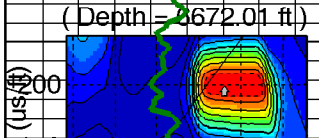
6550



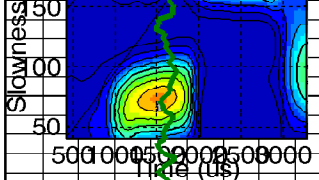
6600



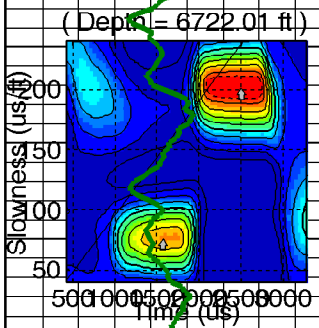
6650



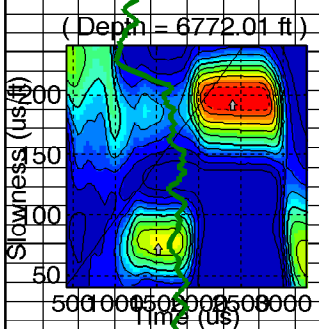
6700



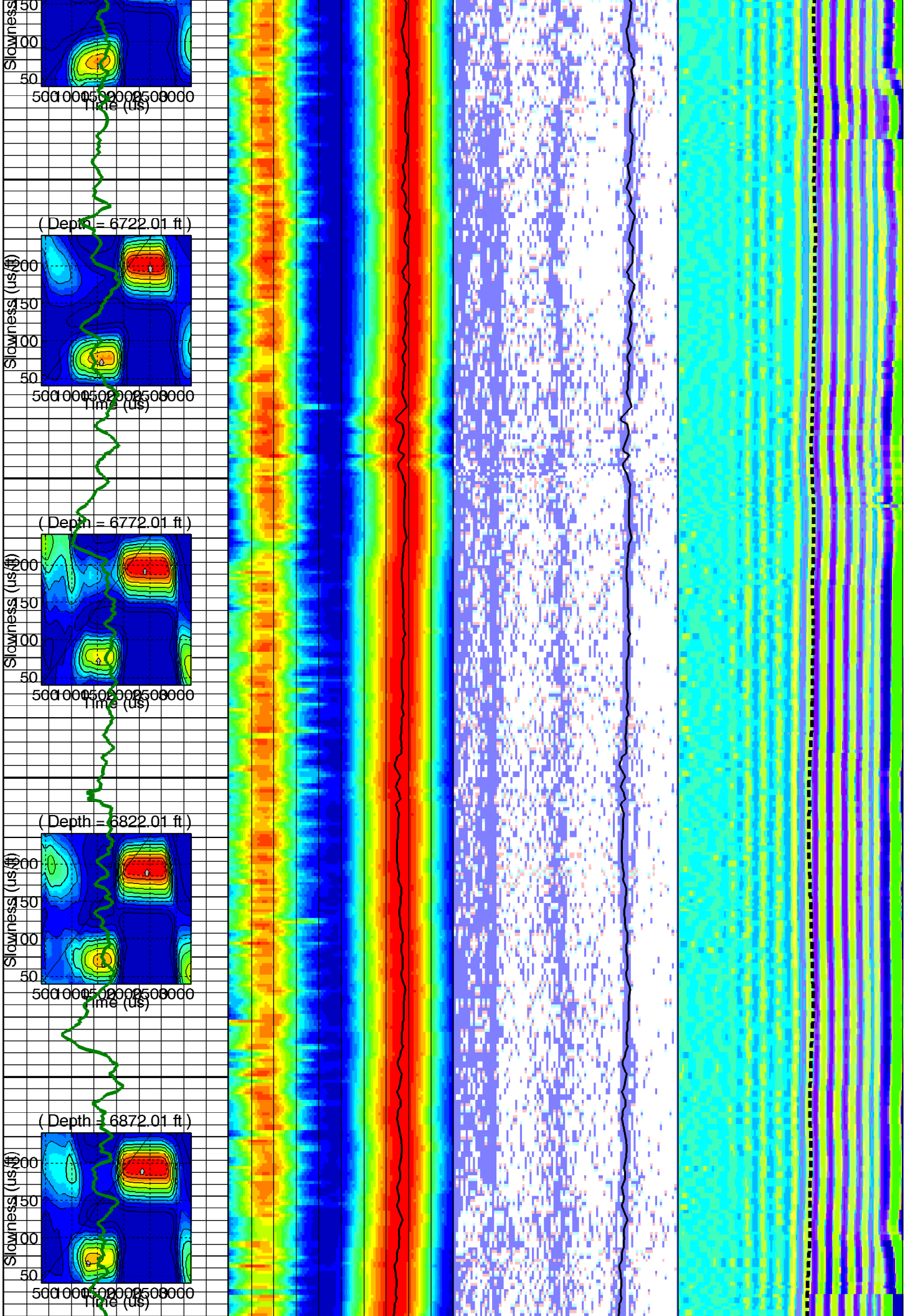
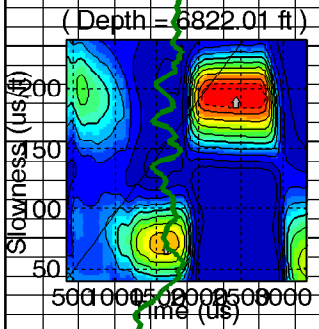
6750



6800

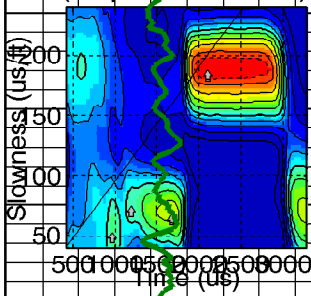


6850



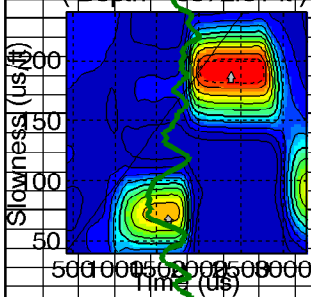
6900

(Depth = 6922.01 ft.)



6950

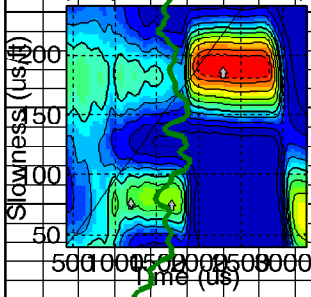
(Depth = 6972.01 ft.)



Very Slow
Very Slow

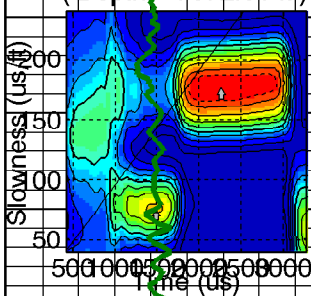
7000

(Depth = 7022.01 ft.)



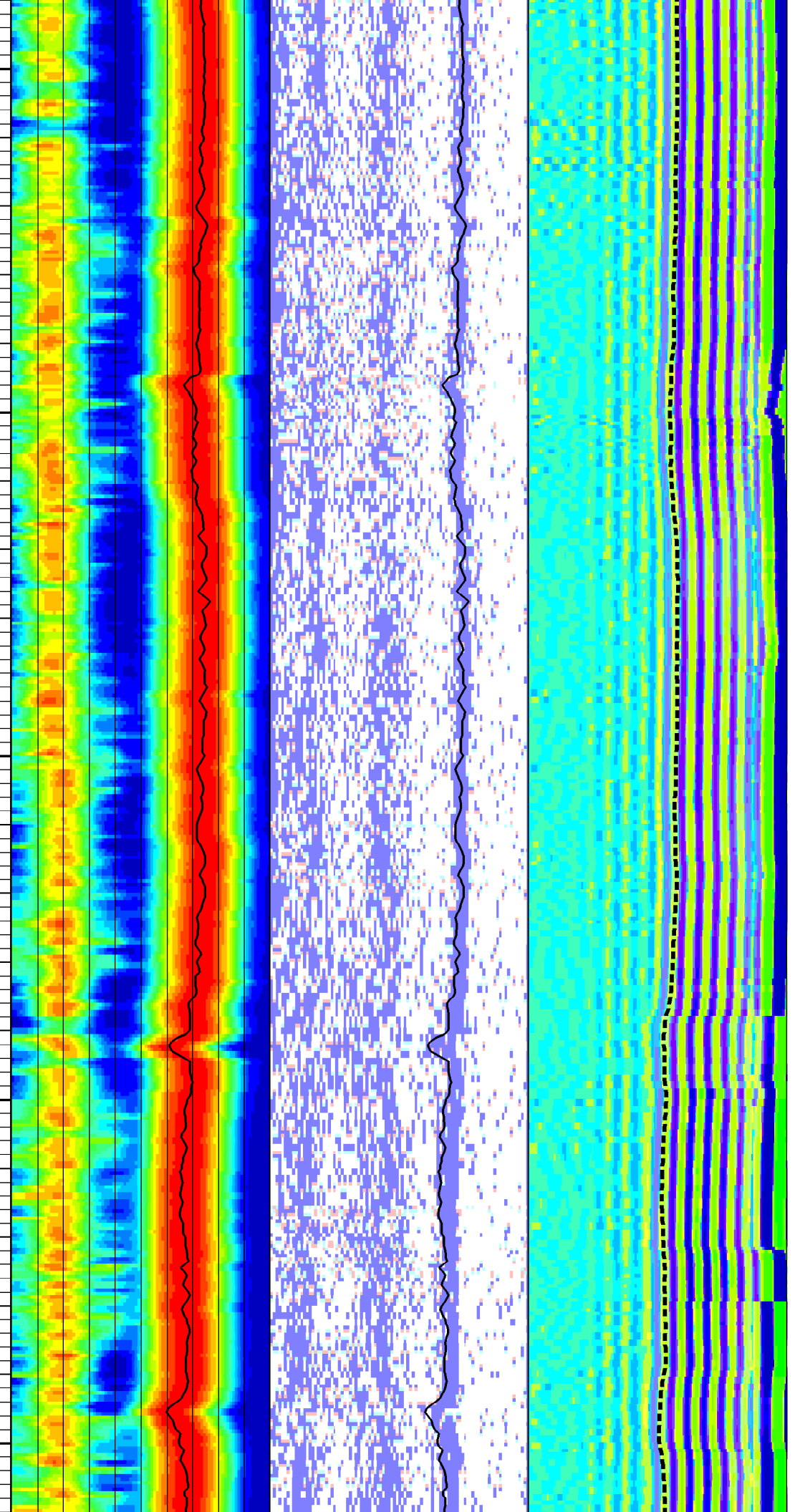
7050

(Depth = 7072.01 ft.)

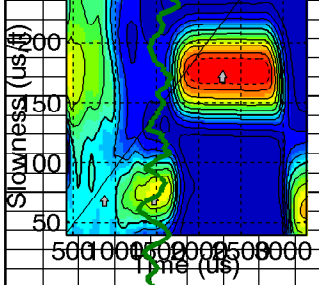


7100

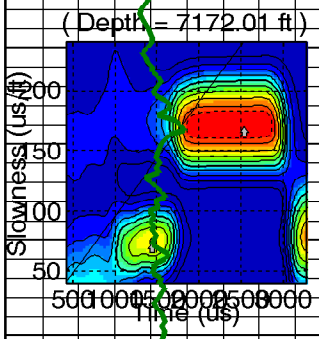
(Depth = 7122.01 ft.)



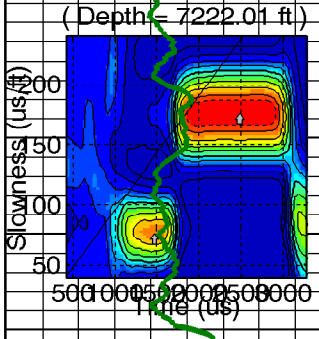
7150



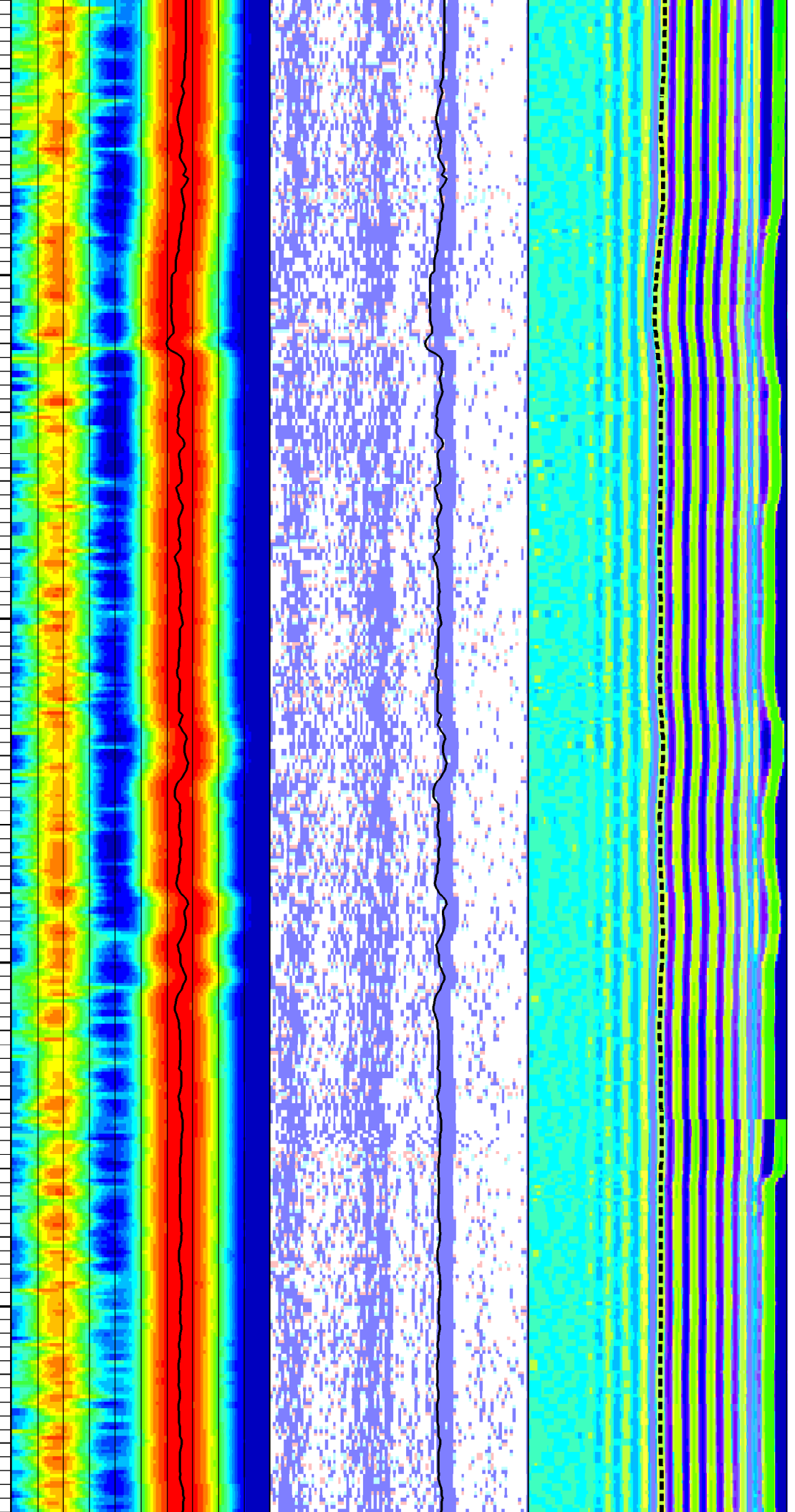
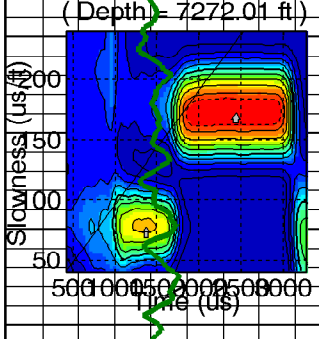
7200



7250

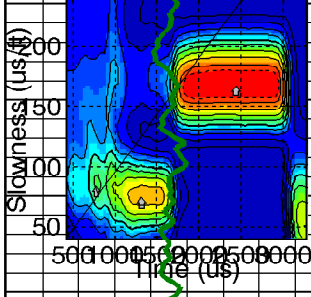


7300



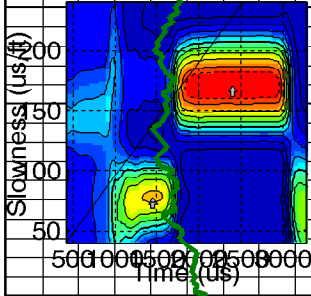
7350

(Depth = 7372.01 ft)



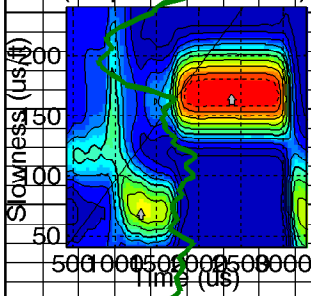
7400

(Depth = 7422.01 ft)



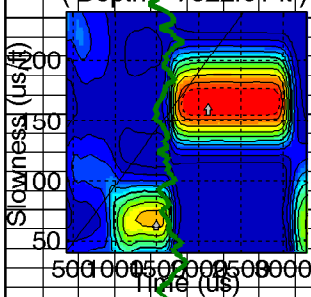
7450

(Depth = 7472.01 ft)

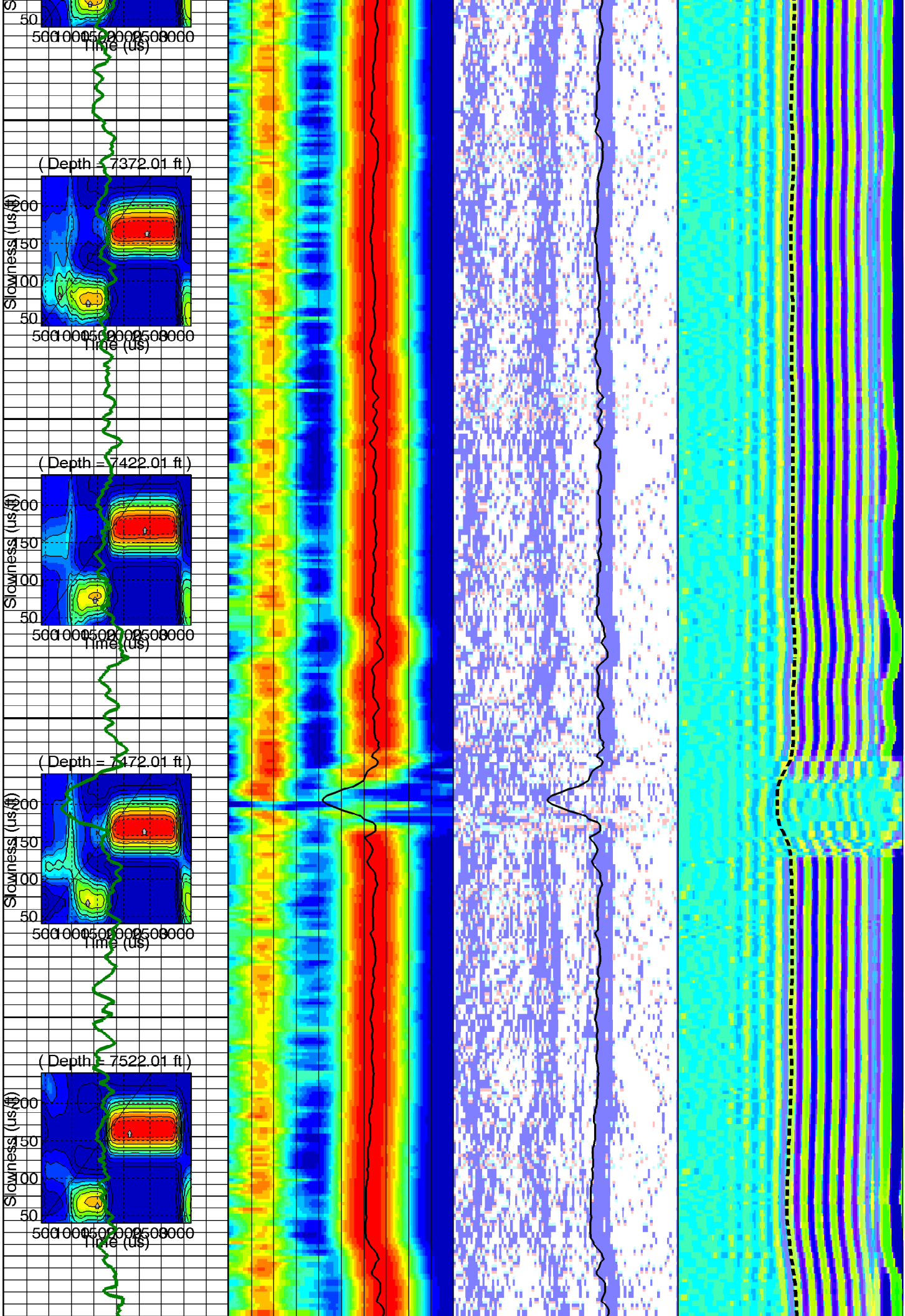


7500

(Depth = 7522.01 ft)

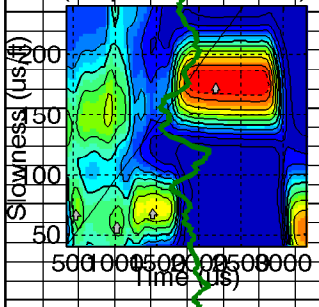


7550



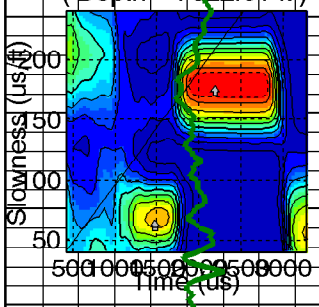
7550

(Depth = 7572.01 ft)



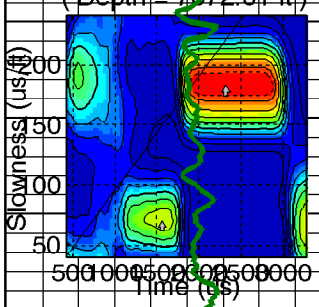
7600

(Depth = 7622.01 ft)



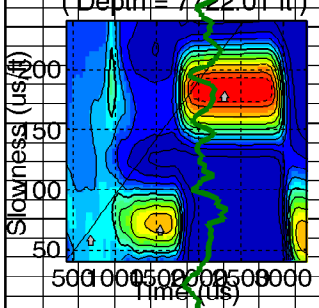
7650

(Depth = 7672.01 ft)



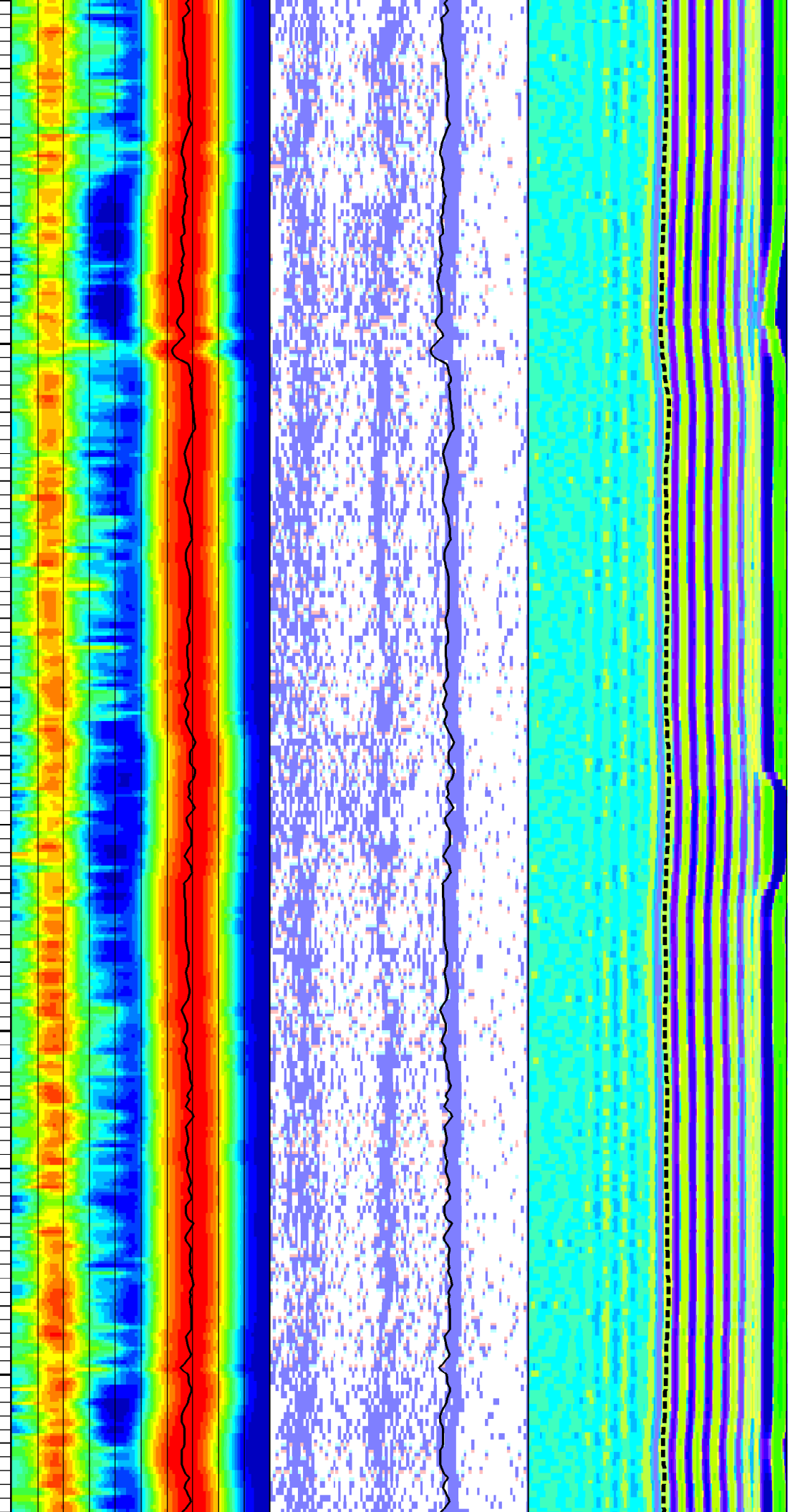
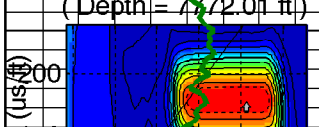
7700

(Depth = 7722.01 ft)

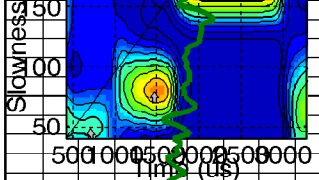


7750

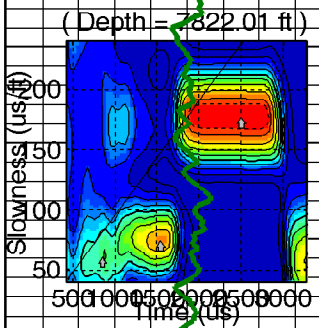
(Depth = 7772.01 ft)



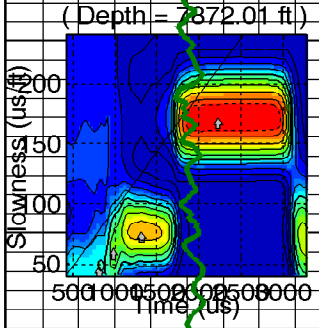
7800



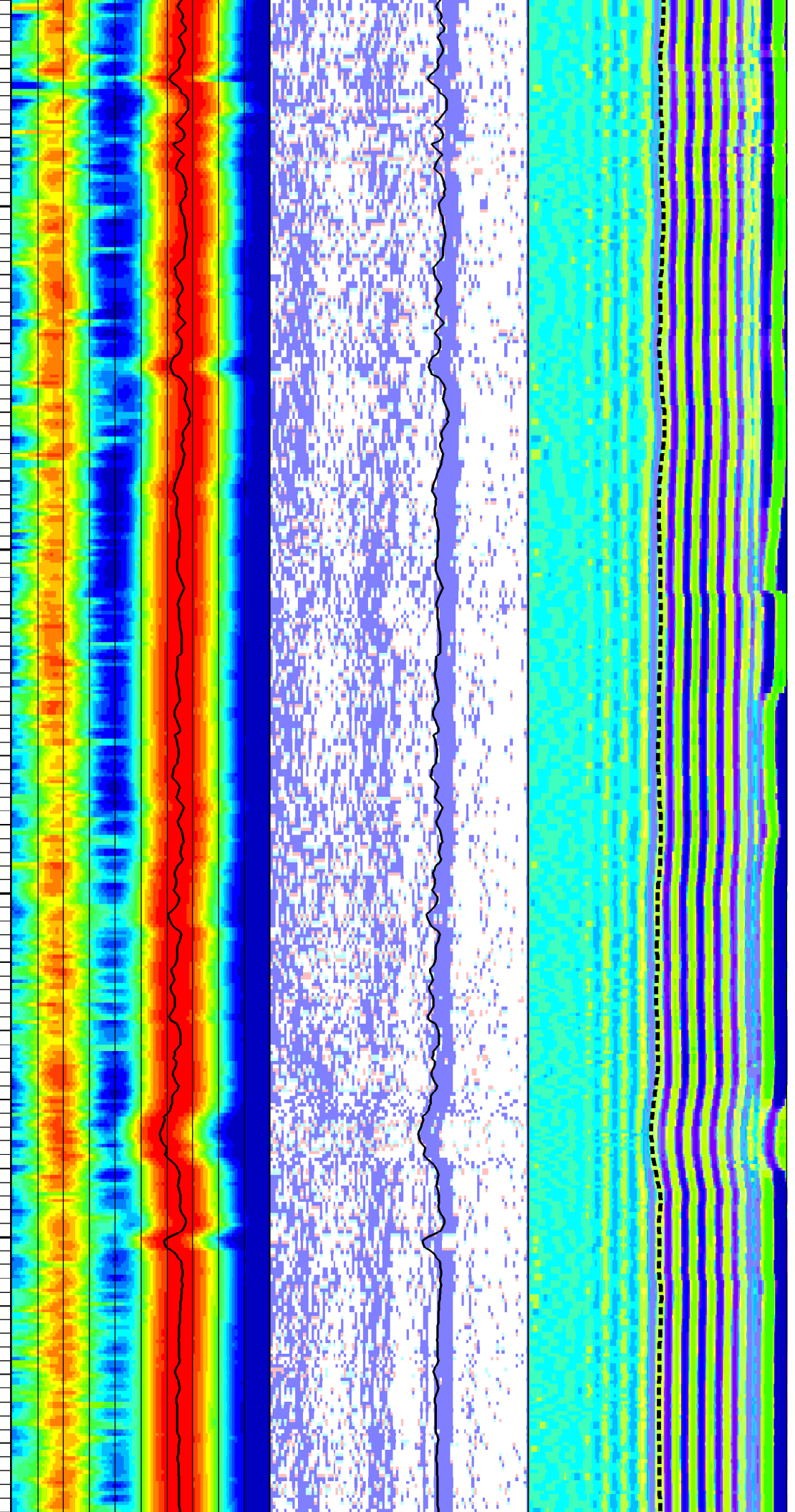
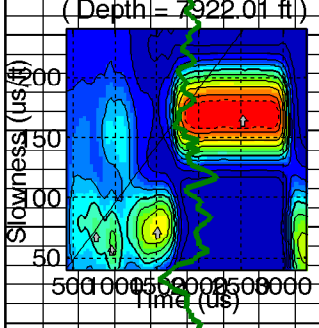
7850



7900

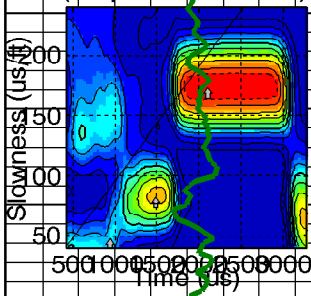


7950



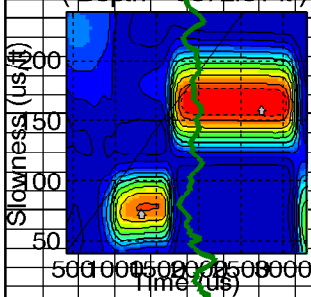
8000

(Depth = 8022.01 ft)



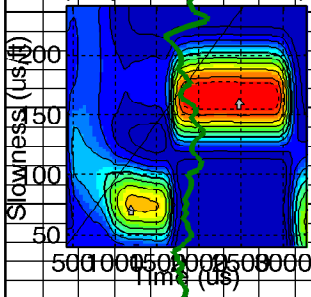
8050

(Depth = 8072.01 ft)



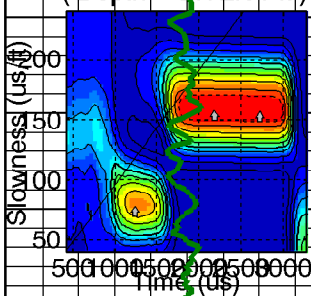
8100

(Depth = 8122.01 ft)



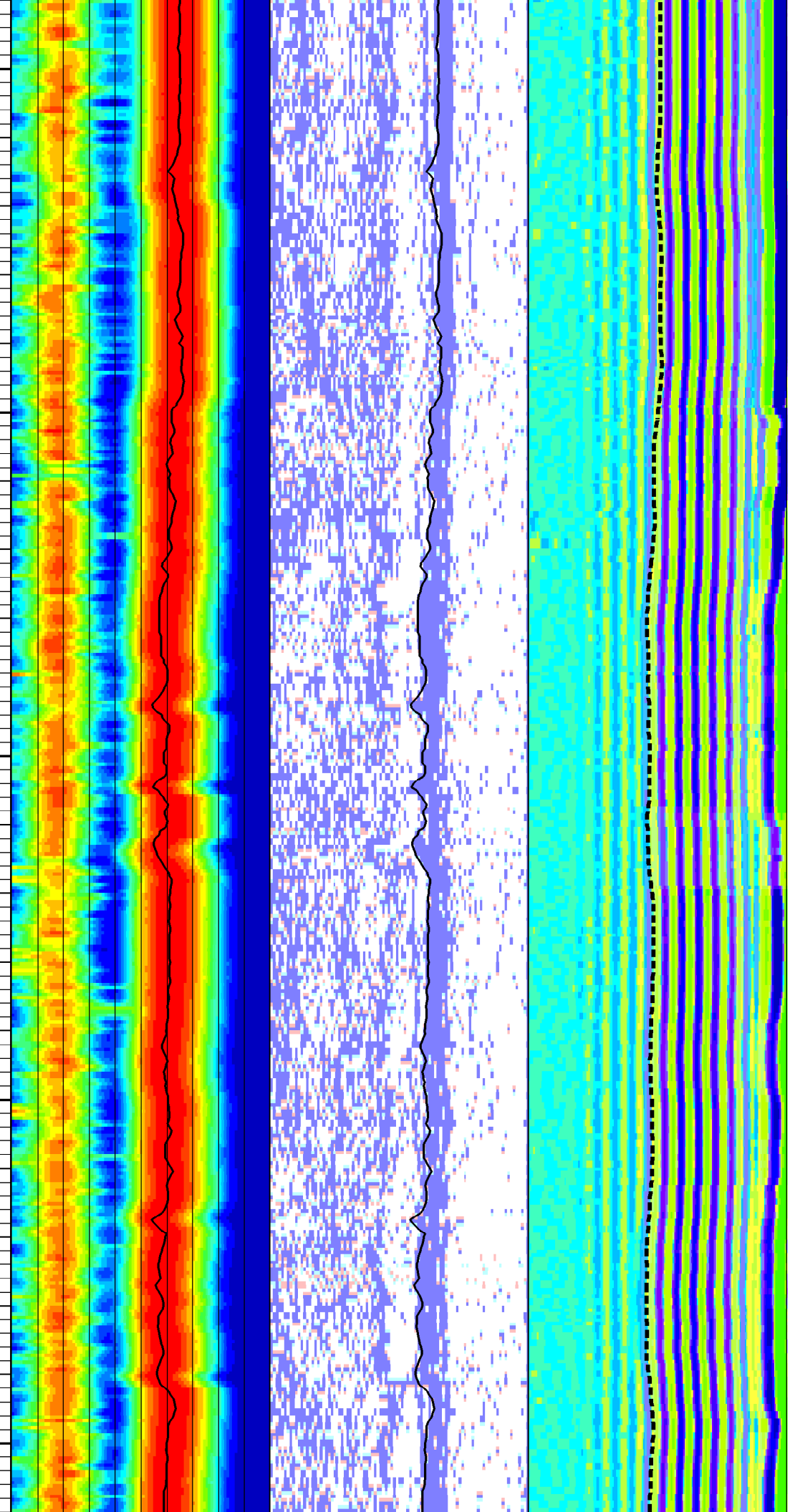
8150

(Depth = 8172.01 ft)

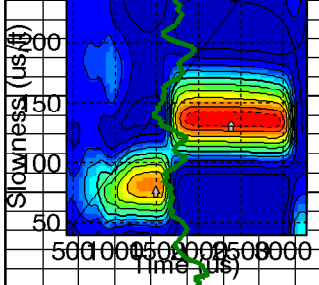


8200

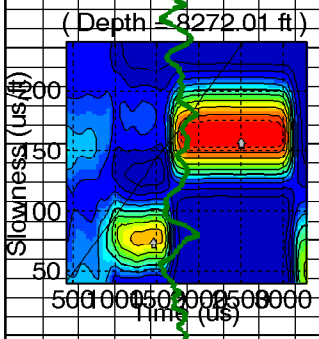
(Depth = 8222.01 ft)



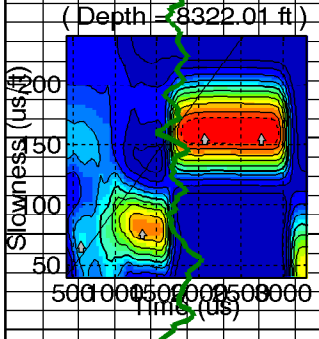
8250



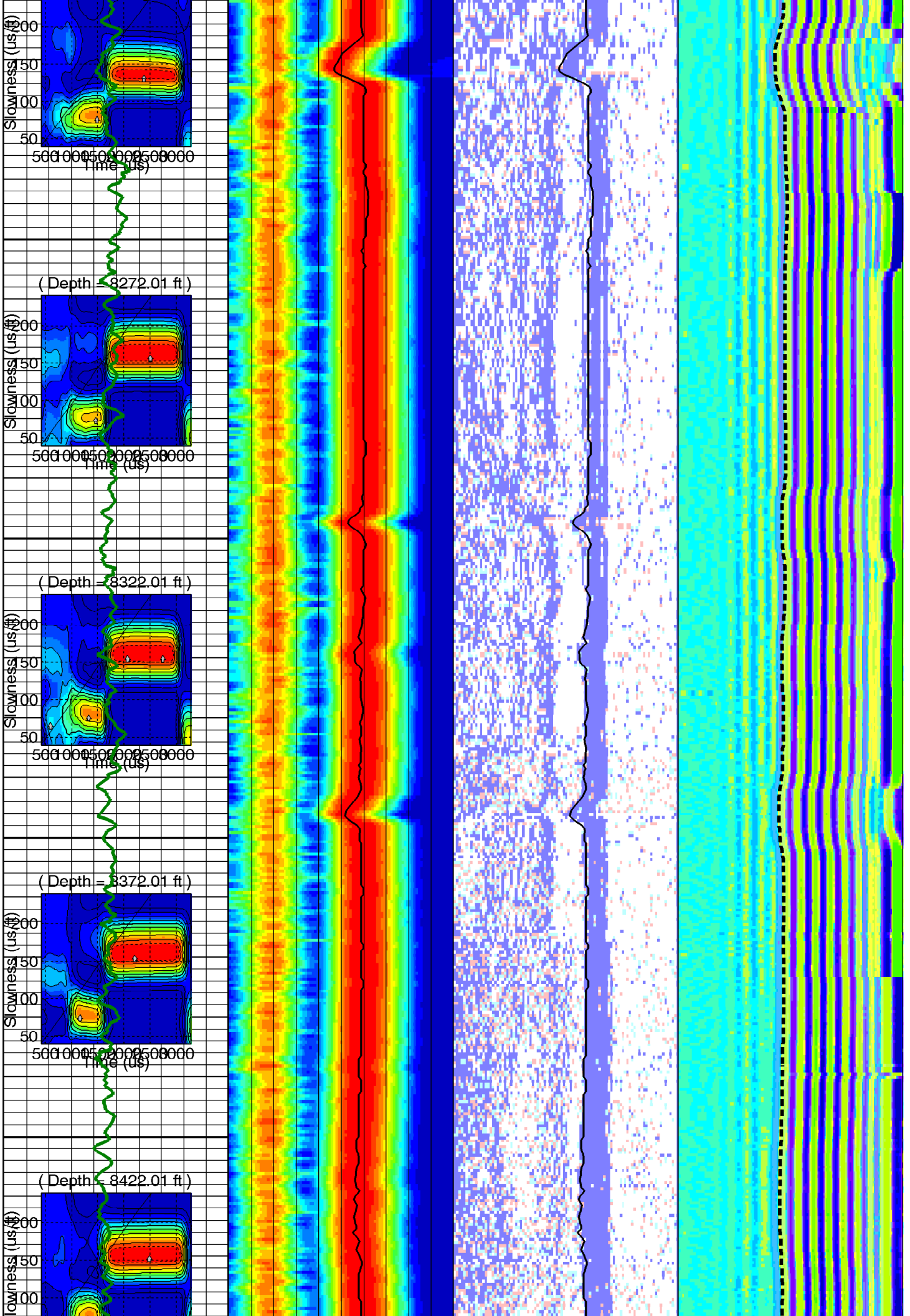
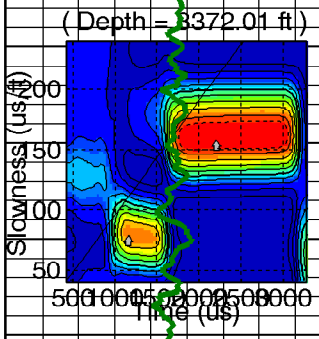
8300



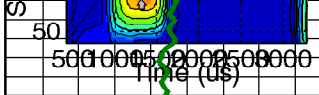
8350



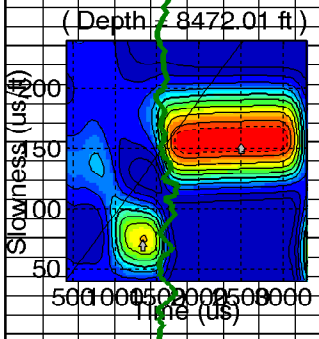
8400



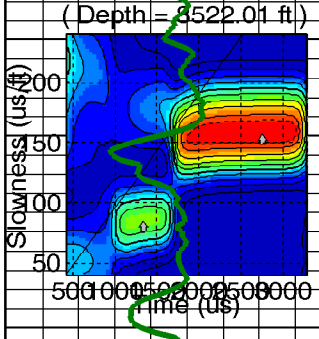
8450



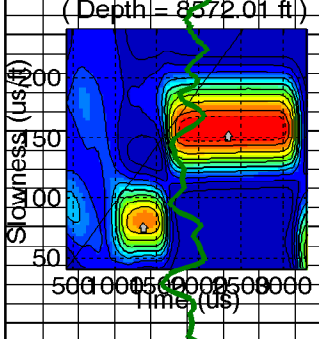
8500



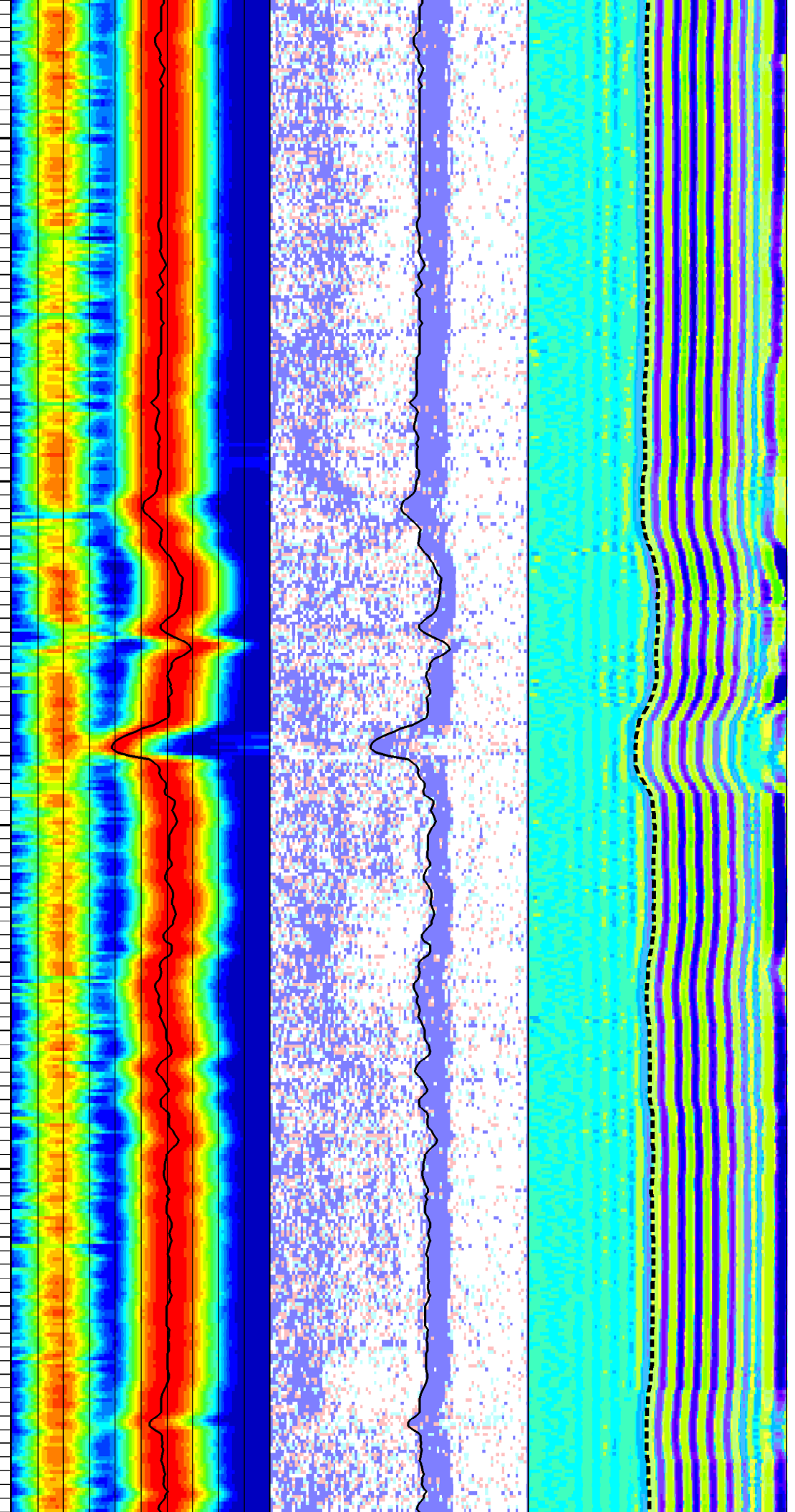
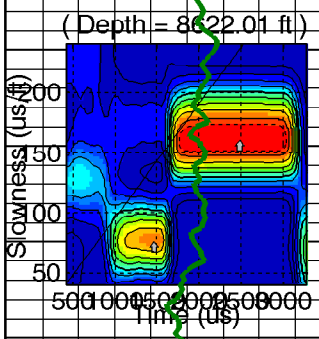
8550



8600

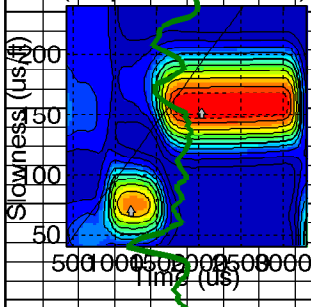


8650



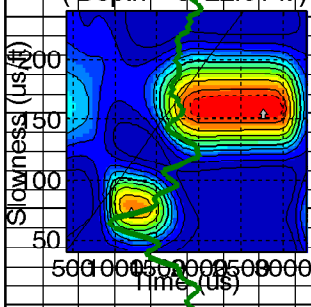
8650

(Depth = 8672.01 ft.)



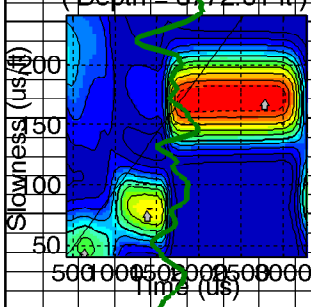
8700

(Depth = 8722.01 ft.)



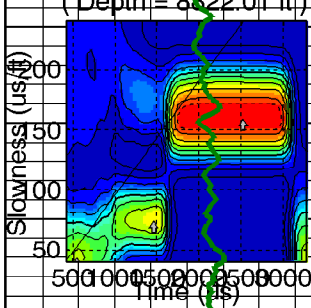
8750

(Depth = 8772.01 ft.)



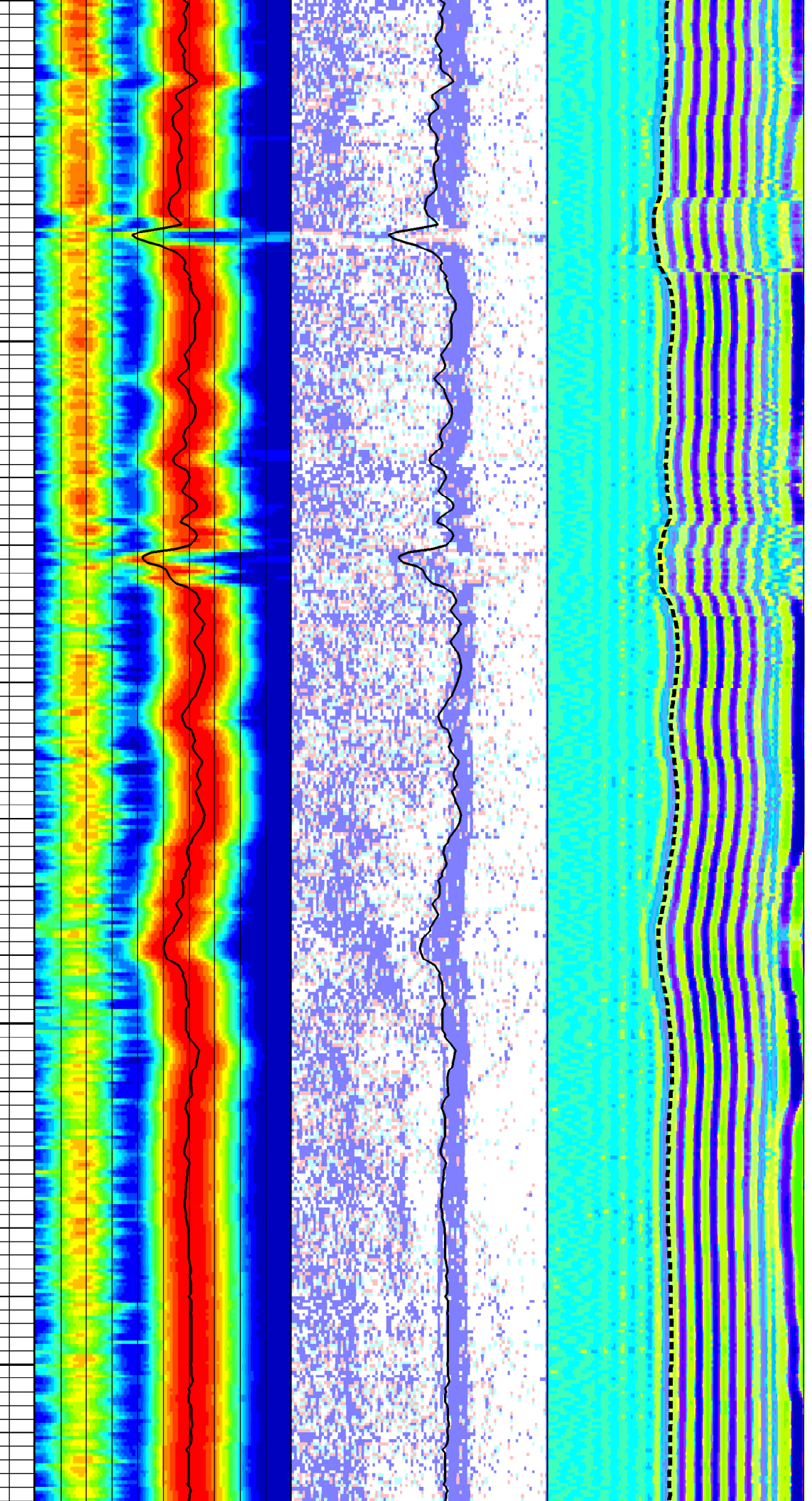
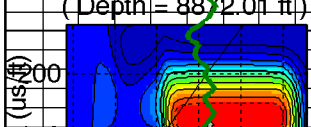
8800

(Depth = 8822.01 ft.)

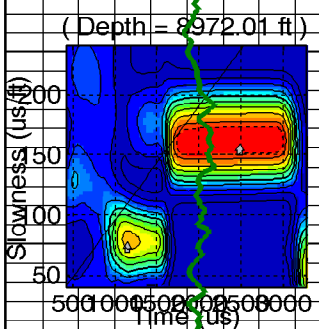
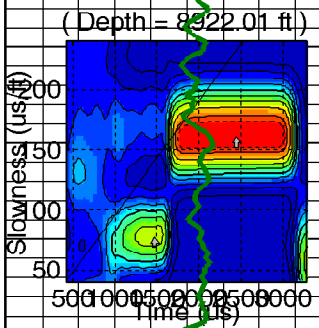
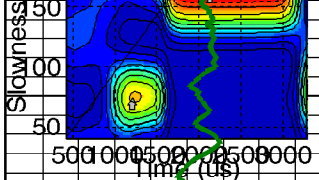


8850

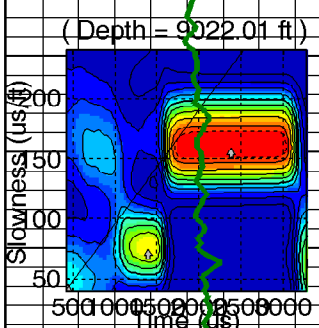
(Depth = 8872.01 ft.)



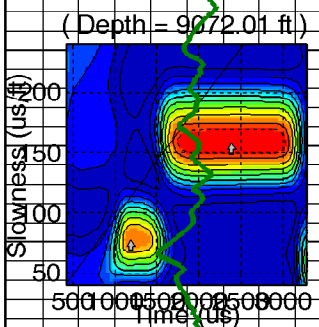
8900



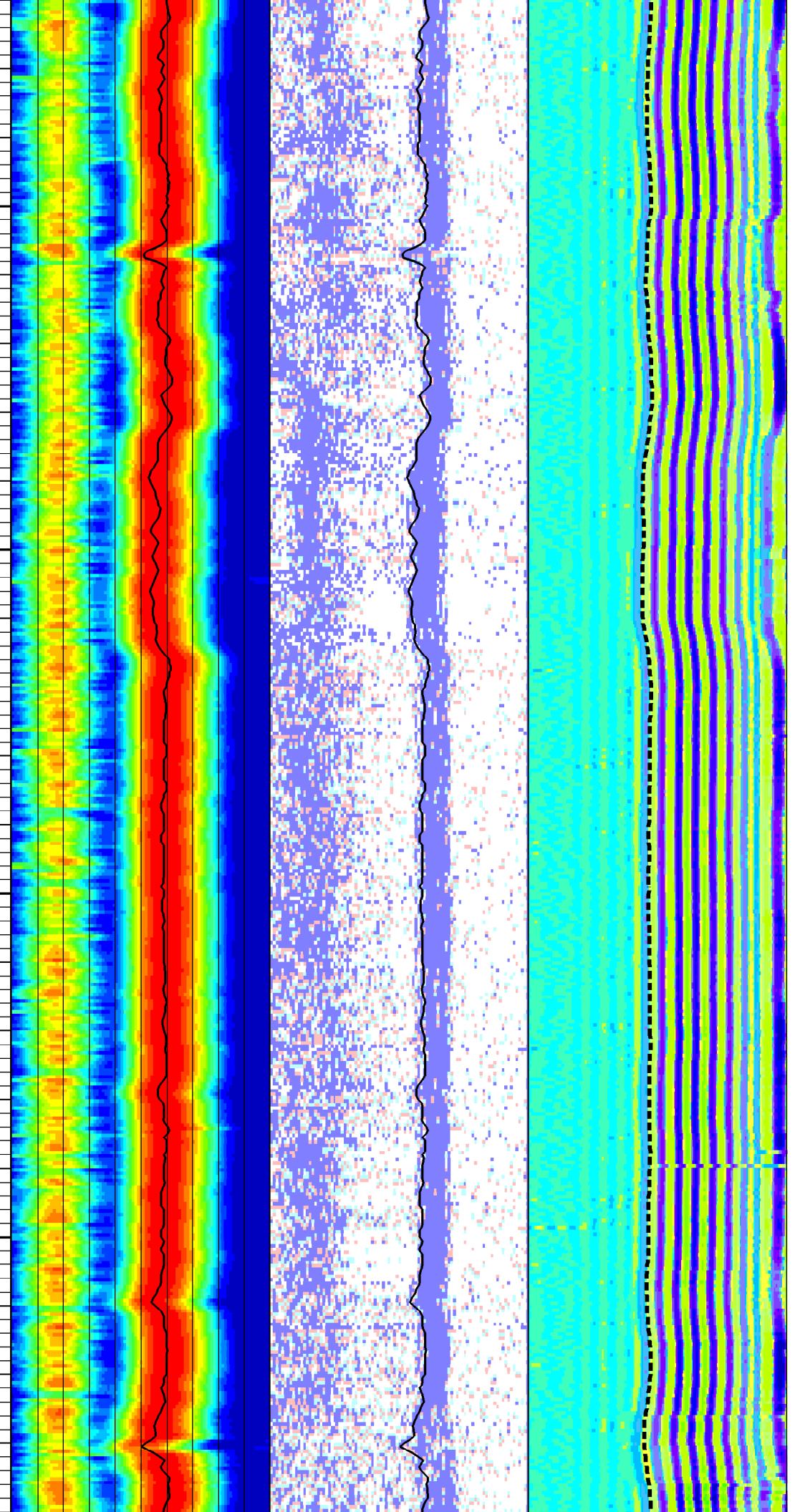
8950



9000

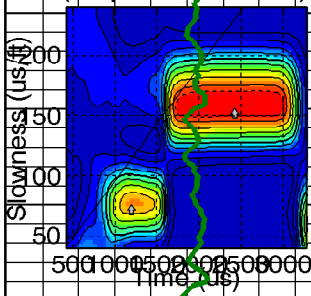


9050



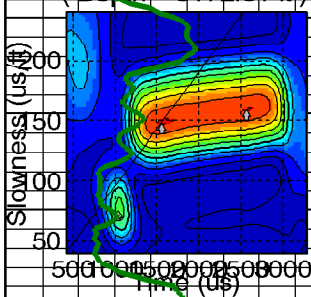
9100

(Depth = 9122.01 ft)



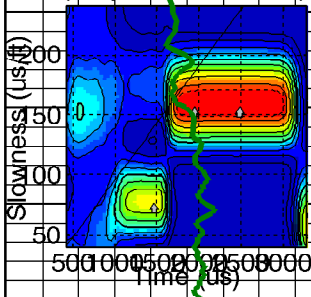
9150

(Depth = 9172.01 ft)



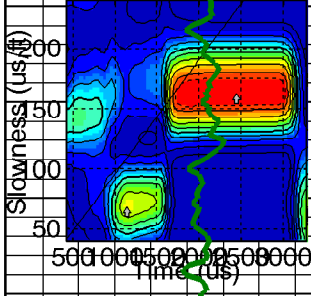
9200

(Depth = 9222.01 ft)



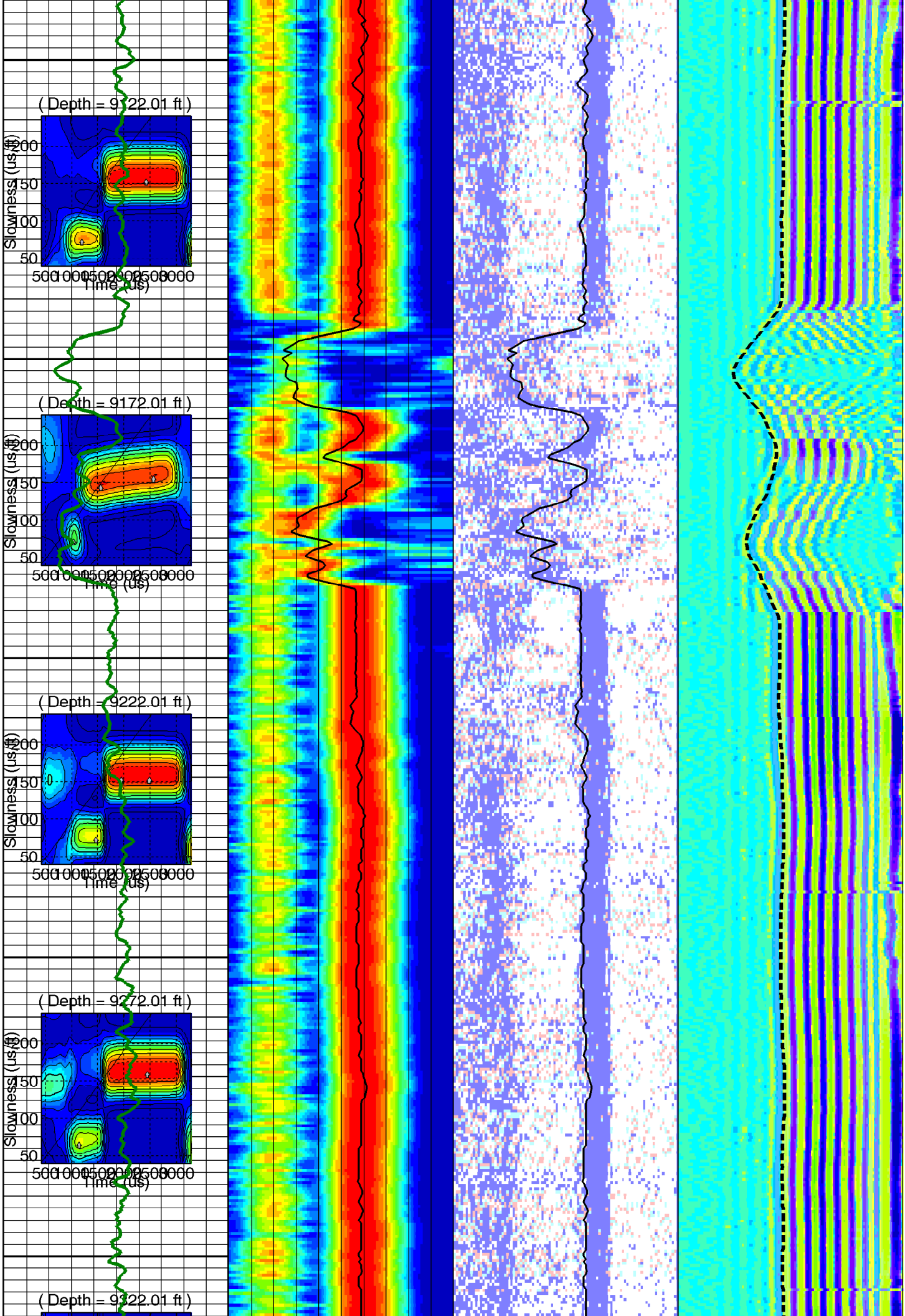
9250

(Depth = 9272.01 ft)

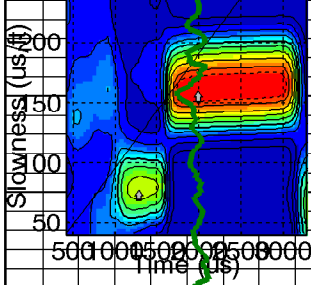


9300

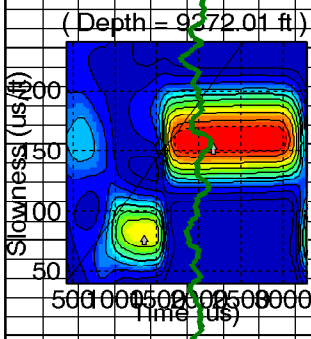
(Depth = 9322.01 ft)



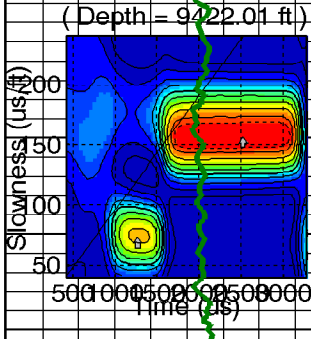
9350



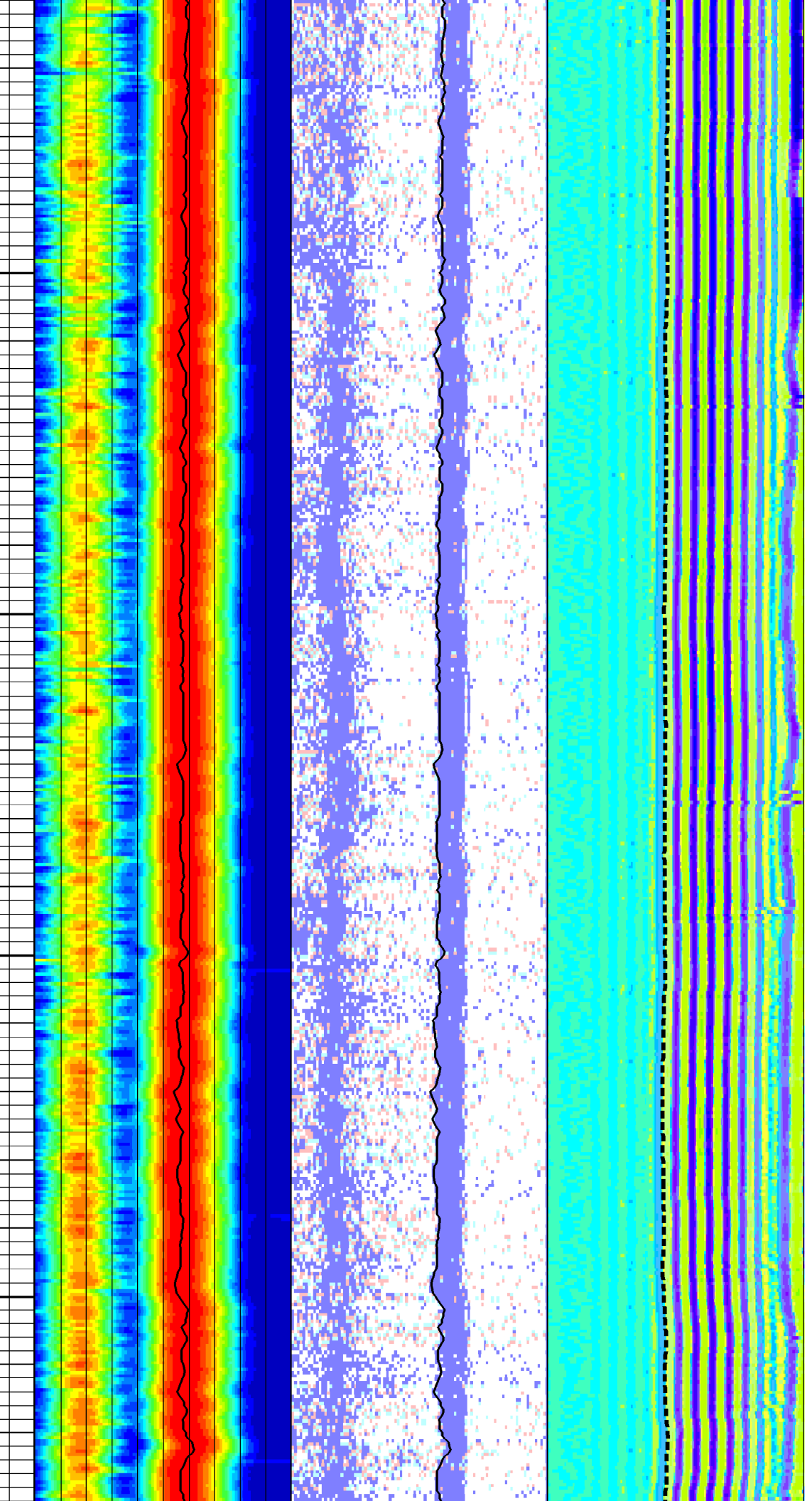
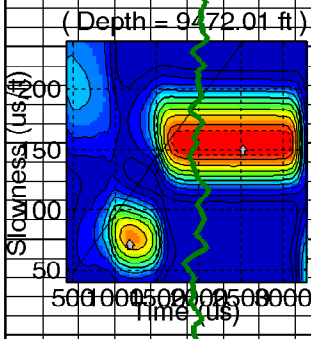
9400

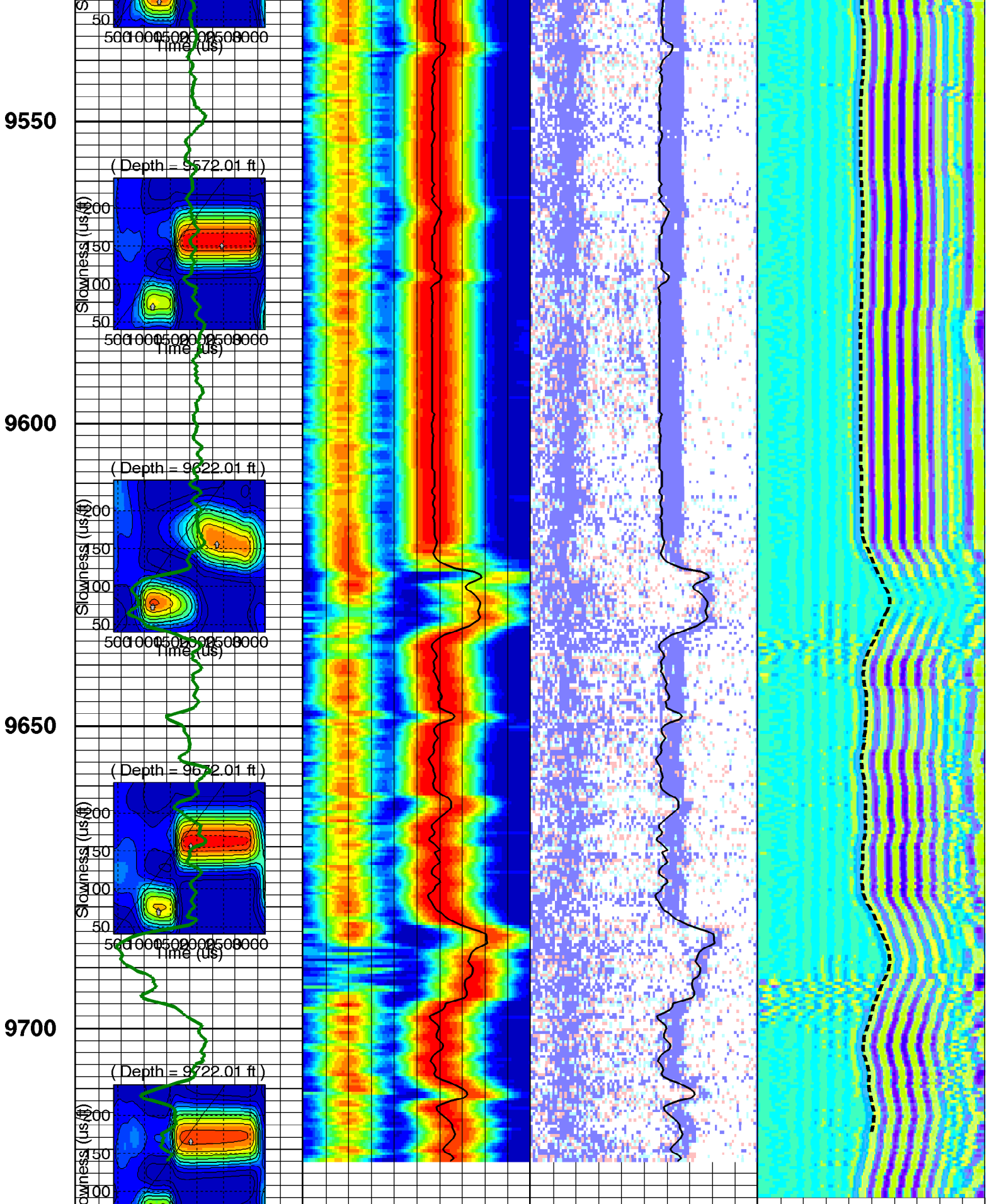


9450



9500





Customized Process: Start Depth (9722.01 ft), Stop Depth (6320.51 ft), Logging Mode (ISONIC - MPS_VSLP)

Noise Cut Filtering(No), Casing Cut Filtering(No)

WF_FLG(1 1 1 1), MUD_TYPE(WBM), DTMUD(205), STCAL(Full Array)

TRSPAC(9.85), RRRSPAC(0 0.666667 1.33333 2)

Hole Diameter (no input)


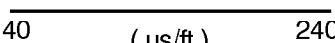
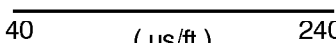
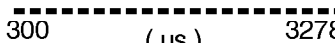


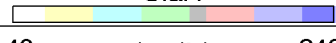

Zoning Guide (no input)

--- Zone Top Depth (0), Zone Name (Zone1) ---

SFTY(Very Slow), BHS(OPEN), CSIZ(7), HDM(Fix*), HD(8.5), DFNM(Vp/Vs Based*), DFVPVS(5*)
TWI(595.703*), SLL(40.4227), SUL(240.409), SST(2.12751), TLL(419.141), TUL(3278.52), TST(39.7135)
SBW(1600*), SBO(550), SWD(20), TWD(900), SEM(0.45), FLENG(49*), FLOW(2500*), FHIGH(4500*)
TKO_MODEL_ORDER(2), TKO_TOL(50) TKO_FLOW(0), TKO_FHIGH(12000)

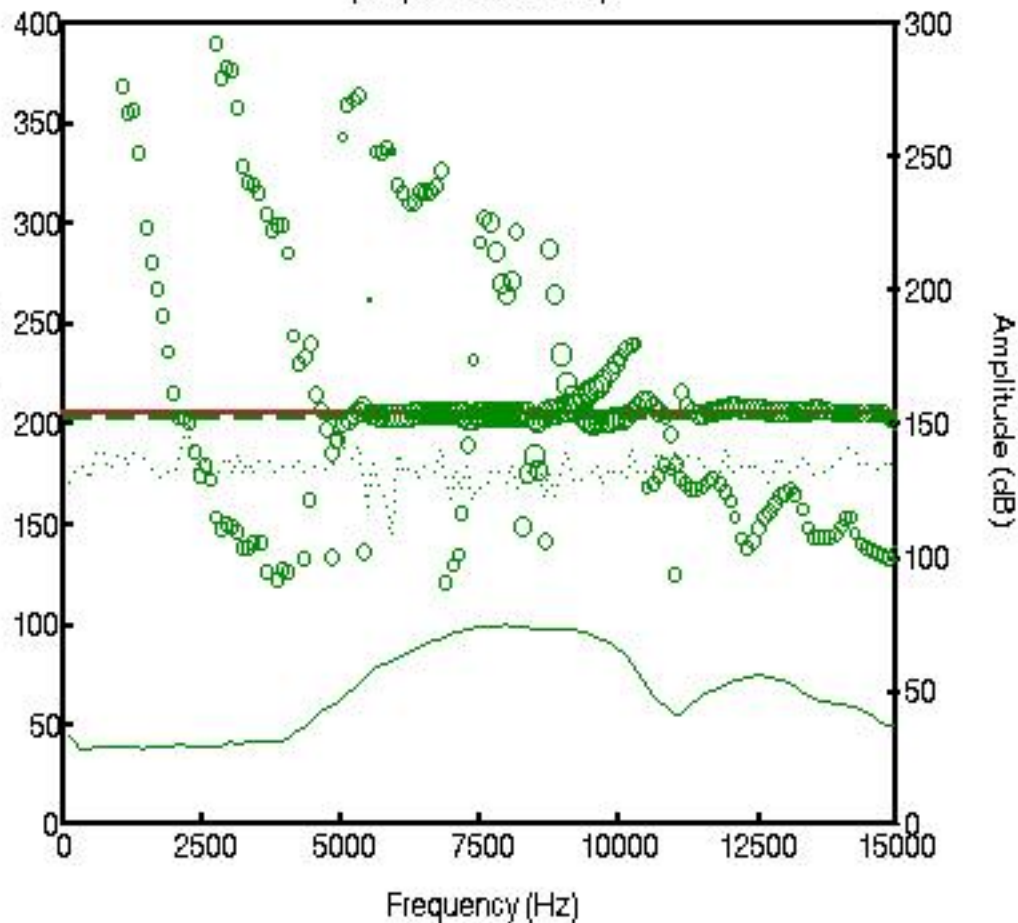
--- Zone Top Depth (7000), Zone Name (1) ---

SFTY(Very Slow), BHS(OPEN), CSIZ(7), HDM(Fix*), HD(8.5), DFNM(Vp/Vs Based*), DFVPVS(4*)
TWI(595.703*), SLL(40.4227), SUL(240.409), SST(2.12751), TLL(419.141), TUL(3278.52), TST(39.7135)
SBW(1600*), SBO(550), SWD(20), TWD(900), SEM(0.45), FLENG(49*), FLOW(2500*), FHIGH(4500*)
TKO_MODEL_ORDER(2), TKO_TOL(50) TKO_FLOW(0), TKO_FHIGH(12000)

| | | | | |
|--|---|--|---|---|
| MD 1 : 240 ft | GRMA_FILT  0 (gAPI) 150 | DTRP  40 (us/ft) 240 | DTRP  40 (us/ft) 240 | TICO  300 (us) 3278 |
| | STPLR4@BestDT-3;2  419.141 (us) 3278.52 | STPrjR  40 (us/ft) 240 | SfaR  40 (us/ft) 240 | WF VDL  300 (us) 3278 |

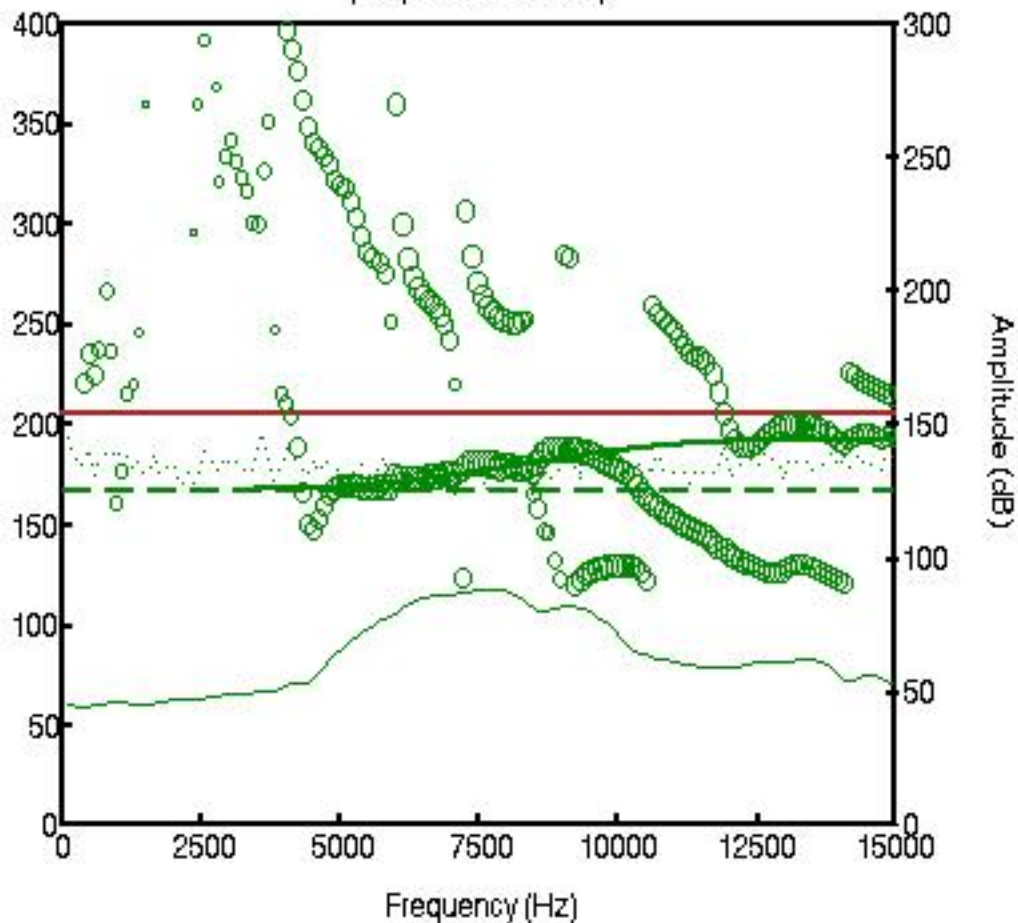
Slowness Dispersion Plot

(Depth= 6500.01 ft)



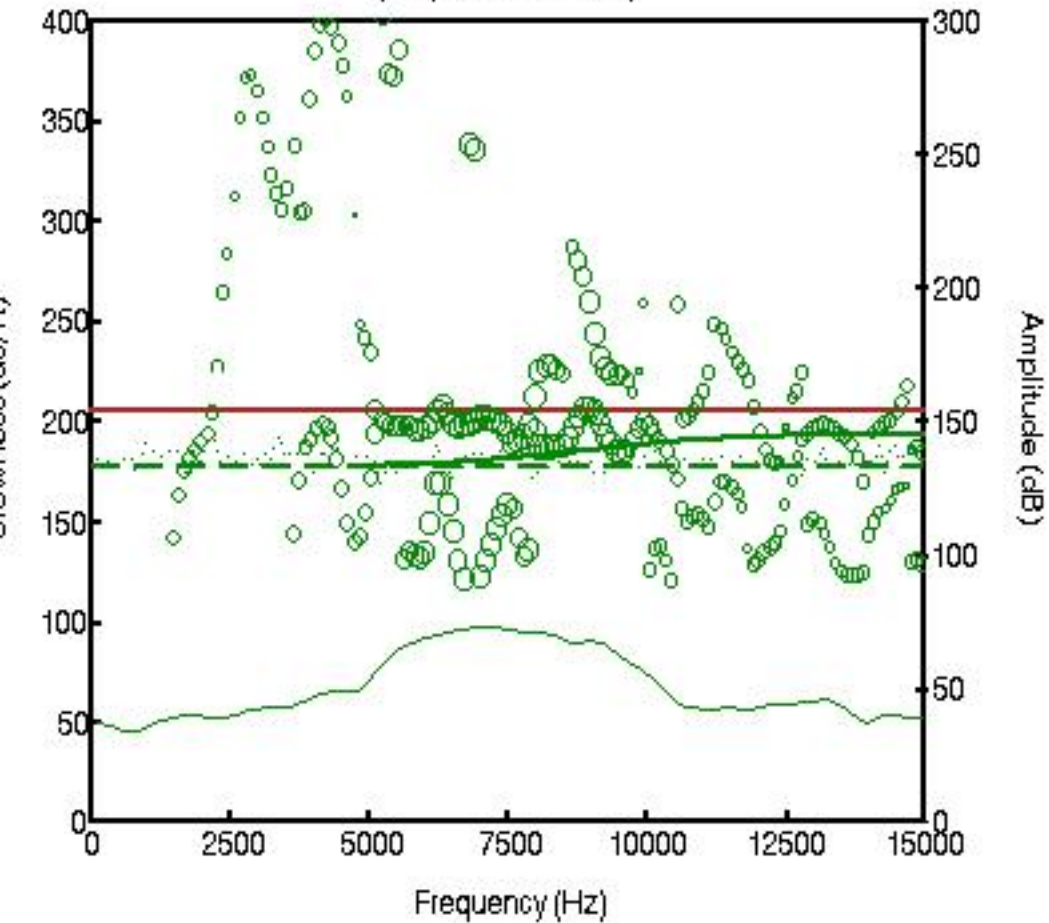
Slowness Dispersion Plot

(Depth = 7500.01 ft)



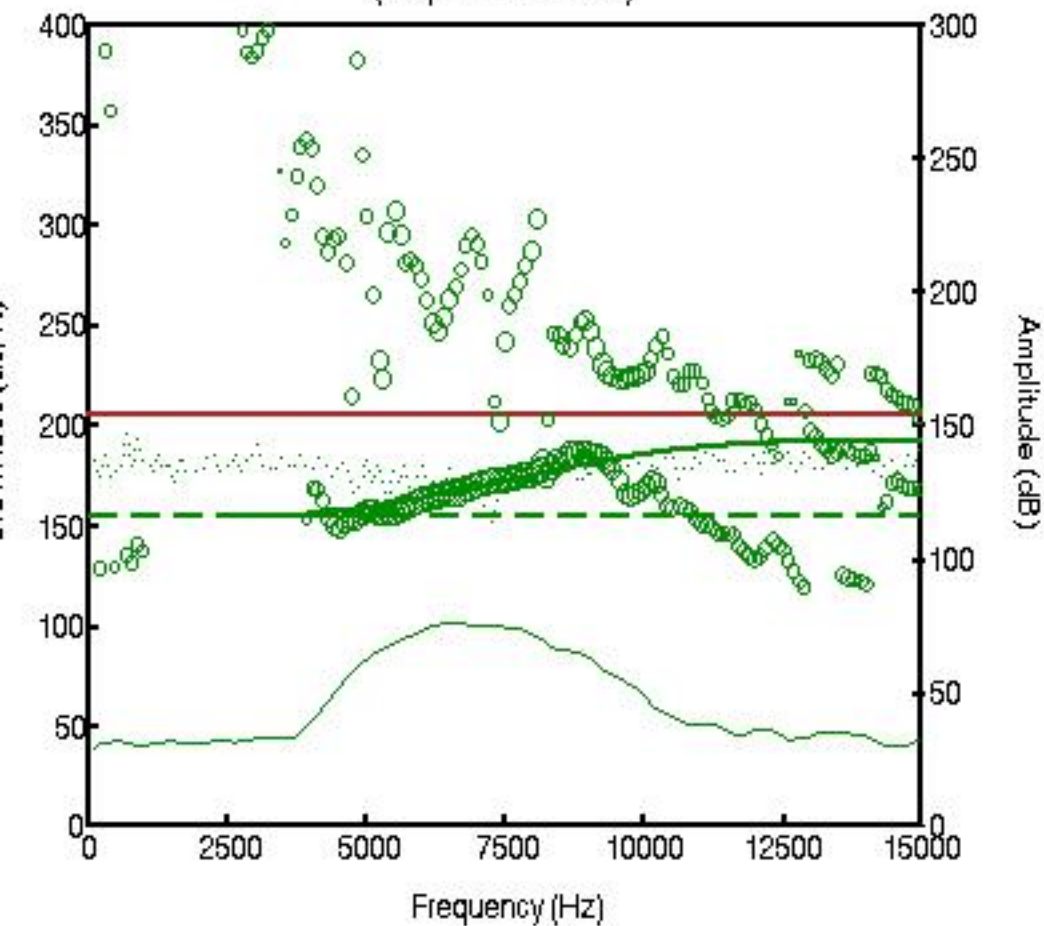
Slowness Dispersion Plot

(Depth = 8000.01 ft)



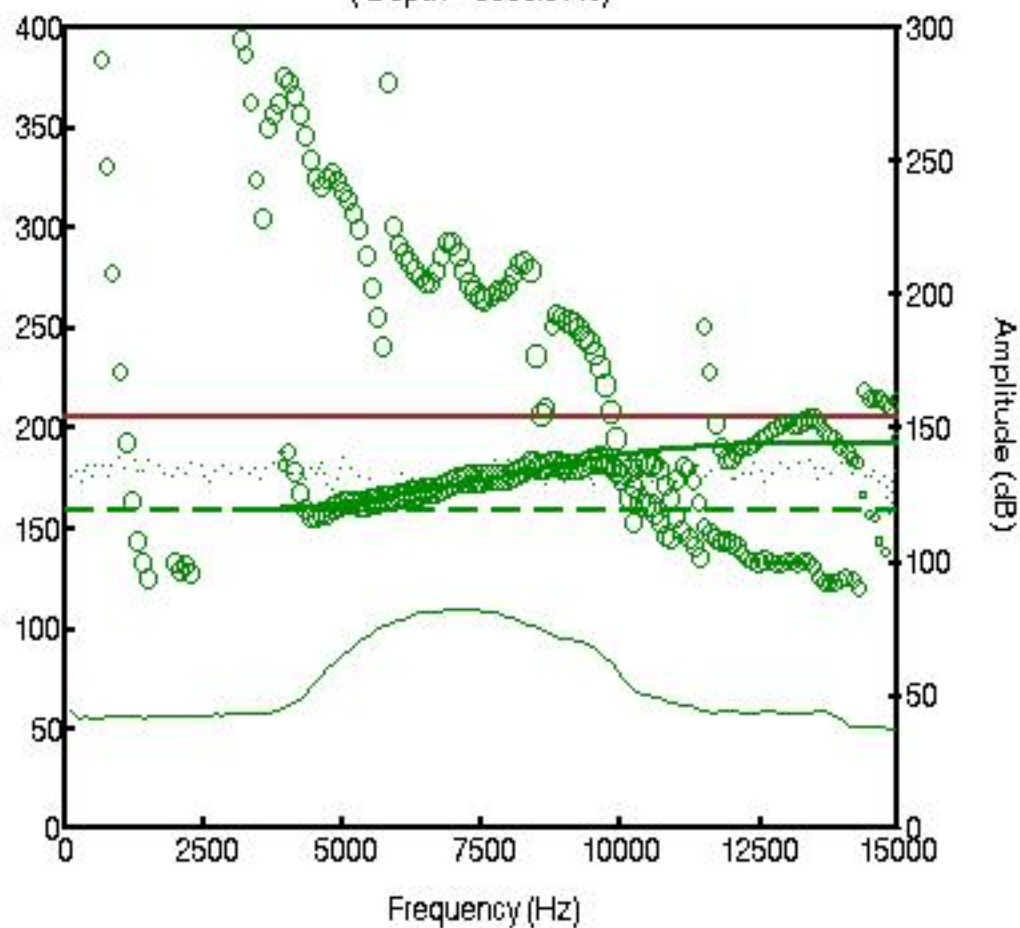
Slowness Dispersion Plot

(Depth = 8500.01 ft)



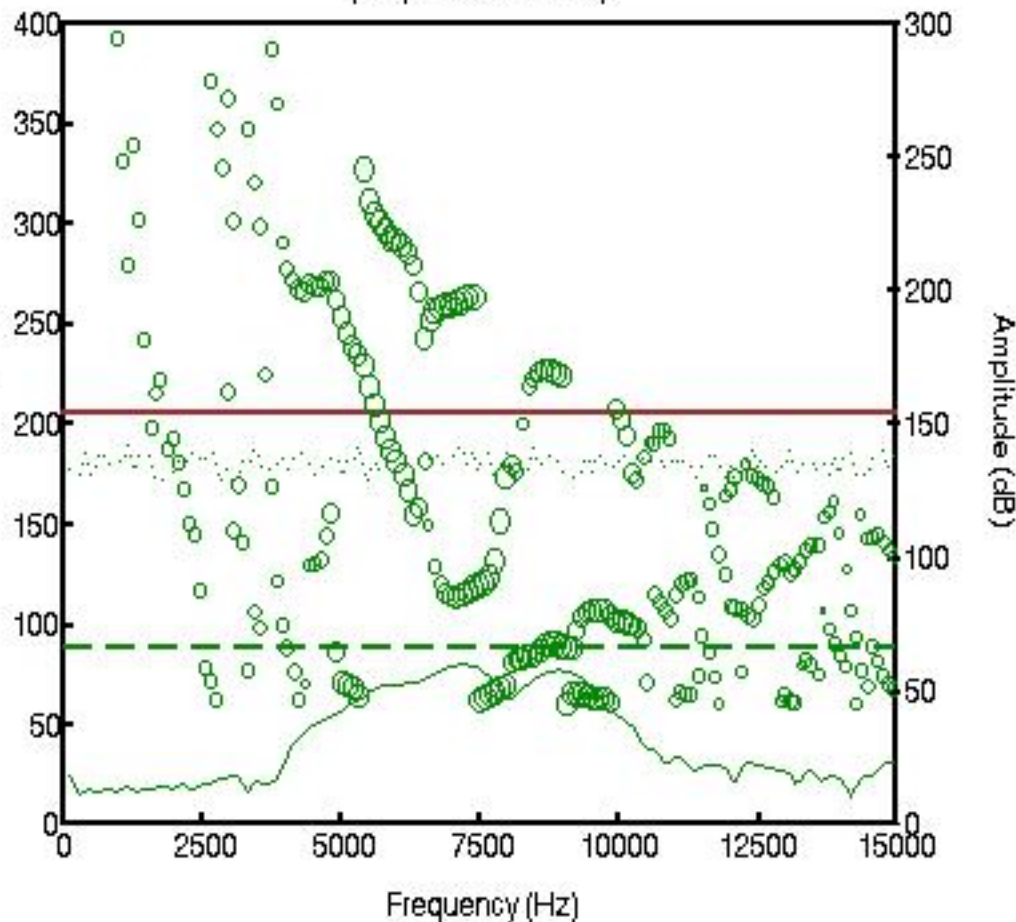
Slowness Dispersion Plot

(Depth = 9000.01 ft)



Slowness Dispersion Plot

(Depth= 9150.01 ft)



Slowness Dispersion Plot

(Depth = 9500.01 ft)

