

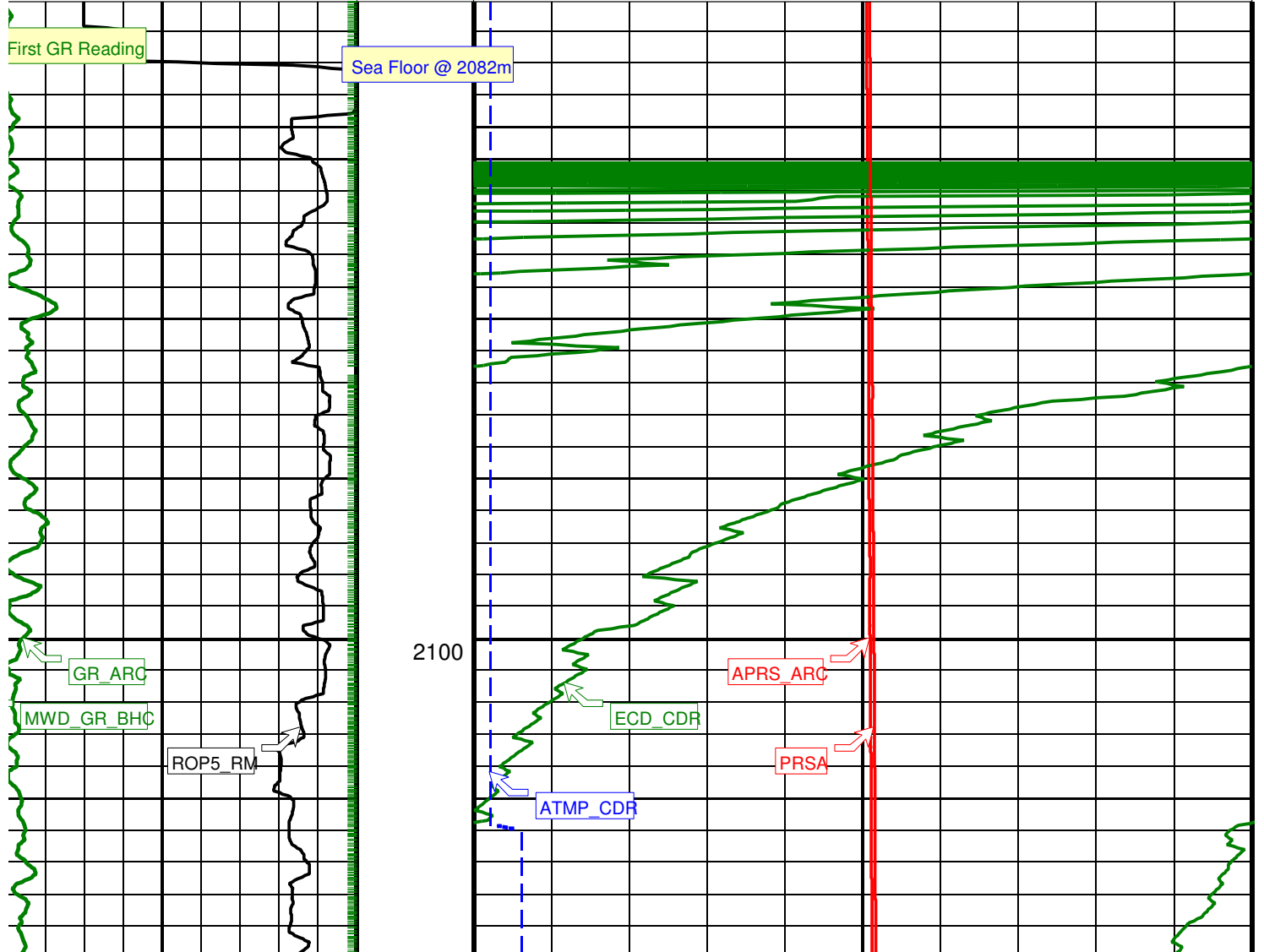
Parameters

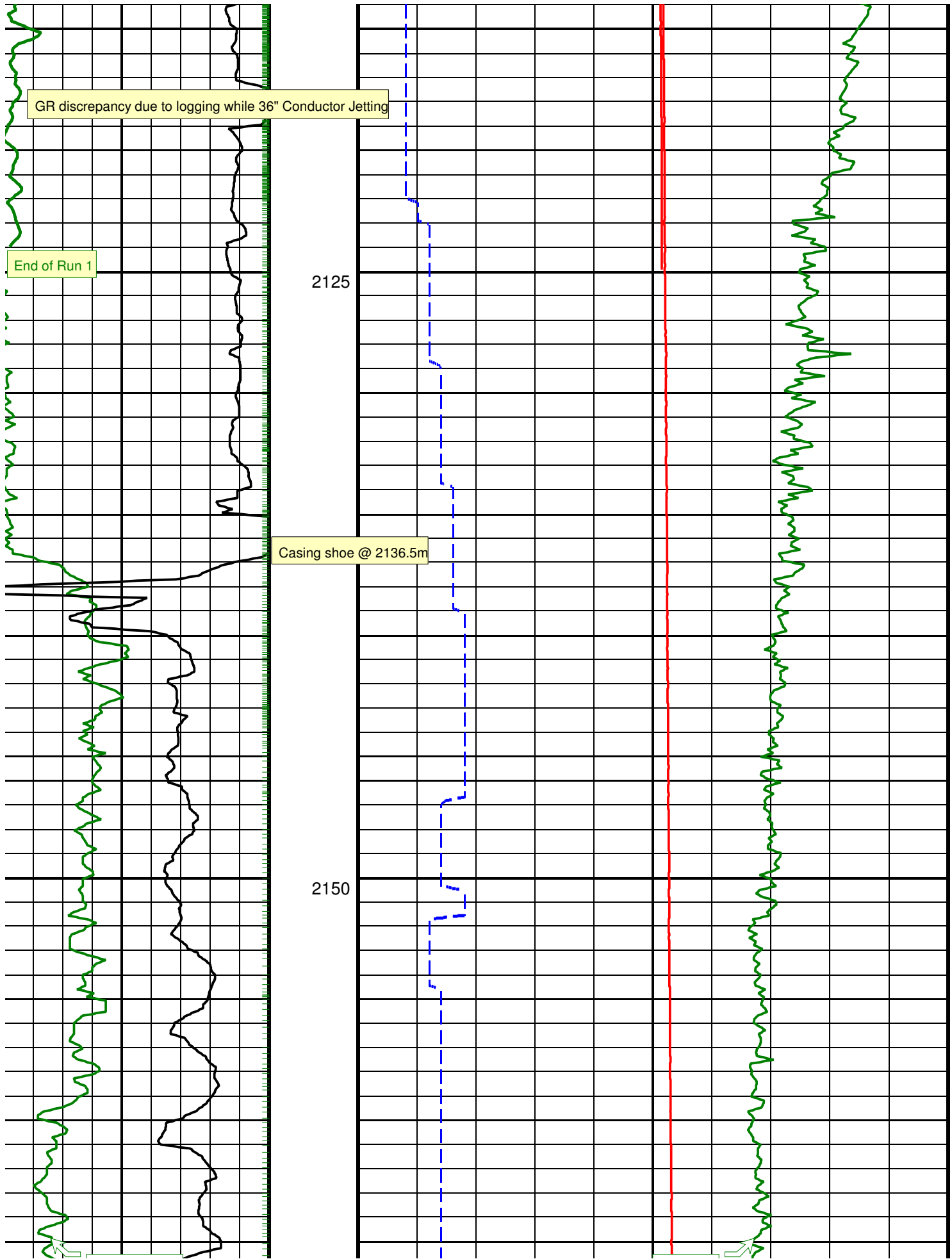
| DLIS Name | Description | Value |
|-----------|------------------------------|-------|
| DO | Depth Offset | 0.0 m |
| DORL | Depth Offset Repeat Analysis | 0.0 m |

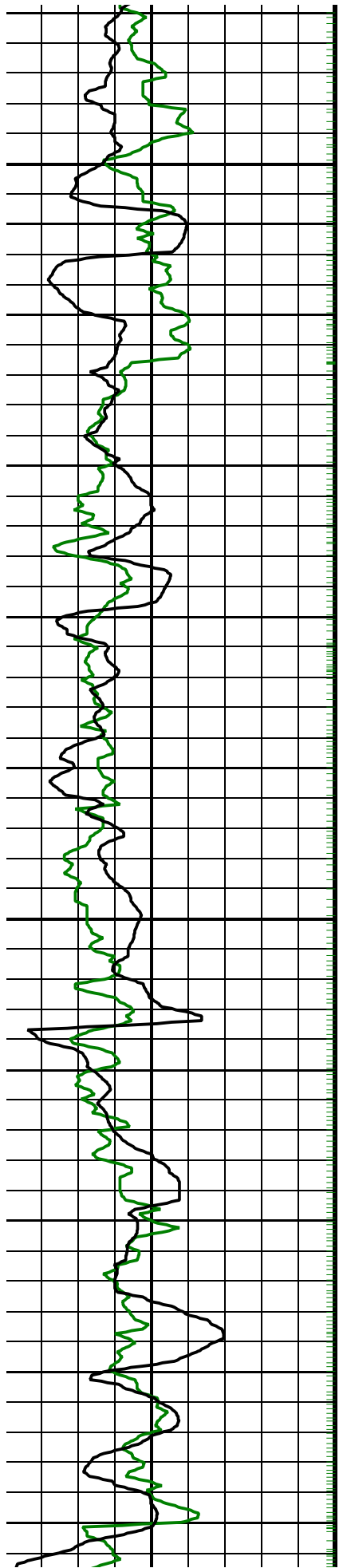
PIP SUMMARY

- + ARC Gamma Ray Samples
- + Gamma-Ray Samples

| | | | |
|--|-----|---|-----------|
| Rate of Penetration, Averaged over Last 5ft (ROP5_RM) (M/HR) | 0 | Annular Temperature (ATMP_CDR) (DEGC) | 0 to 50 |
| Borehole Corrected Gamma Ray (MWD_GR_BHC) (GAPI) | 200 | Annular Pressure (PRSA) (PSI) | 0 to 6000 |
| ARC Gamma Ray (GR_ARC) (GAPI) | 200 | Equivalent Circulating Density (ECD_CDR) (SG) | 0 to 2 |
| | | Annulus Pressure (APRS_ARC) (PSI) | 0 to 6000 |

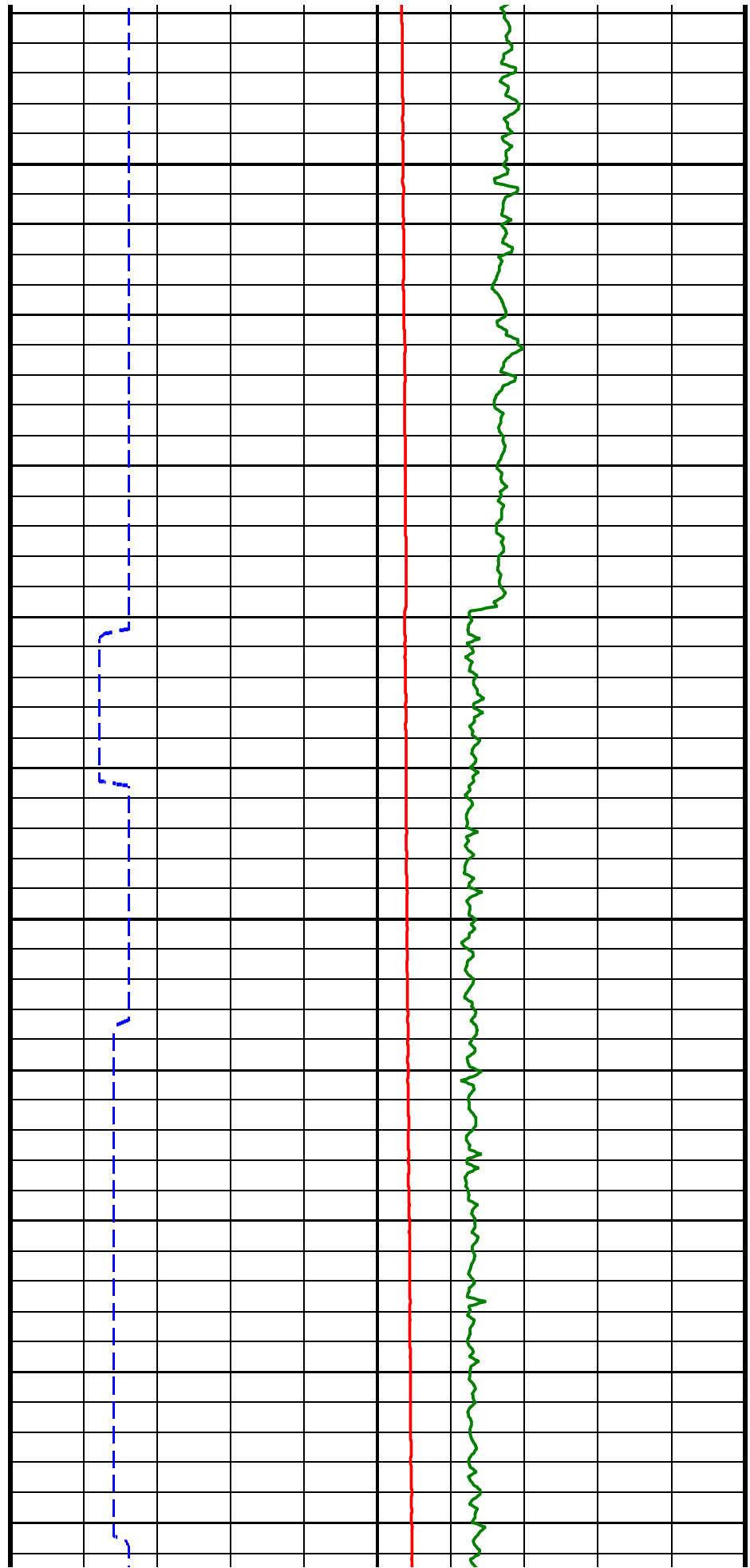


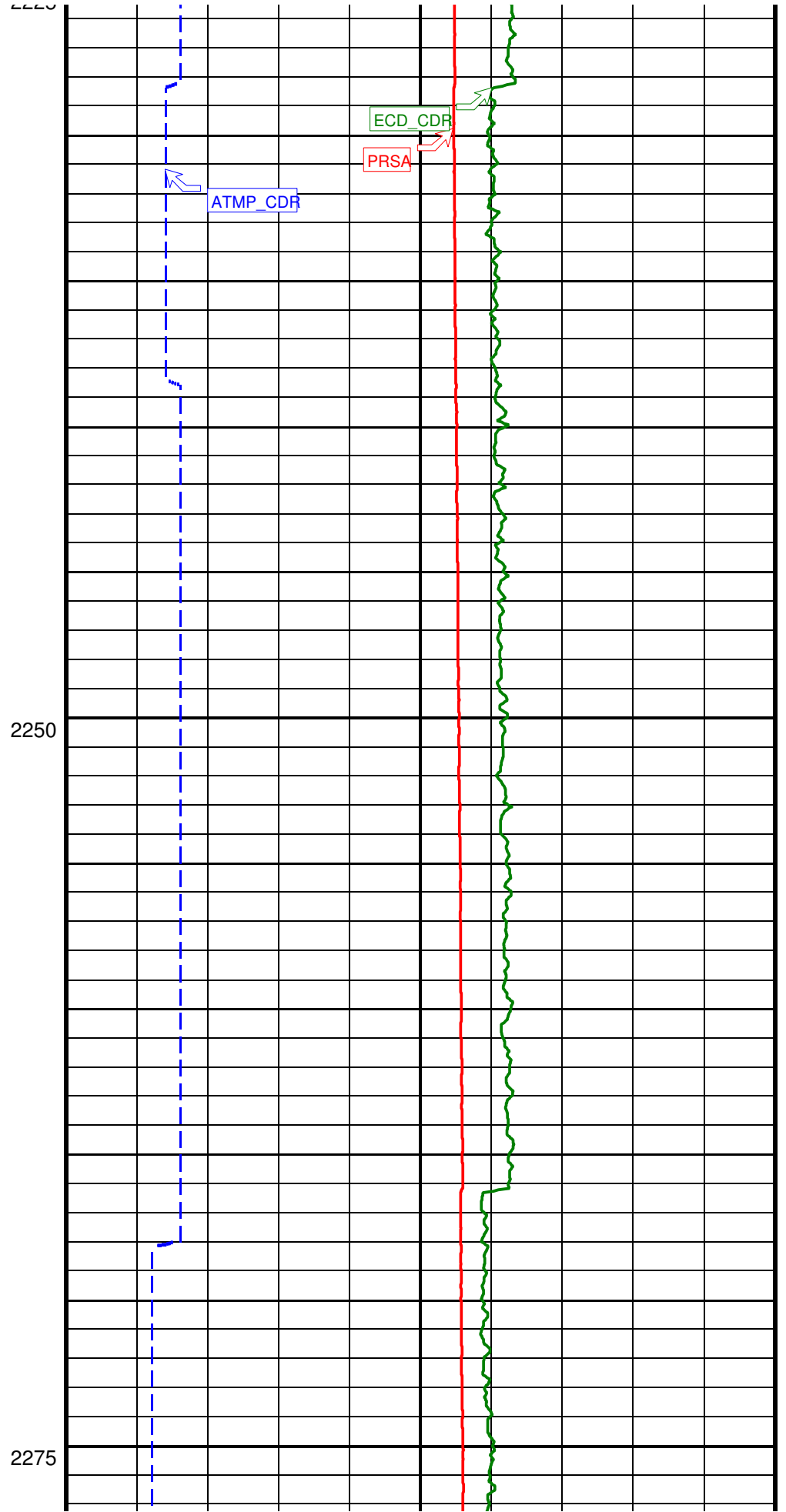
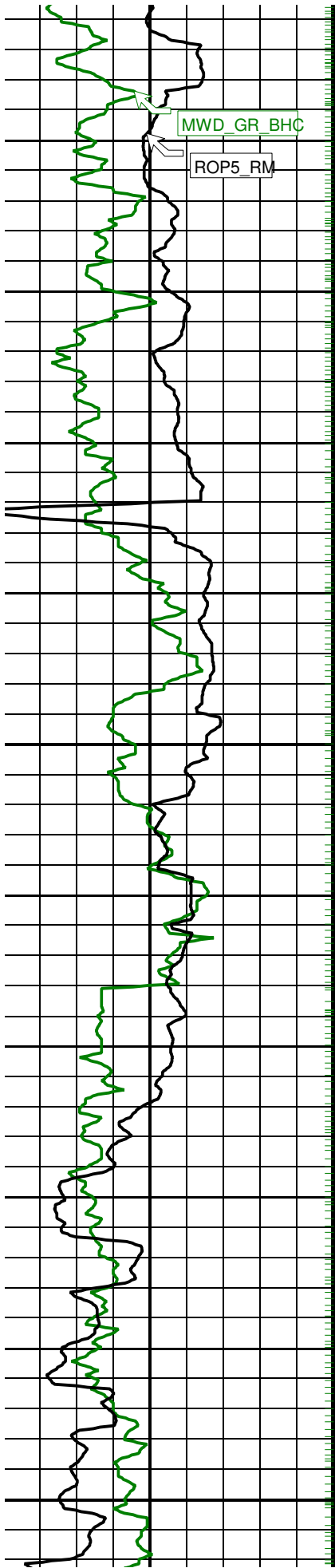


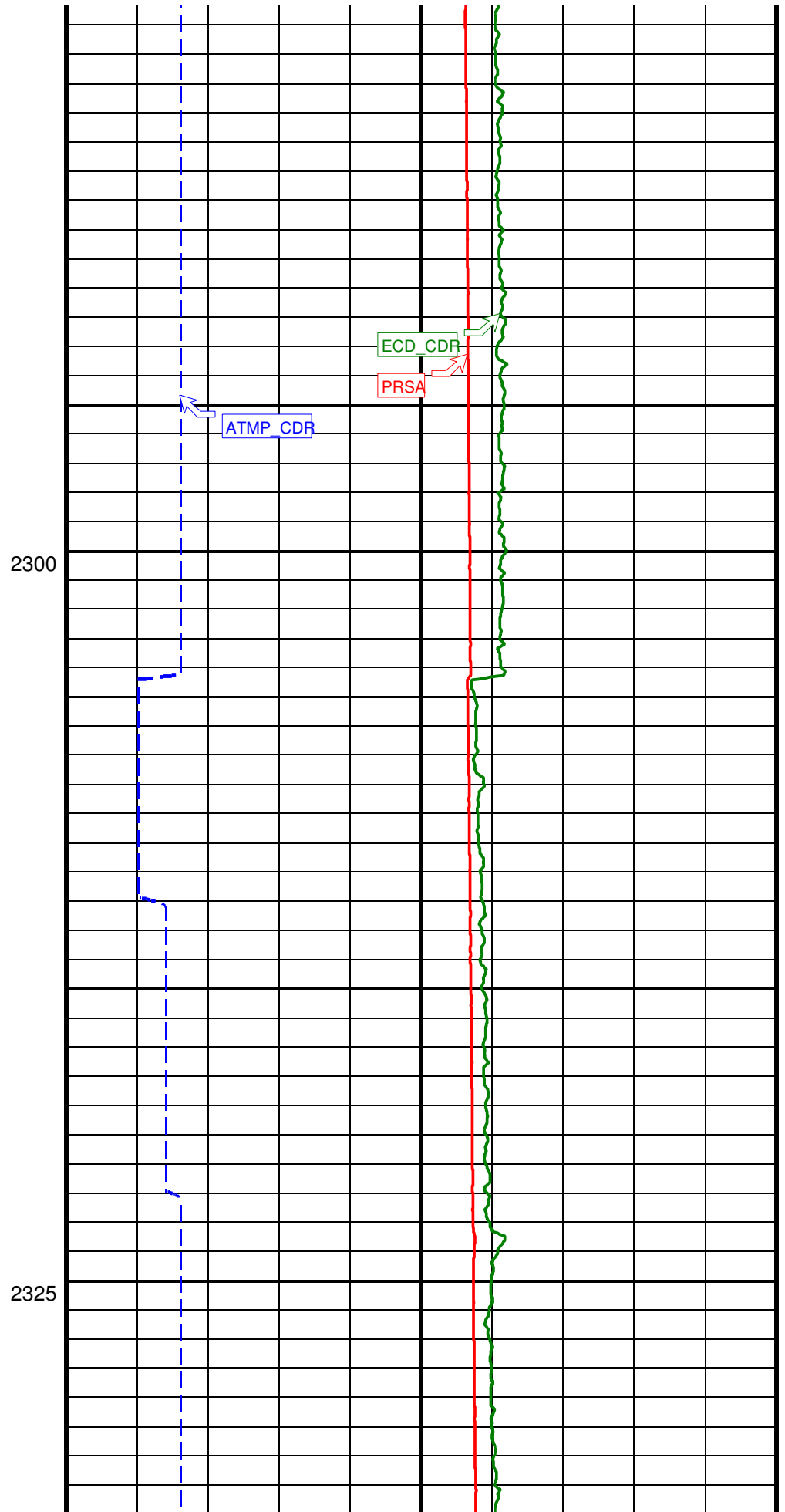
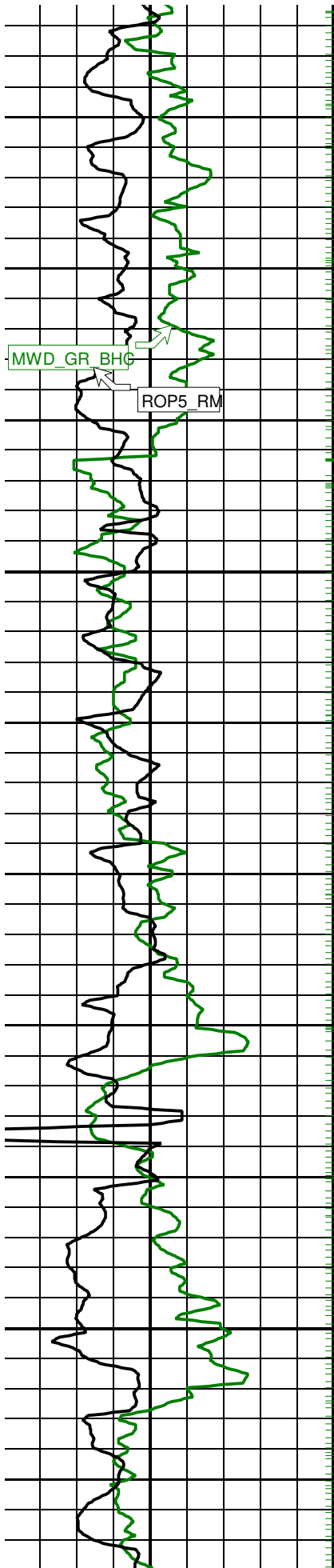


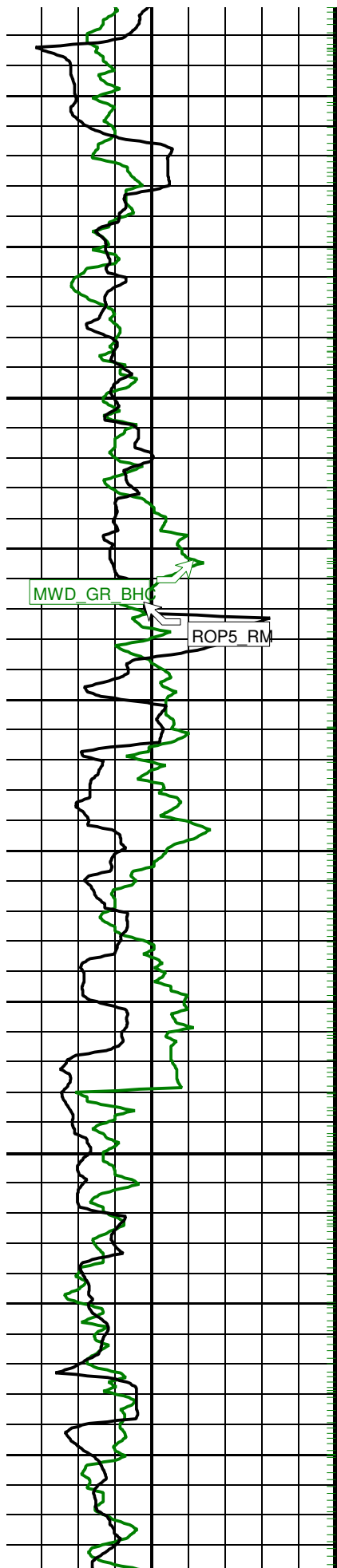
2175

2200



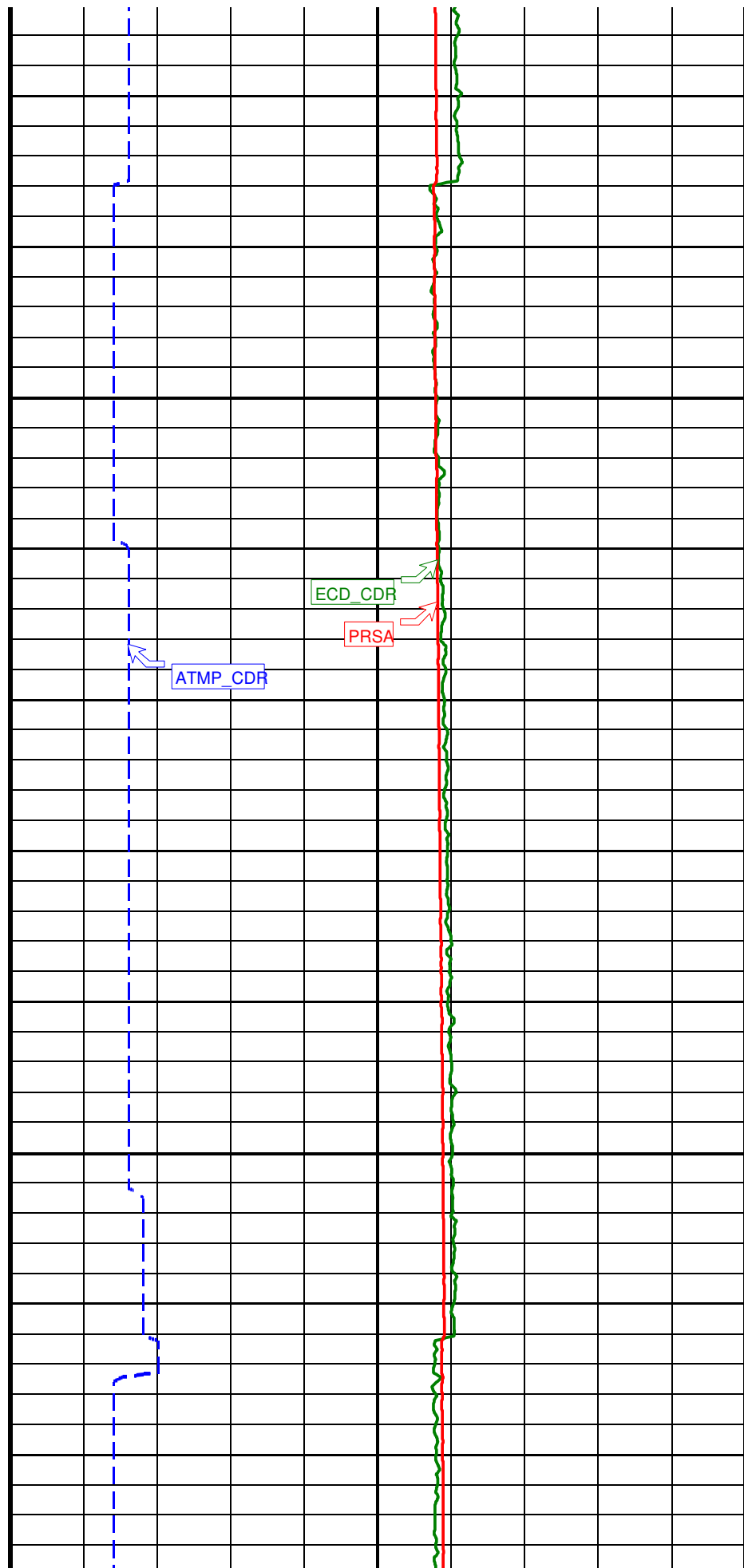


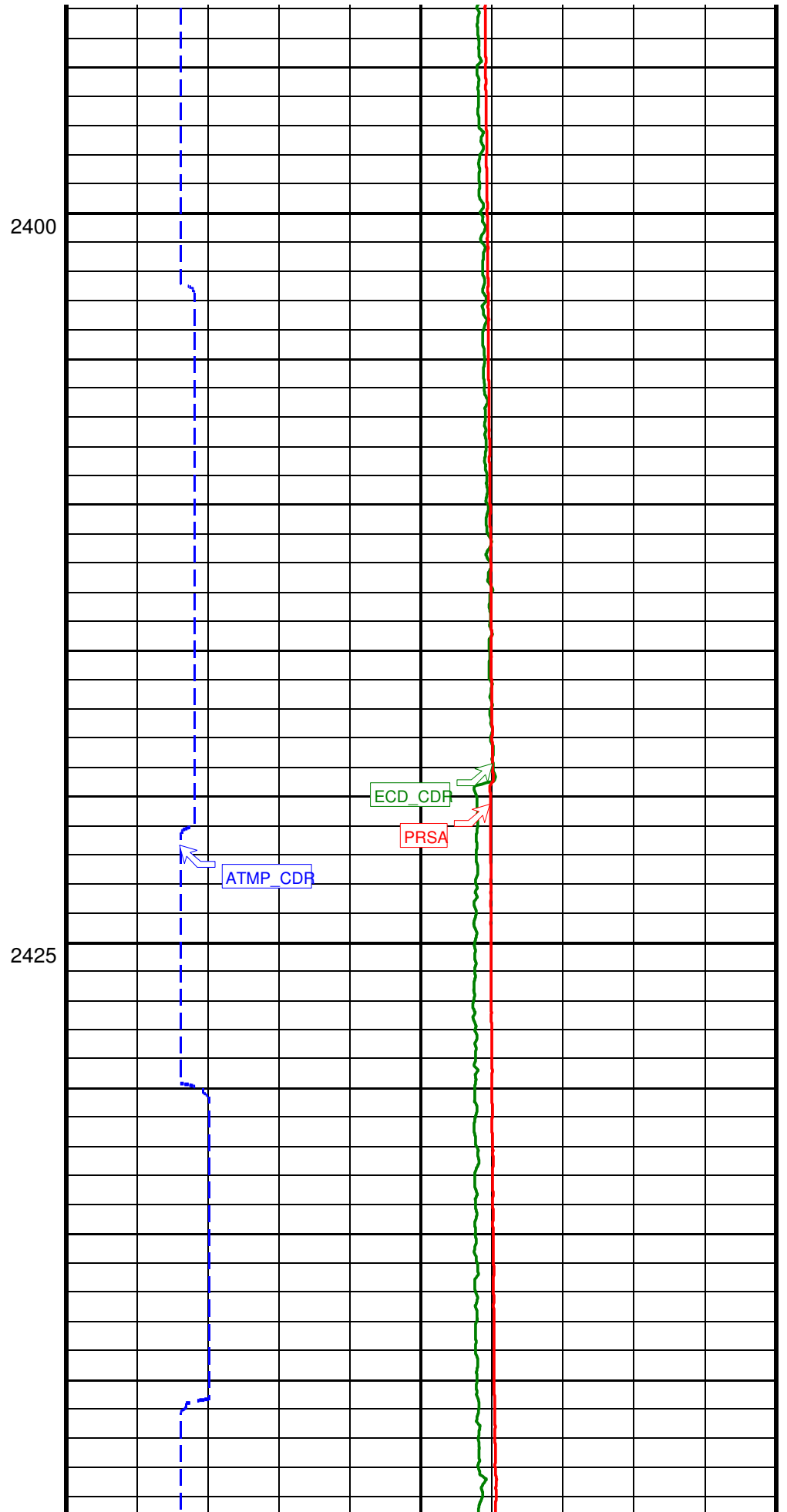
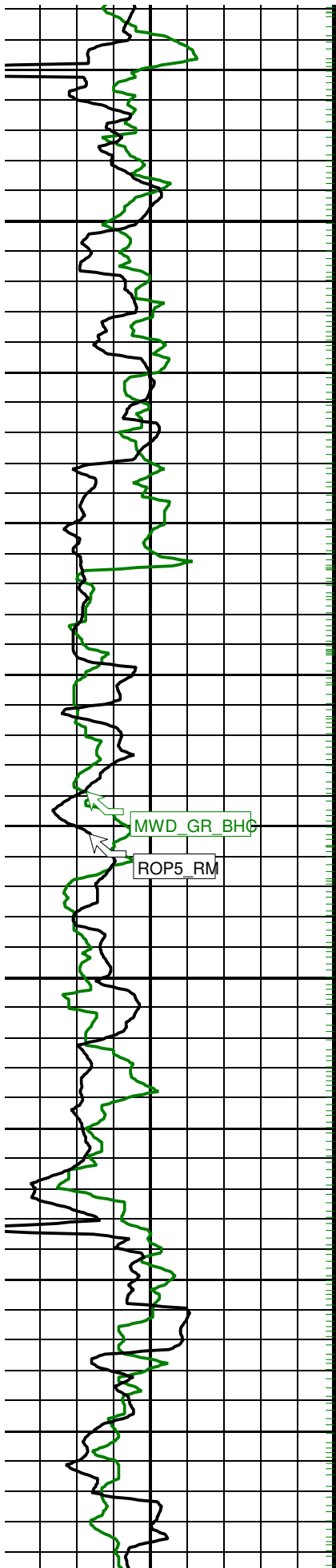


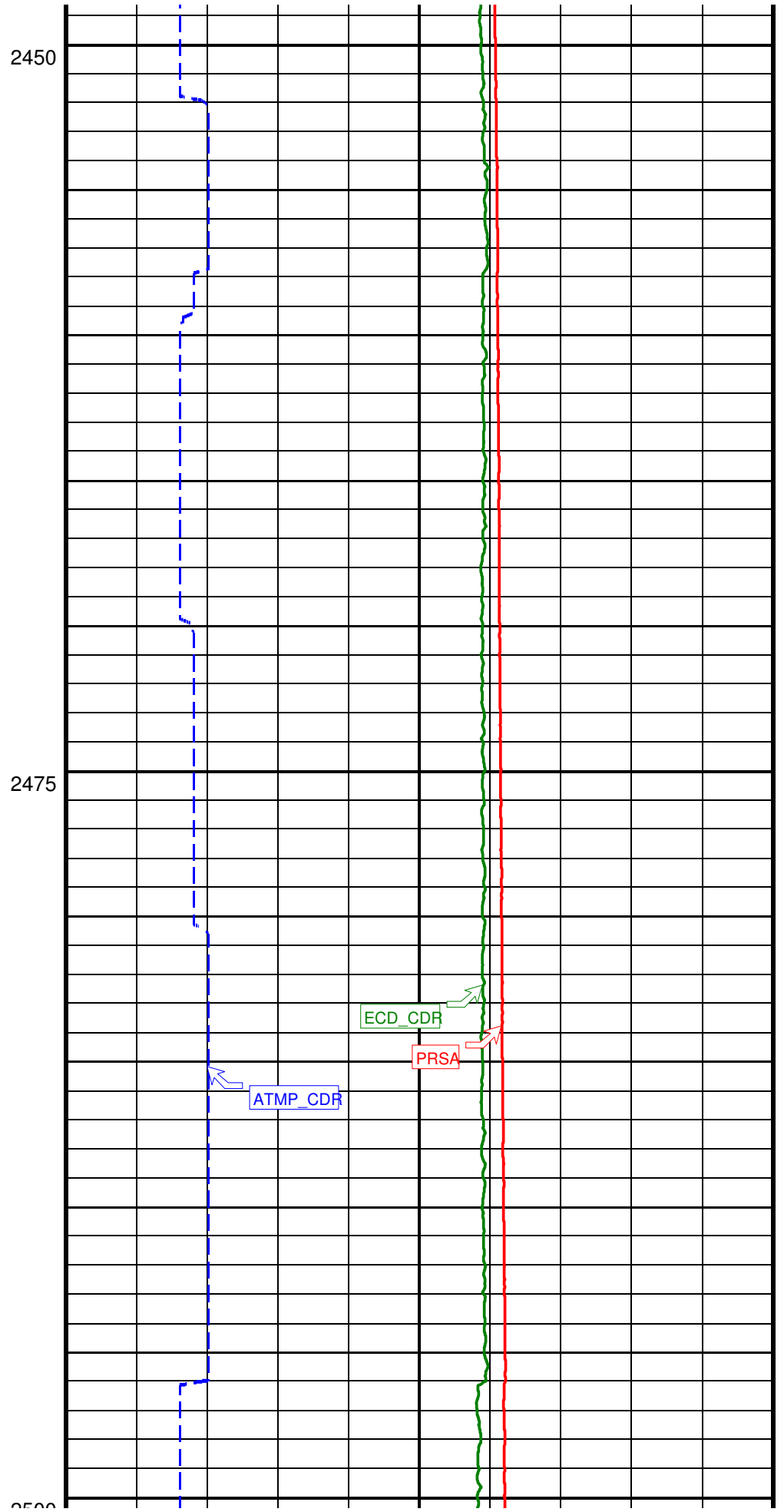
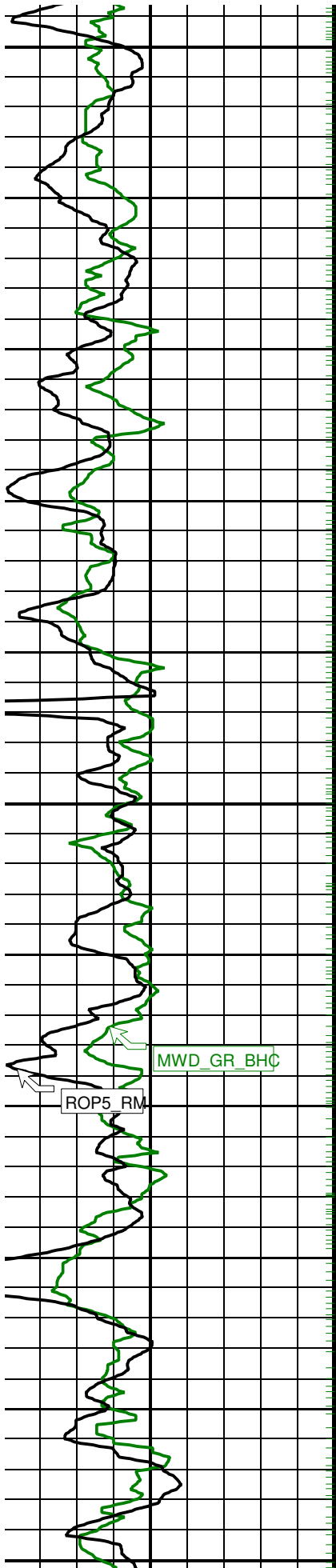


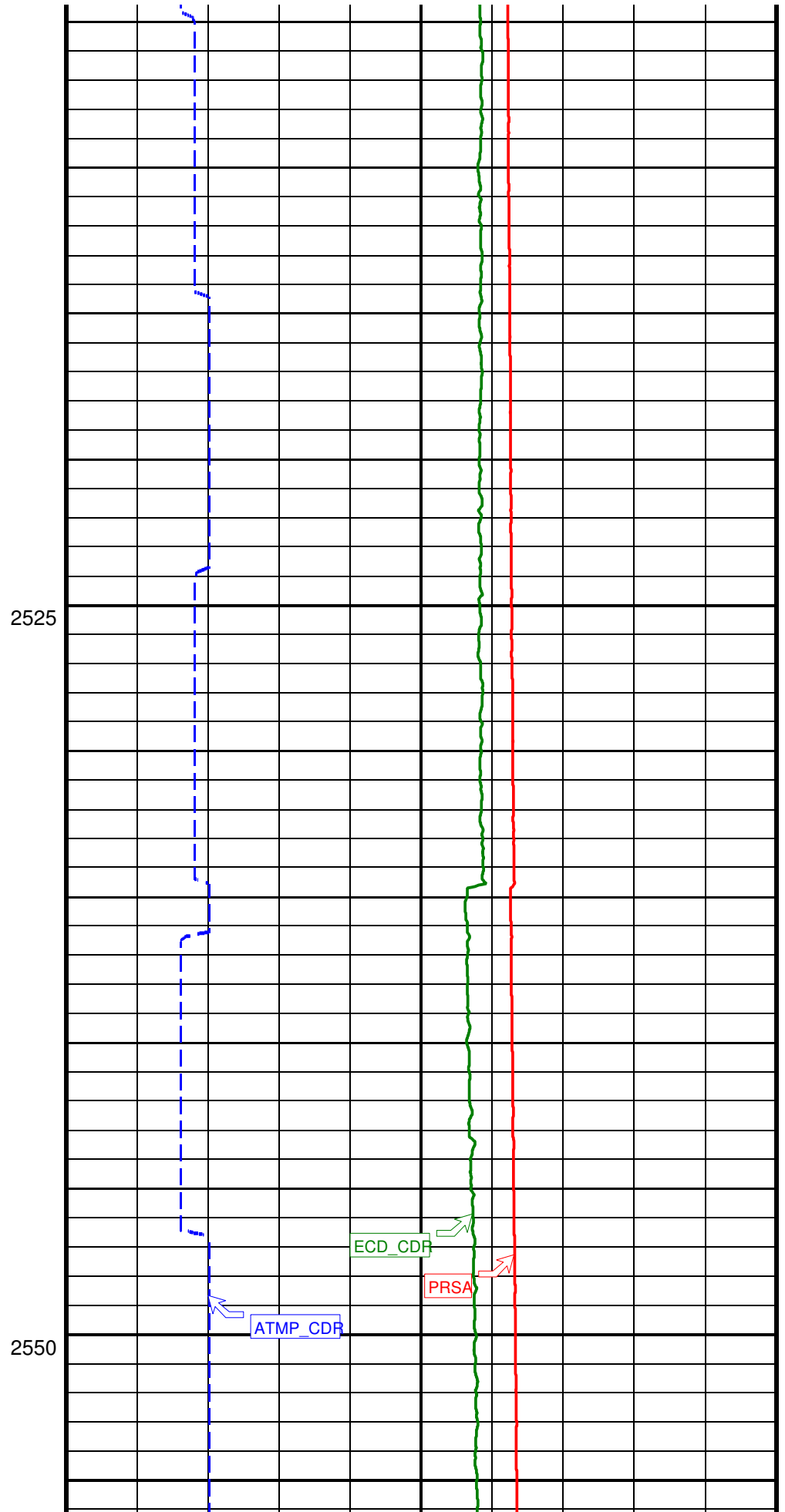
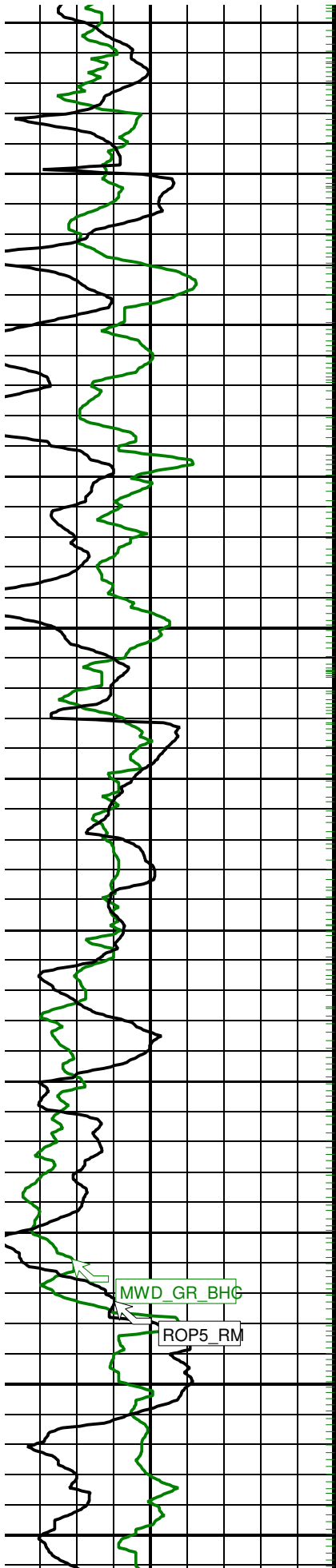
2350

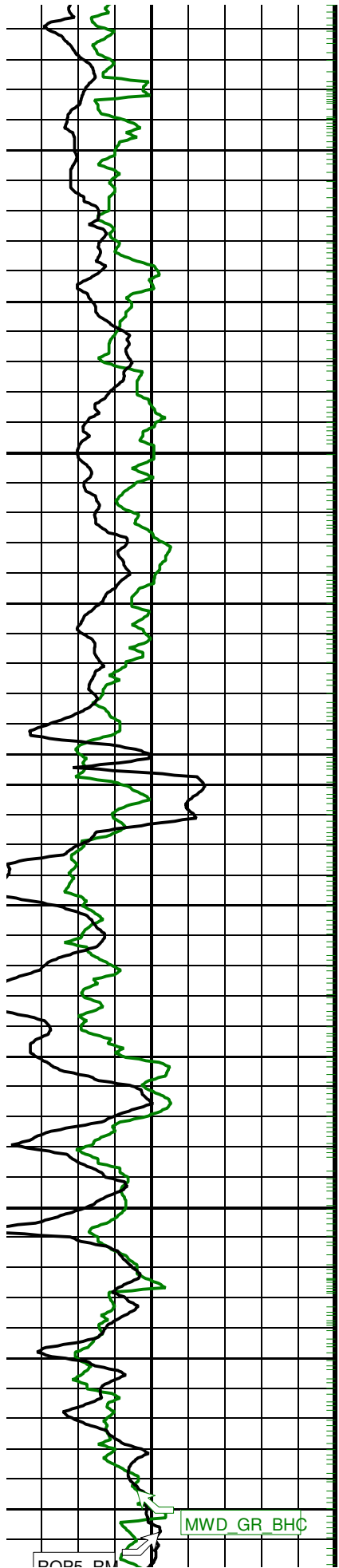
2375





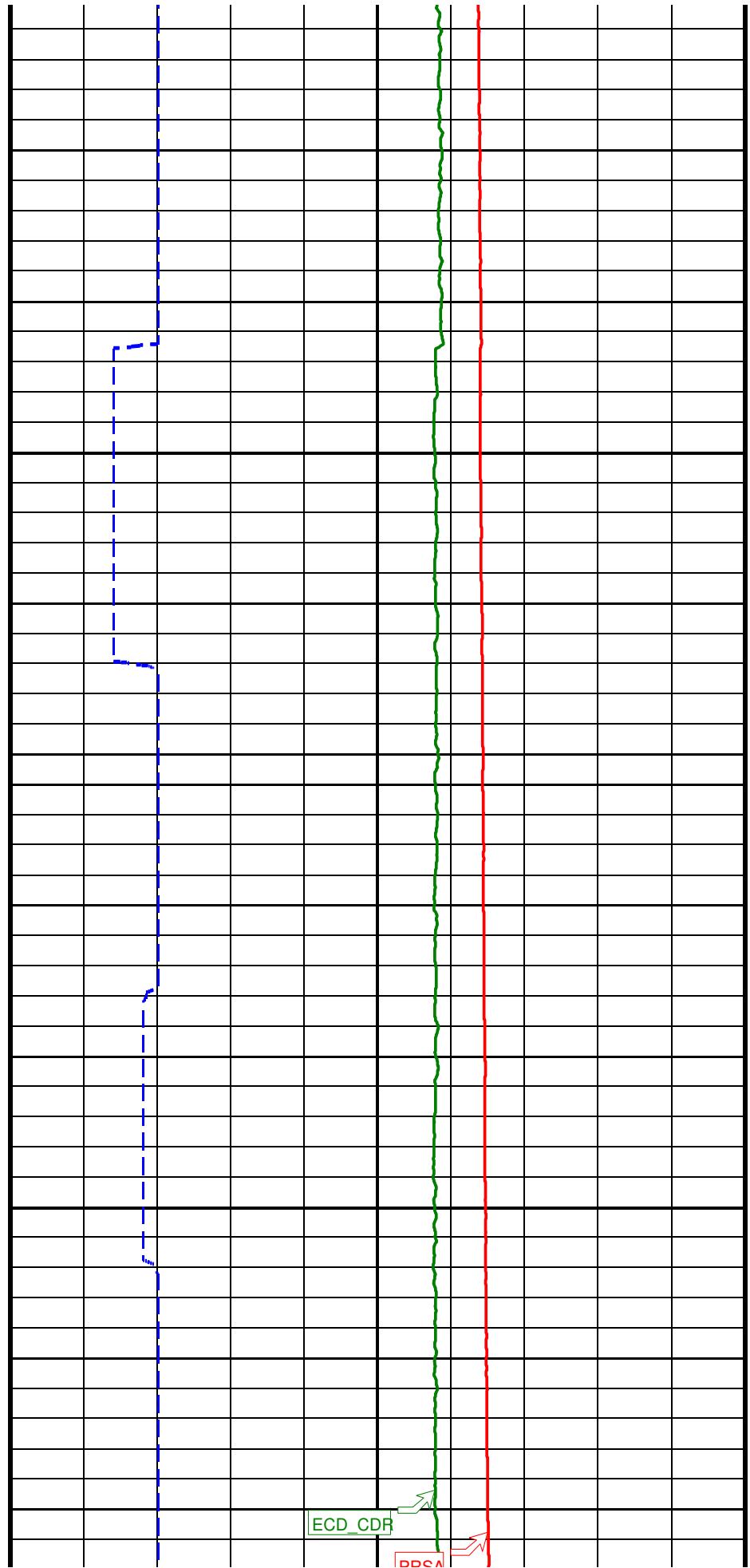


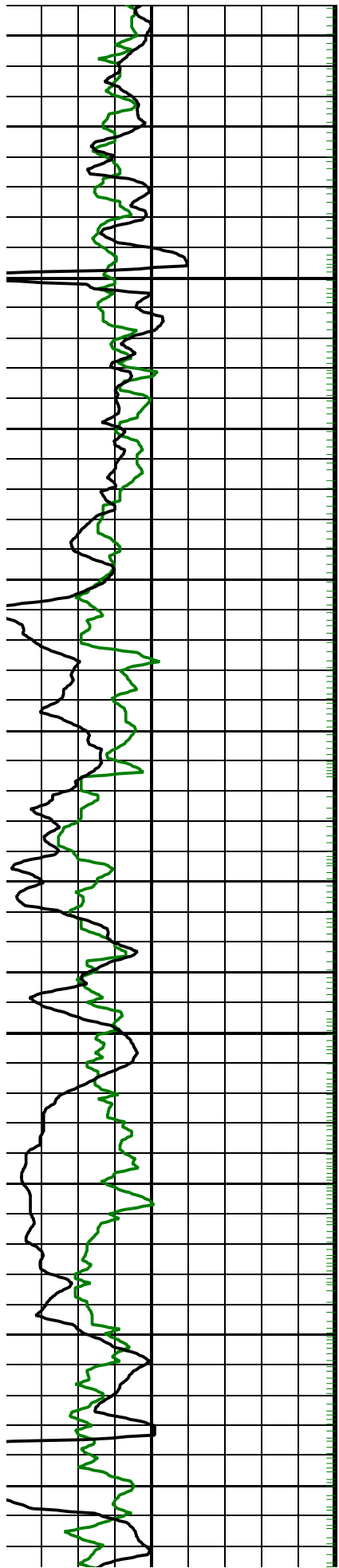




2575

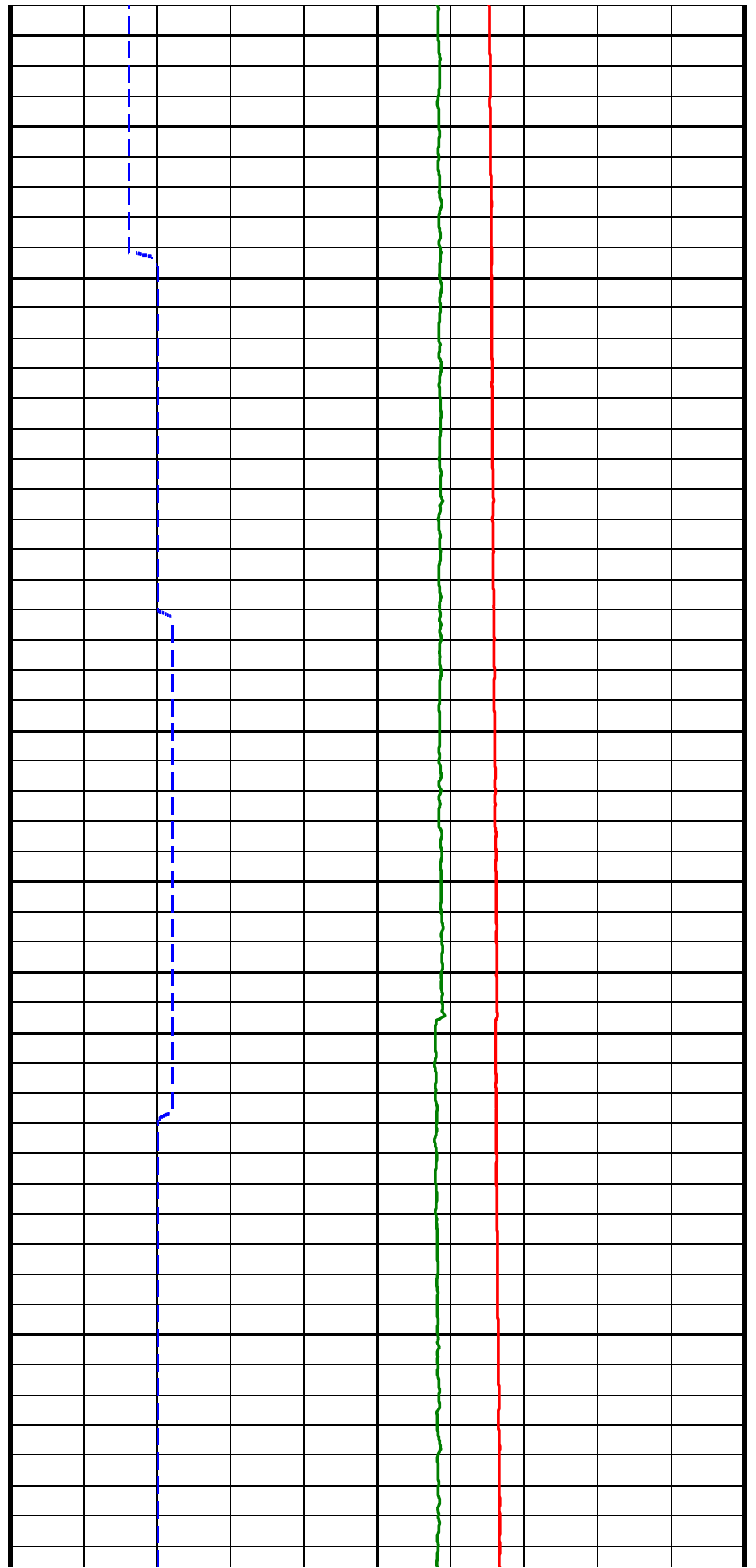
2600

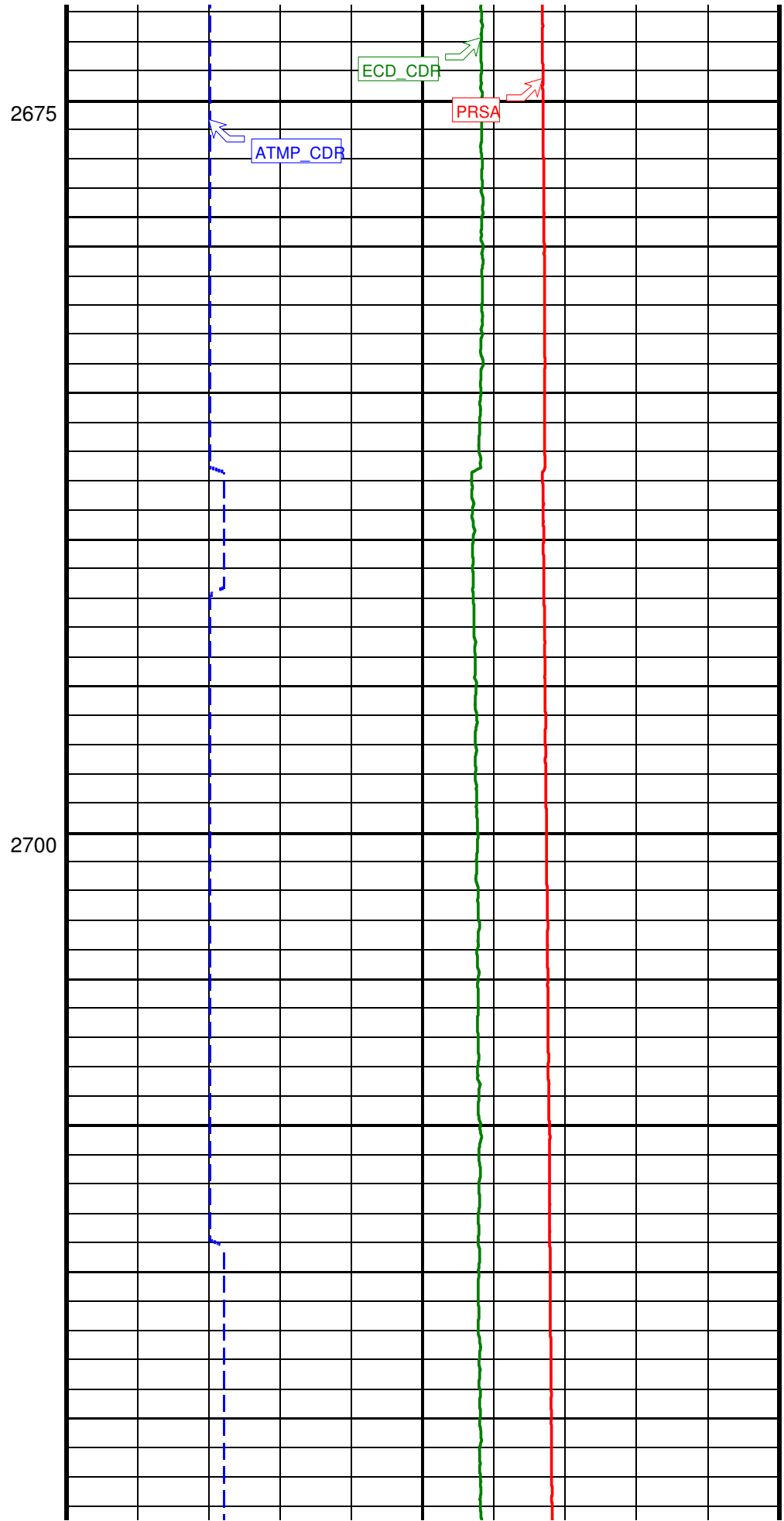
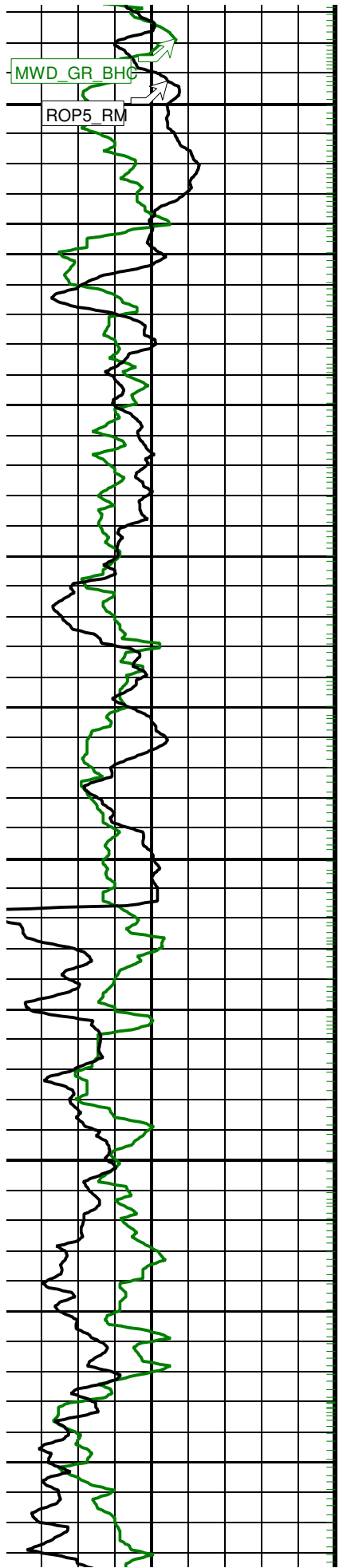


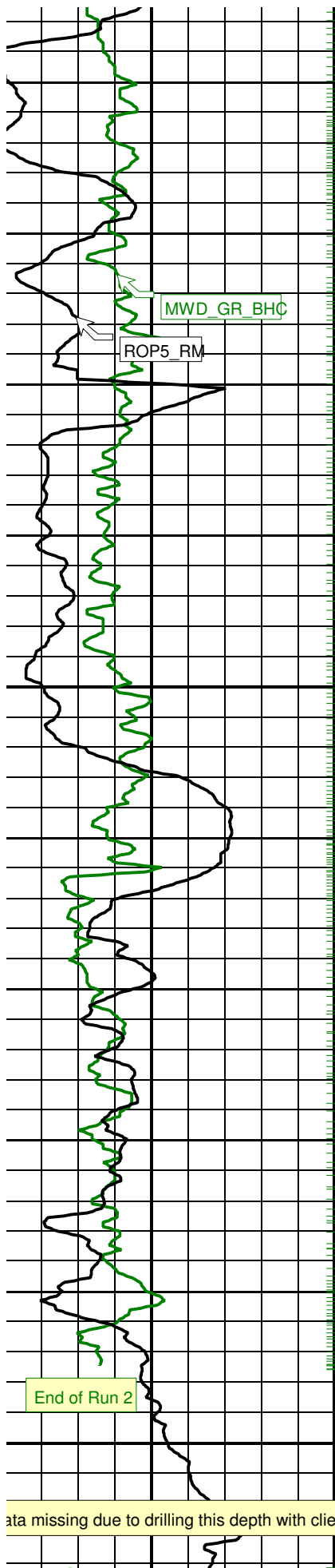


2625

2650



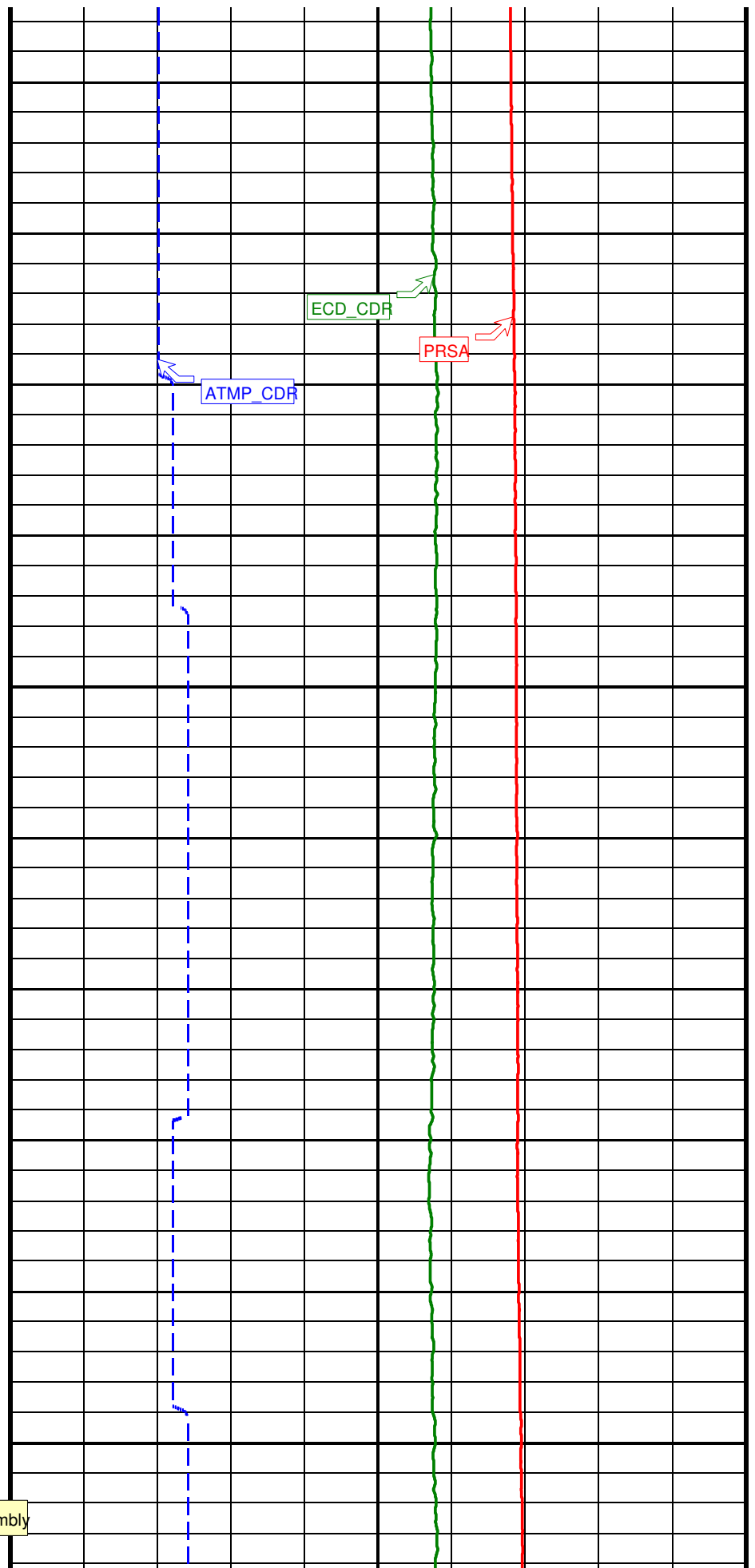


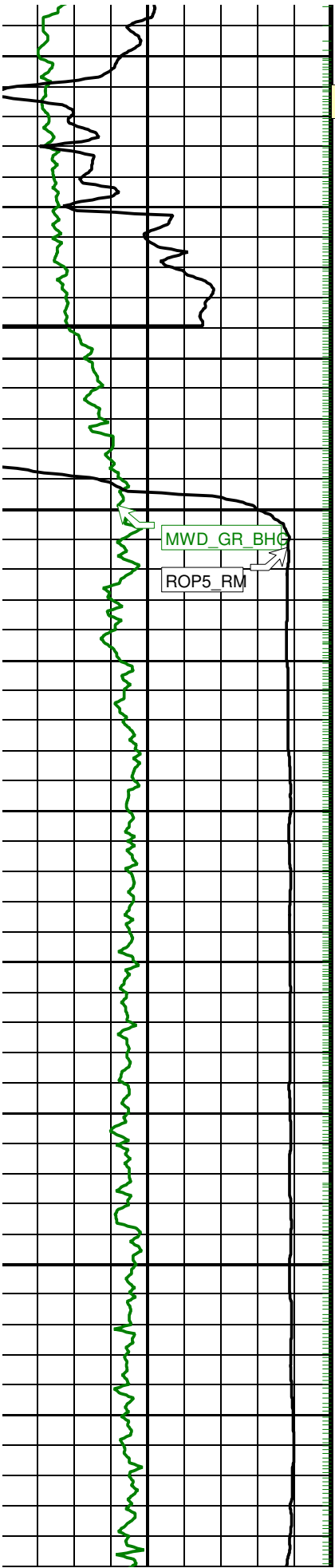


2750

2775

ata missing due to drilling this depth with client BHA assembly



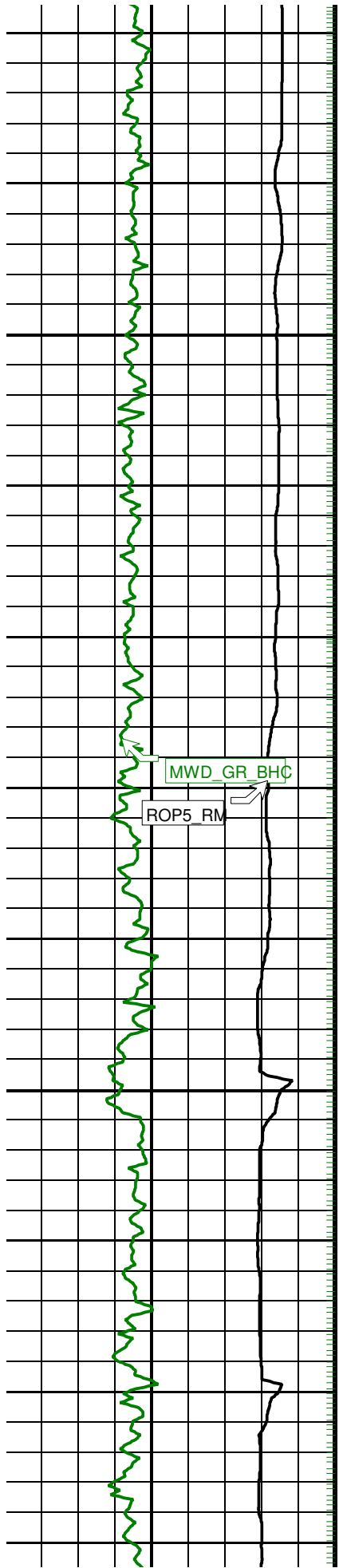


Casing shoe @ 2786.2m

MWD GR BHC
ROP5_RM

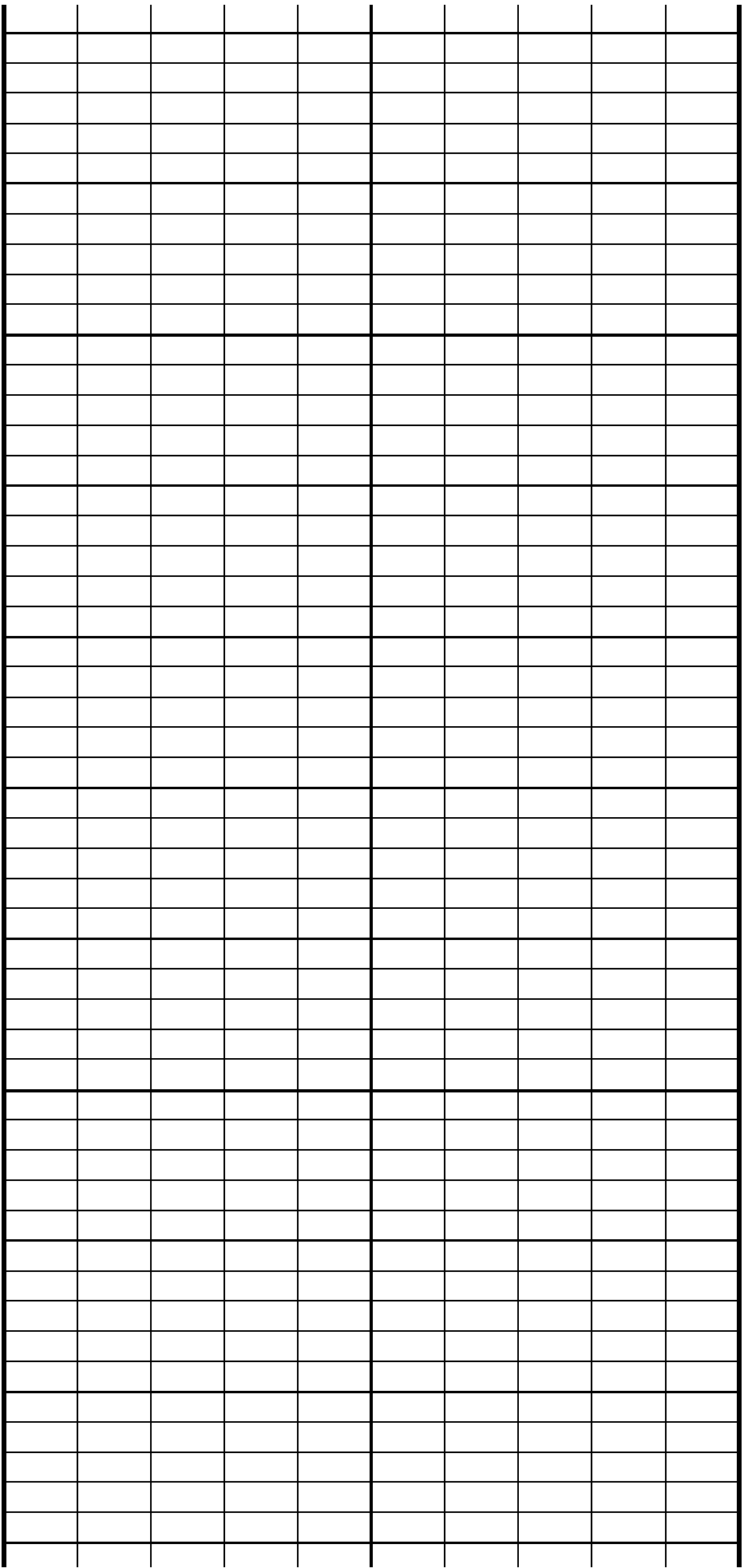
2800

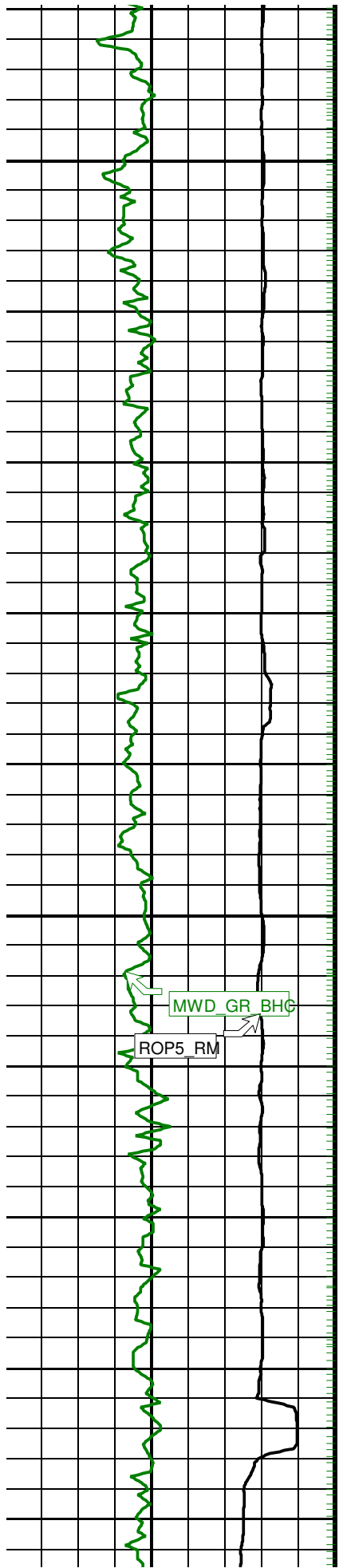
2825



2850

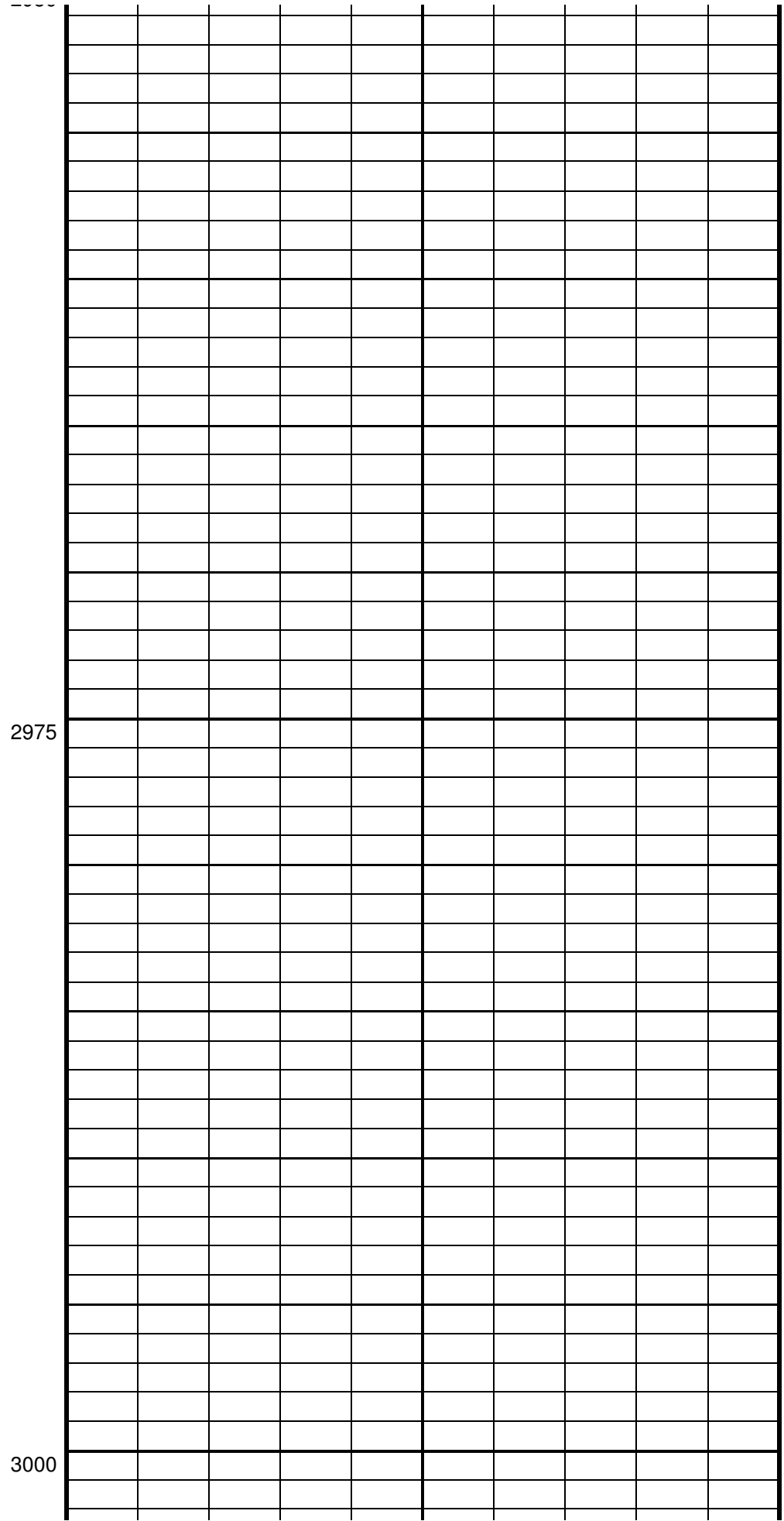
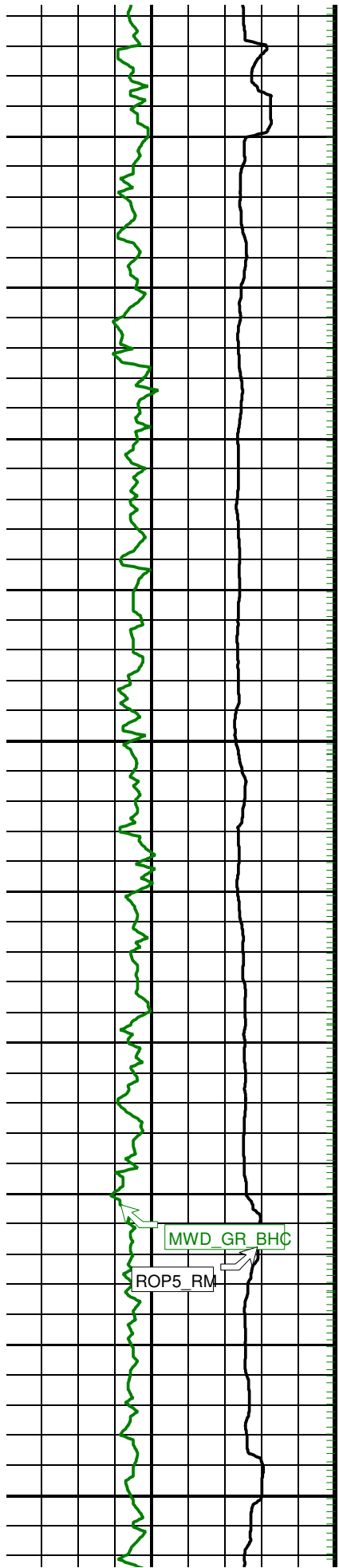
2875

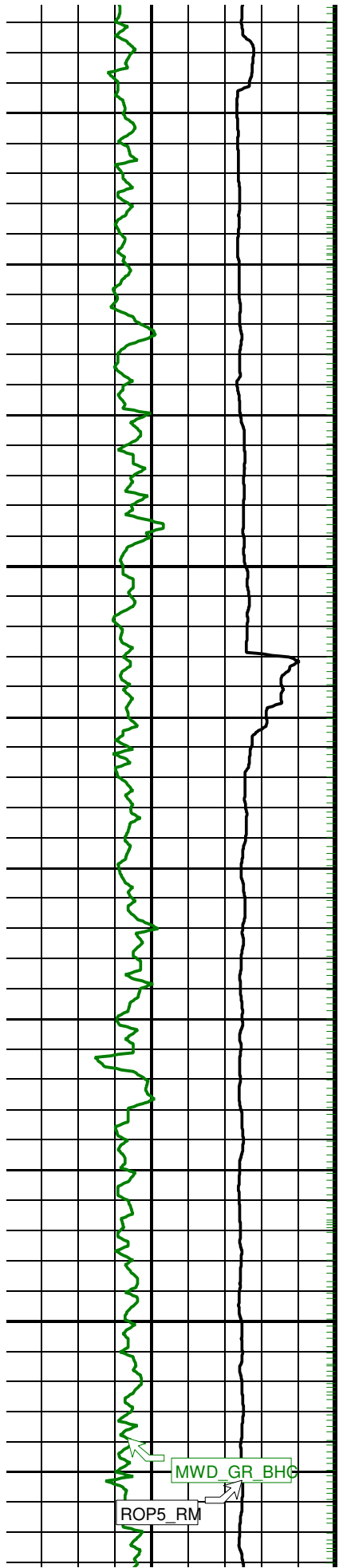




2900

2925

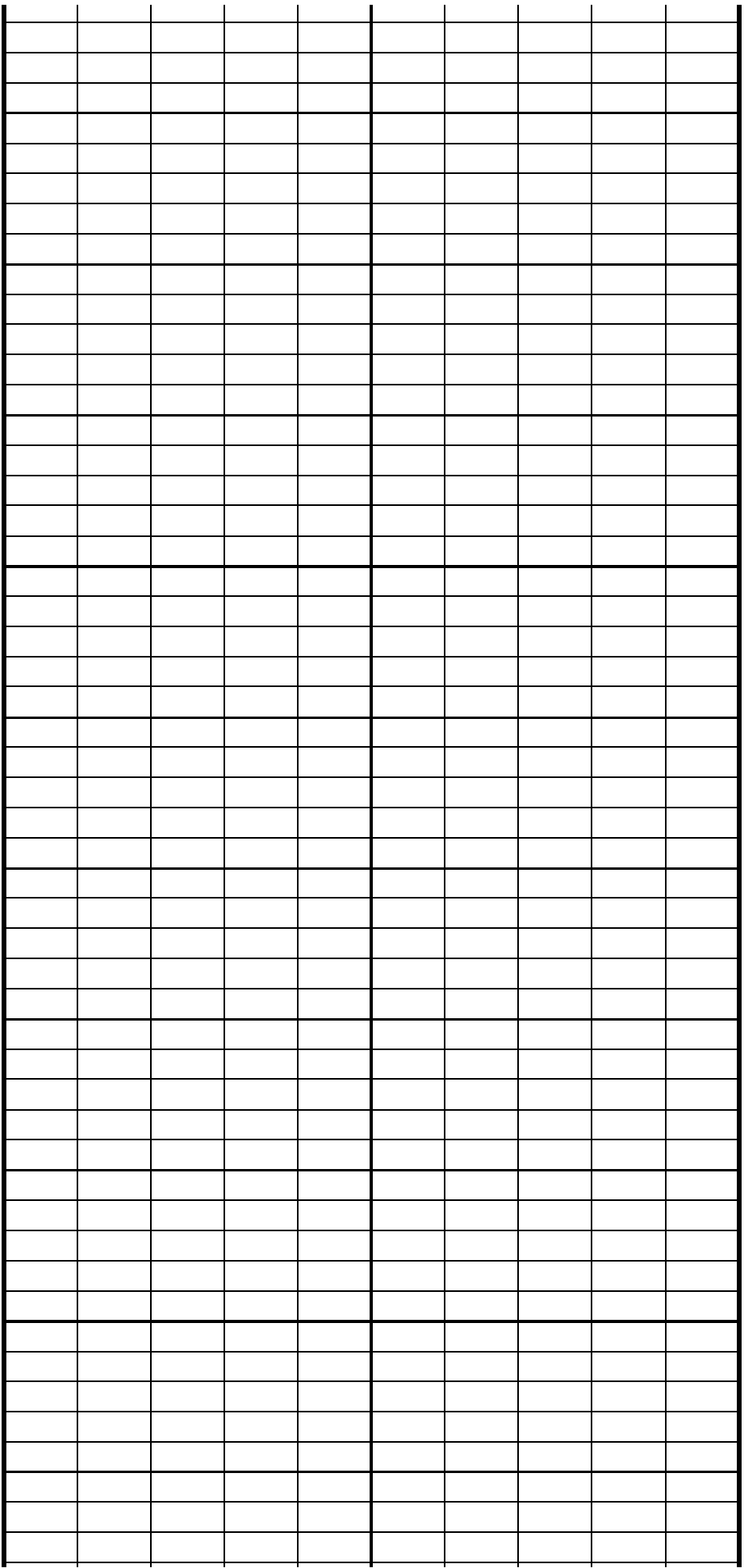


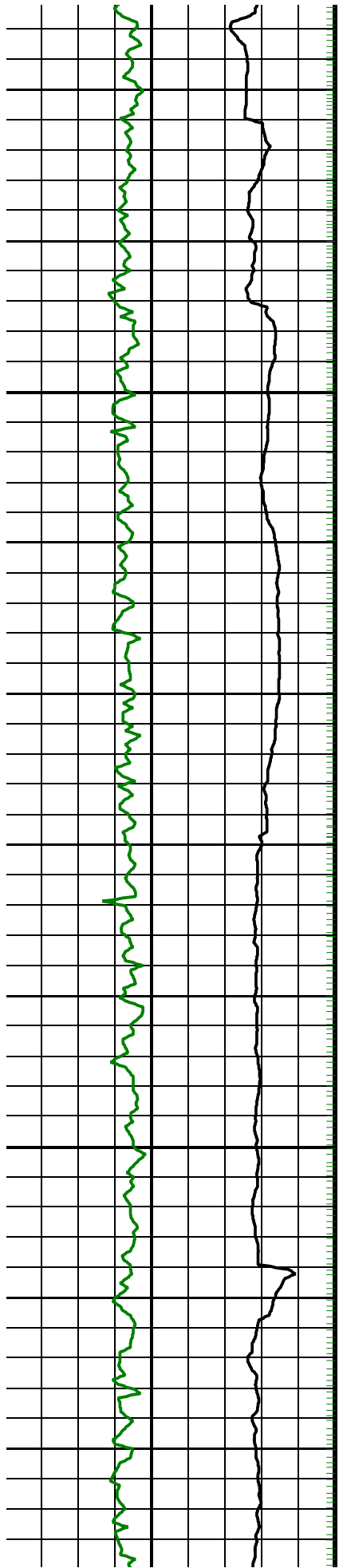


3025

3050

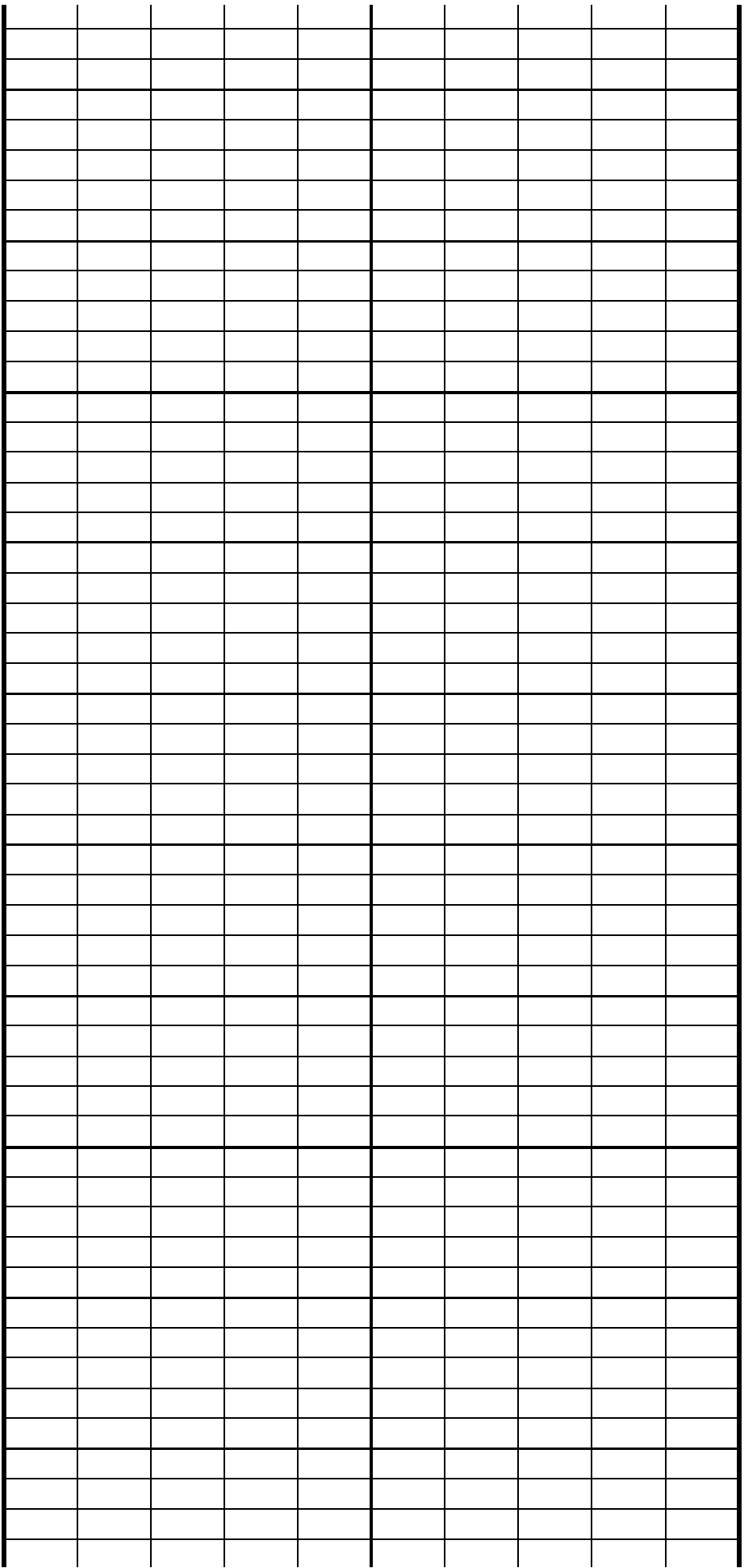
MWD GR BHG
ROP5_RM

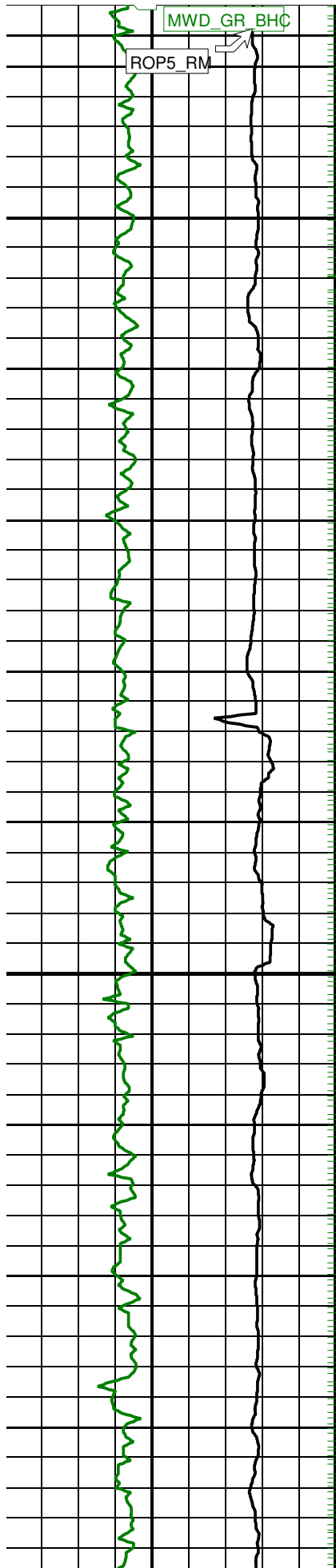




3075

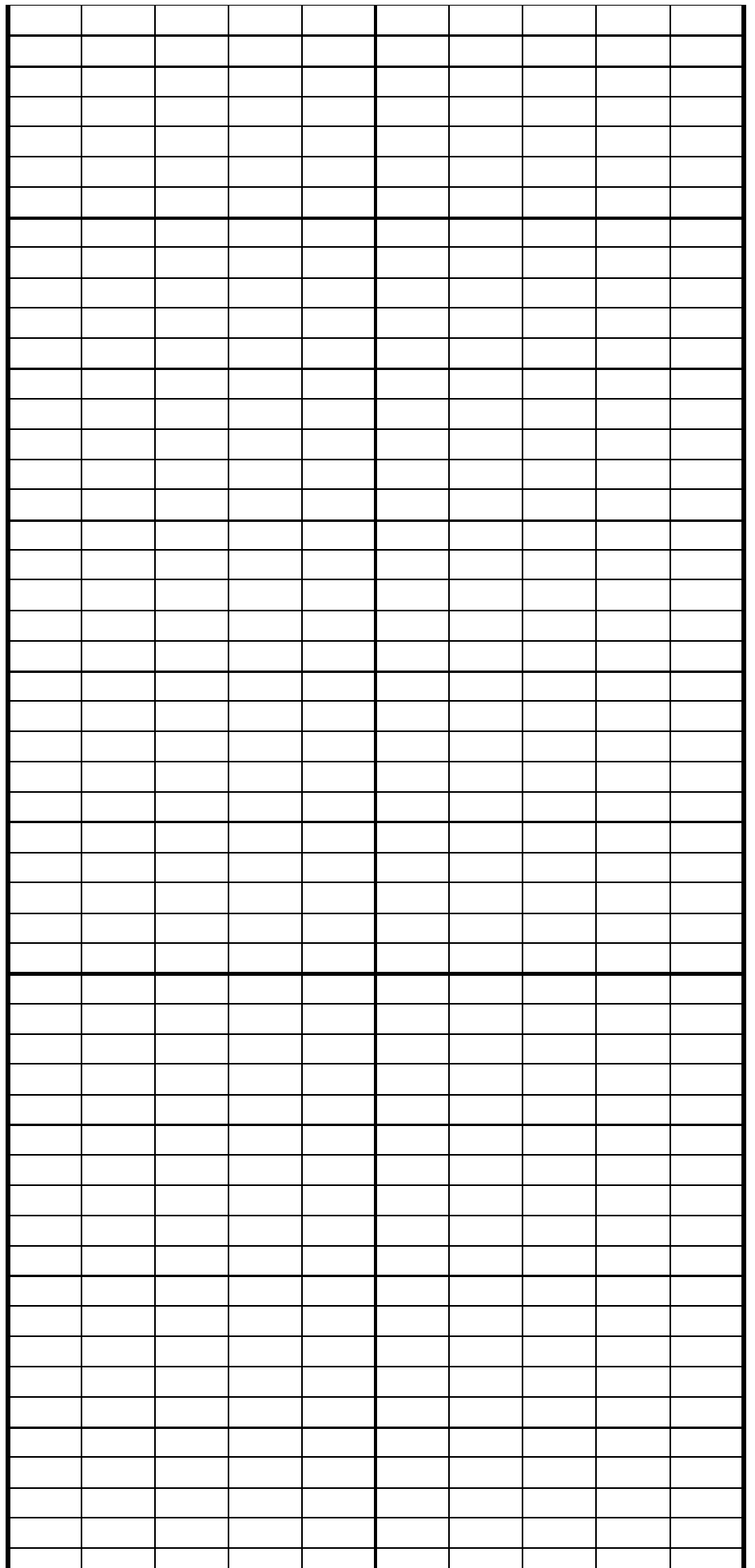
3100

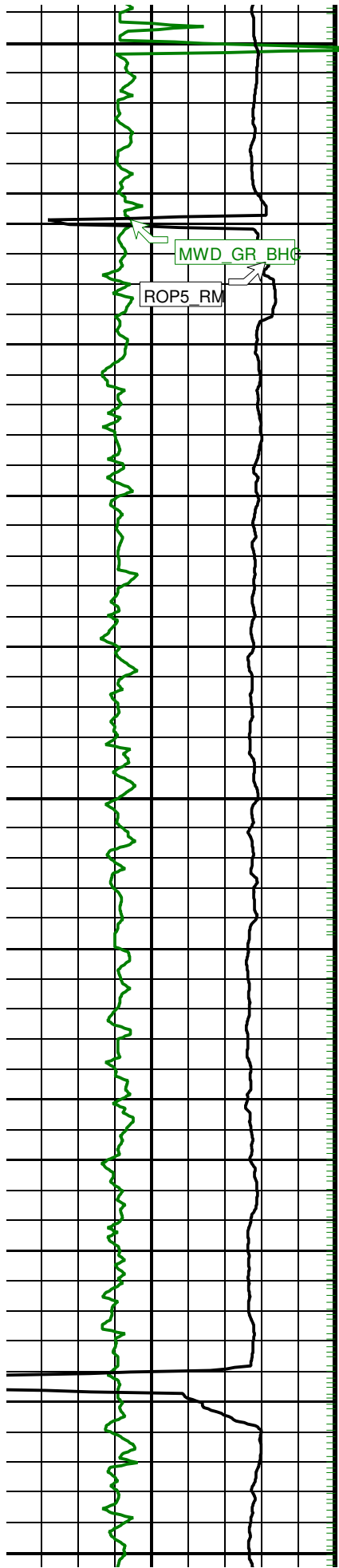




3125

3150





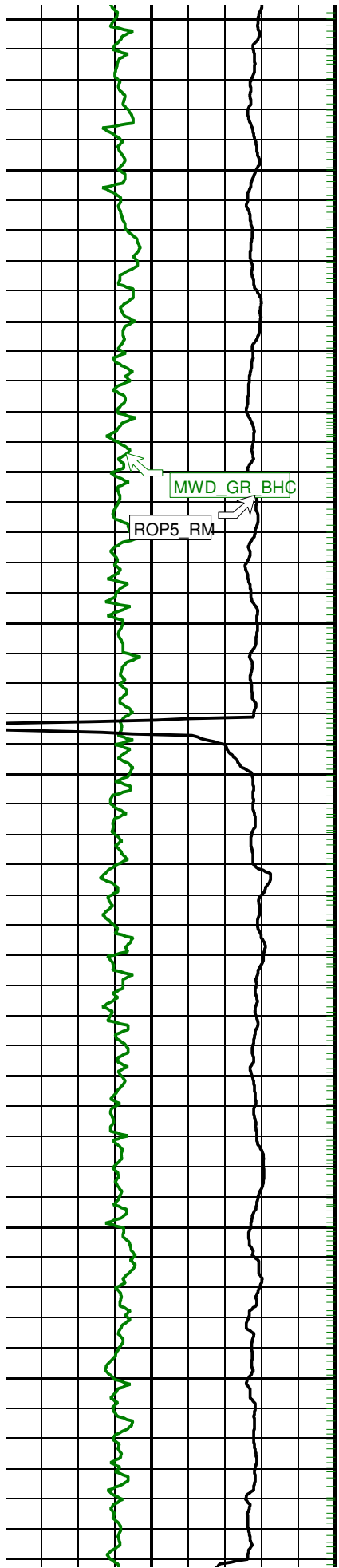
3175

3200

3225

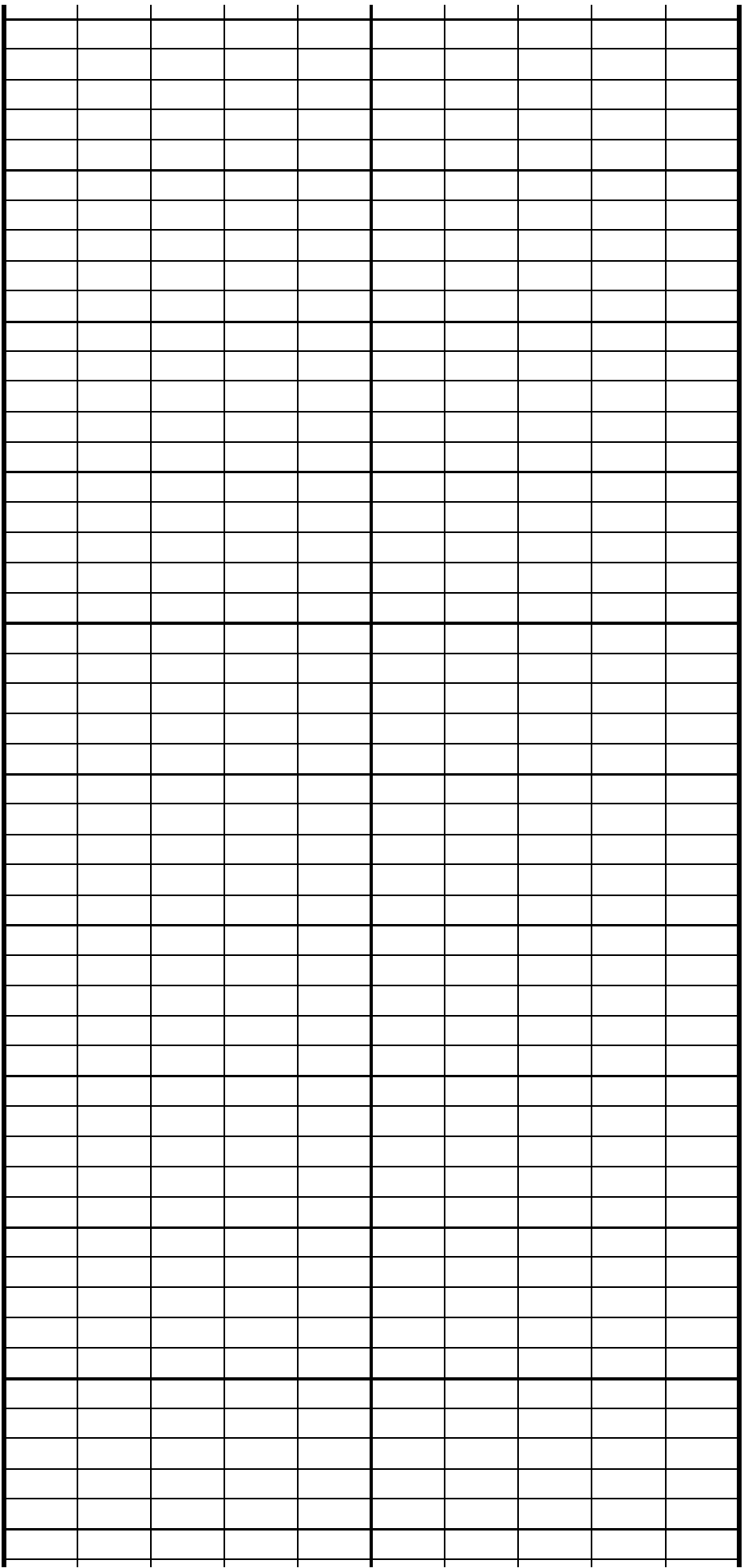
MWD GR BHC

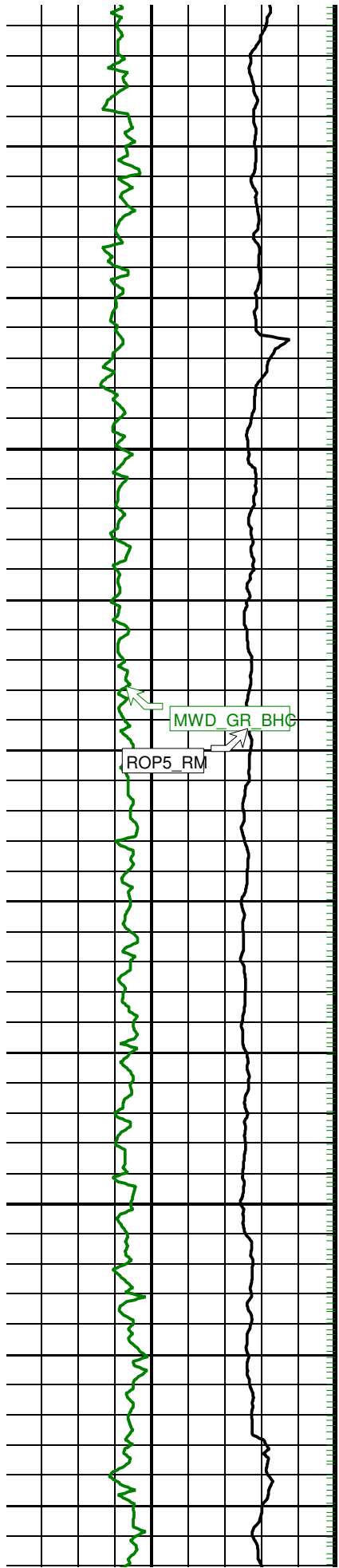
ROP5 RM



3250

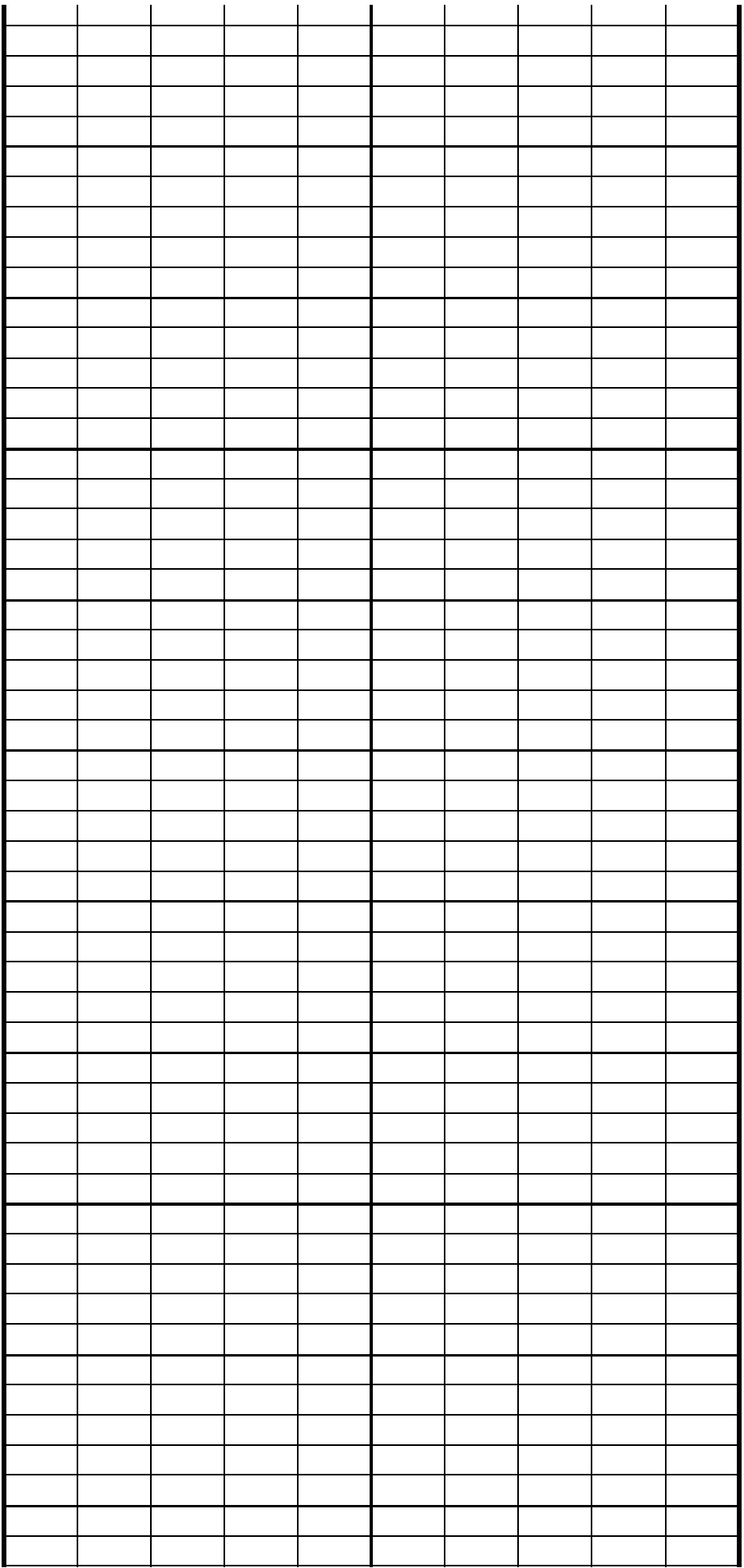
3275

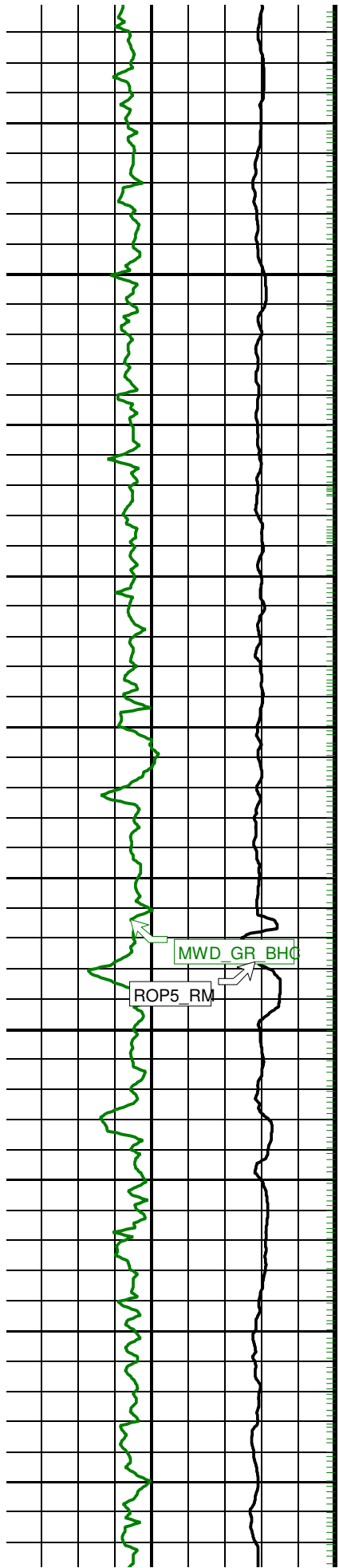




3300

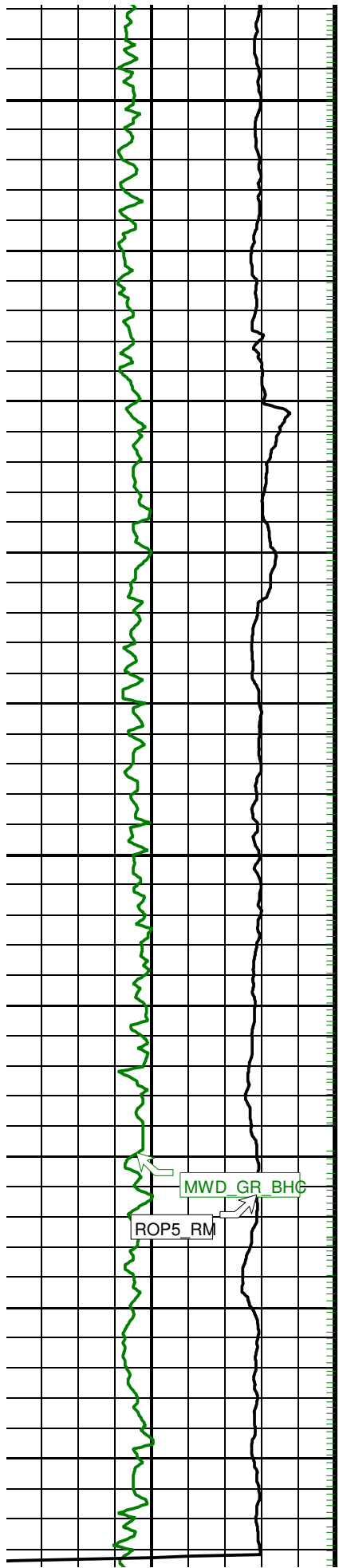
3325





3350

3375

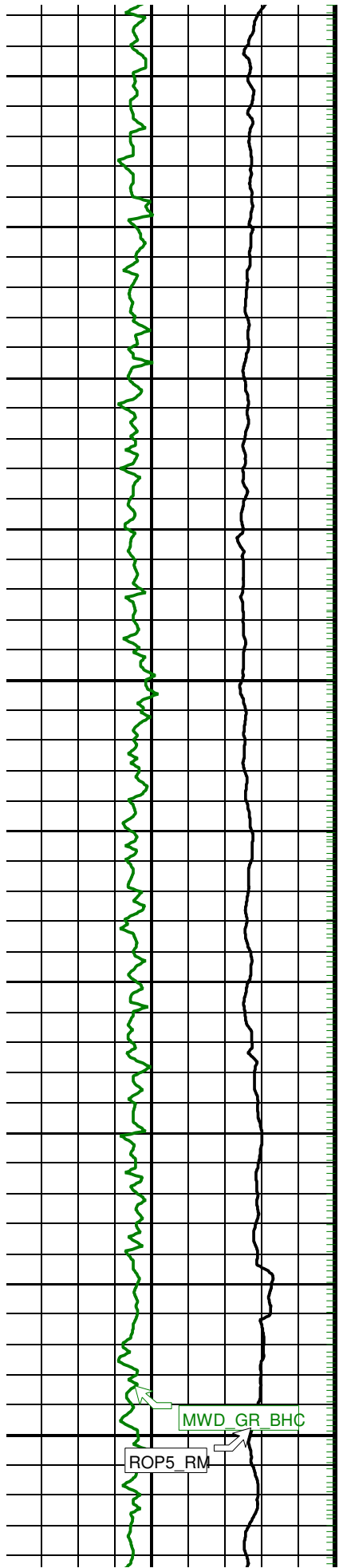


3400

3425

MWD GR BHC

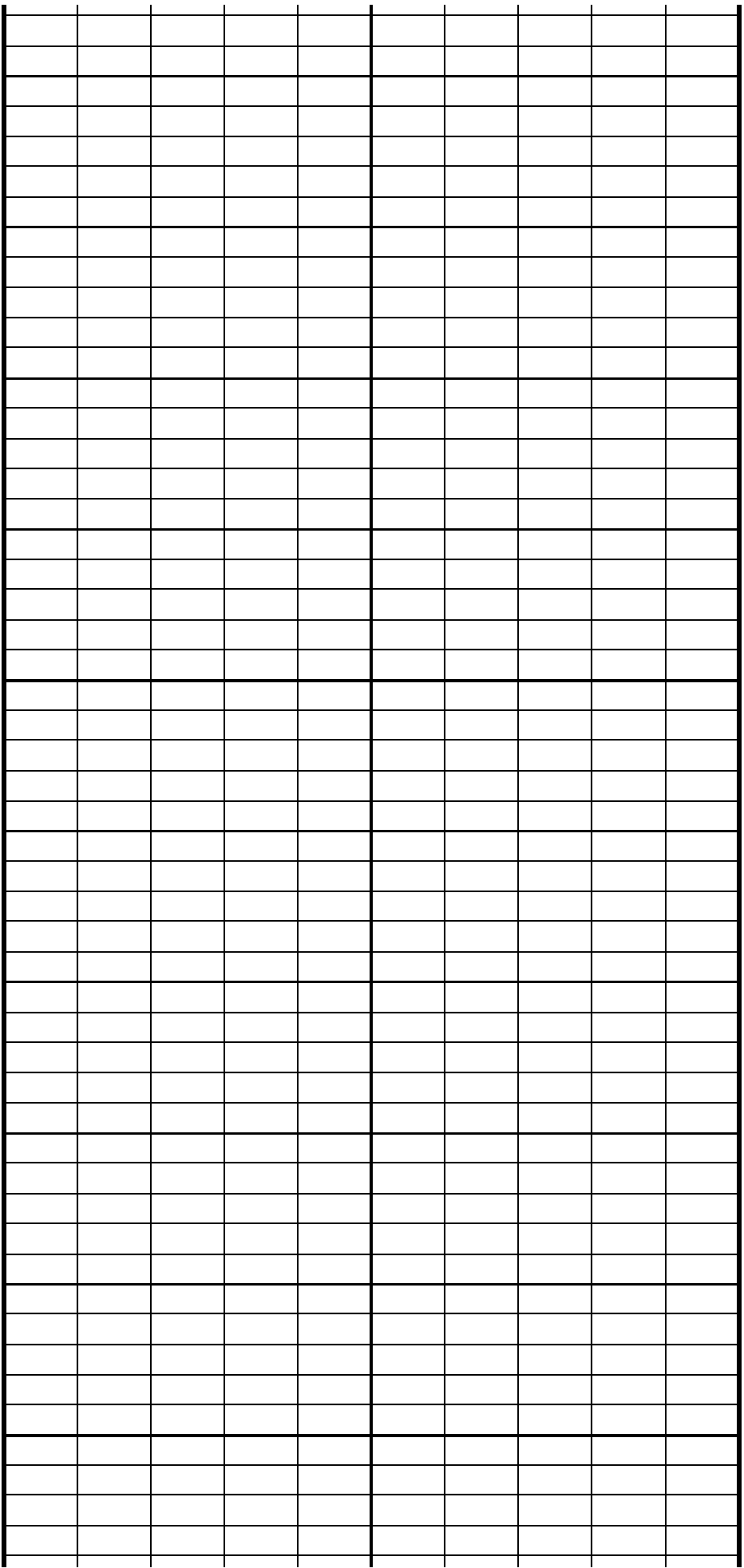
ROP5_RM

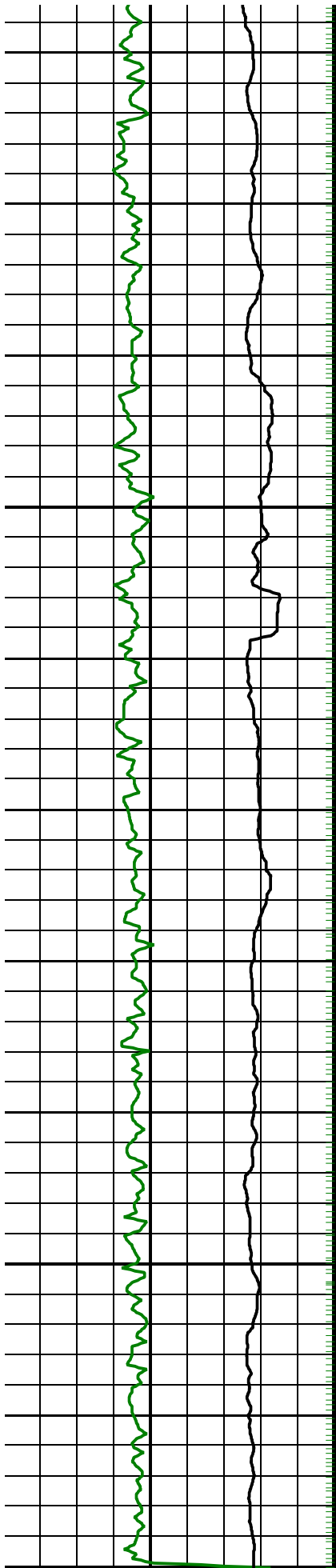


3475

3500

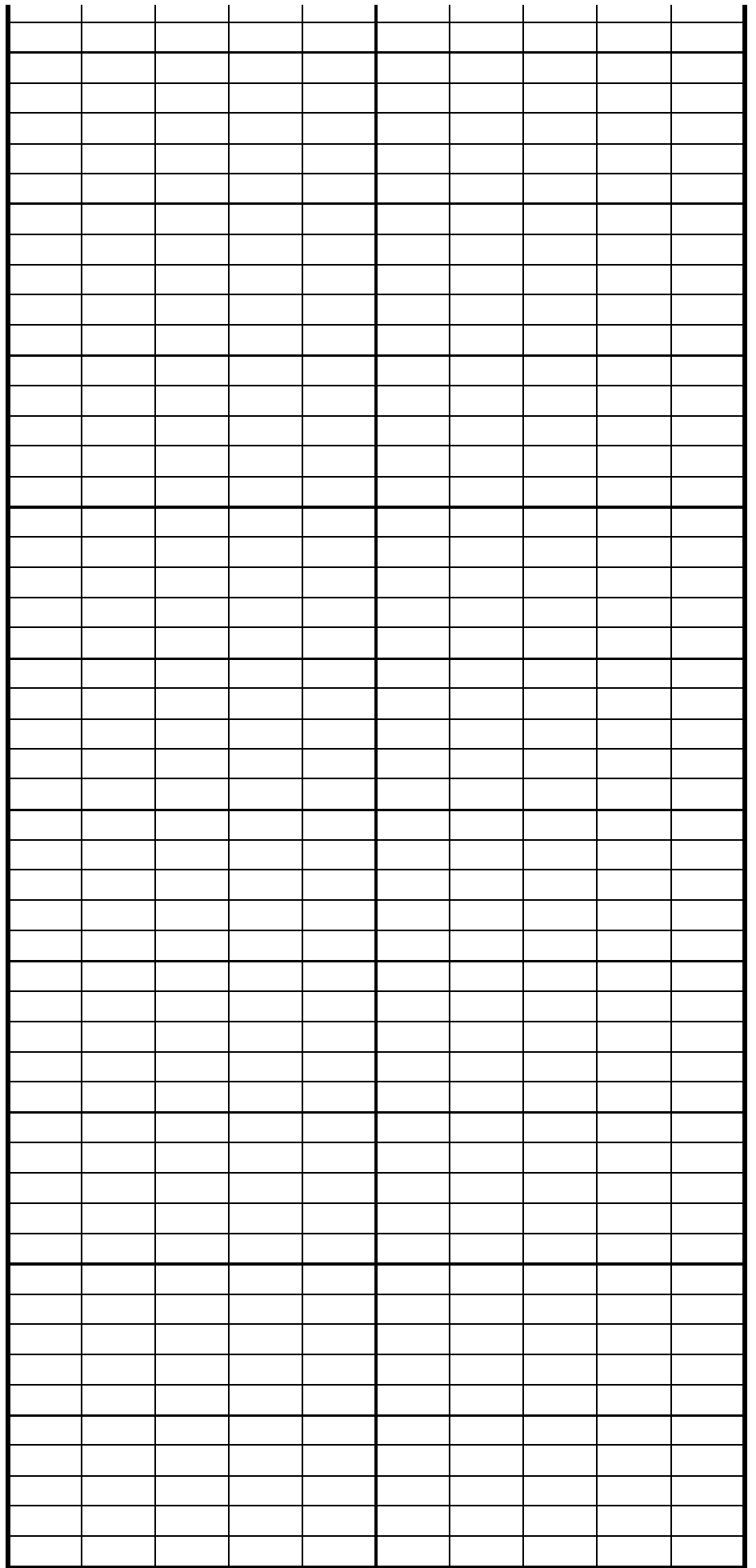
MWD GR BHC
ROP5 RM

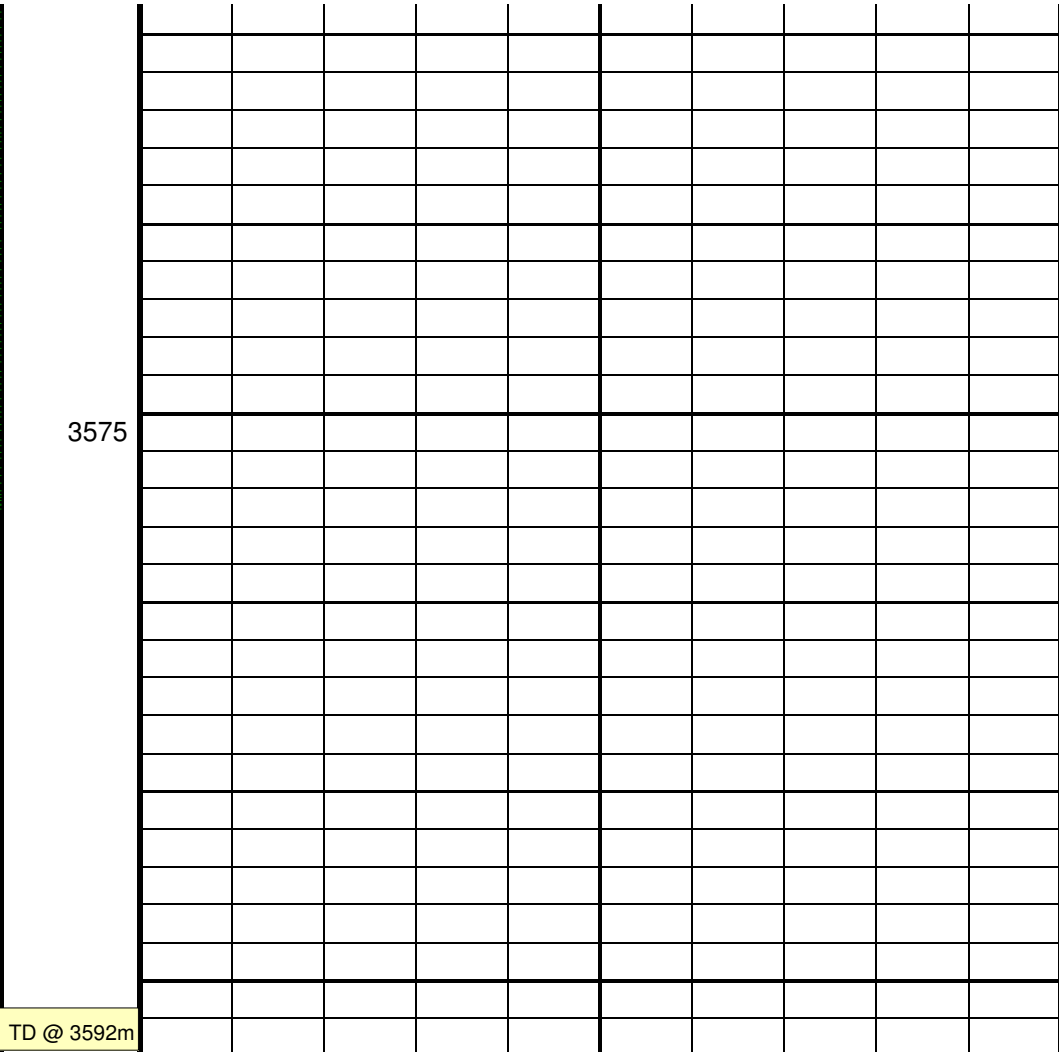
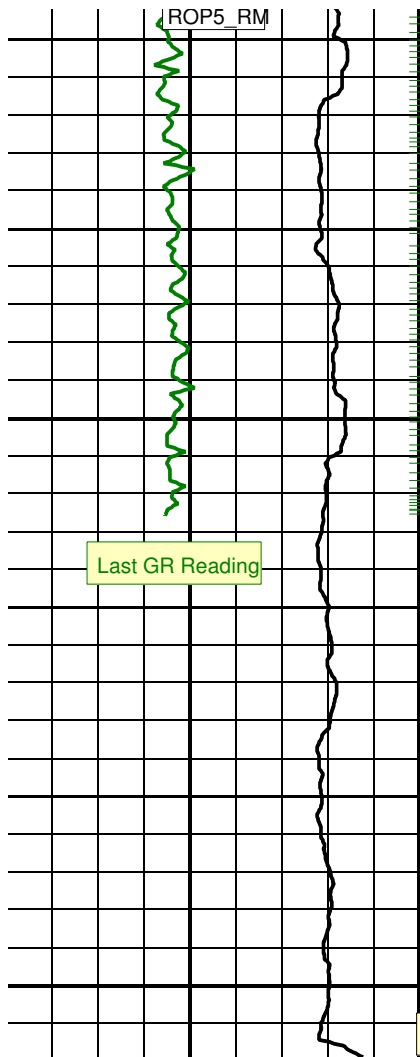




3525

3550





TD @ 3592m

| | |
|--|-----|
| ARC Gamma Ray (GR ARC) (GAPI) | 200 |
| Borehole Corrected Gamma Ray (MWD GR BHC) (GAPI) | 200 |
| Rate of Penetration, Averaged over Last 5ft (ROP5_RM) (M/HR) | 0 |

| | | |
|--|---|------|
| Annulus Pressure (APRS ARC) (PSI) | 0 | 6000 |
| Equivalent Circulating Density (ECD_CDR) (SG) | 0 | 2 |
| Annular Pressure (PRSA) (PSI) | 0 | 6000 |
| Annular Temperature (ATMP_CDR) (DEGC) | 0 | 50 |

PIP SUMMARY

- + ARC Gamma Ray Samples
- + Gamma-Ray Samples

IDEAL Version: ID13_OC_02
IDF