

**Company: CDEX**  
**Well: C0009A**  
**Field: Kumanonada, Offshore Kii peninsula**  
**Rig: Chikyu**  
**Country: JAPAN**

**Junk Catcher (Guage 8-1/4")**  
**3300.0 m – 2079.0 m**  
**Suite 1, Run 4 (1:200)**

**Rig:** Chikyu  
**Field:** Kumanonada, Offshore Kii peninsula  
**Location:** NanKai Trough  
**Well:** C0009A  
**Company:** CDEX

LOCATION		Elev.:	K.B.
NanKai Trough		G.L.	D.F.
NT2-11B		28.30 m	28.30 m
Permanent Datum:	MEAN SEA LEVEL	Elev.:	28.30 m
Log Measured From:	DRILL FLOOR	0.00 m	above Perm. Datum
Drilling Measured From:	DRILL FLOOR		
Prefecture: Wakayama	Max. Well Deviation	Longitude	Latitude
	0.7 deg	136° 32.1489' E	33° 27.4704' N

		Run 1	Run 2	Run
<b>PVT DATA</b>				
Oil Density				
Water Salinity		110000 ppm		
Gas Gravity				
Bo				
Bw				
1/Bg				
Bubble Point Pressure				
Bubble Point Temperature				
Solution GOR				
Maximum Deviation	0.7 deg			
<b>CEMENTING DATA</b>				
Primary/Squeeze	Primary			
Casing String No				
Lead Cement Type				
Volume				
Density				
Water Loss				
Additives				
Tail Cement Type				
Volume				
Density				
Water Loss				
Additives				
Expected Cement Top				

Logging Date	23-Jul-2009	
Run Number	1	
Depth Driller	3648.72 m	
Schlumberger Depth	3300 m	
Bottom Log Interval	3300 m	
Top Log Interval	2079 m	
Casing Fluid Type	KCl-NaCl Polymer	
Salinity	110000 ppm	
Density	1.1 g/cm3	
Fluid Level	10 m	
<b>BIT/CASING/TUBING STRING</b>		
Bit Size	17.000 in	
From	3648.72 m	
To	2795 m	
Casing/Tubing Size	13.375 in	
Weight	68 lbm/ft	
Grade		
From	3624.32 m	
To	2079 m	
Maximum Recorded Temperatures	32 degC	31
Logger On Bottom	24-Jul-2009	2:30
Unit Number	4308	JPOP
Recorded By	P.Thongpracharn	
Witnessed By	Y.Sanada	

Logging Date	23-Jul-2009	
Run Number	1	
Depth Driller	3648.72 m	
Schlumberger Depth	3300 m	
Bottom Log Interval	3300 m	
Top Log Interval	2079 m	
Casing Fluid Type	KCl-NaCl Polymer	
Salinity	110000 ppm	
Density	1.1 g/cm3	
Fluid Level	10 m	
<b>BIT/CASING/TUBING STRING</b>		
Bit Size	17.000 in	
From	3648.72 m	
To	2795 m	
Casing/Tubing Size	13.375 in	
Weight	68 lbm/ft	
Grade		
From	3624.32 m	
To	2079 m	
Maximum Recorded Temperatures	32 degC	31
Logger On Bottom	24-Jul-2009	2:30
Unit Number	4308	JPOP
Recorded By	P.Thongpracharn	
Witnessed By	Y.Sanada	

## DEPTH SUMMARY LISTING

Date Created: 23-JUL-2009 18:46:38

### Depth System Equipment

Depth Measuring Device	Tension Device	Logging Cable
Type: IDW-JA Serial Number: 6726 Calibration Date: Calibrator Serial Number: 17 Calibration Cable Type: 7-46A XXS Wheel Correction 1: -6 Wheel Correction 2: -6	Type: CMTD-B/A Serial Number: 2986 Calibration Date: 16-Apr-09 Calibrator Serial Number: 1049 Number of Calibration Points: 10 Calibration RMS: 373 Calibration Peak Error: 499	Type: 7-46A XXS Serial Number: 6019 Length: 9200 M <hr/> Conveyance Method: Wireline Rig Type: Offshore Floater with WMC

### Depth Control Parameters

Log Sequence:	Subsequent Trip To the Well
Reference Log Name:	Casing Tally provided by client
Reference Log Run Number:	
Reference Log Date:	
Subsequent Trip Down Log Correction:	1.80 M

### Depth Control Remarks

1. Schlumberger Depth Control Policy is followed.
2. IDW used as primary depth control device.
3. Z-Chart used as secondary depth control device.
4. Tide Level = 0 m.
- 5.
- 6.

#### DISCLAIMER

THE USE OF AND RELIANCE UPON THIS RECORDED-DATA BY THE HEREIN NAMED COMPANY (AND ANY OF ITS AFFILIATES, PARTNERS, REPRESENTATIVES, AGENTS, CONSULTANTS AND EMPLOYEES) IS SUBJECT TO THE TERMS AND CONDITIONS AGREED UPON BETWEEN SCHLUMBERGER AND THE COMPANY, INCLUDING: (a) RESTRICTIONS ON USE OF THE RECORDED-DATA; (b) DISCLAIMERS AND WAIVERS OF WARRANTIES AND REPRESENTATIONS REGARDING COMPANY'S USE OF AND RELIANCE UPON THE RECORDED-DATA; AND (c) CUSTOMER'S FULL AND SOLE RESPONSIBILITY FOR ANY INFERENCE DRAWN OR DECISION MADE IN CONNECTION WITH THE USE OF THIS RECORDED-DATA.

#### OTHER SERVICES1

- OS1: VSI-GR (WVSP)
- OS2: VSI-GR (Circular WVSP)
- OS3: VSI-GR (ZOVSP)
- OS4:
- OS5:

#### REMARKS: RUN NUMBER 1

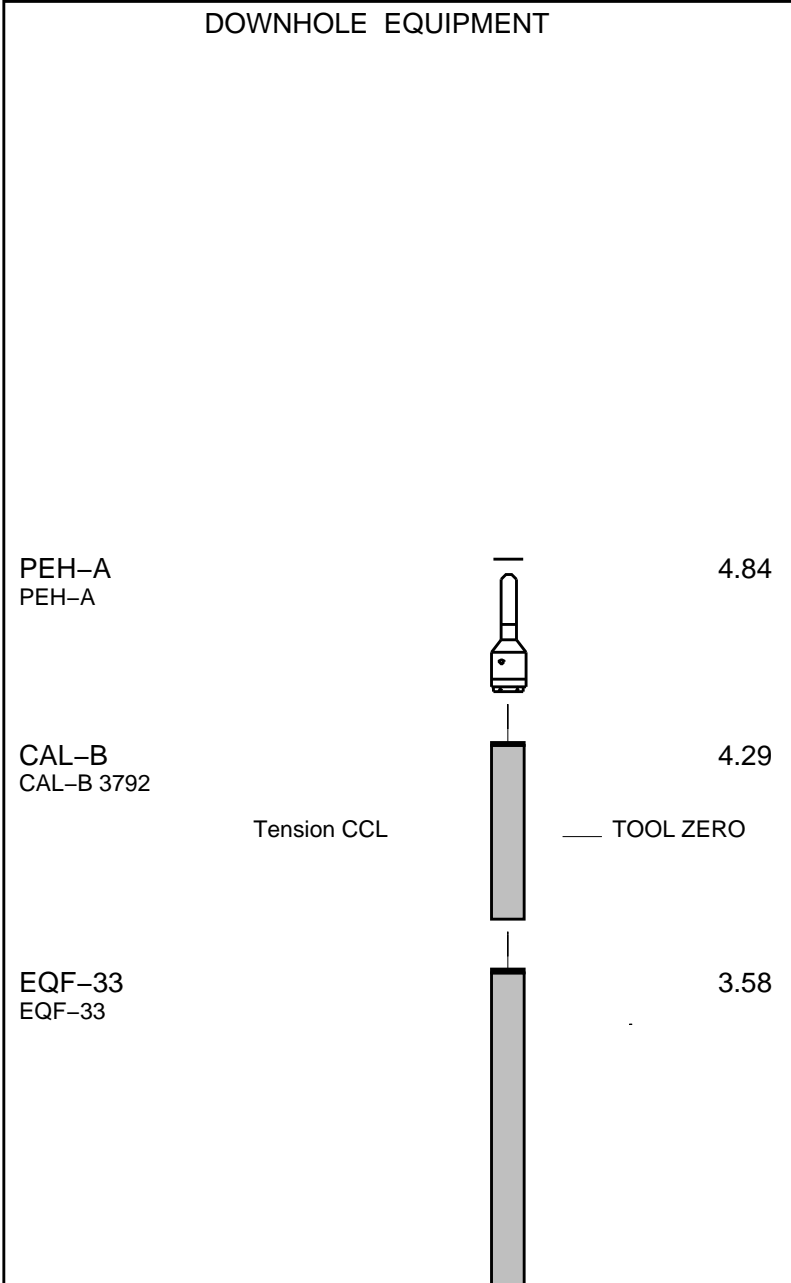
- This is the subsequence trip in the well.
- The depth correlated with casing tally provided by client.
- Tools ran as per toolsketch.
- Guage ring O.D. 12-1/16" could not pass through Top of Hanger @ 2079.03 m.
- Gauge ring O.D. 8-1/4" used instead of O.D. 12-1/16"

RUN 1			RUN 2		
SERVICE ORDER #:		AVDO-0004	SERVICE ORDER #:		
PROGRAM VERSION:		17C0-154	PROGRAM VERSION:		
FLUID LEVEL:		10 m	FLUID LEVEL:		
LOGGED INTERVAL	START	STOP	LOGGED INTERVAL	START	STOP

**EQUIPMENT DESCRIPTION**

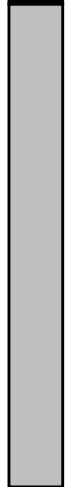
RUN 1 RUN 2

**SURFACE EQUIPMENT**  
WITM (SHM)



AH-Junk Catcher  
 AH-Junk Catcher

2.06



TOOL BOTTOM

0.10

AH-Gauge Ring 8-1/4"  
 AH-Gauge Ring 8-1/4"

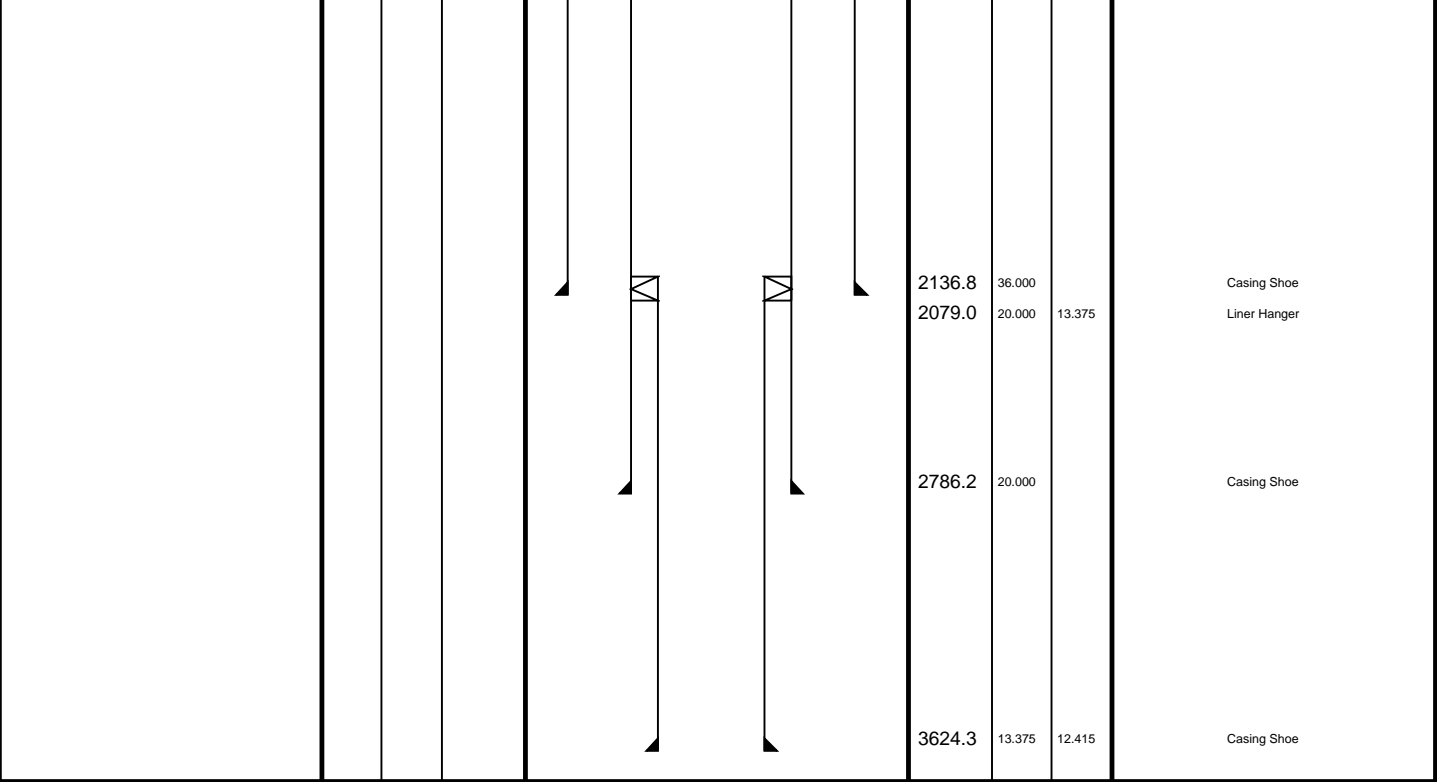
MAXIMUM STRING DIAMETER 8.25 IN  
 MEASUREMENTS RELATIVE TO TOOL ZERO  
 ALL LENGTHS IN METERS

Client: CDEX  
 Well: C0009A  
 Field: Nankai Trough  
 State: Wakayama  
 Country: JAPAN

Drawing Date: 7/11/2009

Rig Name: Chikyu  
 Reference Datum: Mean Sea Level  
 Elevation: 28.3 m

Production String	(in)			(m)			Well Schematic	(m)			(in)	Casing String
	OD	ID	MD	MD	OD	ID						
Derrick Floor Elevation			28.3									
Mean Sea Level			0.0									
								0.0	36.000			Casing String



**Main Log  
1:200**

MAXIS Field Log

Company: CDEX Well: C0009A

**Input DLIS Files**

DEFAULT	CCL_103LUP	FN:255	PRODUCER	24-Jul-2009 02:26	3299.9 M	2064.4 M
---------	------------	--------	----------	-------------------	----------	----------

**Output DLIS Files**

DEFAULT	CCL_104PUP	FN:257	PRODUCER	24-Jul-2009 03:33	3301.7 M	2066.2 M
CLIENT	CCL_104PUC	FN:258	CUSTOMER	24-Jul-2009 03:33	3301.7 M	2066.2 M

**OP System Version: 17C0-154**

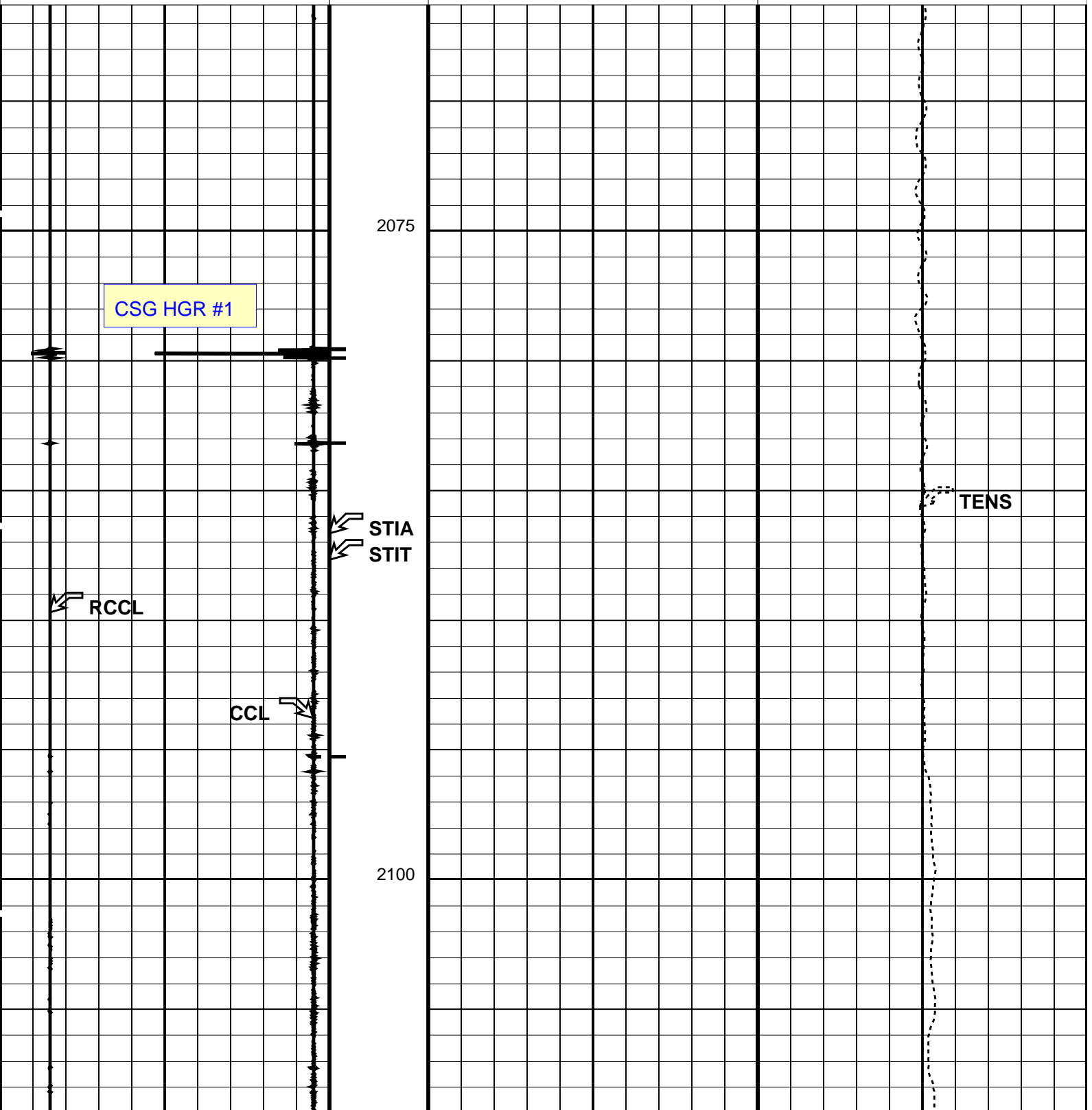
CAL-B 17C0-154

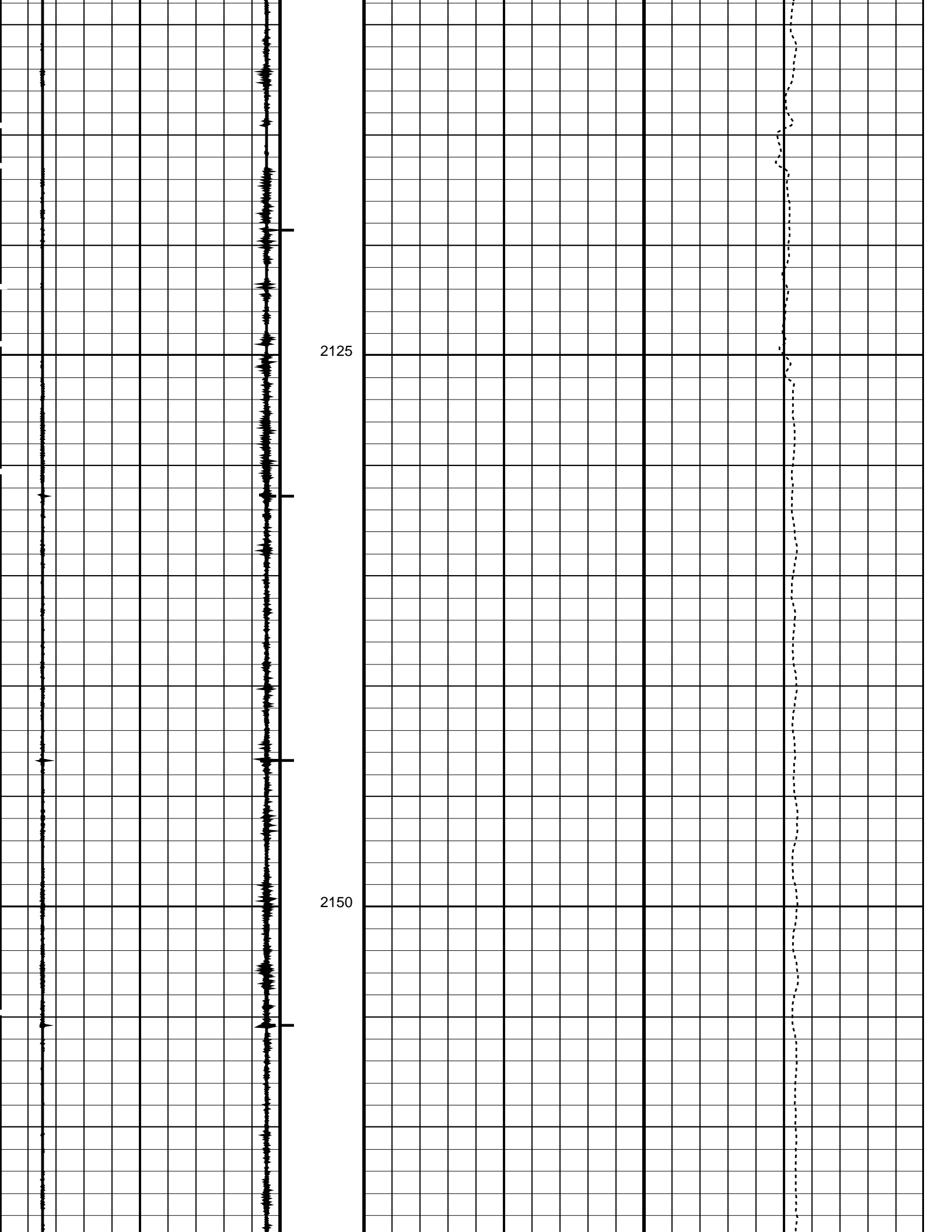
PIP SUMMARY

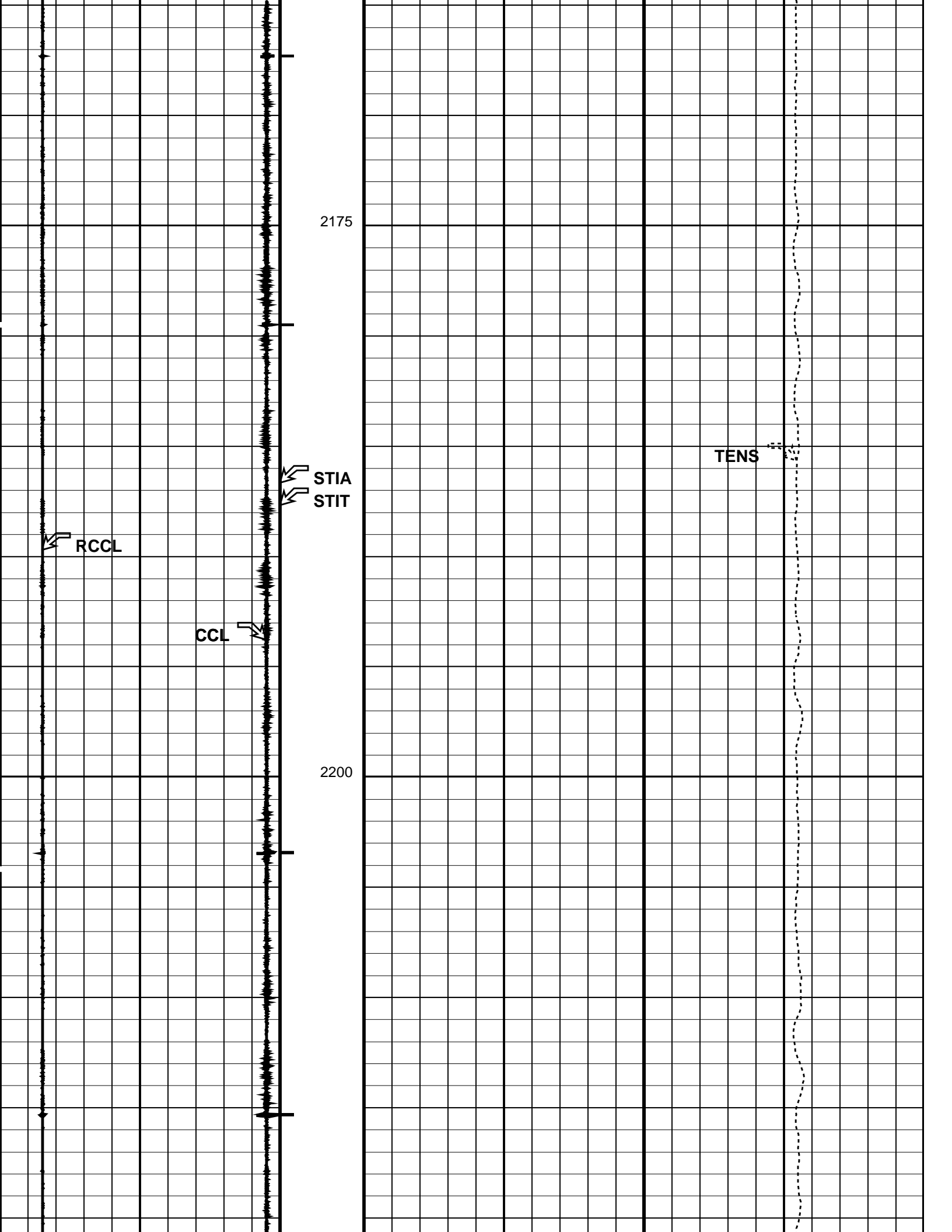
└ Casing Collars

			Tool/Tot. Drag From D3T to STIA
Raw Casing Collar Locator (RCCL)			Cable Drag From STIA to STIT
-3 (----) 17			
Casing Collar Locator (CCL)			Stuck Stretch (STIT)
-19 (----) 1			0 (M) 20

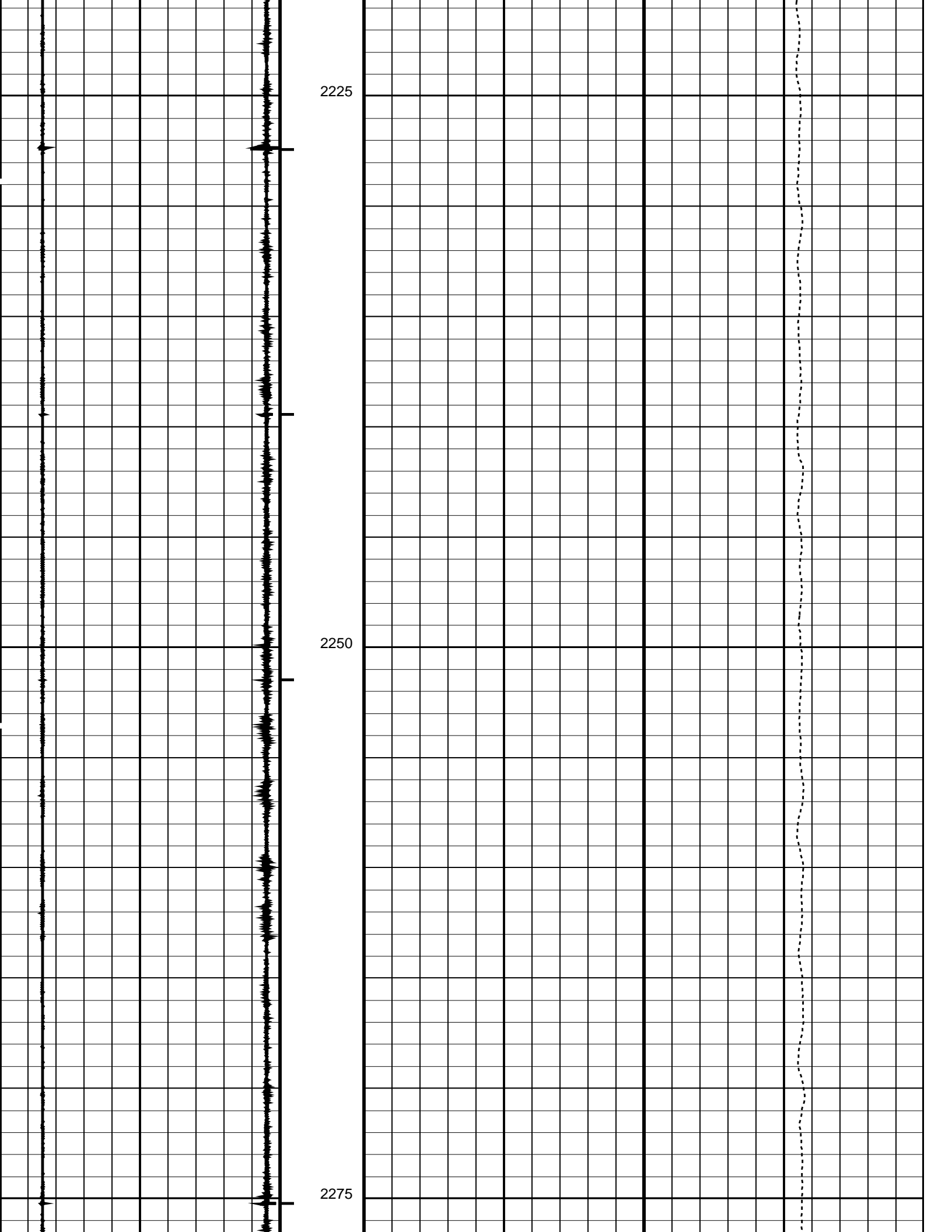
Tension (TENS)  
(LBF) 0 5000

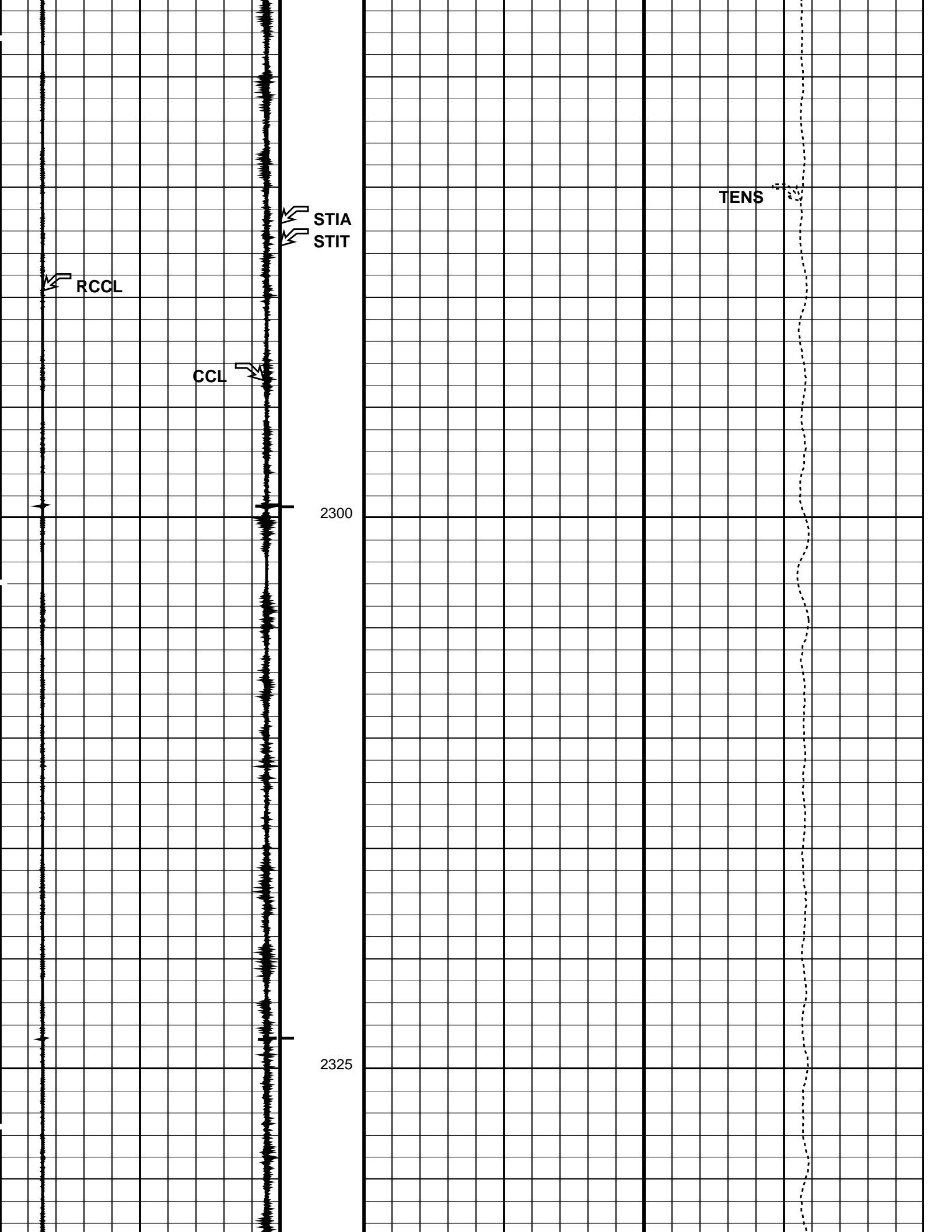


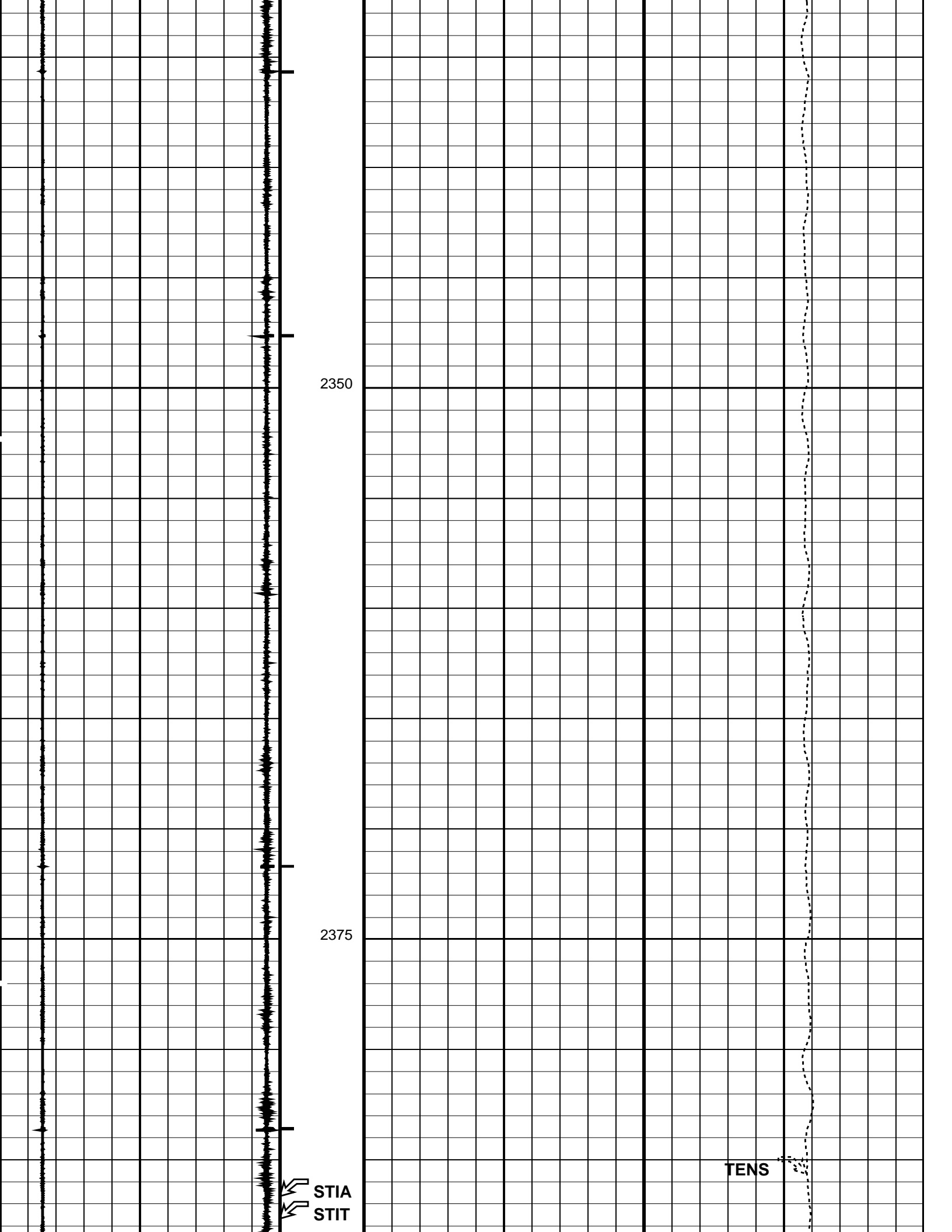












2350

2375

STIA  
STIT

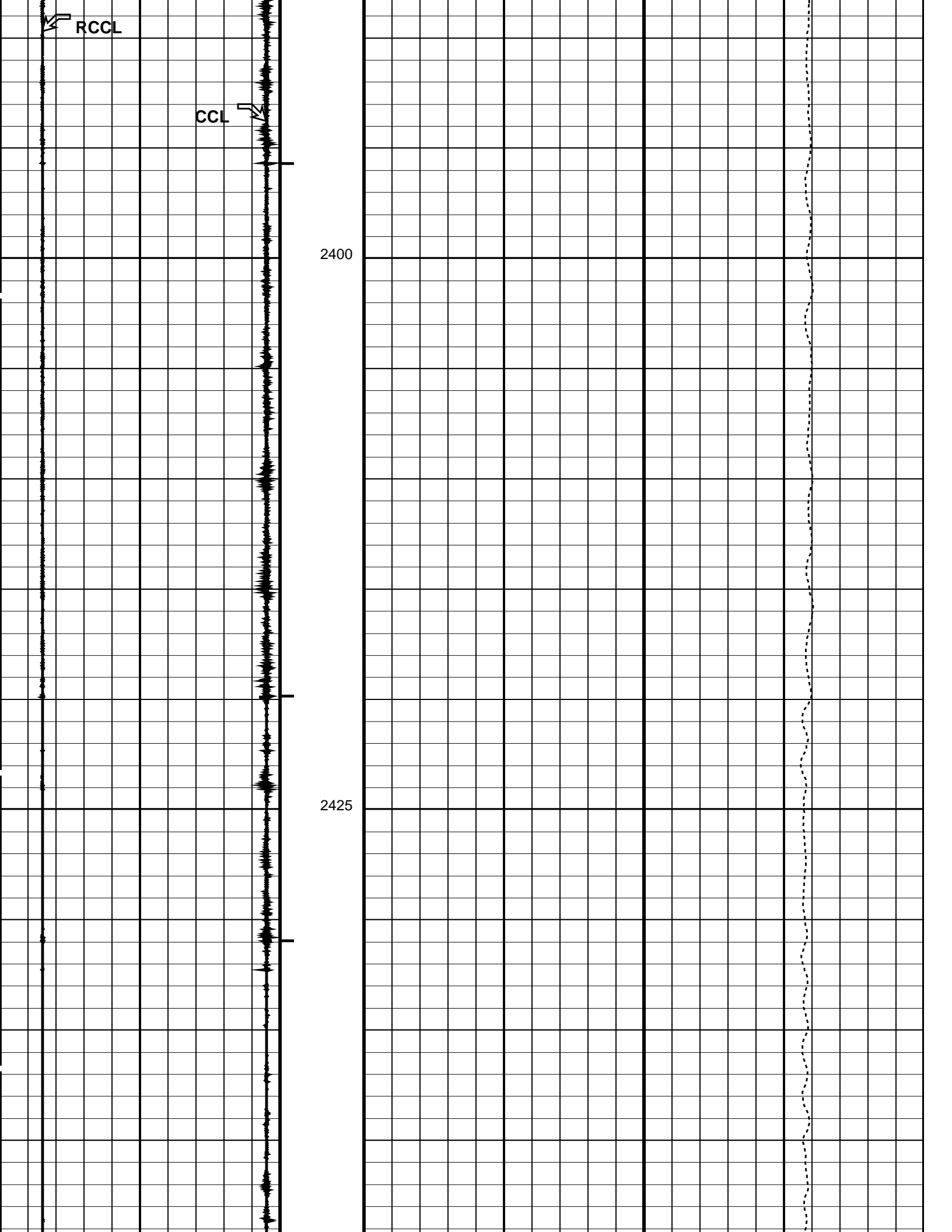
TENS

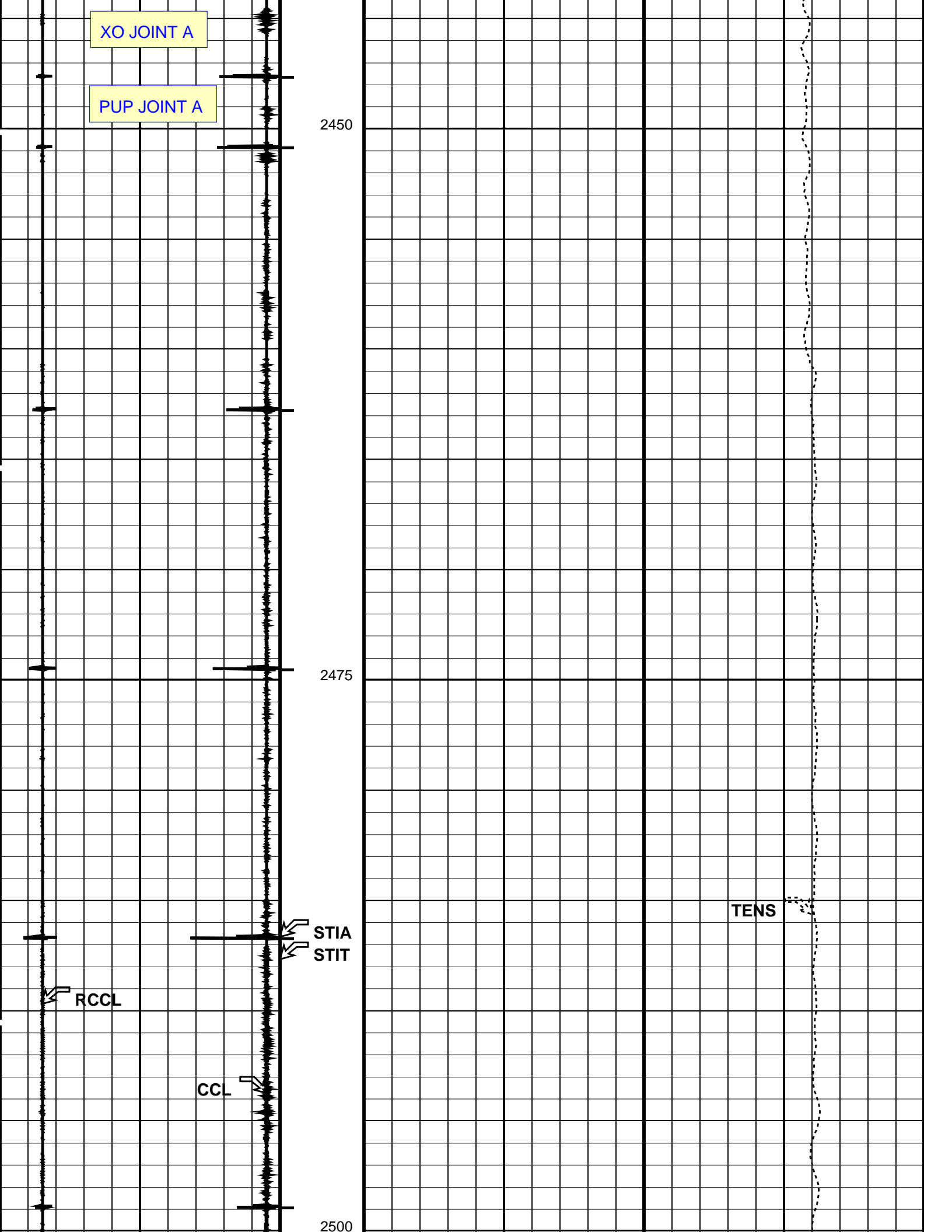
RCCL

CCL

2400

2425





XO JOINT A

PUP JOINT A

2450

2475

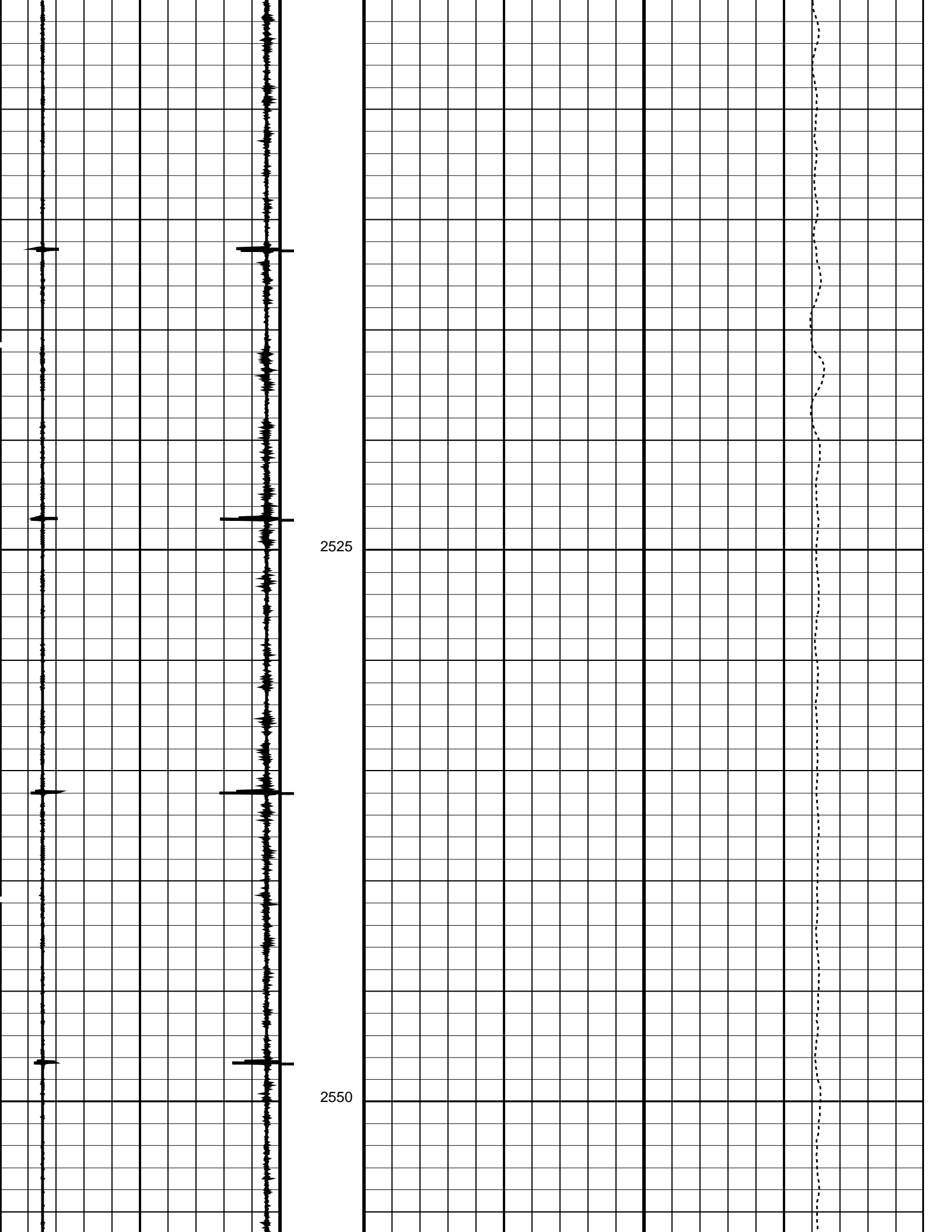
2500

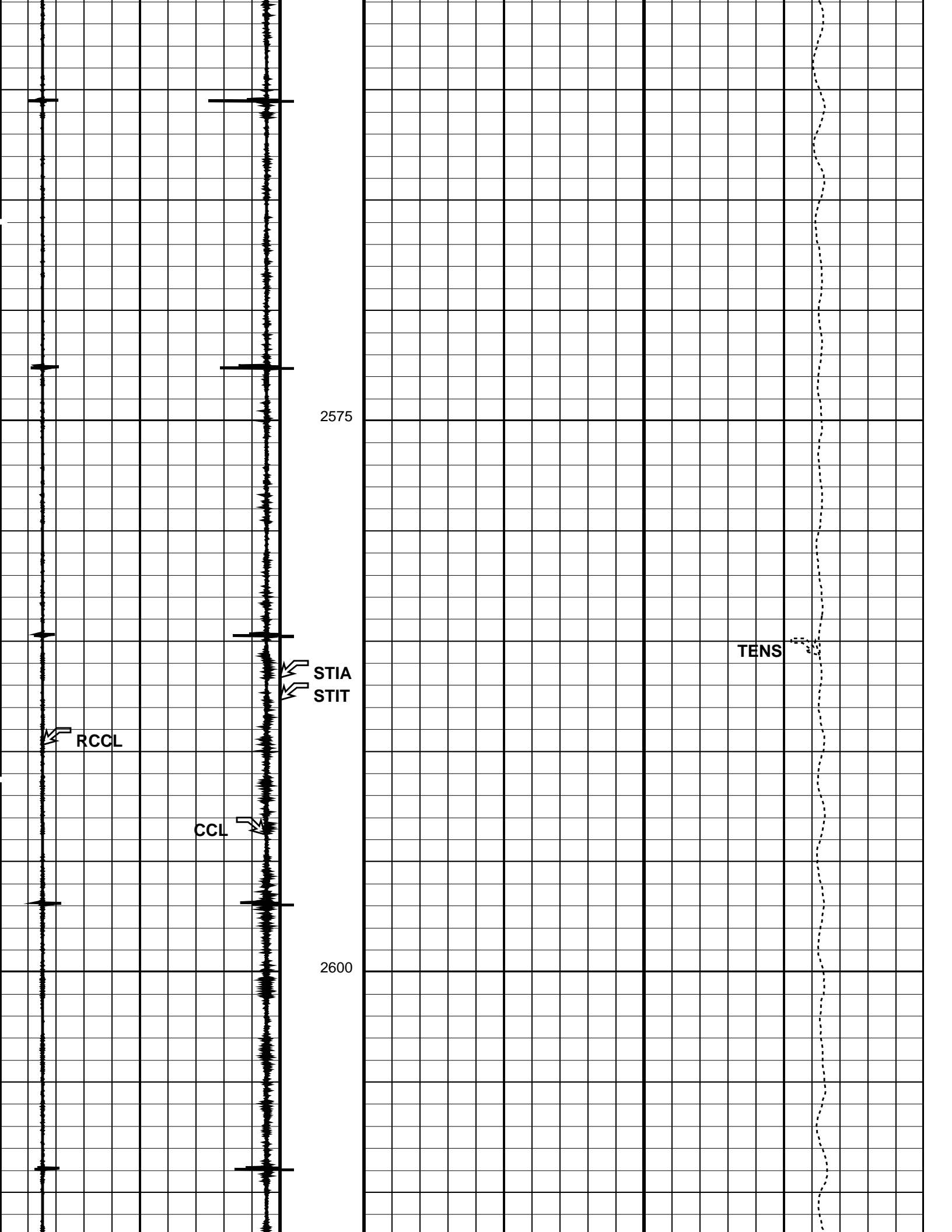
TENS

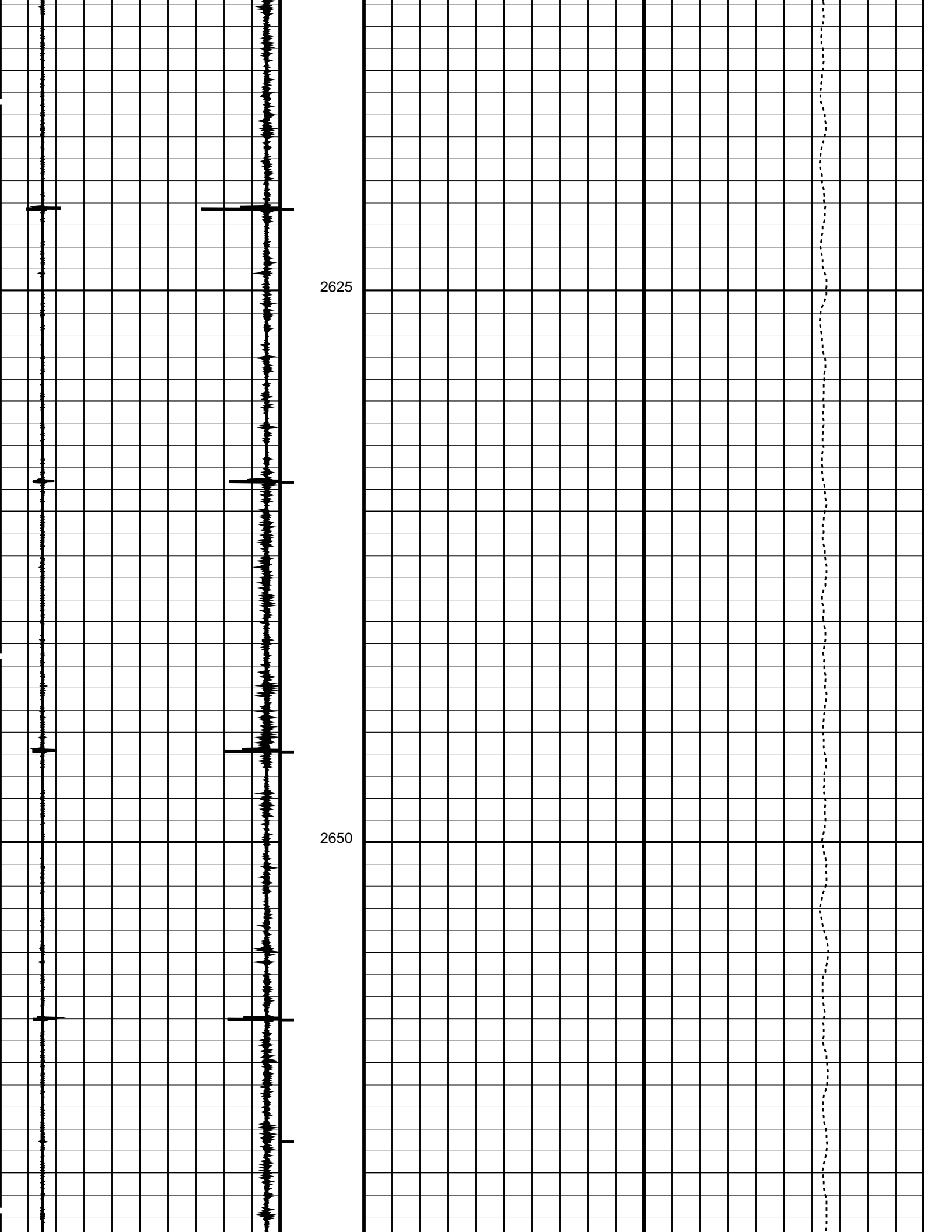
STIA  
STIT

RCCL

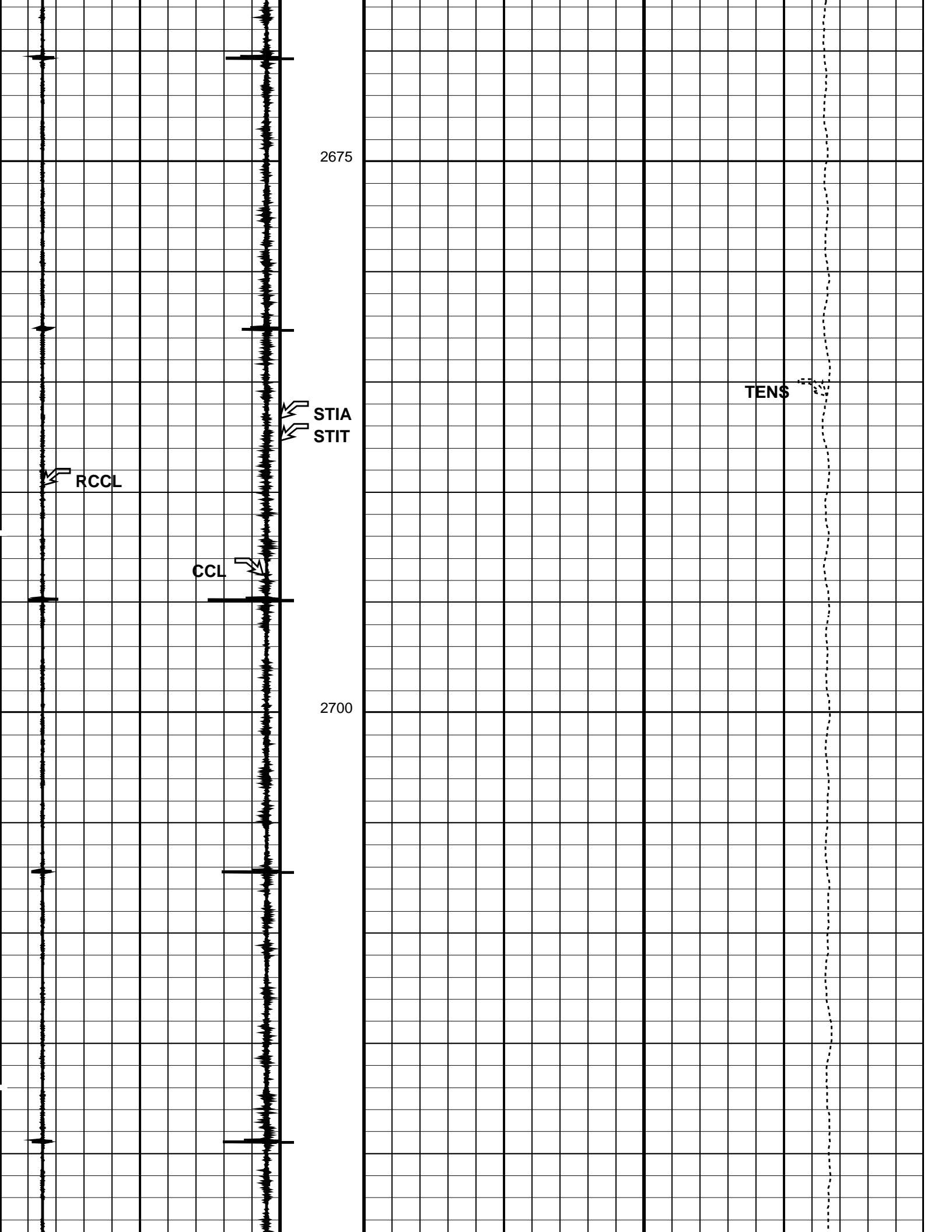
CCL



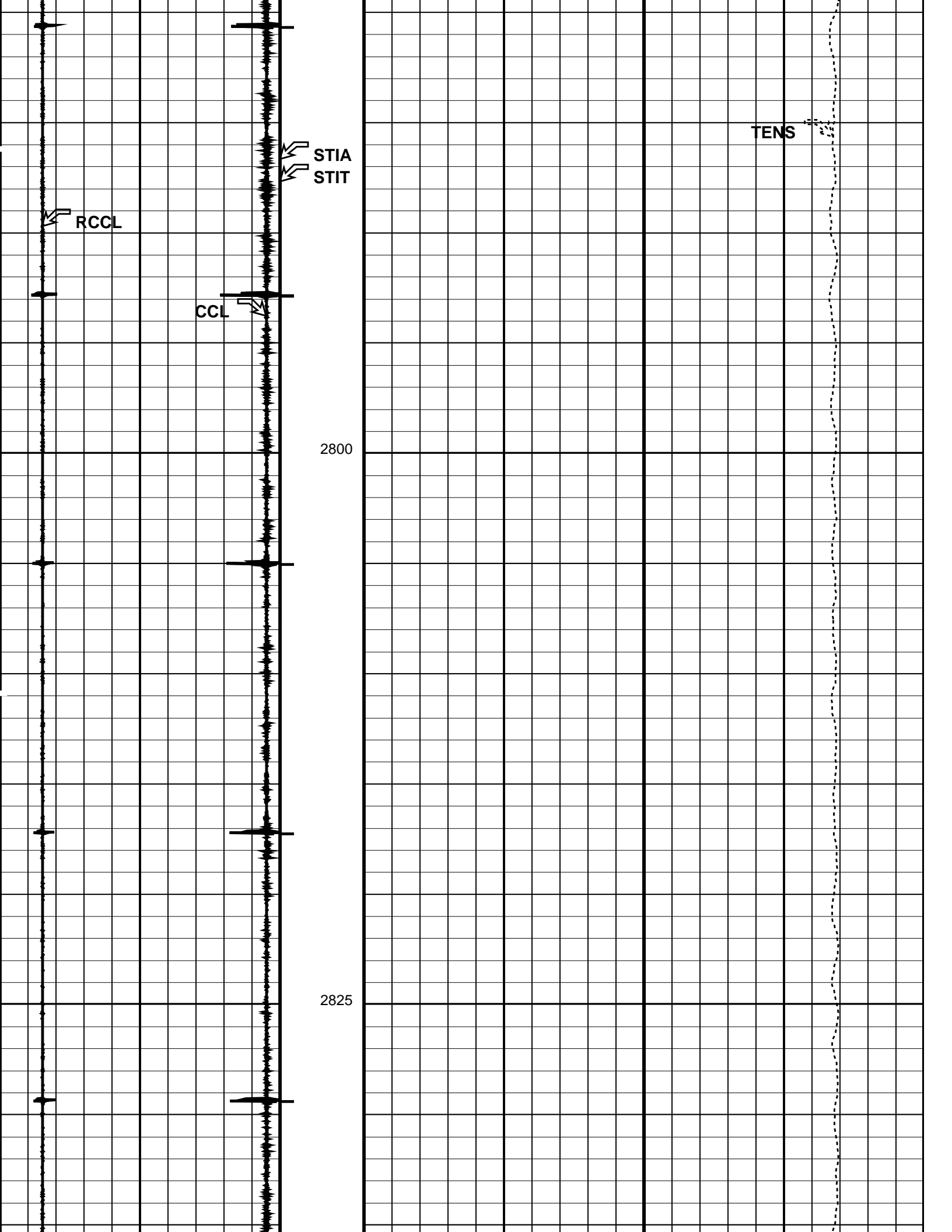


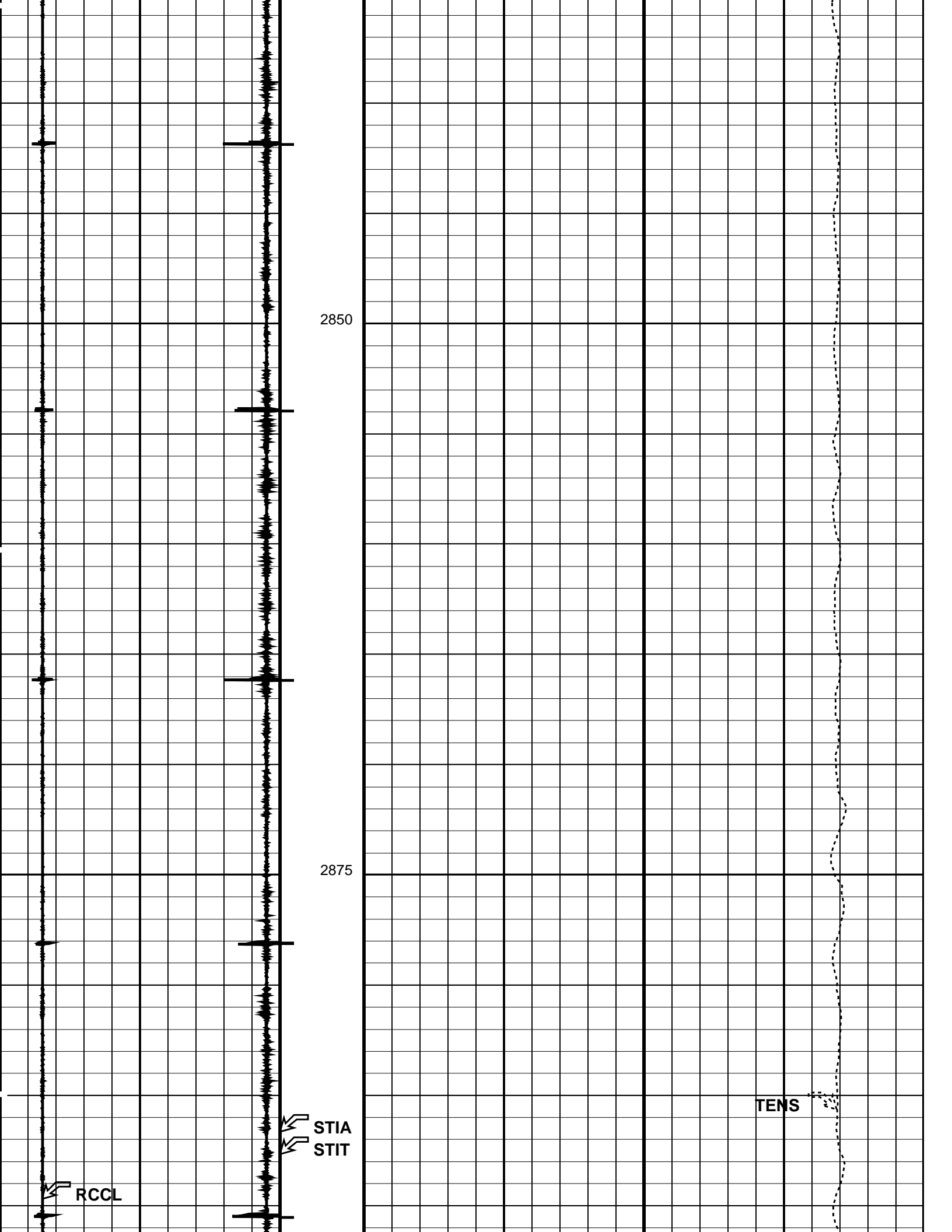












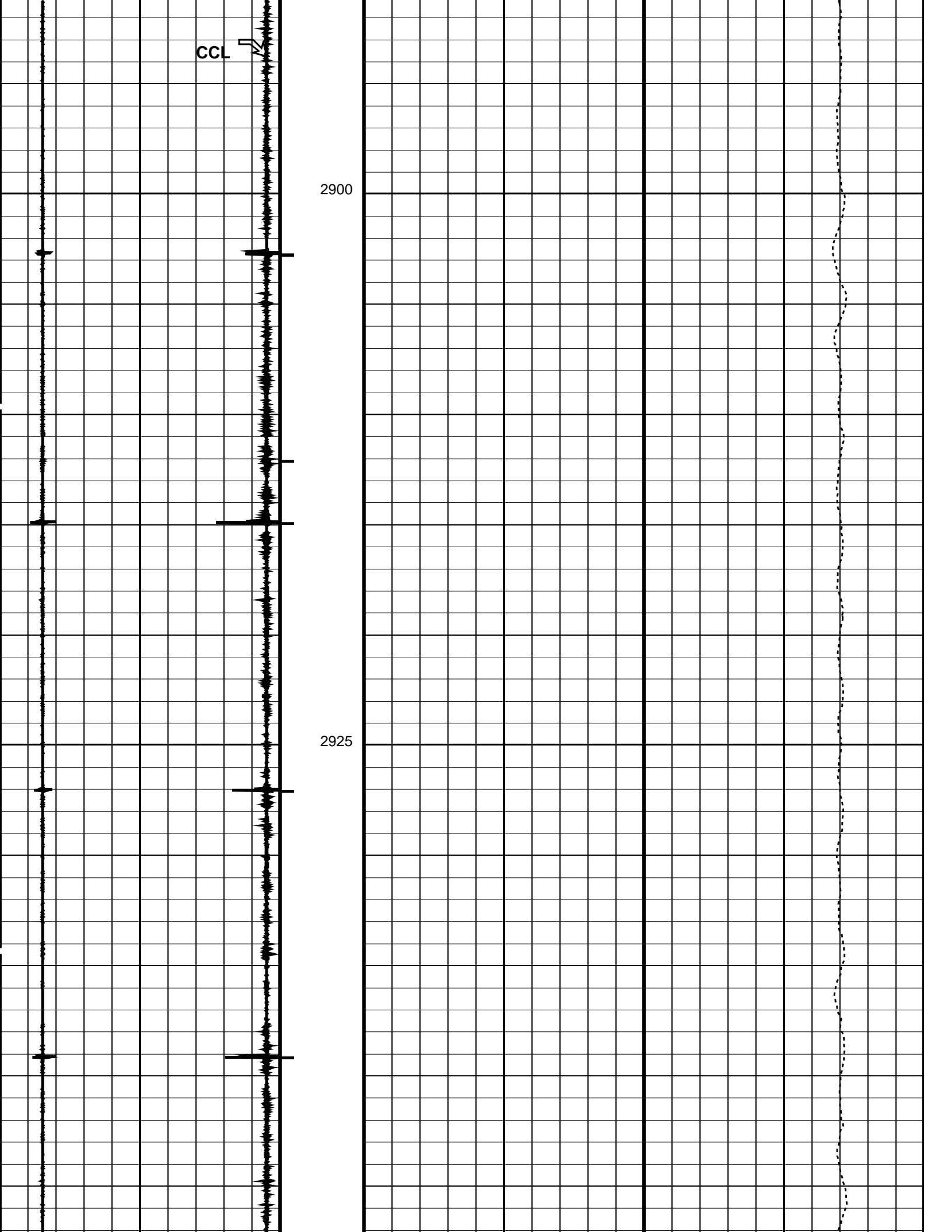
2850

2875

RCCL

STIA  
STIT

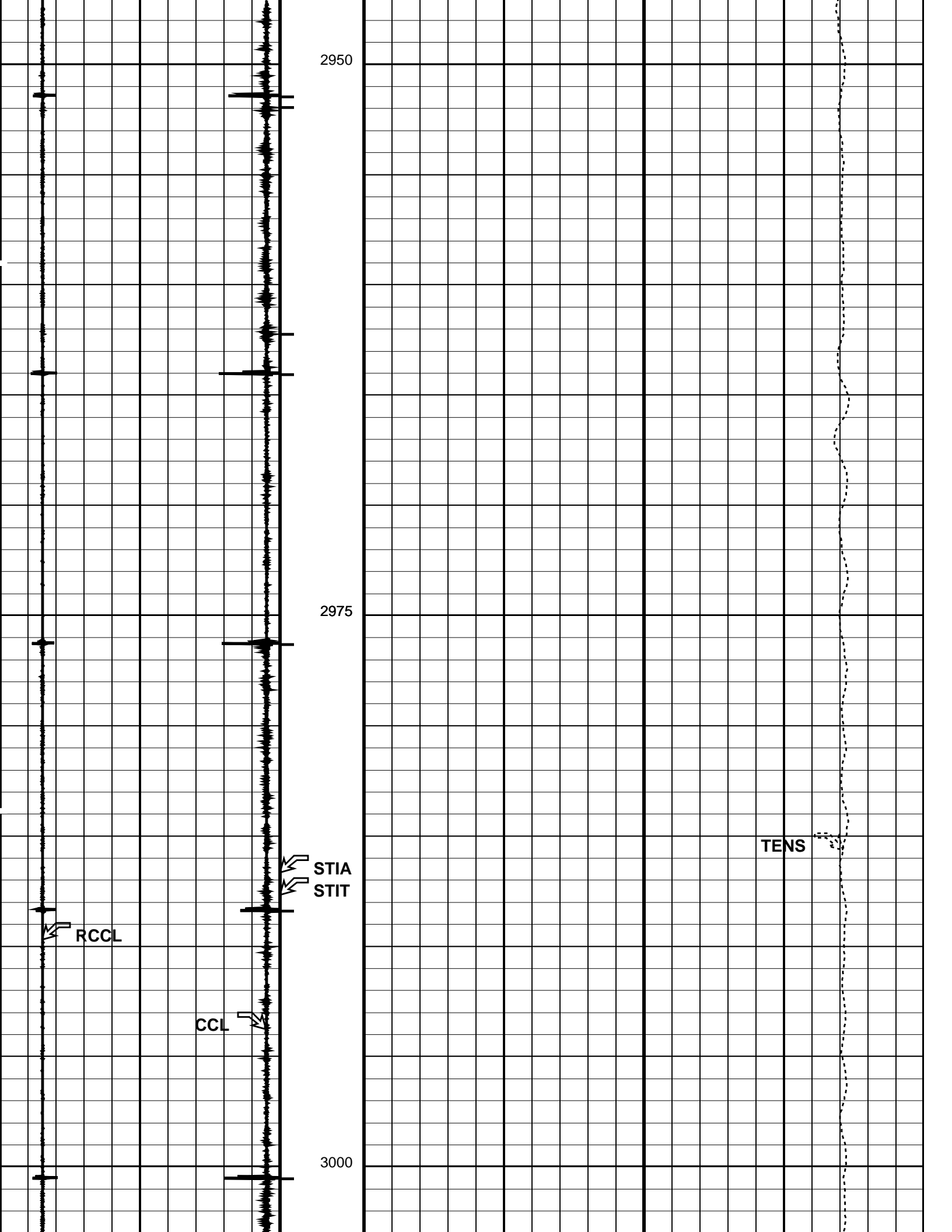
TENS



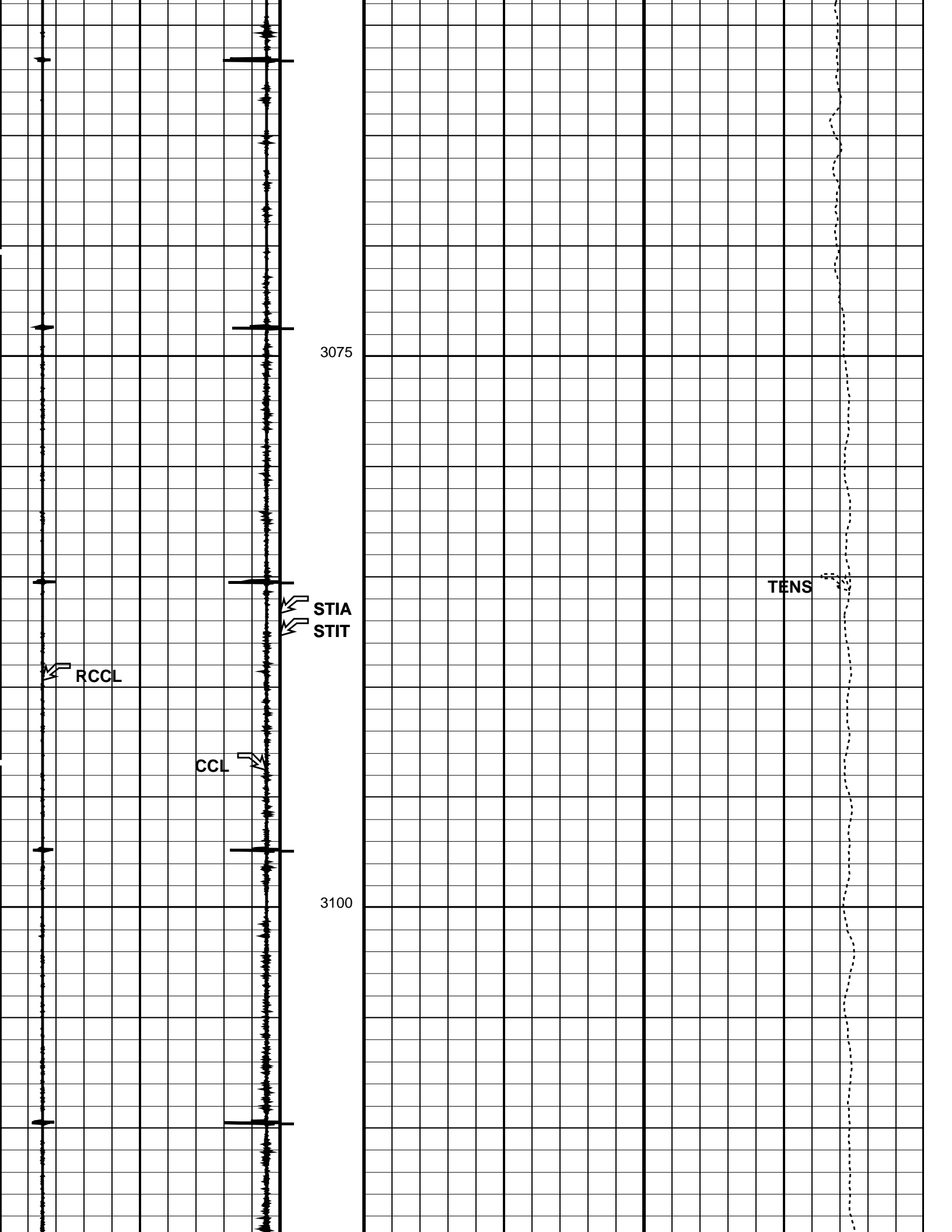
CCL

2900

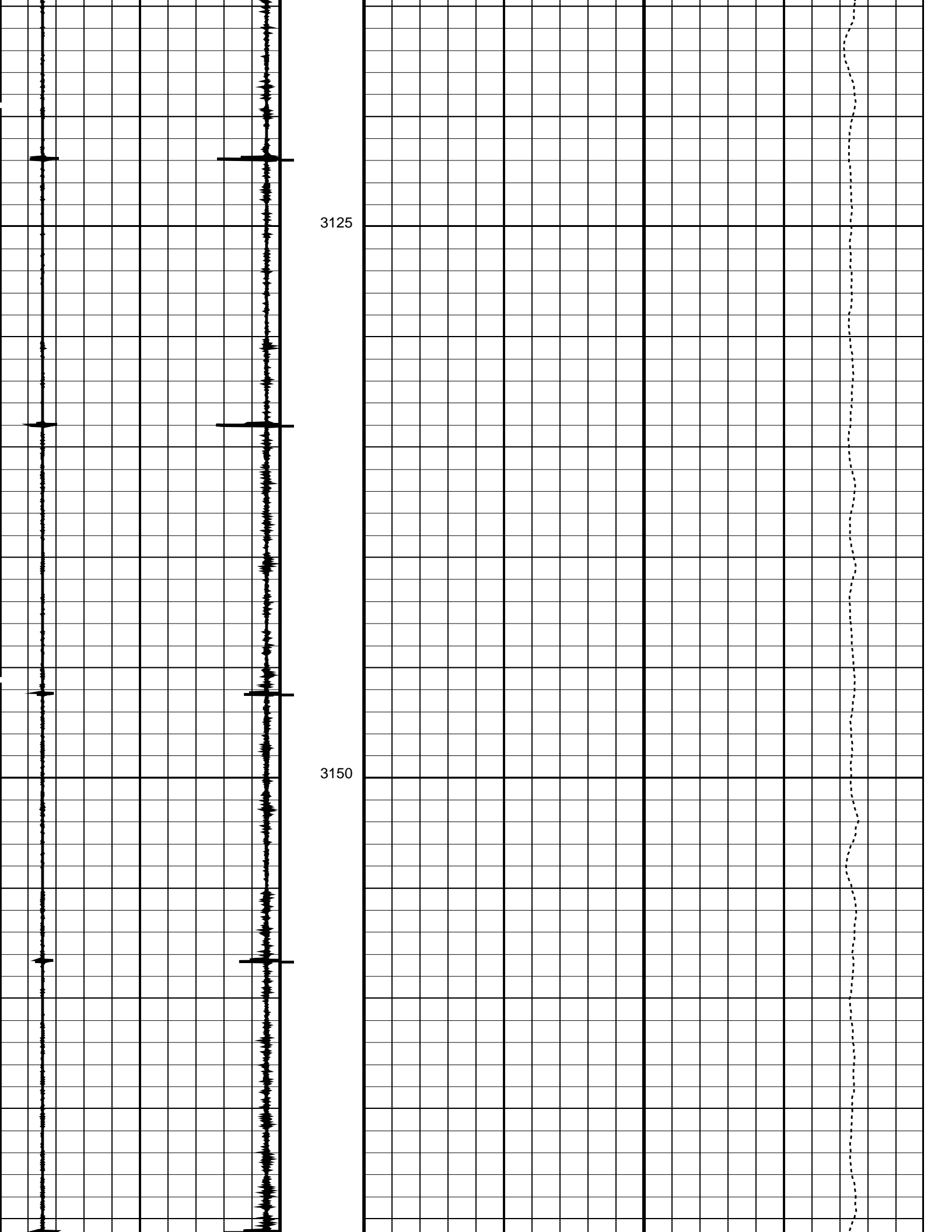
2925

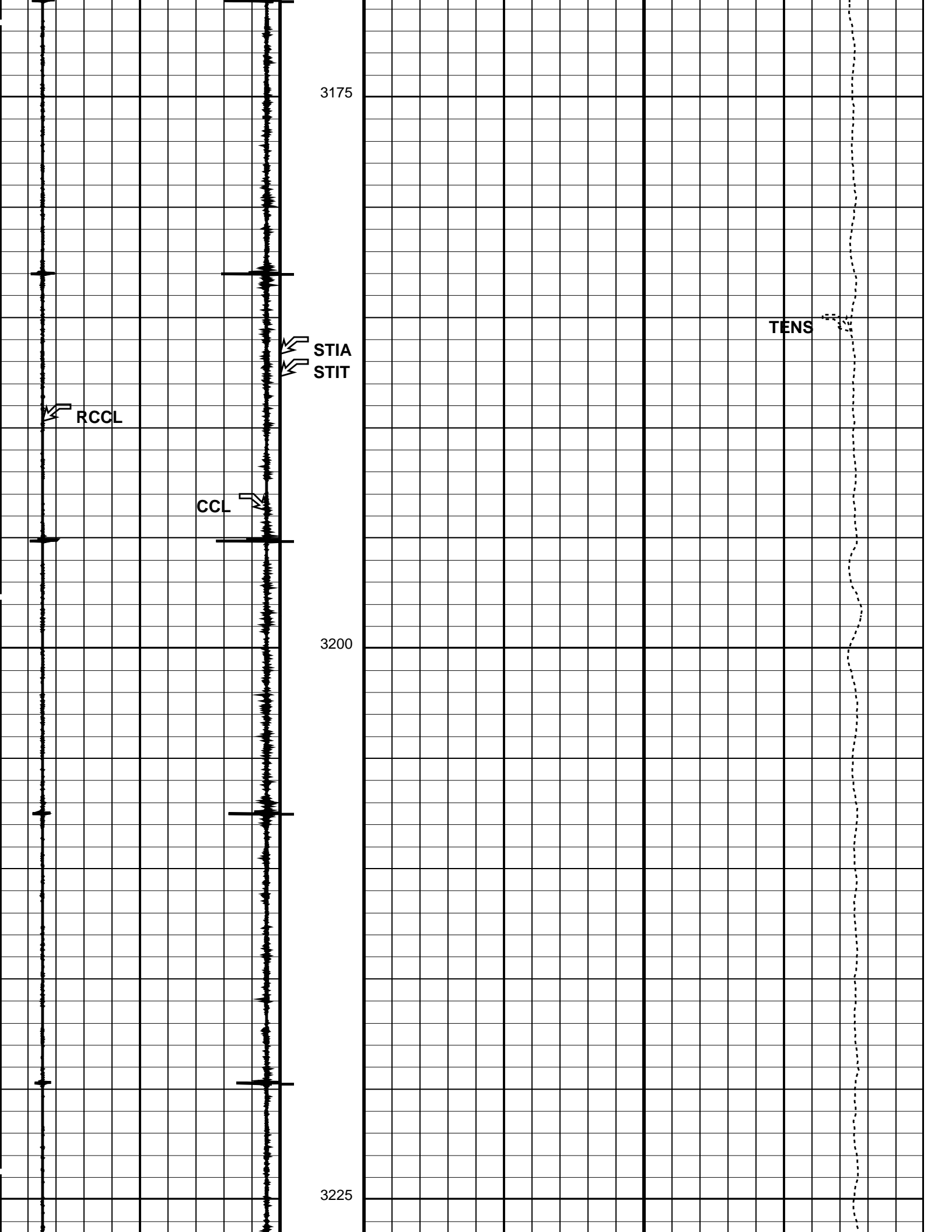












3175

3200

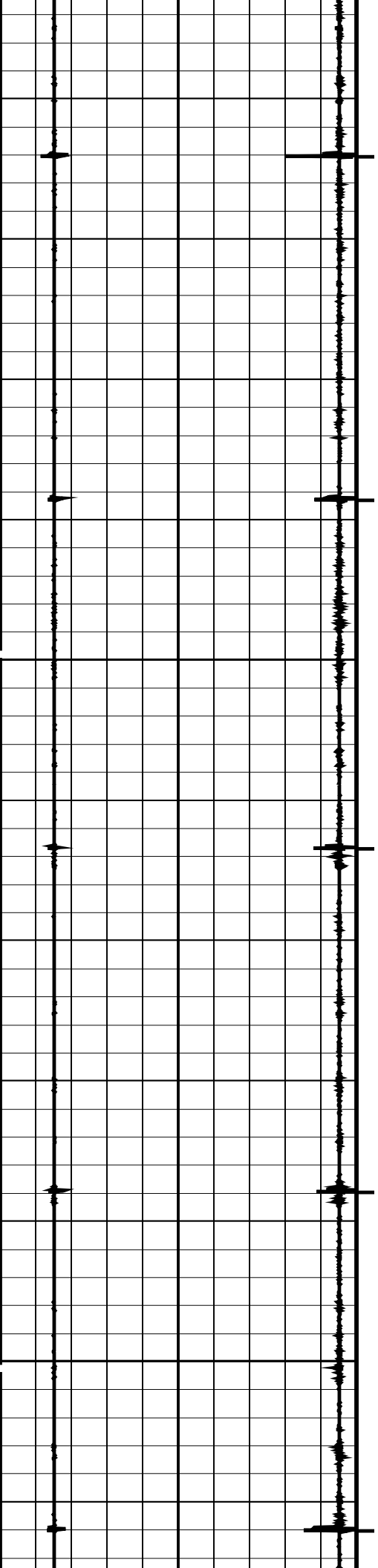
3225

RCCL

CCL

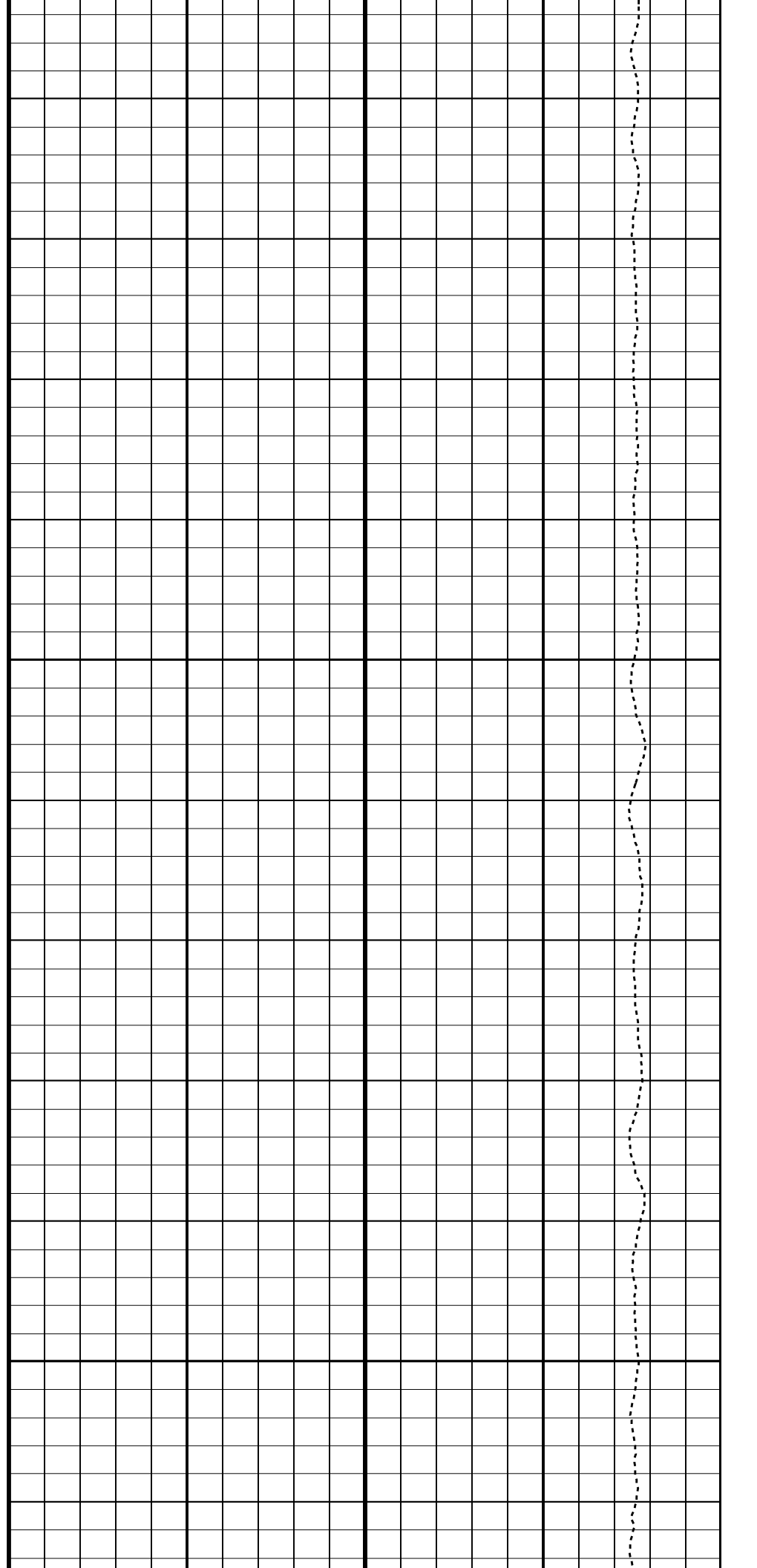
STIA  
STIT

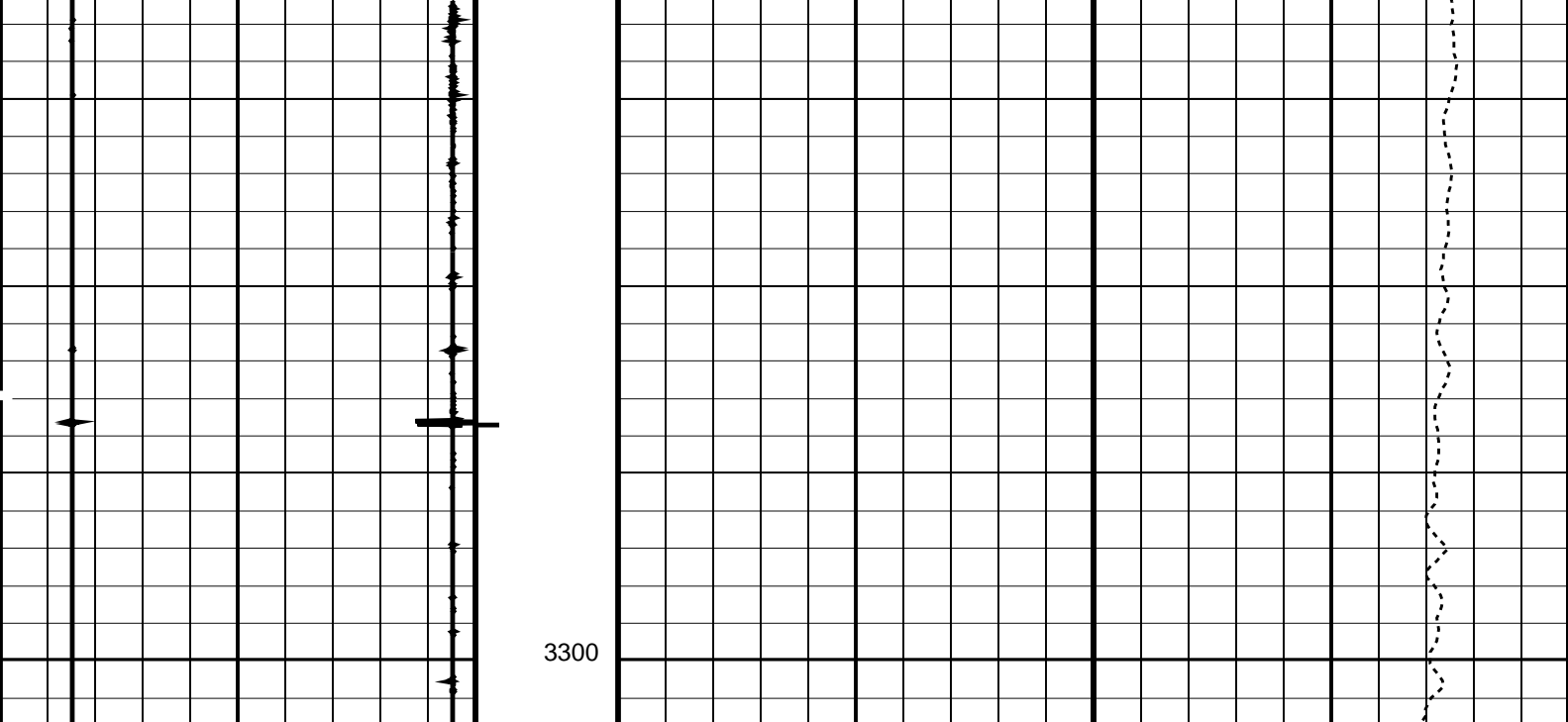
TENS



3250

3275





<b>Casing Collar Locator (CCL)</b>	Stuck Stretch (STIT)	Tension (TENS)
-19 (----) 1	0 (M) 20	0 (LBF) 5000
<b>Raw Casing Collar Locator (RCCL)</b>	Cable Drag From STIA to STIT	
-3 (----) 17	Tool/Tot. Drag From D3T to STIA	

**PIP SUMMARY**

← Casing Collars

Time Mark Every 60 S

**Parameters**

DLIS Name	Description	Value
<b>CAL-B: Casing Collar Locator</b>		
CCLD	CCL reset delay	12 IN
CCLT	CCL Detection Level	0.3 V
<b>STI: Stuck Tool Indicator</b>		
LBFR	Trigger for MAXIS First Reading Label	TDL
STKT	STI Stuck Threshold	0.762 M
TDD	Total Depth - Driller	3648.72 M
TDL	Total Depth - Logger	3300.00 M
<b>System and Miscellaneous</b>		
DO	Depth Offset for Playback	1.8 M
PP	Playback Processing	NORMAL

Format: CCLLog Vertical Scale: 1:200

Graphics File Created: 24-Jul-2009 03:33

**OP System Version: 17C0-154**

CAL-B 17C0-154

**Input DLIS Files**

DEFAULT CCL\_103LUP FN:255 PRODUCER 24-Jul-2009 02:26 3299.9 M 2064.4 M

**Output DLIS Files**

Company: **CDEX**

**Schlumberger**

Well: **C0009A**

Field: **Kumanonada, Offshore Kii peninsula**

Rig: **Chikyu**

Country: **JAPAN**

Junk Catcher (Guage 8-1/4")

3300.0 m- 2079.0 m

Suite 1, Run 4 (1:200)