

NT2-01_GeoVISION Resistivity_Image_RM_MD200_Reelog Spliced

File ID: CDF_NT2-01

FN: 66 27-Aug-2009 16:39

8510.0 FT

10194.0 FT

IDEAL Version: ID14_OC_12 IDF

Format: NT1-07_Image_RM_MD200

Vertical Scale: 1:200

Graphics File Created: 06-Sep-2009 17:35

Parameters

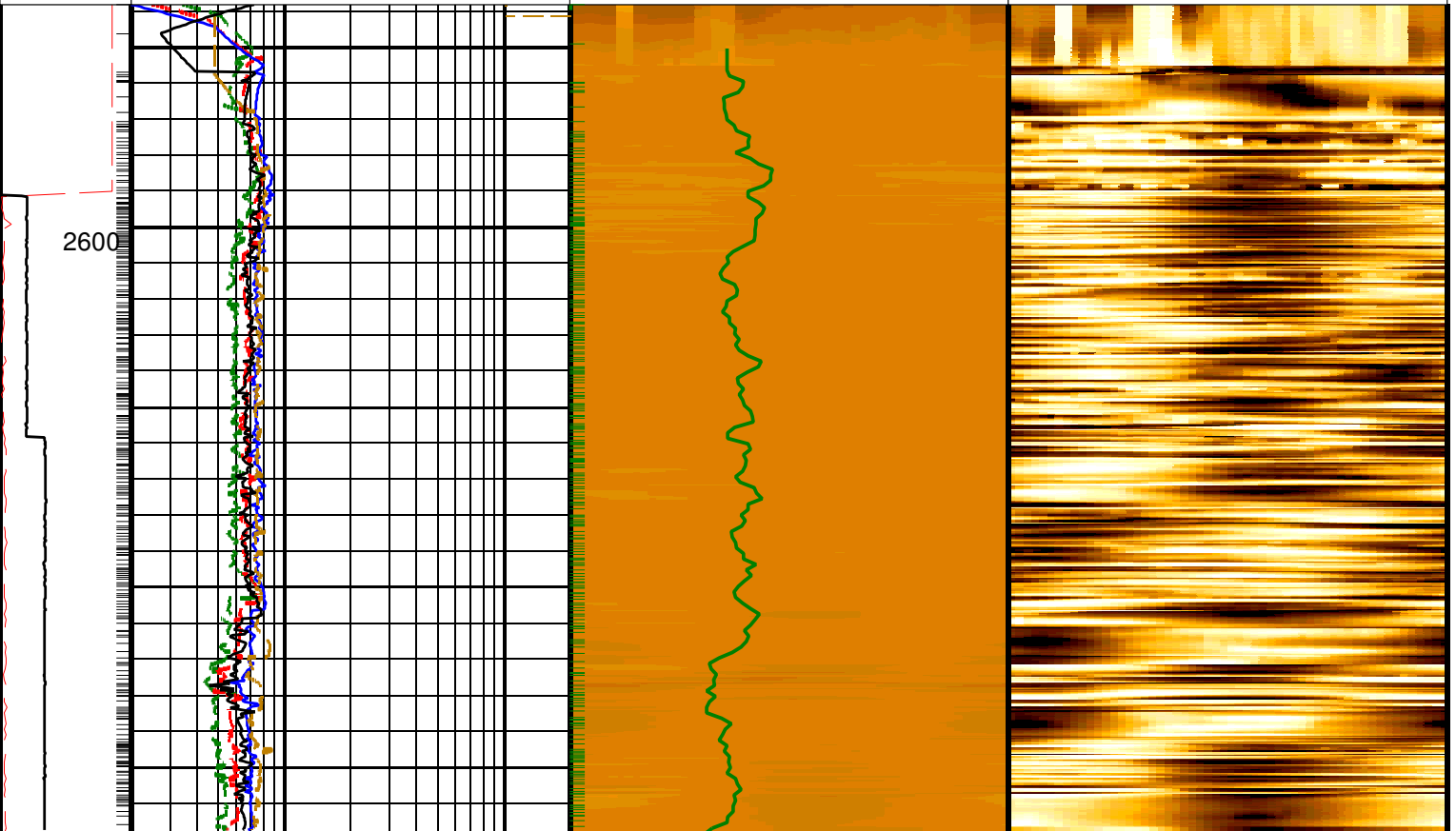
DLIS Name	Description	Value
DO	Depth Offset	0.0 m

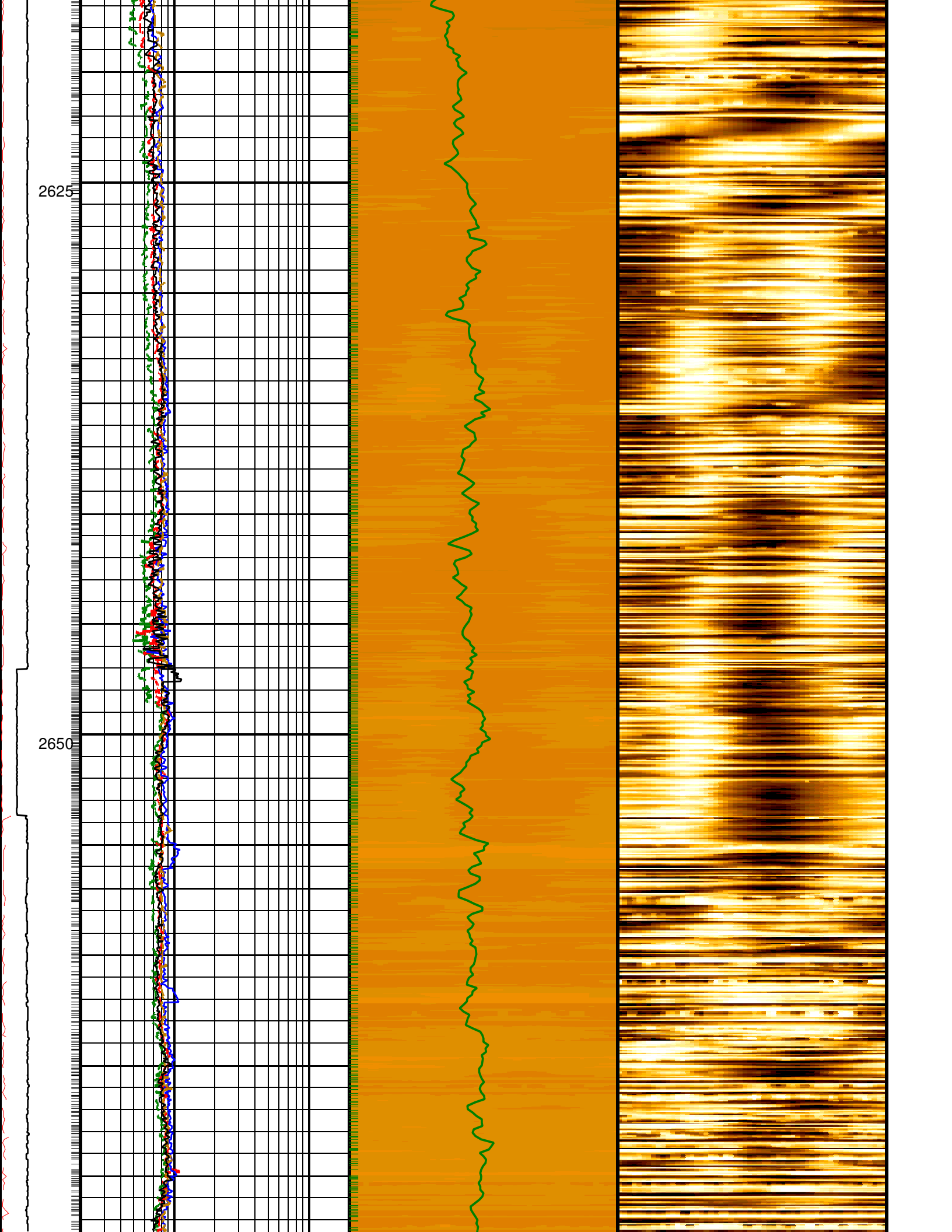
PIP SUMMARY

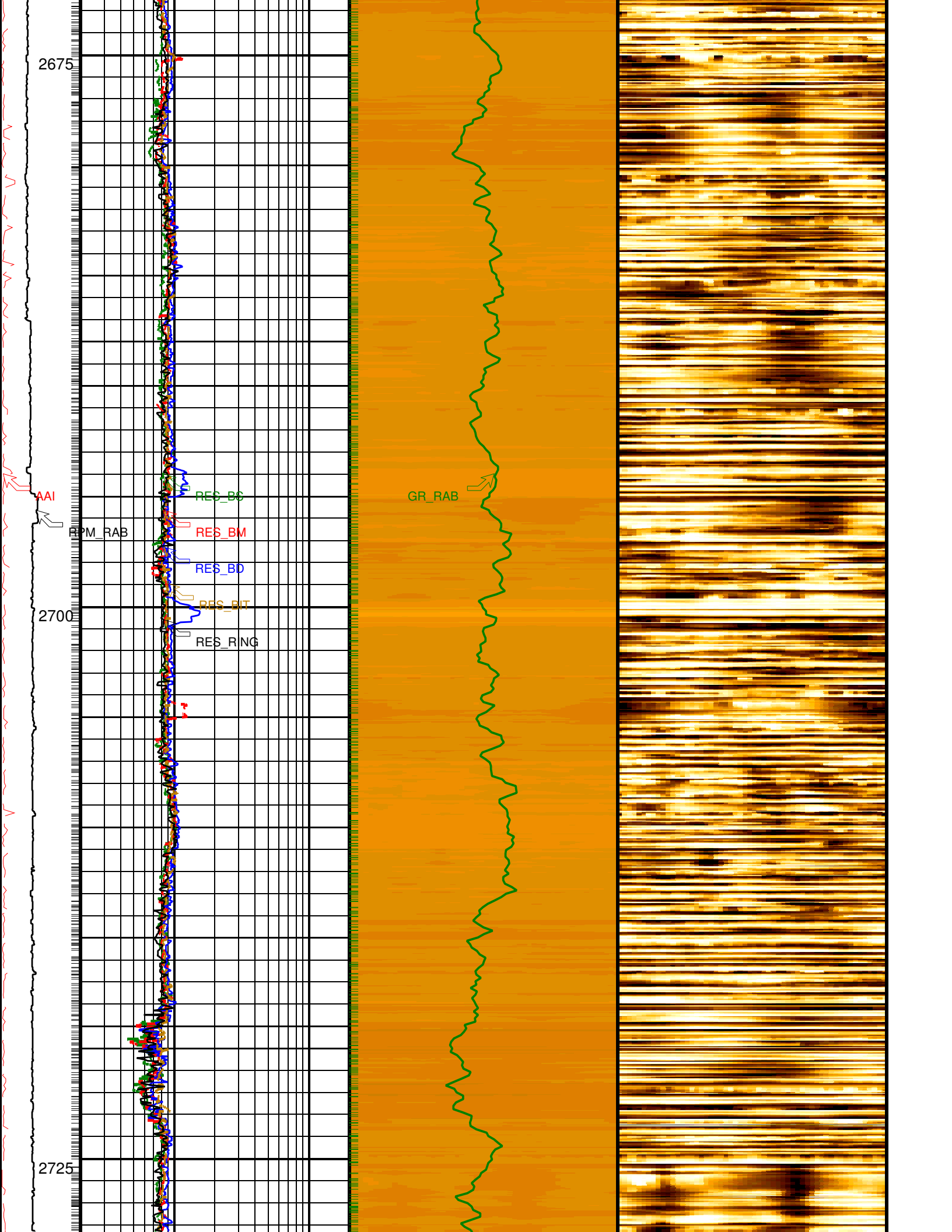
└ Ring Samples

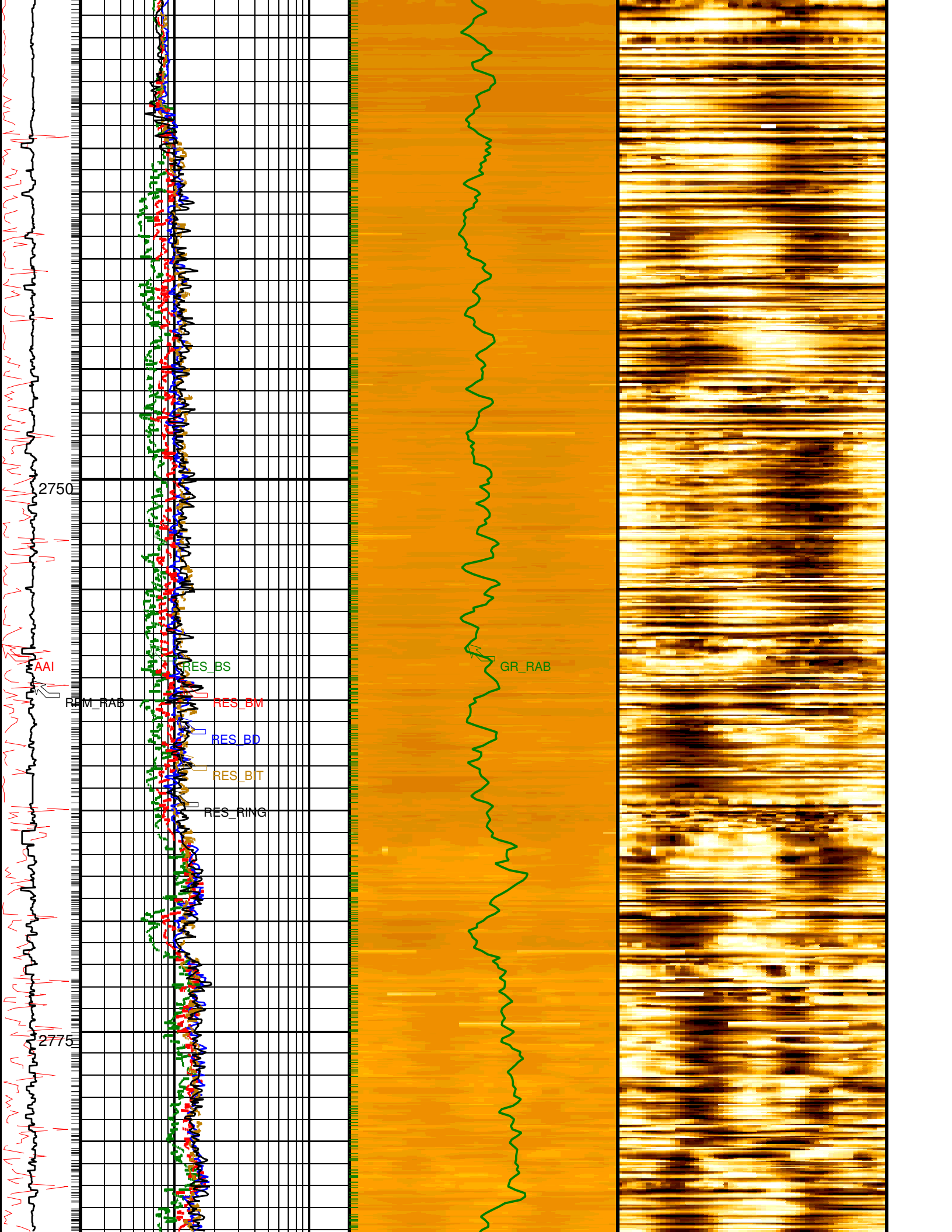
└ Gamma Ray Samples

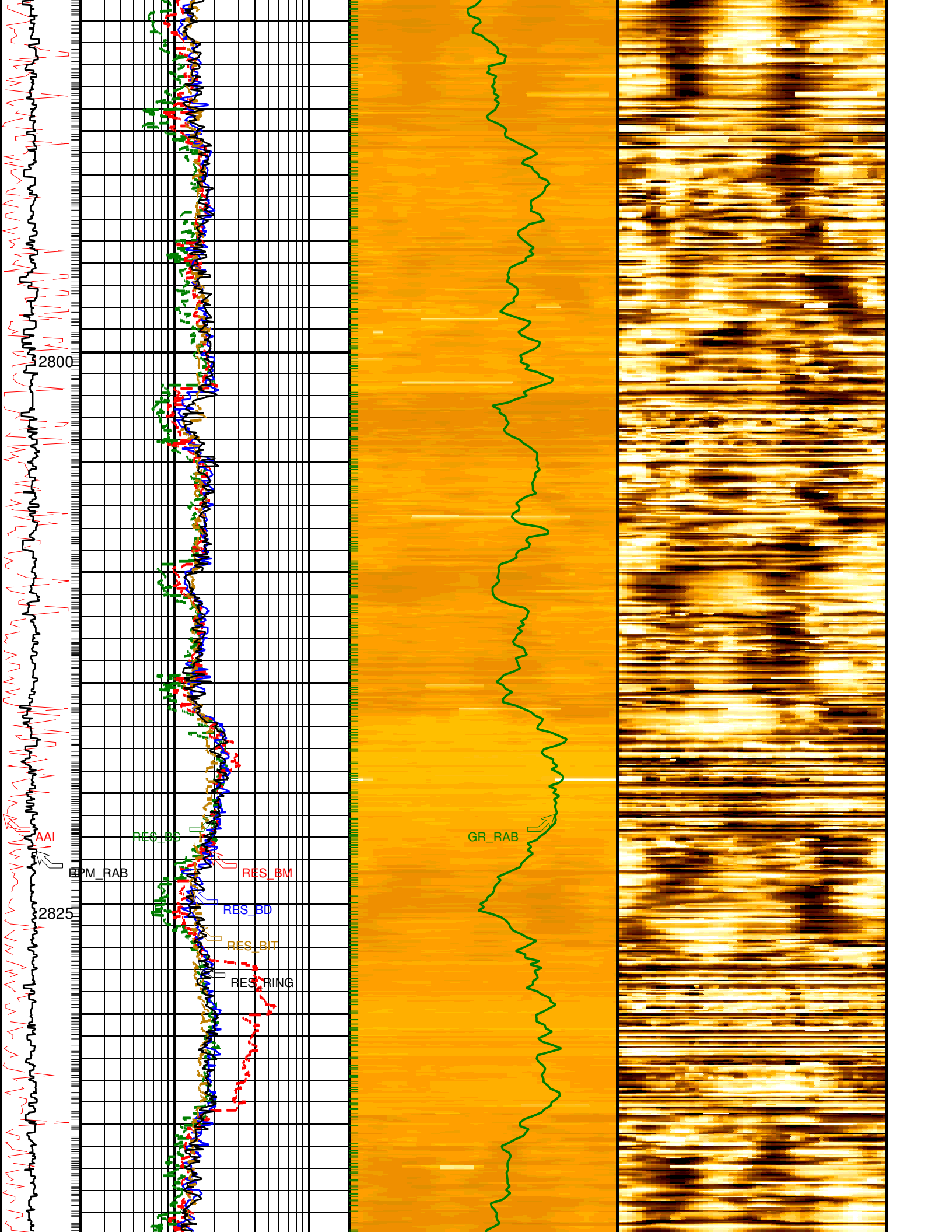
	<p>Ring Resistivity (RES_RING)</p> <p>0.2 (OHMM) 20</p> <hr/> <p>Bit Resistivity (RES_BIT)</p> <p>0.2 (OHMM) 20</p> <hr/> <p>Deep Button Resistivity (RES_BD)</p> <p>0.2 (OHMM) 20</p>		
<p>RAB Rotational Speed (RPM_RAB) (RPM)</p> <p>0 300</p>	<p>Medium Button Resistivity (RES_BM)</p> <p>0.2 (OHMM) 20</p>	<p style="text-align: center;">Deep Button Image (R3IM_HI) (OHMM)</p>	
<p>Angular Acceleration Indicator (AAI) (----)</p> <p>0 300</p>	<p>Shallow Button Resistivity (RES_BS)</p> <p>0.2 (OHMM) 20</p>	<p>RAB Gamma Ray (GR_RAB)</p> <p>0 (GAPI) 150</p>	<p style="text-align: center;">Conductive Resistive (R3IM_DYN HI) (----)</p>

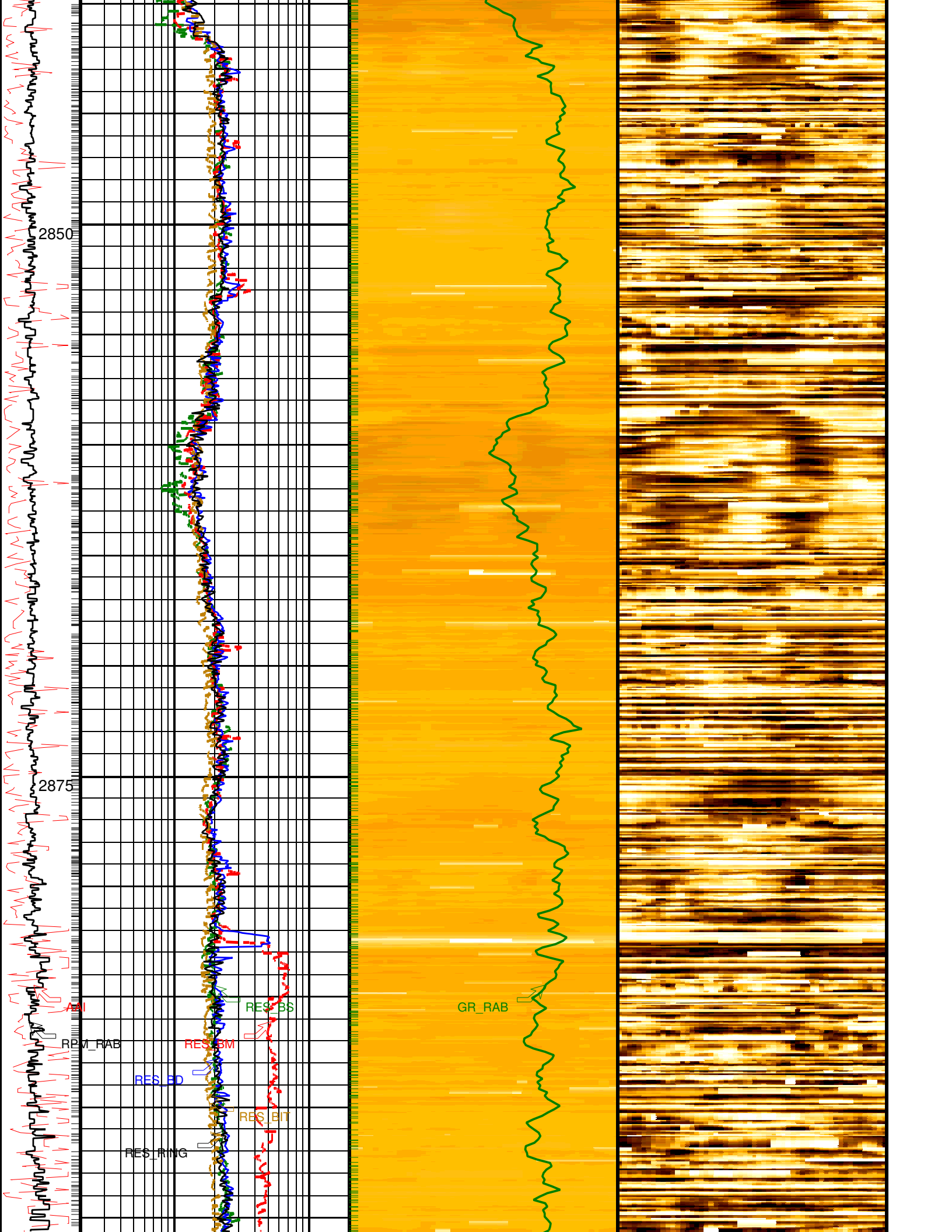


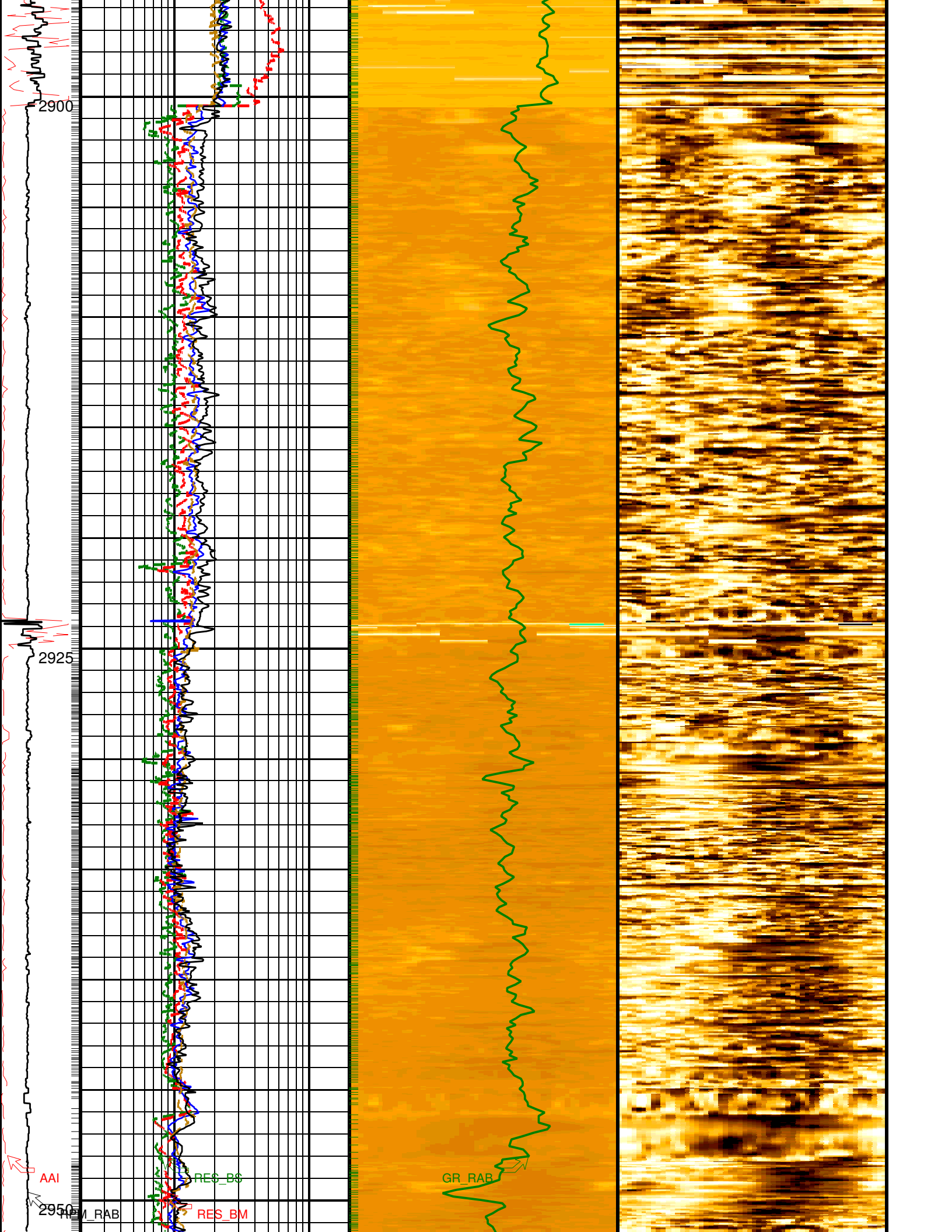


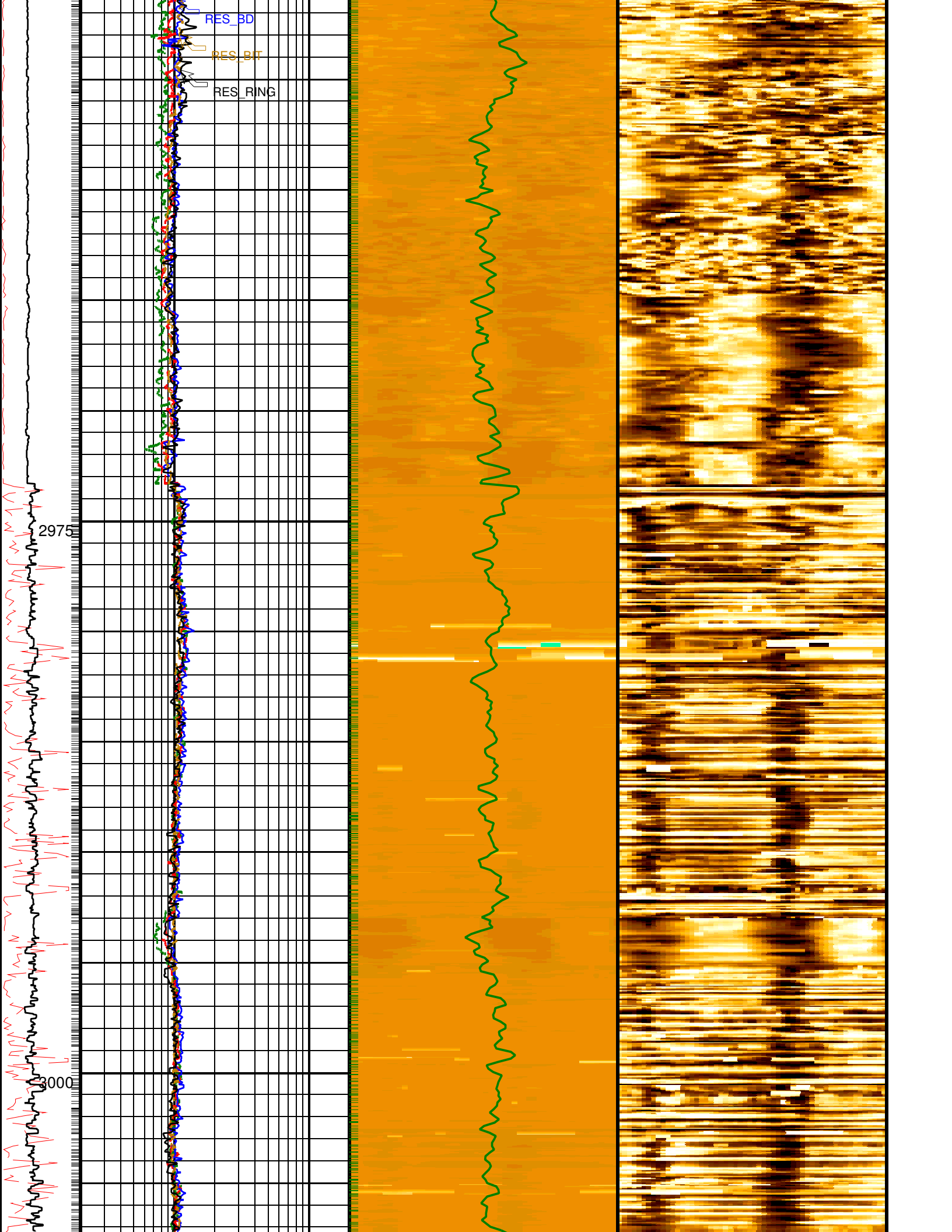


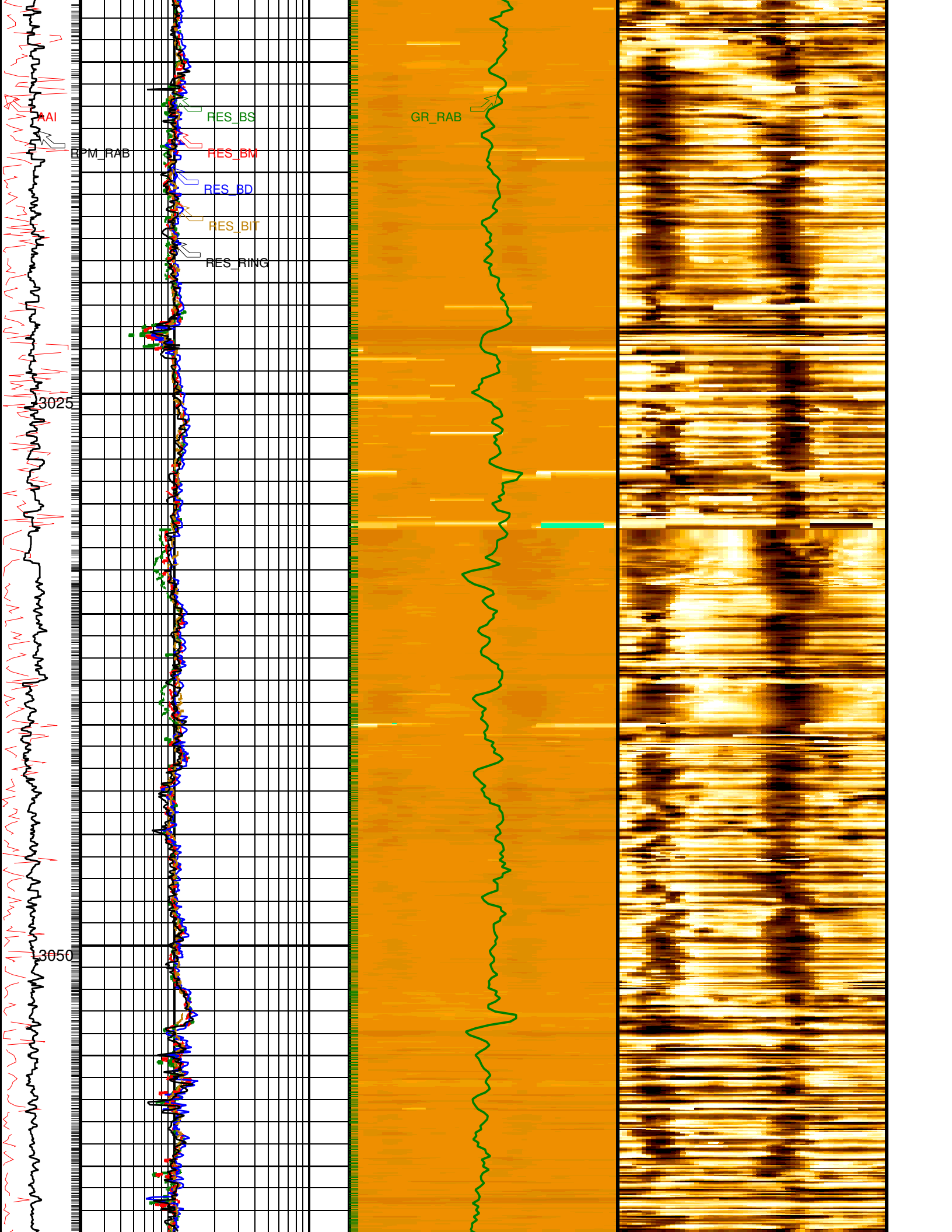


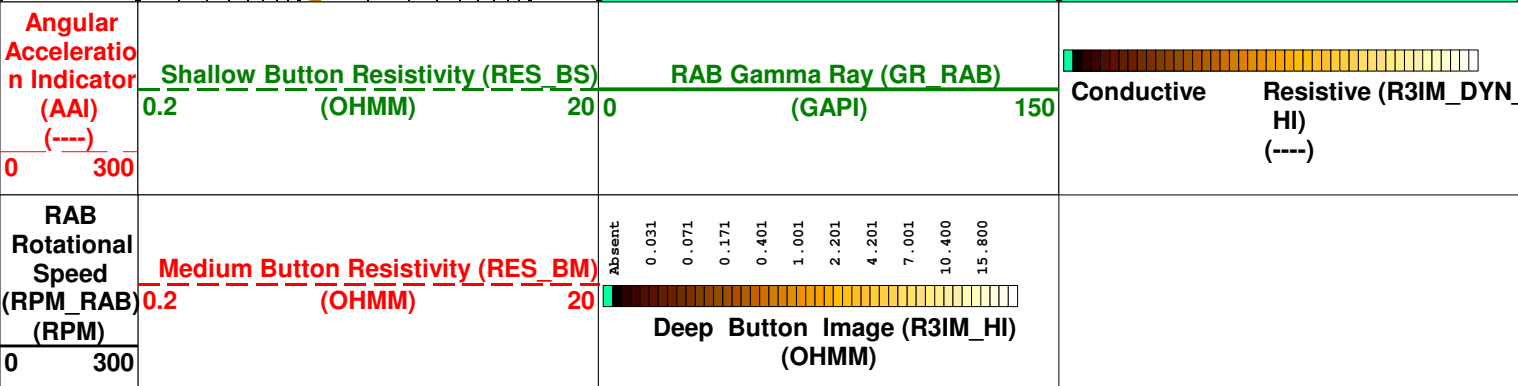
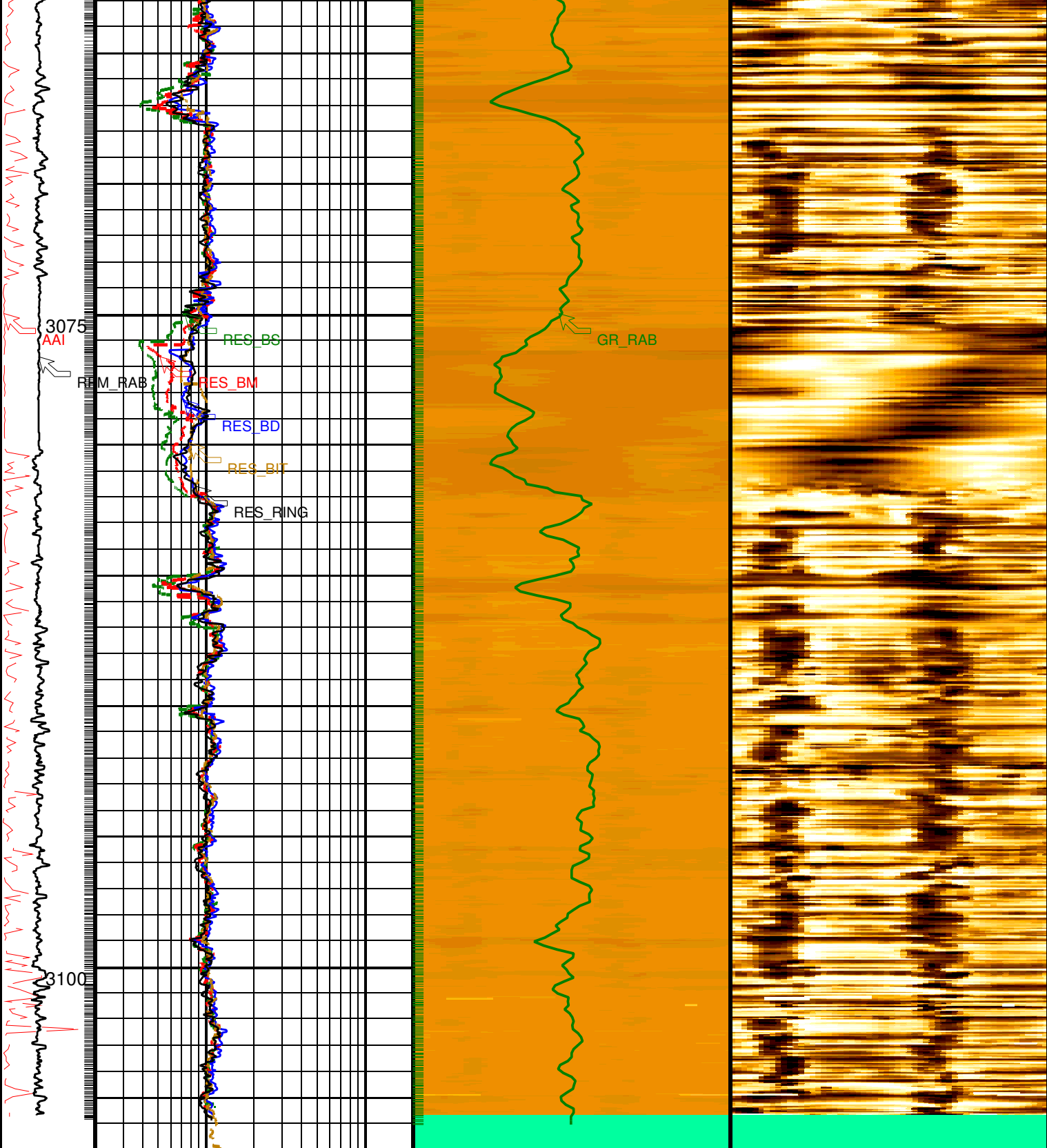












0.2	(OHMM)	20
Bit Resistivity (RES_BIT)		
0.2	(OHMM)	20
Ring Resistivity (RES_RING)		
0.2	(OHMM)	20

PIP SUMMARY

Ring Samples

Gamma Ray Samples

IDEAL Version: ID14_0C_12
IDF

Input DLIS Files

File ID:CDF_NT2-01

FN:66 27-Aug-2009 16:39

8510.0 FT

10194.0 FT