

Input DLIS Files

SAVE

File ID:Run_1

FN:19 03-Sep-2009 15:43

13148.0 FT

16503.0 FT

IDEAL Version: ID14_OC_12 IDF

Format: NT1_07_Geomd200

Vertical Scale: 1:200

Graphics File Created: 04-Sep-2009 14:35

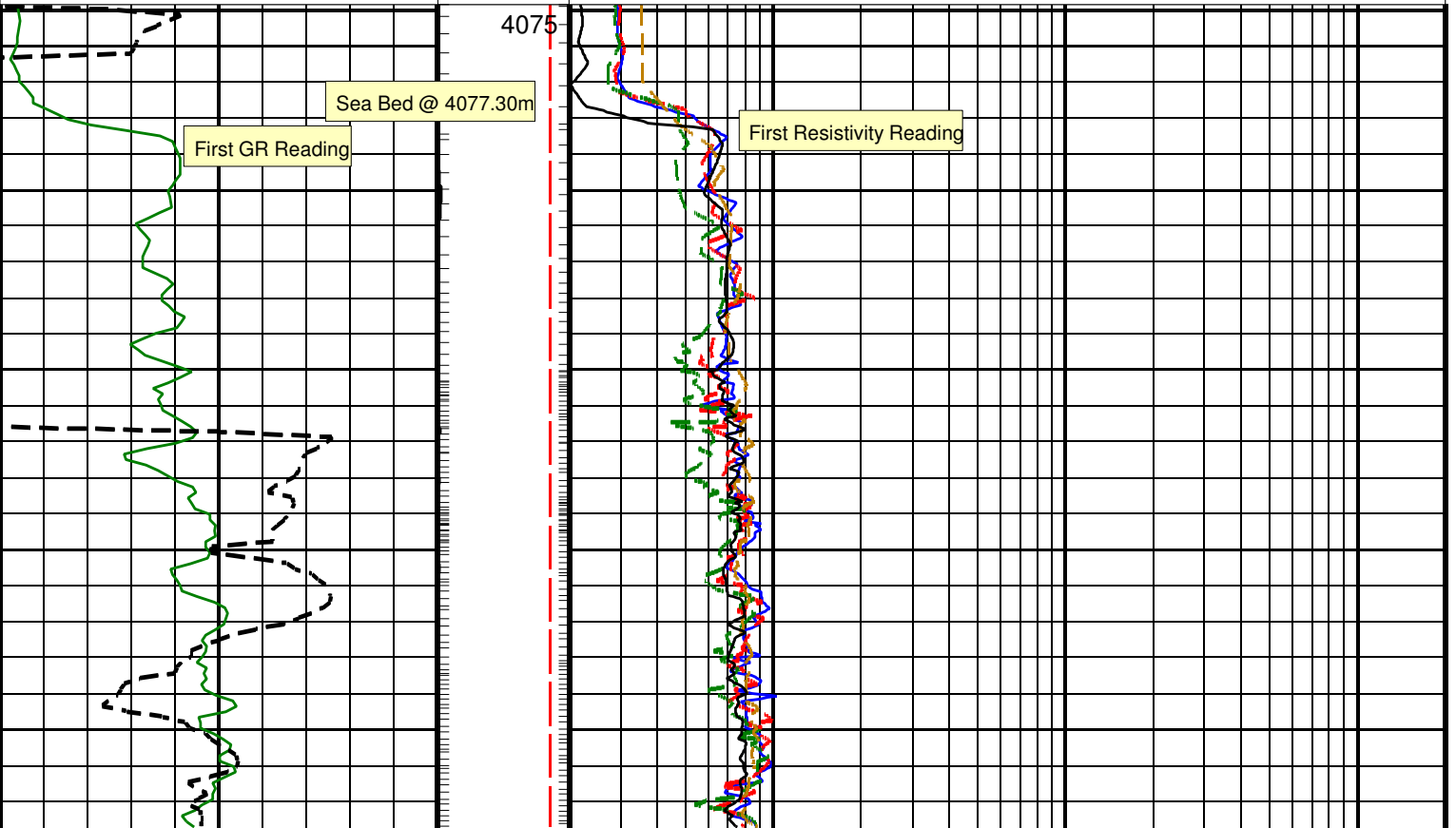
Parameters

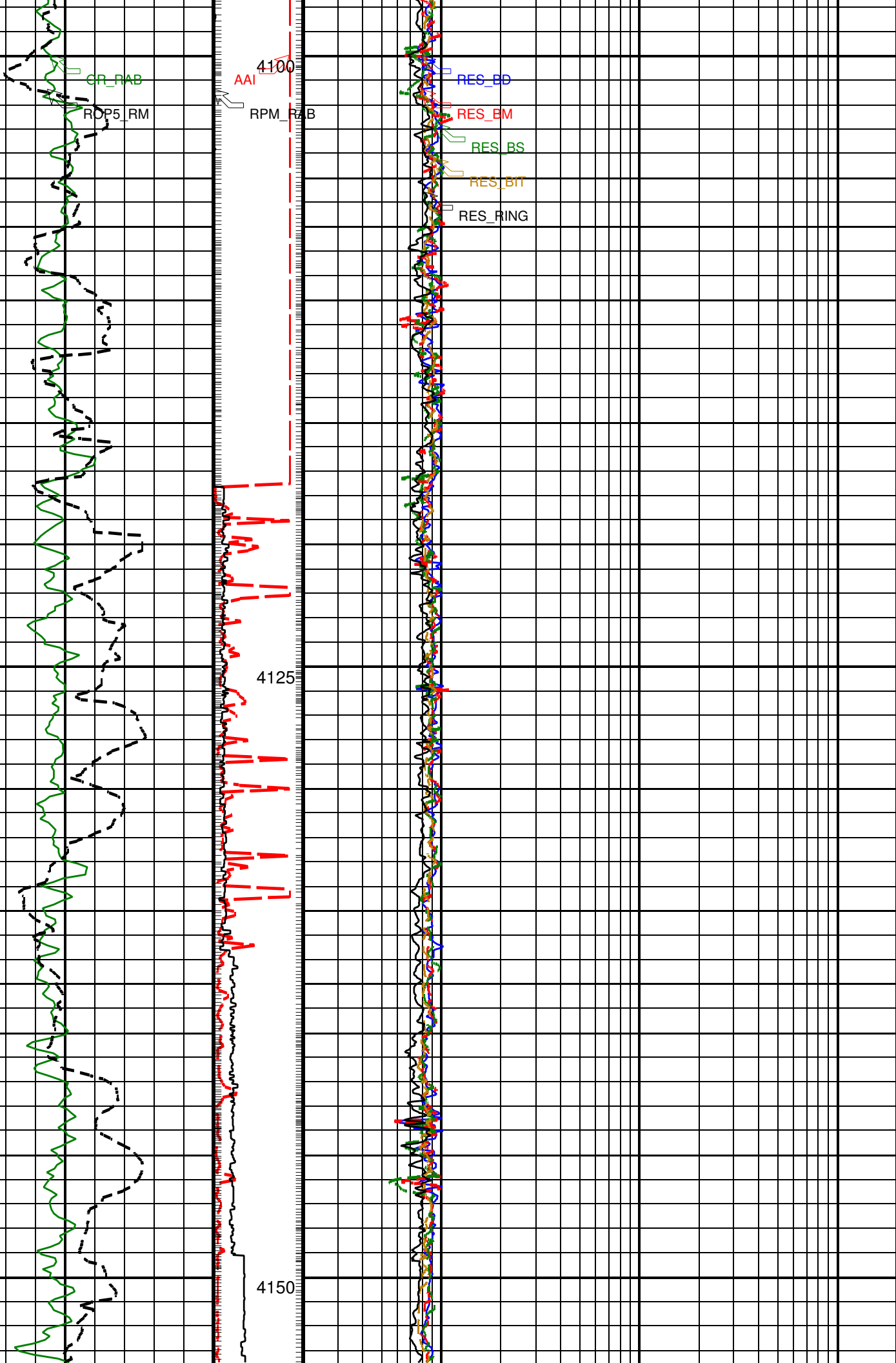
DLIS Name	Description	Value
DO	Depth Offset	0.0 m

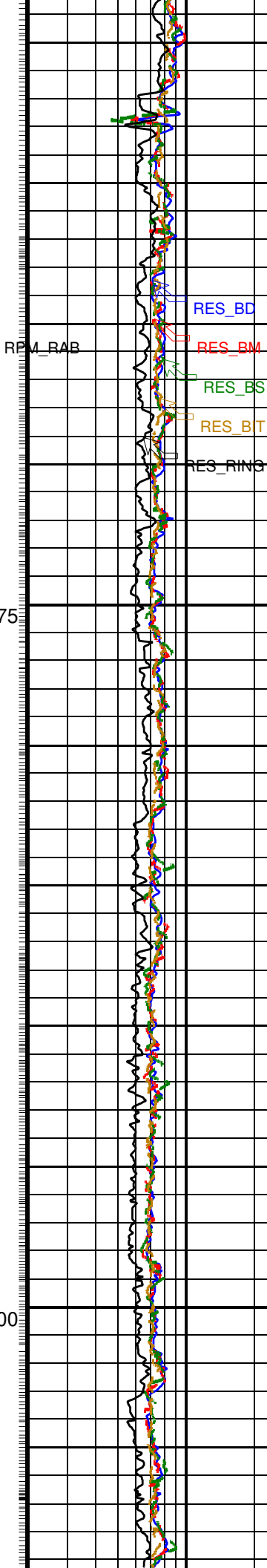
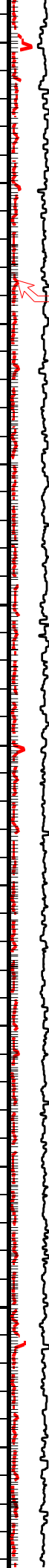
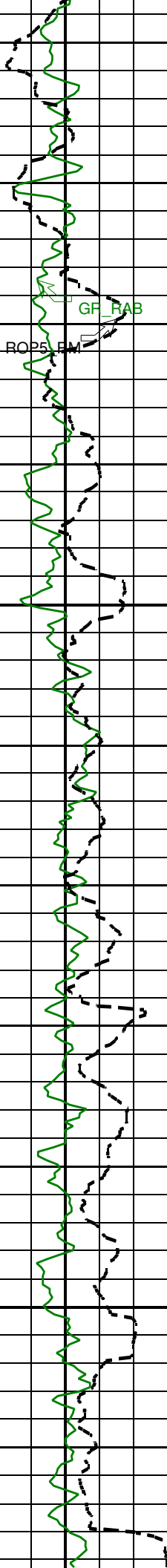
PIP SUMMARY

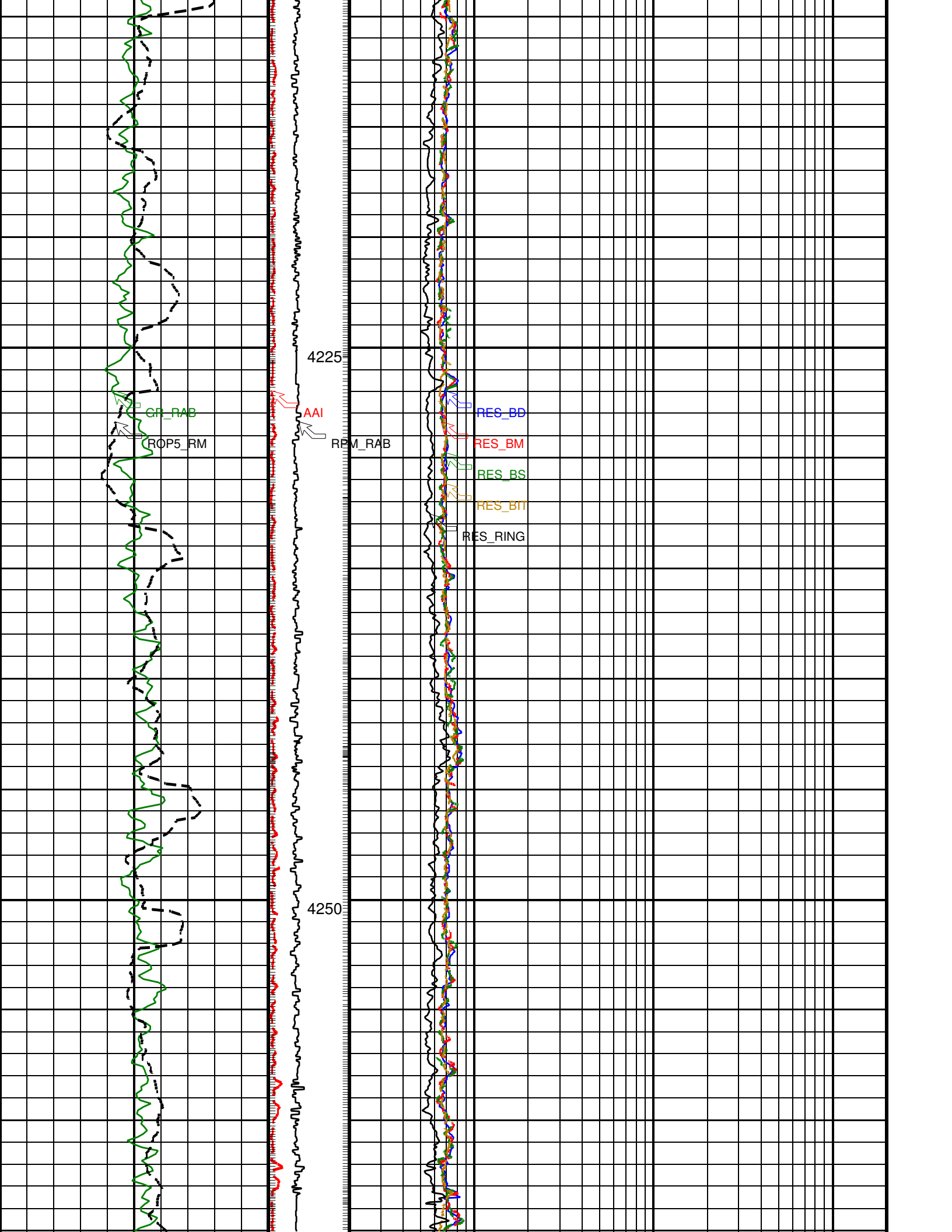
- └ Gamma Ray Samples
- └ Ring Samples

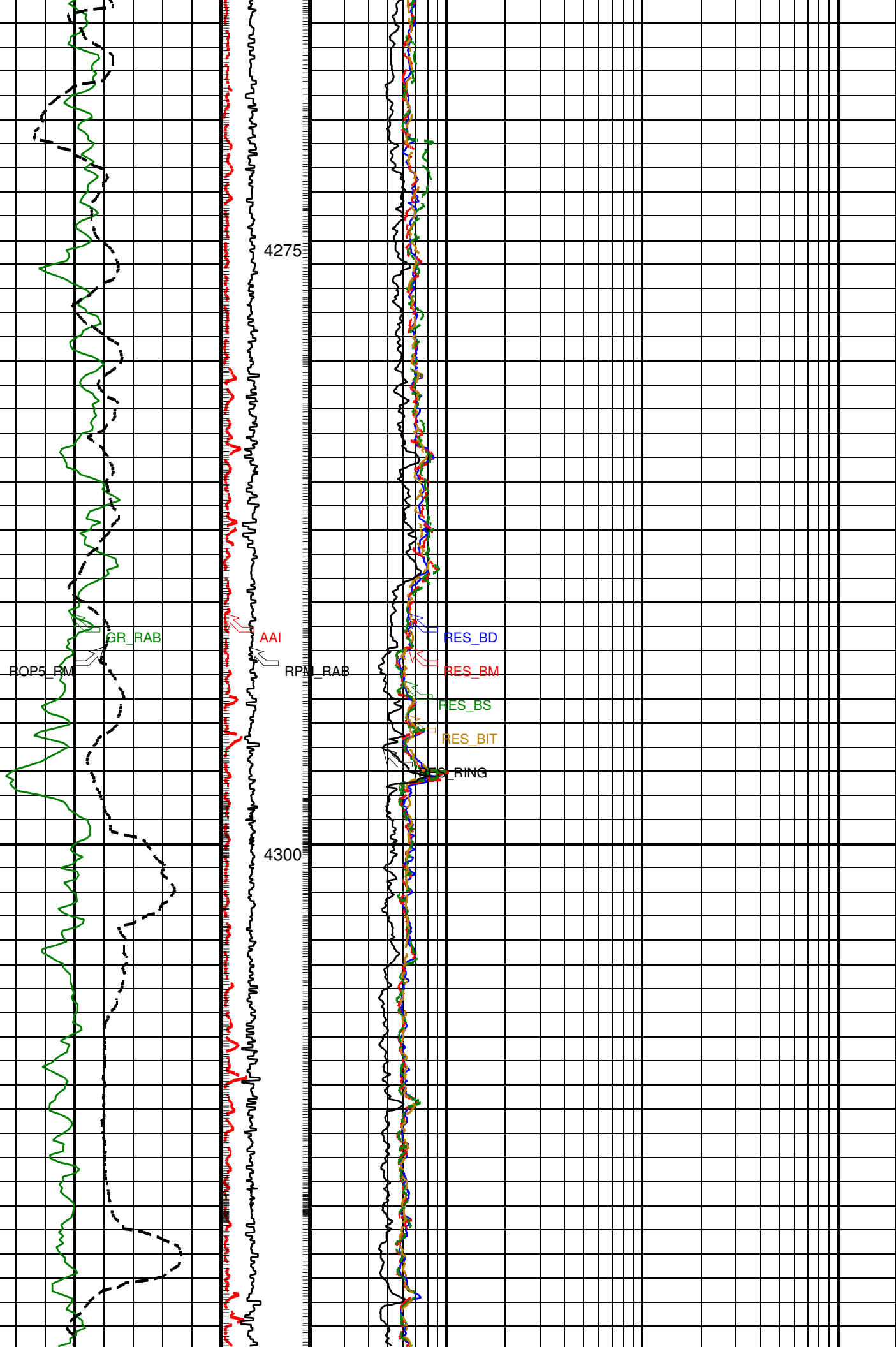
		Ring Resistivity (RES_RING)	200
		0.2 (OHMM)	
		Bit Resistivity (RES_BIT)	200
		0.2 (OHMM)	
		Shallow Button Resistivity (RES_BS)	200
		0.2 (OHMM)	
ROP: 5 Feet Average (ROP5_RM) (M/HR)	0 100 200	RAB Rotational Speed (RPM_RAB) (RPM)	0.2 (OHMM) 200
		0 300	
RAB Gamma Ray (GR_RAB) (GAPI)	0 150	Angular Acceleration Indicator (AAI) (----)	Deep Button Resistivity (RES_BD) (OHMM)
		0 300	200

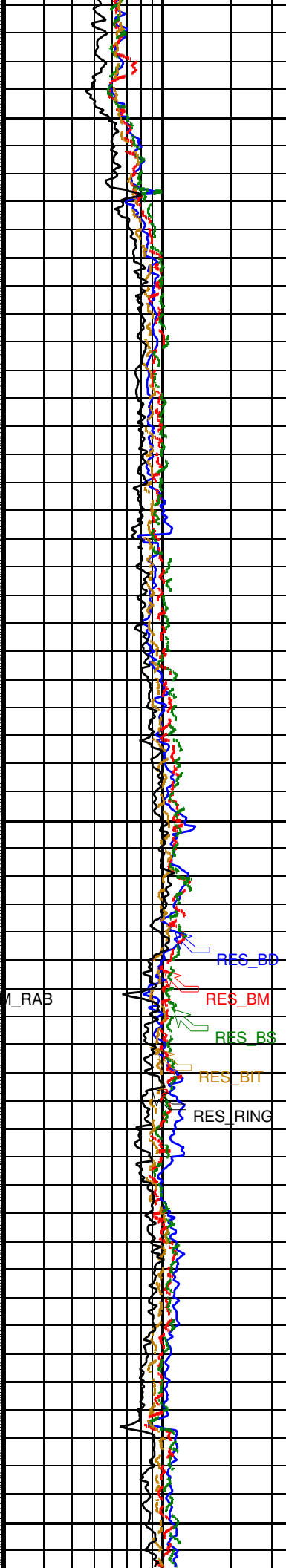
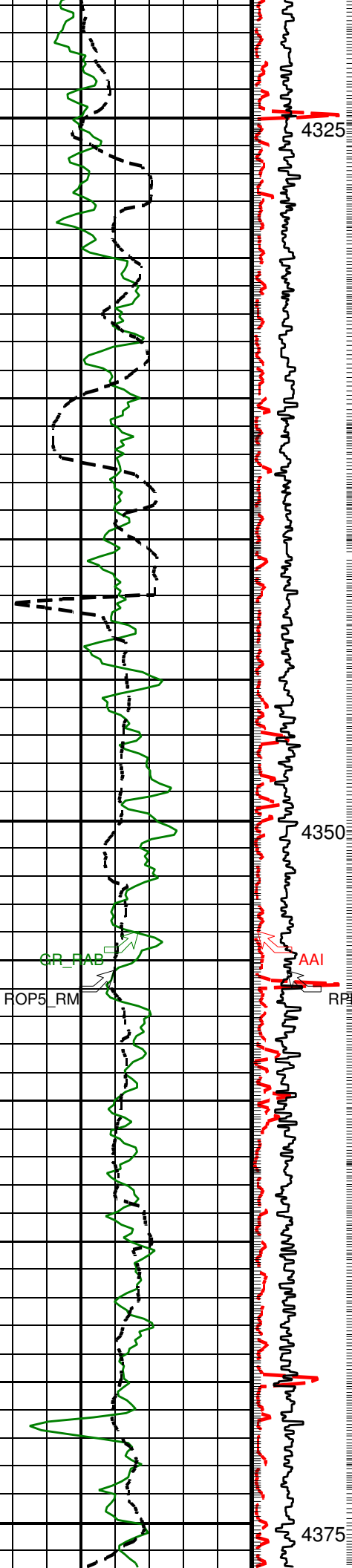








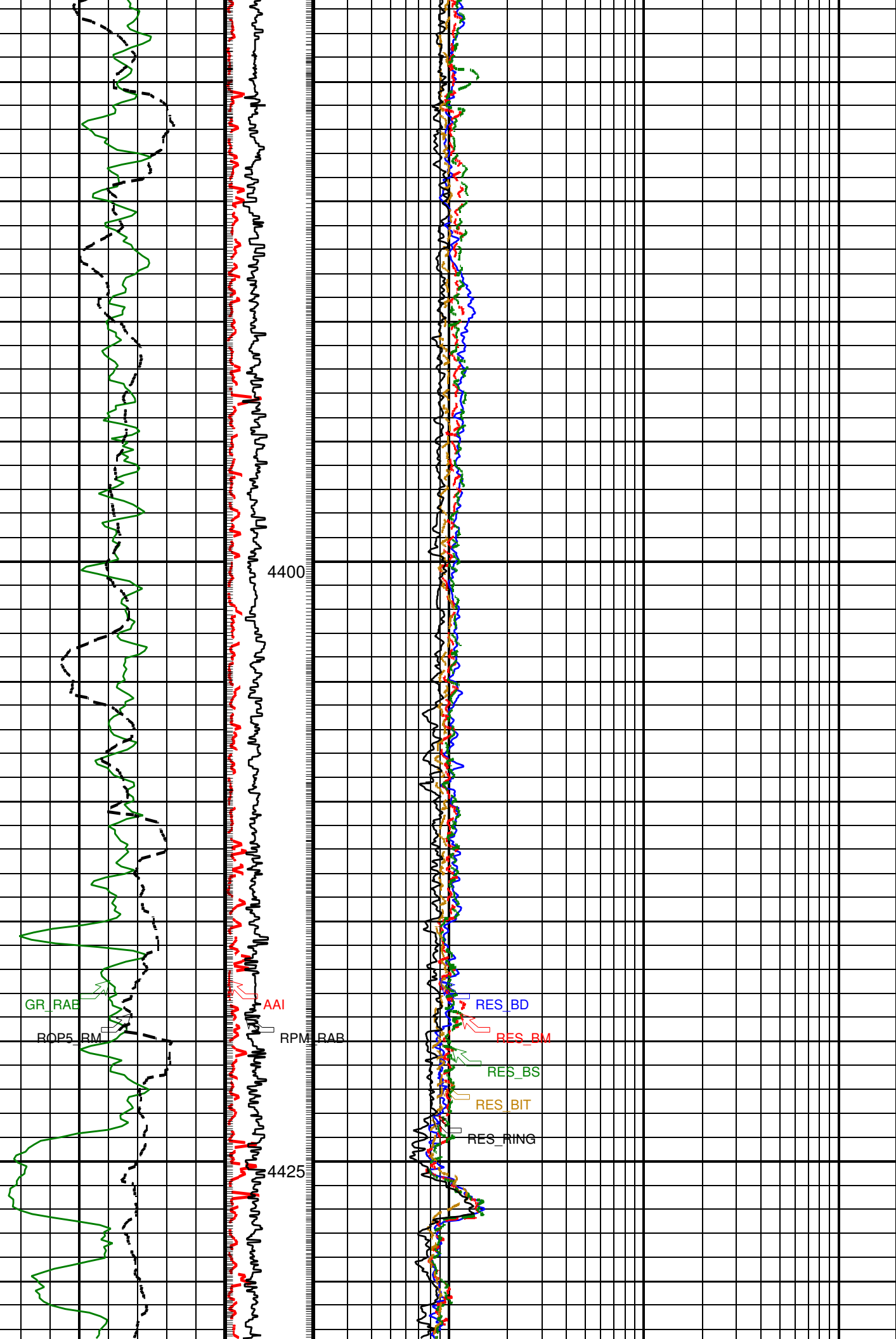


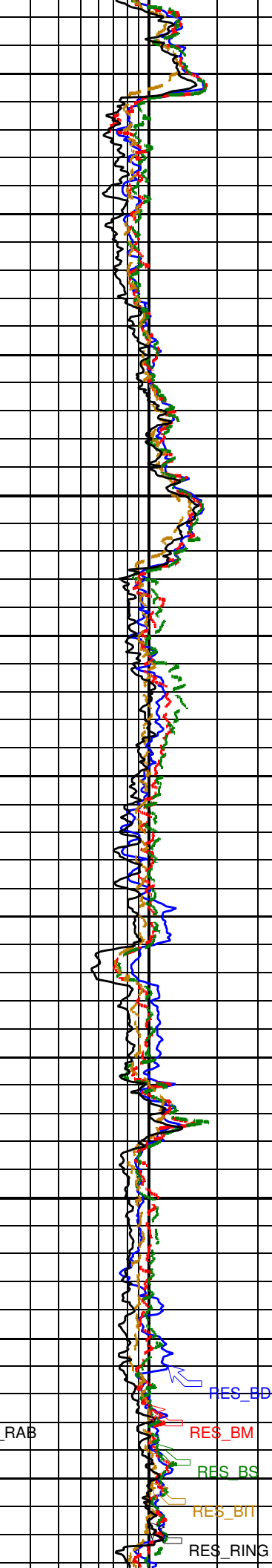
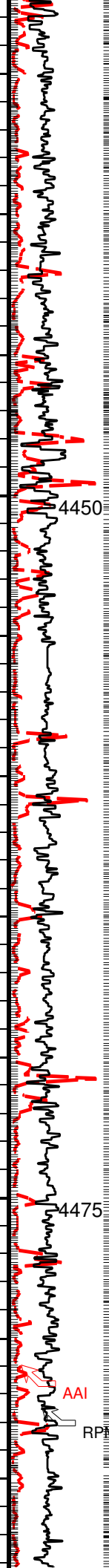
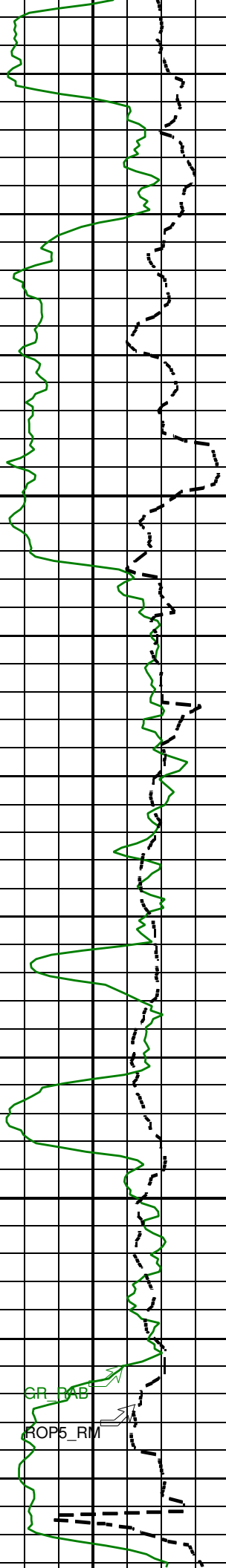


GR_FAB
FOP5_RM

AAI
RPM_RAB

RES_BD
RES_BM
RES_BS
RES_BIT
RES_RING

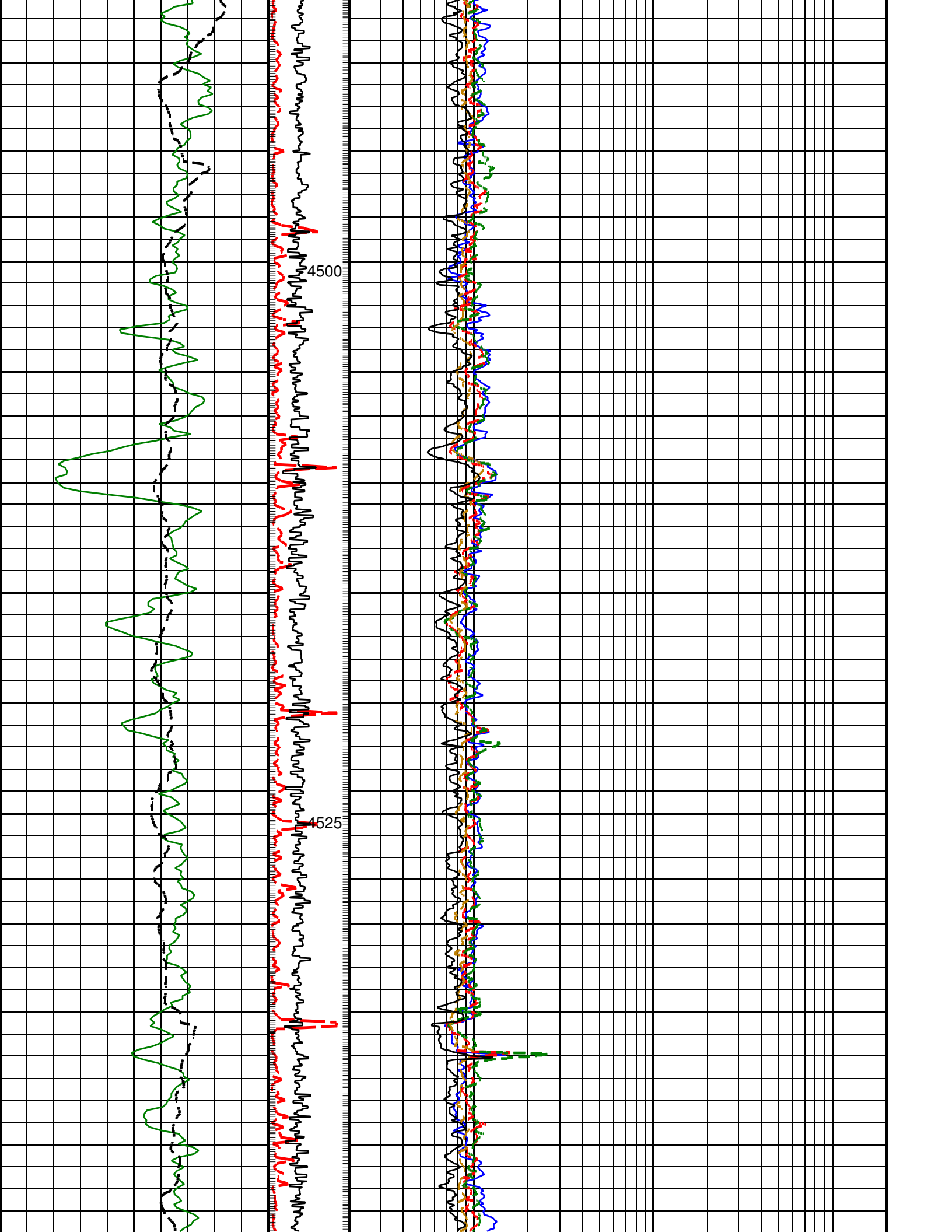




4450

4475

RPT_RAB



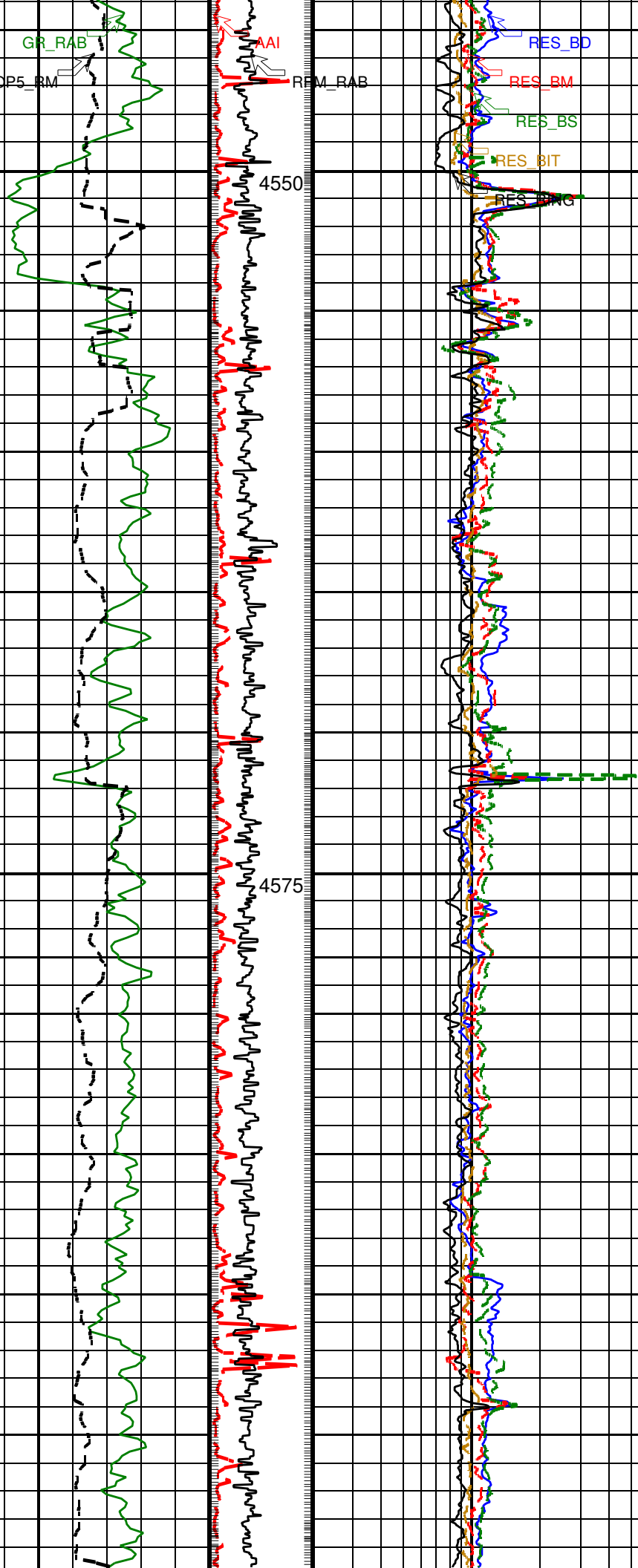
GR_RAB
RCP5_RM

AAI
REM_RAB

RES_BD
RES_BM
RES_BS
RES_BIT
RES_BMG

4550

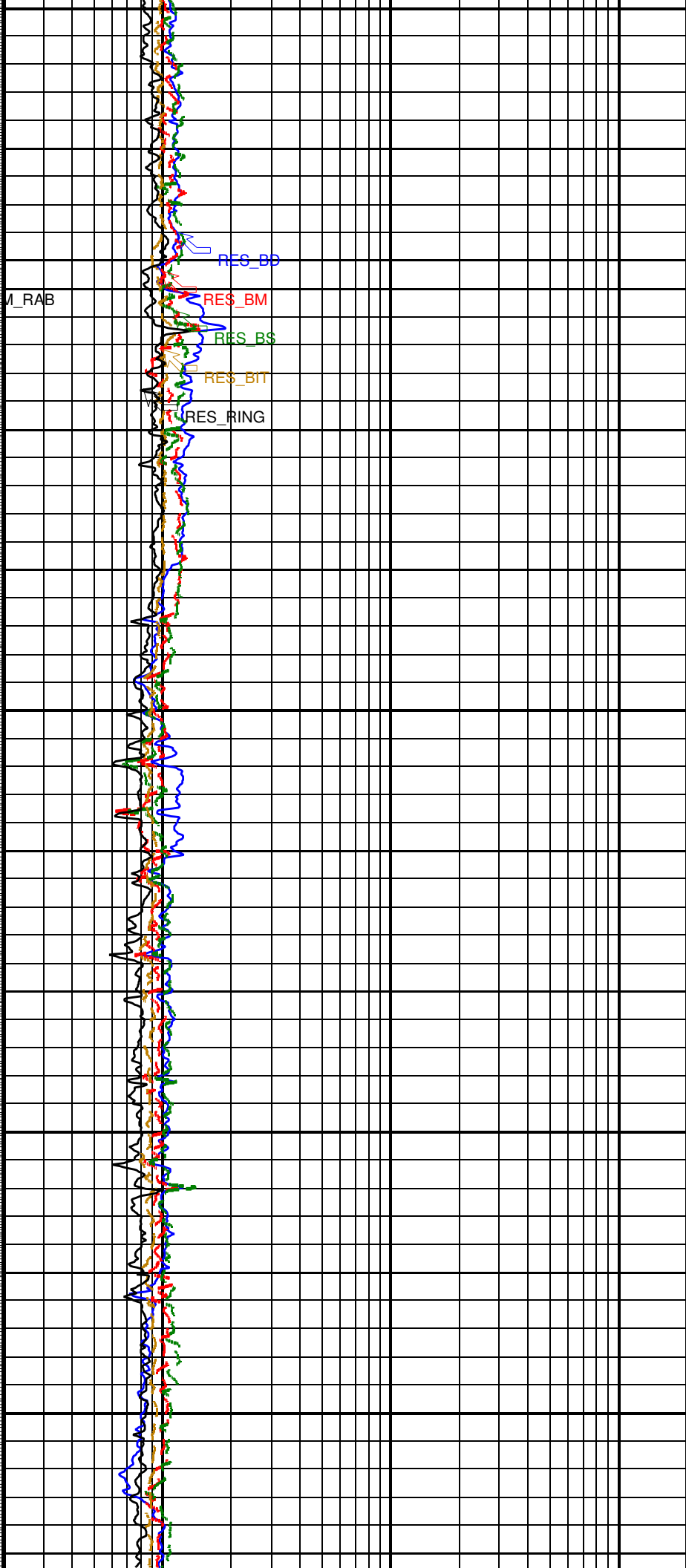
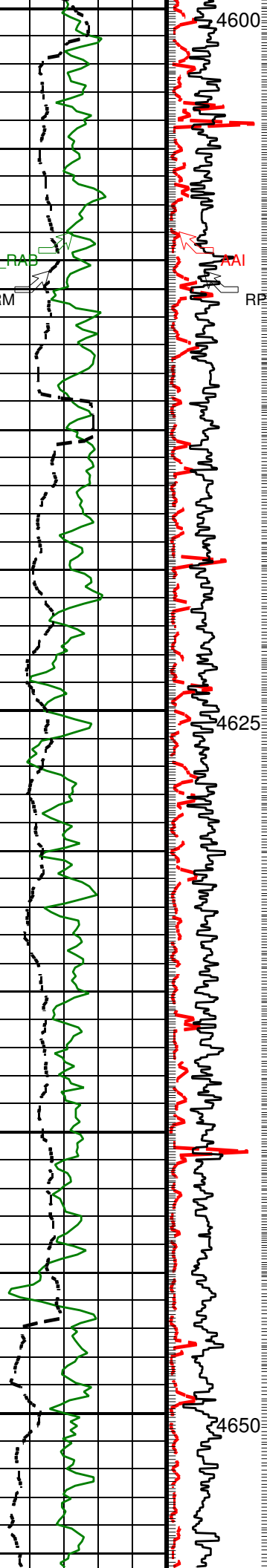
4575

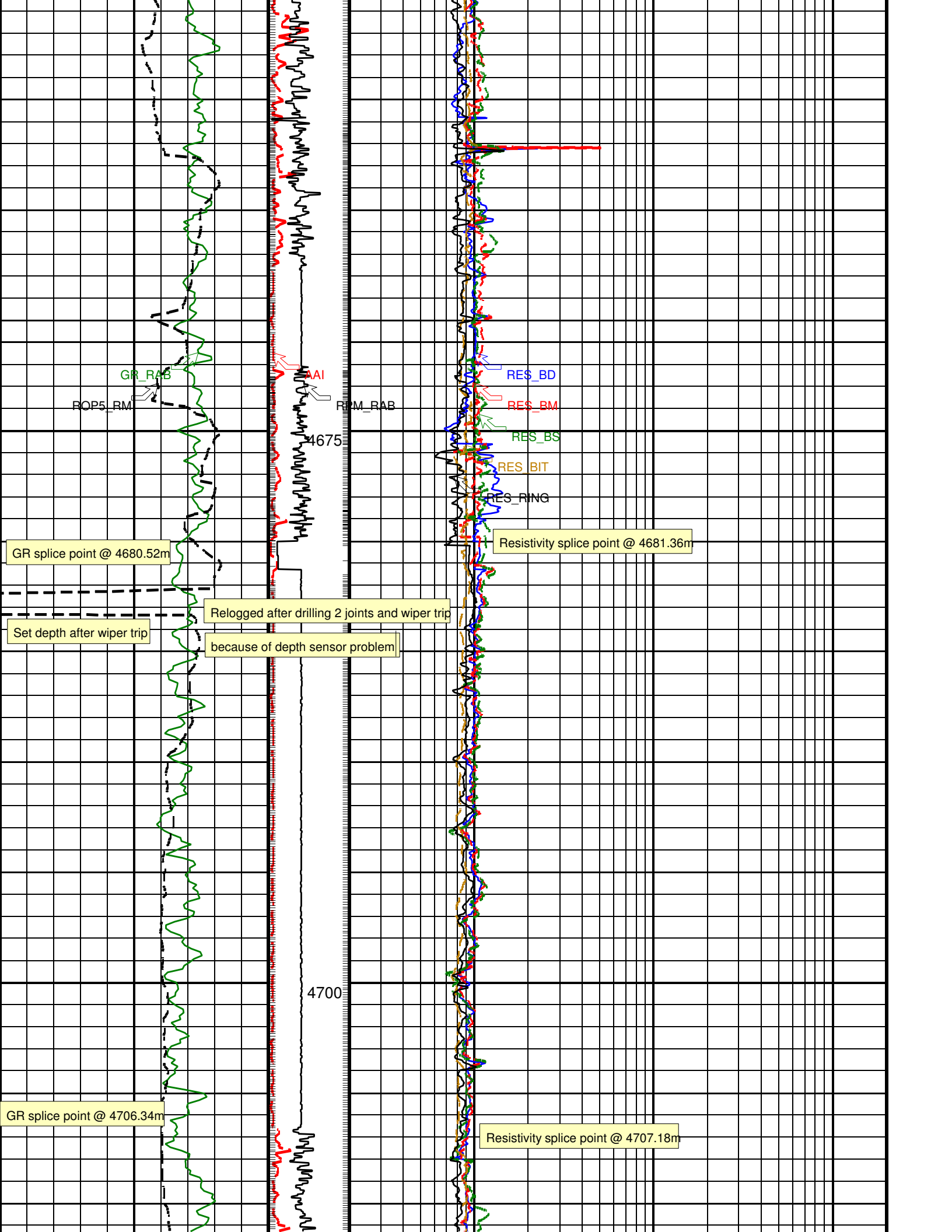


CF_RAB
RCP5_RM

RAB

RES_BD
RES_BM
RES_BS
RES_BIT
RES_RING





GR_RAB

BOP5_RM

AAI

RM_RAB

RES_BD

RES_BM

RES_BS

RES_BIT

RES_RING

GR splice point @ 4680.52m

Resistivity splice point @ 4681.36m

Relogged after drilling 2 joints and wiper trip

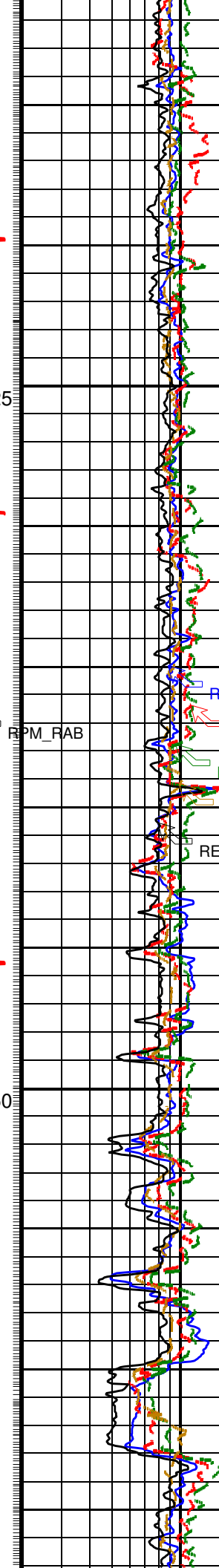
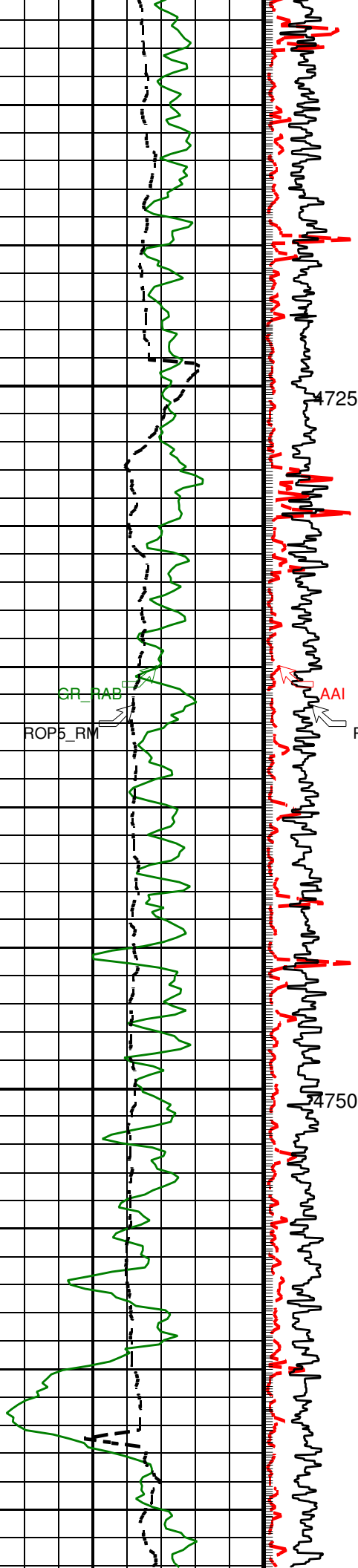
Set depth after wiper trip

because of depth sensor problem

4700

GR splice point @ 4706.34m

Resistivity splice point @ 4707.18m



725

750

GR_RAB

ROP5_RM

AAI

RPM_RAB

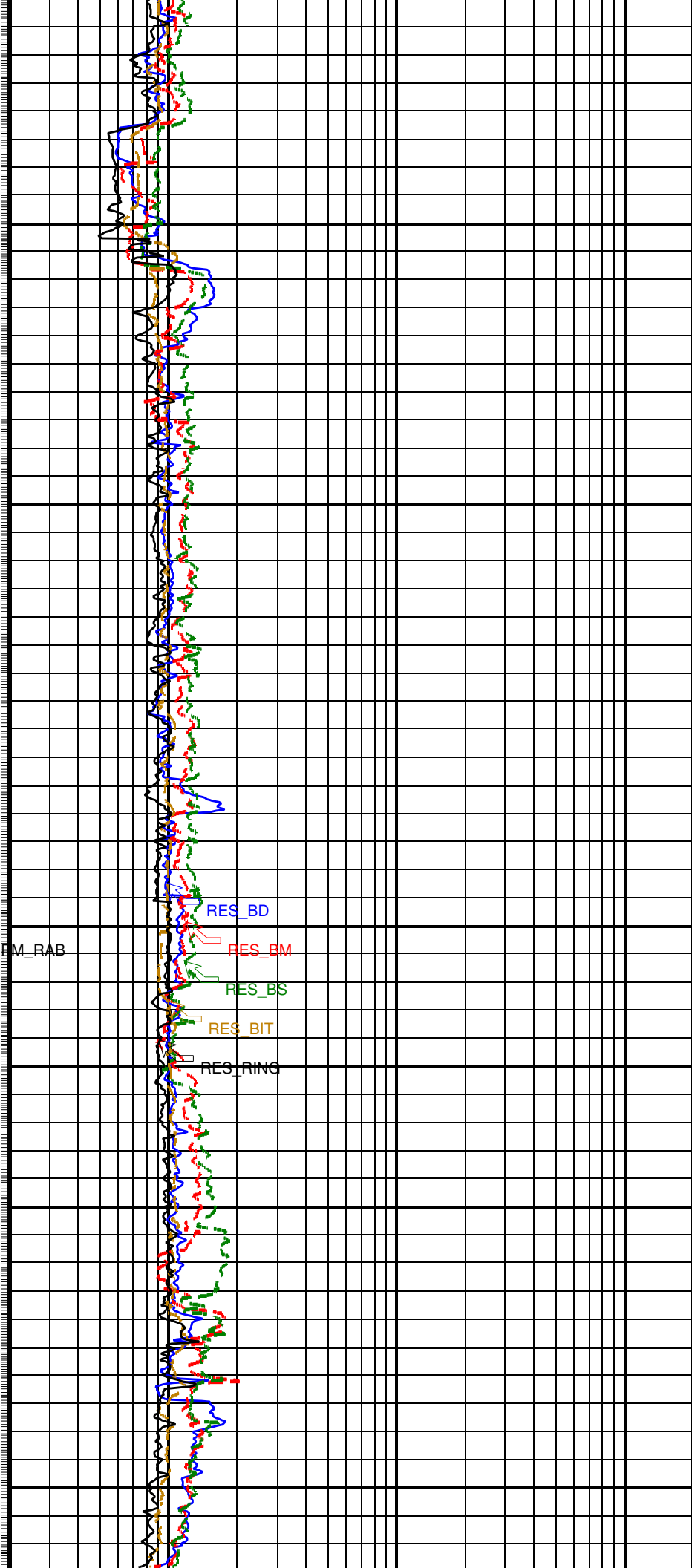
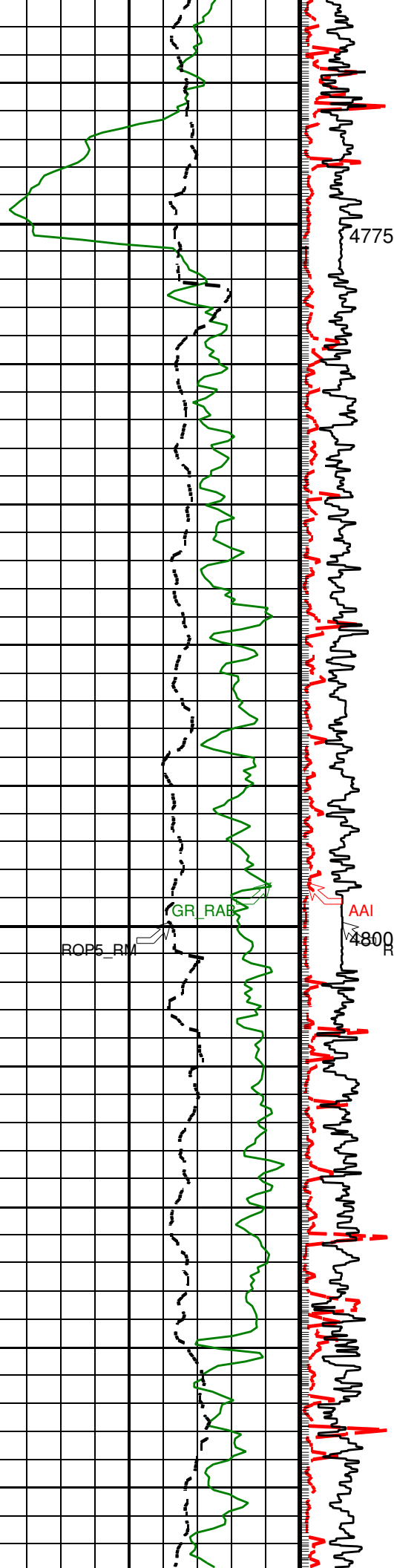
RES_BD

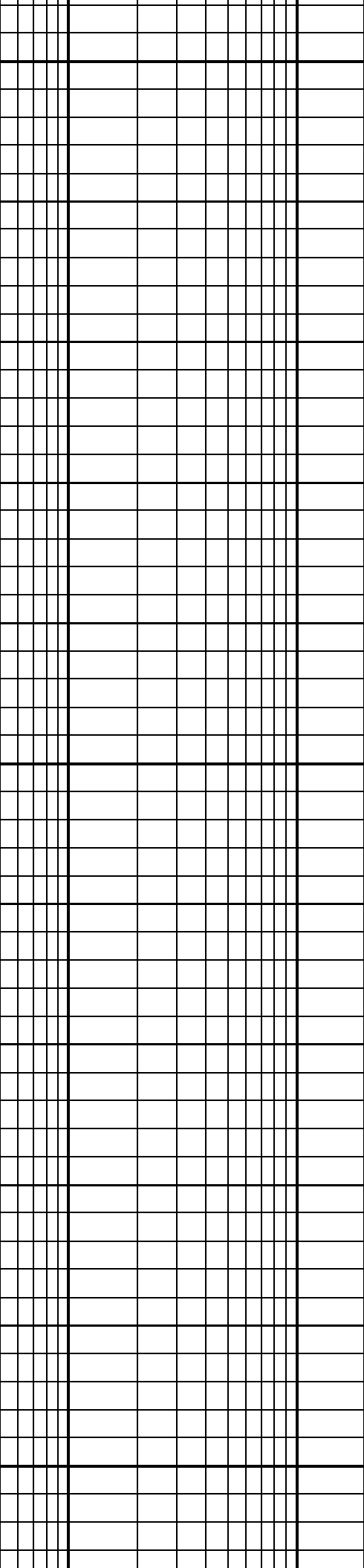
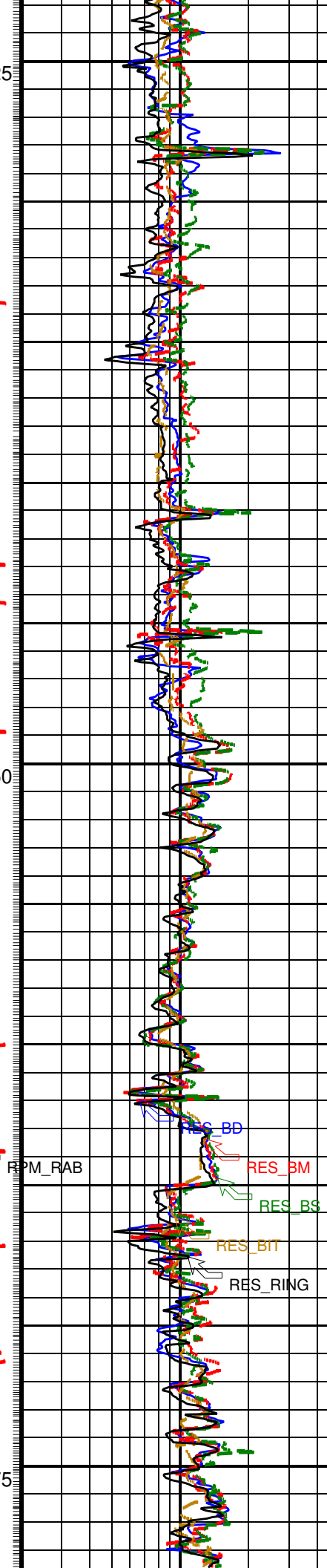
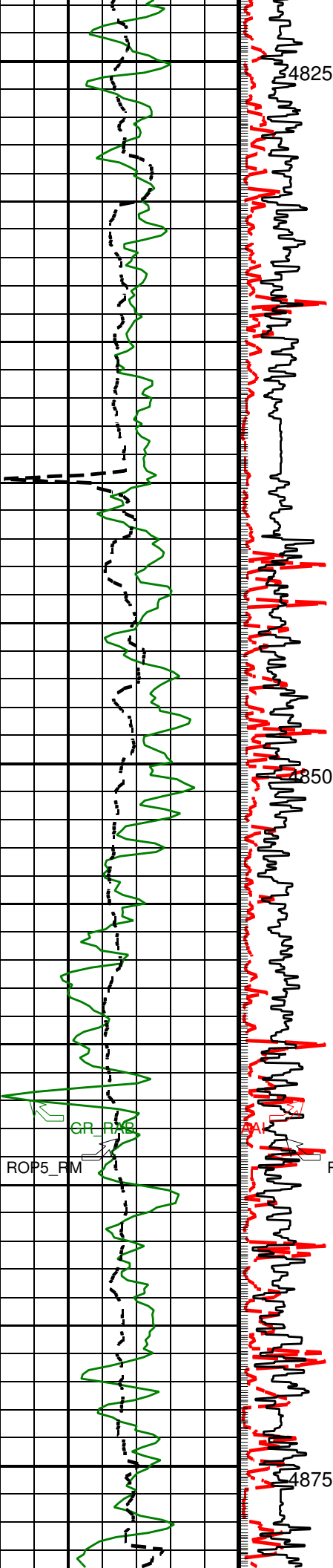
RES_BM

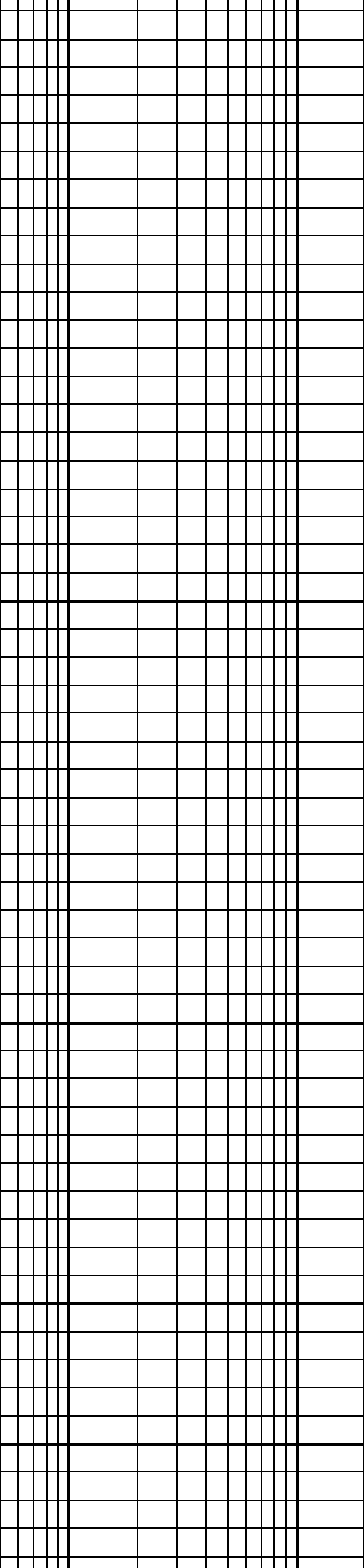
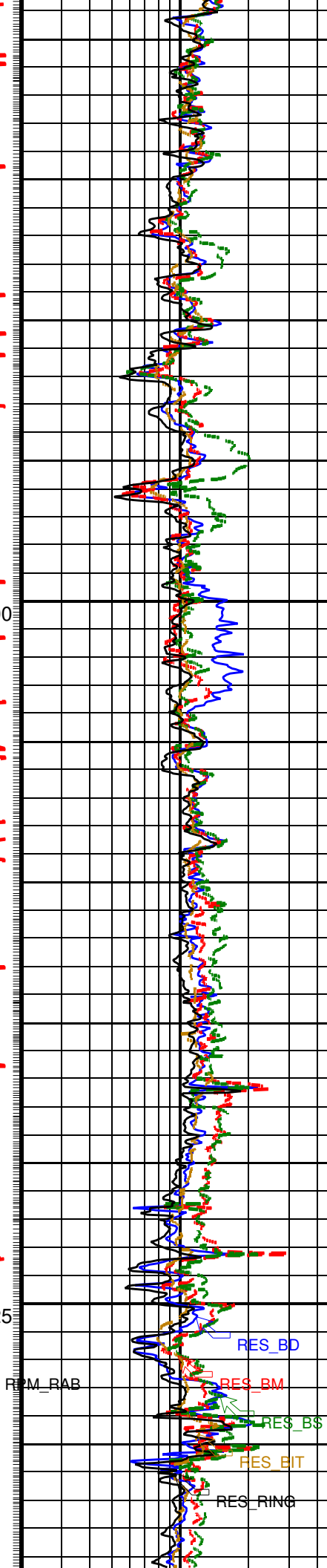
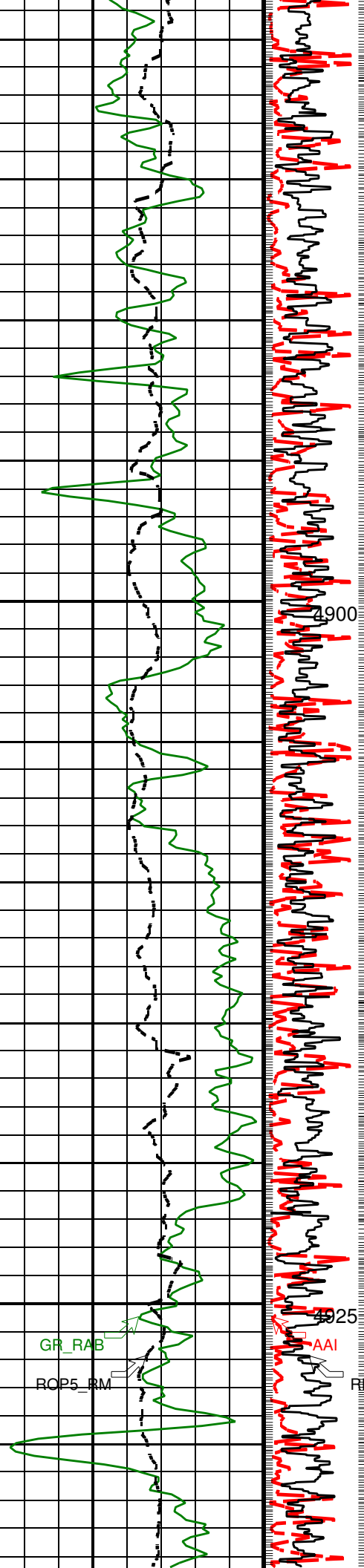
RES_BS

RES_BIT

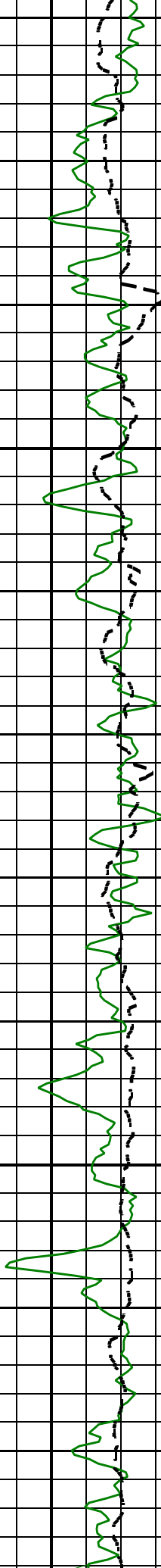
RES_RING







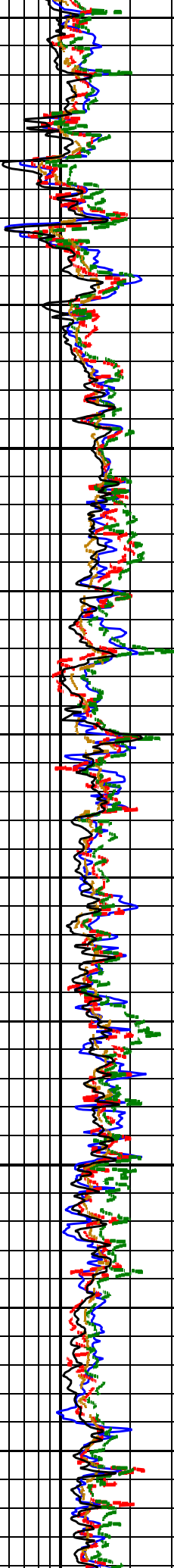
GR RAB

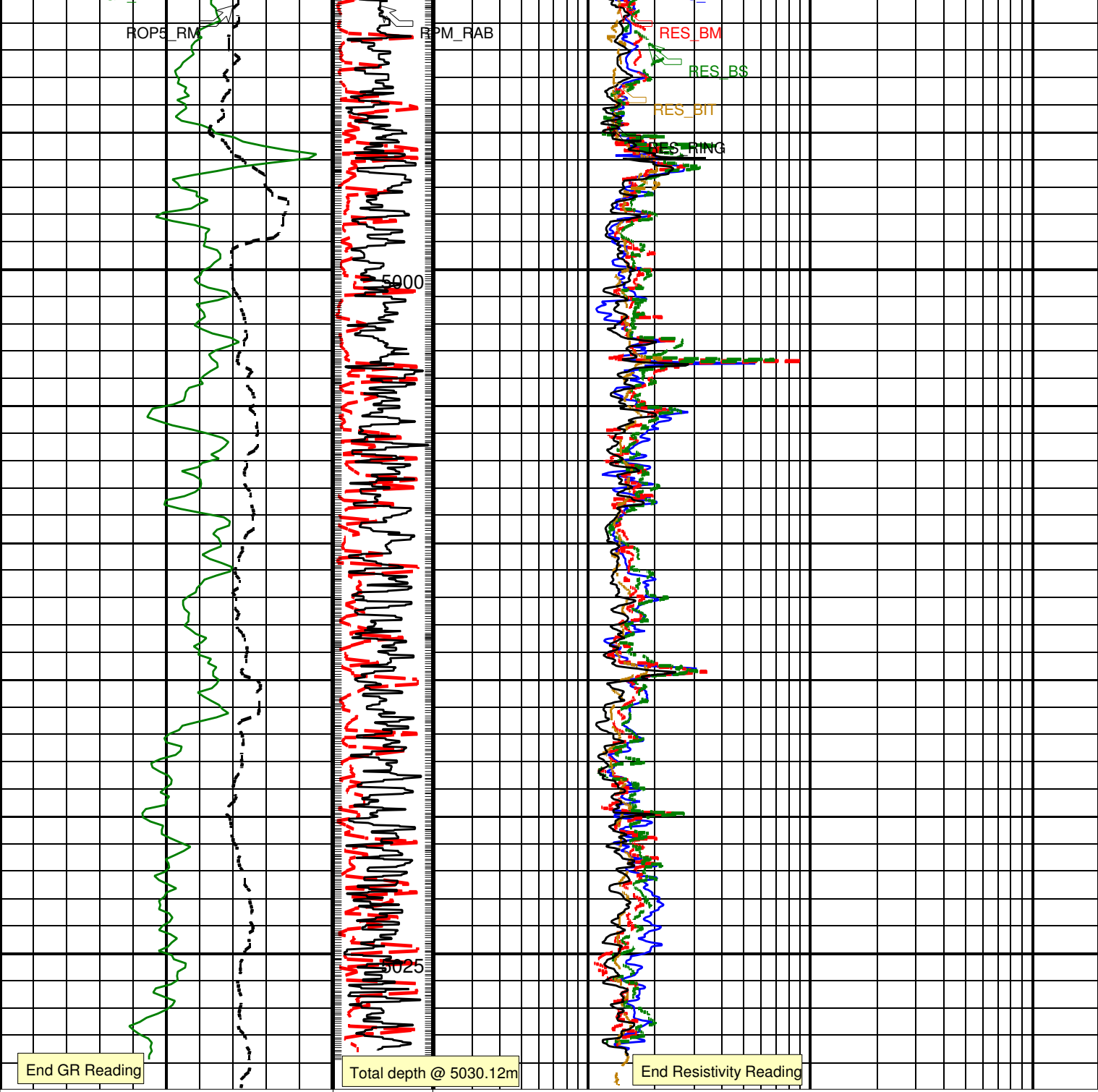


AAI



RES BB





<p>RAB Gamma Ray (GR_RAB) (GAPI)</p> <p>0 150</p>	<p>Angular Acceleration Indicator (AAI) (---)</p> <p>0 300</p>	<p>Deep Button Resistivity (RES_BD) (OHMM)</p> <p>0.2 200</p>
<p>ROP: 5 Feet Average (ROP5_RM) (M/HR)</p> <p>100 0</p>	<p>RAB Rotational Speed (RPM_RAB) (RPM)</p> <p>0 300</p>	<p>Medium Button Resistivity (RES_BM) (OHMM)</p> <p>0.2 200</p>
		<p>Shallow Button Resistivity (RES_BS) (OHMM)</p> <p>0.2 200</p>
		<p>Bit Resistivity (RES_BIT) (OHMM)</p> <p>0.2 200</p>
		<p>Ring Resistivity (RES_RING)</p>

PIP SUMMARY

- └ Gamma Ray Samples
- └ Ring Samples

IDEAL Version: ID14_0C_12
IDF

Input DLIS Files

SAVE

File ID:Run_1

FN:19 03-Sep-2009 15:43

13148.0 FT

16503.0 FT