

Input DLIS Files

SAVE

File ID:Run_1

FN:19 03-Sep-2009 15:43

13148.0 FT

16503.0 FT

IDEAL Version: ID14_OC_12 IDF

Format: NT1-07_GeoVISION Resistivity_RM_MD500 Vertical Scale: 1:500 Graphics File Created: 04-Sep-2009 14:35

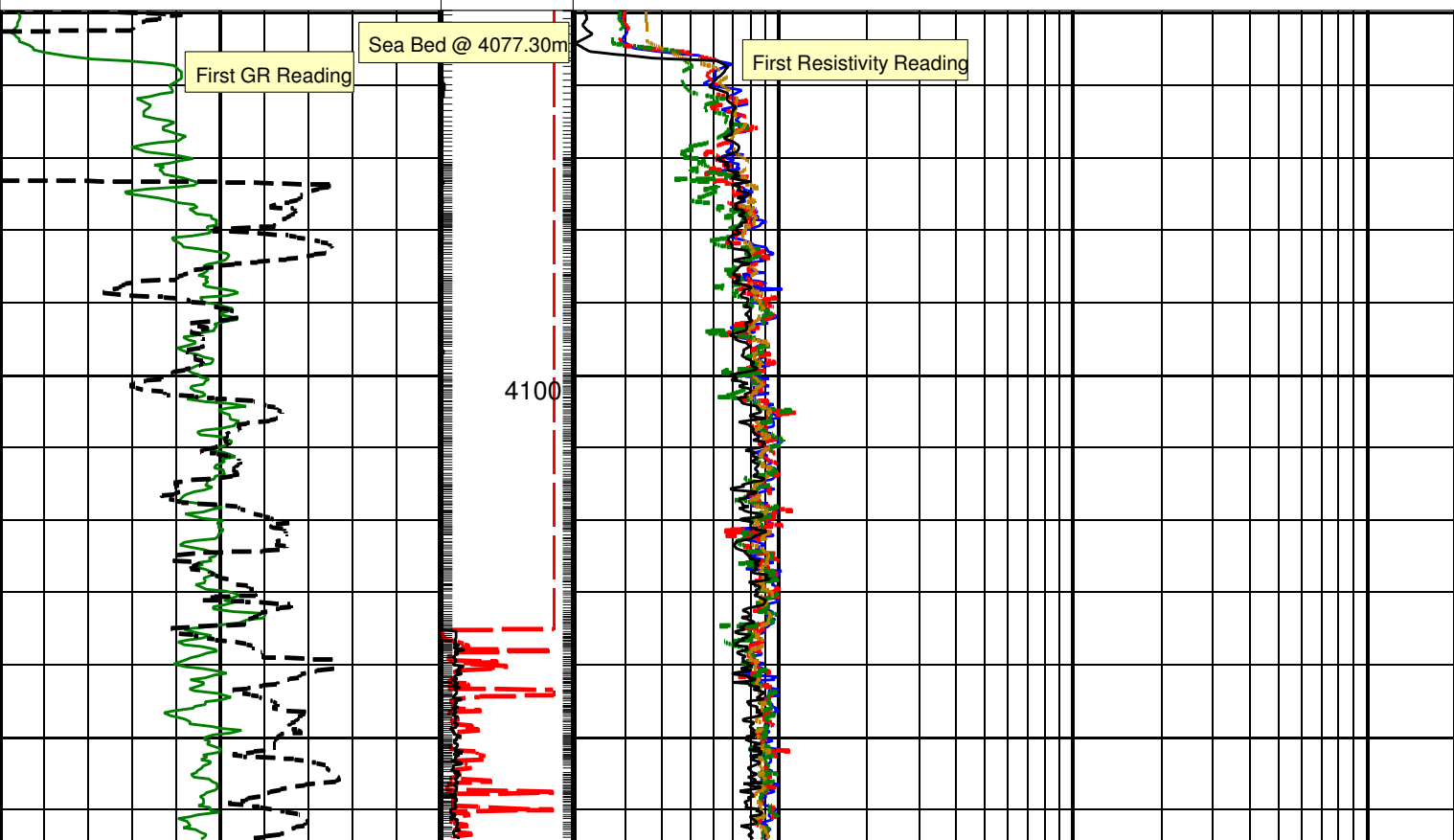
Parameters

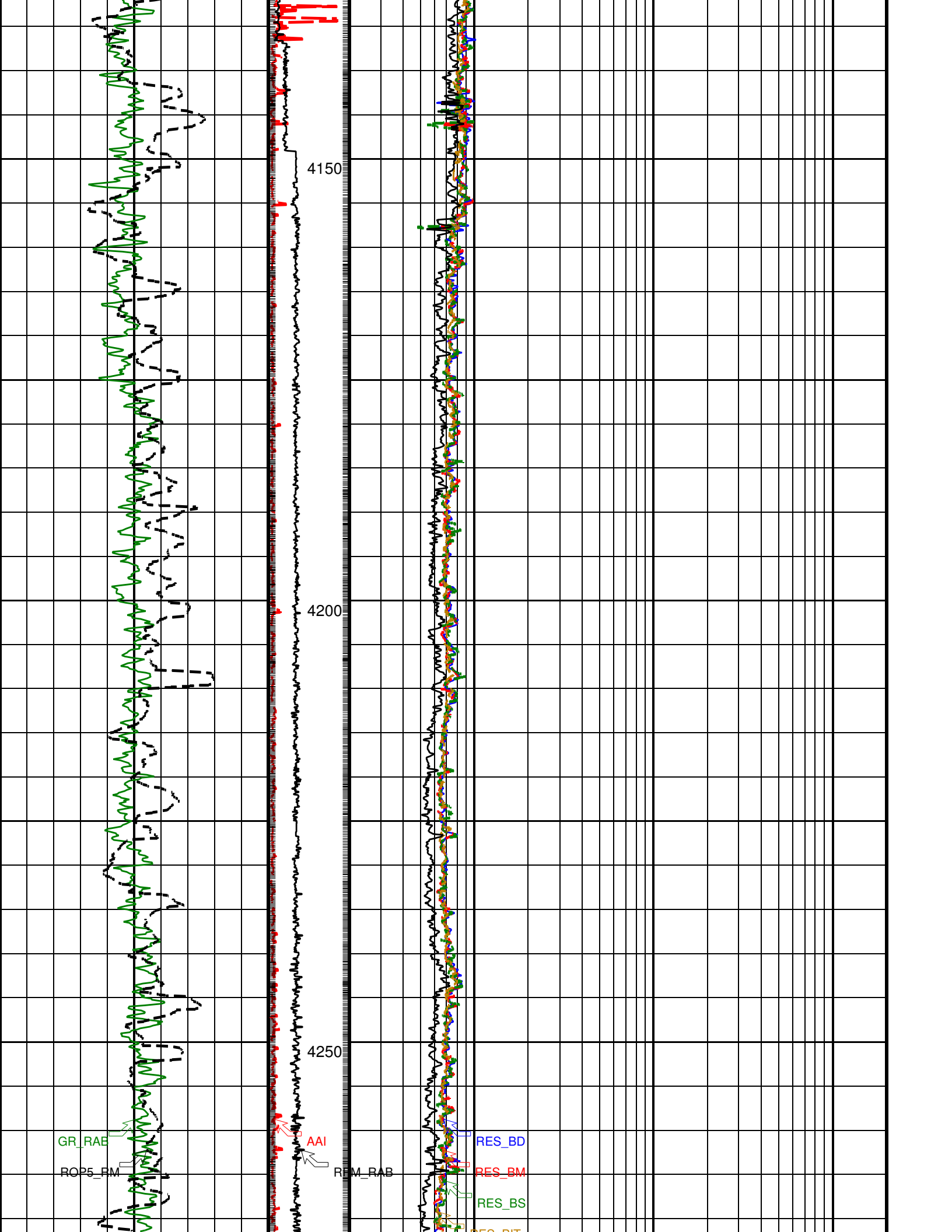
DLIS Name	Description	Value
DO	Depth Offset	0.0 m

PIP SUMMARY

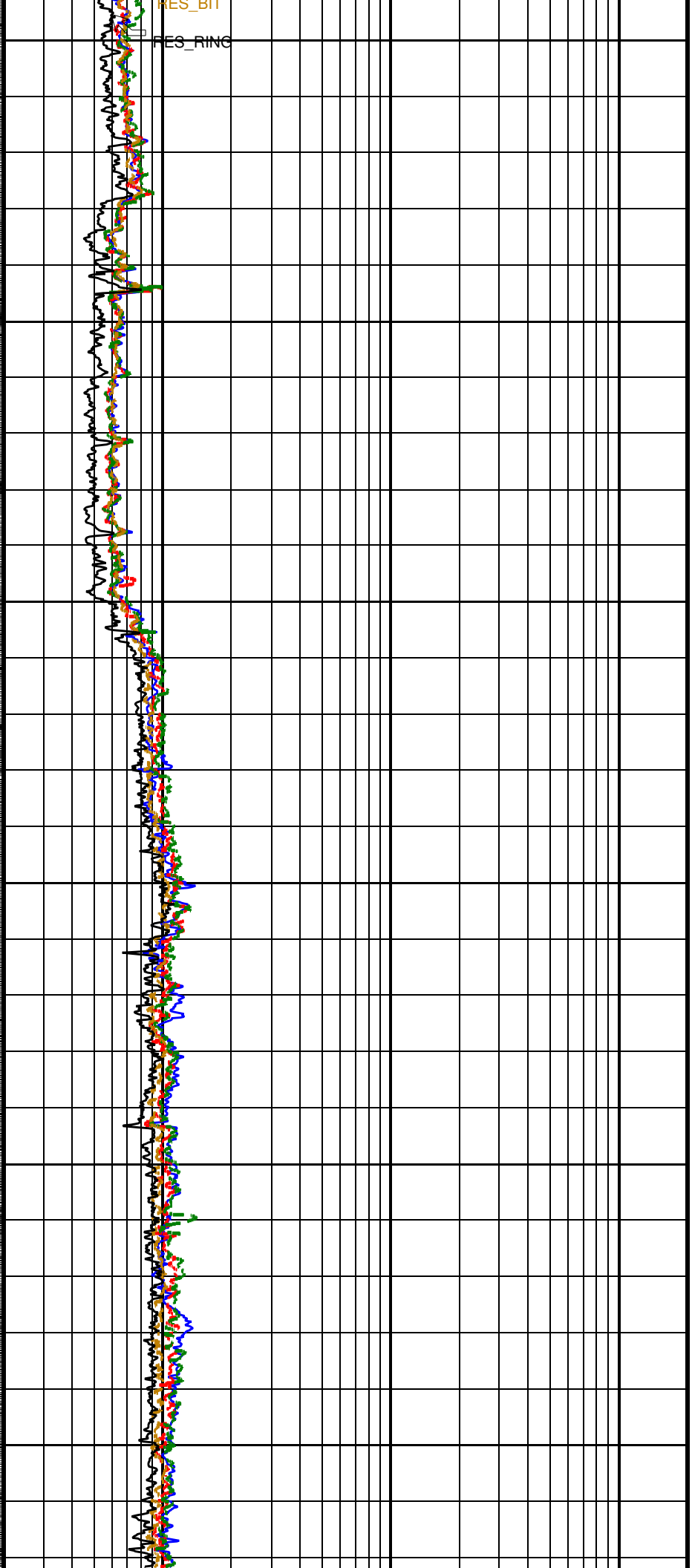
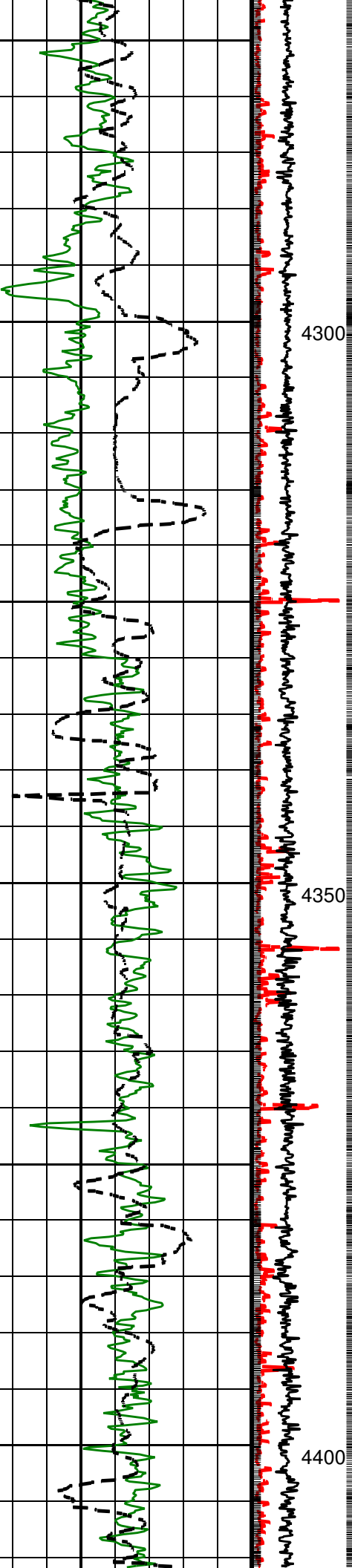
- └ Gamma Ray Samples
- └ Ring Samples

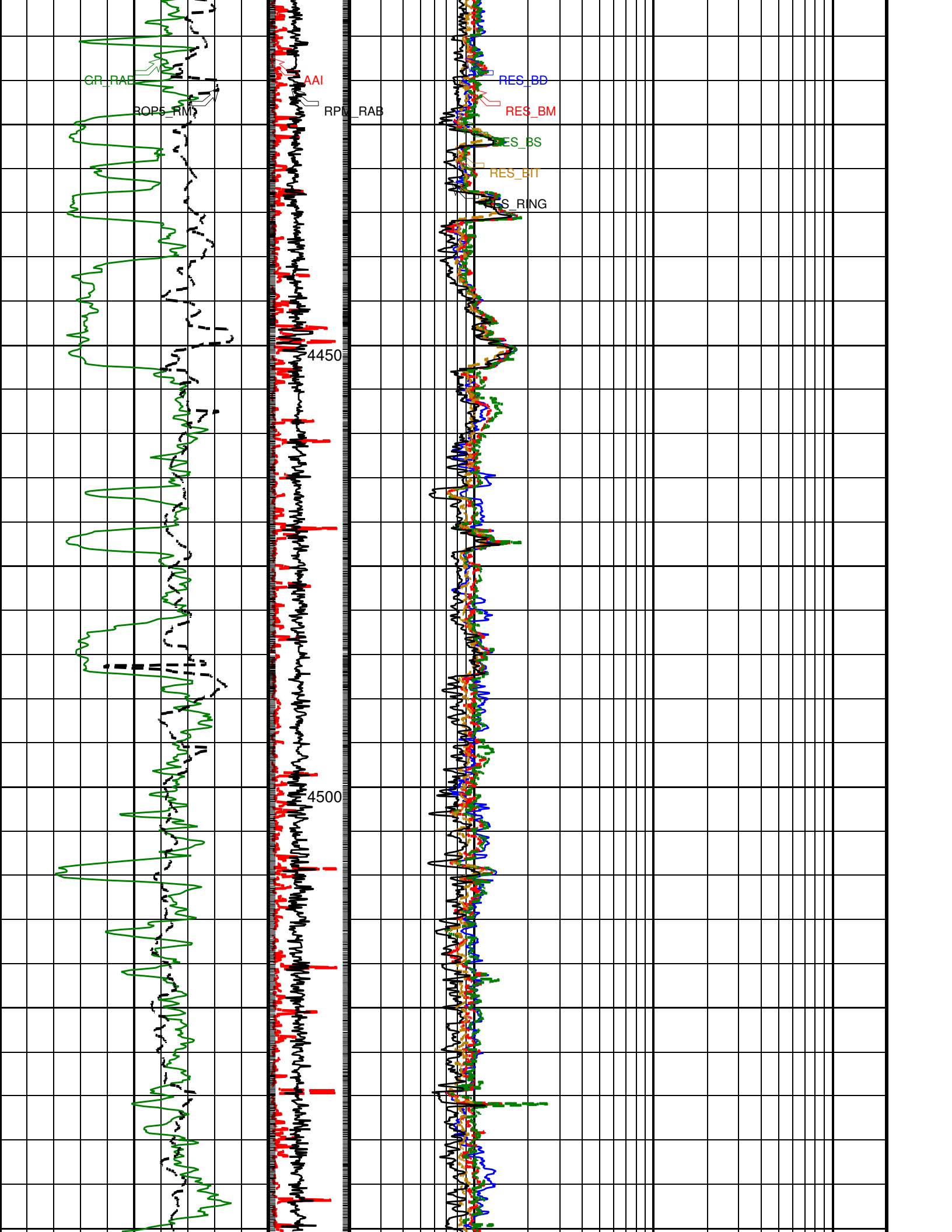
		Ring Resistivity (RES_RING)	200
		0.2 (OHMM)	
		Bit Resistivity (RES_BIT)	200
		0.2 (OHMM)	
		Shallow Button Resistivity (RES_BS)	200
		0.2 (OHMM)	
ROP: 5 Feet Average (ROP5_RM) (M/HR)	RAB Rotational Speed (RPM_RAB) (RPM)	Medium Button Resistivity (RES_BM)	200
0	0 300	0.2 (OHMM)	
RAB Gamma Ray (GR_RAB) (GAPI)	Angular Acceleratio n Indicator (AAI) (----)	Deep Button Resistivity (RES_BD)	200
0 150	0 300	0.2 (OHMM)	

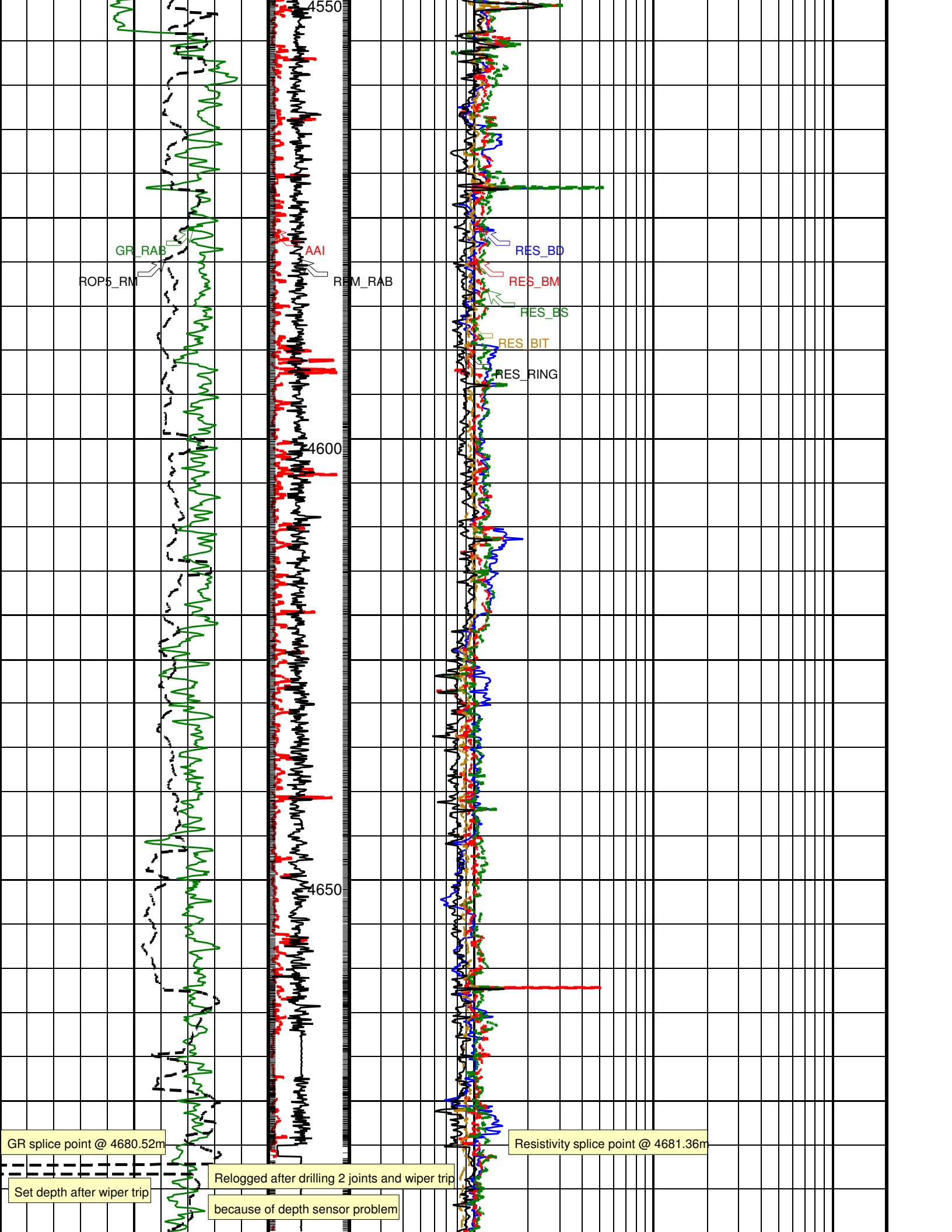


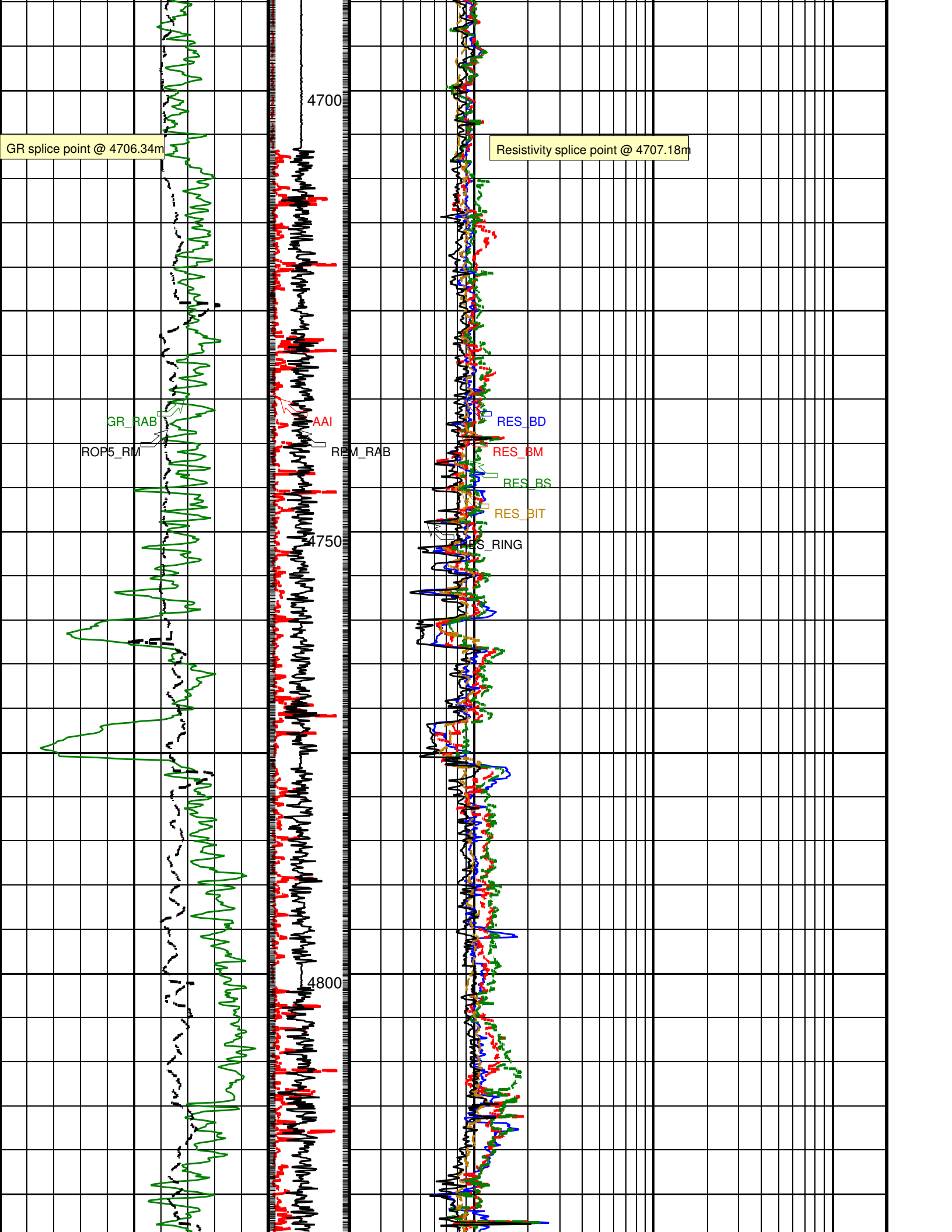


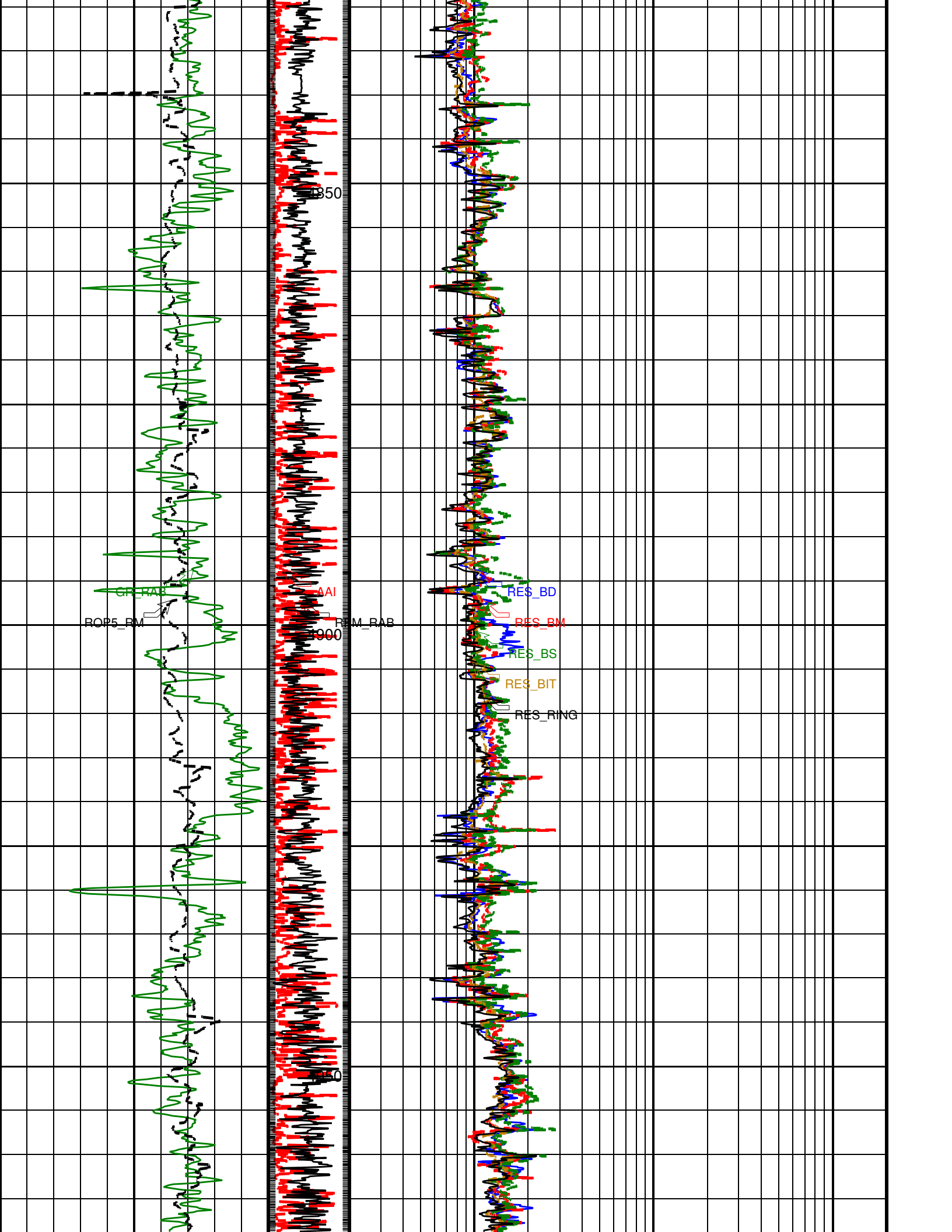
RES_BIT
RES_RING

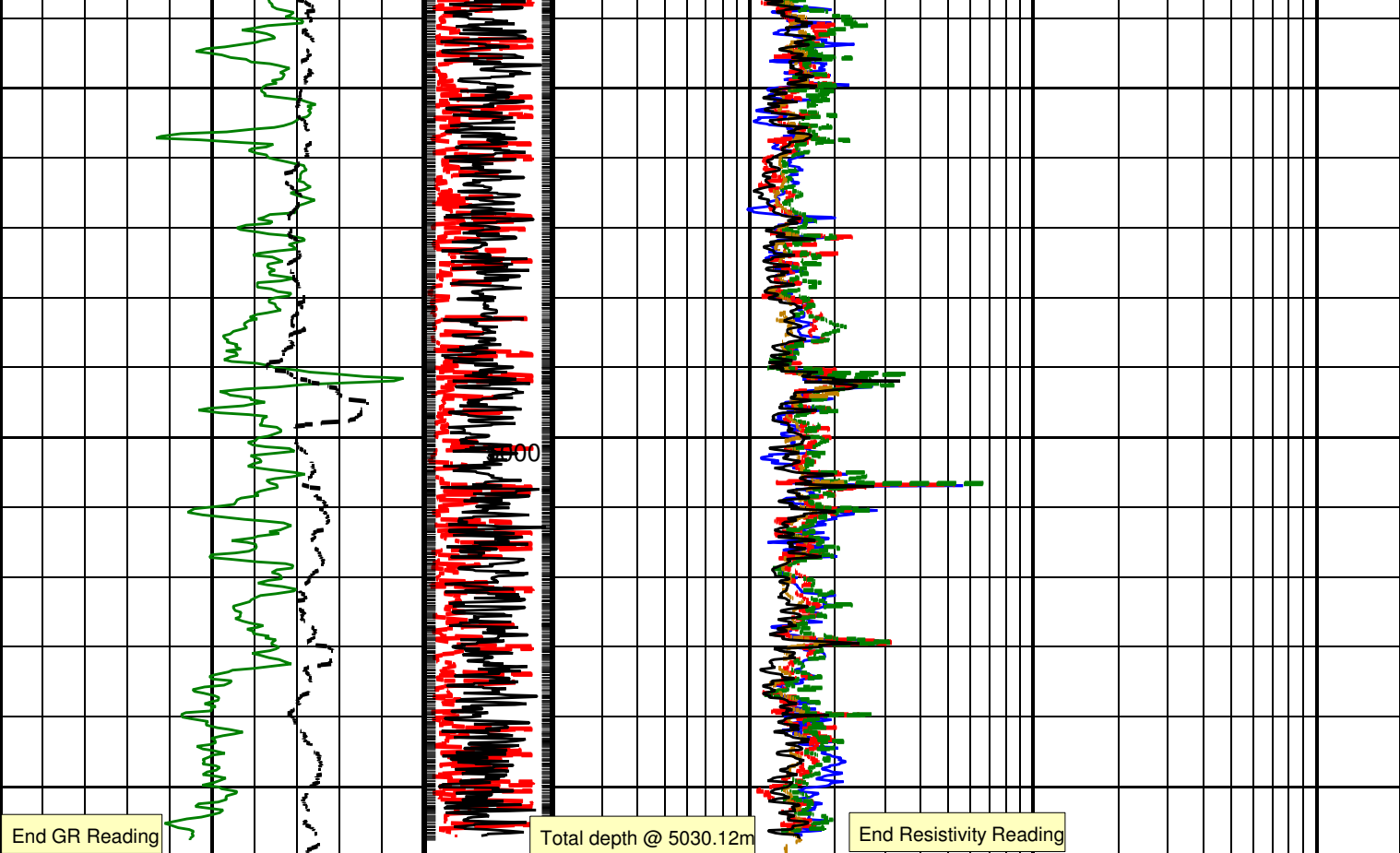












<p>End GR Reading</p> <p>RAB Gamma Ray (GR_RAB) (GAPI)</p> <p>0 150</p>	<p>Angular Acceleration Indicator (AAI) (----)</p> <p>0 300</p>	<p>Total depth @ 5030.12m</p> <p>Deep Button Resistivity (RES_BD) (OHMM)</p> <p>0.2 200</p>
<p>ROP: 5 Feet Average (ROP5_RM) (M/HR)</p> <p>100 0</p>	<p>RAB Rotational Speed (RPM_RAB) (RPM)</p> <p>0 300</p>	<p>Medium Button Resistivity (RES_BM) (OHMM)</p> <p>0.2 200</p>
		<p>Shallow Button Resistivity (RES_BS) (OHMM)</p> <p>0.2 200</p>
		<p>Bit Resistivity (RES_BIT) (OHMM)</p> <p>0.2 200</p>
		<p>Ring Resistivity (RES_RING) (OHMM)</p> <p>0.2 200</p>

PIP SUMMARY

┆ Gamma Ray Samples
┆ Ring Samples

IDEAL Version: ID14_0C_12
IDF

Input DLIS Files

SAVE File ID:Run_1 FN:19 03-Sep-2009 15:43 13148.0 FT 16503.0 FT