

Input DLIS Files

SAVE

File ID:Run_1

FN:19 03-Sep-2009 15:43

13148.0 FT

16503.0 FT

IDEAL Version: ID14_OC_12
IDF

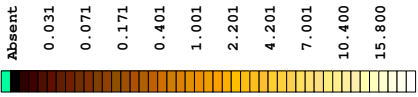

Format: RABFixedImageHi Vertical Scale: 1:200 Graphics File Created: 04-Sep-2009 16:08

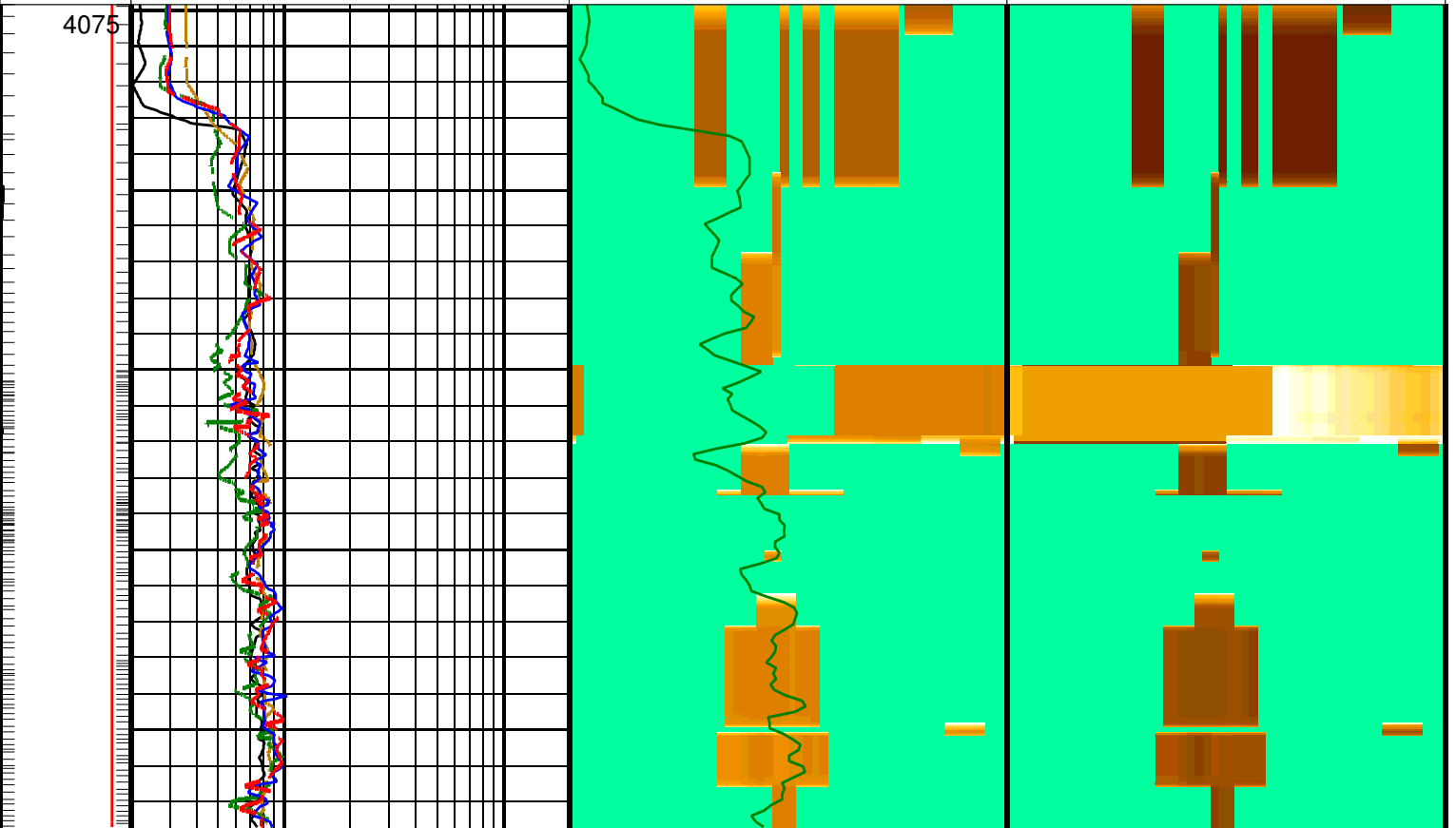
Parameters

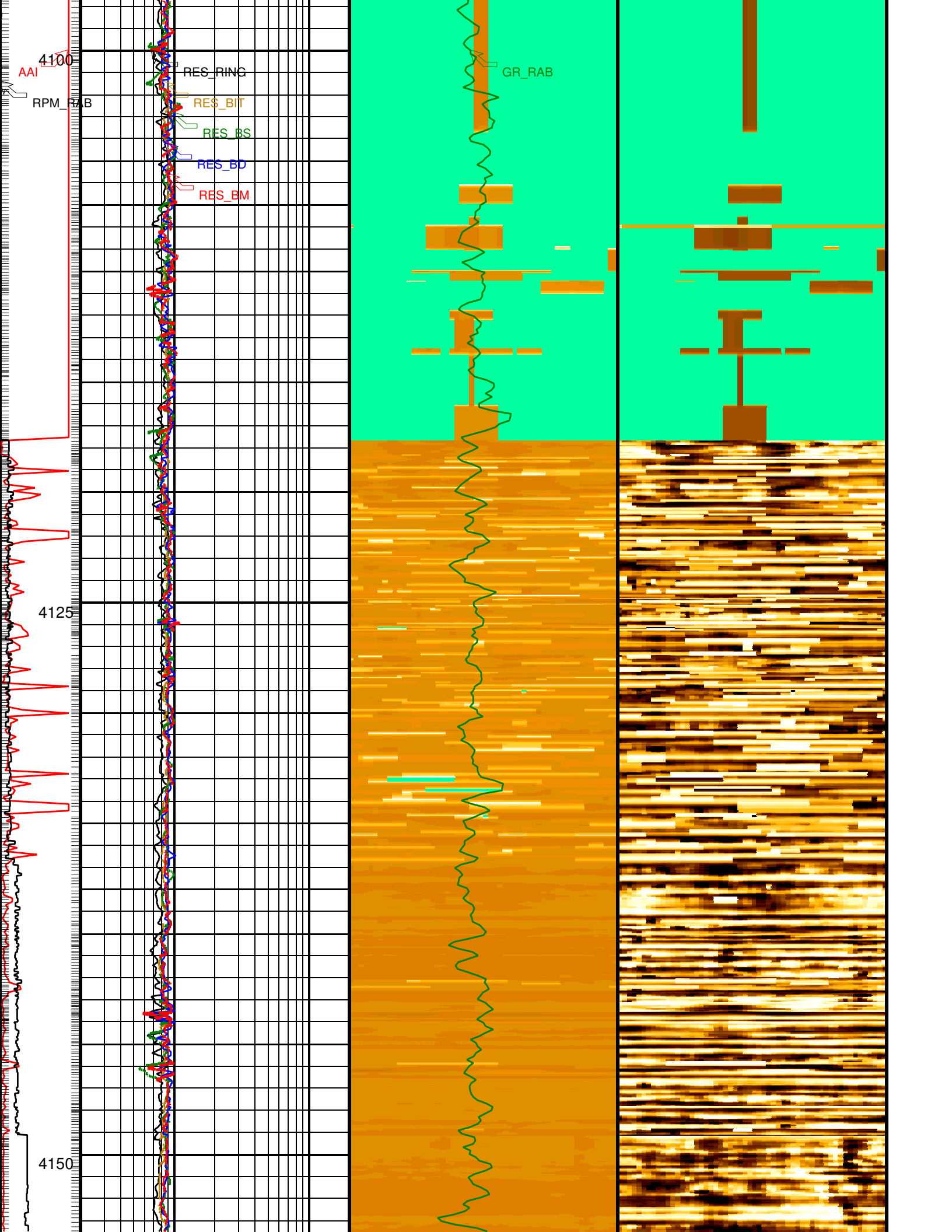
DLIS Name	Description	Value
DO	Depth Offset	0.0 m

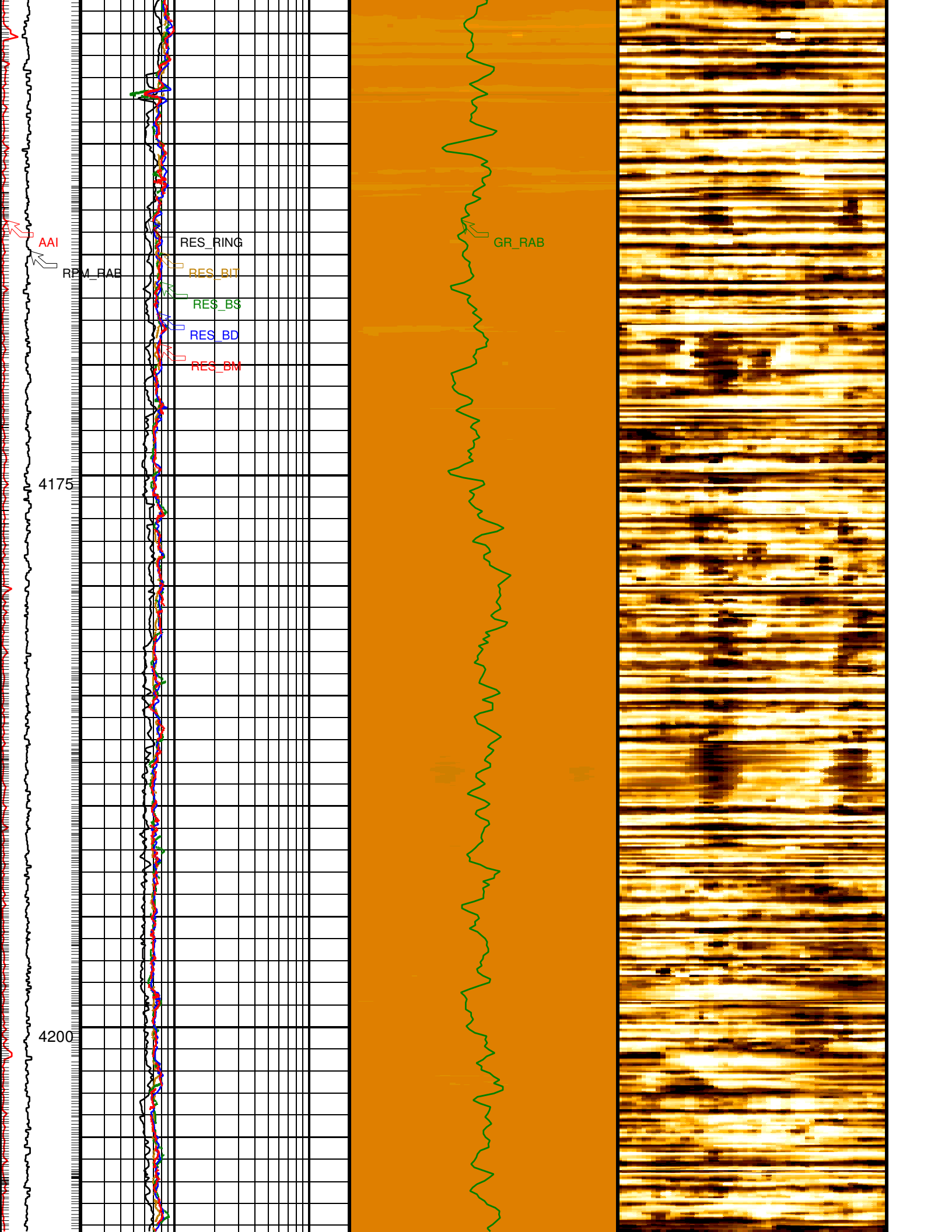
PIP SUMMARY

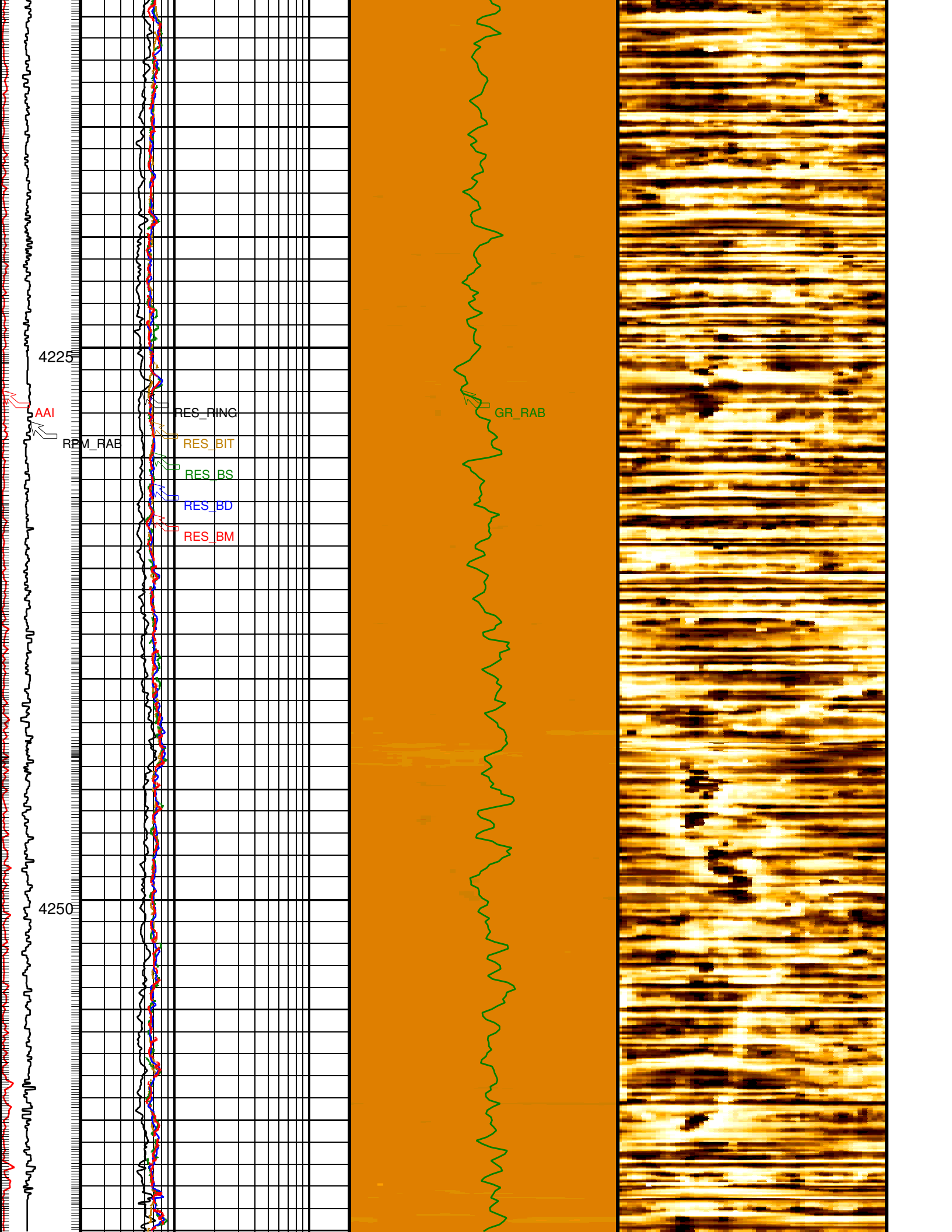
Ring Samples
 Gamma Ray Samples

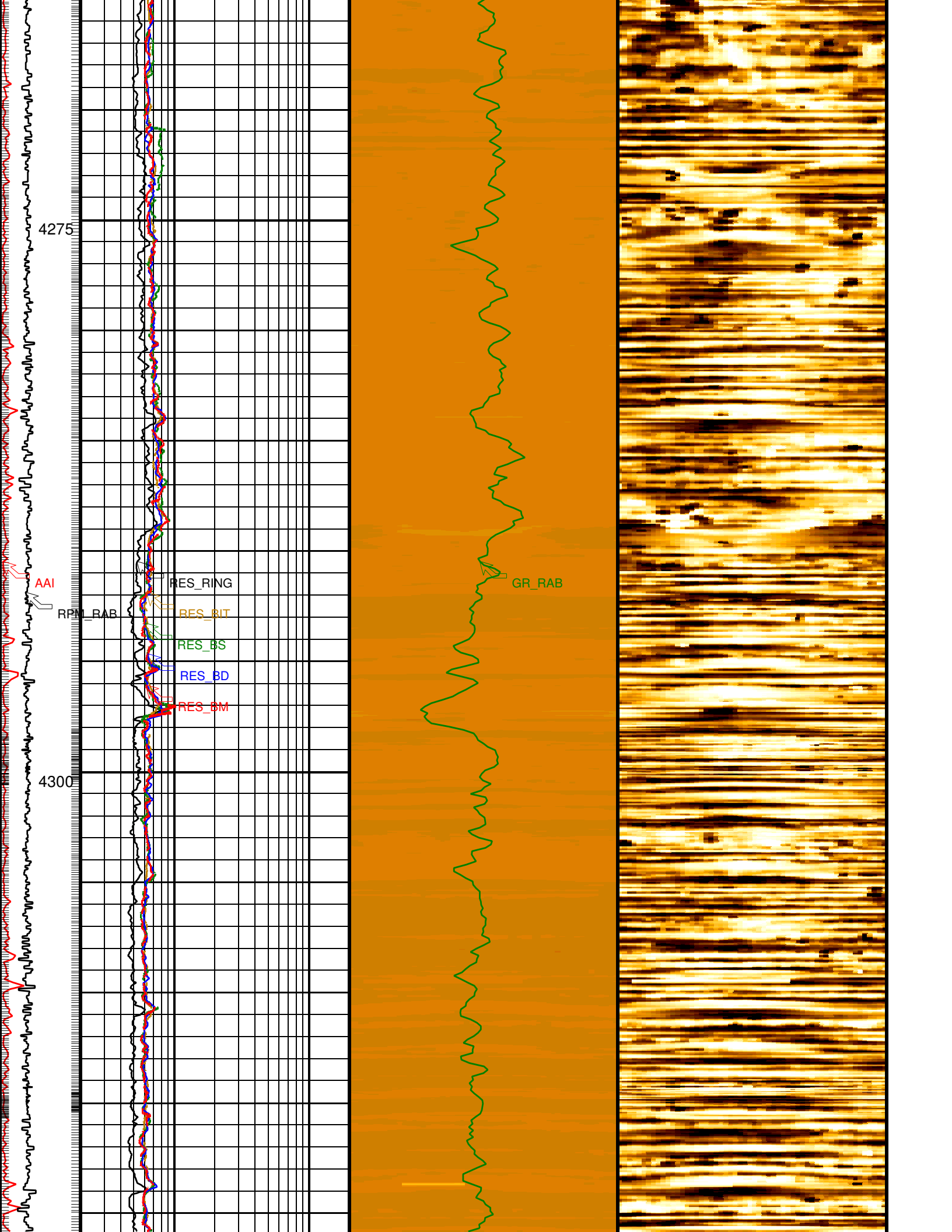
	Medium Button Resistivity (RES_BM) 0.2 (OHMM) 20		
	Deep Button Resistivity (RES_BD) 0.2 (OHMM) 20		
	Shallow Button Resistivity (RES_BS) 0.2 (OHMM) 20		
RAB Rotational Speed (RPM_RAB) (RPM) 0 300	Bit Resistivity (RES_BIT) 0.2 (OHMM) 20	Absent 0.031 0.071 0.171 0.401 1.001 2.201 4.201 7.001 10.400 15.800 	Deep Button Image (R3IM_HI) (OHMM)
Angular Acceleration Indicator (AAI) (----) 0 300	Ring Resistivity (RES_RING) 0.2 (OHMM) 20	RAB Gamma Ray (GR_RAB) 0 (GAPI) 150	 Conductive Resistive (R3IM_DYN HI) (----)

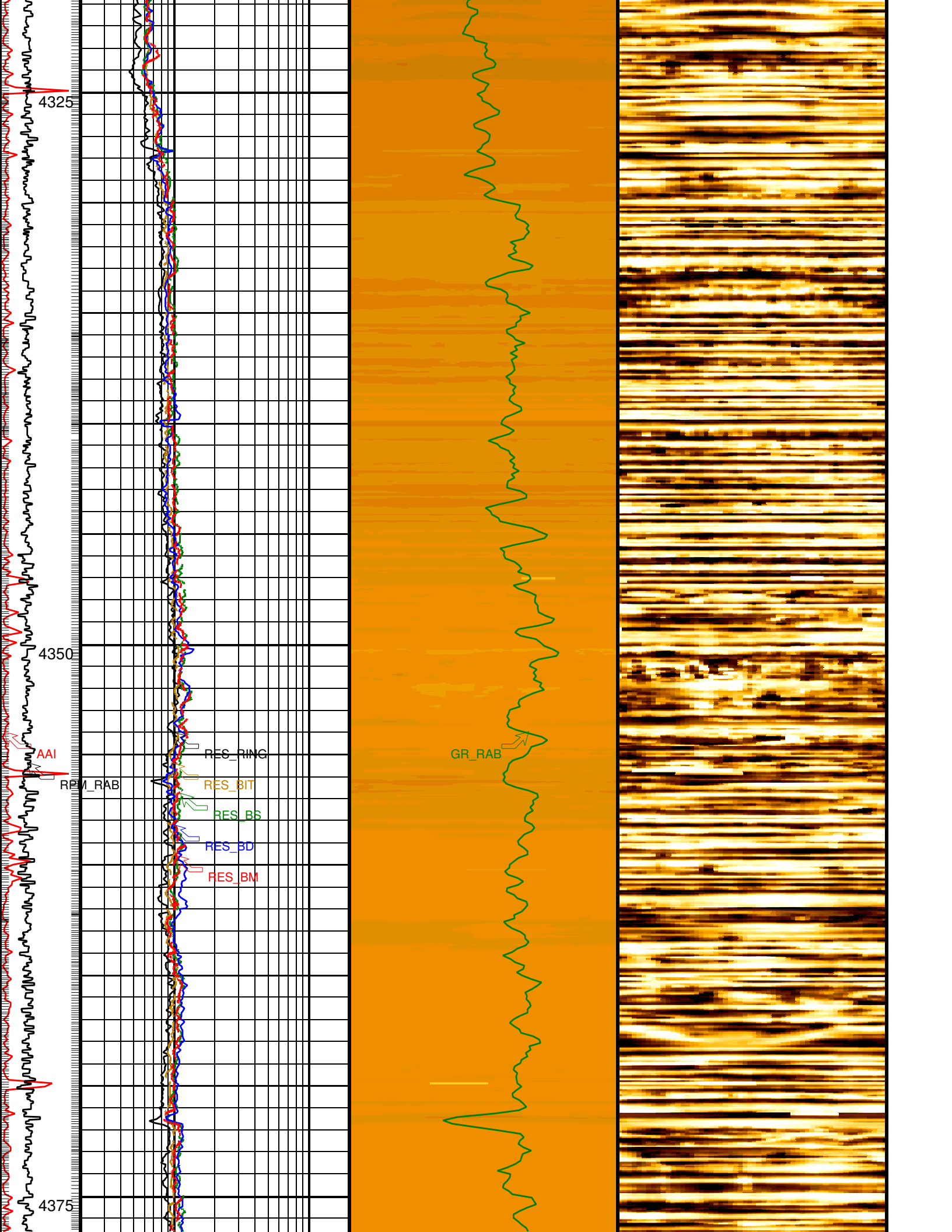


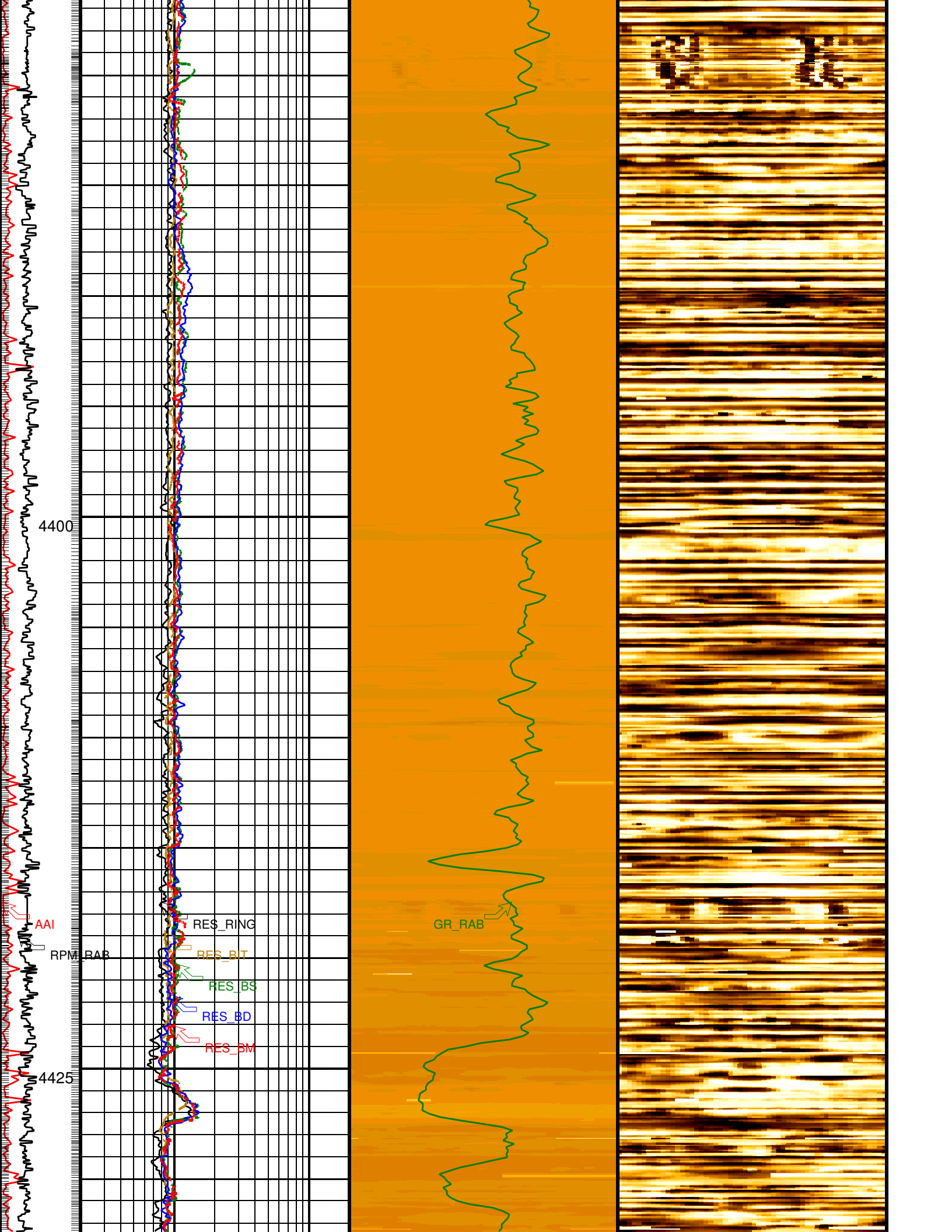


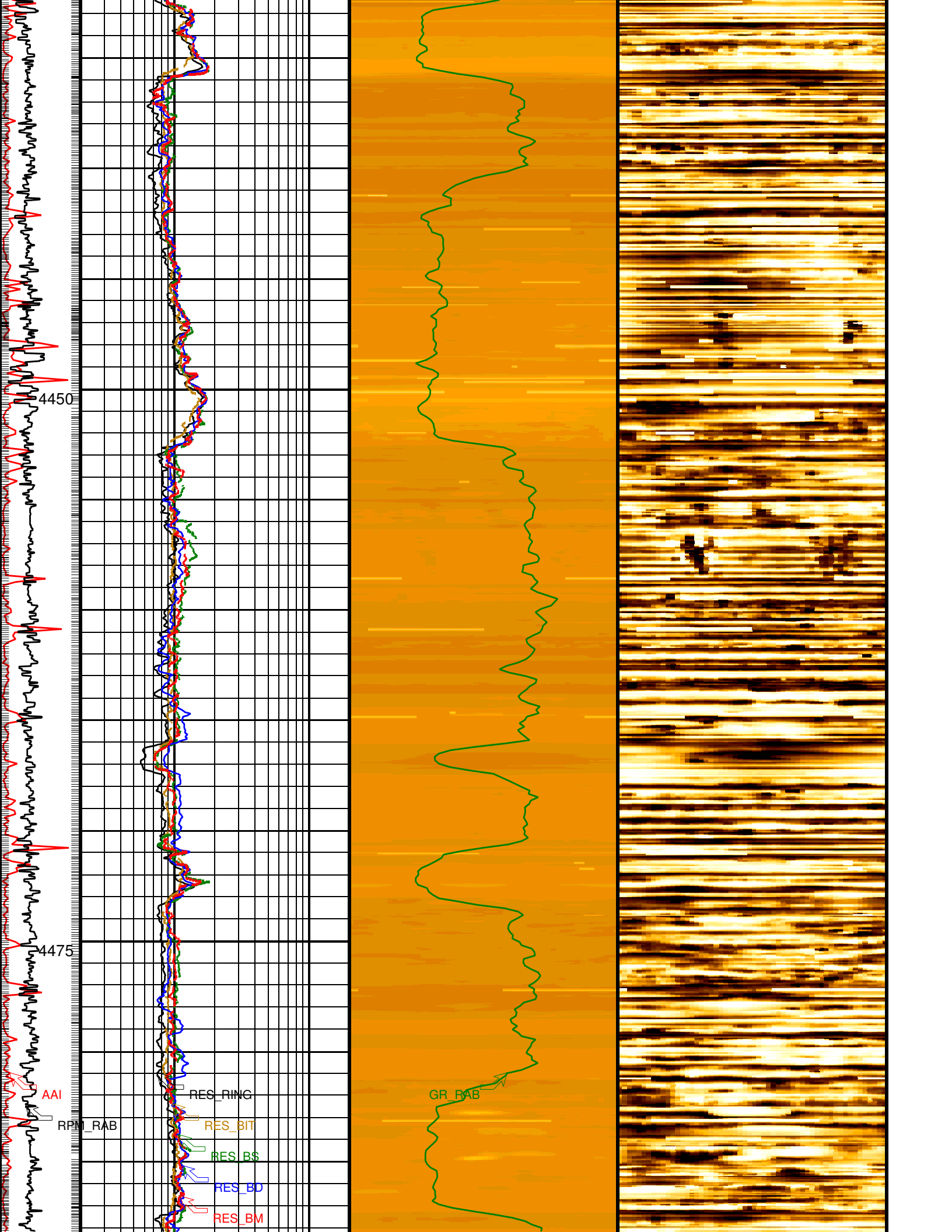


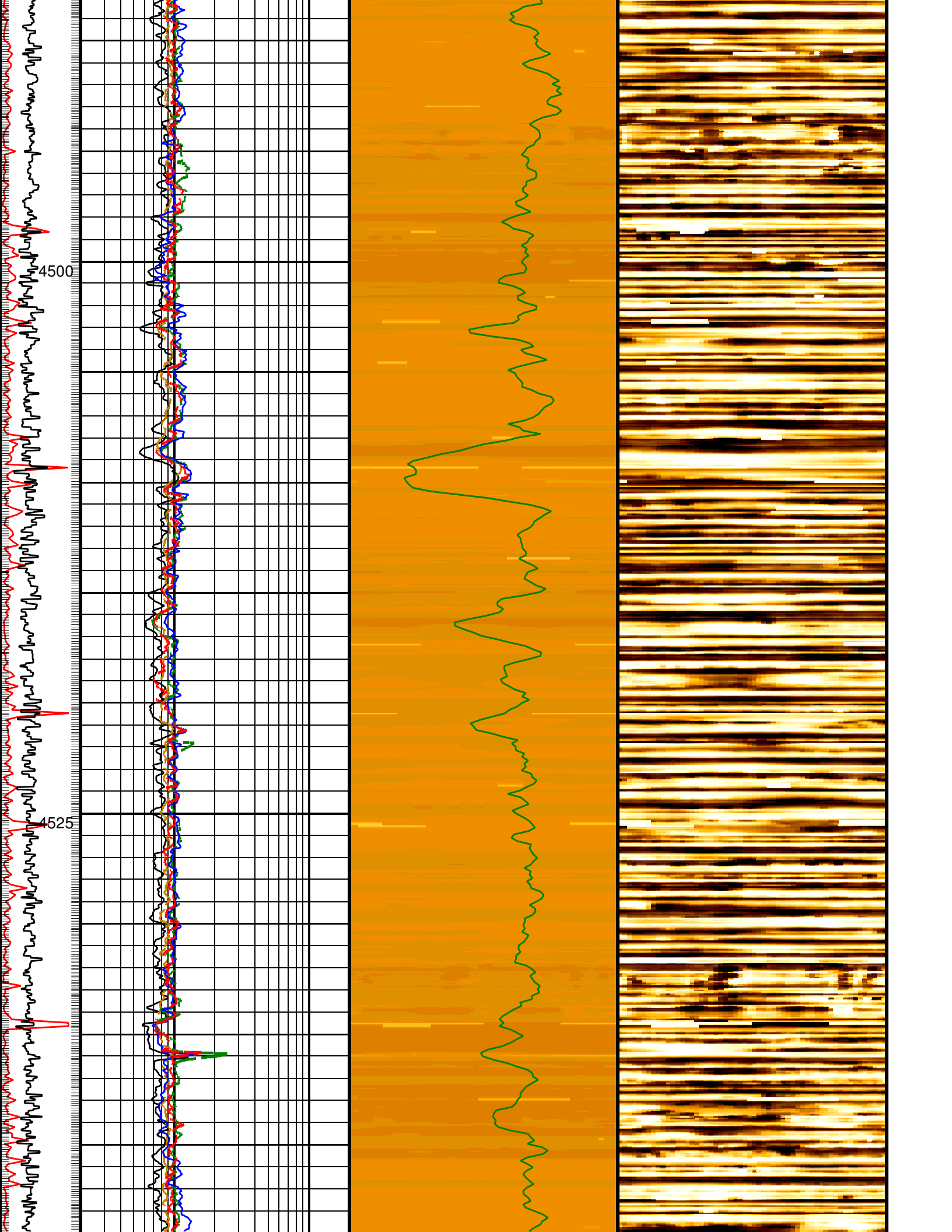


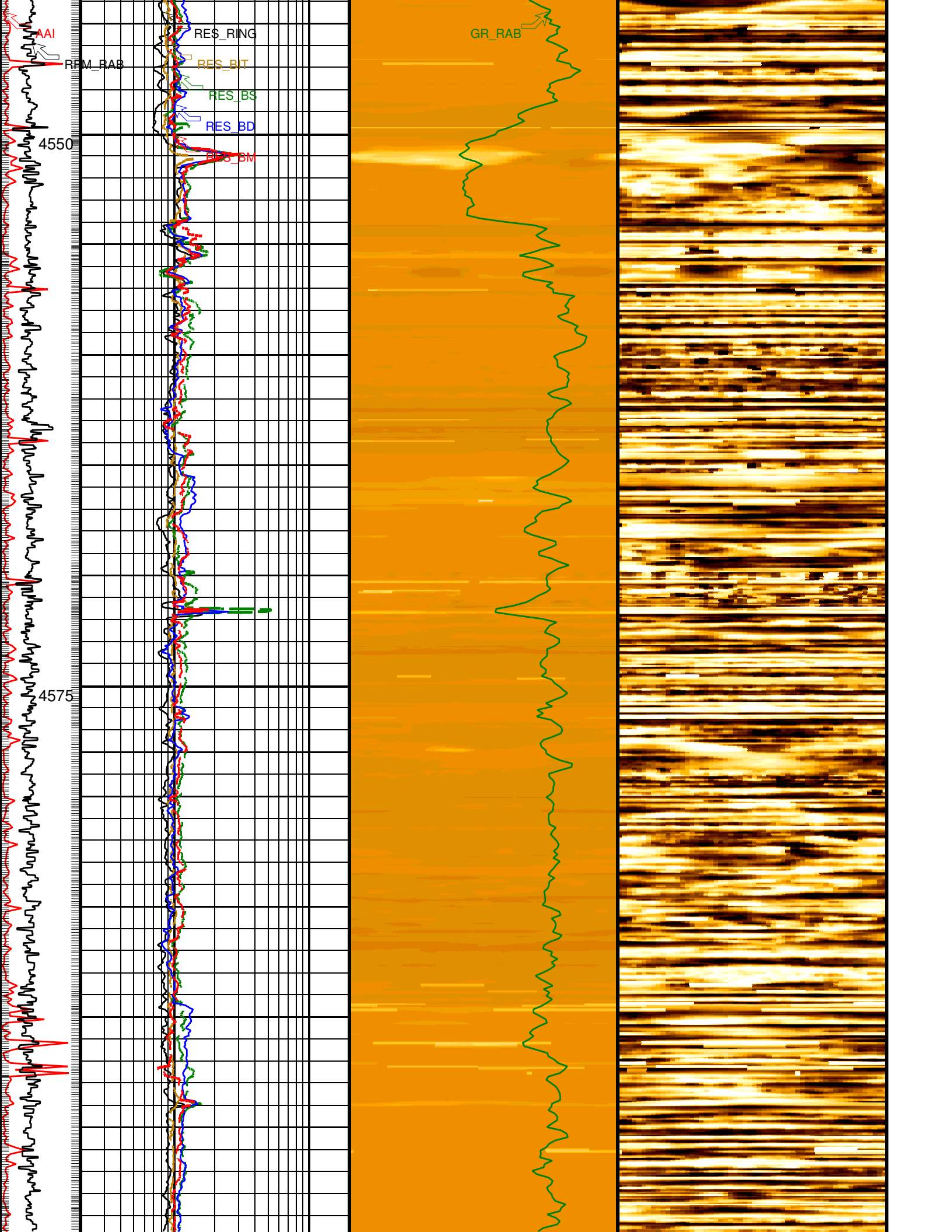


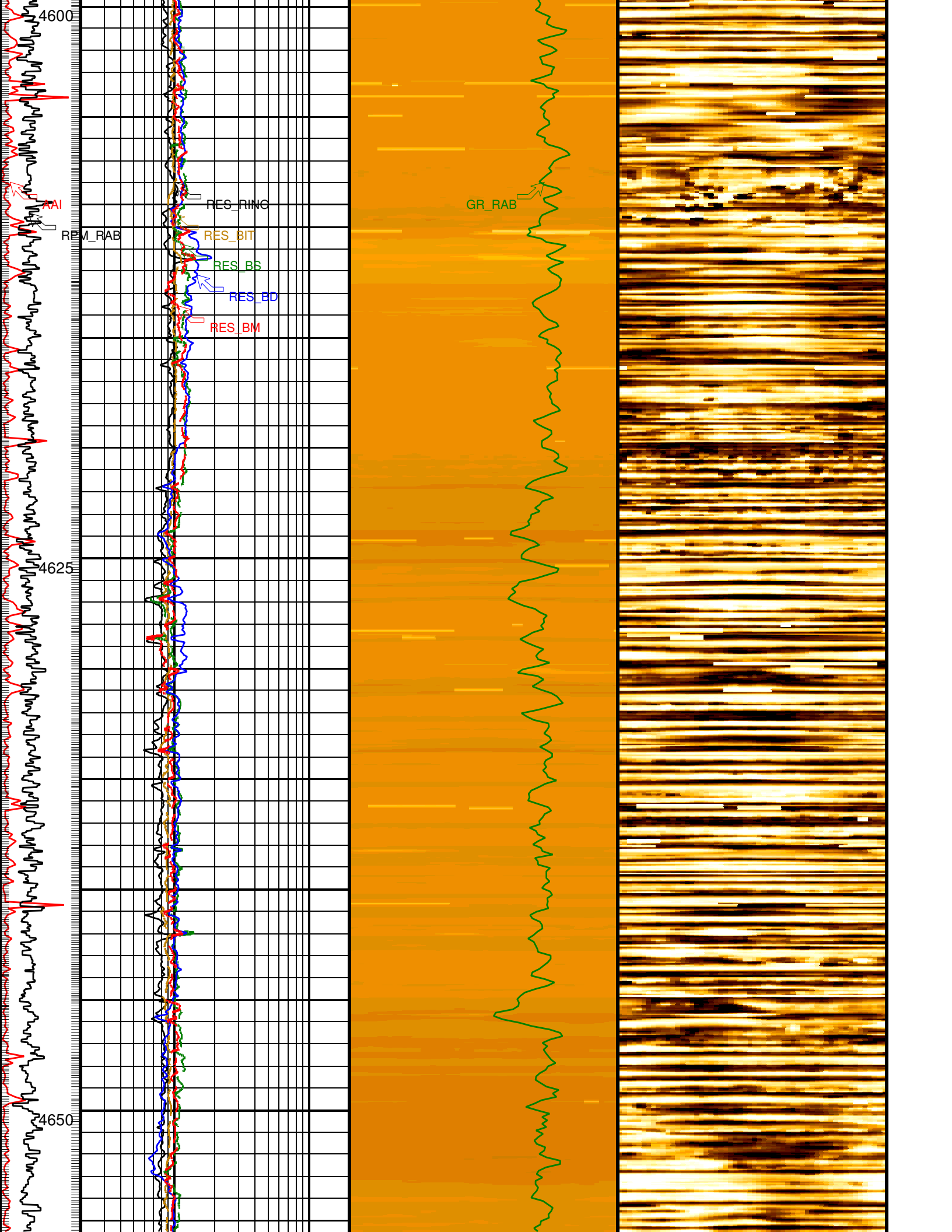


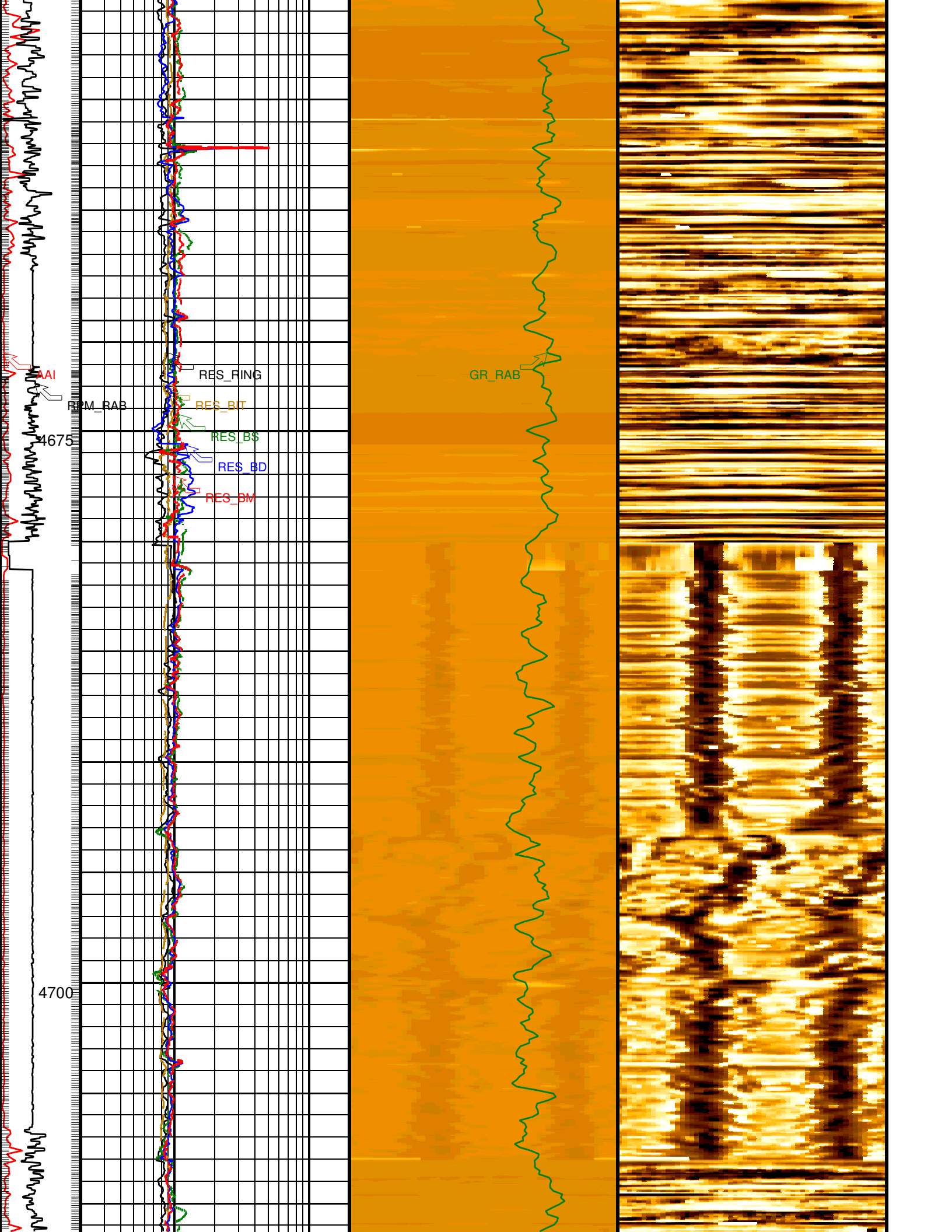


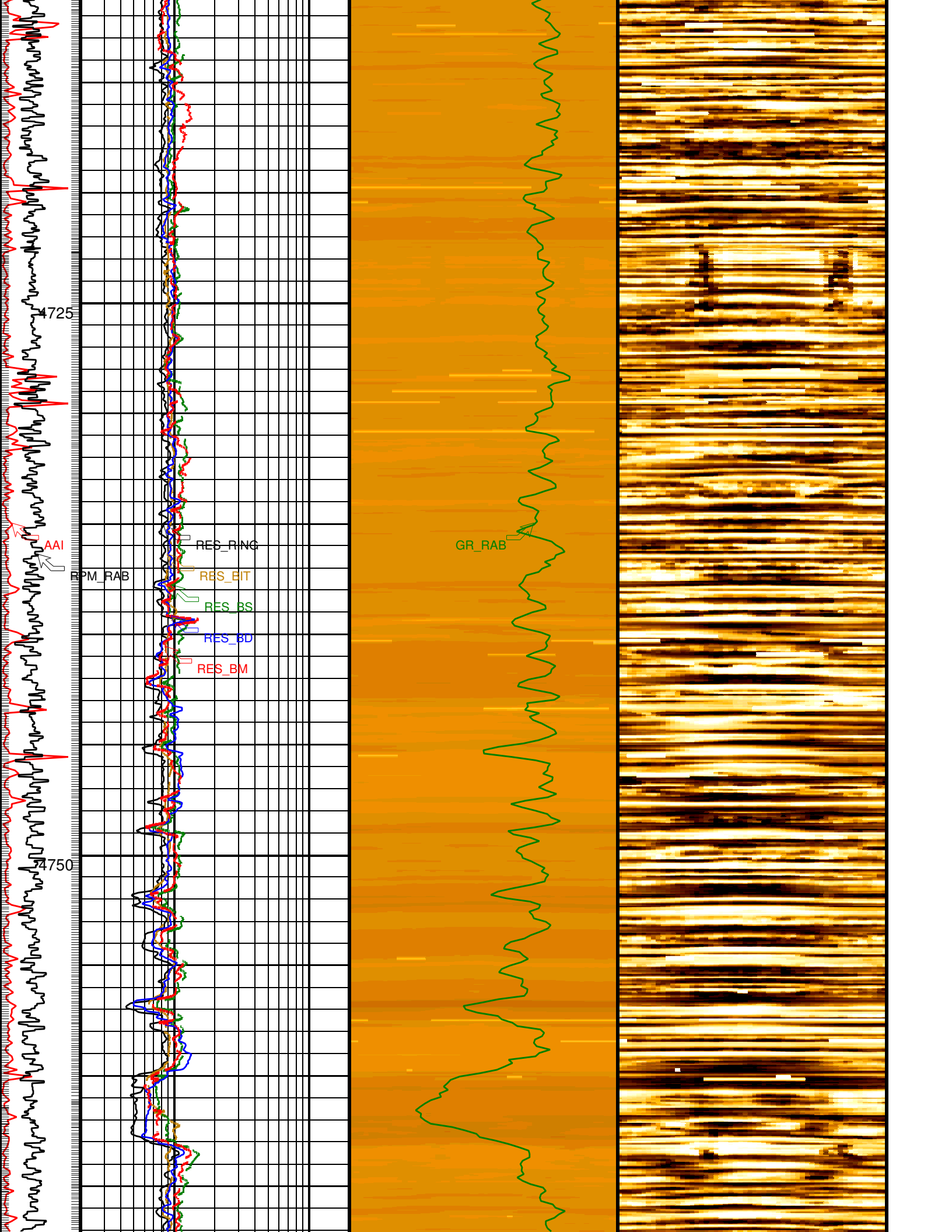


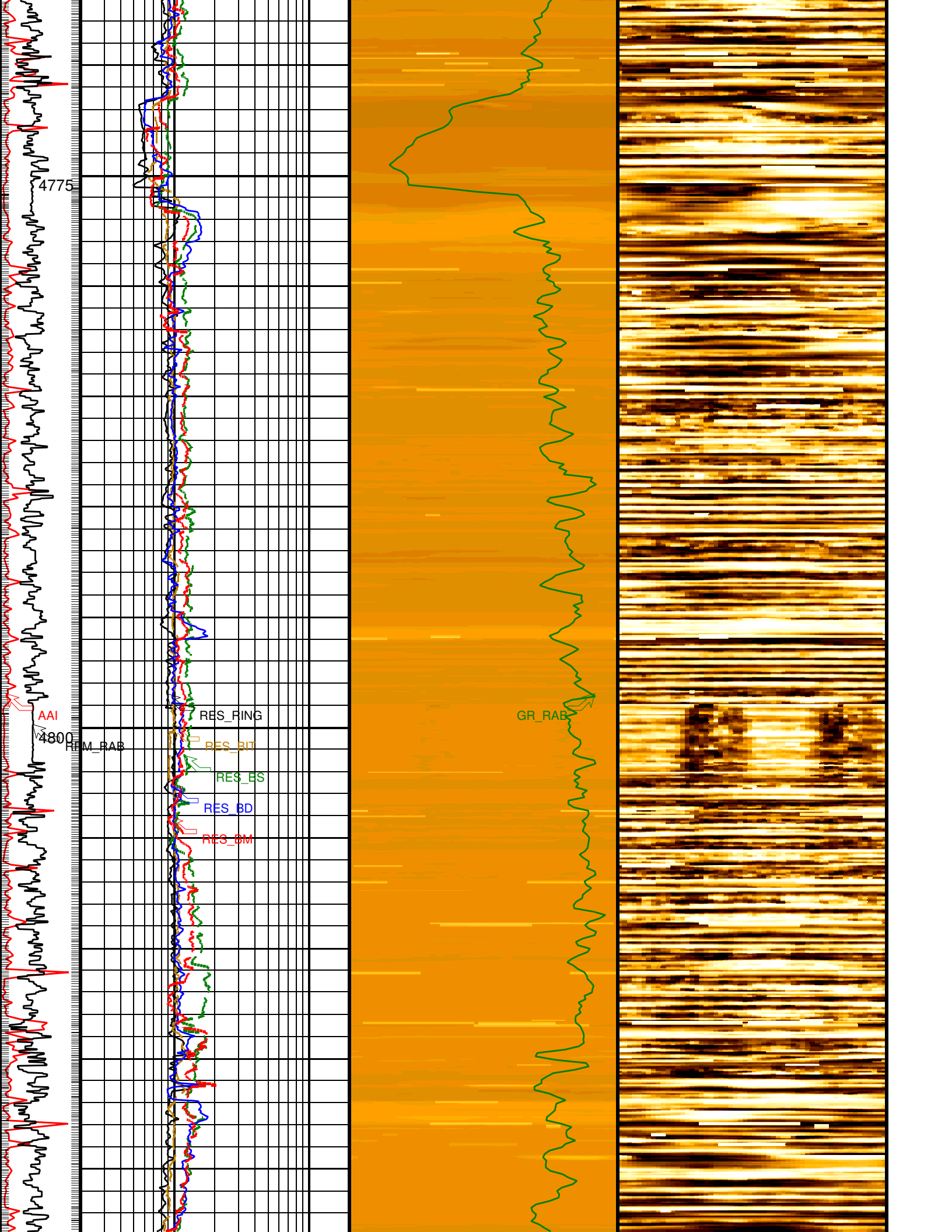


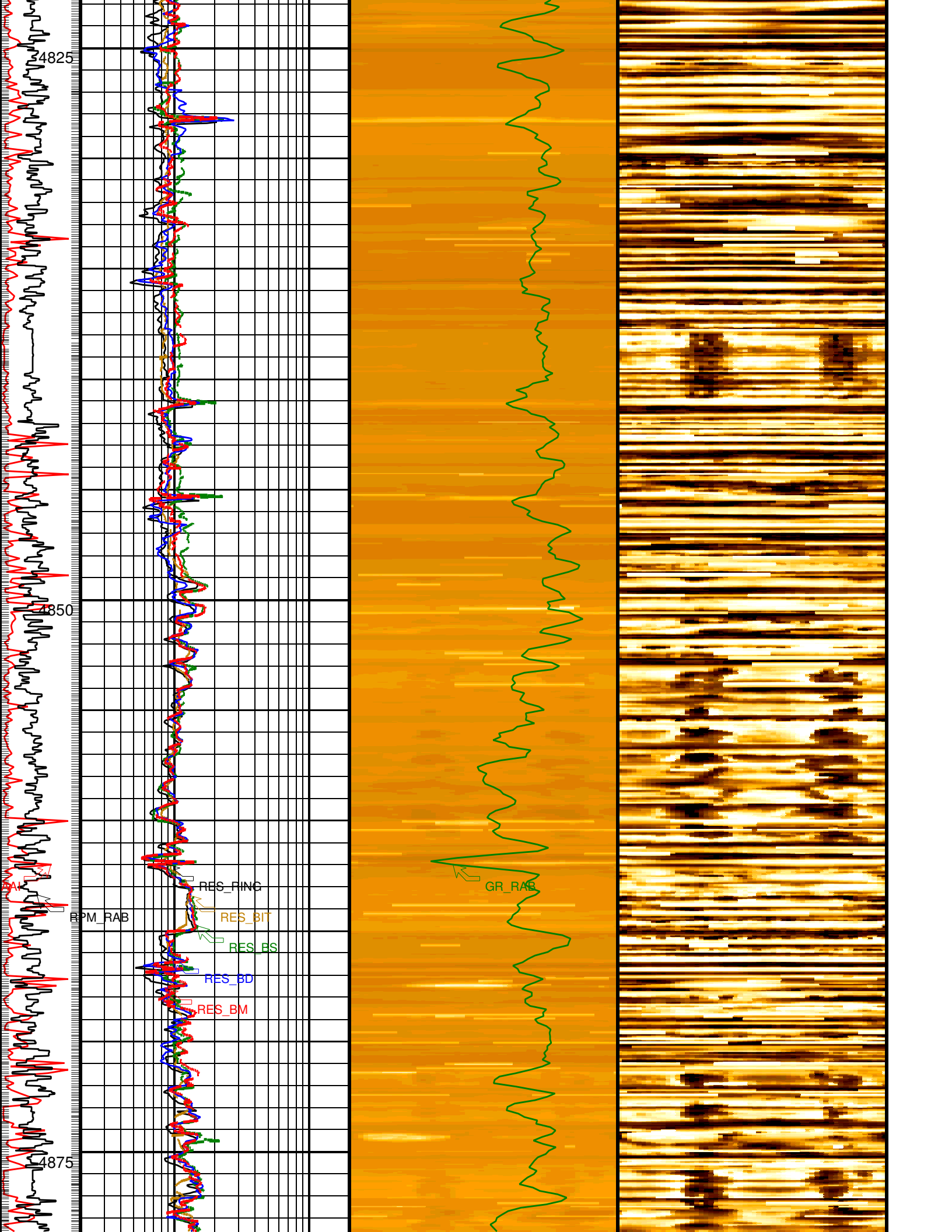


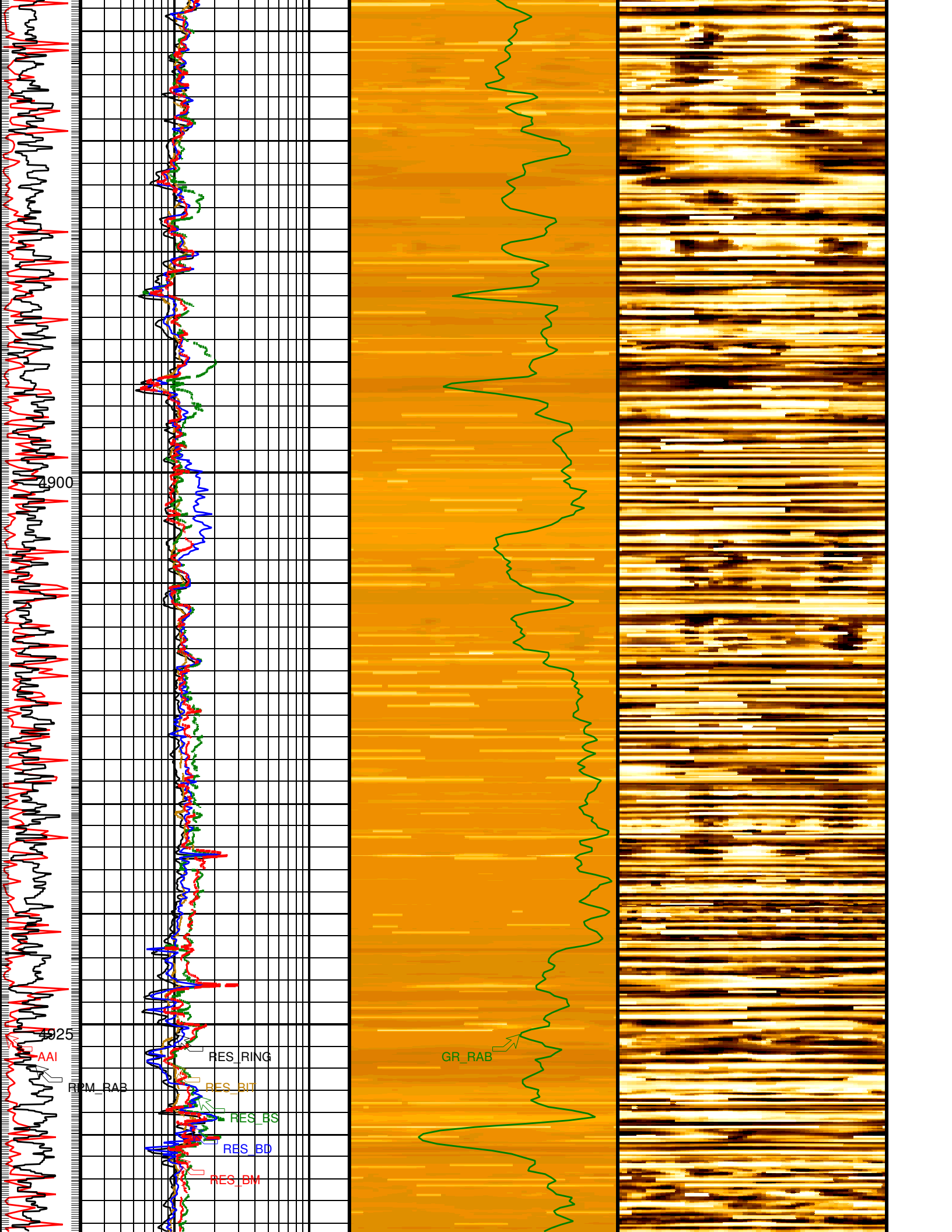


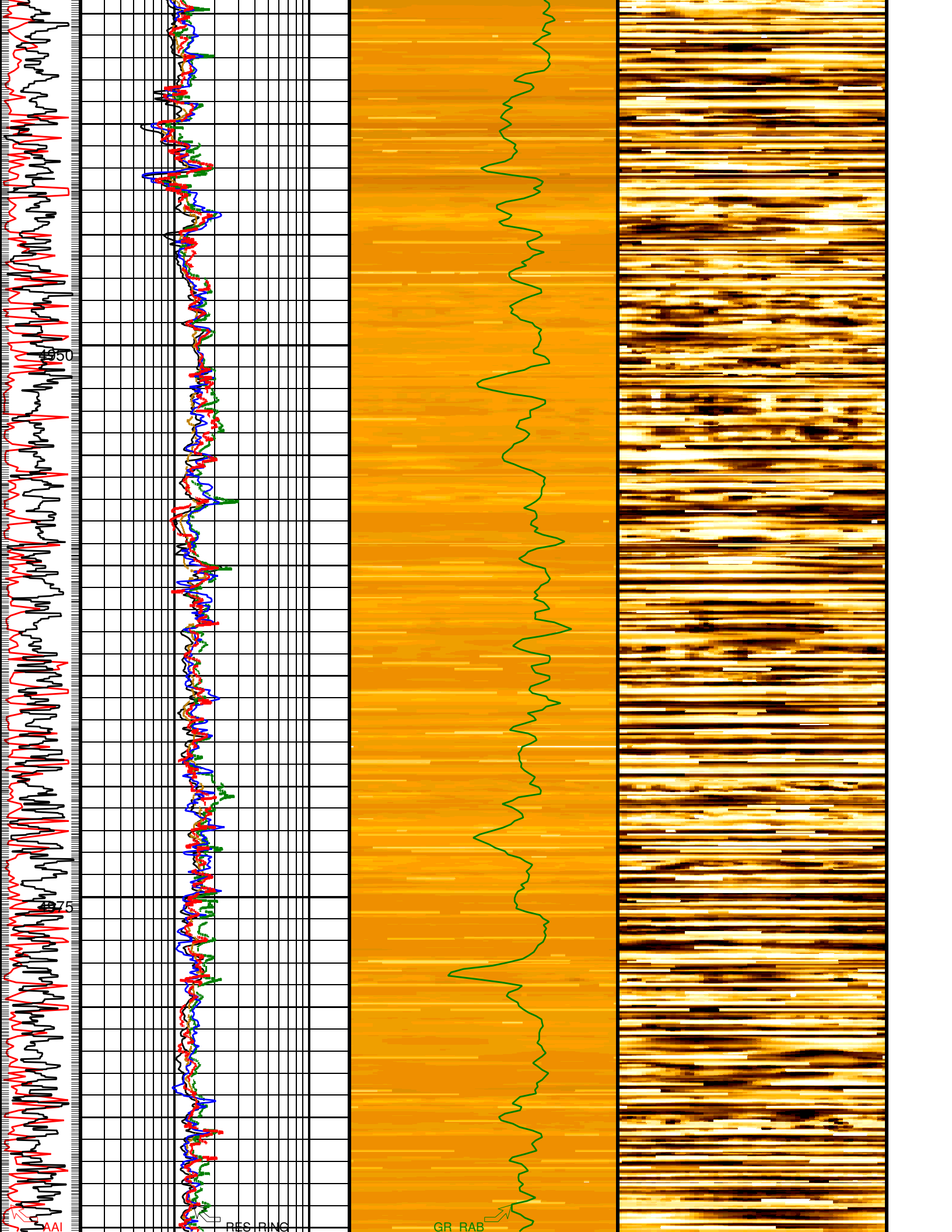


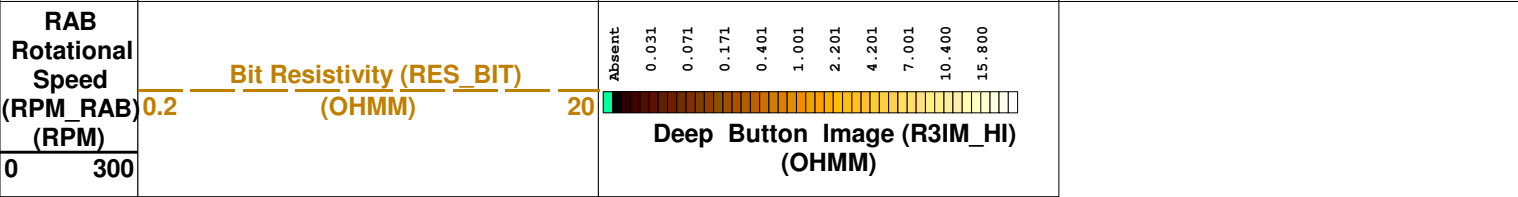
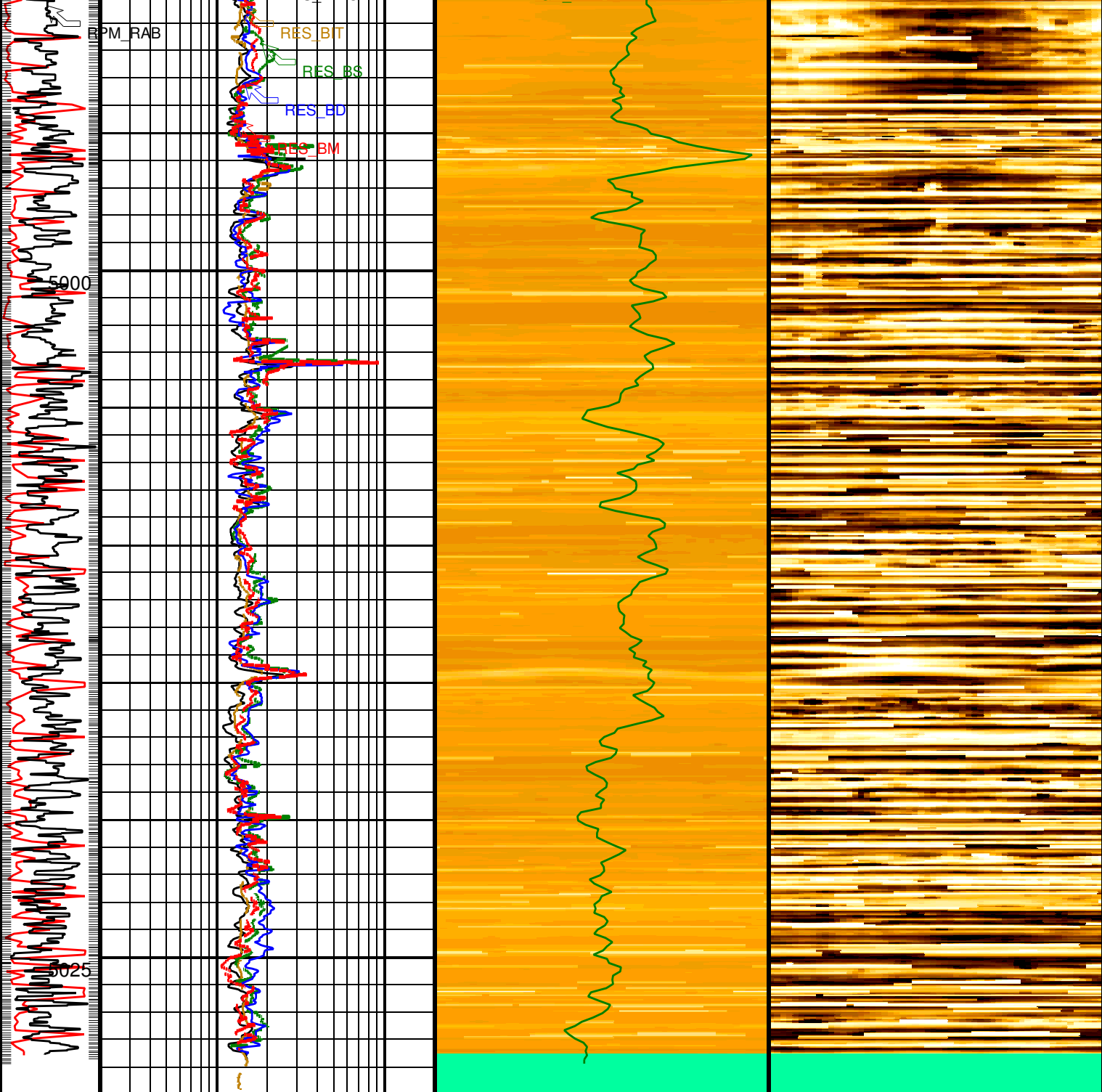












0.2

(OHMM)

20

PIP SUMMARY

└ Ring Samples

└ Gamma Ray Samples

IDEAL Version: ID14_0C_12
IDF

Input DLIS Files

SAVE

File ID:Run_1

FN:19 03-Sep-2009 15:43

13148.0 FT

16503.0 FT