

arcVISION Processed eCaliper C0002R 4739.7m - 4803.4m (TVDSS 1:200)

* A Mark of Schlumberger

COMPANY:	MCJ / JAMSTEC				
WELL:	C0002R				
FIELD:	Nankai-Kumano				
STATE:	Wakayama				
COUNTRY:	Japan				
Date Processed:	12 Jan 2019	Date Logged:	10 Jan 2019		
Job Number:	JPJ-2018-010	Processed at:	JPJ		
Rig Name:	Chikyu				
Latitude:	33° 18' 3.04" N	Longitude:	136° 38' 12.17" E		
Elevation:	KB: 28.500 m	DF:	28.500 m	GL:	-1939.000 m

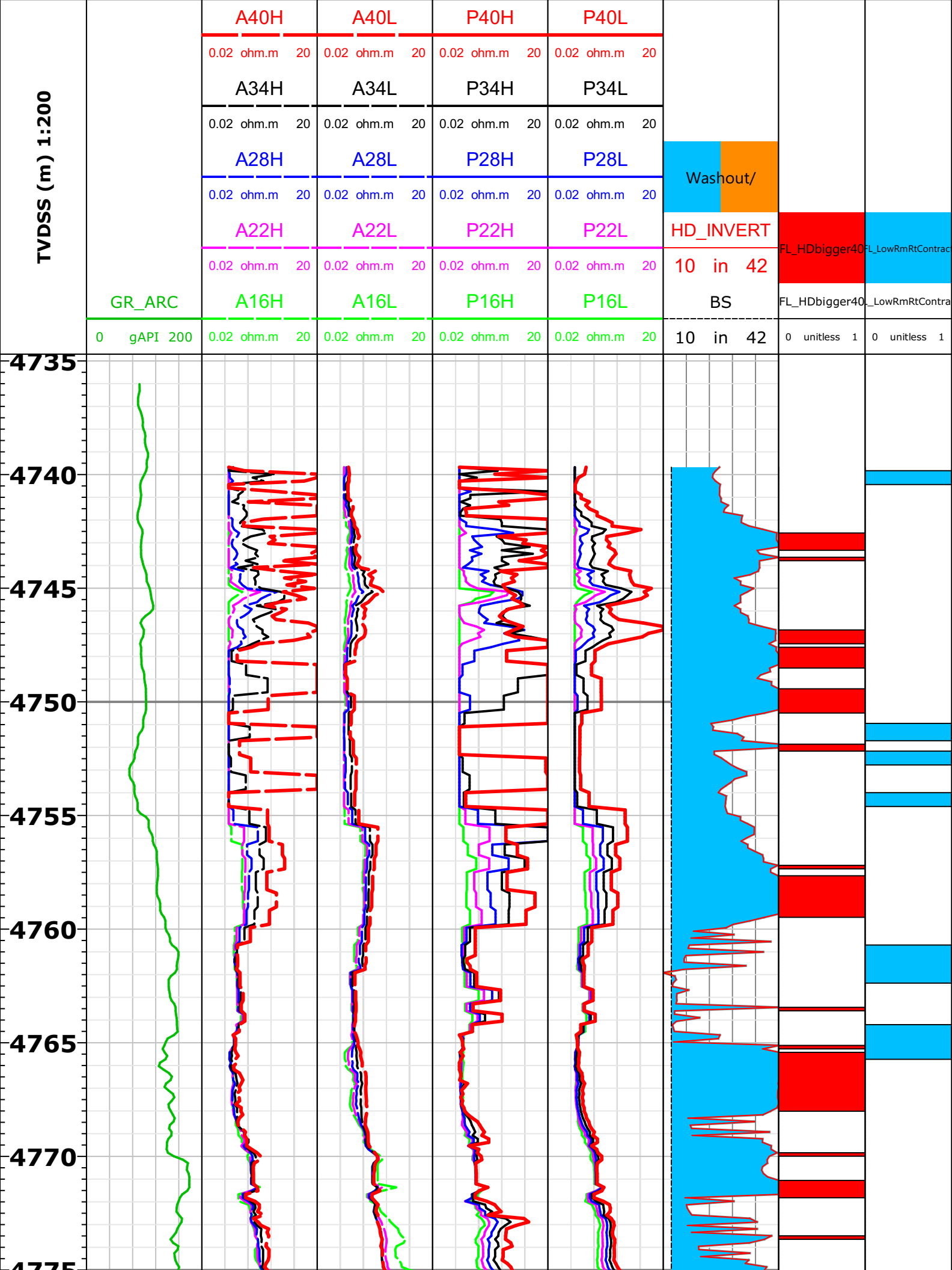
FOLD HERE: The well name, location and borehole reference data were furnished by the customer.

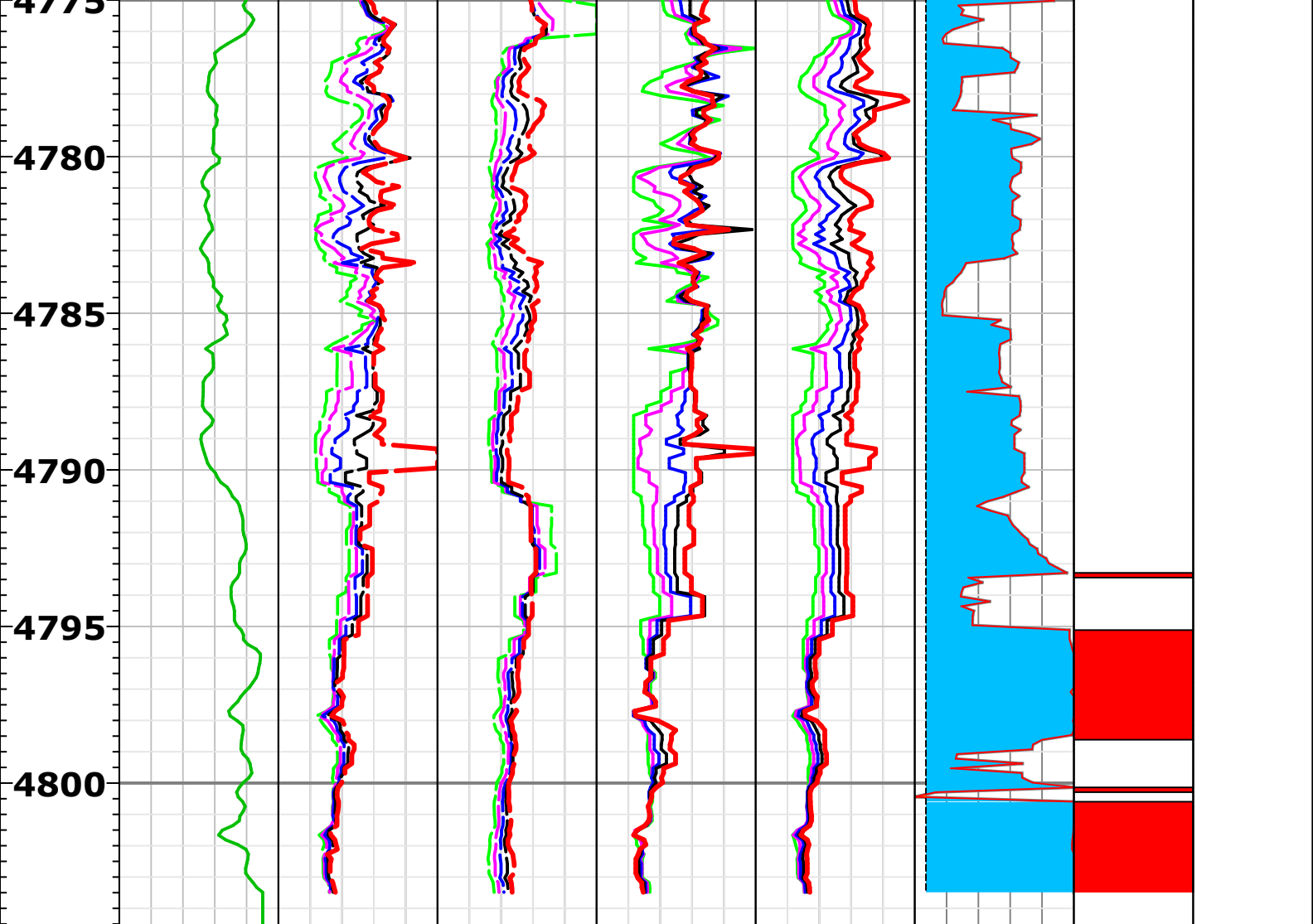
Any interpretation, research, analysis, data, results, estimates, or recommendation furnished with the services or otherwise communicated by Schlumberger to the customer at any time in connection with the services are opinions based on inferences from measurements, empirical relationships, and/or assumptions; which, inferences, empirical relationships and/or assumptions are not infallible and with respect to which professionals in the industry may differ. Accordingly, Schlumberger cannot and does not warrant the accuracy, correctness, or completeness of any such interpretation, research, analysis, data, results, estimates, or recommendation. The customer acknowledges that it is accepting the services "as is," that Schlumberger makes no representation or warranty, express or implied, of any kind or description in respect thereto, and that such services are delivered with the explicit understanding and agreement that any action taken based on the services received shall be at its own risk and responsibility, and no claim shall be made against Schlumberger as a consequence thereof.

Svc. Order #:	Interpretation Center:	Analyst: XIA	Process Date: 12 Jan 2019
Location:	Techlog Vers: 2017.2		

Remarks:

Resistivity logs are from arcVISION.
HD_INVERT is eCaliper result from arcVISION.
Blue flag in the last track shows the intervals where low formation resistivity and mud resistivity contrast.
arcVISION eCaliper is unreliable in such intervals.
Red flag in the last second track shows the intervals where HD_INVERTED is bigger than 40in. arcVISION eCaliper is unreliable in such intervals





TVDSS (m) 1:200		A40H	A40L	P40H	P40L			
		0.02 ohm.m 20	0.02 ohm.m 20	0.02 ohm.m 20	0.02 ohm.m 20			
		A34H	A34L	P34H	P34L			
		0.02 ohm.m 20	0.02 ohm.m 20	0.02 ohm.m 20	0.02 ohm.m 20			
		A28H	A28L	P28H	P28L	Washout/		
		0.02 ohm.m 20	0.02 ohm.m 20	0.02 ohm.m 20	0.02 ohm.m 20	HD_INVERT		
		A22H	A22L	P22H	P22L	10 in 42		
	0.02 ohm.m 20	0.02 ohm.m 20	0.02 ohm.m 20	0.02 ohm.m 20				
	GR_ARC	A16H	A16L	P16H	P16L	BS		
	0 gAPI 200	0.02 ohm.m 20	0.02 ohm.m 20	0.02 ohm.m 20	0.02 ohm.m 20	10 in 42	0 unitless 1	0 unitless 1

COMPANY: MQJ/JAMSTEC
 WELL: C002R
 FIELD: Nankai-Kumano
 COUNTRY: Japan



Date Logged: 10 Jan 2019
 Date Processed: 12 Jan 2019
 Surface Location: 33° 18' 3.04" N 136° 38' 12.17"E

Elevations: KB: DF: 28.500 m GL: -1939.000 m
API Number: JPJ-2018-010