

arcVISION Processed eCaliper C0002R 4739.7m - 4803.4m (TVDSS 1:500)

* A Mark of Schlumberger

COMPANY:	MCJ / JAMSTEC		
WELL:	C0002R		
FIELD:	Nankai-Kumano		
STATE:	Wakayama		
COUNTRY:	Japan		
Date Processed:	12 Jan 2019	Date Logged:	10 Jan 2019
Job Number:	JPJ-2018-010	Processed at:	JPJ
Rig Name:	Chikyu		
Latitude:	33° 18' 3.04" N	Longitude:	136° 38' 12.17" E
Elevation:	KB: 28.500 m	DF: 28.500 m	GL: -1939.000 m

FOLD HERE: The well name, location and borehole reference data were furnished by the customer.

Any interpretation, research, analysis, data, results, estimates, or recommendation furnished with the services or otherwise communicated by Schlumberger to the customer at any time in connection with the services are opinions based on inferences from measurements, empirical relationships, and/or assumptions; which, inferences, empirical relationships and/or assumptions are not infallible and with respect to which professionals in the industry may differ. Accordingly, Schlumberger cannot and does not warrant the accuracy, correctness, or completeness of any such interpretation, research, analysis, data, results, estimates, or recommendation. The customer acknowledges that it is accepting the services "as is," that Schlumberger makes no representation or warranty, express or implied, of any kind or description in respect thereto, and that such services are delivered with the explicit understanding and agreement that any action taken based on the services received shall be at its own risk and responsibility, and no claim shall be made against Schlumberger as a consequence thereof.

Svc. Order #:	Interpretation Center:	Analyst: XIA	Process Date: 12 Jan 2019
Location:	Techlog Vers: 2017.2		

Remarks:

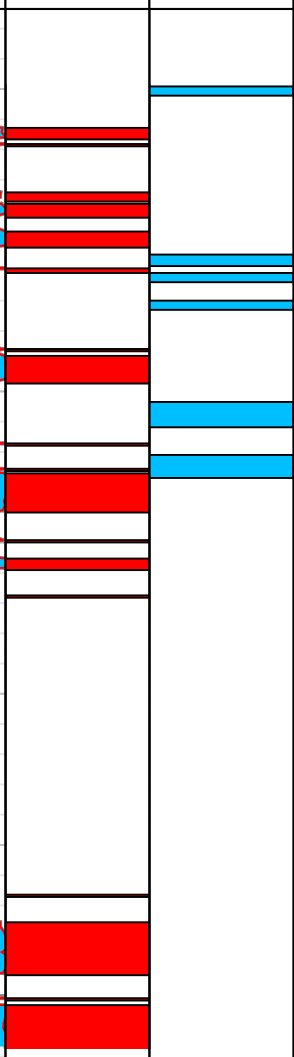
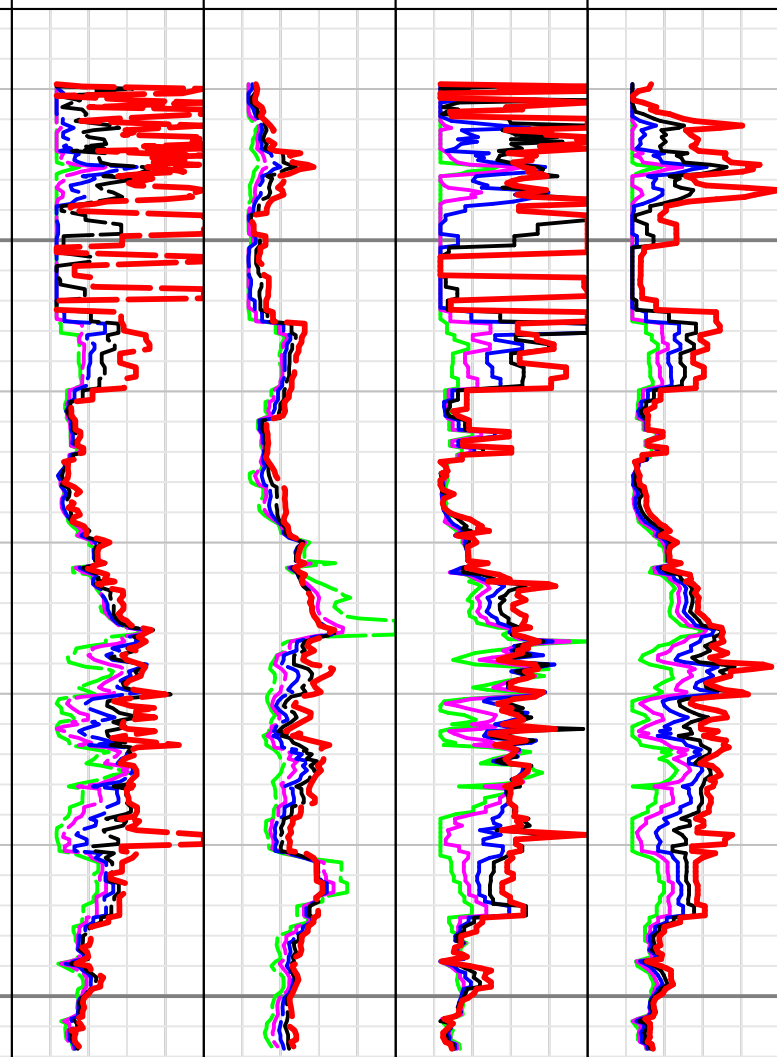
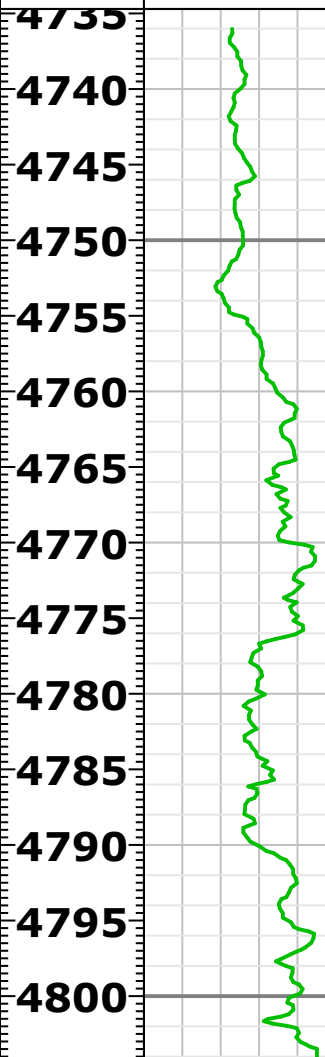
Resistivity logs are from arcVISION.
HD_INVERT is eCaliper result from arcVISION.
Blue flag in the last track shows the intervals where low formation resistivity and mud resistivity contrast.
arcVISION eCaliper is unreliable in such intervals.
Red flag in the last second track shows the intervals where HD_INVERTED is bigger than 40in. arcVISION eCaliper is unreliable in such intervals

TVDSS (m) 1:500

A40H	A40L	P40H	P40L	
0.02 ohm.m 20	0.02 ohm.m 20	0.02 ohm.m 20	0.02 ohm.m 20	
A34H	A34L	P34H	P34L	
0.02 ohm.m 20	0.02 ohm.m 20	0.02 ohm.m 20	0.02 ohm.m 20	
A28H	A28L	P28H	P28L	
0.02 ohm.m 20	0.02 ohm.m 20	0.02 ohm.m 20	0.02 ohm.m 20	
A22H	A22L	P22H	P22L	
0.02 ohm.m 20	0.02 ohm.m 20	0.02 ohm.m 20	0.02 ohm.m 20	
GR_ARC	A16H	A16L	P16H	P16L
0 gAPI 200	0.02 ohm.m 20	0.02 ohm.m 20	0.02 ohm.m 20	0.02 ohm.m 20

Washout/
HD_INVERT
10 in 42
BS
10 in 42

FL_HDbigger40	FL_LowRmRtContract
FL_HDbigger40	FL_LowRmRtContract
0 unitless 1	0 unitless 1



TVDSS (m) 1:500

A40H	A40L	P40H	P40L
0.02 ohm.m 20	0.02 ohm.m 20	0.02 ohm.m 20	0.02 ohm.m 20
A34H	A34L	P34H	P34L
0.02 ohm.m 20	0.02 ohm.m 20	0.02 ohm.m 20	0.02 ohm.m 20
A28H	A28L	P28H	P28L
0.02 ohm.m 20	0.02 ohm.m 20	0.02 ohm.m 20	0.02 ohm.m 20
A22H	A22L	P22H	P22L
0.02 ohm.m 20	0.02 ohm.m 20	0.02 ohm.m 20	0.02 ohm.m 20

Washout/
HD_INVERT
10 in 42

FL_HDbigger40	FL_LowRmRtContract
---------------	--------------------

GR_ARC	A16H	A16L	P16H	P16L	BS	FL_HDbigger40	LowRmRtContra
0 gAPI 200	0.02 ohm.m 20	0.02 ohm.m 20	0.02 ohm.m 20	0.02 ohm.m 20	10 in 42	0 unitless 1	0 unitless 1

COMPANY: MQJ/JAMSTEC
 WELL: C0002R
 FIELD: Nankai-Kumano
 COUNTRY: Japan



Date Logged: 10 Jan 2019
 Date Processed: 12 Jan 2019
 Surface Location: 33° 18' 3.04" N 136° 38' 12.17"E

Elevations: KB: DF: 28.500 m GL: -1939.000 m
 API Number: JPJ-2018-010