

MicroScope Processed eCaliper

C0002S

4803.13m - 4874.45m (MD 1:200)

* A Mark of Schlumberger

COMPANY: MQJ / JAMSTEC
WELL: C0002S
FIELD: Nankai-Kumano
STATE: Wakayama
COUNTRY: Japan

Date Processed: 9 Feb 2019 Date Logged: 5 Feb 2019

Job Number: JPJ-2018-010 Processed at JPJ

Rig Name: Chikyu

Latitude: 33° 18' 3.04" N Longitude: 136° 38' 12.17" E

Elevation: KB: DF: 28.5 m GL: -1939 m

FOLD HERE: The well name, location and borehole reference data were furnished by the customer.

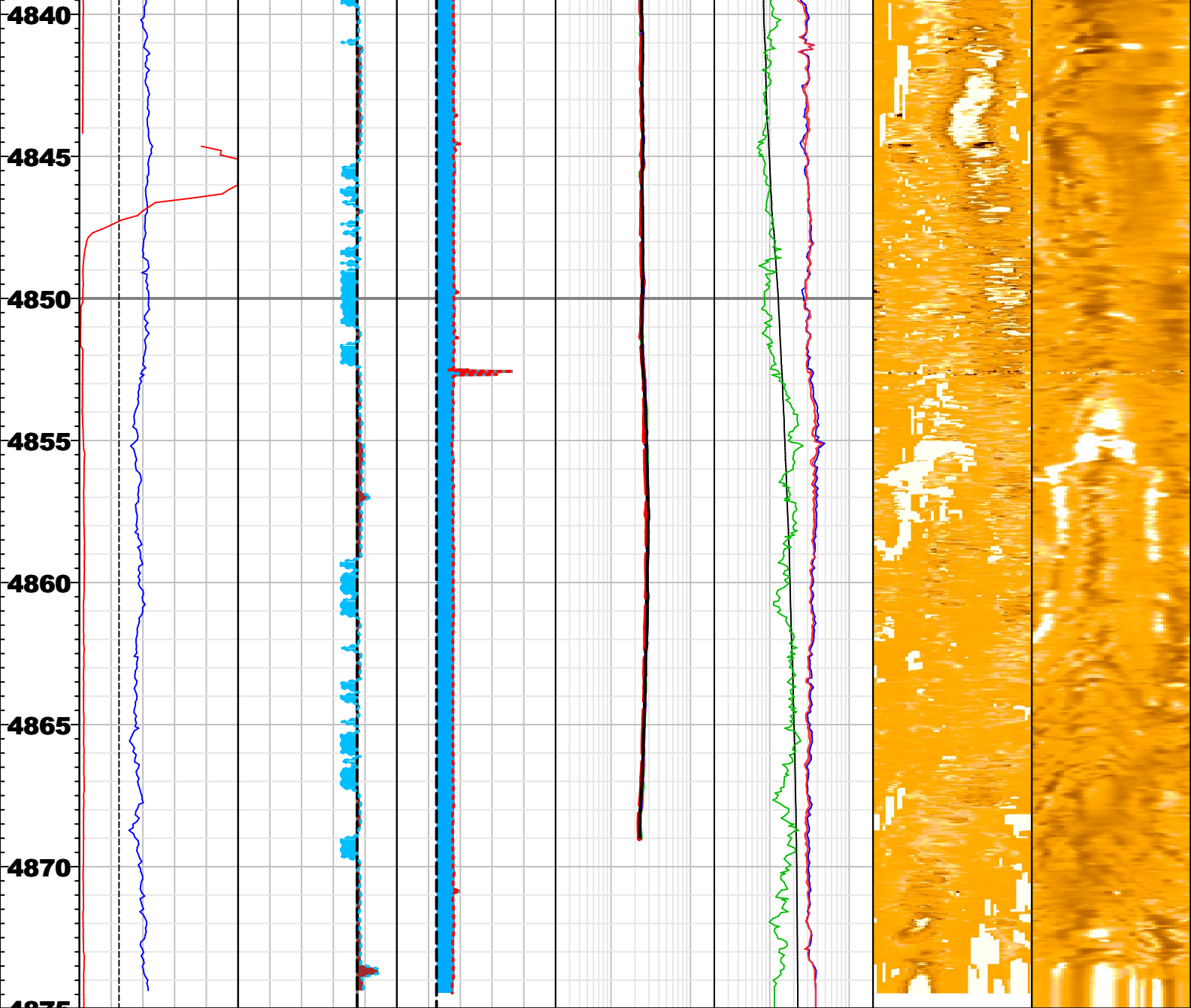
Any interpretation, research, analysis, data, results, estimates, or recommendation furnished with the services or otherwise communicated by Schlumberger to the customer at any time in connection with the services are opinions based on inferences from measurements, empirical relationships, and/or assumptions; which, inferences, empirical relationships and/or assumptions are not infallible and with respect to which professionals in the industry may differ. Accordingly, Schlumberger cannot and does not warrant the accuracy, correctness, or completeness of any such interpretation, research, analysis, data, results, estimates, or recommendation. The customer acknowledges that it is accepting the services "as is," that Schlumberger makes no representation or warranty, express or implied, of any kind or description in respect thereto, and that such services are delivered with the explicit understanding and agreement that any action taken based on the services received shall be at its own risk and responsibility, and no claim shall be made against Schlumberger as a consequence thereof.

Svc. Order #:	Interpretation Center:	Analyst: XIA	Process Date: 9 Feb 2019
Location:	Techlog Vers: 2017.2		

Remarks:

MD logs is Measured Depth from Rotary Table.
Resistivity logs are from MicroScope.
HD_MI6 is eCaliper result from MicroScope

MD (m) 1:200					RT_INVERT														
					0.2 ohm.m 20														
	ROP5				A40H		RES_BX												
					0.2 ohm.m 20		0.2 ohm.m 20												
					A34H		RES_BS		Heated		HeatedReversed								
					0.2 ohm.m 20		0.2 ohm.m 20		4.71		4.89		0.10 4.99						
	MIN_DIAMETER_Despike_LineX_DIAMETER_Despike_Line				A28H		RES_BM		HR_IMG		RES_BX_IMG_ORIENTED								
	0 m/h 100				0.2 ohm.m 20		0.2 ohm.m 20		3.2 in 8.7		0.1 ohm.m 5e+04								
	HD_MI6				A22H		RES_BIT		Image Orientation°		Image Orientation°								
	6 in 16				0.2 ohm.m 20		0.2 ohm.m 20		N E S W N		N E S W N								
BS				A16H		RES_BD		0 90 180 270 360		0 90 180 360									
6 in 16				0.2 ohm.m 20		0.2 ohm.m 20													
4805																			
4810																			
4815																			
4820																			
4825																			
4830																			
4835																			



MD (m) 1:200					RT_INVERT							
					0.2 ohm.m 20							
					A40H		RES_BX					
					0.2 ohm.m 20		0.2 ohm.m 20					
					A34H		RES_BS		Heated		HeatedReversed	
					0.2 ohm.m 20		0.2 ohm.m 20		4.71 4.89		0.10 4.99	
					A28H		RES_BM		HR_IMG		RES_BX_IMG_ORIENTED	
					0.2 ohm.m 20		0.2 ohm.m 20		3.2 in 8.7		0.1 ohm.m 5e+04	
					A22H		RES_BIT		Image Orientation°		Image Orientation°	
					0.2 ohm.m 20		0.2 ohm.m 20		N E S W N		N E S W N	
					A16H		RES_BD		0 90 180 270 360		0 90 180 360	
	6 in 16		16 in 6		0.2 ohm.m 20		0.2 ohm.m 20					

COMPANY: MQJ/JAMSTEC

WELL: C00026

WELL: C0002S
FIELD: Nankai-Kumano
COUNTRY: Japan

Schlumberger

Date Logged: 5 Feb 2019
Date Processed: 9 Feb 2019
Surface Location: 33° 18' 3.04" N 136° 38' 12.17"E

Elevations: KB: DF: 28.500 m GL: -1939.000 m
API Number: JPJ-2018-010