

All interpretations are opinions based on inferences from electrical or other measurements and we cannot and do not guarantee the accuracy or completeness of the information contained herein. The user of this information should consult the original data and reports of the contractor or employees. These interpretations are also subject to Clause 4 of our General Terms and Conditions as set in our current Price Schedule.

COMPANY : JAMSTEC
WELL : C0024A

PLOT

ZERO OFFSET VSP - CORRIDOR STACK AND SURFACE SEISMIC ENHANCED UPGOING WAVEFIELD AFTER WAVEHAPE DECONVOLUTION, VSP CORRIDOR STACK AND SURFACE SEISMIC SECTION

WELL LOCATION : X=667159.78 m, Y=3865617.23 m
WELL ELEVATION : Develped
KF ELEVATION : 28.5 m above MSL
DF ELEVATION : 3332.2 m below DF
PERMANENT DATUM : 870 m below MSL
LOGGING DATUM : MSL
DF :

ACQUISITION INFORMATION
LOGGING DATE : 10-Mar-2019
SOURCE TYPE : Air Gun
SOURCE DEPTH : 3332.2 m below DF
DEPTH OF SOURCE : 3332.2 m below DF
SOURCE OFFSET : 57 m
SOURCE AZIMUTH : 374 Degree North
COLL TYPE : seismic/SON
COLL TYPE : seismic/SON
NUMBER OF LEVELS : 1 ms
SAMPLE DATE : 960318 84 m - 4821.57m (DF)

PROCESSING INFORMATION
01. Shot Editing & Median Stacking
02. Time Picking
03. Frequency spectrum analysis
04. Bandpass Filter (10-110 Hz)
05. True Amplitude Recovery (Exponent 1.71)
06. Static Correction to MSL
07. Water Velocity 1530 m/s, Source at 5.42 m below MSL
07. Wavefield Separation Down(Median Velocity Filter 13 levels) and UP
08. Wavefield Deconvolution (Zero Phase, 10-90 Hz)
08. Wavefield Deconvolution (Zero Phase, 10-90 Hz)
09. Upgoing Wavefield Enhancement (Median Velocity Filter 3 levels)
10. Corridor Stack (Corridor Window: 50 ms) & AGC 500 ms

DISPLAY PARAMETERS
Time Scale: 20 cm/sec

POLARITY CONVENTION
Normal Polarity:
An Increase in Acoustic Impedance is
displayed as a White Trough

Schlumberger
Data Acquired and processed by Schlumberger

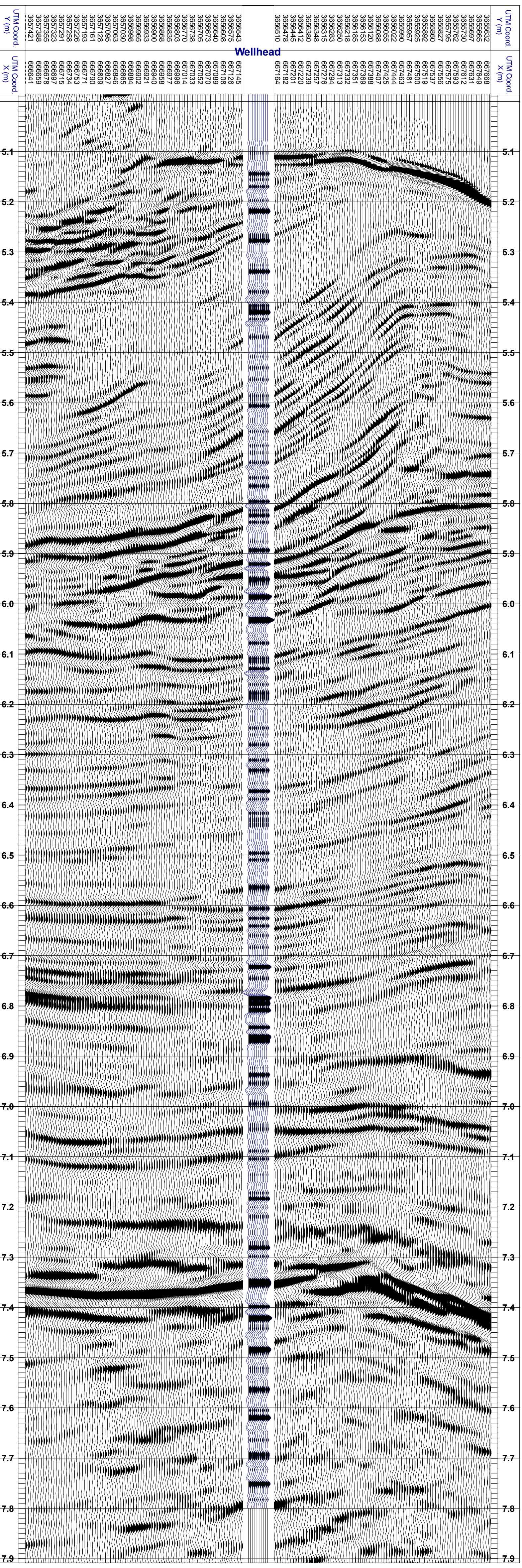
SURFACE SEISMIC DATA
Inline 2437
POLARITY as provided
Shifted by -10ms

CORRIDOR STACK WITHOUT AGC
ZERO PHASE 10-90 HZ
REVERSE POLARITY

CORRIDOR STACK WITH 500ms AGC
ZERO PHASE 10-90 HZ
REVERSE POLARITY

CORRIDOR STACK WITHOUT AGC
ZERO PHASE 10-90 HZ
REVERSE POLARITY

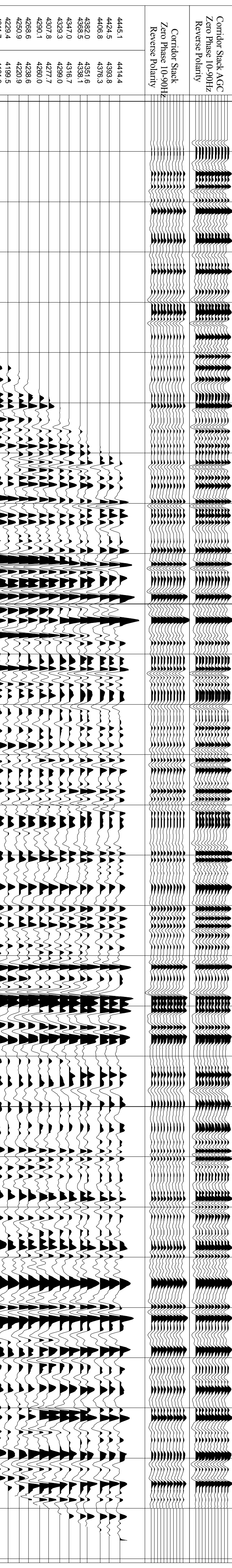
SURFACE SEISMIC DATA
Inline 2437
POLARITY as provided
Shifted by -10ms



CORRIDOR STACK WITHOUT AGC
ZERO PHASE 10-90 HZ
REVERSE POLARITY

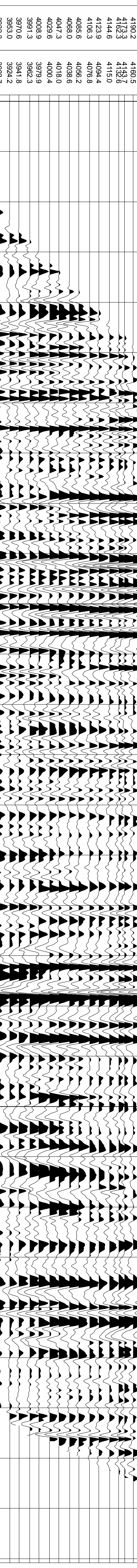
CORRIDOR STACK WITH 500ms AGC
ZERO PHASE 10-90 HZ
REVERSE POLARITY

UPGOING WAVEFIELD AFTER
WAVEHAPE DECONVOLUTION
ZERO PHASE 10-90 HZ
REVERSE POLARITY



Corridor Stack
Zero Phase (10-90)Hz
Reverse Polarity

UPGOING WAVEFIELD AFTER
WAVEHAPE DECONVOLUTION
ZERO PHASE 10-90 HZ
REVERSE POLARITY



MD KB
TVD SRB



Schlumberger
Data Acquired and processed by Schlumberger