

SonicScope Processed DTCC

C0024A

3871.4m - 4712.3m (MD 1:200)

* A Mark of Schlumberger

COMPANY: MQJ / JAMSTEC
WELL: C0024A
FIELD: C0024
STATE: Wakayama
COUNTRY: Japan

Date Processed: 11 Mar 2019 Date Logged: 5 Mar 2019
Job Number: JPJ-2018-010 Processed at: JPJ
Rig Name: Chikyu
Latitude: 33° 2' 2.638" N Longitude: 136° 47' 23.946"
Elevation: KB: 28.5 m DF: 28.5 m GL: -3841.5 m

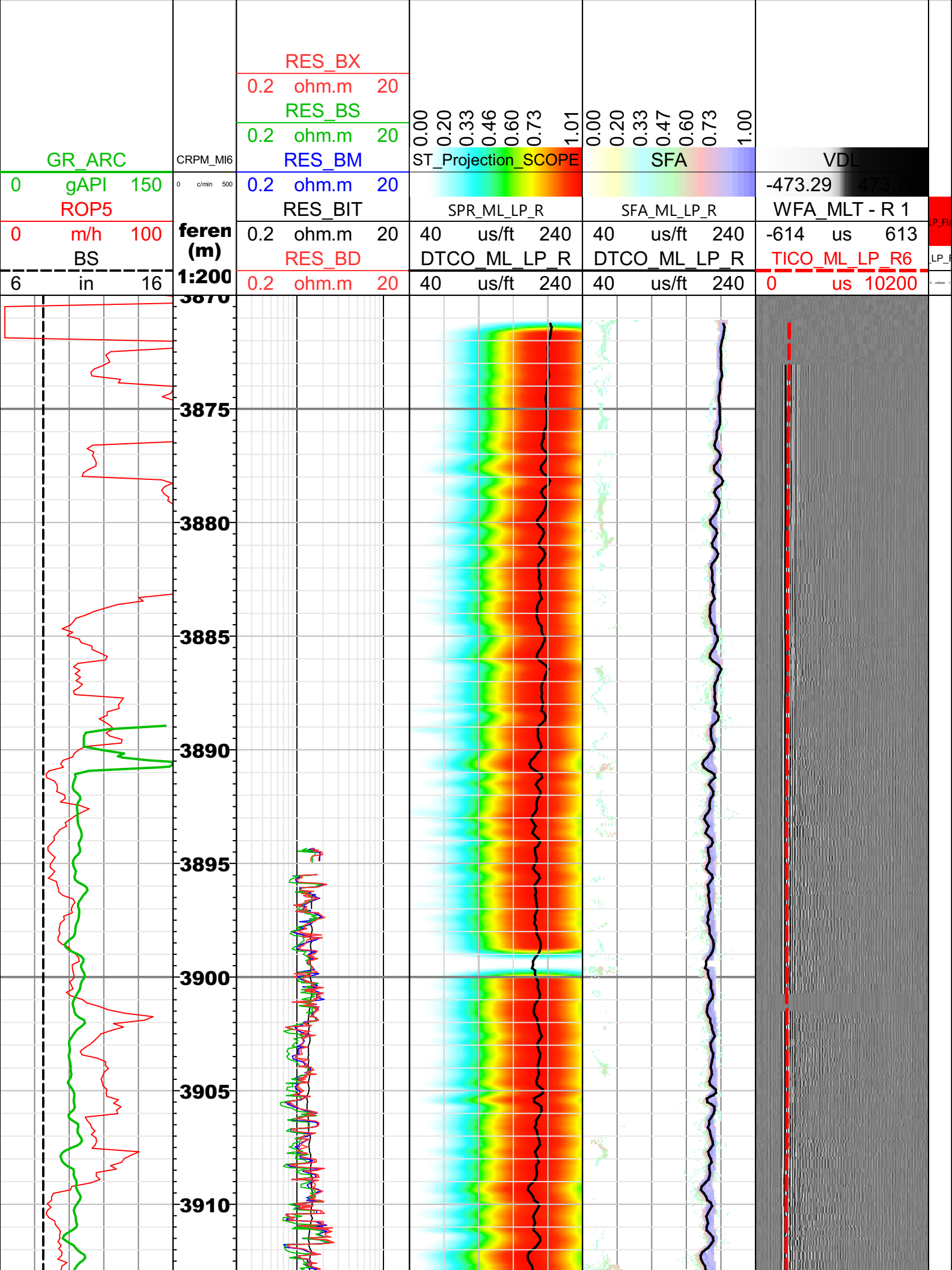
FOLD HERE: The well name, location and borehole reference data were furnished by the customer.

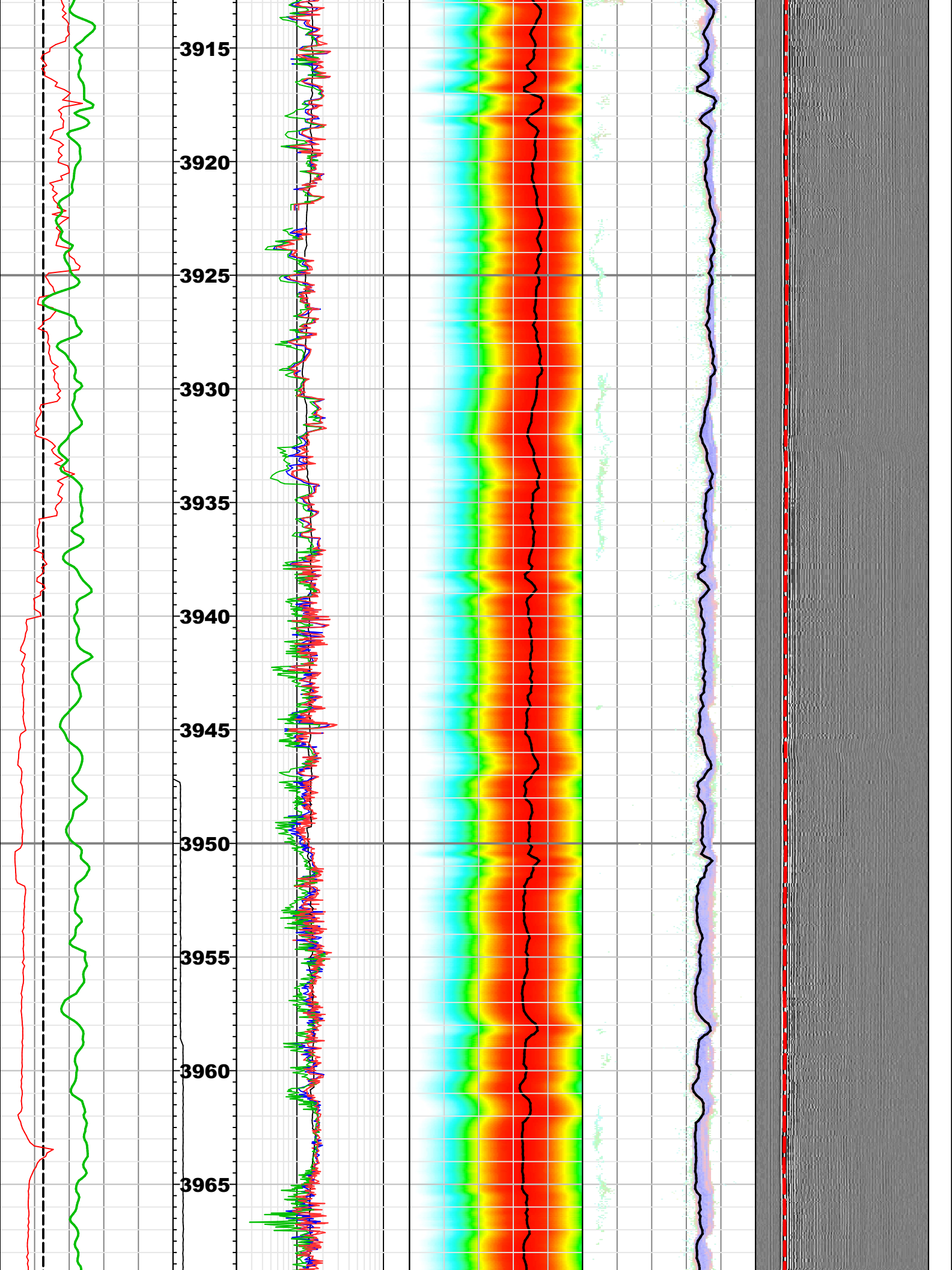
Any interpretation, research, analysis, data, results, estimates, or recommendation furnished with the services or otherwise communicated by Schlumberger to the customer at any time in connection with the services are opinions based on inferences from measurements, empirical relationships, and/or assumptions; which, inferences, empirical relationships and/or assumptions are not infallible and with respect to which professionals in the industry may differ. Accordingly, Schlumberger cannot and does not warrant the accuracy, correctness, or completeness of any such interpretation, research, analysis, data, results, estimates, or recommendation. The customer acknowledges that it is accepting the services "as is," that Schlumberger makes no representation or warranty, express or implied, of any kind or description in respect thereto, and that such services are delivered with the explicit understanding and agreement that any action taken based on the services received shall be at its own risk and responsibility, and no claim shall be made against Schlumberger as a consequence thereof.

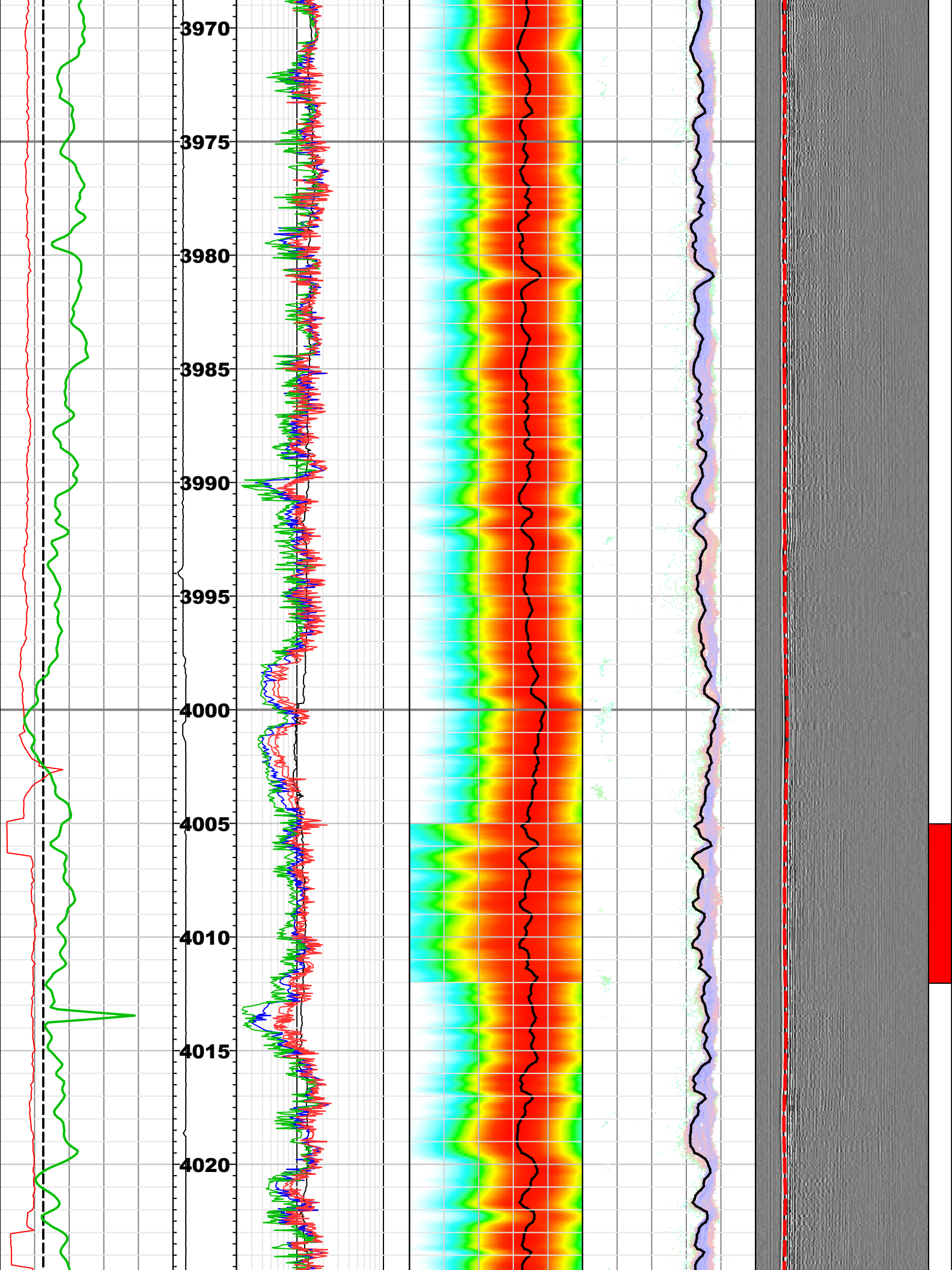
Svc. Order #:	Interpretation Center:	Analyst: XIA	Process Date: 11 Mar 2019
Location:	Techlog Vers: 2017.2		

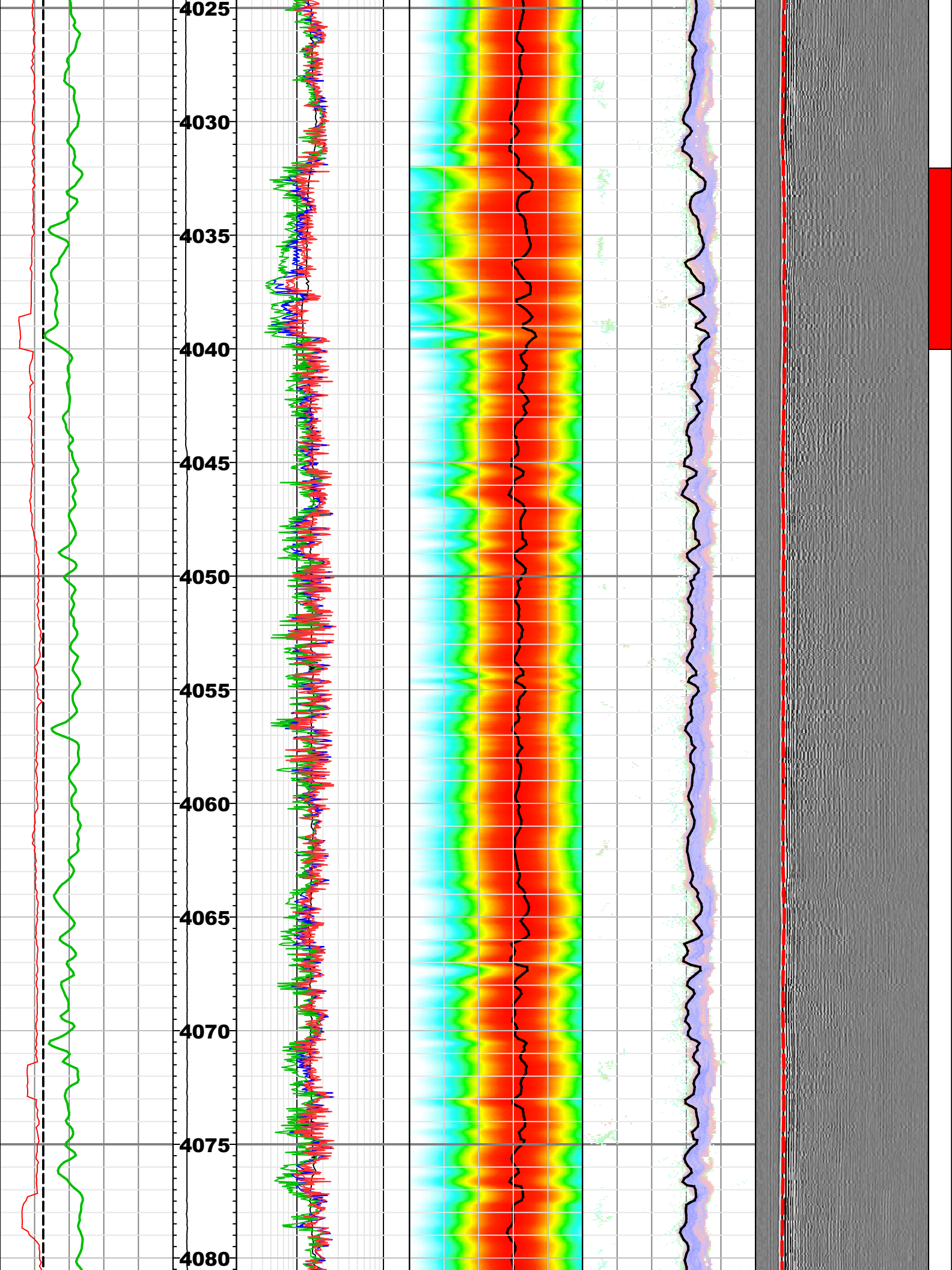
Remarks:

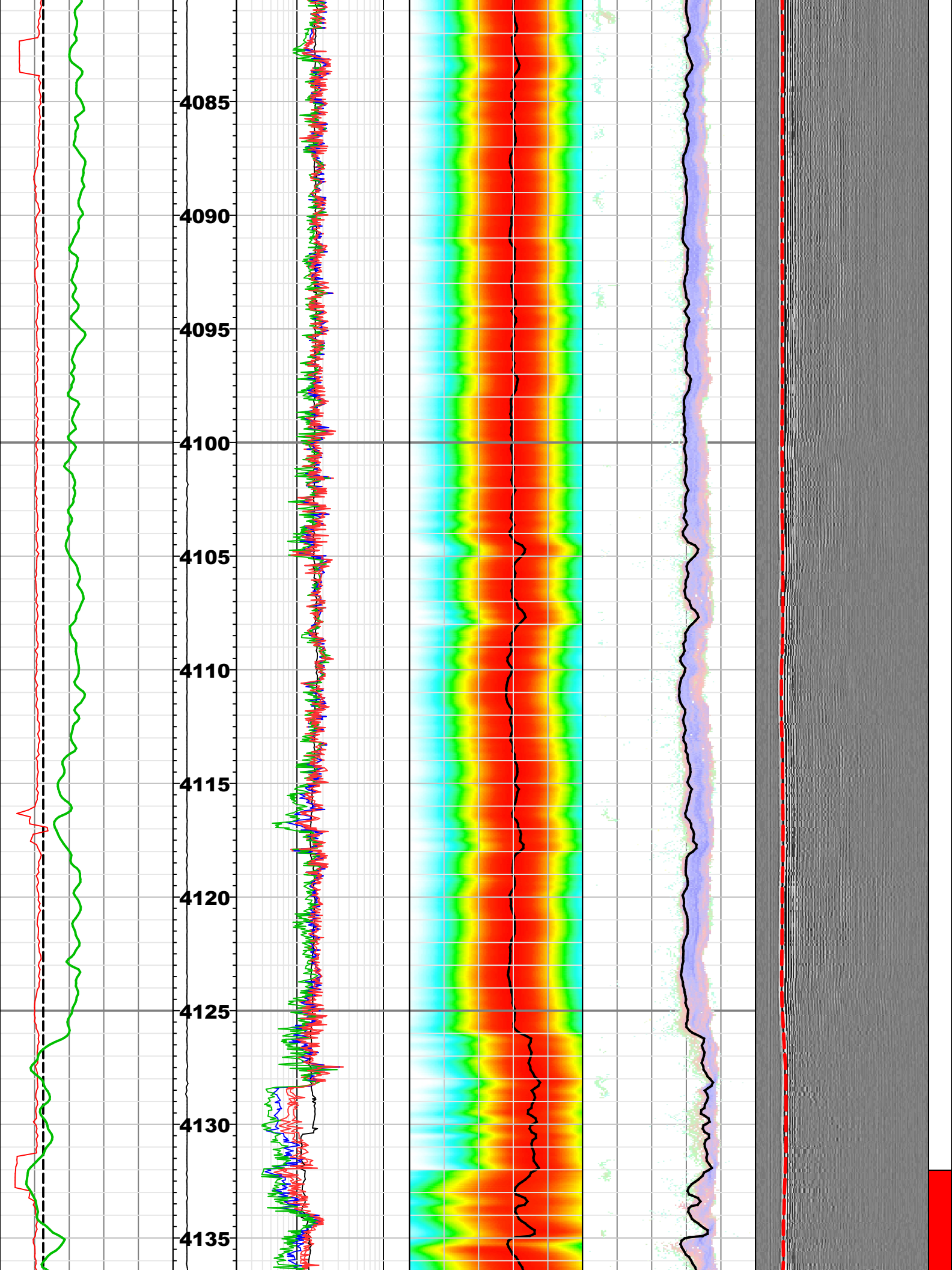
Resistivity logs are from MicroScope.
Compressional slowness log was processed by Leaky-P signal in Monopole low frequency Receiver mode.
Multi-shot STC processing with 7 NRSA (Numbers of receivers in sub-array) was performed.
Measured waveform affected by borehole condition, such as washout. Therefore, in this processing, two different types of filter bands were used. Intervals for 4005 - 4012 m, 4032 - 4040 m, 4132 - 4177 m, 4245.76 - 4250.33 m, 4253.99 - 4256.99 m, 4274 - 4278.12m with red flag used 500Hz – 1300Hz filter band. Other intervals used 1000Hz – 3000Hz.

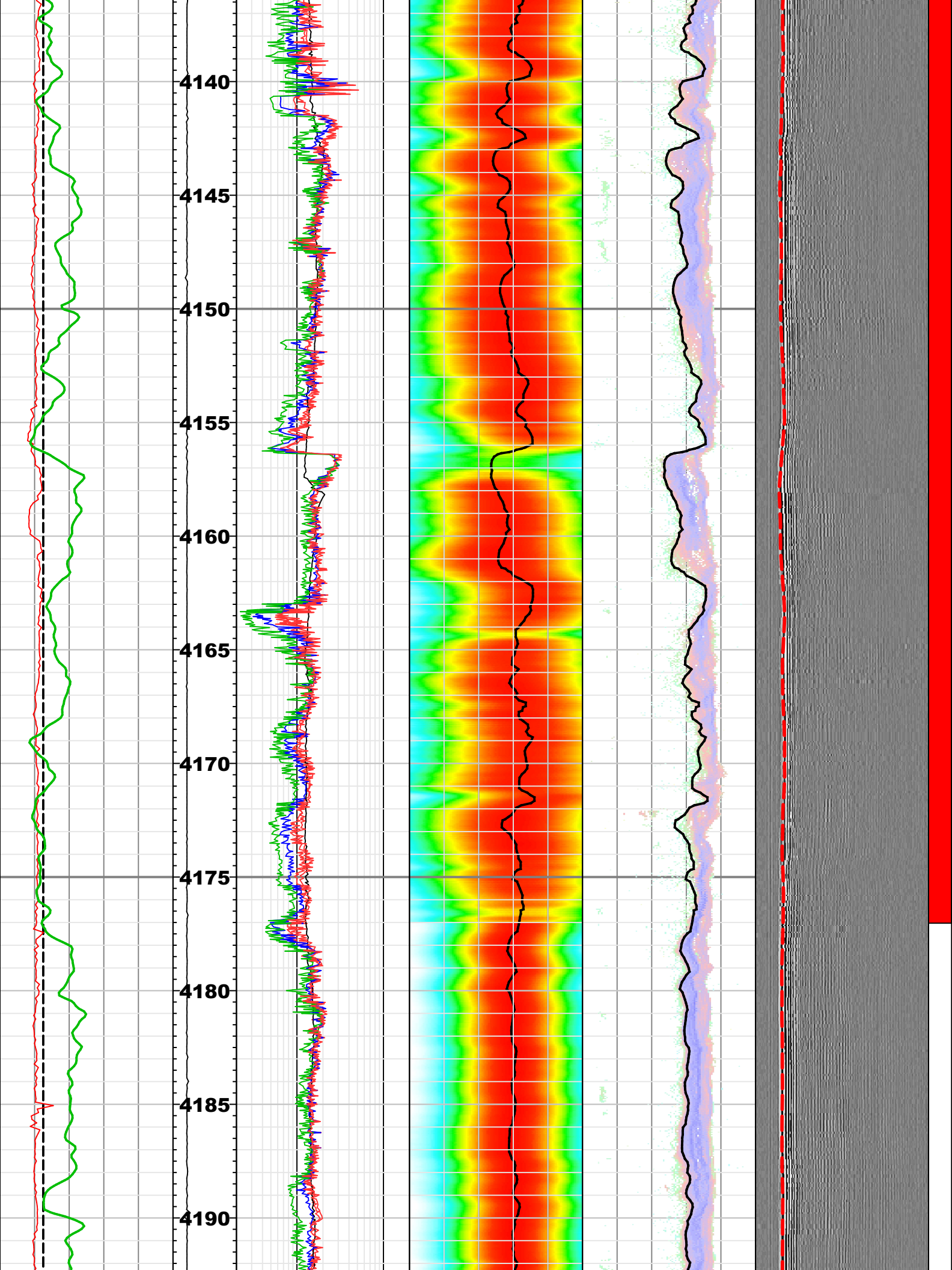


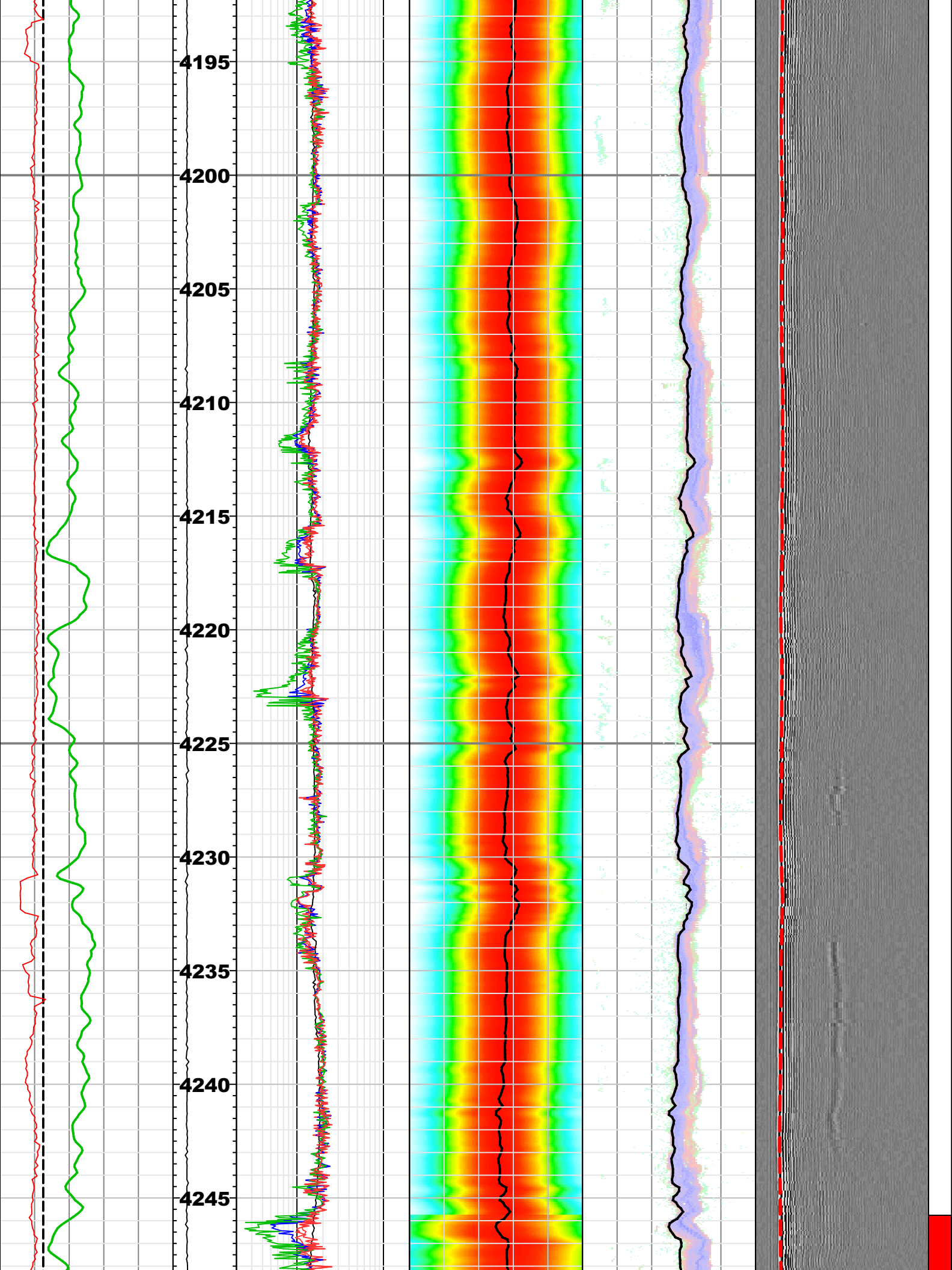


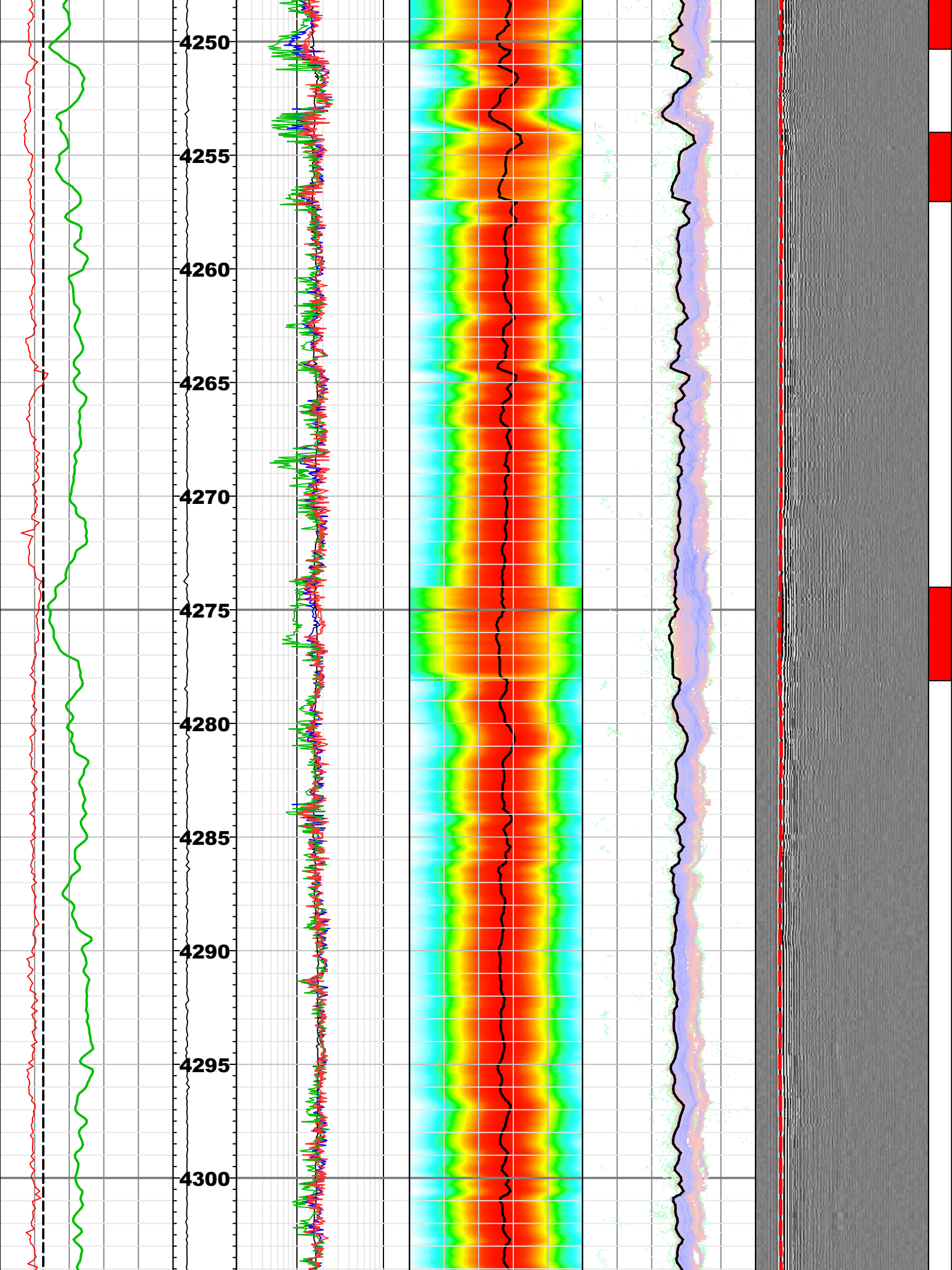


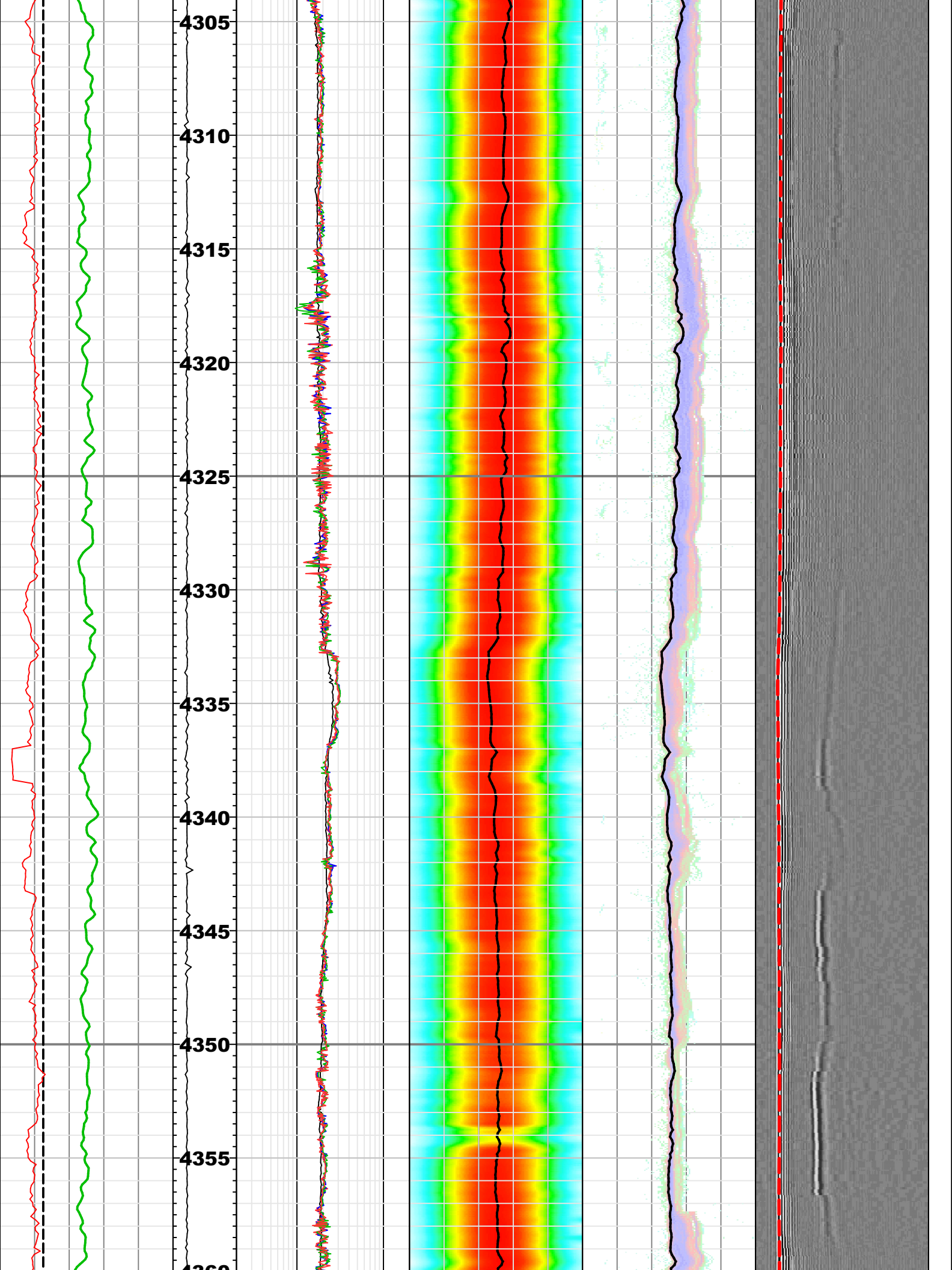


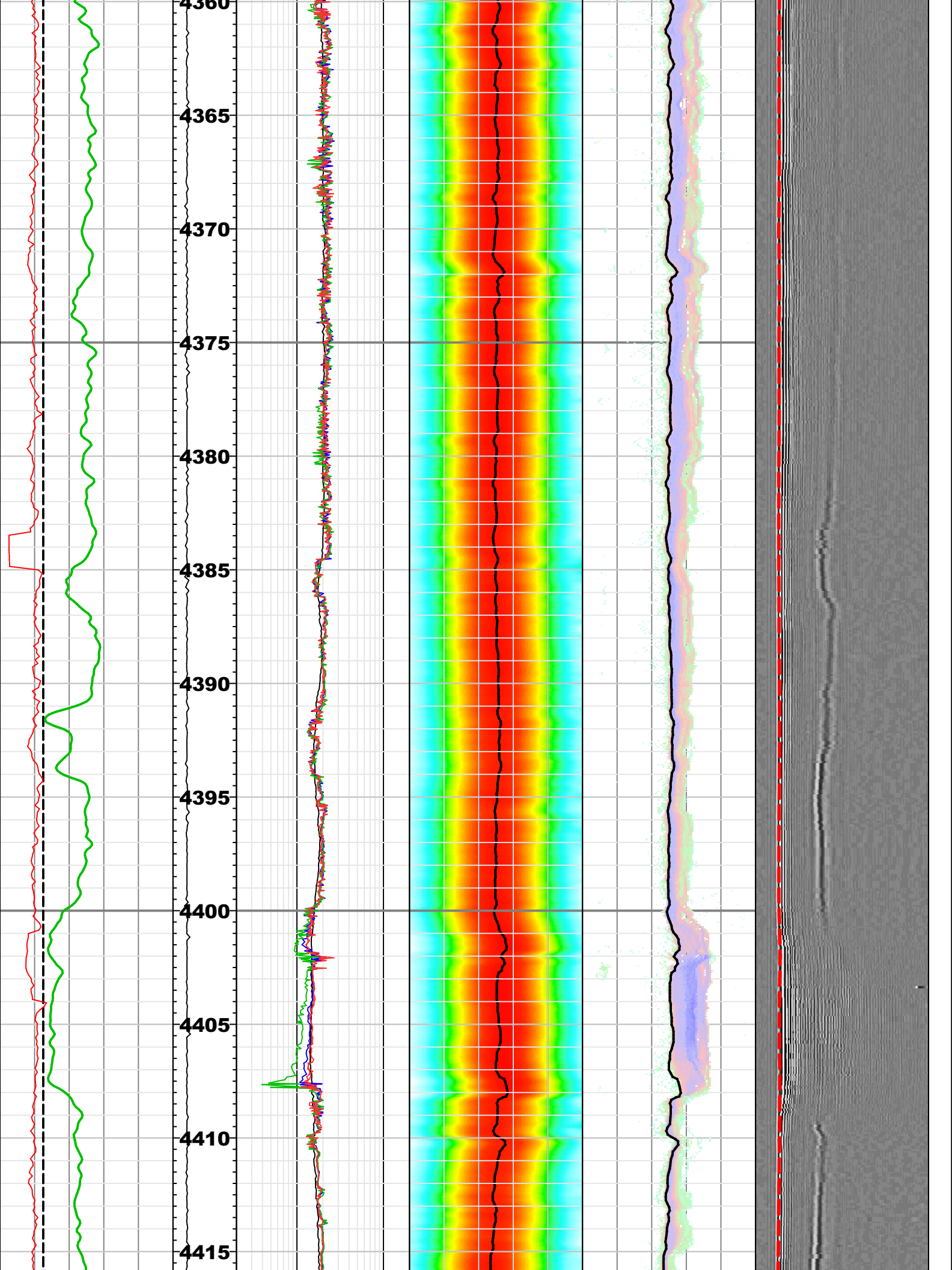


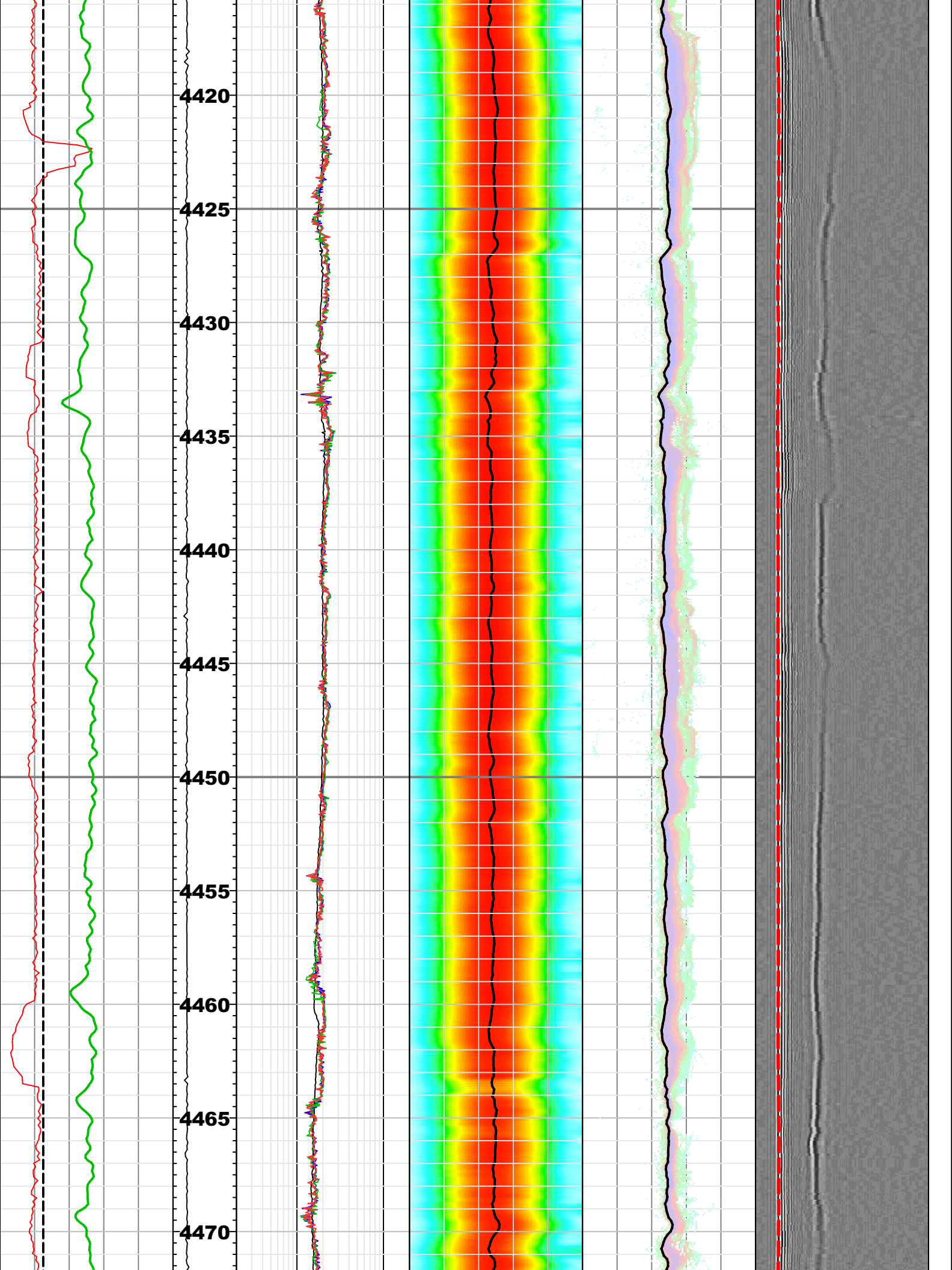


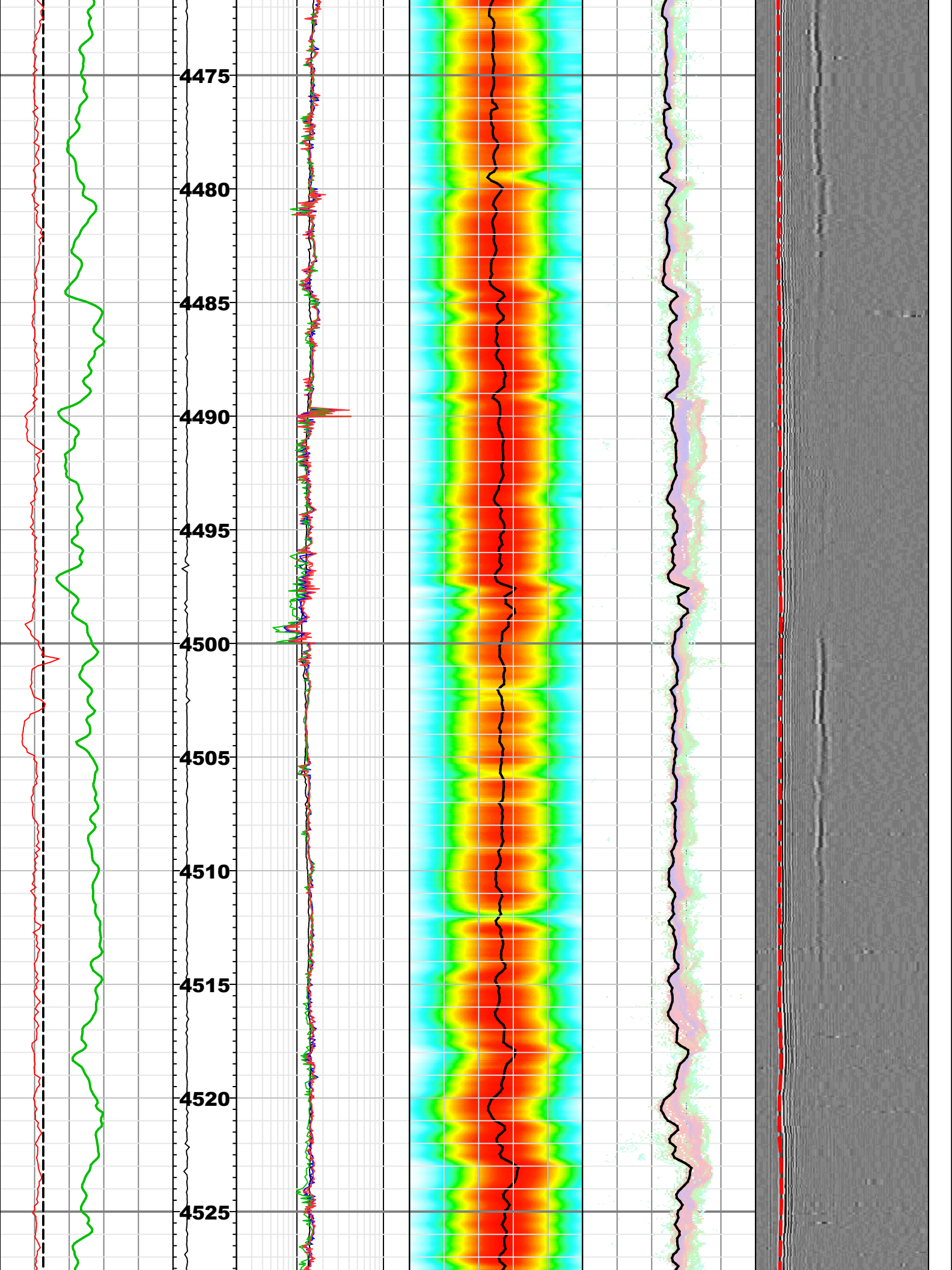


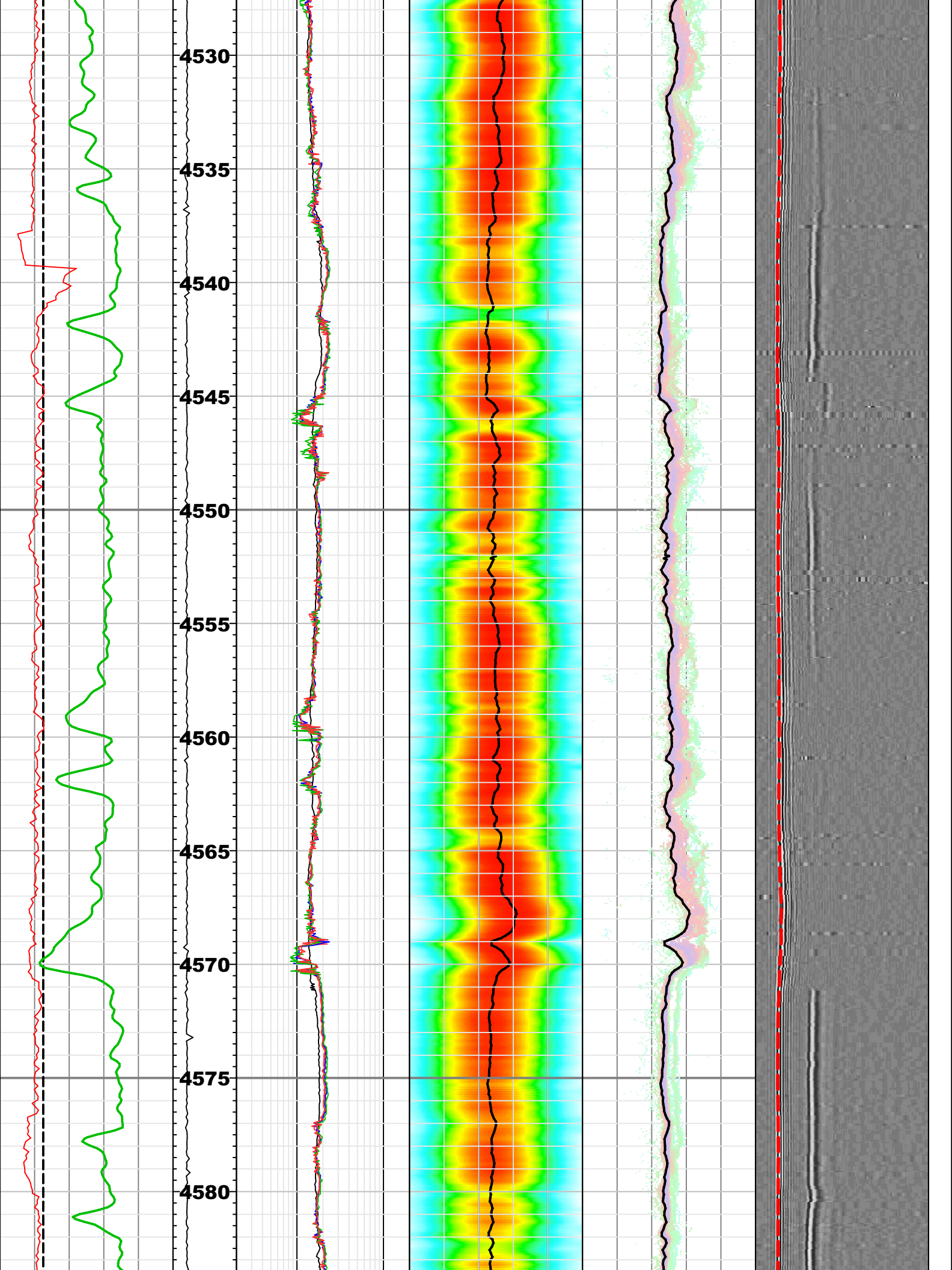


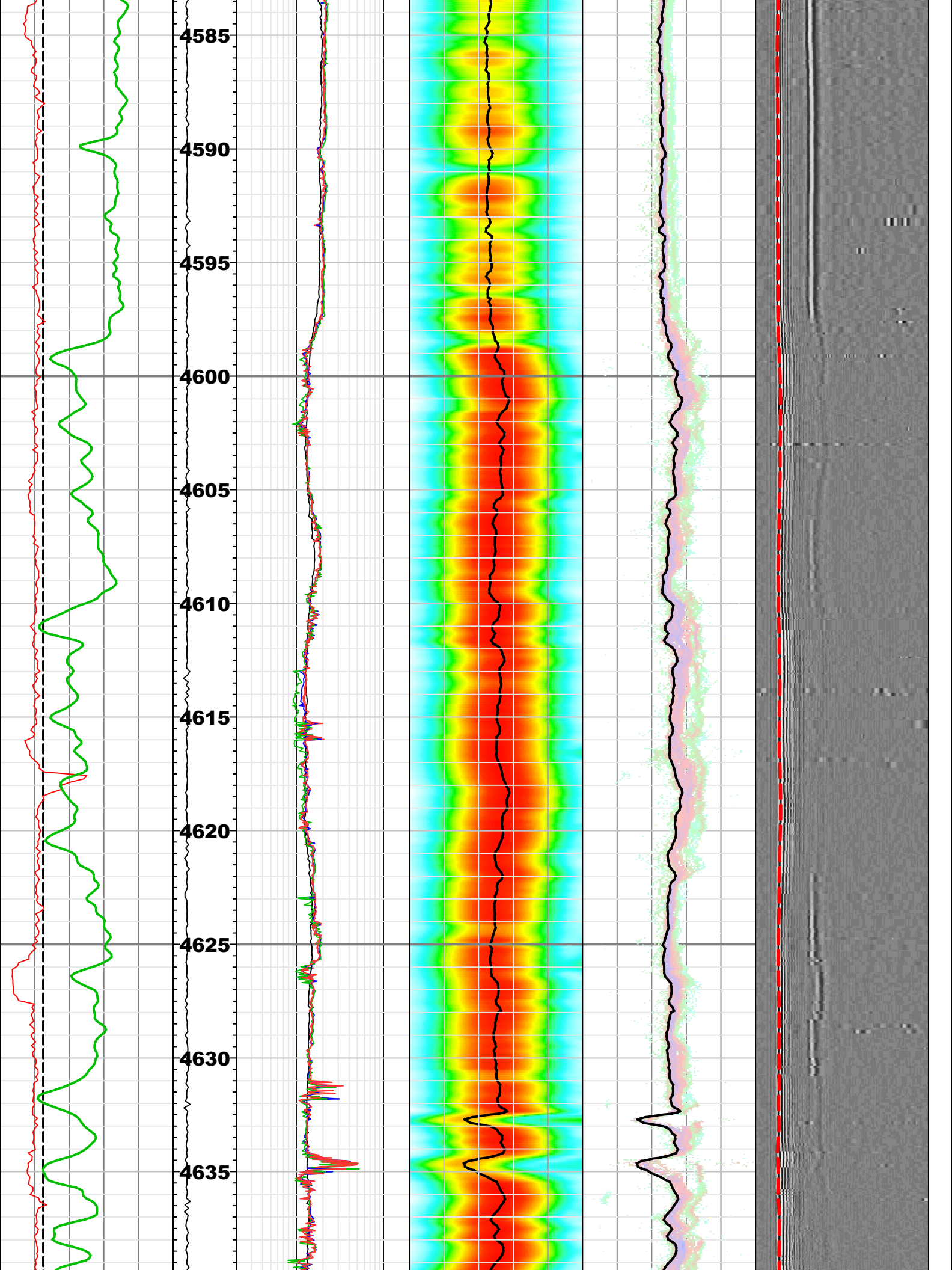


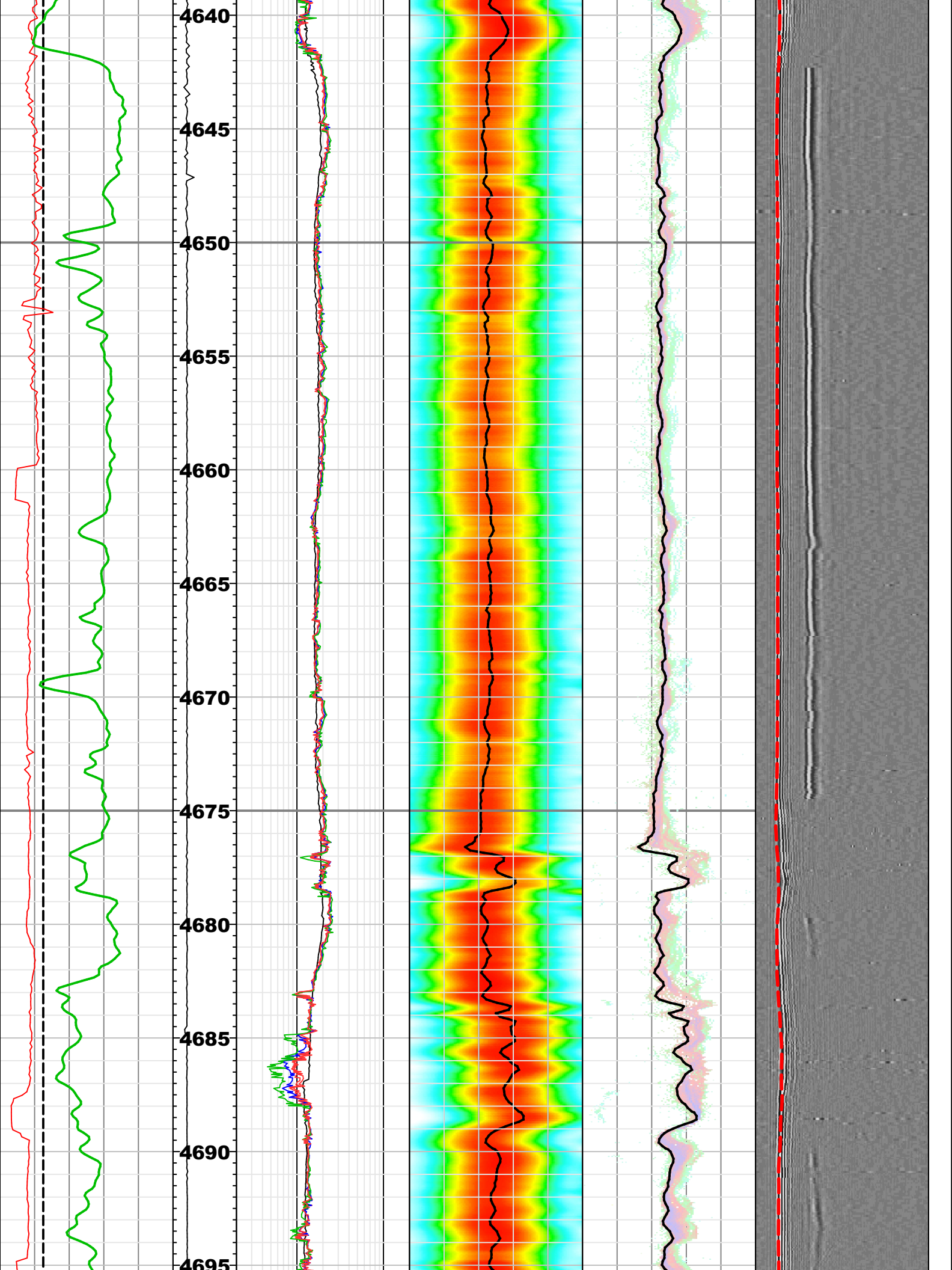


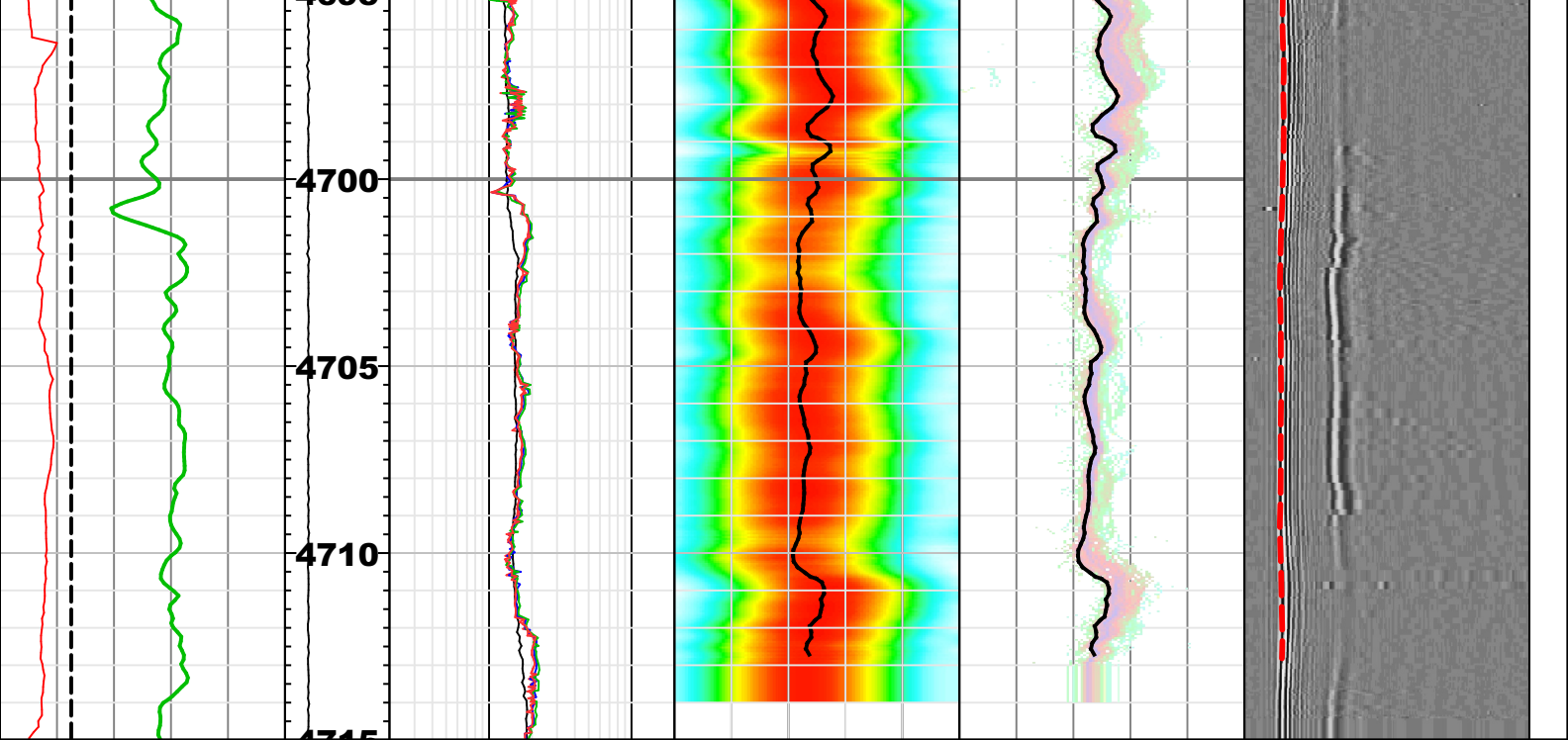












GR ARC	CRPM_MI6	RES_BX	0.2 ohm.m 20	ST_Projection_SCOPE	SFA	VDL
		RES_BS	0.2 ohm.m 20			
ROP5	0 c/min 500	RES_BM	0.2 ohm.m 20	0.00 0.20 0.33 0.46 0.60 0.73 1.01	0.00 0.20 0.33 0.47 0.60 0.73 1.00	-473.29 473.29
BS	feren (m)	RES_BIT	0.2 ohm.m 20	SPR_ML_LP_R	SFA_ML_LP_R	WFA_MLT - R 1
6 in 16	1:200	RES_BD	0.2 ohm.m 20	DTCO_ML_LP_R	DTCO_ML_LP_R	-614 us 613
			0.2 ohm.m 20	40 us/ft 240	40 us/ft 240	TICO_ML_LP_R6
				40 us/ft 240	40 us/ft 240	0 us 10200

COMPANY: MQJ/JAMSTEC
 WELL: C0024A
 FIELD: C0024
 COUNTRY: Japan



Date Logged: 5 Mar 2019
 Date Processed: 11 Mar 2019
 Surface Location: 33° 2' 2.638" N 136° 47' 23.946"E

Elevations: KB: DF: 28.500 m GL: -3841.5 m
 API Number: JPJ-2018-010