

## SonicScope Processed DTCC

### C0024A

### 3871.4m - 4712.3m (MD 1:500)

\* A Mark of Schlumberger

COMPANY:	MCJ / JAMSTEC				
WELL:	C0024A				
FIELD:	C0024				
STATE:	Wakayama				
COUNTRY:	Japan				
Date Processed:	11 Mar 2019	Date Logged:	5 Mar 2019		
Job Number:	JPJ-2018-010	Processed at:	JPJ		
Rig Name:	Chikyu				
Latitude:	33° 2' 2.638" N	Longitude:	136° 47' 23.946"		
Elevation:	KB: 28.5 m	DF:	28.5 m	GL:	-3841.5 m

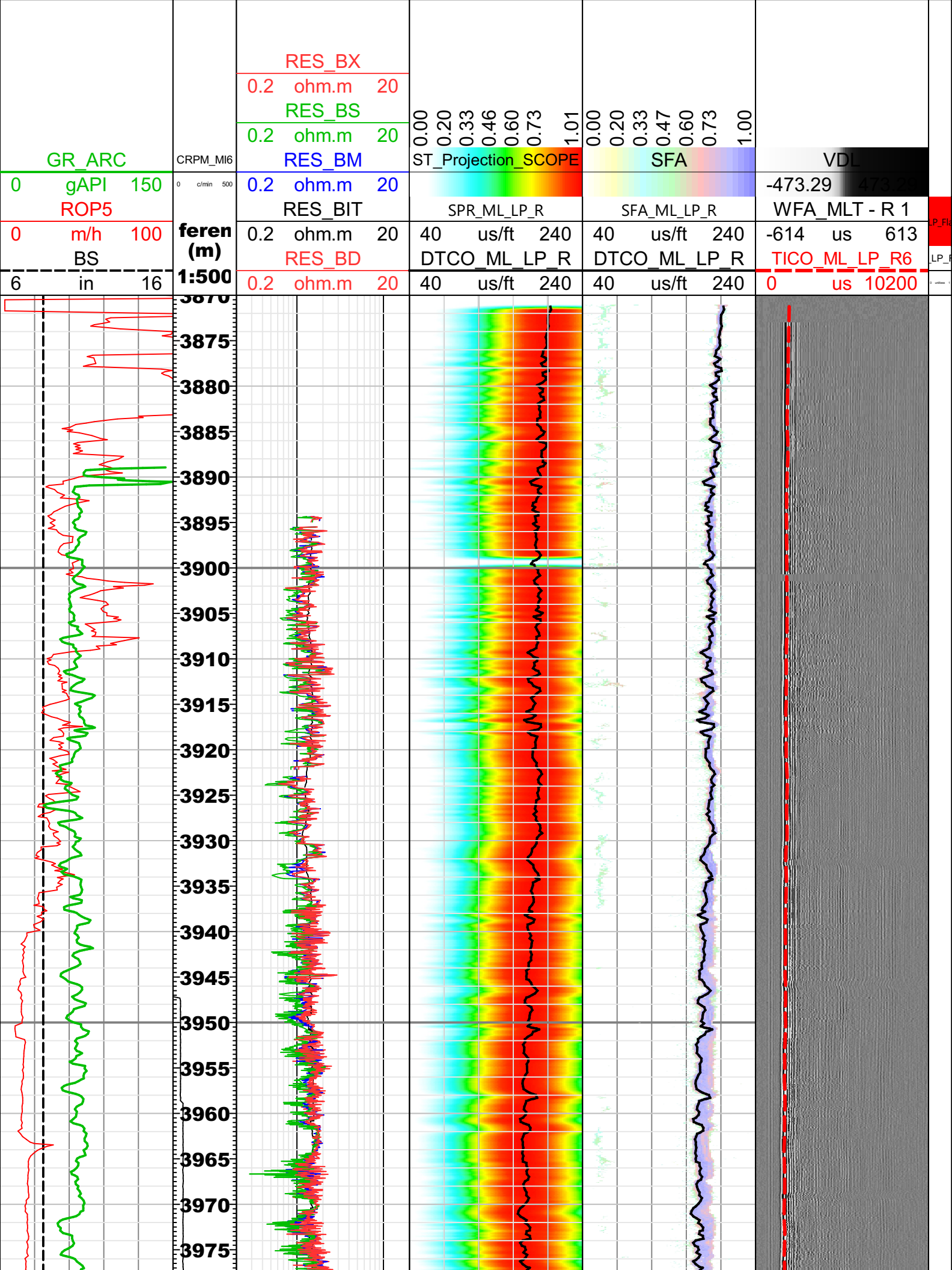
FOLD HERE: The well name, location and borehole reference data were furnished by the customer.

Any interpretation, research, analysis, data, results, estimates, or recommendation furnished with the services or otherwise communicated by Schlumberger to the customer at any time in connection with the services are opinions based on inferences from measurements, empirical relationships, and/or assumptions; which, inferences, empirical relationships and/or assumptions are not infallible and with respect to which professionals in the industry may differ. Accordingly, Schlumberger cannot and does not warrant the accuracy, correctness, or completeness of any such interpretation, research, analysis, data, results, estimates, or recommendation. The customer acknowledges that it is accepting the services "as is," that Schlumberger makes no representation or warranty, express or implied, of any kind or description in respect thereto, and that such services are delivered with the explicit understanding and agreement that any action taken based on the services received shall be at its own risk and responsibility, and no claim shall be made against Schlumberger as a consequence thereof.

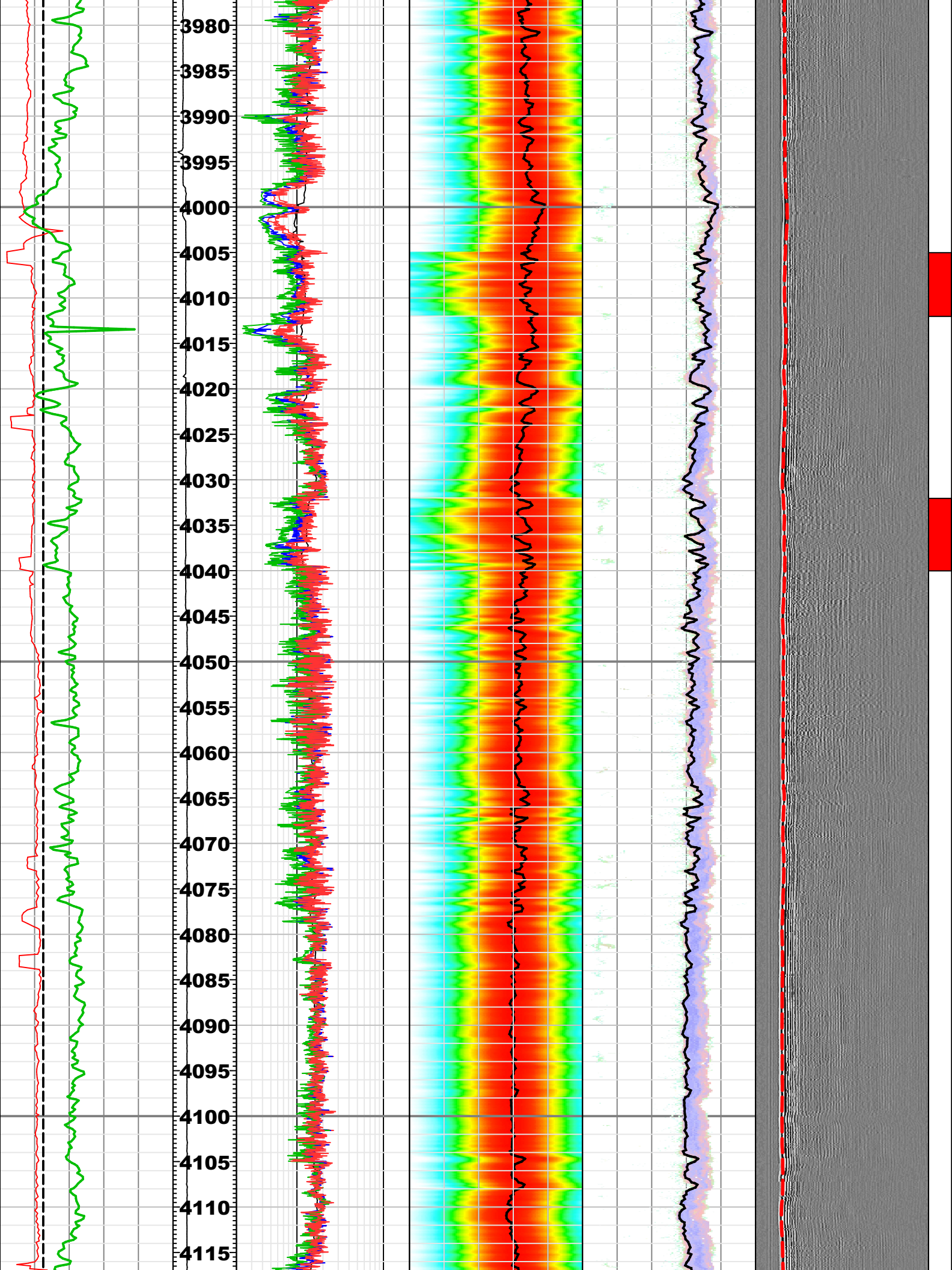
Svc. Order #:	Interpretation Center:	Analyst: XIA	Process Date: 11 Mar 2019
Location:	Techlog Vers: 2017.2		

#### Remarks:

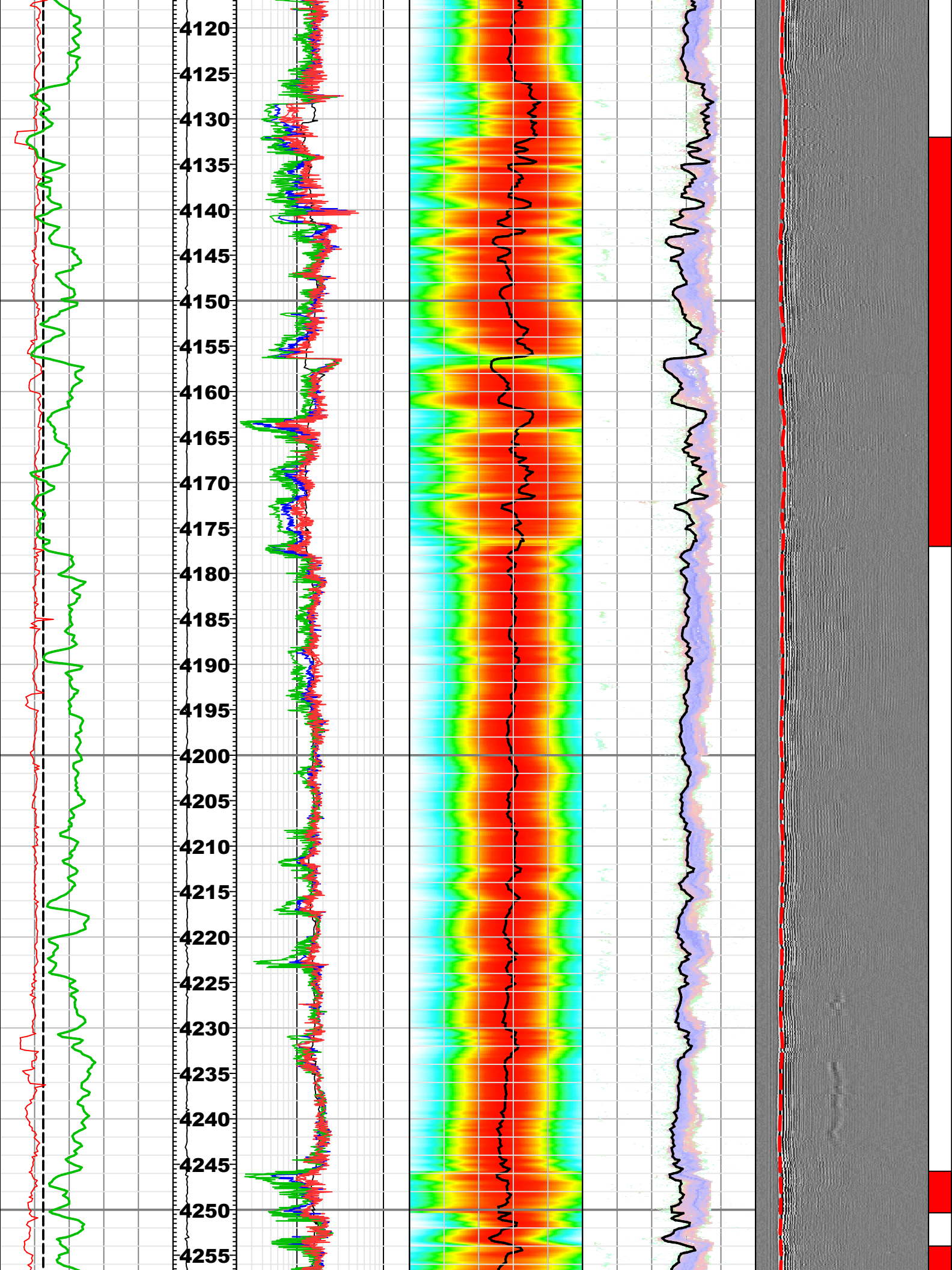
Resistivity logs are from MicroScope.  
Compressional slowness log was processed by Leaky-P signal in Monopole low frequency Receiver mode.  
Multi-shot STC processing with 7 NRSA (Numbers of receivers in sub-array) was performed.  
Measured waveform affected by borehole condition, such as washout. Therefore, in this processing, two different types of filter bands were used. Intervals for 4005 - 4012 m, 4032 - 4040 m, 4132 - 4177 m, 4245.76 - 4250.33 m, 4253.99 - 4256.99 m, 4274 - 4278.12m with red flag used 500Hz – 1300Hz filter band. Other intervals used 1000Hz – 3000Hz.



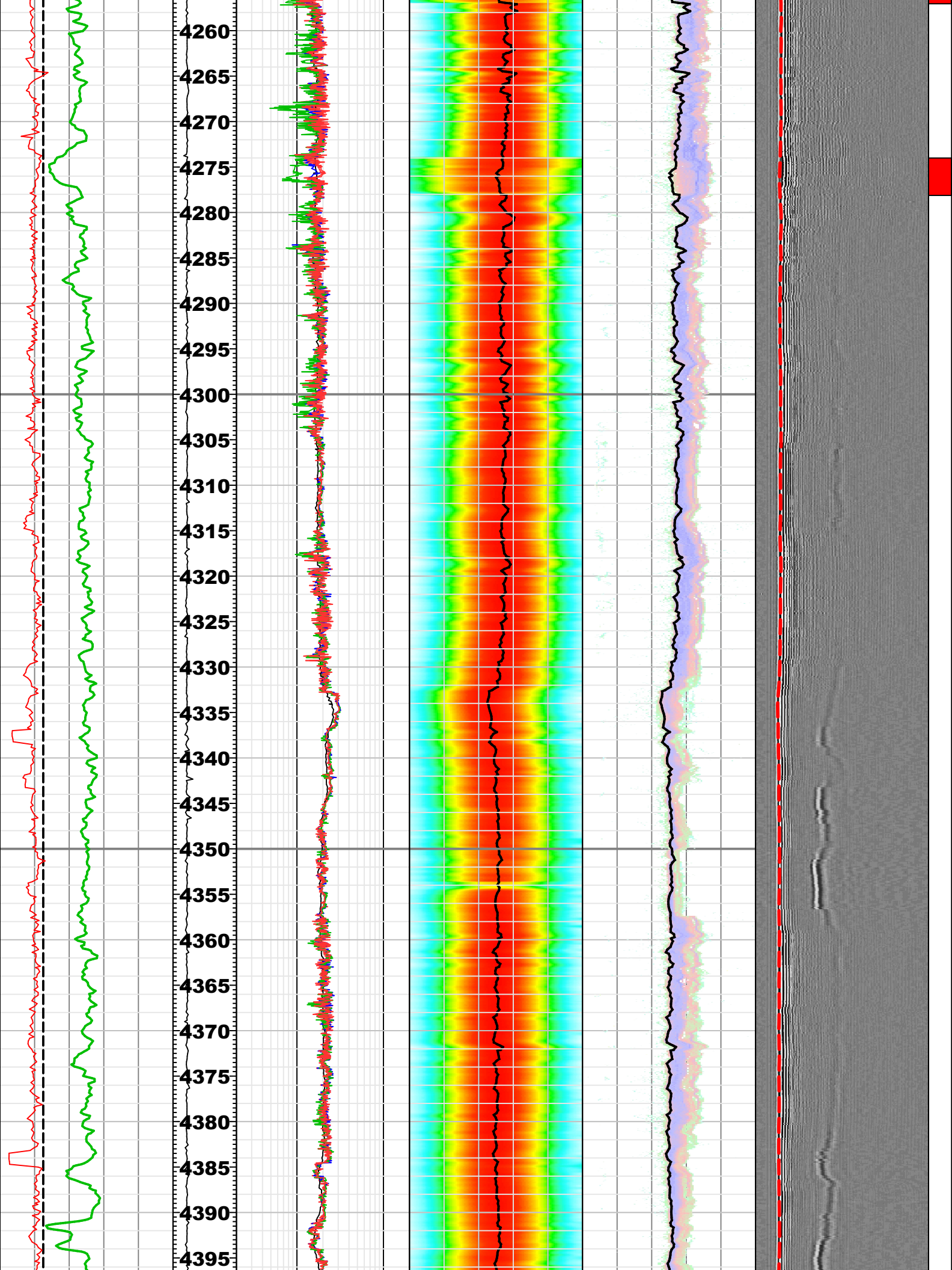




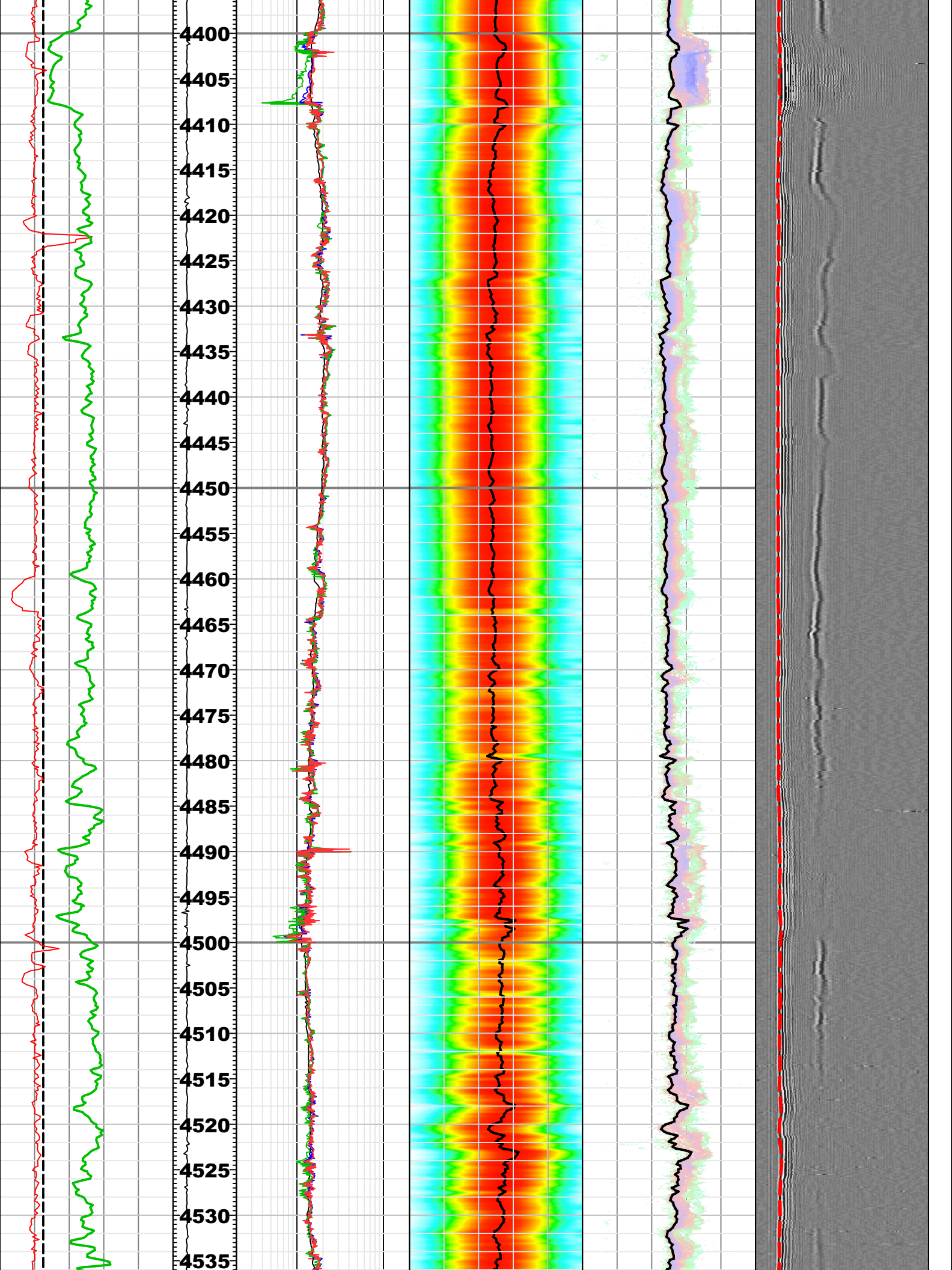




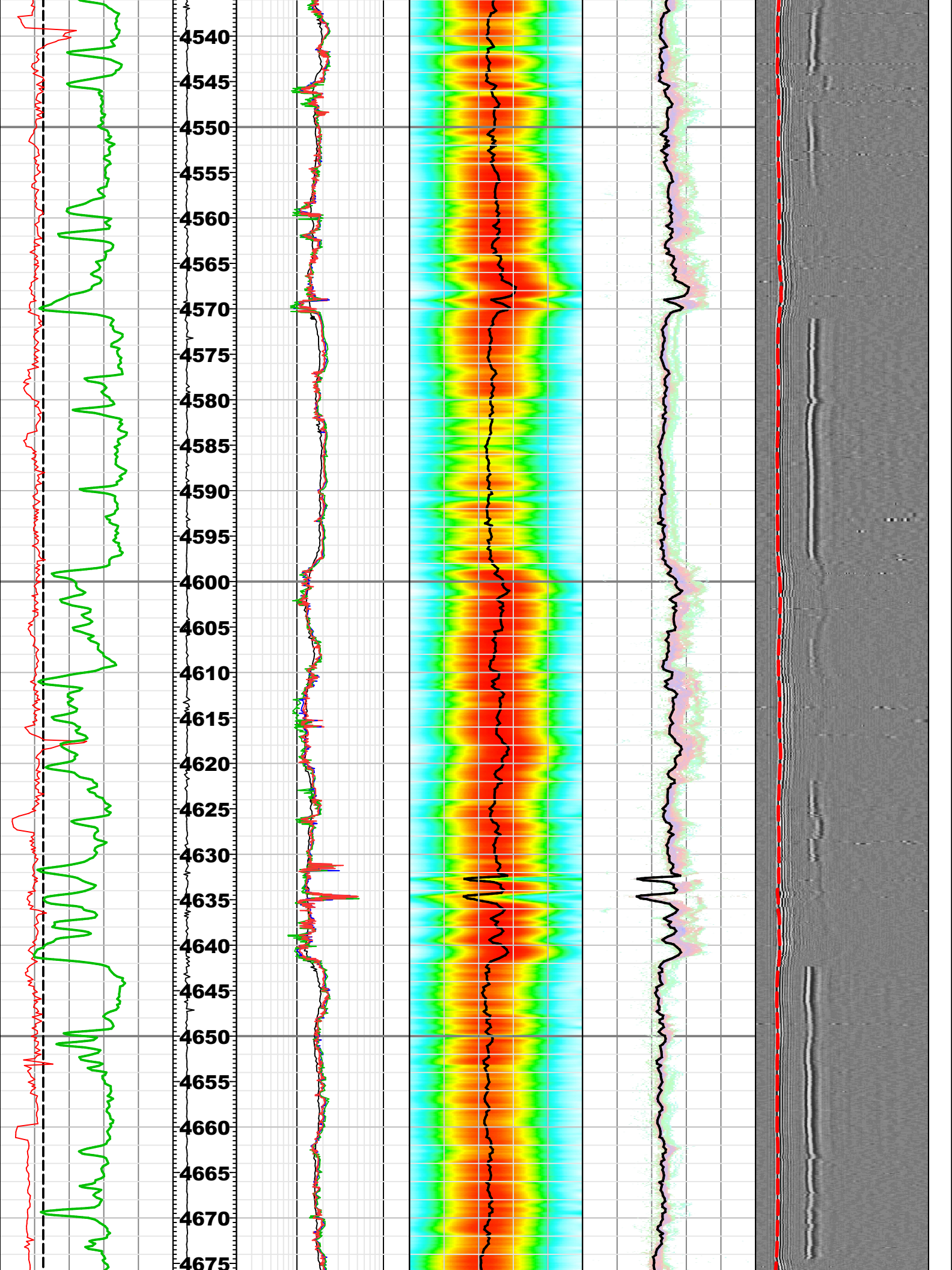


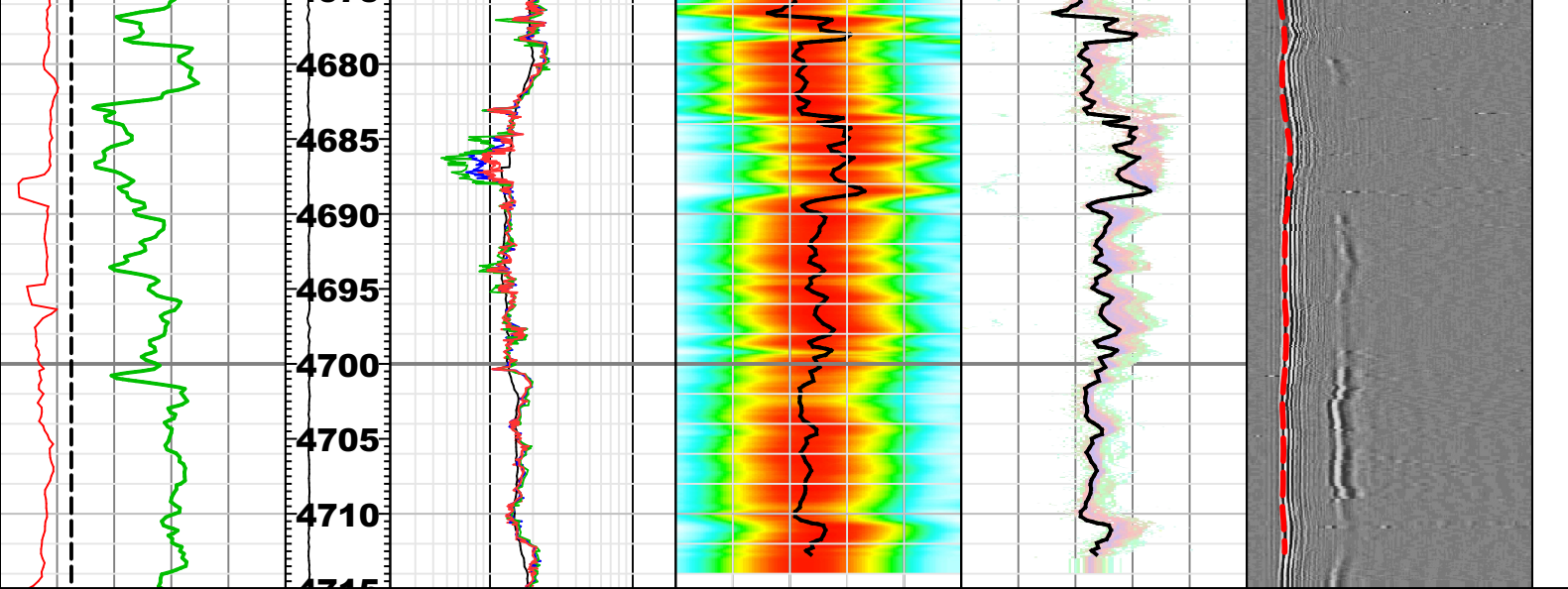












GR_ARC	CRPM_M16	RES_BX	0.2 ohm.m 20	ST_Projection_SCOPE	SFA	VDL
		RES_BS	0.2 ohm.m 20			
0 gAPI 150	feren (m)	RES_BM	0.2 ohm.m 20	SPR_ML_LP_R	SFA_ML_LP_R	-473.29
ROP5		RES_BIT	0.2 ohm.m 20	40 us/ft 240	40 us/ft 240	WFA_MLT - R 1
0 m/h 100	1:500	RES_BD	0.2 ohm.m 20	DTCO_ML_LP_R	DTCO_ML_LP_R	-614 us 613
BS		RES_BD	0.2 ohm.m 20	40 us/ft 240	40 us/ft 240	TICO_ML_LP_R6
6 in 16						0 us 10200

COMPANY: MQJ/JAMSTEC  
 WELL: C0024A  
 FIELD: C0024  
 COUNTRY: Japan



Date Logged: 5 Mar 2019  
 Date Processed: 11 Mar 2019  
 Surface Location: 33° 2' 2.638" N 136° 47' 23.946"E

Elevations: KB: DF: 28.500 m GL: -3841.5 m  
 API Number: JPJ-2018-010