

SonicScope Processed DTSH

C0024A

3871.4m - 4712.3m (MD 1:200)

* A Mark of Schlumberger

COMPANY: MQJ / JAMSTEC
WELL: C0024A
FIELD: C0024
STATE: Wakayama
COUNTRY: Japan

Date Processed: 11 Mar 2019 Date Logged: 5 Mar 2019

Job Number: JPJ-2018-010 Processed at: JPJ

Rig Name: Chikyu

Latitude: 33° 2' 2.638" N Longitude: 136° 47' 23.946"

Elevation: KB: DF: 28.5 m GL: -3841.5 m

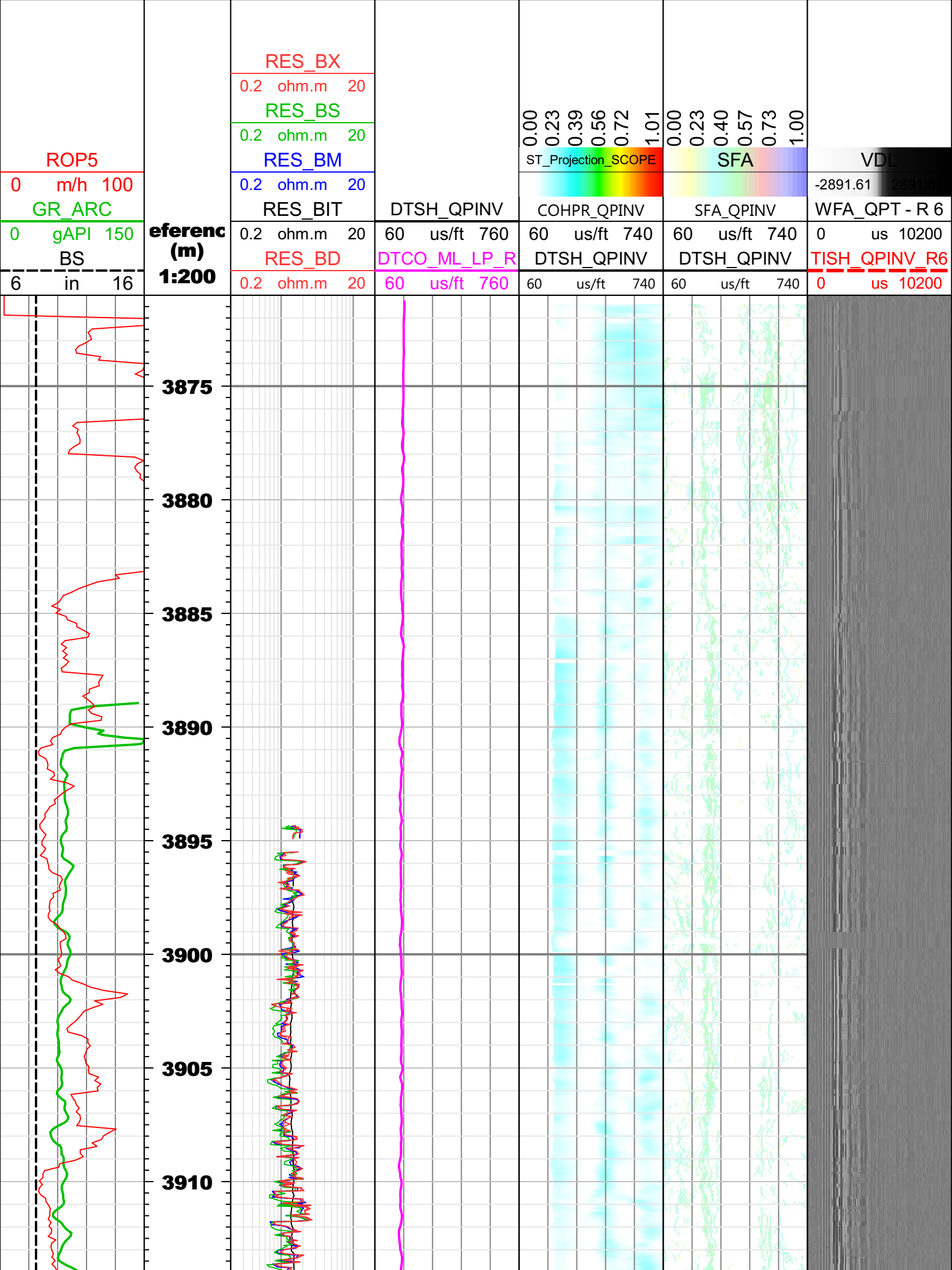
FOLD HERE: The well name, location and borehole reference data were furnished by the customer.

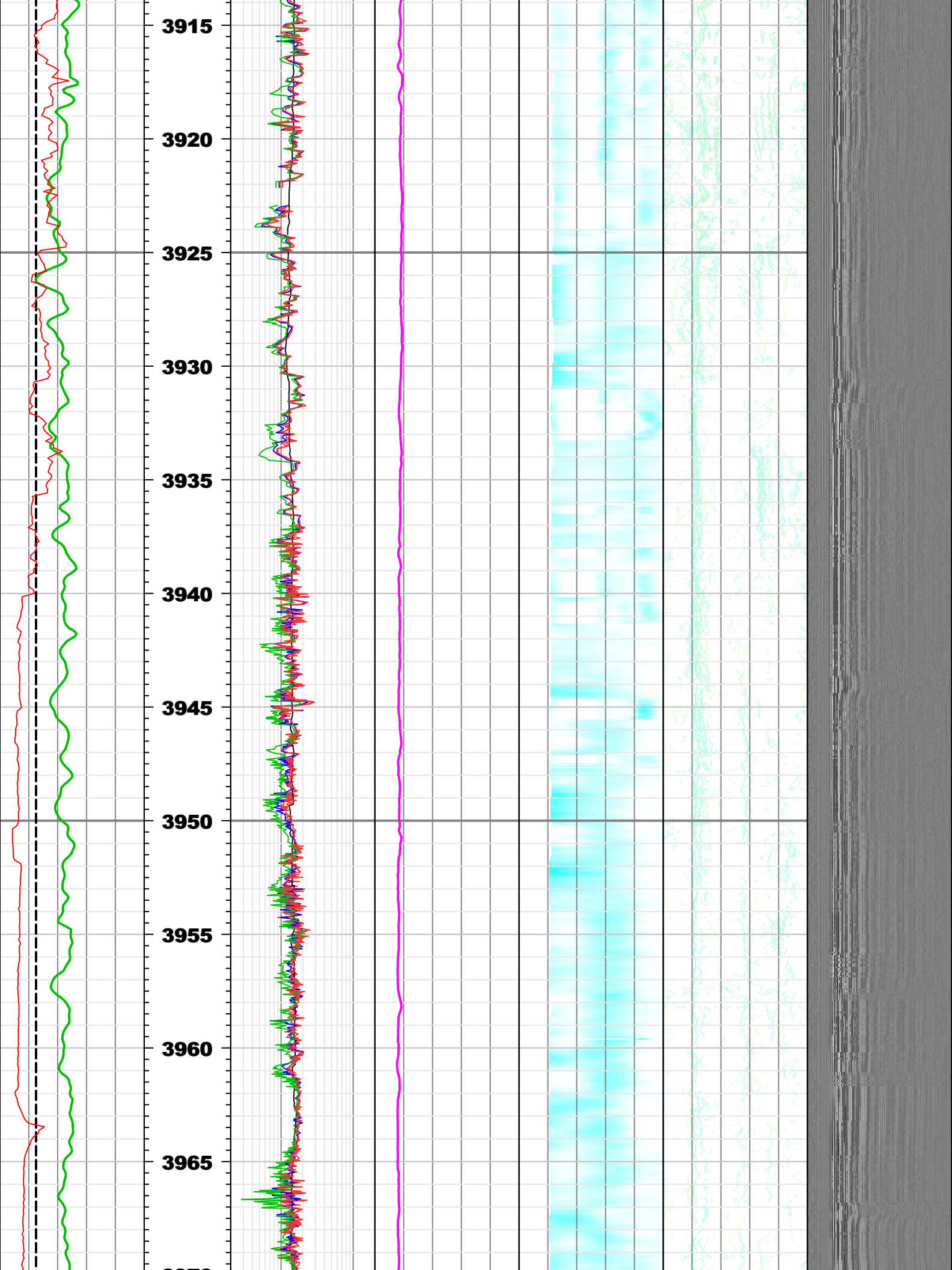
Any interpretation, research, analysis, data, results, estimates, or recommendation furnished with the services or otherwise communicated by Schlumberger to the customer at any time in connection with the services are opinions based on inferences from measurements, empirical relationships, and/or assumptions; which, inferences, empirical relationships and/or assumptions are not infallible and with respect to which professionals in the industry may differ. Accordingly, Schlumberger cannot and does not warrant the accuracy, correctness, or completeness of any such interpretation, research, analysis, data, results, estimates, or recommendation. The customer acknowledges that it is accepting the services "as is," that Schlumberger makes no representation or warranty, express or implied, of any kind or description in respect thereto, and that such services are delivered with the explicit understanding and agreement that any action taken based on the services received shall be at its own risk and responsibility, and no claim shall be made against Schlumberger as a consequence thereof.

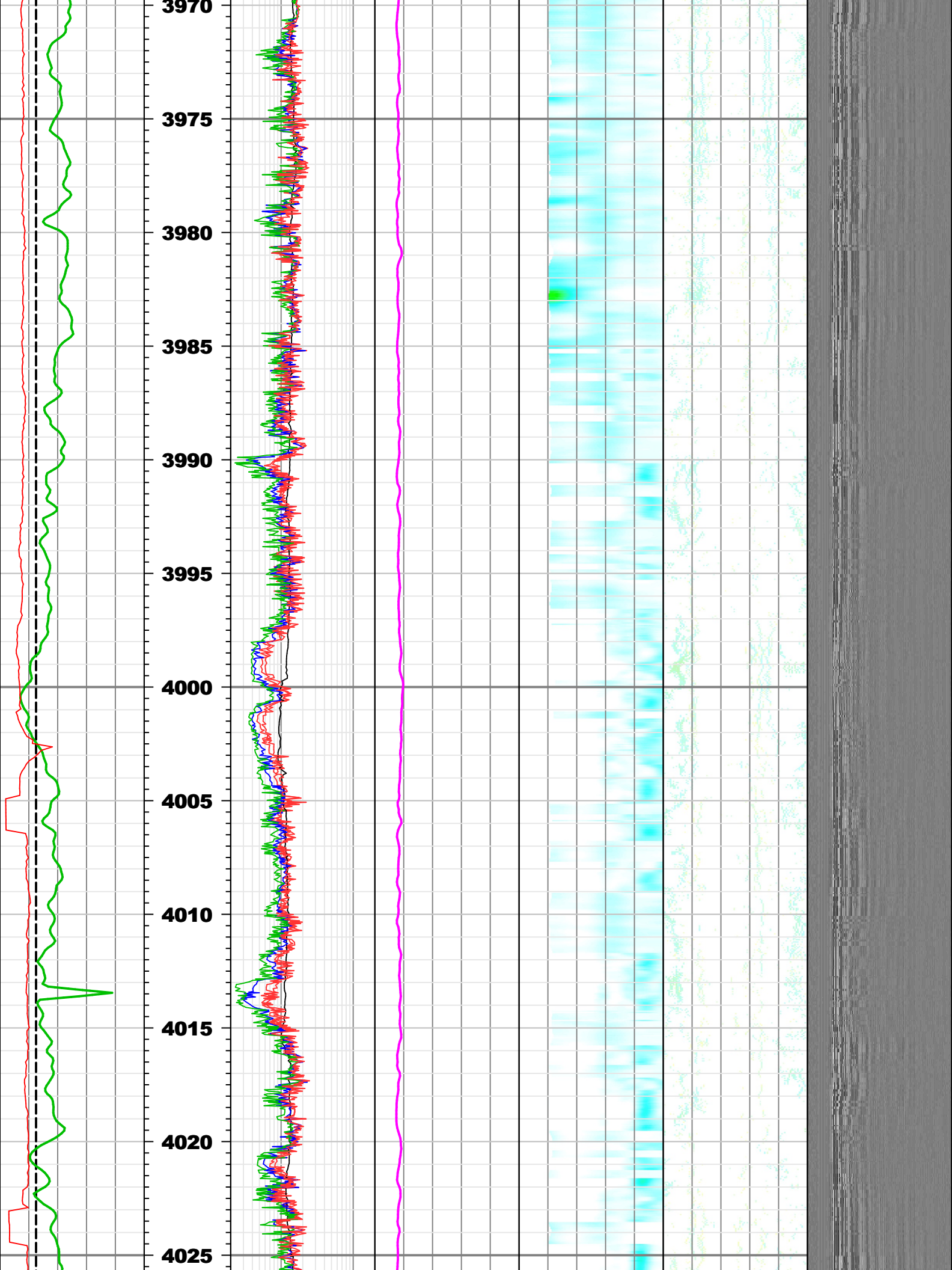
Svc. Order #: Location:	Interpretation Center: Techlog Vers: 2017.2	Analyst: XIA	Process Date: 11 Mar 2019
----------------------------	--	--------------	---------------------------

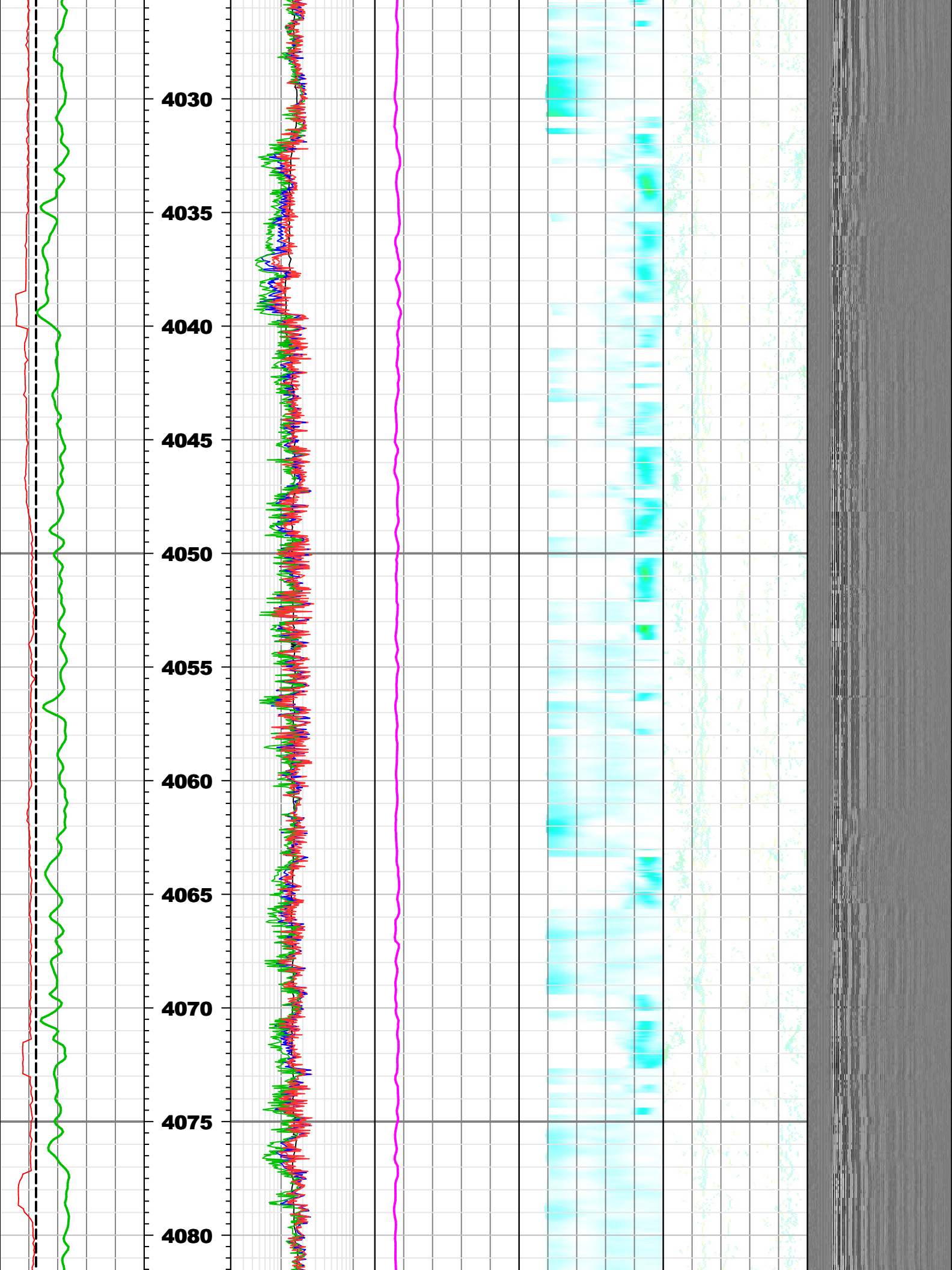
Remarks:

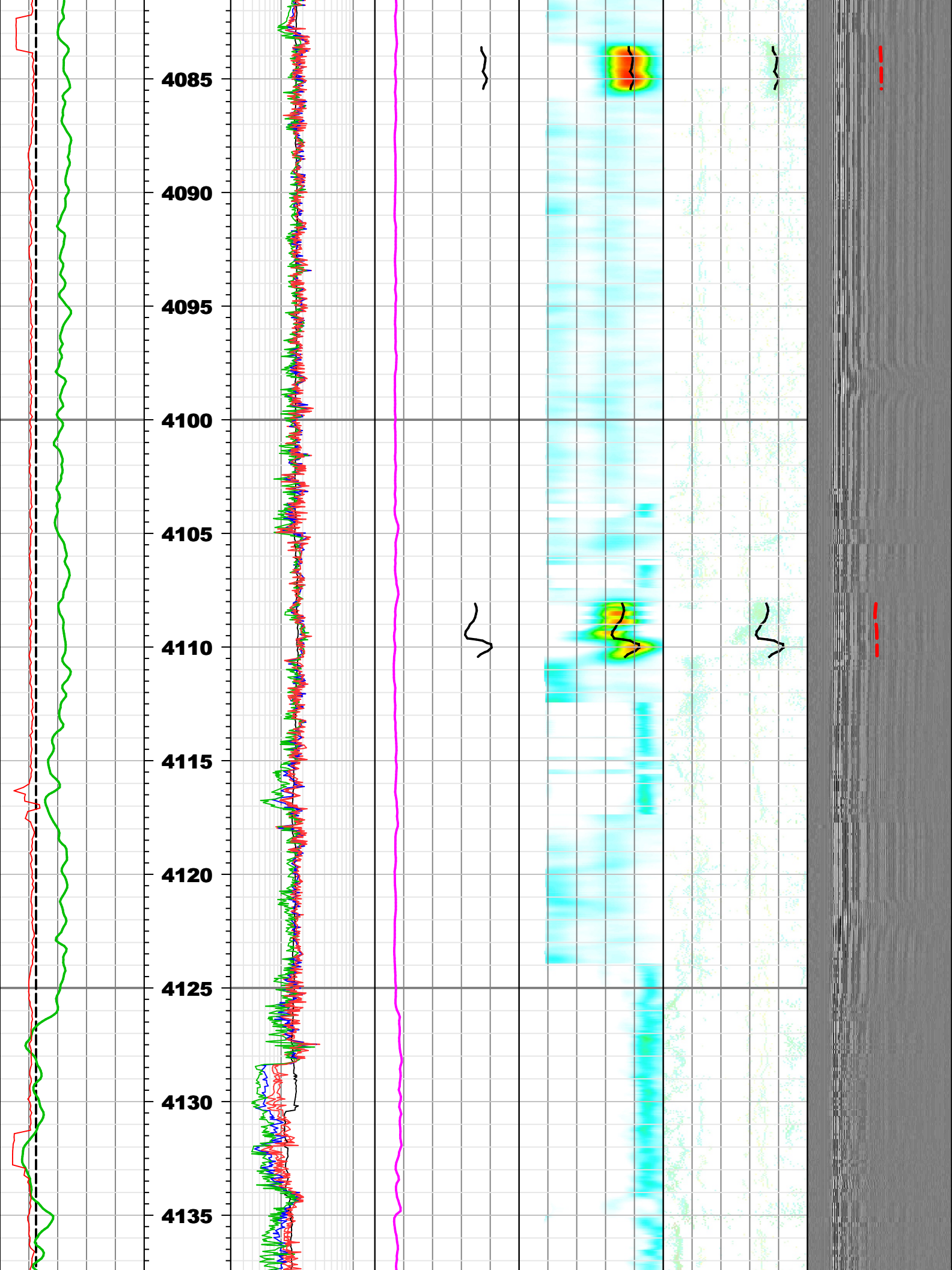
Resistivity logs are from MicroScope.
Compressional slowness log was processed by Leaky-P signal in Monopole low frequency Receiver mode.
Multi-shot STC processing with 7 NRSA (Numbers of receivers in sub-array) was performed.
Shear slowness log was processed by Quadrupole Inversion Receiver mode. Multi-shot STC processing with 7 NRSA (Numbers of receivers in sub-array) was performed.

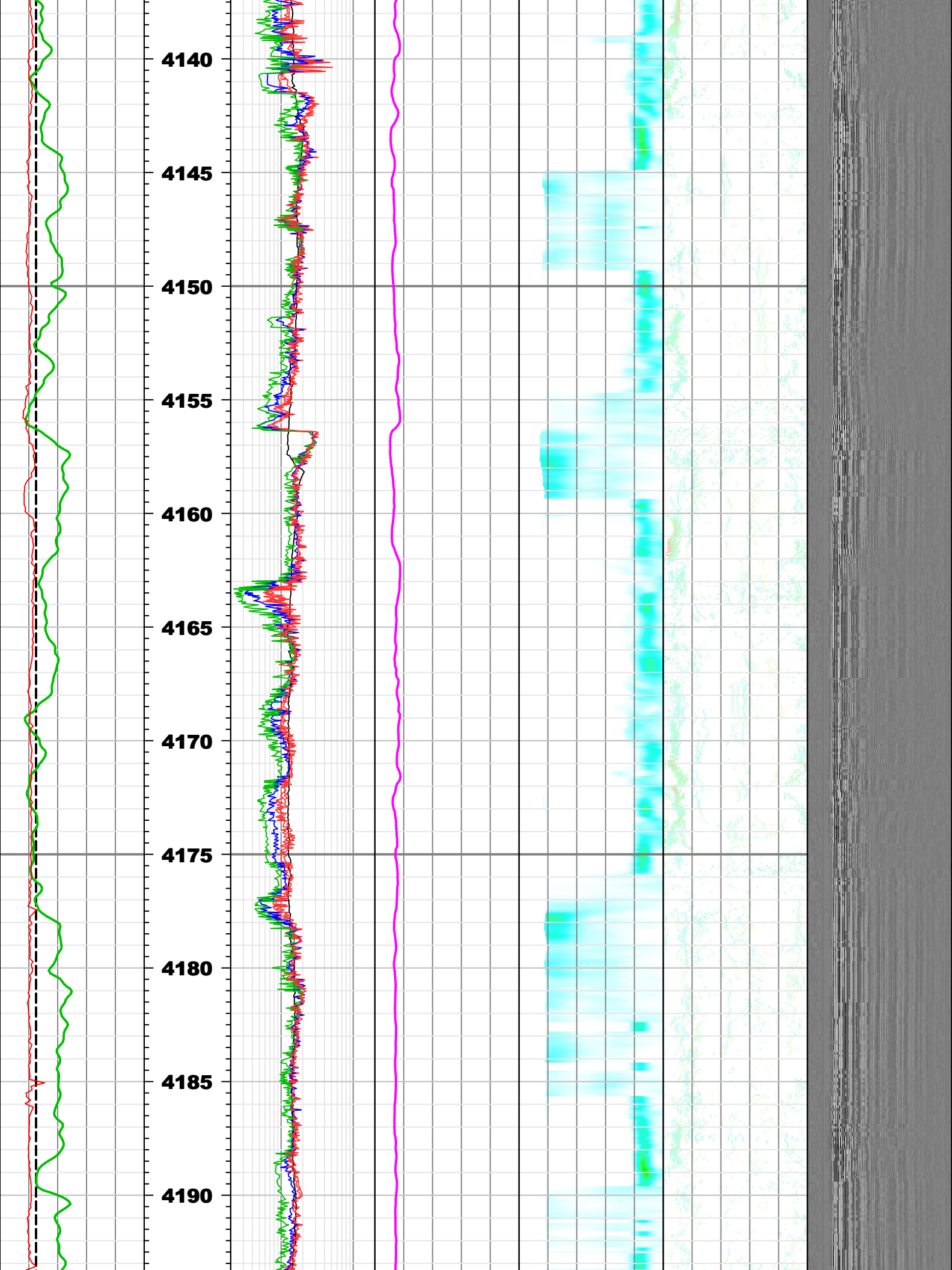


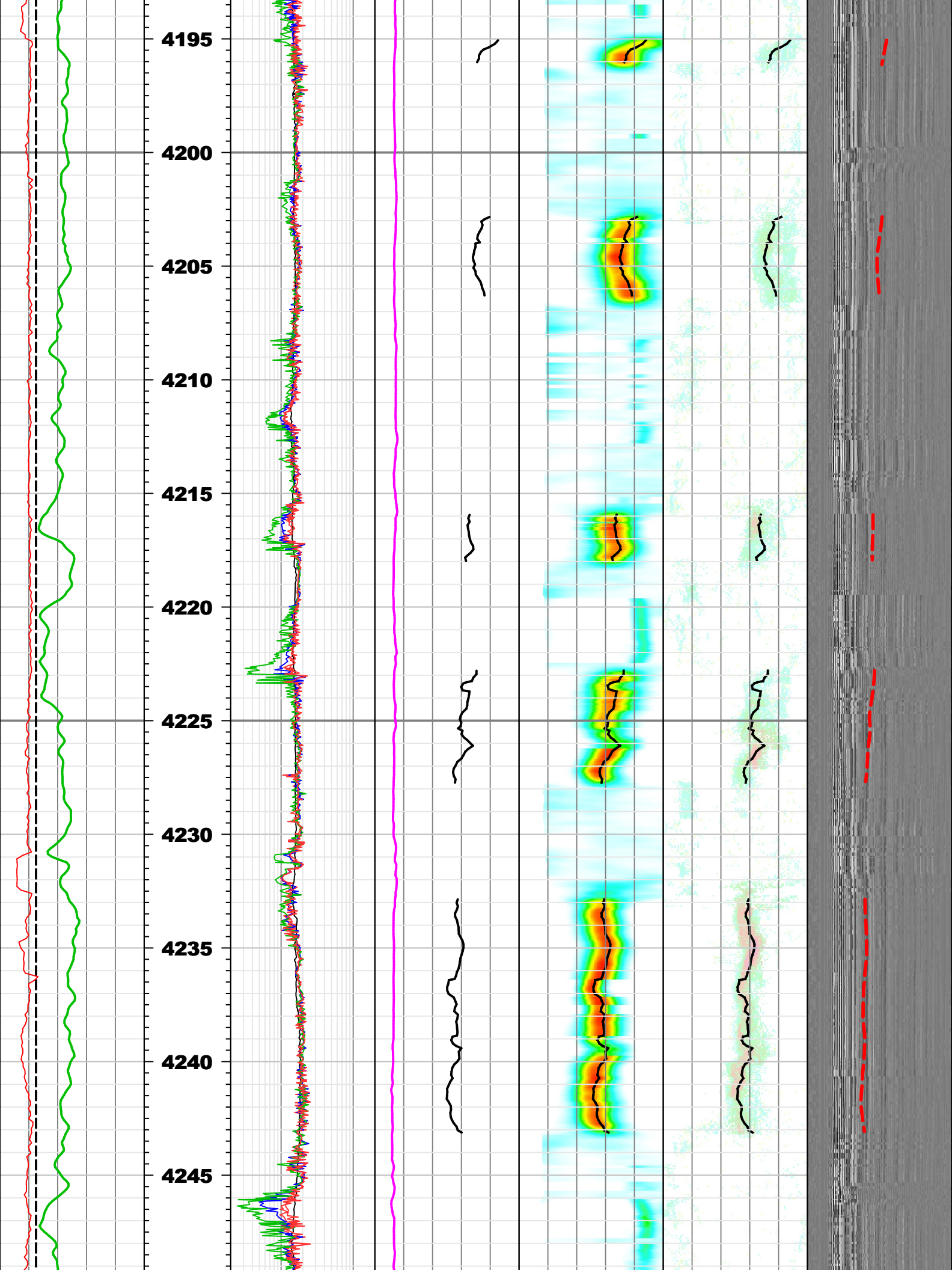


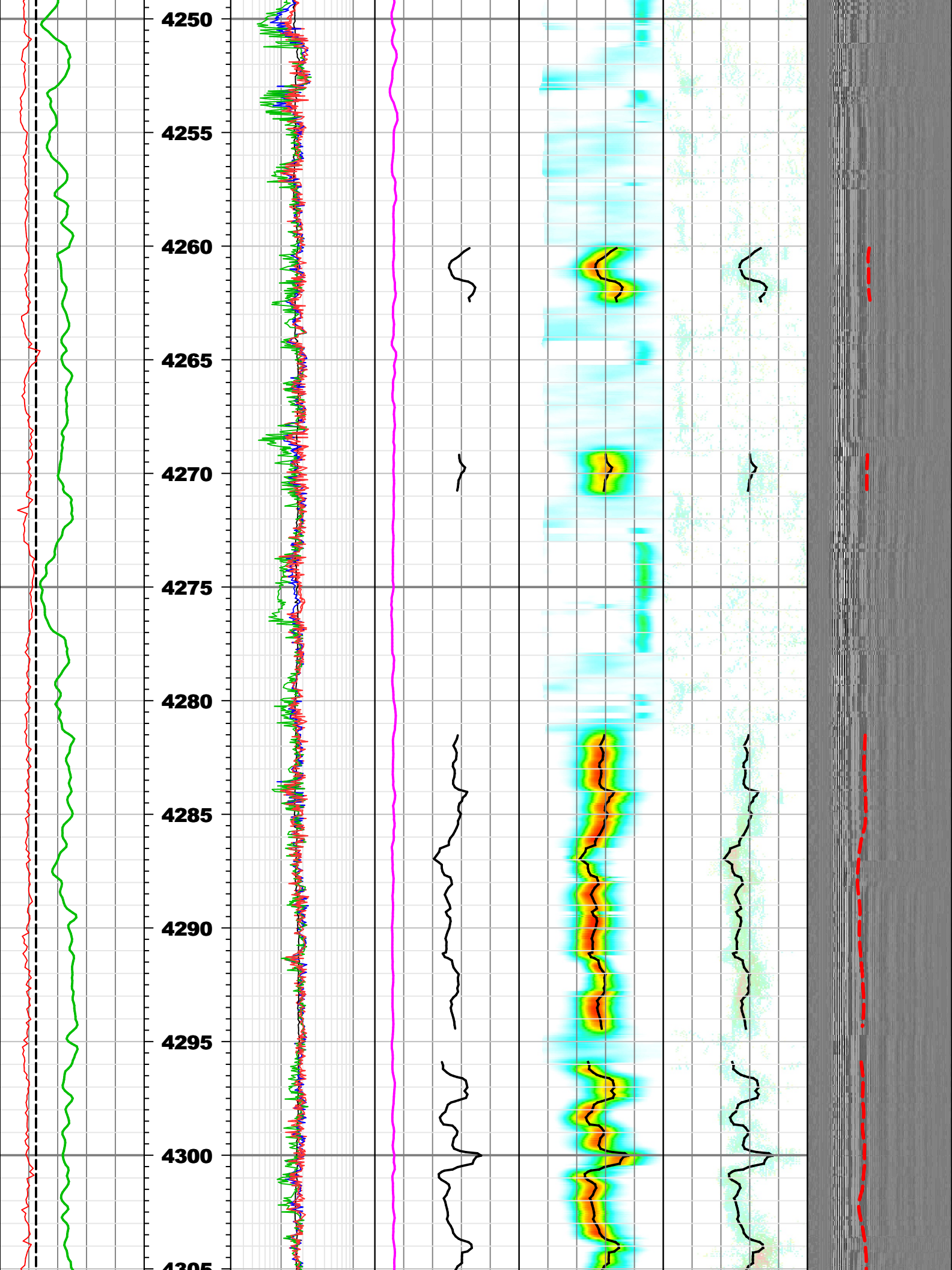


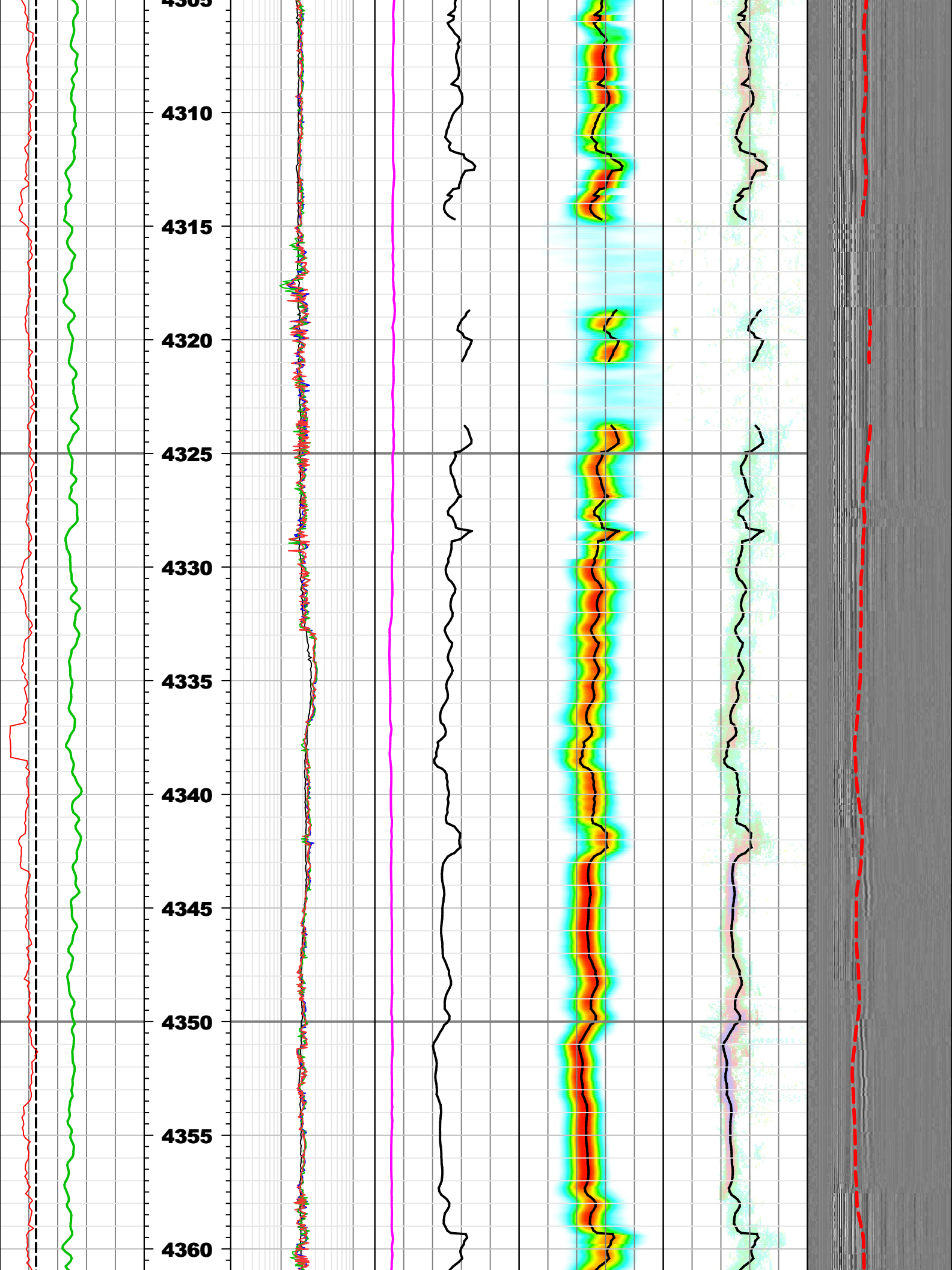


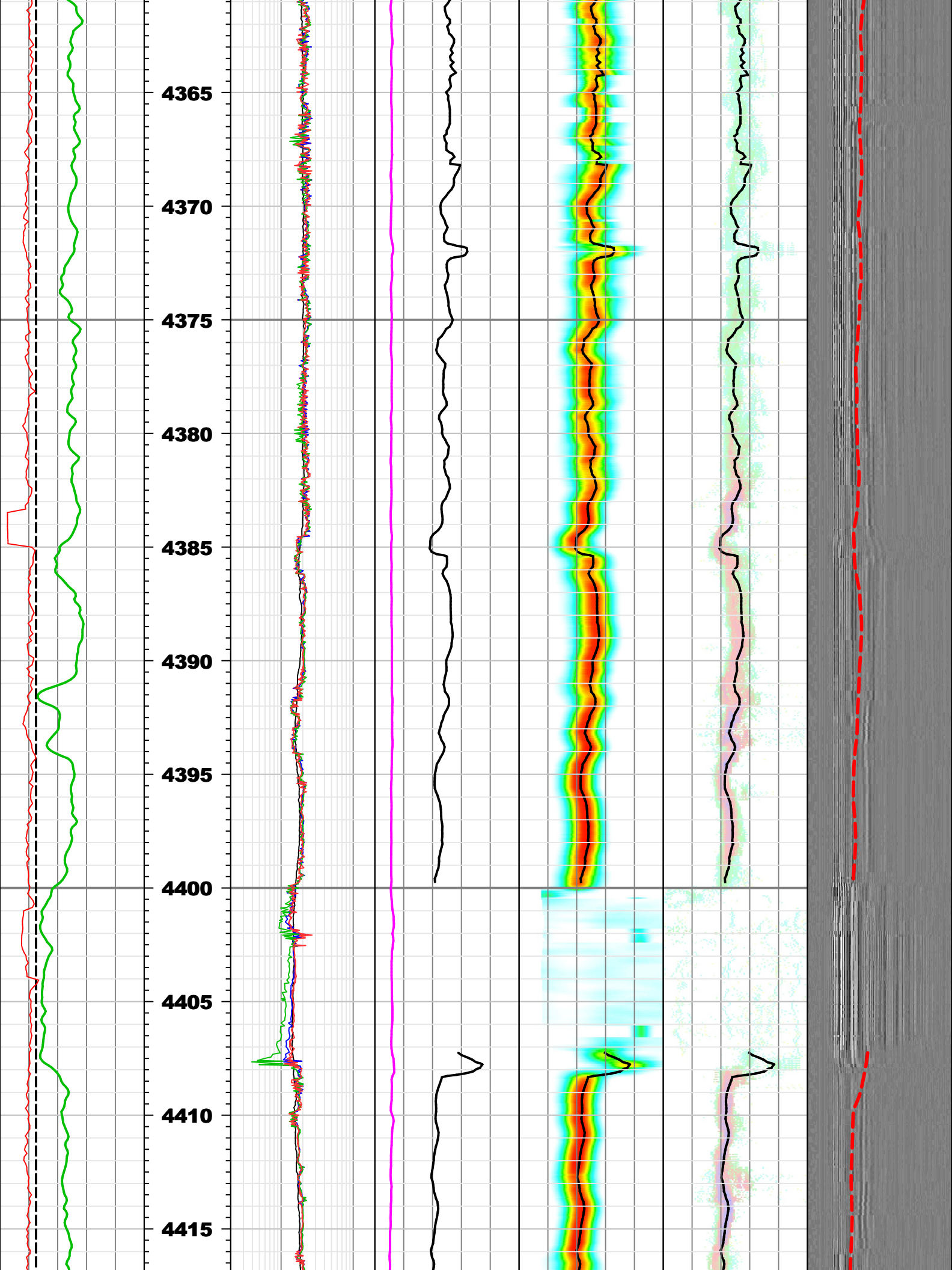


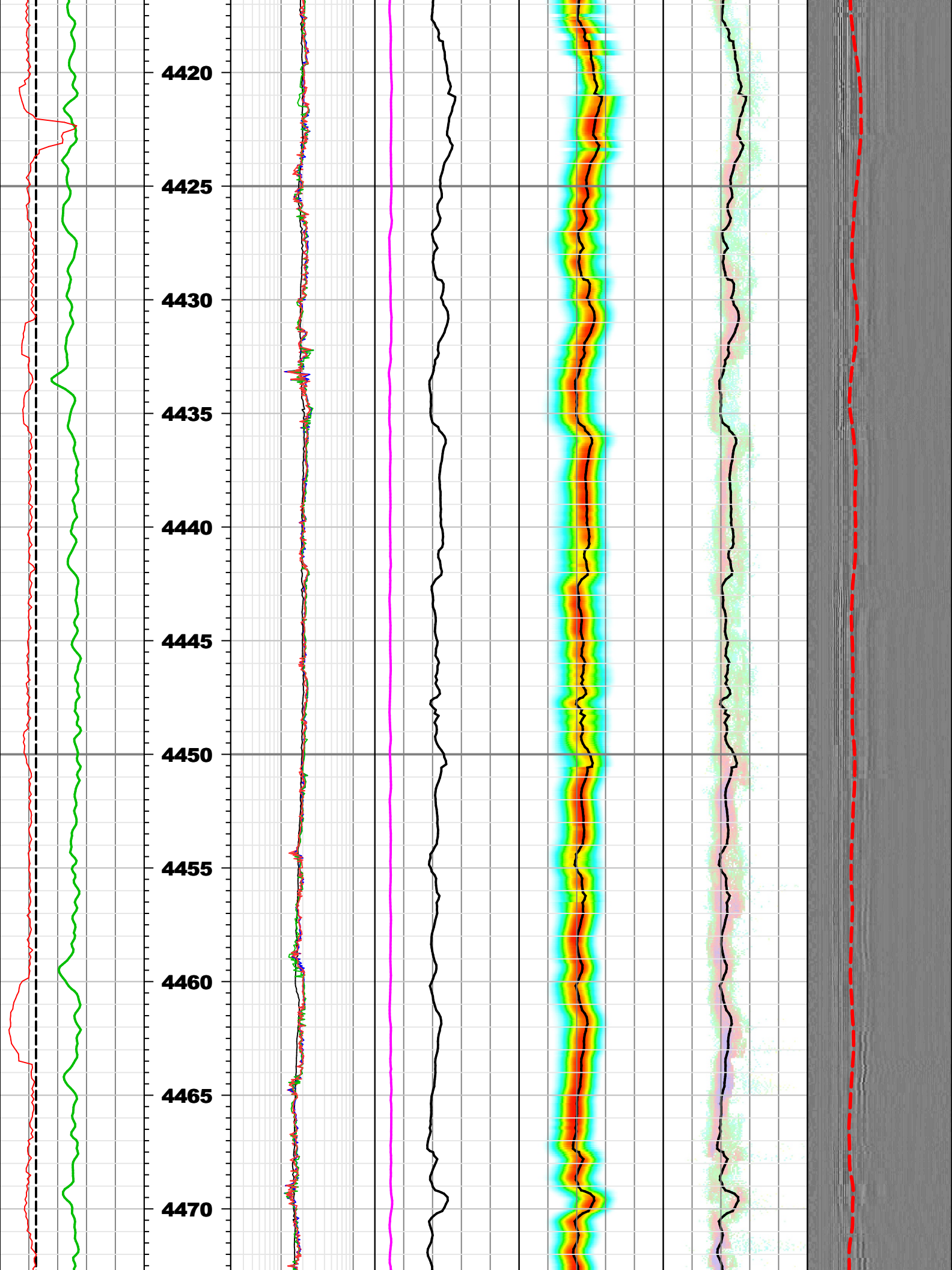


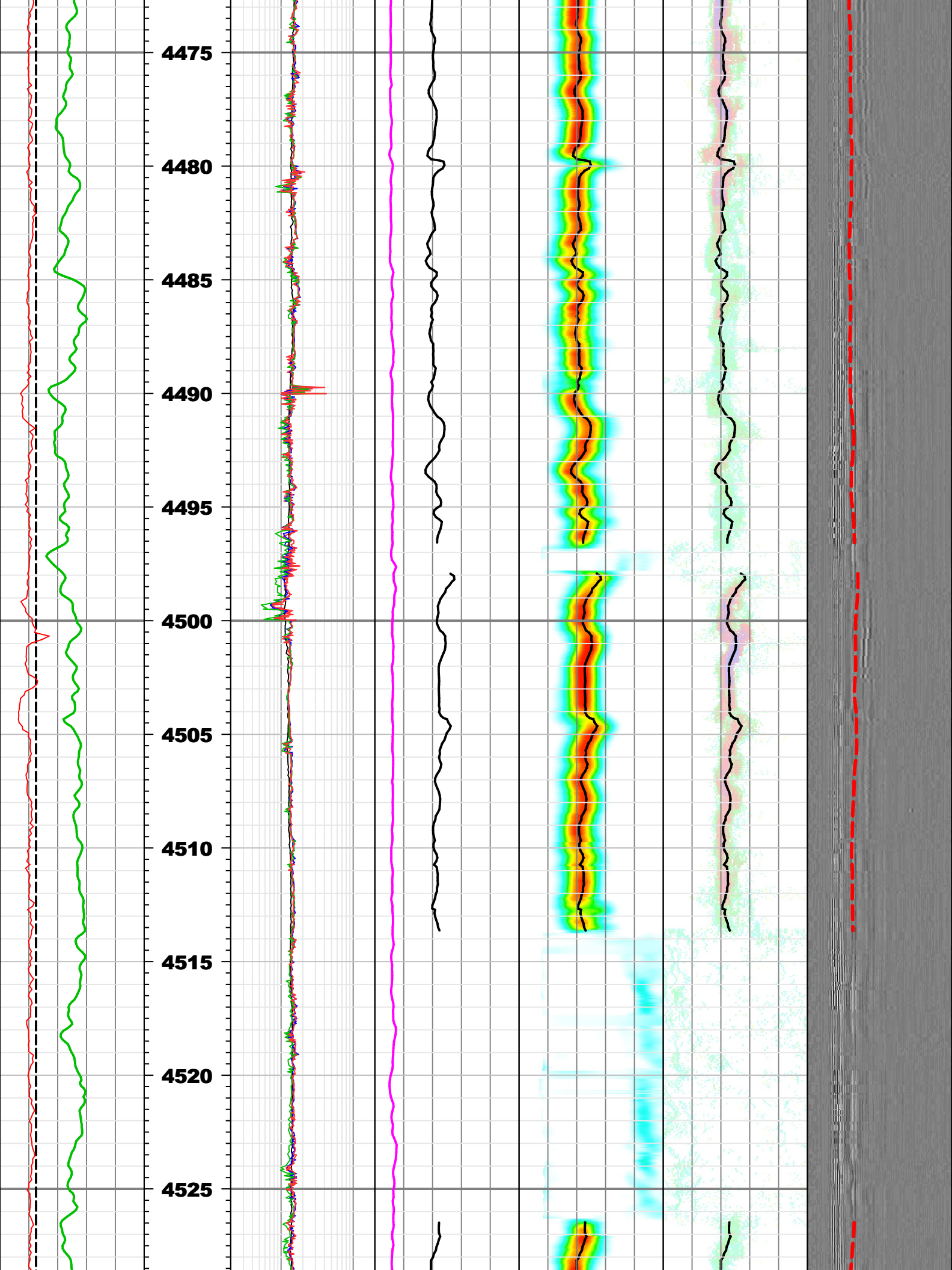


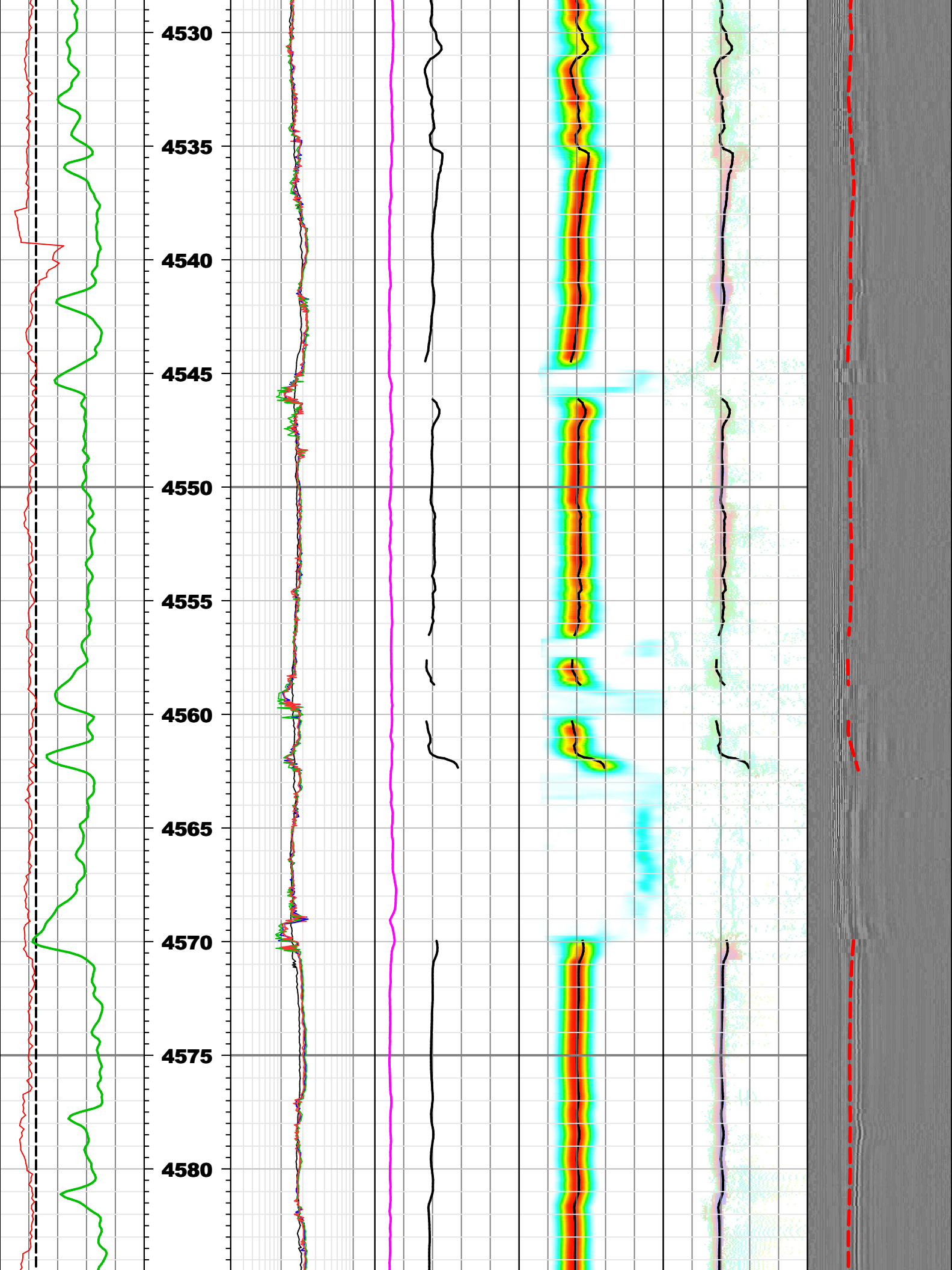


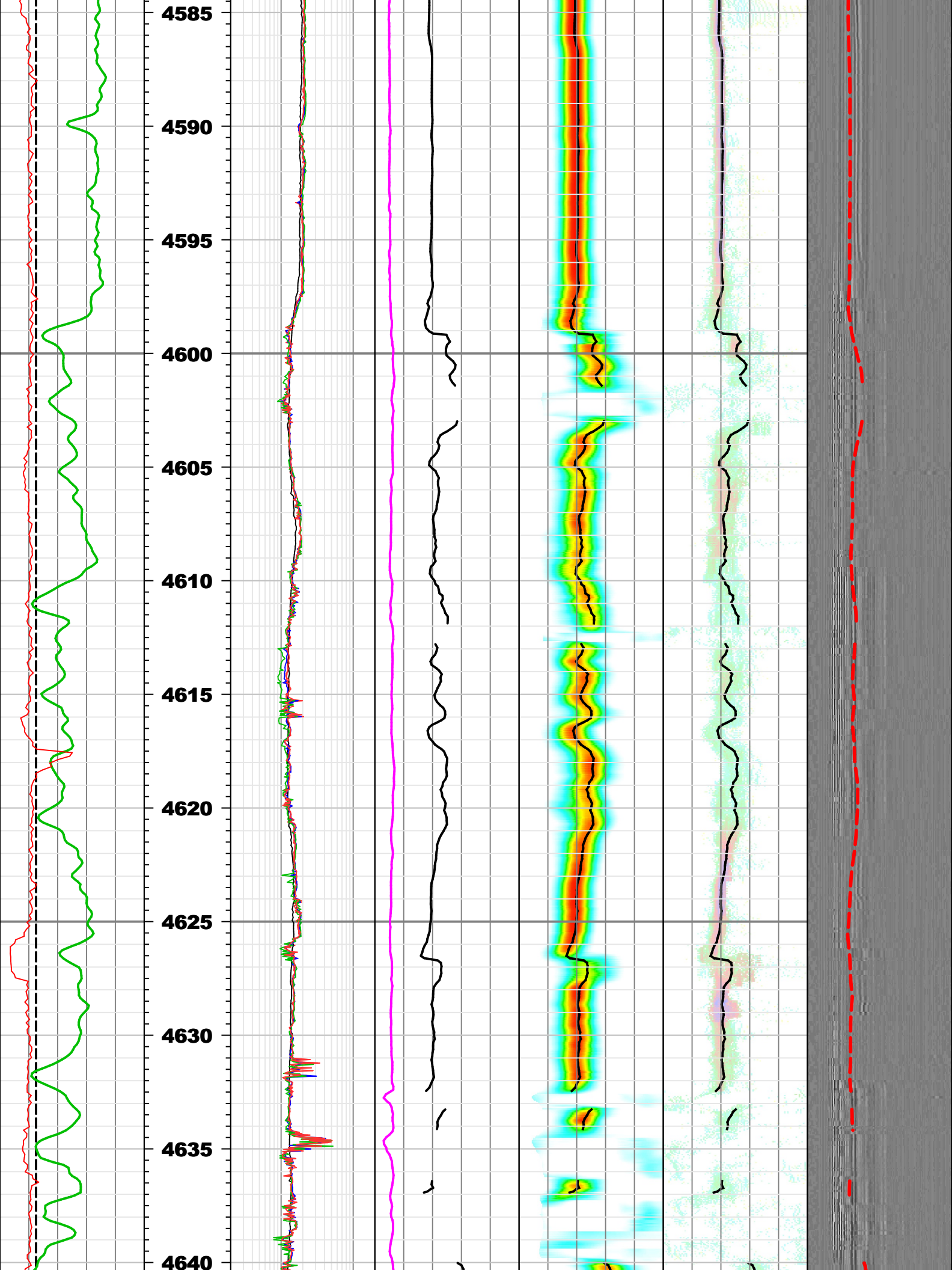


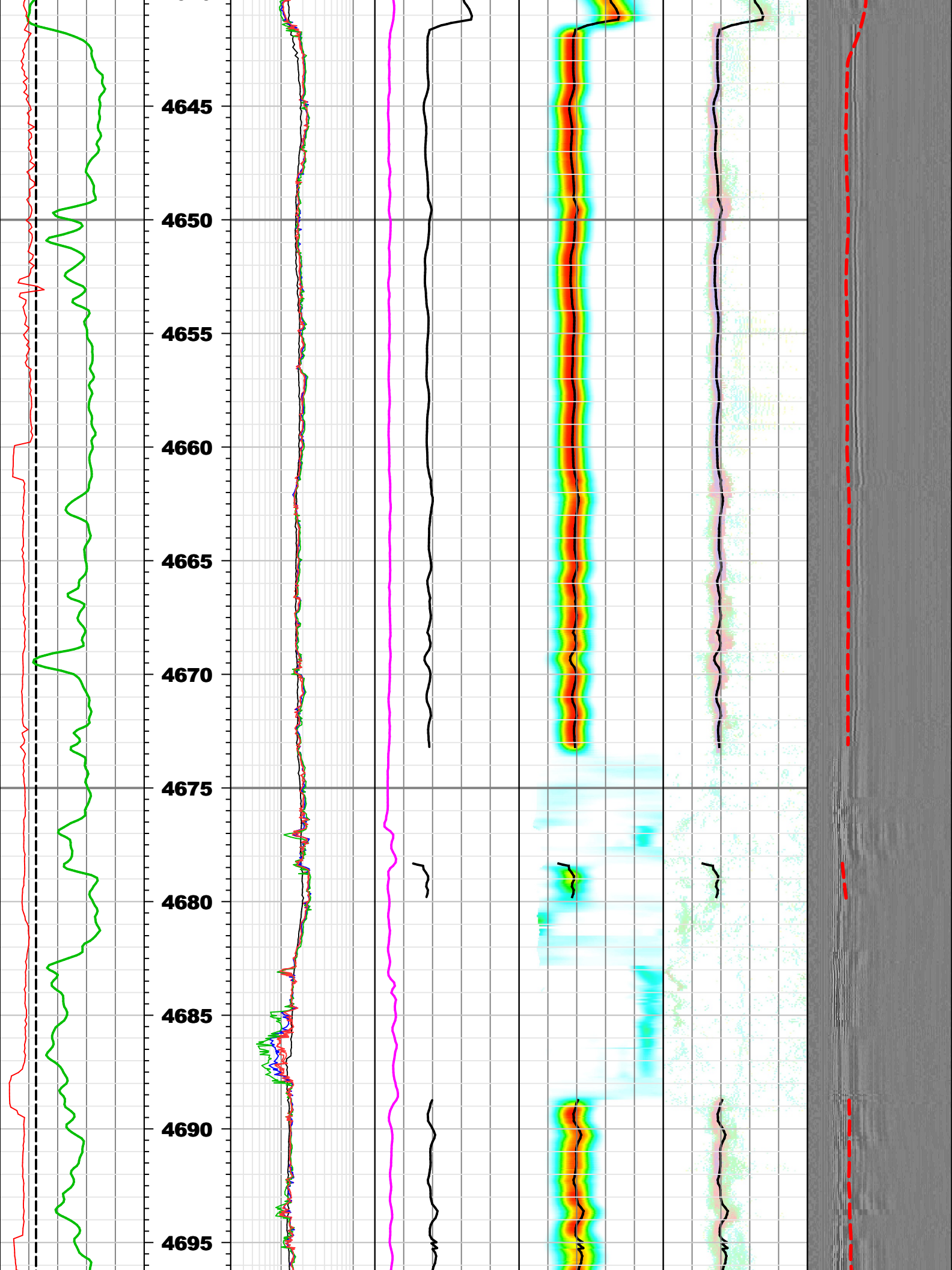


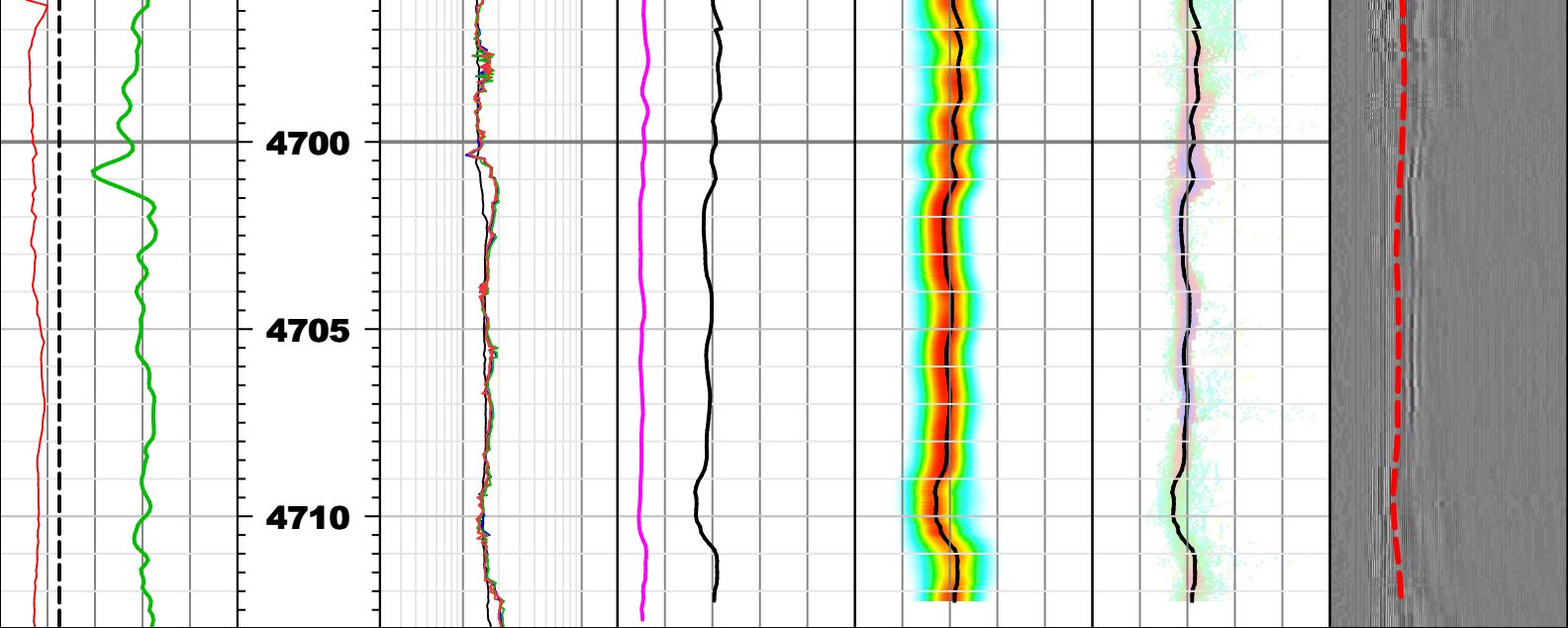












ROP5 0 m/h 100 GR_ARC 0 gAPI 150 BS 6 in 16		Referenc (m) 1:200	RES_BX 0.2 ohm.m 20					
			RES_BS 0.2 ohm.m 20					
			RES_BM 0.2 ohm.m 20					
			RES_BIT 0.2 ohm.m 20	DTSH_QPINV 60 us/ft 760	COHPR_QPINV 60 us/ft 740	SFA_QPINV 60 us/ft 740	WFA_QPT - R 6 0 us 10200	
			RES_BD 0.2 ohm.m 20	DTCO_ML_LP_R 60 us/ft 760	DTSH_QPINV 60 us/ft 740	DTSH_QPINV 60 us/ft 740	TISH_QPINV_R6 0 us 10200	
					0.00 0.23 0.39 0.56 0.72 1.01 ST_Projection_SCOPE	0.00 0.23 0.40 0.57 0.73 1.00 SFA	VDI -2891.61	

COMPANY: MQJ/JAMSTEC
 WELL: C0024A
 FIELD: C0024
 COUNTRY: Japan



Date Logged: 5 Mar 2019
 Date Processed: 11 Mar 2019
 Surface Location: 33° 2' 2.638" N 136° 47' 23.946"E

Elevations: KB: DF: 28.500 m GL: -3841.5 m
 API Number: JPJ-2018-010