



Weatherford

Resistivity Gamma Ray Log

1:200

Main Pass

COMPANY IODP Expedition 347 Baltic Sea
 WELL BSB-7/Hole 65A
 FIELD Sweden
 PROVINCE/COUNTY Sweden
 COUNTRY/STATE Sweden
 LOCATION

Latitude 55 28.094 N Other Services
 Longitude 15 28.631 E None

Permanent Datum M.S.L., Elevation 84.32 metres
 Log Measured From GL
 Drilling Measured From GL

Elevations: metres
 KB 87.22
 DF 87.22
 GL 0.00

Date	24-OCT-2013		
Run Number	1		
Service Order	50004126		
Depth Driller	77.00	metres	
Depth Logger	42.90	metres	
First Reading	41.00	metres	
Last Reading	15.10	metres	
Casing Driller	15.10	metres	
Casing Logger	15.10	metres	
Bit Size	8.500	inches	
Hole Fluid Type	Sea Water		
Density / Viscosity			
PH / Fluid Loss			
Sample Source			
Rm @ Measured Temp			
Rmf @ Measured Temp			
Rmc @ Measured Temp			
Source Rmf / Rmc			
Rm @ BHT			
Time Since Circulation	0.5 hrs		
Max Recorded Temp			
Equipment / Base	16104		
Recorded By	C.Sedlatschek		
Witnessed By	A.Fehr		

REMARKS

1. Well Manager Version 13.07.1135.
2. Log correlated to drill bit depth at 15.11m.
3. Depth Offset for Resistivity Log DO = +1.5m.

BOREHOLE RECORD

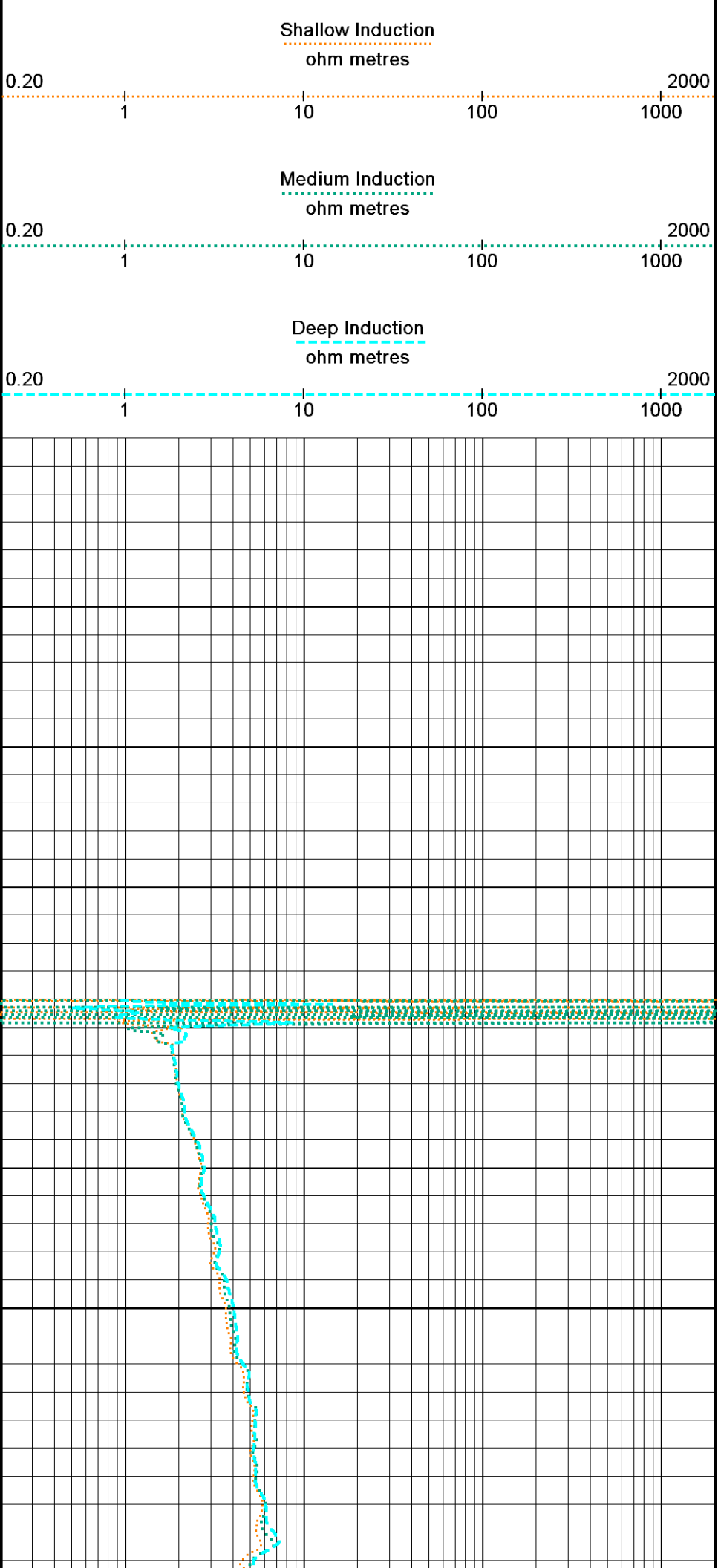
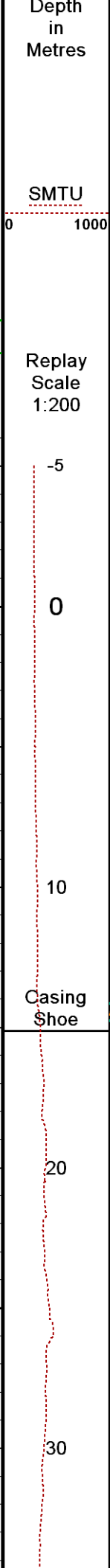
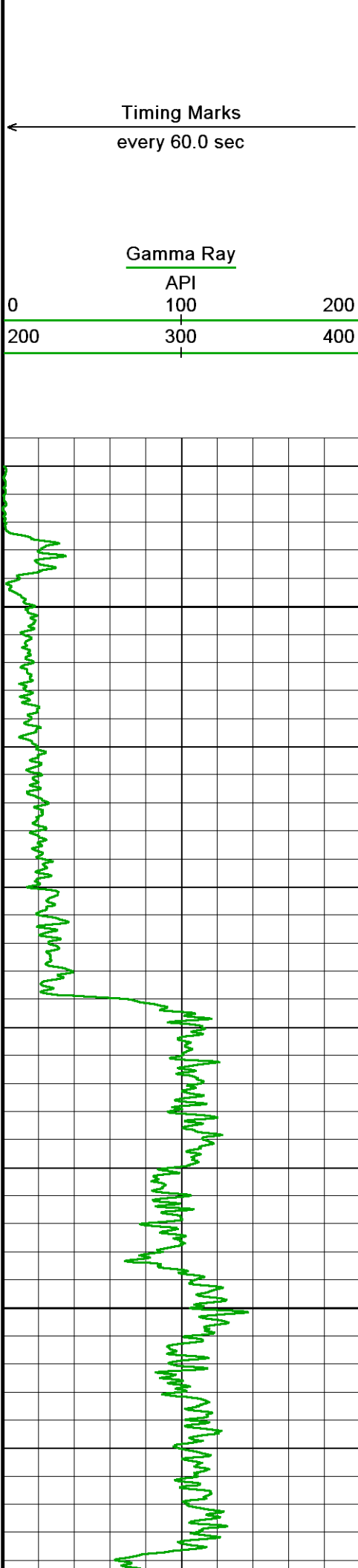
Last Edited: 25-OCT-2013 03:57

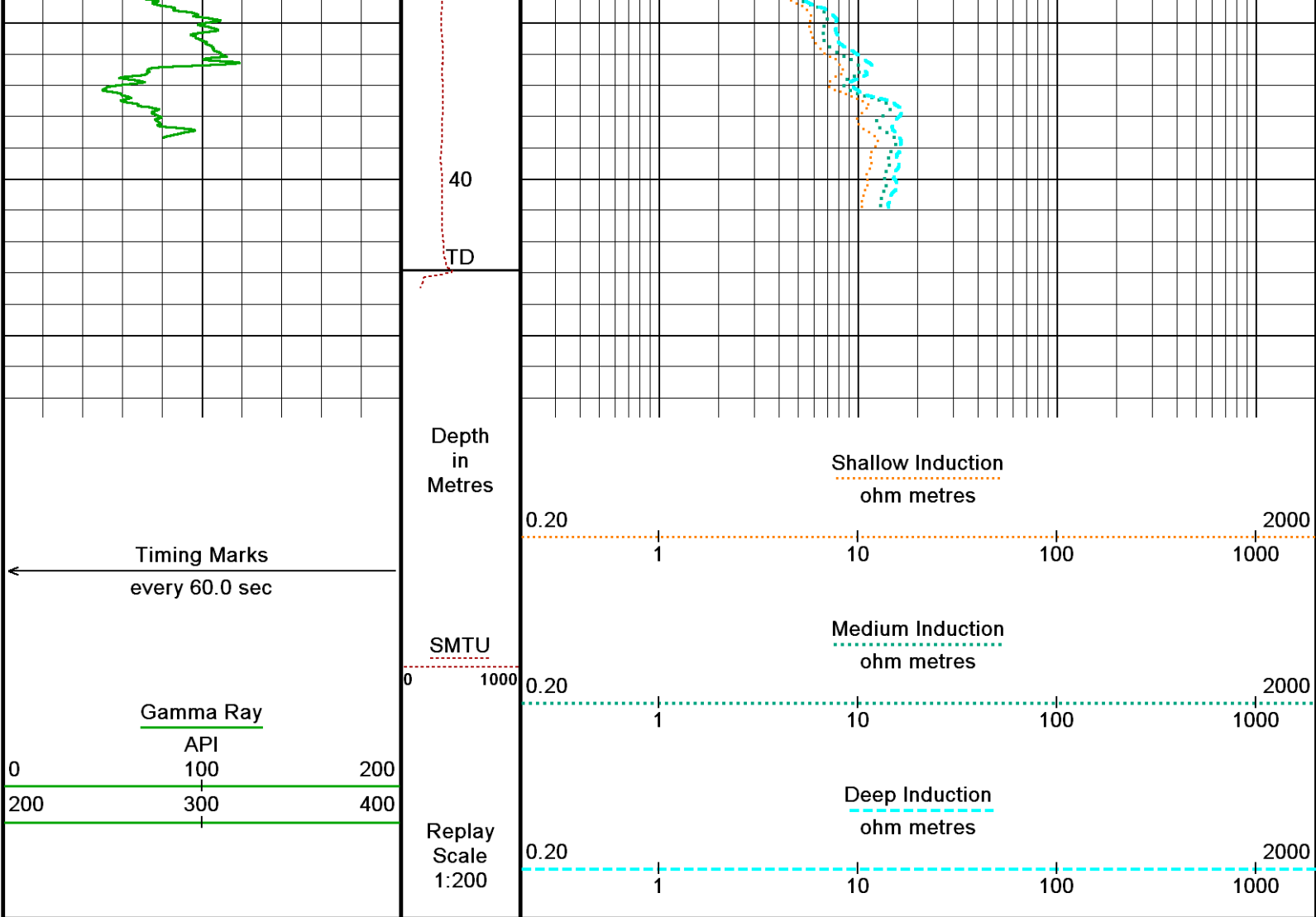
Bit Size inches	Depth From metres	Depth To metres
8.500	0.00	41.00

CASING RECORD

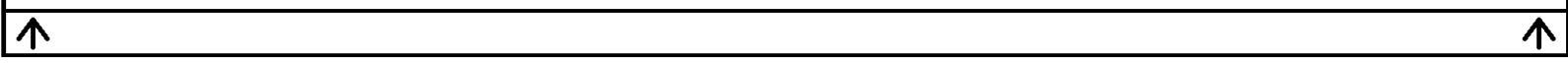
Type	Size inches	Depth From metres	Shoe Depth metres	Weight pounds/ft
	5.500	0.00	15.11	23.00

All interpretations are opinions based on inferences from electrical or other measurements and we cannot, and do not, guarantee the accuracy or correctness of any interpretations, and we shall not, except in the case of gross or wilful negligence on our part, be liable or responsible for any loss, costs, damages or expenses incurred or sustained by anyone resulting from any interpretation made by any of our officers, agents or employees. These interpretations are also subject to our general terms and conditions in our price schedule.





Depth Based Data - Maximum Sampling Increment 2.5cm
 Filename: C:\Well Manager\mai461mcg387_splice_BSB_7.dta
 System Versions: Plotted with 13.07.1135
 Plotted on 25-OCT-2013 04:10
 Recorded on 24-OCT-2013 14:12



BEFORE SURVEY CALIBRATION

C:\Well Manager\mai461mcg387_BSB_7_Main_Pass_playback.dta

General Constants All 000

Last Edited on 01-OCT-2013,00:16

General Parameters

Mud Resistivity	3.210	ohm-metres
Mud Resistivity Temperature	20.000	degrees C
Water Level	0.000	metres
Borehole Fluid Processing	Wet Hole	

Hole/Annular Volume and Differential Caliper Parameters

HVOL Method	8 Arm CMI	
HVOL Caliper 1	N/A	
HVOL Caliper 2	N/A	
Annular Volume Diameter	7.000	inches
Caliper for Differential Caliper	None	

Rwa Parameters

Porosity used	N/A
Resistivity used	N/A
RWA Constant A	N/A
RWA Constant M	N/A
SW/APOR Tool Source	0.000

	Measured	Calibrated (API)
Background	176	122
Calibrator (Gross)	1239	857
Calibrator (Net)	1063	735

Gamma Constants MCG-D.J 387

Last Edited on 12-SEP-2013,01:55

Gamma Calibrator Number	097	
Mud Density	1.00	gm/cc
Caliper Source for Processing	Bit Size	
Tool Position	Eccentred	
Concentration of KCl		kppm
K Mud Type	Chloride	
K Mud Concentration	0.00	%

Induction Calibration MAI-C.A 461

Base Calibration on 28-AUG-2013 12:43

Field Check on 28-AUG-2013 12:46

Base Calibration

Test Loop Calibration

Channel	Measured		Calibrated (mmho/m)	
	Low	High	Low	High
1	16.9	458.4	9.3	967.1
2	5.9	364.5	7.6	822.1
3	3.5	248.7	5.3	566.5
4	1.8	128.8	2.6	279.5

Array Temperature 34.7 Deg C

Channel	Base Check (mmho/m)		Field Check (mmho/m)	
	Low	High	Low	High
1			-3.6	2114.0
2			14.9	1979.6
3			14.7	1704.6
4			10.4	1148.6
Deep			8.0	1094.4
Medium			23.5	2267.9
Shallow			23.3	2948.6

Array Temperature 35.8 Deg C

Induction Constants MAI-C.A 461

Last Edited on 10-OCT-2013,22:34

Induction Model	VECTAR	
Caliper for Borehole Corr.	Constant Value	
Hole Size for Borehole Correction	8.500	inches
Tool Centred	No	
Stand-off Type	Pineapple	
Stand-off	0.49	inches
Number of Fins on Stand-off	5.0000	
Stand-off Fin Angle	72.00	degrees
Stand-off Fin Width	1.3878	inches
Borehole Corr. Rm Source	Constant Value	
Temp. for Rm Corr.	N/A	
Squasher Start	0.0020	mhos/metre
Squasher Offset	0.0000	mhos/metre

Borehole Normalisation

DRM1	0.0000	DRC1	0.0000
DRM2	0.0000	DRC2	0.0000
MRM1	0.0000	MRC1	0.0000
MRM2	0.0000	MRC2	0.0000
SRM1	0.0000	SRC1	0.0000
SRM2	0.0000	SRC2	0.0000

Calibration Site Corrections

Channel 1	0.00	mmhos/metre
Channel 2	0.00	mmhos/metre
Channel 3	0.00	mmhos/metre
Channel 4	0.00	mmhos/metre

Apparent Porosity and Water Saturation Constants

Archie Constant (A)	1.00
---------------------	------

Cementation Exponent (M)	2.00	
Saturation Exponent (N)	2.00	
Saturation of Water for Apor	100.00	percent
Resistivity of Water for Apor and Sw	0.05	ohm-m
Resistivity of Mud Filtrate for Sw	0.00	ohm-m
Source for Rt	0.00	
Source for Rxo	0.00	

DOWNHOLE EQUIPMENT

C:\Well Manager\mai461mcg387_BSB_7_Main_Pass_playback.dta

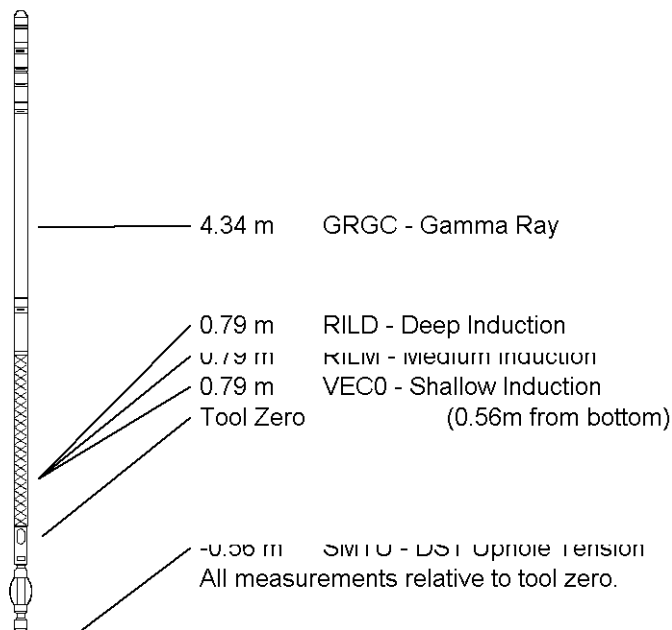
CBH-C, Cablehead, 11 pin
 CBH-CA 171 LG: 0.73 m WT: 24.3 lb OD: 57 mm

11C-11B MTA-K.A Compact Tool Adaptor
 MTA-K.A 130 LG: 0.47 m WT: 13.2 lb OD: 57 mm

Compact Comms Gamma
 MCG-D.J 387 LG: 2.65 m WT: 63.9 lb OD: 57 mm

Compact Induction
 MAI-C.A 461 LG: 3.82 m WT: 48.5 lb OD: 57 mm

Total Length: 7.66 m Weight: 149.9 lb



COMPANY	IODP Expedition 347 Baltic Sea
WELL	BSB-7/Hole 65A
FIELD	Sweden
PROVINCE/COUNTY	Sweden
COUNTRY/STATE	Sweden

Elevation Kelly Bushing	87.22	metres	First Reading	41.00	metres
Elevation Drill Floor	87.22	metres	Depth Driller	77.00	metres
Elevation Ground Level	0.00	metres	Depth Logger	42.90	metres



Resistivity Gamma Ray Log

1:200

Main Pass

Weatherford[®]