

Company: Lamont Doherty

Well: Site 1301 B

Field: Expedition 301

County: Juan de Fuca

State: Oregon

Dipole Shear Sonic Imager,

Gamma Ray.

County: Juan de Fuca
Field: Expedition 301
Location: Site 1301 B
Well: Lamont Doherty
Company:

LOCATION		Elev.:	K.B.	11.3 m
Permanent Datum:	Mean Sea Level		G.L.	-2667.8 m
Log Measured From:	Drill Floor	11.3 m	above Perm. Datum	
Drilling Measured From:	Drill Floor	D.F.	11.3 m	

API Serial No.	Max. Hole Devi.	Longitude	Latitude

Logging Date	1-Aug-2004		
Run Number	Three		
Depth Driller	3250.67 m		
Schlumberger Depth	3245 m		
Bottom Log Interval	3097 m		
Top Log Interval	2667.8 m		
Casing Driller Size @ Depth	10.750 in @ 3013 m		
Casing Schlumberger	3013 m		
Bit Size	9.875 in		
Type Fluid In Hole	Sepiolite		
Density	1.1 g/cm3		
Fluid Loss	PH		
Source Of Sample			
RM @ Measured Temperature	0.322 ohm.m @ 20 degC		
RMF @ Measured Temperature	@ @		
RMC @ Measured Temperature	@ @		
Source RMF	RMC		
RM @ MRT	RMF @ MRT	@ @	@ @
RM @ MRT	0.593 @ 1		
Maximum Recorded Temperatures	1 degC @ 1		
Circulation Stopped	Time		
Logger On Bottom	1-Aug-2003	23:00	
Unit Number	2082	IODP Webster	
Recorded By	Javier Espinosa		
Witnessed By	Gerardo Iturrino		

Logging Date	Run 1	Run 2	Run
Run Number			
Depth Driller			
Schlumberger Depth			
Bottom Log Interval			
Top Log Interval			
Casing Driller Size @ Depth	@		
Casing Schlumberger			
Bit Size			
Type Fluid In Hole			
Density			
Fluid Loss	PH		
Source Of Sample			
RM @ Measured Temperature	@		
RMF @ Measured Temperature	@ @		
RMC @ Measured Temperature	@ @		
Source RMF	RMC		
RM @ MRT	RMF @ MRT	@ @	@ @
RM @ MRT	0.593 @ 1		
Maximum Recorded Temperatures	1 degC @ 1		
Circulation Stopped	Time		
Logger On Bottom	1-Aug-2003	23:00	
Unit Number	2082	IODP Webster	
Recorded By	Javier Espinosa		
Witnessed By	Gerardo Iturrino		

DISCLAIMER

THE USE OF AND RELIANCE UPON THIS RECORDED-DATA BY THE HEREIN NAMED COMPANY (AND ANY OF ITS AFFILIATES, PARTNERS, REPRESENTATIVES, AGENTS, CONSULTANTS AND EMPLOYEES) IS SUBJECT TO THE TERMS AND CONDITIONS AGREED UPON BETWEEN SCHLUMBERGER AND THE COMPANY, INCLUDING: (a) RESTRICTIONS ON USE OF THE RECORDED-DATA; (b) DISCLAIMERS AND WAIVERS OF WARRANTIES AND REPRESENTATIONS REGARDING COMPANY'S USE OF AND RELIANCE UPON THE RECORDED-DATA; AND (c) CUSTOMER'S FULL AND SOLE RESPONSIBILITY FOR ANY INFERENCE DRAWN OR DECISION MADE IN CONNECTION WITH THE USE OF THIS RECORDED-DATA.





OTHER SERVICES1 OS1: QAIT OS2: HLDS OS3: APS OS4: HNGS OS5: UBI/FMS	OTHER SERVICES2 OS1: OS2: OS3: OS4: OS5:
--	---

REMARKS: RUN NUMBER 1 Parameters and presentations as per IODP standards Tool ran as per tool sketch below TD not reached due to bad hole conditions	REMARKS: RUN NUMBER 2
Thanks for choosing Schlumberger	

RUN 1			RUN 2		
SERVICE ORDER #:	12C0-301		SERVICE ORDER #:		
PROGRAM VERSION:			PROGRAM VERSION:		
FLUID LEVEL:			FLUID LEVEL:		
LOGGED INTERVAL	START	STOP	LOGGED INTERVAL	START	STOP

EQUIPMENT DESCRIPTION

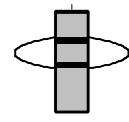
RUN 1		RUN 2	
SURFACE EQUIPMENT			
GSR-U/Y WITM (DTS)-A			

DOWNHOLE EQUIPMENT			
BSP	SP SPARC		31.18 32.40
LEH-MT			32.40
LEH-MT			
DTC-H	CTEM		31.16
ECH-KC	TelStatus		31.44
	ToolStatu		30.53
SGT-N	Gamma Ray		30.25 30.53

SGH-K
SGC-TB 9582

28.85

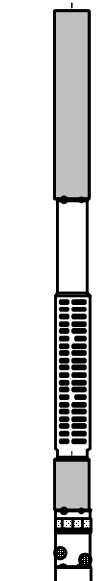
AH-MCD
AH-MCD



28.85

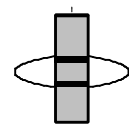
DSST-B
SPAC-B 16
ECH-SD 16
SMDR-BD 8070
SSIJ-BA 10
SMDX-AA 66

26.73



PWF — 11.18

AH-MCD
AH-MCD



11.18

DTA-A
ECH-KE

8.90

MEST-B
MEAH-B 769
MEAC-A 875
MEPH-A 769
GPIC-A 719
MEPC-AB 877
MEDS-B 702

7.68

MEDR MEAC
MEPC MEDS-B
HV DF
Tension GPIT
TOOL ZERO

0.46

0.00

MAXIMUM STRING DIAMETER 4.50 IN
MEASUREMENTS RELATIVE TO TOOL ZERO
ALL LENGTHS IN METERS

Production String	(in)	(m)	Well Schematic	(m)	(in)	Casing String
	OD	ID		MD	MD	

Kelly Bushing Elevation

Derrick Floor Elevation

Mean Sea Level

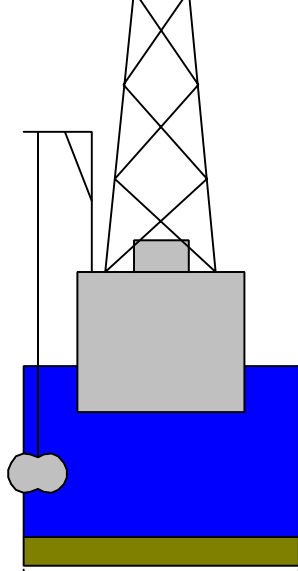
Seismic Gun depth below MSL

11.3

11.3

0.0

3.0



11.3

10.750

Casing String

3013.0 10.750
3013.0 9.875

Casing Shoe
Borehole Segment



Schlumberger

Main Pass

MAXIS Field Log

Output DLIS Files

DEFAULT	FMS_DSI_041LUP	FN:50	PRODUCER	01-Aug-2004 22:59		
REDUCED	FMS_DSI_041LUP	FN:51	PRODUCER	01-Aug-2004 22:59	3094.3 M	2968.3 M

OP System Version: 12C0-301

MCM

MEST-B	12C0-301	DTA-A	12C0-301
DSST-B	12C0-301	SGT-N	12C0-301
DTC-H	12C0-301	BSP	12C0-301

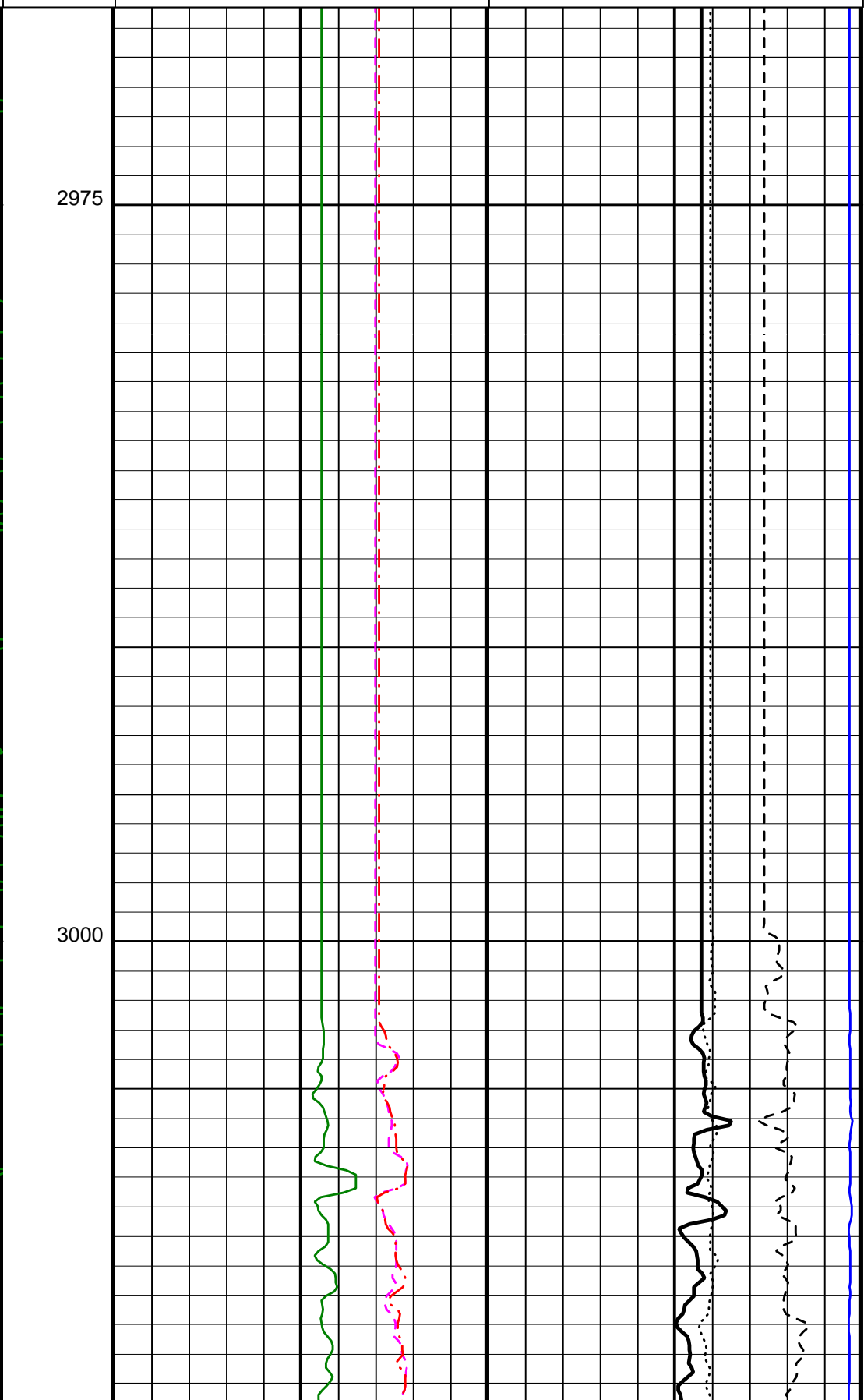
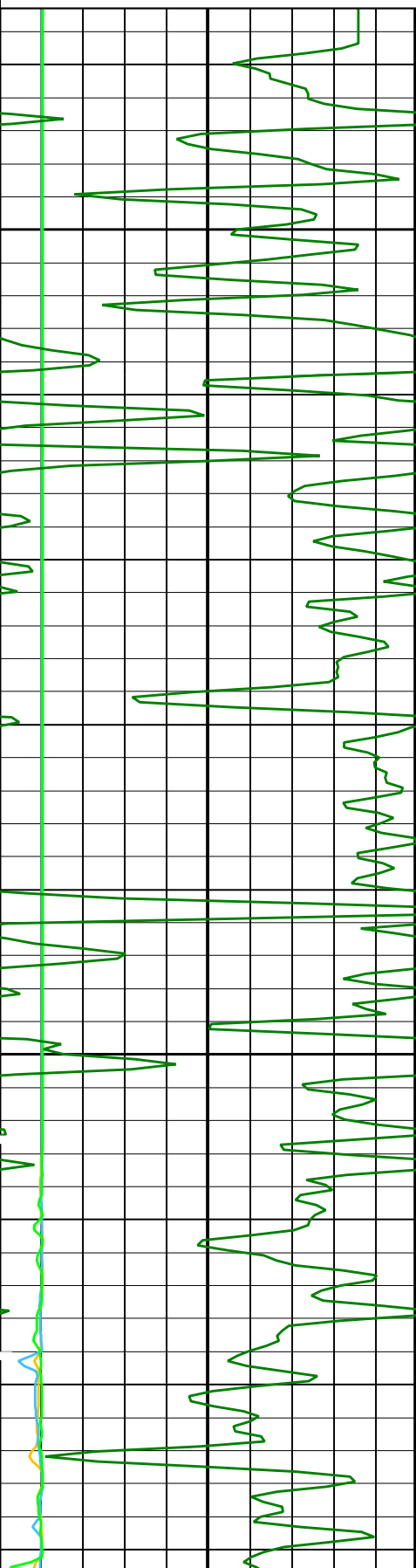
PIP SUMMARY

Time Mark Every 60 S

Peak Coherence / RA - Upper Dipole (CHR2)		Sonic Porosity (SPHI)	
0 (---) 10		0.45 (V/V)	-0.15

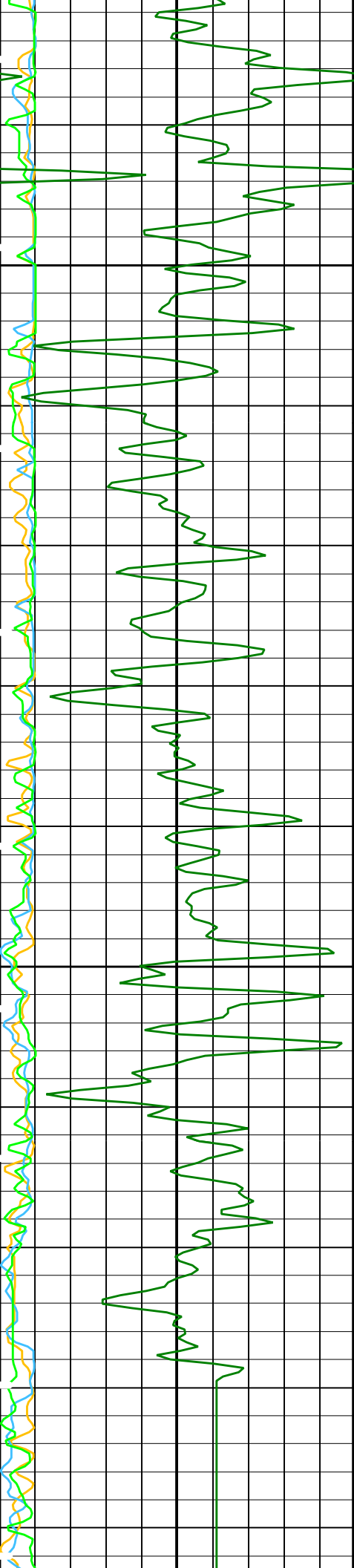
Peak Coherence / RA - Lower Dipole (CHR1)		
0	(---)	10
Gamma Ray (GR) (GAPI)		
0		10
Peak Coherence / RA - Stoneley (CHR3)		
0	(---)	10

Delta-T Stoneley (DTST)		Tension (TENS)	
440	(US/F)	40	10000 (LBF)
Delta-T Shear - Upper Dipole (DT2)		Delta-T Comp - P & S (DT4P)	
440	(US/F)	40	440 (US/F)
Delta-T Shear - Lower Dipole (DT1)		Calibrated Downhole Force (CDF)	
440	(US/F)	40	-200 (LBF)
		1800	



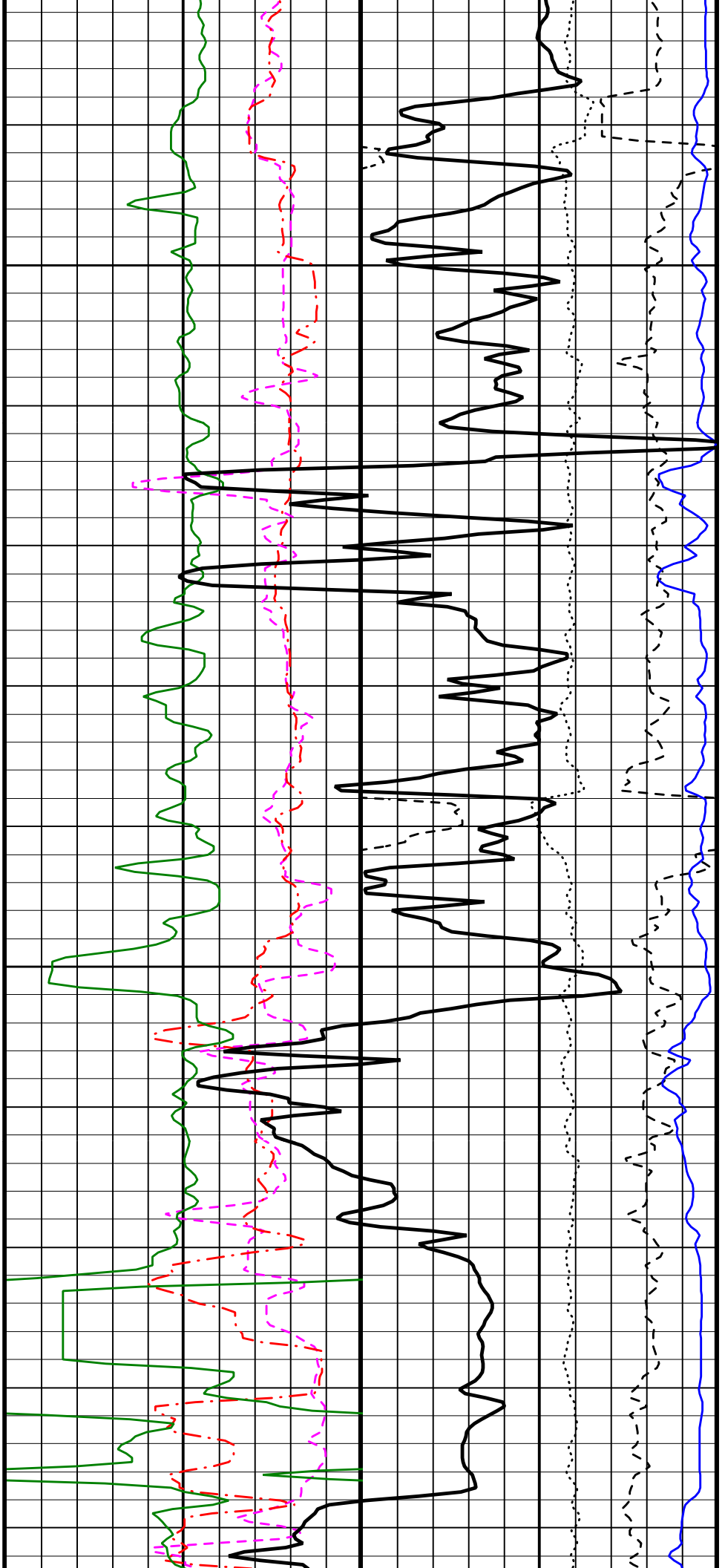
2975

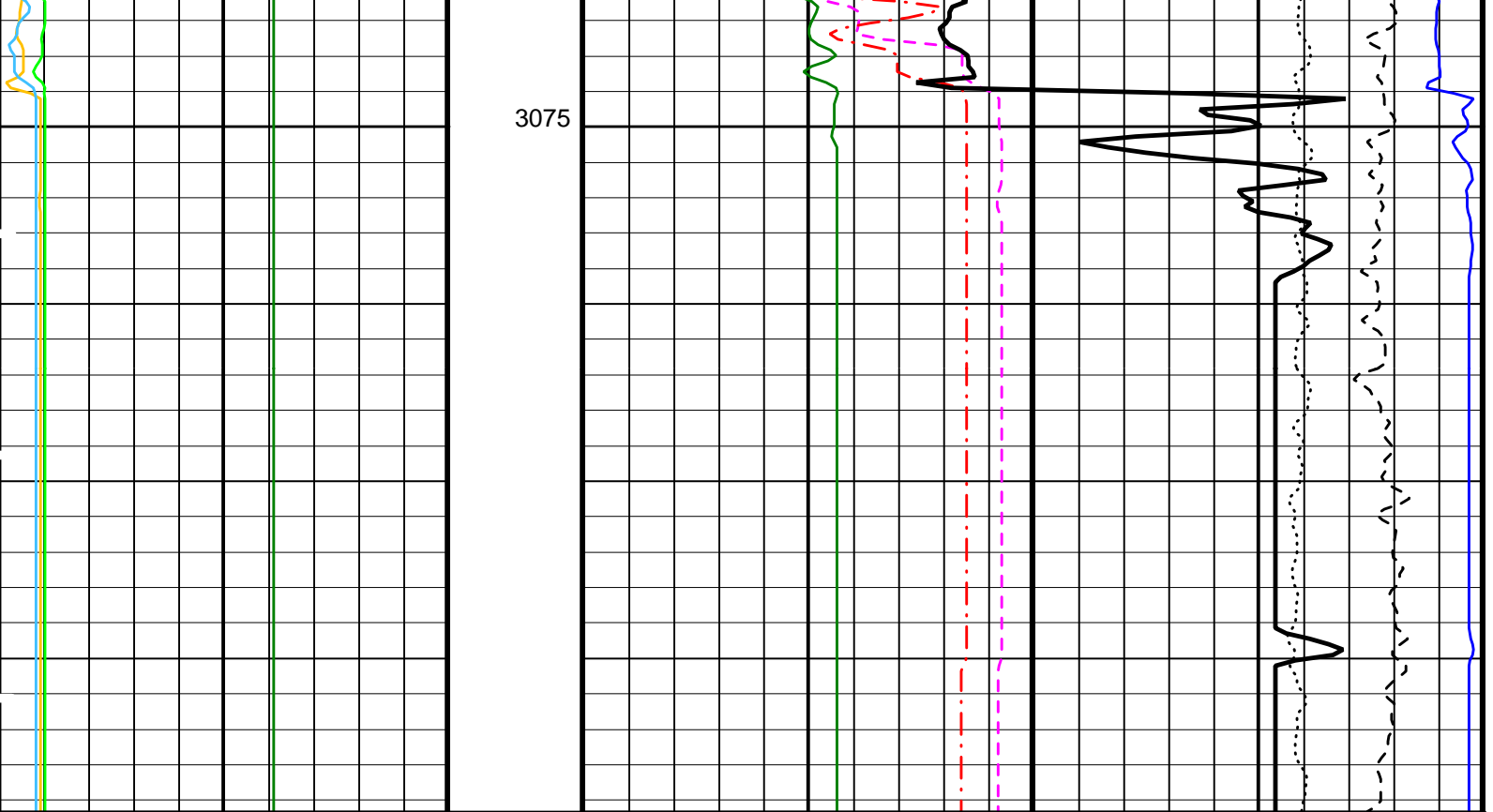
3000



3025

3050





Peak Coherence / RA - Stoneley (CHR3) 0 (---) 10	Delta-T Shear - Lower Dipole (DT1) 440 (US/F) 40	Calibrated Downhole Force (CDF) -200 (LBF) 1800
Gamma Ray (GR) 0 (GAPI) 10	Delta-T Shear - Upper Dipole (DT2) 440 (US/F) 40	Delta-T Comp - P & S (DT4P) 440 (US/F) 40
Peak Coherence / RA - Lower Dipole (CHR1) 0 (---) 10	Delta-T Stoneley (DTST) 440 (US/F) 40	Tension (TENS) 10000 (LBF) 0
Peak Coherence / RA - Upper Dipole (CHR2) 0 (---) 10	Sonic Porosity (SPHI) 0.45 (V/V) -0.15	

PIP SUMMARY

▶ Time Mark Every 60 S

Parameters

DLIS Name	Description	Value	
DSST-B: Dipole Shear Imager - B			
CDTS	C-Delta-T Shale	100	US/F
DLCS	Label Compressional Source - Dipole Shear	USE	
DSHL	Label Slowness Lower Limit - Dipole Shear	60	US/F
DSHU	Label Slowness Upper Limit - Dipole Shear	360	US/F
DTCS	Compressional Delta-T Source for DTCS Channel	PS_COMP	
DTF	Delta-T Fluid	189	US/F
DTM	Delta-T Matrix	56	US/F
LTXG	Lower Dipole Transmitter Geometry	156	IN
MTXG	Monopole Transmitter Geometry	186	IN
NWI1	Number Waveform Items 1	0	
NWI2	Number Waveform Items 2	0	
NWI3	Number Waveform Items 3	8	
NWIX	Number Waveform Items X	32	
RX1G	Receiver 1 Geometry	294	IN
RX2G	Receiver 2 Geometry	300	IN
RX3G	Receiver 3 Geometry	306	IN
RX4G	Receiver 4 Geometry	312	IN
RX5G	Receiver 5 Geometry	318	IN
RX6G	Receiver 6 Geometry	324	IN
RX7G	Receiver 7 Geometry	330	IN
RX8G	Receiver 8 Geometry	336	IN
SAS1	STC Sonic Array Status - Lower Dipole	255	
SAS2	STC Sonic Array Status - Upper Dipole	255	
SAS3	STC Sonic Array Status - Monopole Stoneley	255	

SAS3	STC Sonic Array Status - Monopole Stoneley	233	
SFM1	STC Filter - Lower Dipole	B1-5K	
SFM2	STC Filter - Upper Dipole	B1-5K	
SPFS	Sonic Porosity Formula	RAYMER_HUNT	
SPSO	Sonic Porosity Source	DTCO	
SSW1	STC Source Waveform - Lower Dipole	EVEN_IN_SAMX	
SSW2	STC Source Waveform - Upper Dipole	ODD_IN_SAMX	
SSW3	STC Source Waveform - Monopole Stoneley	WF_SAM3	
STLL	Label Slowness Lower Limit - Monopole Stoneley	180	US/F
STUL	Label Slowness Upper Limit - Monopole Stoneley	780	US/F
TWI1	STC Integration Time Window - Lower Dipole	1600	US
TWI2	STC Integration Time Window - Upper Dipole	1600	US
TWI3	STC Integration Time Window - Monopole Stoneley	1600	US
UTXG	Upper Dipole Transmitter Geometry	162	IN

Format: DSI_Field_Print Vertical Scale: 1:200 Graphics File Created: 01-Aug-2004 22:59

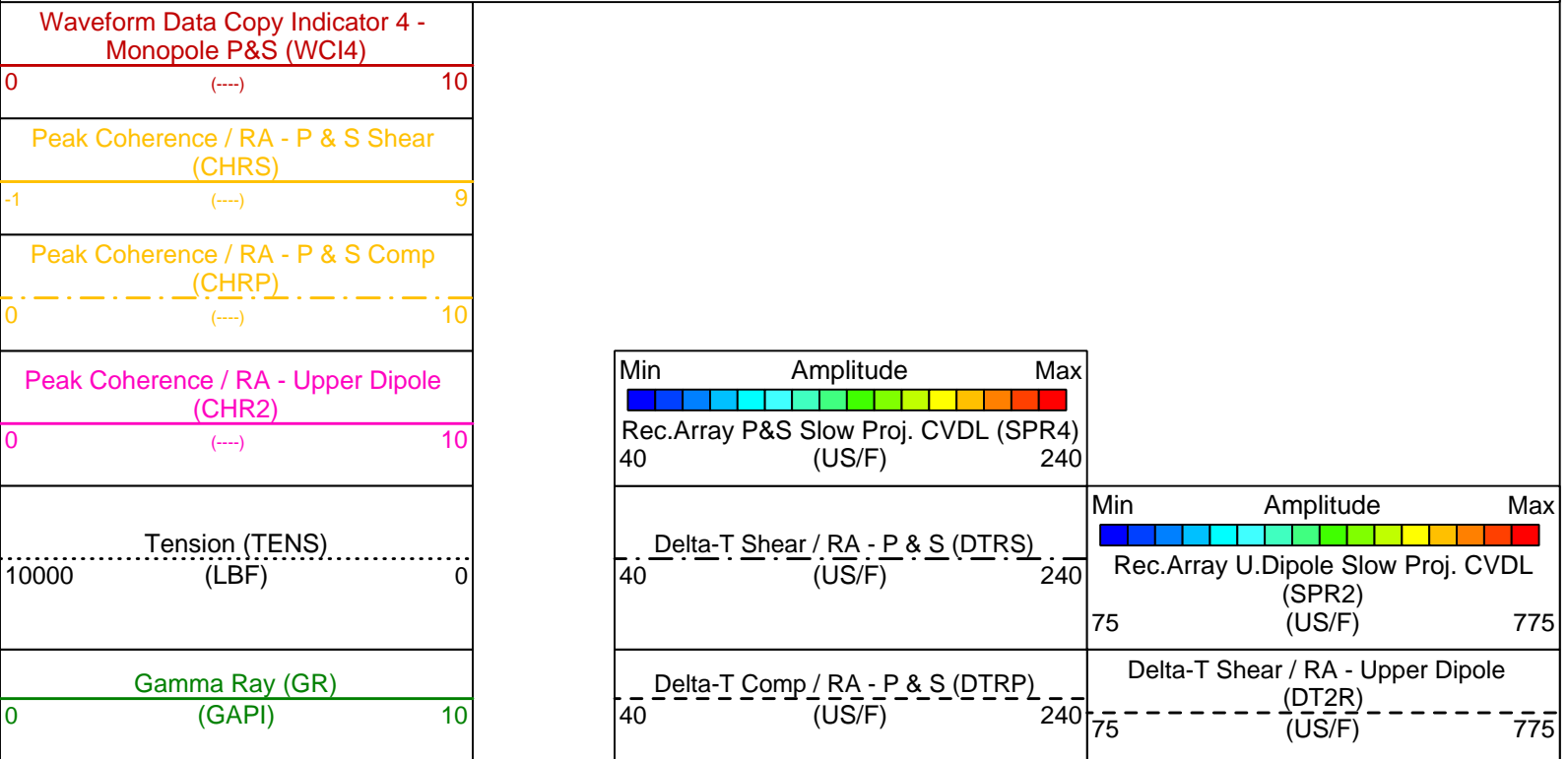
OP System Version: 12C0-301			
MCM			
MEST-B	12C0-301	DTA-A	12C0-301
DSST-B	12C0-301	SGT-N	12C0-301
DTC-H	12C0-301	BSP	12C0-301

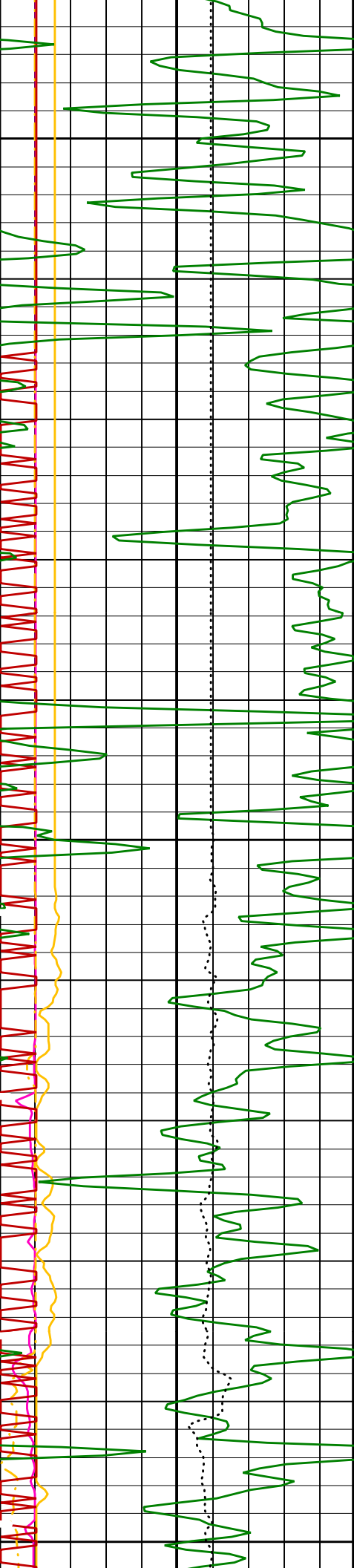
Output DLIS Files			
DEFAULT	FMS_DSI_041LUP	FN:50	PRODUCER 01-Aug-2004 22:59
REDUCED	FMS_DSI_041LUP	FN:51	PRODUCER 01-Aug-2004 22:59

Output DLIS Files					
DEFAULT	FMS_DSI_041LUP	FN:50	PRODUCER	01-Aug-2004 22:59	3094.3 M
REDUCED	FMS_DSI_041LUP	FN:51	PRODUCER	01-Aug-2004 22:59	2968.3 M

OP System Version: 12C0-301					
MCM					
MEST-B	12C0-301	DTA-A	12C0-301		
DSST-B	12C0-301	SGT-N	12C0-301		
DTC-H	12C0-301	BSP	12C0-301		

PIP SUMMARY

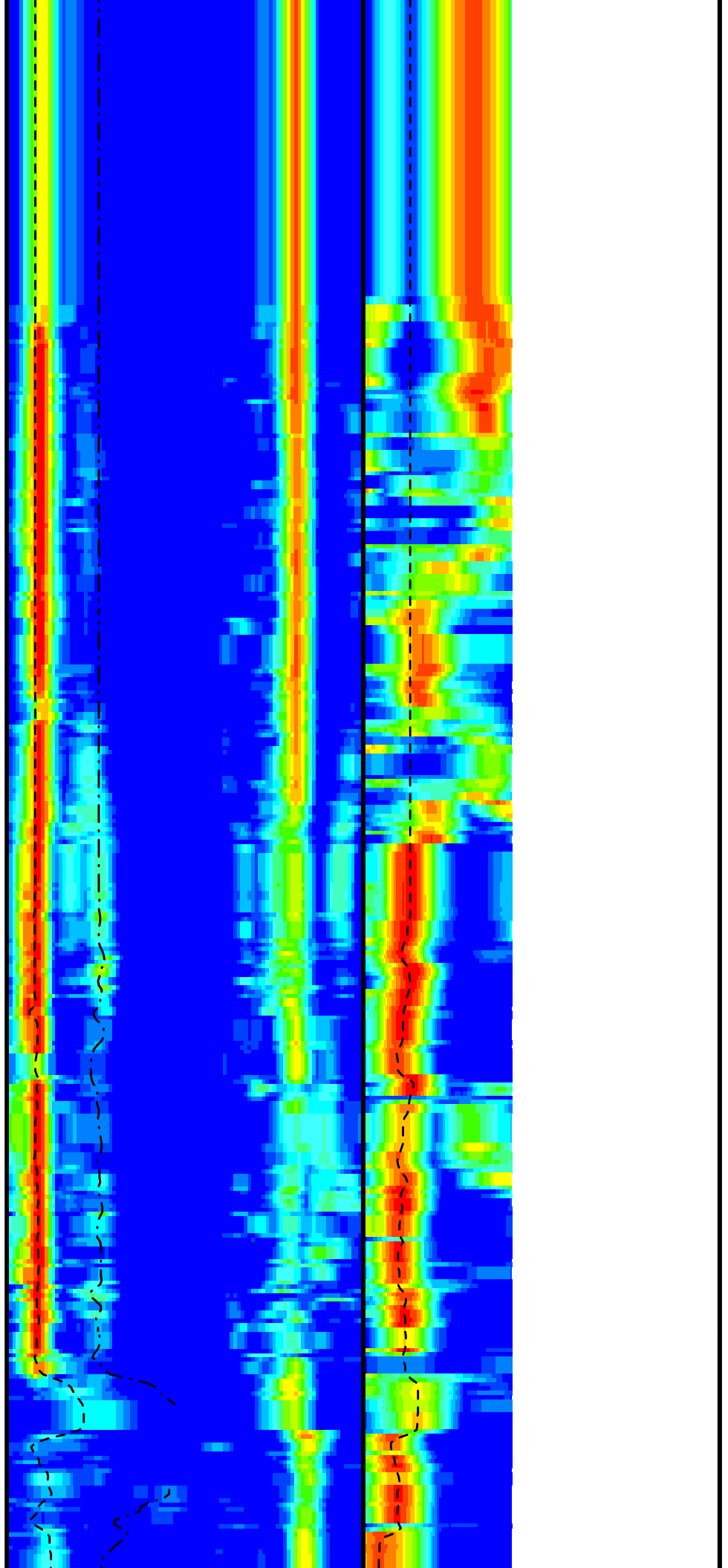


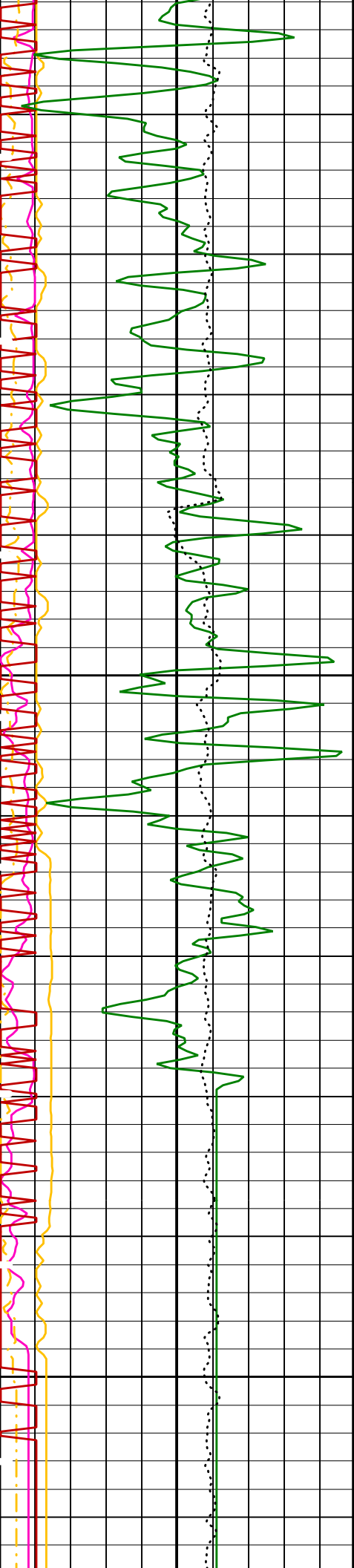


2975

3000

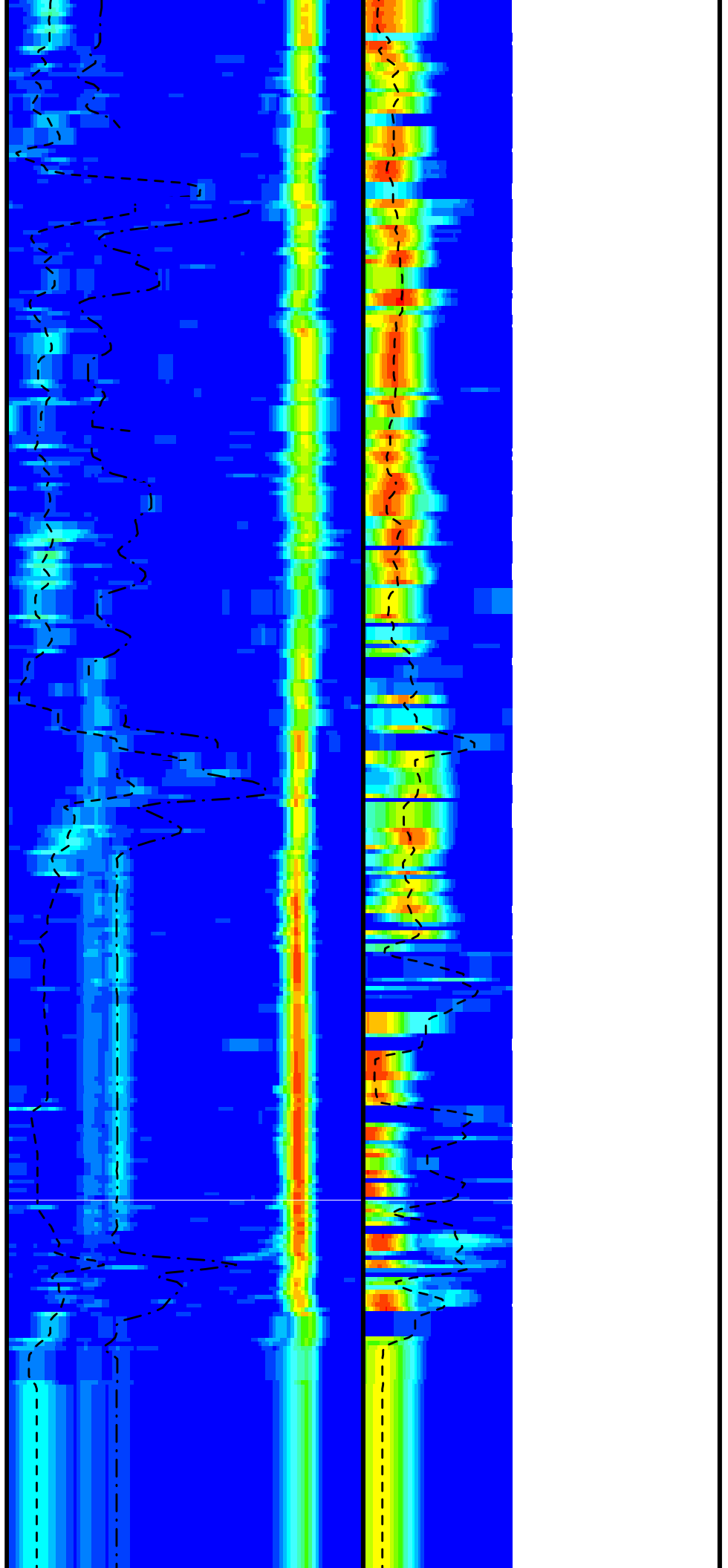
3025

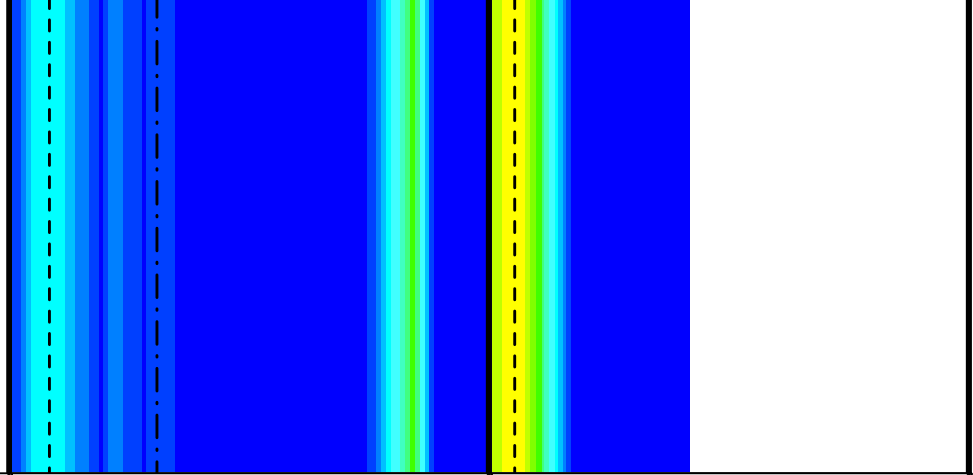
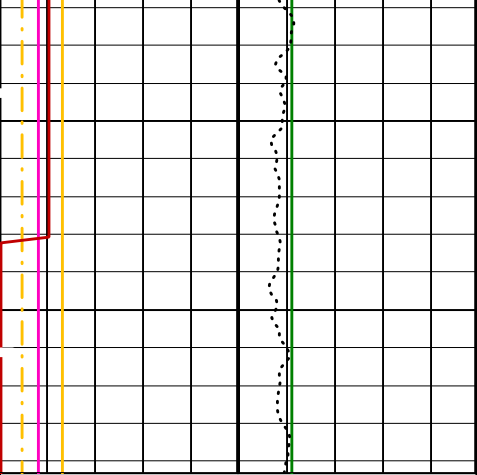




3050

3075





Gamma Ray (GR) (GAPI)	0	10
Tension (TENS) (LBF)	10000	0
Peak Coherence / RA - Upper Dipole (CHR2)	0	10
Peak Coherence / RA - P & S Comp (CHRP)	0	10
Peak Coherence / RA - P & S Shear (CHRS)	-1	9
Waveform Data Copy Indicator 4 - Monopole P&S (WCI4)	0	10

Delta-T Comp / RA - P & S (DTRP) (US/F)	40	240
Delta-T Shear / RA - Upper Dipole (DT2R) (US/F)	75	775
Delta-T Shear / RA - P & S (DTRS) (US/F)	40	240
Rec.Array U.Dipole Slow Proj. CVDL (SPR2) (US/F)	75	775
Rec.Array P&S Slow Proj. CVDL (SPR4) (US/F)	40	240

PIP SUMMARY

▶ Time Mark Every 60 S

Parameters

DLIS Name	Description	Value
DSST-B: Dipole Shear Imager - B		
BHS	Borehole Status	OPEN
CASF	Label Casing Function - Monopole P&S	50
COLL	Label Slowness Lower Limit - Monopole P&S Compressional	40 US/F
COUL	Label Slowness Upper Limit - Monopole P&S Compressional	186 US/F
DDE2	Digitizing Delay 2	0 US
DDE4	Digitizing Delay 4	0 US
DDEX	Digitizing Delay X	0 US
DLCS	Label Compressional Source - Dipole Shear	USE
DSHL	Label Slowness Lower Limit - Dipole Shear	60 US/F
DSHU	Label Slowness Upper Limit - Dipole Shear	360 US/F
DSI2	Digitizer Sample Interval 2	40 US
DSI4	Digitizer Sample Interval 4	10 US
DSIX	Digitizer Sample Interval X	40 US
DTCS	Compressional Delta-T Source for DTCO Channel	PS_COMP
DTF	Delta-T Fluid	189 US/F
DWC2	Digitizer Word Count 2	512
DWC4	Digitizer Word Count 4	512
DWCX	Digitizer Word Count X	512
FILG	Label Fill Gap Control - Monopole P&S	COMP_SHEAR
LFC	Label Formation Character - Monopole P&S	DYNAMIC
MCS	Mean Casing Slowness	57 US/F
MTXG	Monopole Transmitter Geometry	186 IN
NWI2	Number Waveform Items 2	0
NWI4	Number Waveform Items 4	8
NWIX	Number Waveform Items X	32

RSMN	Label Shear/Compressional Minimum Ratio - Monopole P&S	1.4	
RSMX	Label Shear/Compressional Maximum Ratio - Monopole P&S	2.12	
RX1G	Receiver 1 Geometry	294	IN
RX2G	Receiver 2 Geometry	300	IN
RX3G	Receiver 3 Geometry	306	IN
RX4G	Receiver 4 Geometry	312	IN
RX5G	Receiver 5 Geometry	318	IN
RX6G	Receiver 6 Geometry	324	IN
RX7G	Receiver 7 Geometry	330	IN
RX8G	Receiver 8 Geometry	336	IN
SAM2	DSST Sonic Acquisition Mode 2 - Upper Dipole Mode	OFF	
SAM4	DSST Sonic Acquisition Mode 4 - High Frequency Monopole Mode for P&S	OFF	
SAMX	DSST Sonic Acquisition Mode X - Both Dipoles or Monopole Mode for P&S	Expert	
SAS2	STC Sonic Array Status - Upper Dipole	255	
SAS4	STC Sonic Array Status - Monopole P&S	255	
SBO2	STC Search Band Offset - Upper Dipole	3000	US
SBO4	STC Search Band Offset - Monopole P&S	500	US
SBR4	STC Baseline Removal - Monopole P&S	ON	
SBW2	STC Search Bandwidth - Upper Dipole	8000	US
SBW4	STC Search Bandwidth - Monopole P&S	2000	US
SFC2	STC Formation Character - Upper Dipole	SELECTABLE	
SFC4	STC Formation Character - Monopole P&S	SELECTABLE	
SFM2	STC Filter - Upper Dipole	B1-5K	
SFM4	STC Filter - Monopole P&S	B3-20K	
SHLL	Label Slowness Lower Limit - Monopole P&S Shear	75	US/F
SHUL	Label Slowness Upper Limit - Monopole P&S Shear	186	US/F
SLL2	STC Slowness Lower Limit - Upper Dipole	60	US/F
SLL4	STC Slowness Lower Limit - Monopole P&S	40	US/F
SST2	STC Slowness Step - Upper Dipole	4	US/F
SST4	STC Slowness Step - Monopole P&S	2	US/F
SSW2	STC Source Waveform - Upper Dipole	ODD_IN_SAMX	
SSW4	STC Source Waveform - Monopole P&S	WF_SAM4	
STLL	Label Slowness Lower Limit - Monopole Stoneley	180	US/F
STUL	Label Slowness Upper Limit - Monopole Stoneley	780	US/F
SUL2	STC Slowness Upper Limit - Upper Dipole	360	US/F
SUL4	STC Slowness Upper Limit - Monopole P&S	240	US/F
SWD2	STC Slowness Width - Upper Dipole	40	US/F
SWD4	STC Slowness Width - Monopole P&S	10	US/F
TBF2	STC Time for Baseline Fill - Upper Dipole	0	US
TBF4	STC Time for Baseline Fill - Monopole P&S	300	US
TLL2	STC Time Lower Limit - Upper Dipole	600	US
TLL4	STC Time Lower Limit - Monopole P&S	150	US
TST2	STC Time Step - Upper Dipole	200	US
TST4	STC Time Step - Monopole P&S	50	US
TUL2	STC Time Upper Limit - Upper Dipole	10960	US
TUL4	STC Time Upper Limit - Monopole P&S	3660	US
TWD2	STC Time Width - Upper Dipole	2000	US
TWD4	STC Time Width - Monopole P&S	1000	US
TWI2	STC Integration Time Window - Upper Dipole	1600	US
TWI4	STC Integration Time Window - Monopole P&S	500	US
TWSX	Transmitter Waveform Select X	0	
UTXG	Upper Dipole Transmitter Geometry	162	IN
WFM4	Waveform Mode 4	W1	
BHS	SGT-N: Scintillation Gamma-Ray - N Borehole Status	OPEN	

Format: DSST_P_S_UPPER_VDL_COLOR Vertical Scale: 1:200 Graphics File Created: 01-Aug-2004 22:59

OP System Version: 12C0-301 MCM

MEST-B	12C0-301	DTA-A	12C0-301
DSST-B	12C0-301	SGT-N	12C0-301
DTC-H	12C0-301	BSP	12C0-301

Output DLIS Files

DEFAULT	FMS_DSI_041LUP	FN:50	PRODUCER	01-Aug-2004 22:59
REDUCED	FMS_DSI_041LUP	FN:51	PRODUCER	01-Aug-2004 22:59

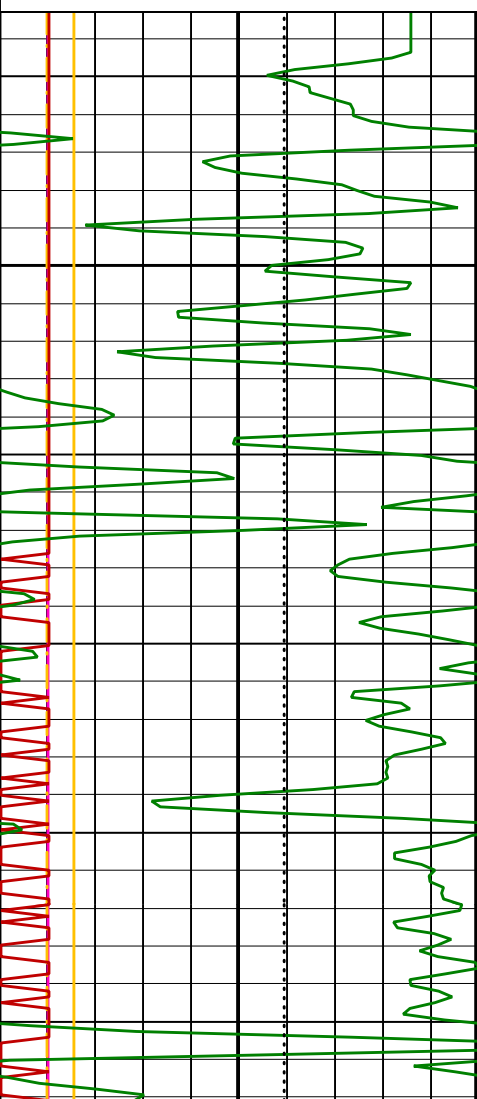
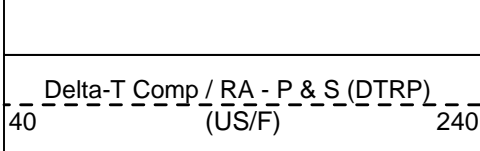
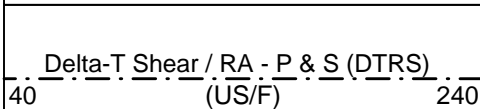
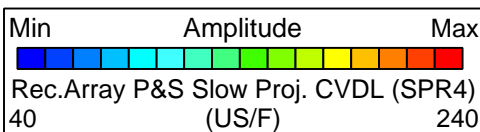
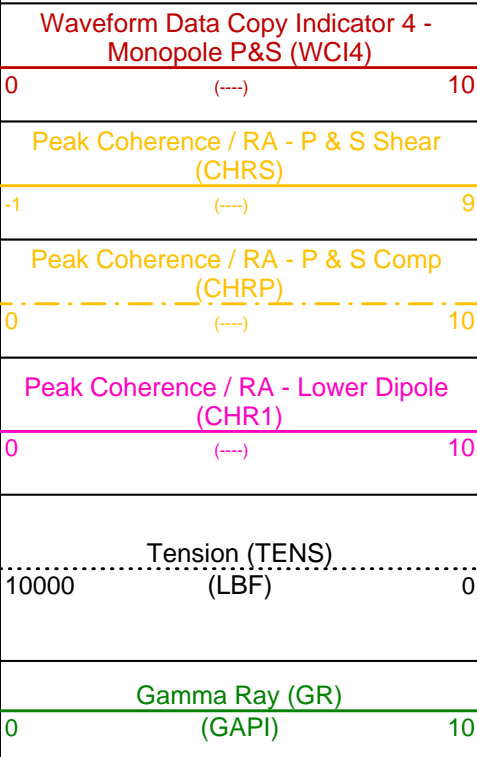
Output DLIS Files

DEFAULT	FMS_DSI_041LUP	FN:50	PRODUCER	01-Aug-2004 22:59	3094.3 M	2968.3 M
REDUCED	FMS_DSI_041LUP	FN:51	PRODUCER	01-Aug-2004 22:59	3094.3 M	2968.3 M

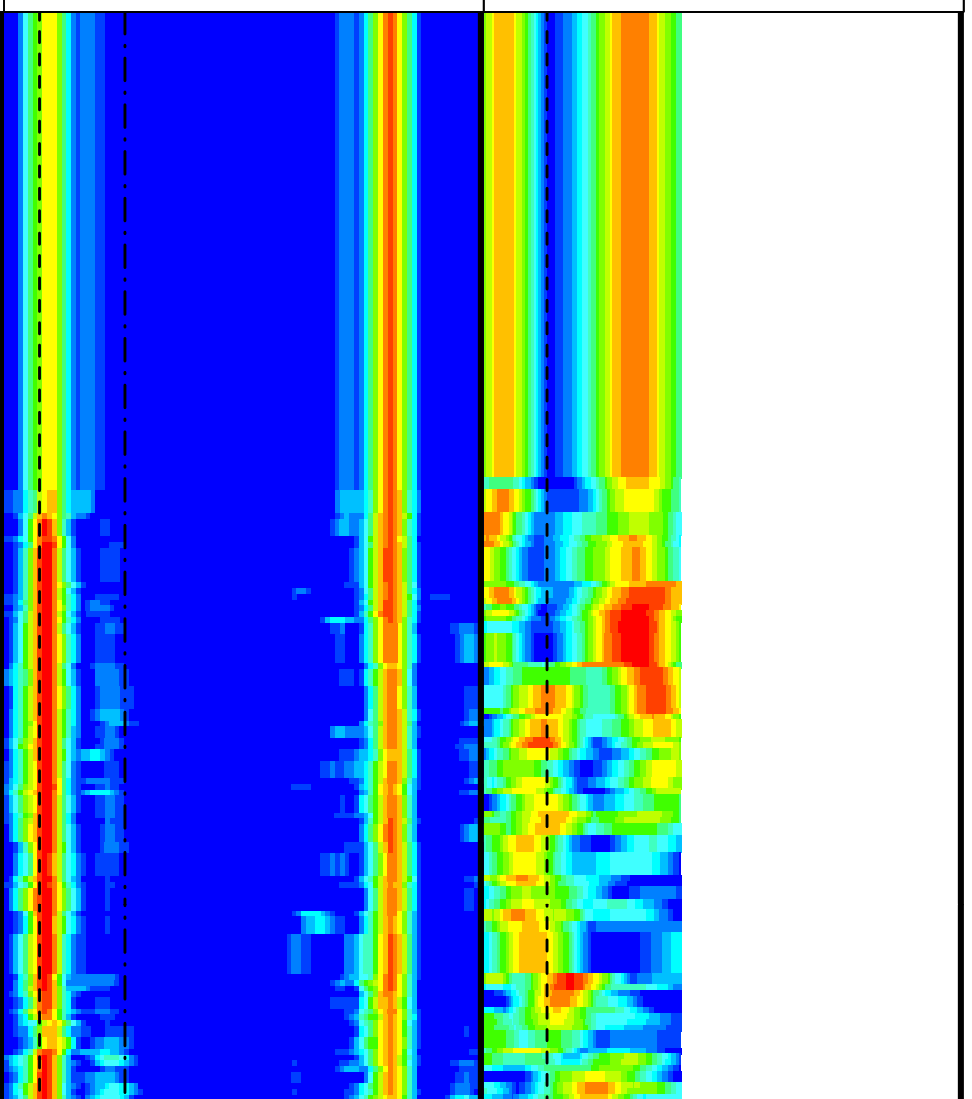
MEST-B	12C0-301	DTA-A	12C0-301
DSST-B	12C0-301	SGT-N	12C0-301
DTC-H	12C0-301	BSP	12C0-301

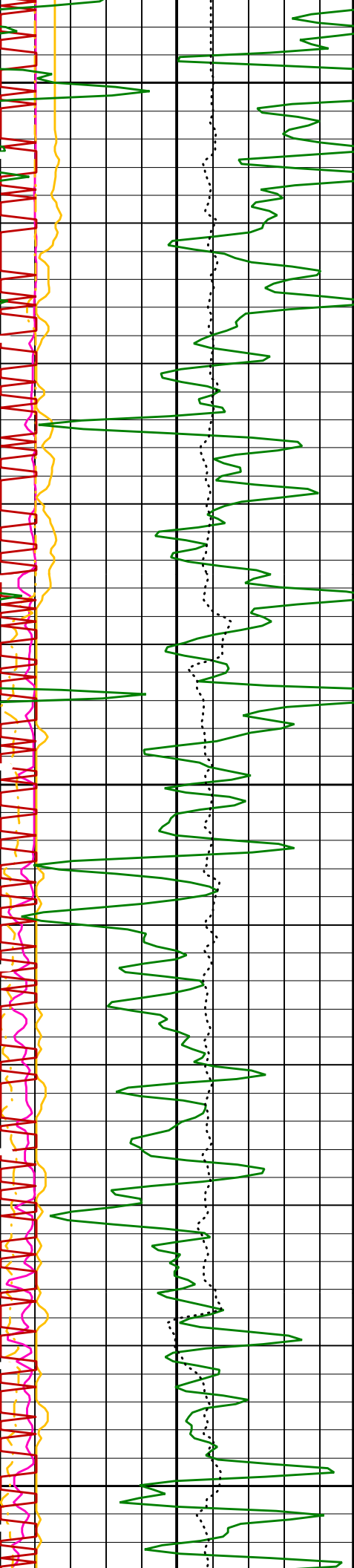
PIP SUMMARY

Time Mark Every 60 S



2975

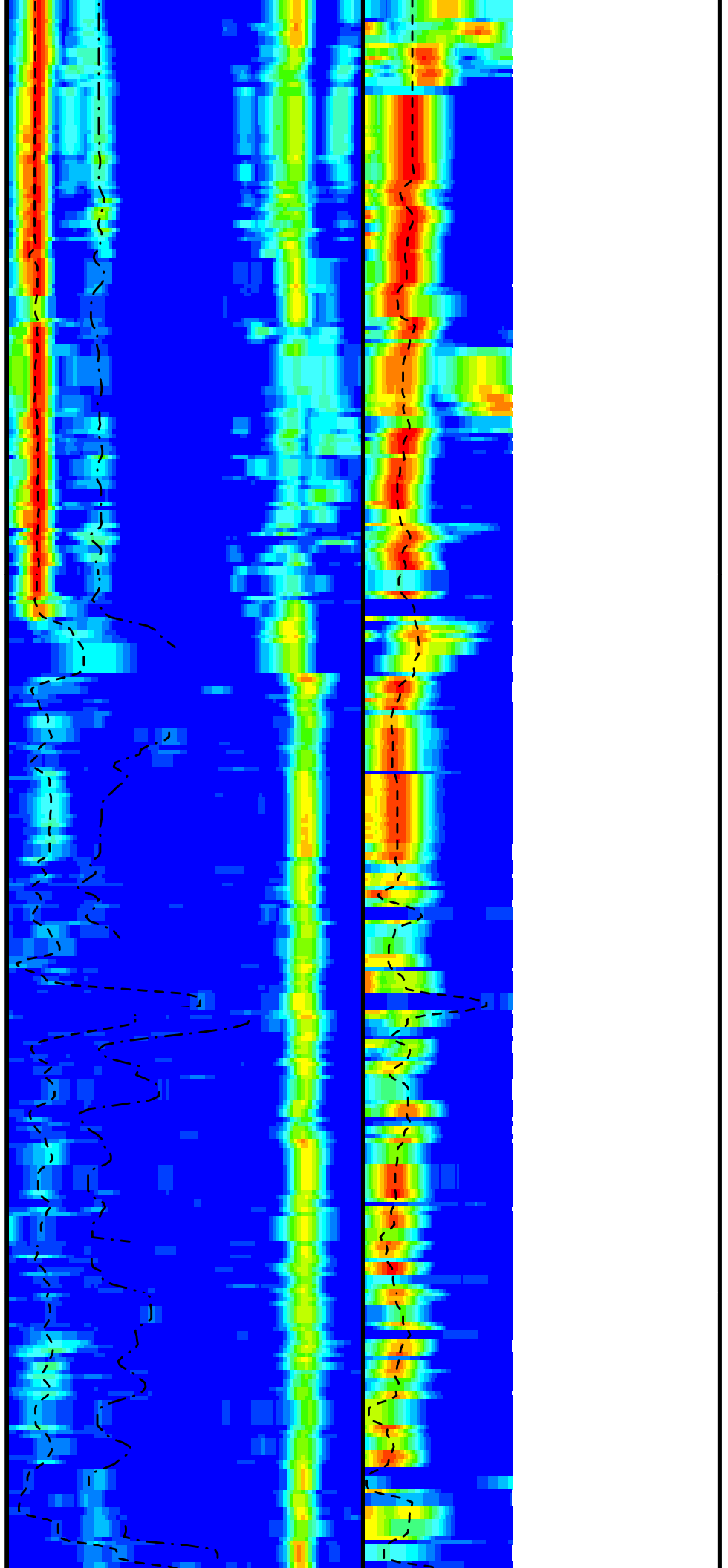


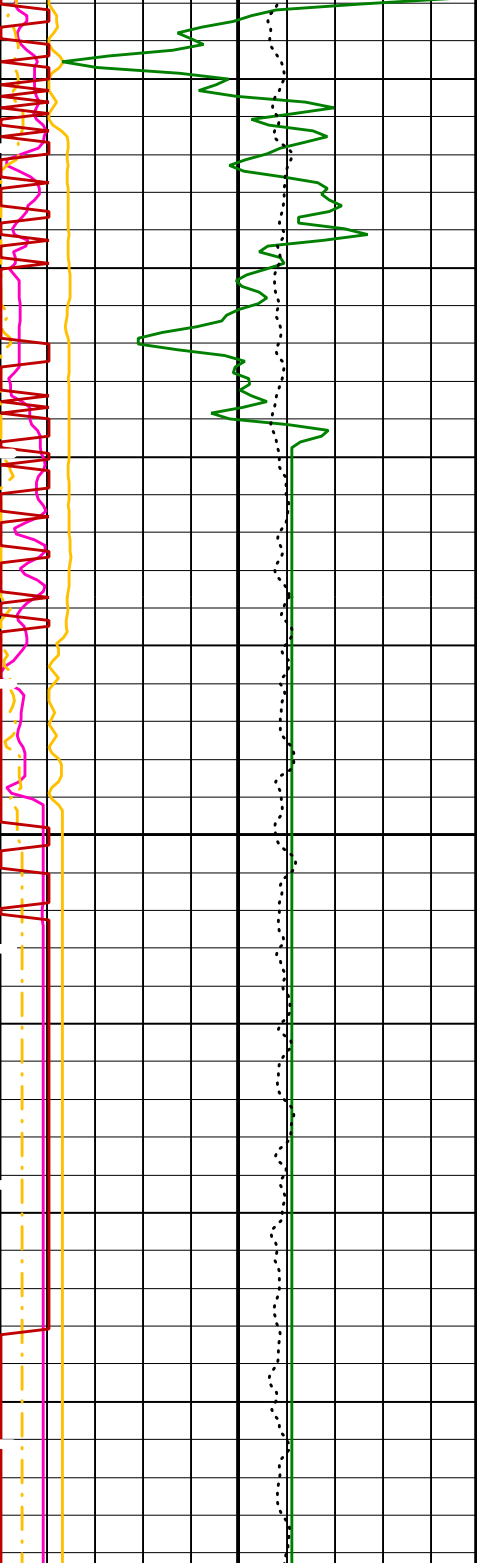


3000

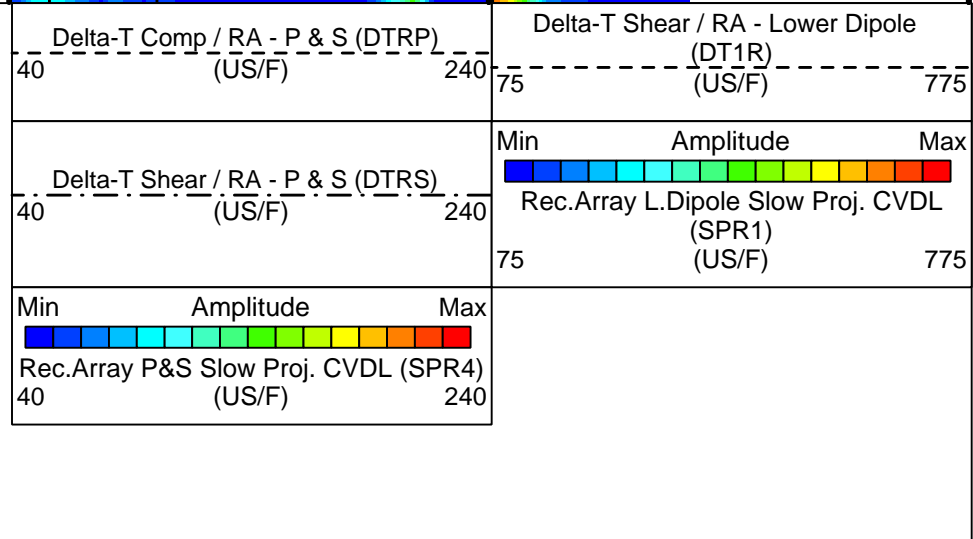
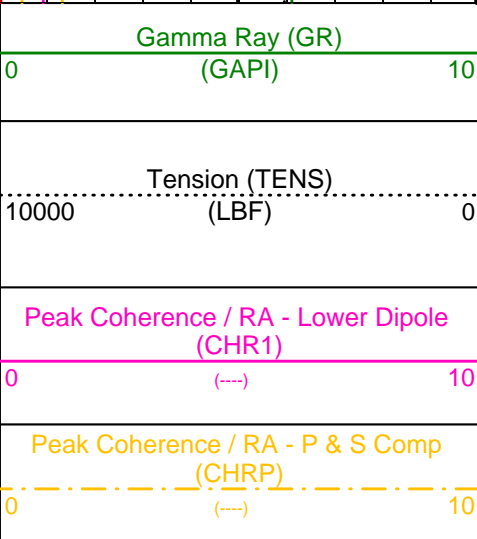
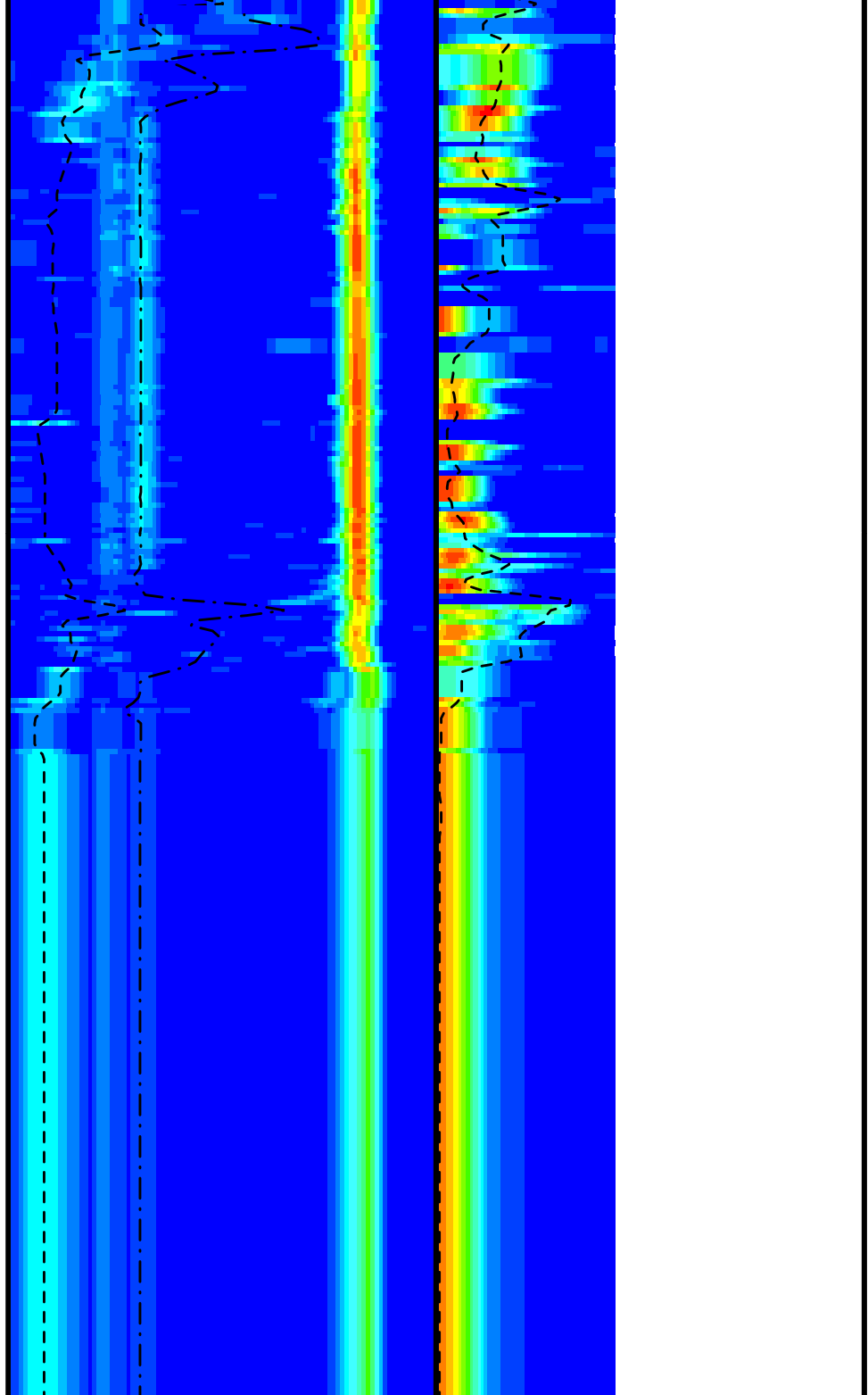
3025

3050





3075



Peak Coherence / RA - P & S Shear (CHRS)	
-1 (----) 9	
Waveform Data Copy Indicator 4 - Monopole P&S (WCI4)	
0 (----) 10	

PIP SUMMARY

Time Mark Every 60 S

Parameters

DLIS Name	Description	Value	
	DSST-B: Dipole Shear Imager - B		
BHS	Borehole Status	OPEN	
CASF	Label Casing Function - Monopole P&S	50	
COLL	Label Slowness Lower Limit - Monopole P&S Compressional	40	US/F
COUL	Label Slowness Upper Limit - Monopole P&S Compressional	186	US/F
DDE1	Digitizing Delay 1	0	US
DDE4	Digitizing Delay 4	0	US
DDEX	Digitizing Delay X	0	US
DLCS	Label Compressional Source - Dipole Shear	USE	
DSHL	Label Slowness Lower Limit - Dipole Shear	60	US/F
DSHU	Label Slowness Upper Limit - Dipole Shear	360	US/F
DSI1	Digitizer Sample Interval 1	40	US
DSI4	Digitizer Sample Interval 4	10	US
DSIX	Digitizer Sample Interval X	40	US
DTCS	Compressional Delta-T Source for DTCO Channel	PS_COMP	
DTF	Delta-T Fluid	189	US/F
DWC1	Digitizer Word Count 1	512	
DWC4	Digitizer Word Count 4	512	
DWCX	Digitizer Word Count X	512	
FILG	Label Fill Gap Control - Monopole P&S	COMP_SHEAR	
LFC	Label Formation Character - Monopole P&S	DYNAMIC	
LTXG	Lower Dipole Transmitter Geometry	156	IN
MCS	Mean Casing Slowness	57	US/F
MTXG	Monopole Transmitter Geometry	186	IN
NWI1	Number Waveform Items 1	0	
NWI4	Number Waveform Items 4	8	
NWIX	Number Waveform Items X	32	
RSMN	Label Shear/Compressional Minimum Ratio - Monopole P&S	1.4	
RSMX	Label Shear/Compressional Maximum Ratio - Monopole P&S	2.12	
RX1G	Receiver 1 Geometry	294	IN
RX2G	Receiver 2 Geometry	300	IN
RX3G	Receiver 3 Geometry	306	IN
RX4G	Receiver 4 Geometry	312	IN
RX5G	Receiver 5 Geometry	318	IN
RX6G	Receiver 6 Geometry	324	IN
RX7G	Receiver 7 Geometry	330	IN
RX8G	Receiver 8 Geometry	336	IN
SAM1	DSST Sonic Acquisition Mode 1 - Lower Dipole Mode	OFF	
SAM4	DSST Sonic Acquisition Mode 4 - High Frequency Monopole Mode for P&S	EVEN	
SAMX	DSST Sonic Acquisition Mode X - Both Dipoles or Monopole Mode for Expert	BCR	
SAS1	STC Sonic Array Status - Lower Dipole	255	
SAS4	STC Sonic Array Status - Monopole P&S	255	
SBO1	STC Search Band Offset - Lower Dipole	3000	US
SBO4	STC Search Band Offset - Monopole P&S	500	US
SBR4	STC Baseline Removal - Monopole P&S	ON	
SBW1	STC Search Bandwidth - Lower Dipole	8000	US
SBW4	STC Search Bandwidth - Monopole P&S	2000	US
SFC1	STC Formation Character - Lower Dipole	SELECTABLE	
SFC4	STC Formation Character - Monopole P&S	SELECTABLE	
SFM1	STC Filter - Lower Dipole	B1-5K	
SFM4	STC Filter - Monopole P&S	B3-20K	
SHLL	Label Slowness Lower Limit - Monopole P&S Shear	75	US/F
SHUL	Label Slowness Upper Limit - Monopole P&S Shear	186	US/F
SLL1	STC Slowness Lower Limit - Lower Dipole	60	US/F
SLL4	STC Slowness Lower Limit - Monopole P&S	40	US/F
SST1	STC Slowness Step - Lower Dipole	4	US/F
SST4	STC Slowness Step - Monopole P&S	2	US/F
SSW1	STC Source Waveform - Lower Dipole	EVEN_IN_SAMX	
SSW4	STC Source Waveform - Monopole P&S	WF_SAM4	
STLL	Label Slowness Lower Limit - Monopole Stoneley	180	US/F
STUL	Label Slowness Upper Limit - Monopole Stoneley	780	US/F
SUL1	STC Slowness Upper Limit - Lower Dipole	360	US/F
SUL4	STC Slowness Upper Limit - Monopole P&S	240	US/F
SWD1	STC Slowness Width - Lower Dipole	40	US/F
SWD4	STC Slowness Width - Monopole P&S	10	US/F

TBF1	STC Time for Baseline Fill - Lower Dipole	0	US
TBF4	STC Time for Baseline Fill - Monopole P&S	300	US
TLL1	STC Time Lower Limit - Lower Dipole	600	US
TLL4	STC Time Lower Limit - Monopole P&S	150	US
TST1	STC Time Step - Lower Dipole	200	US
TST4	STC Time Step - Monopole P&S	50	US
TUL1	STC Time Upper Limit - Lower Dipole	11140	US
TUL4	STC Time Upper Limit - Monopole P&S	3660	US
TWD1	STC Time Width - Lower Dipole	2000	US
TWD4	STC Time Width - Monopole P&S	1000	US
TWI1	STC Integration Time Window - Lower Dipole	1600	US
TWI4	STC Integration Time Window - Monopole P&S	500	US
TWSX	Transmitter Waveform Select X	0	
WFM4	Waveform Mode 4	W1	
BHS	SGT-N: Scintillation Gamma-Ray - N Borehole Status		OPEN

Format: DSST_P_S_LOWER_VDL_COLOR Vertical Scale: 1:200 Graphics File Created: 01-Aug-2004 22:59

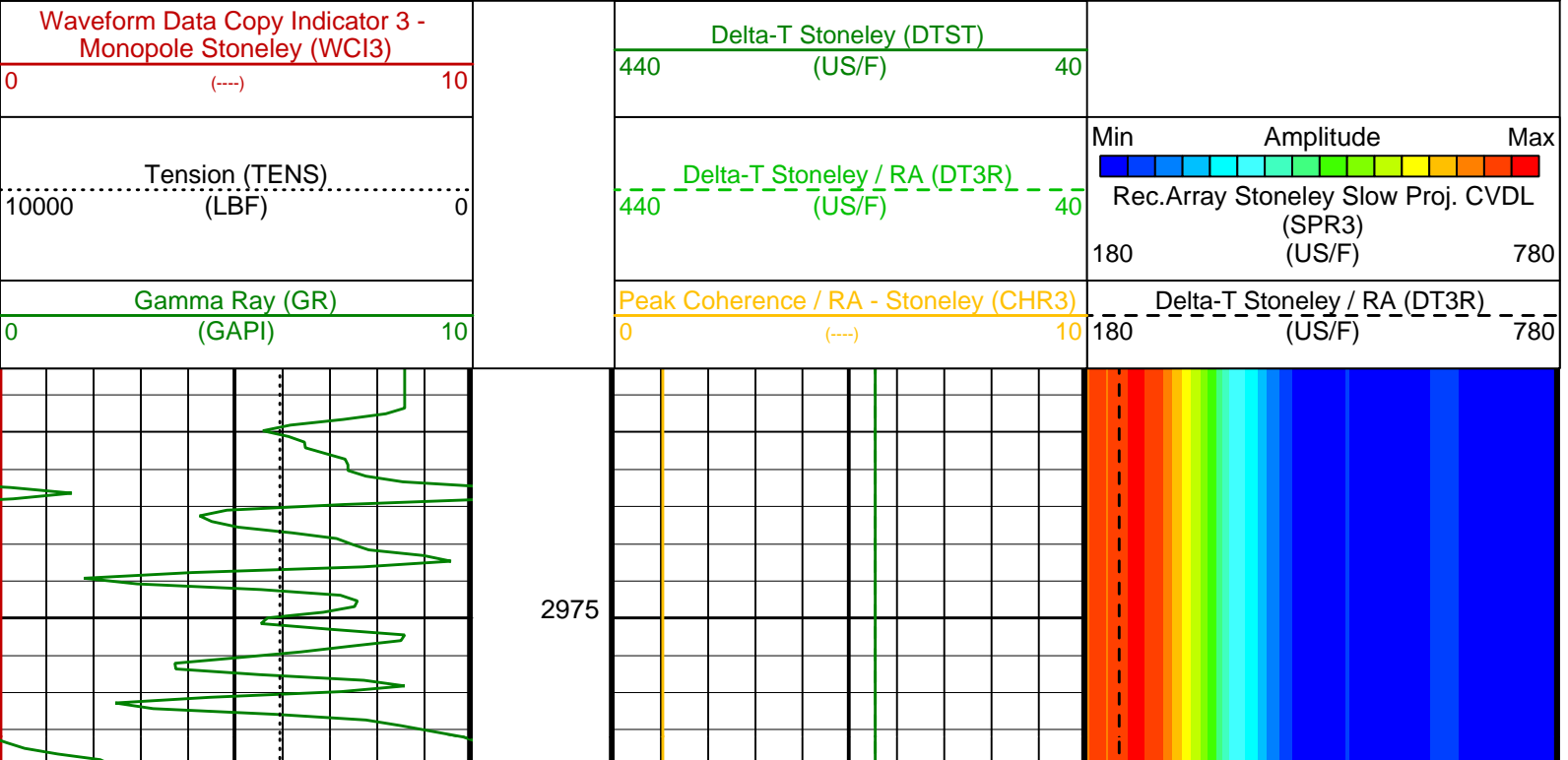
OP System Version: 12C0-301			
MCM			
MEST-B	12C0-301	DTA-A	12C0-301
DSST-B	12C0-301	SGT-N	12C0-301
DTC-H	12C0-301	BSP	12C0-301

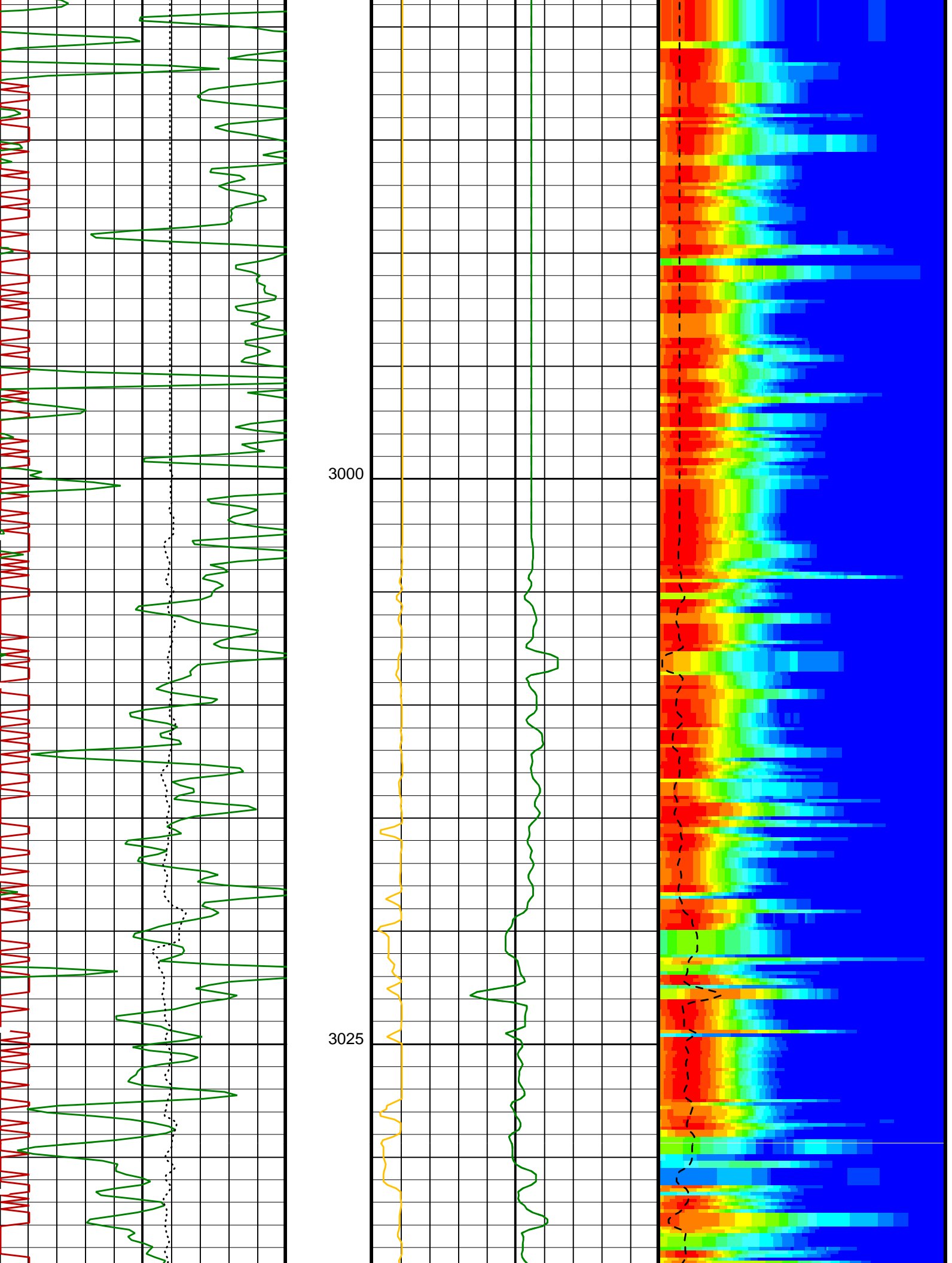
Output DLIS Files					
DEFAULT	FMS_DSI_041LUP	FN:50	PRODUCER	01-Aug-2004 22:59	
REDUCED	FMS_DSI_041LUP	FN:51	PRODUCER	01-Aug-2004 22:59	

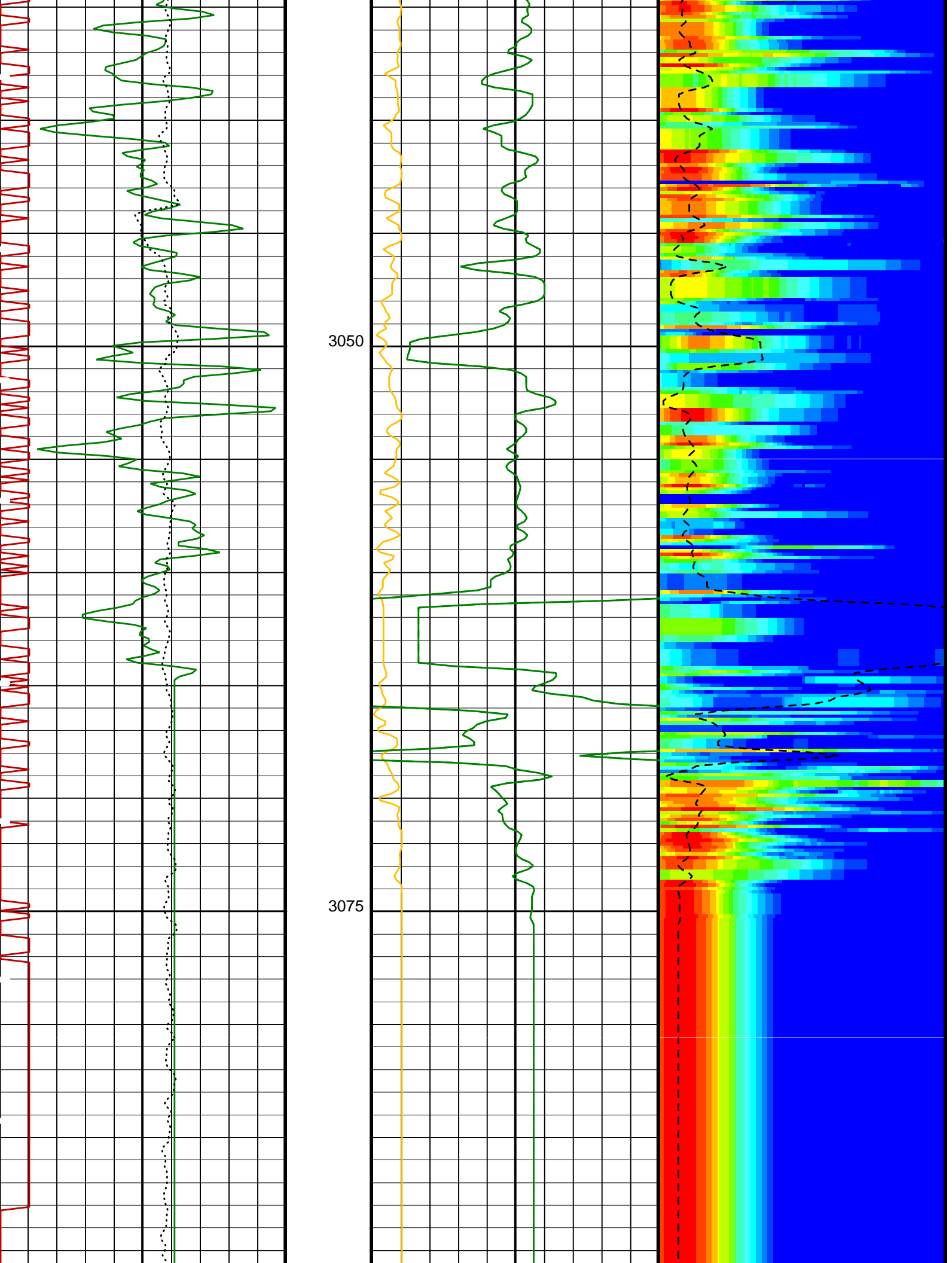
Output DLIS Files						
DEFAULT	FMS_DSI_041LUP	FN:50	PRODUCER	01-Aug-2004 22:59	3094.3 M	2968.3 M
REDUCED	FMS_DSI_041LUP	FN:51	PRODUCER	01-Aug-2004 22:59	3094.3 M	2968.3 M

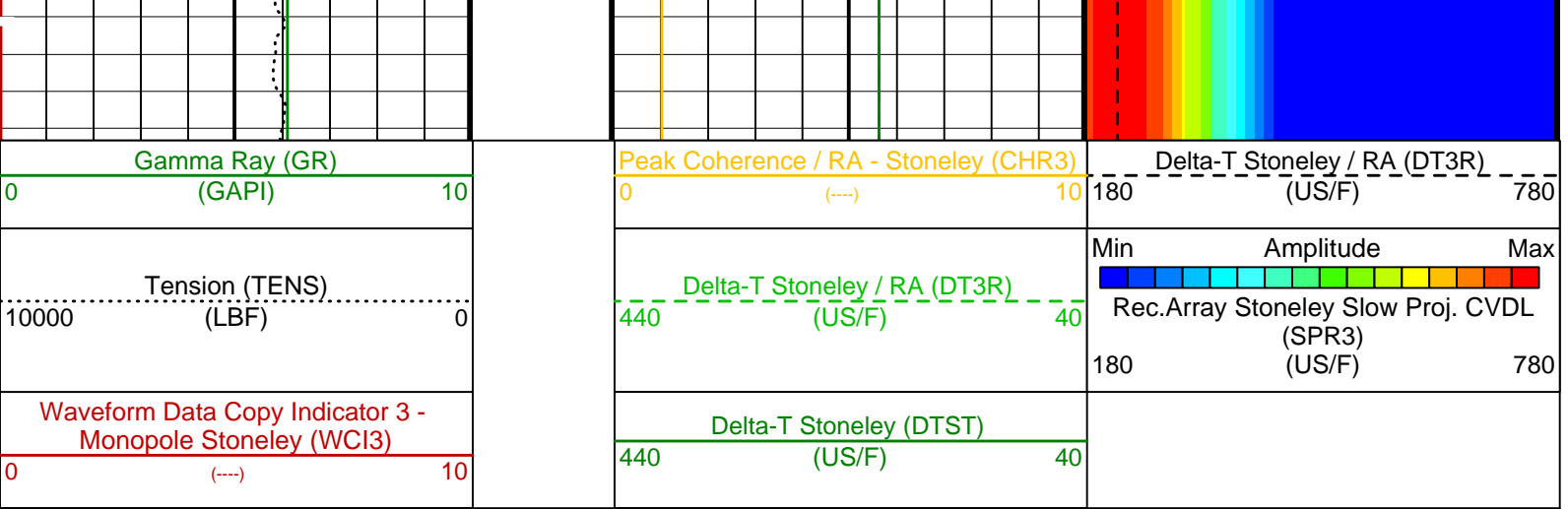
OP System Version: 12C0-301			
MCM			
MEST-B	12C0-301	DTA-A	12C0-301
DSST-B	12C0-301	SGT-N	12C0-301
DTC-H	12C0-301	BSP	12C0-301

PIP SUMMARY









PIP SUMMARY

Time Mark Every 60 S

Parameters

DLIS Name	Description	Value
DSST-B: Dipole Shear Imager - B		
DDE3	Digitizing Delay 3	0 US
DDEX	Digitizing Delay X	0 US
DSI3	Digitizer Sample Interval 3	40 US
DSIX	Digitizer Sample Interval X	40 US
DTCS	Compressional Delta-T Source for DTCO Channel	PS_COMP
DWC3	Digitizer Word Count 3	512
DWCX	Digitizer Word Count X	512
MTXG	Monopole Transmitter Geometry	186 IN
NWI3	Number Waveform Items 3	8
NWIX	Number Waveform Items X	32
RX1G	Receiver 1 Geometry	294 IN
RX2G	Receiver 2 Geometry	300 IN
RX3G	Receiver 3 Geometry	306 IN
RX4G	Receiver 4 Geometry	312 IN
RX5G	Receiver 5 Geometry	318 IN
RX6G	Receiver 6 Geometry	324 IN
RX7G	Receiver 7 Geometry	330 IN
RX8G	Receiver 8 Geometry	336 IN
SAM3	DSST Sonic Acquisition Mode 3 - Low Frequency Monopole Mode for Stoneley	EVEN
SAMX	DSST Sonic Acquisition Mode X - Both Dipoles or Monopole Mode for Expert	BCR
SAS3	STC Sonic Array Status - Monopole Stoneley	255
SBO3	STC Search Band Offset - Monopole Stoneley	2000 US
SBW3	STC Search Bandwidth - Monopole Stoneley	6000 US
SFC3	STC Formation Character - Monopole Stoneley	SELECTABLE
SFM3	STC Filter - Monopole Stoneley	B.5-1.5K
SLL3	STC Slowness Lower Limit - Monopole Stoneley	180 US/F
SST3	STC Slowness Step - Monopole Stoneley	4 US/F
SSW3	STC Source Waveform - Monopole Stoneley	WF_SAM3
STLL	Label Slowness Lower Limit - Monopole Stoneley	180 US/F
STUL	Label Slowness Upper Limit - Monopole Stoneley	780 US/F
SUL3	STC Slowness Upper Limit - Monopole Stoneley	780 US/F
SWD3	STC Slowness Width - Monopole Stoneley	40 US/F
TBF3	STC Time for Baseline Fill - Monopole Stoneley	0 US
TLL3	STC Time Lower Limit - Monopole Stoneley	620 US
TST3	STC Time Step - Monopole Stoneley	200 US
TUL3	STC Time Upper Limit - Monopole Stoneley	12020 US
TWD3	STC Time Width - Monopole Stoneley	2000 US
TWI3	STC Integration Time Window - Monopole Stoneley	1600 US
TWSX	Transmitter Waveform Select X	0
WFM3	Waveform Mode 3	W1

Format: DSST_STONELEY_VDL_COLOR Vertical Scale: 1:200 Graphics File Created: 01-Aug-2004 22:59

OP System Version: 12C0-301
MCM

MEST-B	12C0-301	DTA-A	12C0-301
DSST-B	12C0-301	SGT-N	12C0-301
DTC-H	12C0-301	BSP	12C0-301

Output DLIS Files

DEFAULT	FMS_DSI_041LUP	FN:50	PRODUCER	01-Aug-2004 22:59
REDUCED	FMS_DSI_041LUP	FN:51	PRODUCER	01-Aug-2004 22:59



Repeat Pass

MAXIS Field Log

Output DLIS Files

DEFAULT	FMS_DSI_042LUP	FN:52	PRODUCER	01-Aug-2004 23:29	3094.3 M	2978.7 M
REDUCED	FMS_DSI_042LUP	FN:53	PRODUCER	01-Aug-2004 23:29	3094.3 M	2978.7 M

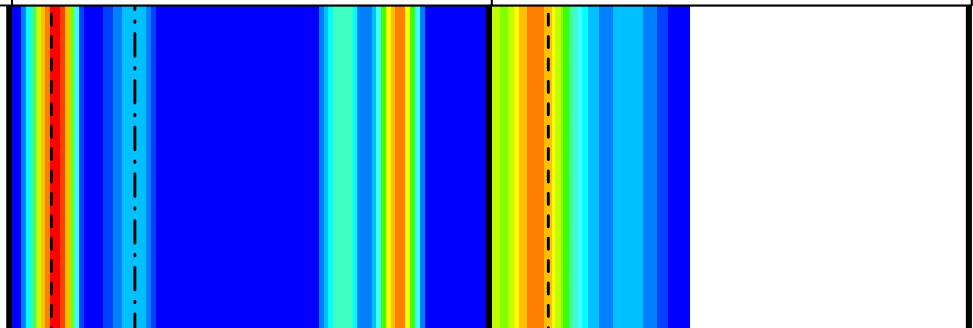
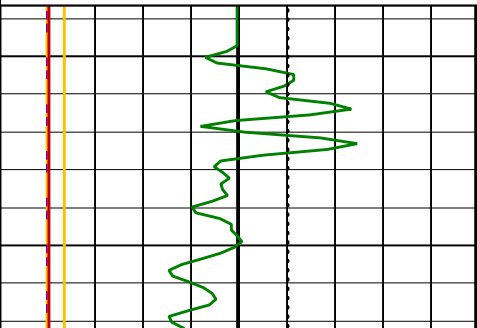
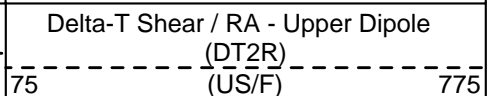
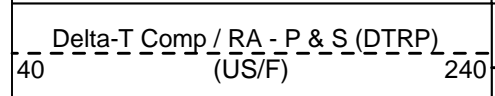
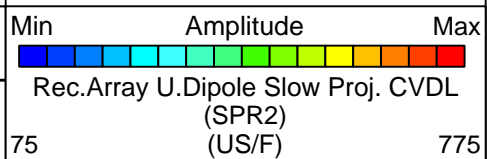
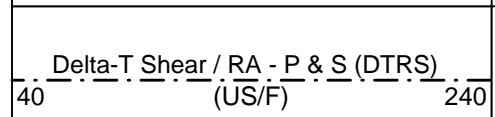
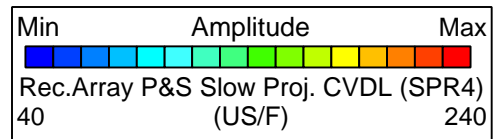
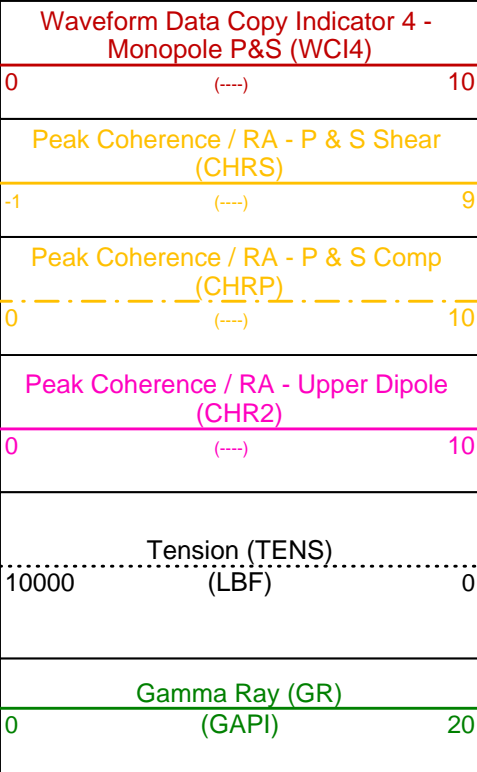
OP System Version: 12C0-301

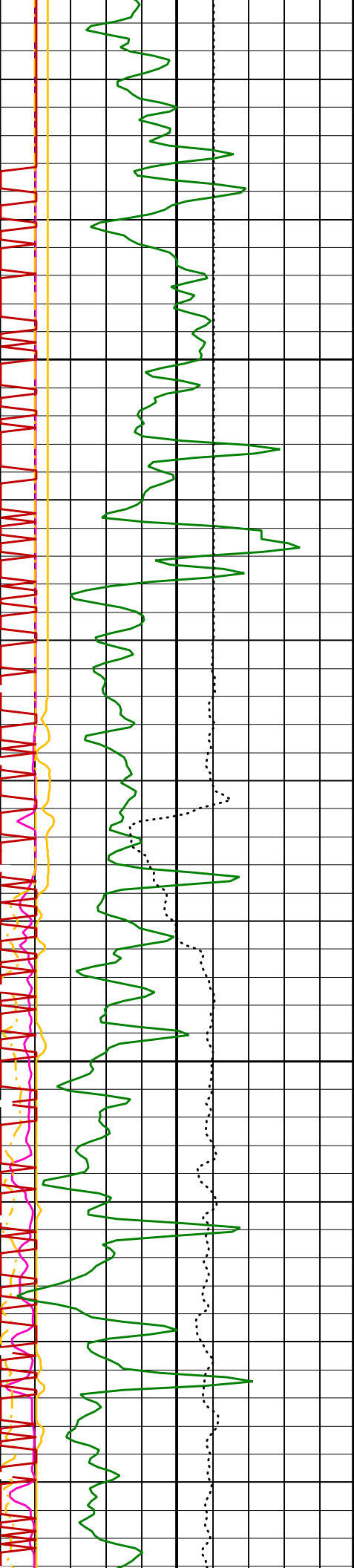
MCM

MEST-B	12C0-301	DTA-A	12C0-301
DSST-B	12C0-301	SGT-N	12C0-301
DTC-H	12C0-301	BSP	12C0-301

PIP SUMMARY

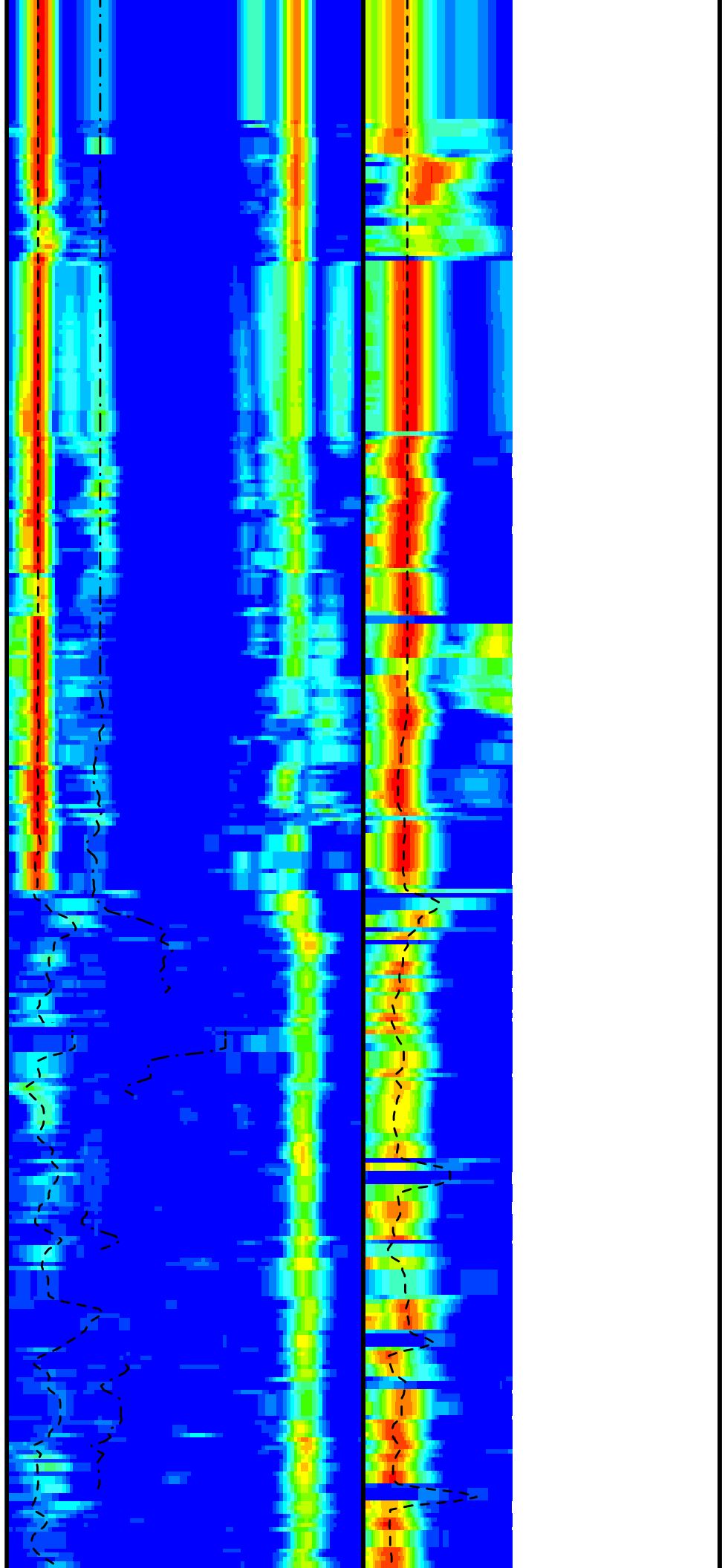
Time Mark Every 60 S

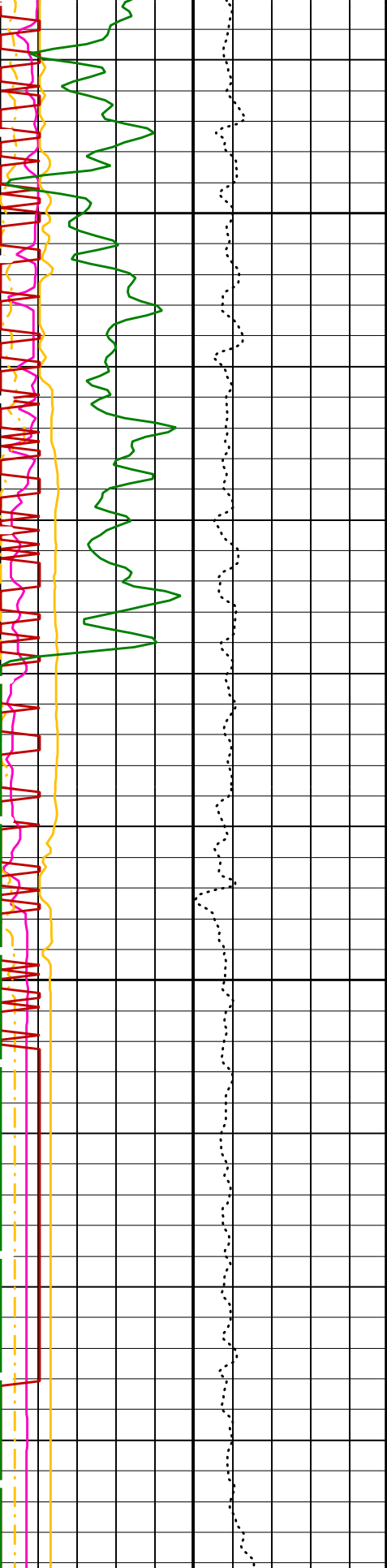




3000

3025



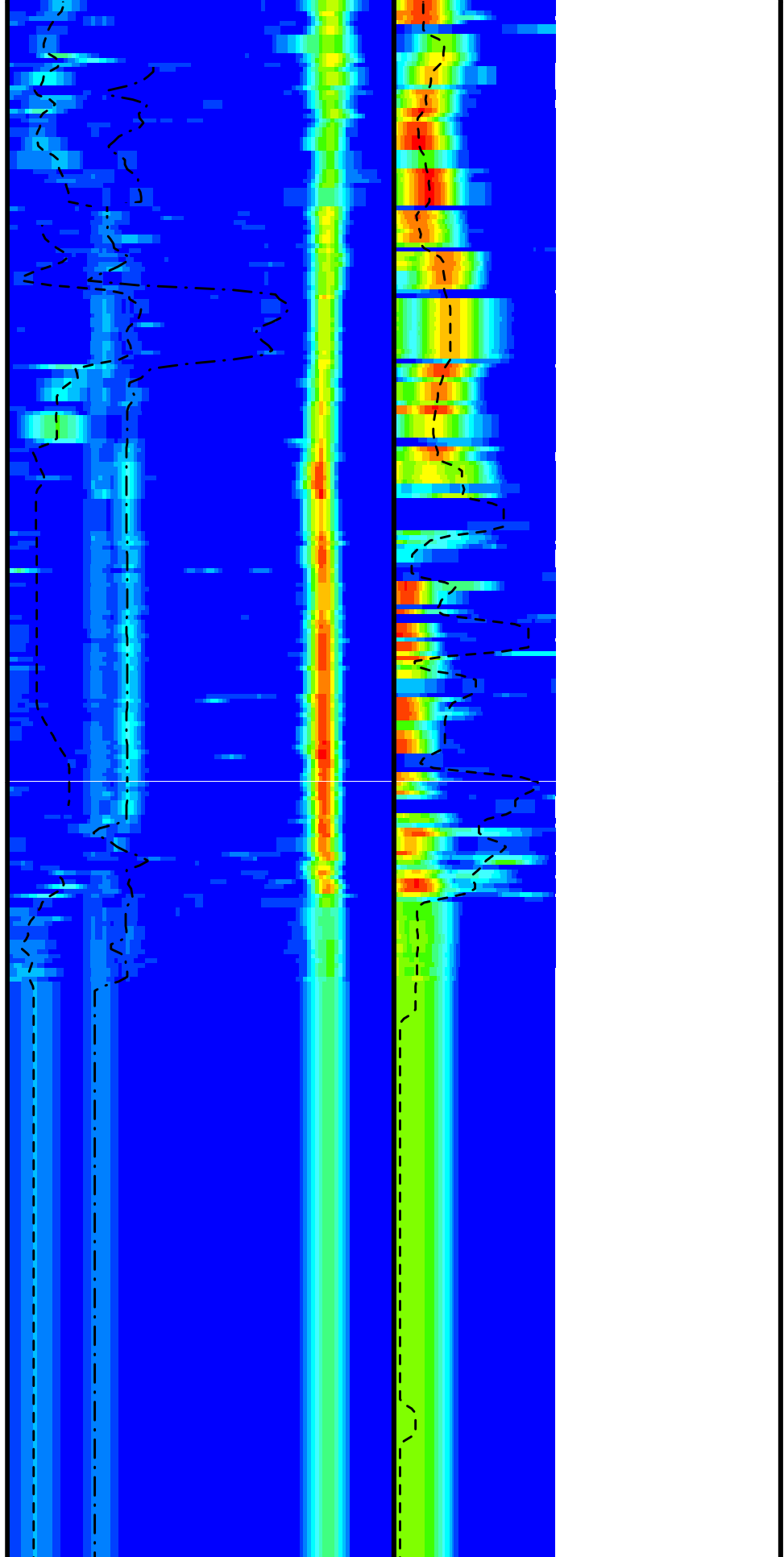


3050

3075

Gamma Ray (GR)
(GAPI) 0 20

Tension (TENS)

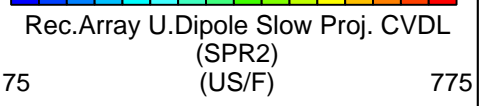
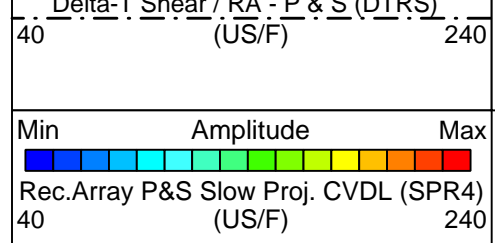
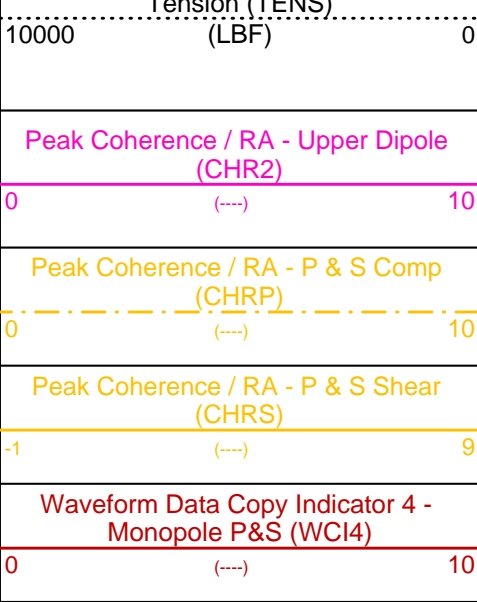


Delta-T Comp / RA - P & S (DTRP)
(US/F) 40 240

Delta-T Shear / RA - P & S (DTRP)

Delta-T Shear / RA - Upper Dipole
(DT2R) 75 775
(US/F)

Min Amplitude Max



PIP SUMMARY

Time Mark Every 60 S

Parameters

DLIS Name	Description	Value
DSST-B: Dipole Shear Imager - B		
BHS	Borehole Status	OPEN
CASF	Label Casing Function - Monopole P&S	50
COLL	Label Slowness Lower Limit - Monopole P&S Compressional	40 US/F
COUL	Label Slowness Upper Limit - Monopole P&S Compressional	186 US/F
DDE2	Digitizing Delay 2	0 US
DDE4	Digitizing Delay 4	0 US
DDEX	Digitizing Delay X	0 US
DLCS	Label Compressional Source - Dipole Shear	USE
DSHL	Label Slowness Lower Limit - Dipole Shear	60 US/F
DSHU	Label Slowness Upper Limit - Dipole Shear	360 US/F
DSI2	Digitizer Sample Interval 2	40 US
DSI4	Digitizer Sample Interval 4	10 US
DSIX	Digitizer Sample Interval X	40 US
DTCS	Compressional Delta-T Source for DTCS Channel	PS_COMP
DTF	Delta-T Fluid	189 US/F
DWC2	Digitizer Word Count 2	512
DWC4	Digitizer Word Count 4	512
DWCX	Digitizer Word Count X	512
FILG	Label Fill Gap Control - Monopole P&S	COMP_SHEAR
LFC	Label Formation Character - Monopole P&S	DYNAMIC
MCS	Mean Casing Slowness	57 US/F
MTXG	Monopole Transmitter Geometry	186 IN
NWI2	Number Waveform Items 2	0
NWI4	Number Waveform Items 4	8
NWIX	Number Waveform Items X	32
RSMN	Label Shear/Compressional Minimum Ratio - Monopole P&S	1.4
RSMX	Label Shear/Compressional Maximum Ratio - Monopole P&S	2.12
RX1G	Receiver 1 Geometry	294 IN
RX2G	Receiver 2 Geometry	300 IN
RX3G	Receiver 3 Geometry	306 IN
RX4G	Receiver 4 Geometry	312 IN
RX5G	Receiver 5 Geometry	318 IN
RX6G	Receiver 6 Geometry	324 IN
RX7G	Receiver 7 Geometry	330 IN
RX8G	Receiver 8 Geometry	336 IN
SAM2	DSST Sonic Acquisition Mode 2 - Upper Dipole Mode	OFF
SAM4	DSST Sonic Acquisition Mode 4 - High Frequency Monopole Mode for P&S	EVEN
SAMX	DSST Sonic Acquisition Mode X - Both Dipoles or Monopole Mode for Expert	BCR
SAS2	STC Sonic Array Status - Upper Dipole	255
SAS4	STC Sonic Array Status - Monopole P&S	255
SBO2	STC Search Band Offset - Upper Dipole	3000 US
SBO4	STC Search Band Offset - Monopole P&S	500 US
SBR4	STC Baseline Removal - Monopole P&S	ON
SBW2	STC Search Bandwidth - Upper Dipole	800 US
SBW4	STC Search Bandwidth - Monopole P&S	2000 US
SFC2	STC Formation Character - Upper Dipole	SELECTABLE
SFC4	STC Formation Character - Monopole P&S	SELECTABLE
SFM2	STC Filter - Upper Dipole	B1-5K
SFM4	STC Filter - Monopole P&S	B3-20K

SHLL	Label Slowness Lower Limit - Monopole P&S Shear	75	US/F
SHUL	Label Slowness Upper Limit - Monopole P&S Shear	186	US/F
SLL2	STC Slowness Lower Limit - Upper Dipole	60	US/F
SLL4	STC Slowness Lower Limit - Monopole P&S	40	US/F
SST2	STC Slowness Step - Upper Dipole	4	US/F
SST4	STC Slowness Step - Monopole P&S	2	US/F
SSW2	STC Source Waveform - Upper Dipole	ODD_IN_SAMX	
SSW4	STC Source Waveform - Monopole P&S	WF_SAM4	
STLL	Label Slowness Lower Limit - Monopole Stoneley	180	US/F
STUL	Label Slowness Upper Limit - Monopole Stoneley	780	US/F
SUL2	STC Slowness Upper Limit - Upper Dipole	360	US/F
SUL4	STC Slowness Upper Limit - Monopole P&S	240	US/F
SWD2	STC Slowness Width - Upper Dipole	40	US/F
SWD4	STC Slowness Width - Monopole P&S	10	US/F
TBF2	STC Time for Baseline Fill - Upper Dipole	0	US
TBF4	STC Time for Baseline Fill - Monopole P&S	300	US
TLL2	STC Time Lower Limit - Upper Dipole	600	US
TLL4	STC Time Lower Limit - Monopole P&S	150	US
TST2	STC Time Step - Upper Dipole	200	US
TST4	STC Time Step - Monopole P&S	50	US
TUL2	STC Time Upper Limit - Upper Dipole	10960	US
TUL4	STC Time Upper Limit - Monopole P&S	3660	US
TWD2	STC Time Width - Upper Dipole	2000	US
TWD4	STC Time Width - Monopole P&S	1000	US
TWI2	STC Integration Time Window - Upper Dipole	1600	US
TWI4	STC Integration Time Window - Monopole P&S	500	US
TWSX	Transmitter Waveform Select X	0	
UTXG	Upper Dipole Transmitter Geometry	162	IN
WFM4	Waveform Mode 4	W1	
BHS	SGT-N: Scintillation Gamma-Ray - N Borehole Status	OPEN	

Format: DSST_P_S_UPPER_VDL_COLOR Vertical Scale: 1:200 Graphics File Created: 01-Aug-2004 23:29

OP System Version: 12C0-301
MCM

MEST-B	12C0-301	DTA-A	12C0-301
DSST-B	12C0-301	SGT-N	12C0-301
DTC-H	12C0-301	BSP	12C0-301

Output DLIS Files

DEFAULT	FMS_DSI_042LUP	FN:52	PRODUCER	01-Aug-2004 23:29
REDUCED	FMS_DSI_042LUP	FN:53	PRODUCER	01-Aug-2004 23:29



Cased Hole

MAXIS Field Log

Input DLIS Files

DEFAULT	FMS_DSI_044LUP	FN:56	PRODUCER	02-Aug-2004 00:08	3035.2 M	2864.2 M
---------	----------------	-------	----------	-------------------	----------	----------

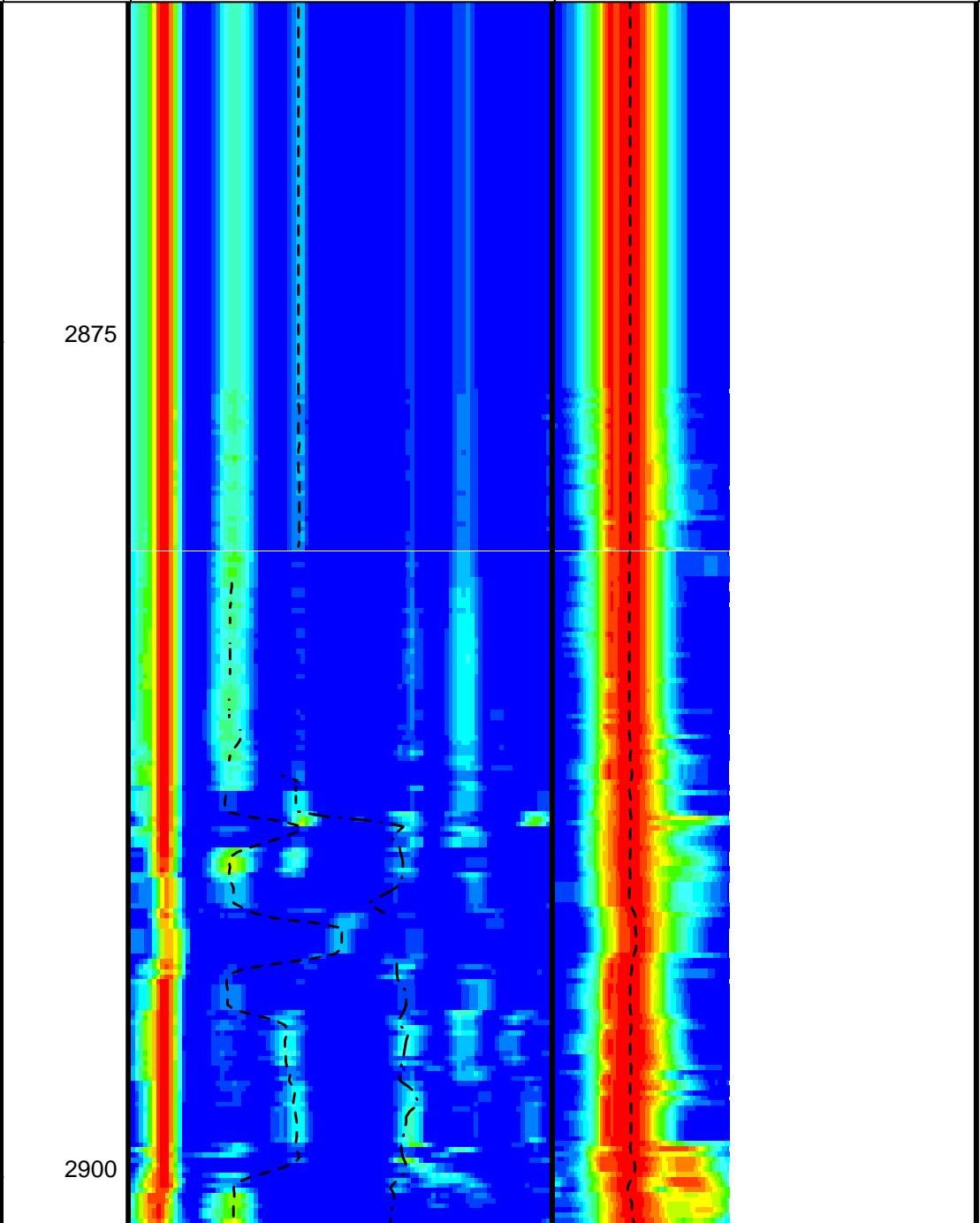
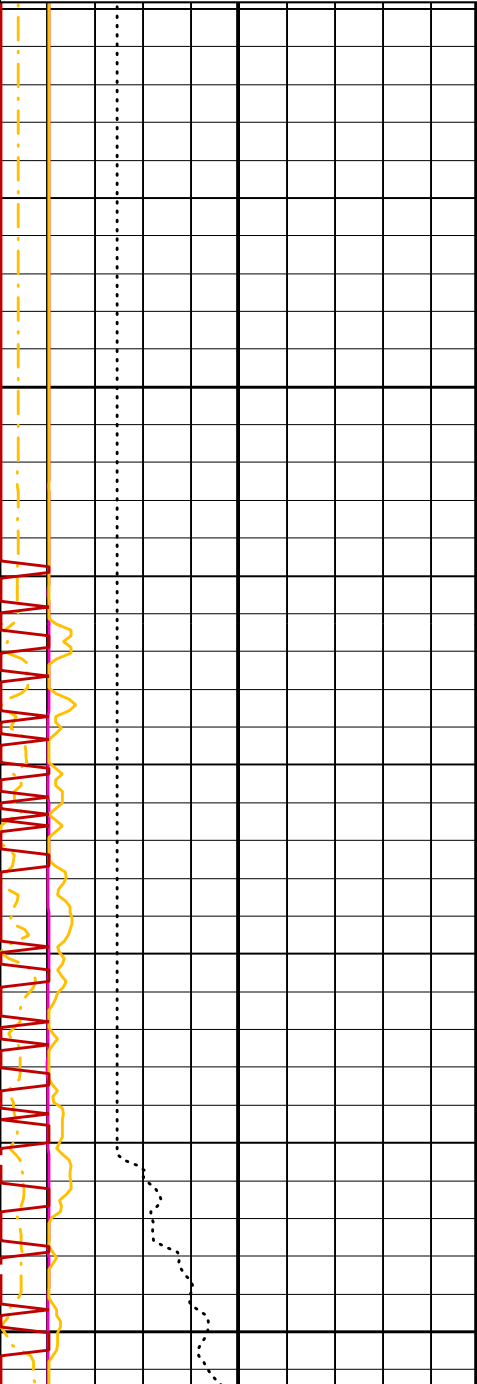
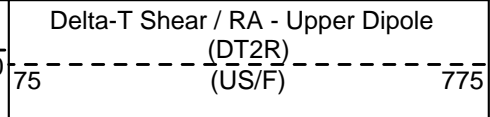
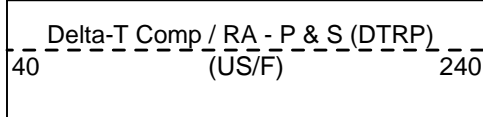
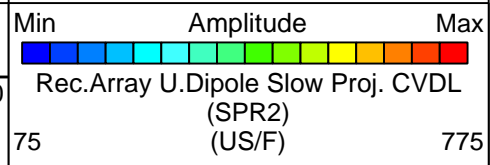
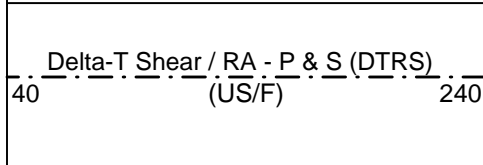
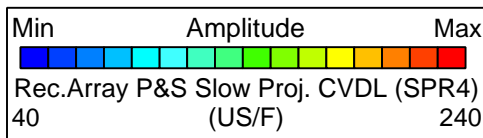
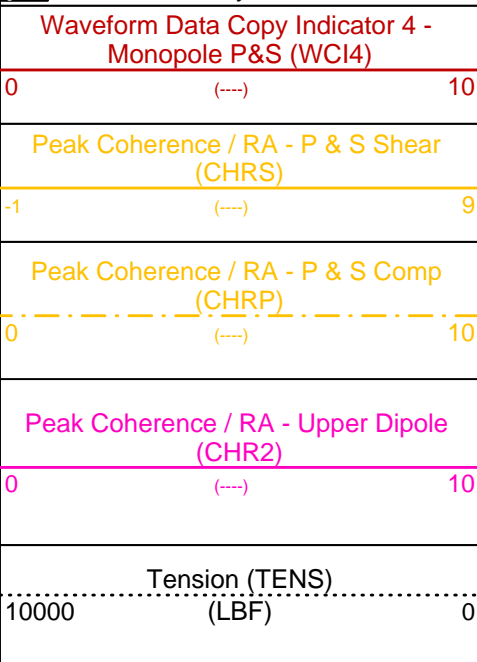
Output DLIS Files

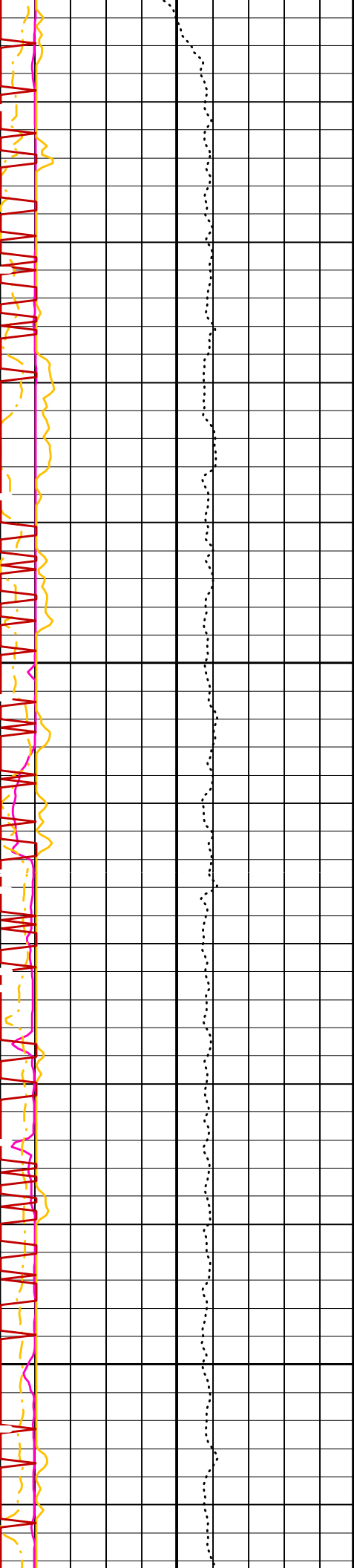
DEFAULT	FMS_DSI_083PUP	FN:93	PRODUCER	07-Aug-2004 19:54	3035.2 M	2864.8 M
---------	----------------	-------	----------	-------------------	----------	----------

OP System Version: 12C0-301
MCM

MEST-B	12C0-301	DTA-A	12C0-301
DSST-B	12C0-301	SGT-N	12C0-301
DTC-H	12C0-301	BSP	12C0-301

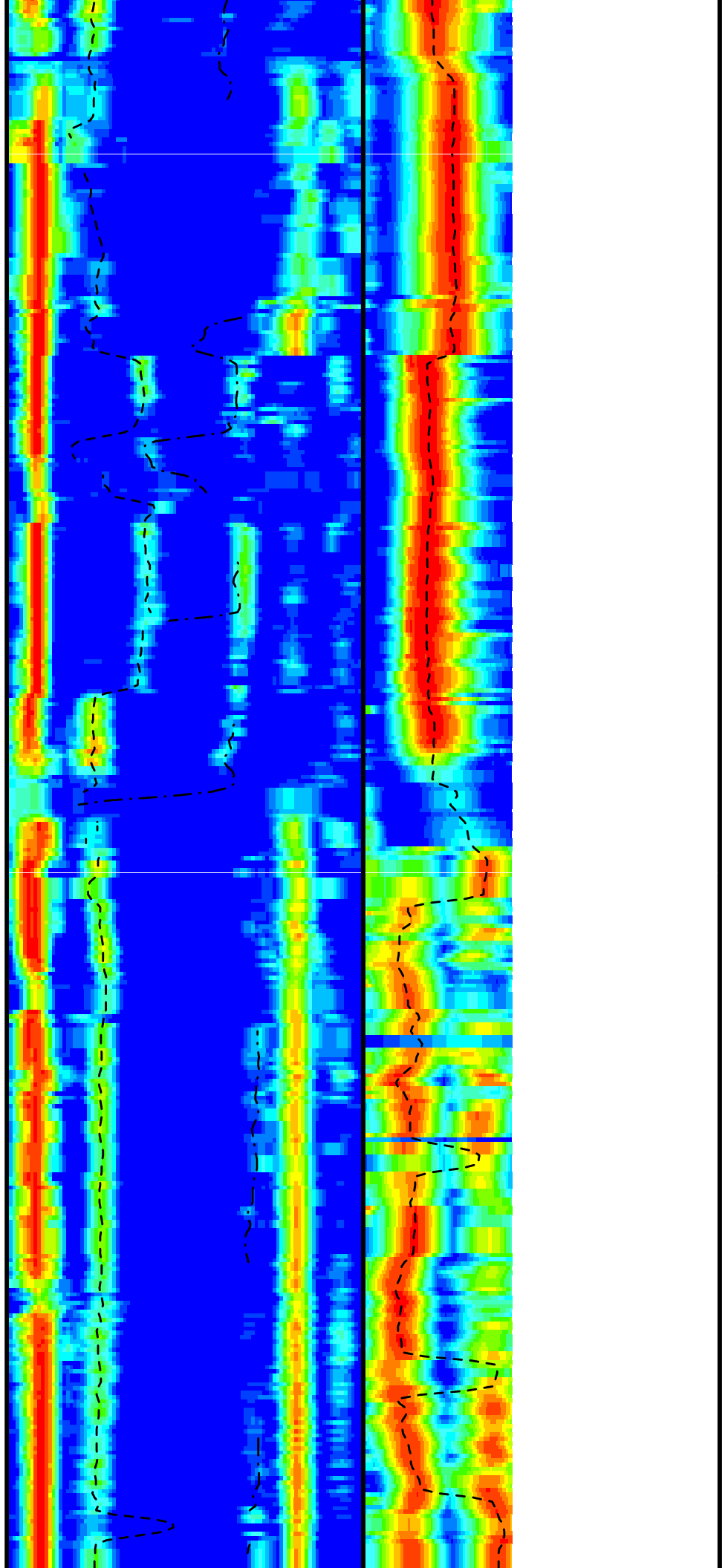
Time Mark Every 60 S

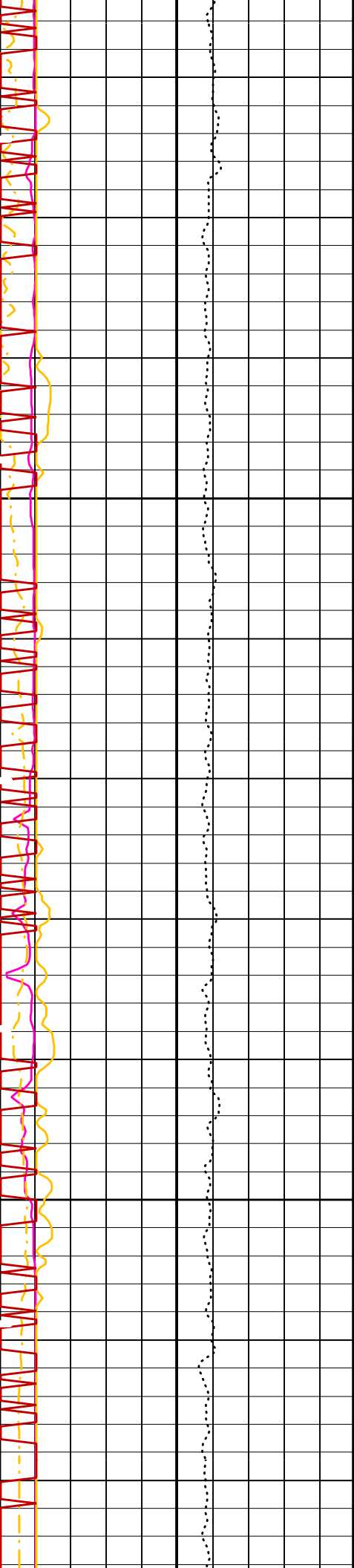




2925

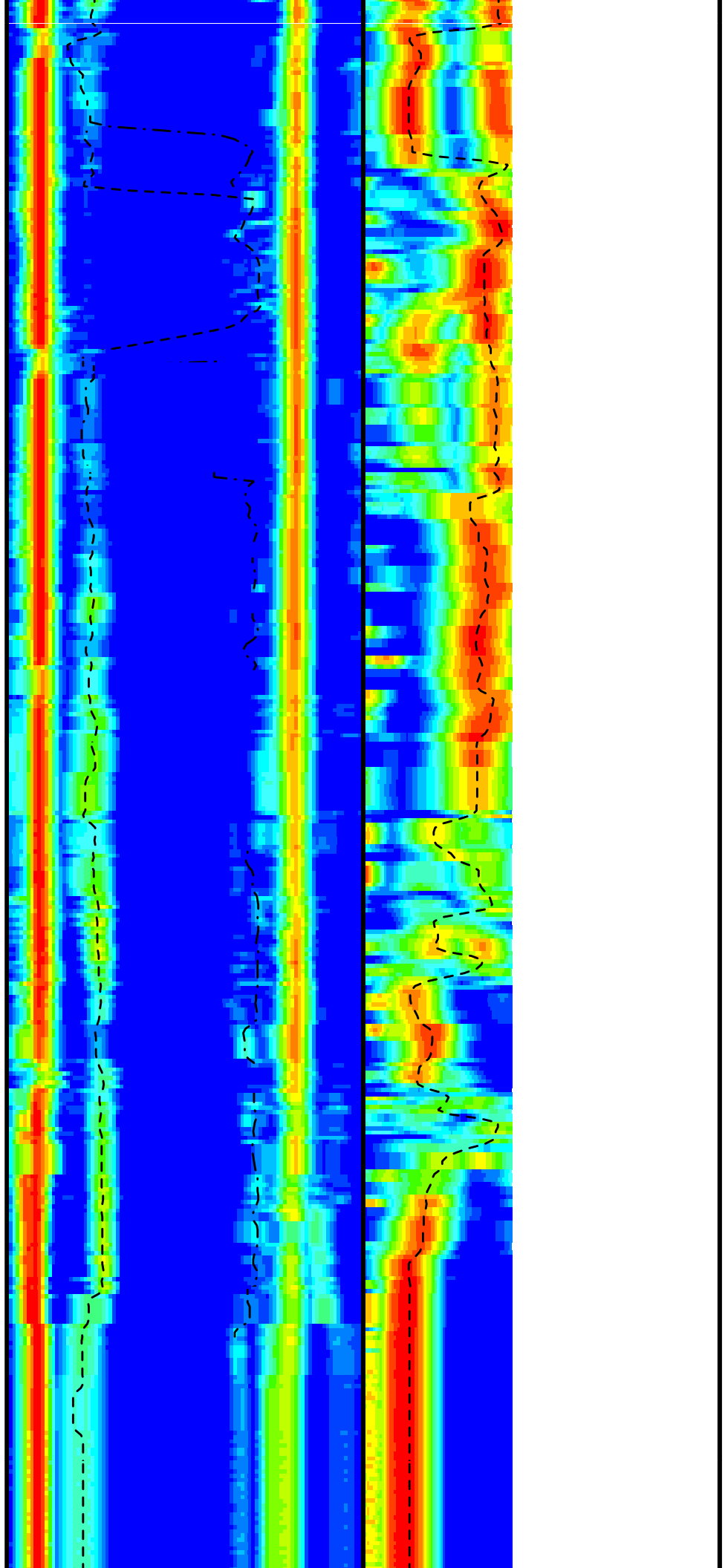
2950

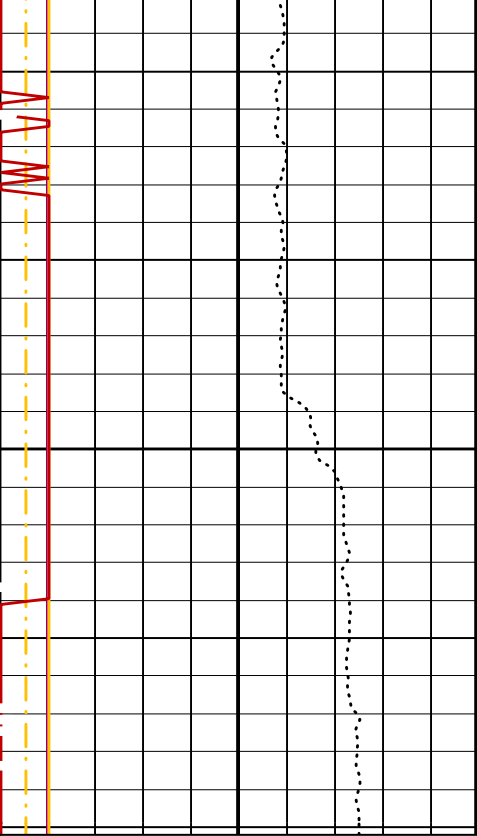




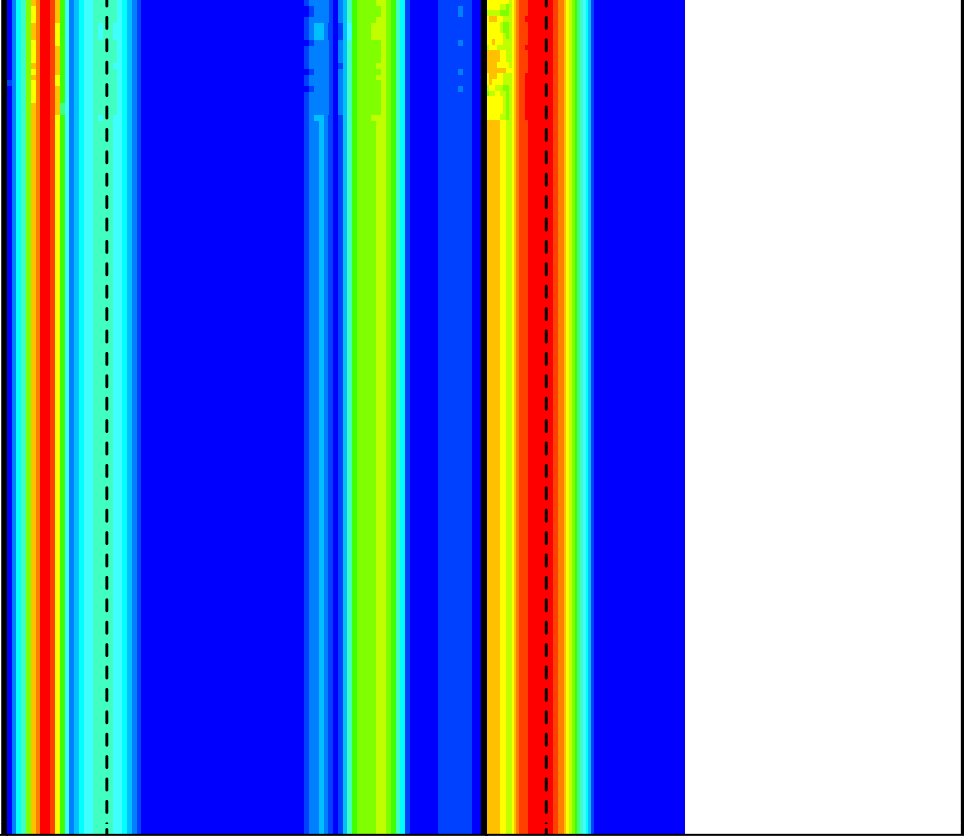
2975

3000





3025



Tension (TENS) (LBF)	10000	0
Peak Coherence / RA - Upper Dipole (CHR2)	0	10
Peak Coherence / RA - P & S Comp (CHRP)	0	10
Peak Coherence / RA - P & S Shear (CHRS)	-1	9
Waveform Data Copy Indicator 4 - Monopole P&S (WCI4)	0	10

Delta-T Comp / RA - P & S (DTRP) (US/F)	40	240
Delta-T Shear / RA - P & S (DTRS) (US/F)	40	240
Min Amplitude Max Rec.Array P&S Slow Proj. CVDL (SPR4) (US/F)	40	240

Delta-T Shear / RA - Upper Dipole (DT2R) (US/F)	75	775
Min Amplitude Max Rec.Array U.Dipole Slow Proj. CVDL (SPR2) (US/F)	75	775

PIP SUMMARY

Time Mark Every 60 S

Parameters

DLIS Name	Description	Value
DSST-B:	Dipole Shear Imager - B	
BHS	Borehole Status	CASED
CASF	Label Casing Function - Monopole P&S	50
COLL	Label Slowness Lower Limit - Monopole P&S Compressional	65 US/F
COUL	Label Slowness Upper Limit - Monopole P&S Compressional	186 US/F
DDE2	Digitizing Delay 2	0 US
DDE4	Digitizing Delay 4	0 US
DDEX	Digitizing Delay X	0 US
DLCS	Label Compressional Source - Dipole Shear	USE
DSHL	Label Slowness Lower Limit - Dipole Shear	60 US/F
DSHU	Label Slowness Upper Limit - Dipole Shear	360 US/F
DSI2	Digitizer Sample Interval 2	40 US
DSI4	Digitizer Sample Interval 4	10 US
DSIX	Digitizer Sample Interval X	40 US
DTCS	Compressional Delta-T Source for DTCS Channel	PS_COMP
DTF	Delta-T Fluid	189 US/F

DWC2	Digitizer Word Count 2	512	
DWC4	Digitizer Word Count 4	512	
DWCX	Digitizer Word Count X	512	
FILG	Label Fill Gap Control - Monopole P&S	COMP_SHEAR	
LFC	Label Formation Character - Monopole P&S	DYNAMIC	
MCS	Mean Casing Slowness	57	US/F
MTXG	Monopole Transmitter Geometry	186	IN
NWI2	Number Waveform Items 2	8	
NWI4	Number Waveform Items 4	8	
NWIX	Number Waveform Items X	0	
RSMN	Label Shear/Compressional Minimum Ratio - Monopole P&S	1.4	
RSMX	Label Shear/Compressional Maximum Ratio - Monopole P&S	2.12	
RX1G	Receiver 1 Geometry	294	IN
RX2G	Receiver 2 Geometry	300	IN
RX3G	Receiver 3 Geometry	306	IN
RX4G	Receiver 4 Geometry	312	IN
RX5G	Receiver 5 Geometry	318	IN
RX6G	Receiver 6 Geometry	324	IN
RX7G	Receiver 7 Geometry	330	IN
RX8G	Receiver 8 Geometry	336	IN
SAM2	DSST Sonic Acquisition Mode 2 - Upper Dipole Mode	ODD	
SAM4	DSST Sonic Acquisition Mode 4 - High Frequency Monopole Mode for P&S	EVEN	
SAMX	DSST Sonic Acquisition Mode X - Both Dipoles or Monopole Mode for Expert	OFF	
SAS2	STC Sonic Array Status - Upper Dipole	255	
SAS4	STC Sonic Array Status - Monopole P&S	255	
SBO2	STC Search Band Offset - Upper Dipole	3000	US
SBO4	STC Search Band Offset - Monopole P&S	500	US
SBR4	STC Baseline Removal - Monopole P&S	ON	
SBW2	STC Search Bandwidth - Upper Dipole	8000	US
SBW4	STC Search Bandwidth - Monopole P&S	2000	US
SFC2	STC Formation Character - Upper Dipole	SELECTABLE	
SFC4	STC Formation Character - Monopole P&S	SELECTABLE	
SFM2	STC Filter - Upper Dipole	B1-5K	
SFM4	STC Filter - Monopole P&S	B3-20K	
SHLL	Label Slowness Lower Limit - Monopole P&S Shear	75	US/F
SHUL	Label Slowness Upper Limit - Monopole P&S Shear	180	US/F
SSL2	STC Slowness Lower Limit - Upper Dipole	60	US/F
SSL4	STC Slowness Lower Limit - Monopole P&S	40	US/F
SST2	STC Slowness Step - Upper Dipole	4	US/F
SST4	STC Slowness Step - Monopole P&S	2	US/F
SSW2	STC Source Waveform - Upper Dipole	WF_SAM2	
SSW4	STC Source Waveform - Monopole P&S	WF_SAM4	
STLL	Label Slowness Lower Limit - Monopole Stoneley	180	US/F
STUL	Label Slowness Upper Limit - Monopole Stoneley	780	US/F
SUL2	STC Slowness Upper Limit - Upper Dipole	360	US/F
SUL4	STC Slowness Upper Limit - Monopole P&S	240	US/F
SWD2	STC Slowness Width - Upper Dipole	40	US/F
SWD4	STC Slowness Width - Monopole P&S	10	US/F
TBF2	STC Time for Baseline Fill - Upper Dipole	0	US
TBF4	STC Time for Baseline Fill - Monopole P&S	300	US
TLL2	STC Time Lower Limit - Upper Dipole	600	US
TLL4	STC Time Lower Limit - Monopole P&S	150	US
TST2	STC Time Step - Upper Dipole	200	US
TST4	STC Time Step - Monopole P&S	50	US
TUL2	STC Time Upper Limit - Upper Dipole	10960	US
TUL4	STC Time Upper Limit - Monopole P&S	3660	US
TWD2	STC Time Width - Upper Dipole	2000	US
TWD4	STC Time Width - Monopole P&S	1000	US
TWI2	STC Integration Time Window - Upper Dipole	1600	US
TWI4	STC Integration Time Window - Monopole P&S	500	US
TWSX	Transmitter Waveform Select X	0	
UTXG	Upper Dipole Transmitter Geometry	162	IN
WFM4	Waveform Mode 4	W1	
BHS	SGT-N: Scintillation Gamma-Ray - N Borehole Status	CASED	
DO	System and Miscellaneous Depth Offset for Playback	0.0	M
PP	Playback Processing	RECOMPUTE	

Format: DSST_P_S_UPPER_VDL_COLOR Vertical Scale: 1:200 Graphics File Created: 07-Aug-2004 19:55

OP System Version: 12C0-301

MCM

MEST-B	12C0-301	DTA-A	12C0-301
DSST-B	12C0-301	SGT-N	12C0-301
DTC-H	12C0-301	BSP	12C0-301

Input DLIS Files

DEFAULT	FMS DSI 044LUP	FN:56	PRODUCER	02-Aug-2004 00:08	3035.2 M	2864.2 M
---------	----------------	-------	----------	-------------------	----------	----------

Output DLIS Files

DEFAULT

FMS_DSI_083PUP

FN:93

PRODUCER

07-Aug-2004 19:54



Calibrations

MAXIS Field Log

Calibration and Check Summary

Measurement	Nominal	Master	Before	After	Change	Limit	Units
Micro Electrical Scanner - B (Slim) Wellsite Calibration - Caliper Calibration							
Before: 6-Jul-2004 18:47							
Caliper 1 Zero Measurement	8.000	N/A	8.457	N/A	N/A	N/A	IN
Caliper 2 Zero Measurement	8.000	N/A	8.368	N/A	N/A	N/A	IN
Caliper 1 Plus Measurement	12.00	N/A	12.48	N/A	N/A	N/A	IN
Caliper 2 Plus Measurement	12.00	N/A	12.40	N/A	N/A	N/A	IN
Micro Electrical Scanner - B (Slim) Wellsite Calibration - CROUZET ACCELEROMETER PROM HAS BEEN READ CORRECTLY							
Before: 1-Aug-2004 20:47							
TEMPERATURE REFERENCE :	N/A	N/A	20	N/A	N/A	N/A	DEGC
YEAR OF CALIBRATION :	N/A	N/A	92	N/A	N/A	N/A	
MONTH OF CALIBRATION :	N/A	N/A	10	N/A	N/A	N/A	
SERIAL NUMBER :	N/A	N/A	448	N/A	N/A	N/A	
Micro Electrical Scanner - B (Slim) Wellsite Calibration - CROUZET MAGNETOMETER PROM HAS BEEN READ CORRECTLY							
Before: 1-Aug-2004 20:47							
TEMPERATURE REFERENCE :	N/A	N/A	19	N/A	N/A	N/A	DEGC
YEAR OF CALIBRATION :	N/A	N/A	99	N/A	N/A	N/A	
MONTH OF CALIBRATION :	N/A	N/A	12	N/A	N/A	N/A	
SERIAL NUMBER :	N/A	N/A	428	N/A	N/A	N/A	
Scintillation Gamma-Ray - N Wellsite Calibration - Detector Calibration							
Before: 1-Aug-2004 20:48							
Gamma Ray (Jig - Bkg)	153.3	N/A	153.3	N/A	N/A	13.94	GAPI
Gamma Ray (Calibrated)	165.0	N/A	165.0	N/A	N/A	15.00	GAPI

Micro Electrical Scanner - B (Slim) / Equipment Identification

Primary Equipment:

MEST Sonde - B	MEDS - B	702
MEST Preamplifier Cartridge - AB	MEPC - AB	877
GPIT Cartridge - A	GPIC - A	719
MEST Acquisition Cartridge - A	MEAC - A	875

Auxiliary Equipment:

MEST-B Preamplifier Cartridge Housing	MEPH - A	769
MEST Acquisition Cartridge Housing (Slim)	MEAH - B	769

Scintillation Gamma-Ray - N / Equipment Identification

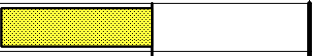
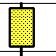
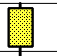
Primary Equipment:

Scintillation Gamma Cartridge	SGC - TB	9582
Scintillation Gamma Detector	SGD - TAA	

Auxiliary Equipment:

Scintillation Gamma-Ray - N Wellsite Calibration

Detector Calibration

Phase	Gamma Ray Background GAPI	Value	Phase	Gamma Ray (Jig - Bkg) GAPI	Value	Phase	Gamma Ray (Calibrated) GAPI	Value
Before		1.234	Before		153.3	Before		165.0
	0 (Minimum)			139.4 (Minimum)			150.0 (Minimum)	
	30.00 (Nominal)			153.3 (Nominal)			165.0 (Nominal)	
	120.0 (Maximum)			167.3 (Maximum)			180.0 (Maximum)	

Before: 1-Aug-2004 20:48

Company: Lamont Doherty

Schlumberger

Well: Site 1301 B
Field: Expedition 301
County: Juan de Fuca
State: Oregon

Dipole Shear Sonic Imager,

Gamma Ray.