

**Company:** Lamont Doherty

**Well:** IODP EXP 306 Site 642 E

**Field:** Voring Plateau

**Country:** Norway

**Ocean:** Atlantic Ocean

## Dipole Sonic

**Country:** Norway  
**Field:** Voring Plateau  
**Location:** Rig- Joides Resolution  
**Well:** IODP EXP 306 Site 642 E  
**Company:** Lamont Doherty

LOCATION		
Rig- Joides Resolution		
Permanent Datum:	GROUND LEVEL	Elev.: K.B. 11.3 m
Log Measured From: DES		G.L. -1289 m
Drilling Measured From: DES		D.F. 11 m
API Serial No.	Max. Hole Devi.	Elev.: 0 m 11.3 m above Perm. Datum
4/21/05		
	Longitude	Latitude
	E 2 56.2398	N 67 12.7458

Logging Date	4/21/05	
Run Number	1	
Depth Driller	2518.4 m	
Schlumberger Depth	1878 m	
Bottom Log Interval	1877 m	
Top Log Interval	1642 m	
Casing Driller Size @ Depth	0.000 in @ 1660.5 m	
Casing Schlumberger	1660 m	
Bit Size	9.875 in	
Type Fluid In Hole	unknown	
Density	1.066 g/cm3	
Fluid Loss	0 cm3	
Source Of Sample		
RM @ Measured Temperature	0.322 ohm.m @ 23 degC	
RMF @ Measured Temperature	@ @	
RMC @ Measured Temperature	@ @	
Source RMF	RMC	
RM @ MRT	0.362 @ 18 @ 18	
Maximum Recorded Temperatures	18 degC	
Circulation Stopped	n/a	n/a
Logger On Bottom	4/21/05	See Log
Unit Number	99	Houston
Recorded By	Steve Kittredge	
Witnessed By	Sean Higgins	

Logging Date	4/21/05	
Run Number	1	
Depth Driller	2518.4 m	
Schlumberger Depth	1878 m	
Bottom Log Interval	1877 m	
Top Log Interval	1642 m	
Casing Driller Size @ Depth	0.000 in @ 1660.5 m	
Casing Schlumberger	1660 m	
Bit Size	9.875 in	
Type Fluid In Hole	unknown	
Density	1.066 g/cm3	
Fluid Loss	0 cm3	
Source Of Sample		
RM @ Measured Temperature	0.322 ohm.m @ 23 degC	
RMF @ Measured Temperature	@ @	
RMC @ Measured Temperature	@ @	
Source RMF	RMC	
RM @ MRT	0.362 @ 18 @ 18	
Maximum Recorded Temperatures	18 degC	
Circulation Stopped	n/a	n/a
Logger On Bottom	4/21/05	See Log
Unit Number	99	Houston
Recorded By	Steve Kittredge	
Witnessed By	Sean Higgins	

Logging Date	Run 1	Run 2	Run
Run Number			
Depth Driller			
Schlumberger Depth			
Bottom Log Interval			
Top Log Interval			
Casing Driller Size @ Depth			
Casing Schlumberger			
Bit Size			
Type Fluid In Hole			
Density			
Fluid Loss			
Source Of Sample			
RM @ Measured Temperature	@	@	@
RMF @ Measured Temperature	@	@	@
RMC @ Measured Temperature	@	@	@
Source RMF	RMC		
RM @ MRT	0.362 @ 18 @ 18		
Maximum Recorded Temperatures	18 degC		
Circulation Stopped	n/a	n/a	
Logger On Bottom	4/21/05	See Log	
Unit Number	99	Houston	
Recorded By	Steve Kittredge		
Witnessed By	Sean Higgins		

Logging Date	4/21/05	
Run Number	1	
Depth Driller	2518.4 m	
Schlumberger Depth	1878 m	
Bottom Log Interval	1877 m	
Top Log Interval	1642 m	
Casing Driller Size @ Depth	0.000 in @ 1660.5 m	
Casing Schlumberger	1660 m	
Bit Size	9.875 in	
Type Fluid In Hole	unknown	
Density	1.066 g/cm3	
Fluid Loss	0 cm3	
Source Of Sample		
RM @ Measured Temperature	0.322 ohm.m @ 23 degC	
RMF @ Measured Temperature	@ @	
RMC @ Measured Temperature	@ @	
Source RMF	RMC	
RM @ MRT	0.362 @ 18 @ 18	
Maximum Recorded Temperatures	18 degC	
Circulation Stopped	n/a	n/a
Logger On Bottom	4/21/05	See Log
Unit Number	99	Houston
Recorded By	Steve Kittredge	
Witnessed By	Sean Higgins	

**DISCLAIMER**

THE USE OF AND RELIANCE UPON THIS RECORDED-DATA BY THE HEREIN NAMED COMPANY (AND ANY OF ITS AFFILIATES, PARTNERS, REPRESENTATIVES, AGENTS, CONSULTANTS AND EMPLOYEES) IS SUBJECT TO THE TERMS AND CONDITIONS AGREED UPON BETWEEN SCHLUMBERGER AND THE COMPANY, INCLUDING: (a) RESTRICTIONS ON USE OF THE RECORDED-DATA; (b) DISCLAIMERS AND WAIVERS OF WARRANTIES AND REPRESENTATIONS REGARDING COMPANY'S USE OF AND RELIANCE UPON THE RECORDED-DATA; AND (c) CUSTOMER'S FULL AND SOLE RESPONSIBILITY FOR ANY INFERENCE DRAWN OR DECISION MADE IN CONNECTION WITH THE USE OF THIS RECORDED-DATA.




OTHER SERVICES1 OS1: DITE/HLDS/APS/HNGS OS2: OS3: OS4: OS5:	OTHER SERVICES2 OS1: OS2: OS3: OS4: OS5:
--	---

REMARKS: RUN NUMBER 1 Hole Cored with RCB in 1985 All depths in Meters Below Rig Floor (MBRF). Hole not circulated Sea Floor Depth 1289 MBRF Total Depth Driller- 2518.4 MBRF Total Depth Logger- 1878 MBRF. Casing bottom Driller- 1660.5 MBRF Casing Bottom Logger- 1660 MBRF. Could not reach TD due to blockage.	REMARKS: RUN NUMBER 2
---	-----------------------

RUN 1			RUN 2		
SERVICE ORDER #:		12C0-301	SERVICE ORDER #:		
PROGRAM VERSION:			PROGRAM VERSION:		
FLUID LEVEL:			FLUID LEVEL:		
LOGGED INTERVAL	START	STOP	LOGGED INTERVAL	START	STOP

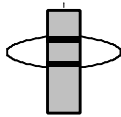
**EQUIPMENT DESCRIPTION**

RUN 1		RUN 2	
<b>SURFACE EQUIPMENT</b>			
GSR-U/Y 166 WITM (DTS)-A			

<b>DOWNHOLE EQUIPMENT</b>			
LEH-QT			32.33
LEH-QT			
DTC-H	CTEM		31.16
ECH-KC	TelStatus		31.44
	ToolStatu		30.53
SGT-N	Gamma Ray		30.25
SGH-K 2448			30.53

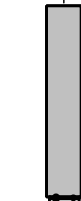
SGC-TB 9582  
SGD-TAA

AH-MCD  
AH-MCD

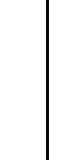


28.85

DSST-B  
SPAC-B 16  
ECH-SD 16  
SMDR-BD 8070  
SSIJ-BA 10  
SMDX-AA 66

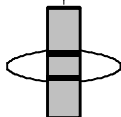


26.73



PWF — 11.18

AH-MCD  
AH-MCD



11.18

DTA-A  
ECH-KE  
DTA-A 8231



8.90

MEST-B  
MEAH-B 769  
MEAC-A 875  
MEPH-A 769  
GPIC-A 840  
MEPC-AB  
MEDS-B 724



7.68

MEDR MEAC  
MEPC MEDS-B  
HV DF  
Tension GPIT



0.46

0.00

TOOL ZERO

MAXIMUM STRING DIAMETER 4.50 IN  
MEASUREMENTS RELATIVE TO TOOL ZERO  
ALL LENGTHS IN METERS

**Schlumberger**

FIRST PASS

MAXIS Field Log

Input DLIS Files

DEFAULT	FMS_DSI_022LUP	FN:20	PRODUCER	21-Apr-2005 02:40	1877.6 M	1642.1 M
---------	----------------	-------	----------	-------------------	----------	----------

Output DLIS Files

DEFAULT	FMS_DSI_042PUP	FN:35	PRODUCER	23-Apr-2005 10:07	1877.6 M	1642.6 M
---------	----------------	-------	----------	-------------------	----------	----------

OP System Version: 12C0-301

MCM

MEST-B	12C0-301	DTA-A	12C0-301
DSST-B	12C0-301	SGT-N	12C0-301
DTC-H	12C0-301		

PIP SUMMARY

 Time Mark Every 60 S

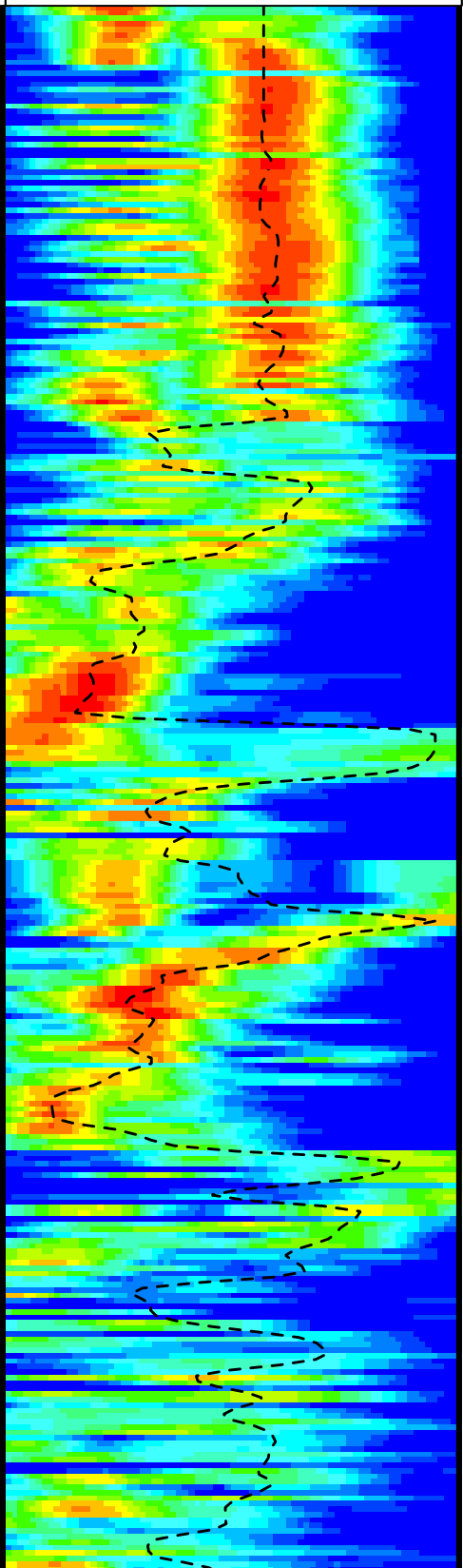
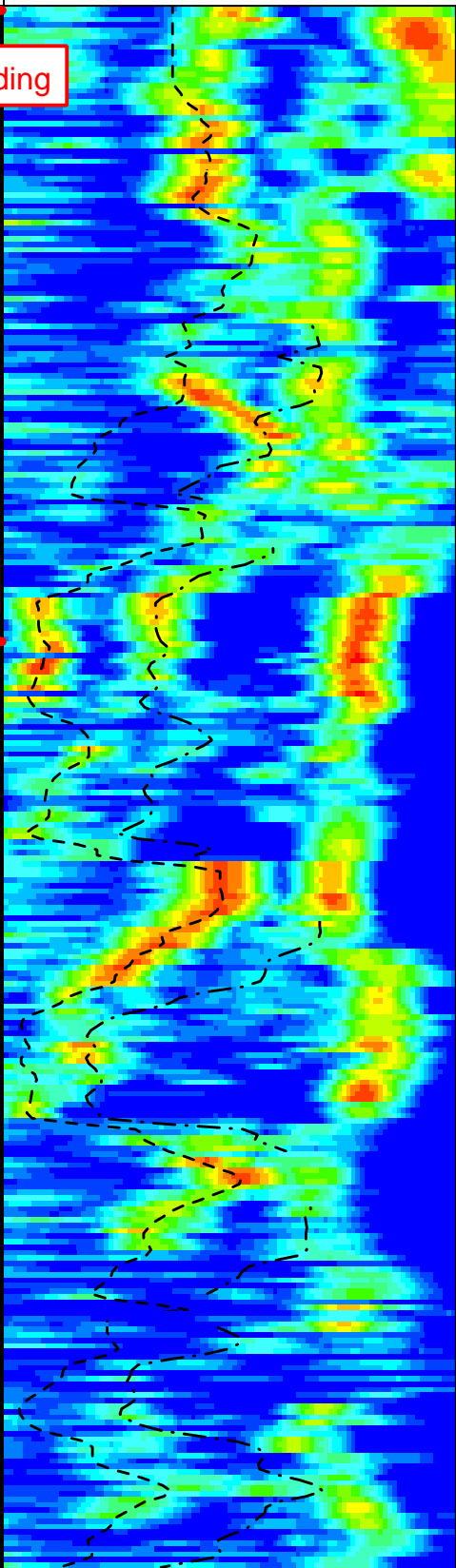
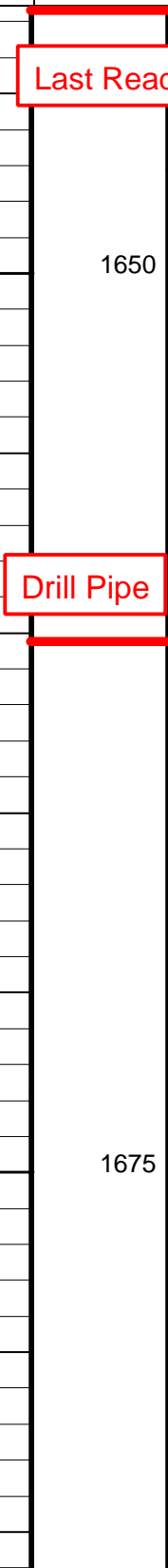
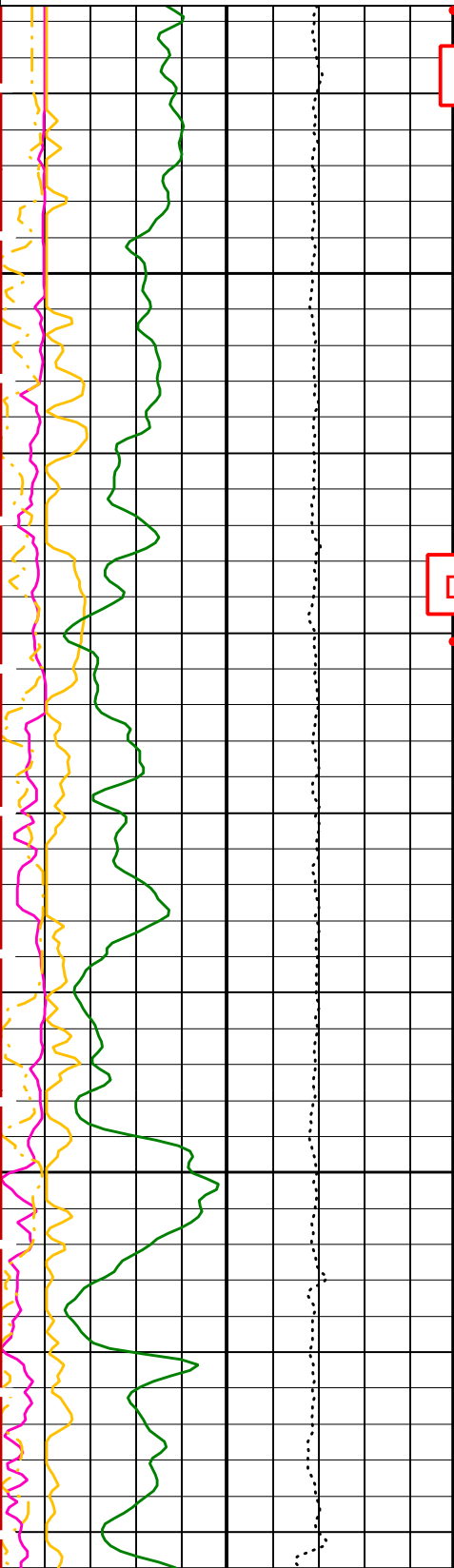
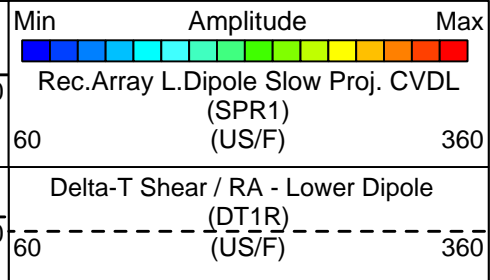
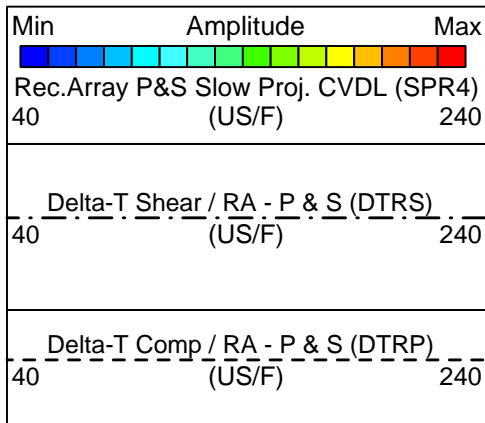
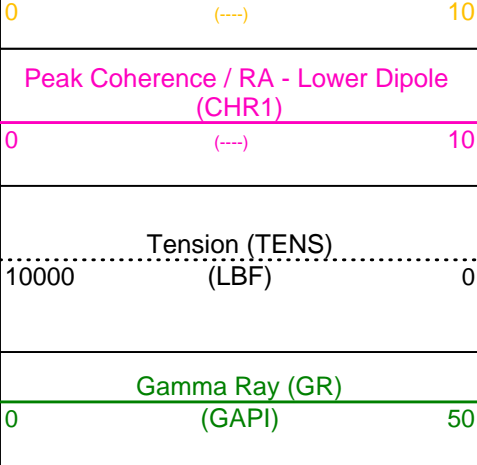
Waveform Data Copy Indicator 4 -  
Monopole P&S (WCI4)

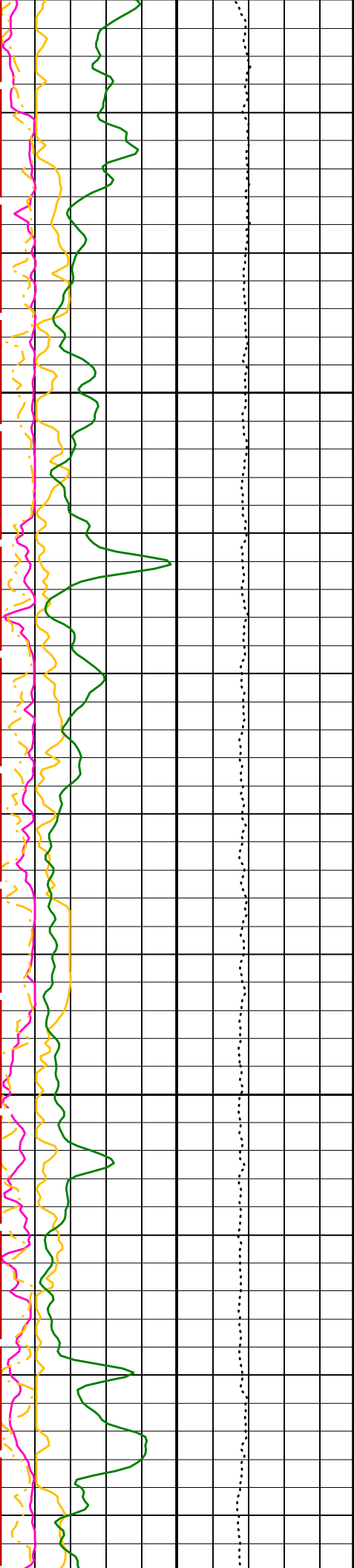
0 (---) 10

Peak Coherence / RA - P & S Shear  
(CHRS)

-1 (---) 9

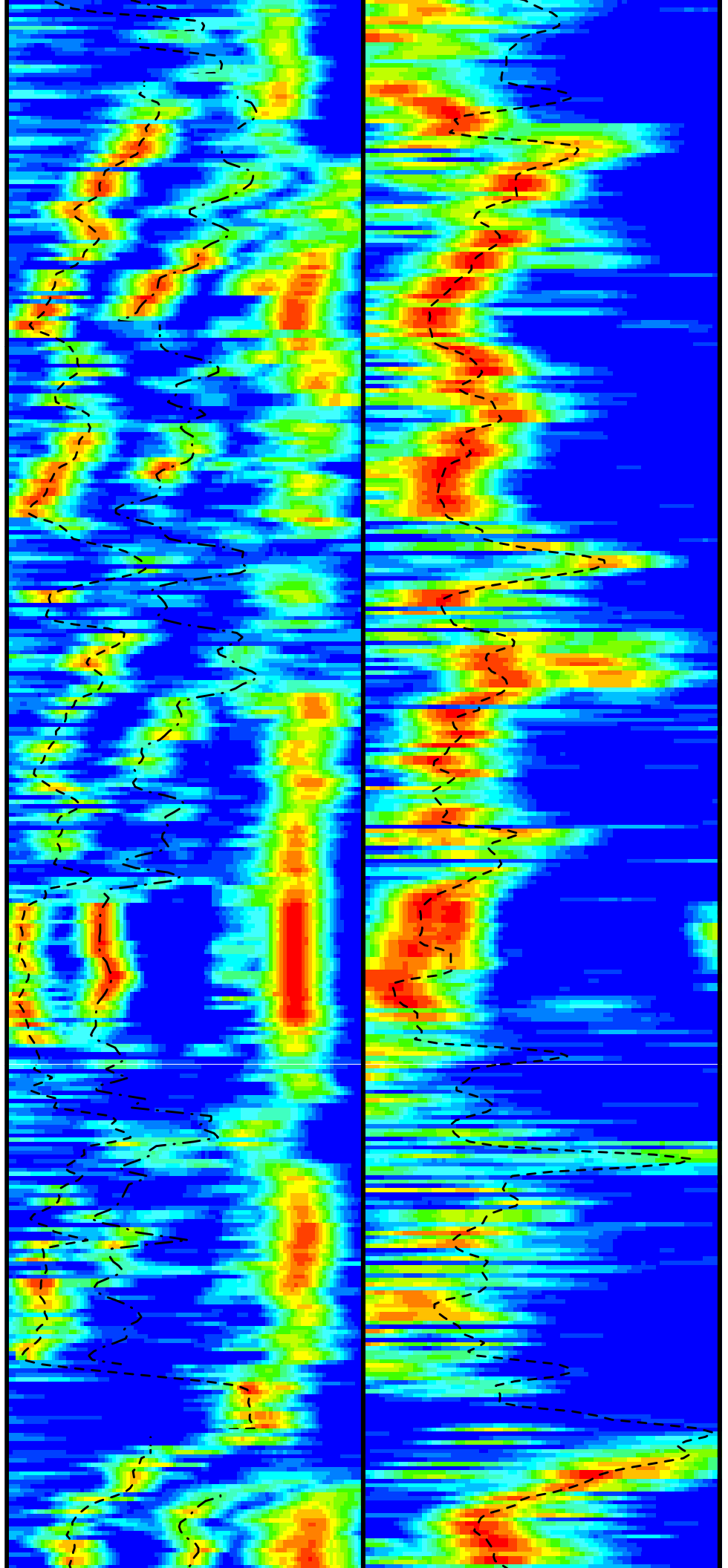
Peak Coherence / RA - P & S Comp  
(CHRP)

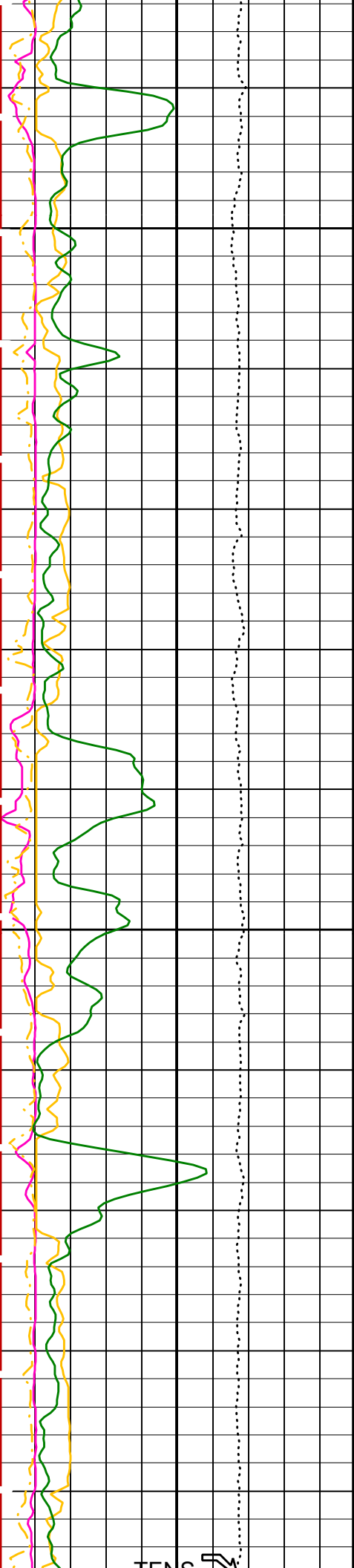




1700

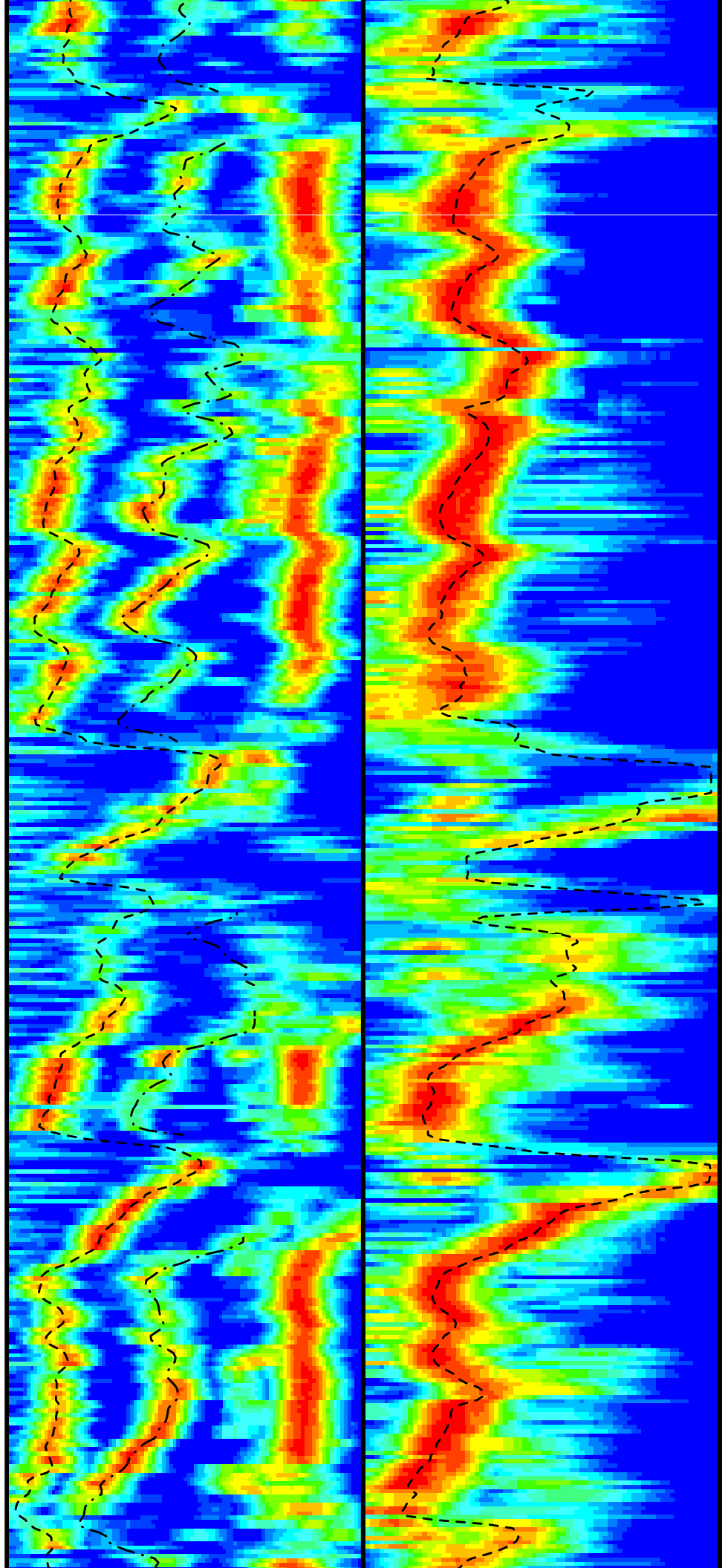
1725



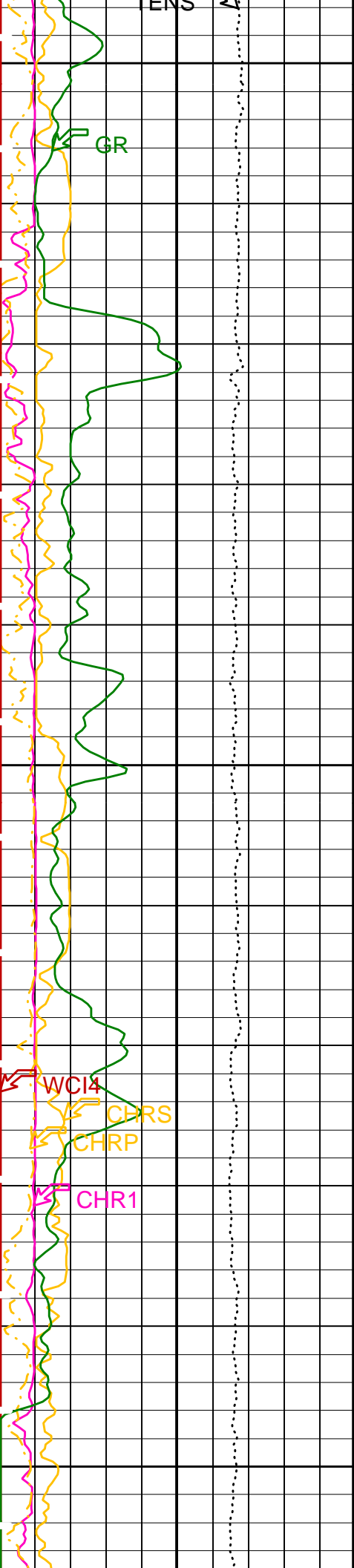


1750

1775



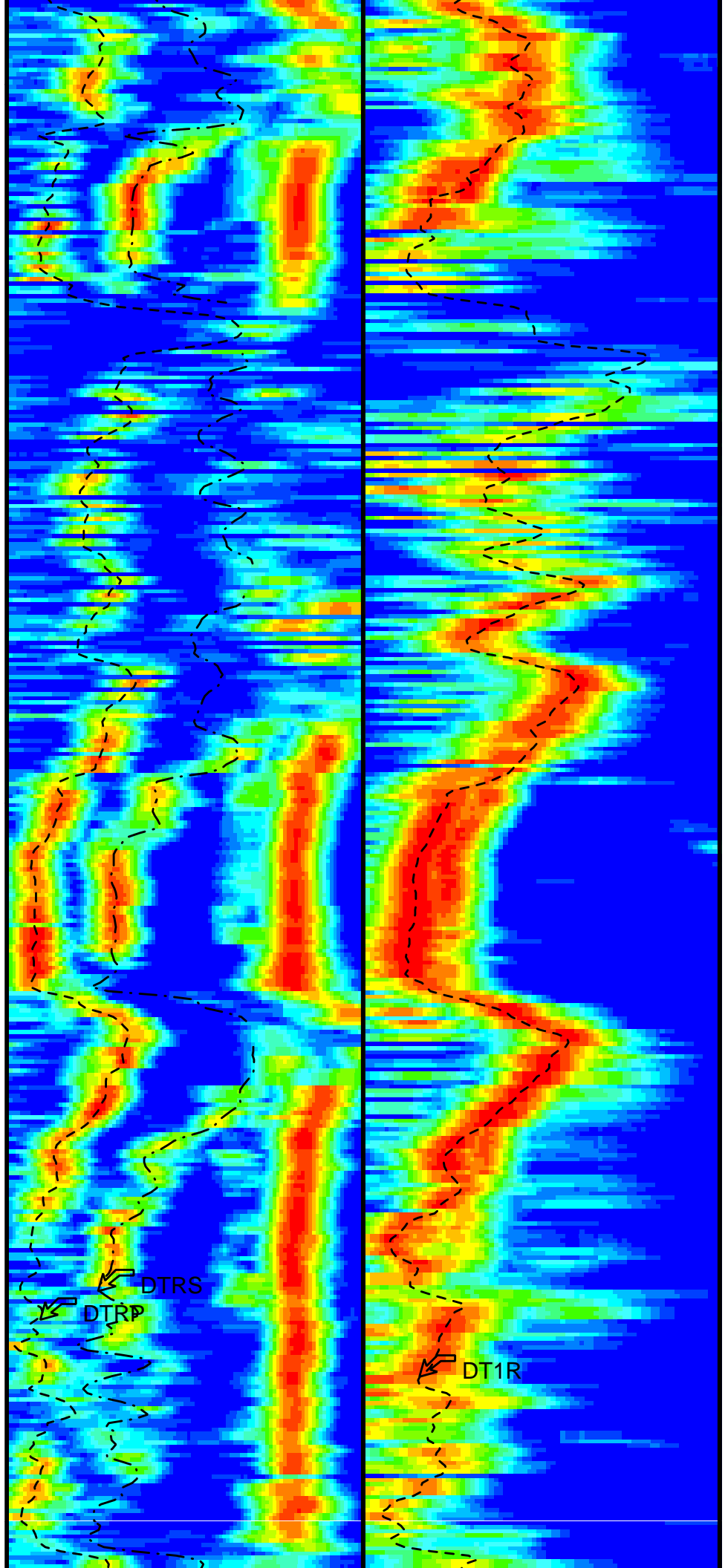
TEMP



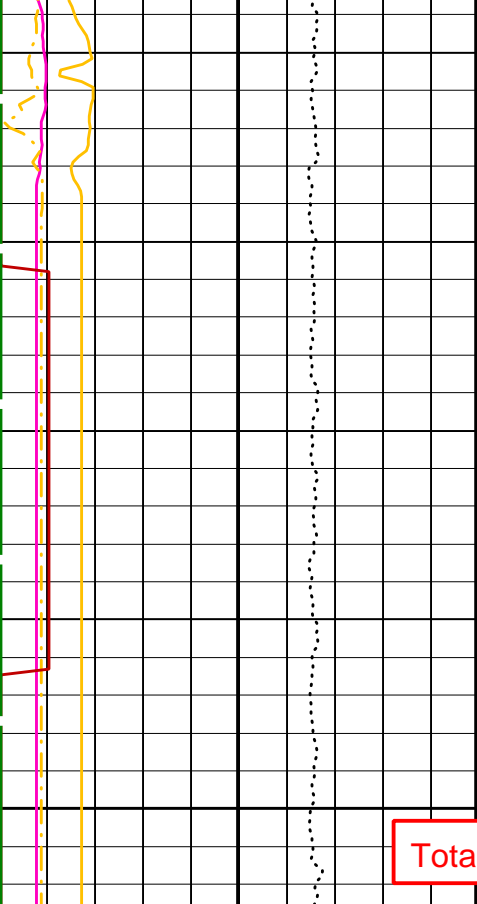
1800

1825

1850

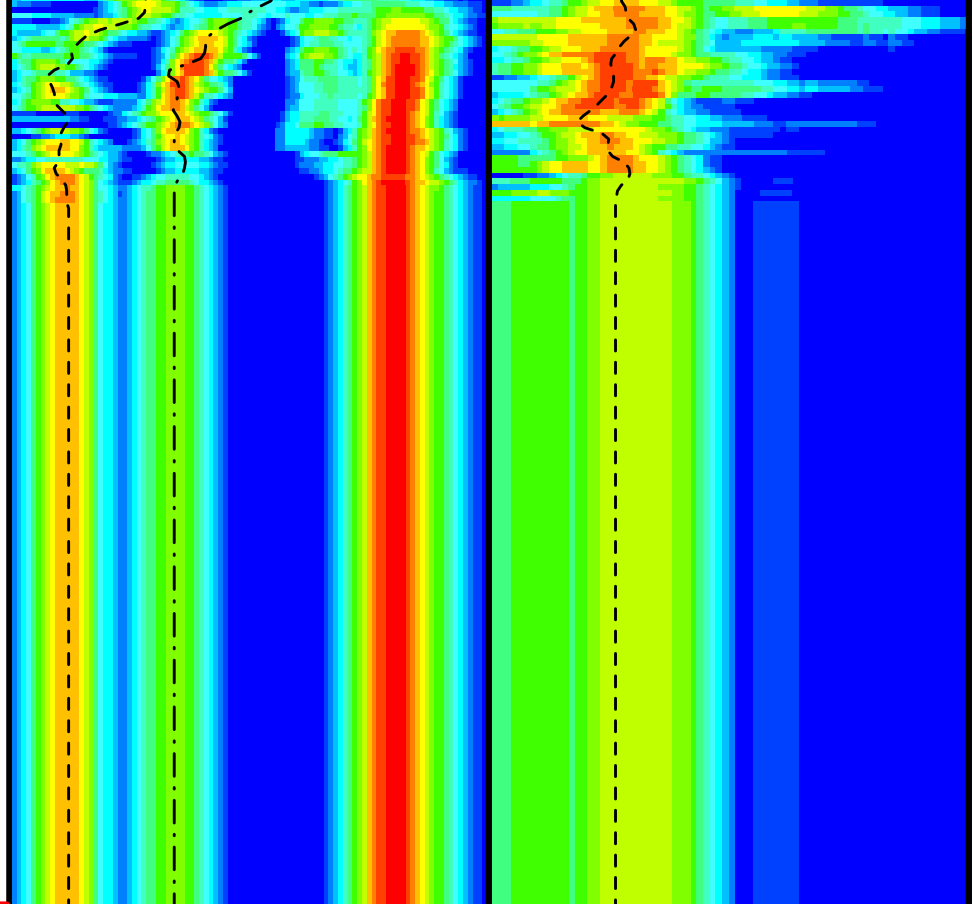






1875

Total Depth



Gamma Ray (GR) (GAPI)	0	50
--------------------------	---	----

Tension (TENS) (LBF)	10000	0
-------------------------	-------	---

Peak Coherence / RA - Lower Dipole (CHR1)	0	10
--	---	----

Peak Coherence / RA - P & S Comp (CHRP)	0	10
--	---	----

Peak Coherence / RA - P & S Shear (CHRS)	-1	9
---	----	---

Waveform Data Copy Indicator 4 - Monopole P&S (WCI4)	0	10
---	---	----

Delta-T Comp / RA - P & S (DTRP)	40	240
----------------------------------	----	-----

Delta-T Shear / RA - Lower Dipole (DT1R)	60	360
---	----	-----

Delta-T Shear / RA - P & S (DTRS)	40	240
-----------------------------------	----	-----

Min	Amplitude	Max
Rec.Array L.Dipole Slow Proj. CVDL (SPR1)		
60		360

Min	Amplitude	Max
Rec.Array P&S Slow Proj. CVDL (SPR4)		
40		240

PIP SUMMARY

Time Mark Every 60 S

Parameters

DLIS Name	Description	Value
DSST-B:	Dipole Shear Imager - B	
BHS	Borehole Status	OPEN
CASF	Label Casing Function - Monopole P&S	50
COLL	Label Slowness Lower Limit - Monopole P&S Compressional	40 US/F
COUL	Label Slowness Upper Limit - Monopole P&S Compressional	180 US/F
DDE1	Digitizing Delay 1	0 US
DDE4	Digitizing Delay 4	0 US
DDEX	Digitizing Delay X	0 US
DLCS	Label Compressional Source - Dipole Shear	USE

DECS	Label Compressional Source - Dipole Shear	03E	
DSHL	Label Slowness Lower Limit - Dipole Shear	60	US/F
DSHU	Label Slowness Upper Limit - Dipole Shear	360	US/F
DSI1	Digitizer Sample Interval 1	10	US
DSI4	Digitizer Sample Interval 4	10	US
DSIX	Digitizer Sample Interval X	40	US
DTCS	Compressional Delta-T Source for DTCS Channel	PS_COMP	
DTF	Delta-T Fluid	189	US/F
DWC1	Digitizer Word Count 1	512	
DWC4	Digitizer Word Count 4	512	
DWCX	Digitizer Word Count X	512	
FILG	Label Fill Gap Control - Monopole P&S	COMP_SHEAR	
LFC	Label Formation Character - Monopole P&S	DYNAMIC	
LTXG	Lower Dipole Transmitter Geometry	156	IN
MCS	Mean Casing Slowness	57	US/F
MTXG	Monopole Transmitter Geometry	186	IN
NWI1	Number Waveform Items 1	0	
NWI4	Number Waveform Items 4	8	
NWIX	Number Waveform Items X	32	
RSMN	Label Shear/Compressional Minimum Ratio - Monopole P&S	1.4	
RSMX	Label Shear/Compressional Maximum Ratio - Monopole P&S	2.12	
RX1G	Receiver 1 Geometry	294	IN
RX2G	Receiver 2 Geometry	300	IN
RX3G	Receiver 3 Geometry	306	IN
RX4G	Receiver 4 Geometry	312	IN
RX5G	Receiver 5 Geometry	318	IN
RX6G	Receiver 6 Geometry	324	IN
RX7G	Receiver 7 Geometry	330	IN
RX8G	Receiver 8 Geometry	336	IN
SAM1	DSST Sonic Acquisition Mode 1 - Lower Dipole Mode	OFF	
SAM4	DSST Sonic Acquisition Mode 4 - High Frequency Monopole Mode for P&S	EVEN	
SAMX	DSST Sonic Acquisition Mode X - Both Dipoles or Monopole Mode for Expert	BCR	
SAS1	STC Sonic Array Status - Lower Dipole	255	
SAS4	STC Sonic Array Status - Monopole P&S	255	
SBO1	STC Search Band Offset - Lower Dipole	3000	US
SBO4	STC Search Band Offset - Monopole P&S	500	US
SBR4	STC Baseline Removal - Monopole P&S	ON	
SBW1	STC Search Bandwidth - Lower Dipole	8000	US
SBW4	STC Search Bandwidth - Monopole P&S	2000	US
SFC1	STC Formation Character - Lower Dipole	SELECTABLE	
SFC4	STC Formation Character - Monopole P&S	SELECTABLE	
SFM1	STC Filter - Lower Dipole	B1-5K	
SFM4	STC Filter - Monopole P&S	B3-20K	
SHLL	Label Slowness Lower Limit - Monopole P&S Shear	75	US/F
SHUL	Label Slowness Upper Limit - Monopole P&S Shear	180	US/F
SLL1	STC Slowness Lower Limit - Lower Dipole	60	US/F
SLL4	STC Slowness Lower Limit - Monopole P&S	40	US/F
SST1	STC Slowness Step - Lower Dipole	4	US/F
SST4	STC Slowness Step - Monopole P&S	2	US/F
SSW1	STC Source Waveform - Lower Dipole	EVEN_IN_SAMX	
SSW4	STC Source Waveform - Monopole P&S	WF_SAM4	
STLL	Label Slowness Lower Limit - Monopole Stoneley	180	US/F
STUL	Label Slowness Upper Limit - Monopole Stoneley	780	US/F
SUL1	STC Slowness Upper Limit - Lower Dipole	360	US/F
SUL4	STC Slowness Upper Limit - Monopole P&S	240	US/F
SWD1	STC Slowness Width - Lower Dipole	40	US/F
SWD4	STC Slowness Width - Monopole P&S	10	US/F
TBF1	STC Time for Baseline Fill - Lower Dipole	0	US
TBF4	STC Time for Baseline Fill - Monopole P&S	300	US
TLL1	STC Time Lower Limit - Lower Dipole	600	US
TLL4	STC Time Lower Limit - Monopole P&S	150	US
TST1	STC Time Step - Lower Dipole	200	US
TST4	STC Time Step - Monopole P&S	50	US
TUL1	STC Time Upper Limit - Lower Dipole	11140	US
TUL4	STC Time Upper Limit - Monopole P&S	3660	US
TWD1	STC Time Width - Lower Dipole	2000	US
TWD4	STC Time Width - Monopole P&S	1000	US
TWI1	STC Integration Time Window - Lower Dipole	1600	US
TWI4	STC Integration Time Window - Monopole P&S	500	US
TWSX	Transmitter Waveform Select X	0	
WFM4	Waveform Mode 4	W1	
BHS	SGT-N: Scintillation Gamma-Ray - N Borehole Status	OPEN	
	System and Miscellaneous		
DO	Depth Offset for Playback	0.0	M
PP	Playback Processing	NORMAL	

OP System Version: 12C0-301

MCM

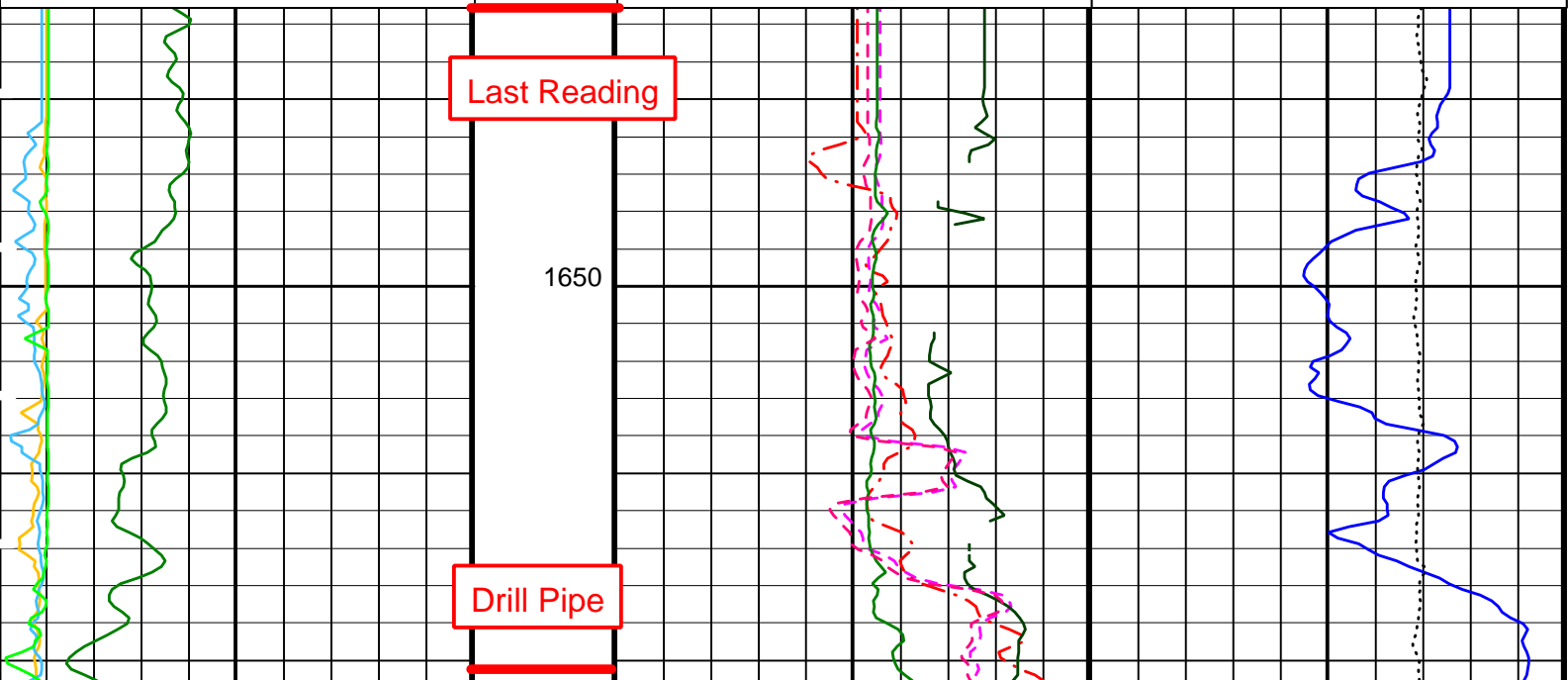
Input DLIS Files						
DEFAULT	FMS_DSI_022LUP	FN:20	PRODUCER	21-Apr-2005 02:40	1877.6 M	1642.1 M
Output DLIS Files						
DEFAULT	FMS_DSI_042PUP	FN:35	PRODUCER	23-Apr-2005 10:07		

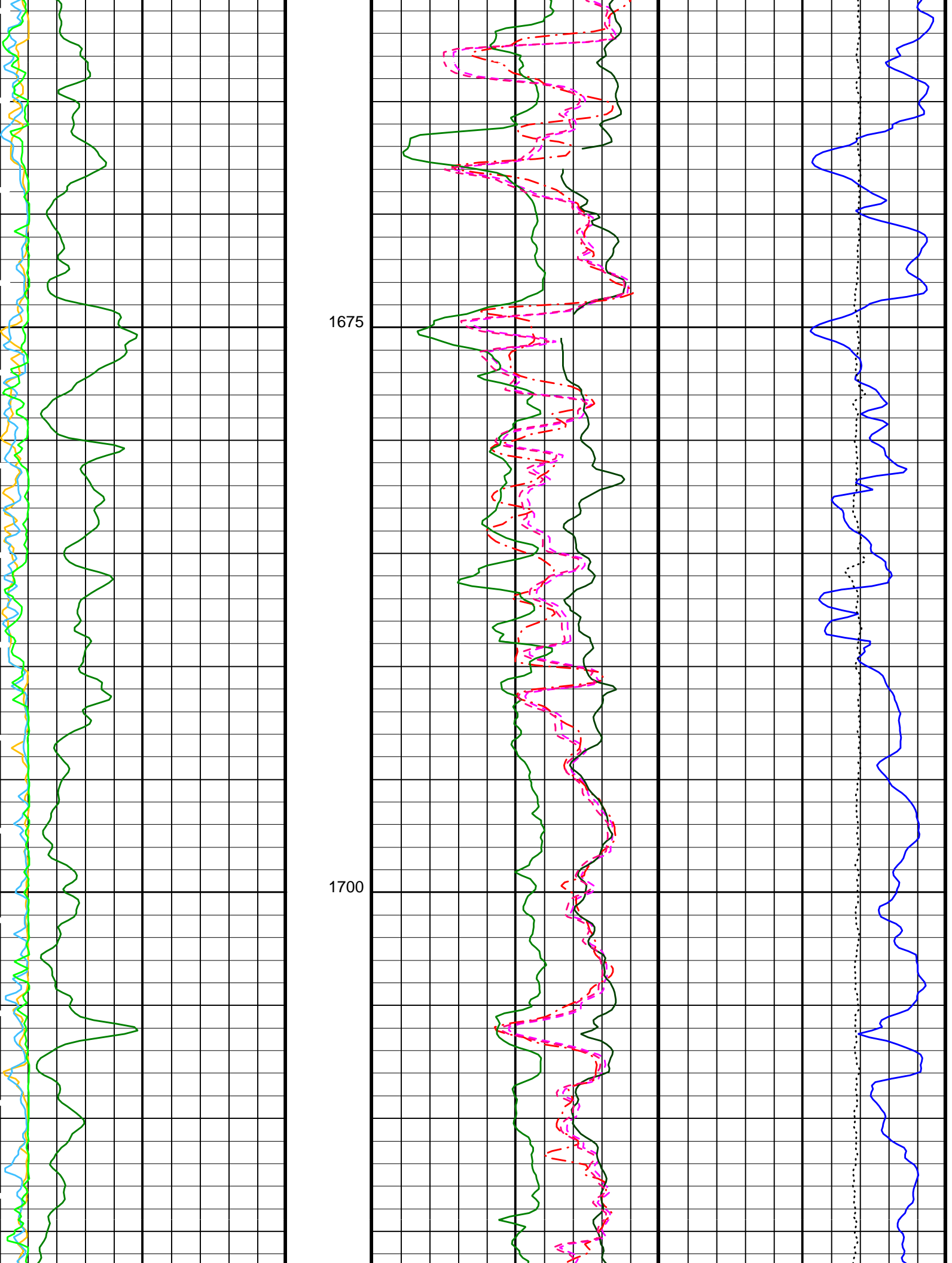
Input DLIS Files						
DEFAULT	FMS_DSI_022LUP	FN:20	PRODUCER	21-Apr-2005 02:40	1877.6 M	1642.1 M
Output DLIS Files						
DEFAULT	FMS_DSI_042PUP	FN:35	PRODUCER	23-Apr-2005 10:07	1877.6 M	1642.6 M

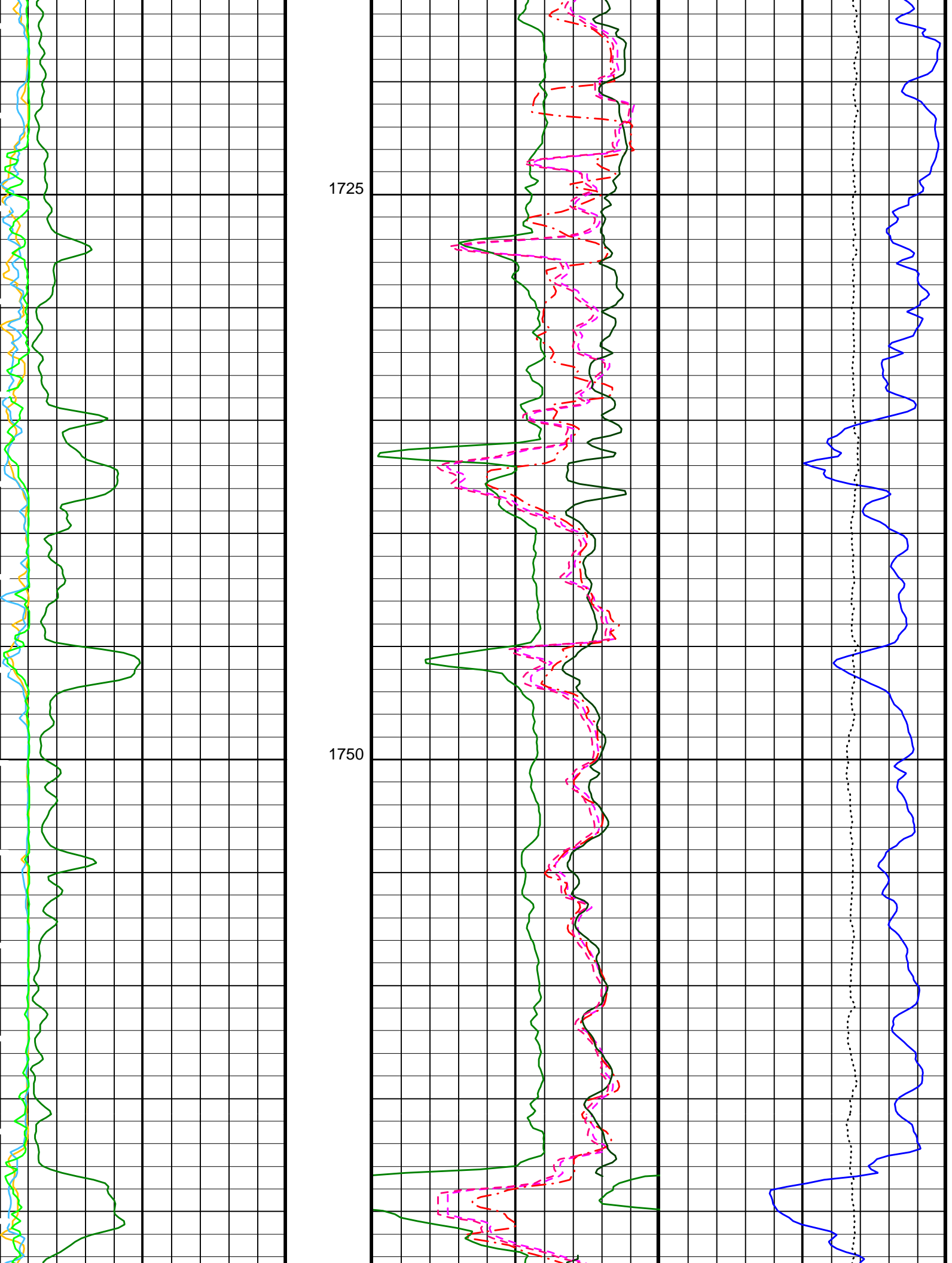
OP System Version: 12C0-301						
MCM						
MEST-B	12C0-301		DTA-A	12C0-301		
DSST-B	12C0-301		SGT-N	12C0-301		
DTC-H	12C0-301					

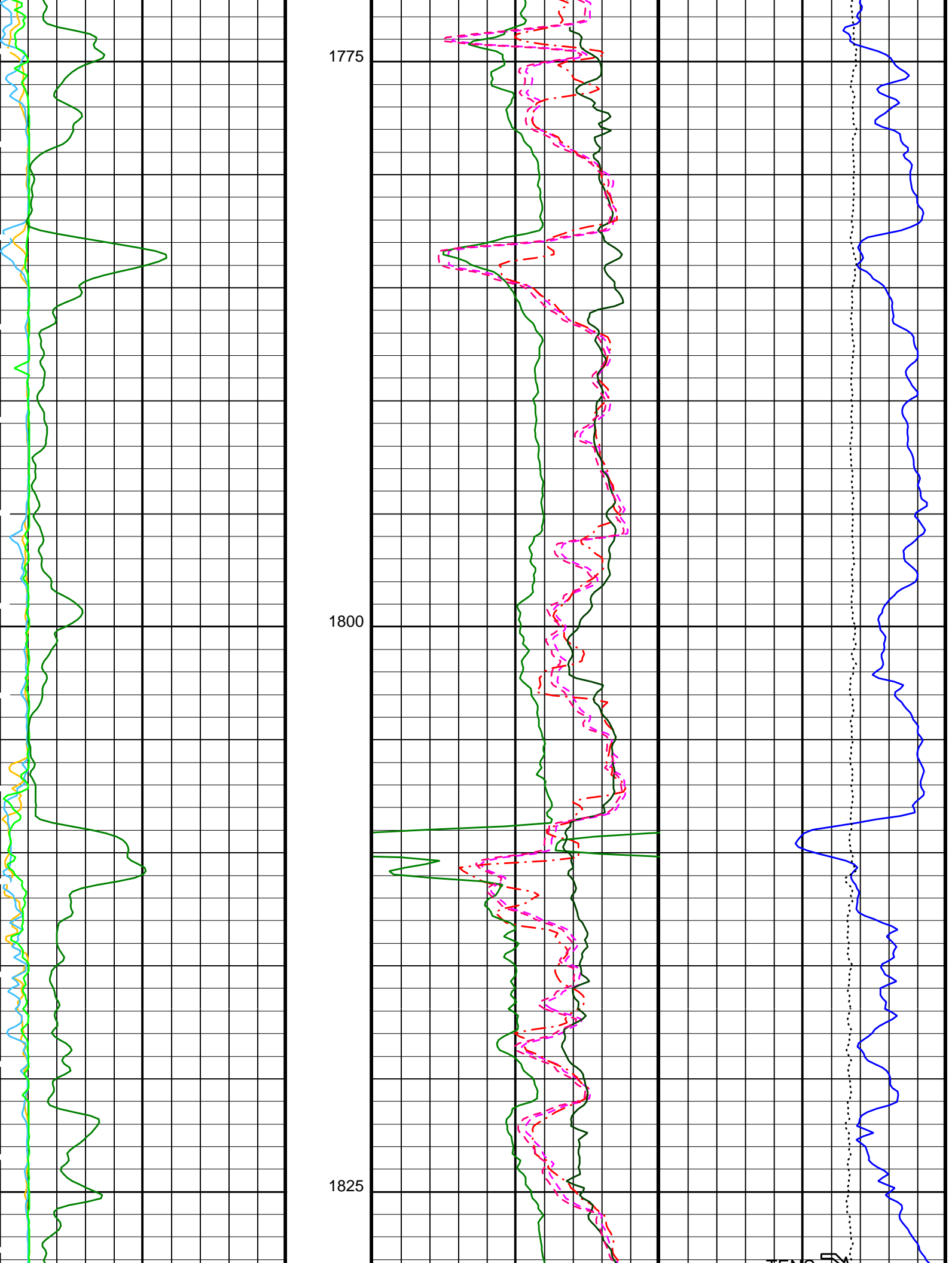
PIP SUMMARY

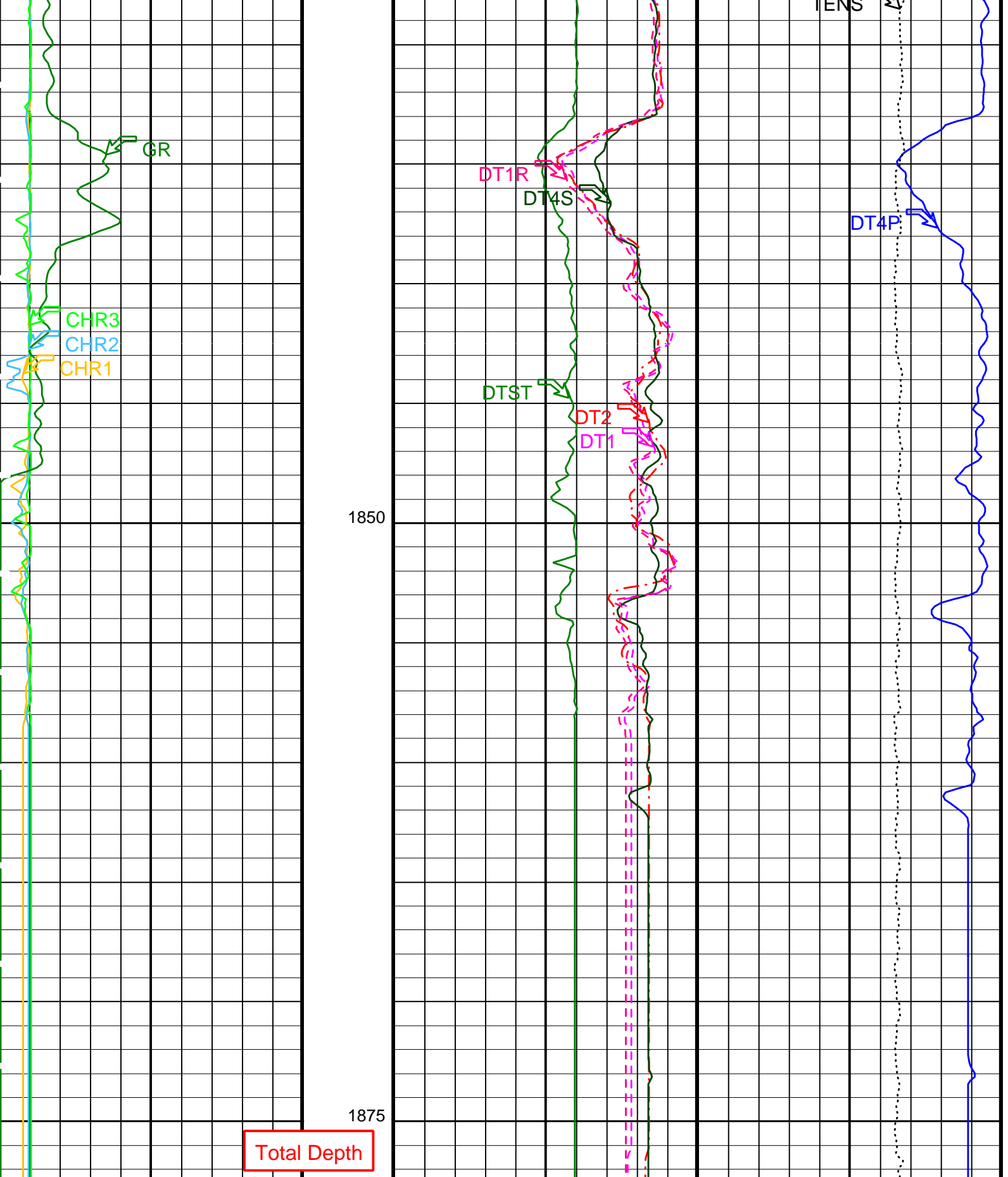
Time Mark Every 60 S			Delta-T Shear / RA - Lower Dipole (DT1R) (US/F)		Tension (TENS) (LBF)	
Peak Coherence / RA - Upper Dipole (CHR2)	440	40	Delta-T Shear - P & S (DT4S)		10000	
0 (---) 10	440	40	Delta-T Stoneley (DTST)		0	
Peak Coherence / RA - Lower Dipole (CHR1)			440 (US/F) 40			
0 (---) 10			Delta-T Shear - Upper Dipole (DT2)			
Gamma Ray (GR) (GAPI)	50		440 (US/F) 40			
Peak Coherence / RA - Stoneley (CHR3)			Delta-T Shear - Lower Dipole (DT1)		Delta-T Comp - P & S (DT4P)	
0 (---) 10			440 (US/F) 40		240 (US/F) 40	



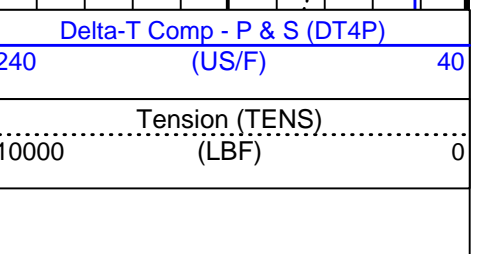
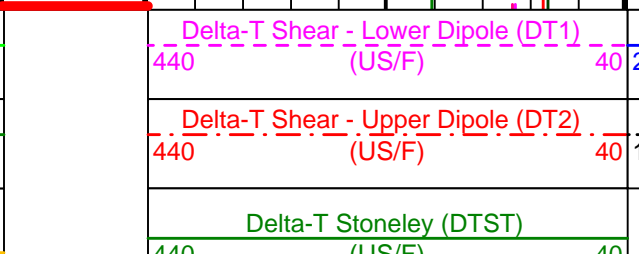
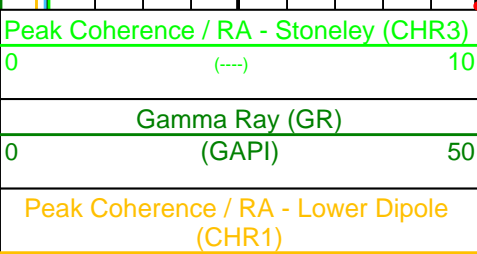








Total Depth



0	(---)	10
Peak Coherence / RA - Upper Dipole (CHR2)		
0	(---)	10

440	(US/F)	40
Delta-T Shear - P & S (DT4S)		
440	(US/F)	40
Delta-T Shear / RA - Lower Dipole (DT1R)		
440	(US/F)	40

PIP SUMMARY

▶ Time Mark Every 60 S

Parameters

DLIS Name	Description	Value
DSST-B: Dipole Shear Imager - B		
DLCS	Label Compressional Source - Dipole Shear	USE
DSHL	Label Slowness Lower Limit - Dipole Shear	60 US/F
DSHU	Label Slowness Upper Limit - Dipole Shear	360 US/F
DTCS	Compressional Delta-T Source for DT4S Channel	PS_COMP
LTXG	Lower Dipole Transmitter Geometry	156 IN
MTXG	Monopole Transmitter Geometry	186 IN
NWI1	Number Waveform Items 1	0
NWI2	Number Waveform Items 2	0
NWI3	Number Waveform Items 3	8
NWIX	Number Waveform Items X	32
RX1G	Receiver 1 Geometry	294 IN
RX2G	Receiver 2 Geometry	300 IN
RX3G	Receiver 3 Geometry	306 IN
RX4G	Receiver 4 Geometry	312 IN
RX5G	Receiver 5 Geometry	318 IN
RX6G	Receiver 6 Geometry	324 IN
RX7G	Receiver 7 Geometry	330 IN
RX8G	Receiver 8 Geometry	336 IN
SAS1	STC Sonic Array Status - Lower Dipole	255
SAS2	STC Sonic Array Status - Upper Dipole	255
SAS3	STC Sonic Array Status - Monopole Stoneley	255
SFM1	STC Filter - Lower Dipole	B1-5K
SFM2	STC Filter - Upper Dipole	B1-5K
SSW1	STC Source Waveform - Lower Dipole	EVEN_IN_SAMX
SSW2	STC Source Waveform - Upper Dipole	ODD_IN_SAMX
SSW3	STC Source Waveform - Monopole Stoneley	WF_SAM3
STLL	Label Slowness Lower Limit - Monopole Stoneley	180 US/F
STUL	Label Slowness Upper Limit - Monopole Stoneley	780 US/F
TWI1	STC Integration Time Window - Lower Dipole	1600 US
TWI2	STC Integration Time Window - Upper Dipole	1600 US
TWI3	STC Integration Time Window - Monopole Stoneley	1600 US
UTXG	Upper Dipole Transmitter Geometry	162 IN
System and Miscellaneous		
DO	Depth Offset for Playback	0.0 M
PP	Playback Processing	NORMAL

Format: DSI\_Field\_Print Vertical Scale: 1:200 Graphics File Created: 23-Apr-2005 10:08

OP System Version: 12C0-301  
MCM

MEST-B	12C0-301	DTA-A	12C0-301
DSST-B	12C0-301	SGT-N	12C0-301
DTC-H	12C0-301		

Input DLIS Files

DEFAULT	FMS_DSI_022LUP	FN:20	PRODUCER	21-Apr-2005 02:40	1877.6 M	1642.1 M
---------	----------------	-------	----------	-------------------	----------	----------

Output DLIS Files

DEFAULT	FMS_DSI_042PUP	FN:35	PRODUCER	23-Apr-2005 10:07
---------	----------------	-------	----------	-------------------



# MAXIS Field Log

## Input DLIS Files

DEFAULT      FMS\_DSI\_023LUP      FN:21    PRODUCER    21-Apr-2005 04:05      1728.8 M      1615.7 M

## Output DLIS Files

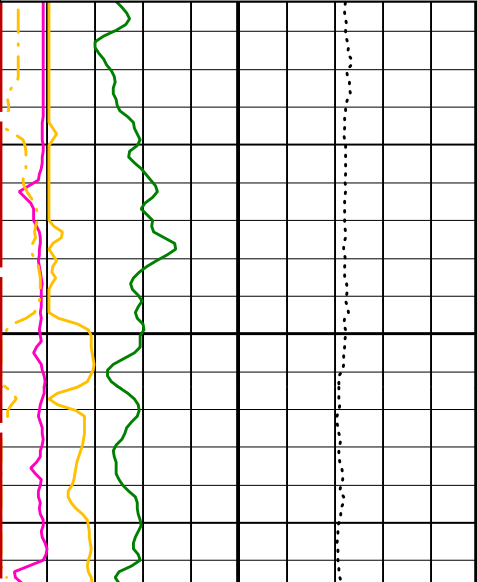
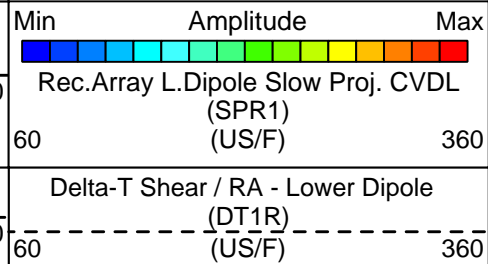
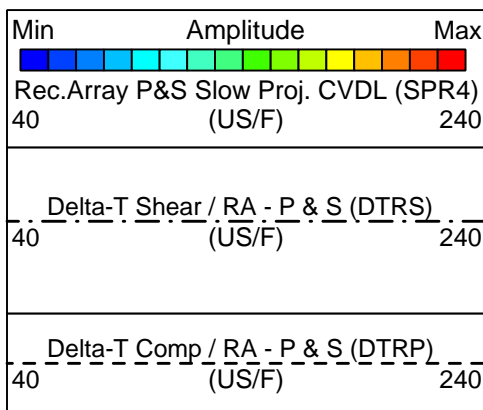
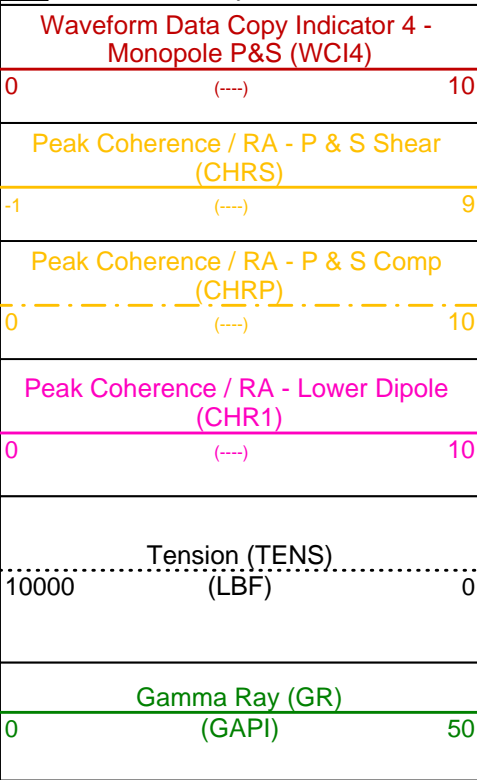
DEFAULT      FMS\_DSI\_043PUP      FN:36    PRODUCER    23-Apr-2005 10:08      1728.8 M      1616.2 M

## OP System Version: 12C0-301 MCM

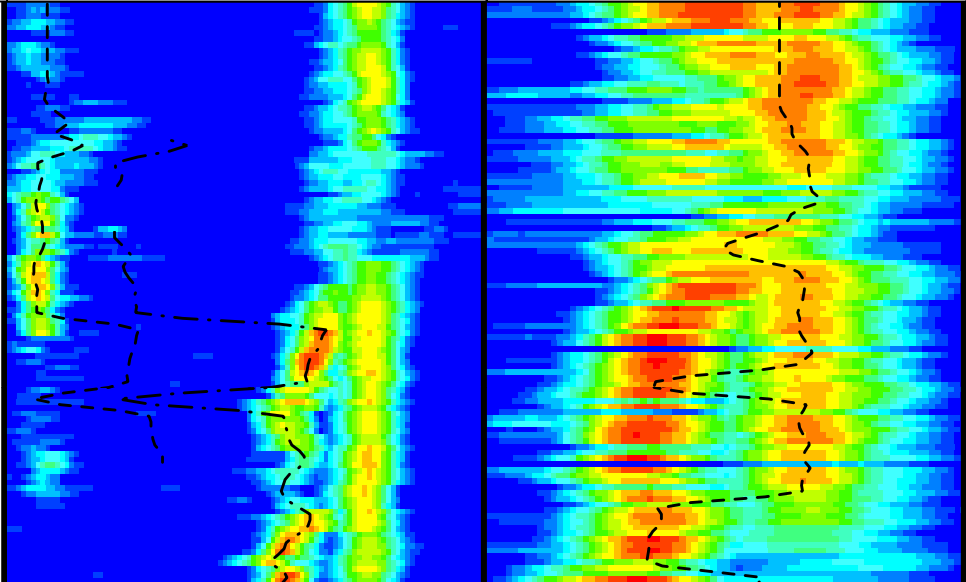
MEST-B	12C0-301	DTA-A	12C0-301
DSST-B	12C0-301	SGT-N	12C0-301
DTC-H	12C0-301		

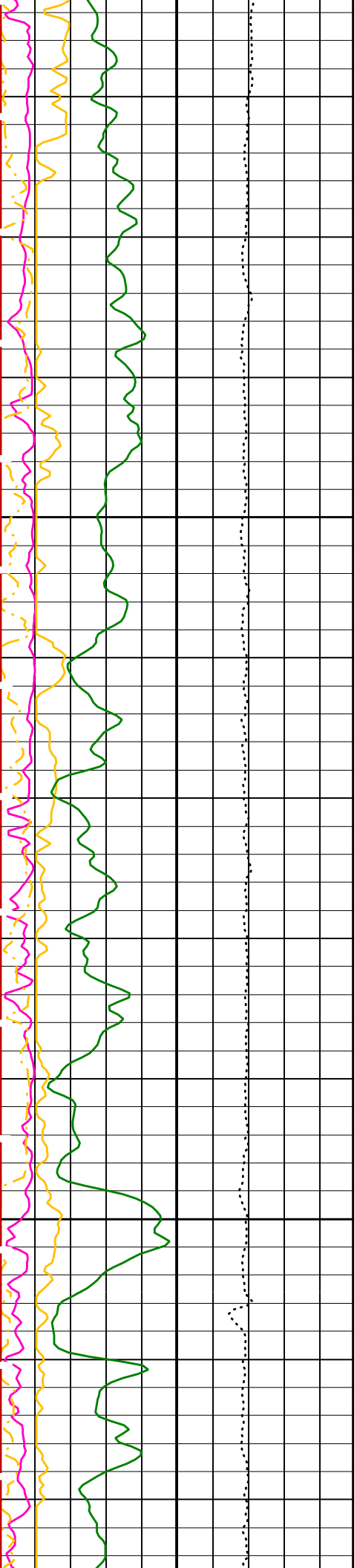
### PIP SUMMARY

Time Mark Every 60 S



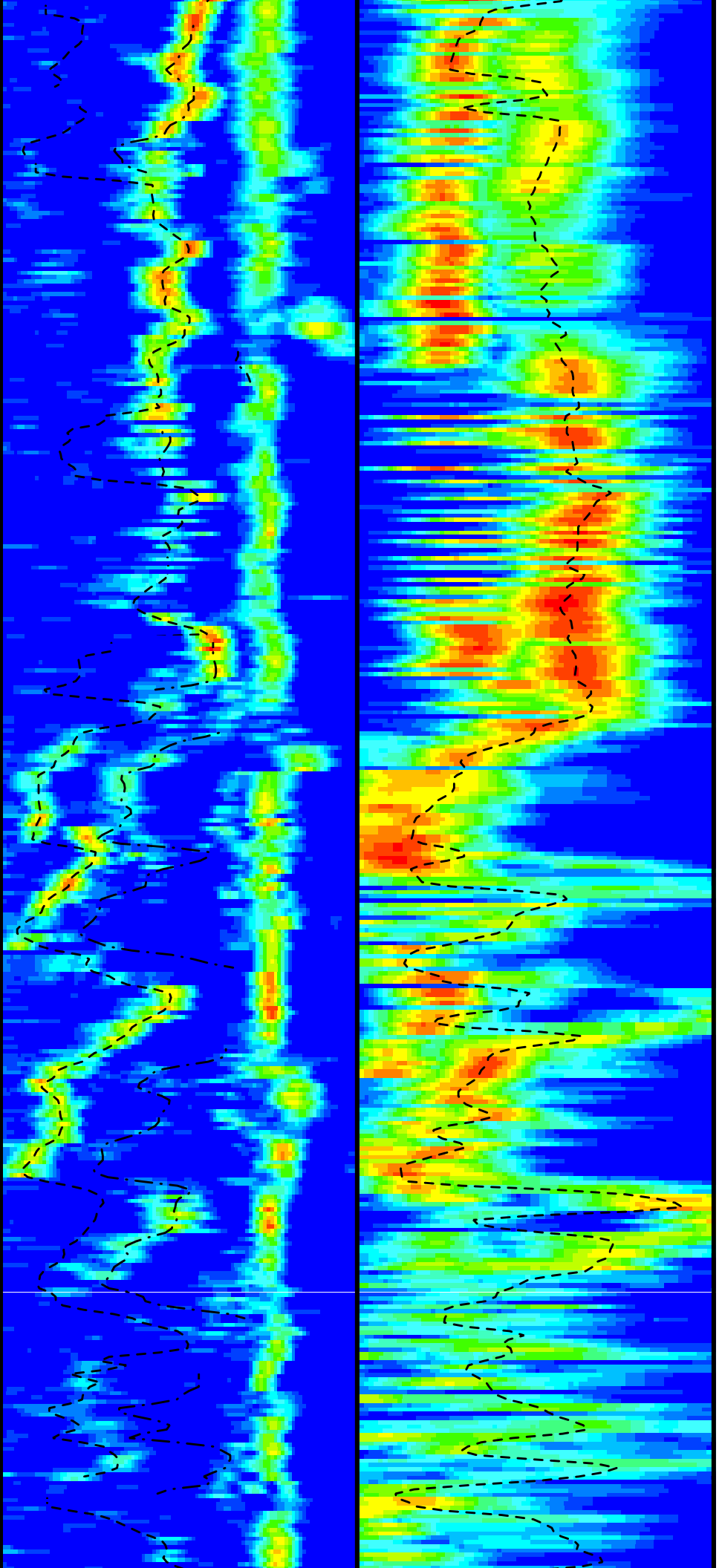
1625

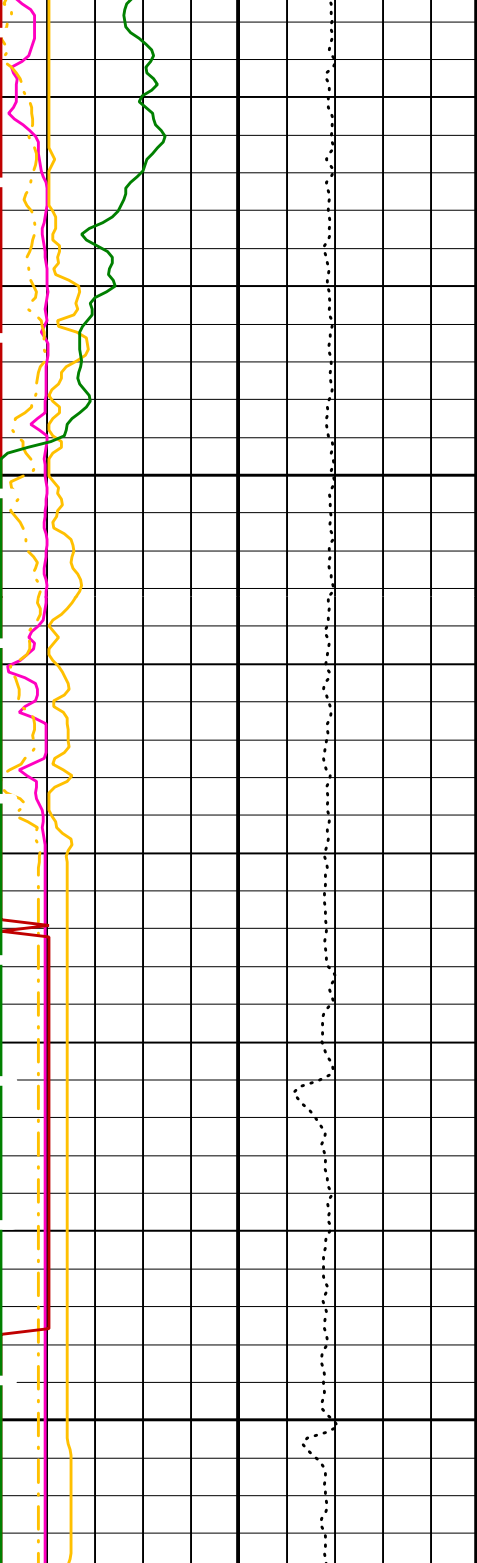




1650

1675





1700

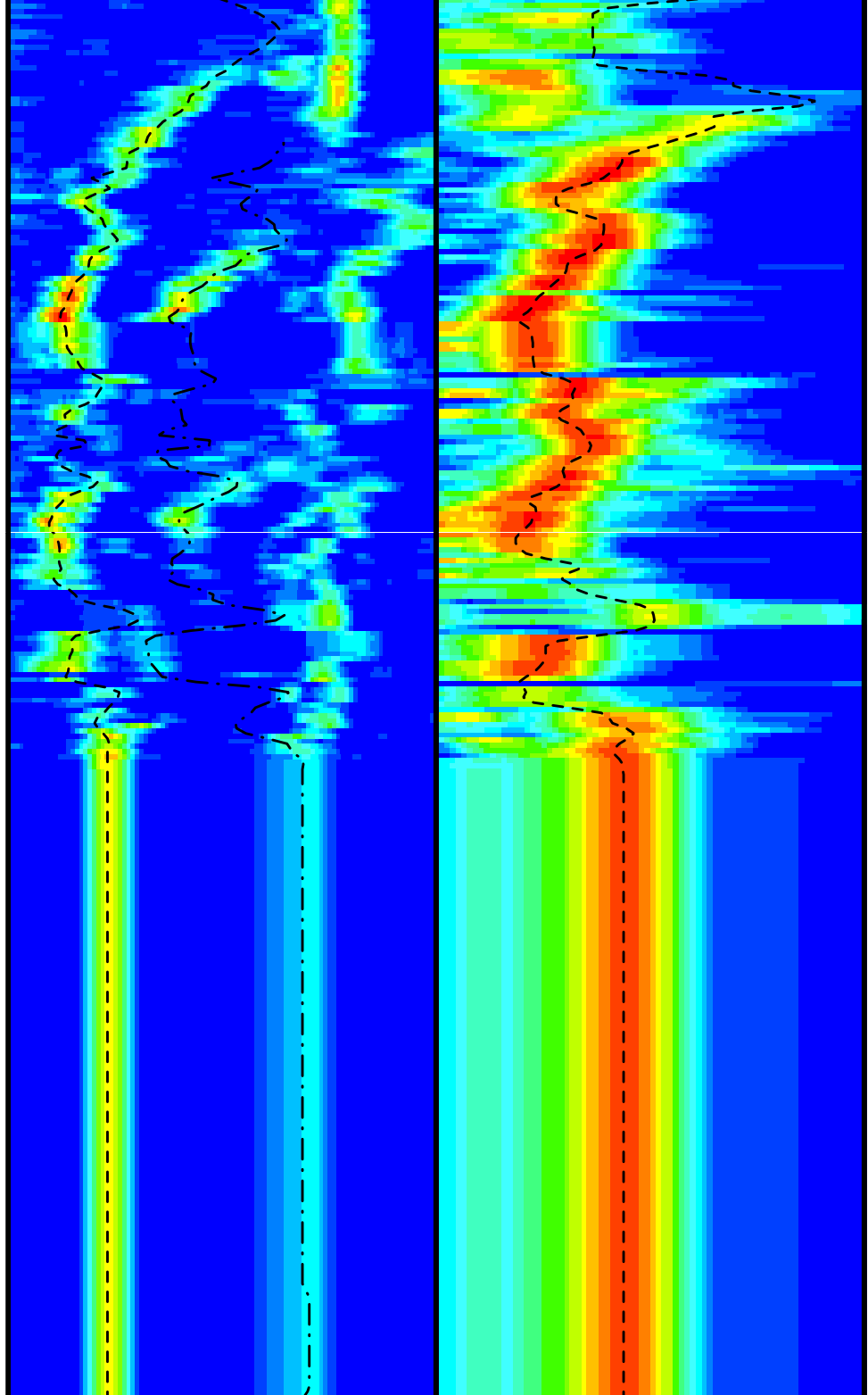
1725

Gamma Ray (GR)  
(GAPI) 0 50

Tension (TENS)  
(LBF) 10000 0

Peak Coherence / RA - Lower Dipole  
(CHR1) 0 10

Peak Coherence / RA - P & S Comp  
(CHRP) 0 10



Delta-T Comp / RA - P & S (DTRP)  
(US/F) 40 240

Delta-T Shear / RA - Lower Dipole  
(DT1R) (US/F) 60 360

Delta-T Shear / RA - P & S (DTRS)  
(US/F) 40 240

Min Amplitude Max  
Rec.Array L.Dipole Slow Proj. CVDL  
(SPR1) (US/F) 60 360

Min Amplitude Max  
Rec.Array P&S Slow Proj. CVDL (SPR4)  
(US/F) 40 240

Peak Coherence / RA - P & S Shear (CHRS)	
-1 (---) 9	
Waveform Data Copy Indicator 4 - Monopole P&S (WCI4)	
0 (---) 10	

PIP SUMMARY

Time Mark Every 60 S

Parameters

DLIS Name	Description	Value	
	DSST-B: Dipole Shear Imager - B		
BHS	Borehole Status	OPEN	
CASF	Label Casing Function - Monopole P&S	50	
COLL	Label Slowness Lower Limit - Monopole P&S Compressional	40	US/F
COUL	Label Slowness Upper Limit - Monopole P&S Compressional	180	US/F
DDE1	Digitizing Delay 1	0	US
DDE4	Digitizing Delay 4	0	US
DDEX	Digitizing Delay X	0	US
DLCS	Label Compressional Source - Dipole Shear	USE	
DSHL	Label Slowness Lower Limit - Dipole Shear	60	US/F
DSHU	Label Slowness Upper Limit - Dipole Shear	360	US/F
DSI1	Digitizer Sample Interval 1	10	US
DSI4	Digitizer Sample Interval 4	10	US
DSIX	Digitizer Sample Interval X	40	US
DTCS	Compressional Delta-T Source for DTCO Channel	PS_COMP	
DTF	Delta-T Fluid	189	US/F
DWC1	Digitizer Word Count 1	512	
DWC4	Digitizer Word Count 4	512	
DWCX	Digitizer Word Count X	512	
FILG	Label Fill Gap Control - Monopole P&S	COMP_SHEAR	
LFC	Label Formation Character - Monopole P&S	DYNAMIC	
LTXG	Lower Dipole Transmitter Geometry	156	IN
MCS	Mean Casing Slowness	57	US/F
MTXG	Monopole Transmitter Geometry	186	IN
NWI1	Number Waveform Items 1	0	
NWI4	Number Waveform Items 4	8	
NWIX	Number Waveform Items X	32	
RSMN	Label Shear/Compressional Minimum Ratio - Monopole P&S	1.4	
RSMX	Label Shear/Compressional Maximum Ratio - Monopole P&S	2.12	
RX1G	Receiver 1 Geometry	294	IN
RX2G	Receiver 2 Geometry	300	IN
RX3G	Receiver 3 Geometry	306	IN
RX4G	Receiver 4 Geometry	312	IN
RX5G	Receiver 5 Geometry	318	IN
RX6G	Receiver 6 Geometry	324	IN
RX7G	Receiver 7 Geometry	330	IN
RX8G	Receiver 8 Geometry	336	IN
SAM1	DSST Sonic Acquisition Mode 1 - Lower Dipole Mode	OFF	
SAM4	DSST Sonic Acquisition Mode 4 - High Frequency Monopole Mode for P&S	EVEN	
SAMX	DSST Sonic Acquisition Mode X - Both Dipoles or Monopole Mode for Expert	BCR	
SAS1	STC Sonic Array Status - Lower Dipole	255	
SAS4	STC Sonic Array Status - Monopole P&S	255	
SBO1	STC Search Band Offset - Lower Dipole	3000	US
SBO4	STC Search Band Offset - Monopole P&S	500	US
SBR4	STC Baseline Removal - Monopole P&S	ON	
SBW1	STC Search Bandwidth - Lower Dipole	8000	US
SBW4	STC Search Bandwidth - Monopole P&S	2000	US
SFC1	STC Formation Character - Lower Dipole	SELECTABLE	
SFC4	STC Formation Character - Monopole P&S	SELECTABLE	
SFM1	STC Filter - Lower Dipole	B1-5K	
SFM4	STC Filter - Monopole P&S	B3-20K	
SHLL	Label Slowness Lower Limit - Monopole P&S Shear	75	US/F
SHUL	Label Slowness Upper Limit - Monopole P&S Shear	180	US/F
SLL1	STC Slowness Lower Limit - Lower Dipole	60	US/F
SLL4	STC Slowness Lower Limit - Monopole P&S	40	US/F
SST1	STC Slowness Step - Lower Dipole	4	US/F
SST4	STC Slowness Step - Monopole P&S	2	US/F
SSW1	STC Source Waveform - Lower Dipole	EVEN_IN_SAMX	
SSW4	STC Source Waveform - Monopole P&S	WF_SAM4	
STLL	Label Slowness Lower Limit - Monopole Stoneley	180	US/F
STUL	Label Slowness Upper Limit - Monopole Stoneley	780	US/F
SUL1	STC Slowness Upper Limit - Lower Dipole	360	US/F
SUL4	STC Slowness Upper Limit - Monopole P&S	240	US/F
SWD1	STC Slowness Width - Lower Dipole	40	US/F
SWD4	STC Slowness Width - Monopole P&S	10	US/F

TBF1	STC Time for Baseline Fill - Lower Dipole	0	US
TBF4	STC Time for Baseline Fill - Monopole P&S	300	US
TLL1	STC Time Lower Limit - Lower Dipole	600	US
TLL4	STC Time Lower Limit - Monopole P&S	150	US
TST1	STC Time Step - Lower Dipole	200	US
TST4	STC Time Step - Monopole P&S	50	US
TUL1	STC Time Upper Limit - Lower Dipole	11140	US
TUL4	STC Time Upper Limit - Monopole P&S	3660	US
TWD1	STC Time Width - Lower Dipole	2000	US
TWD4	STC Time Width - Monopole P&S	1000	US
TWI1	STC Integration Time Window - Lower Dipole	1600	US
TWI4	STC Integration Time Window - Monopole P&S	500	US
TWSX	Transmitter Waveform Select X	0	
WFM4	Waveform Mode 4	W1	
SGT-N:	Scintillation Gamma-Ray - N		
BHS	Borehole Status	OPEN	
	System and Miscellaneous		
DO	Depth Offset for Playback	0.0	M
PP	Playback Processing	NORMAL	

Format: DSST\_P\_S\_LOWER\_VDL\_COLOR Vertical Scale: 1:200 Graphics File Created: 23-Apr-2005 10:08

<b>OP System Version: 12C0-301</b>			
MCM			
MEST-B	12C0-301	DTA-A	12C0-301
DSST-B	12C0-301	SGT-N	12C0-301
DTC-H	12C0-301		

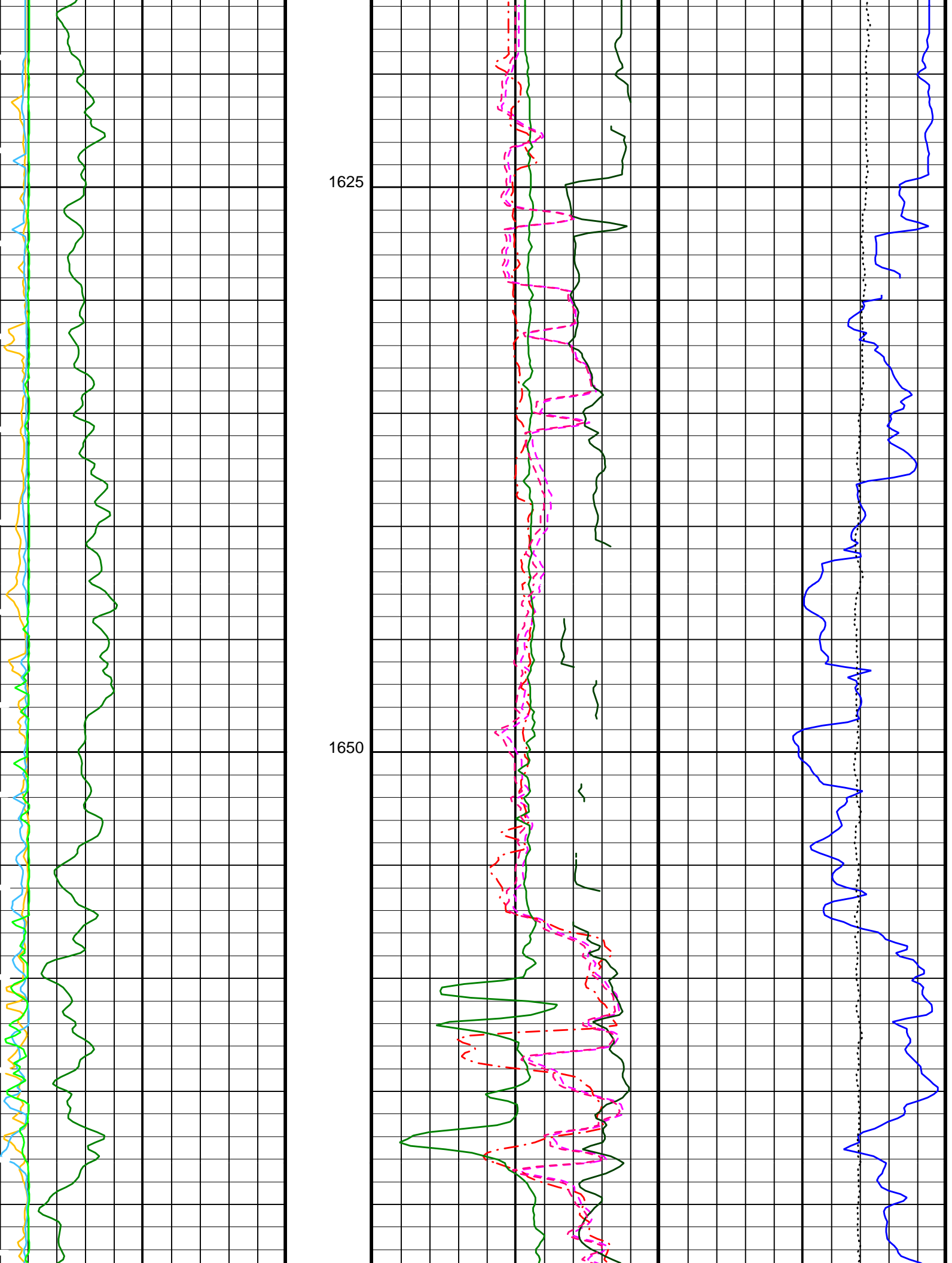
<b>Input DLIS Files</b>						
DEFAULT	FMS_DSI_023LUP	FN:21	PRODUCER	21-Apr-2005 04:05	1728.8 M	1615.7 M
<b>Output DLIS Files</b>						
DEFAULT	FMS_DSI_043PUP	FN:36	PRODUCER	23-Apr-2005 10:08		

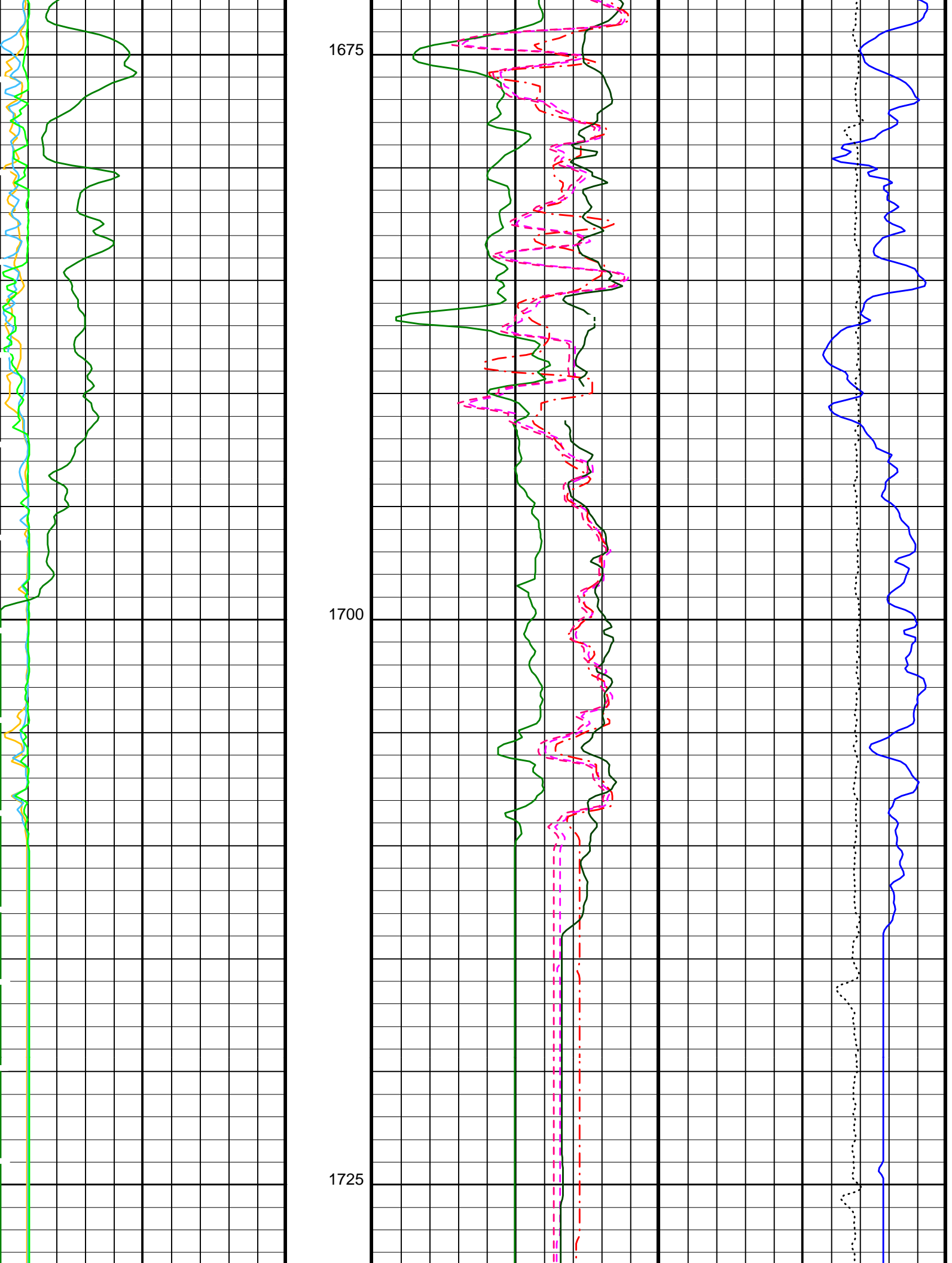
<b>Input DLIS Files</b>						
DEFAULT	FMS_DSI_023LUP	FN:21	PRODUCER	21-Apr-2005 04:05	1728.8 M	1615.7 M
<b>Output DLIS Files</b>						
DEFAULT	FMS_DSI_043PUP	FN:36	PRODUCER	23-Apr-2005 10:08	1728.8 M	1616.2 M

<b>OP System Version: 12C0-301</b>			
MCM			
MEST-B	12C0-301	DTA-A	12C0-301
DSST-B	12C0-301	SGT-N	12C0-301
DTC-H	12C0-301		

PIP SUMMARY

Time Mark Every 60 S			
	Delta-T Shear / RA - Lower Dipole (DT1R) 440 (US/F) 40		
Peak Coherence / RA - Upper Dipole (CHR2) 0 (---) 10	Delta-T Shear - P & S (DT4S) 440 (US/F) 40		
Peak Coherence / RA - Lower Dipole (CHR1) 0 (---) 10	Delta-T Stoneley (DTST) 440 (US/F) 40		
Gamma Ray (GR) (GAPI) 50	Delta-T Shear - Upper Dipole (DT2) 440 (US/F) 40	Tension (TENS) 10000 (LBF) 0	
Peak Coherence / RA - Stoneley (CHR3) 0 (---) 10	Delta-T Shear - Lower Dipole (DT1) 440 (US/F) 40	Delta-T Comp - P & S (DT4P) 240 (US/F) 40	





<b>Peak Coherence / RA - Stoneley (CHR3)</b>		<b>Delta-T Shear - Lower Dipole (DT1)</b>		<b>Delta-T Comp - P &amp; S (DT4P)</b>	
0	(---) 10	440	(US/F) 40	240	(US/F) 40
<b>Gamma Ray (GR)</b>		<b>Delta-T Shear - Upper Dipole (DT2)</b>		<b>Tension (TENS)</b>	
0	(GAPI) 50	440	(US/F) 40	10000	(LBF) 0
<b>Peak Coherence / RA - Lower Dipole (CHR1)</b>		<b>Delta-T Stoneley (DTST)</b>			
0	(---) 10	440	(US/F) 40		
<b>Peak Coherence / RA - Upper Dipole (CHR2)</b>		<b>Delta-T Shear - P &amp; S (DT4S)</b>			
0	(---) 10	440	(US/F) 40		
		<b>Delta-T Shear / RA - Lower Dipole (DT1R)</b>			
		440	(US/F) 40		

PIP SUMMARY

▶ Time Mark Every 60 S

Parameters

DLIS Name	Description	Value	
DSST-B: Dipole Shear Imager - B			
DLCS	Label Compressional Source - Dipole Shear	USE	
DSHL	Label Slowness Lower Limit - Dipole Shear	60	US/F
DSHU	Label Slowness Upper Limit - Dipole Shear	360	US/F
DTCS	Compressional Delta-T Source for DTCO Channel	PS_COMP	
LTXG	Lower Dipole Transmitter Geometry	156	IN
MTXG	Monopole Transmitter Geometry	186	IN
NWI1	Number Waveform Items 1	0	
NWI2	Number Waveform Items 2	0	
NWI3	Number Waveform Items 3	8	
NWIX	Number Waveform Items X	32	
RX1G	Receiver 1 Geometry	294	IN
RX2G	Receiver 2 Geometry	300	IN
RX3G	Receiver 3 Geometry	306	IN
RX4G	Receiver 4 Geometry	312	IN
RX5G	Receiver 5 Geometry	318	IN
RX6G	Receiver 6 Geometry	324	IN
RX7G	Receiver 7 Geometry	330	IN
RX8G	Receiver 8 Geometry	336	IN
SAS1	STC Sonic Array Status - Lower Dipole	255	
SAS2	STC Sonic Array Status - Upper Dipole	255	
SAS3	STC Sonic Array Status - Monopole Stoneley	255	
SFM1	STC Filter - Lower Dipole	B1-5K	
SFM2	STC Filter - Upper Dipole	B1-5K	
SSW1	STC Source Waveform - Lower Dipole	EVEN_IN_SAMX	
SSW2	STC Source Waveform - Upper Dipole	ODD_IN_SAMX	
SSW3	STC Source Waveform - Monopole Stoneley	WF_SAM3	
STLL	Label Slowness Lower Limit - Monopole Stoneley	180	US/F
STUL	Label Slowness Upper Limit - Monopole Stoneley	780	US/F
TWI1	STC Integration Time Window - Lower Dipole	1600	US
TWI2	STC Integration Time Window - Upper Dipole	1600	US
TWI3	STC Integration Time Window - Monopole Stoneley	1600	US
UTXG	Upper Dipole Transmitter Geometry	162	IN
System and Miscellaneous			
DO	Depth Offset for Playback	0.0	M
PP	Playback Processing	NORMAL	

Format: DSI\_Field\_Print Vertical Scale: 1:200 Graphics File Created: 23-Apr-2005 10:08

OP System Version: 12C0-301  
MCM

MEST-B	12C0-301	DTA-A	12C0-301
DSST-B	12C0-301	SGT-N	12C0-301
DTC-H	12C0-301		

Input DLIS Files

DEFAULT	FMS_DSI_023LUP	FN:21	PRODUCER	21-Apr-2005 04:05	1728.8 M	1615.7 M
---------	----------------	-------	----------	-------------------	----------	----------

Output DLIS Files



Company: Lamont Doherty

**Schlumberger**

Well: IODP EXP 306 Site 642 E

Field: Voring Plateau

Country: Norway

Ocean: Atlantic Ocean

Dipole Sonic