

DISCLAIMER

THE USE OF AND RELIANCE UPON THIS RECORDED-DATA BY THE HEREIN NAMED COMPANY (AND ANY OF ITS AFFILIATES, PARTNERS, REPRESENTATIVES, AGENTS, CONSULTANTS AND EMPLOYEES) IS SUBJECT TO THE TERMS AND CONDITIONS AGREED UPON BETWEEN SCHLUMBERGER AND THE COMPANY, INCLUDING: (a) RESTRICTIONS ON USE OF THE RECORDED-DATA; (b) DISCLAIMERS AND WAIVERS OF WARRANTIES AND REPRESENTATIONS REGARDING COMPANY'S USE OF AND RELIANCE UPON THE RECORDED-DATA; AND (c) CUSTOMER'S FULL AND SOLE RESPONSIBILITY FOR ANY INFERENCE DRAWN OR DECISION MADE IN CONNECTION WITH THE USE OF THIS RECORDED-DATA.

OTHER SERVICES1
 OS1: DITE/HLDS/APS/HNGS
 OS2:
 OS3:
 OS4:
 OS5:

OTHER SERVICES2
 OS1:
 OS2:
 OS3:
 OS4:
 OS5:

REMARKS: RUN NUMBER 1
 Hole Cored with RCB in 1985
 All depths in Meters Below Rig Floor (MBRF).
 Hole not circulated
 Sea Floor Depth 1289 MBRF
 Total Depth Driller- 2518.4 MBRF
 Total Depth Logger- 1878 MBRF.
 Casing bottom Driller- 1660.5 MBRF
 Casing Bottom Logger- 1660 MBRF.
 Could not reach TD due to blockage.

REMARKS: RUN NUMBER 2

RUN 1
 SERVICE ORDER #:
 PROGRAM VERSION: 12C0-301
 FLUID LEVEL:

RUN 2
 SERVICE ORDER #:
 PROGRAM VERSION:
 FLUID LEVEL:

LOGGED INTERVAL	START	STOP


LOGGED INTERVAL	START	STOP

EQUIPMENT DESCRIPTION

RUN 1
 SURFACE EQUIPMENT
 GSR-U/Y 166
 WITM (DTS)-A

RUN 2

DOWNHOLE EQUIPMENT

LEH-QT		32.33
LEH-QT		
DTC-H	CTEM	31.16
ECH-KC	TelStatus	31.44
	ToolStatu	30.53
SGT-N	Gamma Ray	30.25
SGH-K 2448		30.53

SGC-TB 9582
SGD-TAA

AH-MCD
AH-MCD

28.85

DSST-B

SPAC-B 16
ECH-SD 16
SMDR-BD 8070
SSIJ-BA 10
SMDX-AA 66

26.73

PWF

11.18

AH-MCD
AH-MCD

11.18

DTA-A

ECH-KE
DTA-A 8231

8.90

MEST-B

MEAH-B 769
MEAC-A 875
MEPH-A 769
GPIC-A 840
MEPC-AB
MEDS-B 724

7.68

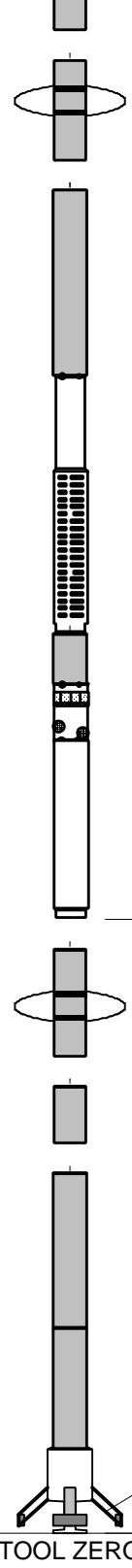
MEDR MEAC
MEPC MEDS-B
HV DF
Tension GPIT

0.46

0.00

TOOL ZERO

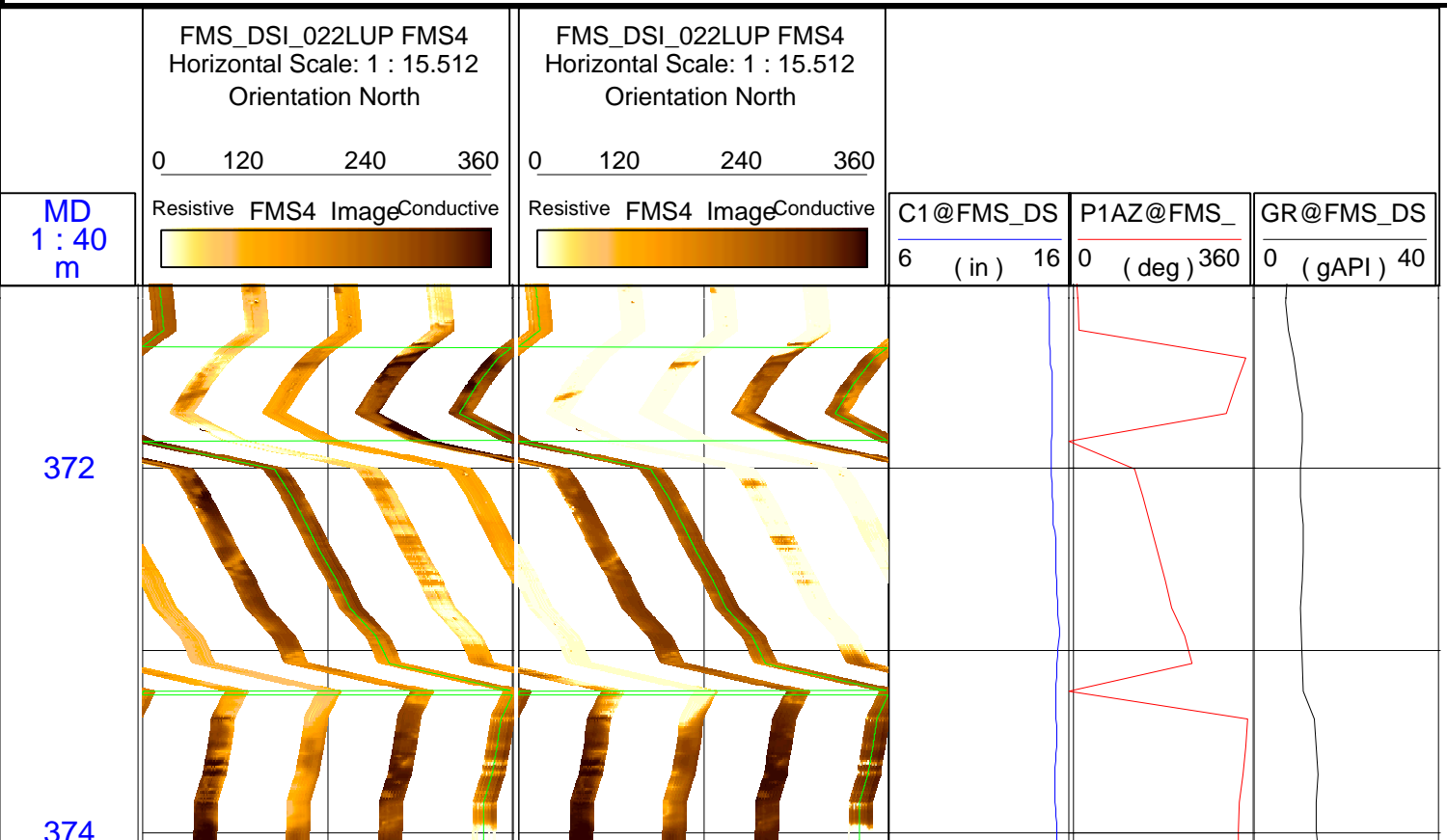
MAXIMUM STRING DIAMETER 4.50 IN
MEASUREMENTS RELATIVE TO TOOL ZERO
ALL LENGTHS IN METERS

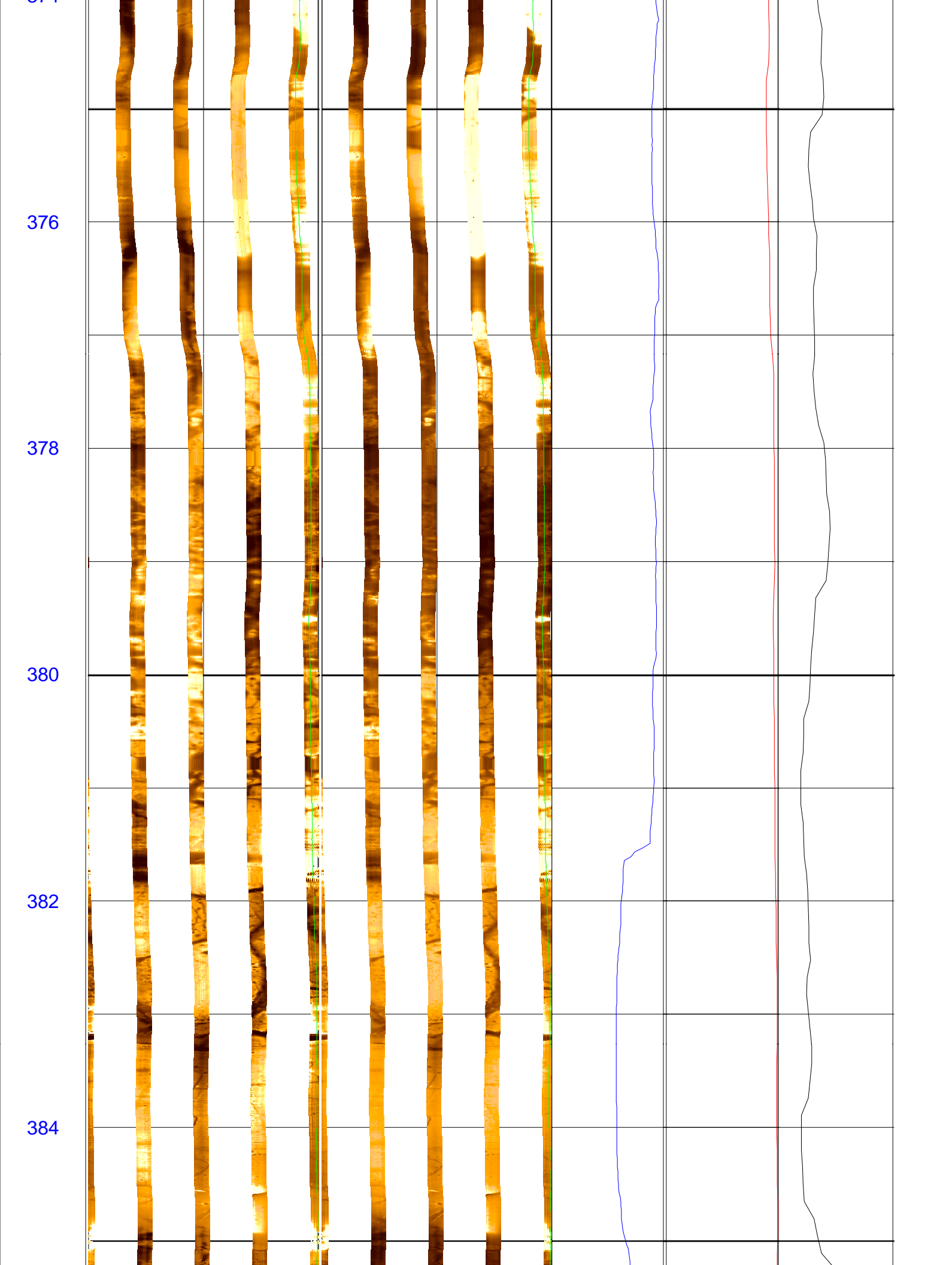


Schlumberger

FIRST PASS

MAXIS Field Log





386

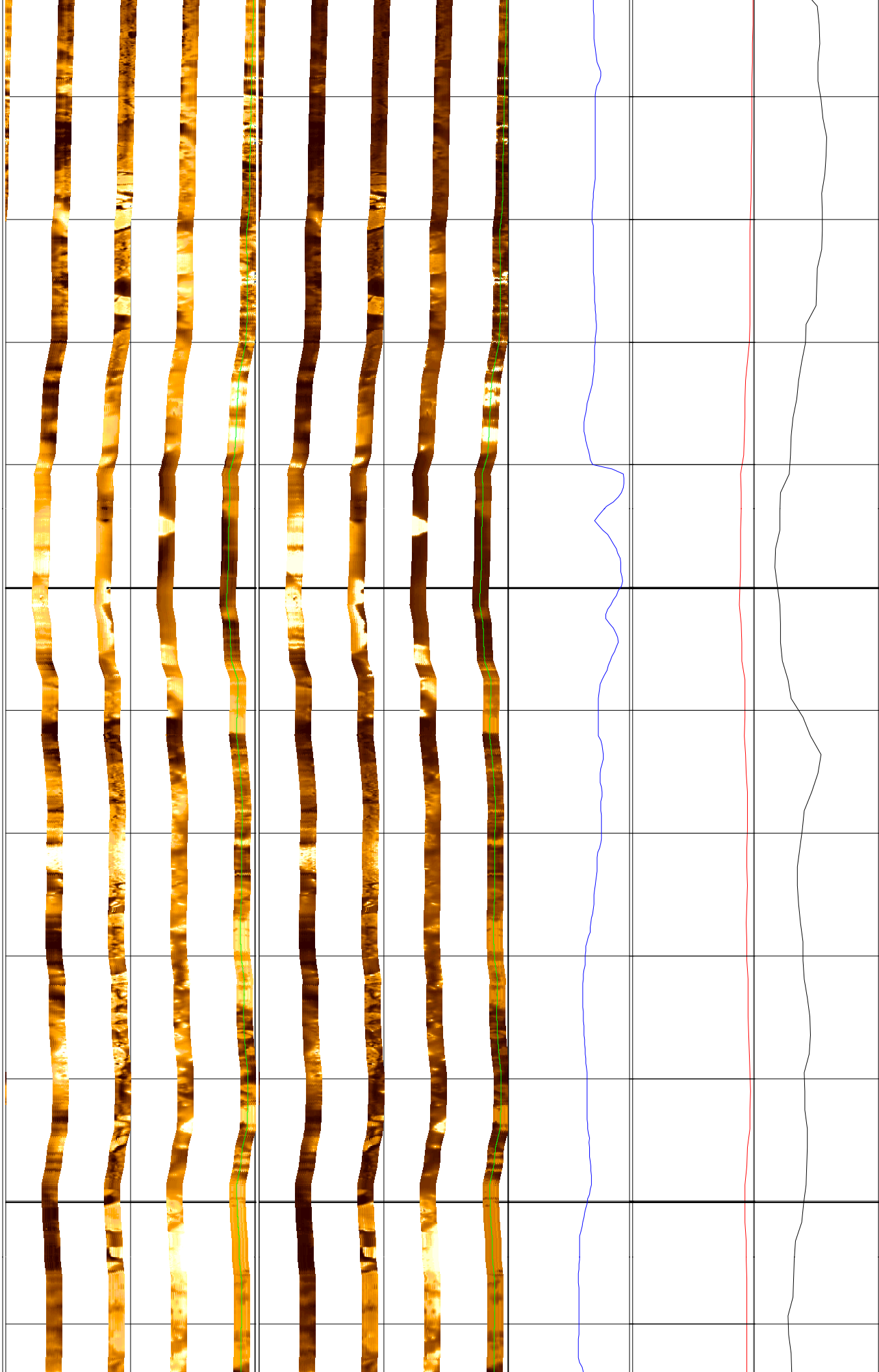
388

390

392

394

396



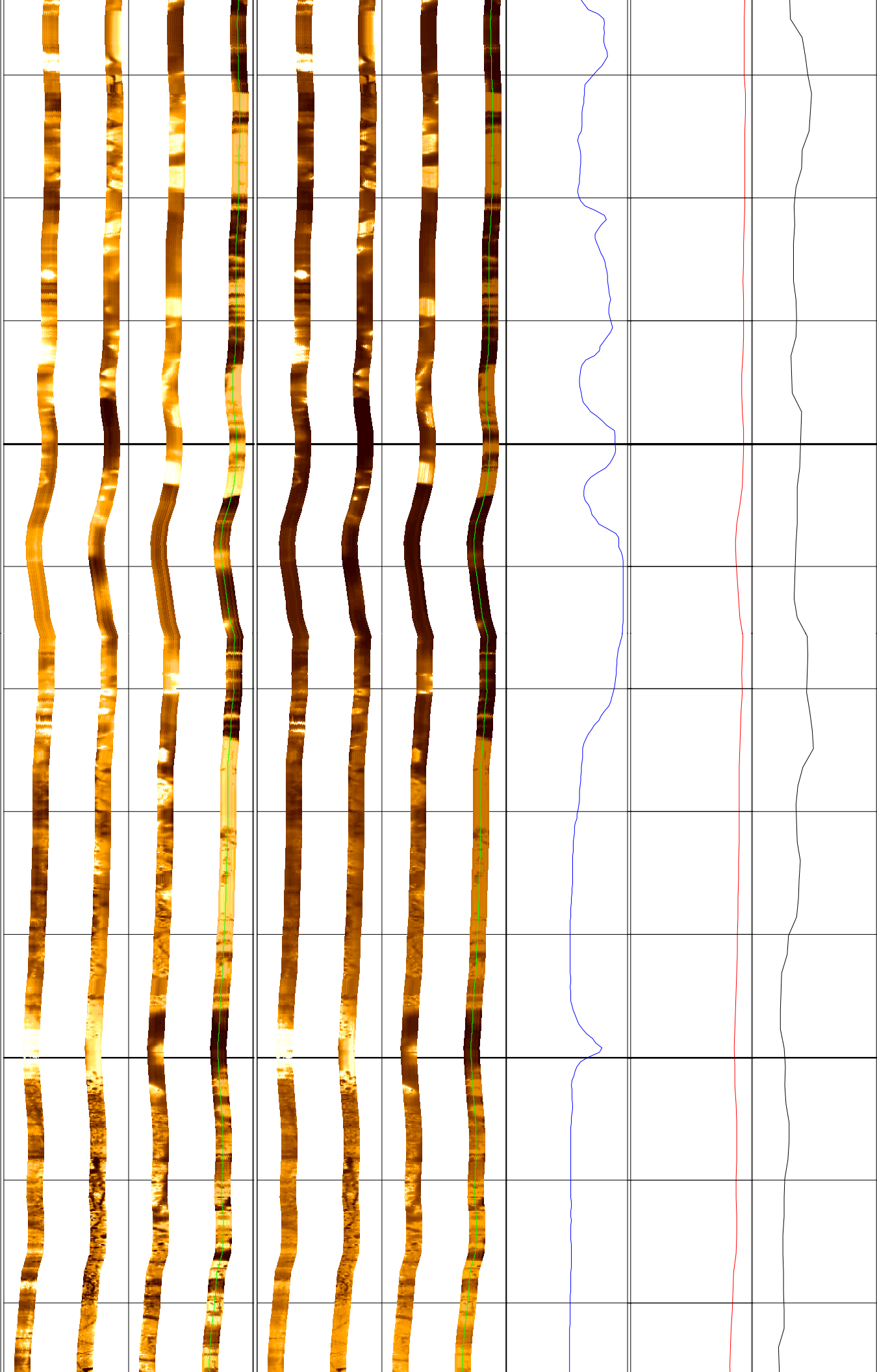
398

400

402

404

406



408

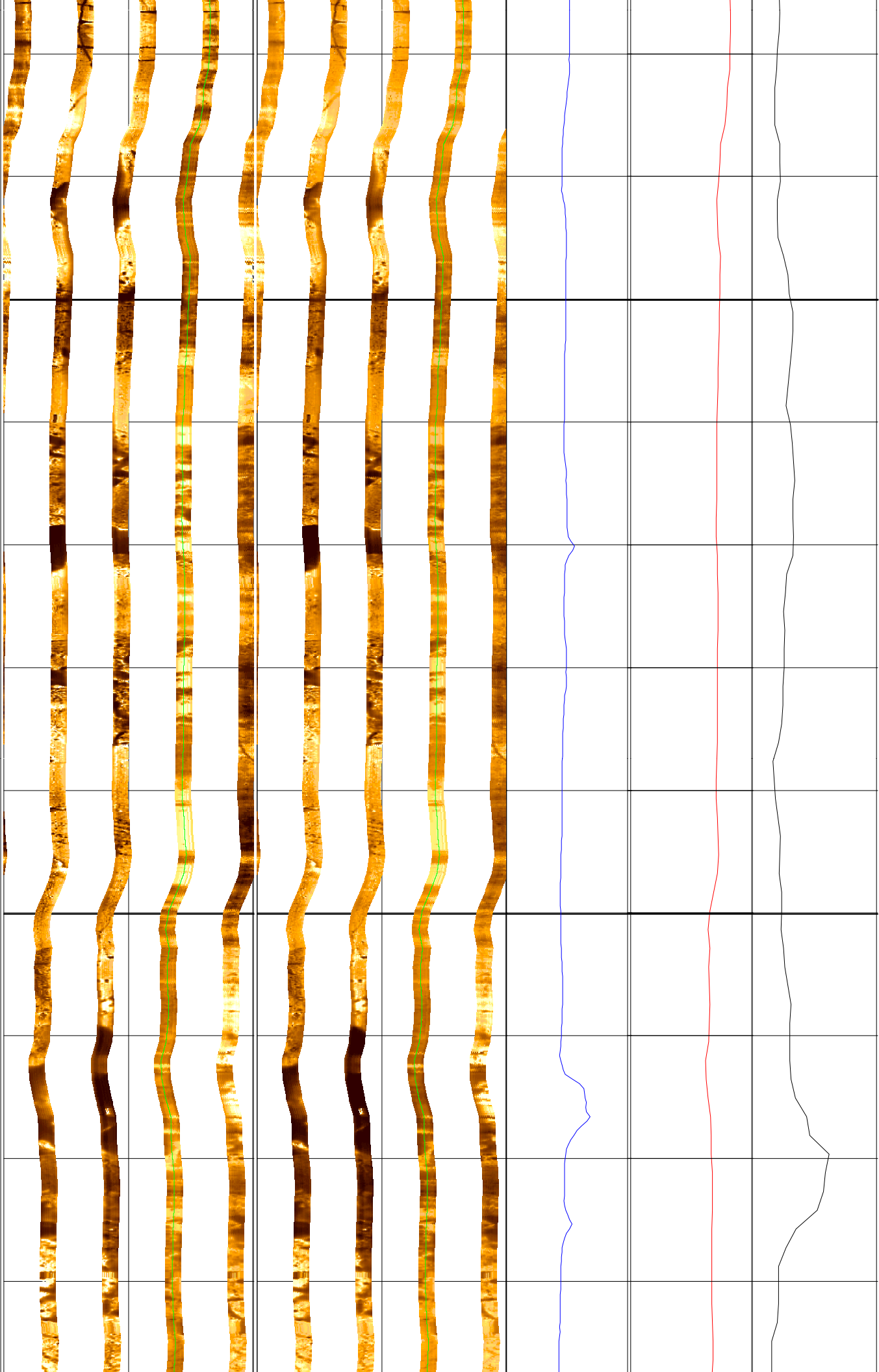
410

412

414

416

418



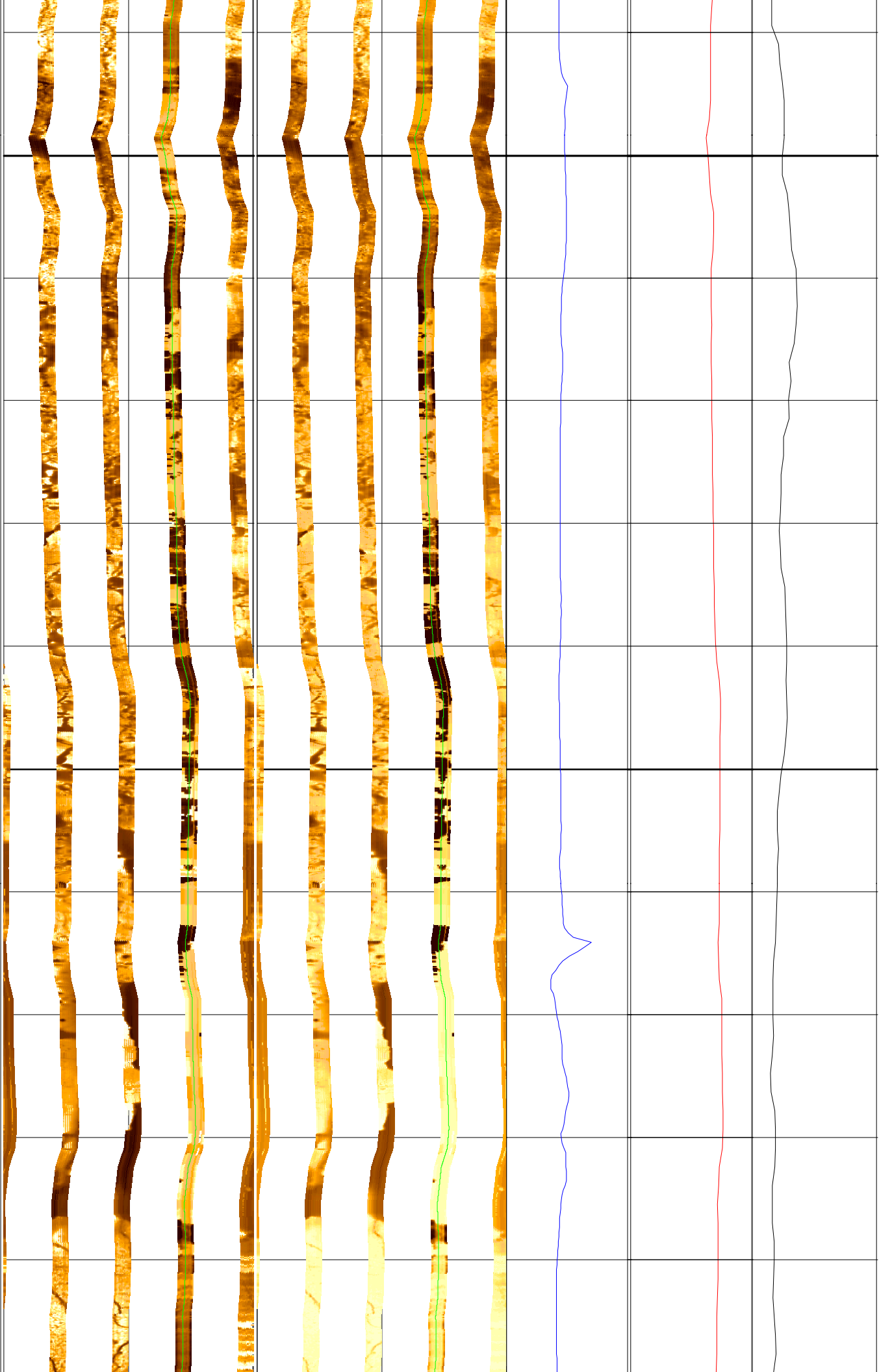
420

422

424

426

428



430

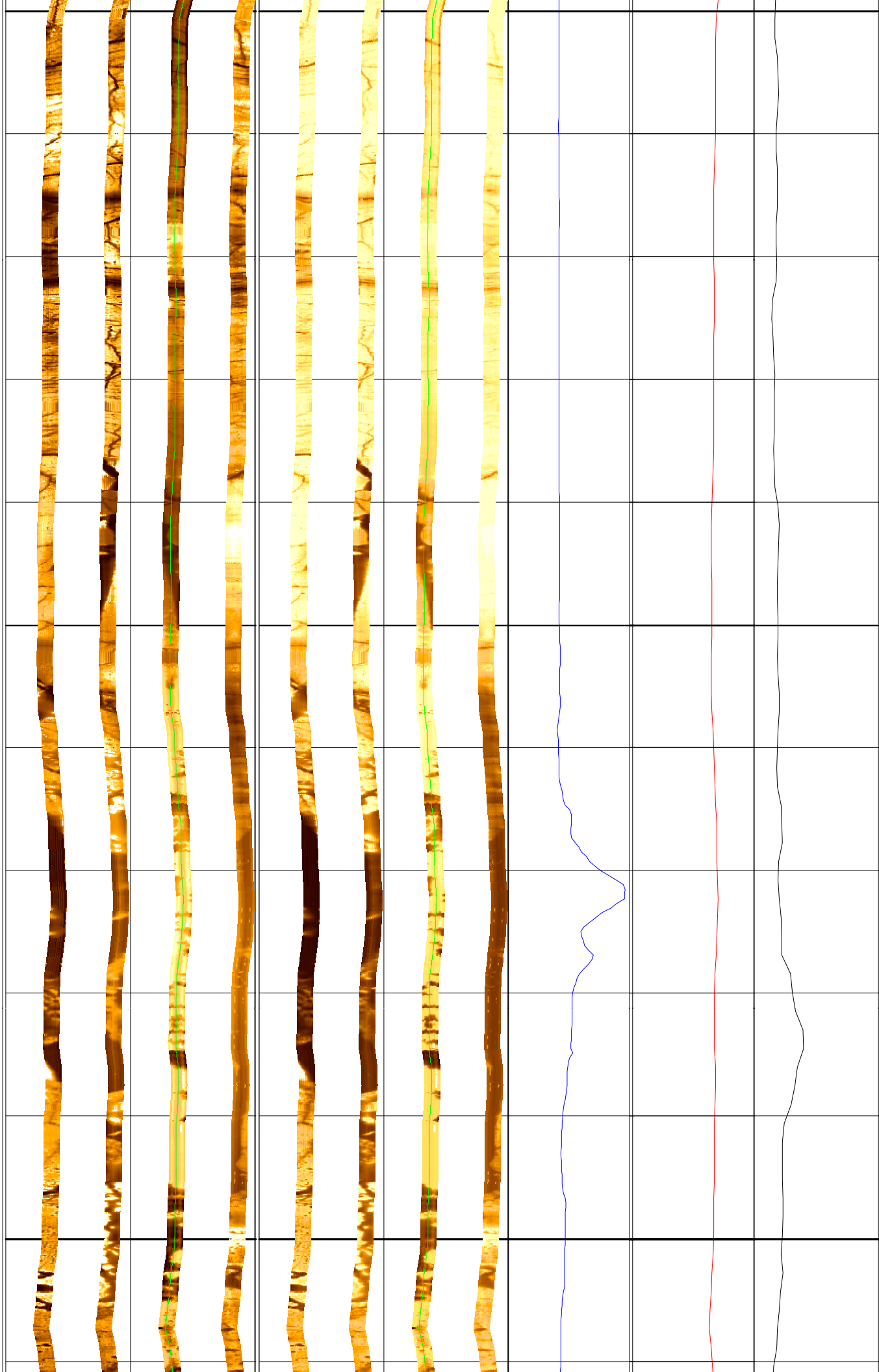
432

434

436

438

440



442

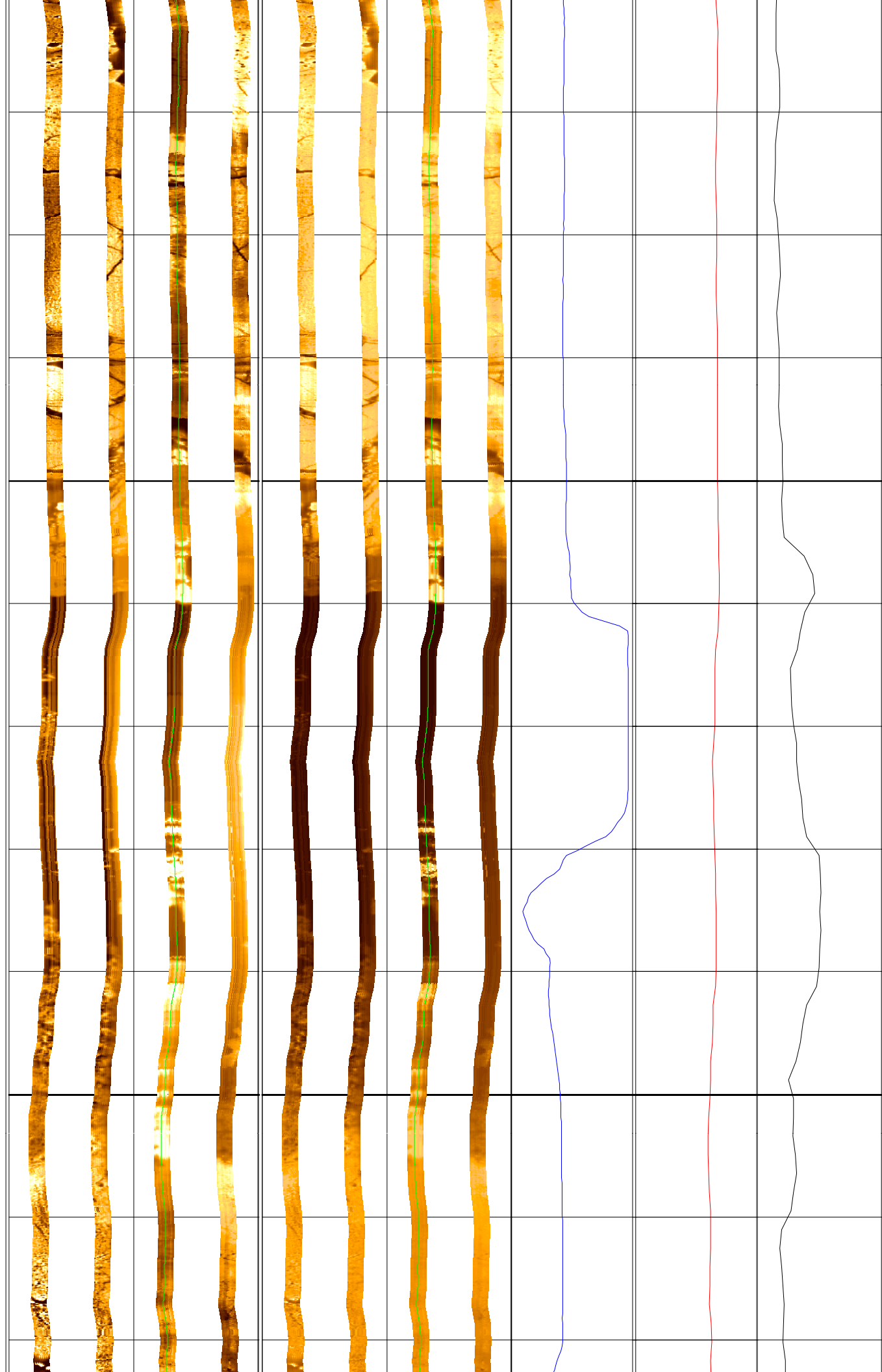
444

446

448

450

452



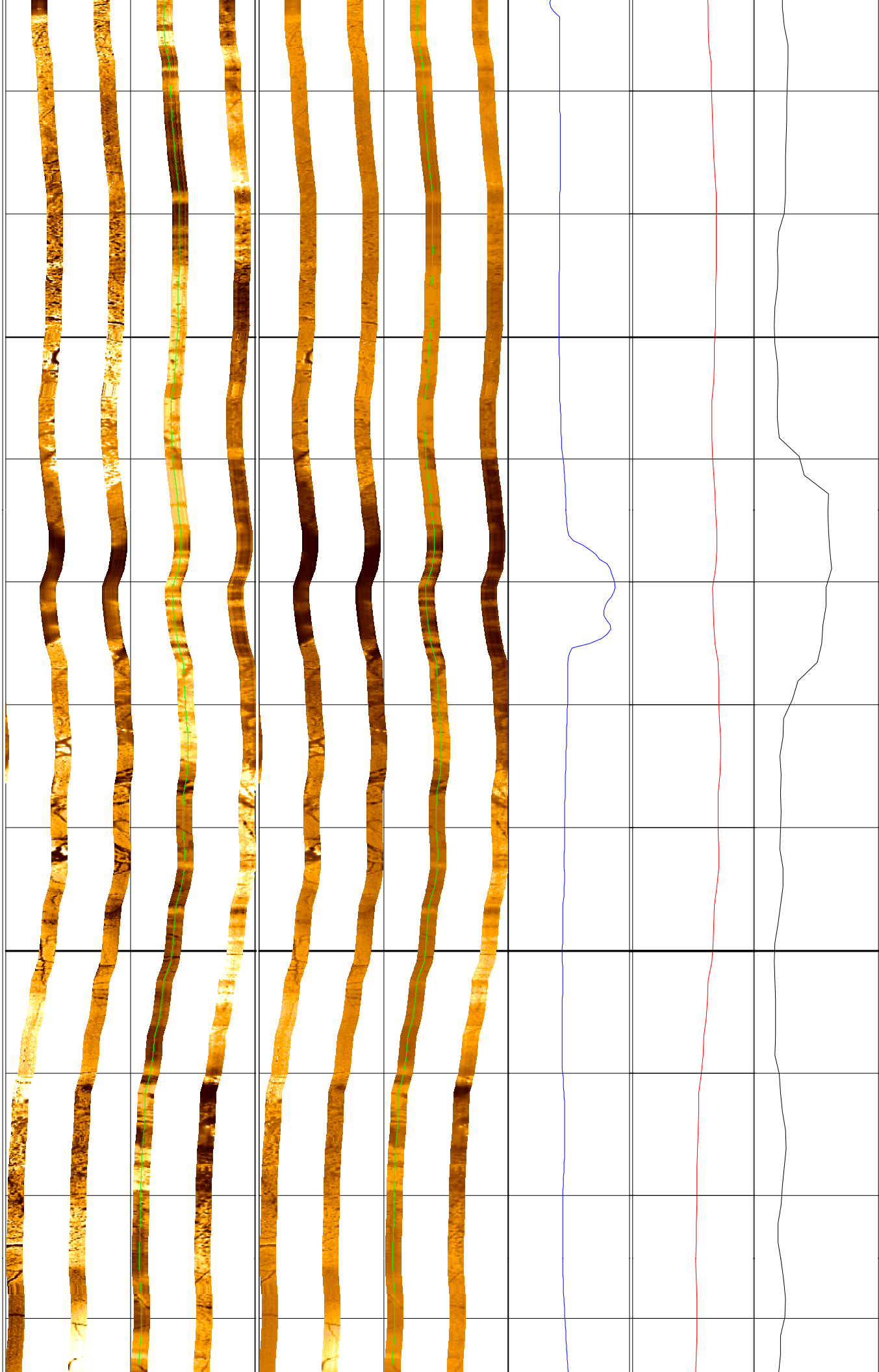
454

456

458

460

462



464

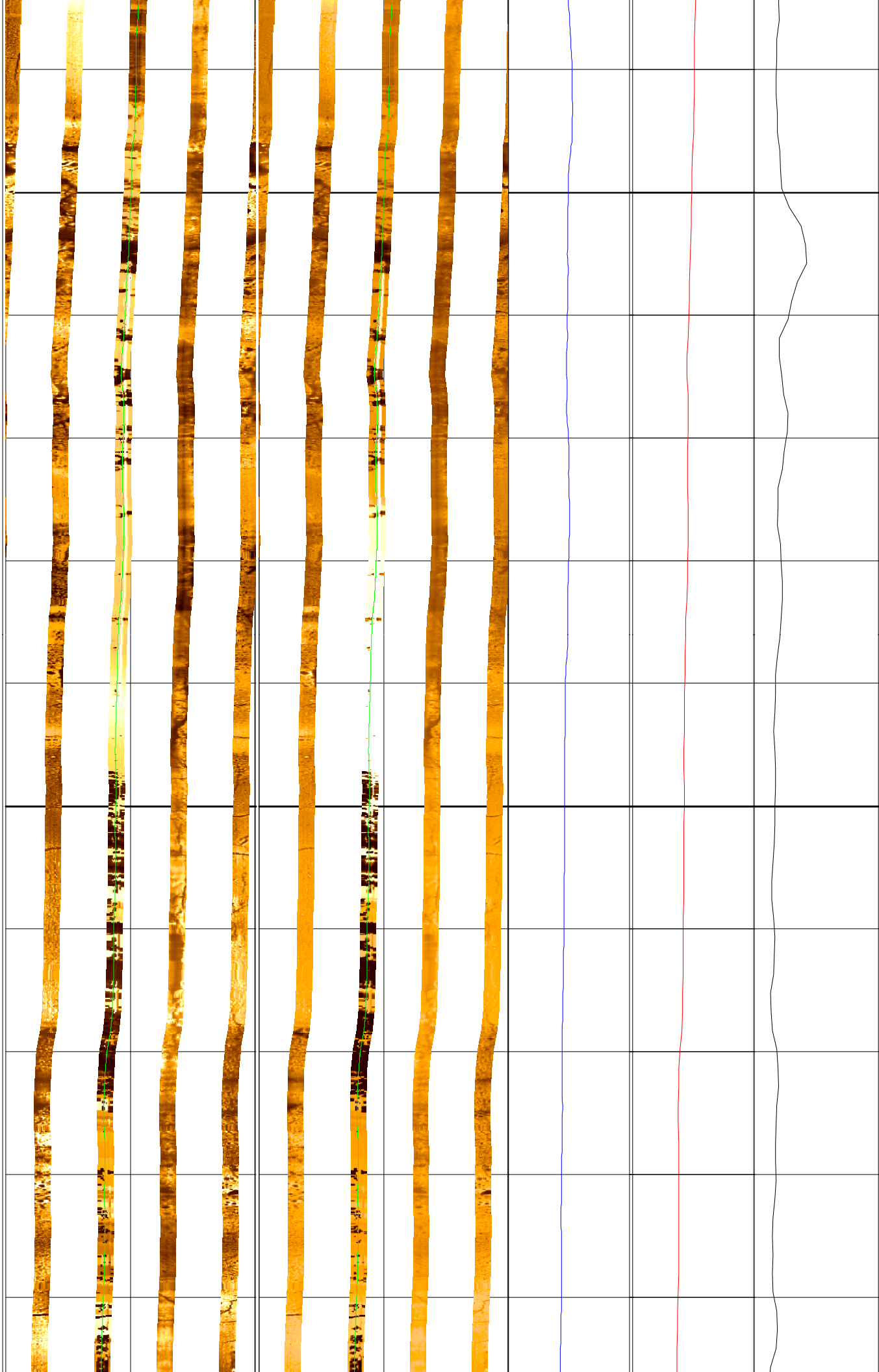
466

468

470

472

474



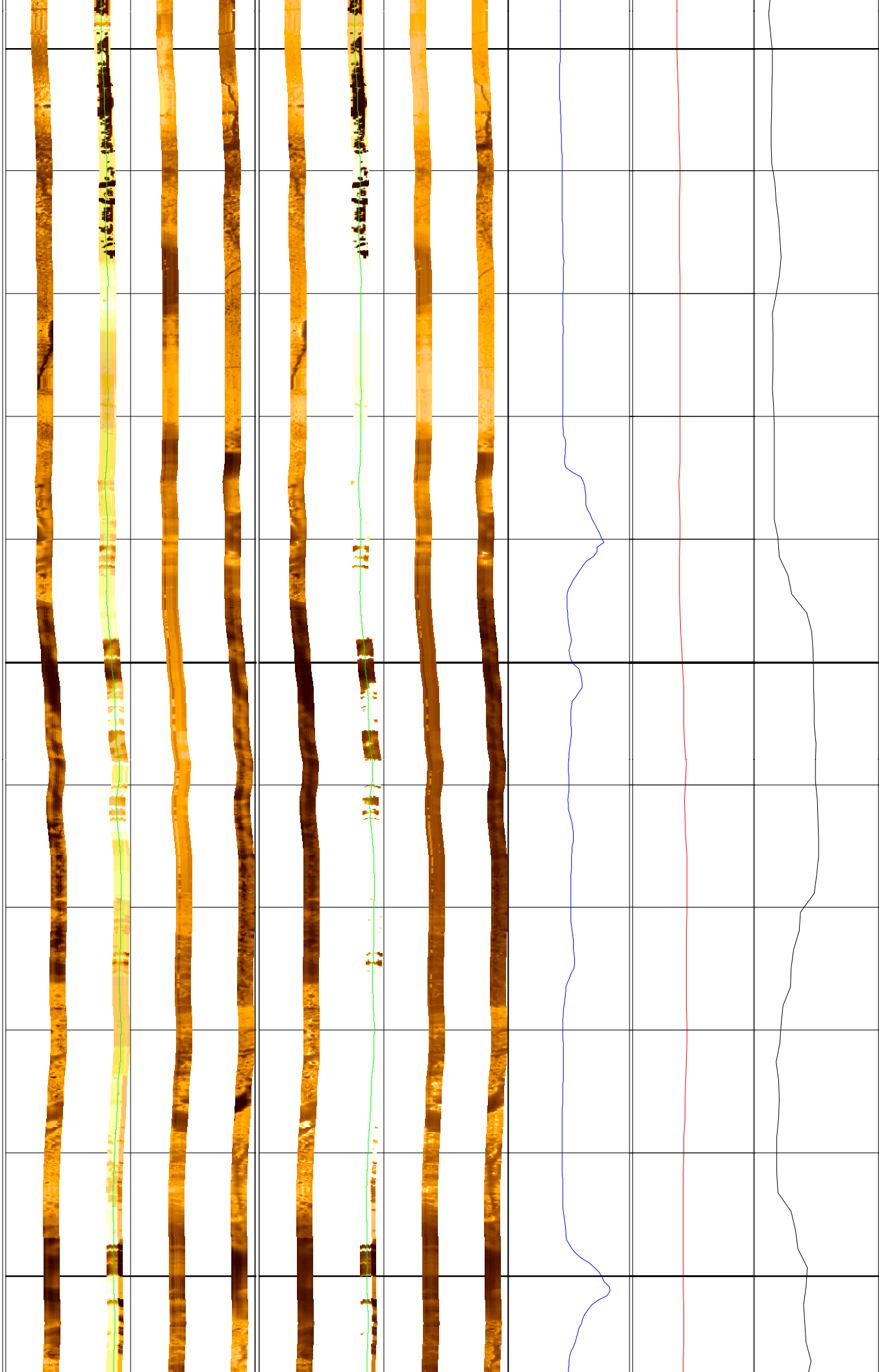
476

478

480

482

484



486

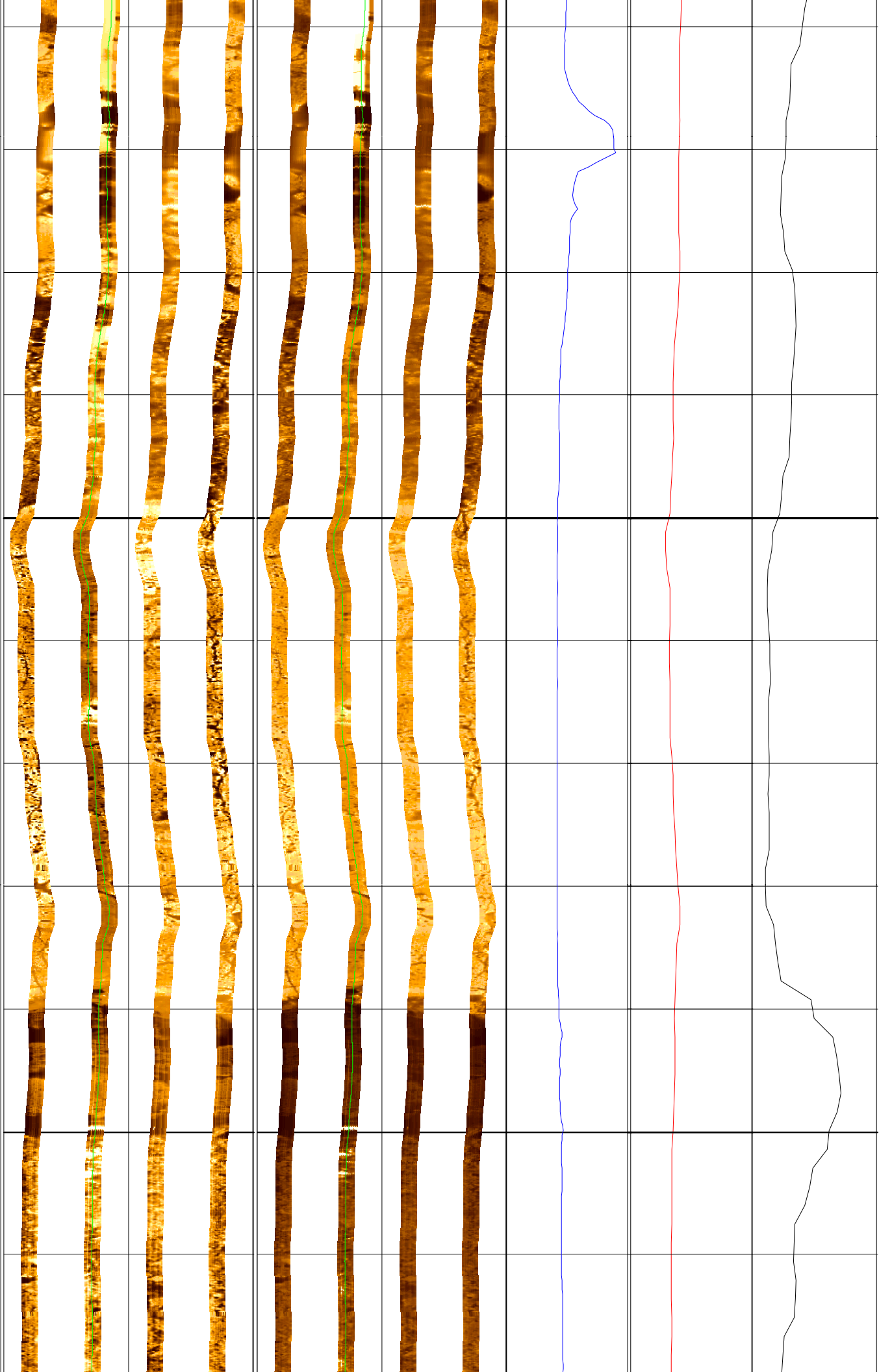
488

490

492

494

496



498

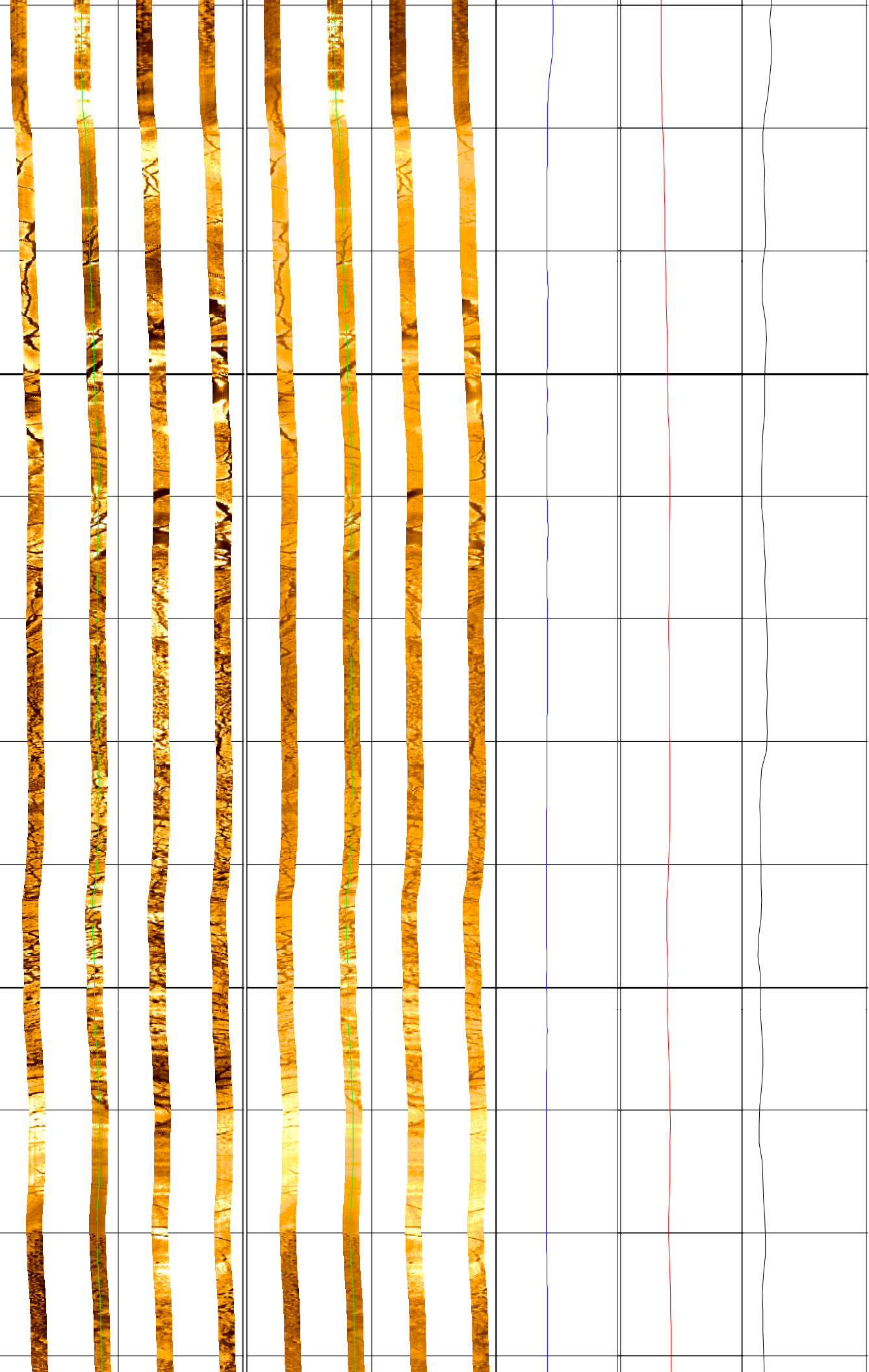
500

502

504

506

508



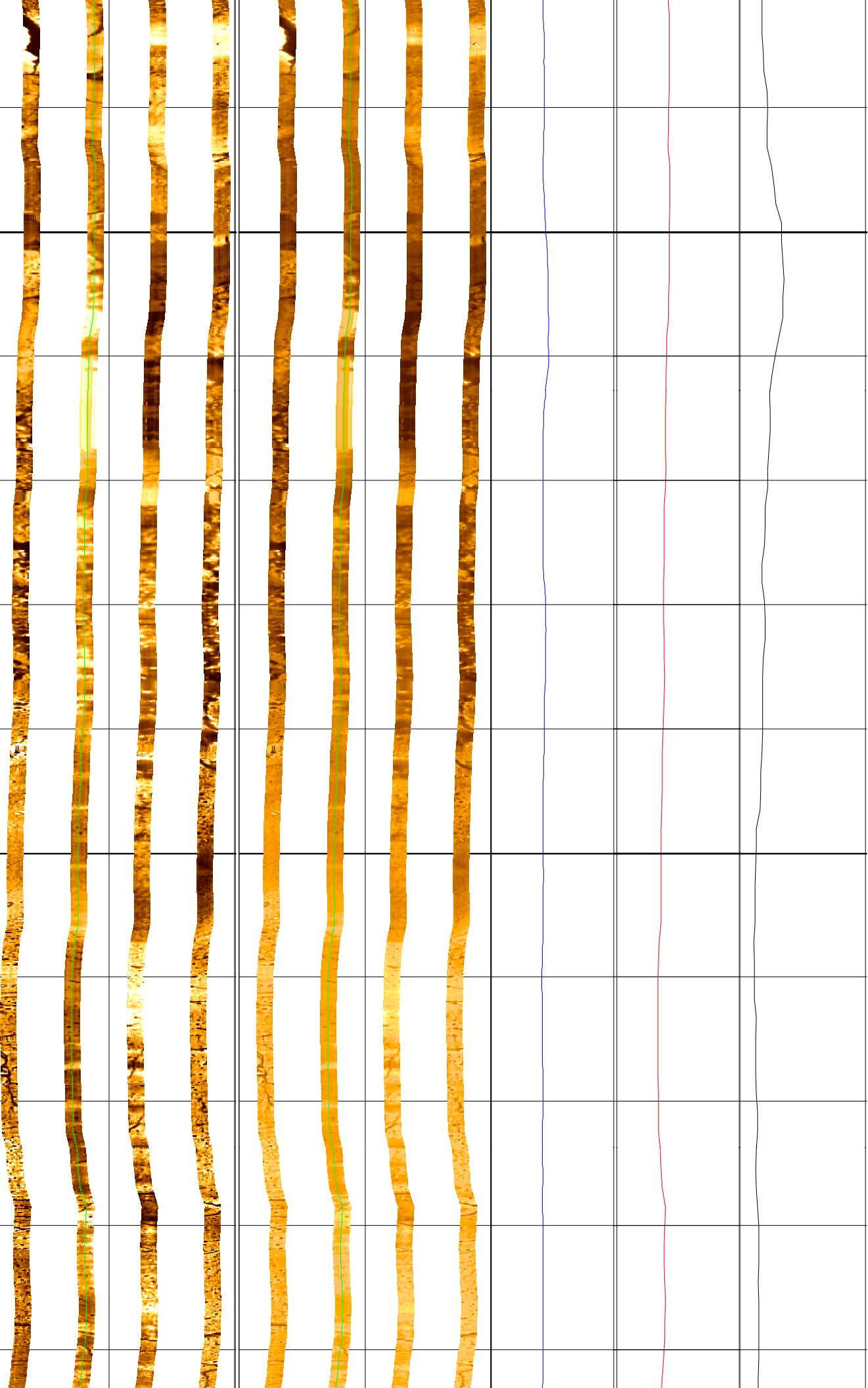
510

512

514

516

518



520

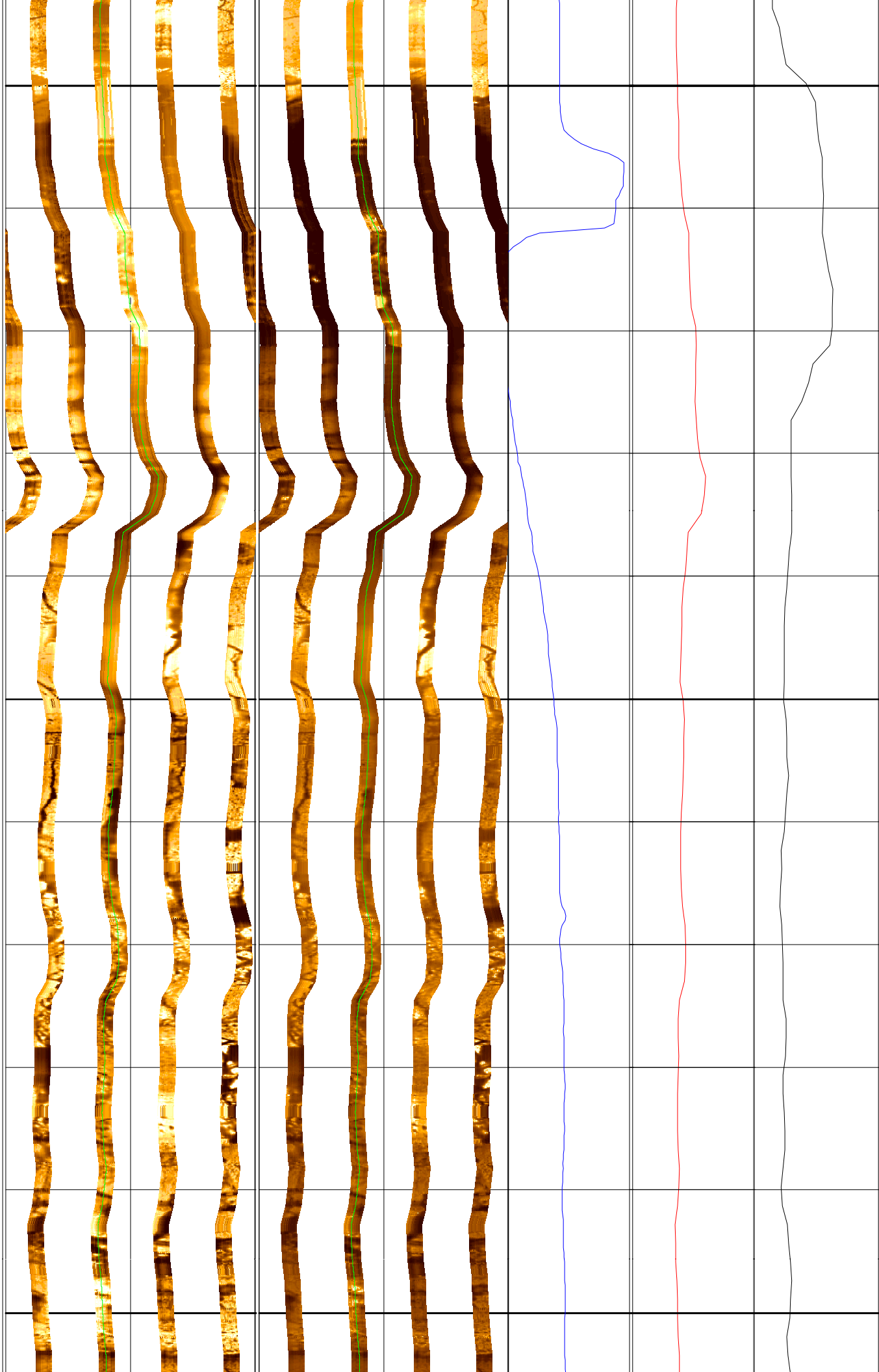
522

524

526

528

530



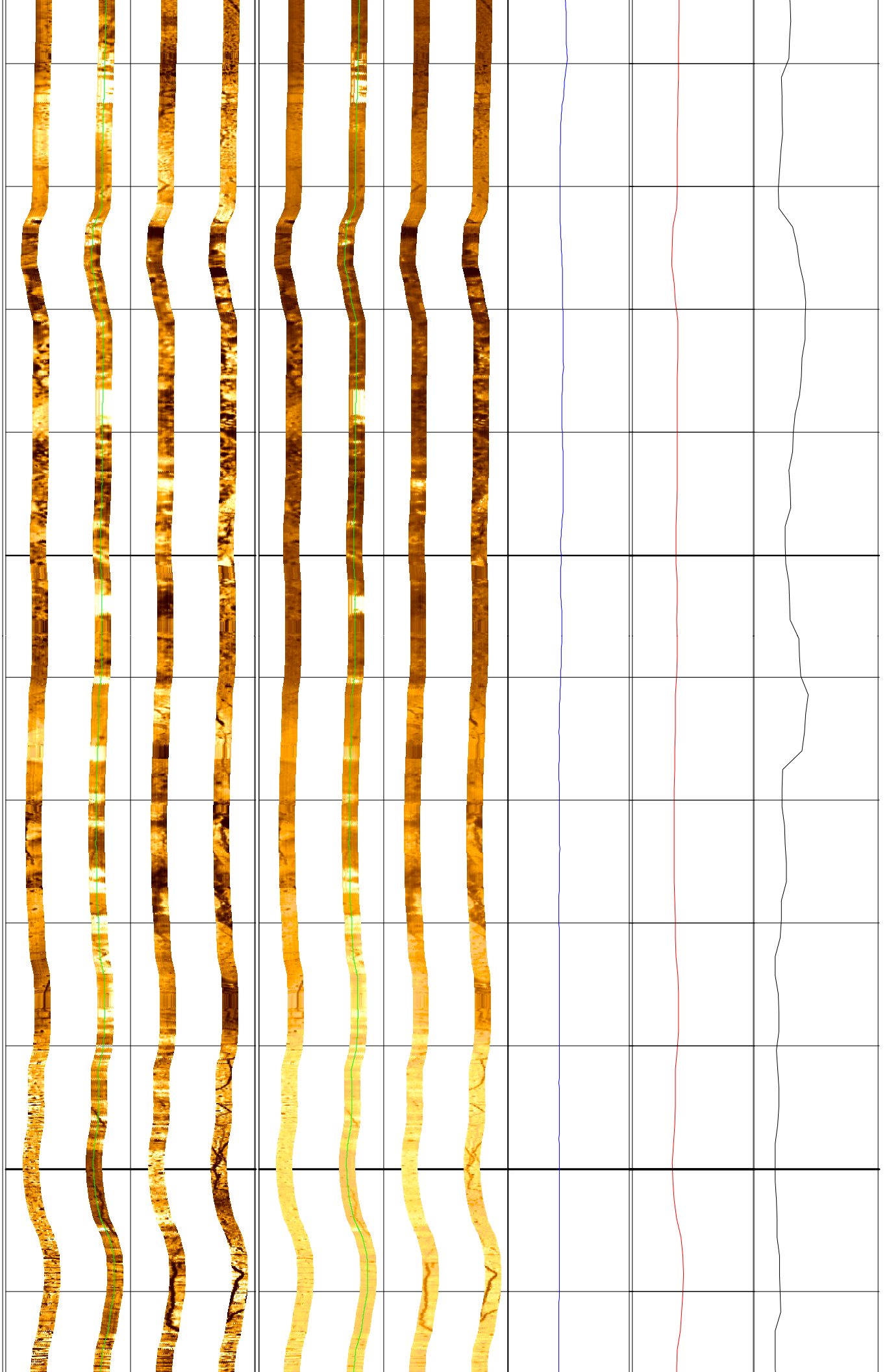
532

534

536

538

540



542

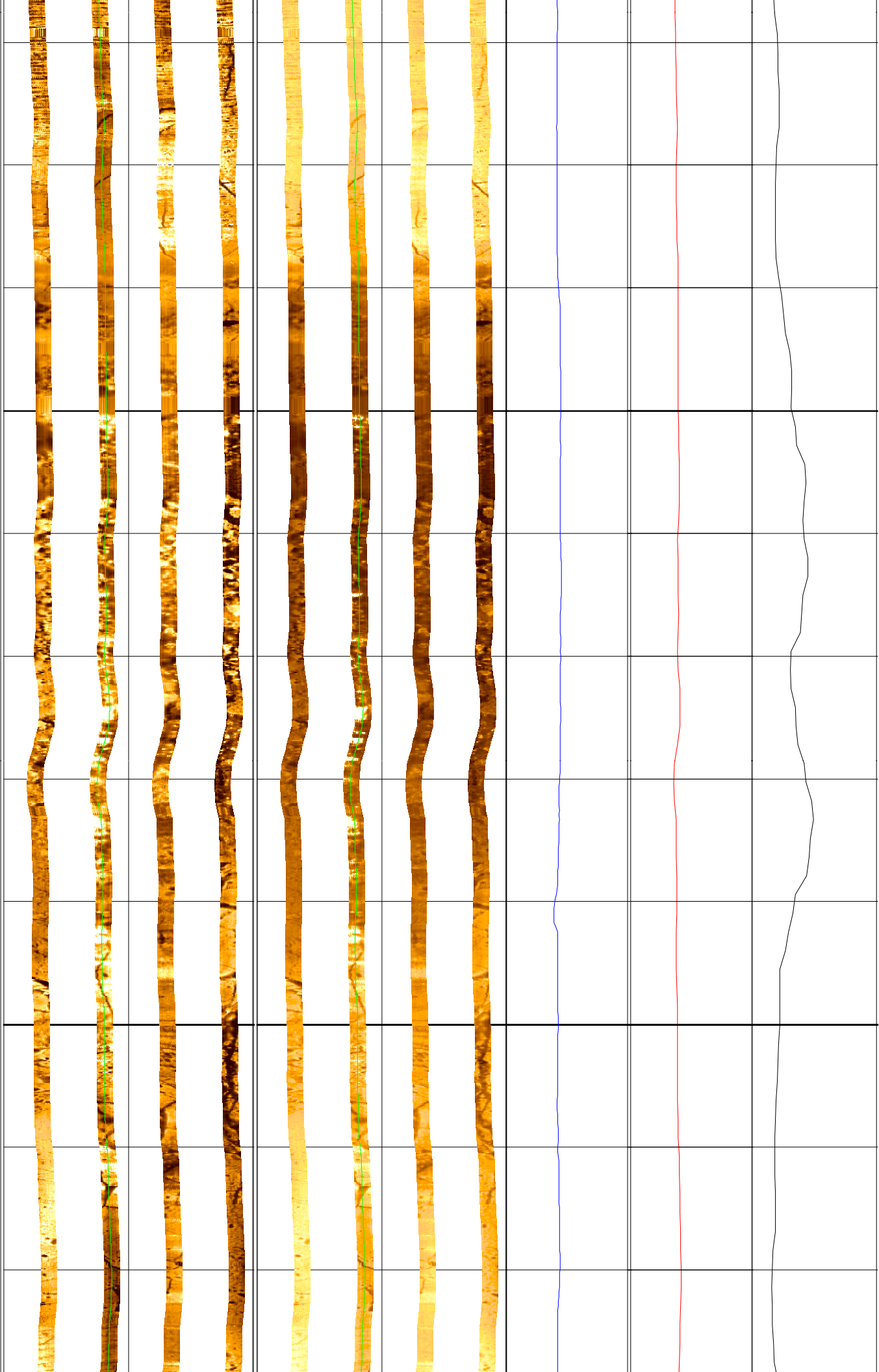
544

546

548

550

552



554

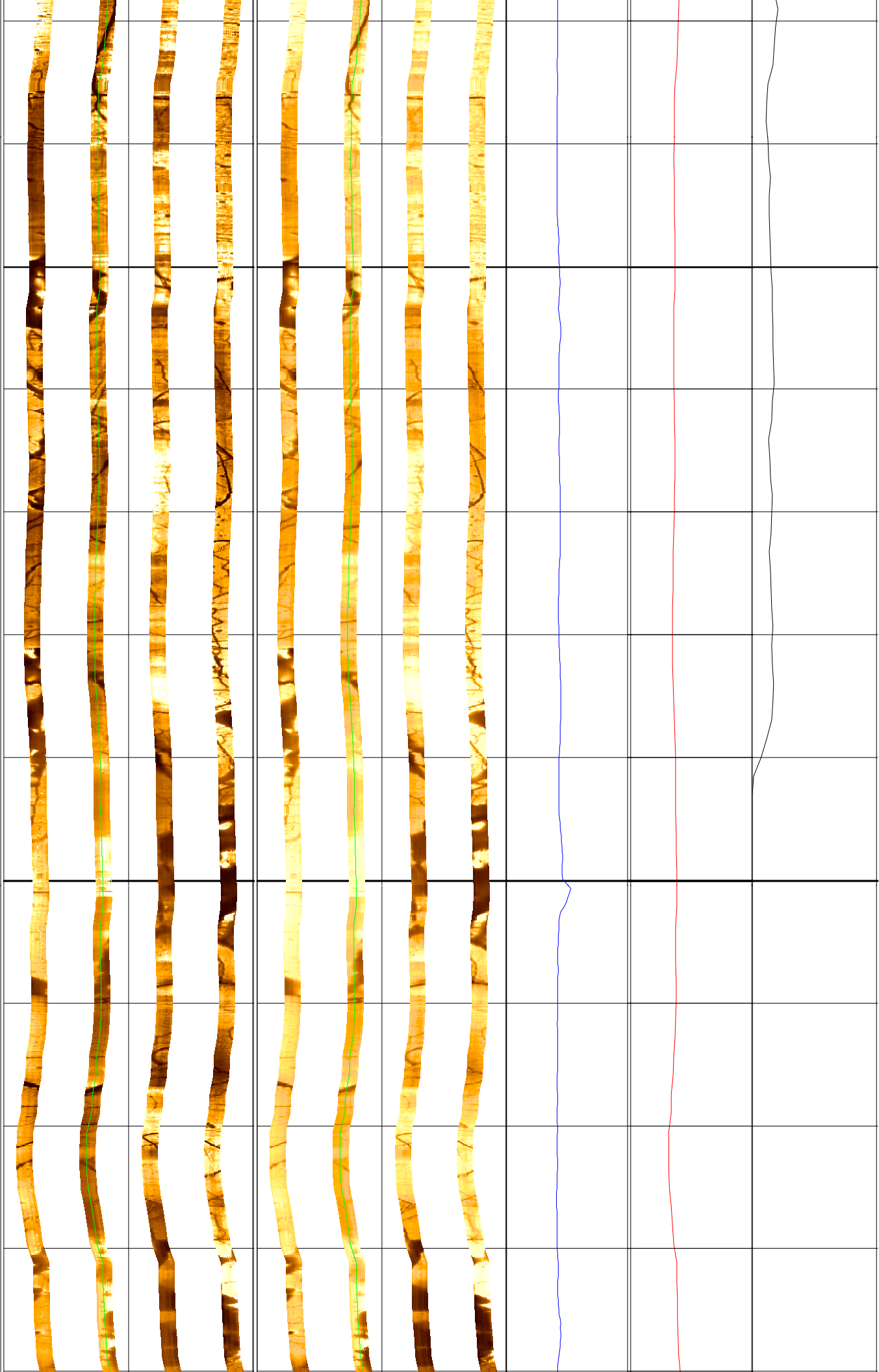
556

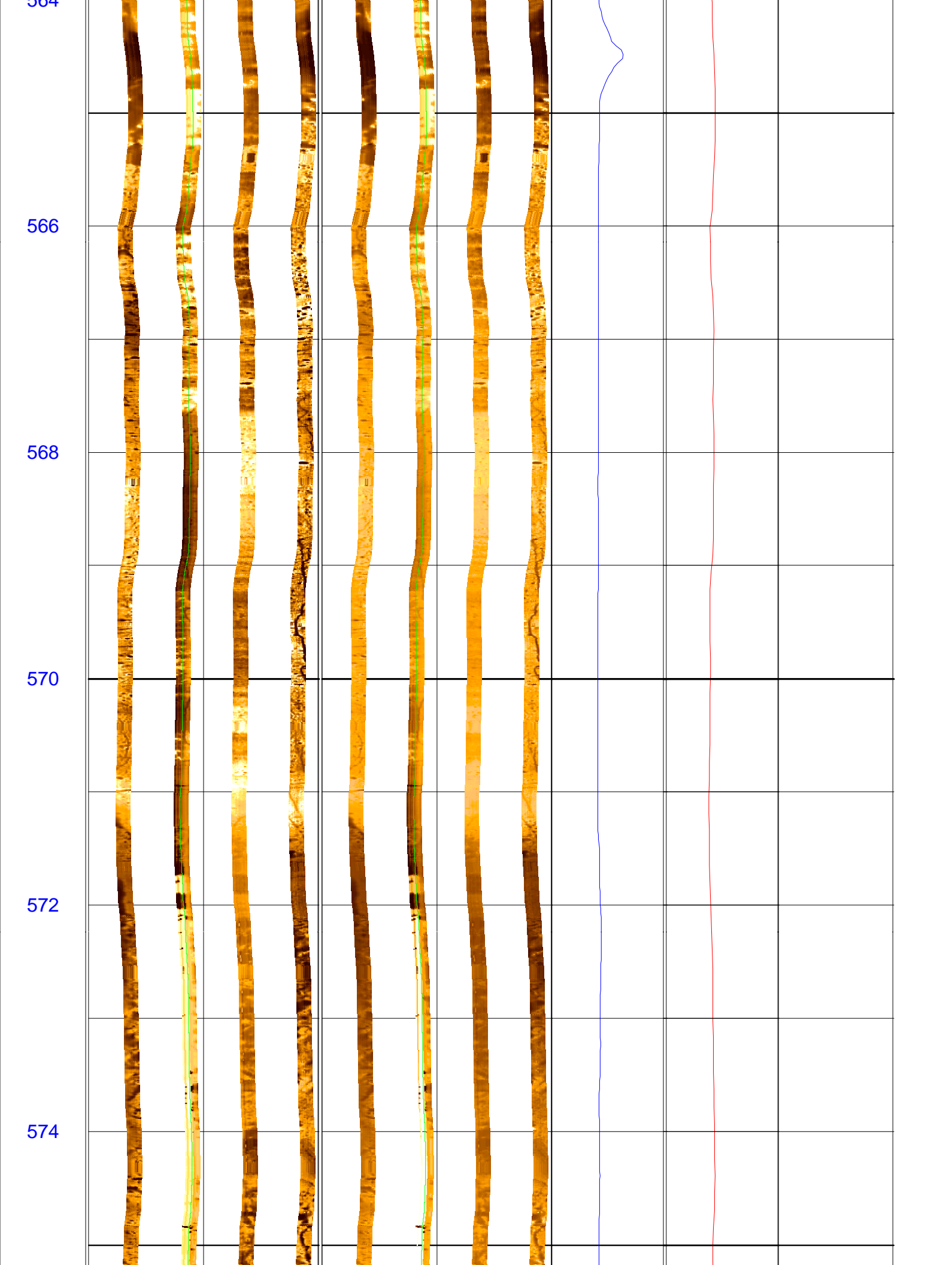
558

560

562

564





576

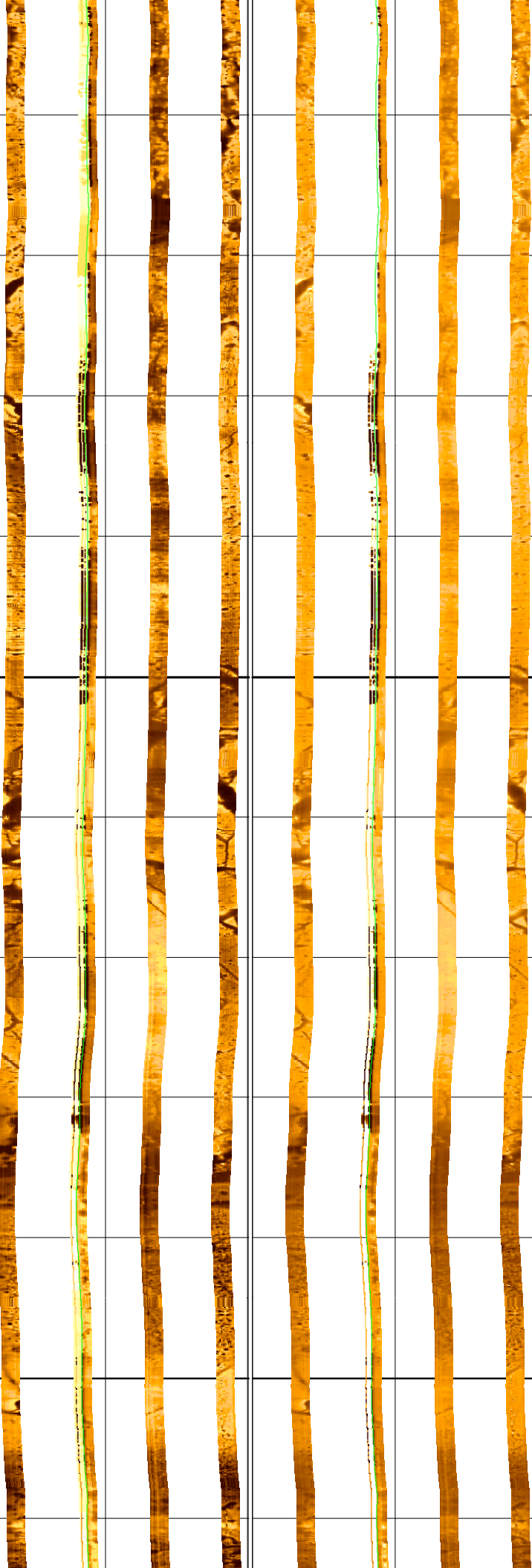
578

580

582

584

586



588

MD
1 : 40
m

FMS_DSI_022LUP FMS4
Horizontal Scale: 1 : 15.512
Orientation North

0 120 240 360

Resistive FMS4 ImageConductive



FMS_DSI_022LUP FMS4
Horizontal Scale: 1 : 15.512
Orientation North

0 120 240 360

Resistive FMS4 ImageConductive



C1@FMS_DS

6 (in) 16

P1AZ@FMS_

0 (deg) 360

GR@FMS_DS

0 (gAPI) 40

Schlumberger

SECOND PASS

MAXIS Field Log

FMS_DSI_023LUP FMS4
Horizontal Scale: 1 : 15.512
Straight Image

0 120 240 360

Resistive FMS4 ImageConductive



FMS_DSI_023LUP FMS4
Horizontal Scale: 1 : 15.512
Straight Image

0 120 240 360

Resistive FMS4 ImageConductive



FMS_DSI_023LUP FMS4
Horizontal Scale: 1 : 15.512
Orientation North

0 120 240 360

Resistive FMS4 ImageConductive



FMS_DSI_023LUP FMS4
Horizontal Scale: 1 : 15.512
Orientation North

0 120 240 360

Resistive FMS4 ImageConductive



C1@FMS_DS

6 (in) 16

C2@FMS_DS

6 (in) 16

P1AZ@FMS_

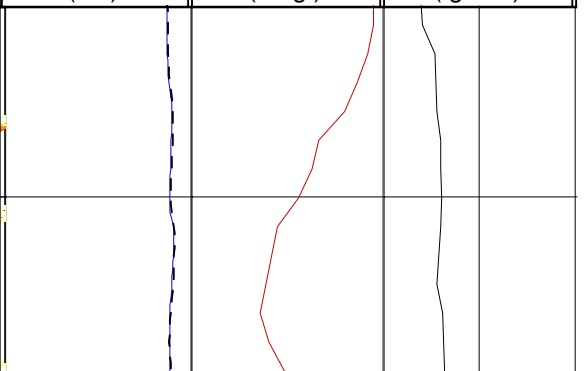
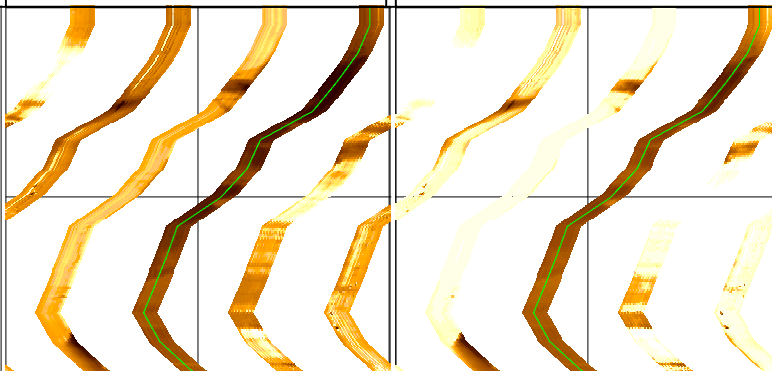
0 (deg) 360

GR@FMS_DS

0 (gAPI) 40

372

MD
1 : 40
m



374

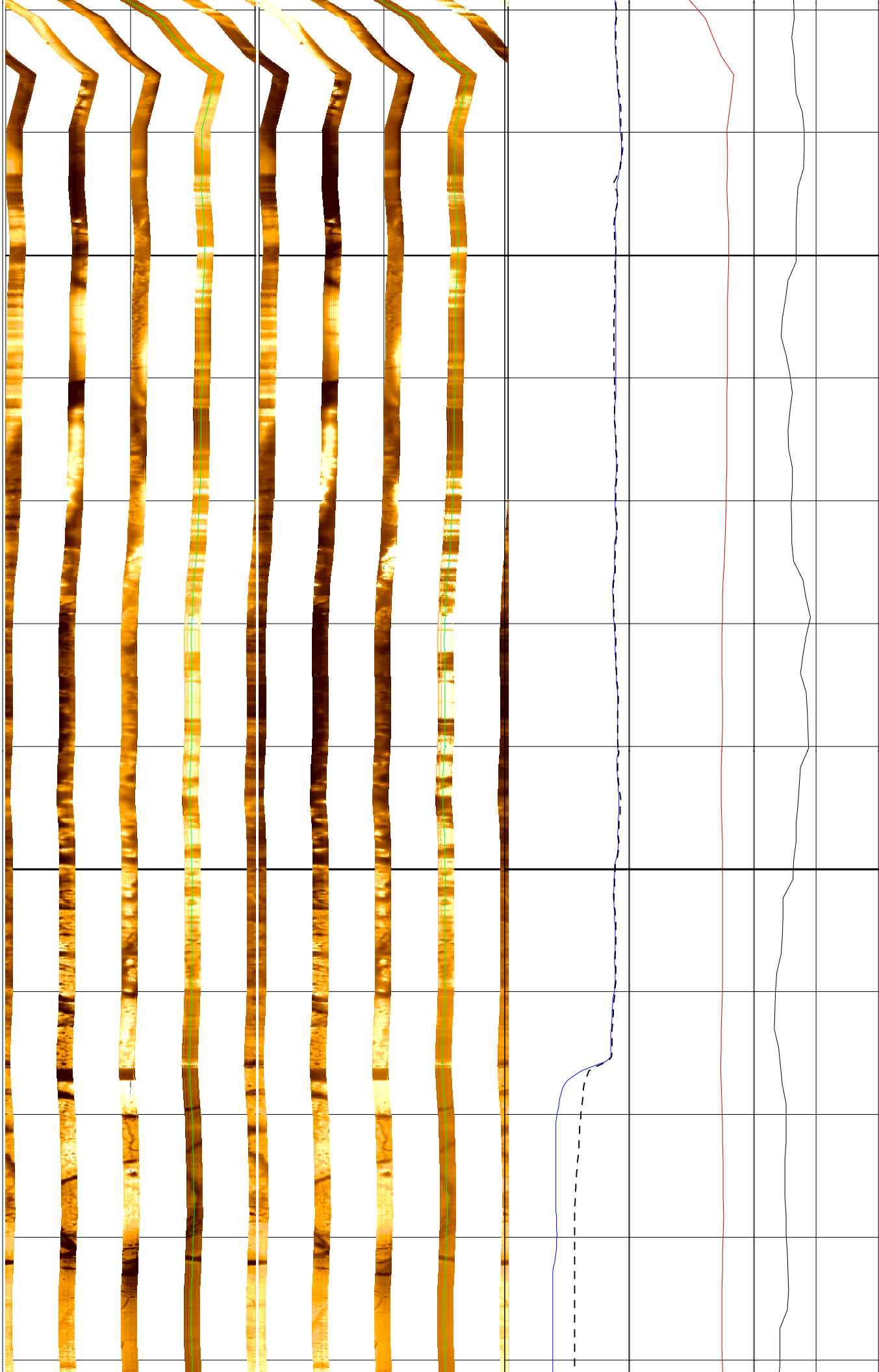
376

378

380

382

384



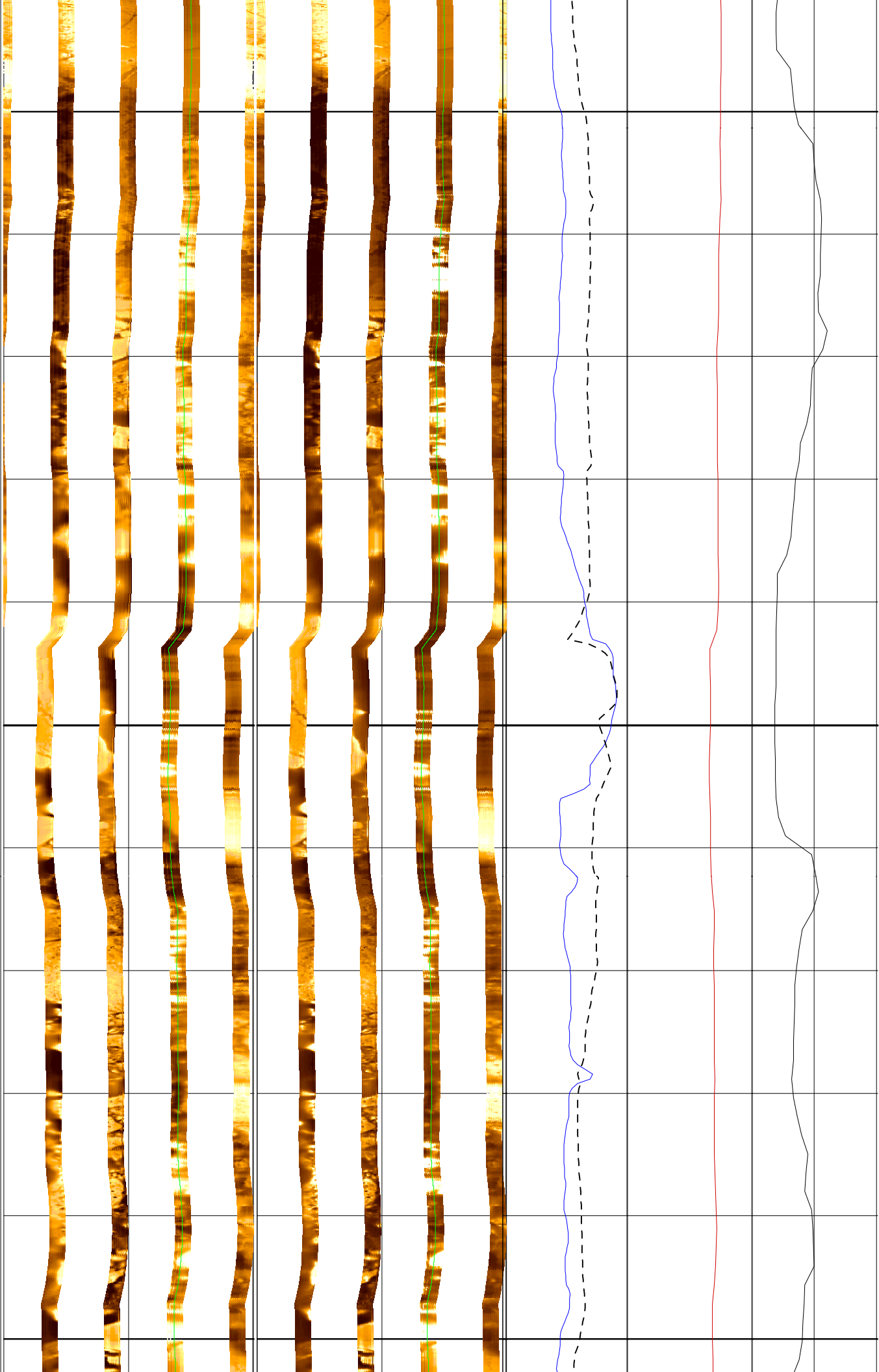
386

388

390

392

394



396

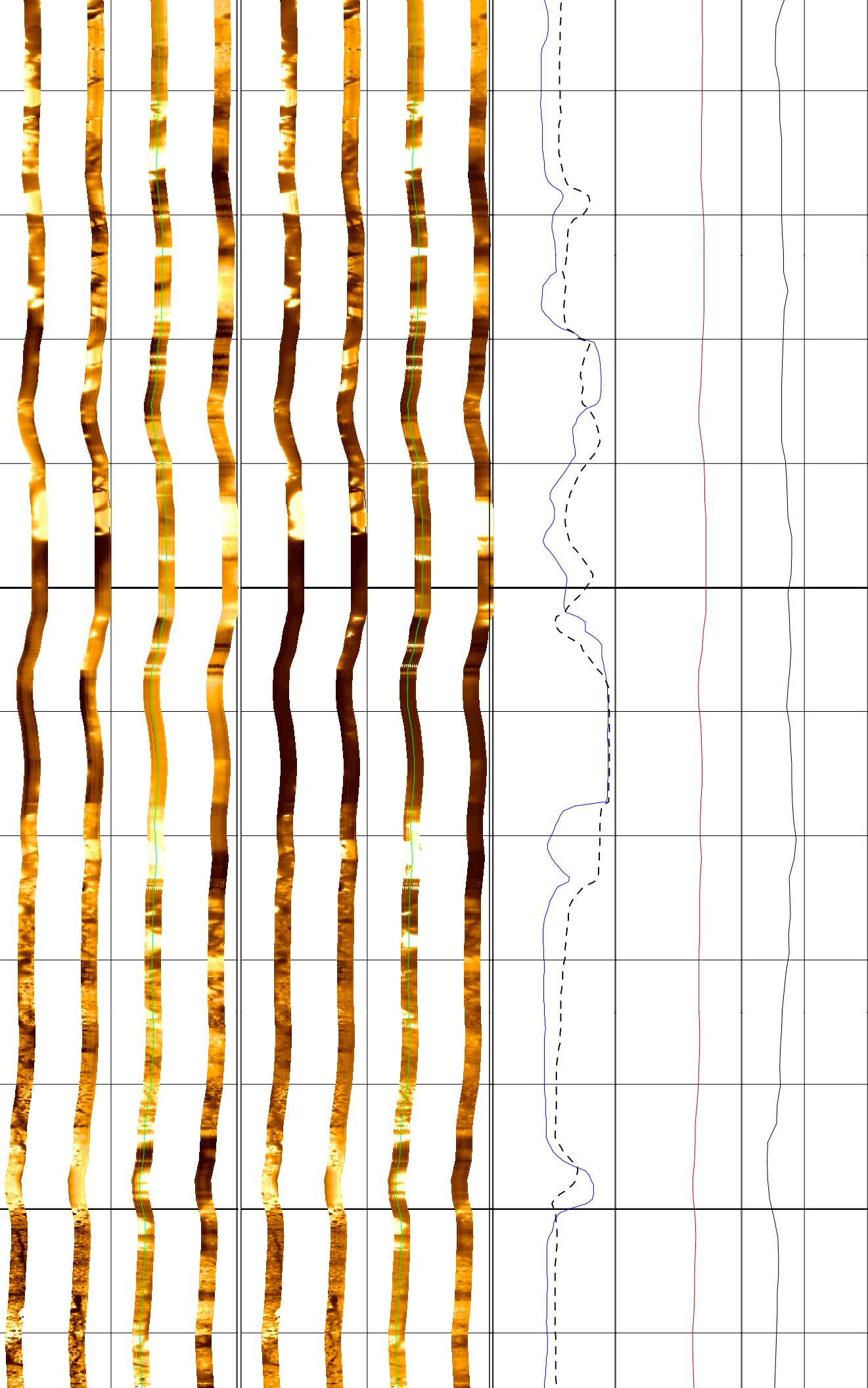
398

400

402

404

406



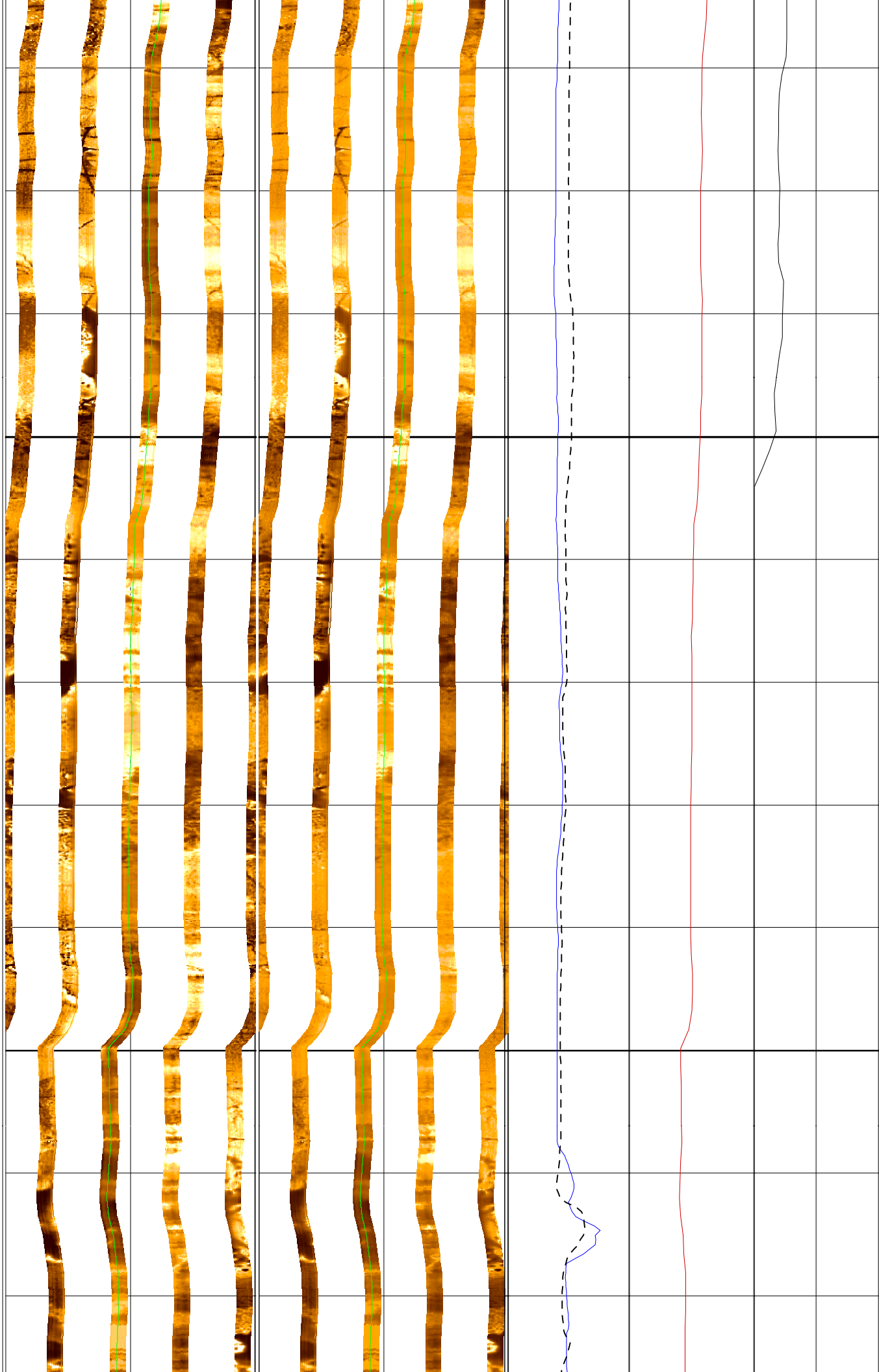
408

410

412

414

416



418

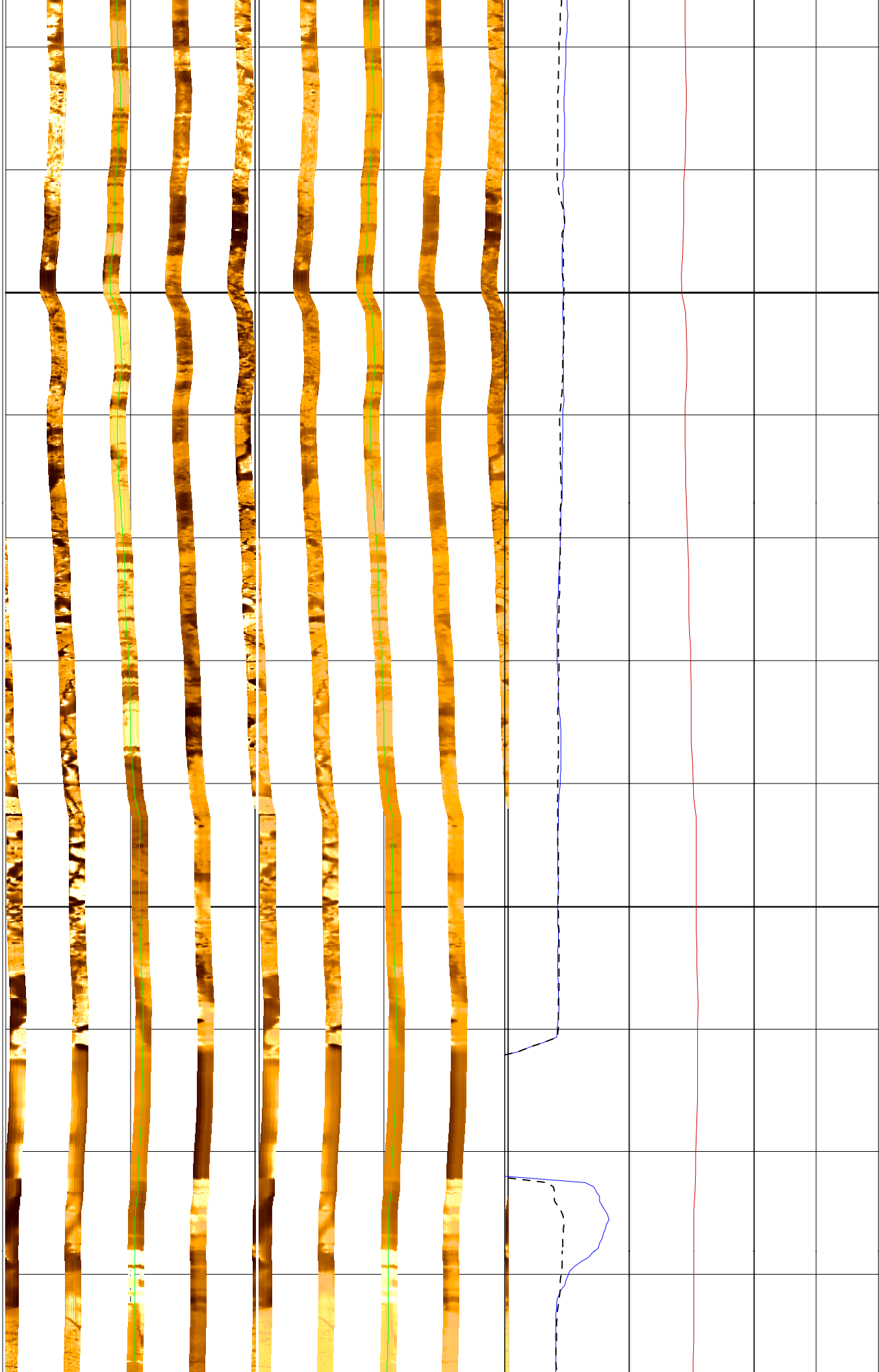
420

422

424

426

428



430

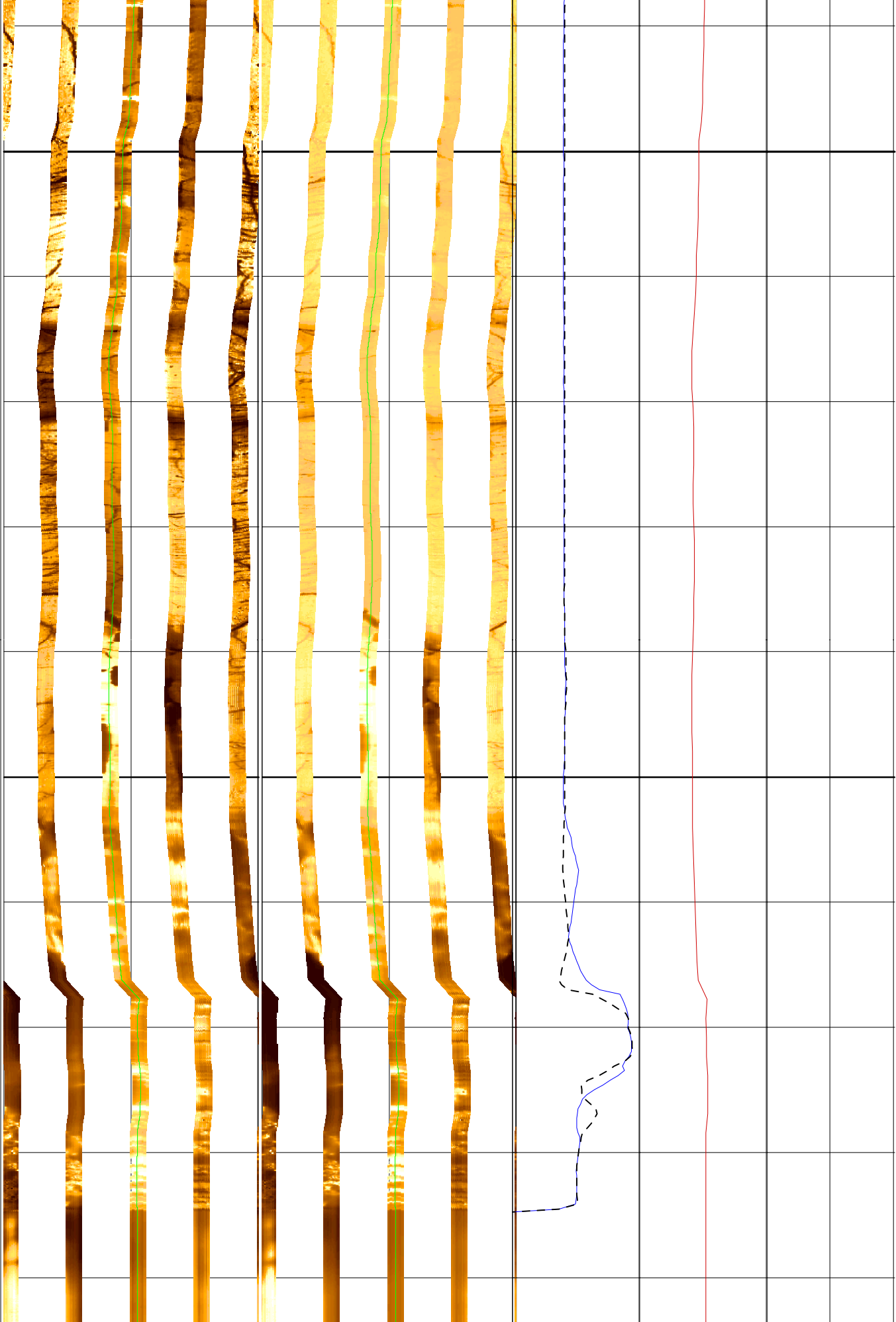
432

434

436

438

440



MD
1 : 40
m

FMS_DSI_023LUP FMS4
Horizontal Scale: 1 : 15.512
Orientation North

0 120 240 360

Resistive FMS4 ImageConductive



FMS_DSI_023LUP FMS4
Horizontal Scale: 1 : 15.512
Straight Image

0 120 240 360

Resistive FMS4 ImageConductive



FMS_DSI_023LUP FMS4
Horizontal Scale: 1 : 15.512
Orientation North

0 120 240 360

Resistive FMS4 ImageConductive



FMS_DSI_023LUP FMS4
Horizontal Scale: 1 : 15.512
Straight Image

0 120 240 360

Resistive FMS4 ImageConductive



C2@FMS_DS

6 (in) 16

C1@FMS_DS

6 (in) 16

P1AZ@FMS_

0 (deg) 360

GR@FMS_DS

0 (gAPI) 40

Company: Lamont Doherty

Well: IODP EXP 306 Site 642 E

Field: Voring Plateau

Country: Norway

Ocean: Atlantic Ocean

Schlumberger

Formation Micro-Scanner