

DISCLAIMER

THE USE OF AND RELIANCE UPON THIS RECORDED-DATA BY THE HEREIN NAMED COMPANY (AND ANY OF ITS AFFILIATES, PARTNERS, REPRESENTATIVES, AGENTS, CONSULTANTS AND EMPLOYEES) IS SUBJECT TO THE TERMS AND CONDITIONS AGREED UPON BETWEEN SCHLUMBERGER AND THE COMPANY, INCLUDING: (a) RESTRICTIONS ON USE OF THE RECORDED-DATA; (b) DISCLAIMERS AND WAIVERS OF WARRANTIES AND REPRESENTATIONS REGARDING COMPANY'S USE OF AND RELIANCE UPON THE RECORDED-DATA; AND (c) CUSTOMER'S FULL AND SOLE RESPONSIBILITY FOR ANY INFERENCE DRAWN OR DECISION MADE IN CONNECTION WITH THE USE OF THIS RECORDED-DATA.


OTHER SERVICES1 OS1: MESTB/DSI OS2: OS3: OS4: OS5:	OTHER SERVICES2 OS1: OS2: OS3: OS4: OS5:
---	---

REMARKS: RUN NUMBER 1 Hole Cored with RCB in 1985. All depths in Meters Below Rig Floor (MBRF). Hole flushed with Sepiolite Sea Floor Driller- 1289 MBRF. Total Depth Driller- 2518.4 MBRF. Total Depth Logger- 1870 MBRF. Casing Bottom Driller- 1660.5 MBRF. Casing Bottom Logger- 1660.5 MBRF. HLDS Caliper failed and was not presented. Could not get to total depth.	REMARKS: RUN NUMBER 2
--	-----------------------

RUN 1			RUN 2		
SERVICE ORDER #:	12C0-301		SERVICE ORDER #:		
PROGRAM VERSION:			PROGRAM VERSION:		
FLUID LEVEL:			FLUID LEVEL:		
LOGGED INTERVAL	START	STOP	LOGGED INTERVAL	START	STOP

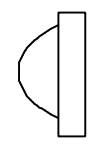
EQUIPMENT DESCRIPTION

RUN 1		RUN 2	
SURFACE EQUIPMENT			
SFT-281 6250 SFT-178 6250 GSR-U 135 WITM (DTS)-A			

DOWNHOLE EQUIPMENT			
LEH-QT		29.91	
LEH-QT			
DTC-H	CTEM	28.74	
ECH-KC 984	TelStatus	29.02	
	ToolStatu	28.11	
HNGS-BA	Upper_1	27.41	28.11
HNGS-BA 77	Lower_2	27.19	

HNSH-BA 79

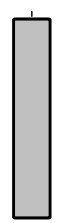
ILE-D
ILE-D 25



25.61

APS-C
APH-AC 104
APS-C 202
MNTR-F 5124

Status
Minitron
Near TD
Near Arr
Near
Far Arr
Far
Far TD

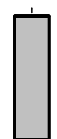


23.17

20.73
20.65
20.52
20.42

NPLC-B
NPLC-B 79
NPH-B 82

Status

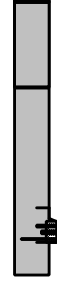


19.23

18.00

HLDS
GSR-Z 2326
HLDV-D 35
HLDS-D 35
HEH-H
HLDP-C 35

Caliper
SS LS Status



16.78

12.73

DTA-A
ECH-KE 8455
DTA-A



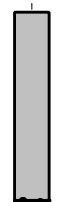
11.96

GPIT-A/B
GPIC-A 719
GPIH-A



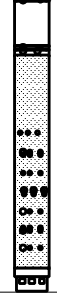
10.74

DIT-E
DIC-EB 438
MIH-ZA 417
DIS-HB 442



9.52

SP
Deep Ind
Aux Meas SFL
Med Ind
HV DF
Status GPIT
Tension



3.15
2.90
1.98
1.83
0.00

TOOL ZERO

MAXIMUM STRING DIAMETER 3.88 IN
MEASUREMENTS RELATIVE TO TOOL ZERO
ALL LENGTHS IN METERS

Input DLIS Files

DEFAULT PI_LDL_APS_NGS_017LUP FN:16 PRODUCER 20-Apr-2005 19:54 1869.9 M 1636.1 M

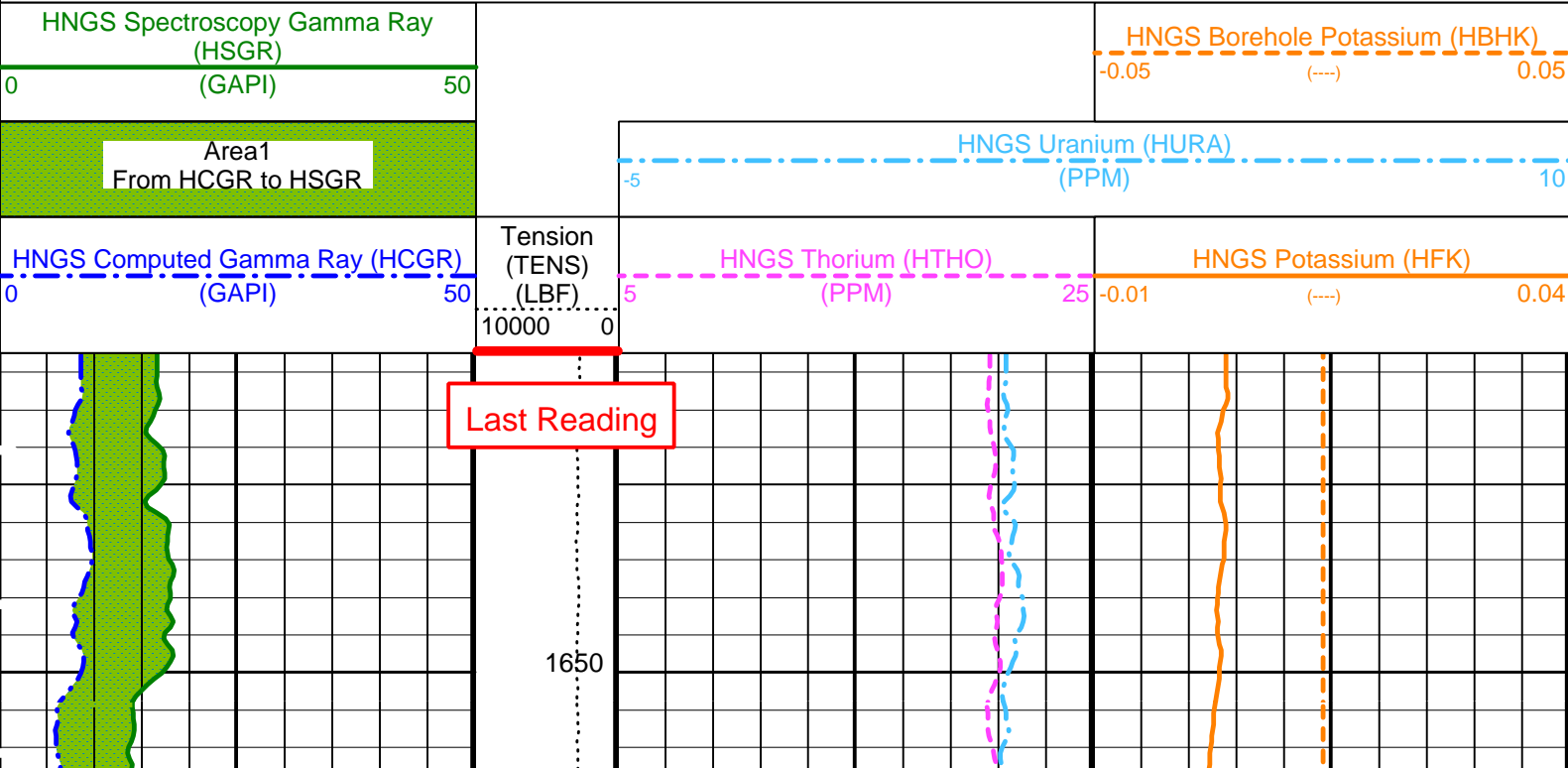
OP System Version: 12C0-301
MCM

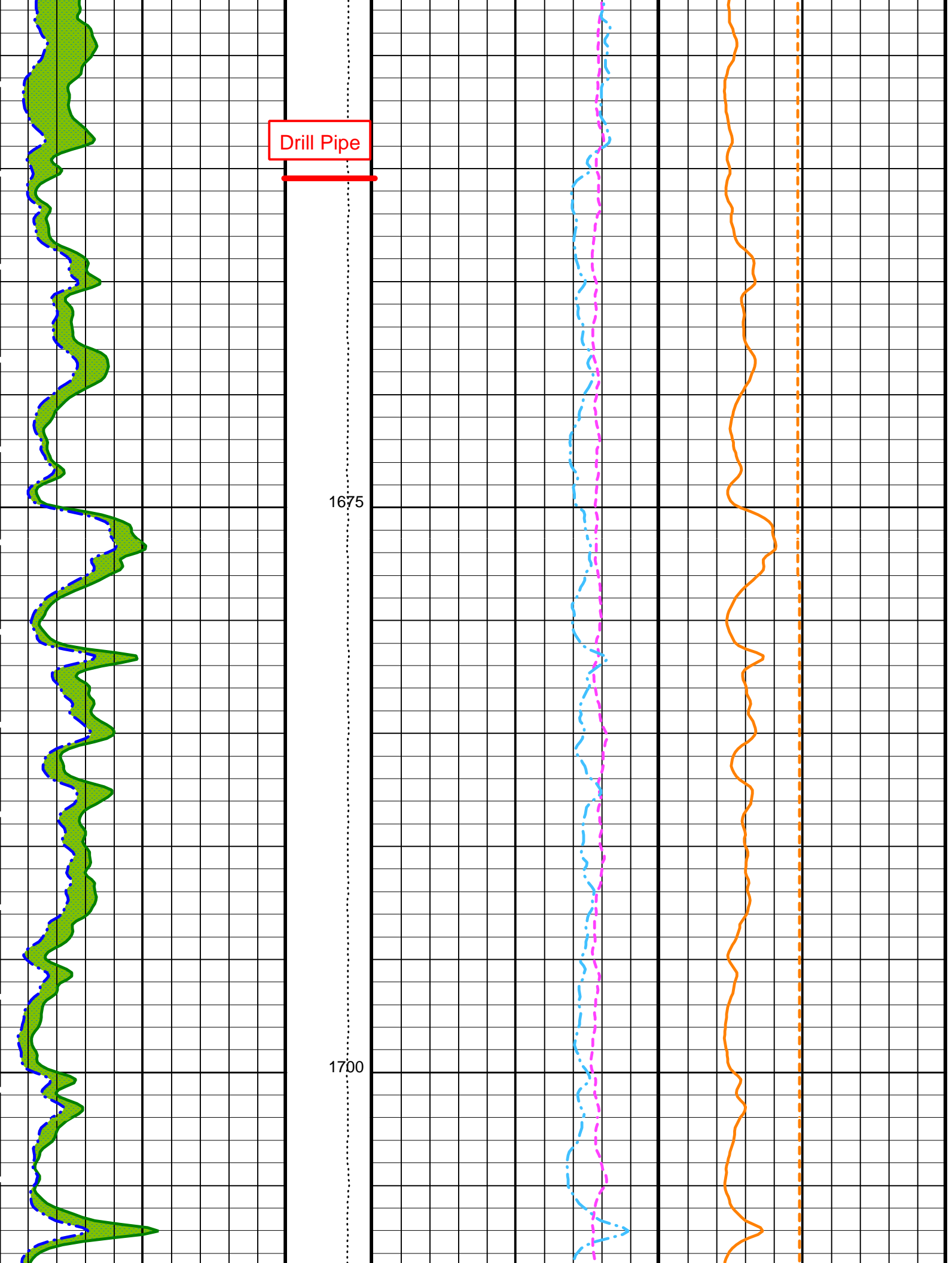
MAIN UP LOG

DIT-E	12C0-301	GPIT-A/B	12C0-301
DTA-A	12C0-301	HLDS	12C0-301
NPLC-B	12C0-301	APS-C	12C0-301
HNGS-BA	12C0-301	DTC-H	12C0-301

PIP SUMMARY

Time Mark Every 60 S

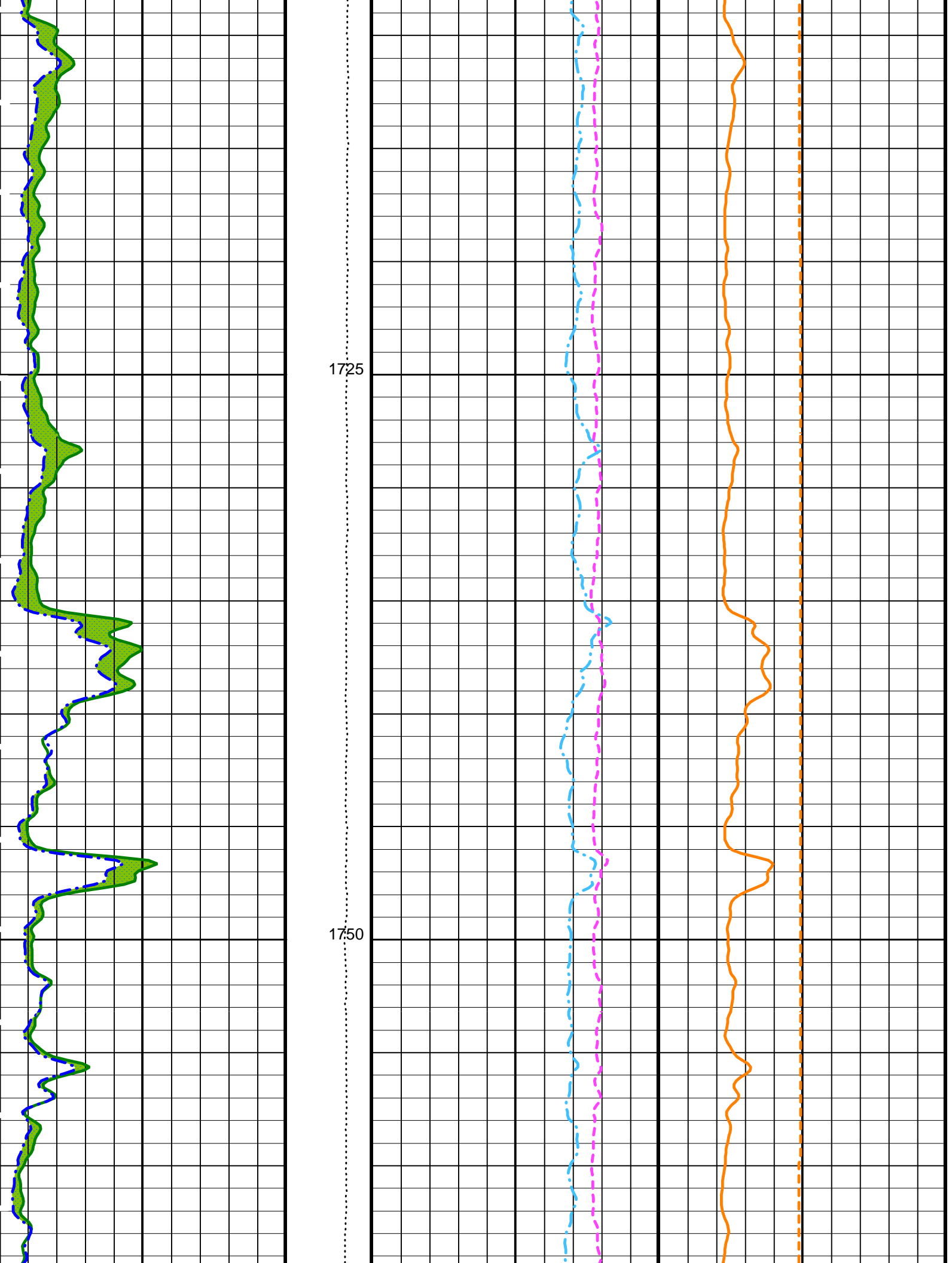


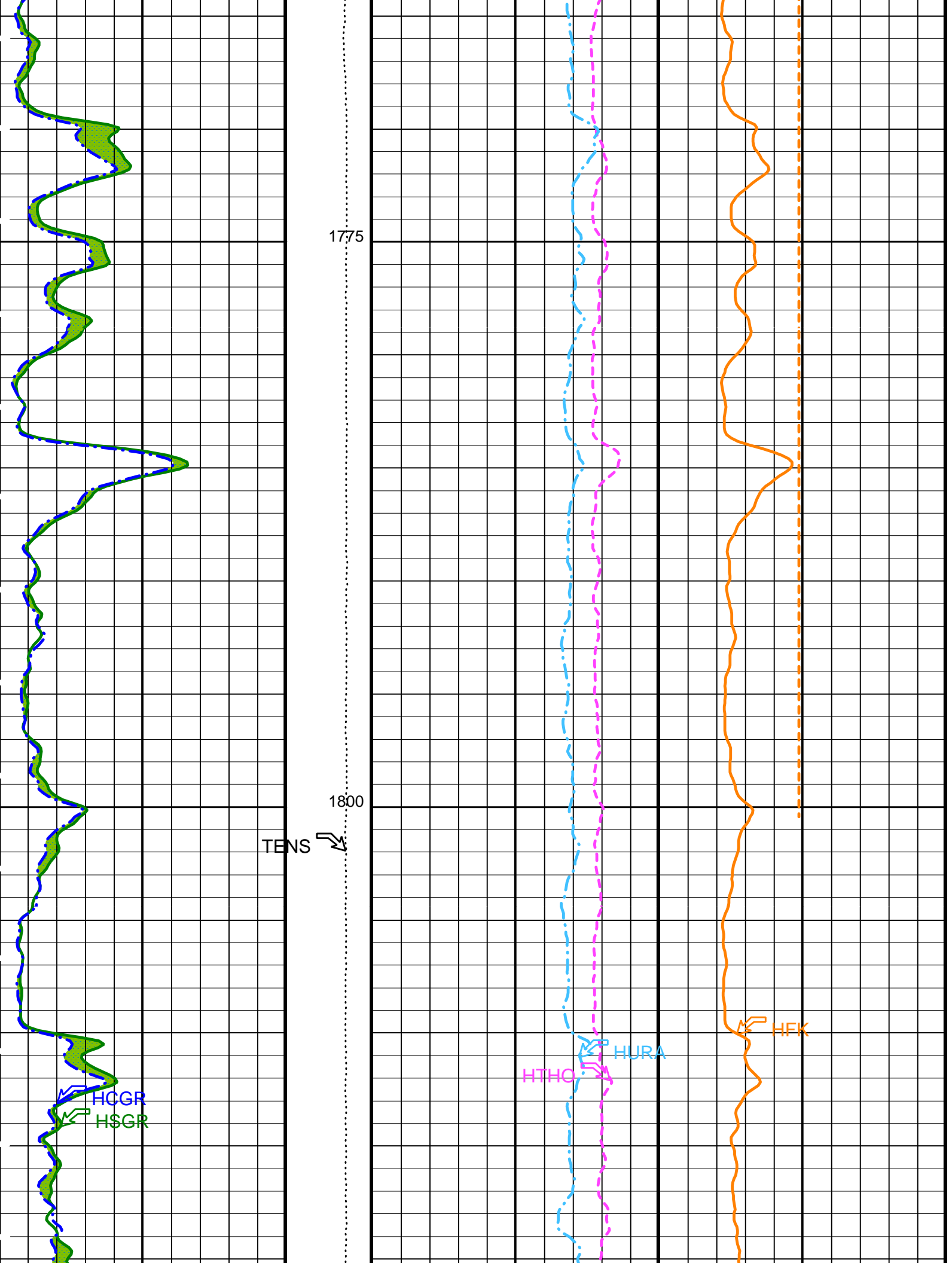


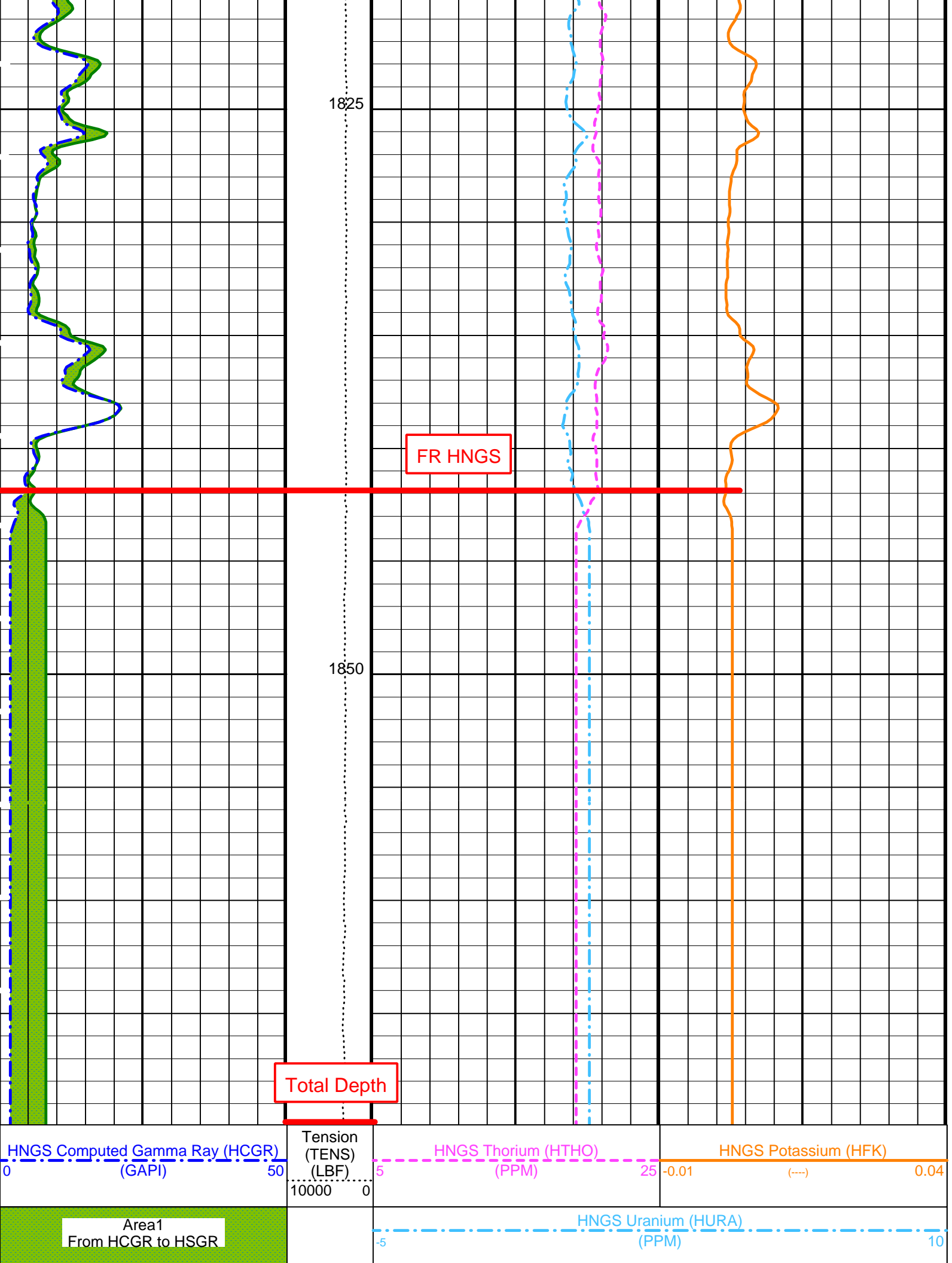
Drill Pipe

1675

1700







1825

FR HNGS

1850

Total Depth

HNGS Computed Gamma Ray (HCGR)
(GAPI)

Tension
(TENS)
(LBF)

HNGS Thorium (HTHO)
(PPM)

HNGS Potassium (HFK)

0 50

10000 0

5 25

-0.01 0.04

Area1
From HCGR to HSGR

HNGS Uranium (HURA)
(PPM)

-5

10

PIP SUMMARY

Time Mark Every 60 S

Parameters

DLIS Name	Description	Value	
DIT-E: Dual Induction - E			
BHS	Borehole Status	OPEN	
GCSE	Generalized Caliper Selection	BS	
APS-C: Accelerator-Porosity Tool			
BHS	Borehole Status	OPEN	
GCSE	Generalized Caliper Selection	BS	
HNGS-BA: Hostile Natural Gamma Ray Sonde			
BAR1	HNGS Detector 1 Barite Constant	1	
BAR2	HNGS Detector 2 Barite Constant	1	
BHK	HNGS Borehole Potassium Correction Concentration	0	
BHS	Borehole Status	OPEN	
CSD1	Inner Casing Outer Diameter	0	IN
CSD2	Outer Casing Outer Diameter	0	IN
CSW1	Inner Casing Weight	0	LB/F
CSW2	Outer Casing Weight	0	LB/F
DBCC	HNGS Barite Constant Correction Flag	NONE	
GCSE	Generalized Caliper Selection	BS	
H1P	HNGS Detector 1 Allow/Disallow In Processing	ALLOW	
H2P	HNGS Detector 2 Allow/Disallow In Processing	ALLOW	
HABK	HNGS Borehole Potassium Running Average	-0.0017651	
HALF	HNGS Alpha Filter Length	60	IN
HCRB	HNGS Apply Borehole Potassium Correction	NONE	
HMWM	Mud Weighting Material	NATU	
HNPE	HNGS Processing Enable	YES	
S1BI	HNGS Detector 1 Calibration Bismuth Count Rate	1.3	CPS
S2BI	HNGS Detector 2 Calibration Bismuth Count Rate	1.3	CPS
SGRC	HNGS Standard Gamma-Ray Correction Flag	YES	
TPOS	Tool Position	ECCE	
VBA1	HNGS Detector 1 Variable Barite Factor Running Average	1.01394	
VBA2	HNGS Detector 2 Variable Barite Factor Running Average	0.960107	
HOLEV: Integrated Hole/Cement Volume			
BHS	Borehole Status	OPEN	
GCSE	Generalized Caliper Selection	BS	
System and Miscellaneous			
BS	Bit Size	9.875	IN
DFD	Drilling Fluid Density	1.07	G/C3
DO	Depth Offset for Playback	0.0	M
PP	Playback Processing	RECOMPUTE	

Format: HNGSYields Vertical Scale: 1:200 Graphics File Created: 22-Apr-2005 22:37

OP System Version: 12C0-301
MCM

DIT-E	12C0-301	GPIT-A/B	12C0-301
DTA-A	12C0-301	HLDS	12C0-301
NPLC-B	12C0-301	APS-C	12C0-301
HNGS-BA	12C0-301	DTC-H	12C0-301

Input DLIS Files

DEFAULT	PI_LDL_APS_NGS_017LUP	FN:16	PRODUCER	20-Apr-2005 19:54	1869.9 M	1636.1 M
---------	-----------------------	-------	----------	-------------------	----------	----------

Company: Lamont Doherty



Well: IODP EXP 306 Site 642 E

Field: Voring Plateau

Country: Norway

Ocean: Atlantic Ocean

Natural Gamma Ray

