



**DISCLAIMER**  
 THE USE OF AND RELIANCE UPON THIS RECORDED-DATA BY THE HEREIN NAMED COMPANY (AND ANY OF ITS AFFILIATES, PARTNERS, REPRESENTATIVES, AGENTS, CONSULTANTS AND EMPLOYEES) IS SUBJECT TO THE TERMS AND CONDITIONS AGREED UPON BETWEEN SCHLUMBERGER AND THE COMPANY, INCLUDING: (a) RESTRICTIONS ON USE OF THE RECORDED-DATA; (b) DISCLAIMERS AND WAIVERS OF WARRANTIES AND REPRESENTATIONS REGARDING COMPANY'S USE OF AND RELIANCE UPON THE RECORDED-DATA; AND (c) CUSTOMER'S FULL AND SOLE RESPONSIBILITY FOR ANY INFERENCE DRAWN OR DECISION MADE IN CONNECTION WITH THE USE OF THIS RECORDED-DATA.

**OTHER SERVICES1**  
 OS1: none  
 OS2:  
 OS3:  
 OS4:  
 OS5:

**OTHER SERVICES2**  
 OS1:  
 OS2:  
 OS3:  
 OS4:  
 OS5:

**REMARKS: RUN NUMBER 1**  
 Hole Cored With APC.  
 All depths in Meters Below Rig Floor (MBRF).  
 Hole flushed with Sepiolite  
 Sea Floor Driller 3424.6 MBRF.  
 Sea Floor Logger- 3423 MBRF.  
 Total Depth Driller- 3727 MBRF.  
 Total Depth Logger- 3724 MBRF.  
 Casing Bottom Driller-3489.9 MBRF.  
 Casing Bottom Logger- 3489 MBRF.  
 No Repeat.  
 Winch test performed.

**REMARKS: RUN NUMBER 2**

**RUN 1**  
 SERVICE ORDER #:  
 PROGRAM VERSION: 12C0-301  
 FLUID LEVEL:

**RUN 2**  
 SERVICE ORDER #:  
 PROGRAM VERSION:  
 FLUID LEVEL:

LOGGED INTERVAL	START	STOP

LOGGED INTERVAL	START	STOP

## EQUIPMENT DESCRIPTION


**RUN 1**

**SURFACE EQUIPMENT**

SFT-281 6250  
 SFT-178 6250  
 GSR-U 135  
 WITM (DTS)-A

**RUN 2**

**DOWNHOLE EQUIPMENT**

LEH-QT  29.91  
 LEH-QT  
 DTC-H CTEM 28.74  
 ECH-KC TelStatus 29.02  
 ToolStatu 28.11  
 HNGS-BA Upper\_1 27.41 28.11  
 HNGS-BA 77 Lower\_2 27.19

INPLC-A 79

HNSH-BA 79

ILE-D

ILE-D 25

APS-C

APH-AC 104

APS-C 202

MNTR-F 5124

NPLC-B

NPLC-B 79

NPH-B 82

HLDS

GSR-Z 2326

HLDV-D 35

HLDS-D 35

HEH-H 35

HLDP-C 35

DTA-A

ECH-KE 8231

DTA-A 8231

GPIT-A/B

GPIC-A 719

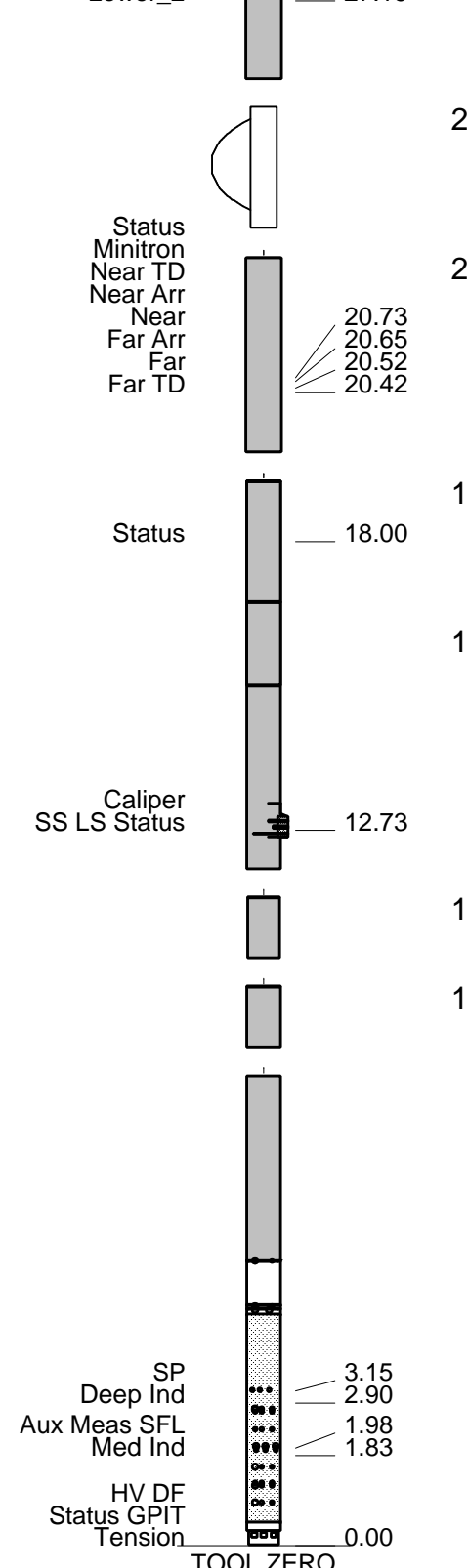
GPIH-A

DIT-E

DIC-EB 438

MIH-ZA 417

DIS-HB 442



MAXIMUM STRING DIAMETER 3.88 IN  
 MEASUREMENTS RELATIVE TO TOOL ZERO  
 ALL LENGTHS IN METERS

## Input DLIS Files

DEFAULT      PI\_LDL\_APS\_NGS\_062LUP      FN:10    PRODUCER    31-Mar-2005 07:28    3723.9 M    3409.3 M

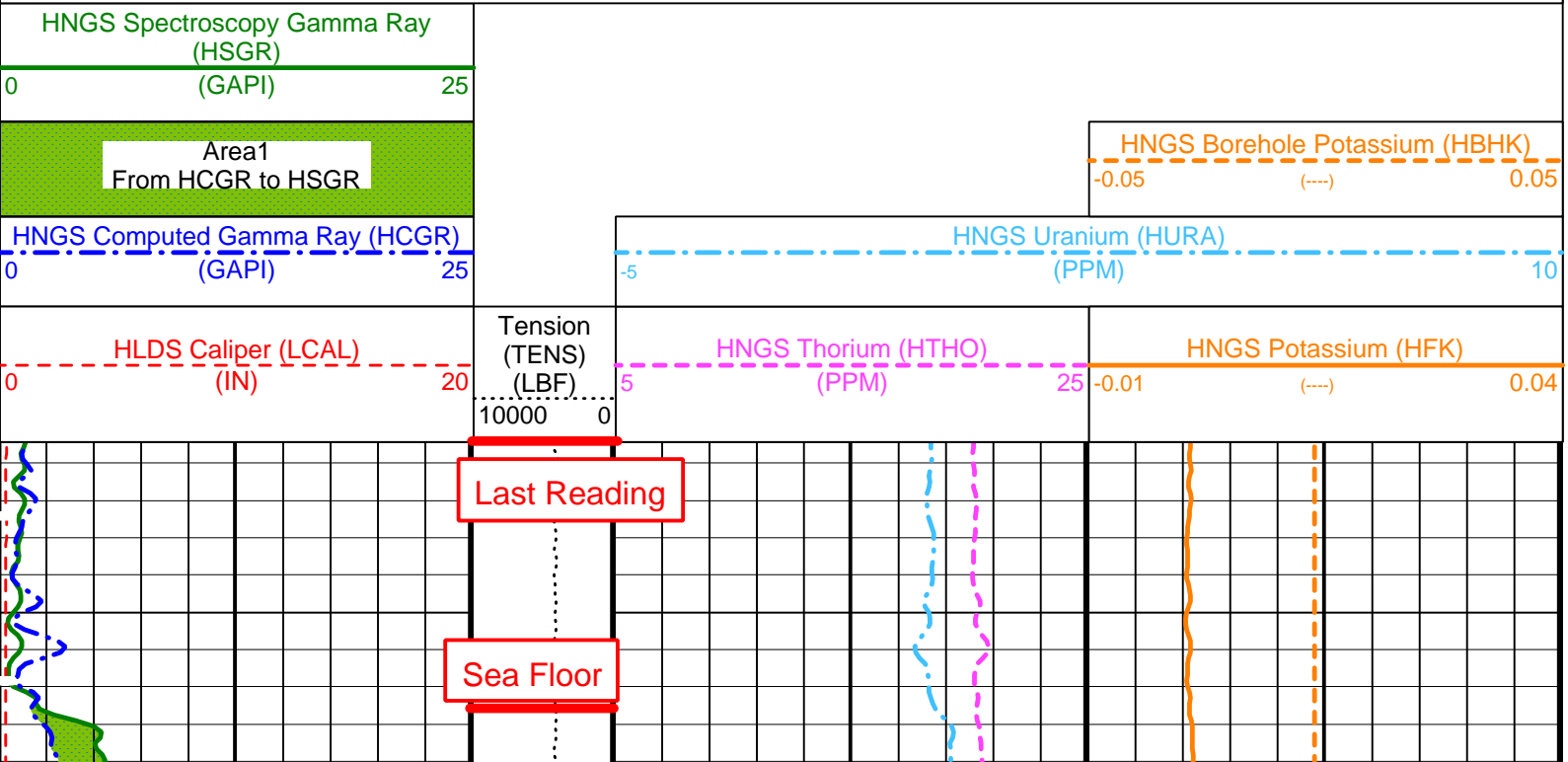
OP System Version: 12C0-301  
MCM

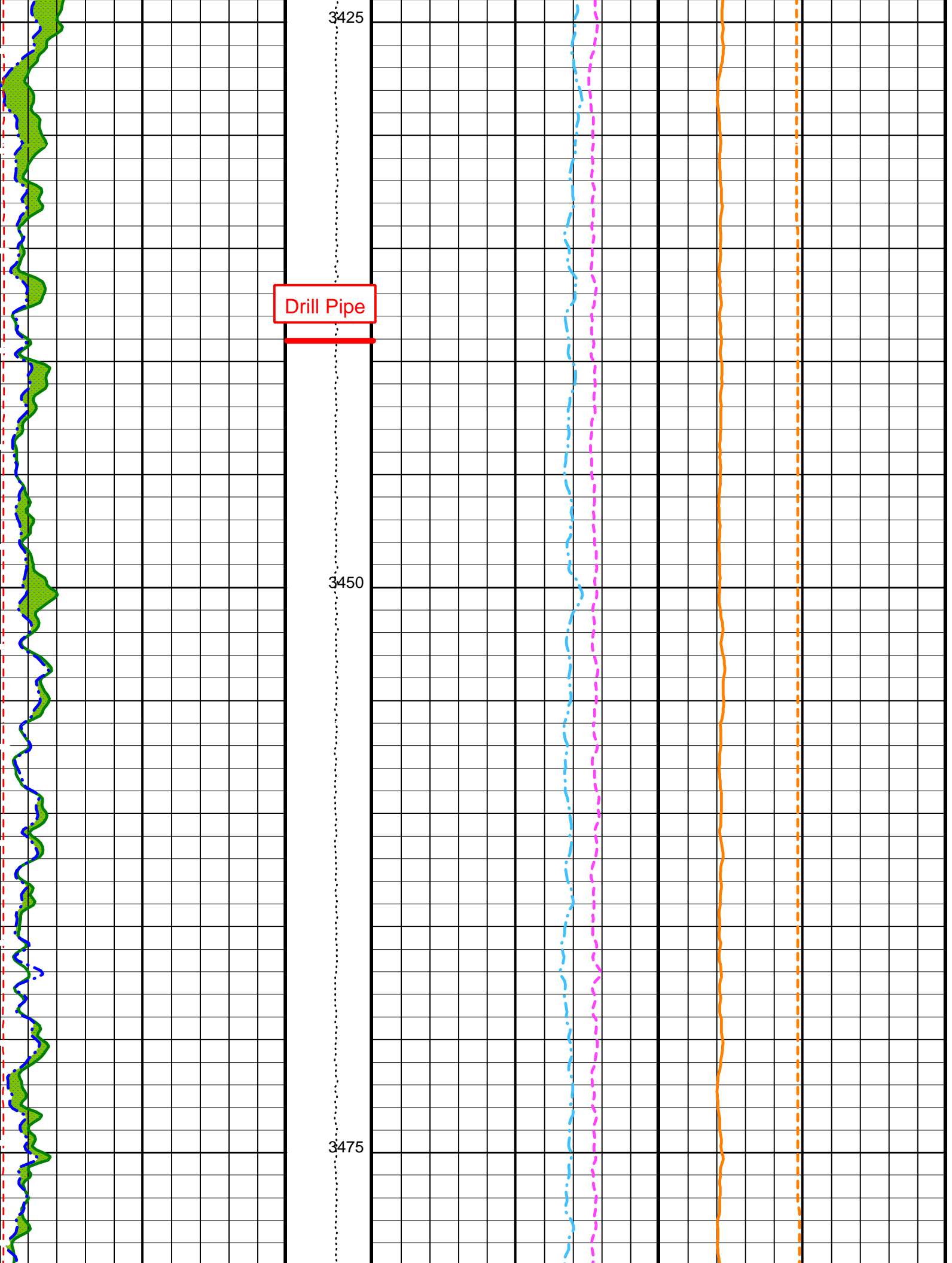
Main Up Log

DIT-E	12C0-301	GPIT-A/B	12C0-301
DTA-A	12C0-301	HLDS	12C0-301
NPLC-B	12C0-301	APS-C	12C0-301
HNGS-BA	12C0-301	DTC-H	12C0-301

### PIP SUMMARY

Time Mark Every 60 S



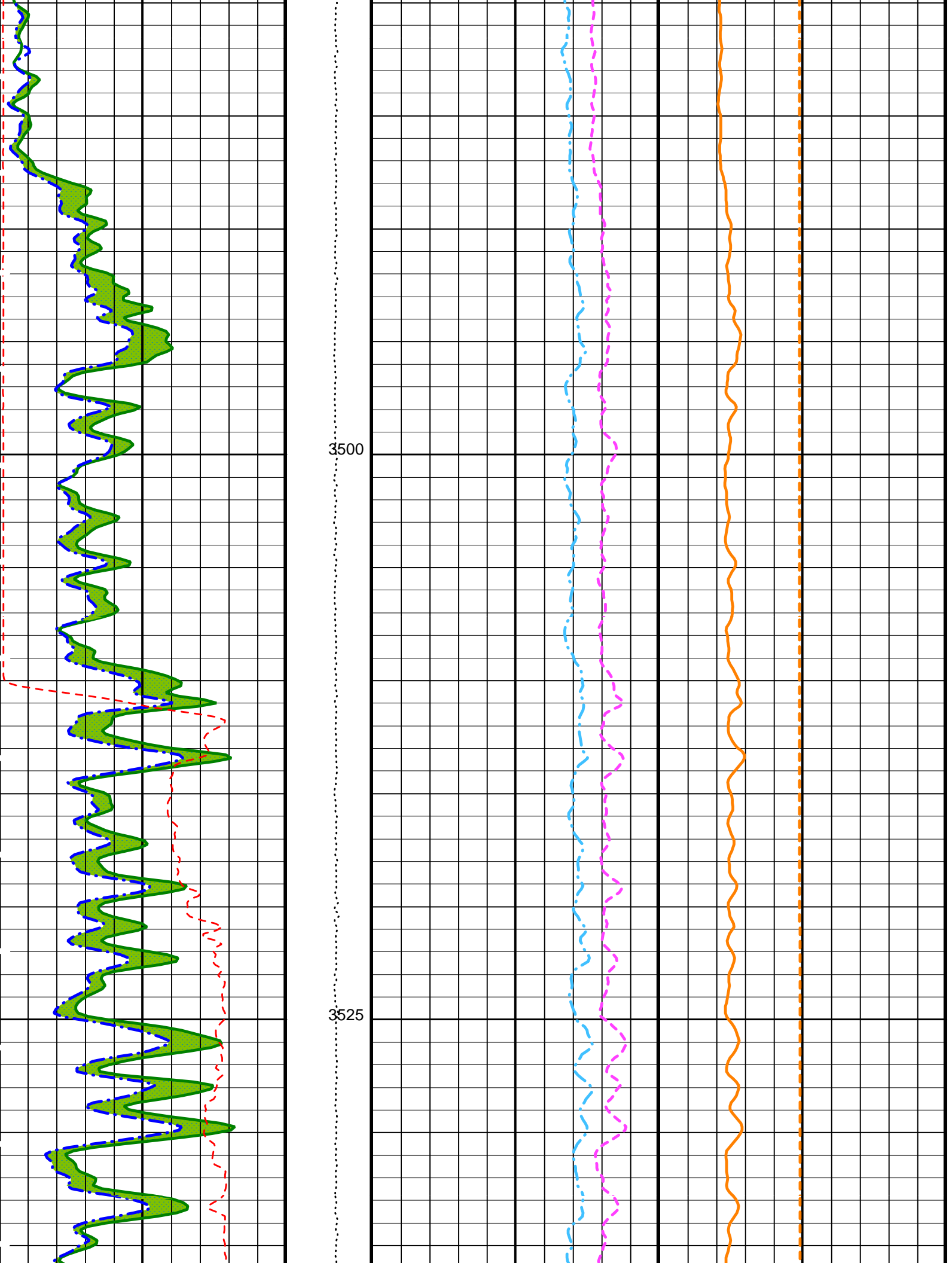


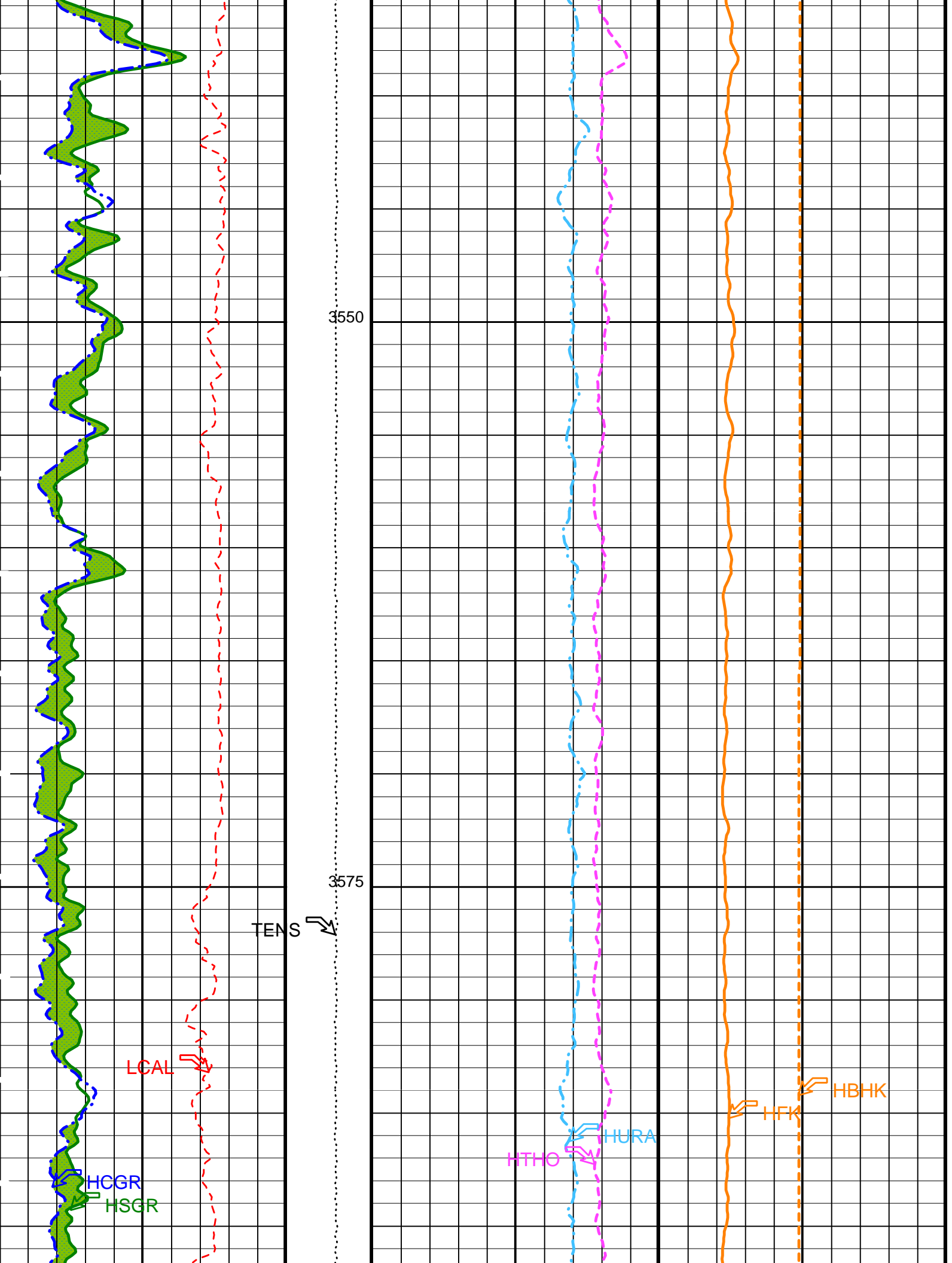
Drill Pipe

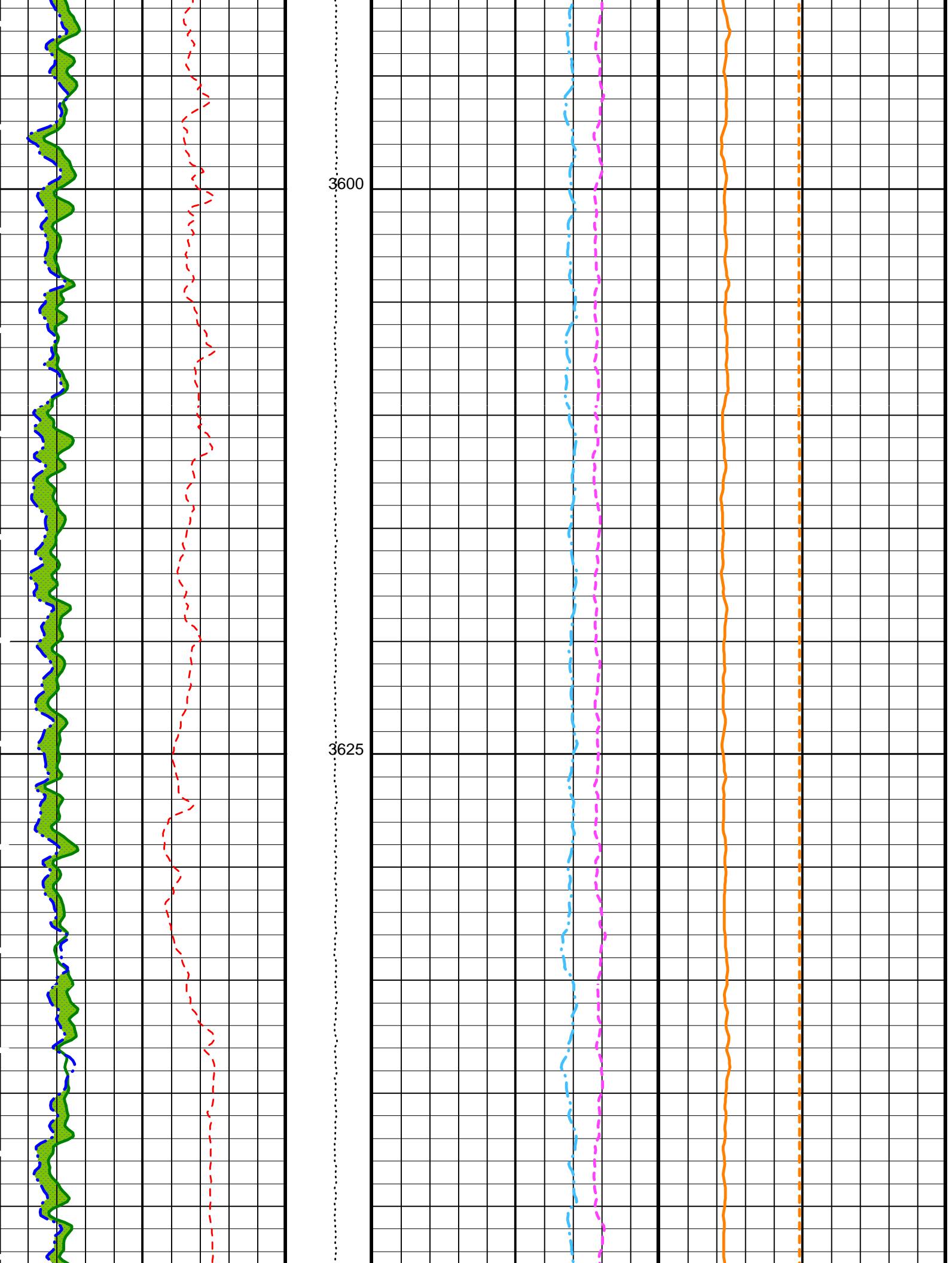
3425

3450

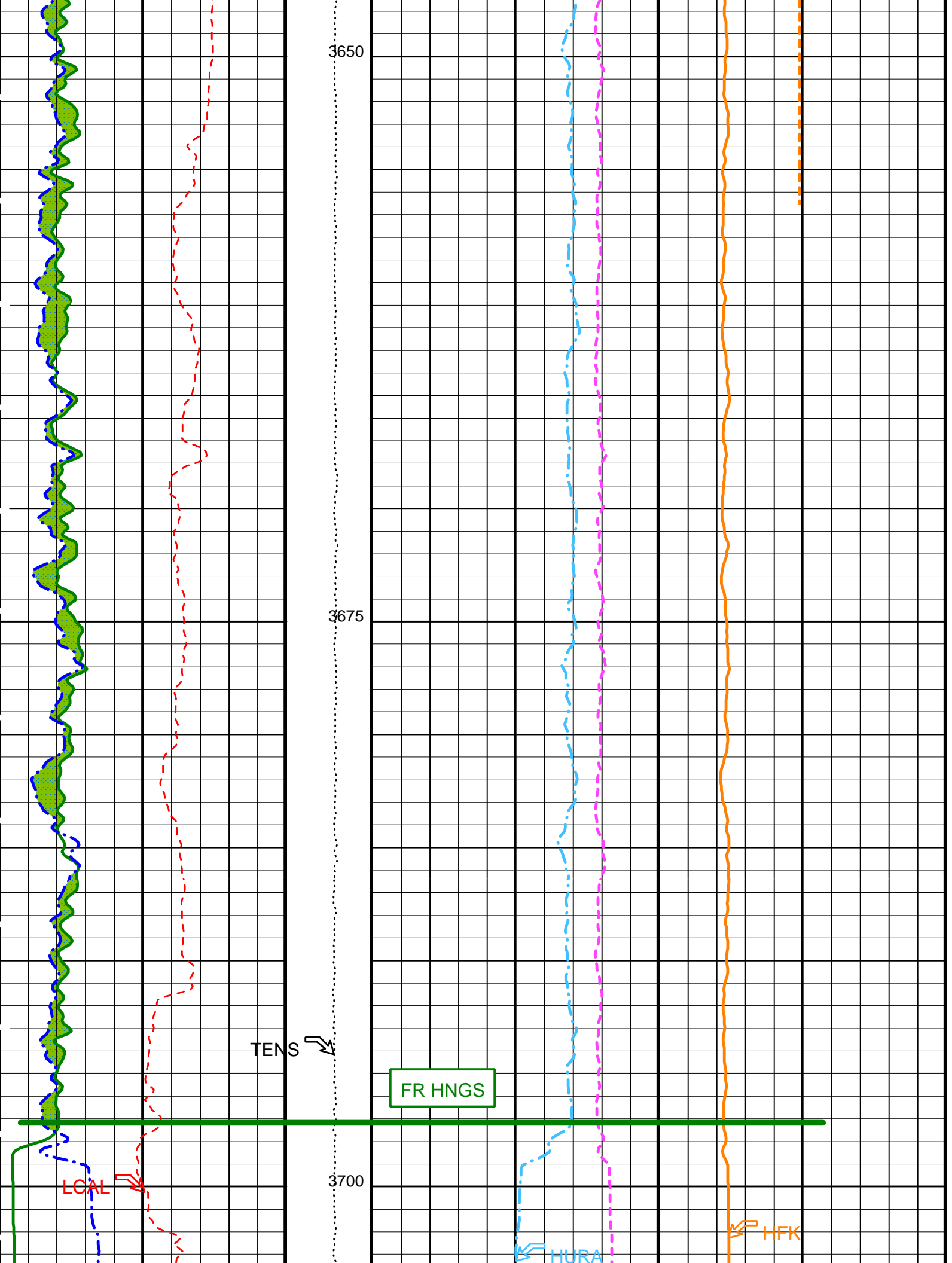
3475

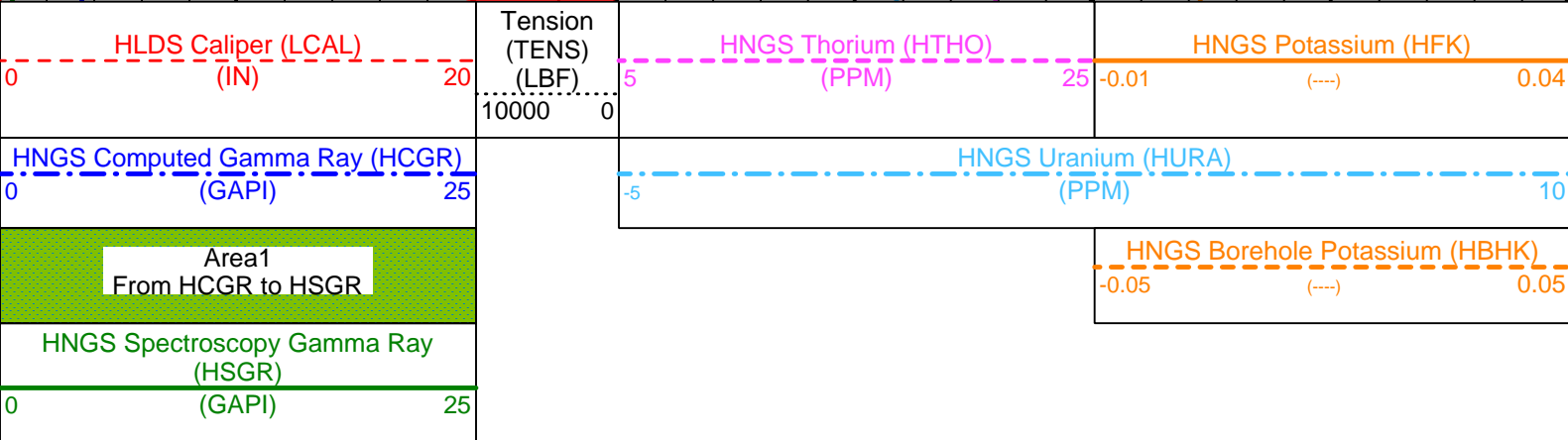
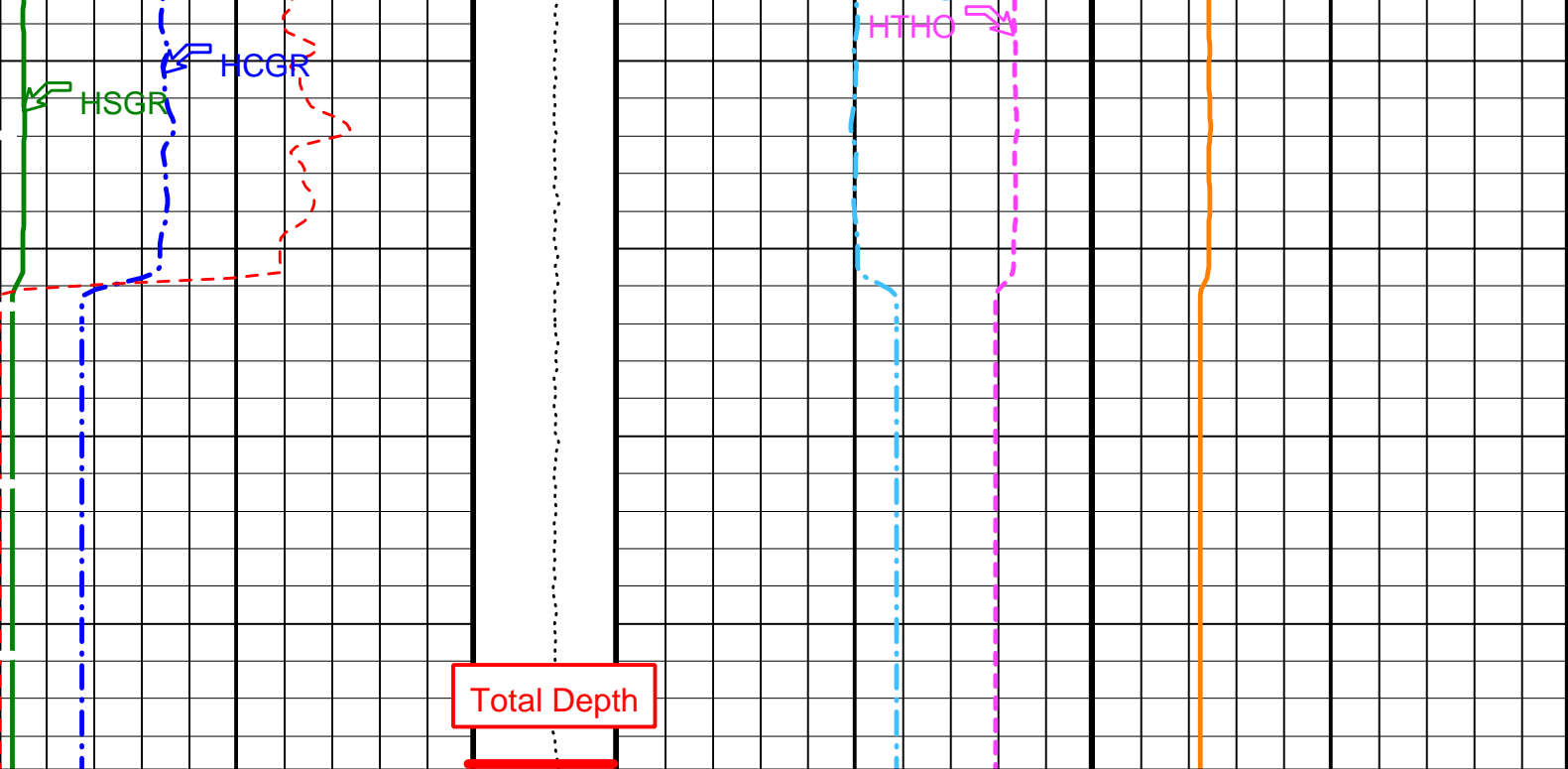












PIP SUMMARY

▶ Time Mark Every 60 S

Parameters		
DLIS Name	Description	Value
BHS	DIT-E: Dual Induction - E	
BHS	Borehole Status	OPEN
GCSE	Generalized Caliper Selection	BS
BHS	APS-C: Accelerator-Porosity Tool	
BHS	Borehole Status	OPEN
GCSE	Generalized Caliper Selection	BS
BHS	HNGS-BA: Hostile Natural Gamma Ray Sonde	
BAR1	HNGS Detector 1 Barite Constant	1
BAR2	HNGS Detector 2 Barite Constant	1
BHK	HNGS Borehole Potassium Correction Concentration	0
BHS	Borehole Status	OPEN
CSD1	Inner Casing Outer Diameter	0 IN
CSD2	Outer Casing Outer Diameter	0 IN
CSW1	Inner Casing Weight	0 LB/F
CSW2	Outer Casing Weight	0 LB/F
DBCC	HNGS Barite Constant Correction Flag	NONE
GCSE	Generalized Caliper Selection	BS
H1P	HNGS Detector 1 Allow/Disallow In Processing	ALLOW
H2P	HNGS Detector 2 Allow/Disallow In Processing	ALLOW
HABK	HNGS Borehole Potassium Running Average	-0.000377132
HALF	HNGS Alpha Filter Length	60 IN
HCRB	HNGS Apply Borehole Potassium Correction	NONE
HMWM	Mud Weighting Material	NATU
HNPE	HNGS Processing Enable	YES
S1BI	HNGS Detector 1 Calibration Bismuth Count Rate	1.3 CPS
S2BI	HNGS Detector 2 Calibration Bismuth Count Rate	1.3 CPS
SGRC	HNGS Standard Gamma-Ray Correction Flag	YES

TPOS	Tool Position	ECCE	
VBA1	HNGS Detector 1 Variable Barite Factor Running Average	1.00133	
VBA2	HNGS Detector 2 Variable Barite Factor Running Average	0.916166	
HOLEV: Integrated Hole/Cement Volume			
BHS	Borehole Status	OPEN	
GCSE	Generalized Caliper Selection	BS	
System and Miscellaneous			
BS	Bit Size	11.438	IN
DFD	Drilling Fluid Density	1.07	G/C3
DO	Depth Offset for Playback	0.0	M
PP	Playback Processing	NORMAL	

Format: HNGSYields      Vertical Scale: 1:200      Graphics File Created: 02-Apr-2005 12:36

## OP System Version: 12C0-301

MCM

DIT-E	12C0-301	GPIT-A/B	12C0-301
DTA-A	12C0-301	HLDS	12C0-301
NPLC-B	12C0-301	APS-C	12C0-301
HNGS-BA	12C0-301	DTC-H	12C0-301

## Input DLIS Files

DEFAULT	PI_LDL_APS_NGS_062LUP	FN:10	PRODUCER	31-Mar-2005 07:28	3723.9 M	3409.3 M
---------	-----------------------	-------	----------	-------------------	----------	----------

**Company:** Lamont Doherty

**Schlumberger**

**Well:** IODP EXP 306 Site 1313 B

**Field:** Ice-Rafted Debris

**Country:** Portugal

**Ocean:** Atlantic Ocean

Natural Gamma Ray