

DISCLAIMER

THE USE OF AND RELIANCE UPON THIS RECORDED-DATA BY THE HEREIN NAMED COMPANY (AND ANY OF ITS AFFILIATES, PARTNERS, REPRESENTATIVES, AGENTS, CONSULTANTS AND EMPLOYEES) IS SUBJECT TO THE TERMS AND CONDITIONS AGREED UPON BETWEEN SCHLUMBERGER AND THE COMPANY, INCLUDING: (a) RESTRICTIONS ON USE OF THE RECORDED-DATA; (b) DISCLAIMERS AND WAIVERS OF WARRANTIES AND REPRESENTATIONS REGARDING COMPANY'S USE OF AND RELIANCE UPON THE RECORDED-DATA; AND (c) CUSTOMER'S FULL AND SOLE RESPONSIBILITY FOR ANY INFERENCE DRAWN OR DECISION MADE IN CONNECTION WITH THE USE OF THIS RECORDED-DATA.

OTHER SERVICES1

OS1: DSI
OS2: TCOM
OS3: WST
OS4:
OS5:

OTHER SERVICES2

OS1:
OS2:
OS3:
OS4:
OS5:

REMARKS: RUN NUMBER 1

Parameters and presentation as per IODP standards
Tool ran as per tool sketch below
TD not reached due to hole conditions
Hole flushed with Sepiolite.

REMARKS: RUN NUMBER 2

RUN 1
SERVICE ORDER #:
PROGRAM VERSION: 12C0-301
FLUID LEVEL:

RUN 2
SERVICE ORDER #:
PROGRAM VERSION:
FLUID LEVEL:

LOGGED INTERVAL	START	STOP


LOGGED INTERVAL	START	STOP

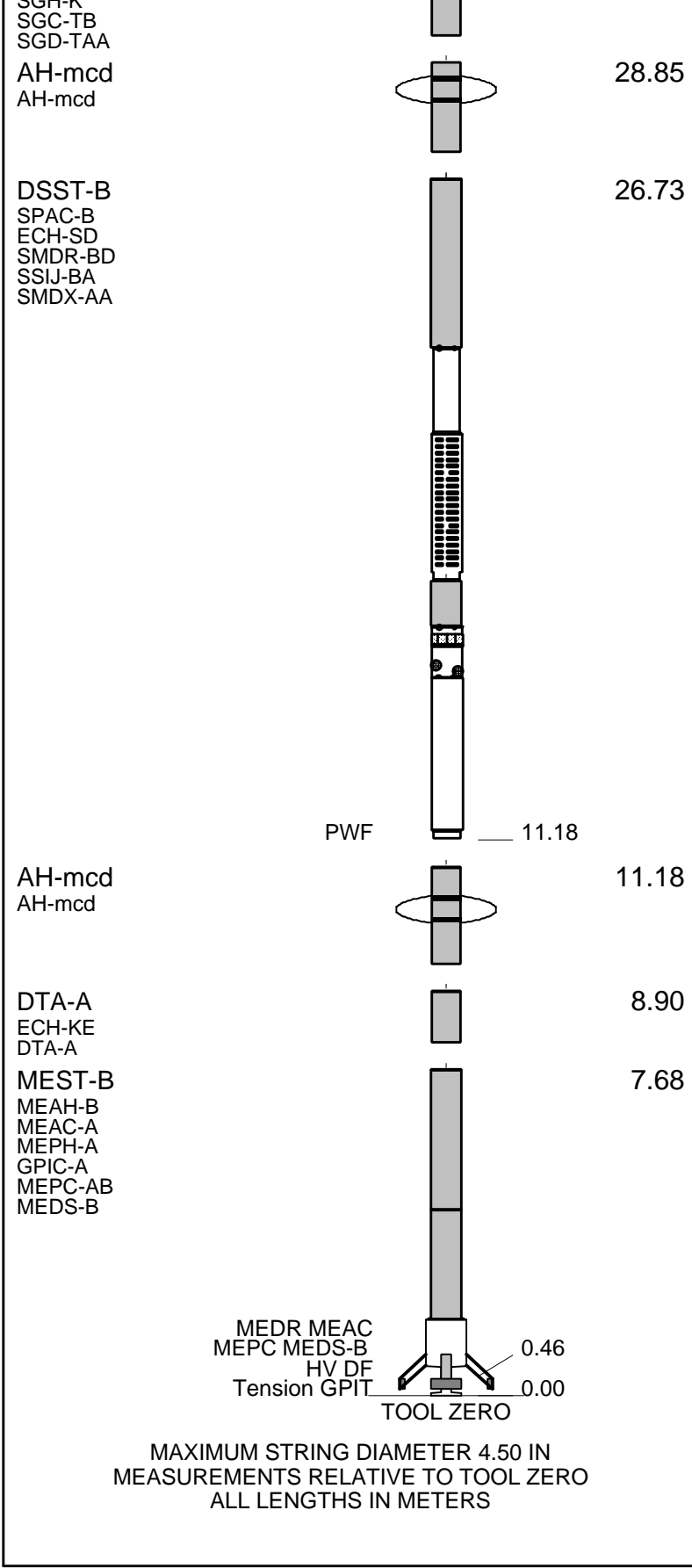
EQUIPMENT DESCRIPTION

RUN 1
SURFACE EQUIPMENT
GSR-U/Y
WITM (DTS)-A

RUN 2

DOWNHOLE EQUIPMENT

LEH-QT		32.33
LEH-QT		
DTC-H	CTEM	31.16
ECH-KC	TelStatus	31.44
	ToolStatu	30.52
SGT-N	Gamma Ray	30.25
SCH-K		30.52



Production String	(in)	(m)	Well Schematic	(m)	(in)	Casing String
	OD	ID		MD	MD	

Kelly Bushing Elevation
Derrick Floor Elevation

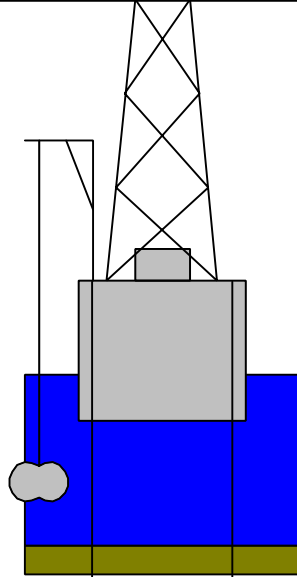
11.3
11.0

Mean Sea Level

0.0

Seismic Gun depth below MSL

2.0



0.0 5.000

Casing String



805.0 9.875

Borehole Segment

892.0 5.000

Casing Shoe

FMS_DSI_008LUP FMS4 .DYN
Horizontal Scale: 1 : 12.409
Orientation North

0 120 240 360

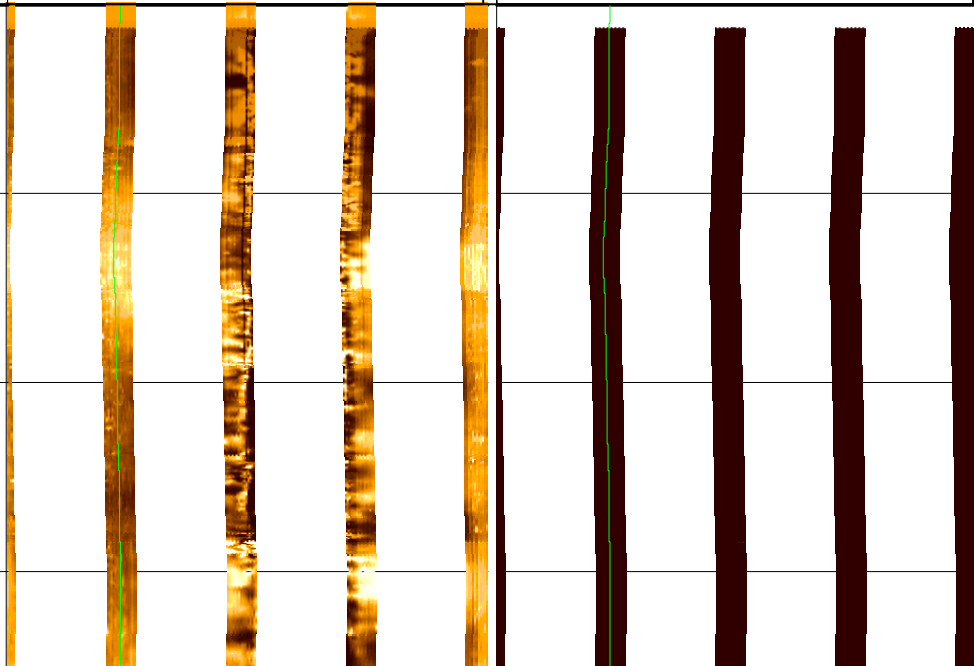
Resistive FMS4 Image Conductive



FMS_DSI_008LUP FMS4 .STA
Horizontal Scale: 1 : 12.409
Orientation North

0 120 240 360

Resistive FMS4 Image Conductive



MD
1 : 40
m
110

112

114

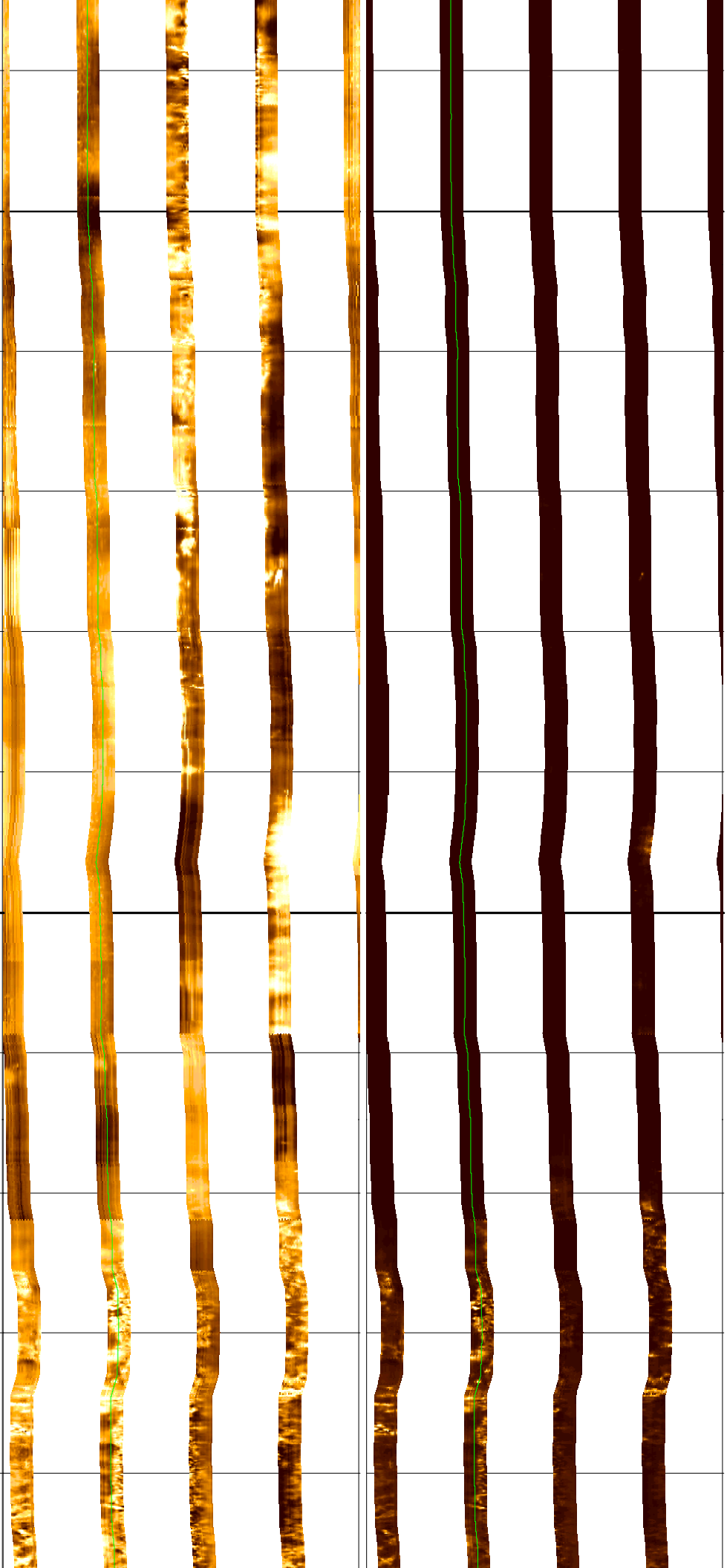
116

118

120

122

124



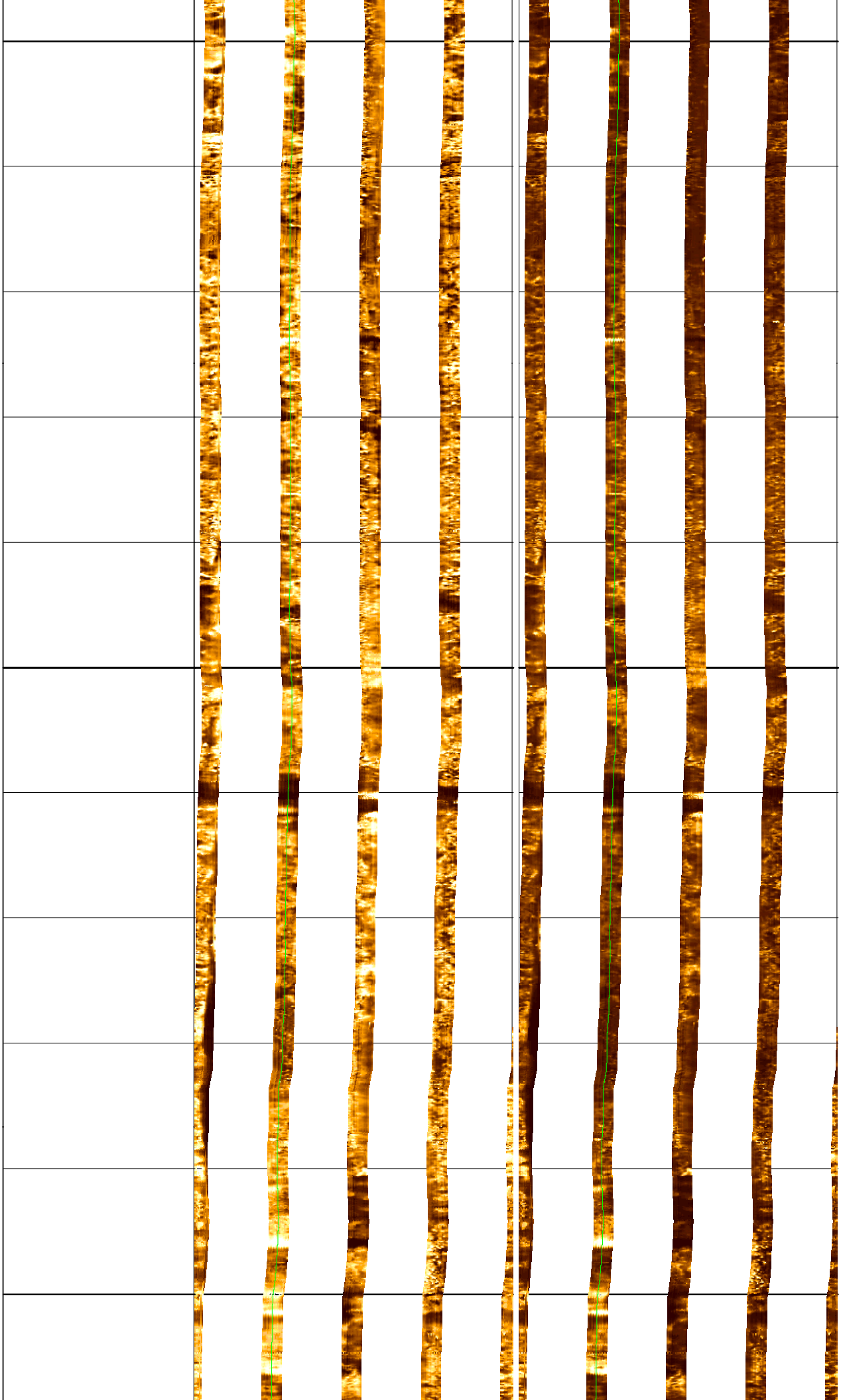
126

128

130

132

134



136

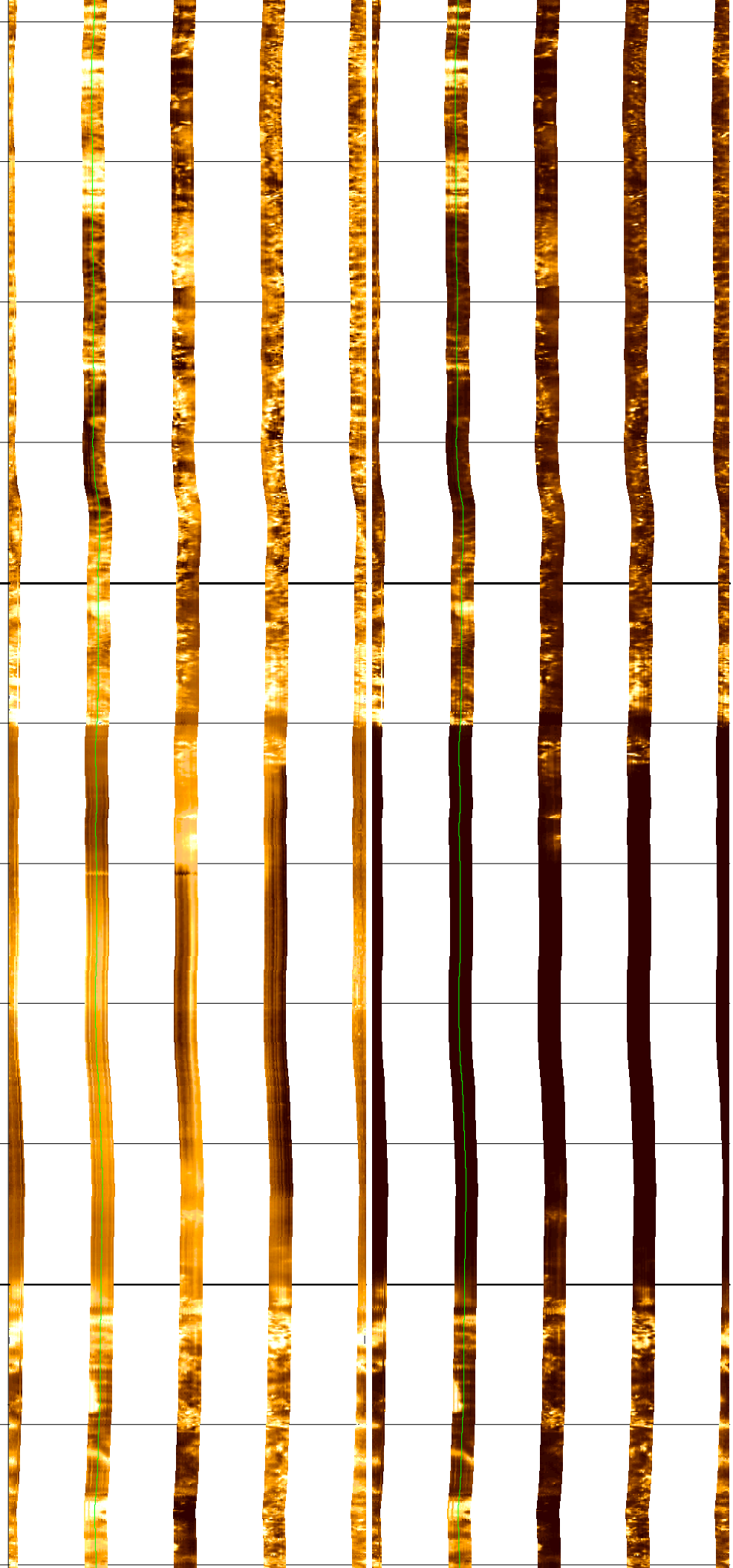
138

140

142

144

146



148

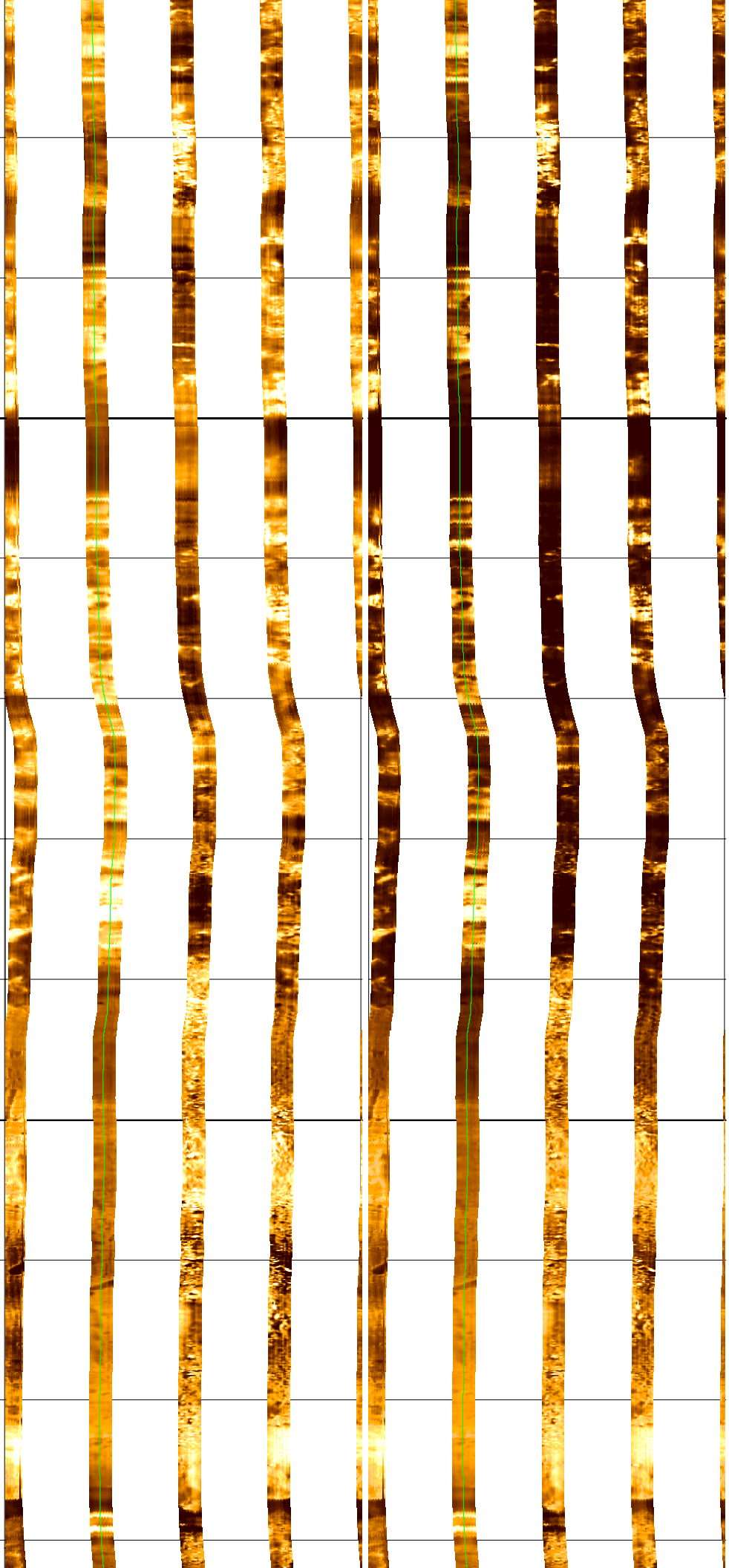
150

152

154

156

158



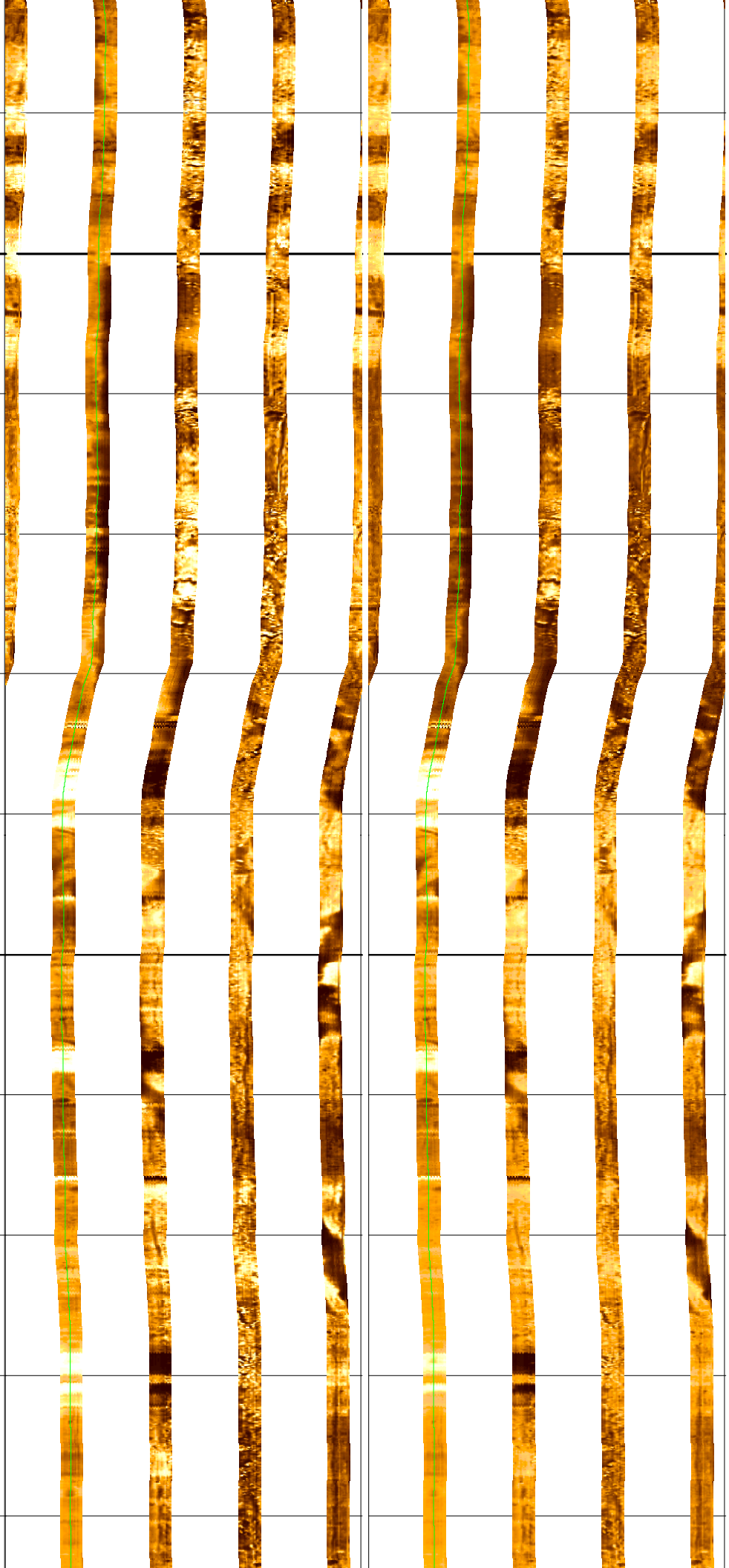
160

162

164

166

168



170

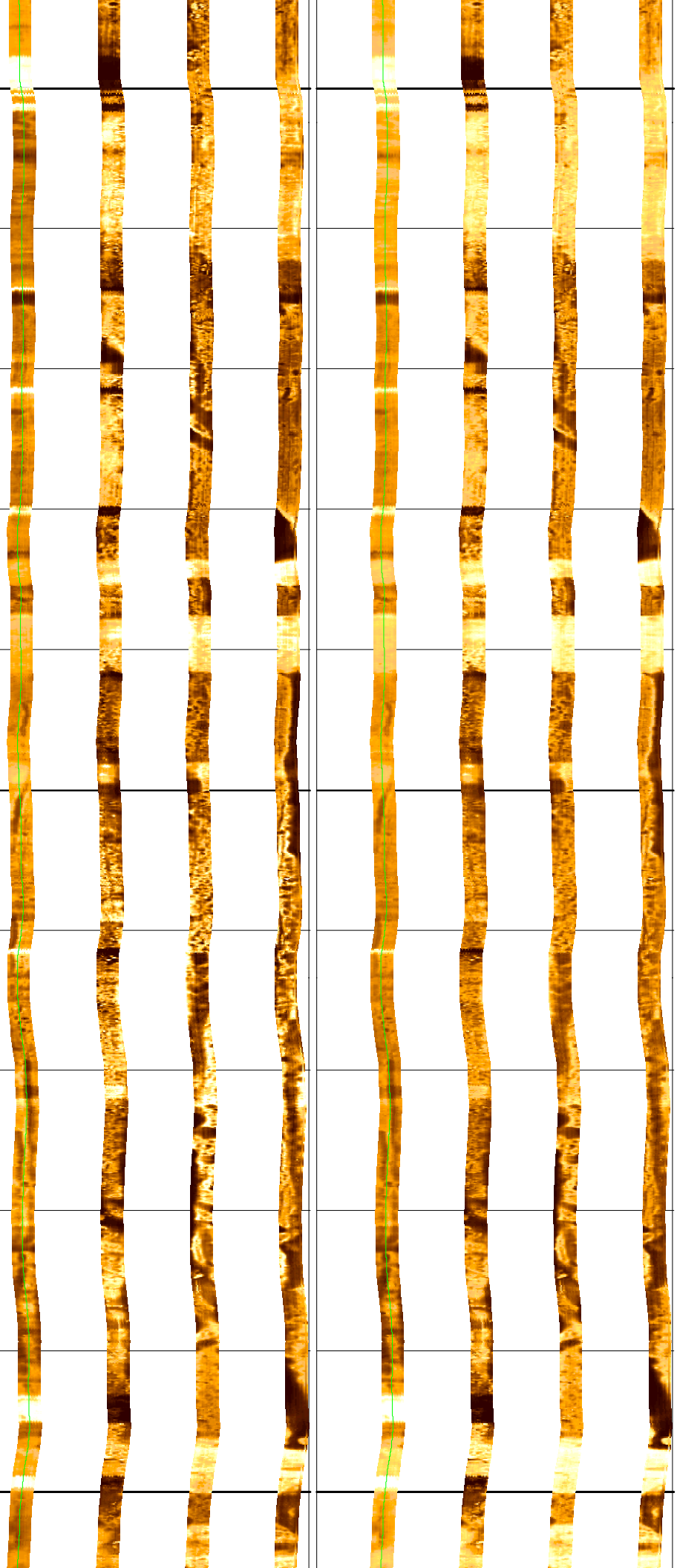
172

174

176

178

180



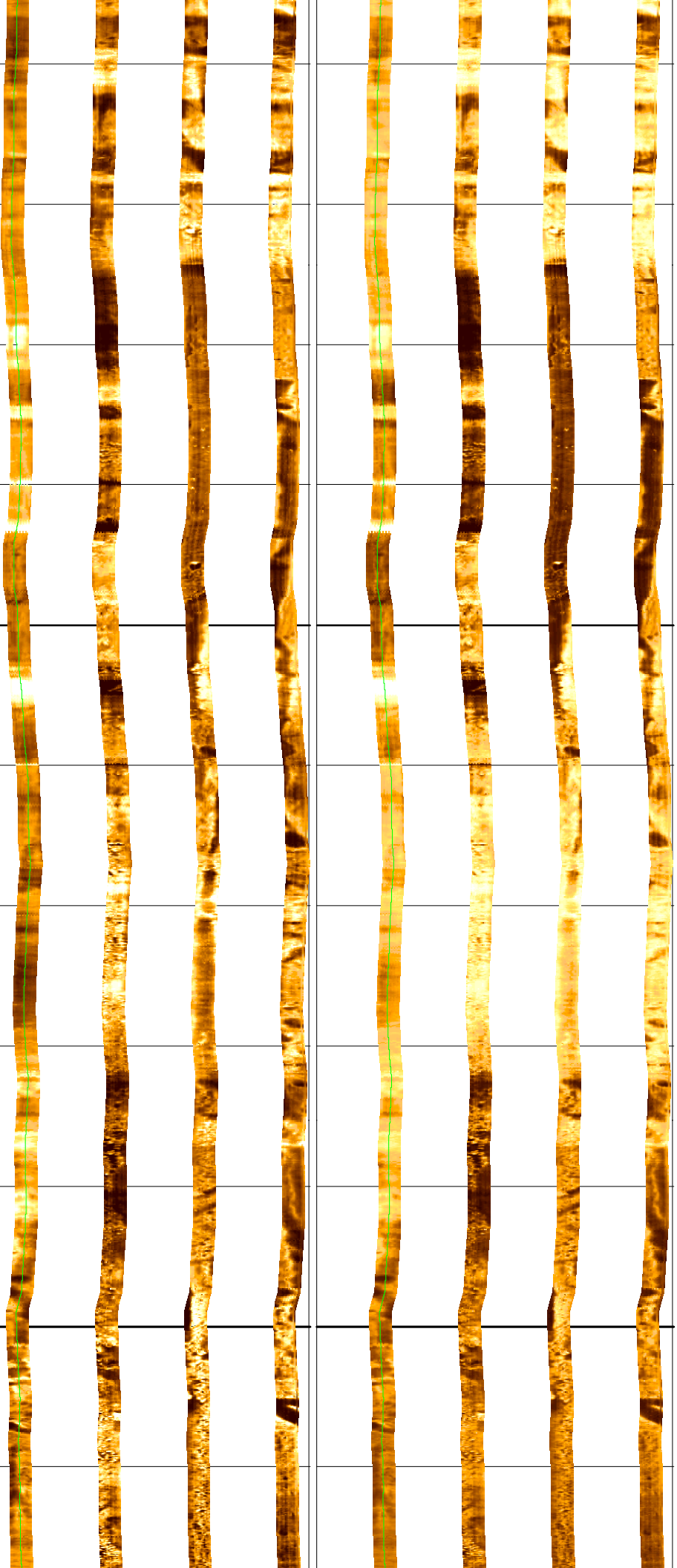
182

184

186

188

190



192

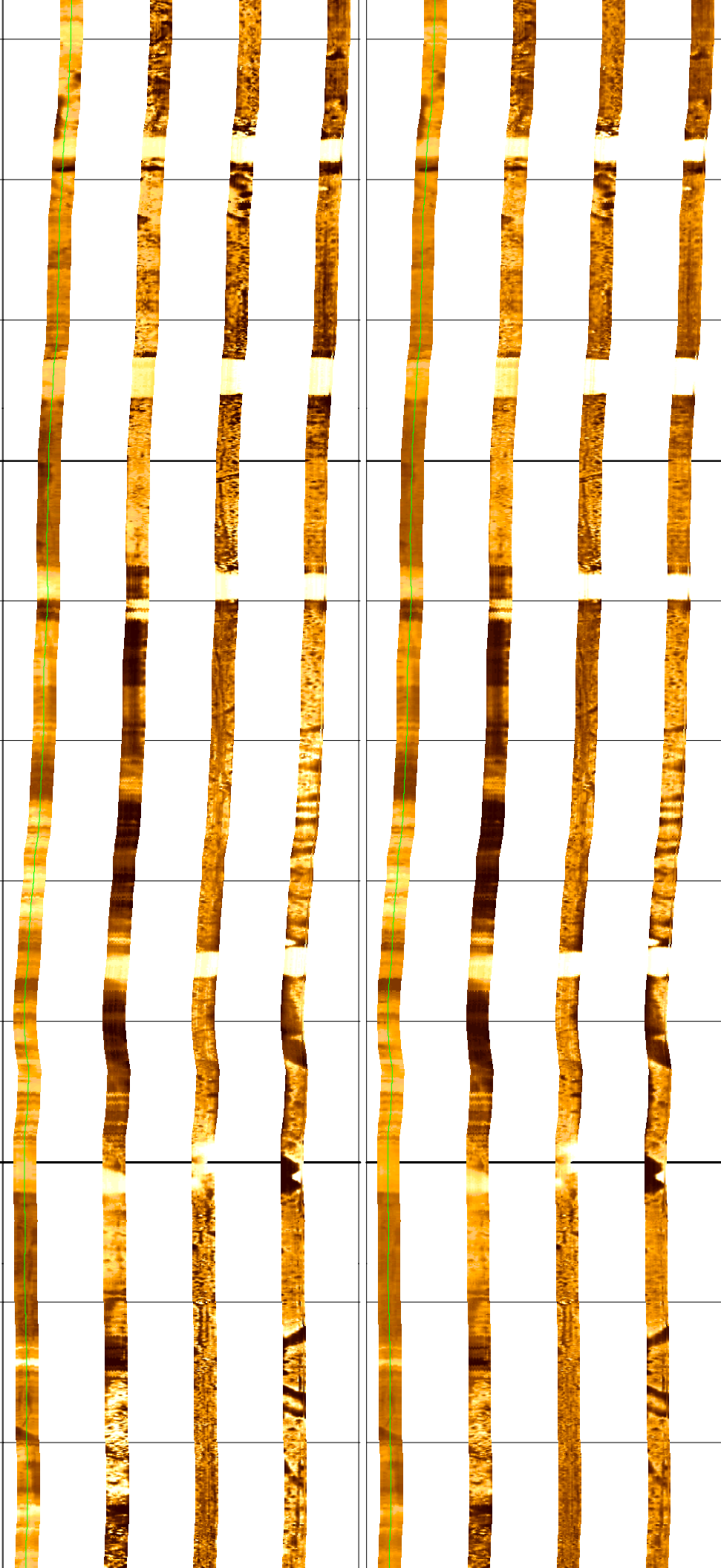
194

196

198

200

202



204

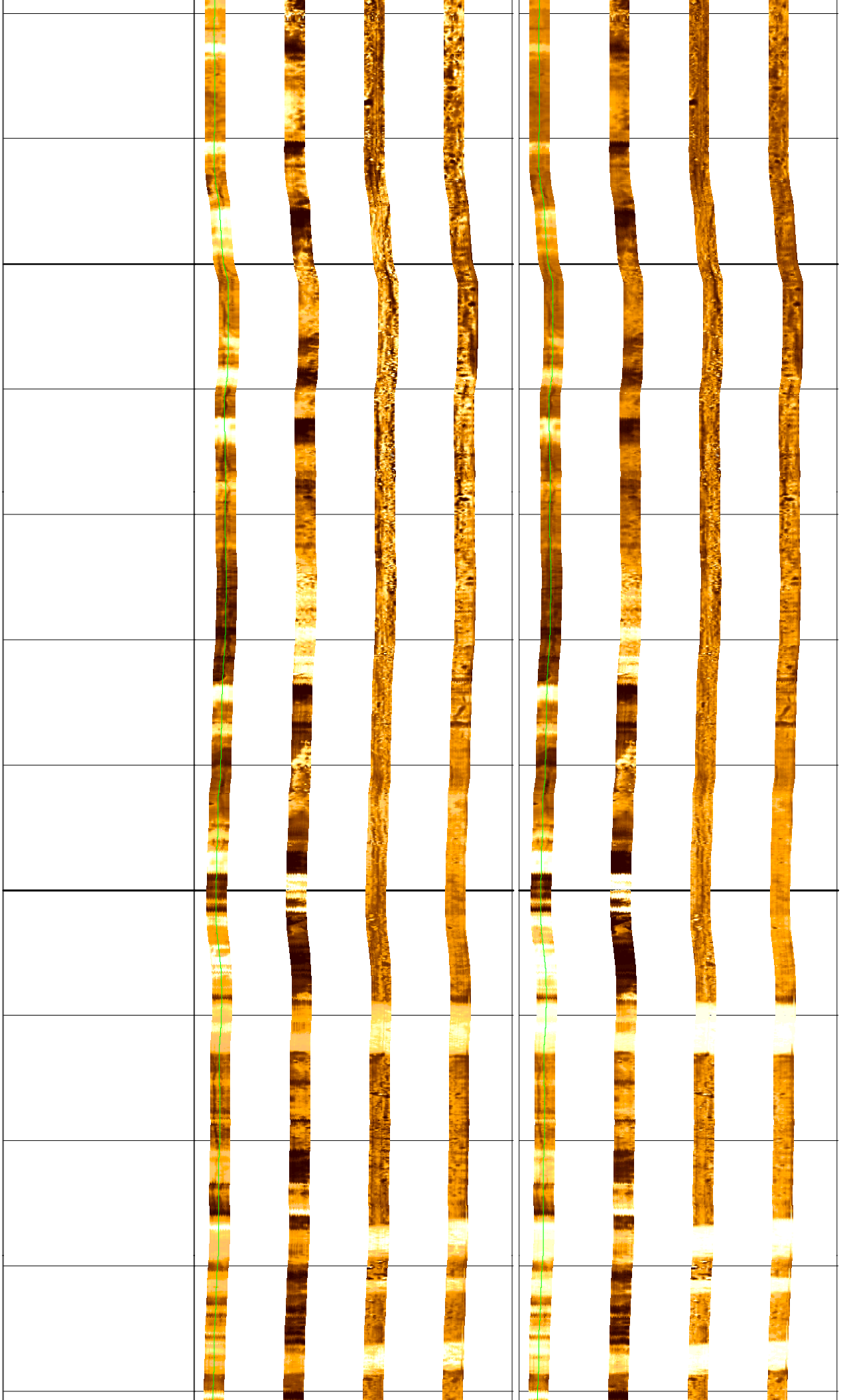
206

208

210

212

214



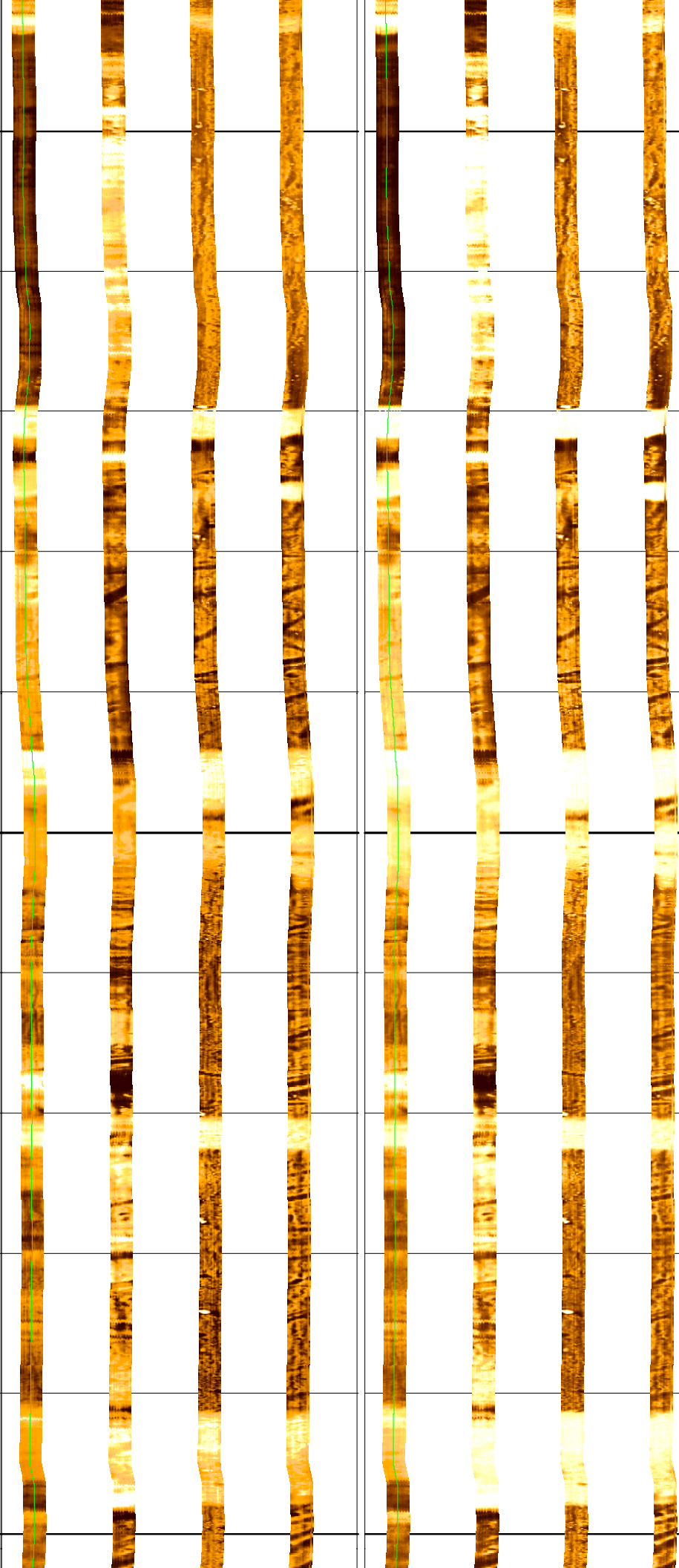
216

218

220

222

224



226

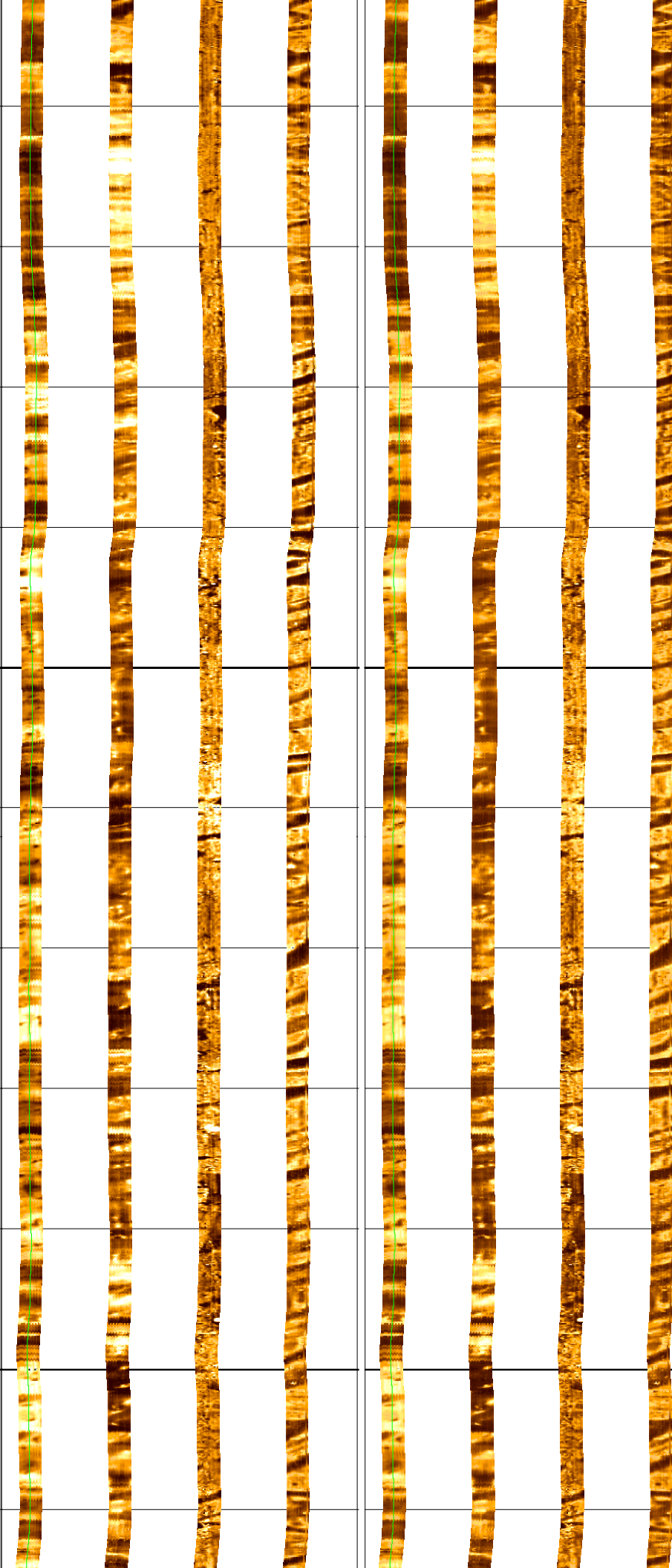
228

230

232

234

236



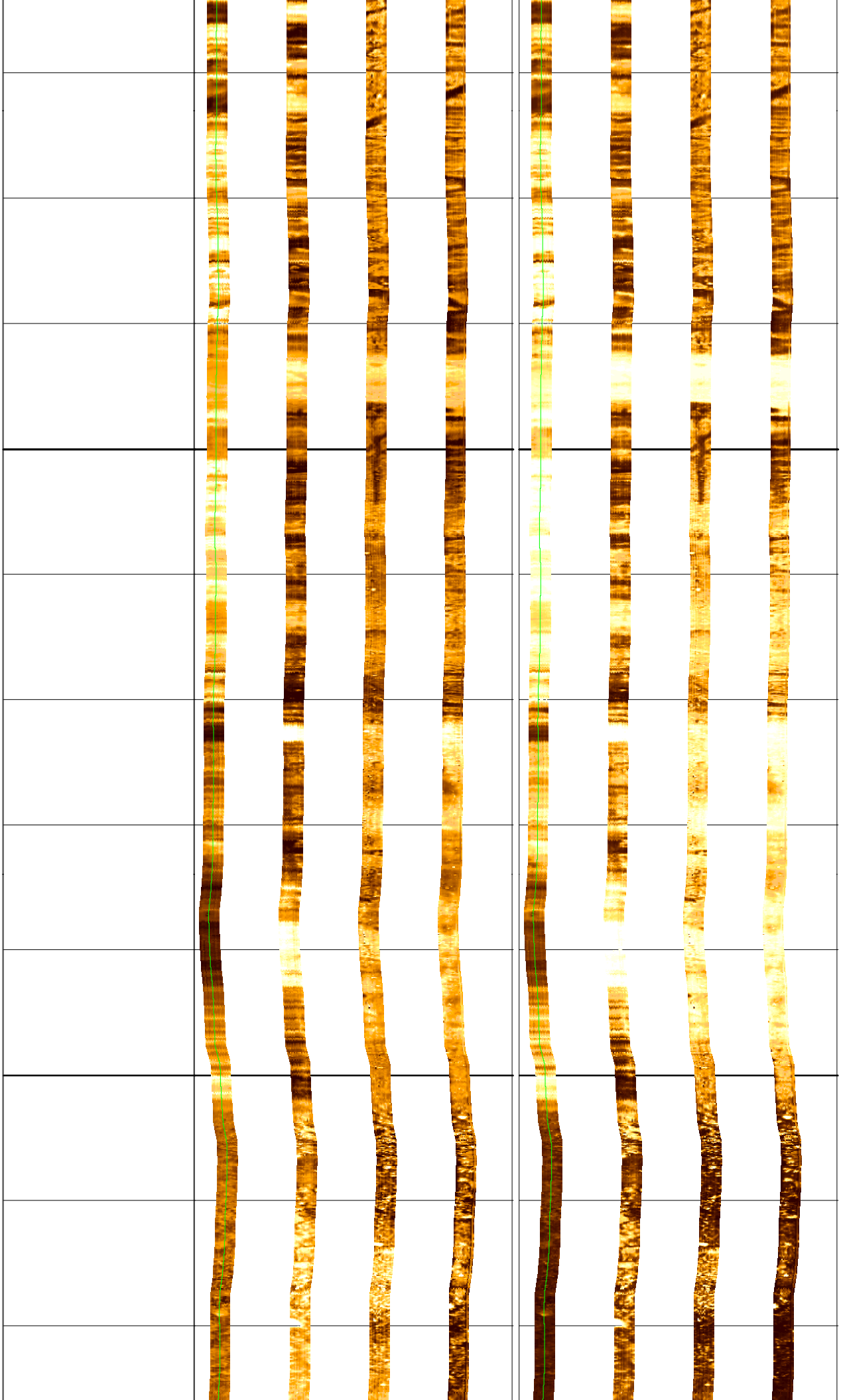
238

240

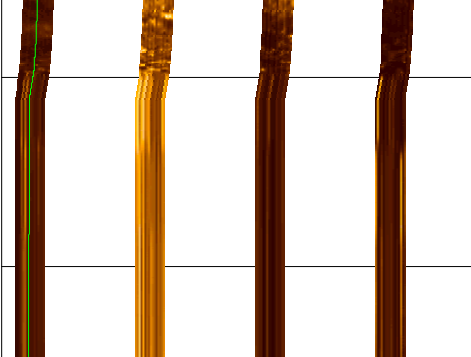
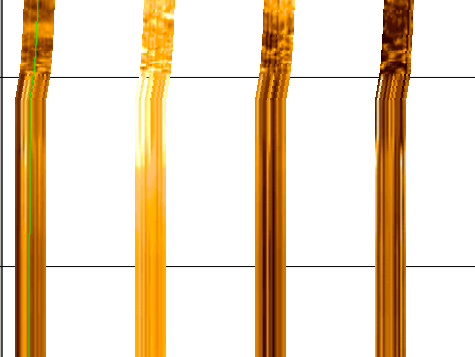
242

244

246



248



FMS_DSI_008LUP FMS4 .DYN
Horizontal Scale: 1 : 12.409
Orientation North

0 120 240 360

Resistive FMS4 Image Conductive



FMS_DSI_008LUP FMS4 .STA
Horizontal Scale: 1 : 12.409
Orientation North

0 120 240 360

Resistive FMS4 Image Conductive



250
MD
1 : 40
m

Schlumberger

CALIBRATIONS

MAXIS Field Log

Calibration and Check Summary

Measurement	Nominal	Master	Before	After	Change	Limit	Units
-------------	---------	--------	--------	-------	--------	-------	-------

Micro Electrical Scanner - B (Slim) Wellsite Calibration - Caliper Calibration

Before: 28-Apr-2005 15:20

Caliper 1 Zero Measurement	8.000	N/A	8.072	N/A	N/A	N/A	IN
Caliper 2 Zero Measurement	8.000	N/A	7.553	N/A	N/A	N/A	IN
Caliper 1 Plus Measurement	12.00	N/A	12.28	N/A	N/A	N/A	IN
Caliper 2 Plus Measurement	12.00	N/A	11.76	N/A	N/A	N/A	IN

Micro Electrical Scanner - B (Slim) Wellsite Calibration - CROUZET ACCELEROMETER PROM HAS BEEN READ CORRECTLY

Before: 8-May-2005 8:54

TEMPERATURE REFERENCE :	N/A	N/A	20	N/A	N/A	N/A	DEGC
YEAR OF CALIBRATION :	N/A	N/A	99	N/A	N/A	N/A	
MONTH OF CALIBRATION :	N/A	N/A	3	N/A	N/A	N/A	
SERIAL NUMBER :	N/A	N/A	743	N/A	N/A	N/A	

Micro Electrical Scanner - B (Slim) Wellsite Calibration - CROUZET MAGNETOMETER PROM HAS BEEN READ CORRECTLY

Before: 8-May-2005 8:54

TEMPERATURE REFERENCE :	N/A	N/A	25	N/A	N/A	N/A	DEGC
YEAR OF CALIBRATION :	N/A	N/A	91	N/A	N/A	N/A	
MONTH OF CALIBRATION :	N/A	N/A	5	N/A	N/A	N/A	
SERIAL NUMBER :	N/A	N/A	98	N/A	N/A	N/A	

Scintillation Gamma-Ray - N Wellsite Calibration - Detector Calibration

Before: 6-May-2005 21:58

Gamma Ray (Jig - Bkg)	166.0	N/A	166.0	N/A	N/A	15.09	GAPI
Gamma Ray (Calibrated)	165.0	N/A	165.0	N/A	N/A	15.00	GAPI

Micro Electrical Scanner - B (Slim) / Equipment Identification

Primary Equipment:

MEST Sonde - B
 MEST Preamplifier Cartridge - AB
 GPIT Cartridge - A
 MEST Acquisition Cartridge - A

MEDS - B
 MEPC - AB
 GPIC - A
 MEAC - A

Auxiliary Equipment:

MEST-B Preamplifier Cartridge Housing
 MEST Acquisition Cartridge Housing (Slim)

MEPH - A
 MEAH - B

Scintillation Gamma-Ray - N / Equipment Identification

Primary Equipment:

Scintillation Gamma Cartridge
 Scintillation Gamma Detector

SGC - TB
 SGD - TAA

Auxiliary Equipment:

Scintillation Gamma Housing
 Gamma Source Radioactive

SGH - K
 GSR - U/Y

Scintillation Gamma-Ray - N Wellsite Calibration

Detector Calibration

Phase	Gamma Ray Background	GAPI	Value	Phase	Gamma Ray (Jig - Bkg)	GAPI	Value	Phase	Gamma Ray (Calibrated)	GAPI	Value
Before			1.507	Before			166.0	Before			165.0
	0 (Minimum)	30.00 (Nominal)	120.0 (Maximum)		150.9 (Minimum)	166.0 (Nominal)	181.1 (Maximum)		150.0 (Minimum)	165.0 (Nominal)	180.0 (Maximum)

Before: 6-May-2005 21:58

Company: Lamont Doherty

Schlumberger

Well: Expedition 307 Site U1317D

Field: Porcupine Basin Carbonate Mounds

Rig: Joides Resolution

Country: Ireland

Formation Micro Scanner

Gamma Ray