

Company: Integrated Ocean Drilling Program

Well: IODP Exp 308 Hole U1321A
Field: East Breaks Block 691
Rig: Joides Resolution State: Texas

VISION Density Neutron - Image 1 : 200 Measured Depth Recorded Mode Log

Location		K.B. Top Drive	
Total depth:	1602 m	G.L.	-1451.5 m
Spud date:	13-Jun-2005	D.F.	10.5 m
Runs:	1 To 1		
Permanent datum:	Mean Sea Level	Elev.:	0 m
Log measured from:	Drill Floor	10.5 m above Perm. datum	
Depth reference:	Driller's Depth		
Service Order no.	NAD 27	Longitude	Latitude
40012055	UTM Zone 15N	W94.39892	N27.27568

Depth logged: 1462 m To 1600 m **Mag decl:** 3.52 deg. **Other services:**
Date logged: 13-Jun-05 To 13-Jun-05 **Mag dip:** 56.98 deg.

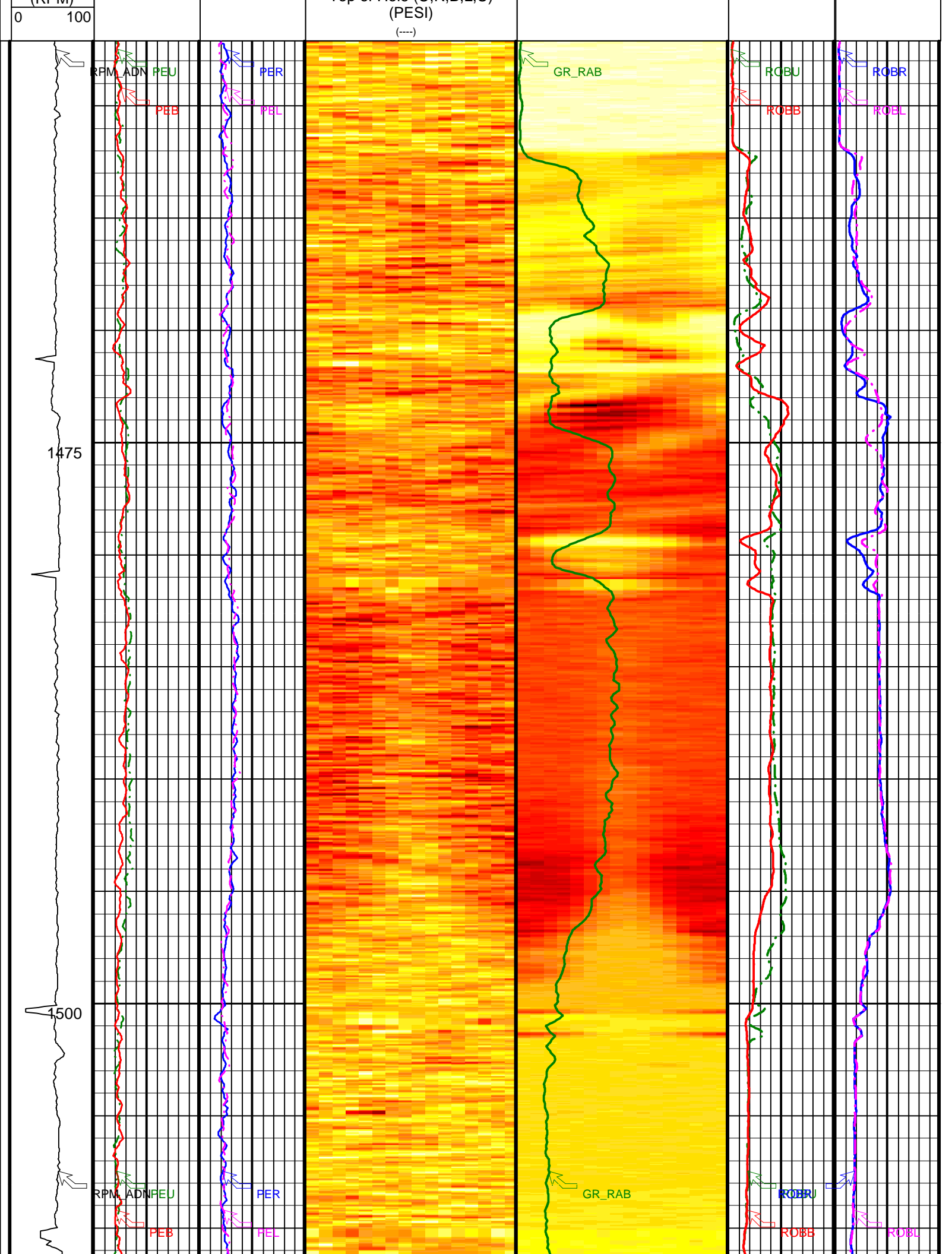
Bore hole record		Casing record				
Hole size	from	to	Size	Density	from	to
9.875 in.	1462 m	1602 m				

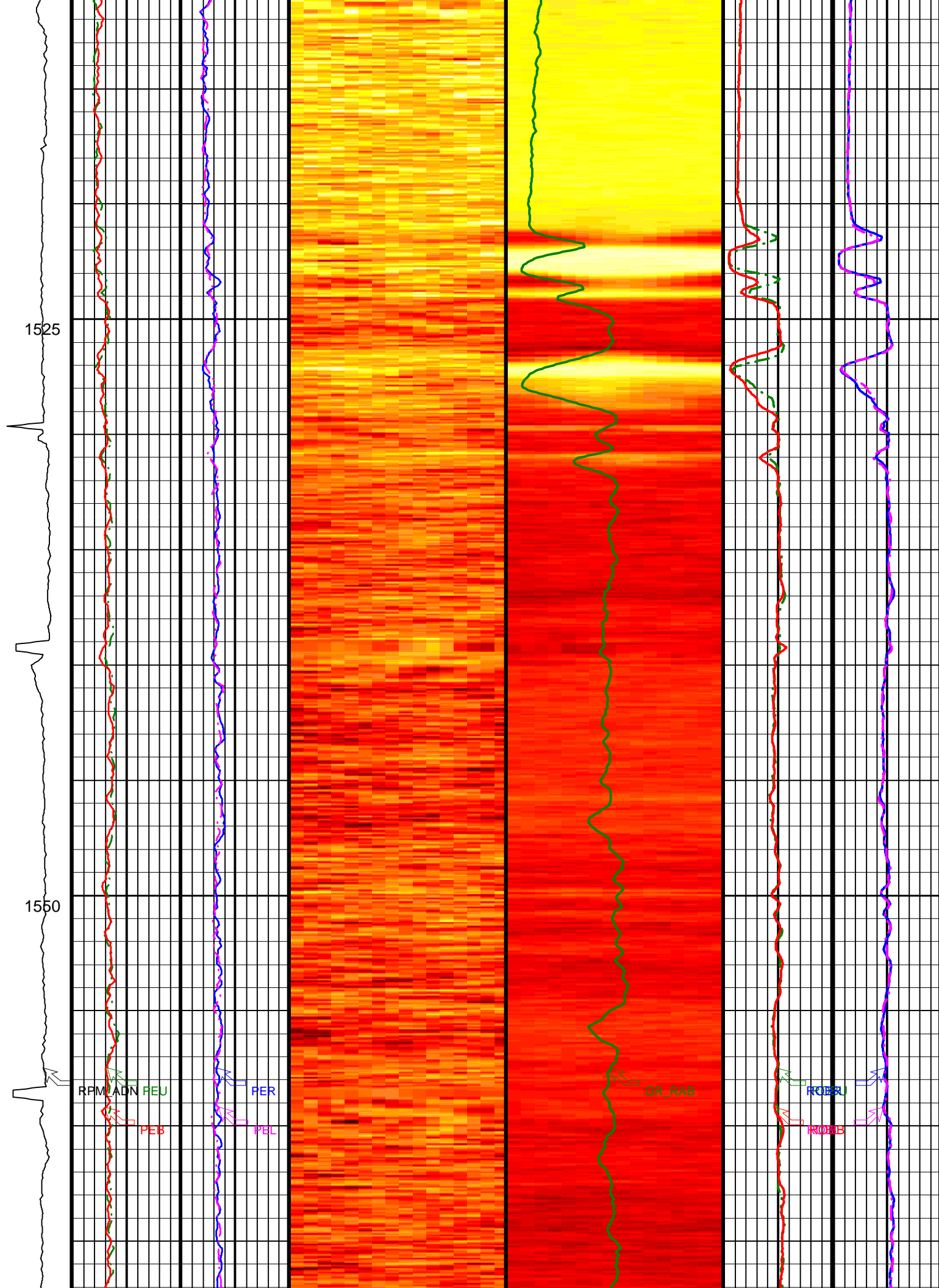
Surface equipment		Software record	
Unit	TWIS	IDEAL Wis	10_OC_04.1
Depth system	Geolograph	SPM	10_1C_05
		LWD	See Remarks
		MWD	8.0c00

PEF / Density Static Image

IDEAL Version: ID10_OC_04
IDF

Format: V_DEN_NEU_IMAGE		Vertical Scale: 1:200		Graphics File Created: 01-Jul-2005 00:22		
	Photoelectric Factor, Bottom (PEB) 	Photoelectric Factor, Left (PEL) 	Run 1 Start Depth: 1462 m Mud Type: Seawater GVR s/n 6163 ARC s/n 6201 ADN s/n 6306		Bulk Density, Bottom (ROBB) 	Pink Density, Left (ROBL) (G/C3)
	ADN Rotational Speed (RPM_ADN) 	Photoelectric Factor, Up (PEU) 	Photoelectric Factor, Right (PER) 		Bulk Density, Up (ROBU) (G/C3) 	Bulk Density, Right (ROBR) (G/C3)
			ADN Photoelectric Factor (16-Sector) Image Oriented Top of Hole (U.R.B.L.U) 	RAB Gamma Ray (GR_RAB) (GAPI) 		





1575

1600

Total Depth 1602 m

<p>ADN Rotational Speed (RPM_ ADN) (RPM)</p> <p>0 100</p>	<p>Photoelectric Factor, Up (PEU)</p> <p>0 (----) 10</p>	<p>Photoelectric Factor, Right (PER)</p> <p>0 (----) 10</p>	<p>Absent 1.293 1.683 2.073 2.463 2.854 3.244 3.634 4.024 4.415 4.805</p> <p>ADN Photoelectric Factor (16-Sector) Image Oriented Top of Hole (U,R,B,L,U) (PESI) (----)</p>	<p>RAB Gamma Ray (GR_RAB) (GAPI)</p> <p>0 150</p>	<p>Bulk Density, Up (ROBU) (G/C3)</p> <p>1 2.65</p>	<p>Bulk Density, Right (ROBR) (G/C3)</p> <p>1 2.65</p>
	<p>Photoelectric Factor, Bottom (PEB)</p> <p>0 (----) 10</p>	<p>Photoelectric Factor, Left (PEL)</p> <p>0 (----) 10</p>	<p>Absent 1.088 1.205 1.322 1.439 1.556 1.673 1.790 1.907 2.024 2.141</p> <p>ADN Bulk Density (16-Sector) Image Oriented Top of Hole (U,R,B,L,U) (ROSI) (G/C3)</p>		<p>Bulk Density, Bottom (ROBB) (G/C3)</p> <p>1 2.65</p>	<p>Bulk Density, Left (ROBL) (G/C3)</p> <p>1 2.65</p>

IDEAL Version: ID10_OC_04
IDF

Density Dynamic Image

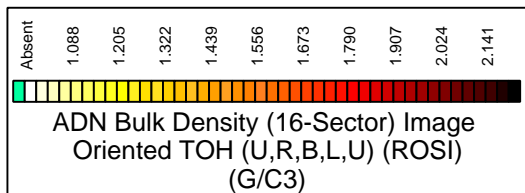
IDEAL Version: ID10_OC_04

IDF

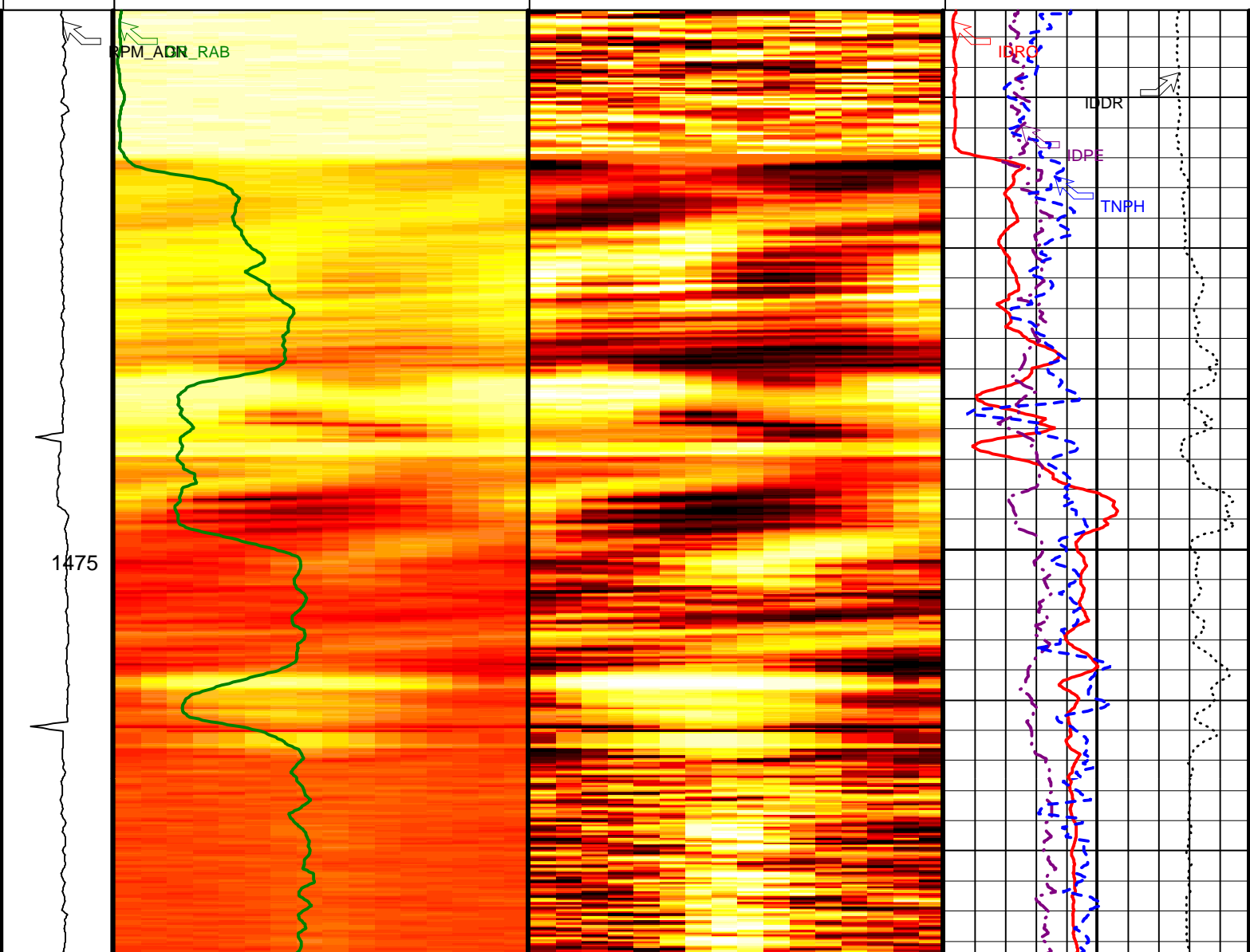
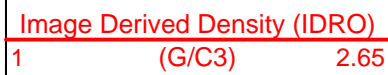
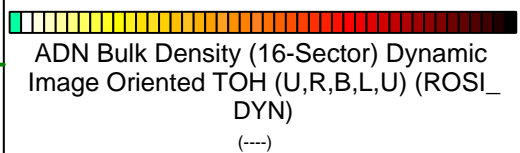
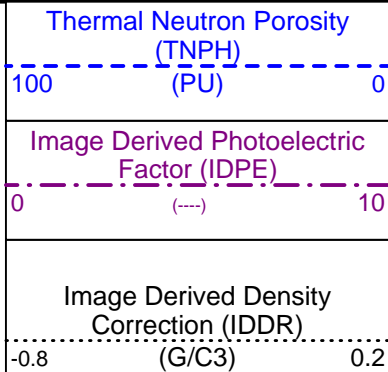
Format: V_DEN_NEU_DYN_IMAGE

Vertical Scale: 1:200

Graphics File Created: 01-Jul-2005 00:22



Run 1
 Start Depth: 1462 m
 Mud Type: Seawater
 GVR s/n 6163
 ARC s/n 6201
 ADN s/n 6306



1500

RPM_ADN

GR_RAB

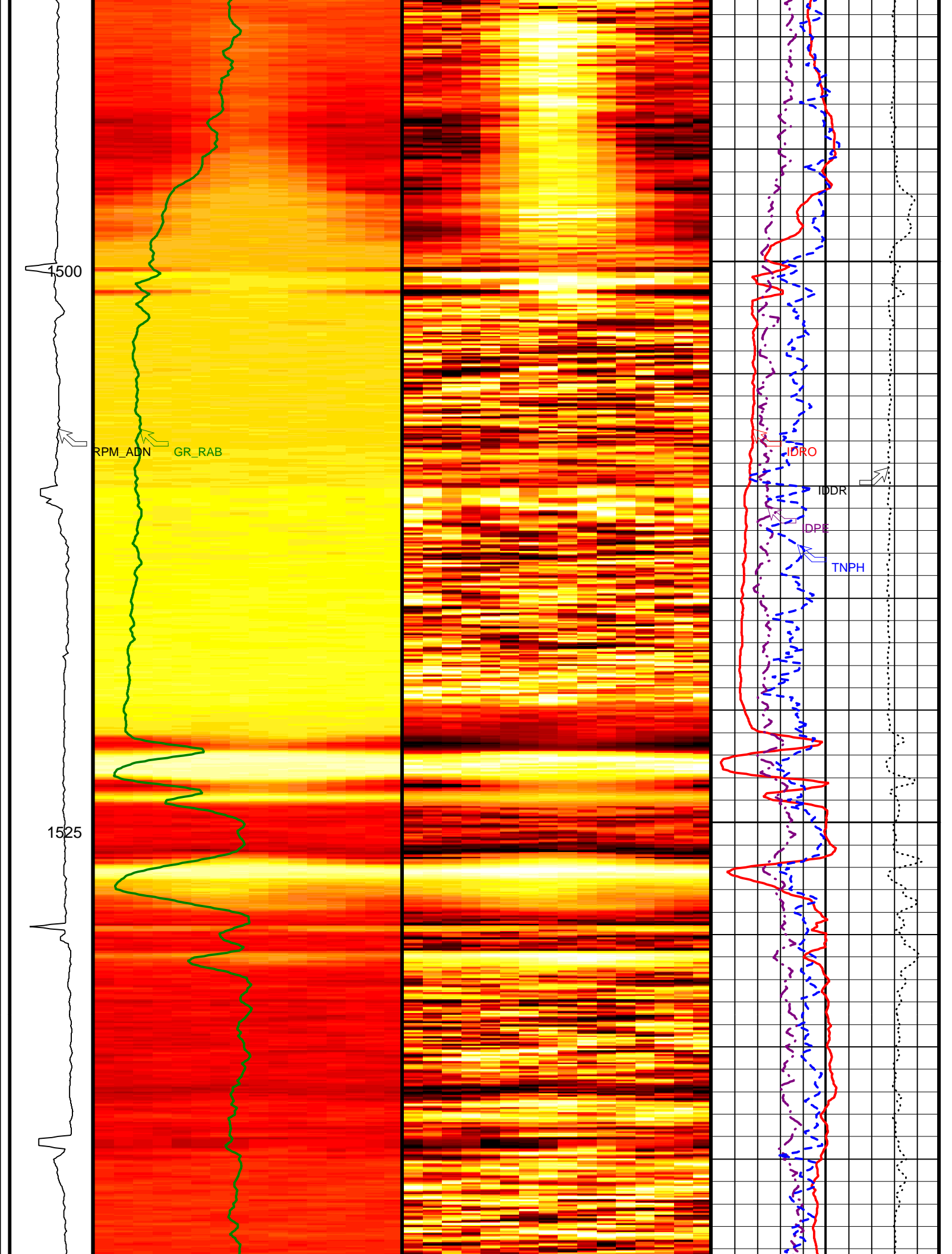
1525

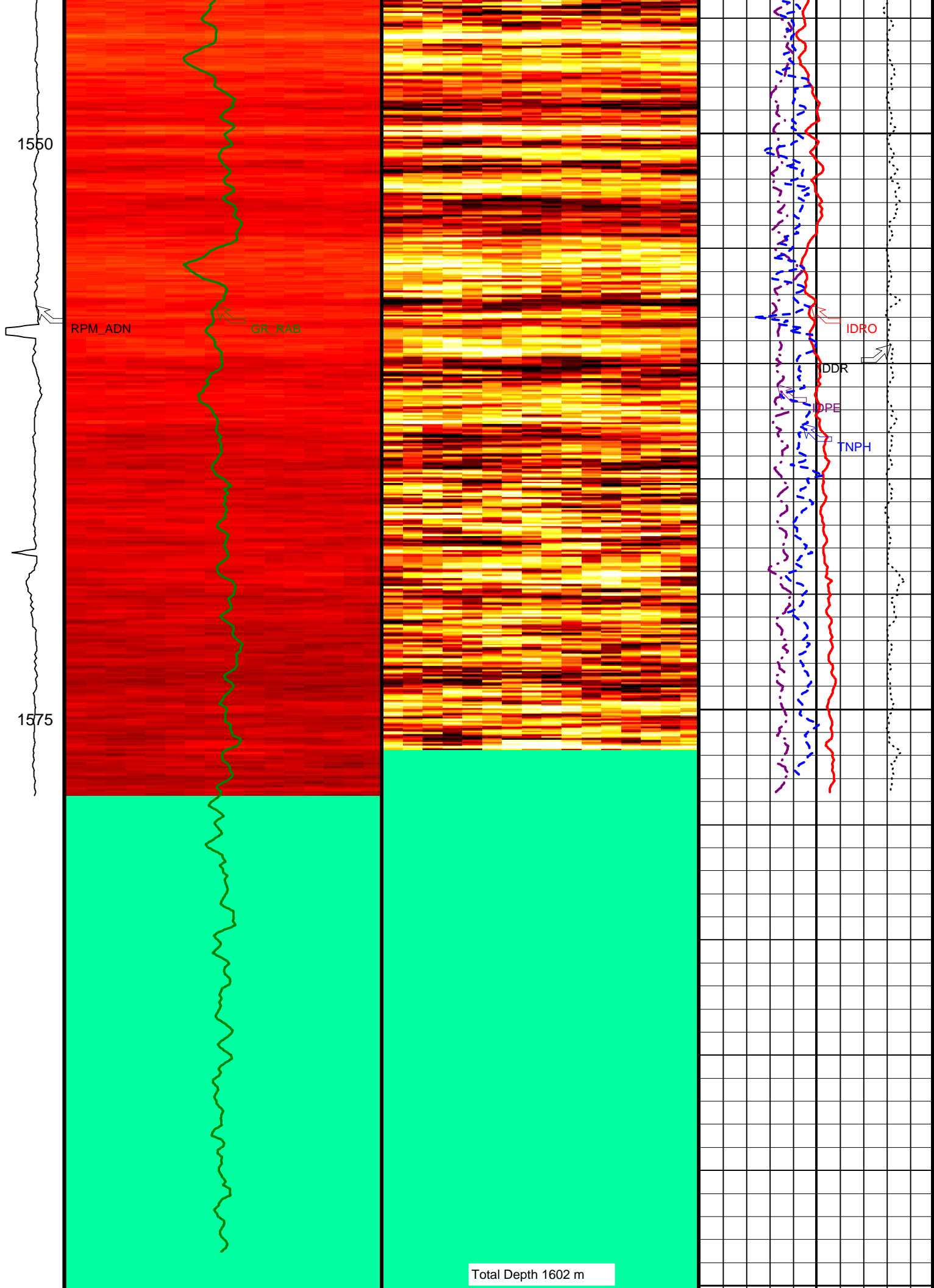
IDRO

IDDR

IDPE

TNPH





1600			
ADN Rotational Speed (RPM_ ADN) (RPM)	0 100		
	<p>RAB Gamma Ray (GR_RAB) (GAPI) 150</p>	<p>ADN Bulk Density (16-Sector) Dynamic Image Oriented TOH (U,R,B,L,U) (ROSI_DYN) (----)</p>	<p>Image Derived Density (IDRO) (G/C3) 2.65</p>
	<p>Absent 1.088 1.205 1.322 1.439 1.556 1.673 1.790 1.907 2.024 2.141</p> <p>ADN Bulk Density (16-Sector) Image Oriented TOH (U,R,B,L,U) (ROSI) (G/C3)</p>		<p>Image Derived Density Correction (IDDR) (G/C3) -0.8 0.2</p> <p>Image Derived Photoelectric Factor (IDPE) (----) 0 10</p> <p>Thermal Neutron Porosity (TNP) (PU) 100 0</p>

IDEAL Version: ID10_0C_04
IDF

Company: Integrated Ocean Drilling Program

Schlumberger

Well: IODP Exp 308 Hole U1321A

Field: East Breaks Block 691

Rig: Joides Resolution

State: Texas

VISION Density Neutron - Image

1 : 200 Measured Depth

Recorded Mode Log