

0.2	(OHMM)	20
Ring Resistivity (RES_RING)		
0.2	(OHMM)	20

PIP SUMMARY

- Ring Samples
- Gamma Ray Samples

IDEAL Version: ID10_0C_04
IDF

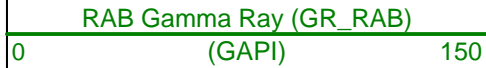
GVR Dynamic Image

IDEAL Version: ID10_0C_04
IDF

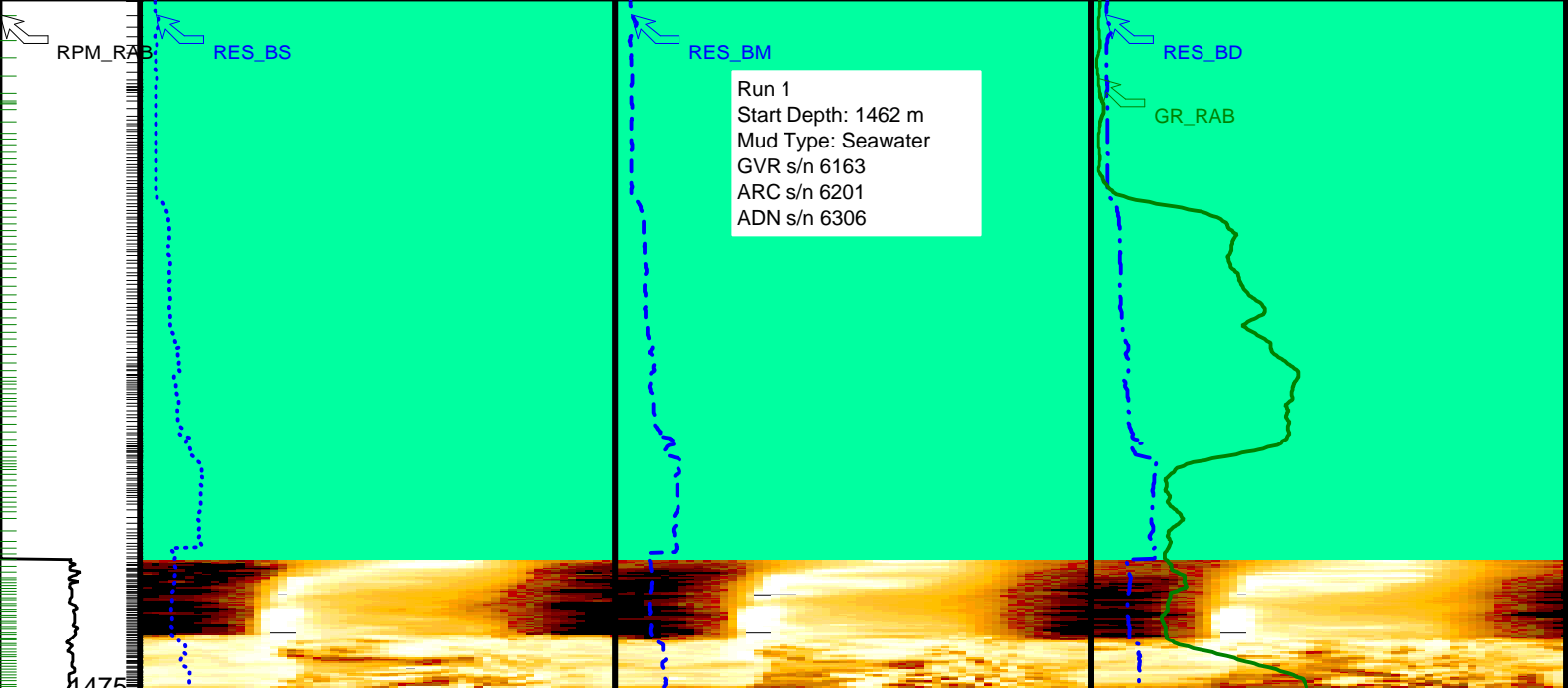
Format: GEOVIS_RES_DYN_IMAGE Vertical Scale: 1:200 Graphics File Created: 01-Jul-2005 00:22

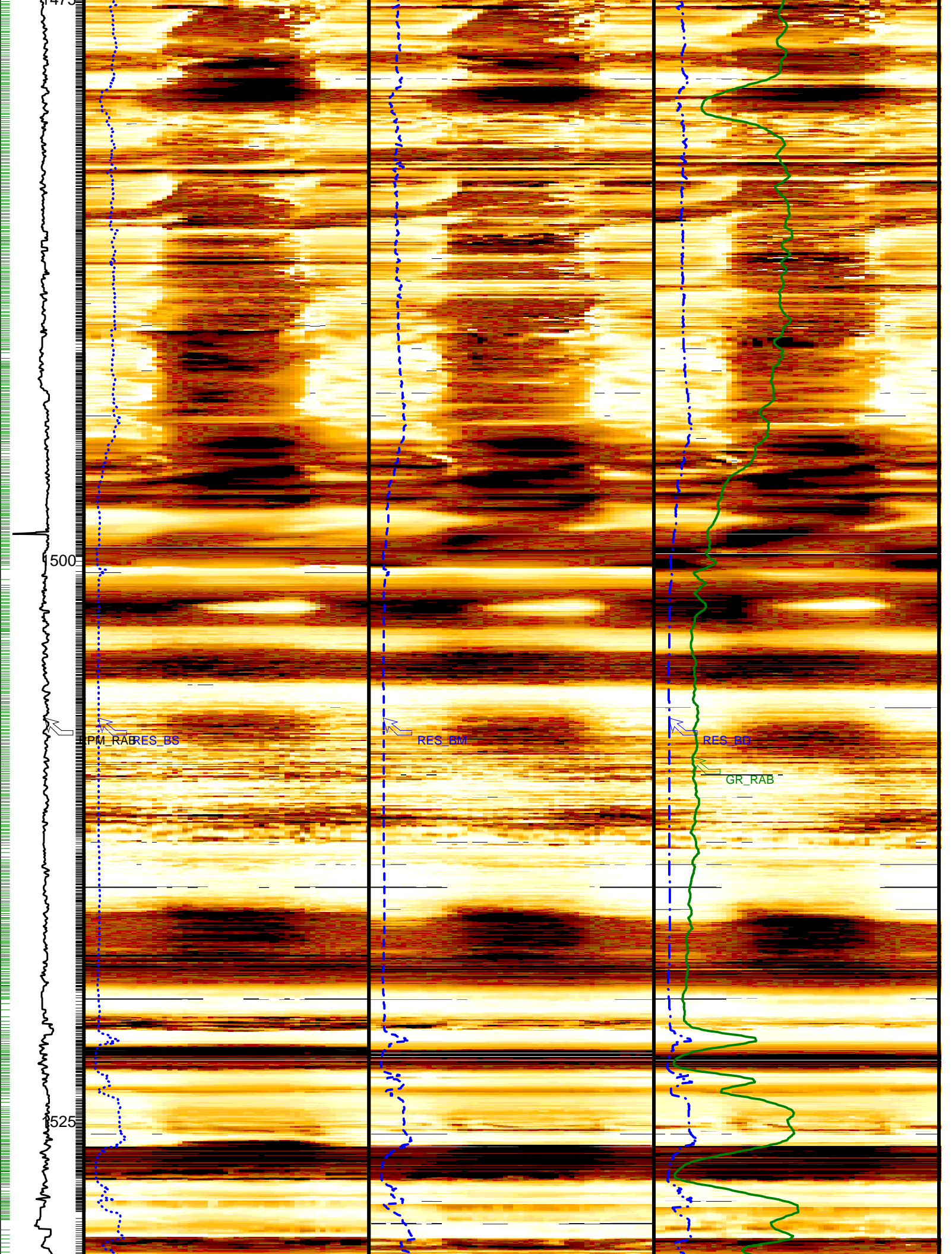
PIP SUMMARY

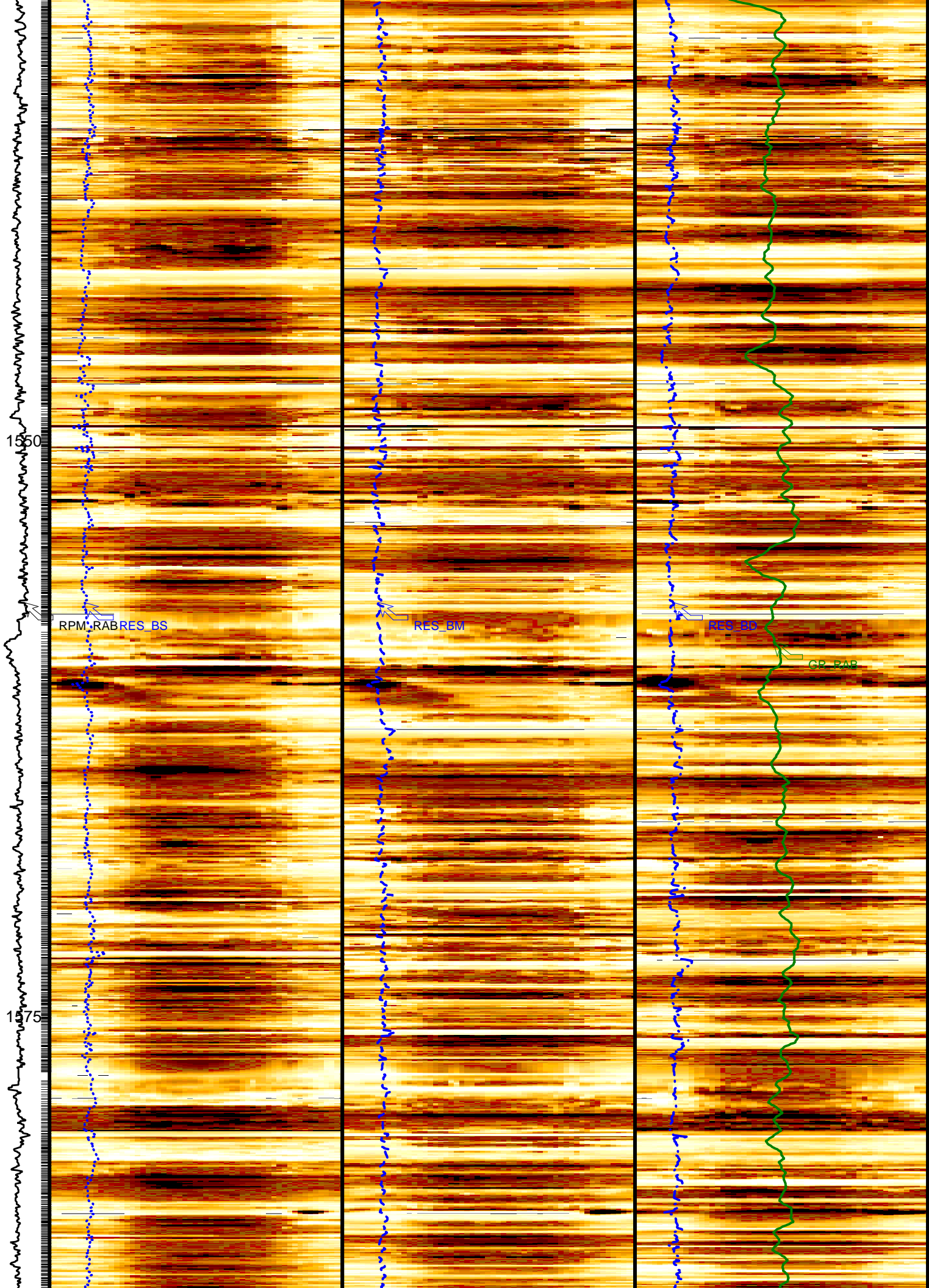
- Ring Samples
- Gamma Ray Samples

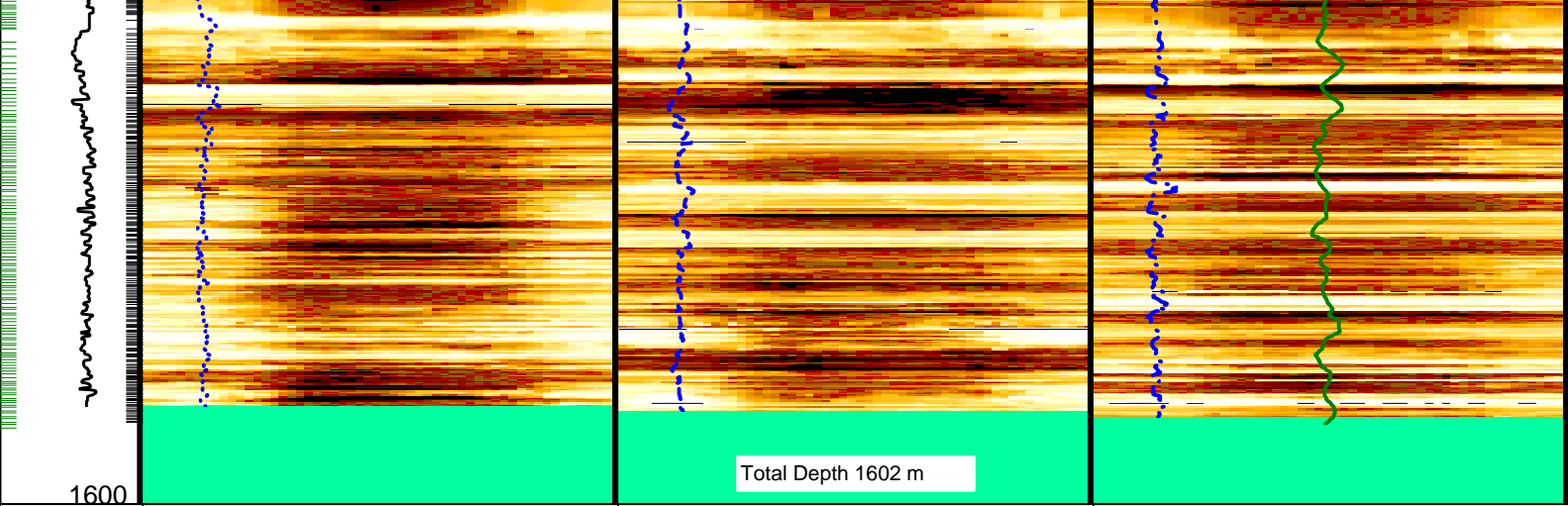


RAB Rotational Speed (RPM_RAB) (RPM)	Shallow Button Resistivity (RES_BS) (OHMM)	Medium Button Resistivity (RES_BM) (OHMM)	Deep Button Resistivity (RES_BD) (OHMM)
0 100	0 10	0 10	0 10









Total Depth 1602 m

RAB Rotational Speed (RPM_RAB) (RPM) 0 100	Shallow Button Resistivity (RES_BS) (OHMM) 0 100	Medium Button Resistivity (RES_BM) (OHMM) 0 100	Deep Button Resistivity (RES_BD) (OHMM) 0 100
	 Conductive Resistive (R1IM_DYN) (---)	 Conductive Resistive (R2IM_DYN) (---)	RAB Gamma Ray (GR_RAB) (GAPI) 0 150
			 Conductive Resistive (R3IM_DYN) (---)

PIP SUMMARY

— Ring Samples
— Gamma Ray Samples

IDEAL Version: ID10_OC_04
IDF

Company: Integrated Ocean Drilling Program
Well: IODP Exp 308 Hole U1321A
Field: East Breaks Block 691
Rig: Joides Resolution
State: Texas



GeoVISION Resistivity - Image
1 : 200 Measured Depth
Recorded Mode Log

