

1400

1425

RPM ADN PEU

PEB

FER

FEL

GR_RAB

ROBB

ROBL

ROBU

1450

1475

RPM

ADN

PEU

PEB

PER

PEL

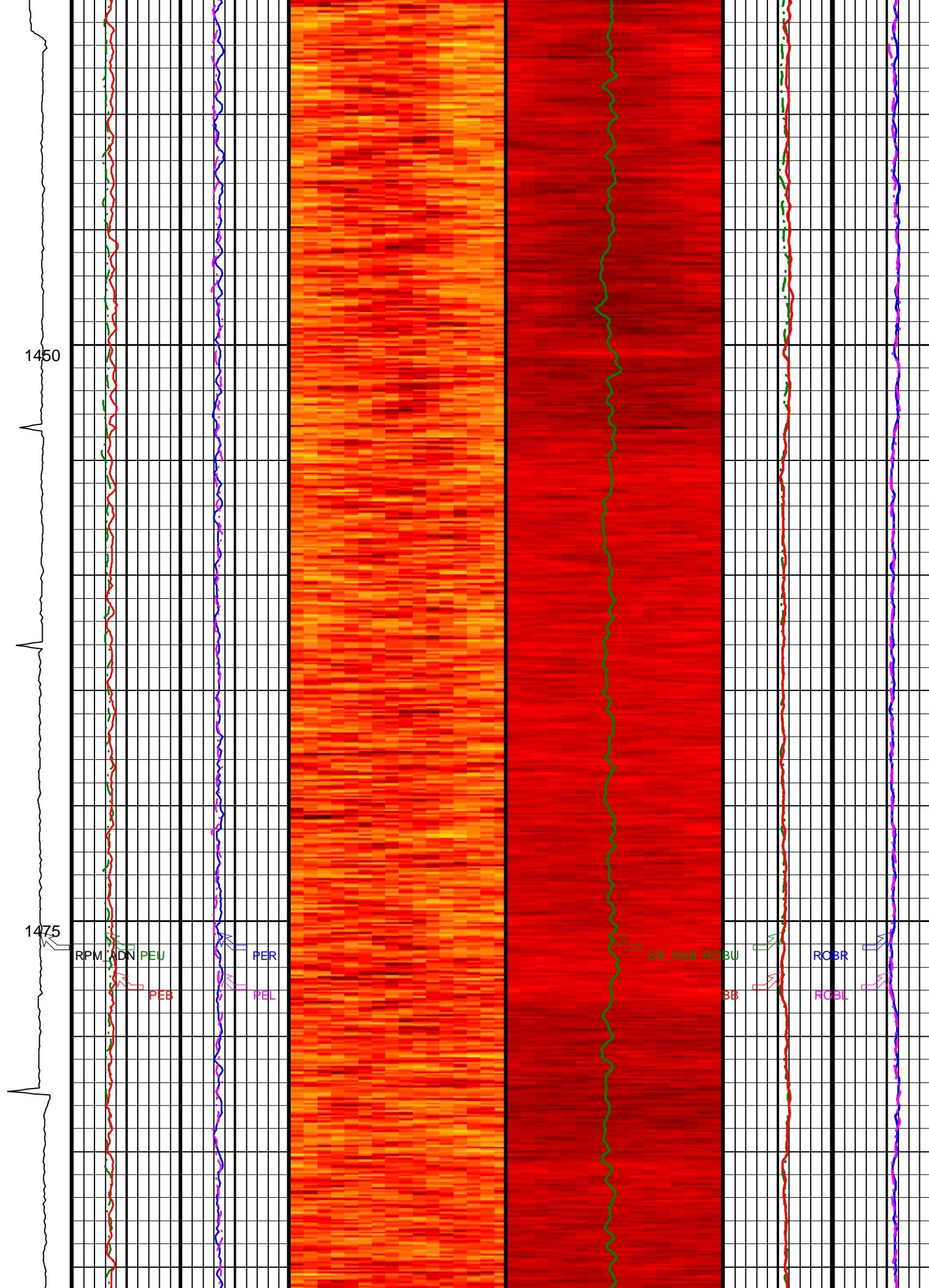
GR_RAB

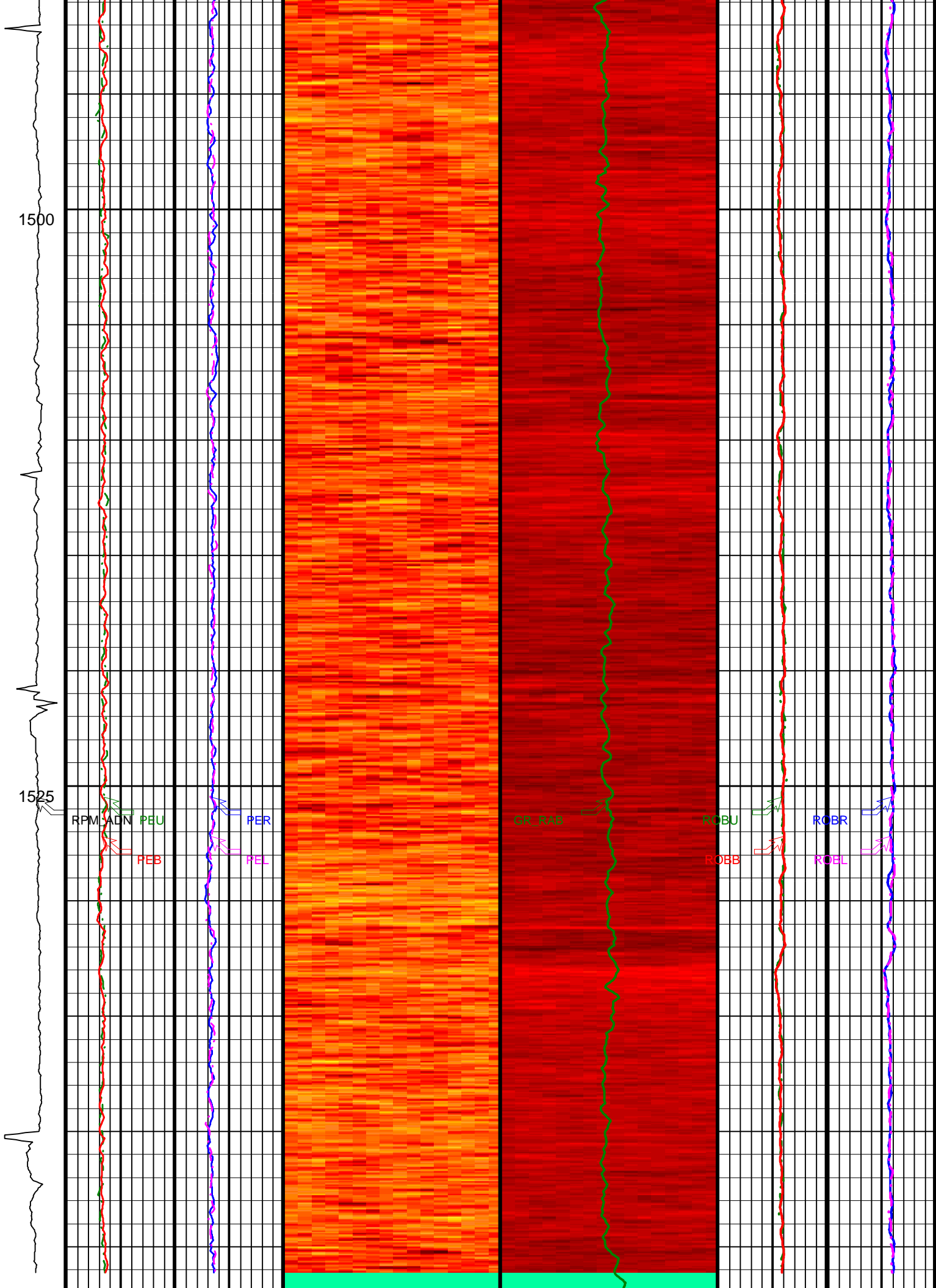
ROBU

BB

ROBR

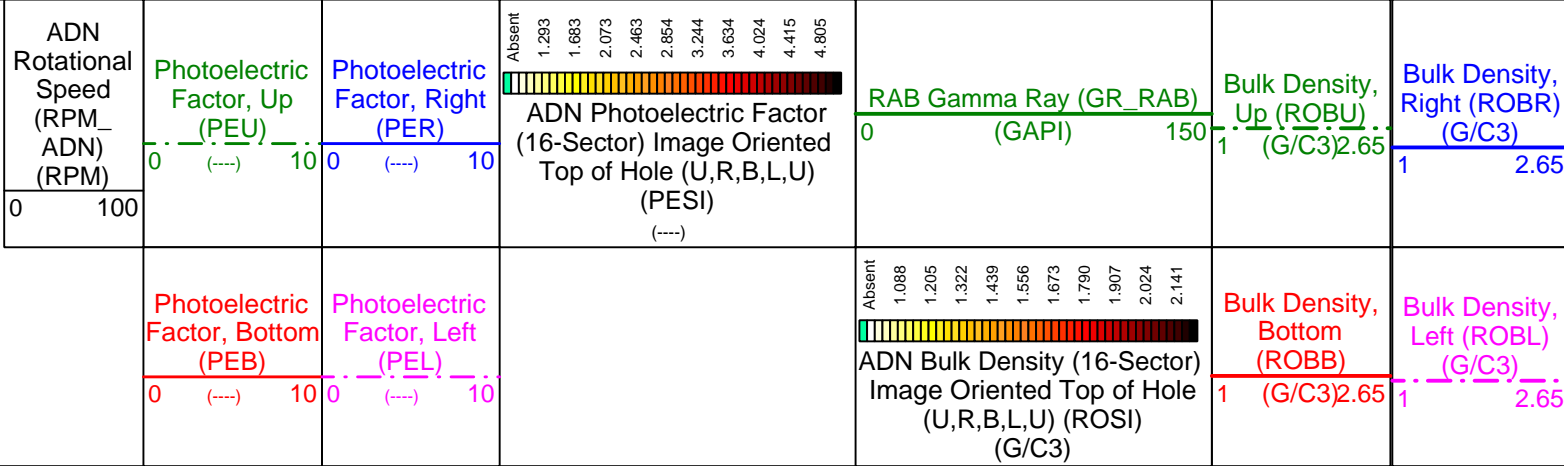
ROBL





1550

Total Depth 1568 m



IDEAL Version: ID10_0C_04
IDF

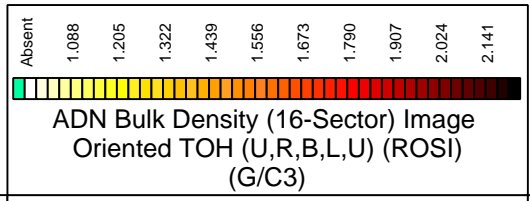
Density Dynamic Image

IDEAL Version: ID10_0C_04
IDF

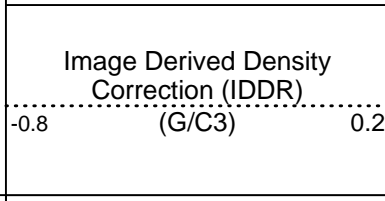
Format: V_DEN_NEU_DYN_IMAGE Vertical Scale: 1:200 Graphics File Created: 01-Jul-2005 00:49

Thermal Neutron Porosity
(TNPH)
100 (PU) 0

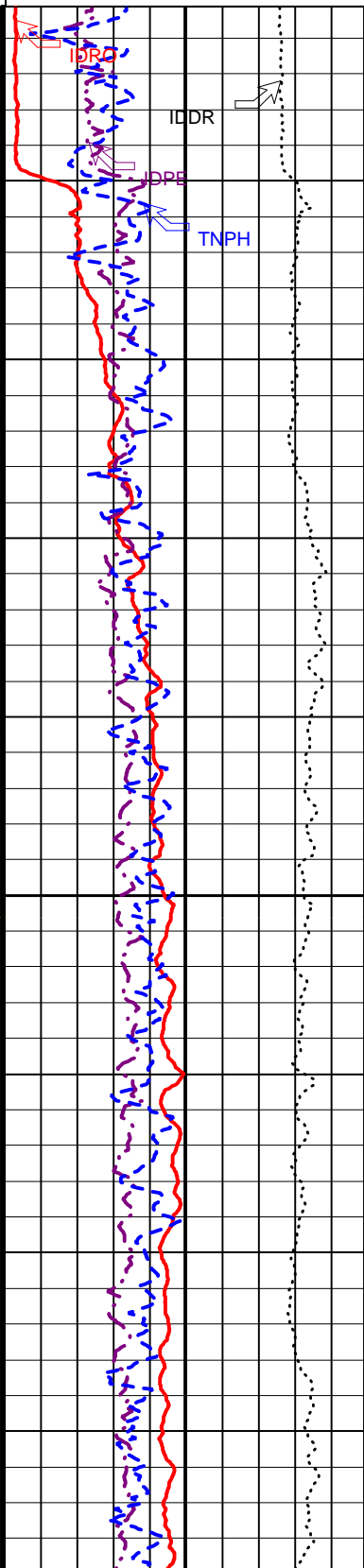
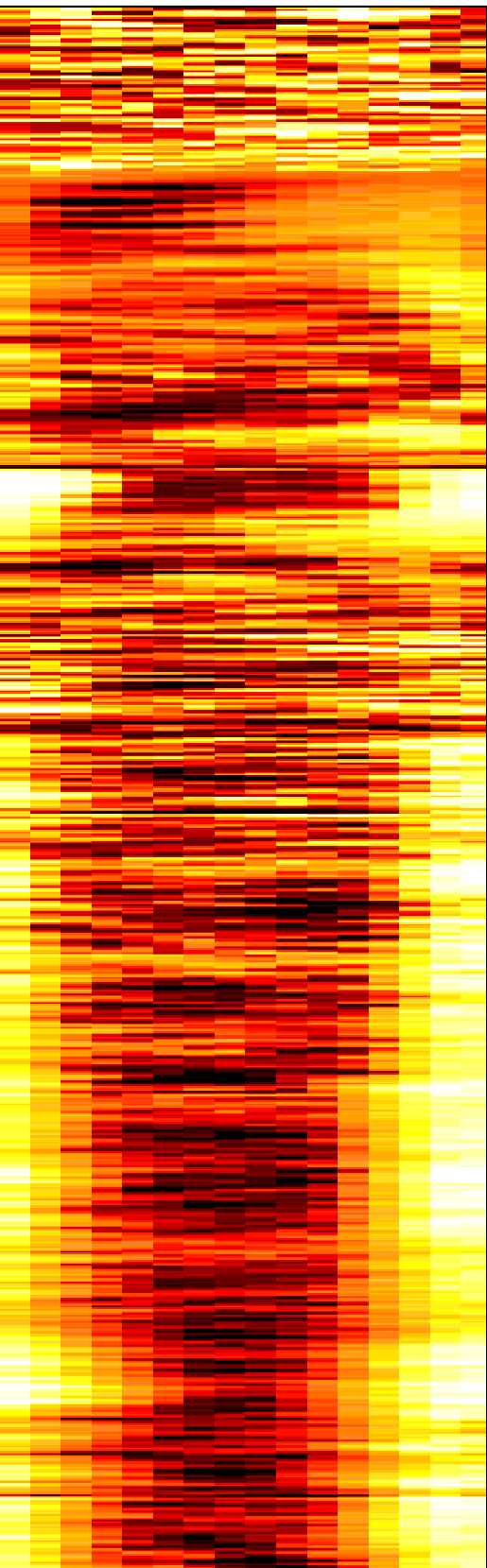
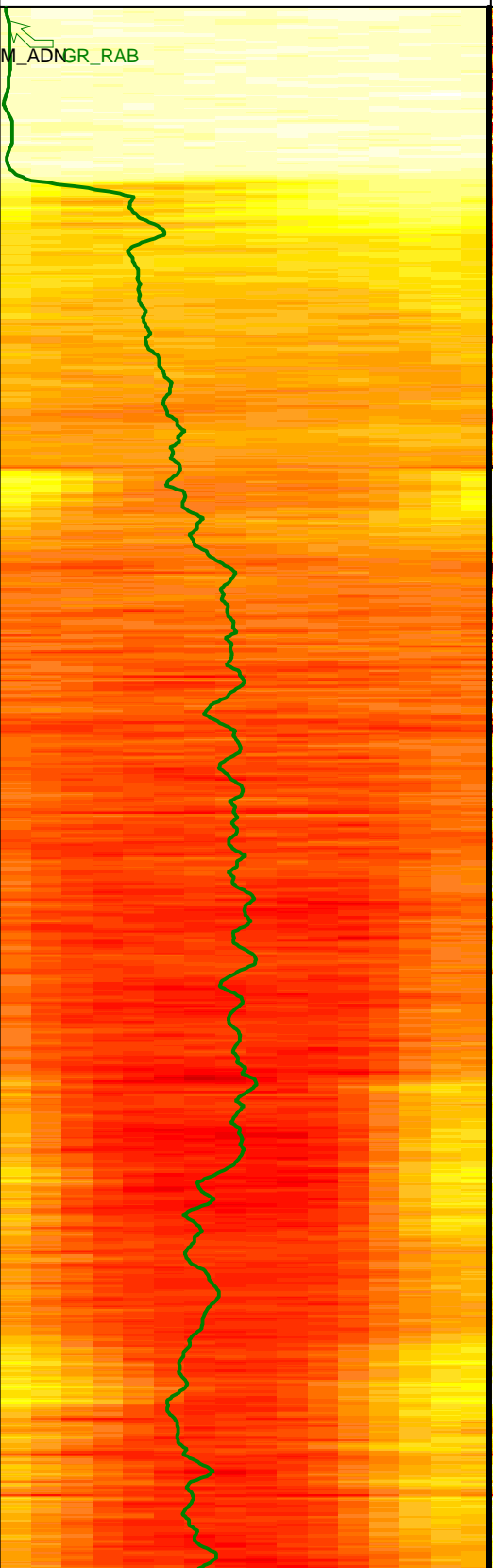
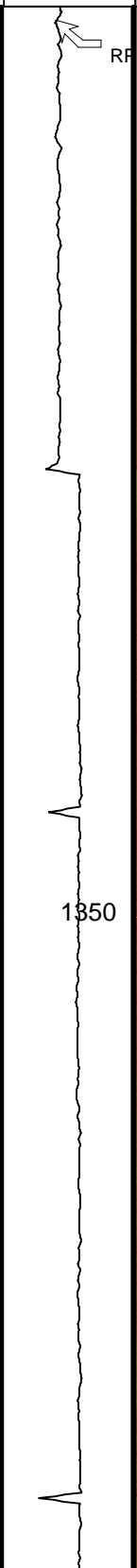
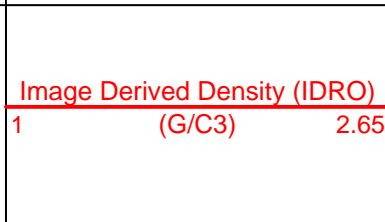
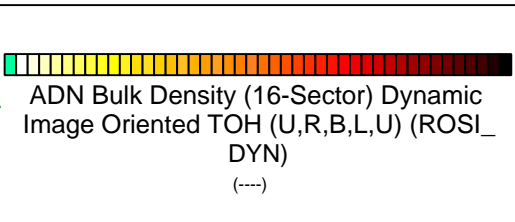
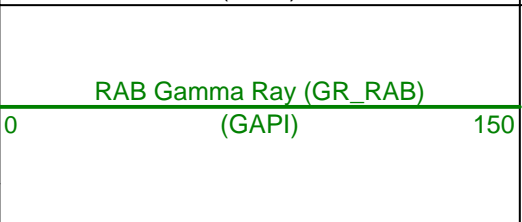
Image Derived Photoelectric
Factor (IDPE)



Run 2
 Start Depth: 1330 m
 Mud Type: Seawater
 GVR s/n 6163
 ARC s/n 6201
 ADN s/n 6306



ADN Rotational Speed (RPM_ADN) (RPM)



1375

RPM_ADN

GR_RAB

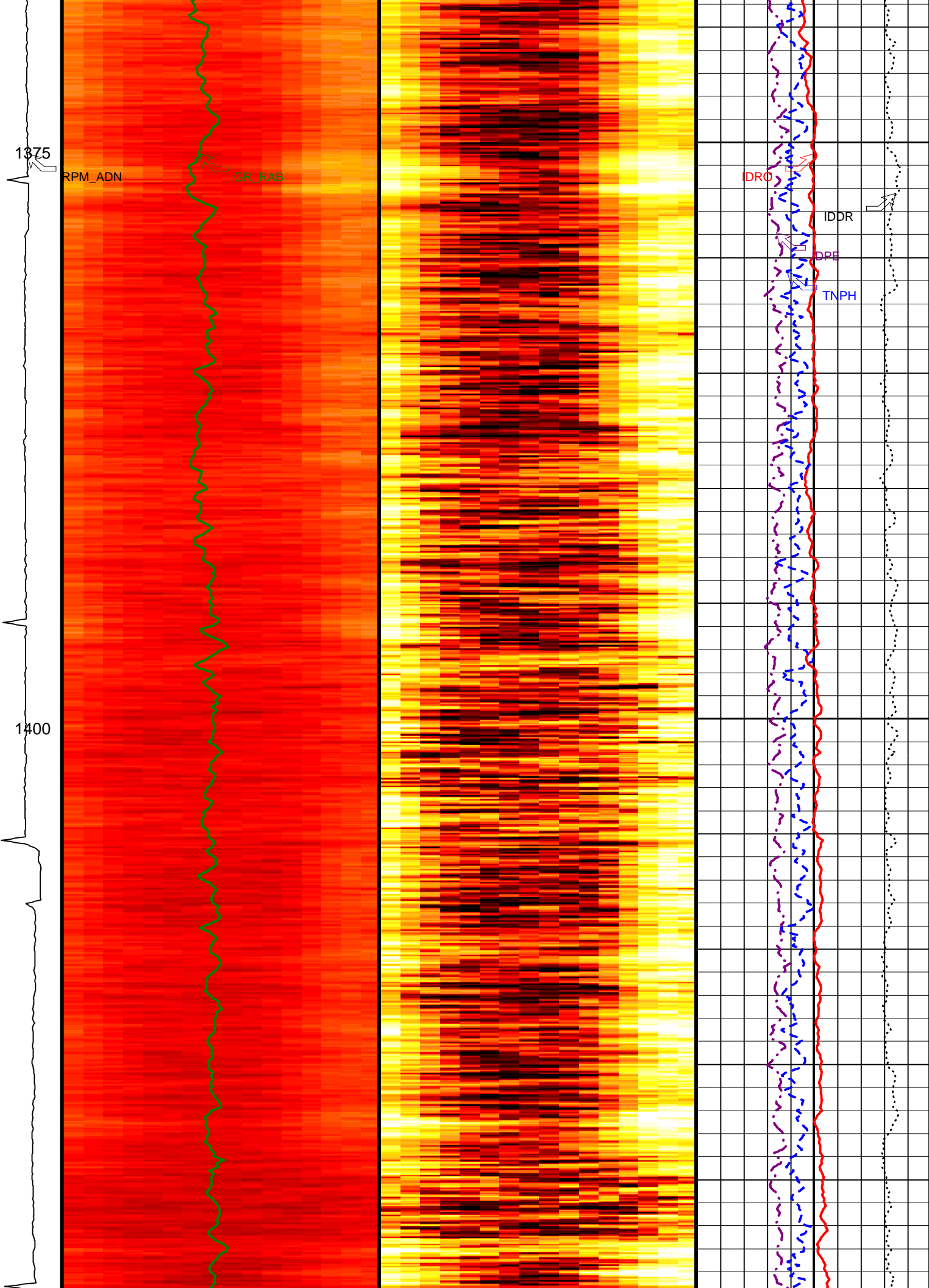
IDR0

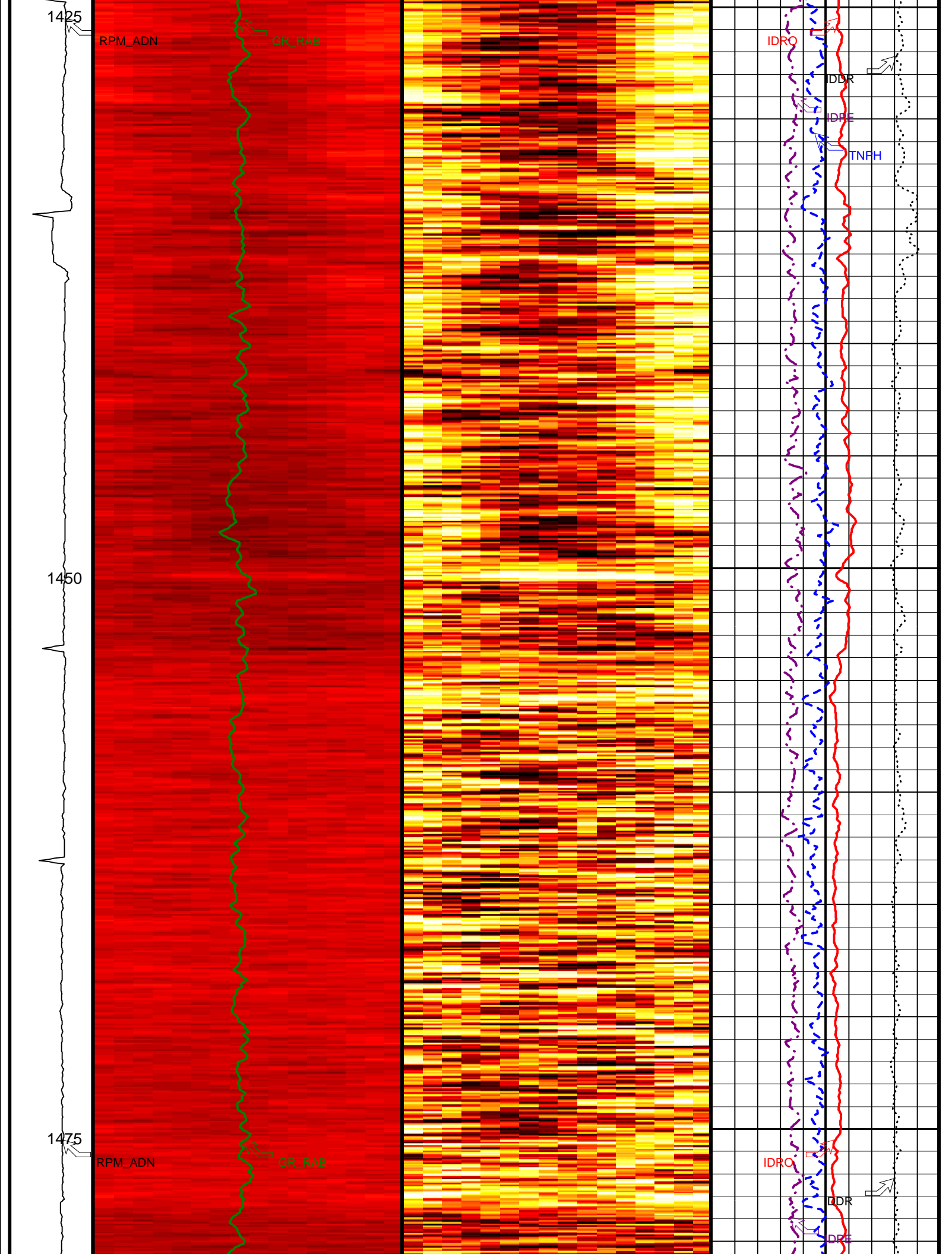
IDDR

DPE

TNPH

1400





1425

RPM_ADN

GR_RAB

IDRO

IDDR

IDRE

TNFH

1450

1475

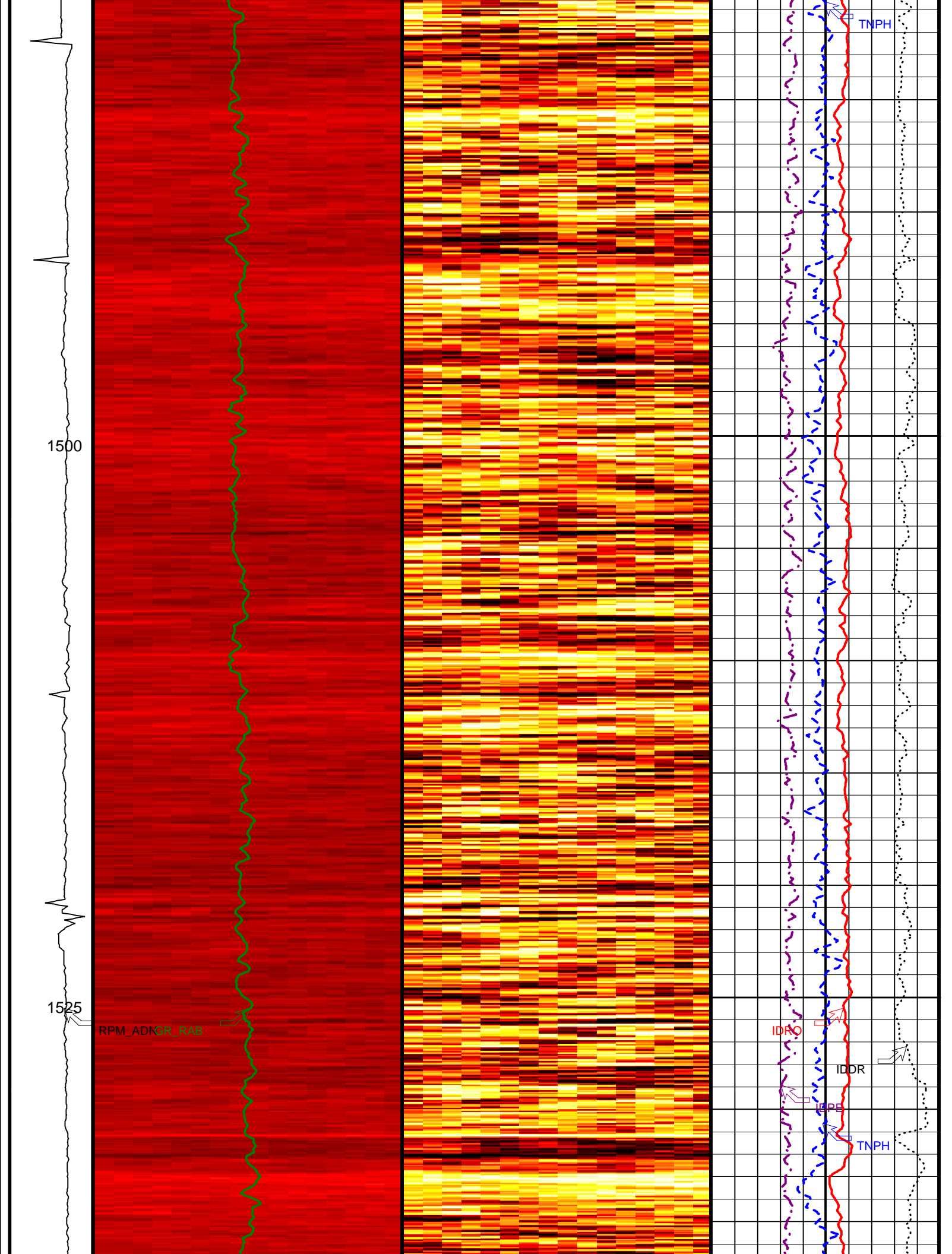
RPM_ADN

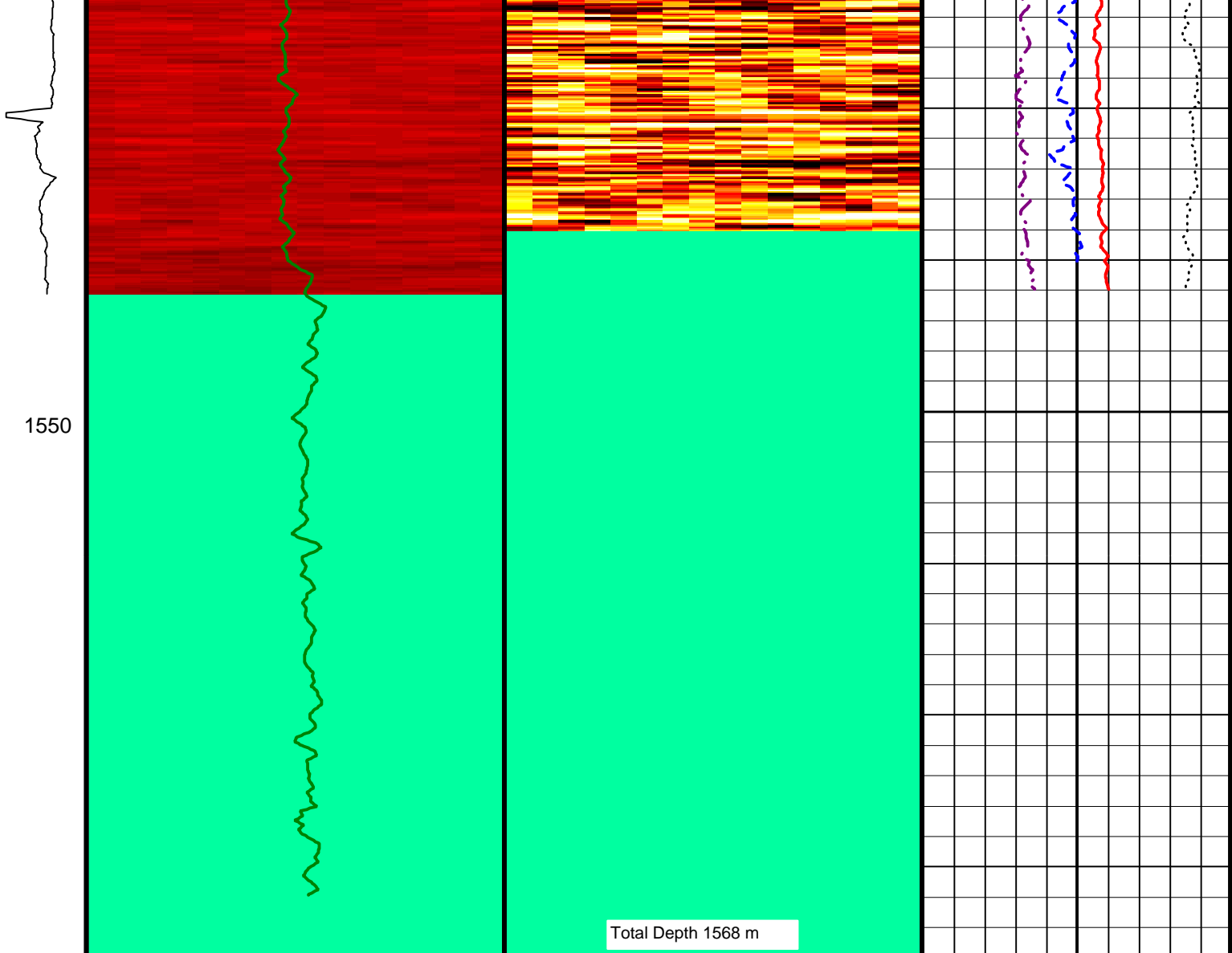
GR_RAB

IDRO

IDDR

IDRE





ADN Rotational Speed (RPM_ADN) (RPM) 0 100	RAB Gamma Ray (GR_RAB) (GAPI) 0 150	 ADN Bulk Density (16-Sector) Dynamic Image Oriented TOH (U,R,B,L,U) (ROSI_DYN) (----)	Image Derived Density (IDRO) (G/C3) 1 2.65
 ADN Bulk Density (16-Sector) Image Oriented TOH (U,R,B,L,U) (ROSI) (G/C3)		Image Derived Density Correction (IDDR) (G/C3) -0.8 0.2	
		Image Derived Photoelectric Factor (IDPE) (----) 0 10	
		Thermal Neutron Porosity (TNP) (PU) 100 0	

IDEAL Version: ID10_0C_04
IDF

Well: IODP Exp 308 Hole U1322A
Field: Mississippi Canyon Block 855
Rig: Joides Resolution
State: Louisiana

VISION Density Neutron - Image
1 : 200 Measured Depth
Recorded Mode Log