

Company: Integrated Ocean Drilling Program

Well: IODP Exp 308 Hole U1323A
 Field: Mississippi Canyon Block 899
 Rig: Joides Resolution State: Louisiana

Rig: Joides Resolution
 Field: Mississippi Canyon Block 899
 Location: Ursa Basin
 Well: IODP Exp 308 Hole U1323A
 Company: Integrated Ocean Drilling Program

VISION Density Neutron - Image 1 : 200 Measured Depth Recorded Mode Log

Total depth:	1518 m	K.B.	Top Drive
Spud date:	15-Jun-2005	G.L.	-1260.5 m
Runs:	2 To 2	D.F.	10.6 m

Permanent datum:	Mean Sea Level	Elev.:	0 m
Log measured from:	Drill Floor		10.6 m above Perm. datum
Depth reference:	Driller's Depth		

Service Order no.	NAD 27	Longitude	Latitude
40012055	UTM Zone 15N	W89.07252	N28.09124

Depth logged:	1271.1 m To 1511 m	Mag decl:	0.17 deg.	Other services:
Date logged:	15-Jun-05 To 16-Jun-05	Mag dip:	58.29 deg.	

Bore hole record

Hole size	from	to	Size	Density	from	to
9.875 in.	1271.1 m	1518 m				

Type	Mud record	from	to	Min	Max	Borehole deviation record
Seawater		1271.1 m	1475 m	0.68 deg.	3.06 deg.	1271.1 m to 1518 m
WBM		1475 m	1518 m			

Unit	TWIS	IDEAL Wis	10_OC_04.1
Depth system	Geolograph	SPM	10_1C_05
		LWD	See Remarks
		MWD	8.0c00

Surface equipment		Software record	

PEF / Density Static Image

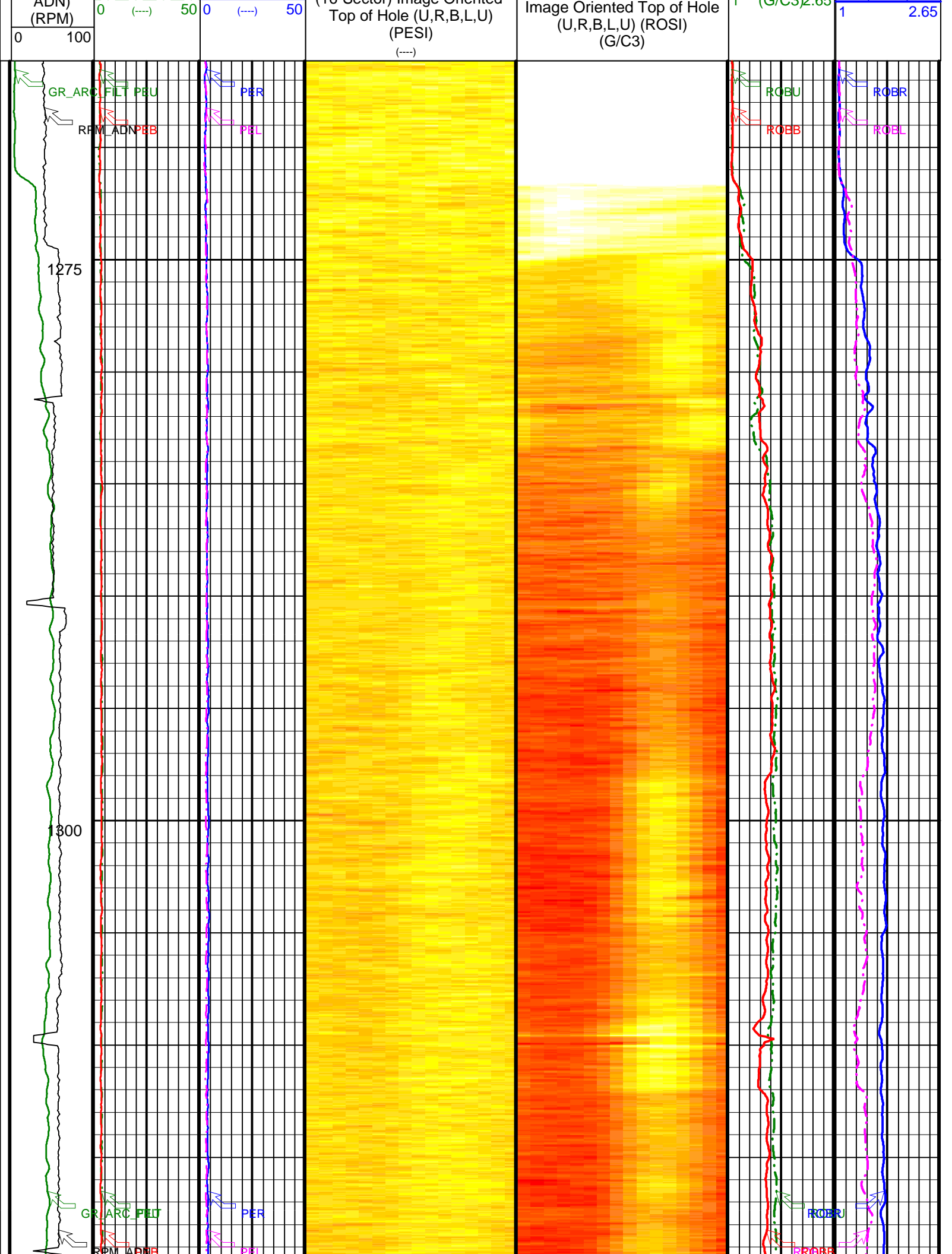
IDEAL Version: ID10_0C_04
 IDF

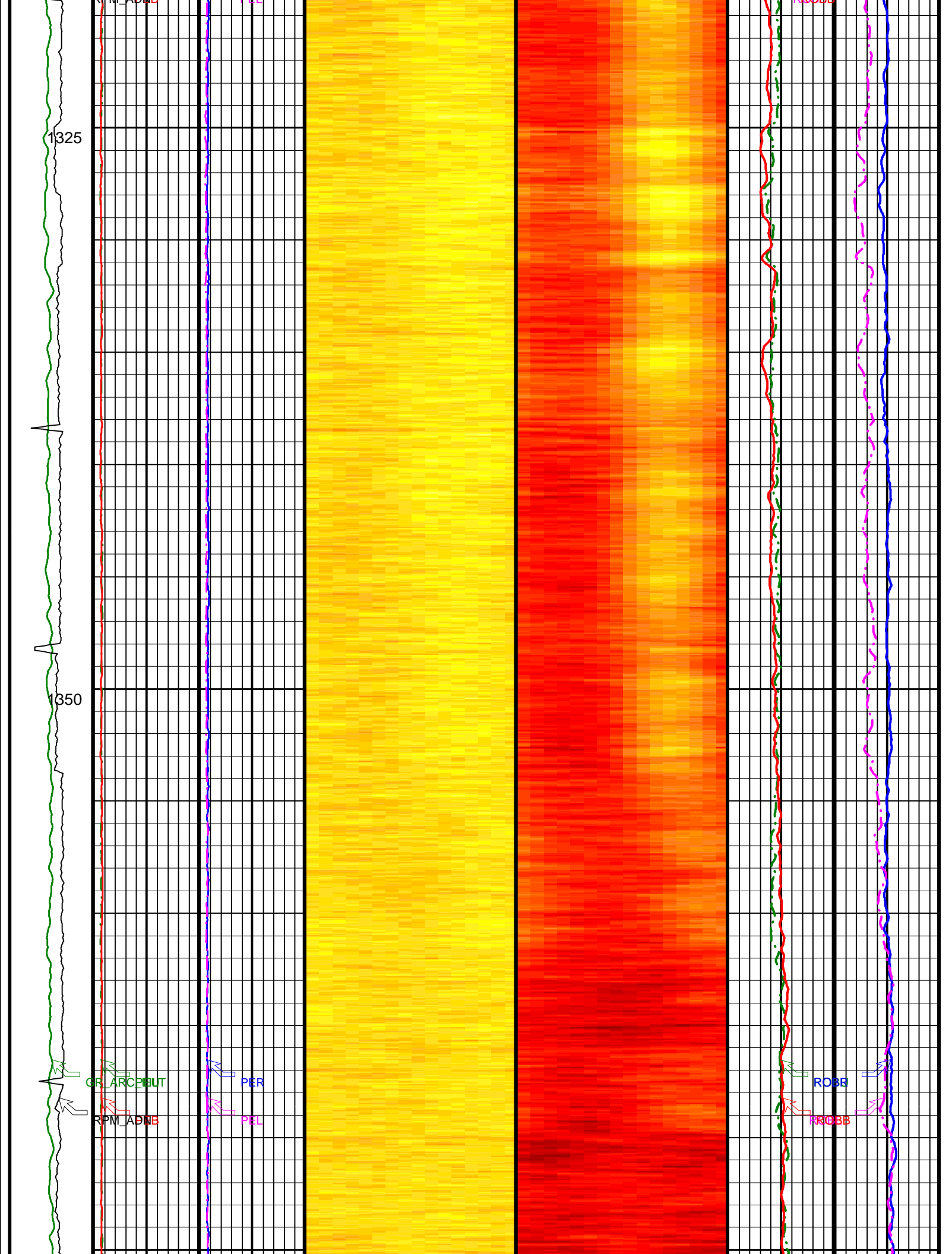
Format: 5 MD VDN DEN/PEF IMAGE

Vertical Scale: 1:200

Graphics File Created: 01-Jul-2005 11:26

ARC Calibrated, Filtered Gamma Ray (GR_ARC_FILT) (GAPI) 0 150	Photoelectric Factor, Bottom (PEB) 0 (----) 50	Photoelectric Factor, Left (PEL) 0 (----) 50	Run 2 Start Depth: 1271.1 m Mud Type: Seawater / WBM GVR s/n 6163 ARC s/n 6201 ADN s/n 6306	Bulk Density, Bottom (ROBB) 1 (G/C3) 2.65	Bulk Density, Left (ROBL) (G/C3) 1 2.65
ADN Rotational Speed (RPM) (ADN)	Photoelectric Factor, Up (PEU)	Photoelectric Factor, Right (PER)	ADN Photoelectric Factor (16-Sector) Image Oriented	Bulk Density, Up (ROBU) (G/C3)	Bulk Density, Right (ROBR) (G/C3)





1375

1400

1425

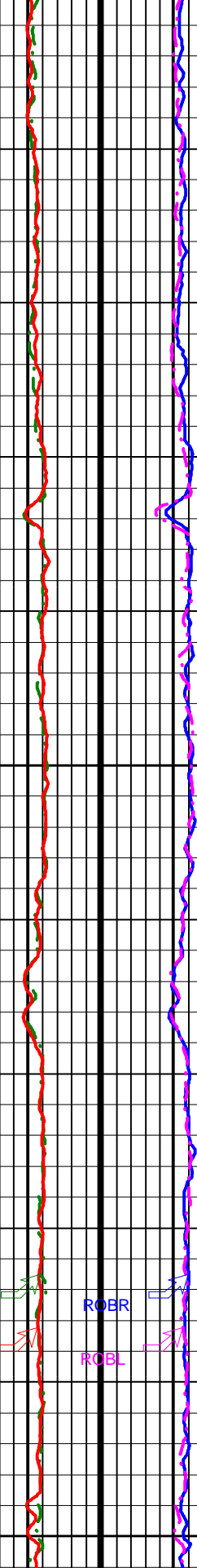


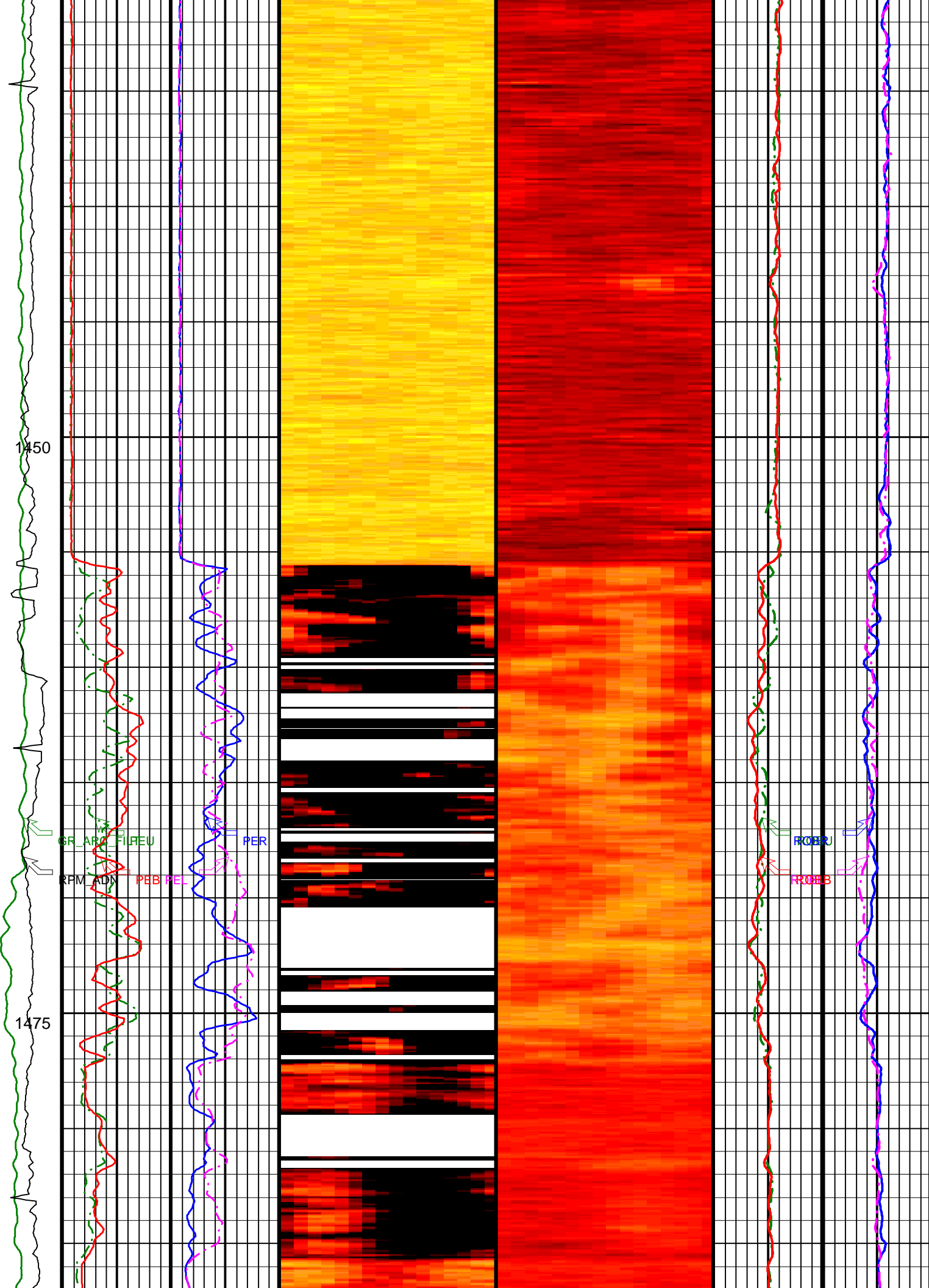
GR_ARC BUT
RPM_ADB

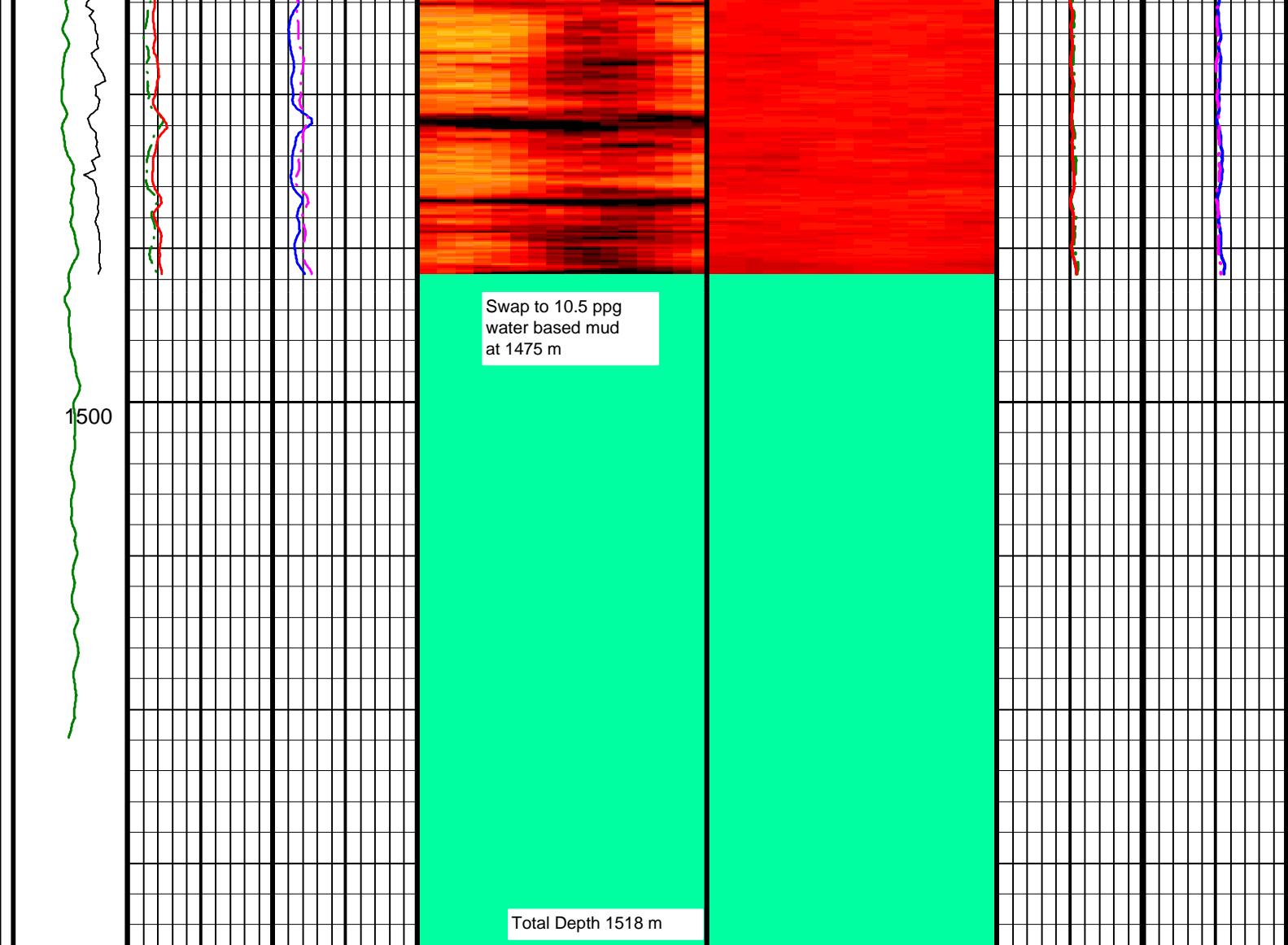
PER
PEL

ROBU
ROBB

ROBR
ROBL







Swap to 10.5 ppg
water based mud
at 1475 m

1500

Total Depth 1518 m

<p>ADN Rotational Speed (RPM_ ADN) (RPM)</p> <p>0 100</p>	<p>Photoelectric Factor, Up (PEU)</p> <p>0 (---) 50</p>	<p>Photoelectric Factor, Right (PER)</p> <p>0 (---) 50</p>	<p>Absent 0.878 2.049 3.219 4.390 5.561 6.732 7.902 9.073 10.244 11.415</p> <p>ADN Photoelectric Factor (16-Sector) Image Oriented Top of Hole (U,R,B,L,U) (PESI) (---)</p>	<p>Absent 1.181 1.288 1.395 1.502 1.610 1.717 1.824 1.932 2.039 2.146</p> <p>ADN Bulk Density (16-Sector) Image Oriented Top of Hole (U,R,B,L,U) (ROSI) (G/C3)</p>	<p>Bulk Density, Up (ROBU)</p> <p>1 (G/C3) 2.65</p>	<p>Bulk Density, Right (ROBR) (G/C3)</p> <p>1 2.65</p>
<p>ARC Calibrated, Filtered Gamma Ray (GR_ ARC_FILT) (GAPI)</p> <p>0 150</p>	<p>Photoelectric Factor, Bottom (PEB)</p> <p>0 (---) 50</p>	<p>Photoelectric Factor, Left (PEL)</p> <p>0 (---) 50</p>			<p>Bulk Density, Bottom (ROBB)</p> <p>1 (G/C3) 2.65</p>	<p>Bulk Density, Left (ROBL) (G/C3)</p> <p>1 2.65</p>

IDEAL Version: ID10_0C_04
IDF

Density Dynamic Image

IDEAL Version: ID10_OC_04
IDF

Format: 5 MD VDN DYNAMIC IMAGE

Vertical Scale: 1:200

Graphics File Created: 01-Jul-2005 01:33

ARC
Calibrated,
Filtered
Gamma
Ray (GR_
ARC_FILT)
(GAPI)
0 150

Run 2
Start Depth: 1271.1 m
Mud Type: Seawater / WBM
GVR s/n 6163
ARC s/n 6201
ADN s/n 6306

Thermal Neutron Porosity
(TNPH)
(PU)
100 0

Image Derived Photoelectric
Factor (IDPE)
(----)
0 50

Image Derived Density
Correction (IDDR)
(G/C3)
-0.8 0.2

ADN
Rotational
Speed
(RPM_
ADN)
(RPM)
0 100

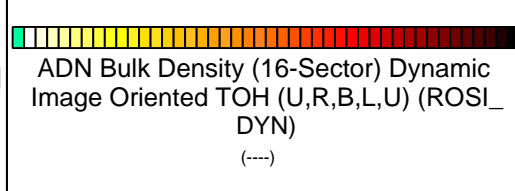
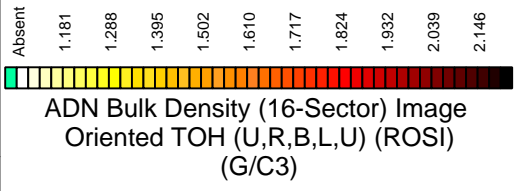
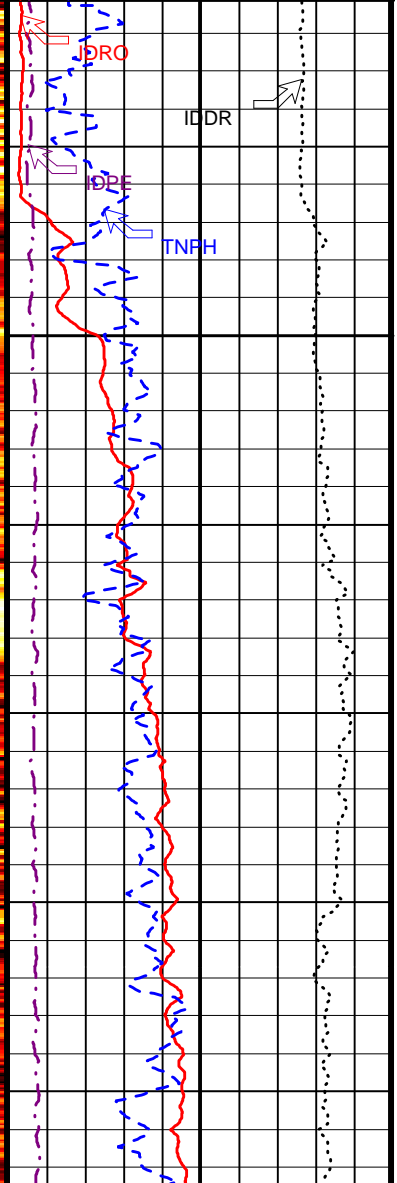
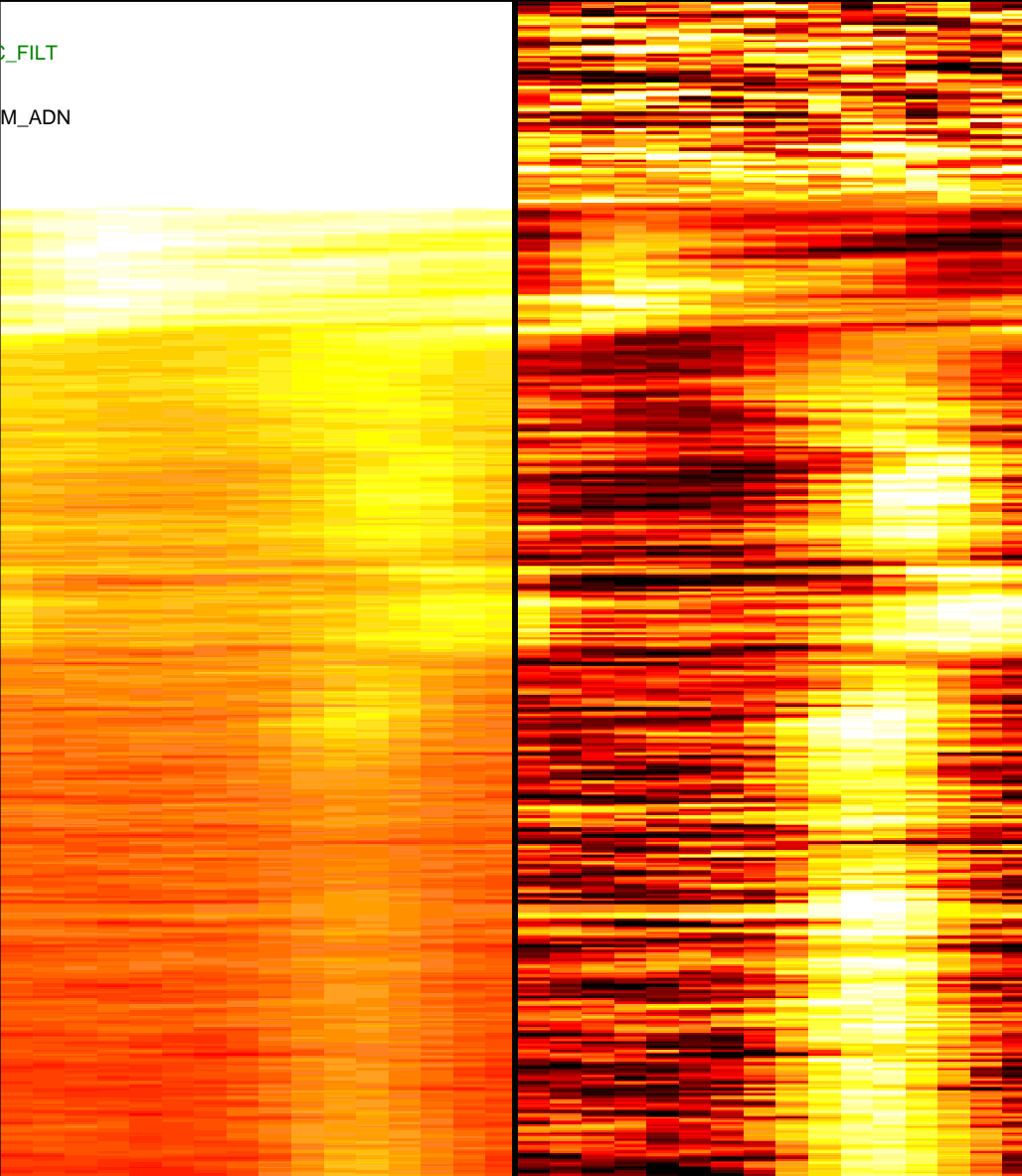
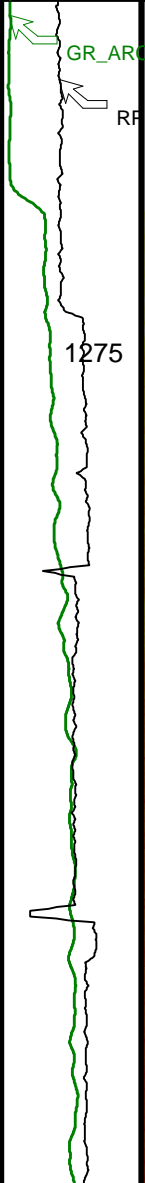
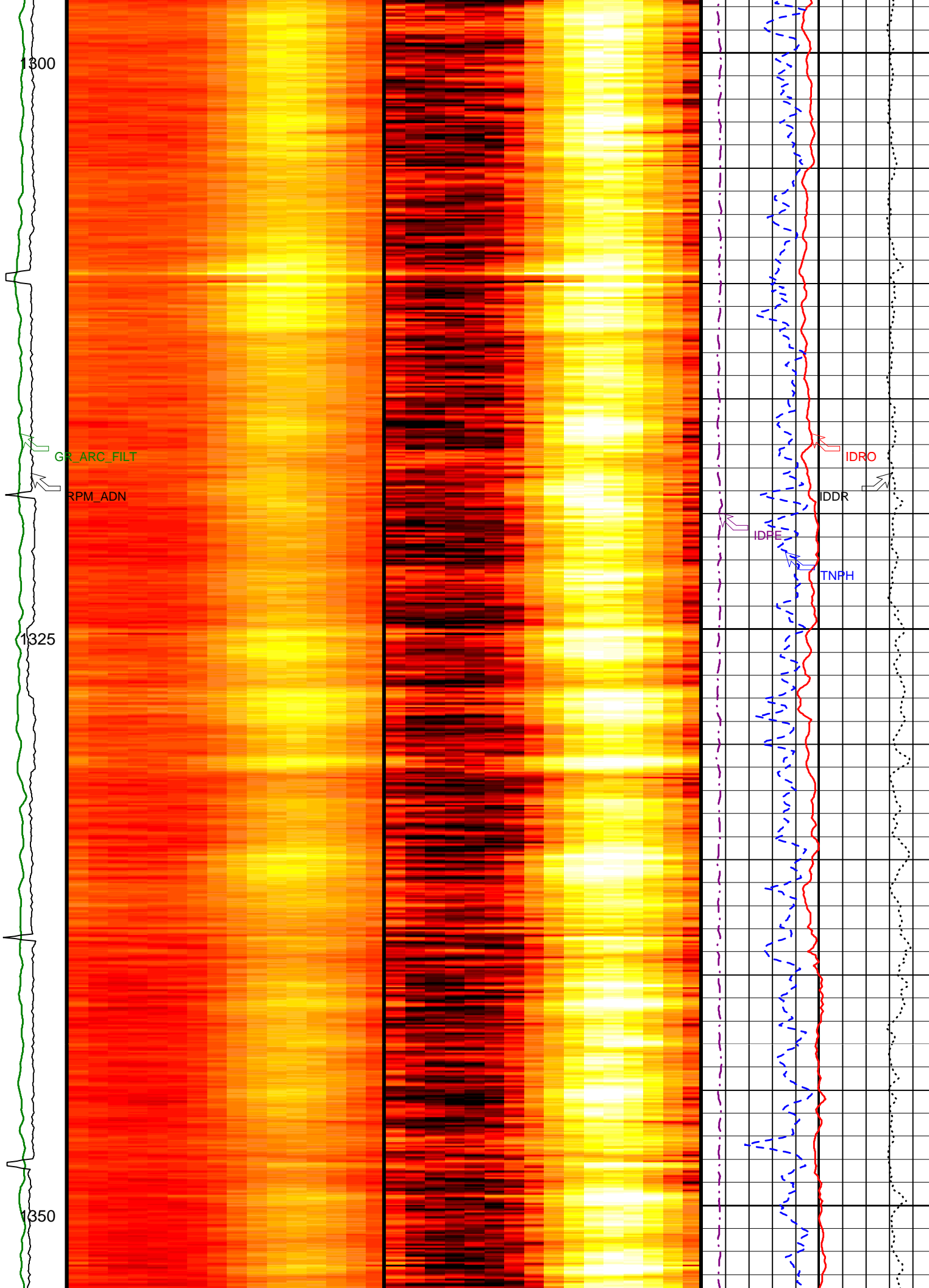
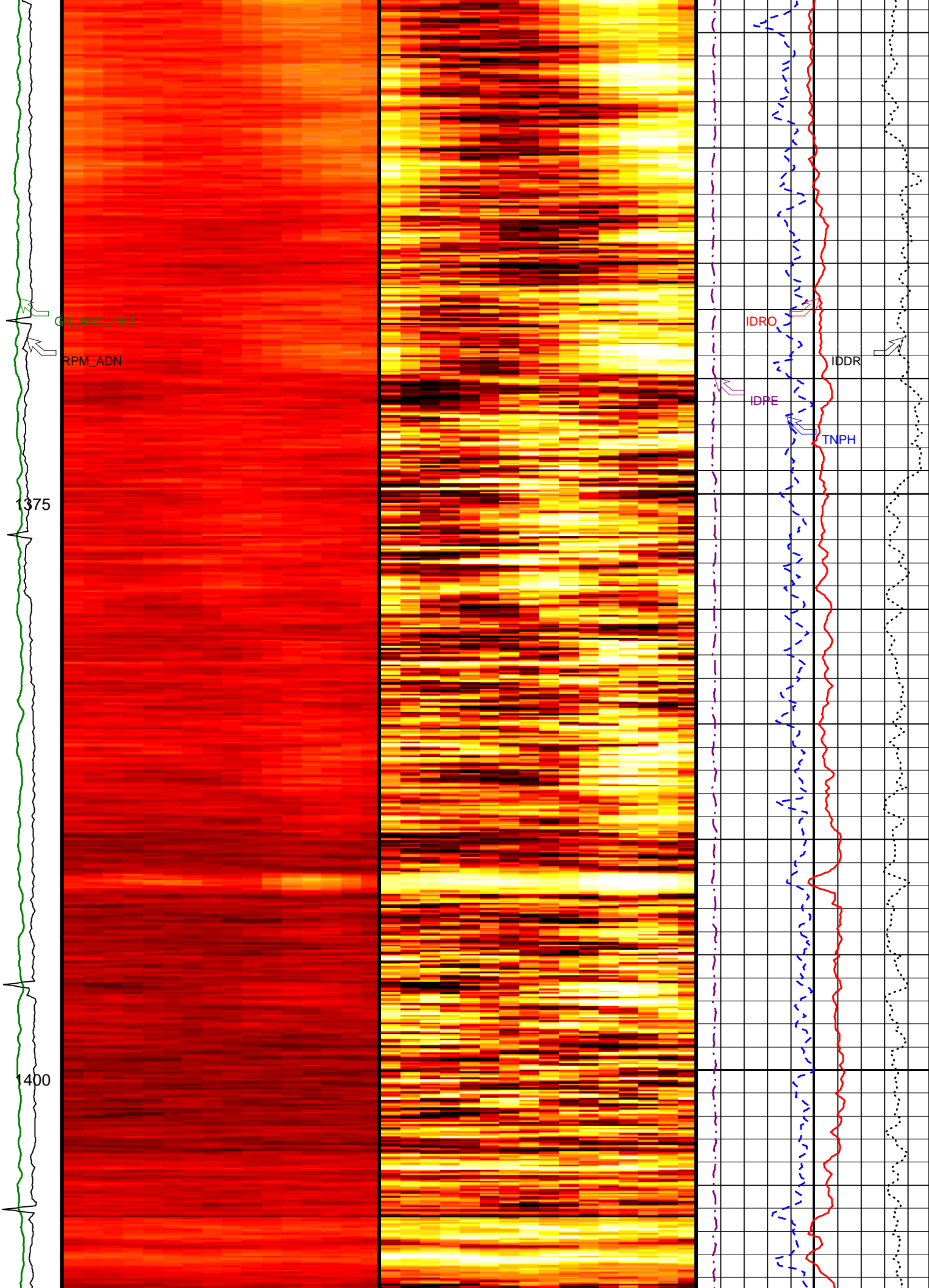
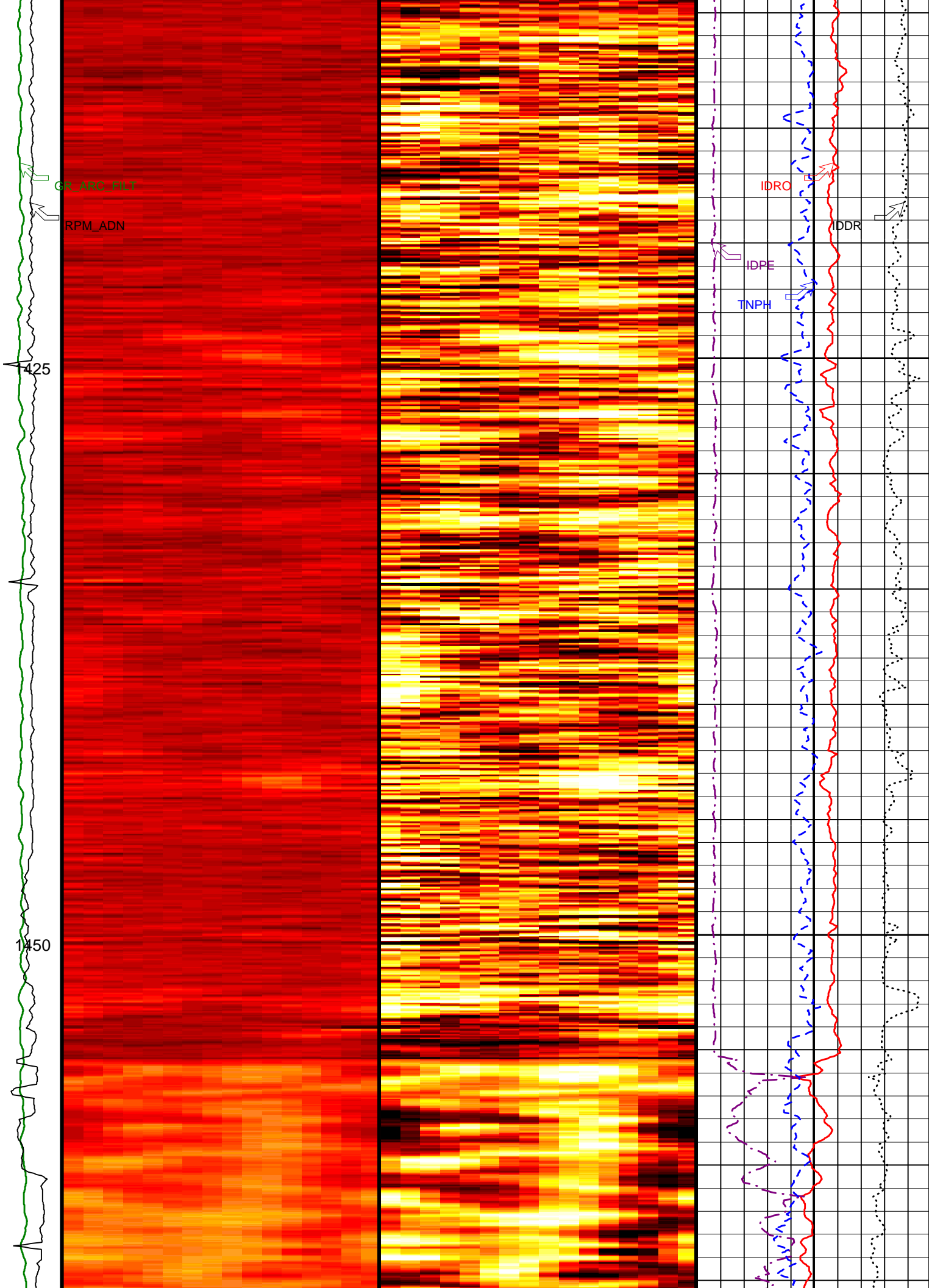


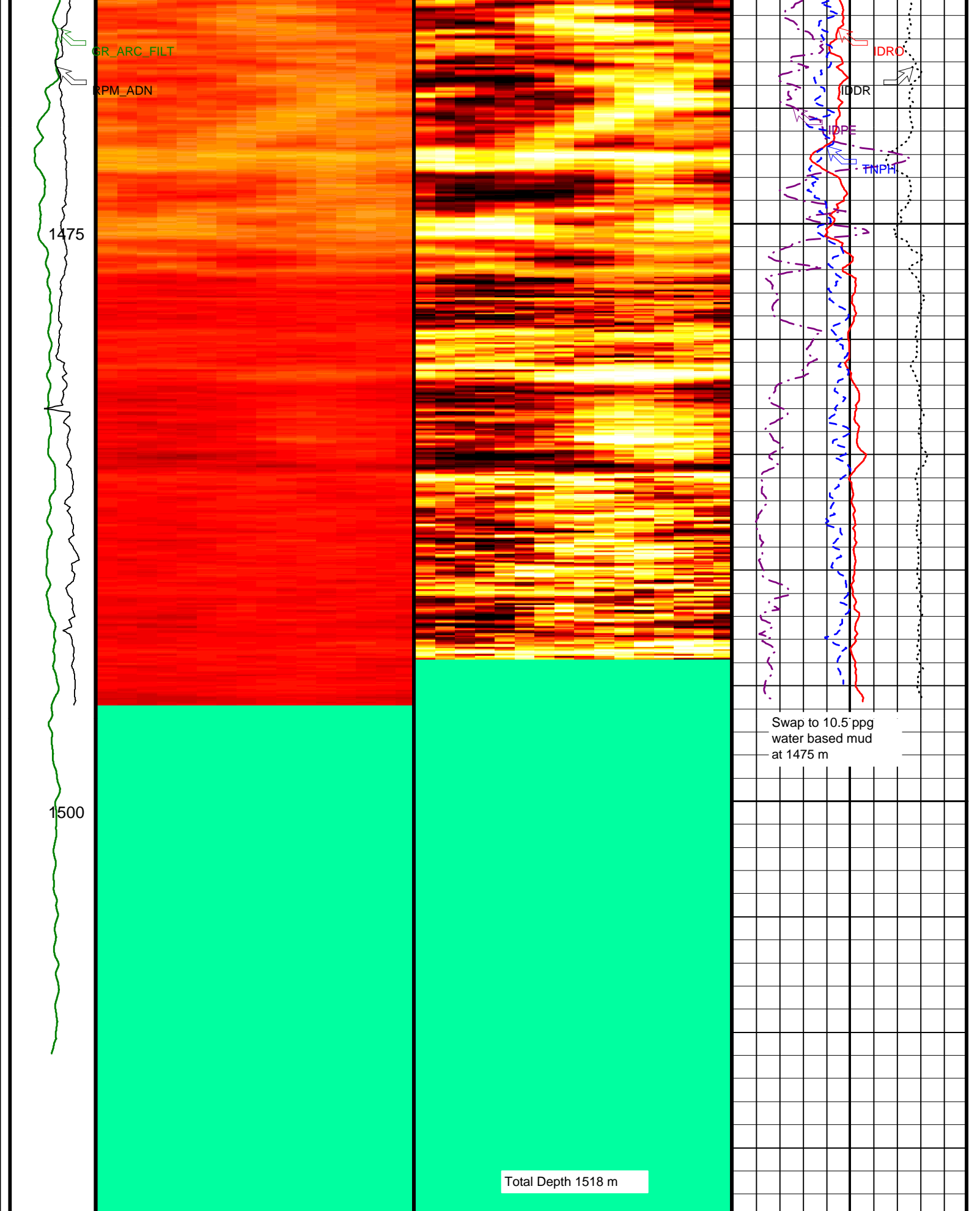
Image Derived Density (IDRO)
(G/C3)
1 2.65











GR_ARC_FILT

RPM_ADN

1475

1500

IDRO

IDDR

IDPI

TNPH

Swap to 10.5 ppg
water based mud
at 1475 m

Total Depth 1518 m

ADN
Rotational
Speed
(RPM_

Absent 1.181 1.288 1.395 1.502 1.610 1.717 1.824 1.932 2.039 2.146

ADN Bulk Density (16 Sector) Image

ADN Bulk Density (16-Sector) Dynamic

Image Oriented TOH (U,R,B,L,U) (ROSI

Image Derived Density (IDRO)

1 (G/C3) 2.65

ADN (RPM)	ADN Bulk Density (16-Sector) Image Oriented TOH (U,R,B,L,U) (ROSI) (G/C3)	DYN) (----	
0 100			
ARC Calibrated, Filtered Gamma Ray (GR_ ARC_FILT) (GAPI)			Image Derived Density Correction (IDDR) -0.8 (G/C3) 0.2
0 150			Image Derived Photoelectric Factor (IDPE) 0 (----) 50
			Thermal Neutron Porosity (TNPH) 100 (PU) 0

IDEAL Version: ID10_0C_04
IDF

Company: Integrated Ocean Drilling Program

Schlumberger

Well: IODP Exp 308 Hole U1323A
Field: Mississippi Canyon Block 899
Rig: Joides Resolution
State: Louisiana

VISION Density Neutron - Image
1 : 200 Measured Depth
Recorded Mode Log