

Company: Integrated Ocean Drilling Program

Well: IODP Exp 308 Hole U1323A  
 Field: Mississippi Canyon Block 899  
 Rig: Joides Resolution State: Louisiana

Rig: Joides Resolution  
 Field: Mississippi Canyon Block 899  
 Location: Ursa Basin  
 Well: IODP Exp 308 Hole U1323A  
 Company: Integrated Ocean Drilling Program

**PERFORM - APWD  
 2 in / hr Time Based  
 Recorded Mode and Real-Time Log**

Total depth: 1518 m  
 Spud date: 15-Jun-2005  
 Runs: 2 To 2  
 Permanent datum: Mean Sea Level Elev.: 0 m  
 Log measured from: Drill Floor 10.6 m above Perm. datum  
 Depth reference: Driller's Depth

Service Order no. NAD 27 Longitude Latitude  
 40012055 UTM Zone 15N W89.07252 N28.09124  
 Depth logged: 1271.1 m To 1518 m Mag decl: 0.17 deg.  
 Date logged: 15-Jun-05 To 16-Jun-05 Mag dip: 58.29 deg. Other services:

Bore hole record		Casing record				
Hole size	from	to	Size	Density	from	to
9.875 in.	1271.1 m	1518 m				

Type	Mud record	from	to	Min	Max	Borehole deviation record	
Seawater		1271.1 m	1475 m	0.68 deg.	3.06 deg.	from	to
WBM		1475 m	1518 m			1271.1 m	1518 m

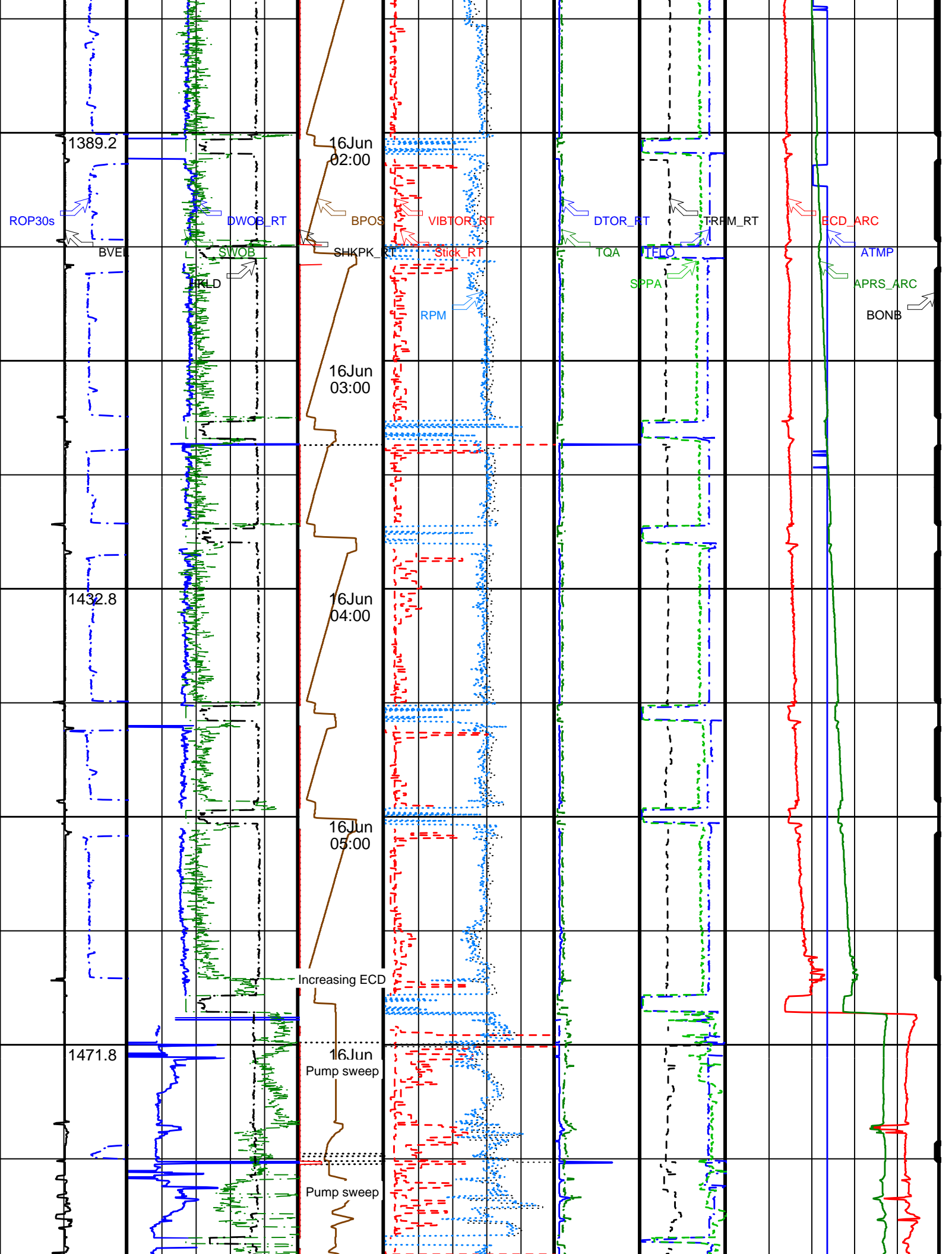
Surface equipment		Software record	
Unit	TWIS	IDEAL Wis	10_OC_04.1
Depth system	Geograph	SPM	10_1C_05
		LWD	See Remarks
		MWD	8.0c00

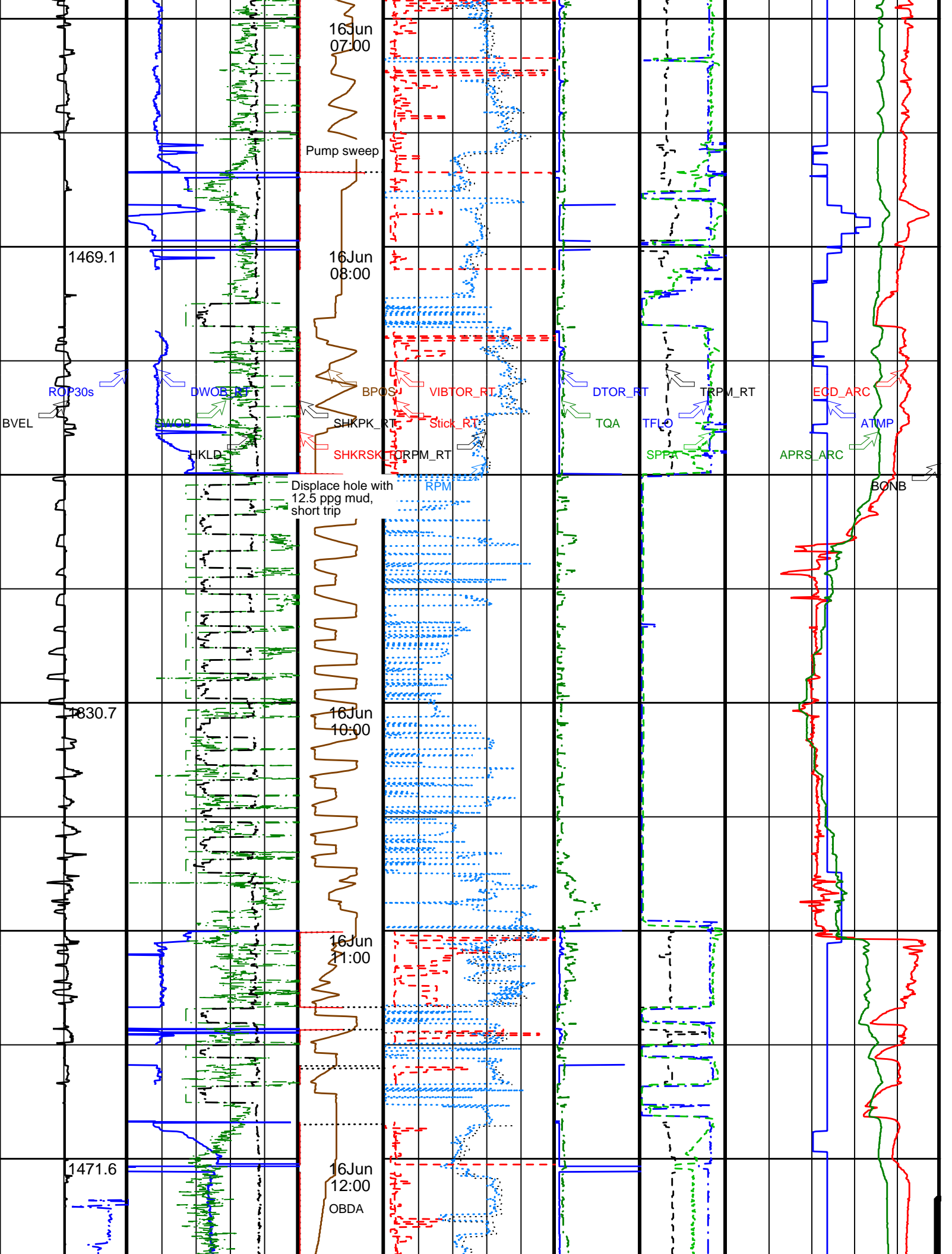
# PERFORM - APWD U1323A

IDEAL Version: ID10\_OC\_04.1 < > Vertical Scale: 2" per 3600S Graphics File Created: 01-Jul-2005 15:22

		Surface_rpm (RPM)		Bit_on_bottom (BONB)	
		0	100	-9	0.2
Block_velocity (BVEL) (M/S)	Hookload (HKLD) (KLBF)	MWD Shock Risk (SHKRSK_RT) (RT)	MWD Collar RPM (CRPM_RT) (RPM)	Stand_pipe_pressure (SPPA) (PSI)	Annulus Pressure (APRS_ARC) (PSI)
-1 1	0 400	0 4	0 100	0 1200	1600 2600
ROP30sec (ROP30s) (M/HR)	Dwob (DWOB_RT) (KLBF)	Shock Peak (SHKPK_RT) (RT)	MWD PEAK TO PEAK RPM (Stick_RT) (RPM)	Surface_torque (TQA) (KFLB)	Total_pump_flow (TFLO) (GPM)
100 0	-10 20	0 20	0 100	0 10	0 500
Bit Depth Value (DEPT) (M)	Surface WOB (SWOB) (KLBF)	Block Position (BPOS) (M)	Torsional Vib (VIBTOR_RT) (RT)	Dtor (DTOR_RT) (KFLB)	Trpm (TRPM_RT) (RPM)
-10 20	0 20	0 40	0 2000	0 10	1000
					Equivalent Circulating Density (ECD_ARC) (LB/G)
					6 16







16 Jun  
07:00

Pump sweep

1469.1

16 Jun  
08:00

ROP30s

DWOB

SWOB

HKLD

BPOSS

VIBTOR\_RT

Stick\_RT

DTOR\_RT

TRP\_M\_RT

ECD\_ARC

ATMP

Displace hole with  
12.5 ppg mud,  
short trip

RPM

BONB

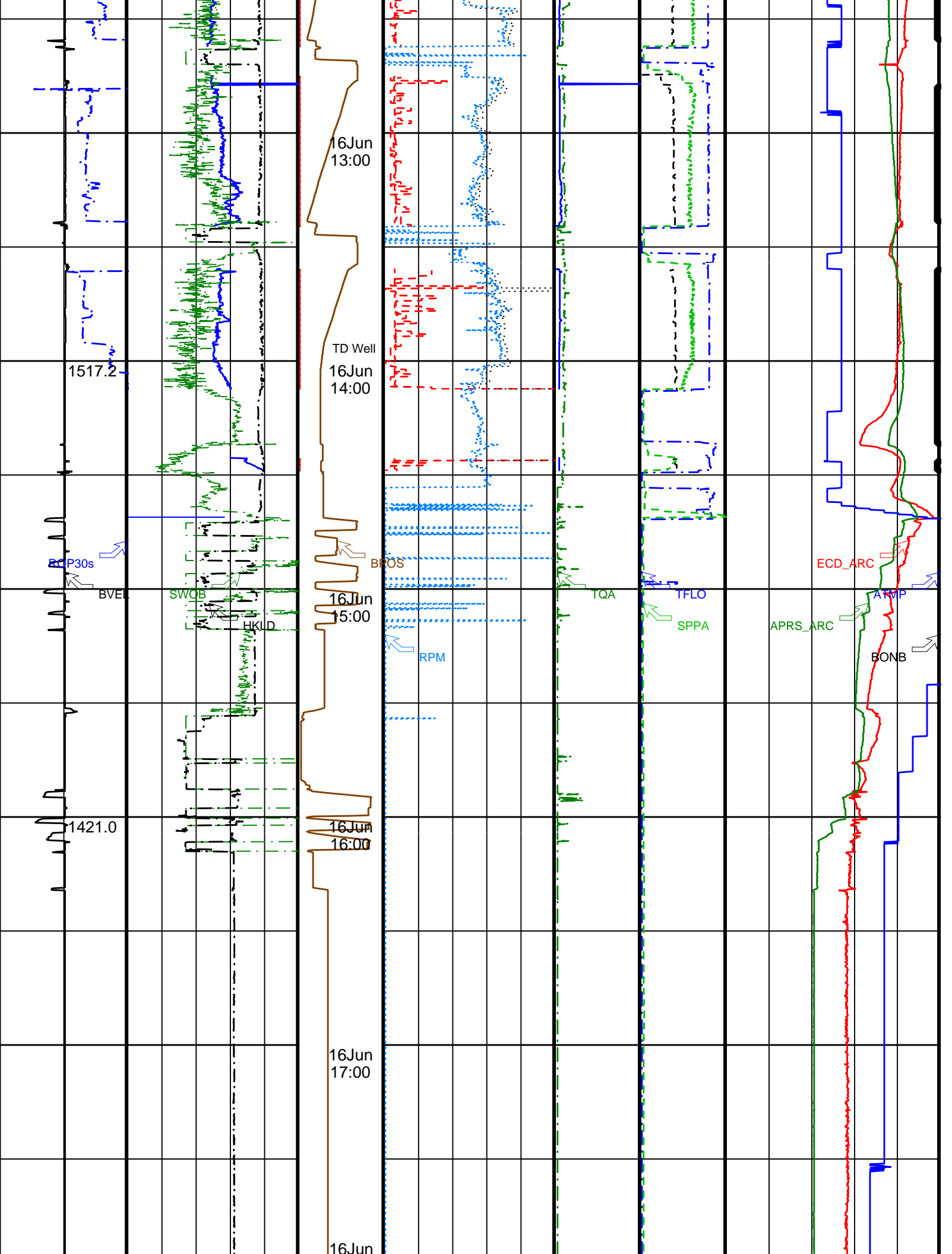
1830.7

16 Jun  
10:00

16 Jun  
11:00

1471.6

16 Jun  
12:00  
OBDA



1354.0 Bit Depth Value (DEPT) (M)	Surface WOB (SWOB) (KLBF)	Block Position (BPOS) (M)	Torsional Vib (VIBTOR_ RT)	Dtor (DTOR_RT) (KFLB)	Trpm (TRPM_RT) (RPM)	Equivalent Circulating Density (ECD_ARC) (LB/G)
-10 20	0 40	0 2000	0 10	1000 5000	6 16	
ROP30sec (ROP30s) (M/HR)	Dwob (DWOB_RT) (KLBF)	Shock Peak (SHKPK_ RT)	MWD PEAK TO PEAK RPM (Stick_RT) (RPM)	Surface_ torque (TQA) (KFLB)	Total_ pump_flow (TFLO) (GPM)	Annulus Temperature (ATMP) (DEGC)
100 0	-10 20	0 20	0 100	0 10	0 500	0 15
Block_velocity (BVEL) (M/S)	Hookload (HKLD) (KLBF)	MWD Shock Risk (SHKRSK_ RT)	MWD Collar RPM (CRPM_RT) (RPM)		Stand_ pipe_ pressure (SPPA) (PSI)	Annulus Pressure (APRS_ ARC) (PSI)
-1 1	0 400	0 4	0 100		0 1200	1600 2600
			Surface_rpm (RPM) (RPM)			Bit_on_bottom (BONB) (---)
			0 100			-9 0.2

Company: Integrated Ocean Drilling Program

Well: IODP Exp 308 Hole U1323A

Field: Mississippi Canyon Block 899

Rig: Joides Resolution

State: Louisiana

PERFORM - APWD  
2 in / hr Time Based  
Recorded Mode and Real-Time Log

**Schlumberger**