

RES_BIT

1425

1450

1475

GR_RAB

ROP5_RM

RES_BIT

RPM_RAB

RES_BS

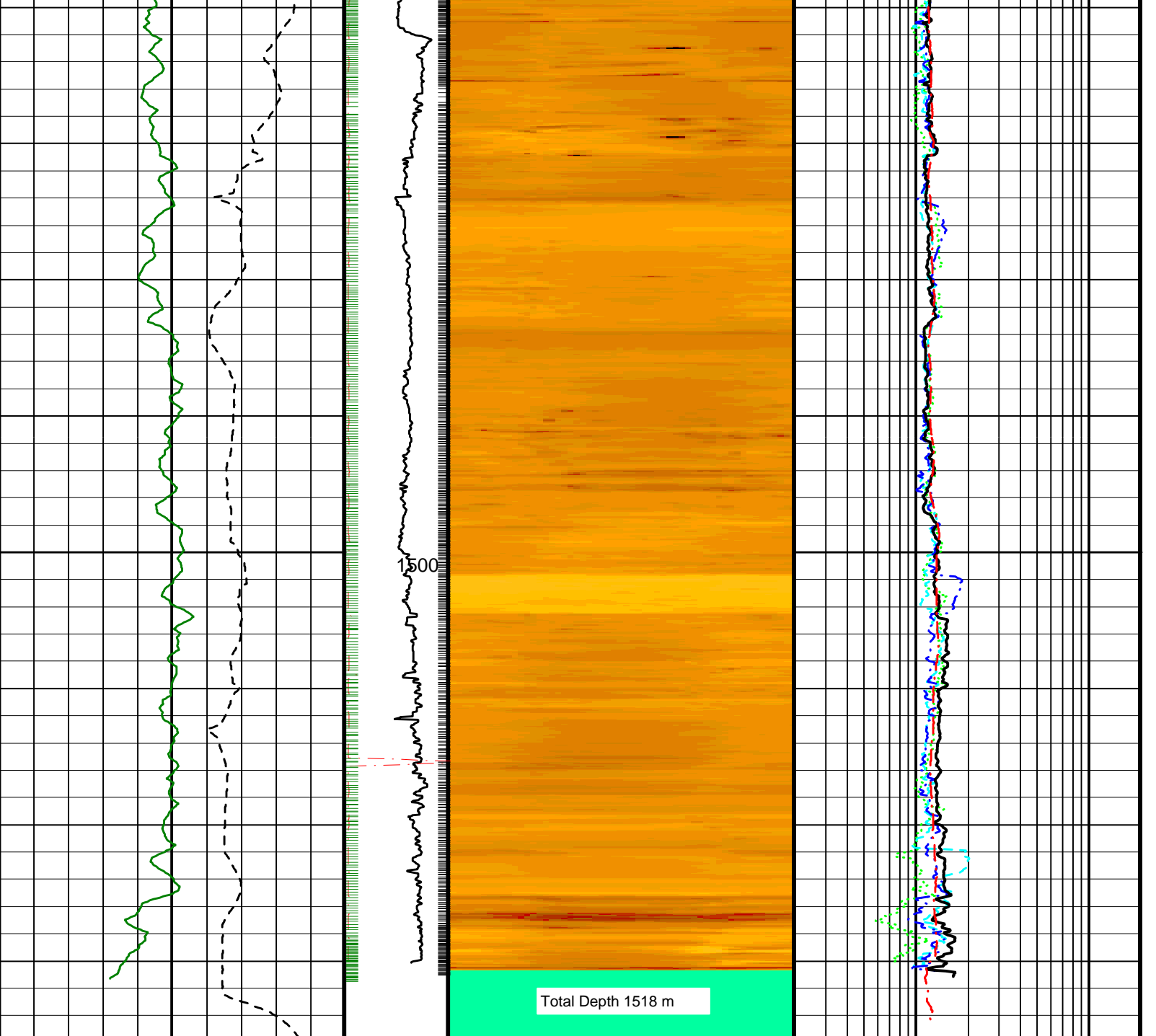
RES_BM

RES_ED

RES_RING

RES_BIT

Swap to 10.5 ppg
water based mud
at 1475 m



Total Depth 1518 m

<p>RAB Gamma Ray (GR_RAB) (GAPI)</p> <p>0 150</p>	<p>Angular Acceleration Indicator (AAI)</p> <p>(---) 0 200</p>	<p>Absent 0.811 0.825 0.861 0.944 1.160 1.592 2.312 3.320 4.544 6.488</p> <p>Deep Button Image (R3IM) (OHMM)</p>	<p>Shallow Button Resistivity (RES_BS) (OHMM)</p> <p>0.2 20</p>
<p>ROP: 5 Feet Average (ROP5_RM) (M/HR)</p> <p>100 0</p>	<p>RAB Rotational Speed (RPM_RAB) (RPM)</p> <p>0 100</p>		<p>Medium Button Resistivity (RES_BM) (OHMM)</p> <p>0.2 20</p>
			<p>Deep Button Resistivity (RES_BD) (OHMM)</p> <p>0.2 20</p>
			<p>Bit Resistivity (RES_BIT) (OHMM)</p> <p>0.2 20</p>
			<p>Ring Resistivity (RES_RING) (OHMM)</p> <p>0.2 20</p>

└ Ring Samples

└ Gamma Ray Samples

IDEAL Version: ID10_0C_04

IDF

GVR Dynamic Image

IDEAL Version: ID10_0C_04

IDF

Format: GEOVIS_RES_DYN_IMAGE

Vertical Scale: 1:200

Graphics File Created: 01-Jul-2005 01:11

PIP SUMMARY

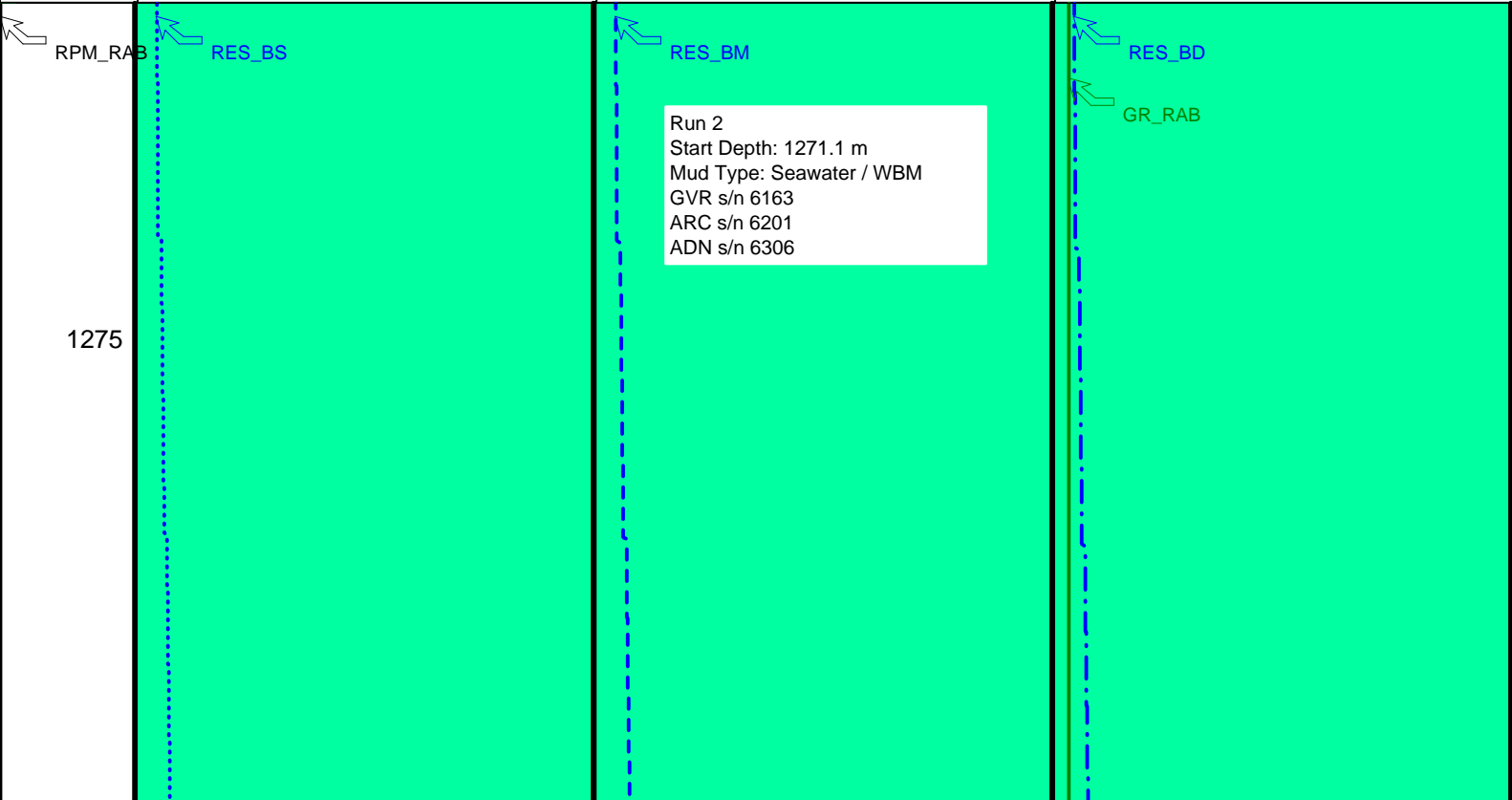
└ Ring Samples

└ Gamma Ray Samples



RAB Gamma Ray (GR_RAB)
(GAPI) 0 150

RAB Rotational Speed (RPM_RAB) (RPM)	Shallow Button Resistivity (RES_BS) (OHMM)	Medium Button Resistivity (RES_BM) (OHMM)	Deep Button Resistivity (RES_BD) (OHMM)
0 100	0 100	0 100	0 100



GVR battery depleted
No data recorded prior
to 1301 m

1300

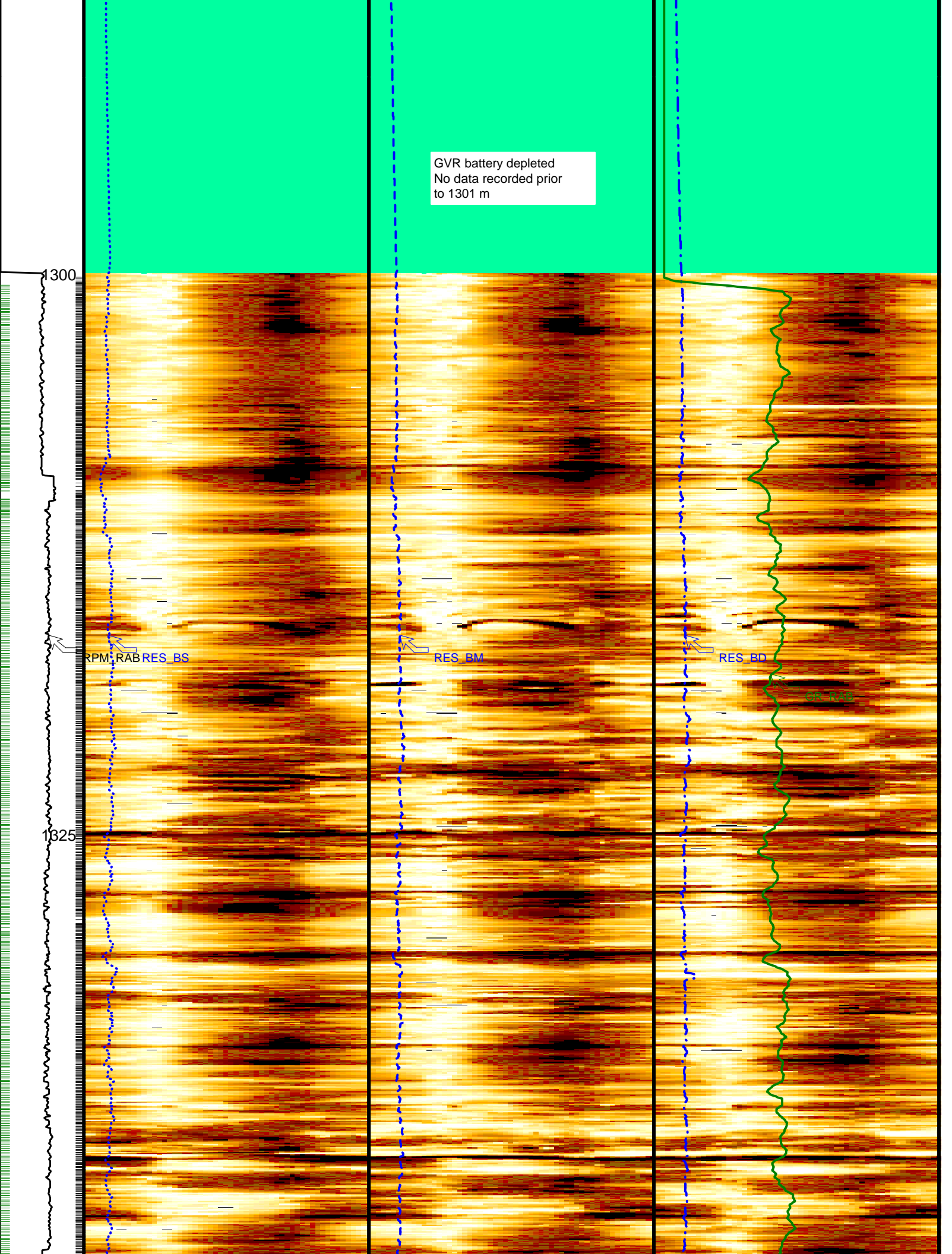
1325

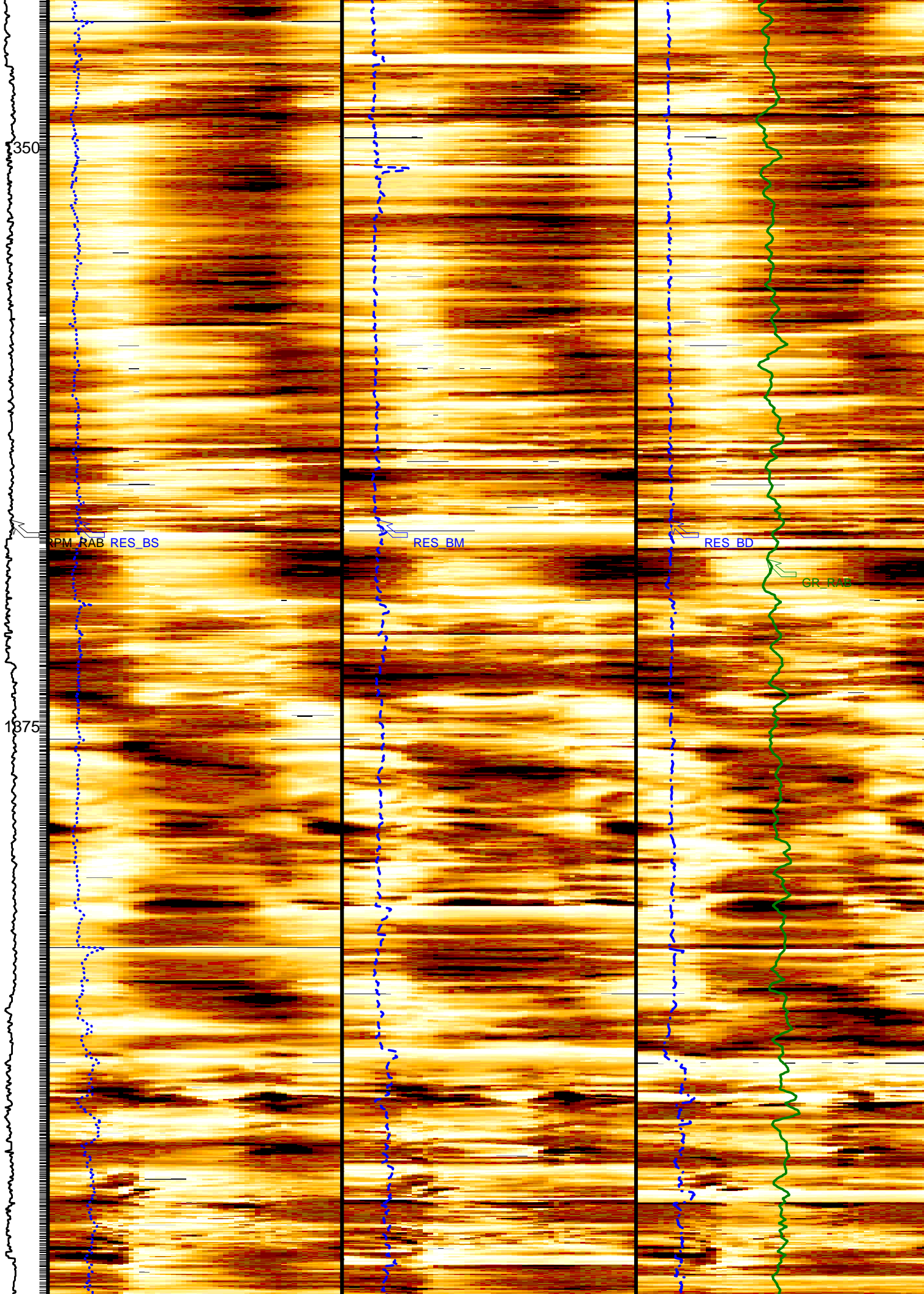
RPM RAB RES BS

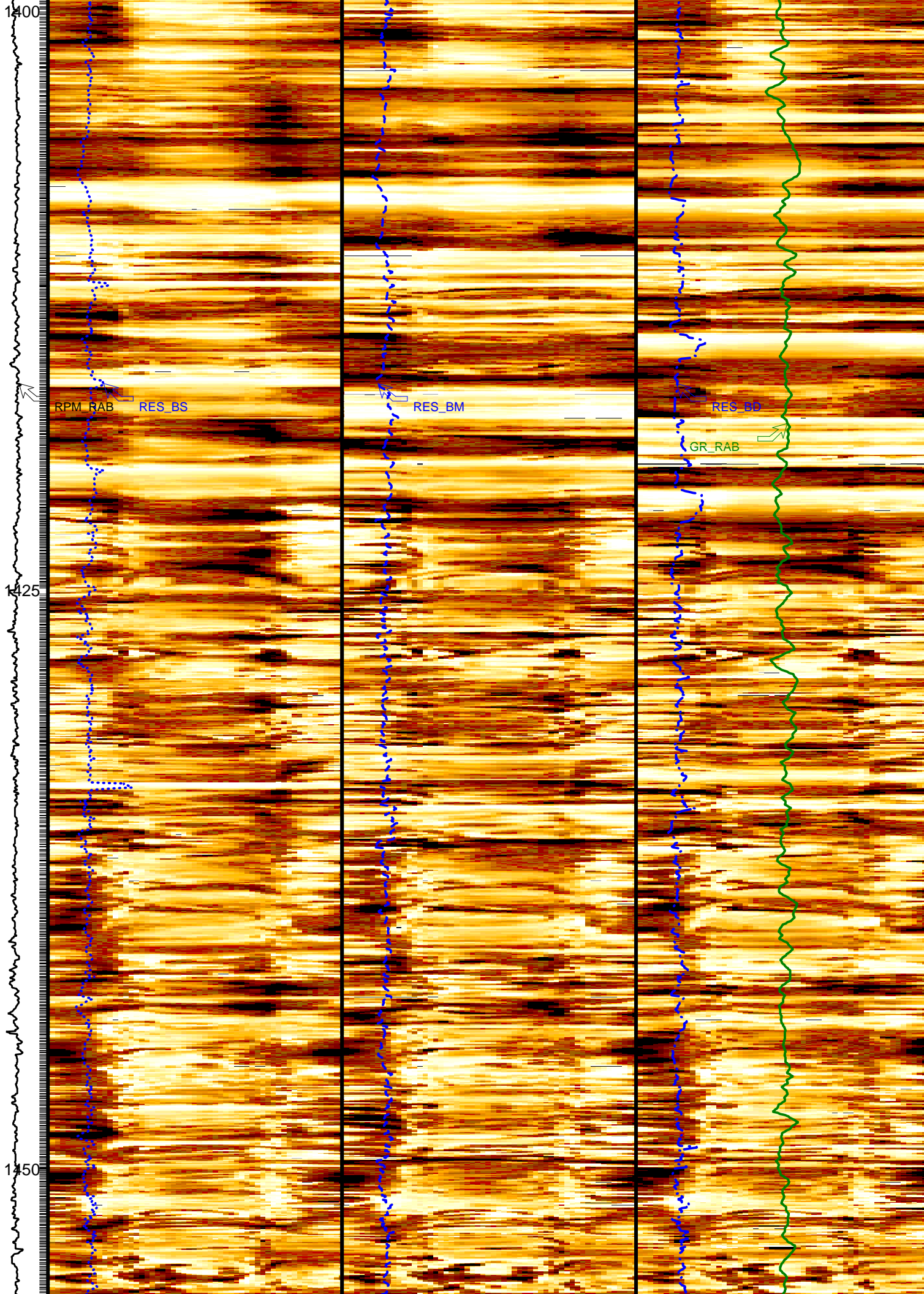
RES BM

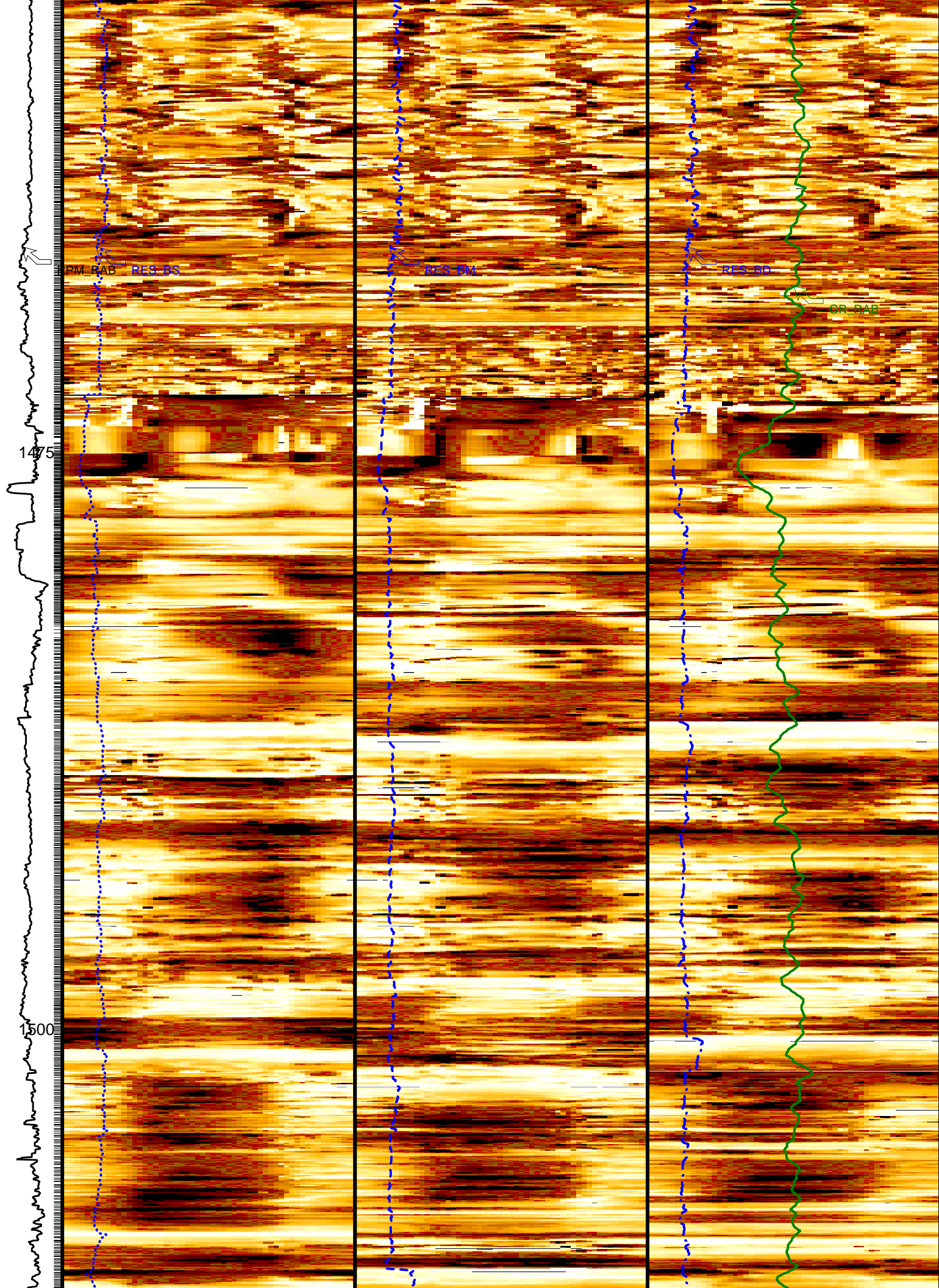
RES BD

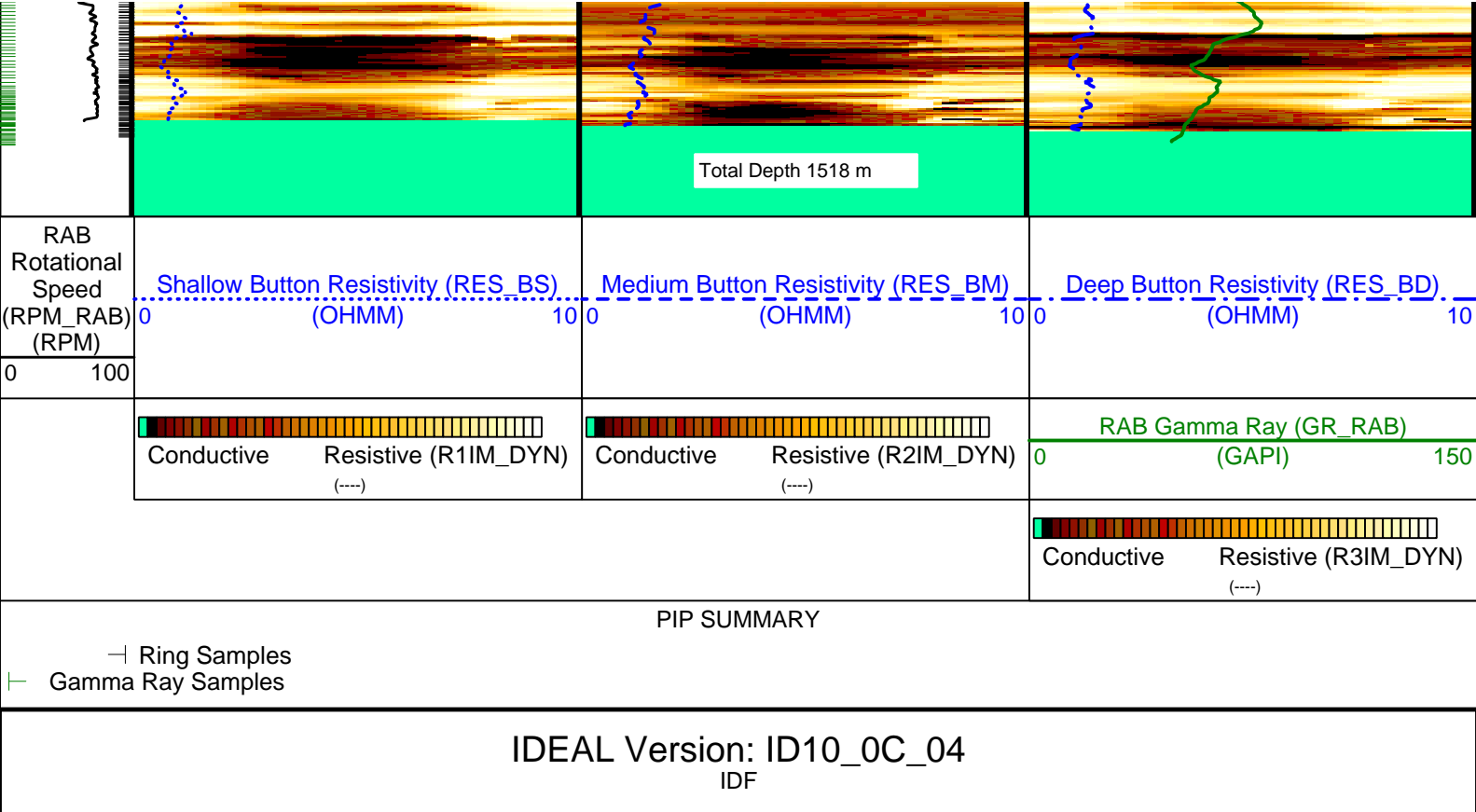
GR RAB











Company: Integrated Ocean Drilling Program

Schlumberger

Well: IODP Exp 308 Hole U1323A

Field: Mississippi Canyon Block 899

Rig: Joides Resolution

State: Louisiana

GeoVISION Resistivity - Image
1 : 200 Measured Depth
Recorded Mode Log