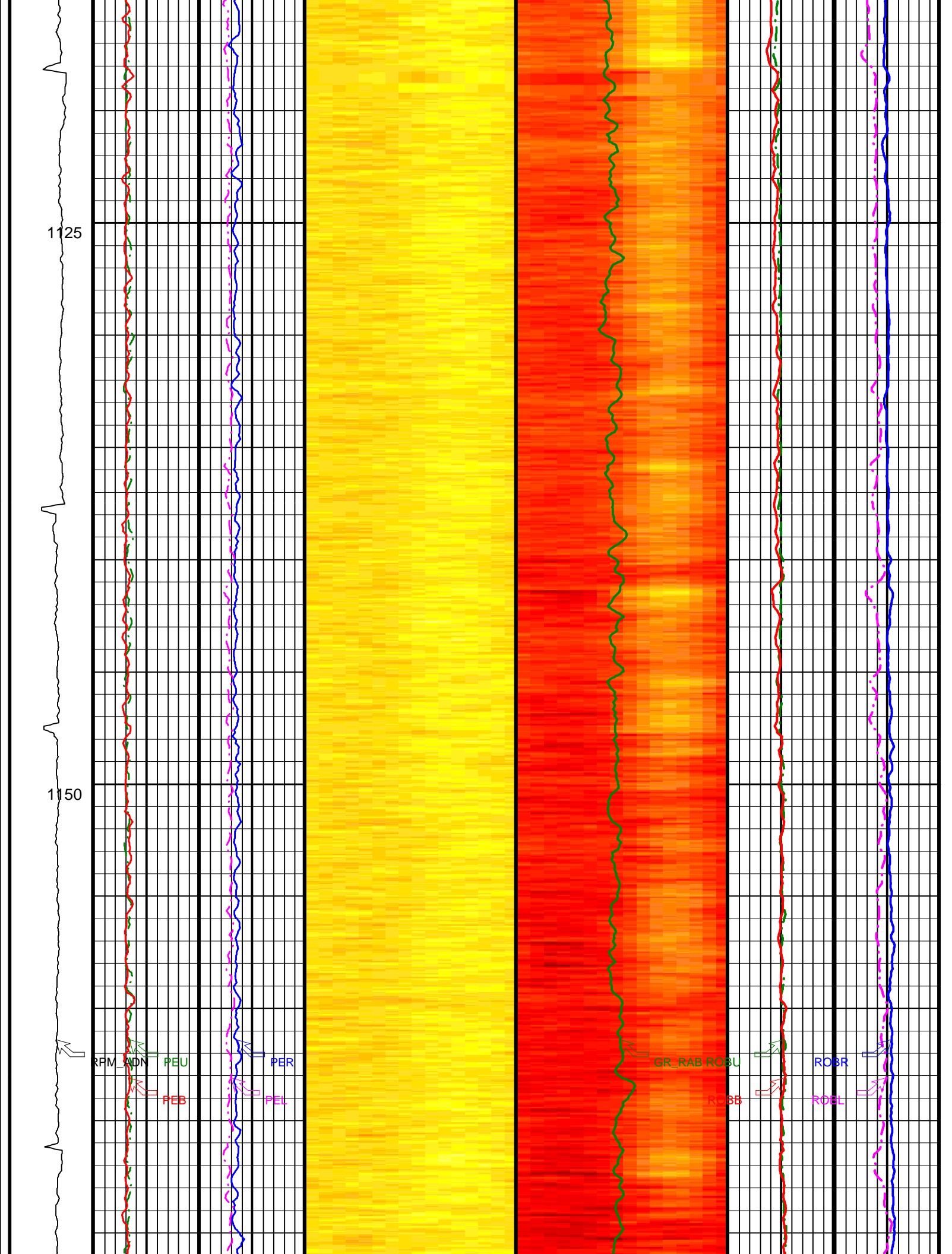


1125

1150

RFM_NDN PEU FEB PER PEL

GR_RAB ROBU ROBR ROBL ROBB



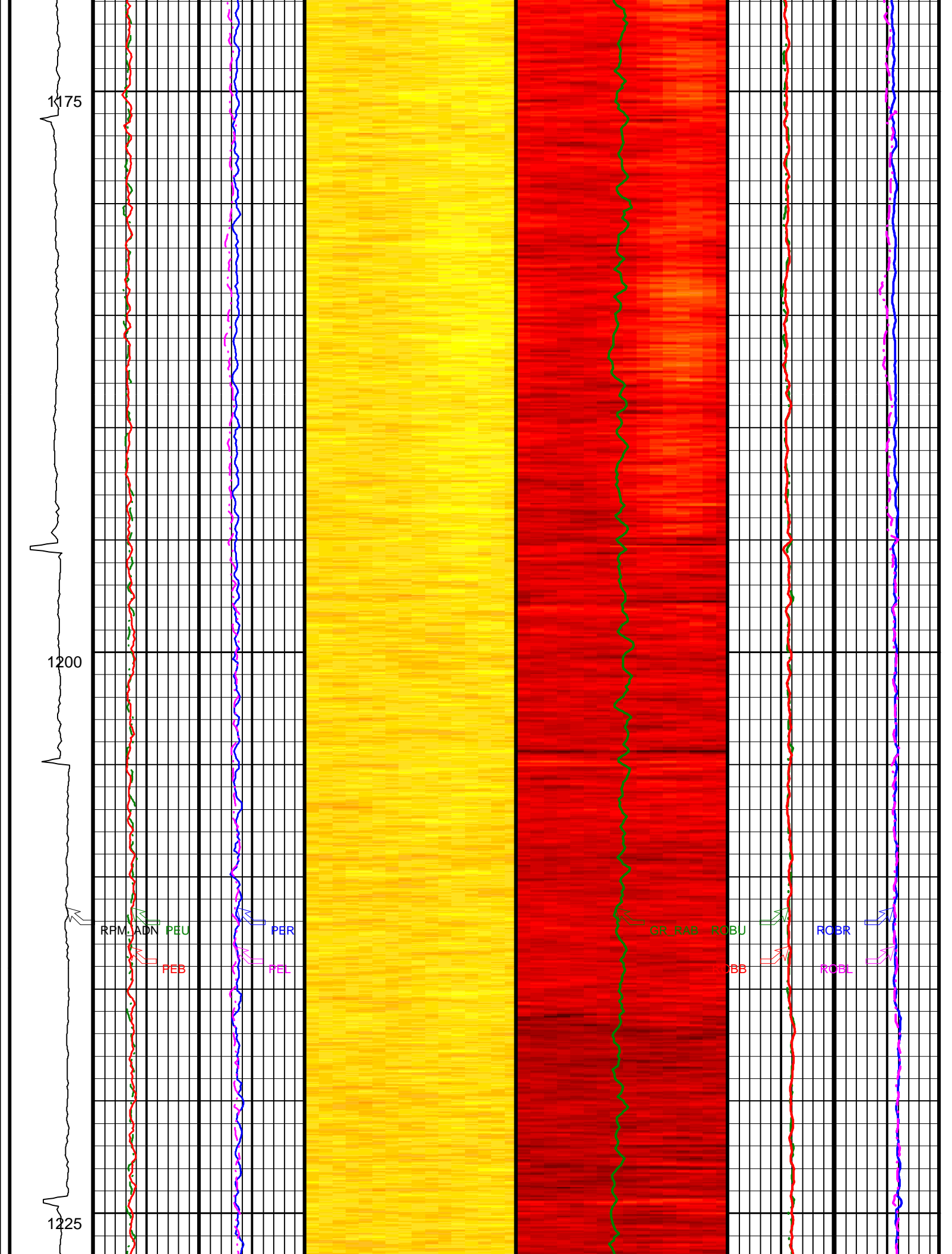
1175

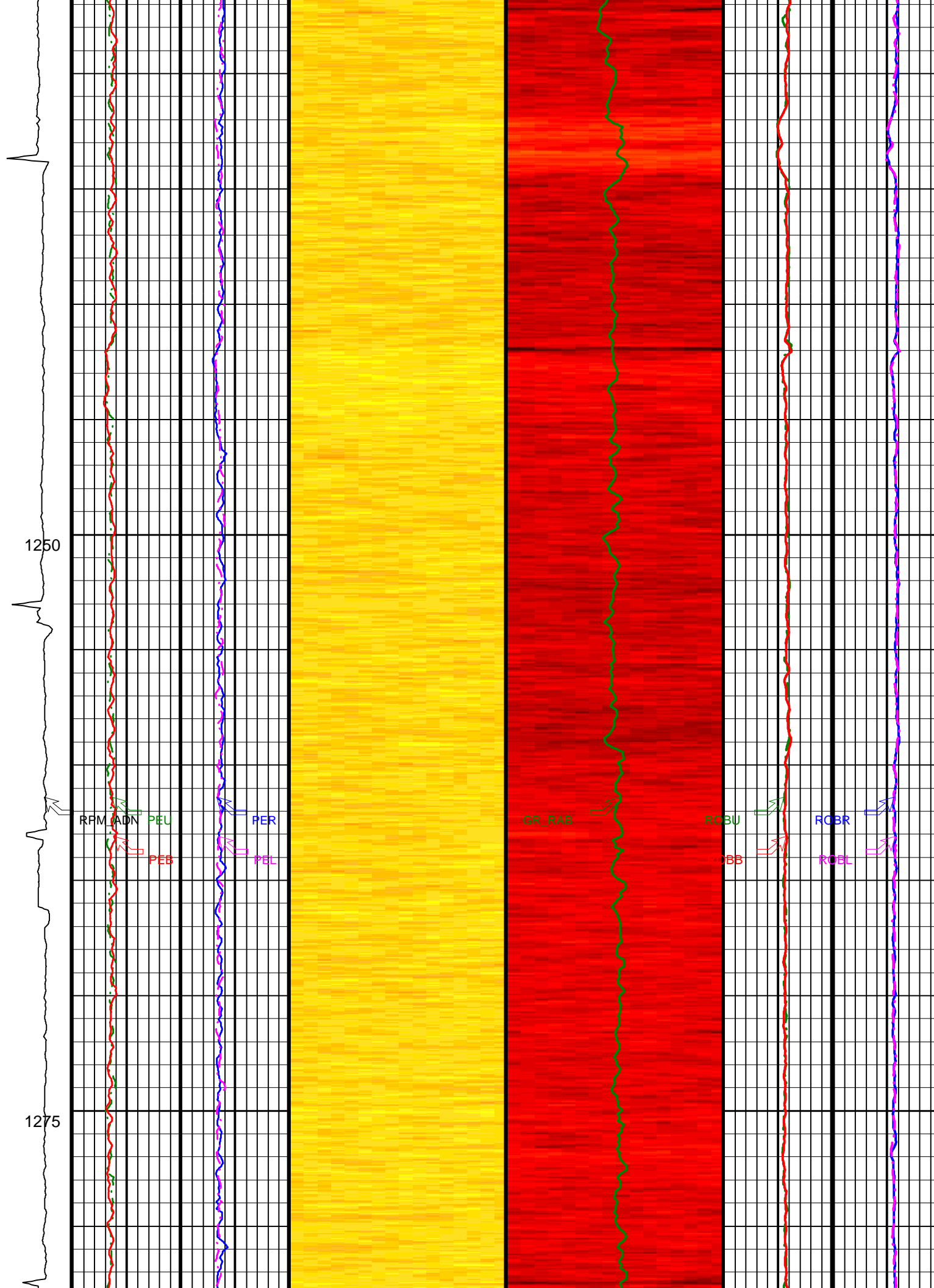
1200

1225

RFM ADN PEU
PEB PER
PEL

GR_RAB ROBU
ROBB ROBR
ROBL



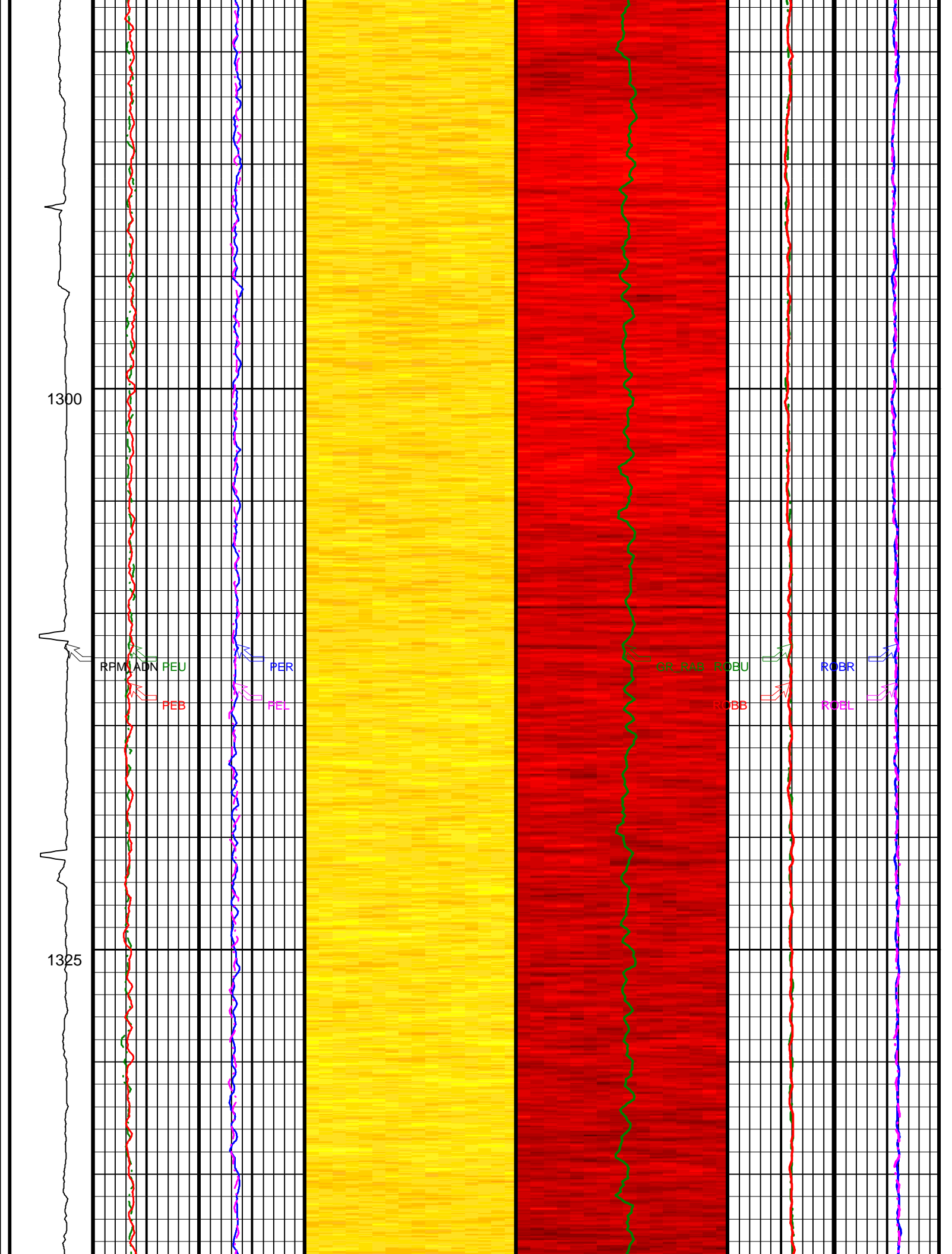


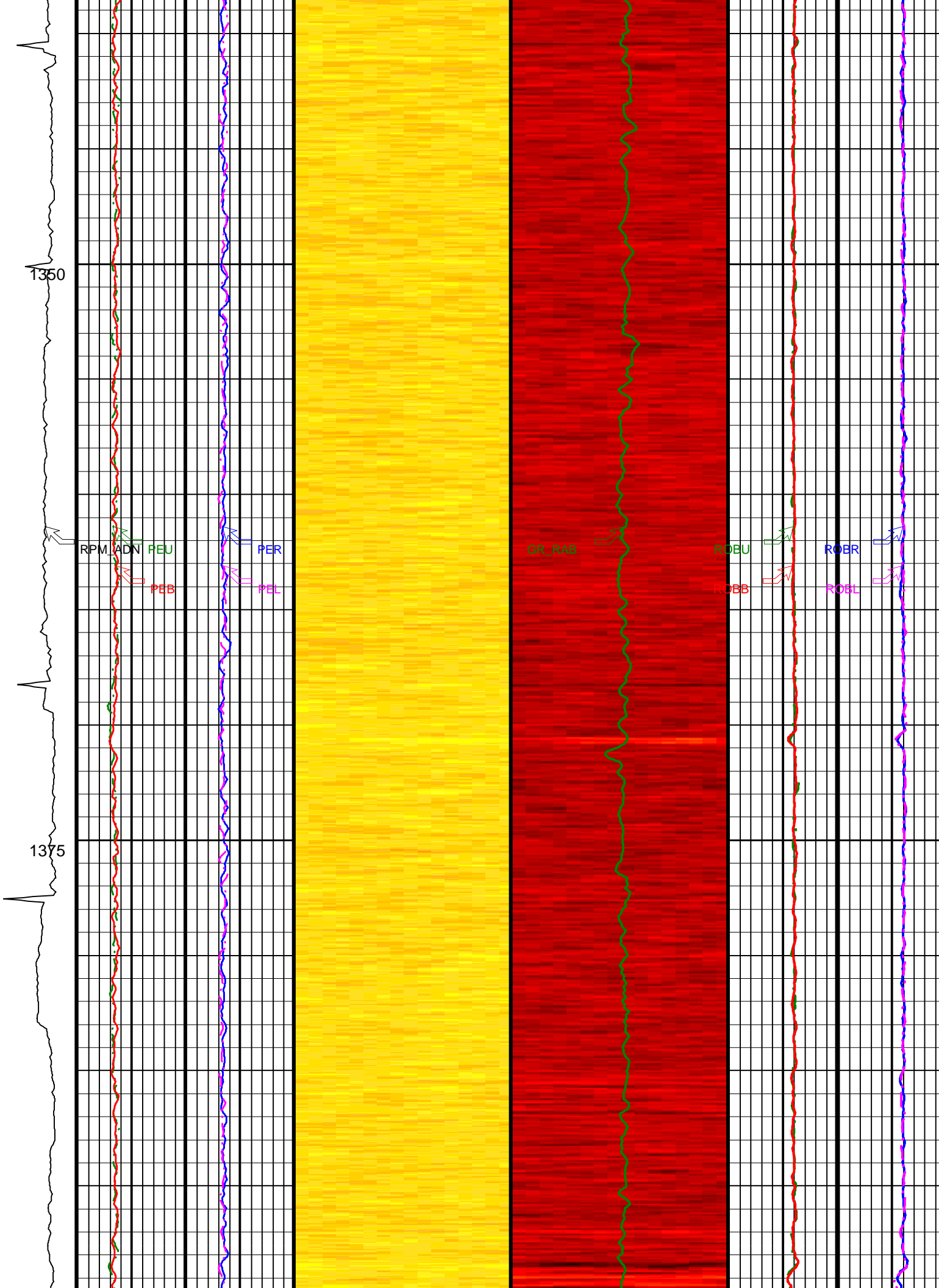
1300

1325

RPM ADN FEU
FEB
PER
FEL

GR RAB ROBU
ROBB
ROBR
ROEL



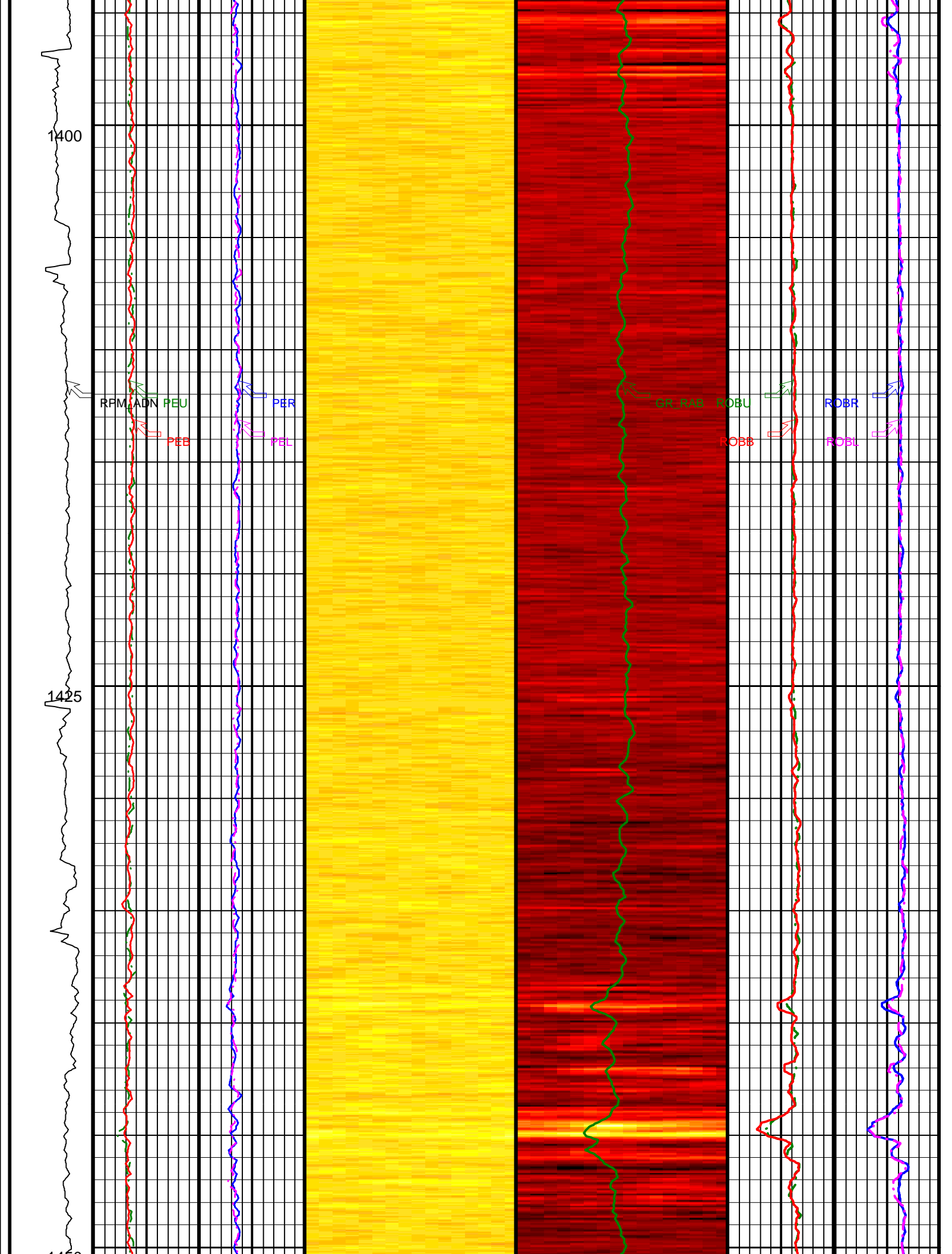


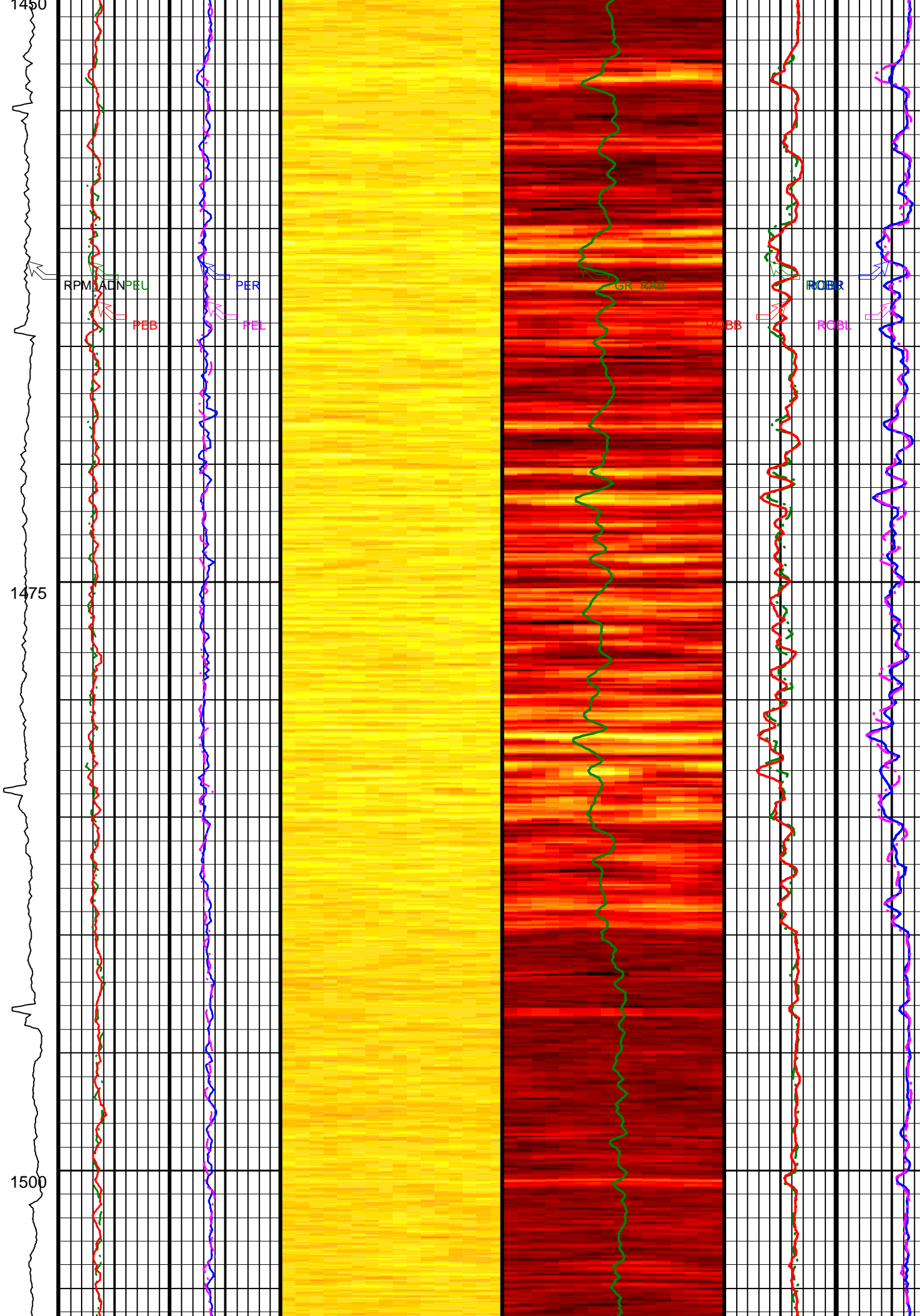
1400

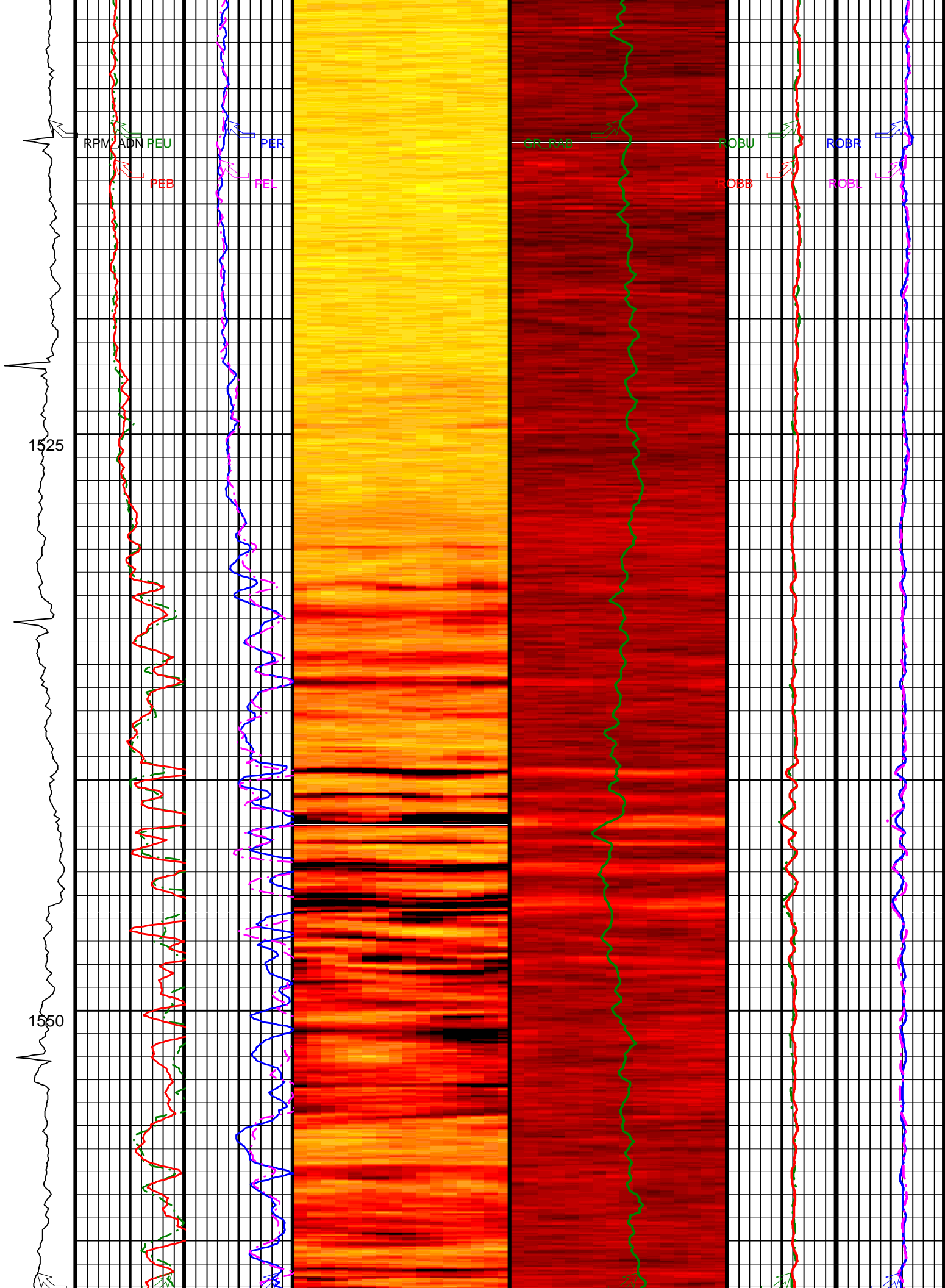
1425

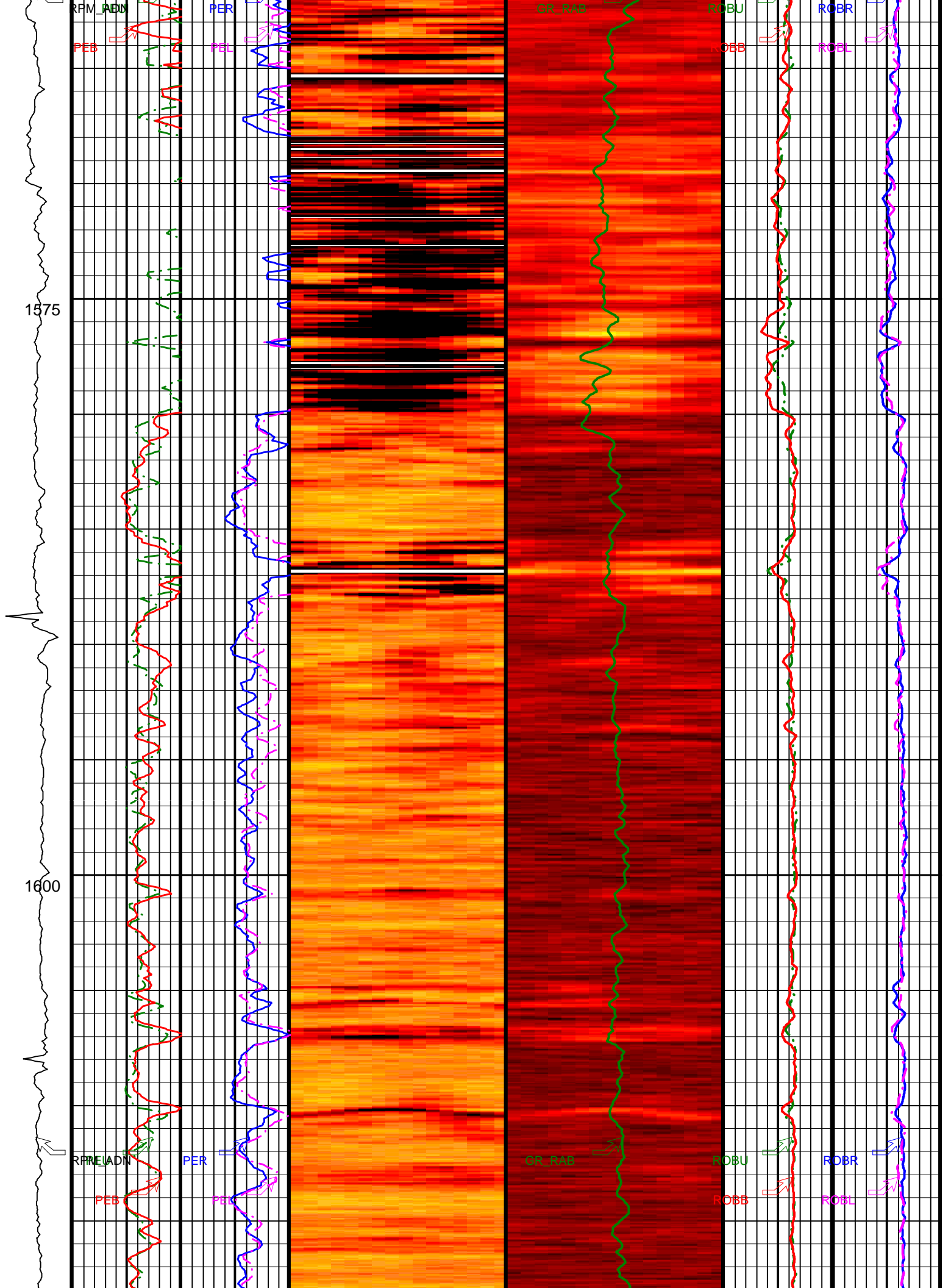
RPM ADN PEU
PEB PER
PEL

GR FAB ROBU
ROBB ROBR
ROBL







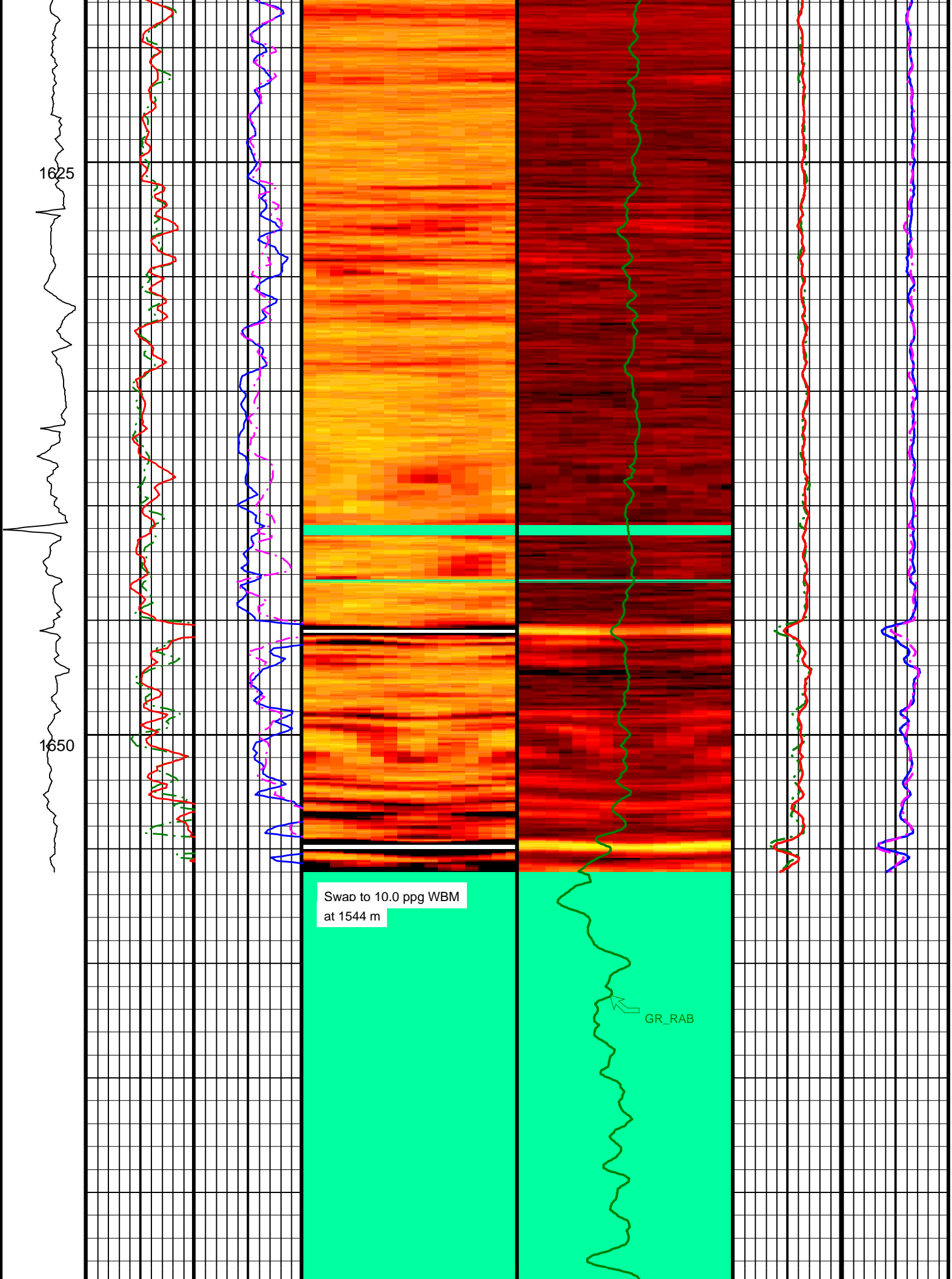


1625

1650

Swab to 10.0 ppg WBM
at 1544 m

GR_RAB



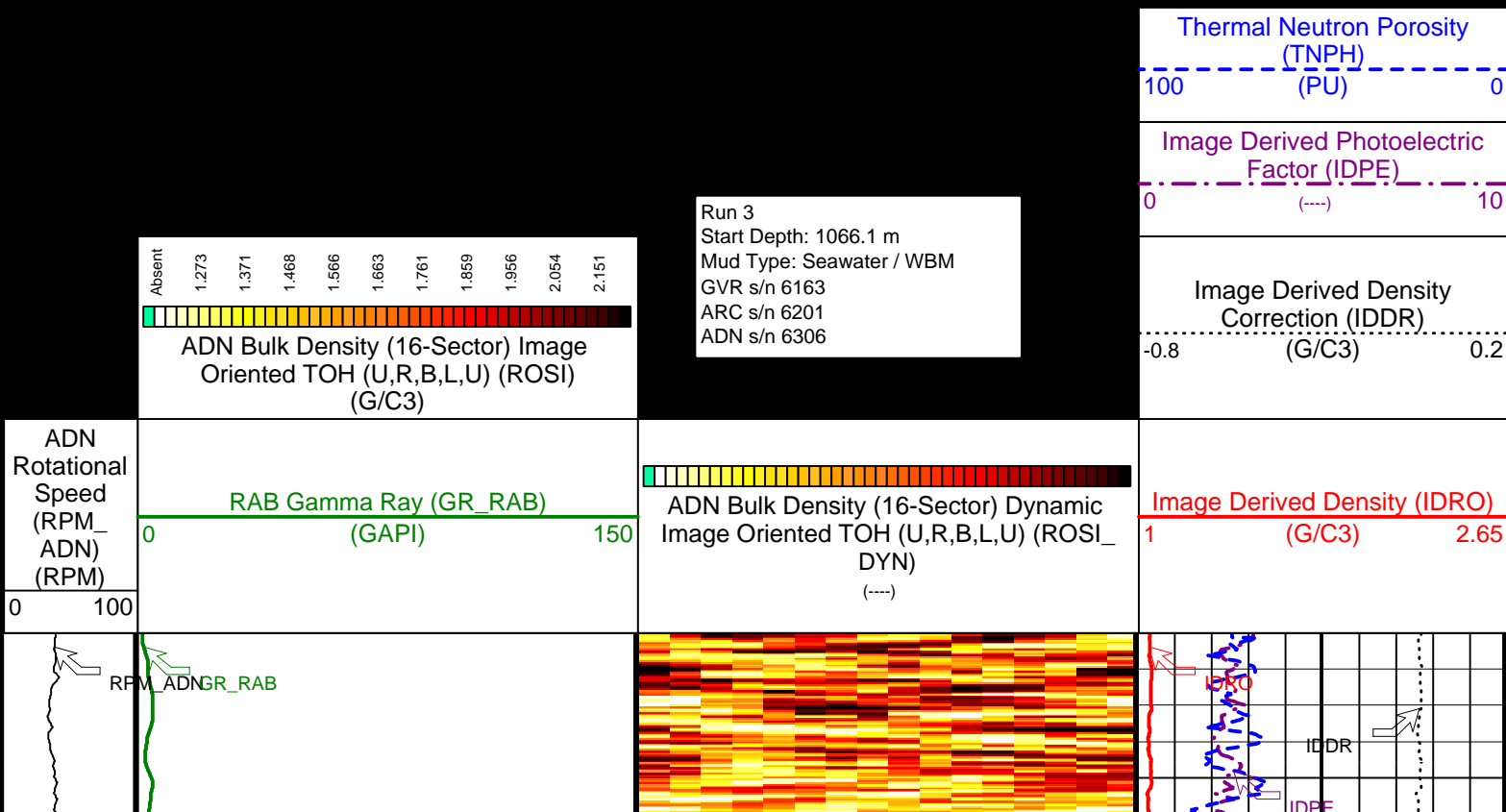
1675

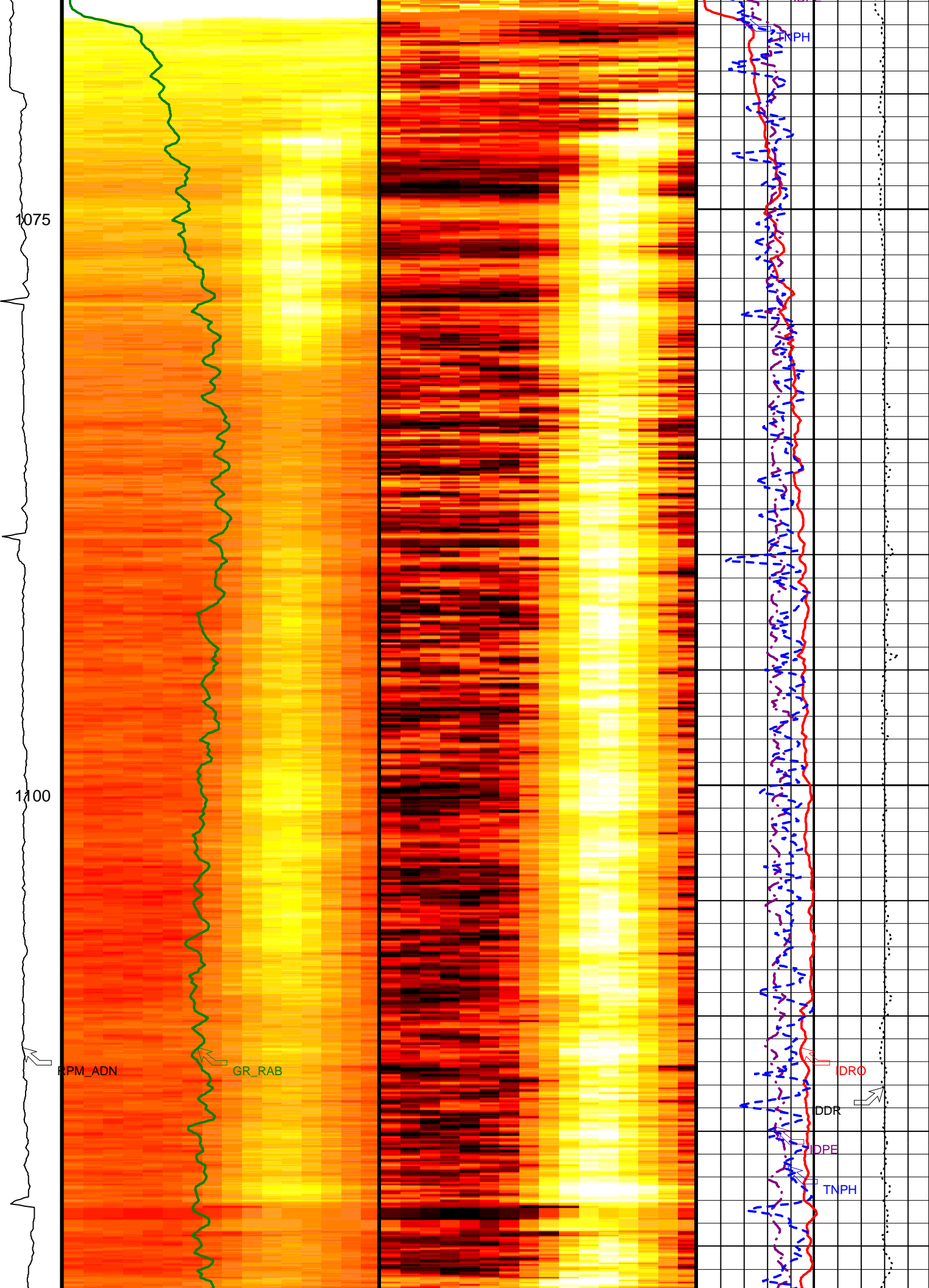
Total Depth 1678 m

ADN Rotational Speed (RPM_ ADN) (RPM)	Photoelectric Factor, Up (PEU)	Photoelectric Factor, Right (PER)	ADN Photoelectric Factor (16-Sector) Image Oriented Top of Hole (U,R,B,L,U) (PESI) (---)	RAB Gamma Ray (GR_RAB) (GAPI)	Bulk Density, Up (ROBU) (G/C3)	Bulk Density, Right (ROBR) (G/C3)
0 100	0 (---) 10	0 (---) 10	0 100	0 150	1 2.65	1 2.65
	Photoelectric Factor, Bottom (PEB)	Photoelectric Factor, Left (PEL)		ADN Bulk Density (16-Sector) Image Oriented Top of Hole (U,R,B,L,U) (ROSI) (G/C3)	Bulk Density, Bottom (ROBB) (G/C3)	Bulk Density, Left (ROBL) (G/C3)
	0 (---) 10	0 (---) 10		1 2.65	1 2.65	1 2.65

IDEAL Version: ID10_OC_04
IDF

PEF / Density Static Image





1125

1150

1175

RPM_ADN

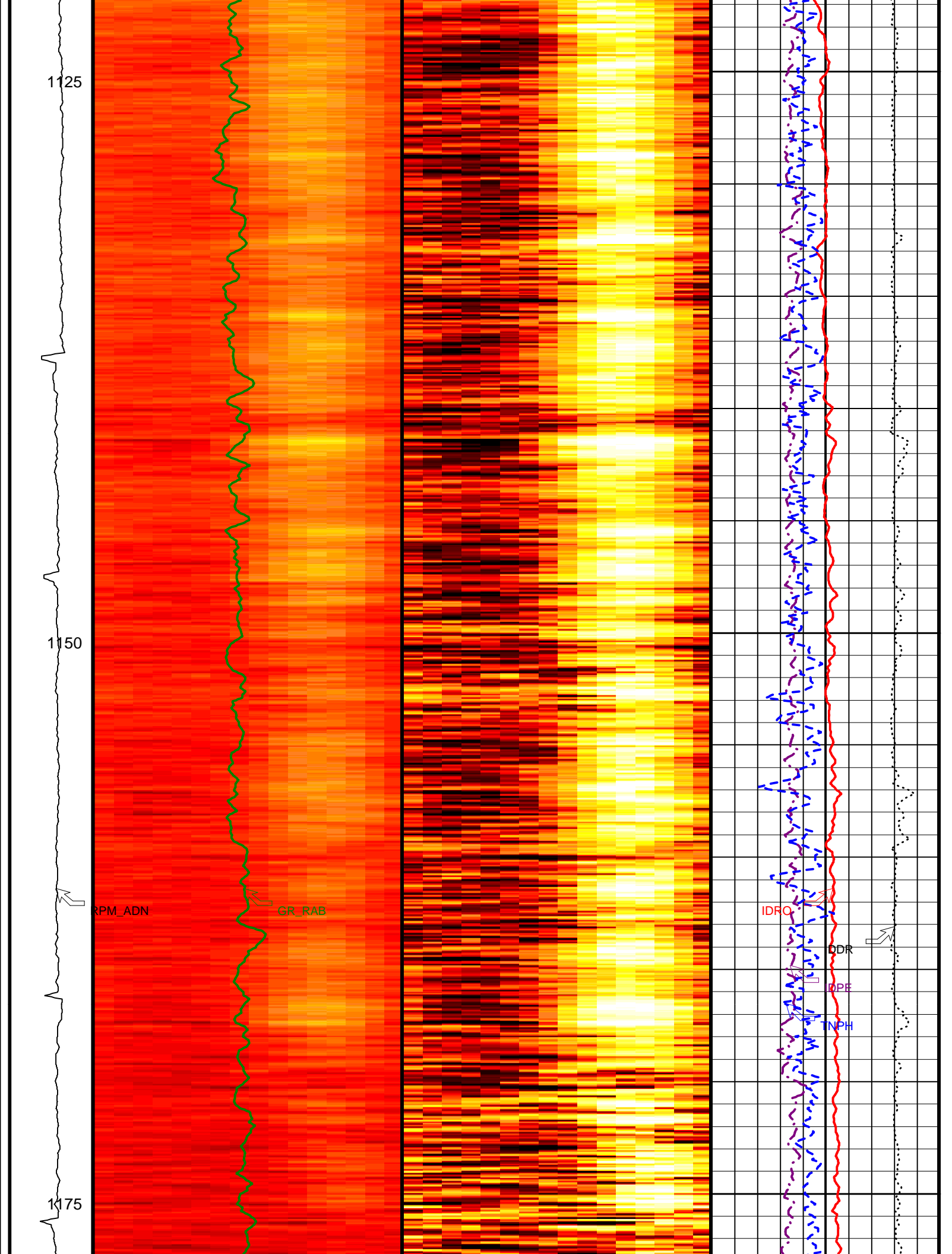
GR_RAB

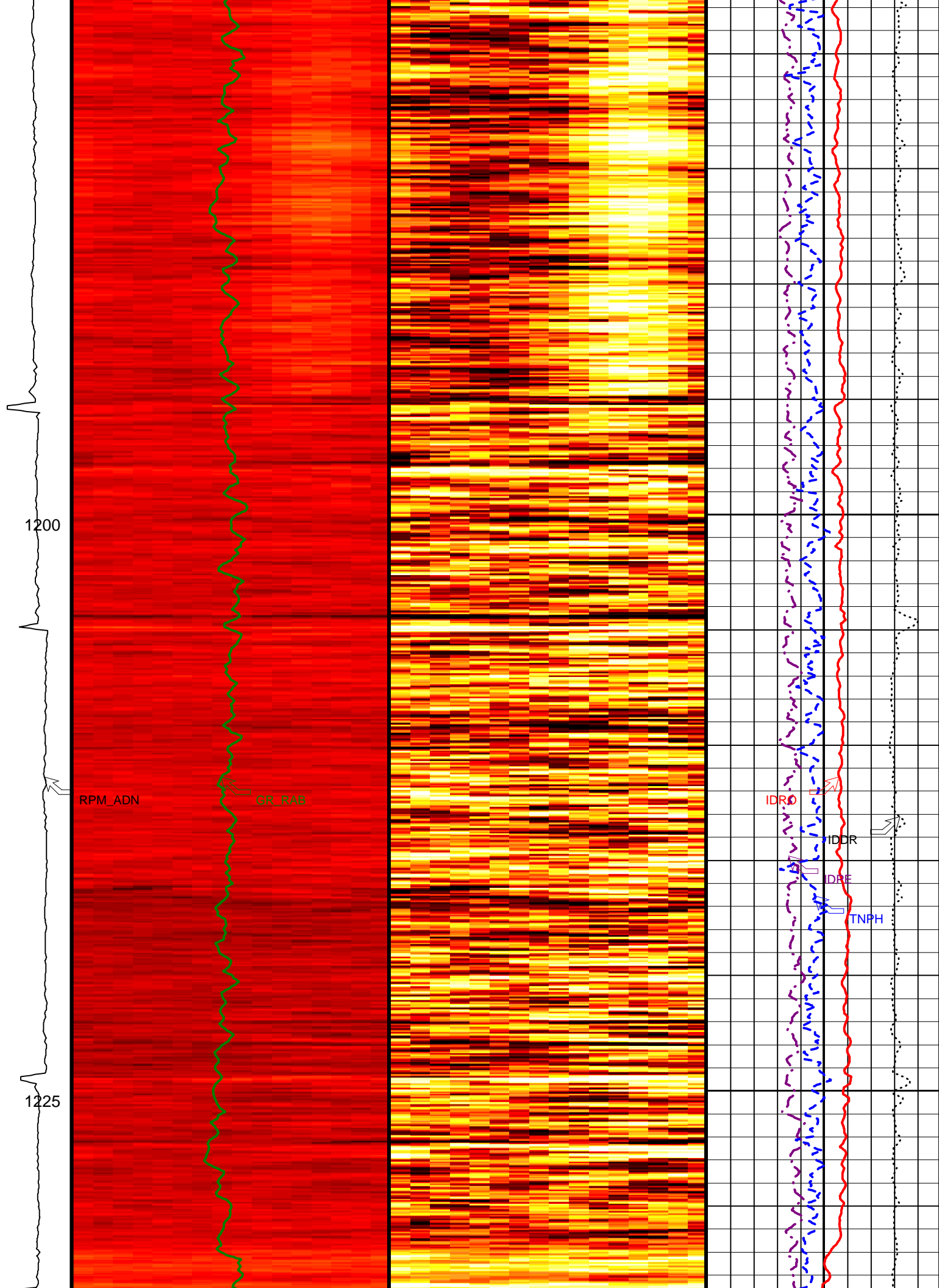
IDRO

DDR

DPE

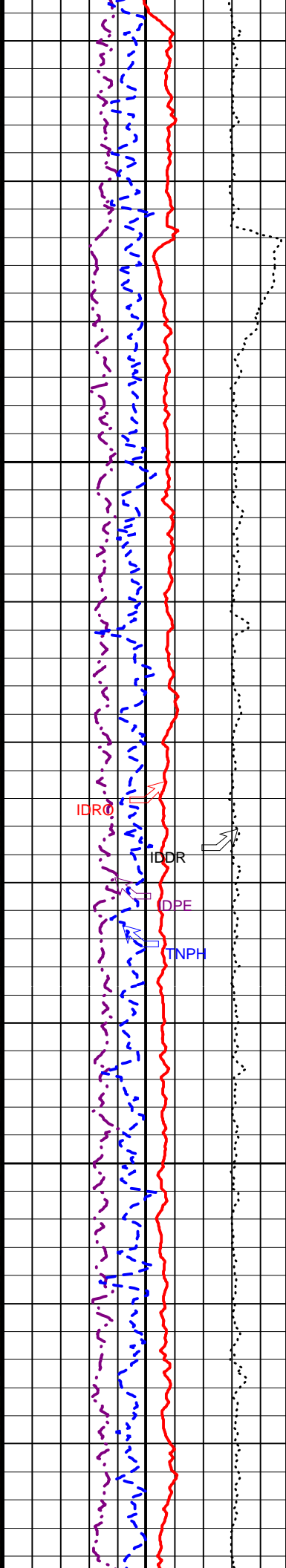
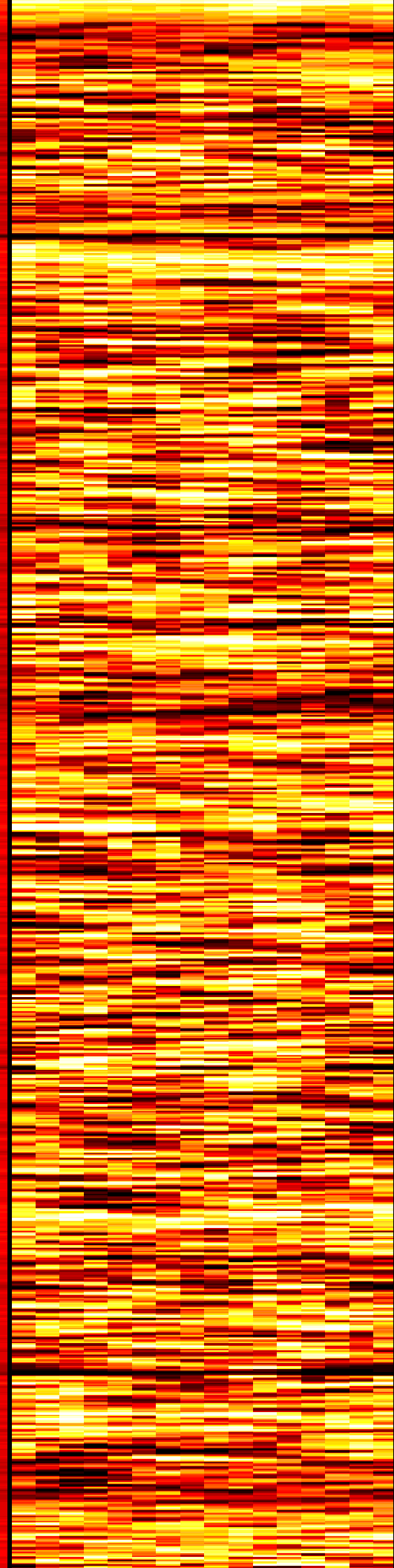
INPH







RPM_ADN GR_RAB

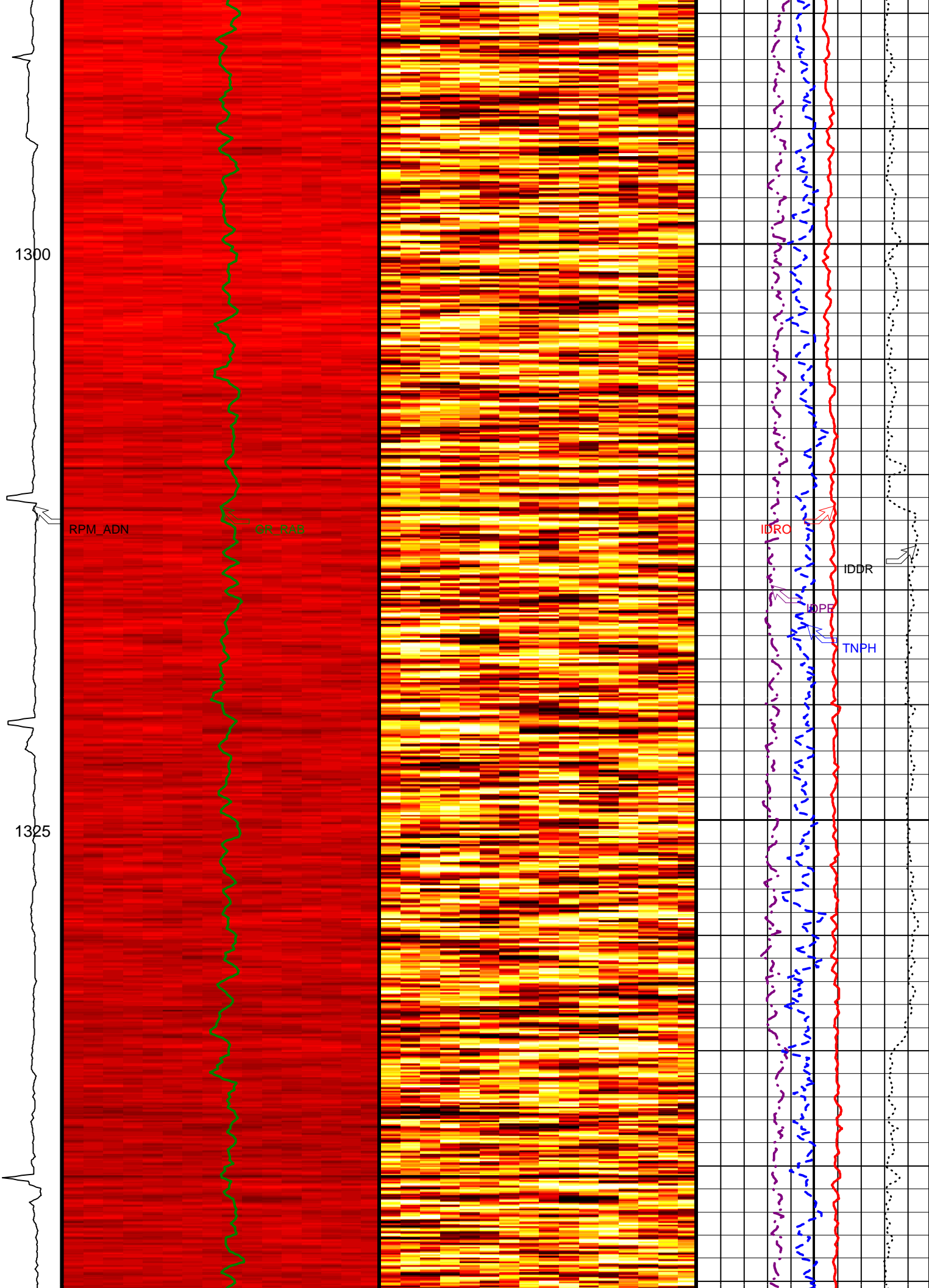


IDRC

IDDR

DPE

TNPH



1350

1375

1400

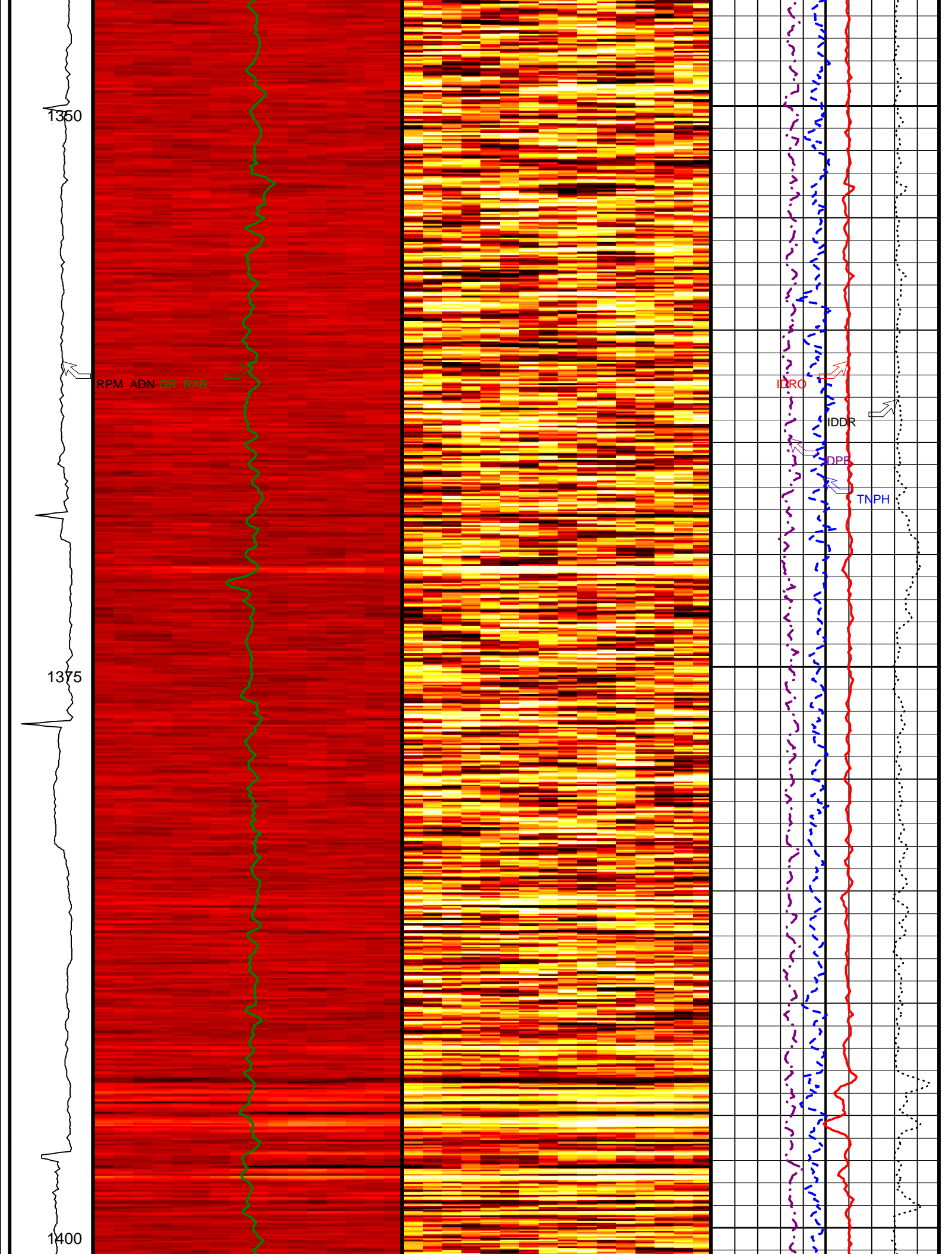
RPM_ADN GR_RAB

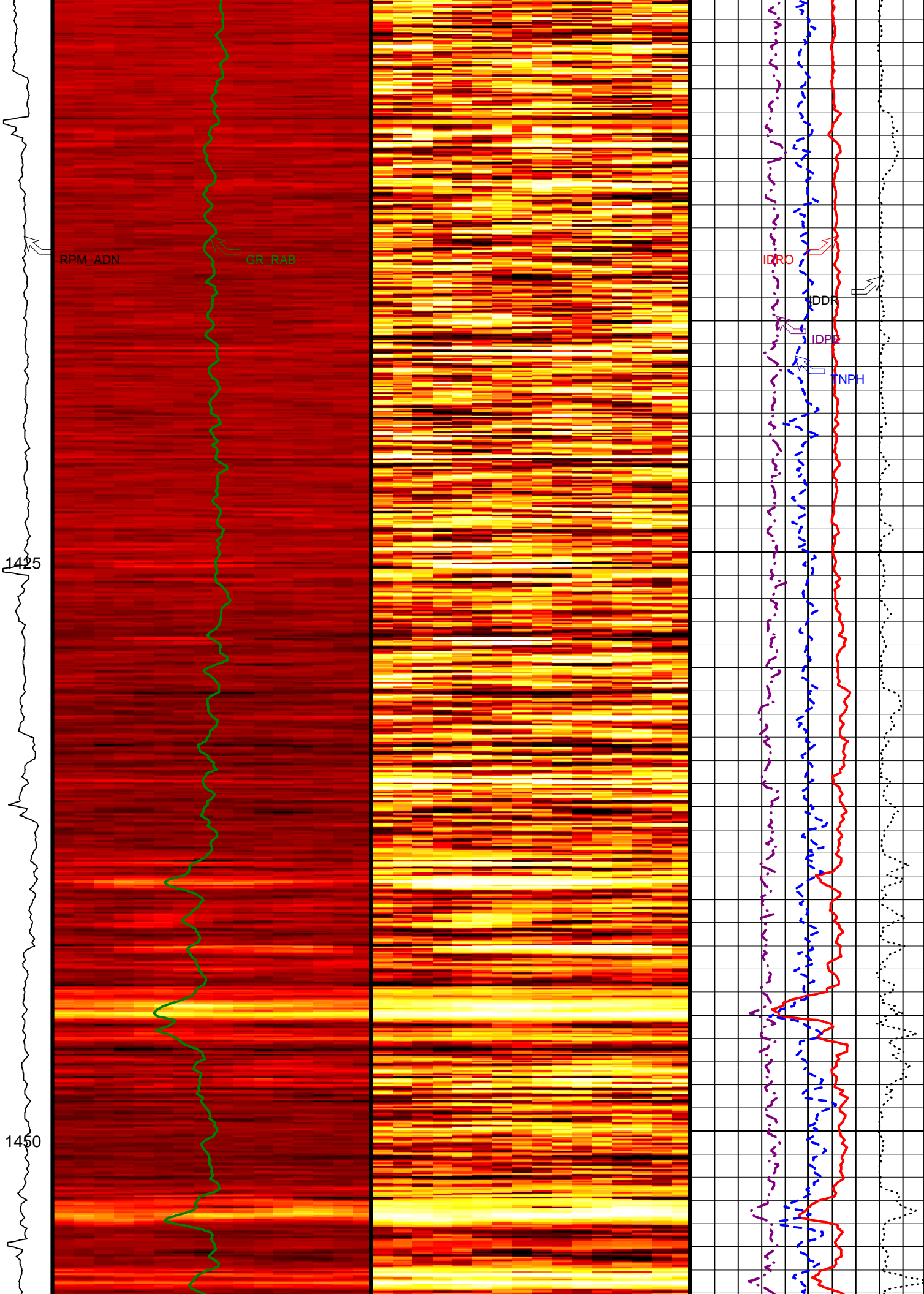
IDRO

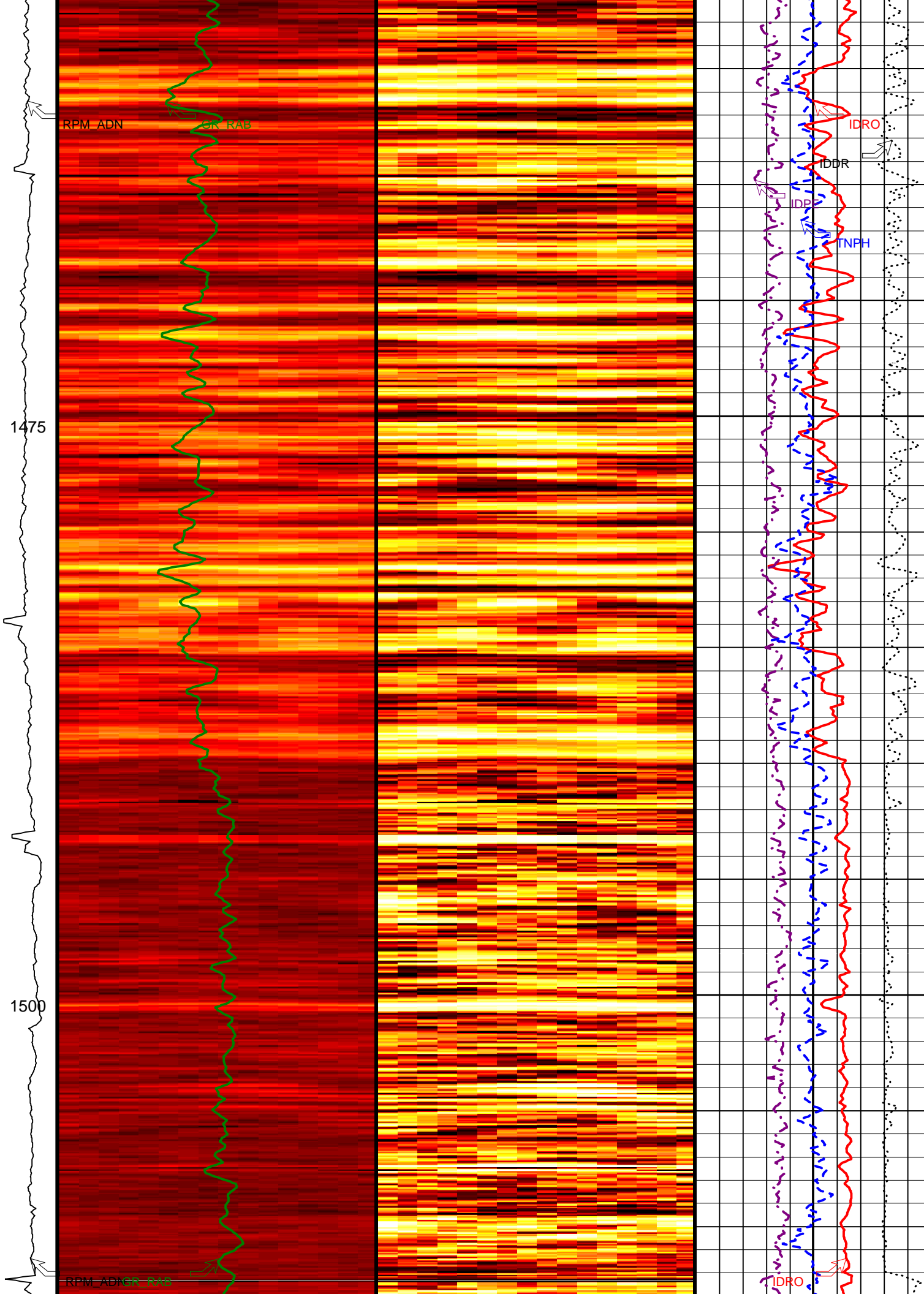
IDDR

DPE

TNPH







RPM_ADN

GR_RAB

IDRO

IDDR

IDP

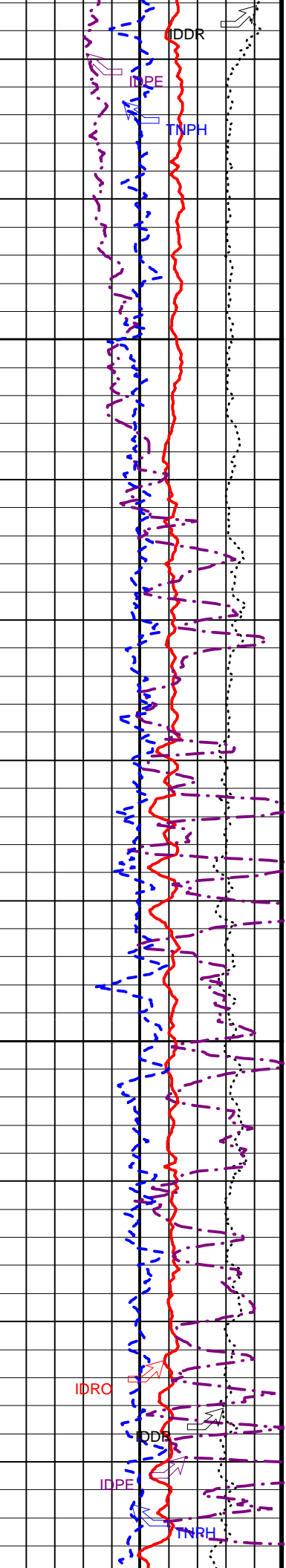
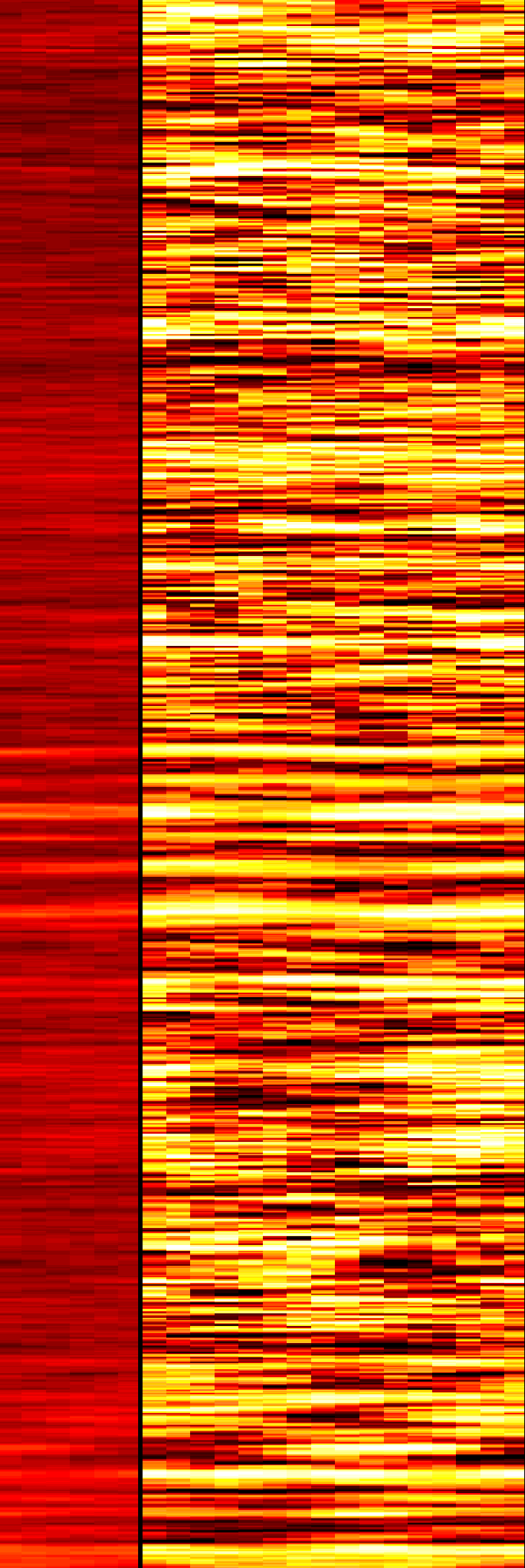
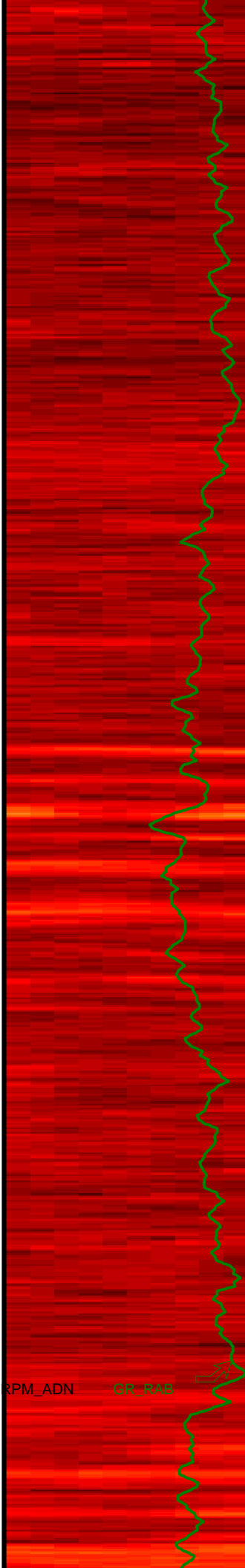
TNPH

1475

1500

RPM_ADN GR_RAB

IDRO



RPM_ADN GR_KAB

IDRO IDDR IDPE TNPH

1575

1600

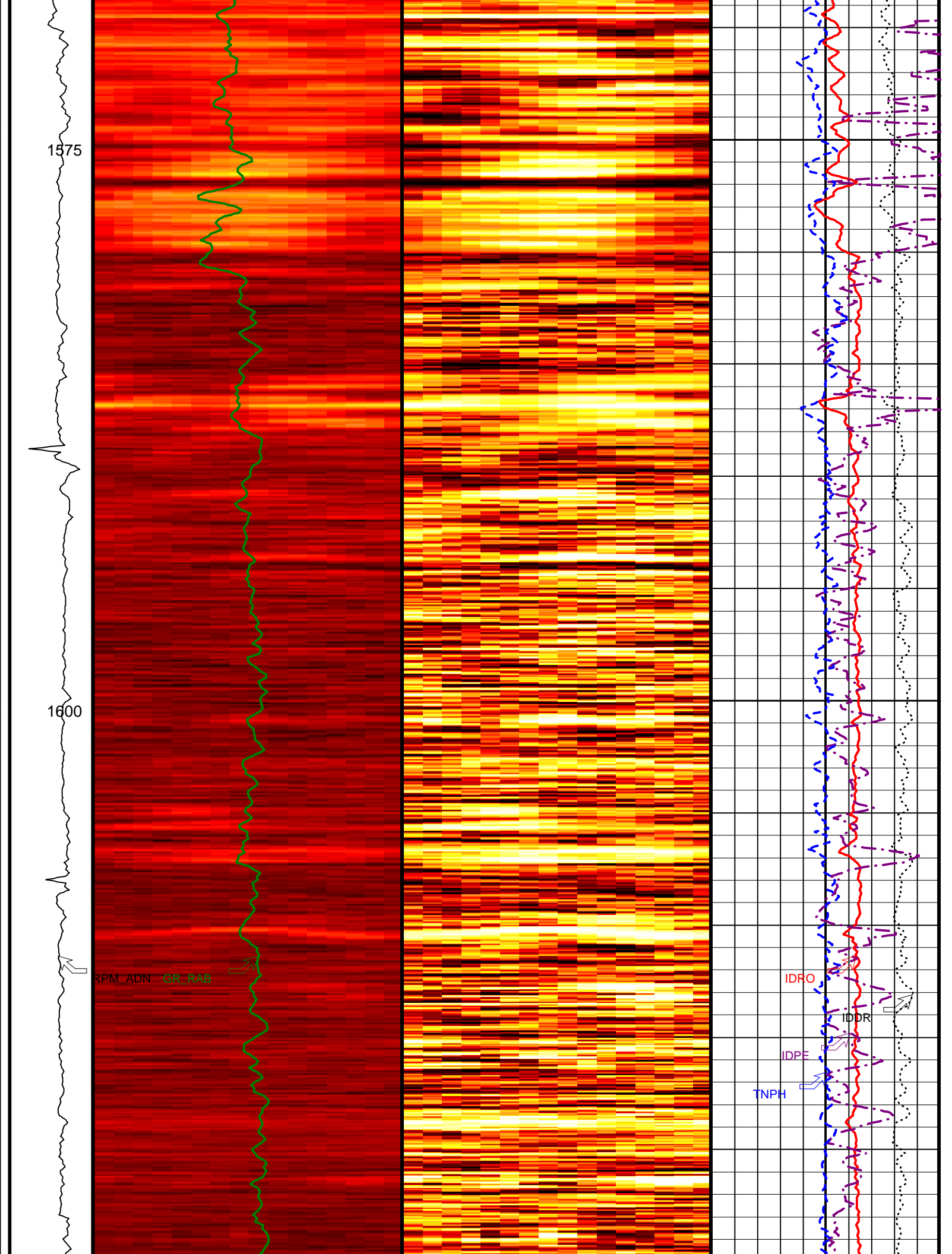
RPM ADN GR RAB

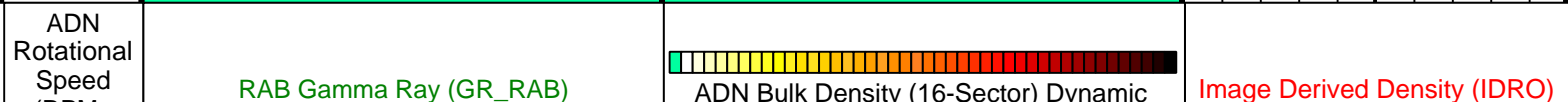
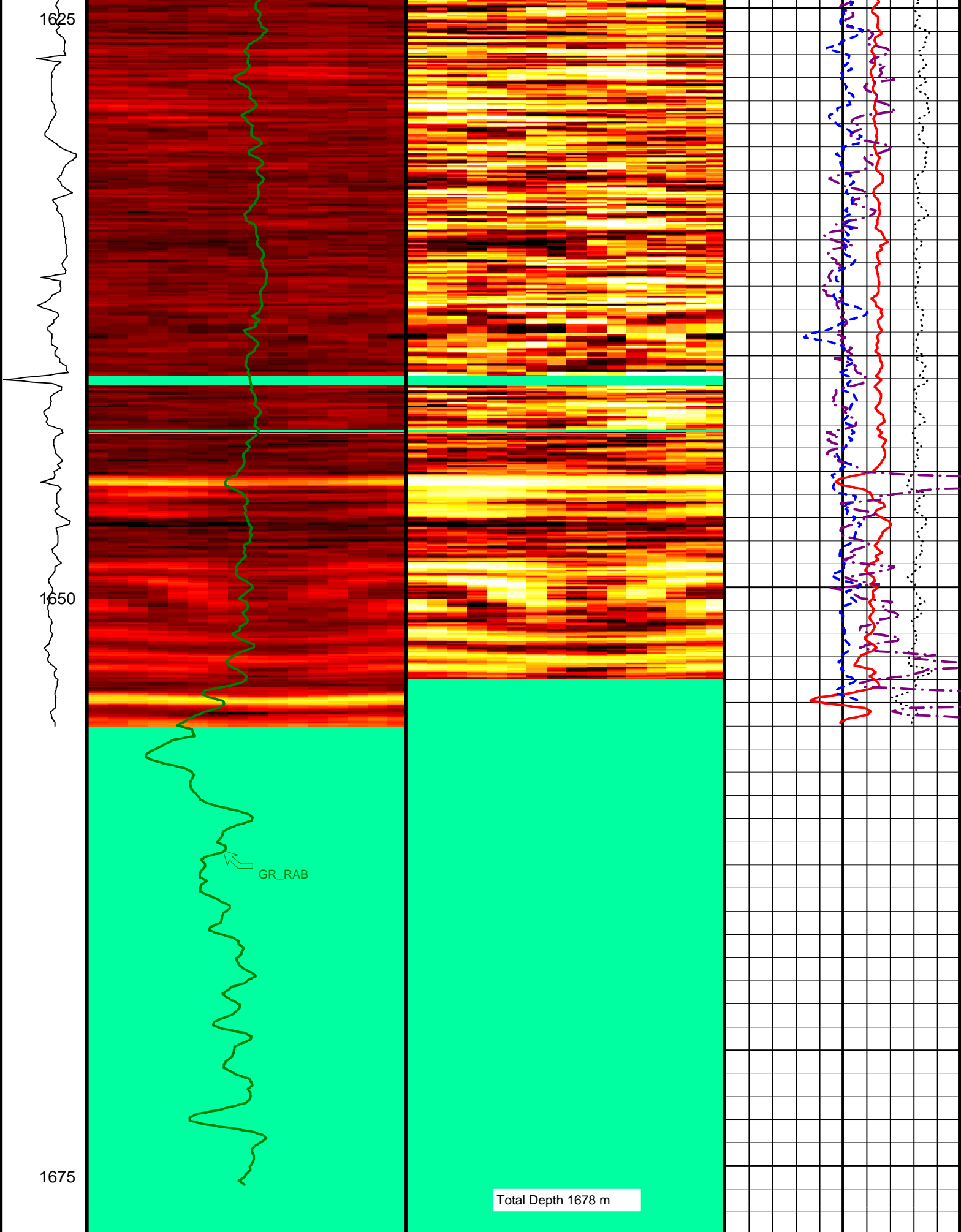
IDRO

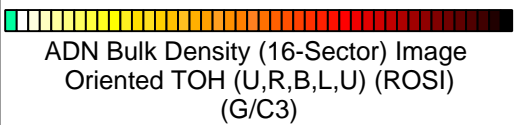
IDDR

IDPE

TNPH





(RPM_ ADN) (RPM)	0 (GAPI) 150	Image Oriented TOH (U,R,B,L,U) (ROSI_ DYN) (----)	1 (G/C3) 2.65
0 100			
Absent	1.273 1.371 1.468 1.566 1.663 1.761 1.859 1.956 2.054 2.151		
 <p>ADN Bulk Density (16-Sector) Image Oriented TOH (U,R,B,L,U) (ROSI) (G/C3)</p>			Image Derived Density Correction (IDDR) (G/C3) -0.8 0.2
			Image Derived Photoelectric Factor (IDPE) (----) 0 10
			Thermal Neutron Porosity (TNP) (PU) 100 0

IDEAL Version: ID10_0C_04
IDF

Company: Integrated Ocean Drilling Program

Schlumberger

Well: IODP Exp 308 Hole U1324A
Field: Mississippi Canyon Block 897
Rig: Joides Resolution
State: Louisiana

VISION Density Neutron - Image
1 : 200 Measured Depth
Recorded Mode Log