

Company: Integrated Ocean Drilling Program

Well: IODP Exp 308 Hole U1324A
 Field: Mississippi Canyon Block 897
 Rig: Joides Resolution State: Louisiana

Rig: Joides Resolution
 Field: Mississippi Canyon Block 897
 Location: Ursa Basin
 Well: IODP Exp 308 Hole U1324A
 Company: Integrated Ocean Drilling Program

PERFORM - APWD 2 in / hr Time Based Recorded Mode and Real-Time Log

Total depth: 1678 m
 Spud date: 17-Jun-2005
 Runs: 3 To 3
 Permanent datum: Mean Sea Level
 Log measured from: Drill Floor
 Depth reference: Driller's Depth
 Elevation: 10.6 m above Perm. datum

Service Order no. NAD 27
 40012055 UTM Zone 15N
 Longitude W89.13931
 Latitude N28.07974
 Other services:

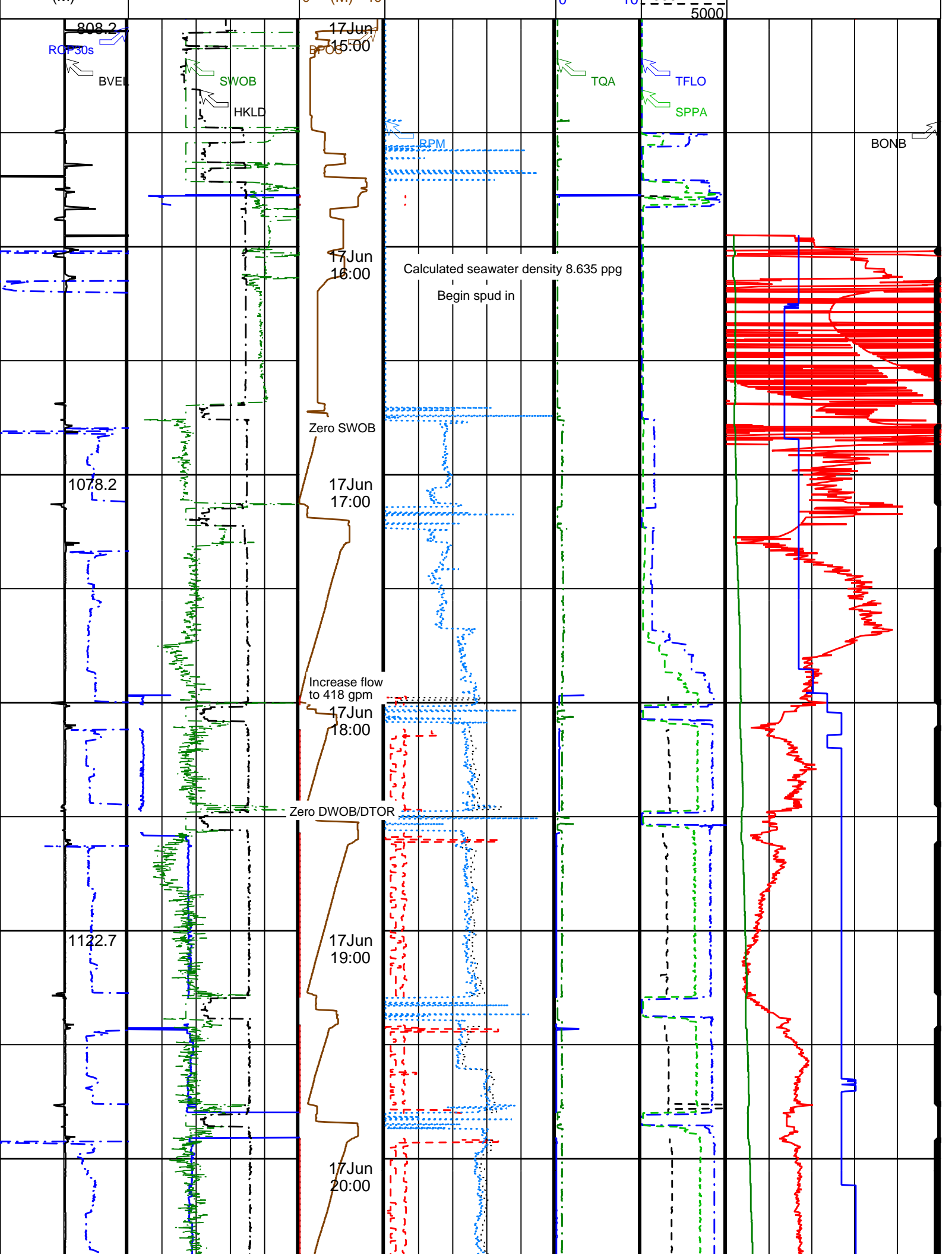
Depth logged: 1066.1 m To 1678 m
 Date logged: 17-Jun-05 To 19-Jun-05
 Mag decl: 0.21 deg.
 Mag dip: 58.28 deg.

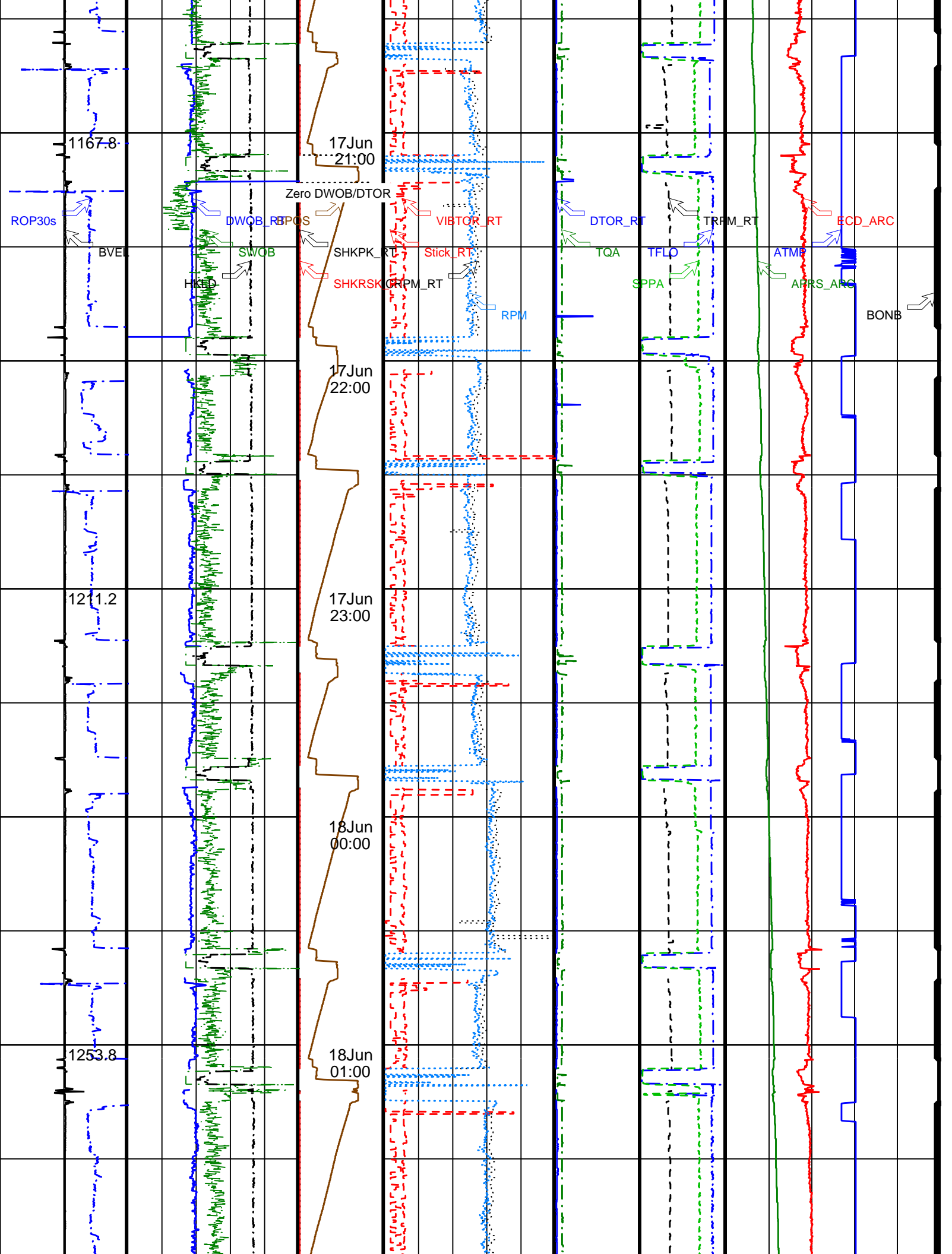
Bore hole record		Casing record				
Hole size	from	to	Size	Density	from	to
9.875 in.	1066.1 m	1678 m				
Mud record						
Type	from	to	Min	Max	from	to
Seawater	1066.1 m	1544 m	0.18 deg.	5.47 deg.	1066.1 m	1678 m
WBM	1544 m	1678 m				
Surface equipment						
Unit	TWIS	IDEAL Wis	10_OC_04.1	Software record		
Depth system	Geograph	SPM	10_1C_05	See Remarks		
		LWD				
		MWD	8.0c00			

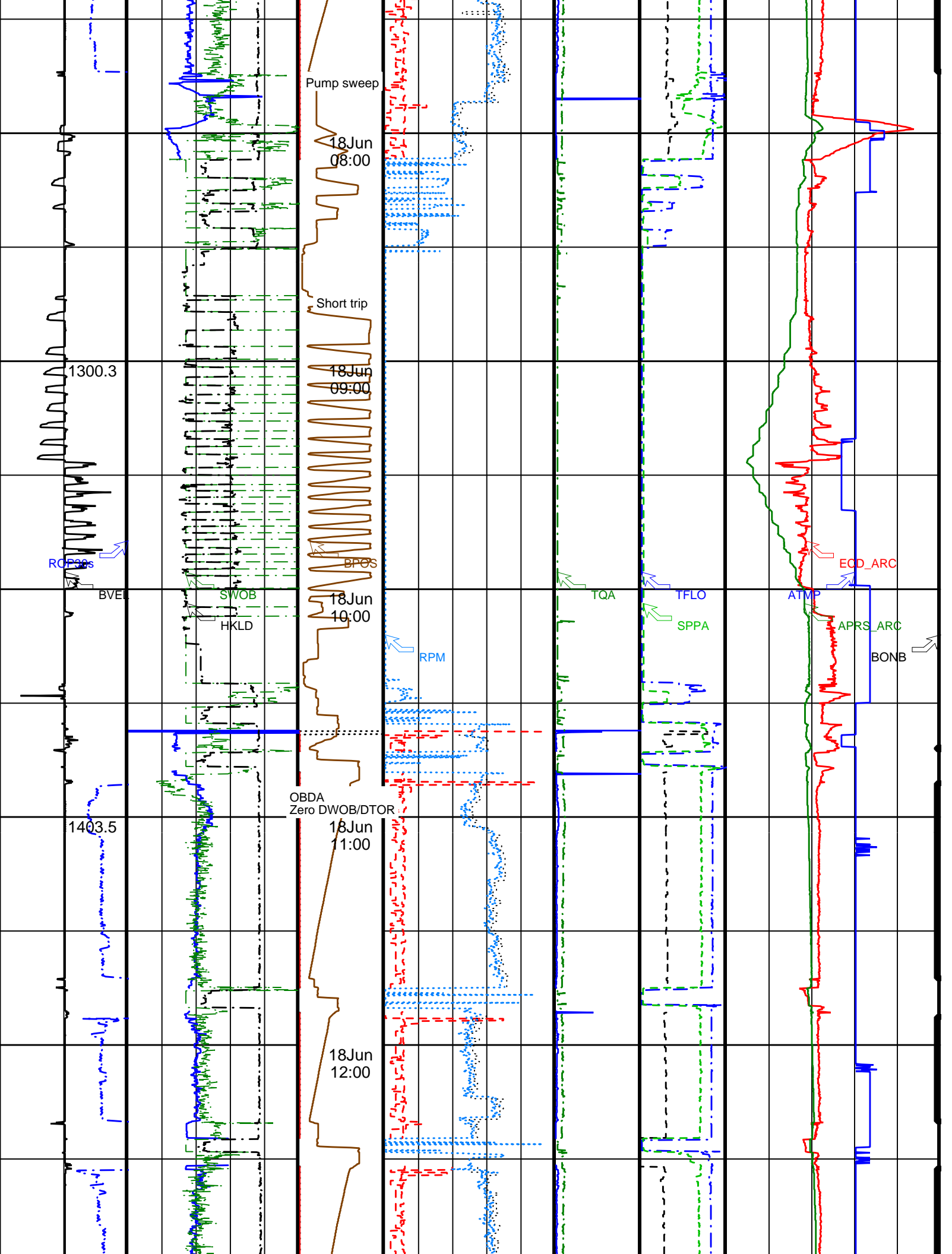
PERFORM - APWD U1324A

IDEAL Version: ID10_OC_04.1 < > Vertical Scale: 2" per 3600S Graphics File Created: 01-Jul-2005 16:04

Surface rpm (RPM)		Bit on bottom (BONB)	
0	100	-9	0.2
Block_velocity (BVEL) (M/S)	Hookload (HKLD) (KLBF)	MWD Shock Risk (SHKRSK_RT)	MWD Collar RPM (CRPM_RT)
-1 to 1	0 to 400	0 to 4	0 to 100
ROP30sec (ROP30s) (M/HR)	Dwob (DWOB_RT) (KLBF)	Shock Peak (SHKPK_RT)	MWD PEAK TO PEAK RPM (Stick_RT)
100 to 0	-10 to 20	0 to 20	0 to 100
Bit Depth Value (DEPT) (M)	Surface WOB (SWOB) (KLBF)	Block Position (BPOS) (M)	Torsional Vib (VIBTOR_RT)
-10 to 20	0 to 20	0 to 40	0 to 2000
			Dtor (DTOR_RT) (KFLB)
			0 to 10
			Trpm (TRPM_RT) (RPM)
			1000
			Equivalent Circulating Density (ECD_ARC) (LB/G)
			7 to 12
			Annulus Pressure (APRS_ARC) (PSI)
			1500 to 3000
			Annulus Temperature (ATMP) (DEGC)
			0 to 15
			Stand_pipe_pressure (SPPA) (PSI)
			0 to 1200
			Total_pump_flow (TFLO) (GPM)
			0 to 500
			Surface_torque (TQA) (KFLB)
			0 to 10







Pump sweep

18Jun
08:00

Short trip

18Jun
09:00

18Jun
10:00

OBDA
Zero DWOB/DTOR

18Jun
11:00

18Jun
12:00

1300.3

1403.5

RPOS

BVEI

SWOB

HKLD

BPOS

RPM

TQA

TFLO

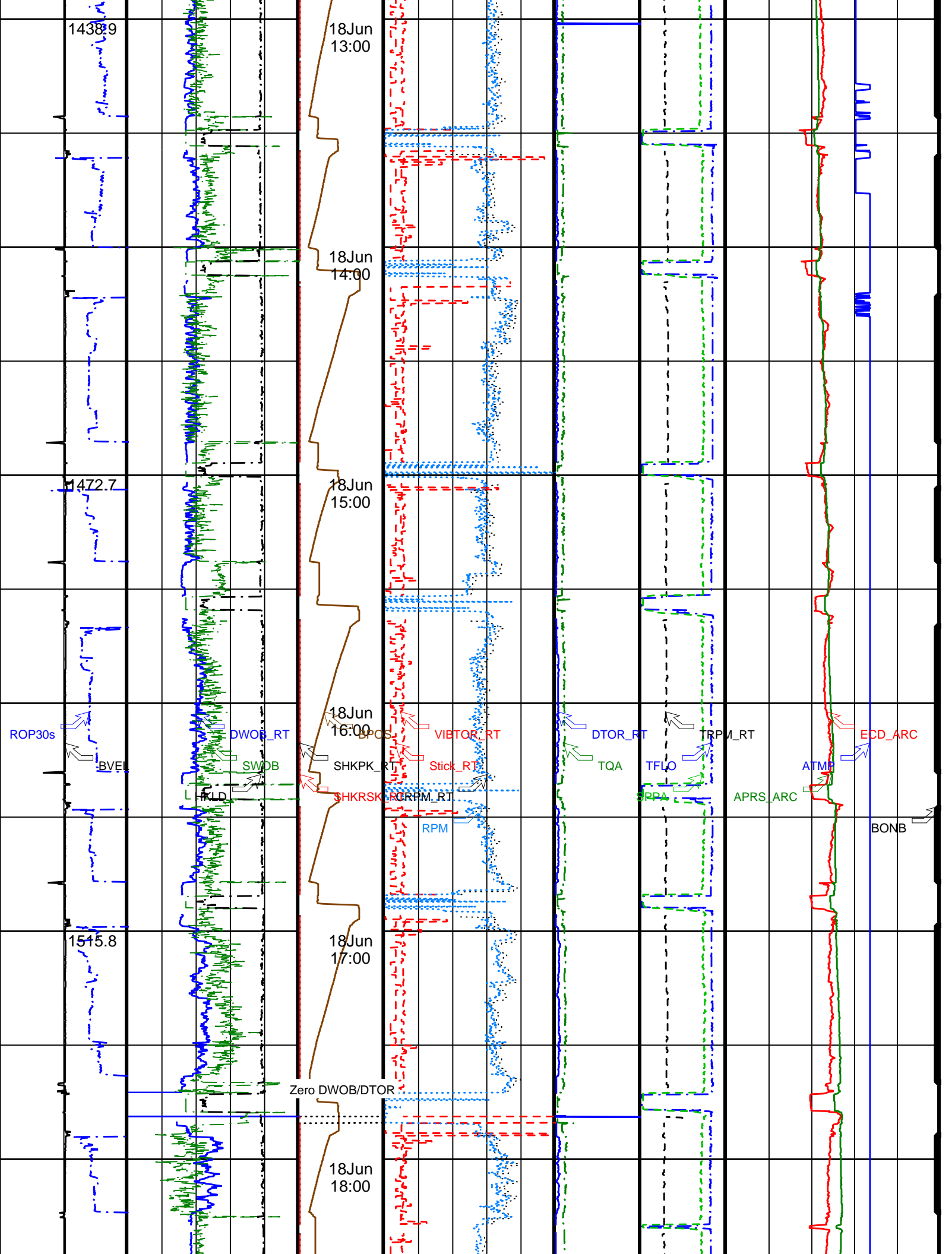
SPPA

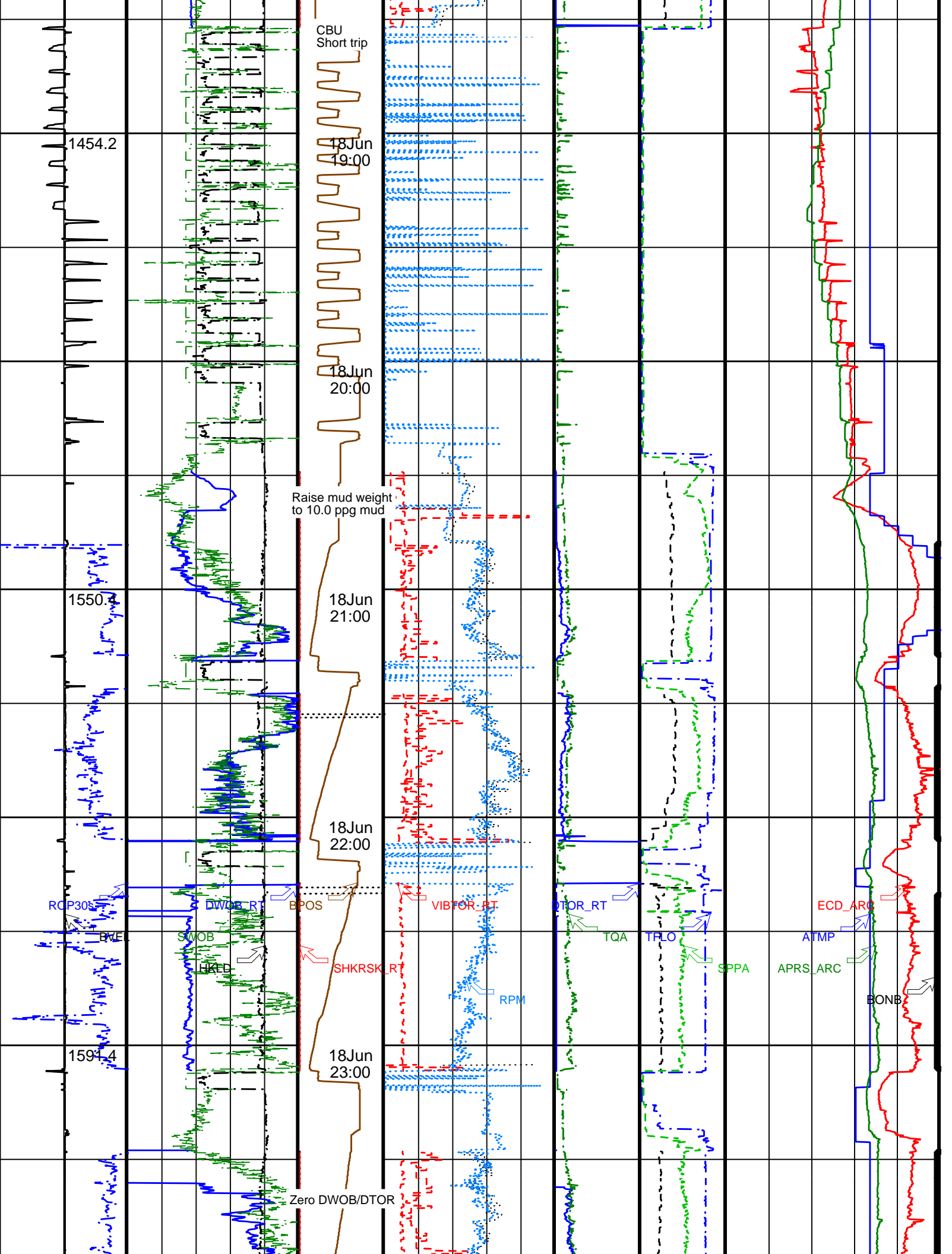
ATMP

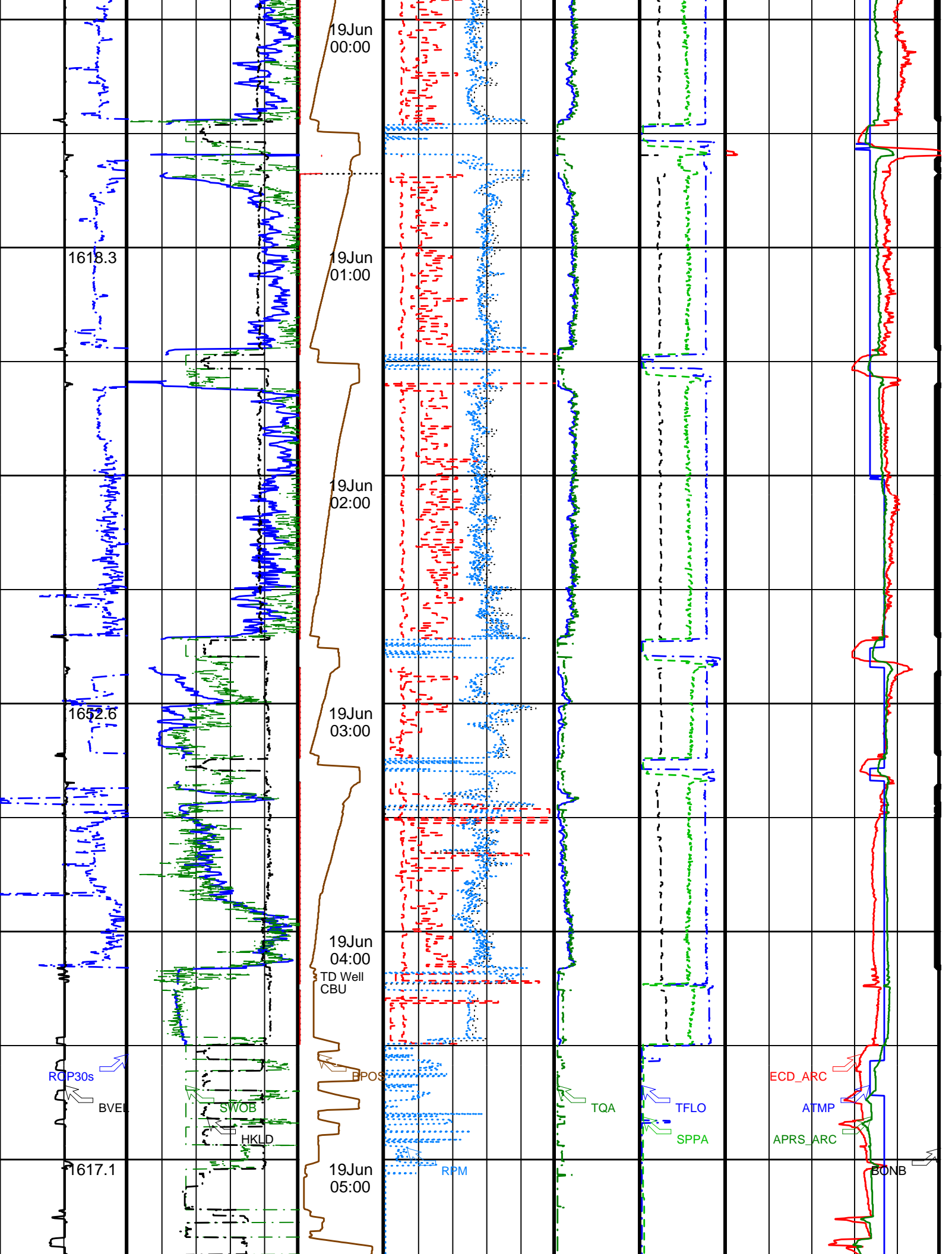
ECD_ARC

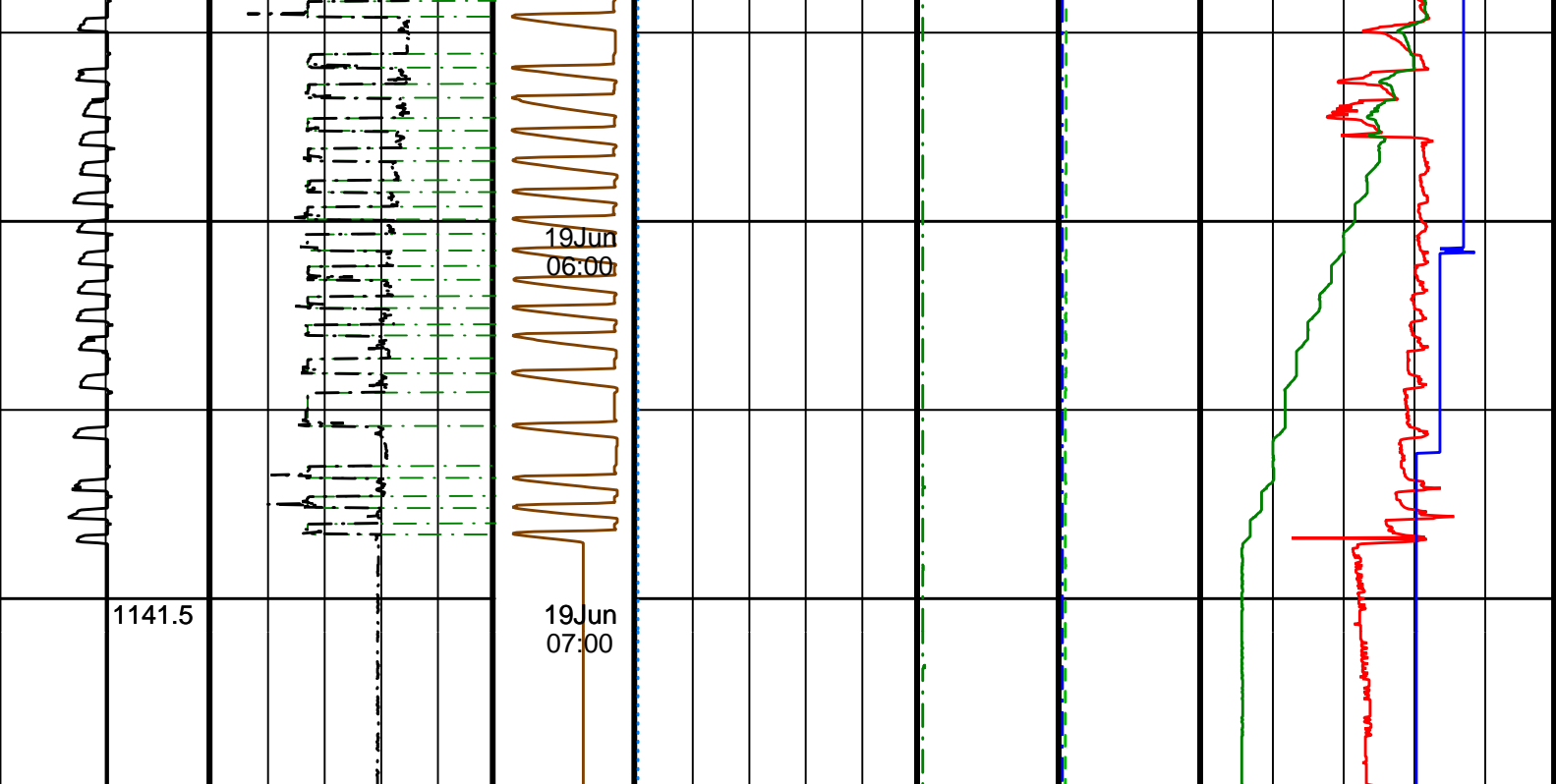
APRS_ARC

BONB









Bit Depth Value (DEPT) (M)	Surface WOB (SWOB) (KLBF)	Block Position (BPOS) (M)	Torsional Vib (VIBTOR_RT) (RPM)	Dtor (DTOR_RT) (KFLB)	Trpm (TRPM_RT) (RPM)	Equivalent Circulating Density (ECD_ARC) (LB/G)
1141.5						
ROP30sec (ROP30s) (M/HR)	Dwob (DWOB_RT) (KLBF)	Shock Peak (SHKPK_RT) (RPM)	MWD PEAK TO PEAK RPM (Stick_RT) (RPM)	Surface torque (TQA) (KFLB)	Total pump flow (TFLO) (GPM)	Annulus Temperature (ATMP) (DEGC)
Block_velocity (BVEL) (M/S)	Hookload (HKLD) (KLBF)	MWD Shock Risk (SHKRSK_RT) (RPM)	MWD Collar RPM (CRPM_RT) (RPM)	Stand pipe pressure (SPPA) (PSI)	Annulus Pressure (APRS_ARC) (PSI)	Bit_on_bottom (BONB) (RPM)
			Surface rpm (RPM)			

Company: Integrated Ocean Drilling Program



Well: IODP Exp 308 Hole U1324A
 Field: Mississippi Canyon Block 897
 Rig: Joides Resolution
 State: Louisiana

PERFORM - APWD
 2 in / hr Time Based
 Recorded Mode and Real-Time Log

