

**Company:** Lamont Doherty

**Well:** IODP EXP 308 Site U1324A

**Field:** URSA Basin

**Country:** USA **Ocean:** Gulf Of Mexico

**DSI-GR**

|                         |  |                   |     |                                  |                          |                                |                    |                         |  |  |
|-------------------------|--|-------------------|-----|----------------------------------|--------------------------|--------------------------------|--------------------|-------------------------|--|--|
| Country: USA            |  | Field: URSA Basin |     | Location: Rig- Joides Resolution |                          | Well: IODP EXP 308 Site U1324A |                    | Company: Lamont Doherty |  |  |
| <b>LOCATION</b>         |  |                   |     |                                  | Rig- Joides Resolution   |                                | Elev.: K.B. 10.6 m |                         |  |  |
|                         |  |                   |     |                                  |                          |                                | G.L. 1056 m        |                         |  |  |
|                         |  |                   |     |                                  |                          |                                | D.F. 10.3 m        |                         |  |  |
| Permanent Datum:        |  |                   | MSL |                                  | Elev.: 0 m               |                                |                    |                         |  |  |
| Log Measured From:      |  |                   | DES |                                  | 10.6 m above Perm. Datum |                                |                    |                         |  |  |
| Drilling Measured From: |  |                   | DES |                                  |                          |                                |                    |                         |  |  |
| API Serial No.          |  |                   |     | Max. Hole Devi.                  |                          | Longitude W 89 08.3554         |                    | Latitude N 28 04.7962   |  |  |

|                               |   |                             |                   |            |  |      |  |  |  |
|-------------------------------|---|-----------------------------|-------------------|------------|--|------|--|--|--|
| Logging Date                  |   |                             |                   |            |  |      |  |  |  |
| Run Number                    | 1 | Depth Driller               | 1678 m            |            |  |      |  |  |  |
|                               |   | Schlumberger Depth          | 1574 m            |            |  |      |  |  |  |
|                               |   | Bottom Log Interval         | 1573 m            |            |  |      |  |  |  |
|                               |   | Top Log Interval            | 1057 m            |            |  |      |  |  |  |
|                               |   | Casing Driller Size @ Depth | 0.000 in @ 1115 m |            |  |      |  |  |  |
|                               |   | Casing Schlumberger         | 1111 m            |            |  |      |  |  |  |
|                               |   | Bit Size                    | 9.875 in          |            |  |      |  |  |  |
| Type Fluid In Hole            |   | Septolite                   |                   |            |  |      |  |  |  |
| Density                       |   | Viscosity                   |                   | 1.2 g/cm3  |  |      |  |  |  |
| Fluid Loss                    |   | PH                          |                   | 0 cm3      |  |      |  |  |  |
| Source Of Sample              |   |                             |                   |            |  |      |  |  |  |
| RM @ Measured Temperature     |   | 0.196 ohm.m @               |                   | 23 degC    |  |      |  |  |  |
| RMF @ Measured Temperature    |   | 0.172 ohm.m @               |                   |            |  |      |  |  |  |
| RMC @ Measured Temperature    |   | 0.294 ohm.m @               |                   |            |  |      |  |  |  |
| Source RMF                    |   | RMC                         |                   |            |  |      |  |  |  |
| RM @ MRT                      |   | RMF @ MRT                   |                   | 0.220 @ 18 |  | @ 18 |  |  |  |
| Maximum Recorded Temperatures |   | 18 degC                     |                   | 110        |  |      |  |  |  |
| Circulation Stopped           |   | 6/19/05                     |                   | 1800       |  |      |  |  |  |
| Logger On Bottom              |   | 6/20/05                     |                   | See Log    |  |      |  |  |  |
| Unit Number                   |   | 99                          |                   | Houston    |  |      |  |  |  |
| Recorded By                   |   | Steve Kittredge             |                   |            |  |      |  |  |  |
| Witnessed By                  |   | Gerry Iturrino              |                   |            |  |      |  |  |  |

|                               |  |                             |  |  |  |  |  |  |  |       |       |     |
|-------------------------------|--|-----------------------------|--|--|--|--|--|--|--|-------|-------|-----|
| Logging Date                  |  |                             |  |  |  |  |  |  |  |       |       |     |
| Run Number                    |  | Depth Driller               |  |  |  |  |  |  |  | Run 1 | Run 2 | Run |
|                               |  | Schlumberger Depth          |  |  |  |  |  |  |  |       |       |     |
|                               |  | Bottom Log Interval         |  |  |  |  |  |  |  |       |       |     |
|                               |  | Top Log Interval            |  |  |  |  |  |  |  |       |       |     |
|                               |  | Casing Driller Size @ Depth |  |  |  |  |  |  |  |       |       |     |
|                               |  | Casing Schlumberger         |  |  |  |  |  |  |  |       |       |     |
|                               |  | Bit Size                    |  |  |  |  |  |  |  |       |       |     |
| Type Fluid In Hole            |  |                             |  |  |  |  |  |  |  |       |       |     |
| Density                       |  | Viscosity                   |  |  |  |  |  |  |  |       |       |     |
| Fluid Loss                    |  | PH                          |  |  |  |  |  |  |  |       |       |     |
| Source Of Sample              |  |                             |  |  |  |  |  |  |  |       |       |     |
| RM @ Measured Temperature     |  |                             |  |  |  |  |  |  |  |       |       |     |
| RMF @ Measured Temperature    |  |                             |  |  |  |  |  |  |  |       |       |     |
| RMC @ Measured Temperature    |  |                             |  |  |  |  |  |  |  |       |       |     |
| Source RMF                    |  | RMC                         |  |  |  |  |  |  |  |       |       |     |
| RM @ MRT                      |  | RMF @ MRT                   |  |  |  |  |  |  |  |       |       |     |
| Maximum Recorded Temperatures |  |                             |  |  |  |  |  |  |  |       |       |     |
| Circulation Stopped           |  |                             |  |  |  |  |  |  |  |       |       |     |
| Logger On Bottom              |  |                             |  |  |  |  |  |  |  |       |       |     |
| Unit Number                   |  |                             |  |  |  |  |  |  |  |       |       |     |
| Recorded By                   |  |                             |  |  |  |  |  |  |  |       |       |     |
| Witnessed By                  |  |                             |  |  |  |  |  |  |  |       |       |     |

**DISCLAIMER**

THE USE OF AND RELIANCE UPON THIS RECORDED-DATA BY THE HEREIN NAMED COMPANY (AND ANY OF ITS AFFILIATES, PARTNERS, REPRESENTATIVES, AGENTS, CONSULTANTS AND EMPLOYEES) IS SUBJECT TO THE TERMS AND CONDITIONS AGREED UPON BETWEEN SCHLUMBERGER AND THE COMPANY, INCLUDING: (a) RESTRICTIONS ON USE OF THE RECORDED-DATA; (b) DISCLAIMERS AND WAIVERS OF WARRANTIES AND REPRESENTATIONS REGARDING COMPANY'S USE OF AND RELIANCE UPON THE RECORDED-DATA; AND (c) CUSTOMER'S FULL AND SOLE RESPONSIBILITY FOR ANY INFERENCE DRAWN OR DECISION MADE IN CONNECTION WITH THE USE OF THIS RECORDED-DATA.


|  |   |
|--|---|
| OTHER SERVICES1<br>OS1: WSTA<br>OS2:<br>OS3:<br>OS4:<br>OS5: | OTHER SERVICES2<br>OS1:<br>OS2:<br>OS3:<br>OS4:<br>OS5: |
|--|---|

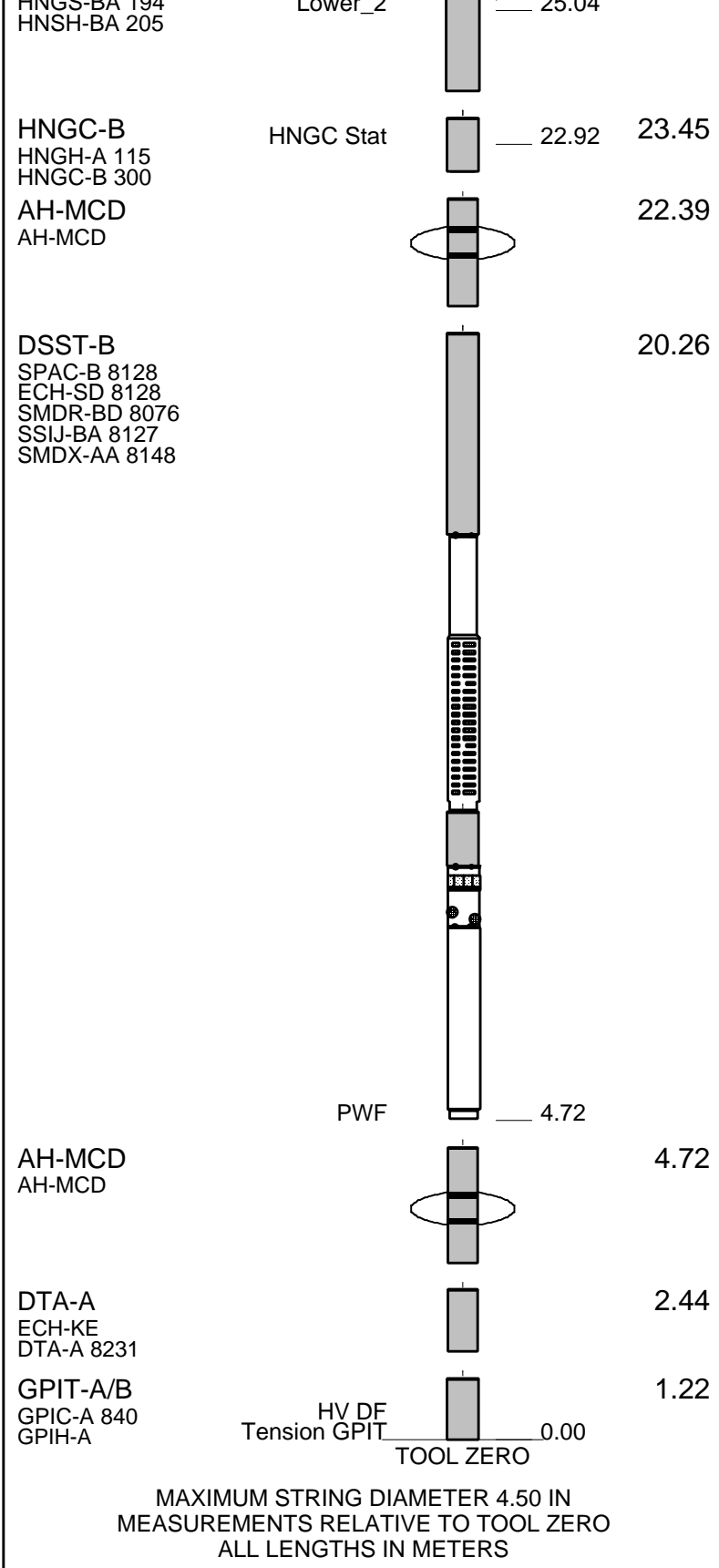
|  |                       |
|--|-----------------------|
| REMARKS: RUN NUMBER 1<br>Hole drilled with LWD.<br>All depths in Meters Below Rig Floor (MBRF).<br>Hole flushed with Sepiolite<br>Sea Floor Driller- 1066 MBRF.<br>Sea Floor Logger- 1064 MBRF.<br>Total Depth Driller- 1678 MBRF.<br>Total Depth Logger- 1574 MBRF.<br>Casing Bottom Driller- 1115 MBRF.<br>Casing Bottom Logger- 1111 MBRF.<br>Could not reach Total Depth.<br>Down Log and Two up passes. | REMARKS: RUN NUMBER 2 |
|--|-----------------------|

|   |       |      |  |       |      |
|---|-------|------|--|-------|------|
| RUN 1   |       |      | RUN 2  |       |      |
| SERVICE ORDER #:<br>PROGRAM VERSION: 12C0-301<br>FLUID LEVEL: |       |      | SERVICE ORDER #:<br>PROGRAM VERSION:<br>FLUID LEVEL: |       |      |
| LOGGED INTERVAL   | START | STOP | LOGGED INTERVAL                                      | START | STOP |
|   |       |      |  |       |      |
|   |       |      |  |       |      |

**EQUIPMENT DESCRIPTION**

|                           |  |       |  |
|---------------------------|--|-------|--|
| RUN 1                     |  | RUN 2 |  |
| <b>SURFACE EQUIPMENT</b>  |  |       |  |
| GSR-U 166<br>WITM (DTS)-A |  |       |  |

|                           |   |       |       |
|---------------------------|---|-------|-------|
| <b>DOWNHOLE EQUIPMENT</b> |   |       |       |
| LEH-QT                    |  | 27.76 |       |
| LEH-QT                    |   |       |       |
| DTC-H                     | CTEM  | 26.59 | 26.87 |
| ECH-KC                    | TelStatus<br>ToolStatu  | 25.95 |       |
| HNGS-BA                   | Upper_1   | 25.25 | 25.95 |
| HNGS-BA 104               | Lower_2   | 25.04 |       |



MAXIMUM STRING DIAMETER 4.50 IN  
 MEASUREMENTS RELATIVE TO TOOL ZERO  
 ALL LENGTHS IN METERS

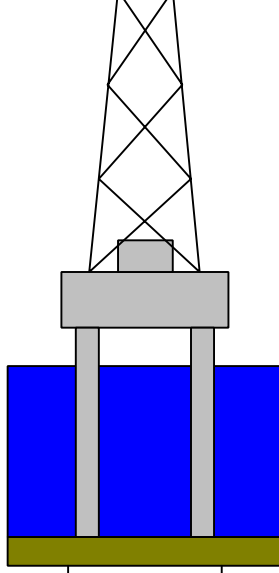
| Production String | (in) | (m) | Well Schematic | (m) | (in) | Casing String |
|-------------------|------|-----|----------------|-----|------|---------------|
|                   | OD   | ID  |                | MD  | MD   |               |
|                   |      |     |                |     |      |               |

Kelly Bushing Elevation

10.6

Mean Sea Level

0.0



0.0 5.500

Casing String



1064.0 9.875  
1115.0 5.500

Borehole Segment  
Casing Shoe

1678.0 9.875

Borehole Segment Bottom

**Schlumberger**

**SECOND PASS**

MAXIS Field Log

**Output DLIS Files**

DEFAULT      DSI\_NGS\_017LUP      FN:17    PRODUCER    20-Jun-2005 01:43    1575.1 M    1057.4 M

**OP System Version: 12C0-301**  
MCM

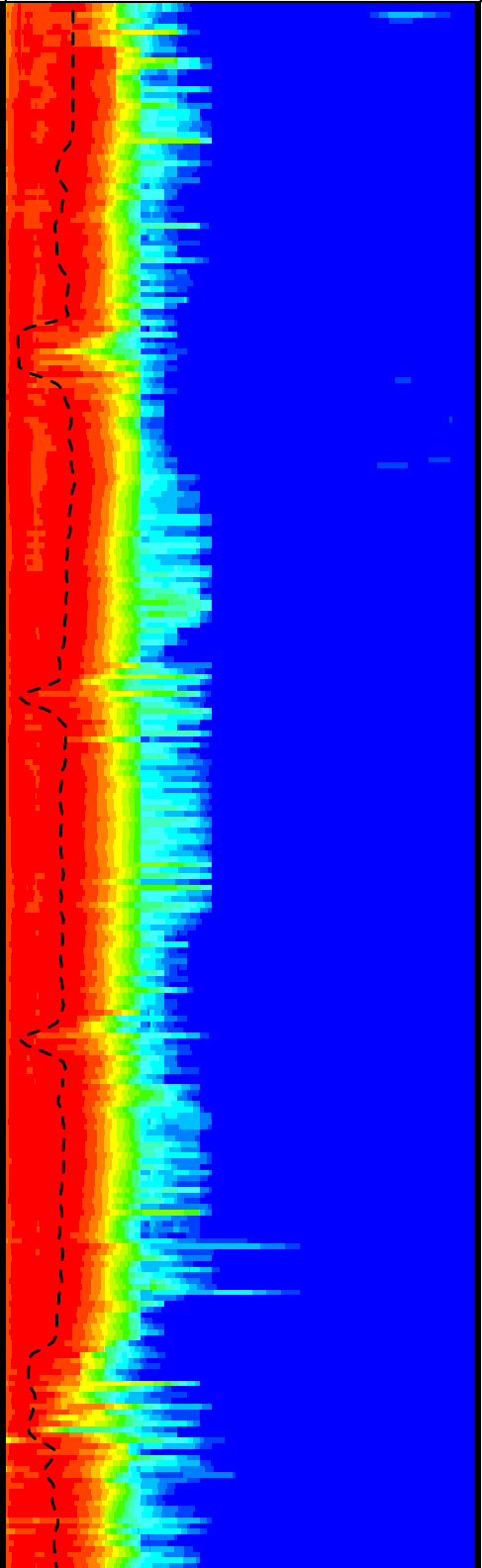
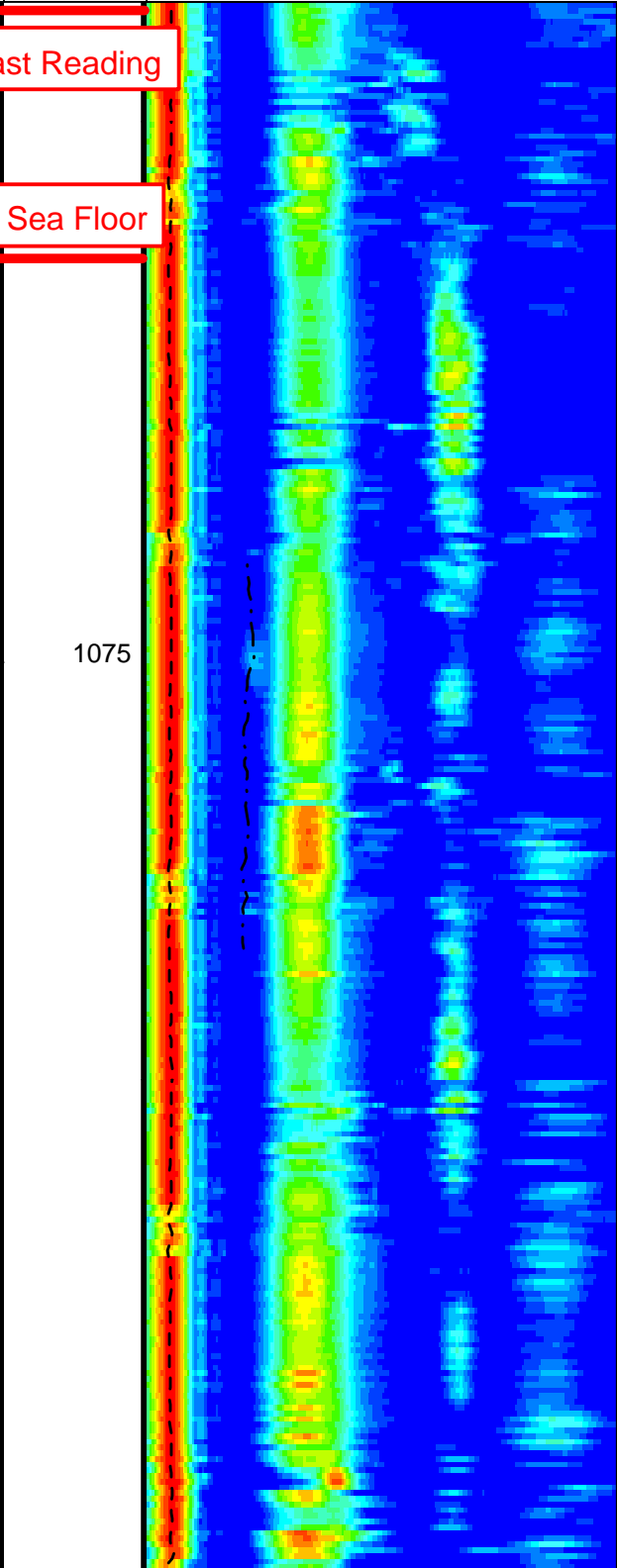
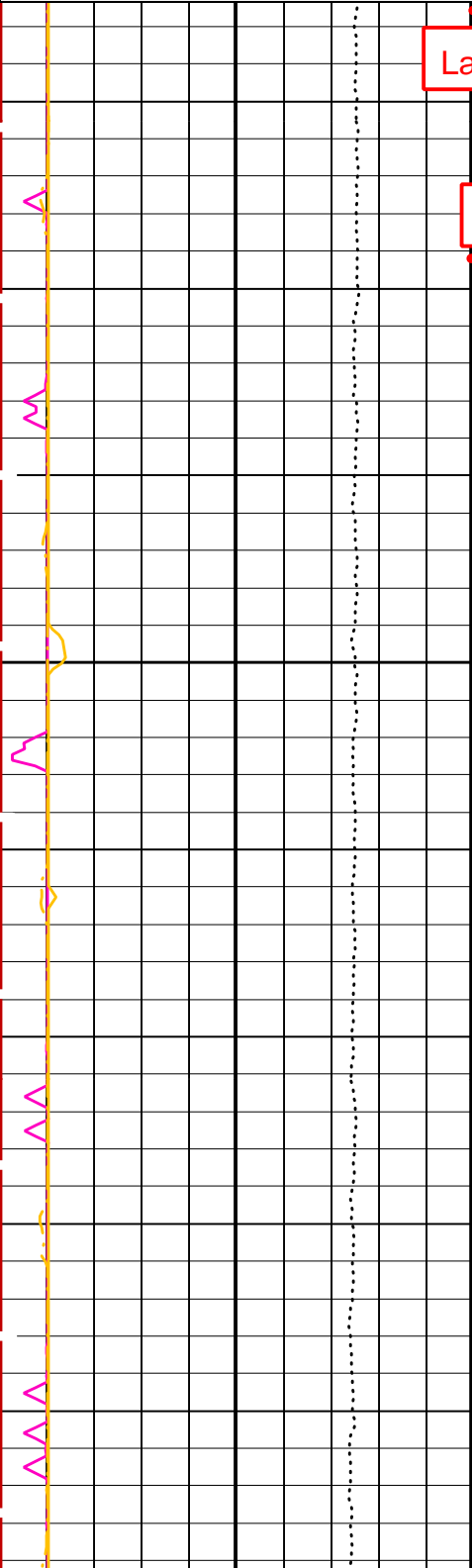
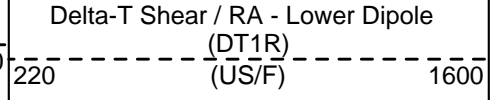
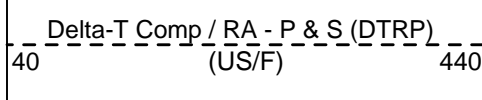
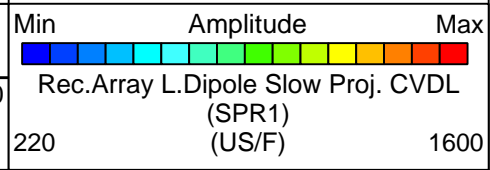
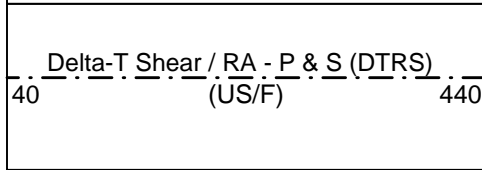
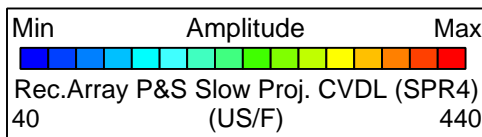
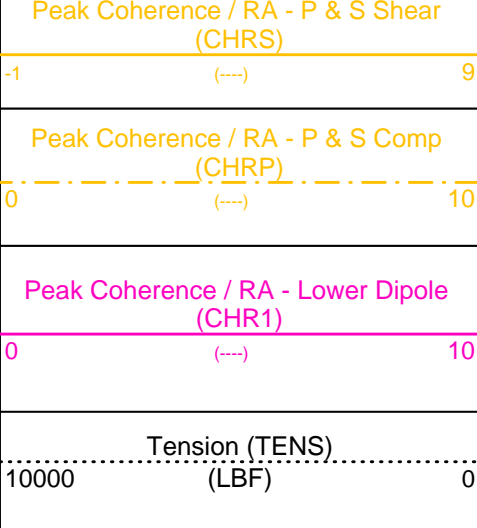
|          |          |        |          |
|----------|----------|--------|----------|
| GPIT-A/B | 12C0-301 | DTA-A  | 12C0-301 |
| DSST-B   | 12C0-301 | HNGC-B | 12C0-301 |
| HNGS-BA  | 12C0-301 | DTC-H  | 12C0-301 |

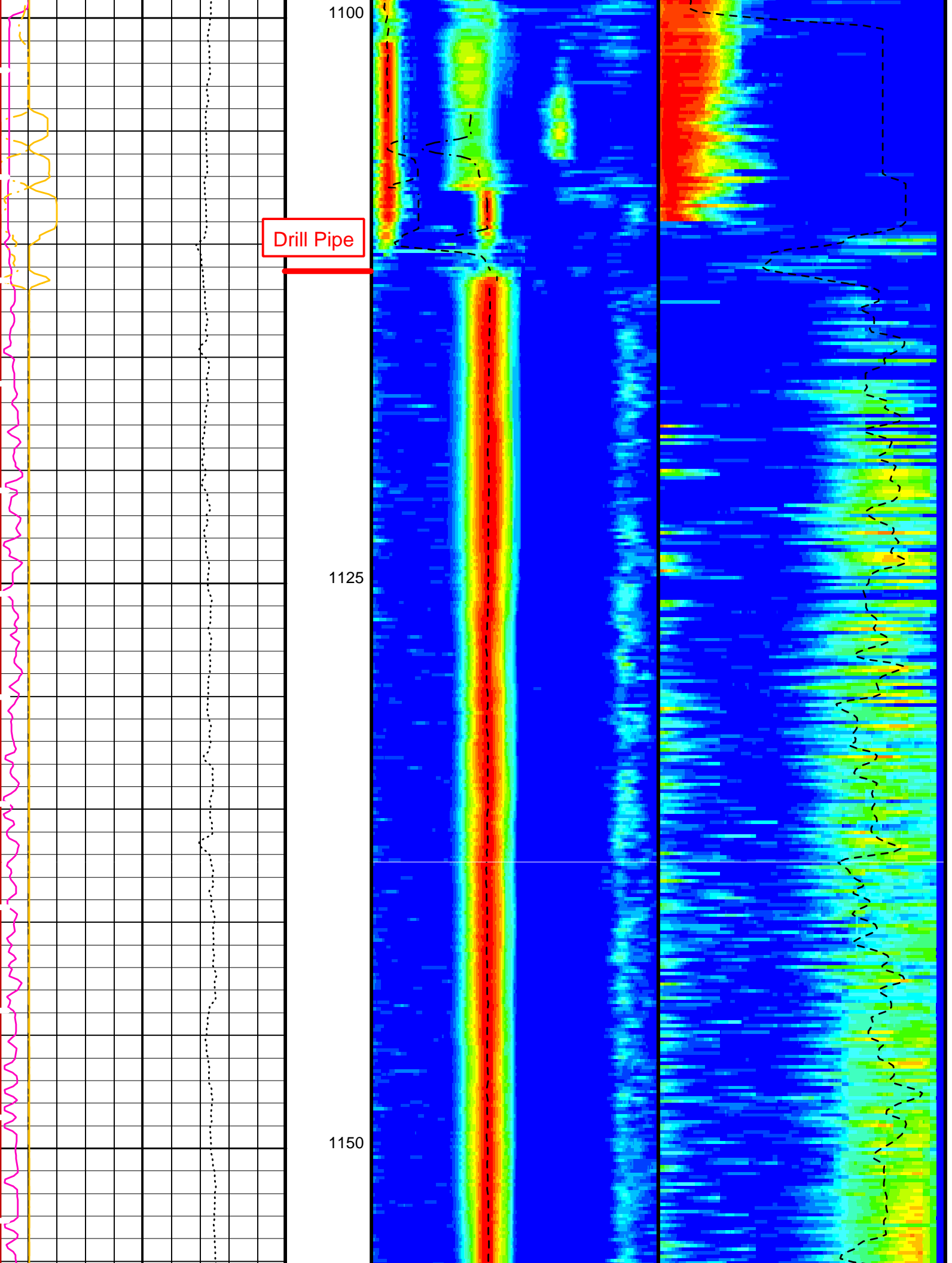
PIP SUMMARY

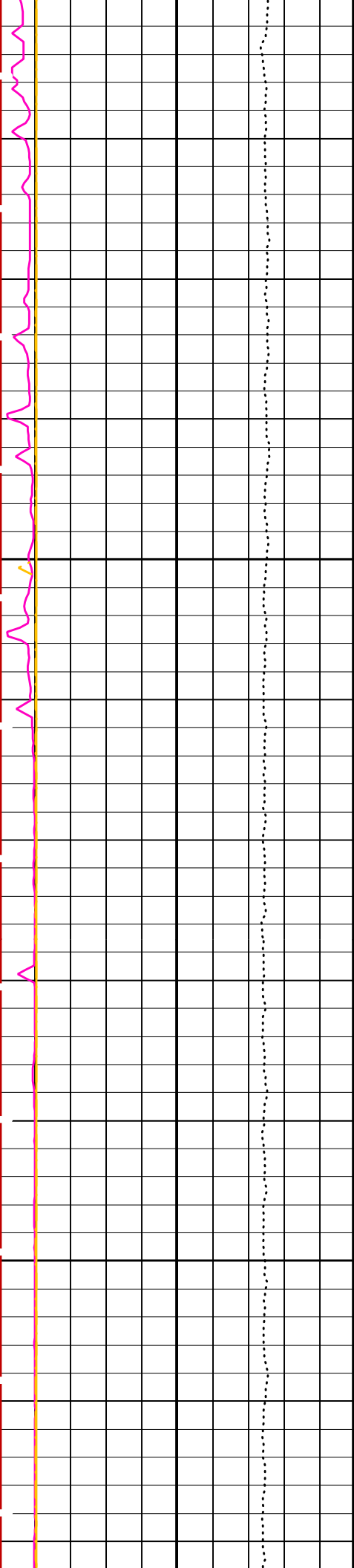
 Time Mark Every 60 S

Waveform Data Copy Indicator 4 -  
Monopole P&S (WCI4)

0      (---)      10

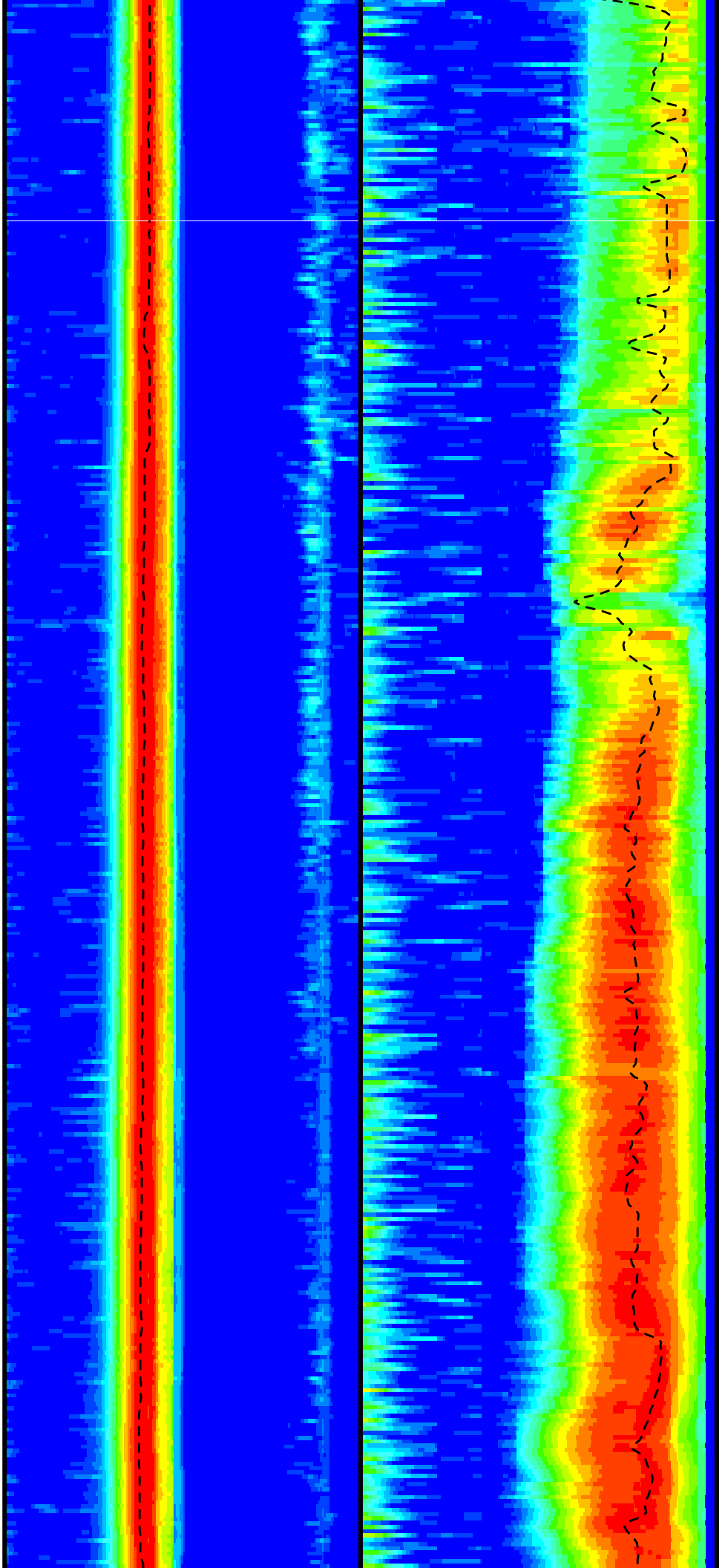




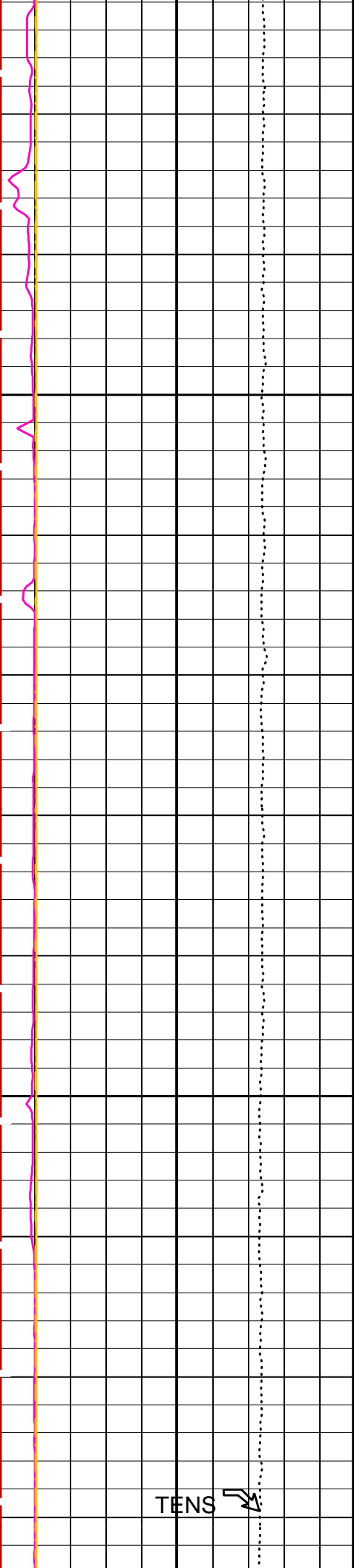


1175

1200

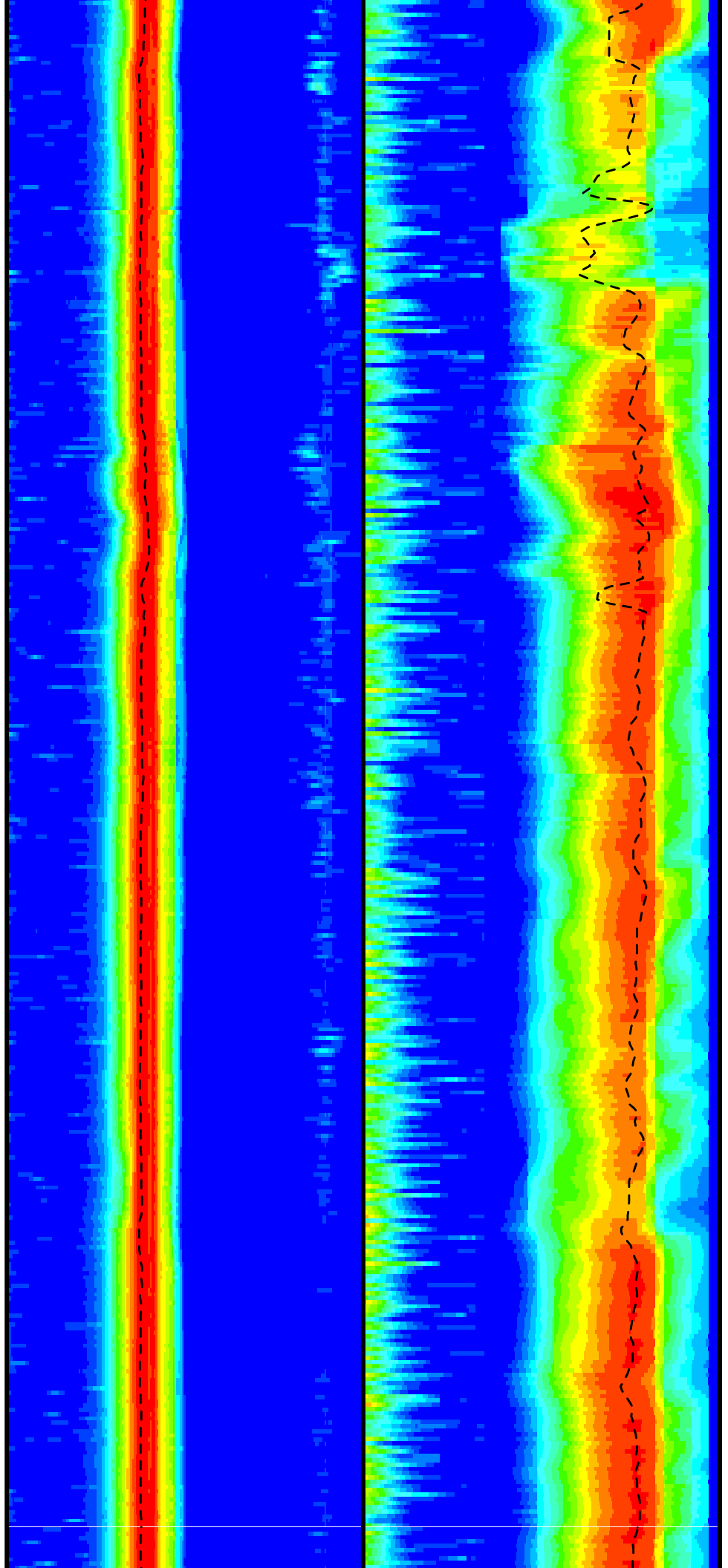


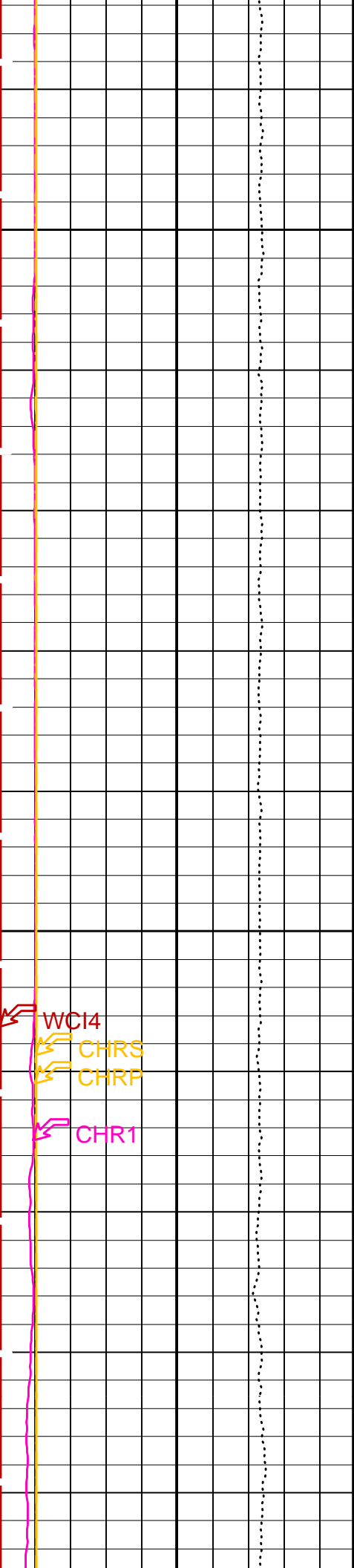




1225

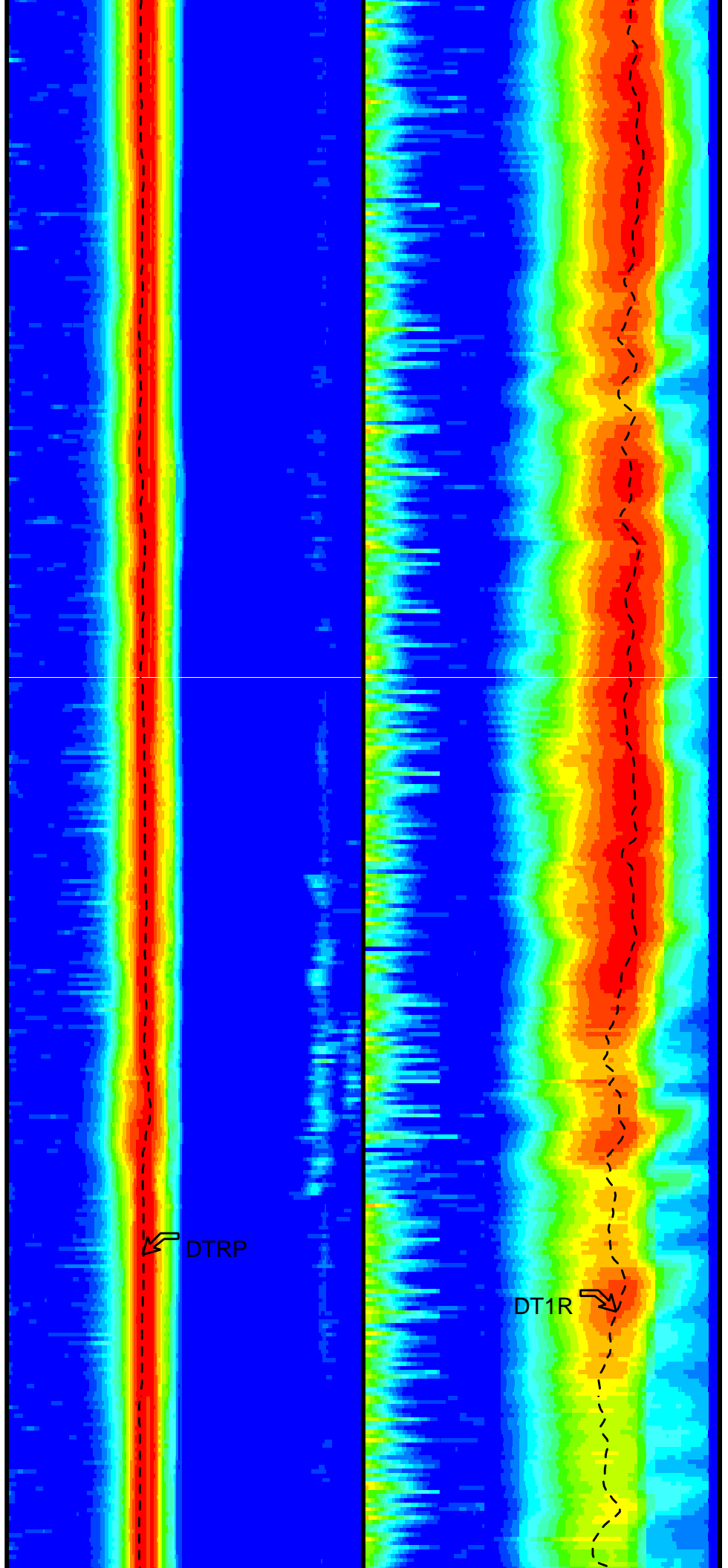
1250

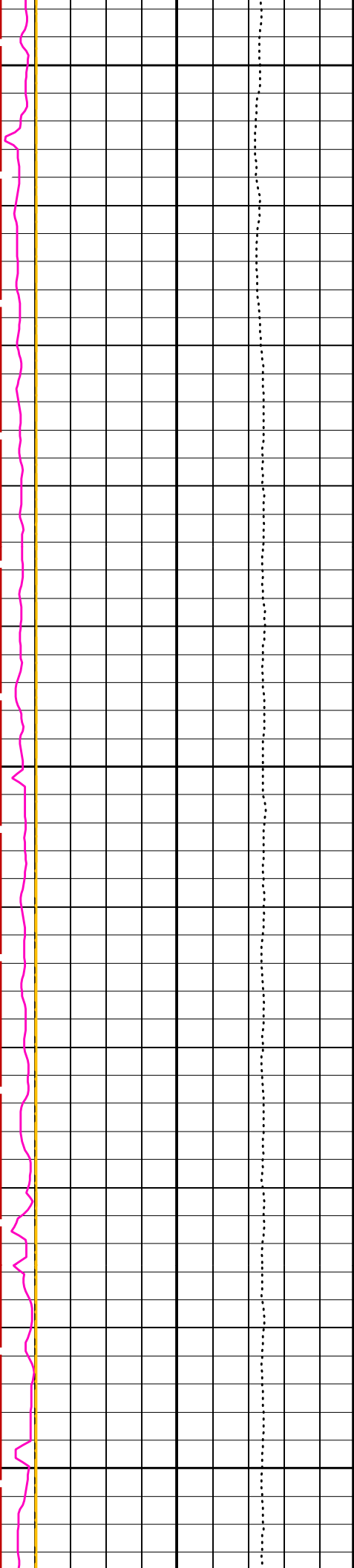




1275

1300

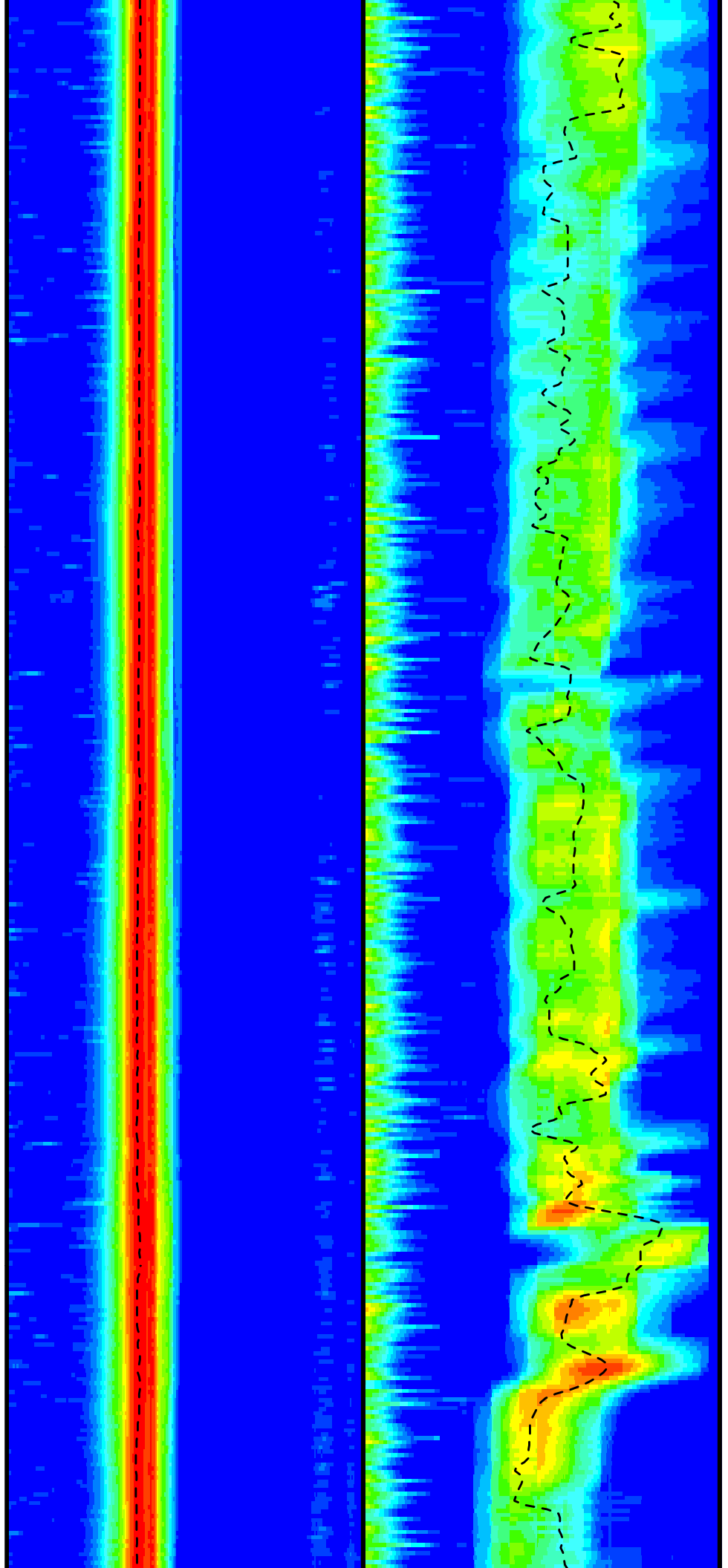


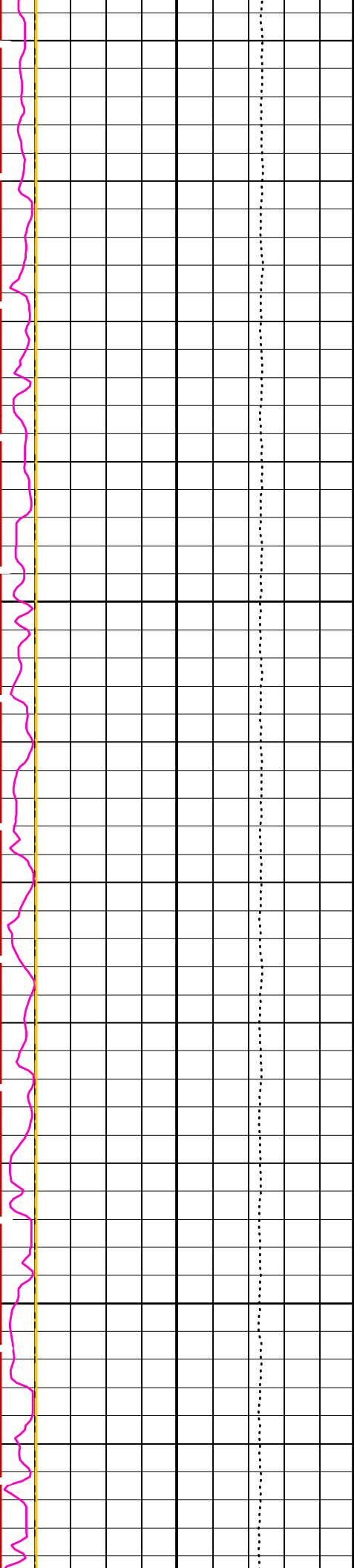


1325

1350

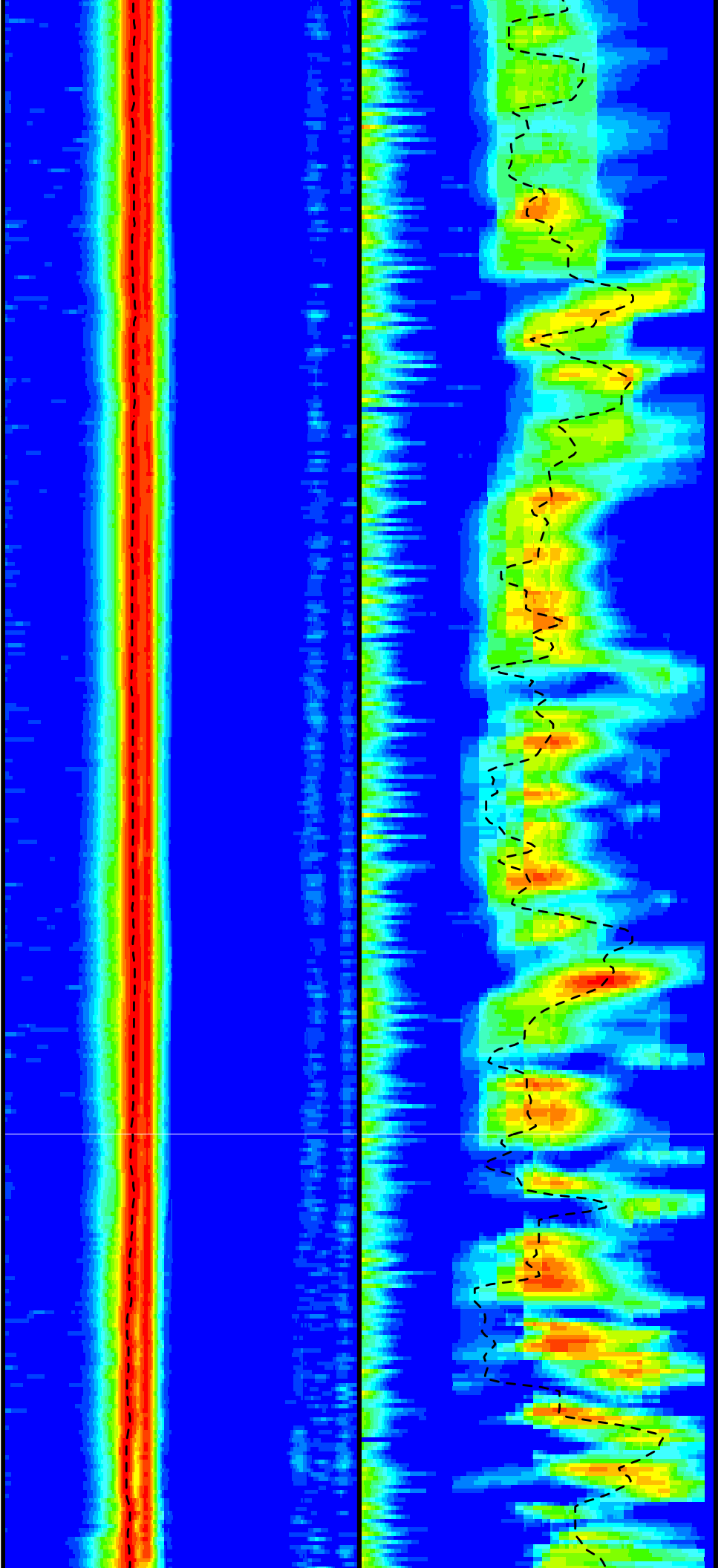
1375

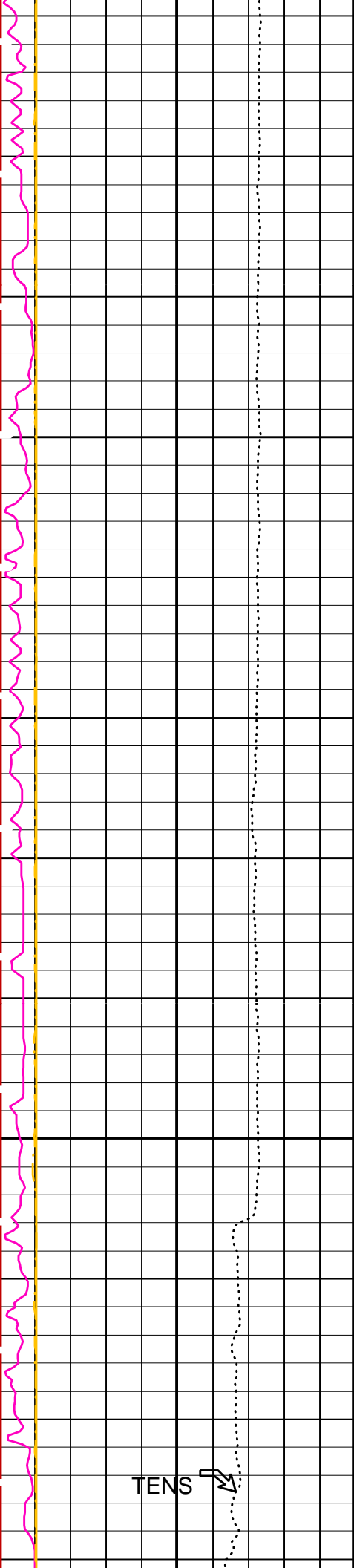




1400

1425

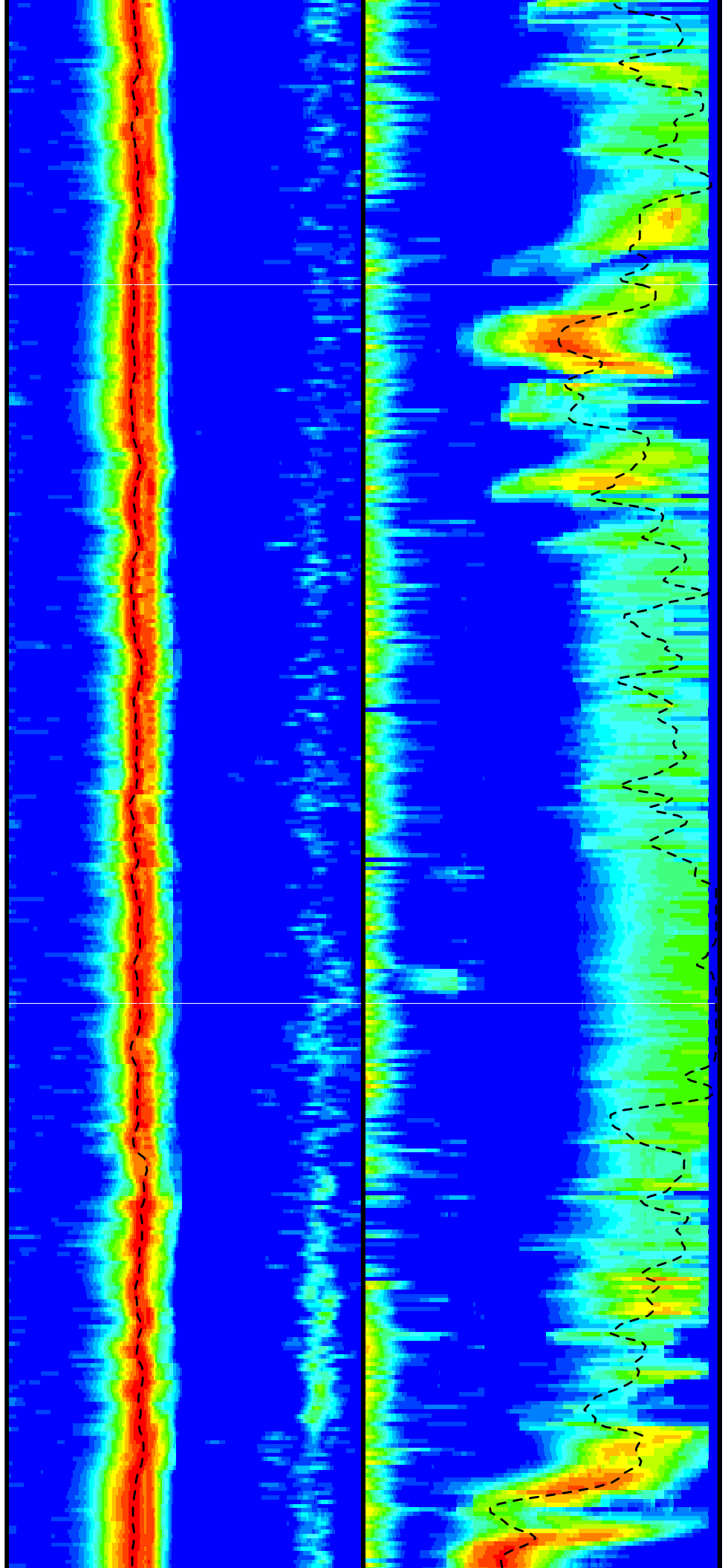


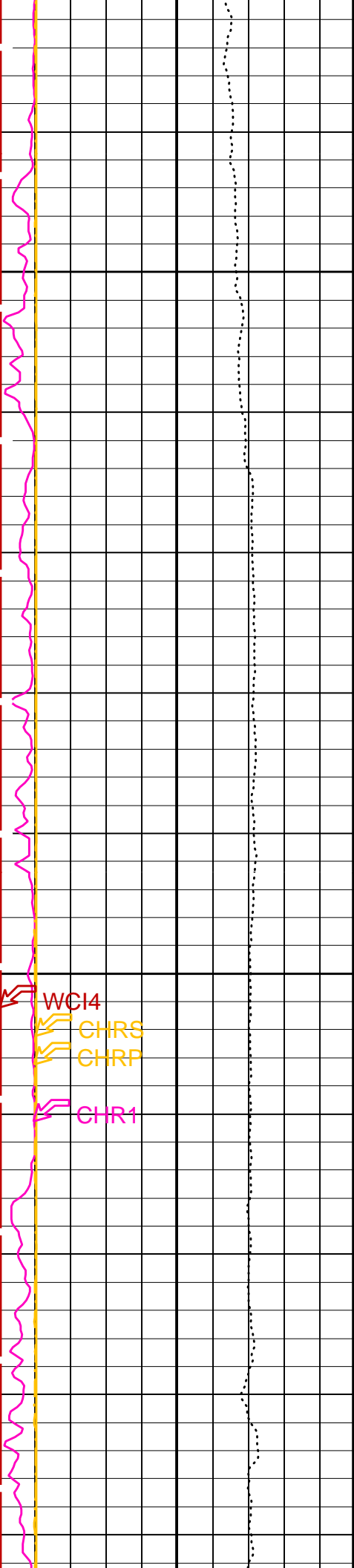


1450

1475

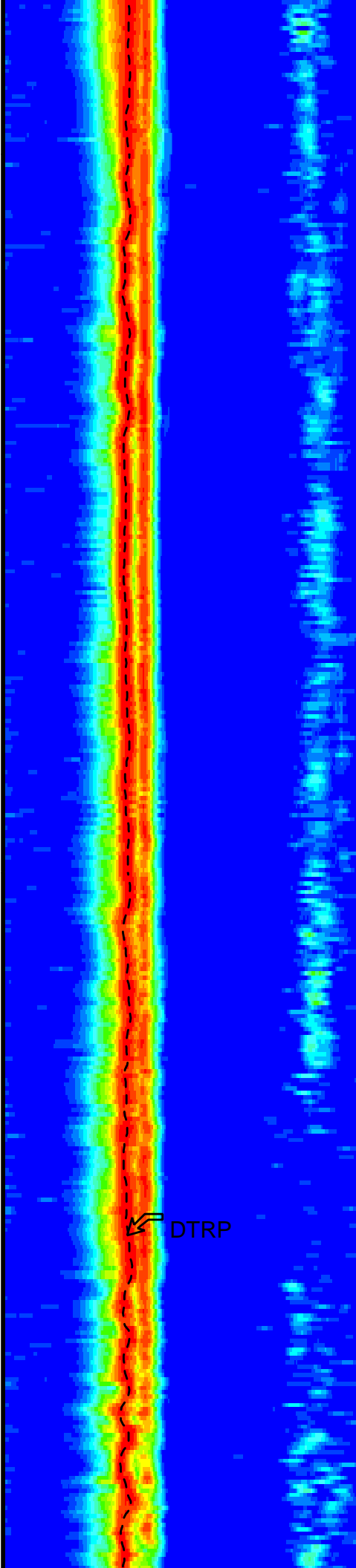
TENS ↘



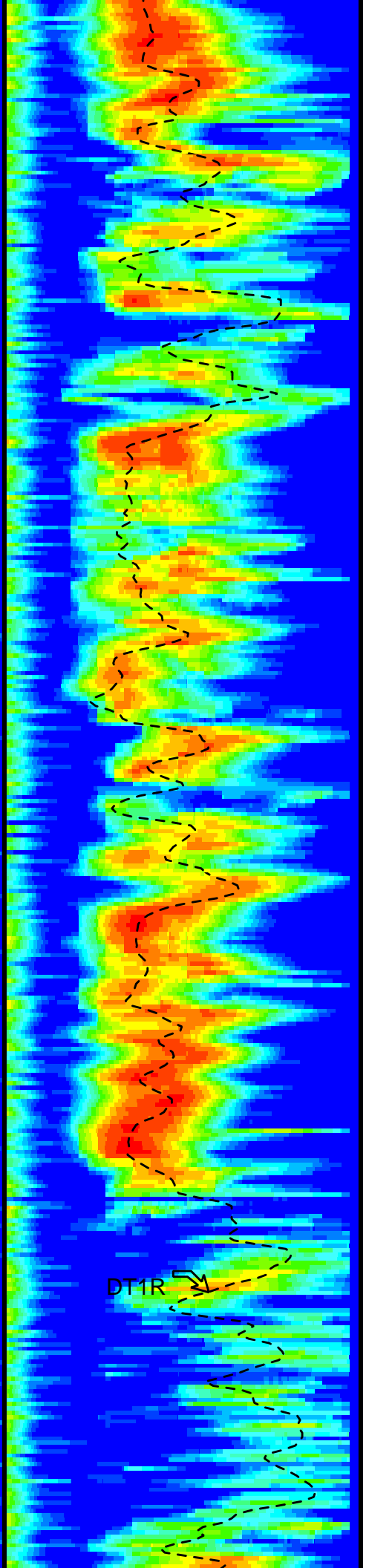


1500

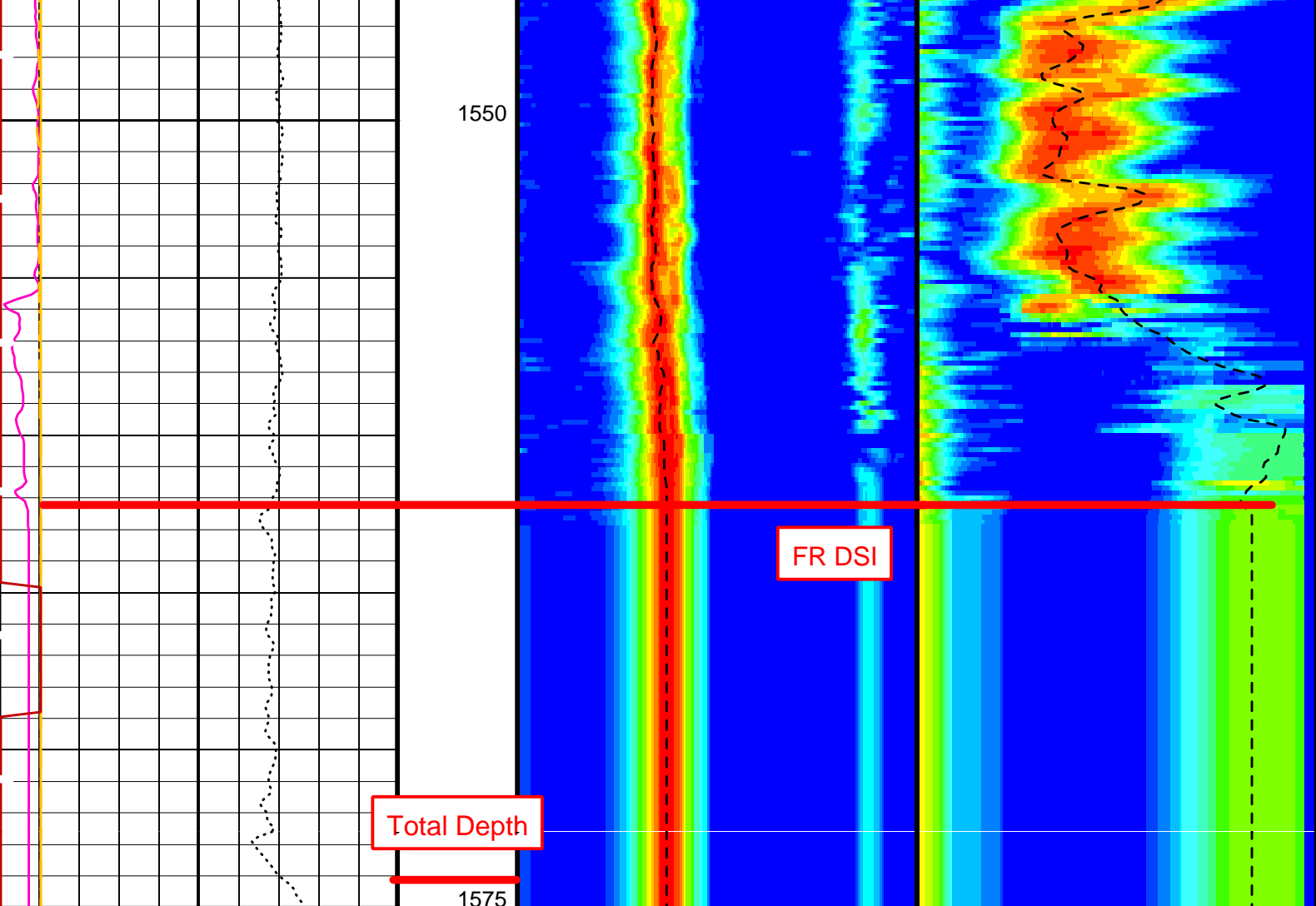
1525



DTRP



DT1R



|   |   |   |
|---|---|---|
| Tension (TENS)<br>(LBF)                                 | Delta-T Comp / RA - P & S (DTRP)<br>(US/F)                                      | Delta-T Shear / RA - Lower Dipole<br>(DT1R)<br>(US/F)                                   |
| 10000 ----- 0   | 40 ----- 440  | 220 ----- 1600  |
| Peak Coherence / RA - Lower Dipole<br>(CHR1)            | Delta-T Shear / RA - P & S (DTRS)<br>(US/F)                                     | Min ----- Amplitude ----- Max<br>Rec.Array L.Dipole Slow Proj. CVDL<br>(SPR1)<br>(US/F) |
| 0 ----- 10  | 40 ----- 440  | 220 ----- 1600  |
| Peak Coherence / RA - P & S Comp<br>(CHRP)              | Min ----- Amplitude ----- Max<br>Rec.Array P&S Slow Proj. CVDL (SPR4)<br>(US/F) |   |
| 0 ----- 10  | 40 ----- 440  |   |
| Peak Coherence / RA - P & S Shear<br>(CHRS)             |   |   |
| -1 ----- 9  |   |   |
| Waveform Data Copy Indicator 4 -<br>Monopole P&S (WCI4) |   |   |
| 0 ----- 10  |   |   |

PIP SUMMARY

Time Mark Every 60 S

Parameters

| DLIS Name | Description   | Value    |
|-----------|---|----------|
| DSST-B:   | Dipole Shear Imager - B                                 |          |
| BHS       | Borehole Status   | OPEN     |
| CASF      | Label Casing Function - Monopole P&S                    | 50       |
| COLL      | Label Slowness Lower Limit - Monopole P&S Compressional | 40 US/F  |
| COUL      | Label Slowness Upper Limit - Monopole P&S Compressional | 240 US/F |
| DDE1      | Digitizing Delay 1                                      | 0 US     |

|      |  |            |      |
|------|--|------------|------|
| DDE4 | Digitizing Delay 4   | 0          | US   |
| DDEX | Digitizing Delay X   | 0          | US   |
| DLCS | Label Compressional Source - Dipole Shear                                | USE        |      |
| DSHL | Label Slowness Lower Limit - Dipole Shear                                | 220        | US/F |
| DSHU | Label Slowness Upper Limit - Dipole Shear                                | 1600       | US/F |
| DSI1 | Digitizer Sample Interval 1  | 40         | US   |
| DSI4 | Digitizer Sample Interval 4  | 10         | US   |
| DSIX | Digitizer Sample Interval X  | 40         | US   |
| DTCS | Compressional Delta-T Source for DTCS Channel                            | PS_COMP    |      |
| DTF  | Delta-T Fluid  | 189        | US/F |
| DWC1 | Digitizer Word Count 1   | 512        |      |
| DWC4 | Digitizer Word Count 4   | 512        |      |
| DWCX | Digitizer Word Count X   | 512        |      |
| FILG | Label Fill Gap Control - Monopole P&S                                    | COMP_SHEAR |      |
| LFC  | Label Formation Character - Monopole P&S                                 | DYNAMIC    |      |
| LTXG | Lower Dipole Transmitter Geometry  | 156        | IN   |
| MCS  | Mean Casing Slowness   | 57         | US/F |
| MTXG | Monopole Transmitter Geometry  | 186        | IN   |
| NWI1 | Number Waveform Items 1  | 8          |      |
| NWI4 | Number Waveform Items 4  | 8          |      |
| NWIX | Number Waveform Items X  | 0          |      |
| RSMN | Label Shear/Compressional Minimum Ratio - Monopole P&S                   | 1.4        |      |
| RSMX | Label Shear/Compressional Maximum Ratio - Monopole P&S                   | 2.12       |      |
| RX1G | Receiver 1 Geometry  | 294        | IN   |
| RX2G | Receiver 2 Geometry  | 300        | IN   |
| RX3G | Receiver 3 Geometry  | 306        | IN   |
| RX4G | Receiver 4 Geometry  | 312        | IN   |
| RX5G | Receiver 5 Geometry  | 318        | IN   |
| RX6G | Receiver 6 Geometry  | 324        | IN   |
| RX7G | Receiver 7 Geometry  | 330        | IN   |
| RX8G | Receiver 8 Geometry  | 336        | IN   |
| SAM1 | DSST Sonic Acquisition Mode 1 - Lower Dipole Mode                        | LFD_EVEN   |      |
| SAM4 | DSST Sonic Acquisition Mode 4 - High Frequency Monopole Mode for P&S     | MFD_EVEN   |      |
| SAMX | DSST Sonic Acquisition Mode X - Both Dipoles or Monopole Mode for Expert | OFF        |      |
| SAS1 | STC Sonic Array Status - Lower Dipole                                    | 255        |      |
| SAS4 | STC Sonic Array Status - Monopole P&S                                    | 255        |      |
| SBO1 | STC Search Band Offset - Lower Dipole                                    | 3000       | US   |
| SBO4 | STC Search Band Offset - Monopole P&S                                    | 500        | US   |
| SBR4 | STC Baseline Removal - Monopole P&S                                      | ON         |      |
| SBW1 | STC Search Bandwidth - Lower Dipole                                      | 8000       | US   |
| SBW4 | STC Search Bandwidth - Monopole P&S                                      | 2000       | US   |
| SFC1 | STC Formation Character - Lower Dipole                                   | SELECTABLE |      |
| SFC4 | STC Formation Character - Monopole P&S                                   | SELECTABLE |      |
| SFM1 | STC Filter - Lower Dipole  | B.3-1.5K   |      |
| SFM4 | STC Filter - Monopole P&S  | B3-12K     |      |
| SHLL | Label Slowness Lower Limit - Monopole P&S Shear                          | 75         | US/F |
| SHUL | Label Slowness Upper Limit - Monopole P&S Shear                          | 240        | US/F |
| SLL1 | STC Slowness Lower Limit - Lower Dipole                                  | 220        | US/F |
| SLL4 | STC Slowness Lower Limit - Monopole P&S                                  | 40         | US/F |
| SST1 | STC Slowness Step - Lower Dipole   | 4          | US/F |
| SST4 | STC Slowness Step - Monopole P&S   | 2          | US/F |
| SSW1 | STC Source Waveform - Lower Dipole                                       | WF_SAM1    |      |
| SSW4 | STC Source Waveform - Monopole P&S                                       | WF_SAM4    |      |
| STLL | Label Slowness Lower Limit - Monopole Stoneley                           | 220        | US/F |
| STUL | Label Slowness Upper Limit - Monopole Stoneley                           | 1600       | US/F |
| SUL1 | STC Slowness Upper Limit - Lower Dipole                                  | 1600       | US/F |
| SUL4 | STC Slowness Upper Limit - Monopole P&S                                  | 440        | US/F |
| SWD1 | STC Slowness Width - Lower Dipole  | 40         | US/F |
| SWD4 | STC Slowness Width - Monopole P&S  | 10         | US/F |
| TBF1 | STC Time for Baseline Fill - Lower Dipole                                | 0          | US   |
| TBF4 | STC Time for Baseline Fill - Monopole P&S                                | 300        | US   |
| TLL1 | STC Time Lower Limit - Lower Dipole                                      | 1530       | US   |
| TLL4 | STC Time Lower Limit - Monopole P&S                                      | 150        | US   |
| TST1 | STC Time Step - Lower Dipole   | 200        | US   |
| TST4 | STC Time Step - Monopole P&S   | 50         | US   |
| TUL1 | STC Time Upper Limit - Lower Dipole                                      | 20440      | US   |
| TUL4 | STC Time Upper Limit - Monopole P&S                                      | 5110       | US   |
| TWD1 | STC Time Width - Lower Dipole  | 2000       | US   |
| TWD4 | STC Time Width - Monopole P&S  | 1000       | US   |
| TWI1 | STC Integration Time Window - Lower Dipole                               | 1600       | US   |
| TWI4 | STC Integration Time Window - Monopole P&S                               | 500        | US   |
| TWSX | Transmitter Waveform Select X  | 0          |      |
| WFM4 | Waveform Mode 4  | W1         |      |
| BHS  | HNCS-BA: Hostile Natural Gamma Ray Sonde<br>Borehole Status              | OPEN       |      |

Format: DSST\_P\_S\_LOWER\_VDL\_COLOR Vertical Scale: 1:200 Graphics File Created: 20-Jun-2005 01:43

OP System Version: 12C0-301  
MCM



|         |          |        |          |
|---------|----------|--------|----------|
| DSST-B  | 12C0-301 | HNGC-B | 12C0-301 |
| HNGS-BA | 12C0-301 | DTC-H  | 12C0-301 |

### Output DLIS Files

DEFAULT      DSI\_NGS\_017LUP      FN:17    PRODUCER    20-Jun-2005 01:43



## FIRST PASS

MAXIS Field Log

### Output DLIS Files

DEFAULT      DSI\_NGS\_016LUP      FN:16    PRODUCER    19-Jun-2005 23:37    1572.8 M    1150.0 M

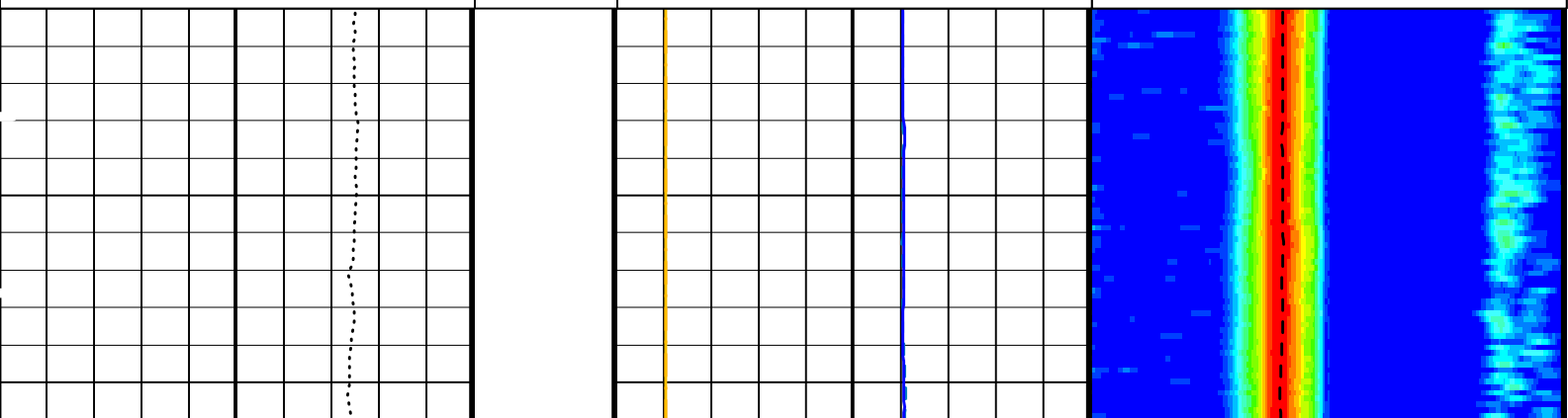
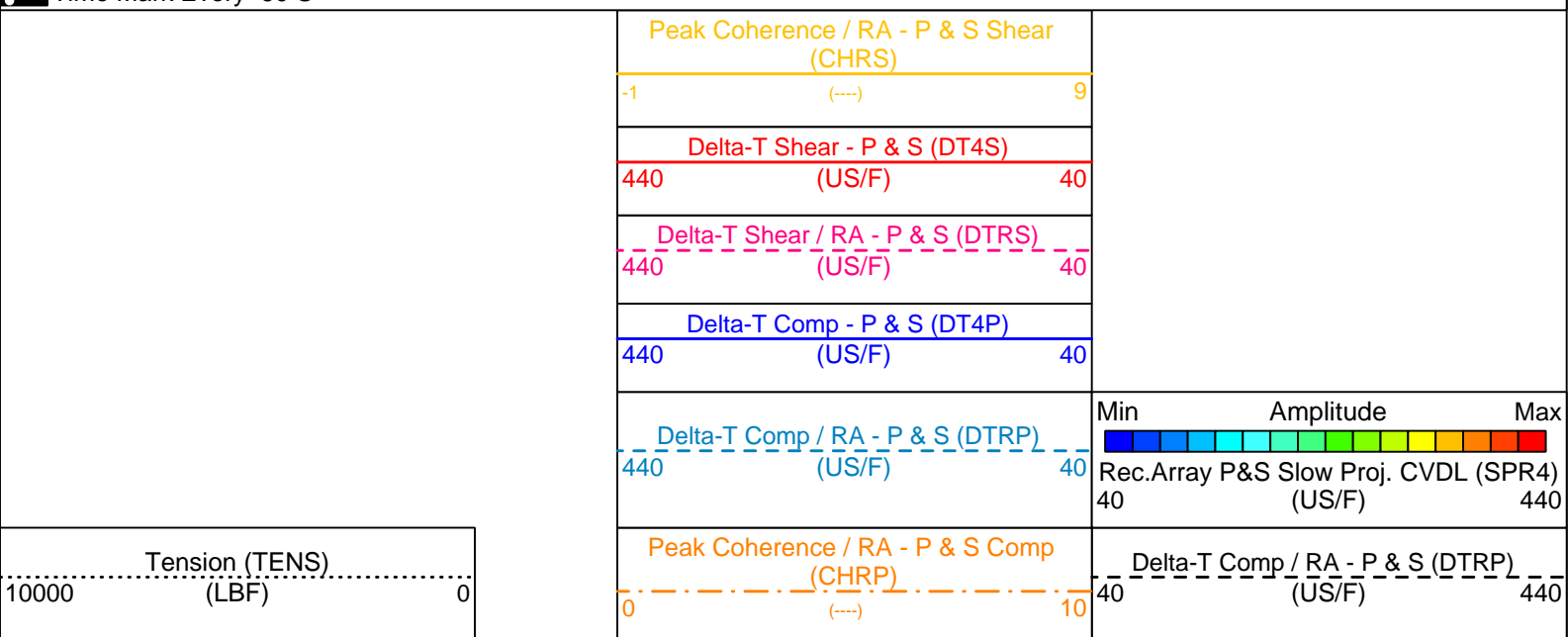
### OP System Version: 12C0-301

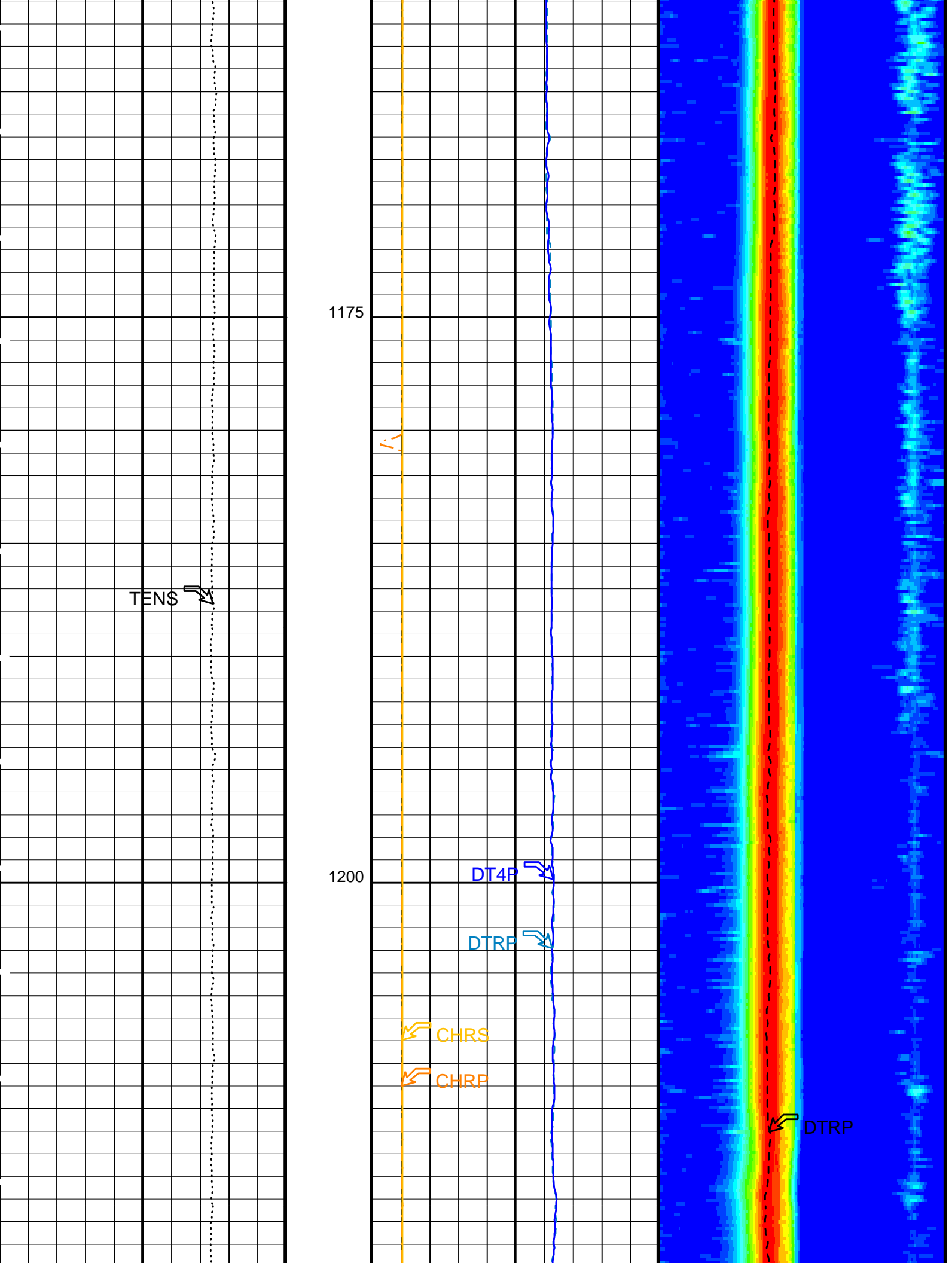
MCM

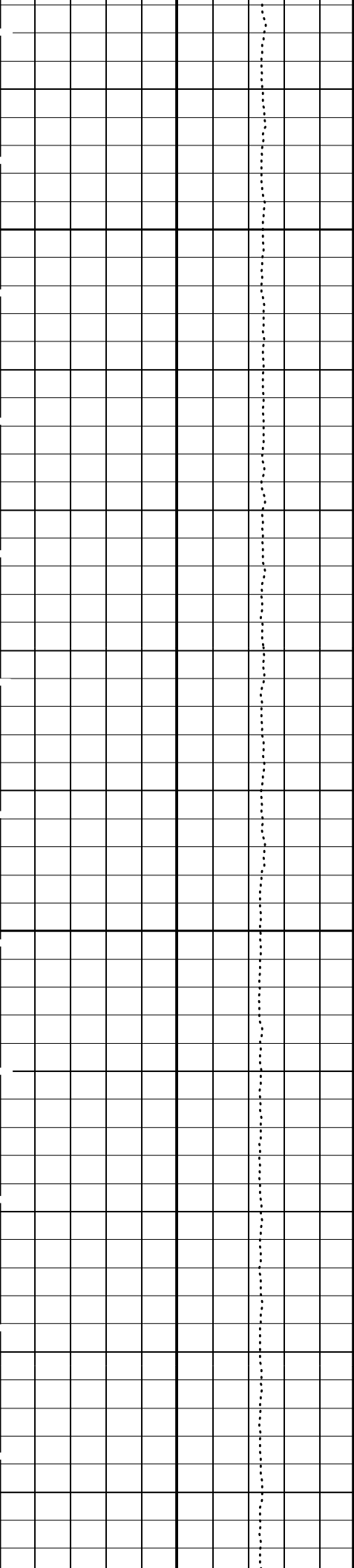
|          |          |        |          |
|----------|----------|--------|----------|
| GPIT-A/B | 12C0-301 | DTA-A  | 12C0-301 |
| DSST-B   | 12C0-301 | HNGC-B | 12C0-301 |
| HNGS-BA  | 12C0-301 | DTC-H  | 12C0-301 |

#### PIP SUMMARY

▶ Time Mark Every 60 S

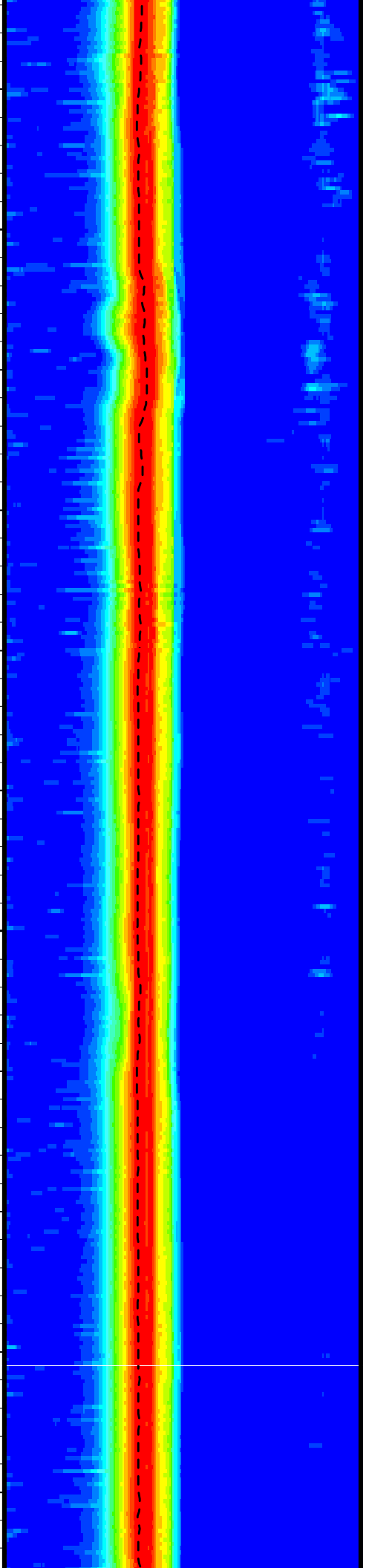
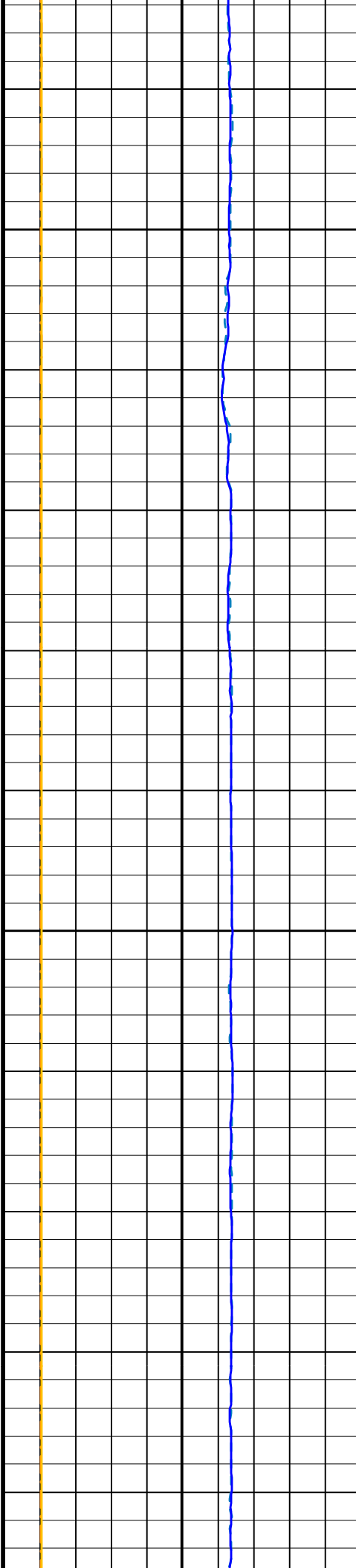


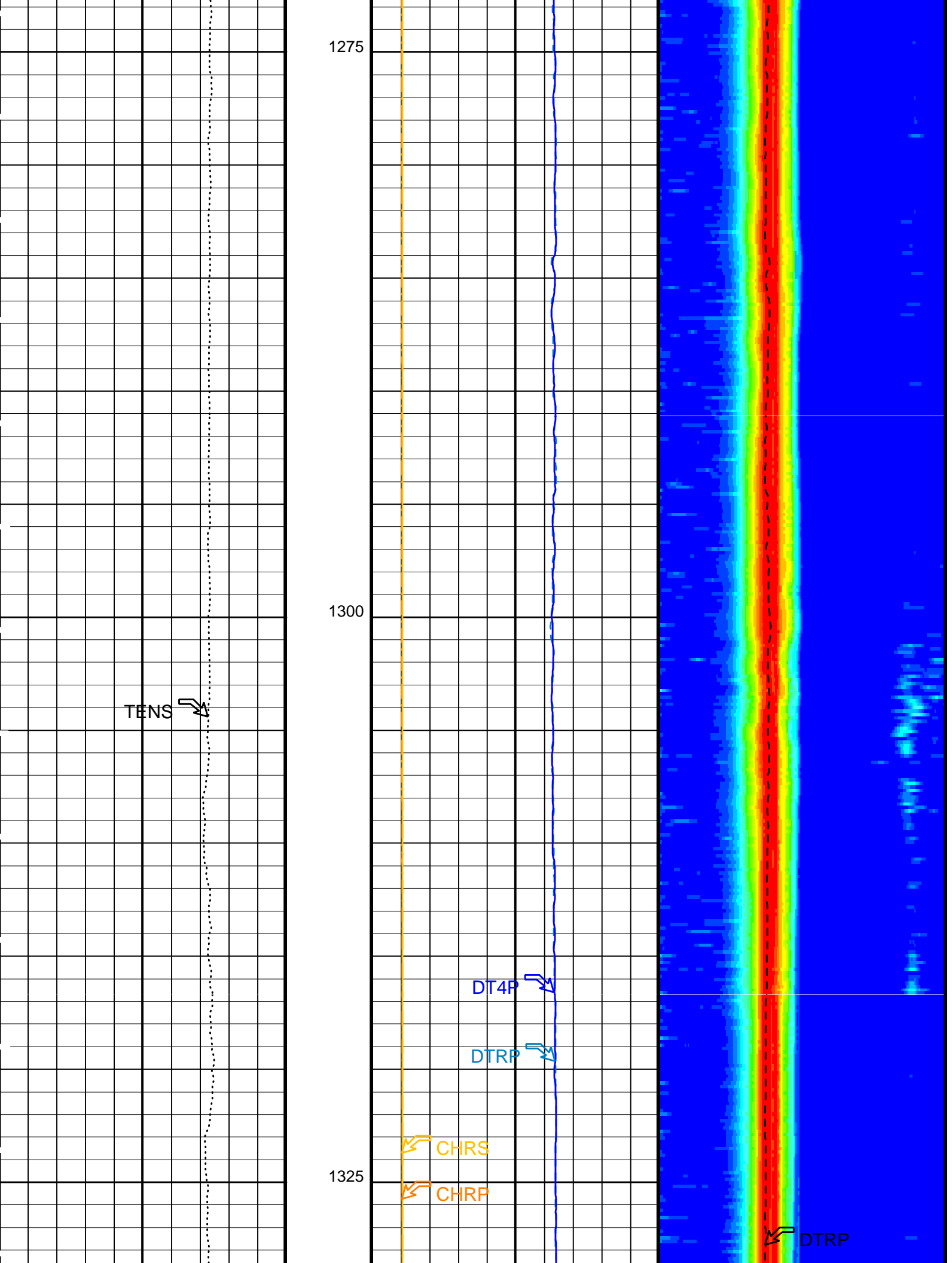




1225

1250





1275

1300

1325

TENS

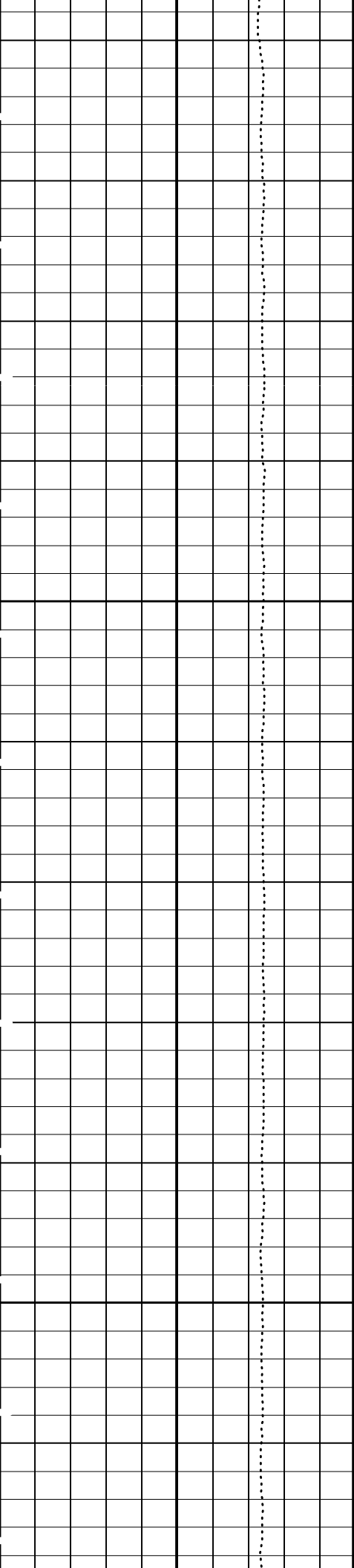
DT4P

DTRP

CHRS

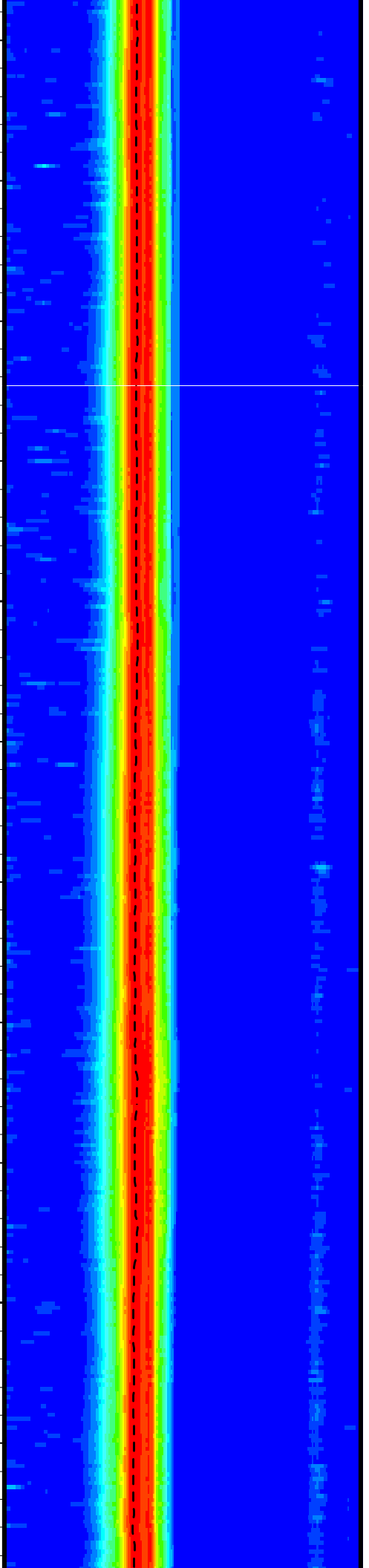
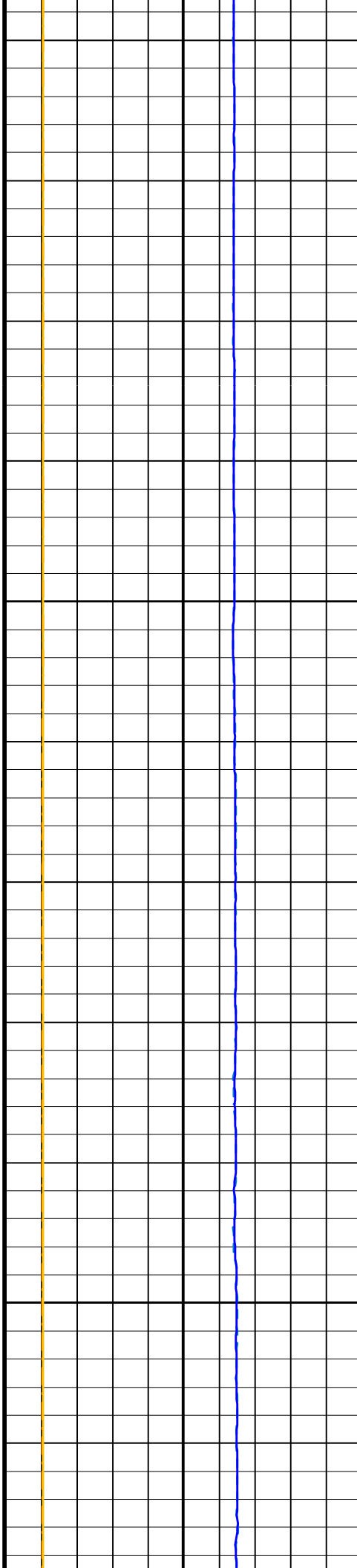
CHRP

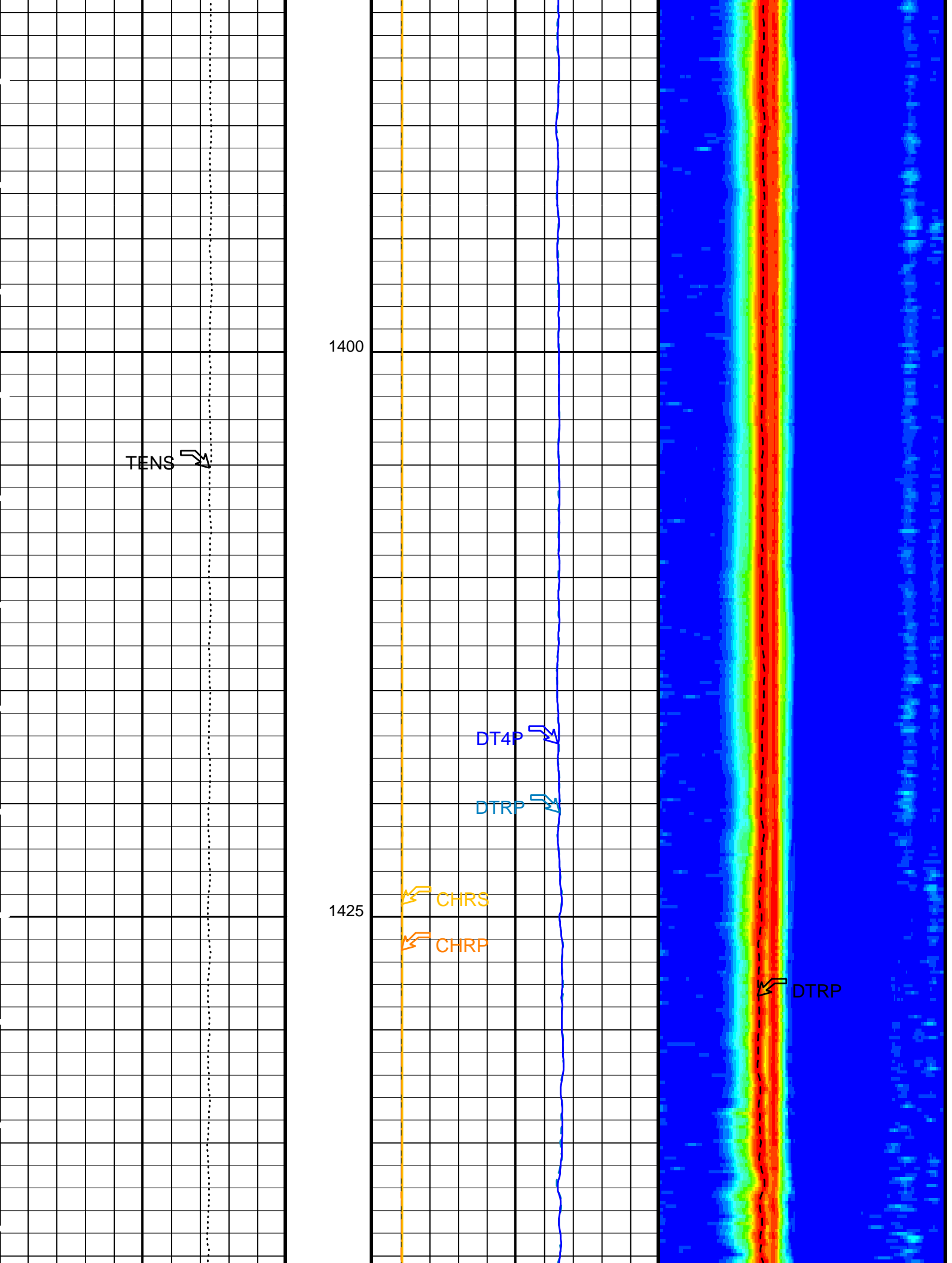
DTRP

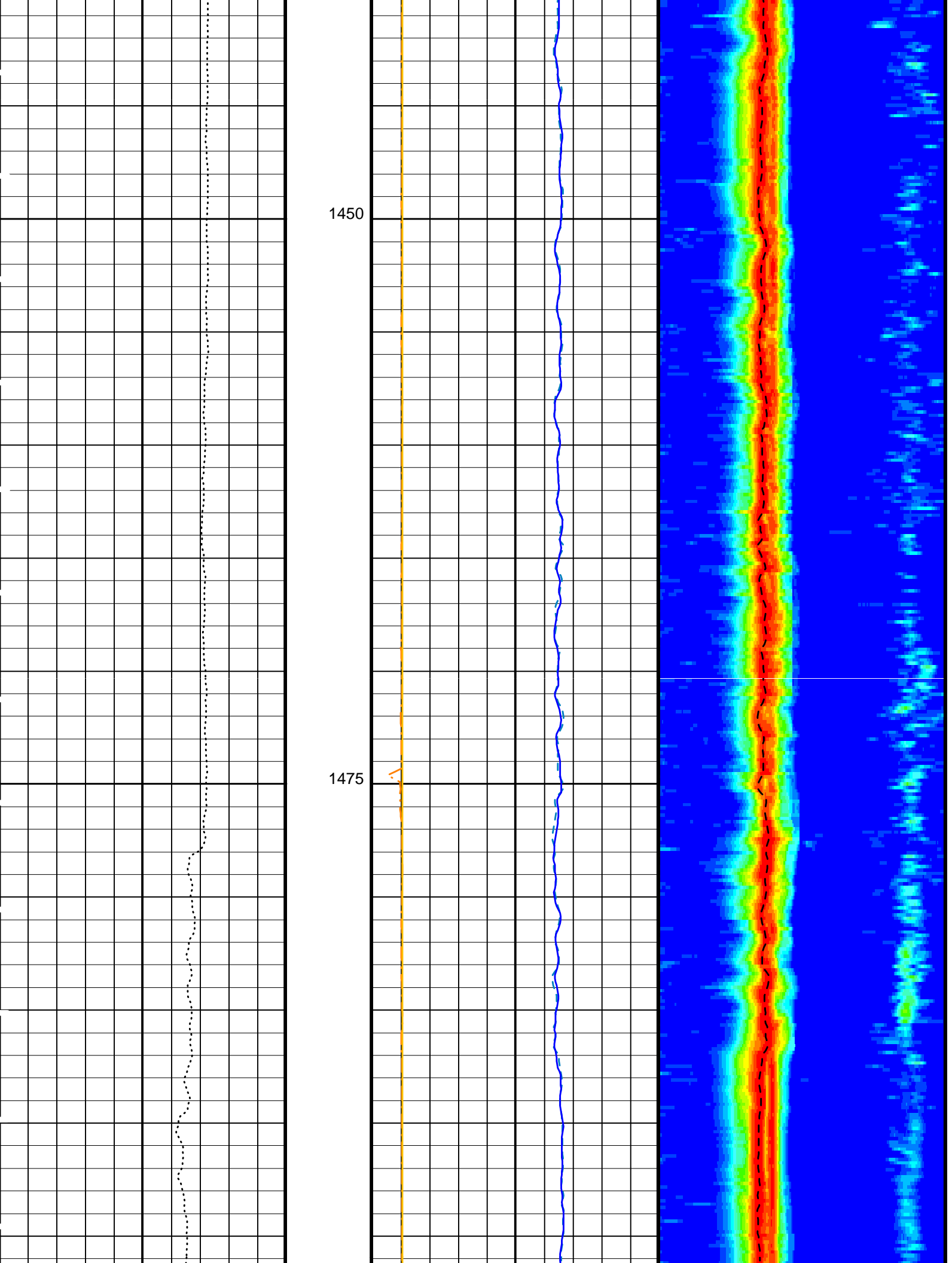


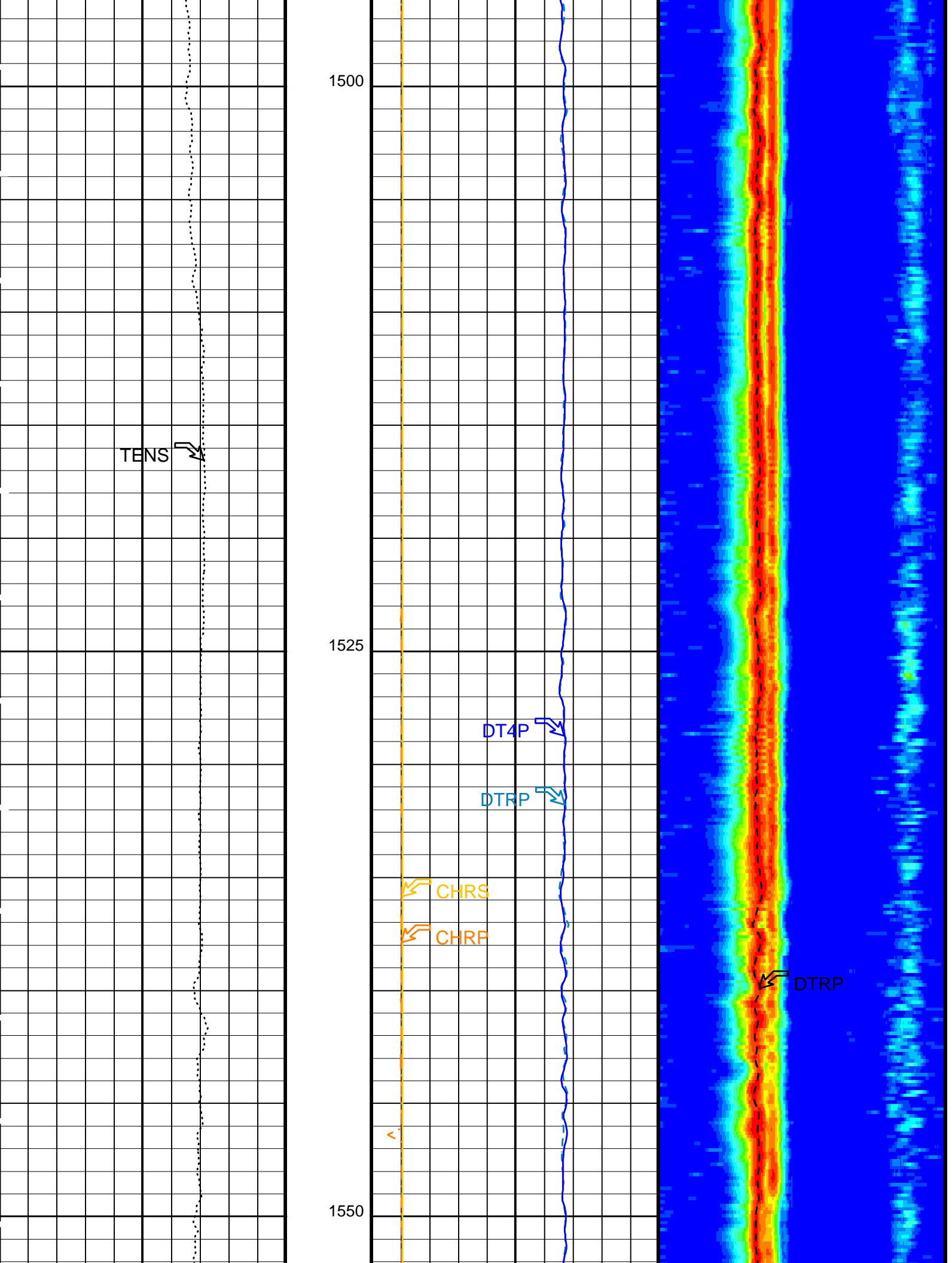
1350

1375

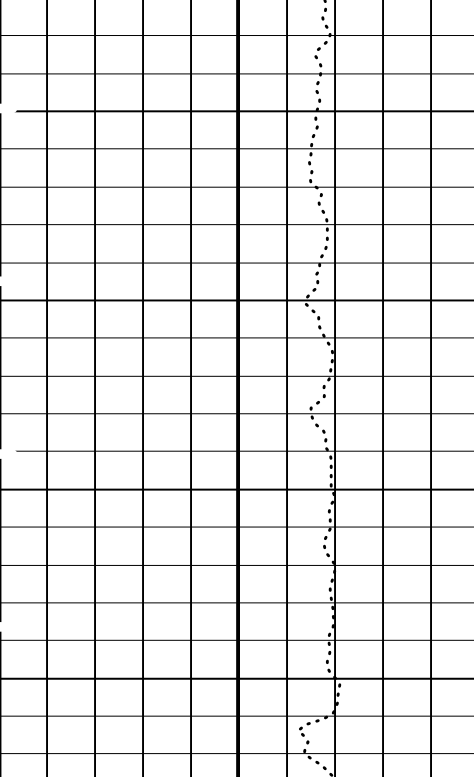




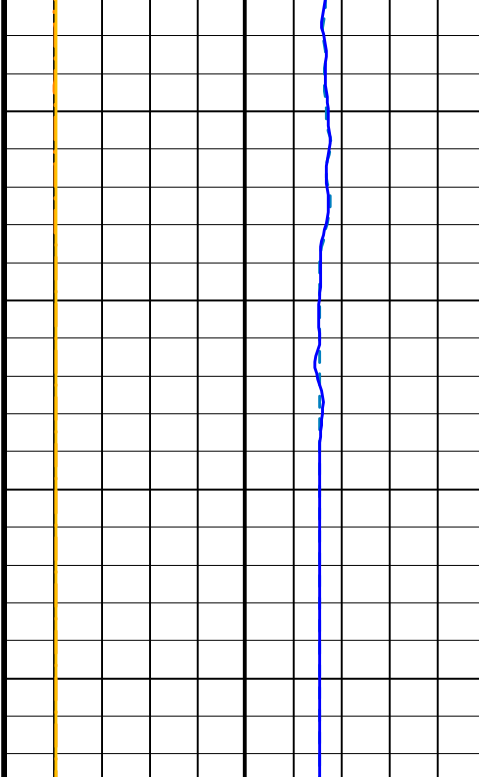




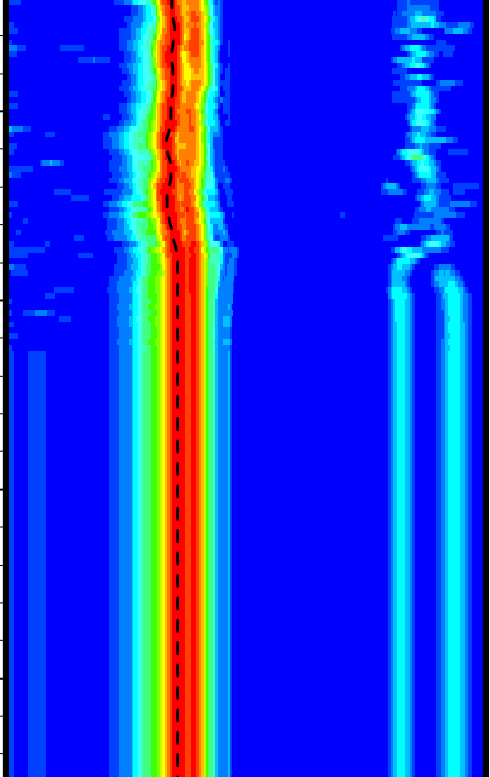




Tension (TENS)  
(LBF)



Peak Coherence / RA - P & S Comp  
(CHRP)



Delta-T Comp / RA - P & S (DTRP)  
(US/F)

Delta-T Comp / RA - P & S (DTRP)  
(US/F)

Min Amplitude Max  
Rec.Array P&S Slow Proj. CVDL (SPR4)  
(US/F)

Delta-T Comp - P & S (DT4P)  
(US/F)

Delta-T Shear / RA - P & S (DTRS)  
(US/F)

Delta-T Shear - P & S (DT4S)  
(US/F)

Peak Coherence / RA - P & S Shear  
(CHRS)

PIP SUMMARY

Time Mark Every 60 S

Parameters

| DLIS Name | Description   | Value      |
|-----------|---|------------|
| DSST-B:   | Dipole Shear Imager - B                                 |            |
| BHS       | Borehole Status   | OPEN       |
| CASF      | Label Casing Function - Monopole P&S                    | 50         |
| COLL      | Label Slowness Lower Limit - Monopole P&S Compressional | 40 US/F    |
| COUL      | Label Slowness Upper Limit - Monopole P&S Compressional | 240 US/F   |
| DDE4      | Digitizing Delay 4                                      | 0 US       |
| DDEX      | Digitizing Delay X                                      | 0 US       |
| DSI4      | Digitizer Sample Interval 4                             | 10 US      |
| DSIX      | Digitizer Sample Interval X                             | 40 US      |
| DTF       | Delta-T Fluid   | 189 US/F   |
| DWC4      | Digitizer Word Count 4                                  | 512        |
| DWCX      | Digitizer Word Count X                                  | 512        |
| FILG      | Label Fill Gap Control - Monopole P&S                   | COMP_SHEAR |
| LFC       | Label Formation Character - Monopole P&S                | DYNAMIC    |
| MCS       | Mean Casing Slowness                                    | 57 US/F    |
| MTXG      | Monopole Transmitter Geometry                           | 186 IN     |
| NWI4      | Number Waveform Items 4                                 | 8          |
| NWIX      | Number Waveform Items X                                 | 0          |
| RSMN      | Label Shear/Compressional Minimum Ratio - Monopole P&S  | 1.4        |

|      |  |            |      |
|------|--|------------|------|
| RSMX | Label Shear/Compressional Maximum Ratio - Monopole P&S                   | 2.12       |      |
| RX1G | Receiver 1 Geometry  | 294        | IN   |
| RX2G | Receiver 2 Geometry  | 300        | IN   |
| RX3G | Receiver 3 Geometry  | 306        | IN   |
| RX4G | Receiver 4 Geometry  | 312        | IN   |
| RX5G | Receiver 5 Geometry  | 318        | IN   |
| RX6G | Receiver 6 Geometry  | 324        | IN   |
| RX7G | Receiver 7 Geometry  | 330        | IN   |
| RX8G | Receiver 8 Geometry  | 336        | IN   |
| SAM4 | DSST Sonic Acquisition Mode 4 - High Frequency Monopole Mode for P&S     |            |      |
|      |  | MFD_EVEN   |      |
| SAMX | DSST Sonic Acquisition Mode X - Both Dipoles or Monopole Mode for Expert |            |      |
|      |  | OFF        |      |
| SAS4 | STC Sonic Array Status - Monopole P&S                                    | 255        |      |
| SBO4 | STC Search Band Offset - Monopole P&S                                    | 500        | US   |
| SBR4 | STC Baseline Removal - Monopole P&S                                      | ON         |      |
| SBW4 | STC Search Bandwidth - Monopole P&S                                      | 2000       | US   |
| SFC4 | STC Formation Character - Monopole P&S                                   | SELECTABLE |      |
| SFM4 | STC Filter - Monopole P&S  | B3-12K     |      |
| SHLL | Label Slowness Lower Limit - Monopole P&S Shear                          | 75         | US/F |
| SHUL | Label Slowness Upper Limit - Monopole P&S Shear                          | 240        | US/F |
| SLL4 | STC Slowness Lower Limit - Monopole P&S                                  | 40         | US/F |
| SST4 | STC Slowness Step - Monopole P&S   | 2          | US/F |
| SSW4 | STC Source Waveform - Monopole P&S                                       | WF_SAM4    |      |
| STLL | Label Slowness Lower Limit - Monopole Stoneley                           | 220        | US/F |
| STUL | Label Slowness Upper Limit - Monopole Stoneley                           | 1600       | US/F |
| SUL4 | STC Slowness Upper Limit - Monopole P&S                                  | 440        | US/F |
| SWD4 | STC Slowness Width - Monopole P&S  | 10         | US/F |
| TBF4 | STC Time for Baseline Fill - Monopole P&S                                | 300        | US   |
| TLL4 | STC Time Lower Limit - Monopole P&S                                      | 150        | US   |
| TST4 | STC Time Step - Monopole P&S   | 50         | US   |
| TUL4 | STC Time Upper Limit - Monopole P&S                                      | 5110       | US   |
| TWD4 | STC Time Width - Monopole P&S  | 1000       | US   |
| TWI4 | STC Integration Time Window - Monopole P&S                               | 500        | US   |
| TWSX | Transmitter Waveform Select X  | 0          |      |
|      | HNGS-BA: Hostile Natural Gamma Ray Sonde                                 |            |      |
| BHS  | Borehole Status  |            | OPEN |

Format: DSST\_P\_S\_VDL\_COLOR    Vertical Scale: 1:200    Graphics File Created: 19-Jun-2005 23:37

## OP System Version: 12C0-301

MCM

|          |          |        |          |
|----------|----------|--------|----------|
| GPIT-A/B | 12C0-301 | DTA-A  | 12C0-301 |
| DSST-B   | 12C0-301 | HNGC-B | 12C0-301 |
| HNGS-BA  | 12C0-301 | DTC-H  | 12C0-301 |

## Output DLIS Files

DEFAULT    DSI\_NGS\_016LUP    FN:16    PRODUCER    19-Jun-2005 23:37

Company: Lamont Doherty

**Schlumberger**

Well: IODP EXP 308 Site U1324A

Field: URSA Basin

Country: USA

Ocean: Gulf Of Mexico

DSI-GR