

2850

2375

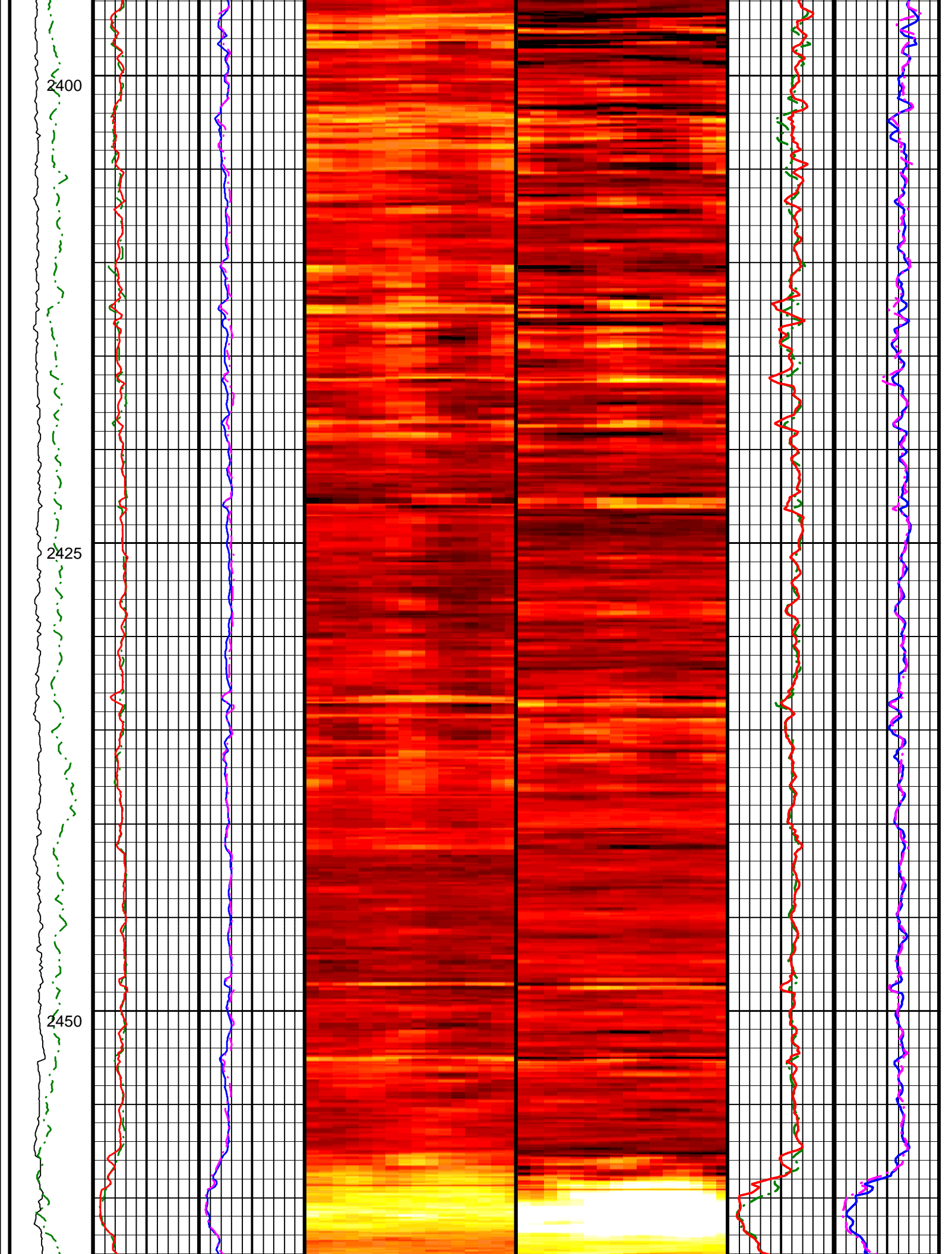
CRFM
BRMA

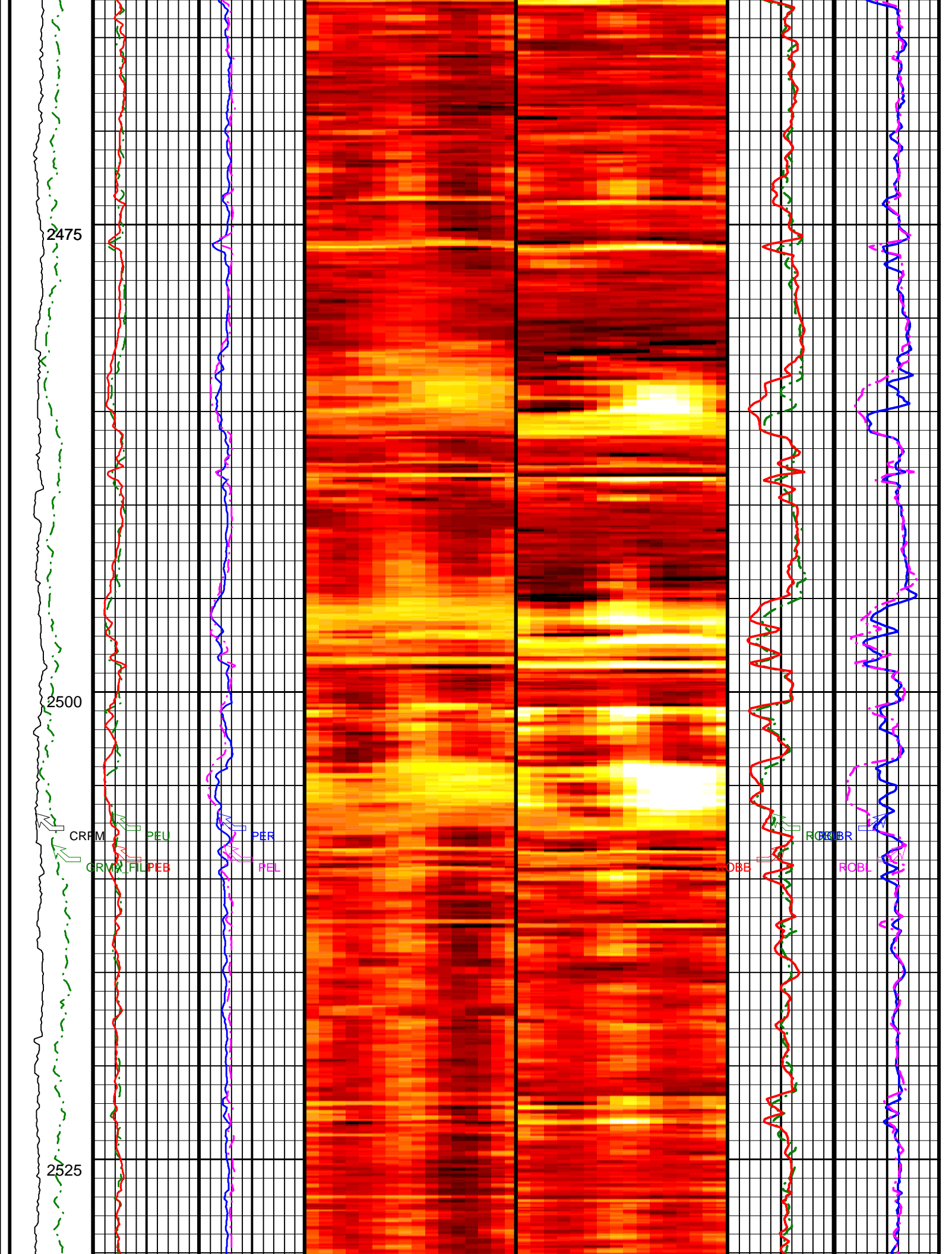
PEU
FIL
PEB

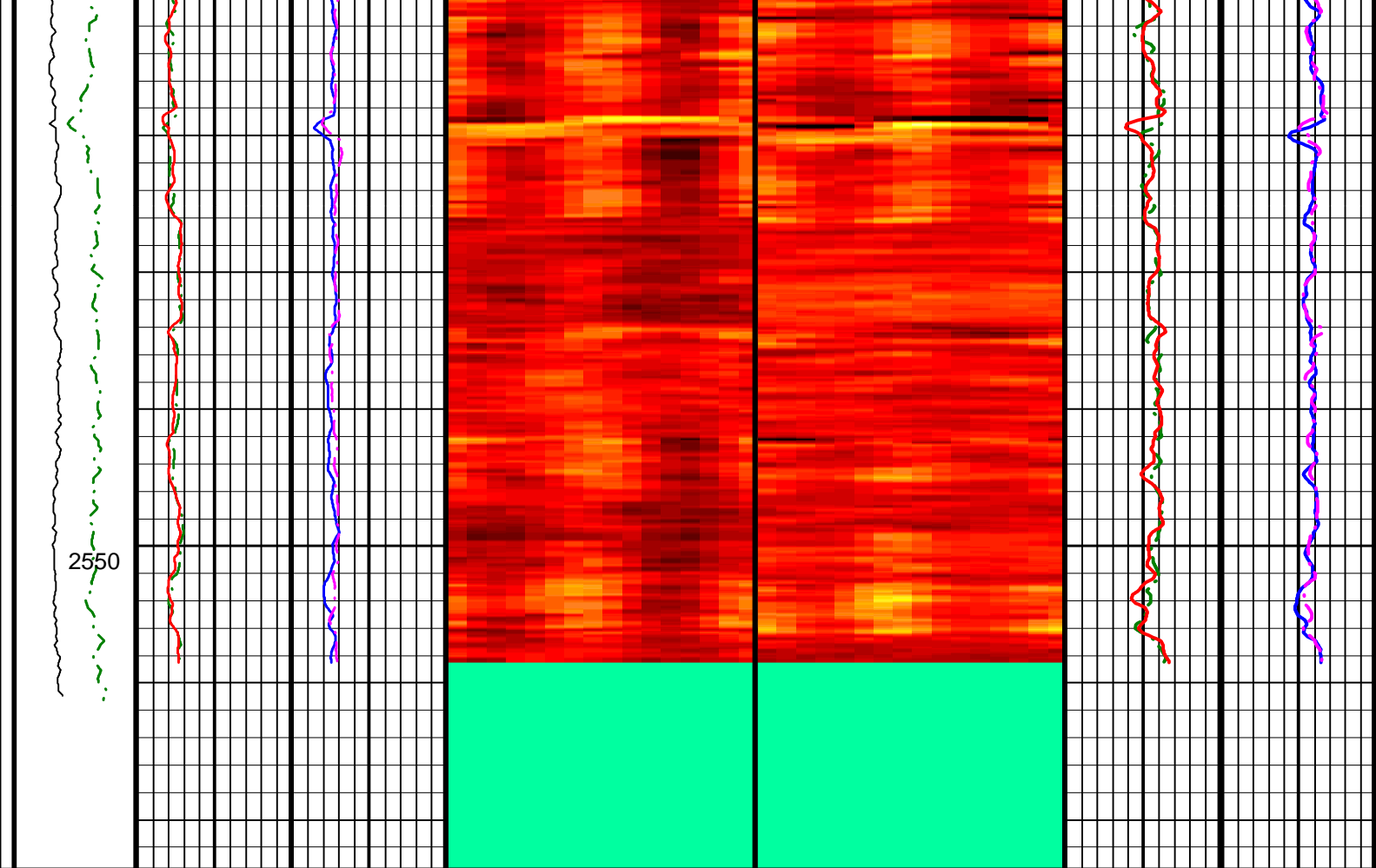
PER
PEL

ROBU
ROBB

ROBR
ROBL







2550

<p>Collar Rotational Speed (CRPM) (RPM)</p> <p>0 200</p>	<p>Photoelectric Factor, Up (PEU)</p> <p>0 (---) 10</p>	<p>Photoelectric Factor, Right (PER)</p> <p>0 (---) 10</p>	<p>Absent 0.256 0.598 0.939 1.280 1.622 1.963 2.305 2.646 2.988 3.329</p> <p>ADN Photoelectric Factor (16-Sector) Image Oriented Top of Hole (U,R,B,L,U) (PESI) (---)</p>	<p>Absent 1.370 1.462 1.555 1.648 1.740 1.833 1.926 2.018 2.111 2.204</p> <p>Bulk Density (16-Sector) Image Oriented Top of Hole (U,R,B,L,U) (ROSI) (G/C3)</p>	<p>Bulk Density, Up (ROBU) (G/C3)</p> <p>1 2.65</p>	<p>Bulk Density, Right (ROBR) (G/C3)</p> <p>1 2.65</p>
<p>DVDM Calibrated, Filtered Gamma Ray (GRMA_FILT) (GAPI)</p> <p>0 150</p>	<p>Photoelectric Factor, Bottom (PEB)</p> <p>0 (---) 10</p>	<p>Photoelectric Factor, Left (PEL)</p> <p>0 (---) 10</p>			<p>Bulk Density, Bottom (ROBB) (G/C3)</p> <p>1 2.65</p>	<p>Bulk Density, Left (ROBL) (G/C3)</p> <p>1 2.65</p>

IDEAL Version: ID10_2B_08
IDF

ADN id10_2c_01

Density Dynamic Image

IDEAL Version: ID10_2B_08

Thermal Neutron porosity (TNP) (PU)

100 0

Image Derived Density Correction (IDDR) (G/C3)

-0.8 0.2

Image Derived Density (IDRO) (G/C3)

1 2.65

Image Derived Photoelectric Factor (IDPE) (----)

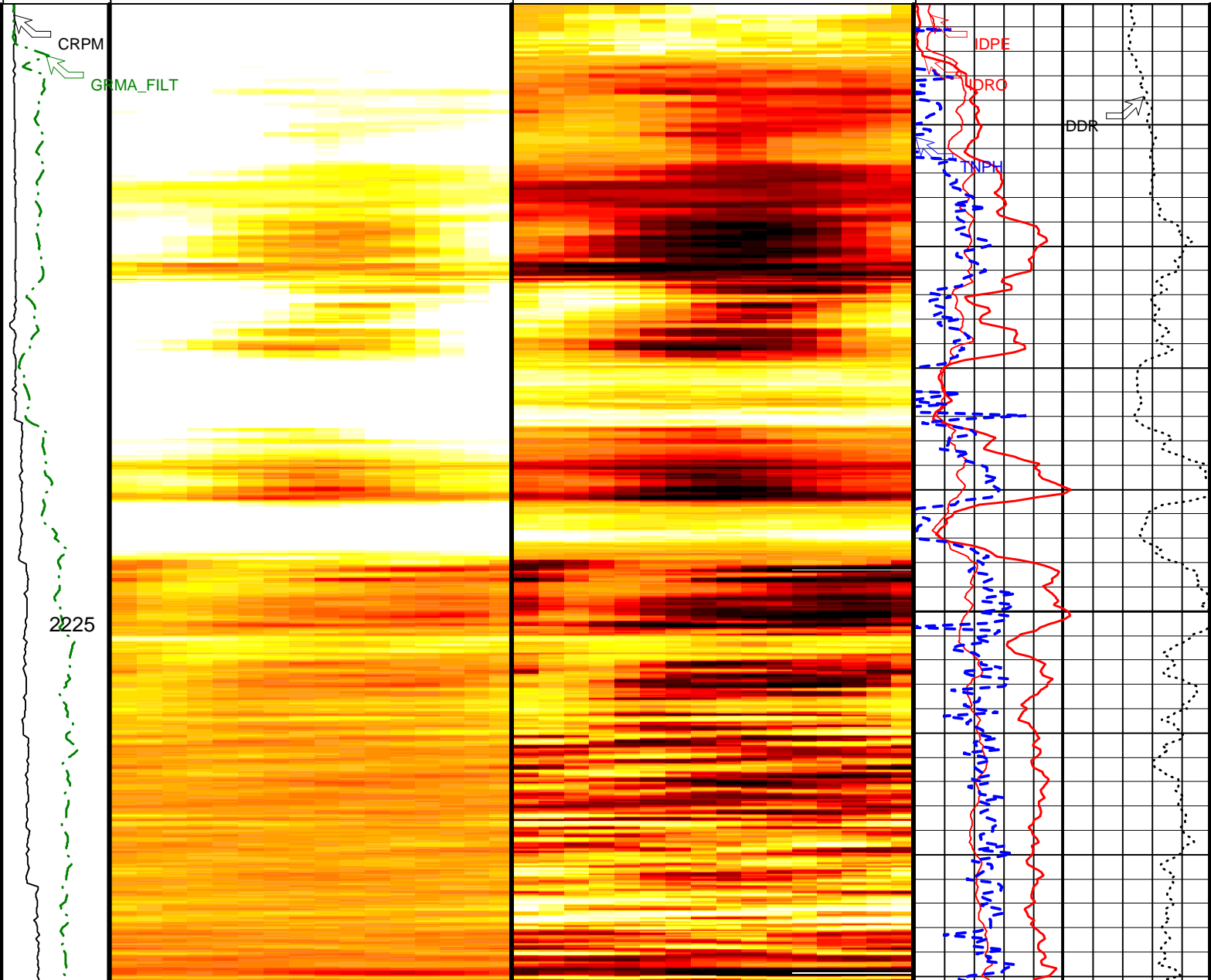
0 10

DVDM Calibrated, Filtered Gamma Ray (GRMA_FILT) (GAPI) 0 150

Collar Rotational Speed (CRPM) (RPM) 0 200

DVDM Bulk Density (16-Sector) Image Oriented Top of Hole (U,R,B,L,U) (ROSI) (G/C3)

DVDM Bulk Density (16-Sector) Dynamic Image Oriented TOH (U,R,B,L,U) (ROSI_DYN) (----)

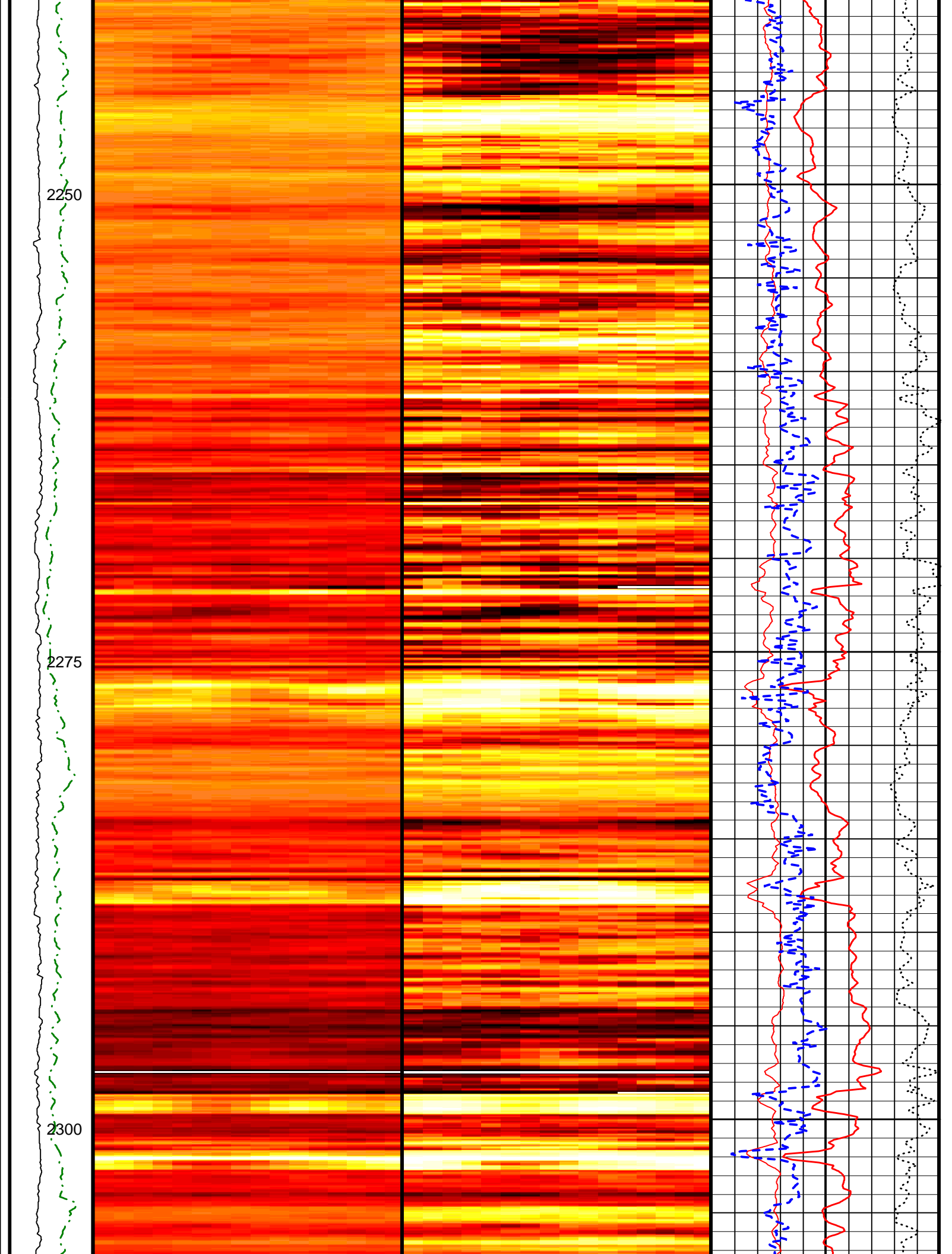


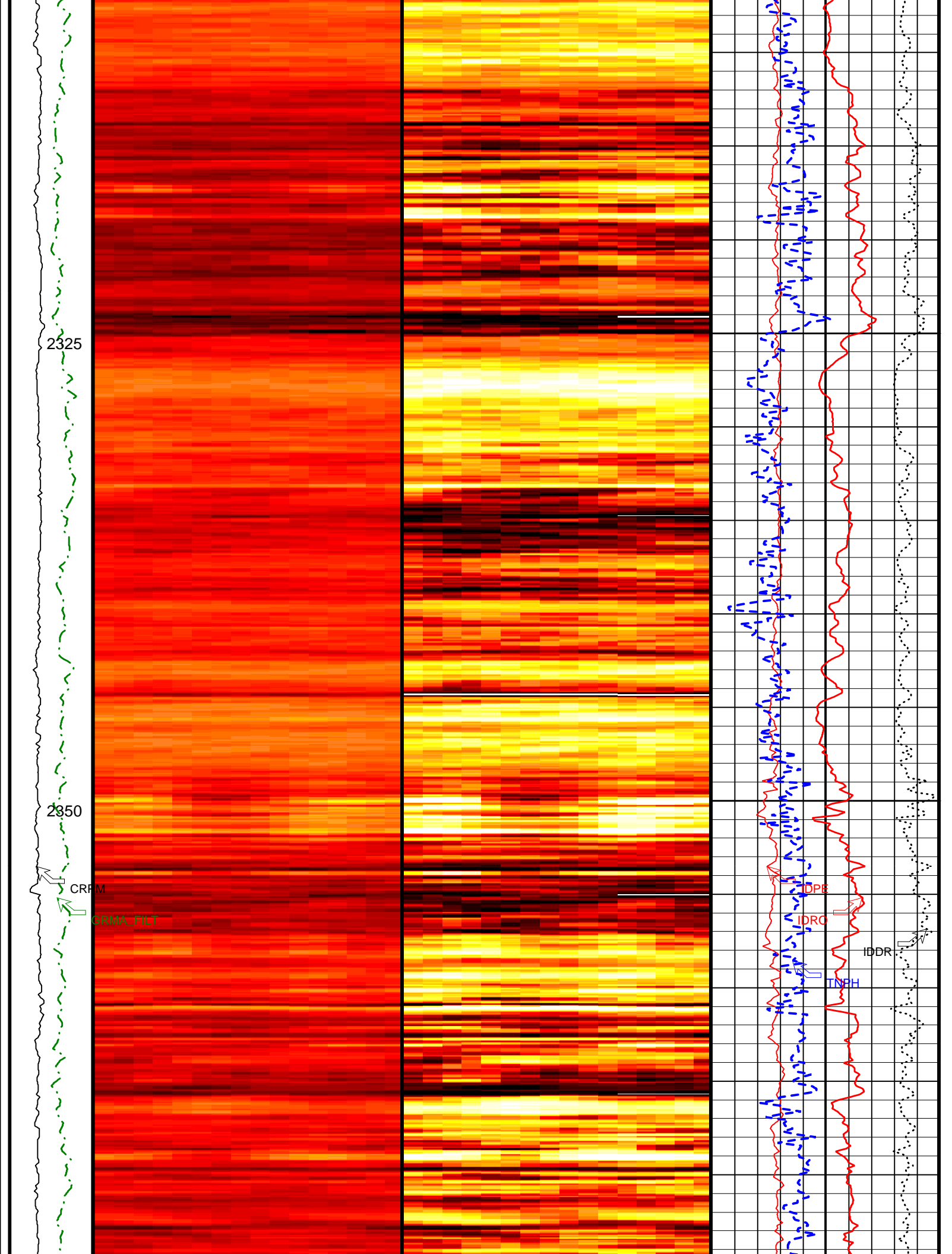
2225

2250

2275

2300

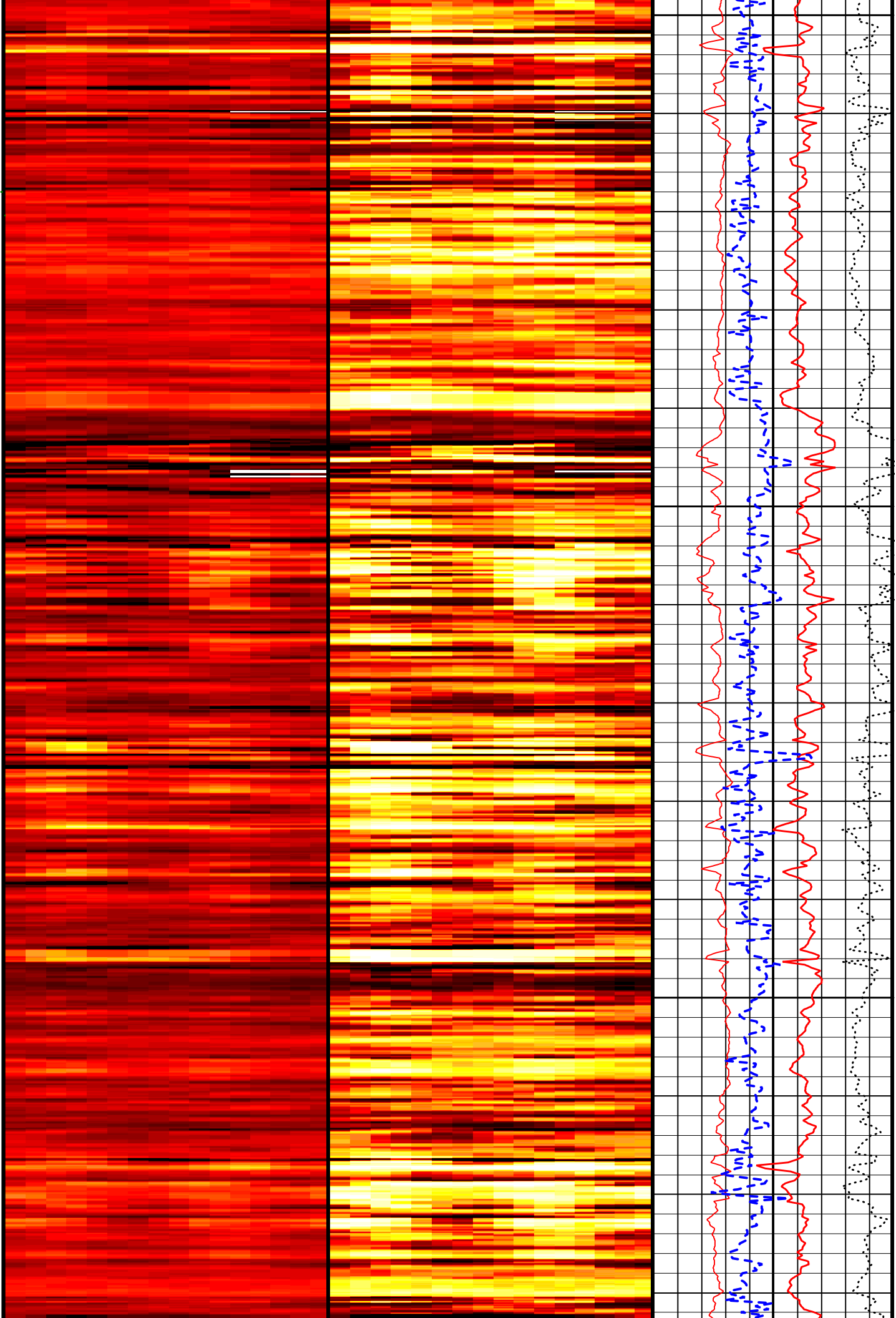


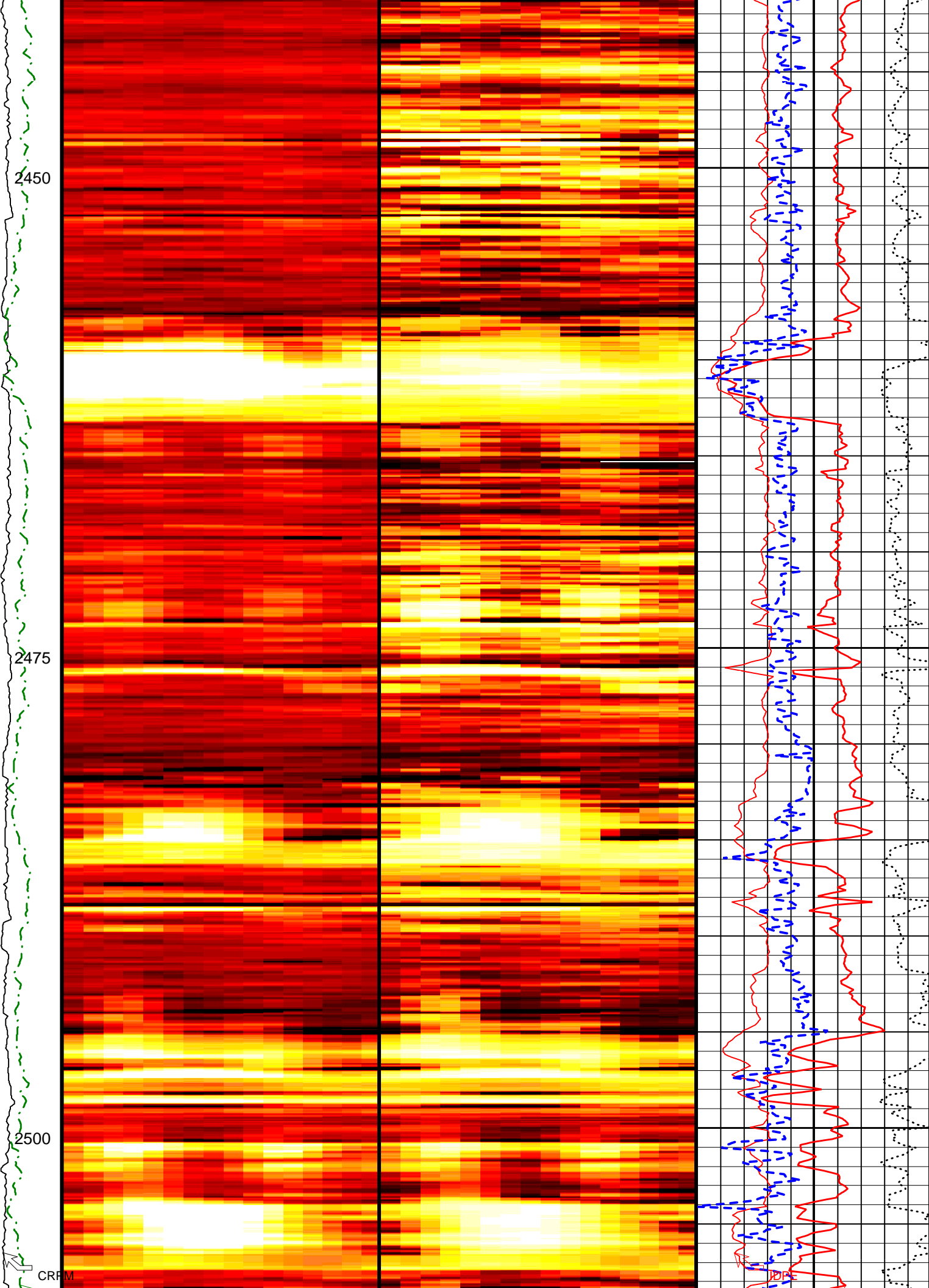


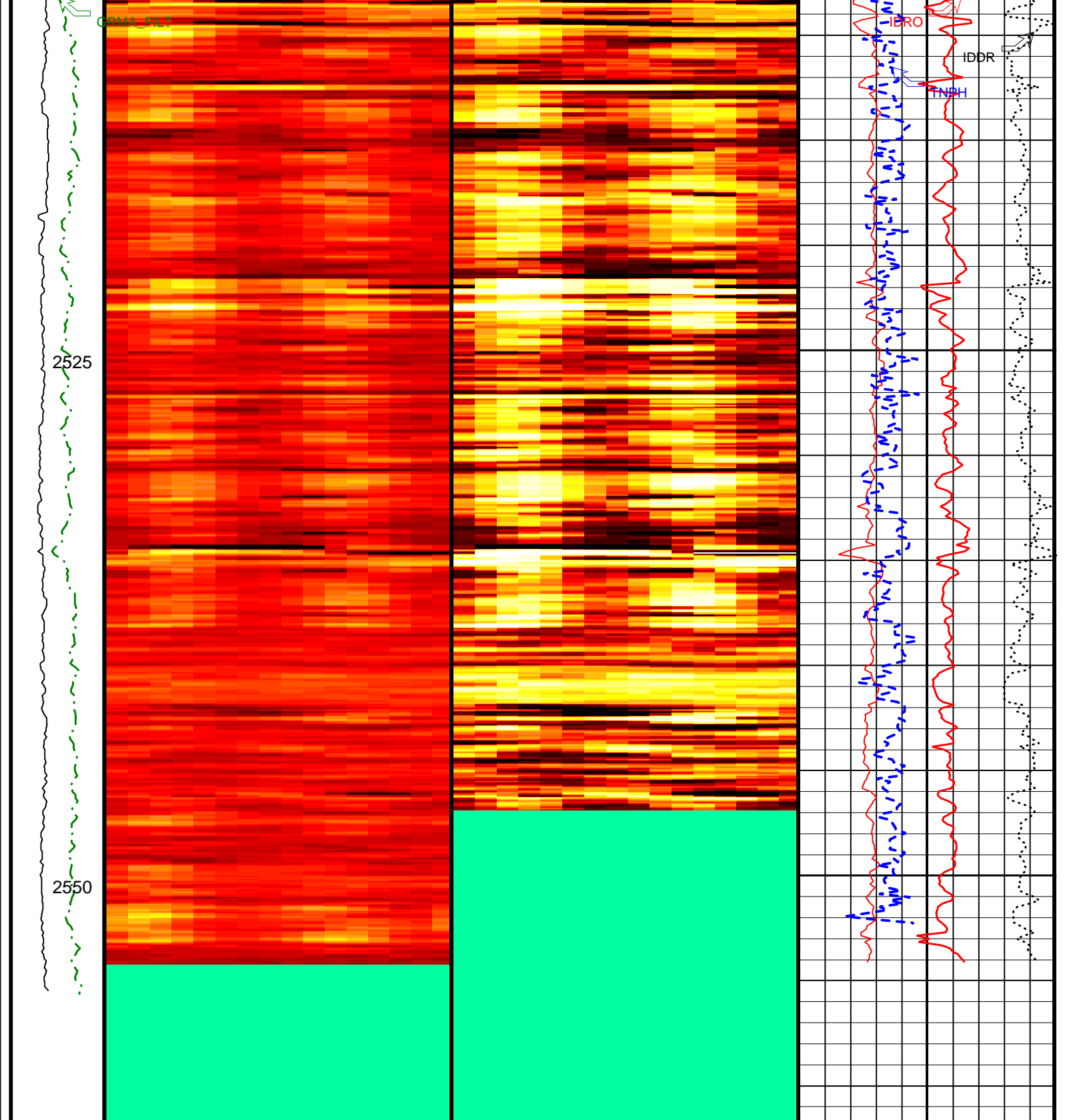
2375

2400

2425







2525

2550

IDRO
IDDR

Collar
Rotational
Speed
(CRPM)
(RPM)
0 200

Absent 1.370 1.462 1.555 1.648 1.740 1.833 1.926 2.018 2.111 2.204
 DVDM Bulk Density (16-Sector) Image Oriented Top of Hole (U,R,B,L,U) (ROSI) (G/C3)

DVDM Bulk Density (16-Sector) Dynamic Image Oriented TOH (U,R,B,L,U) (ROSI_DYN) (----)

Image Derived Photoelectric Factor (IDPE)
0 (----) 10

DVDM
Calibrated,
Filtered
Gamma
Ray
(GRMA_FILT)
(GAPI)

Image Derived Density (IDRO)
1 (G/C3) 2.65

0 150

Image Derived Density Correction (IDDR)		
-0.8	(G/C3)	0.2
Thermal Neutron porosity (TNPH)		
100	(PU)	0

IDEAL Version: ID10_2B_08
IDF

ADN id10_2c_01

Company: Lamont-Doherty Borehole Research

Well: IODP Expedition 311 CAS-02C

Field: Cascadia Margin

Rig: JOIDES Resolution

State: Pacific Ocean

EcoScope Density Neutron - Image
1:240 Measured Depth
Recorded Mode Log

Schlumberger