

Company: Lamont-Doherty Borehole Reseach

Field Print

Well: CAS-02C

Field: Vancouver Island

Rig: JOIDES Resolution State: Pacific Ocean

## EcoScope Service 1:240 Measured Depth Recorded Mode, Composite Log

Rig: JOIDES Resolution		Location: Vancouver Island		Company: Lamont-Doherty Borehole Reseach	
Well: CAS-02C		Location		Elev.: 0 m	
Depth logged: 2212 m To 2561 m		Total depth: 2562 m		K.B. 10.06 m	
Date logged: 20-Sep-05 To 21-Sep-05		Spud date: 20-Sep-2005		G.L. -2202 m	
Mag decl: 18.83 deg.		Runs: 1 To 1		D.F. 9.76 m	
Mag dip: 69.17 deg.		Permanent datum: MEAN SEA LEVEL		Elev.: 0 m	
Other services: GeoVISION		Log measured from: Kelly Bushing		10.06 m above Perm. datum	
API serial no. NAD 27 UTM Zone 10 N		Depth reference: Kelly Bushing		Longitude Latitude	
40012416		W 126.98322		N 48.64480	
Bore hole record		Casing record			

Hole size	from	to	Size	Density	from	to
9.875 in.	2212 m	2562 m				
Mud record						
Type	from	to	Min	Max	from	to
Seawater	2212 m	2562 m				
Borehole deviation record						
Surface equipment						
Unit	TWIS	IDEAL Wis	ID10_2C_01			
Depth system	Geolograph	SPM	hspm10_1c_05			
		LWD	See Remarks			
		MWD	9.0_C03			
Software record						

### IDEAL Version: ID10\_2C\_01 IDF

ECO6 id10\_2c\_01

Format: 5 MD ADN/ARC Vertical Scale: 1:240

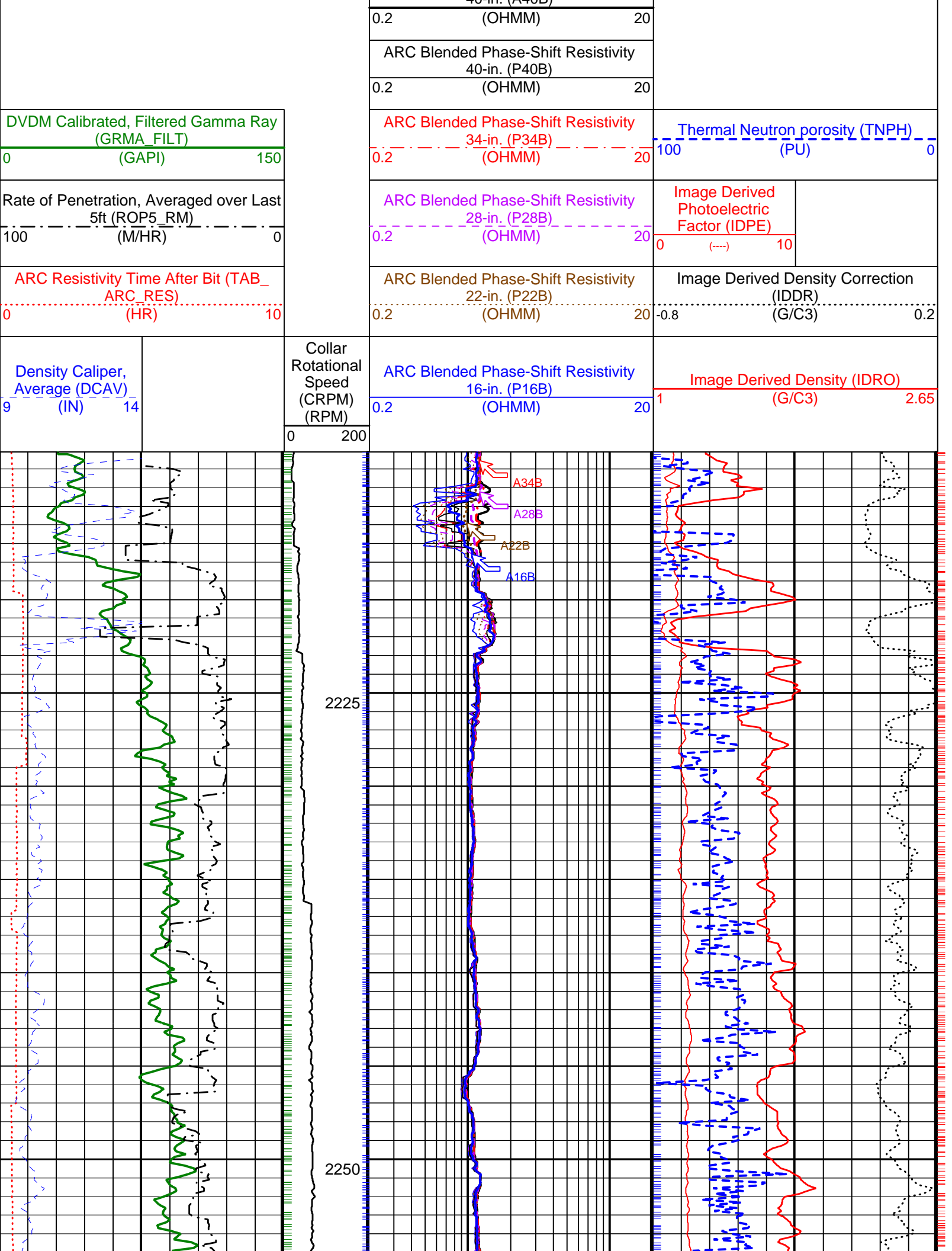
Graphics File Created: 22-Sep-2005 12:45

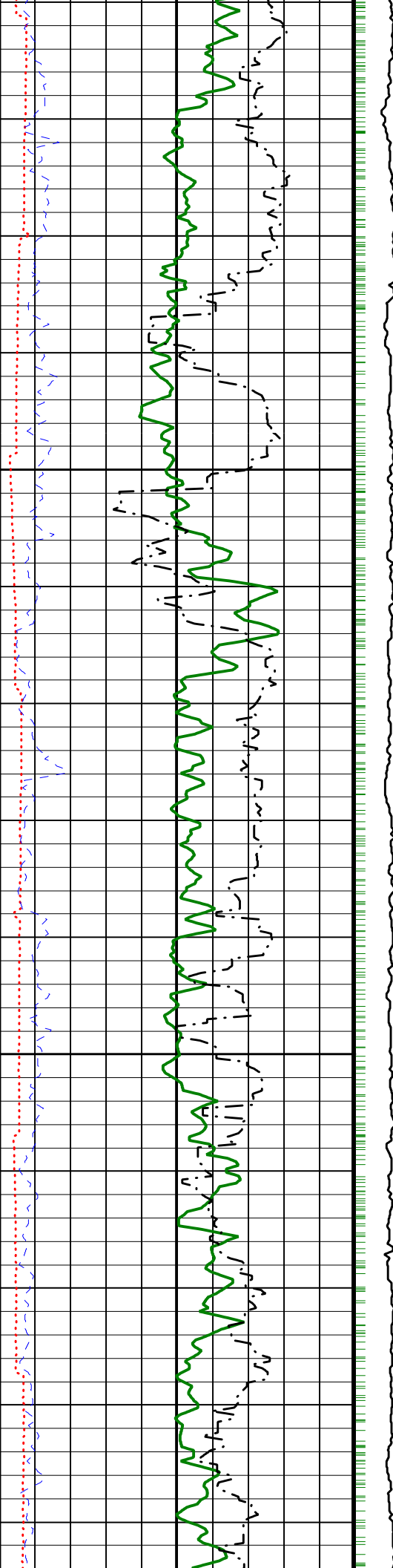
#### PIP SUMMARY

Density Ticks, 0.1-ft

- ✦ ARC Resistivity Samples
- Neutron Ticks, 0.1 ft ✦
- ✦ DVDM Gamma Ray Samples

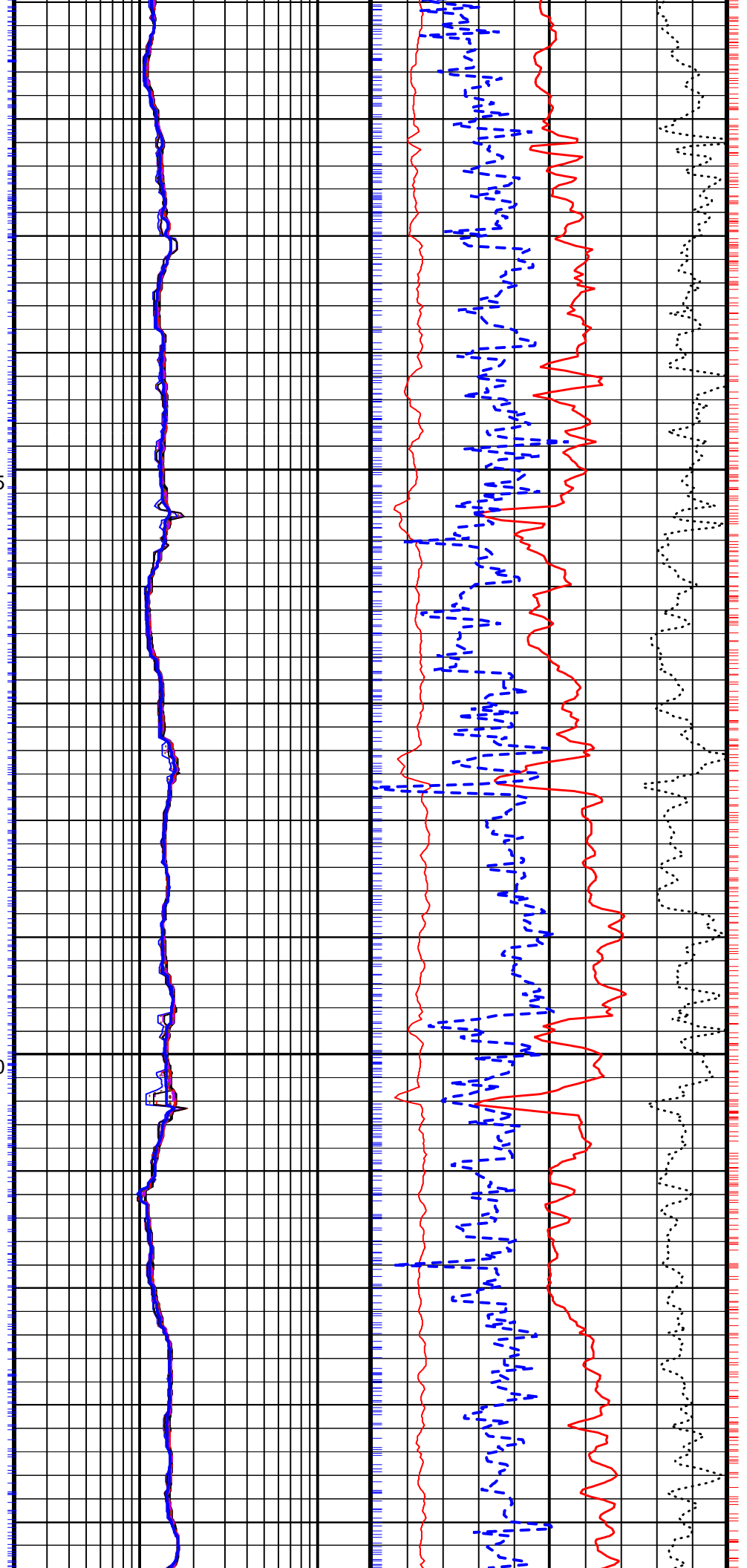
ARC Blended Attenuation Resistivity 16-in. (A16B)		
0.2	(OHMM)	20
ARC Blended Attenuation Resistivity 22-in. (A22B)		
0.2	(OHMM)	20
ARC Blended Attenuation Resistivity 28-in. (A28B)		
0.2	(OHMM)	20
ARC Blended Attenuation Resistivity 34-in. (A34B)		
0.2	(OHMM)	20
ARC Blended Attenuation Resistivity 40-in. (A40B)		

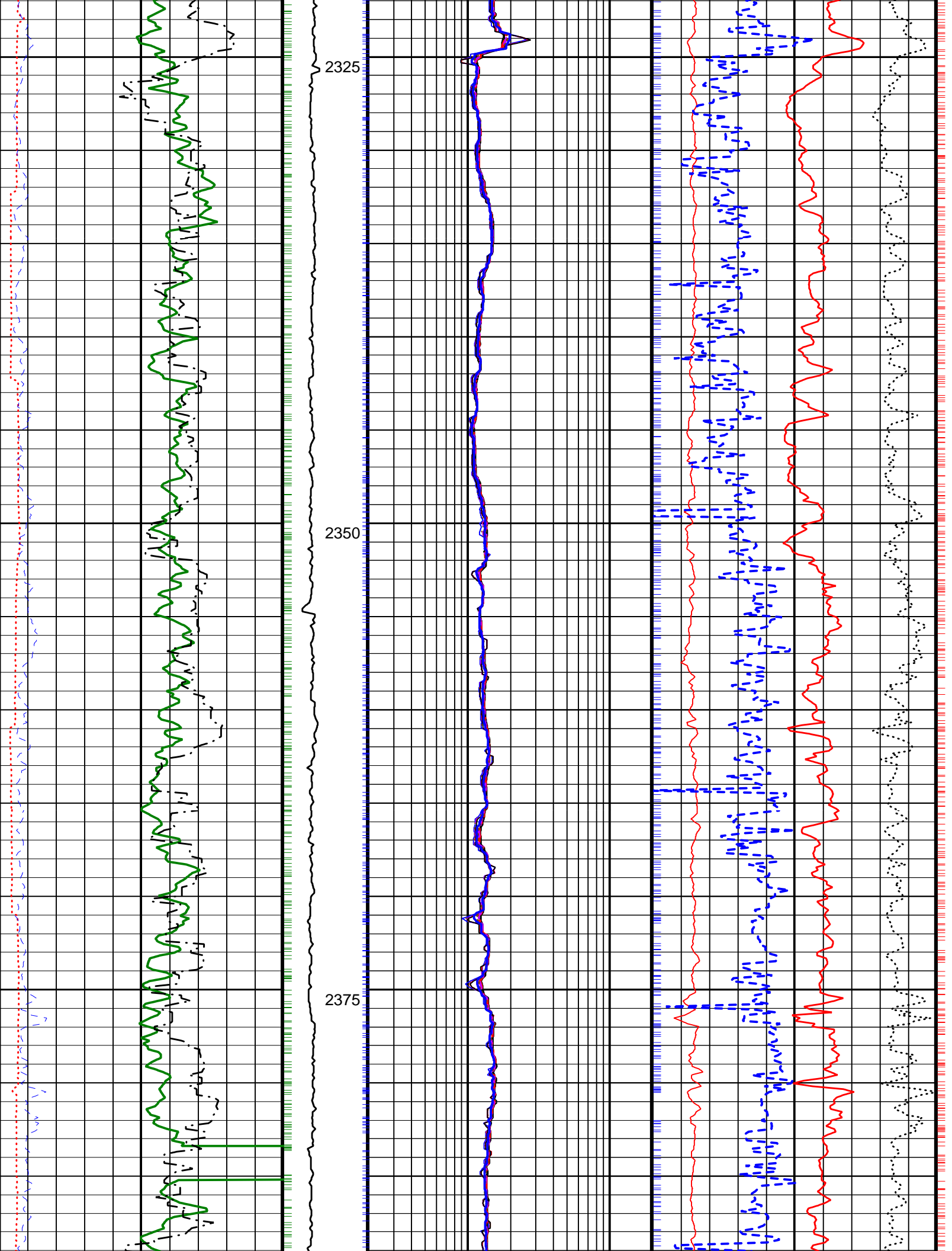


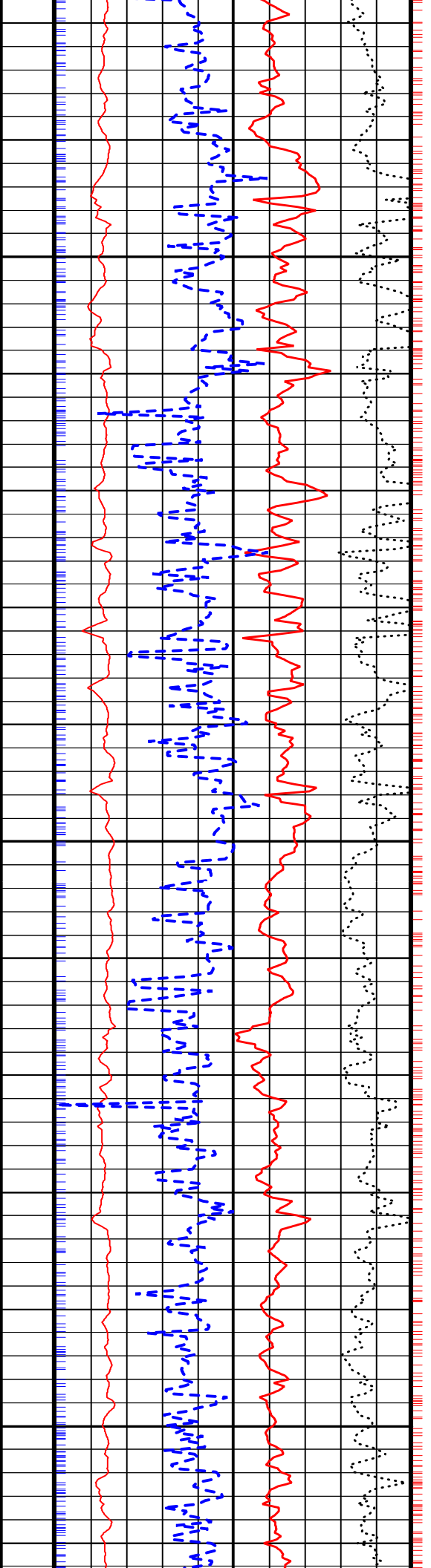
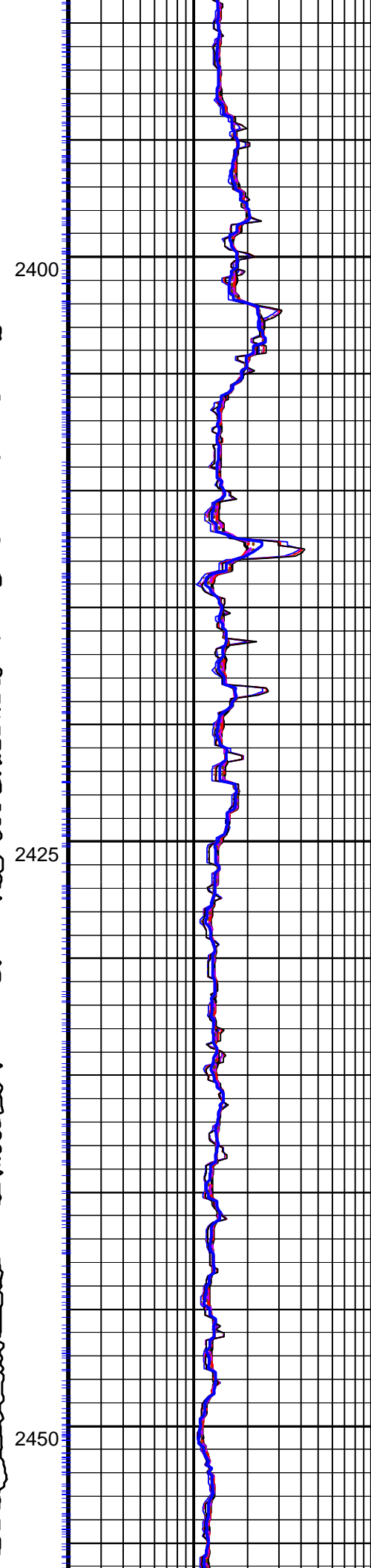
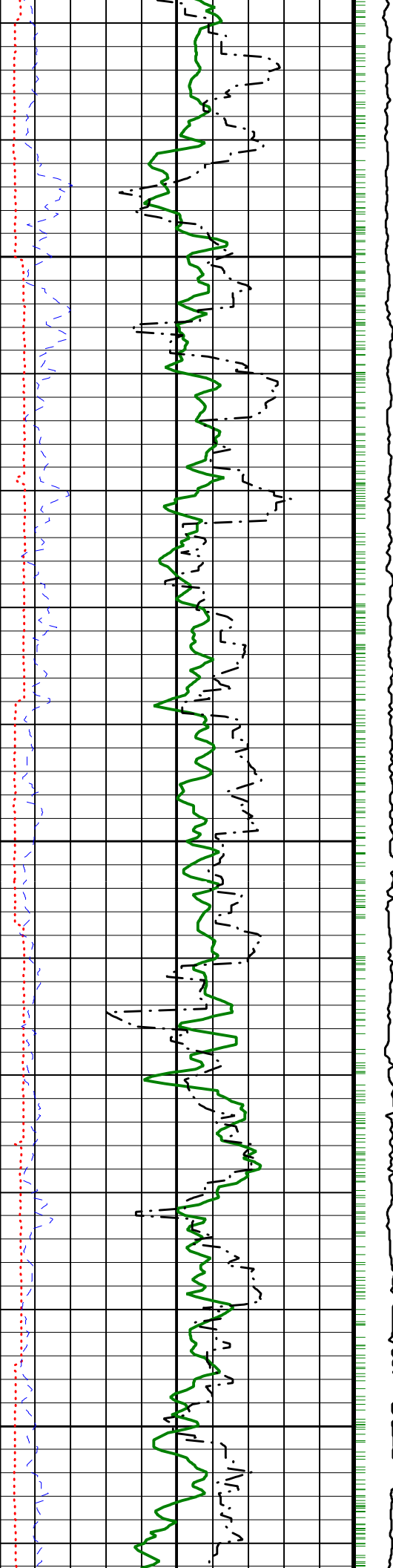


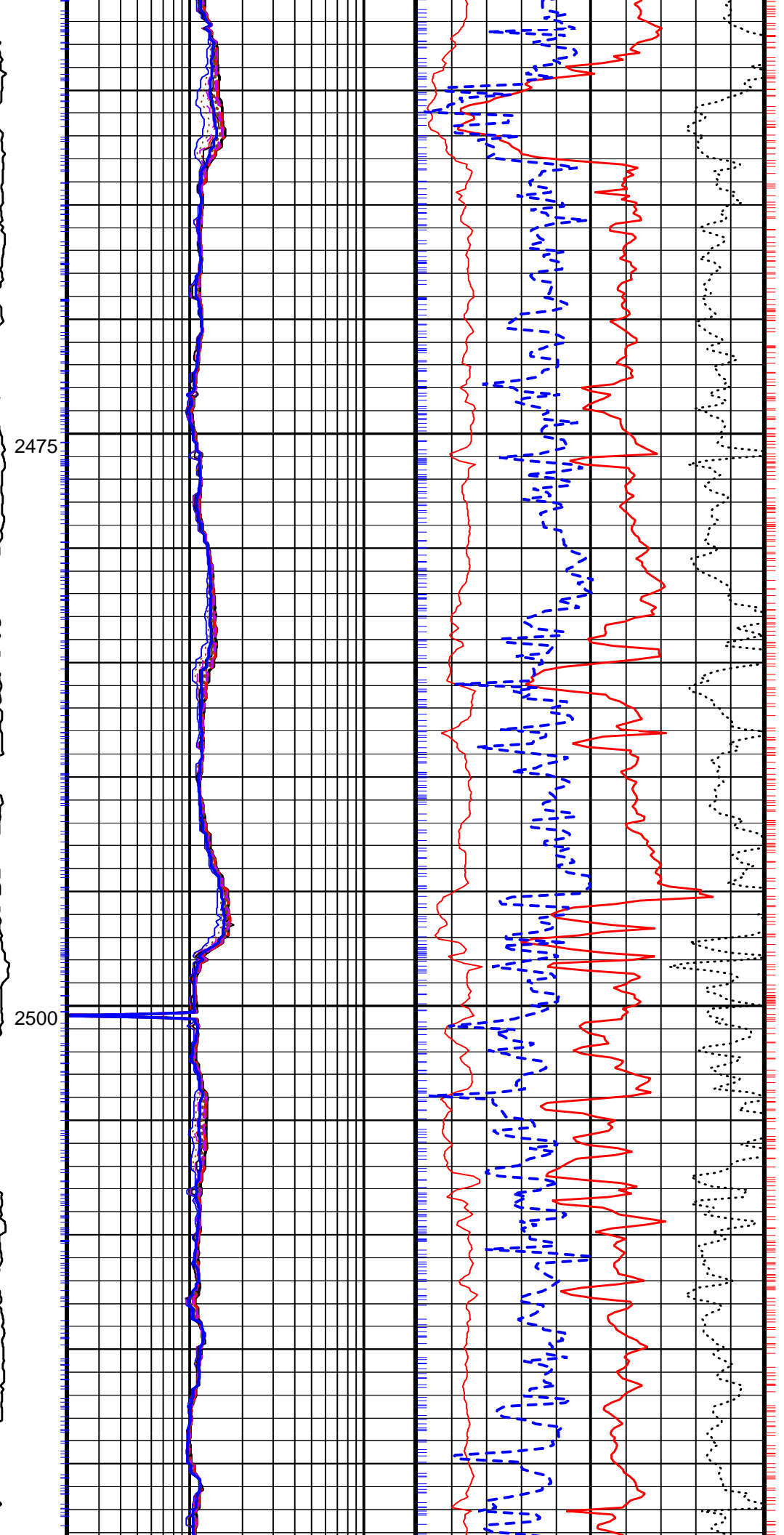
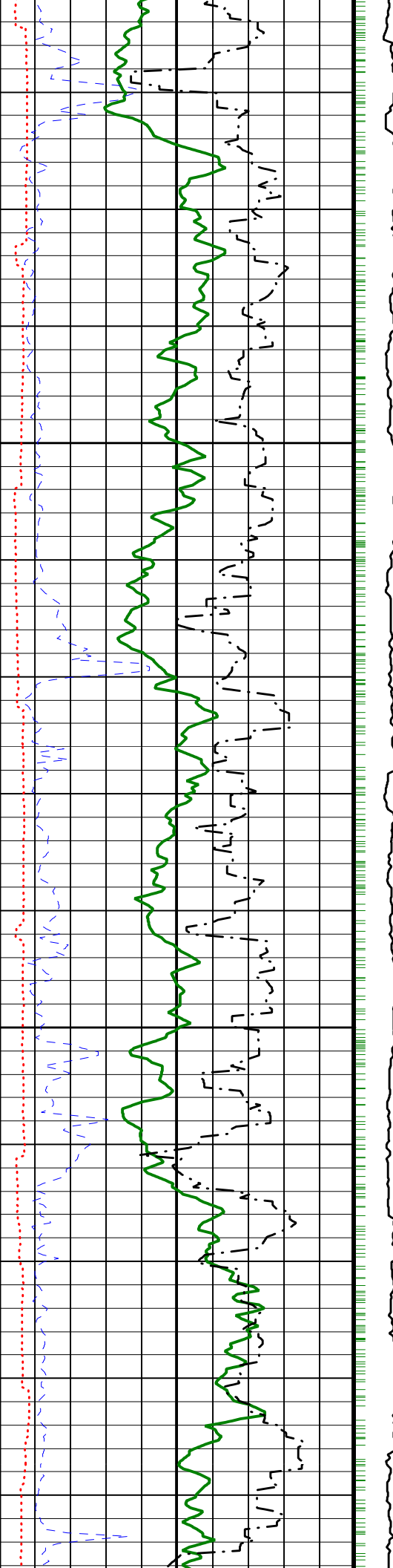
2275

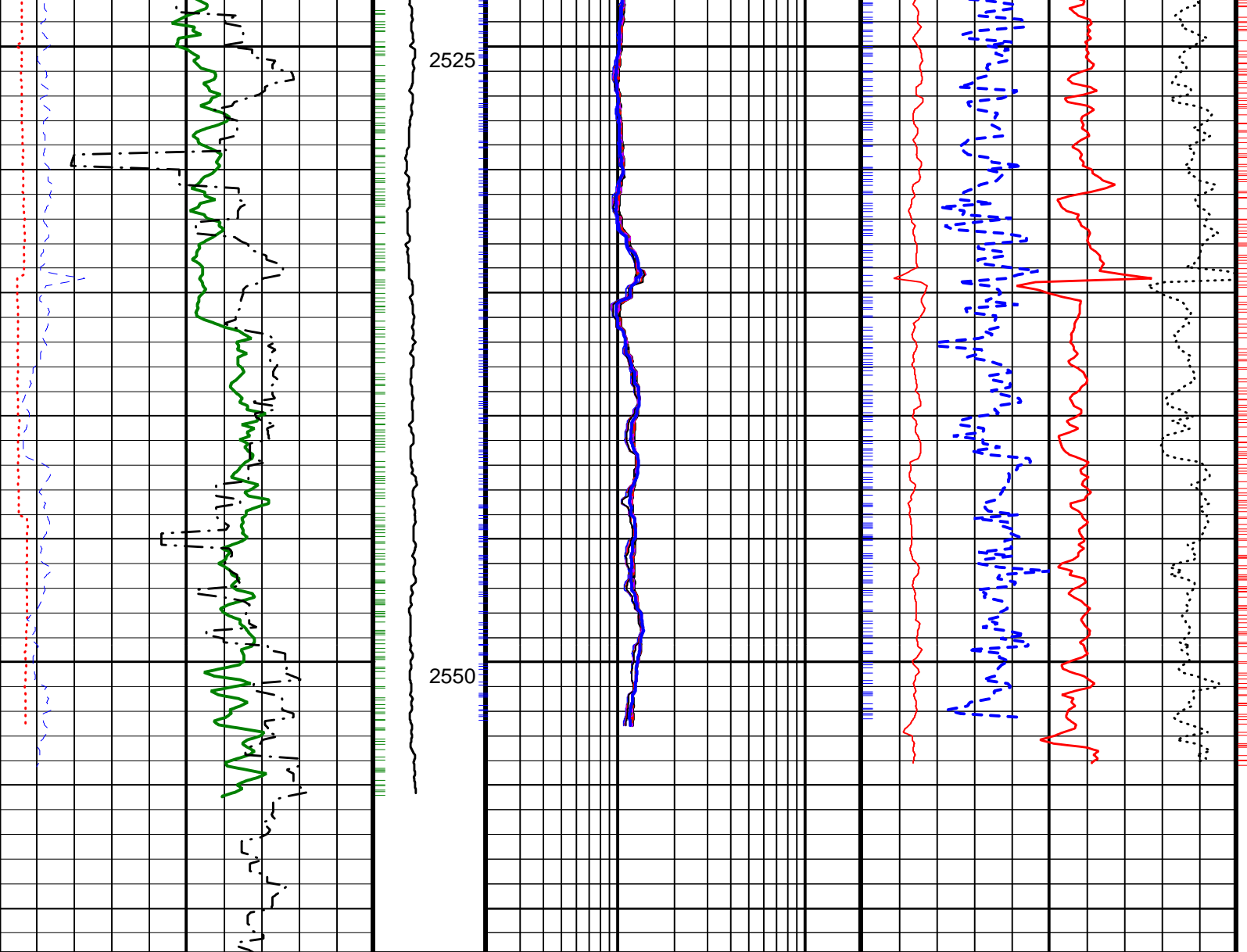
2300











Density Caliper, Average (DCAV) (IN)		Collar Rotational Speed (CRPM) (RPM)	ARC Blended Phase-Shift Resistivity 16-in. (P16B) (OHMM)	Image Derived Density (IDRO) (G/C3)
9	14	0	20	1

ARC Resistivity Time After Bit (TAB_ ARC_RES) (HR)		ARC Blended Phase-Shift Resistivity 22-in. (P22B) (OHMM)	Image Derived Density Correction (IDDR) (G/C3)
0	10	20	0.2

Rate of Penetration, Averaged over Last 5ft (ROP5_RM) (M/HR)		ARC Blended Phase-Shift Resistivity 28-in. (P28B) (OHMM)	Image Derived Photoelectric Factor (IDPE) (----)
100	0	20	0

DVDM Calibrated, Filtered Gamma Ray (GRMA_FILT) (GAPI)		ARC Blended Phase-Shift Resistivity 34-in. (P34B) (OHMM)	Thermal Neutron porosity (TNPH) (PU)
0	150	20	100

		ARC Blended Phase-Shift Resistivity 40-in. (P40B) (OHMM)	
		20	

		ARC Blended Attenuation Resistivity 40-in. (A40B) (OHMM)	
		20	

		ARC Blended Attenuation Resistivity 34-in. (A34B) (OHMM)	
		20	

0.2	(OHMM)	20
ARC Blended Attenuation Resistivity 28-in. (A28B)		
0.2	(OHMM)	20
ARC Blended Attenuation Resistivity 22-in. (A22B)		
0.2	(OHMM)	20
ARC Blended Attenuation Resistivity 16-in. (A16B)		
0.2	(OHMM)	20

PIP SUMMARY

Density Ticks, 0.1-ft  
 + ARC Resistivity Samples  
 Neutron Ticks, 0.1 ft  
 + DVDM Gamma Ray Samples

IDEAL Version: ID10\_2C\_01  
IDF

ECO6 id10\_2c\_01

**Company:** Lamont-Doherty Borehole Reseach  
**Well:** CAS-02C  
**Field:** Vancouver Island  
**Rig:** JOIDES Resolution Field Print  
**State:** Pacific Ocean  
 EcoScope Service  
 1:240 Measured Depth  
 Recorded Mode, Composite Log

**Schlumberger**