

Company: Lamont-Doherty Borehole Research

Well: IODP Expedition 311 CAS-02C

Field: Cascadia Margin

Rig: JOIDES Resolution State: Pacific Ocean

GeoVISION Resistivity - Image 1:240 Measured Depth Recorded Mode, Composite Log

Location		Elevation	
Total depth:	2562 m	K.B.	10.06 m
Spud date:	20-Sep-2005	G.L.	-2202 m
Runs:	1 To 1	D.F.	9.60 m
Permanent datum:	MEAN SEA LEVEL	Elev.:	0 m
Log measured from:	Kelly Bushing	10.06 m above Perm. datum	
Depth reference:	Driller's Depth		
Service Order no.	NAD 27	Longitude	Latitude
40012416	UTM Zone 10 N	W 126.98322	N 48.64480

Depth logged:	2212 m	To	2561 m	Mag decl:	18.83 deg.	Other services:
Date logged:	20-Sep-05	To	21-Sep-05	Mag dip:	69.17 deg.	EcoScope, sonicVISION, provision

Bore hole record		Casing record				
Hole size	from 9.875 in.	to 2562 m	Size	Density	from	to
Type	Mud record	from 2212 m	to 2562 m	Min	Max	Borehole deviation record from to
Seawater						

Surface equipment		Software record	
Unit	TWIS	IDEAL Wis	ID10_2C_01
Depth system	Geolograph	SPM	hspm10_1c_05
		LWD	See Remarks
		MWD	9.0_C03

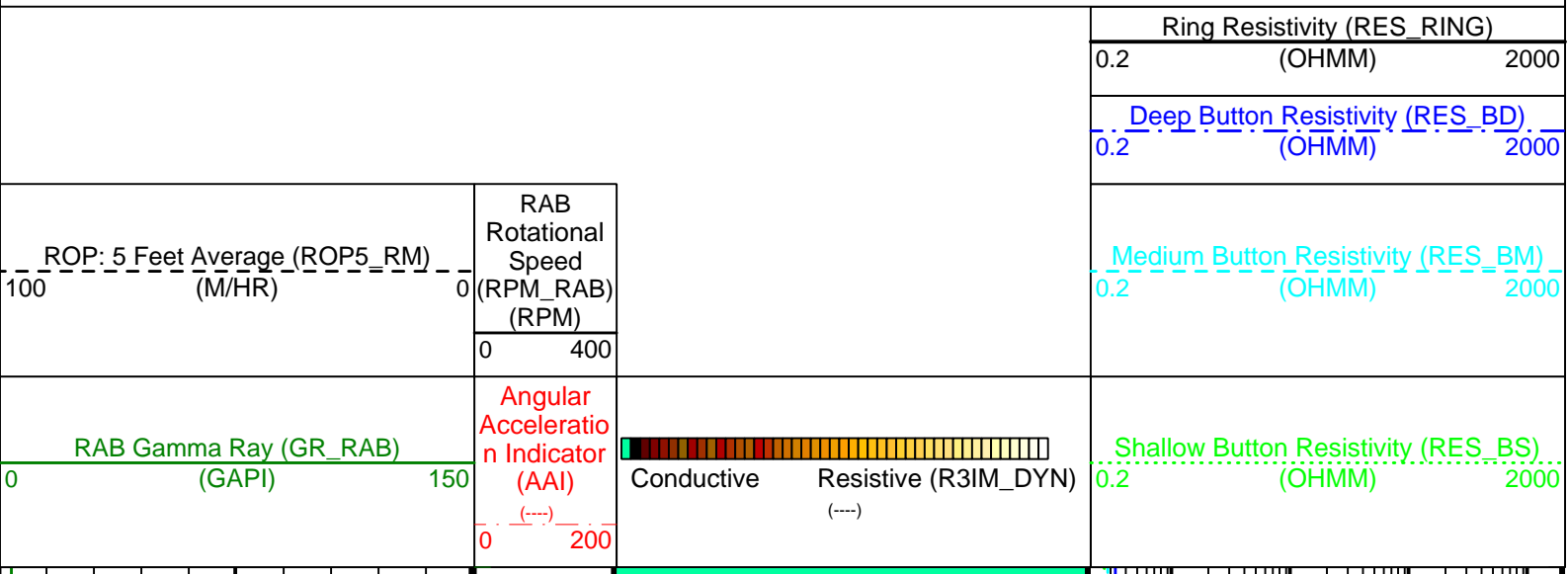
IDEAL Version: ID10_2B_08 IDF

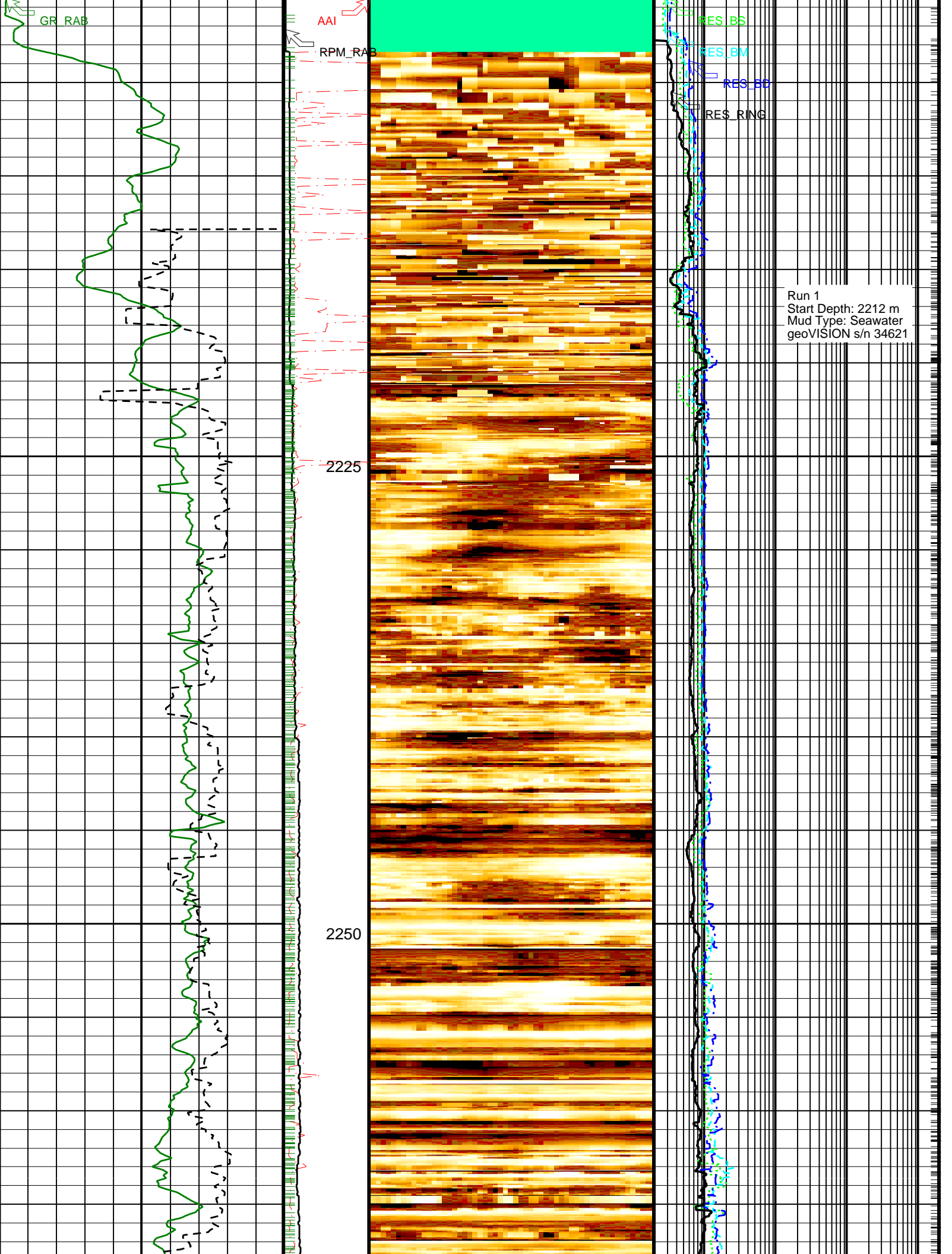
ADN id10_2c_01
Format: 5 MD GVR DEPTH IMAGE Vertical Scale: 1:240 Graphics File Created: 02-Oct-2005 17:04

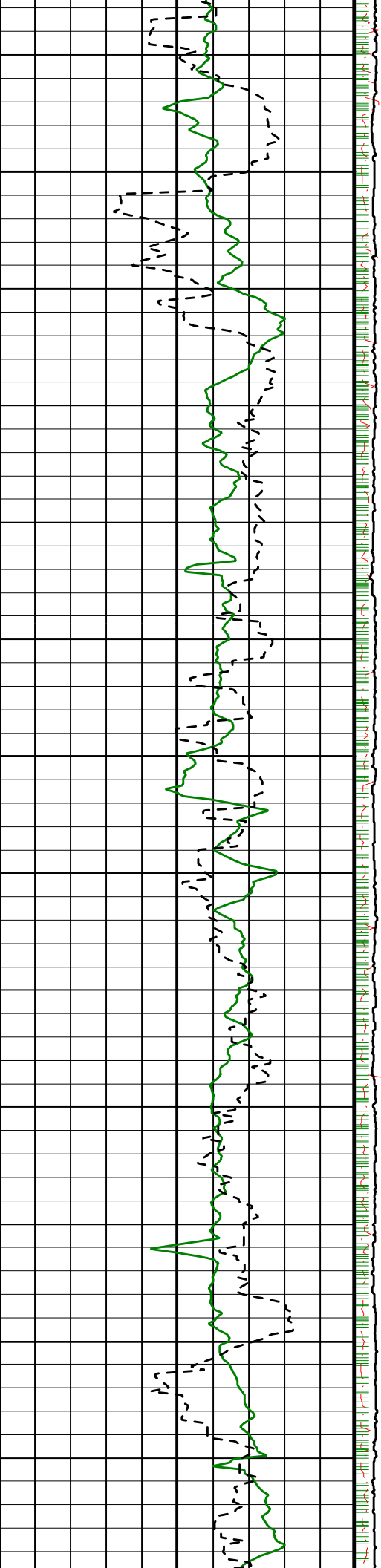
PIP SUMMARY

Ring Samples

Gamma Ray Samples



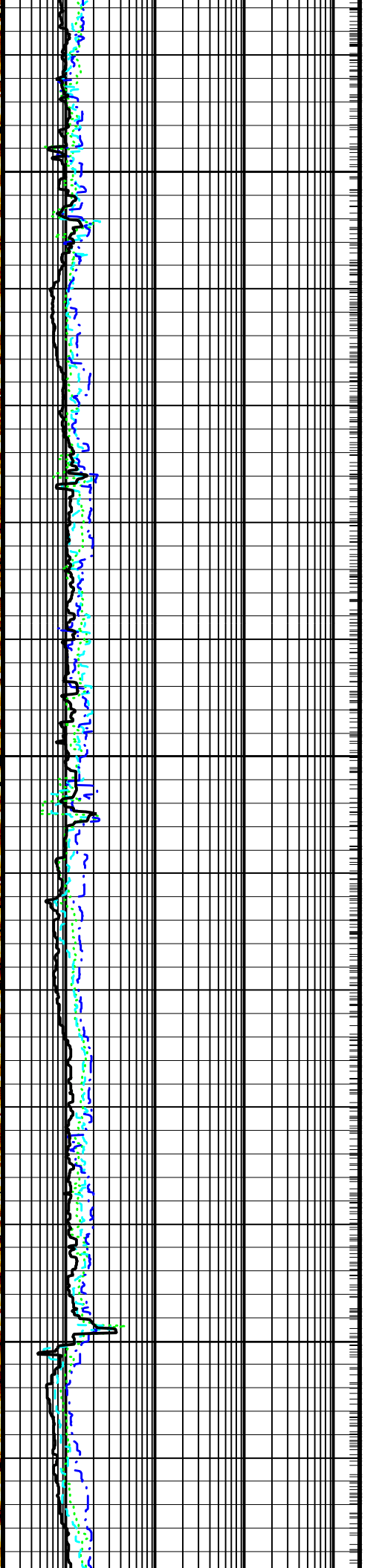
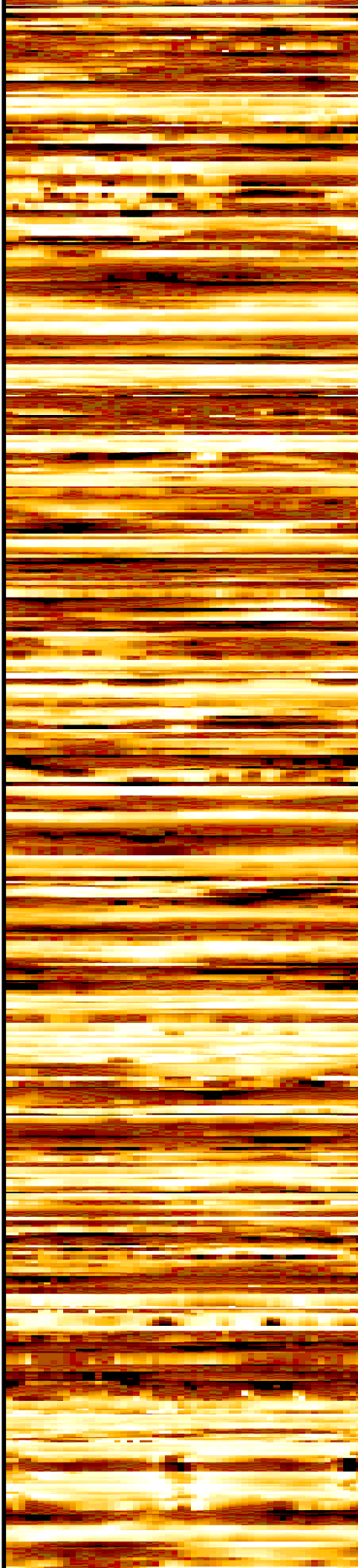


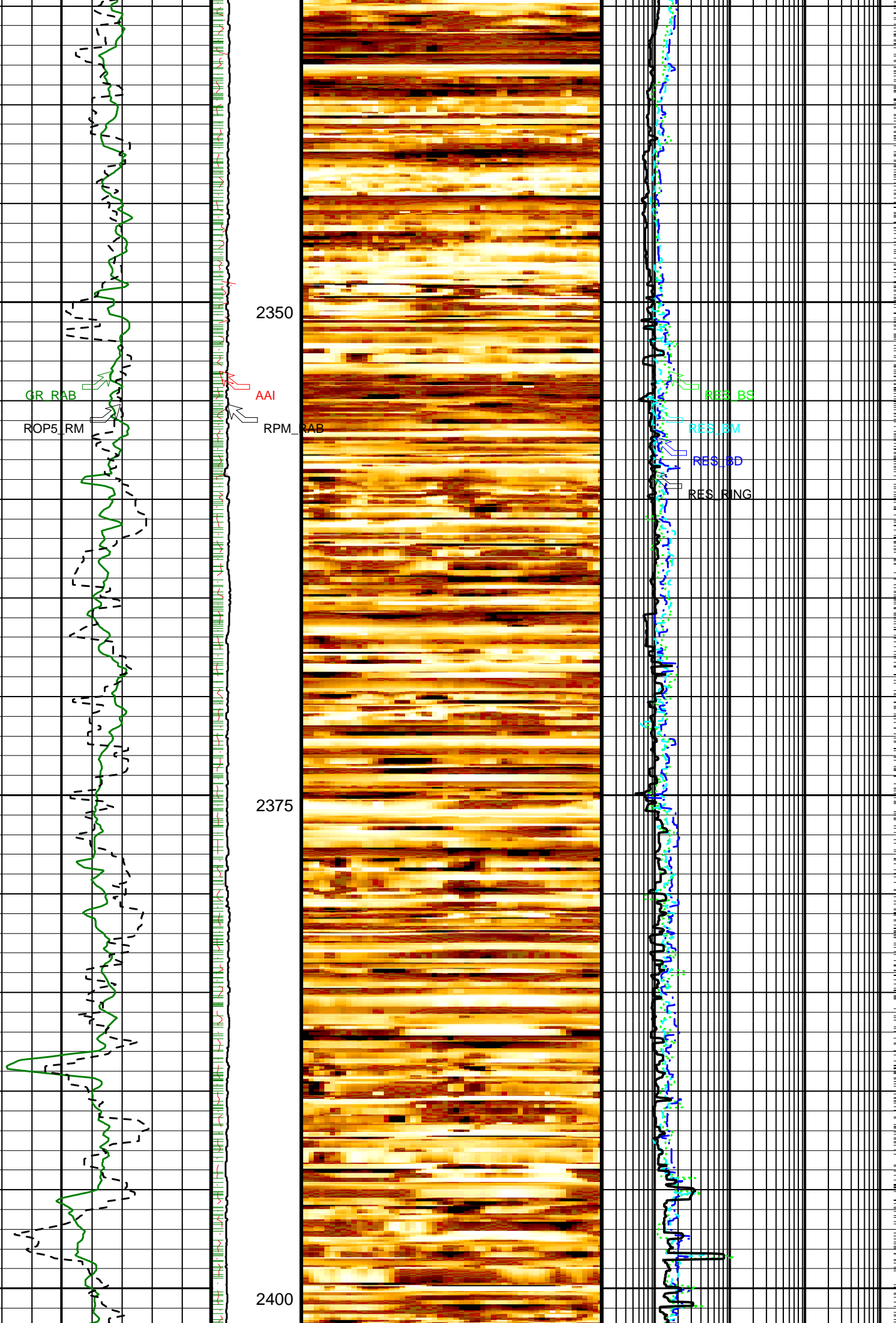


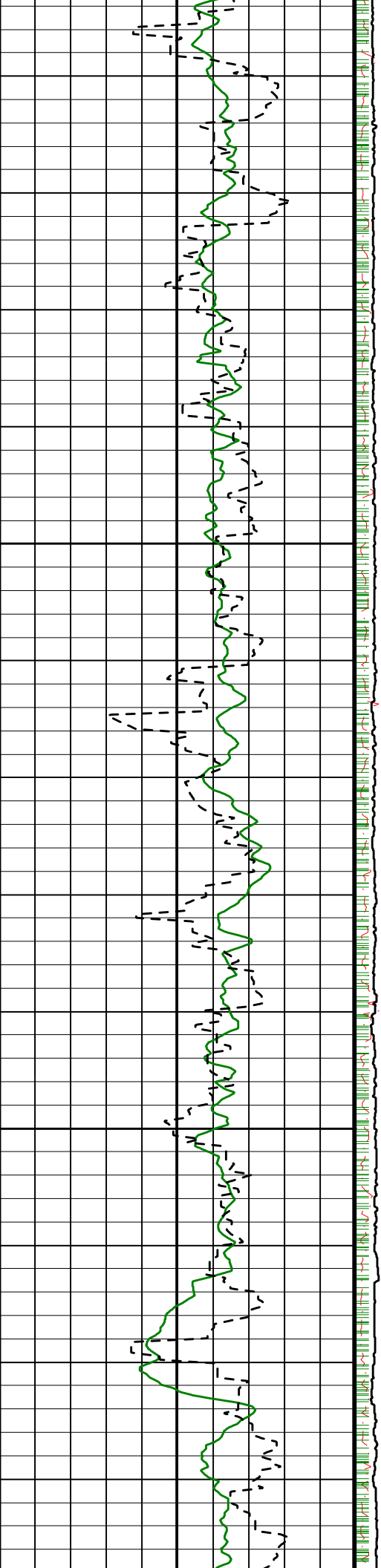
2275

2300

2325

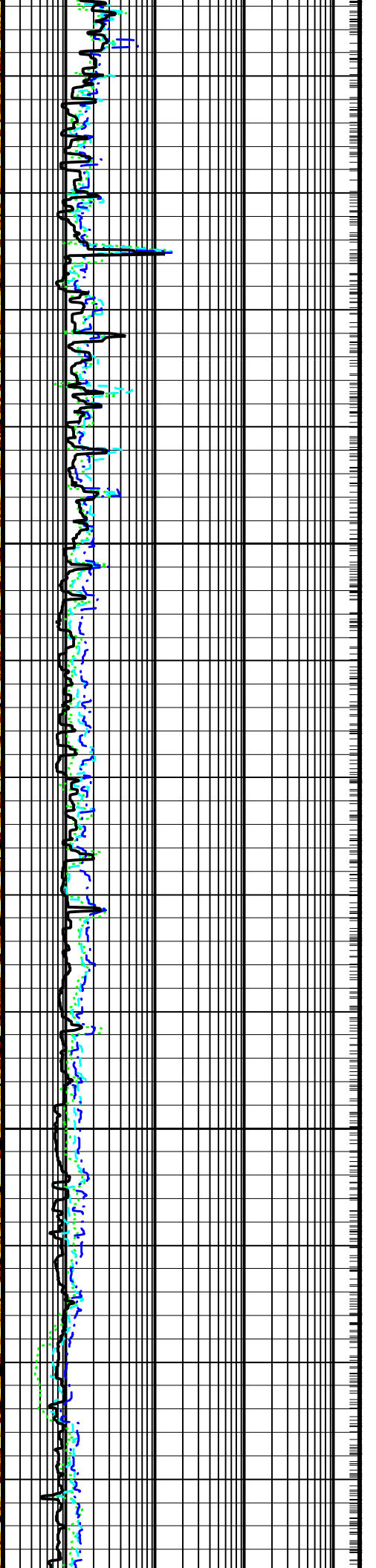
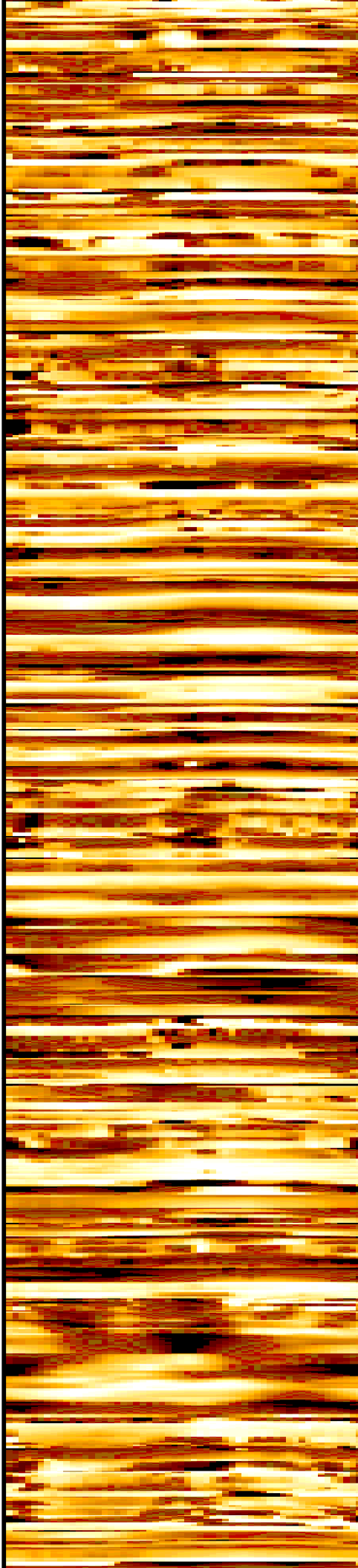


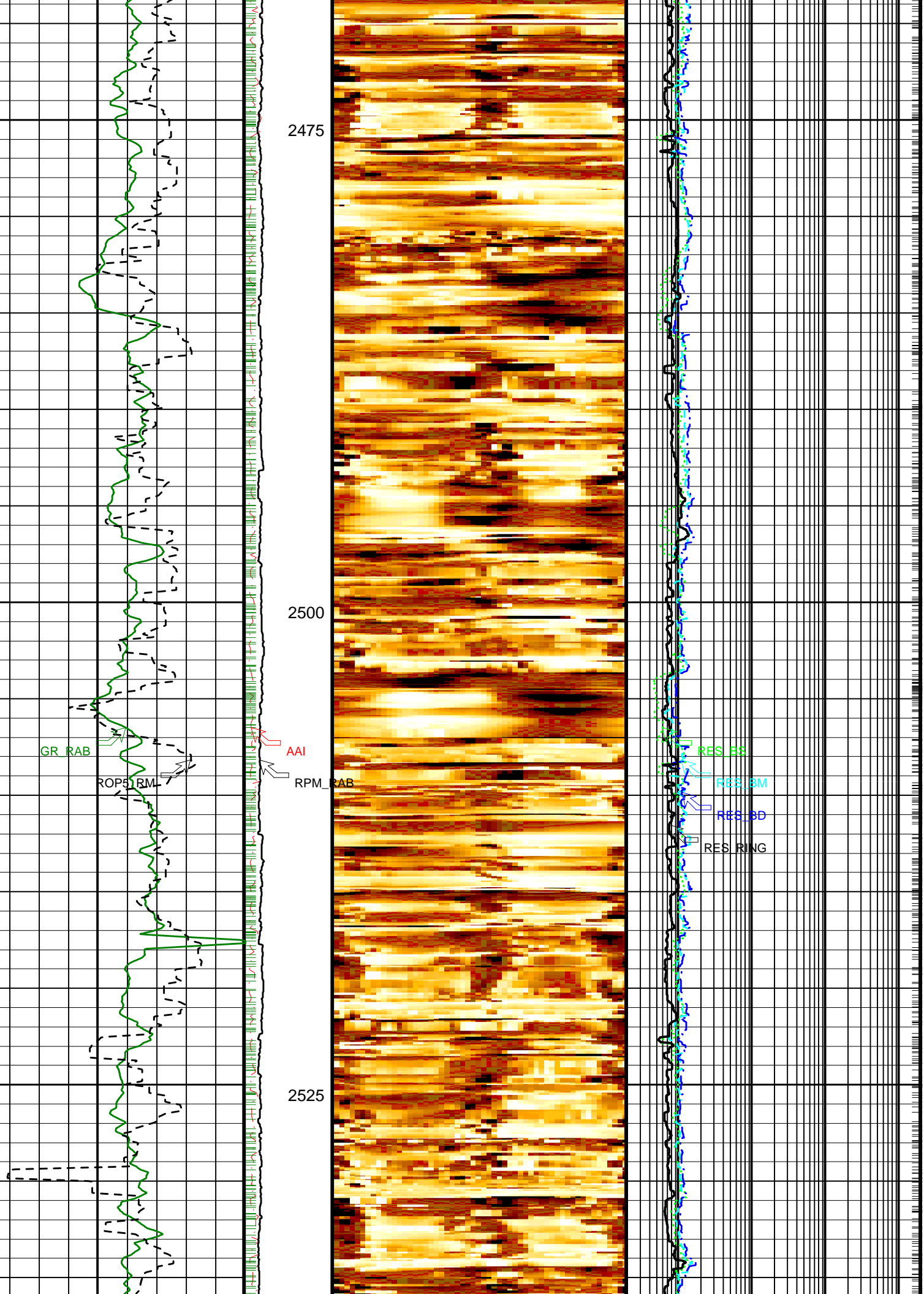


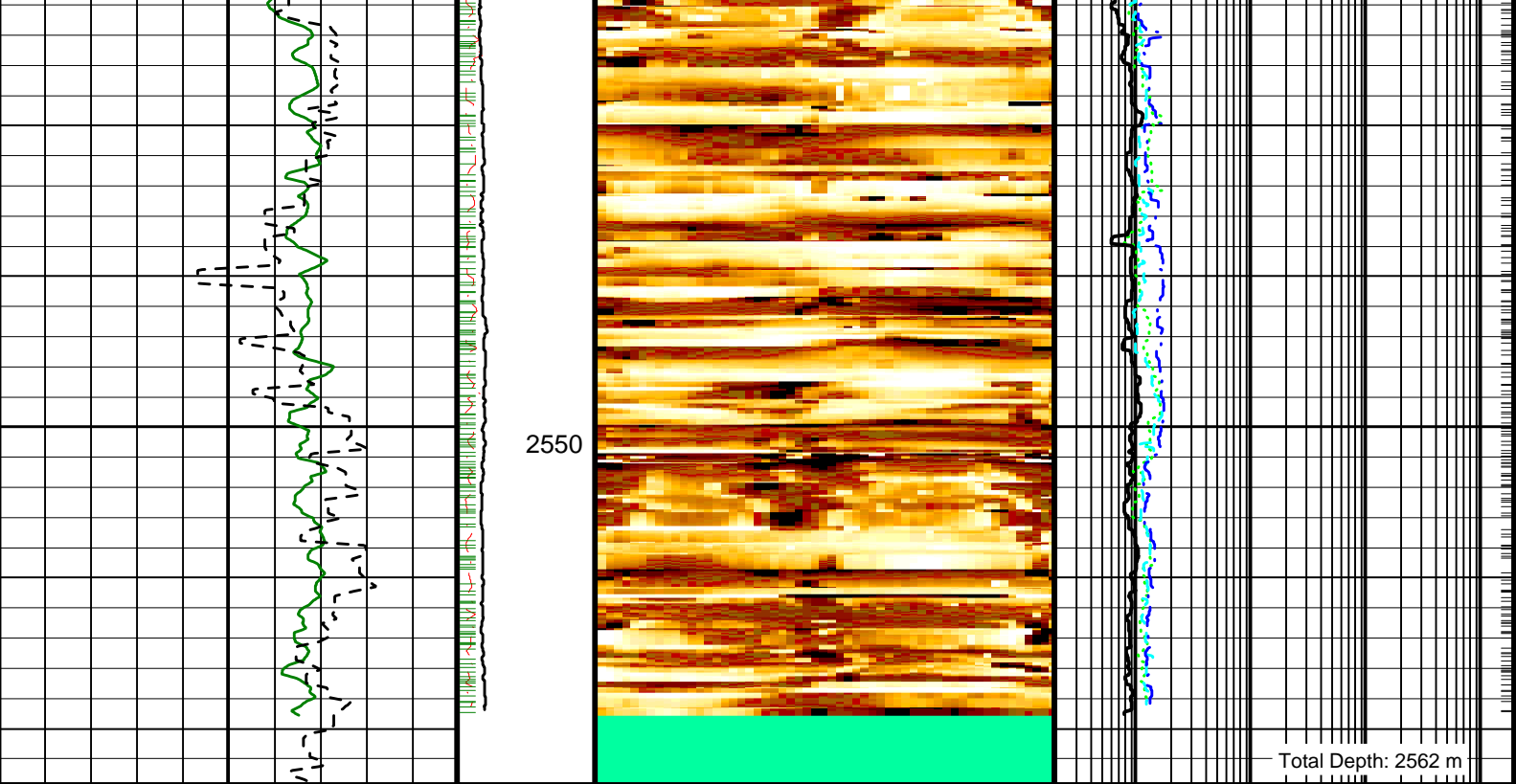


2425

2450







<p>RAB Gamma Ray (GR_RAB) (GAPI)</p> <p>0 150</p>	<p>Angular Acceleration Indicator (AAI)</p> <p>(---)</p> <p>0 200</p>	<p>Conductive Resistive (R3IM_DYN)</p> <p>(---)</p>	<p>Shallow Button Resistivity (RES_BS) (OHMM)</p> <p>0.2 2000</p>
<p>ROP: 5 Feet Average (ROP5_RM) (M/HR)</p> <p>100 0</p>	<p>RAB Rotational Speed (RPM_RAB) (RPM)</p> <p>0 400</p>		<p>Medium Button Resistivity (RES_BM) (OHMM)</p> <p>0.2 2000</p>
			<p>Deep Button Resistivity (RES_BD) (OHMM)</p> <p>0.2 2000</p> <p>Ring Resistivity (RES_RING) (OHMM)</p> <p>0.2 2000</p>

PIP SUMMARY

Gamma Ray Samples

Ring Samples

IDEAL Version: ID10_2B_08
IDF

ADN id10_2c_01

IDEAL Version: ID10_2B_08
IDF

ADN id10_2c_01

Format: GEOVIS_RES_DYN_IMAGE

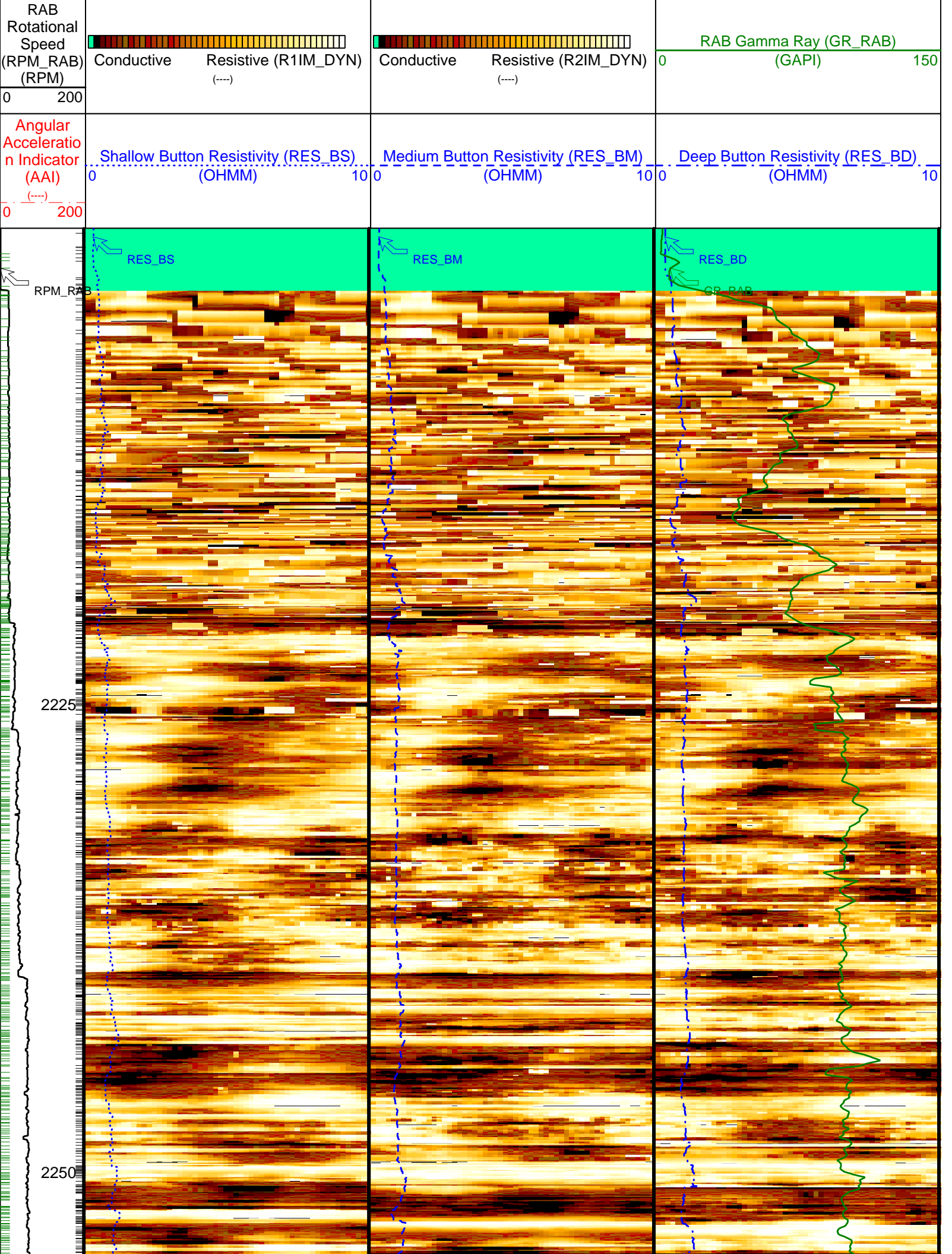
Vertical Scale: 1:240

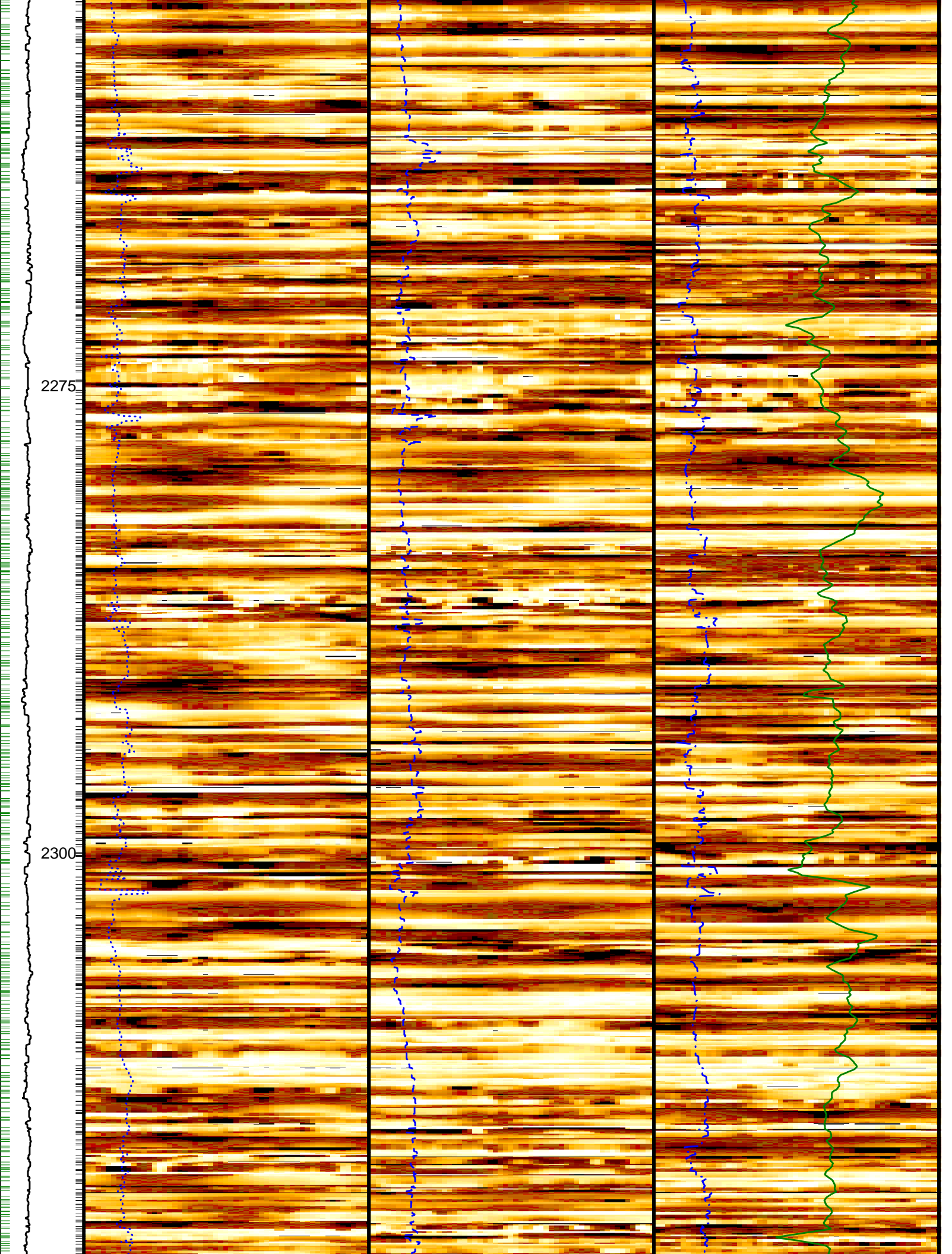
Graphics File Created: 02-Oct-2005 17:06

PIP SUMMARY

Ring Samples
Gamma Ray Samples

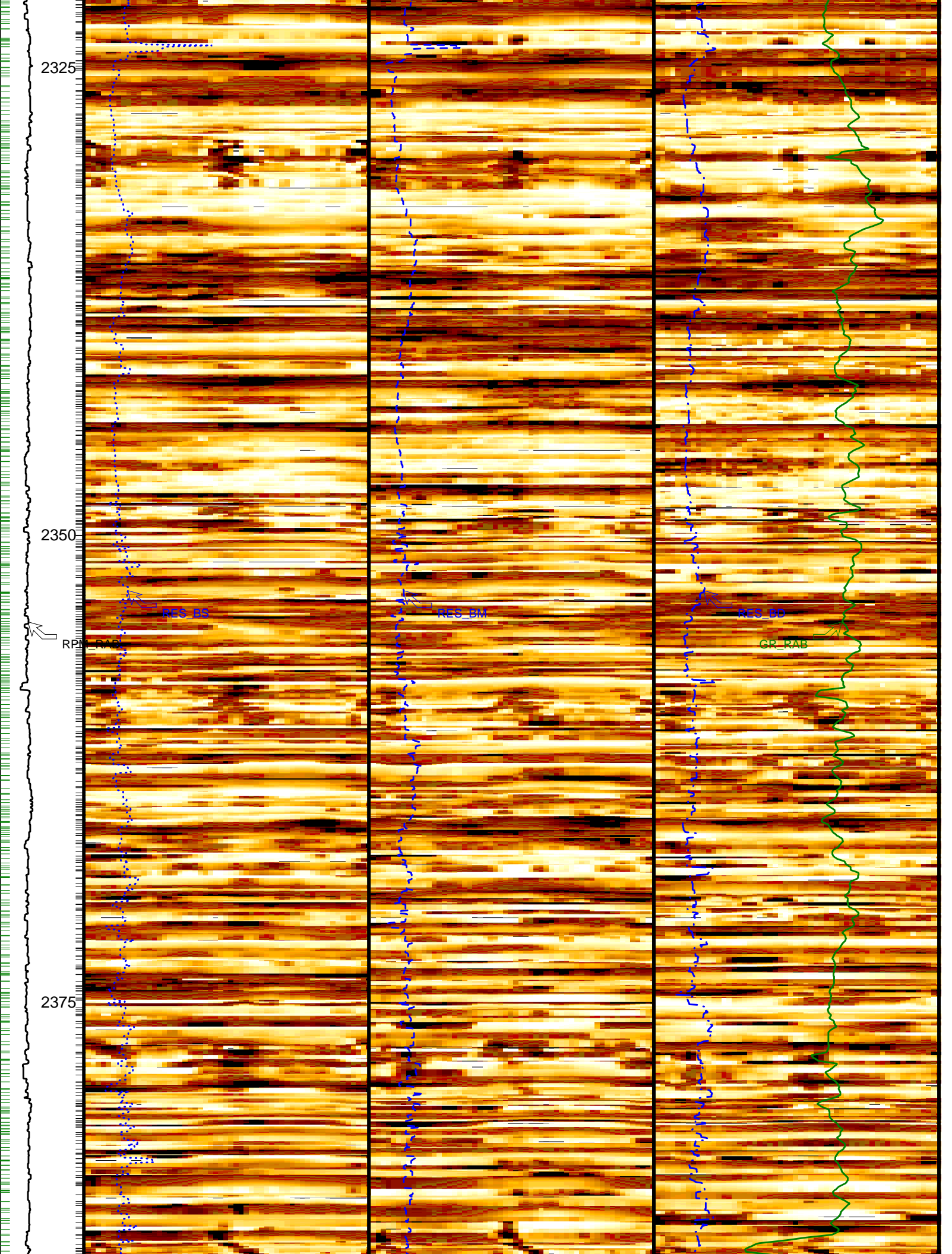


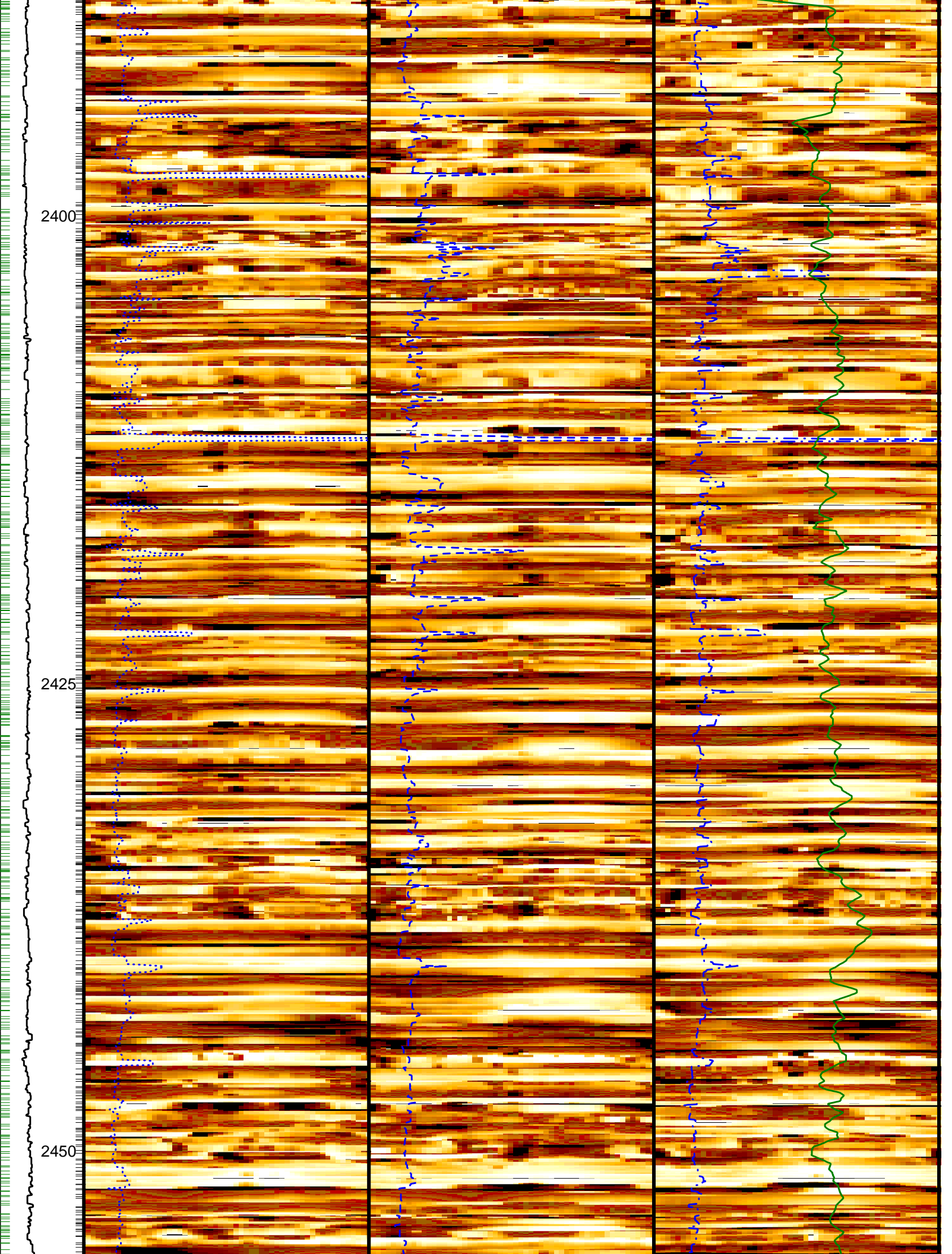


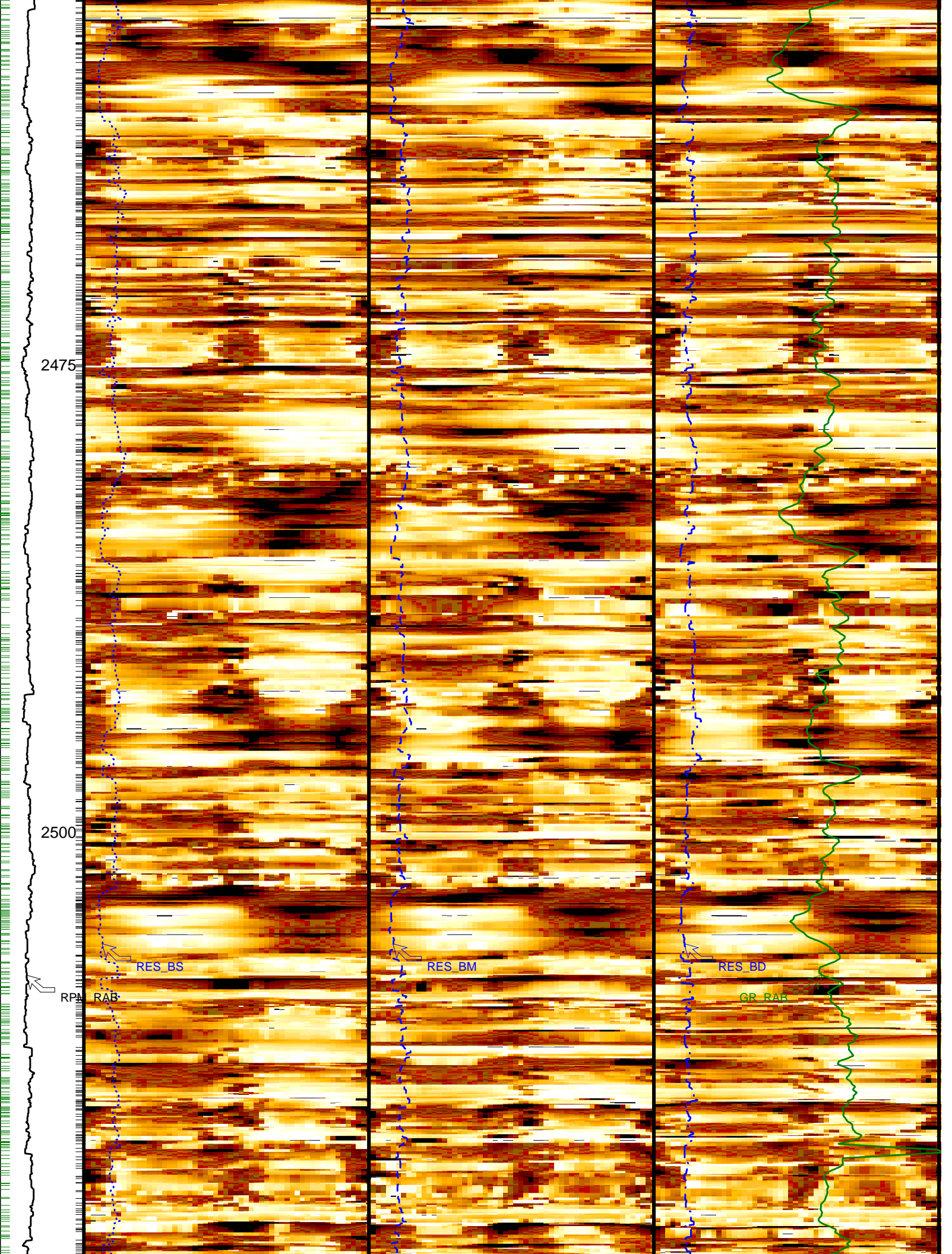


2275

2300







2475

2500

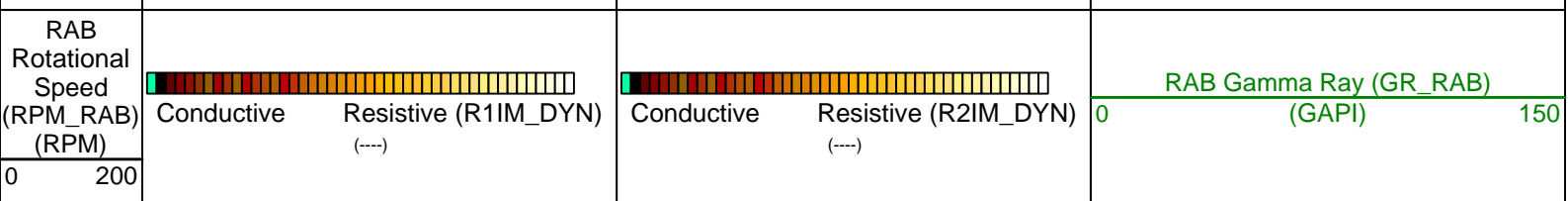
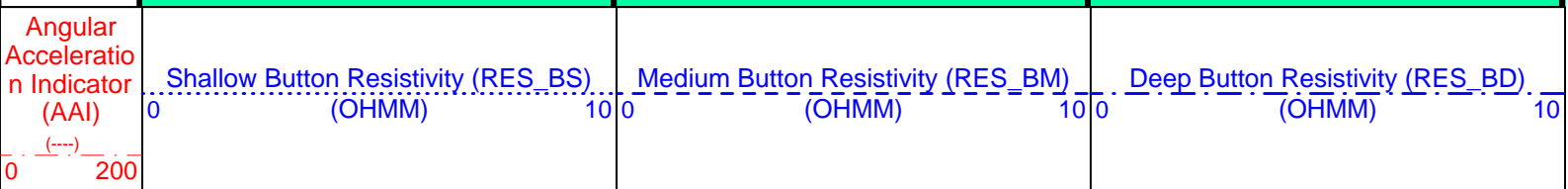
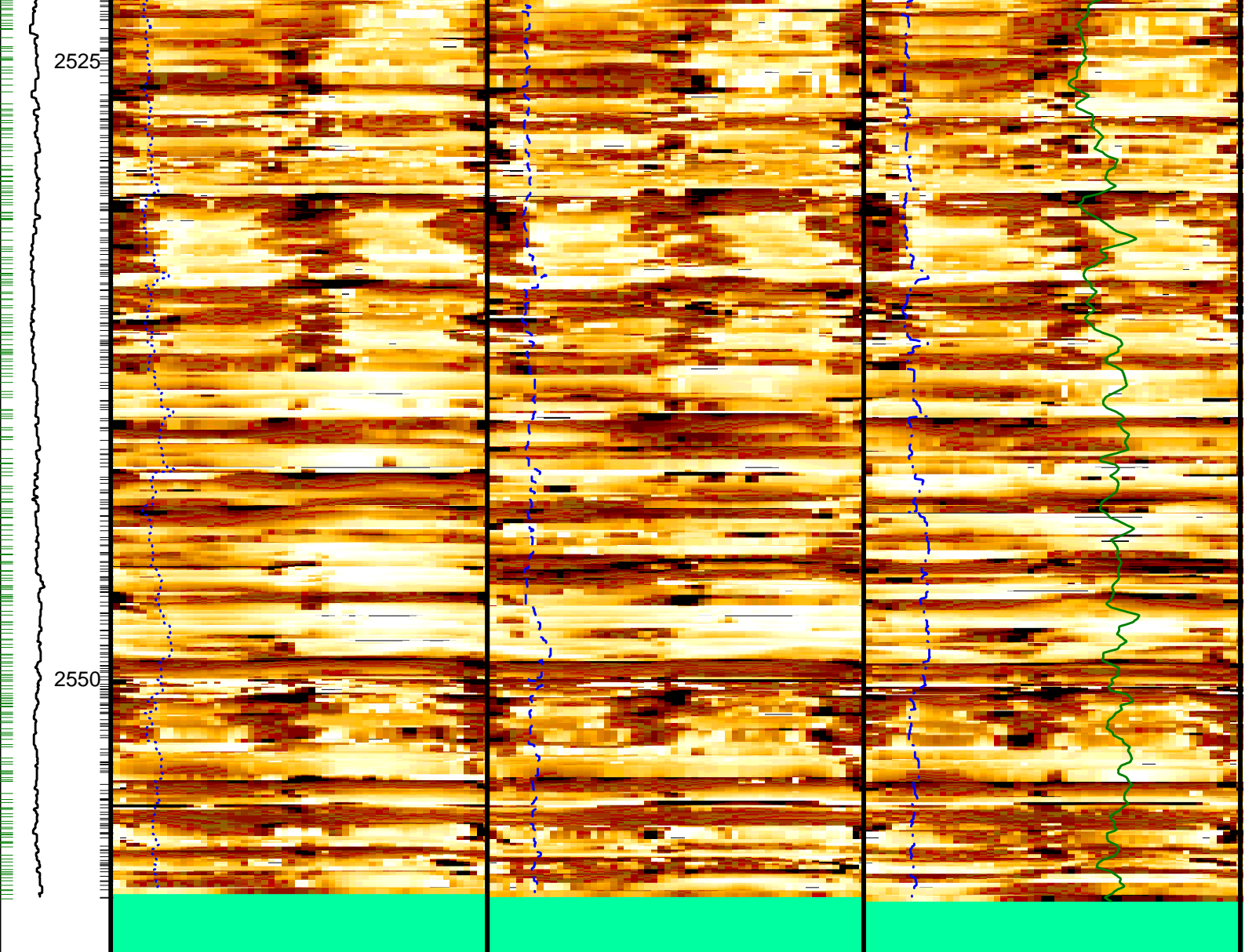
RPA

RES_BS

RES_BM

RES_BD

GR_RAB



PIP SUMMARY

⊣ Ring Samples
 ⊢ Gamma Ray Samples

IDEAL Version: ID10_2B_08
IDF

ADN id10_2c_01

Well: IODP Expedition 311 CAS-02C
Field: Cascadia Margin
Rig: JOIDES Resolution
State: Pacific Ocean

GeoVISION Resistivity - Image
1:240 Measured Depth
Recorded Mode Log