

Company: Lamont-Doherty Borehole Research

Field Print

Well: CAS-03C
Field: Vancouver Island
Rig: JOIDES Resolution State: Pacific Ocean

**EcoScope Service
1:240 Measured Depth
Recorded Mode, Composite Log**

Rig: JOIDES Resolution
Field: Vancouver Island
Location:
Well: CAS-03C
Company: Lamont-Doherty Borehole Resea

Location		Elevation	
Total depth:	2139 m	K.B.	10.06 m
Spud date:	22-Sep-2005	G.L.	-1829 m
Runs:	1 To 1	D.F.	9.76 m
Permanent datum:	MEAN SEA LEVEL	Elev.:	0 m
Log measured from:	Kelly Bushing	10.06 m above Perm. datum	
Depth reference:	Kelly Bushing		
API serial no.	NAD 27 UTM	Longitude	Latitude
40012416	Zone 10 N	W 127.05055	N 48.62722

Depth logged: 1839 m To 2138 m **Mag decl:** 18.83 deg. **Other services:**
Date logged: 22-Sep-05 To 23-Sep-05 **Mag dip:** 69.14 deg. **GeoVISION**

Bore hole record		Casing record	
Hole size	from	to	Size
9.875 in.	1839 m	2139 m	

Type	Mud record		Borehole deviation record			
	from	to	Min	Max	from	to
Seawater	1839 m	2139 m				
Surface equipment						
Unit	TWIS	IDEAL Wis	ID10_2C_01			
Depth system	Geolograph	SPM	hspm10_1c_05			
		LWD	See Remarks			
		MWD	9.0_C03			
Software record						

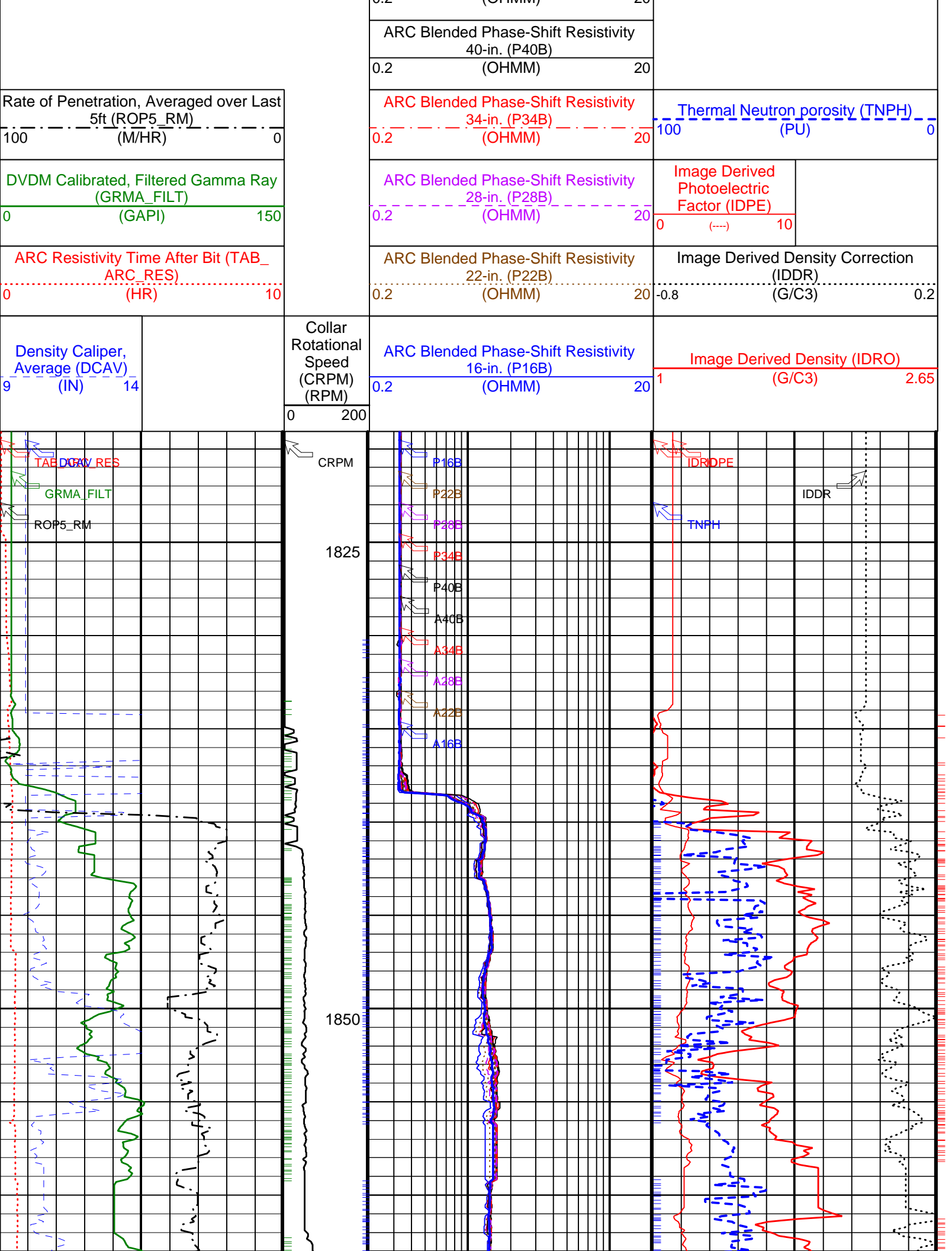
IDEAL Version: ID10_2C_01.1SV IDF

Format: 5 MD ADN/ARC Vertical Scale: 1:240 Graphics File Created: 27-Sep-2005 01:44

PIP SUMMARY

Density Ticks, 0.1-ft ↑
 + ARC Resistivity Samples
 Neutron Ticks, 0.1 ft ↑
 ↓ DVDM Gamma Ray Samples

ARC Blended Attenuation Resistivity 16-in. (A16B)		
0.2	(OHMM)	20
ARC Blended Attenuation Resistivity 22-in. (A22B)		
0.2	(OHMM)	20
ARC Blended Attenuation Resistivity 28-in. (A28B)		
0.2	(OHMM)	20
ARC Blended Attenuation Resistivity 34-in. (A34B)		
0.2	(OHMM)	20
ARC Blended Attenuation Resistivity 40-in. (A40B)		
0.2	(OHMM)	20



Rate of Penetration, Averaged over Last 5ft (ROP5_RM) (M/HR)

DVDM Calibrated, Filtered Gamma Ray (GRMA_FILT) (GAPI)

ARC Resistivity Time After Bit (TAB_ARC_RES) (HR)

Density Caliper, Average (DCAV) (IN)

Collar Rotational Speed (CRPM) (RPM)

ARC Blended Phase-Shift Resistivity 40-in. (P40B) (OHMM)

ARC Blended Phase-Shift Resistivity 34-in. (P34B) (OHMM)

ARC Blended Phase-Shift Resistivity 28-in. (P28B) (OHMM)

ARC Blended Phase-Shift Resistivity 22-in. (P22B) (OHMM)

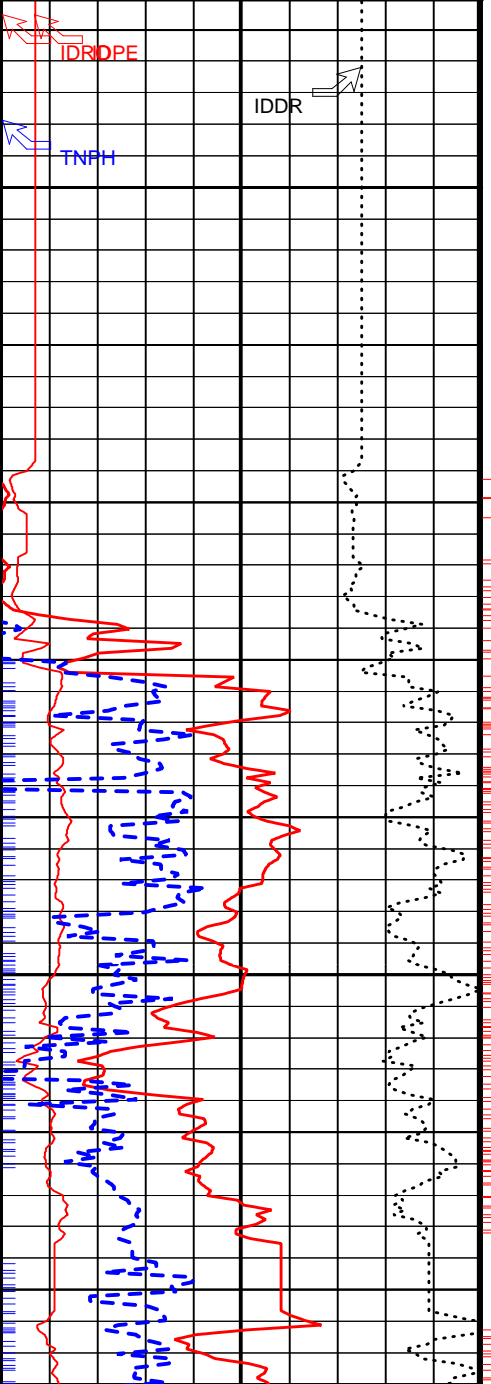
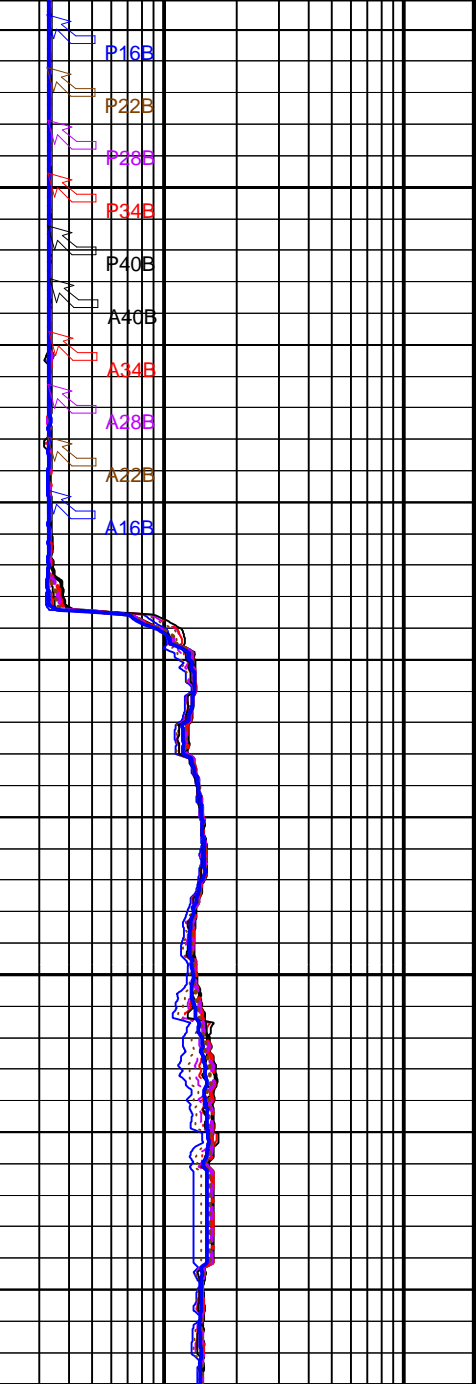
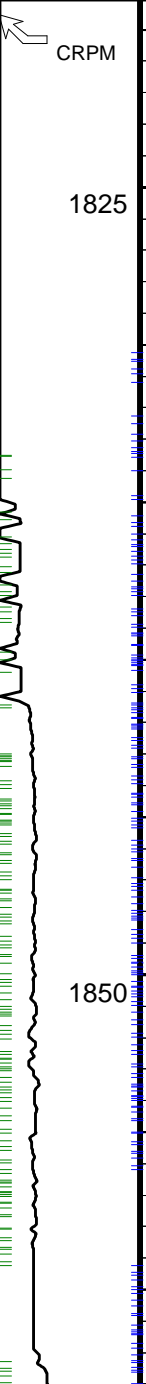
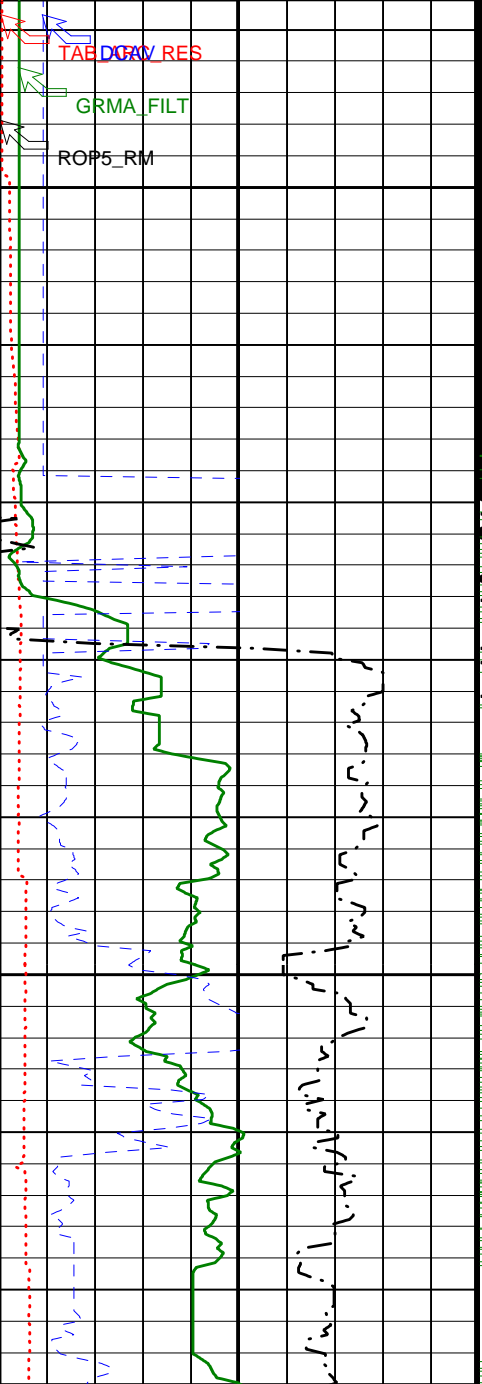
ARC Blended Phase-Shift Resistivity 16-in. (P16B) (OHMM)

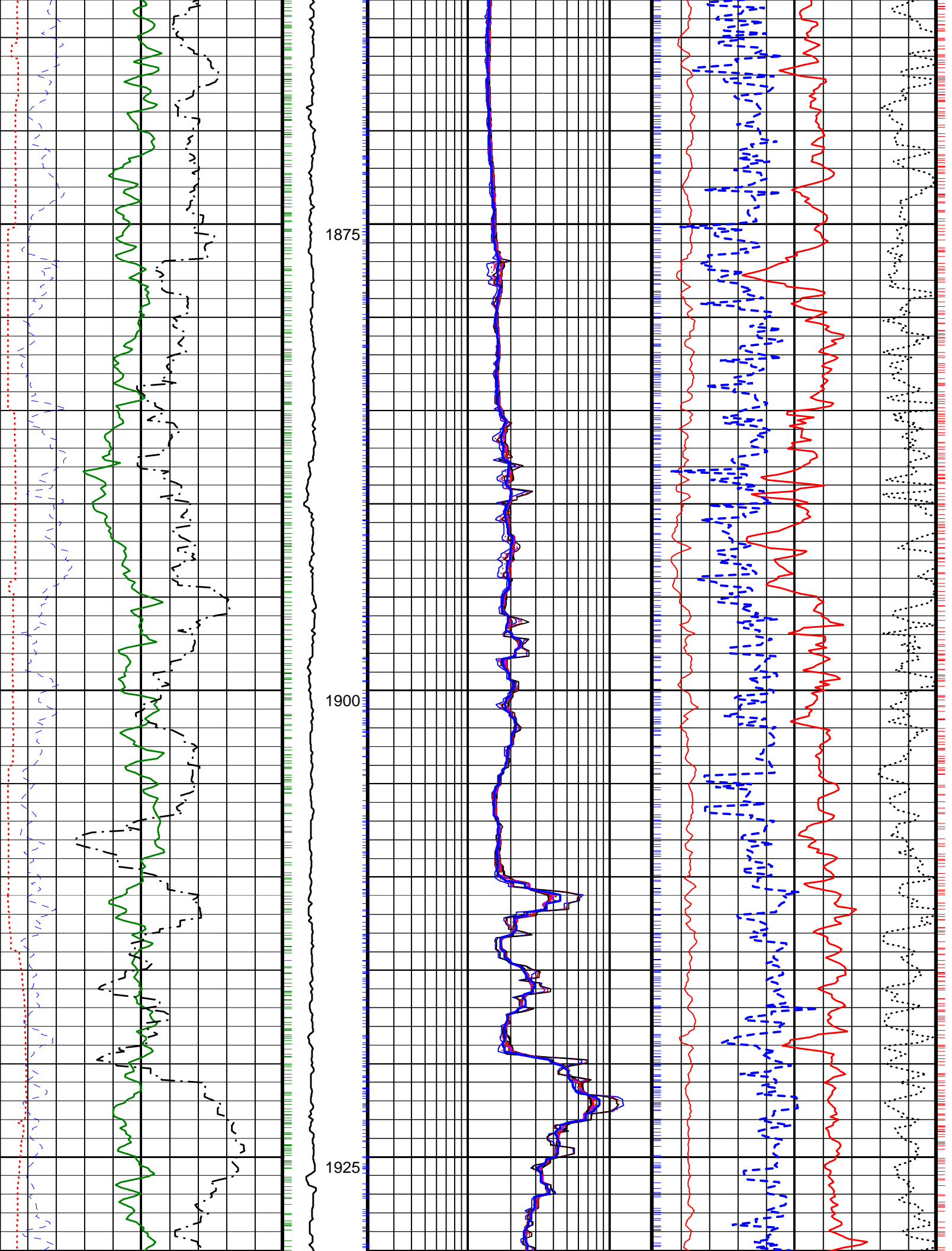
Thermal Neutron porosity (TNPH) (PU)

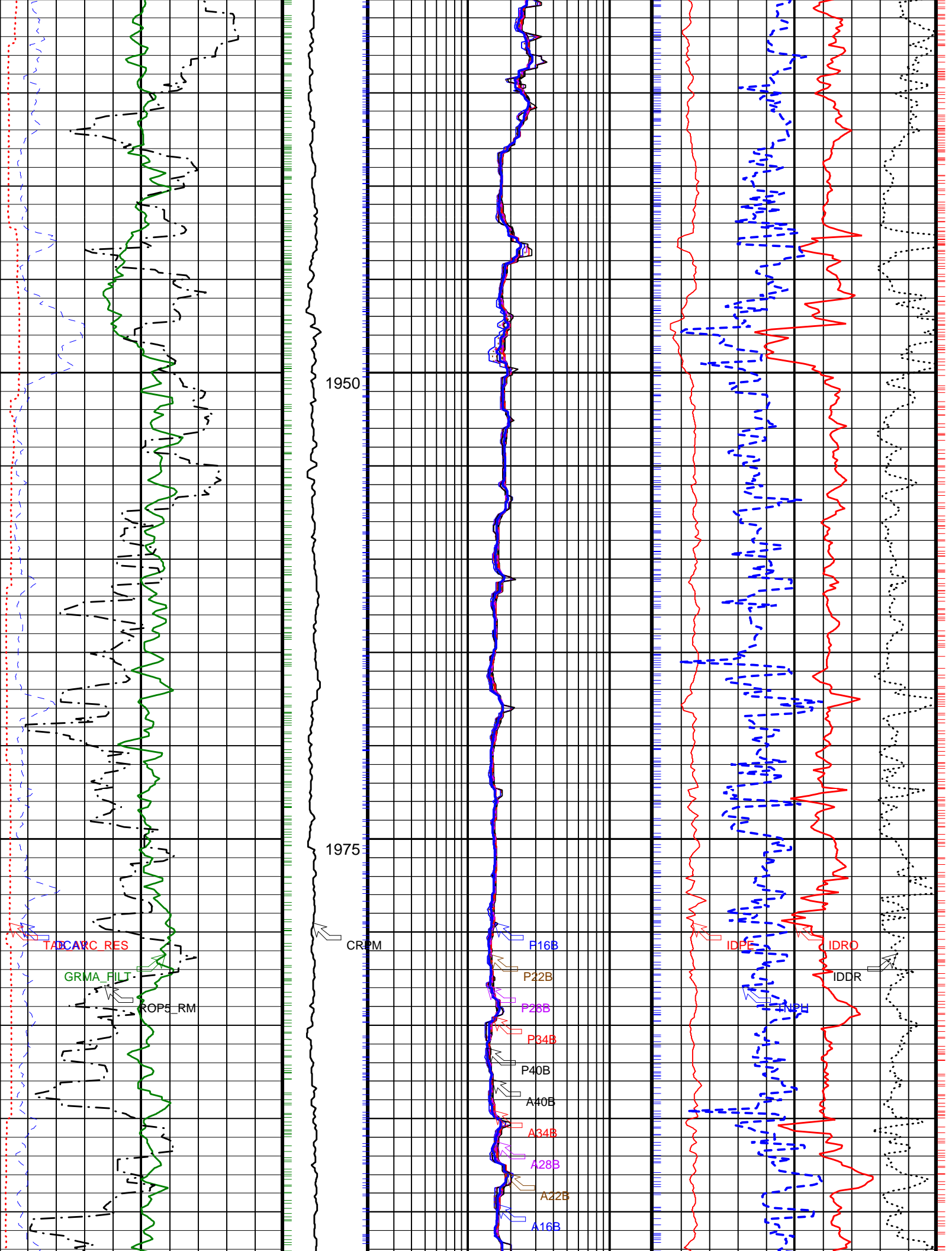
Image Derived Photoelectric Factor (IDPE) (G/C3)

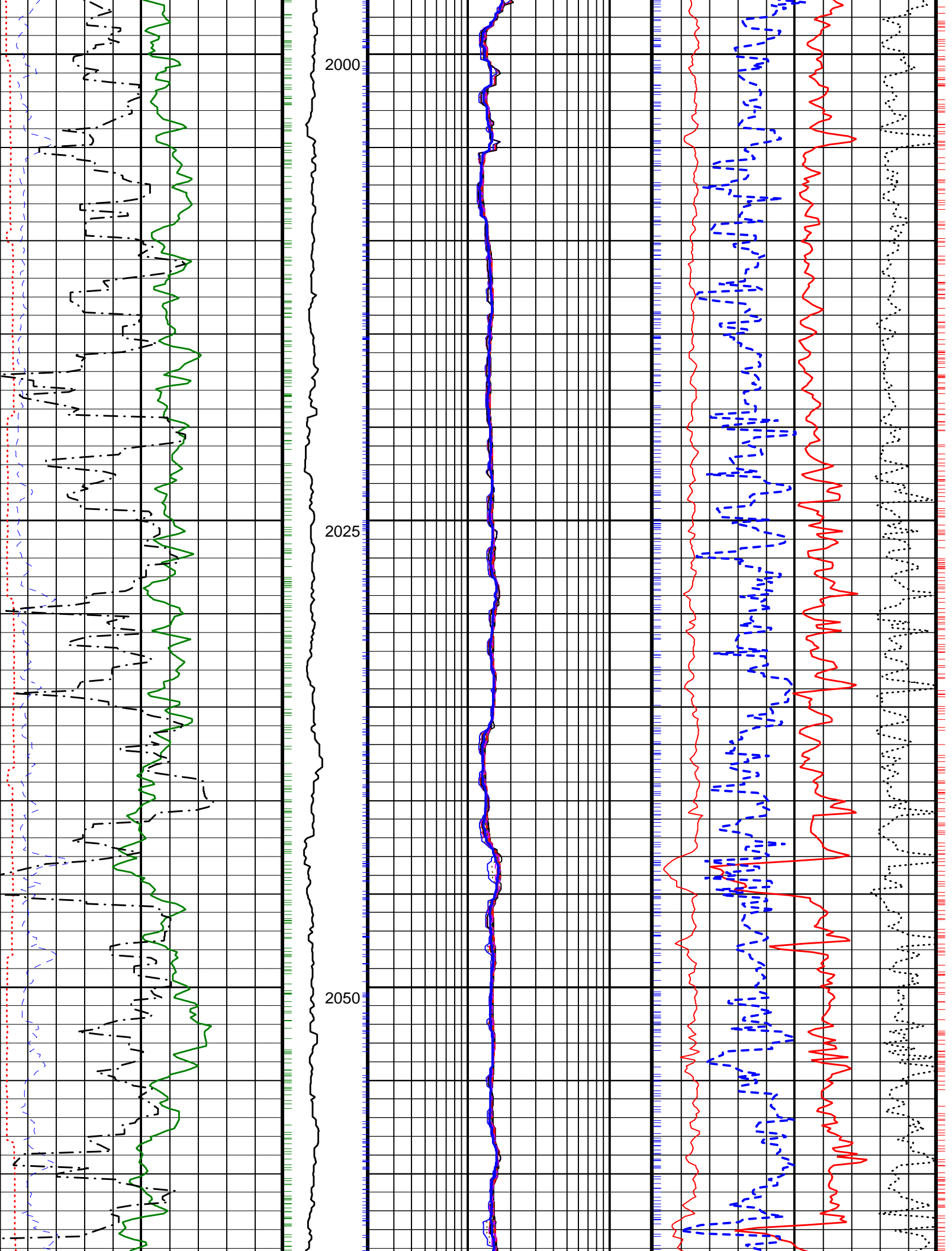
Image Derived Density Correction (IDDR) (G/C3)

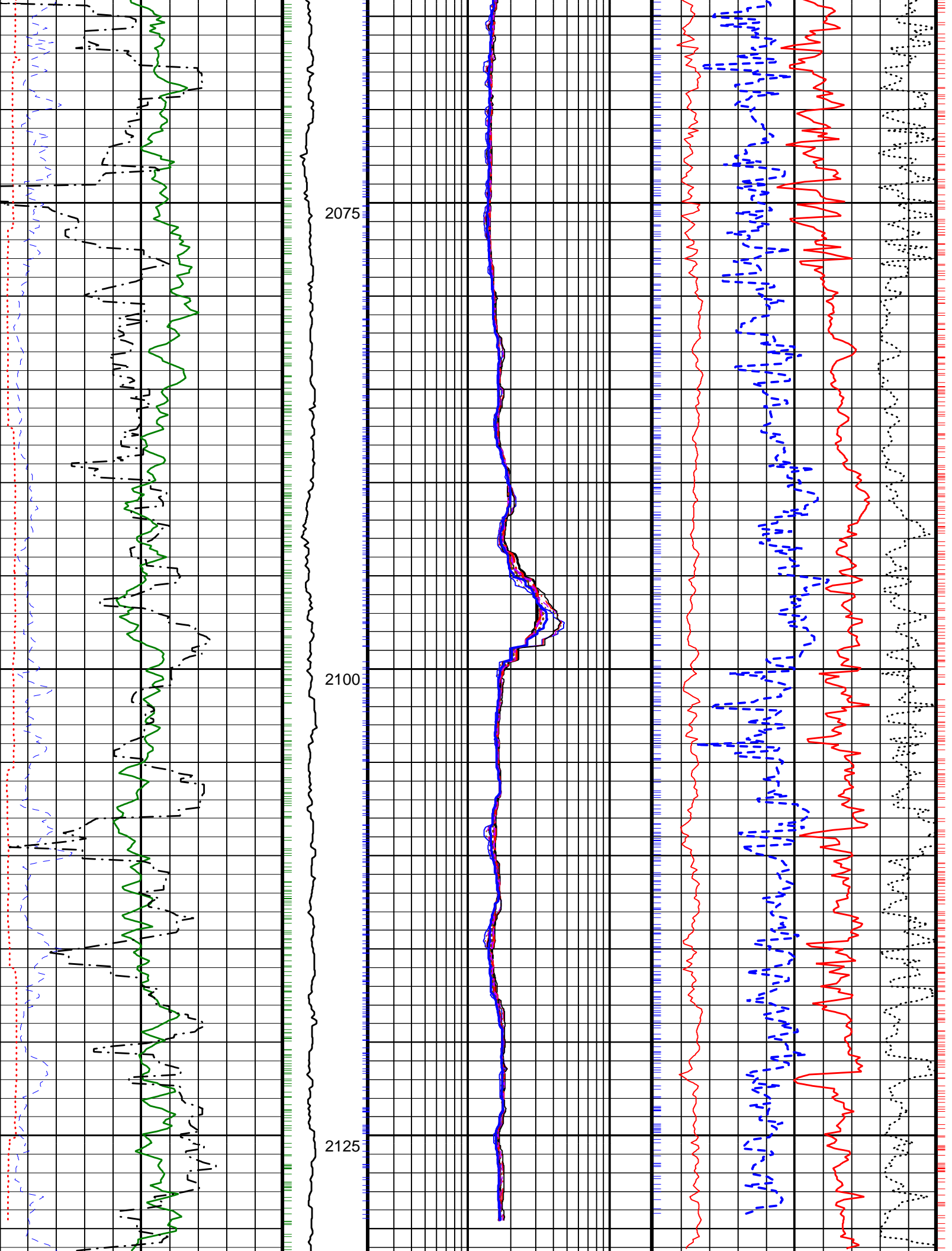
Image Derived Density (IDRO) (G/C3)

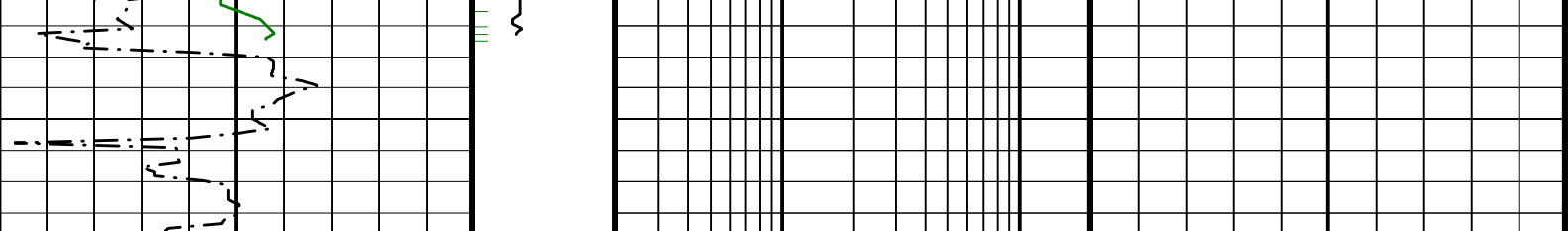












Density Caliper, Average (DCAV) 9 (IN) 14	Collar Rotational Speed (CRPM) (RPM) 0 200	ARC Blended Phase-Shift Resistivity 16-in. (P16B) 0.2 (OHMM) 20	Image Derived Density (IDRO) 1 (G/C3) 2.65	
		ARC Blended Phase-Shift Resistivity 22-in. (P22B) 0.2 (OHMM) 20	Image Derived Density Correction (IDDR) -0.8 (G/C3) 0.2	
ARC Resistivity Time After Bit (TAB_ ARC_RES) 0 (HR) 10		ARC Blended Phase-Shift Resistivity 28-in. (P28B) 0.2 (OHMM) 20	Image Derived Photoelectric Factor (IDPE) 0 (----) 10	
DVDM Calibrated, Filtered Gamma Ray (GRMA_FILT) 0 (GAPI) 150		ARC Blended Phase-Shift Resistivity 34-in. (P34B) 0.2 (OHMM) 20	Thermal Neutron porosity (TNPH) 100 (PU) 0	
Rate of Penetration, Averaged over Last 5ft (ROP5_RM) 100 (M/HR) 0		ARC Blended Phase-Shift Resistivity 40-in. (P40B) 0.2 (OHMM) 20		
		ARC Blended Attenuation Resistivity 40-in. (A40B) 0.2 (OHMM) 20		
		ARC Blended Attenuation Resistivity 34-in. (A34B) 0.2 (OHMM) 20		
		ARC Blended Attenuation Resistivity 28-in. (A28B) 0.2 (OHMM) 20		
		ARC Blended Attenuation Resistivity 22-in. (A22B) 0.2 (OHMM) 20		
		ARC Blended Attenuation Resistivity 16-in. (A16B) 0.2 (OHMM) 20		

PIP SUMMARY

† ARC Resistivity Samples
 † DVDM Gamma Ray Samples
 Neutron Ticks, 0.1 ft †

Density Ticks, 0.1-ft †

IDEAL Version: ID10_2C_01.1SV
IDF

Company: Lamont-Doherty Borehole Research
 Well: CAS-03C
 Field: Vancouver Island
 Rig: JOIDES Resolution
 Schlumberger
 Field Print

State: Pacific Ocean

EcoScope Service

1:240 Measured Depth

Recorded Mode, Composite Log