

GR_RAB

ROP5_RM

AAI

RPM_RAB

RES_BS

RES_BM

RES_BD

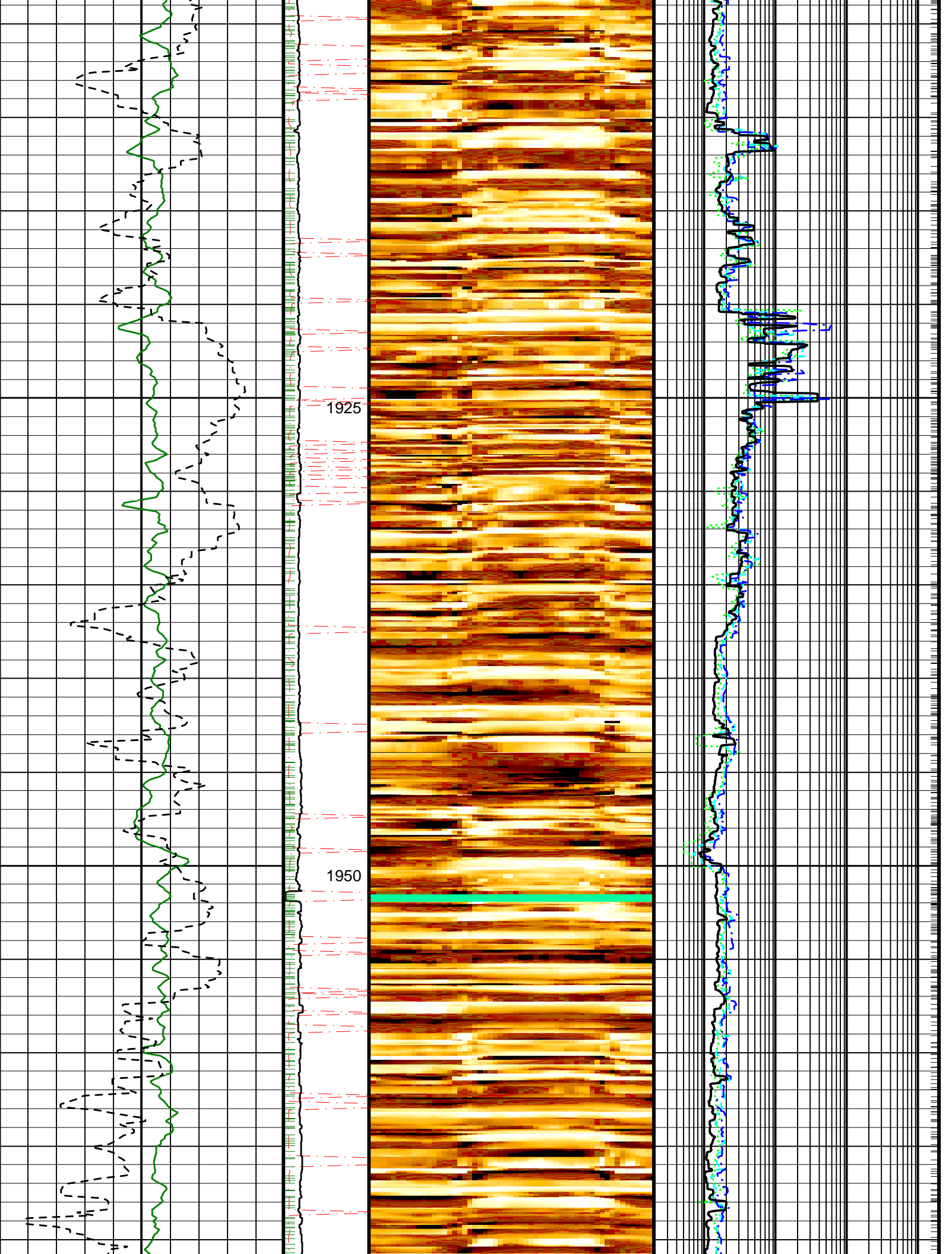
RES_RING

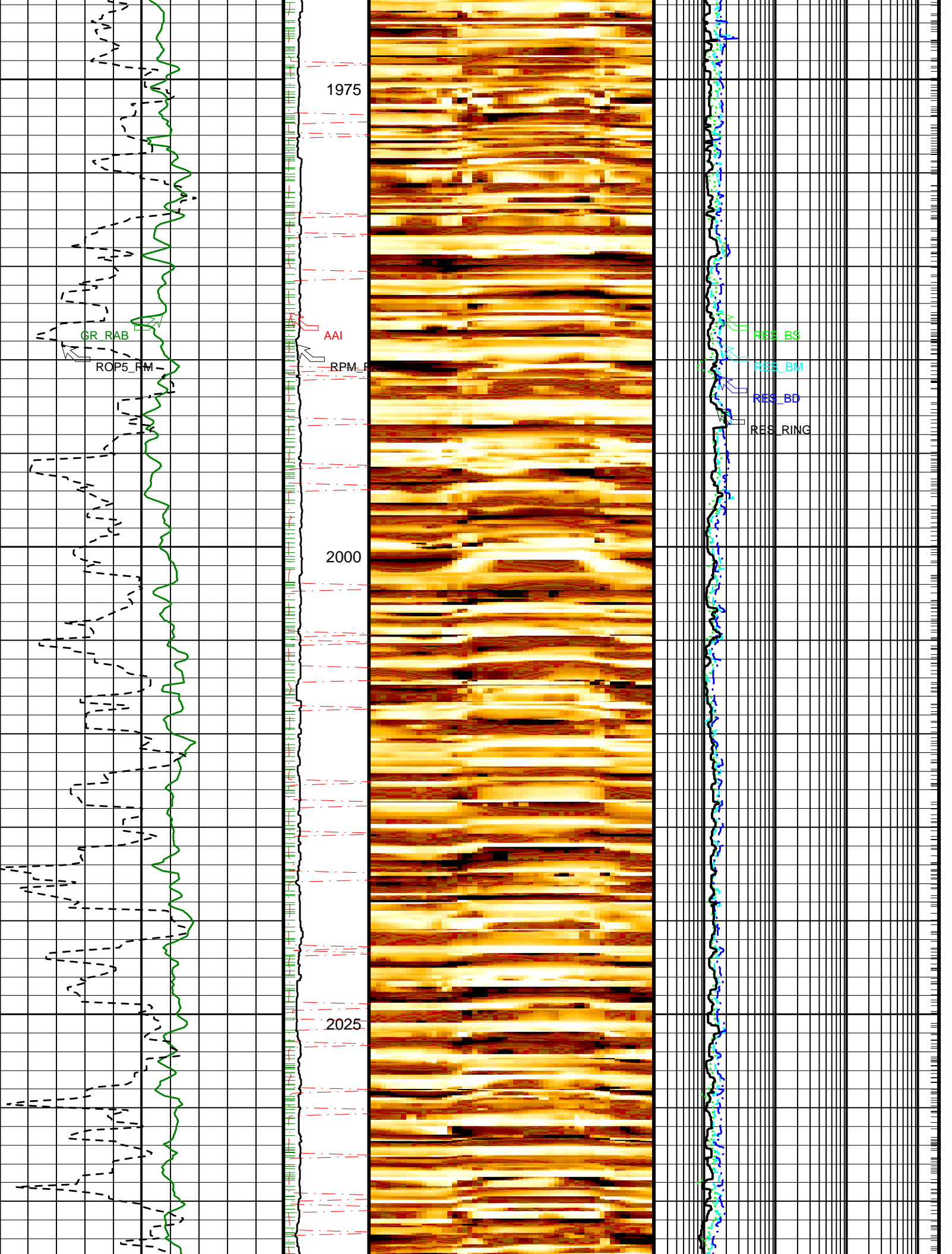
1850

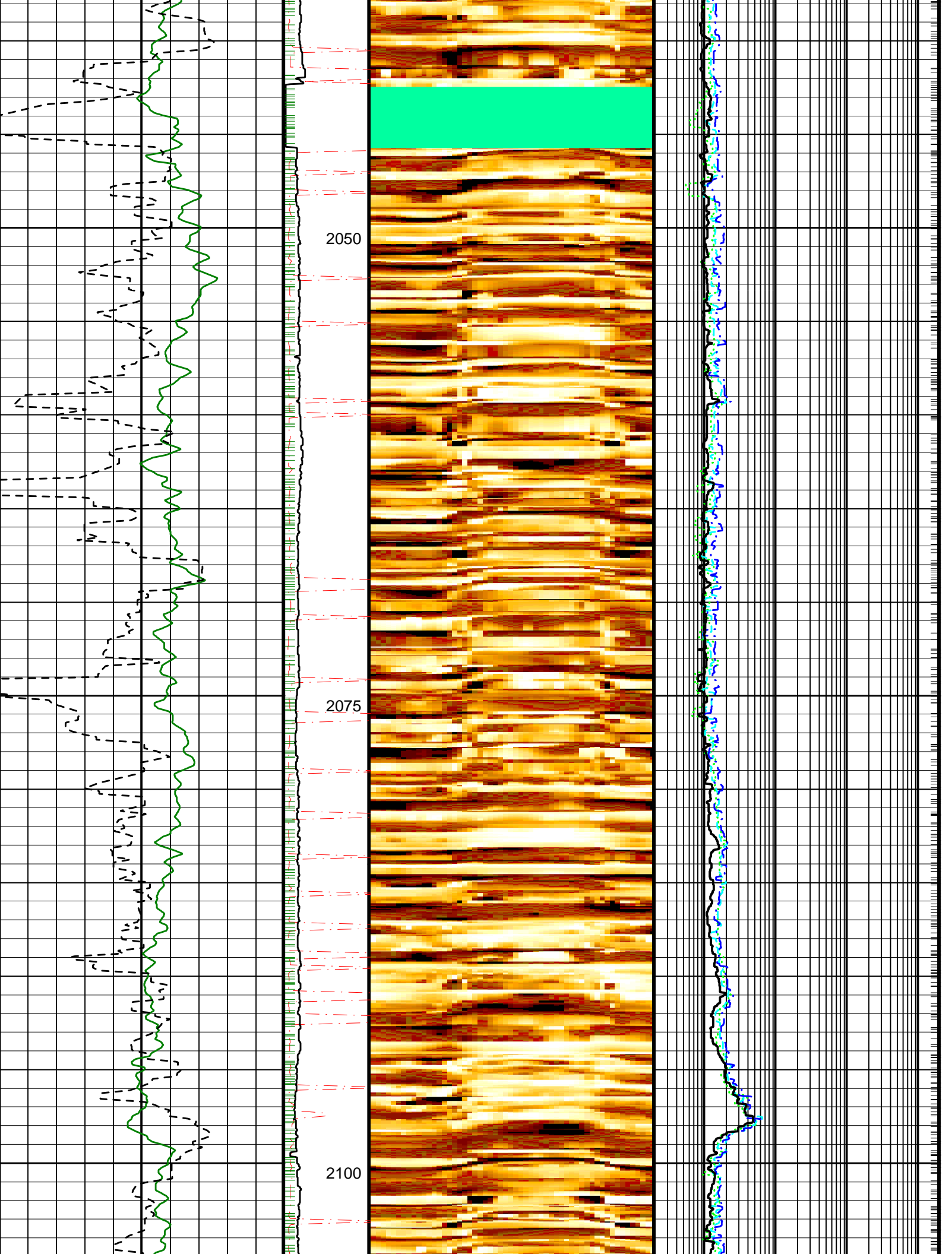
1875

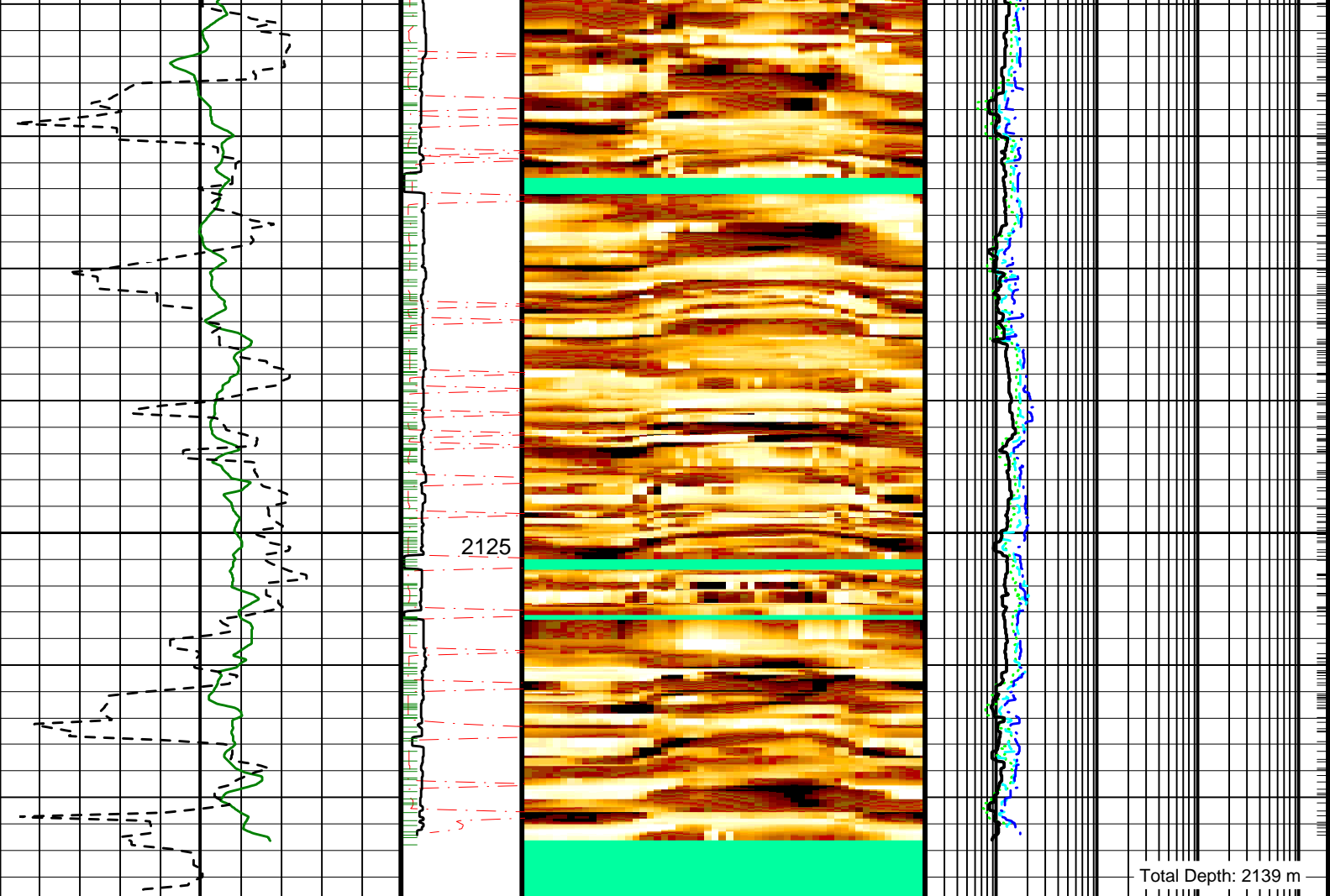
1900

Start Depth: 1833 m
Mud Type: Seawater
geoVISION s/n 163









Total Depth: 2139 m

<p>RAB Gamma Ray (GR_RAB) (GAPI)</p> <p>0 150</p>	<p>Angular Acceleration Indicator (AAI) (---)</p> <p>0 200</p>	<p>Conductive Resistive (R3IM_DYN) (---)</p>	<p>Shallow Button Resistivity (RES_BS) (OHMM)</p> <p>0.2 2000</p>
<p>ROP: 5 Feet Average (ROP5_RM) (M/HR)</p> <p>100 0</p>	<p>RAB Rotational Speed (RPM_RAB) (RPM)</p> <p>0 400</p>		<p>Medium Button Resistivity (RES_BM) (OHMM)</p> <p>0.2 2000</p>
			<p>Deep Button Resistivity (RES_BD) (OHMM)</p> <p>0.2 2000</p> <p>Ring Resistivity (RES_RING) (OHMM)</p> <p>0.2 2000</p>

PIP SUMMARY

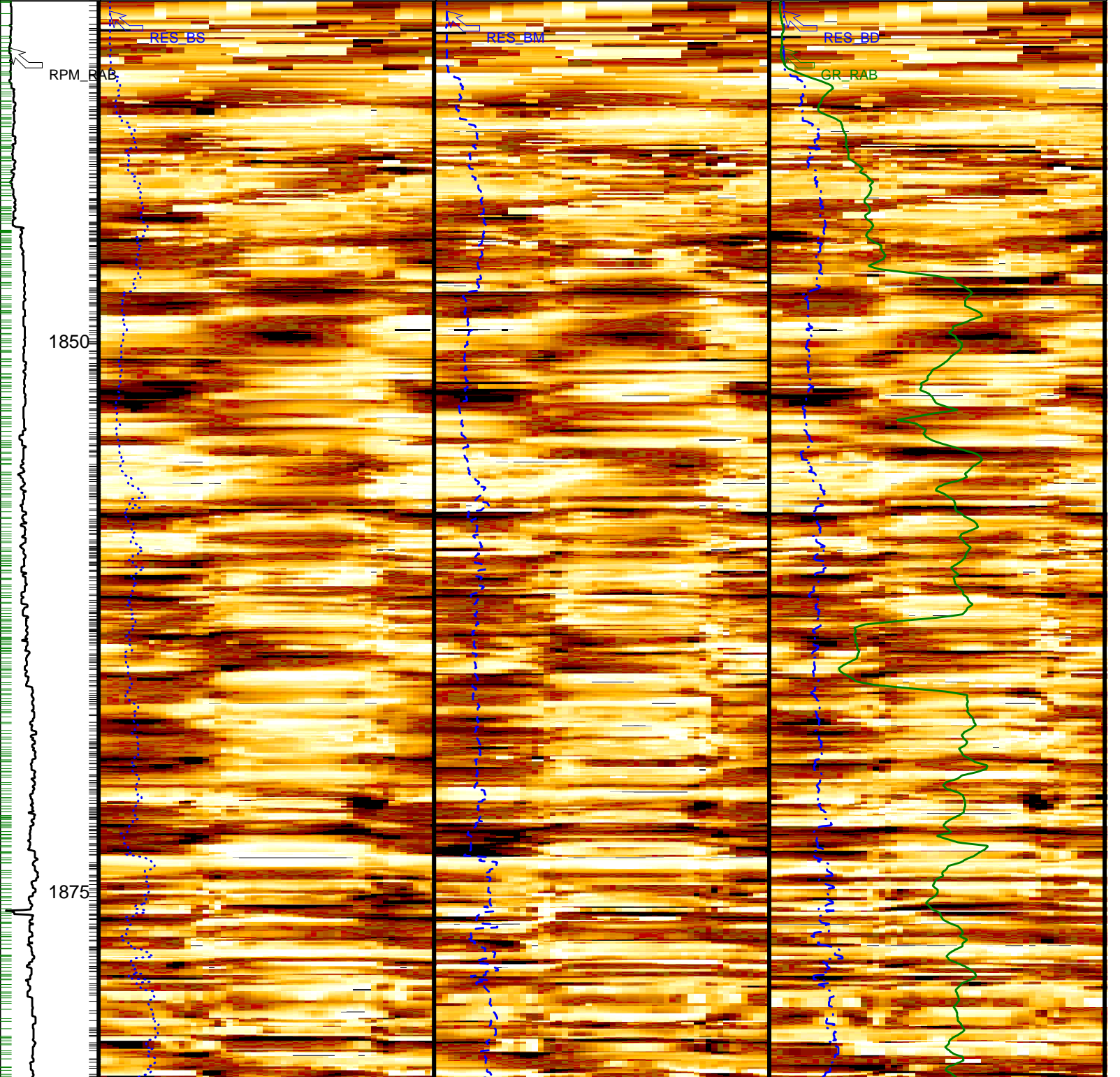
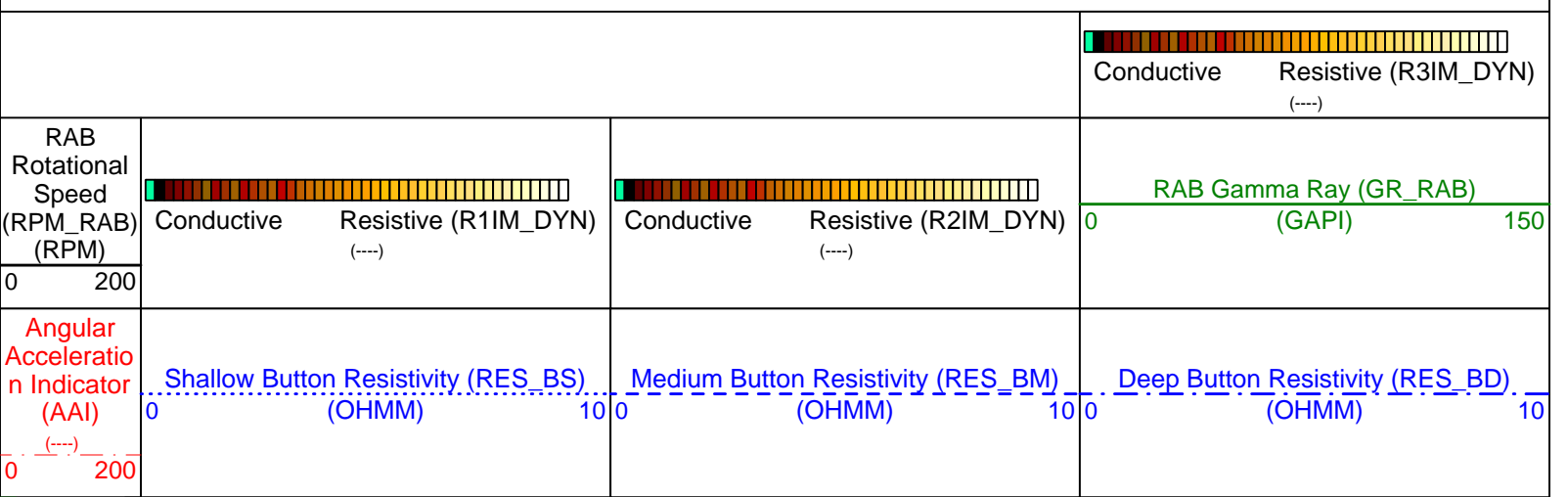
Gamma Ray Samples

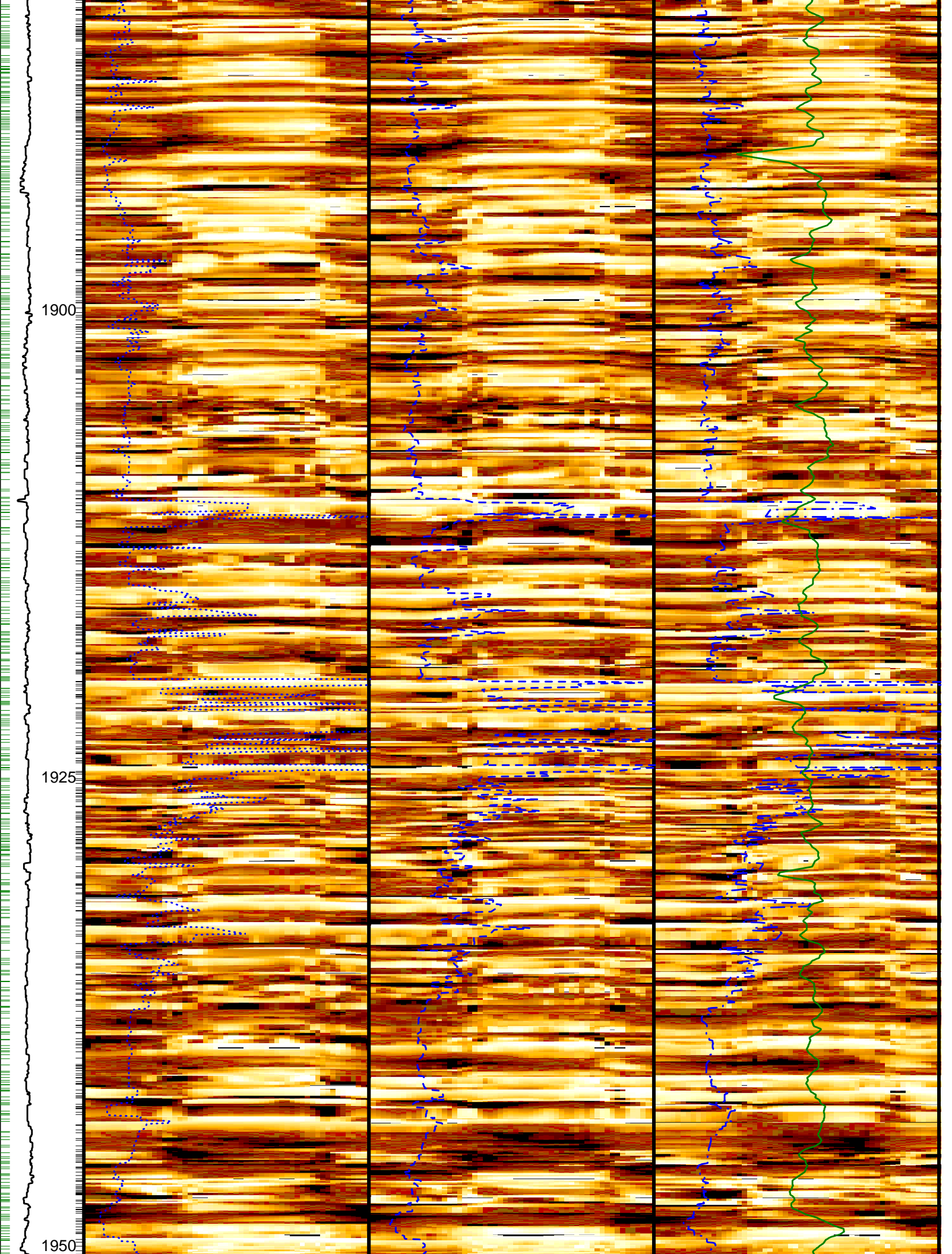
Ring Samples

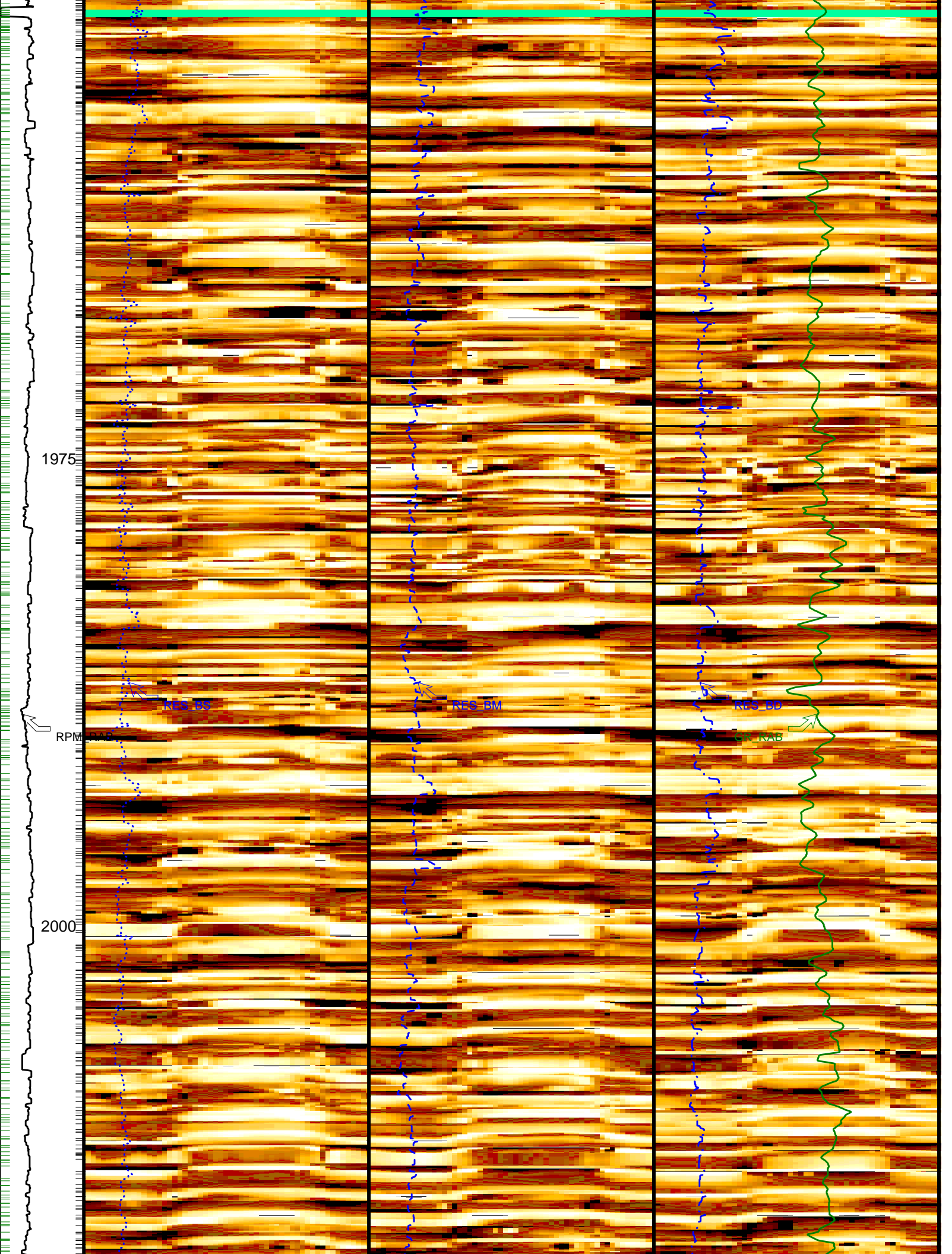
IDEAL Version: ID10_2B_08
IDF

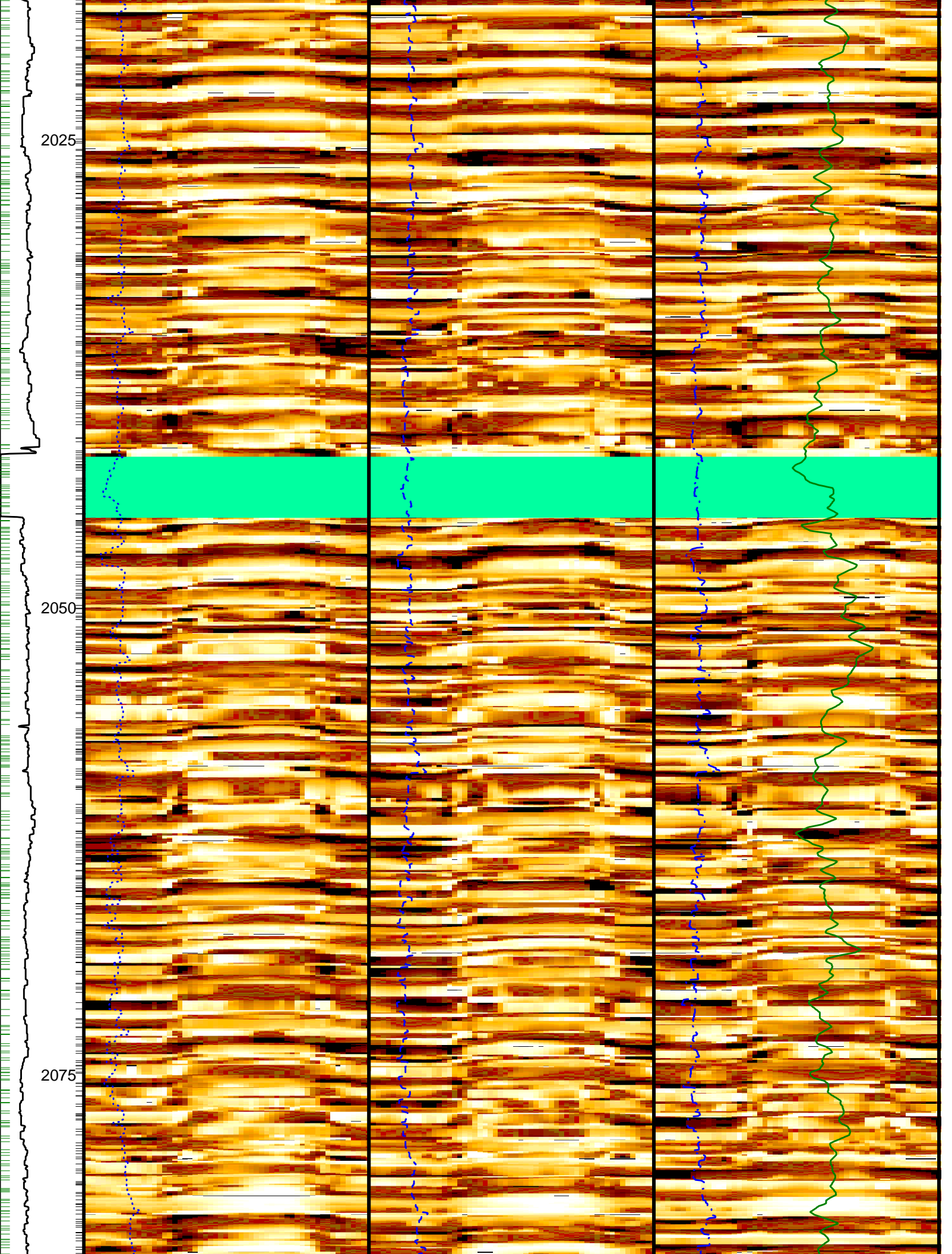
IDEAL Version: ID10_2B_08
IDF

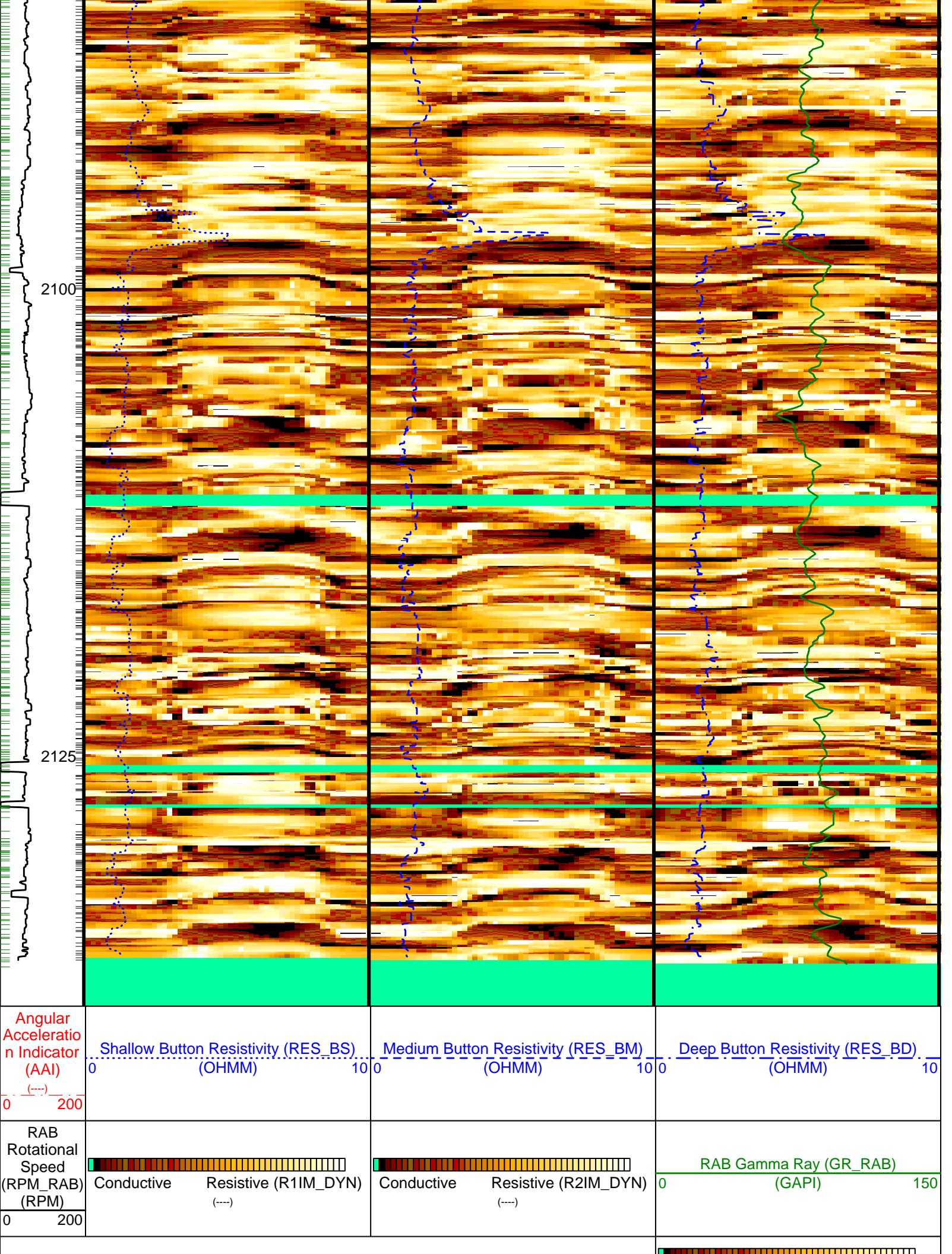
Ring Samples
Gamma Ray Samples











PIP SUMMARY

— Ring Samples
— Gamma Ray Samples

IDEAL Version: ID10_2B_08
IDF

Company: Lamont-Doherty Borehole Research

Schlumberger

Well: IODP Expedition 311 CAS-03C
Field: Cascadia Margin
Rig: JOIDES Resolution
State: Pacific Ocean

GeoVISION Resistivity - Image
1:240 Measured Depth
Recorded Mode Log