

Tool Record Rates:
EcoScope Res, Density & Neutron @ 2 sec

Tool Software Version:
TeleScope: 9.0_C03 EcoScope: 11

Crew: L. Loh and D. Buster

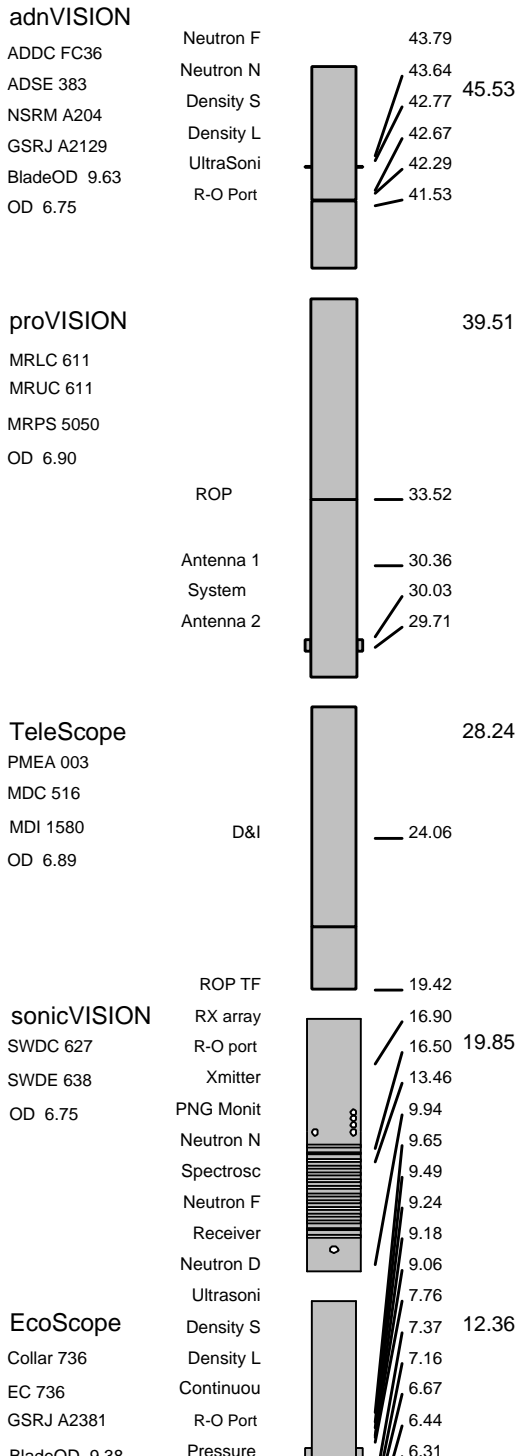
EQUIPMENT DESCRIPTION

RUN1

RUN

RUN

DOWNHOLE EQUIPMENT



Variable Name	Variable Description	Run Name & Value
---------------	----------------------	------------------

Run Number

1

General Information

BHT_RM	Bottom Hole Temperature (RM)	39.200001
BSAL_RM	Mud Salinity (RM)	0.000000
BS_RM	Bit Size (RM)	9.875000
COEF_M	User Defined FEXP in Clean Sand	1.650000
C_WS	Overpressure correction to Sw and M	1.000000
FEXP	Formation Factor Exponent(RM)	2.000000
FNUM	Formation Factor Enumerator(RM)	1.000000
FPHI_RM	Formation Factor Porosity Source (RM)	XPLOT
MST_RM	Mud Sample temperature (RM)	75.000000
MW_RM	Mud Weight (RM)	8.500000
OBMF_RM	Oil Based Mud (RM)	NO
RHOF_RM	Mud Filtrate Density (RM)	1.000000
RHOM_RM	Matrix density (RM)	2.650000
RMS_RM	Resistivity of Mud Sample (RM)	1.000000
RWA_COMP_M	Rwa computation model	BASIC
RWA_DEN_AD	Rwa Density Input ADN	RHOB
RWA_DEN_CD	Rwa Density Input CDN	RHOB
RWA_DEN_IN	Rwa Density Input	RHOB
RWA_FORM_M	Rwa computation formation model	CLASTIC
RWA_RES_IN	Rwa computation resistivity input	RT
RWS_RM	Resistivity of Connate Water (RM)	1.000000
SHT_RM	Surface Hole Temperature (RM)	15.000000
TD_RM	Total Measured Depth (RM)	5357.600098
TWS_RM	Temperature of Connate Water (RM)	75.000000
VF_ILLI	Fraction of illite in shales	0.500000
VF_KAOL	Fraction of kaolinite in shales	0.500000
VF_MONT	Fraction of montmorillonite in shales	0.000000
XPDM_RM	Cross plot density porosity multiplier	0.675000
XPNM_RM	Cross plot neutron porosity multiplier	0.325000

DVD

LWD_RM/STATION_FILE/PARAMETER	Station Time-frame file name	Station
-----	-----Density Parameter-----	-----Density
-----	-----Neutron Parameter-----	-----Neutron
-----	-----Interpretation Parameter-----	-----Interpretation
-----	-----Sigma Parameter-----	-----Sigma
A12A	ARC Air Cal Attenuation From T1 at 2 MHz	8.096470
A14A	ARC Air Cal Attenuation From T1 at 400 KHz	8.154540
A22A	ARC Air Cal Attenuation From T2 at 2 MHz	6.357980
A24A	ARC Air Cal Attenuation From T2 at 400 KHz	6.313930
A32A	ARC Air Cal Attenuation From T3 at 2 MHz	4.697780
A34A	ARC Air Cal Attenuation From T3 at 400 KHz	4.754960
A42A	ARC Air Cal Attenuation From T4 at 2 MHz	4.759350
A44A	ARC Air Cal Attenuation From T4 at 400 KHz	4.713040
A52A	ARC Air Cal Attenuation From T5 at 2 MHz	3.258230
A54A	ARC Air Cal Attenuation From T5 at 400 KHz	3.315620
ABNT	Abnormal Transmitter Indicator	No_Tx_Failed
ALPHA_DEN	Density Enhanced Vertical Resolution Processing Switch	YES
ANISO_COMP	Anisotropy Computation Option	YES
ATMP_ARC	ARC Select Temperature Channel	Annulus_Temp
AZMF	Formation DIP Azimuth	0.000000
BH_COMPUTE	Borehole Inversion Computation Option	YES
CALG	DVDM Gamma Ray Cal Gain Factor	-1.000000
CDPTH_ARC	Process Start Depth	100.000000
DEVI	Well Section Deviation	0.100000
DIELEC_COM	Dielectric Computation Option	YES
DIPF	Formation DIP Angle	0.000000
DVDM DHS	DVDM Down Hole Software Version	0.000000
DYN_IMAGE	Generate Dynamic Normalized Image?	YES
EDPTH	Wizard Process Stop Depth	50000
EN_WIZARD	Enable ARC Wizard Processing	NO
ERRCT	Percentage Error Cutoff	4.500000
EVRL	EVR Process averaging number of samples (RM)	49
FVVN	Firmware Version Number	1.100000
GCSE	Generalized Caliper Selection	BS
GRBC	RM: DVDM Gamma Ray Blanket (CPS)	75.000000
GRSH	GR Shale (Invasion Computation Cutoff)	1000.000000
GR_CF	Gamma Ray Correction Factor	2.250000
HIGH_BLEND	High Resistivity Threshold for Blending	2.000000
IDQT	Image Derived Quality Threshold	1.000000
IMAGE_MAX	Image Density Caliper Right Scale	8.000000
IMAGE_MAX	Image Density Quality Right Scale	1.000000
IMAGE_MAX	Image PEF(Segment) Right Scale	6.000000
IMAGE_MAX	Image RHOB(Segment) Right Scale	2.650000
IMAGE_MIN	Image Density Caliper Left Scale	2.000000
IMAGE_MIN	Image Density Quality Left Scale	0.000000
IMAGE_MIN	Image PEF(Segment) Left Scale	2.000000
IMAGE_MIN	Image RHOB(Segment) Left Scale	2.050000
IMAGE_ORIE	Image Orientation Options, e.g. Top of Hole or True North	NORTH
INCLIN_B0	ARC Bias Constant (mg)	0.000000
INCLIN_B1	ARC Bias First-order Coefficient (mg/degC)	0.000000
INCLIN_B2	ARC Bias Second-order Coefficient (mg/degC)	0.000000
INCLIN_B3	ARC Bias Third-order Coefficient (mg/degC)	0.000000
INCLIN_C0	ARC Current Scale Factor Constant (mA/g)	1.000000
INCLIN_C1	ARC Scale First-order Coefficient (mA/g/degC)	0.000000
INCLIN_C2	ARC Scale Second-order Coefficient (mA/g/degC)	0.000000
INCLIN_C3	ARC Scale Third-order Coefficient (mA/g/degC)	0.000000

INVAS_COMP Invasiion Correction Option YES
 JSD Acquisition start date YES
 JSD_ARC ARC Acquisition start date YES
 LOW_BLEND Low Resistivity Threshold for Blending 1.000000
 MATR Rock Matrix for Neutron Porosity Corrections SANDSTONE
 MSWS ARC Wizard Model Switch Window 5.000000
 MULTIEFFEC Multi Effect Option YES
 NEU_DCOR_O Density Correction Source for Neutron Processing Average
 NEU_FTUBE_ Far Thermal Tube Selection Both
 NTIK_SEL Neutron Tick Channel Name FAZ1
 OACF O2 Activation Correction Factor (RM) 0.000000
 P12A ARC Air Cal Phase-Shift From T1 at 2 MHz 1.143270
 P14A ARC Air Cal Phase-Shift From T1 at 400 KHz 1.838910
 P22A ARC Air Cal Phase-Shift From T2 at 2 MHz -1.152680
 P24A ARC Air Cal Phase-Shift From T2 at 400 KHz -1.826430
 P32A ARC Air Cal Phase-Shift From T3 at 2 MHz 1.064520
 P34A ARC Air Cal Phase-Shift From T3 at 400 KHz 1.835500
 P42A ARC Air Cal Phase-Shift From T4 at 2 MHz -1.202580
 P44A ARC Air Cal Phase-Shift From T4 at 400 KHz -1.845070
 P52A ARC Air Cal Phase-Shift From T5 at 2 MHz 1.092880
 P54A ARC Air Cal Phase-Shift From T5 at 400 KHz 1.844270
 PMUD Potassium Concentration in Mud 0.000000
 POFFSET Pressure Offset 0.000000
 PRTD Preferred Resistivity Log for Rt Display while Multi-Effects P34B
 PSOF_ADJ_T ARC: User Input Phase offset 0.000000
 RESTIK ARC resistivity tick source Phase
 SDPTH Wizard Process Start Depth 100
 SIG_PCOR_O Porosity Correction Source for Sigma Processing Best
 SPEC_CSG_D Casing Depth for Spectroscopy Processing 100.000000
 SPL_CLAY_M SpectroLith Clay Model ARENITE
 SPL_COAL_O SpectroLith Coal Processing Option NONE
 SPL_SULFUR SpectroLith Sulfur Mineral Option ANHYDRITE
 STAB_SIZE Stabilizer Size 9.375000
 STO_H Density Top of Hole Sector (Left Boundary) SECTOR_0
 TRNO Tool Run Number 5357.600098
 TSIZ_ARC ARC Tool Size 6.900000
 TSNO Tool Serial Number 6.900000
 UNIFORM_CO Uniform Rock Option YES
 VERS_ARC ARC Down hole software version Number 1.100000
 WRK Way to Report Potassium Concentration K_by_Wgt_%
 WSDI Window Size of Dynamic Normalization Image 50.000000

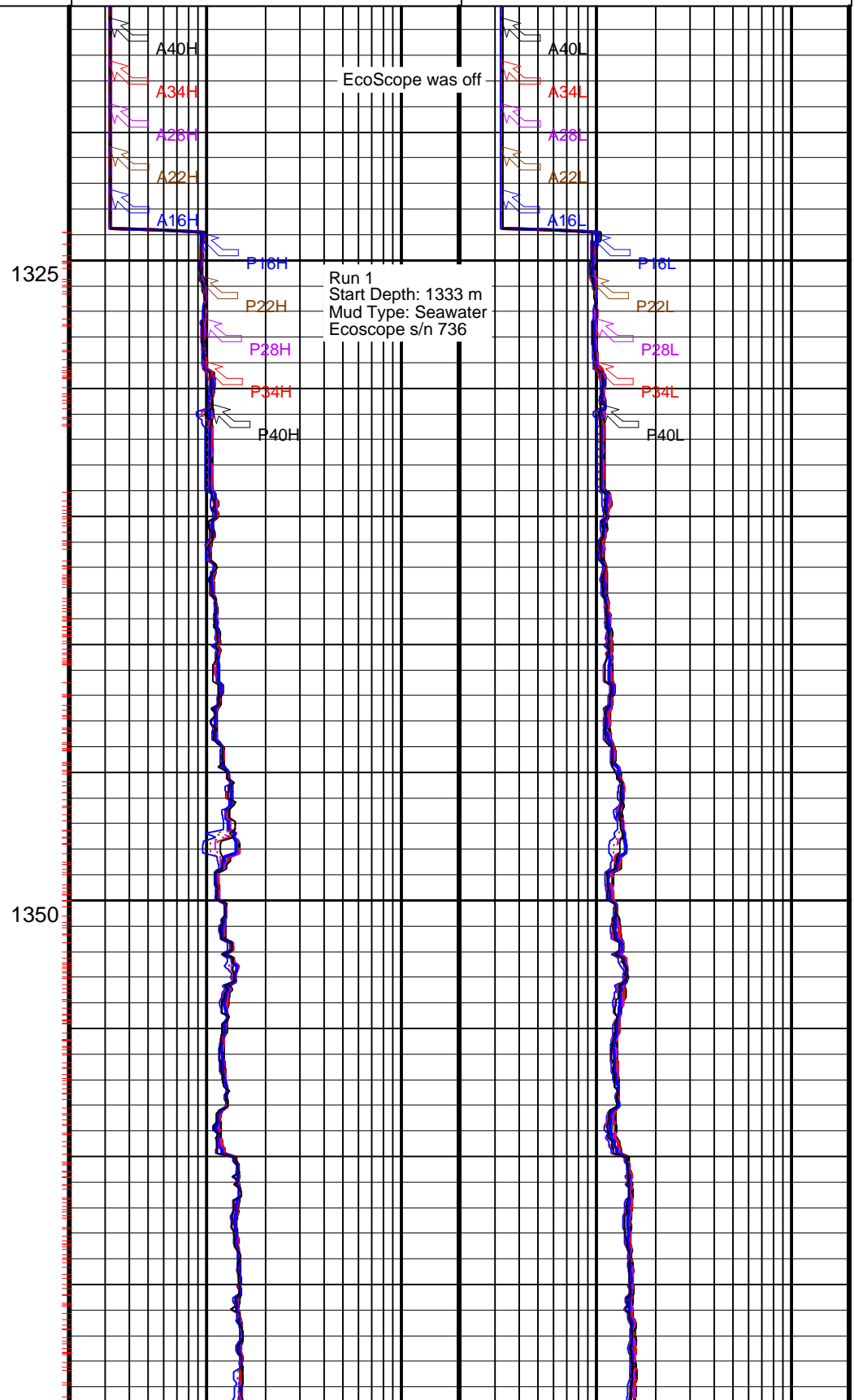
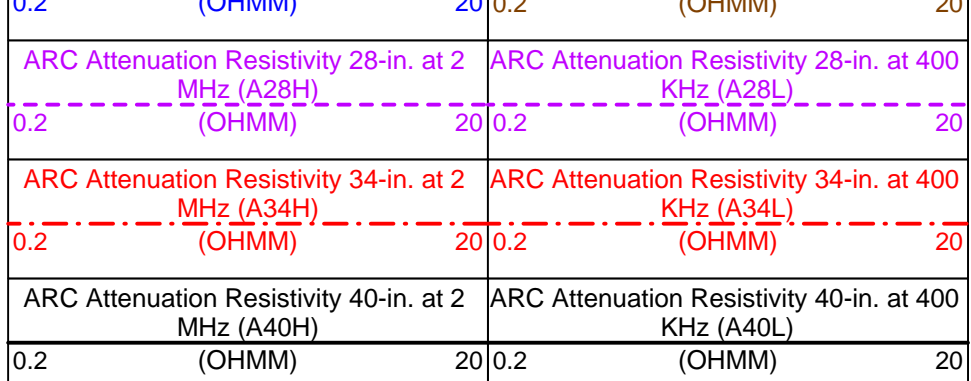
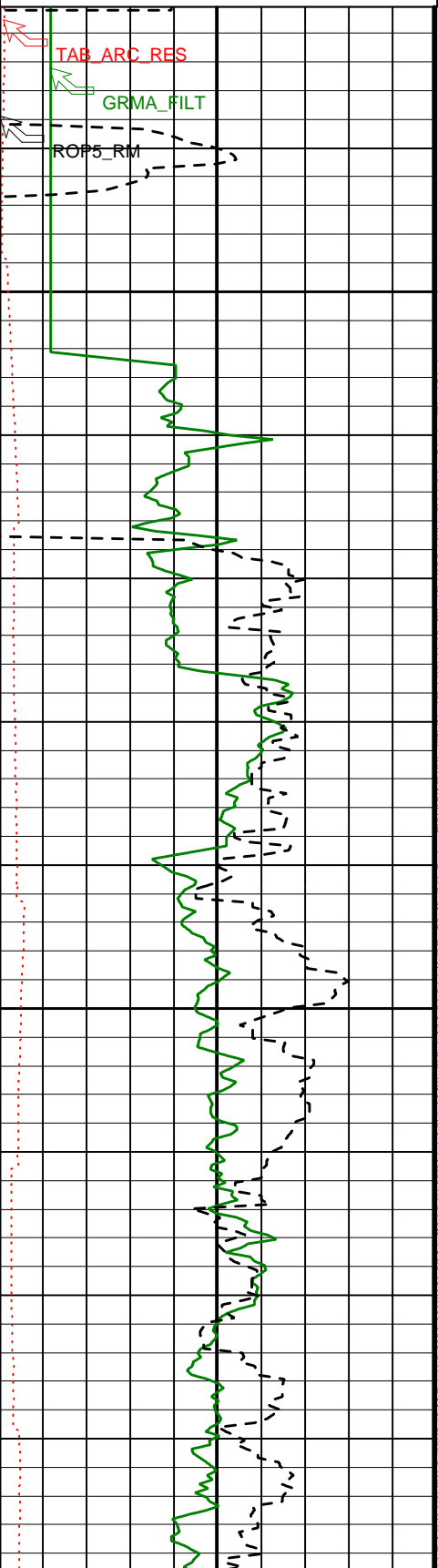
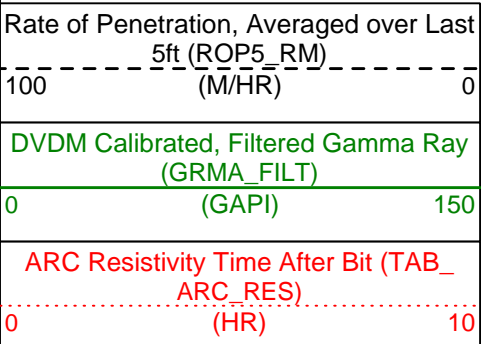
IDEAL Version: ID10_2B_08
IDF

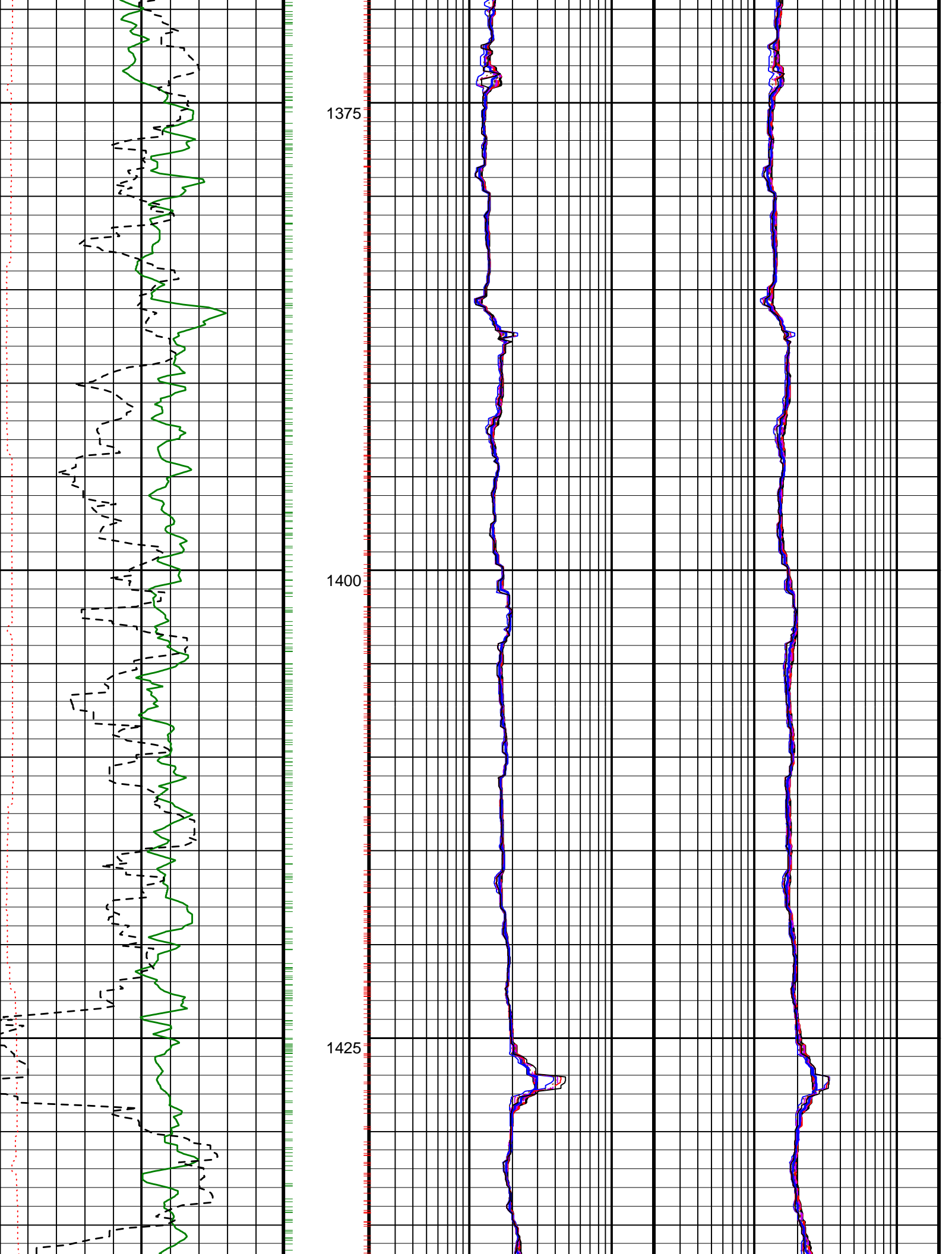
Format: 5 MD ARC DUAL FREQ Vertical Scale: 1:240 Graphics File Created: 02-Oct-2005 11:37

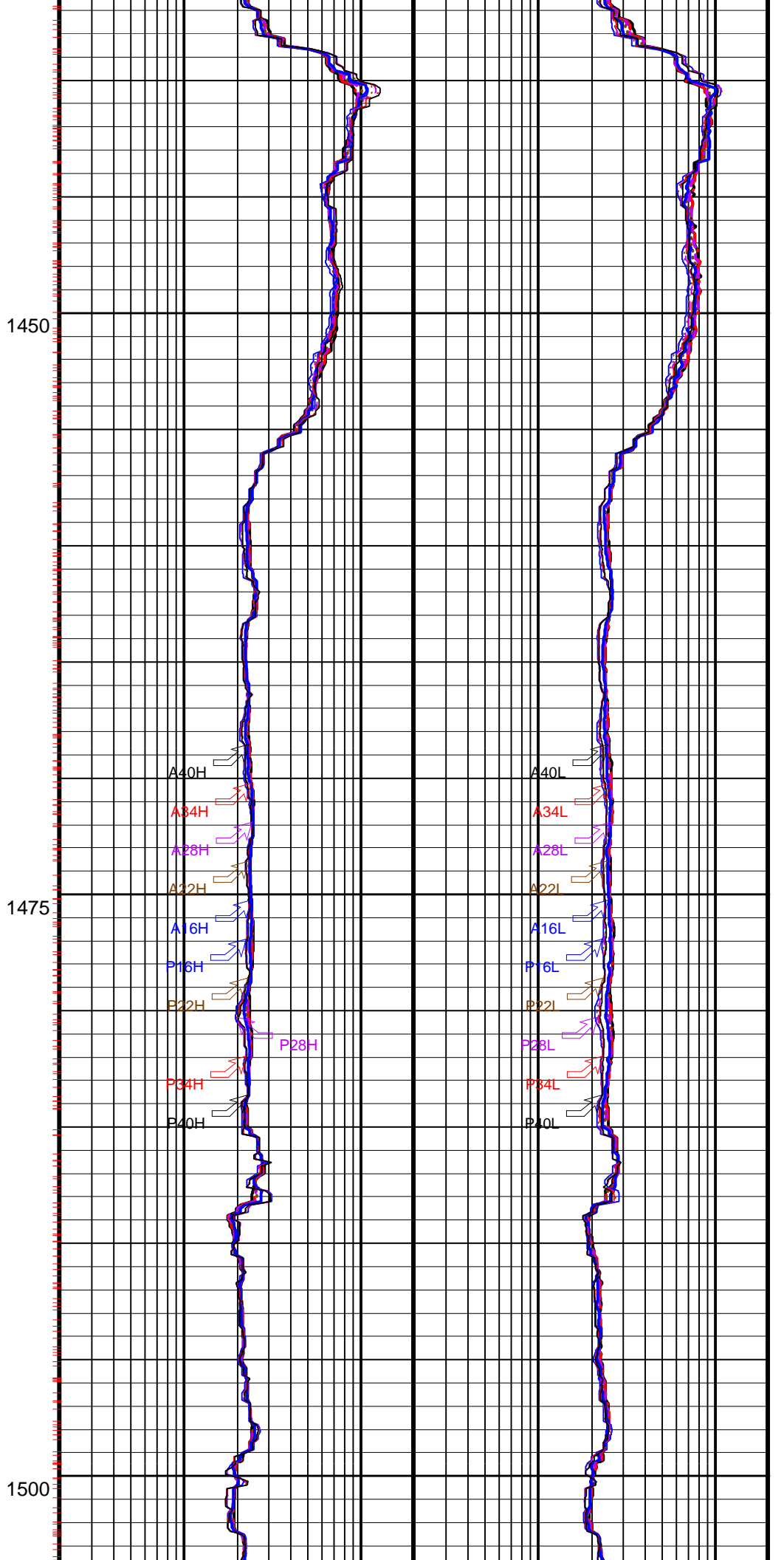
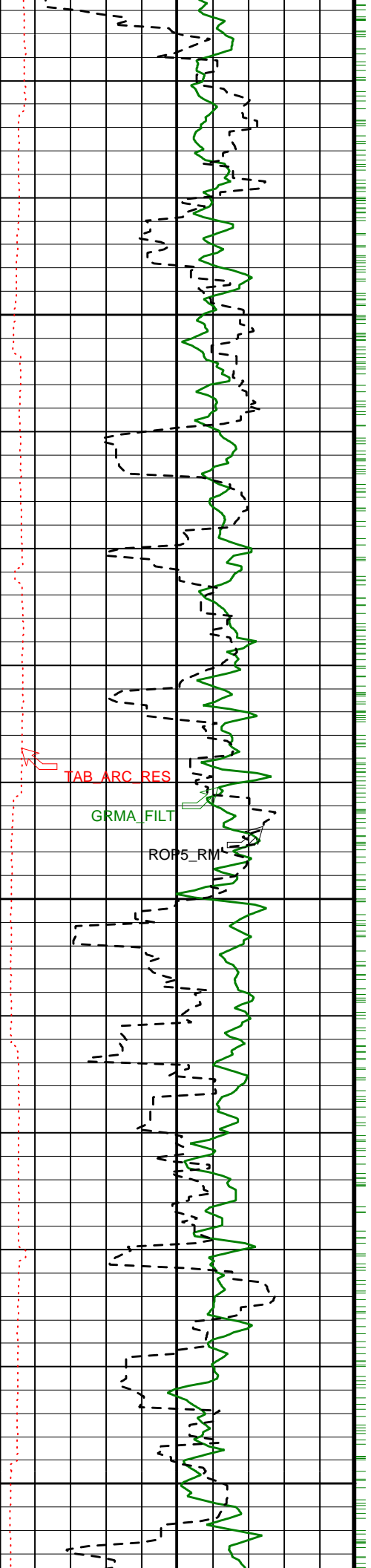
PIP SUMMARY

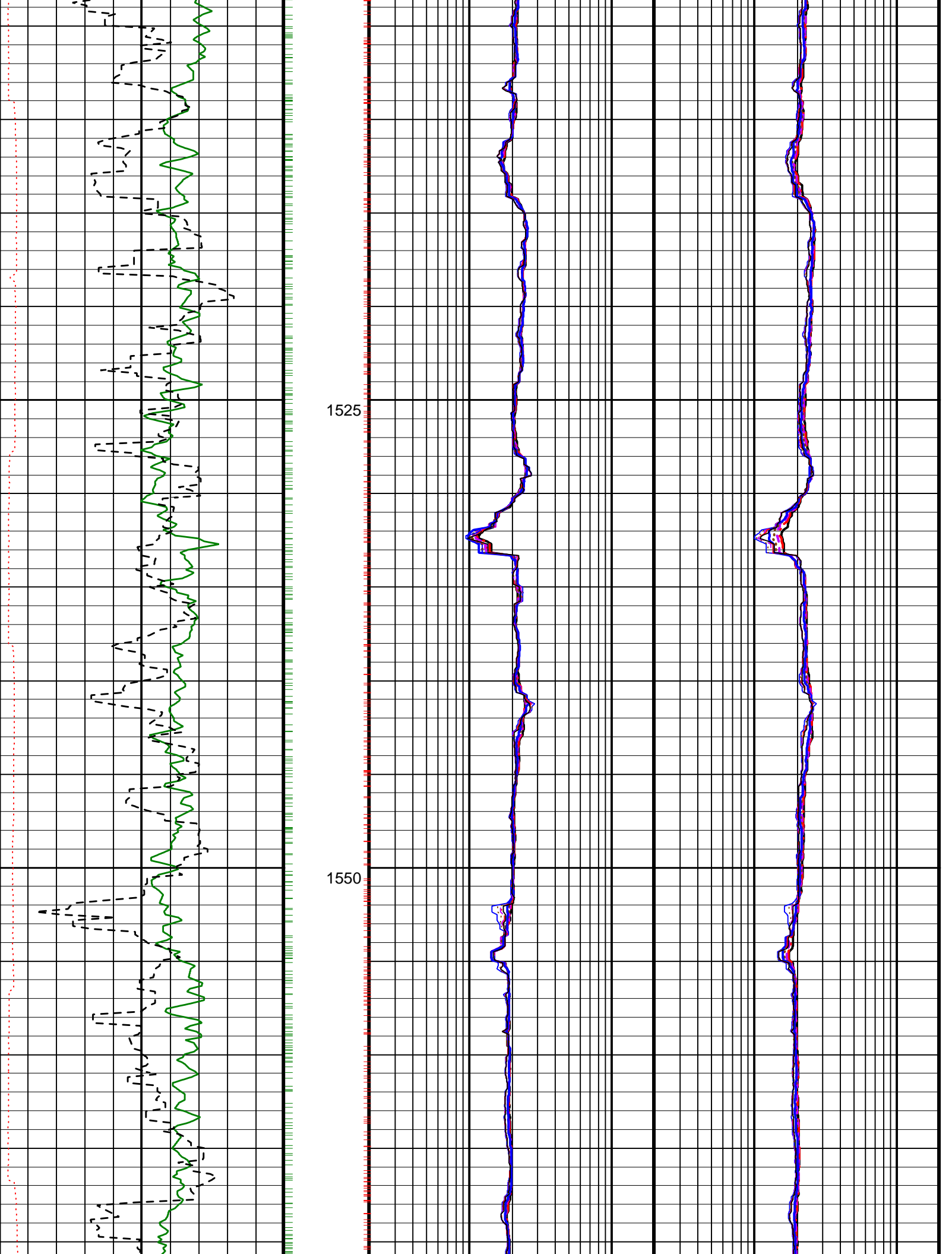
+ ARC Resistivity Samples
 - DVDM Gamma Ray Samples

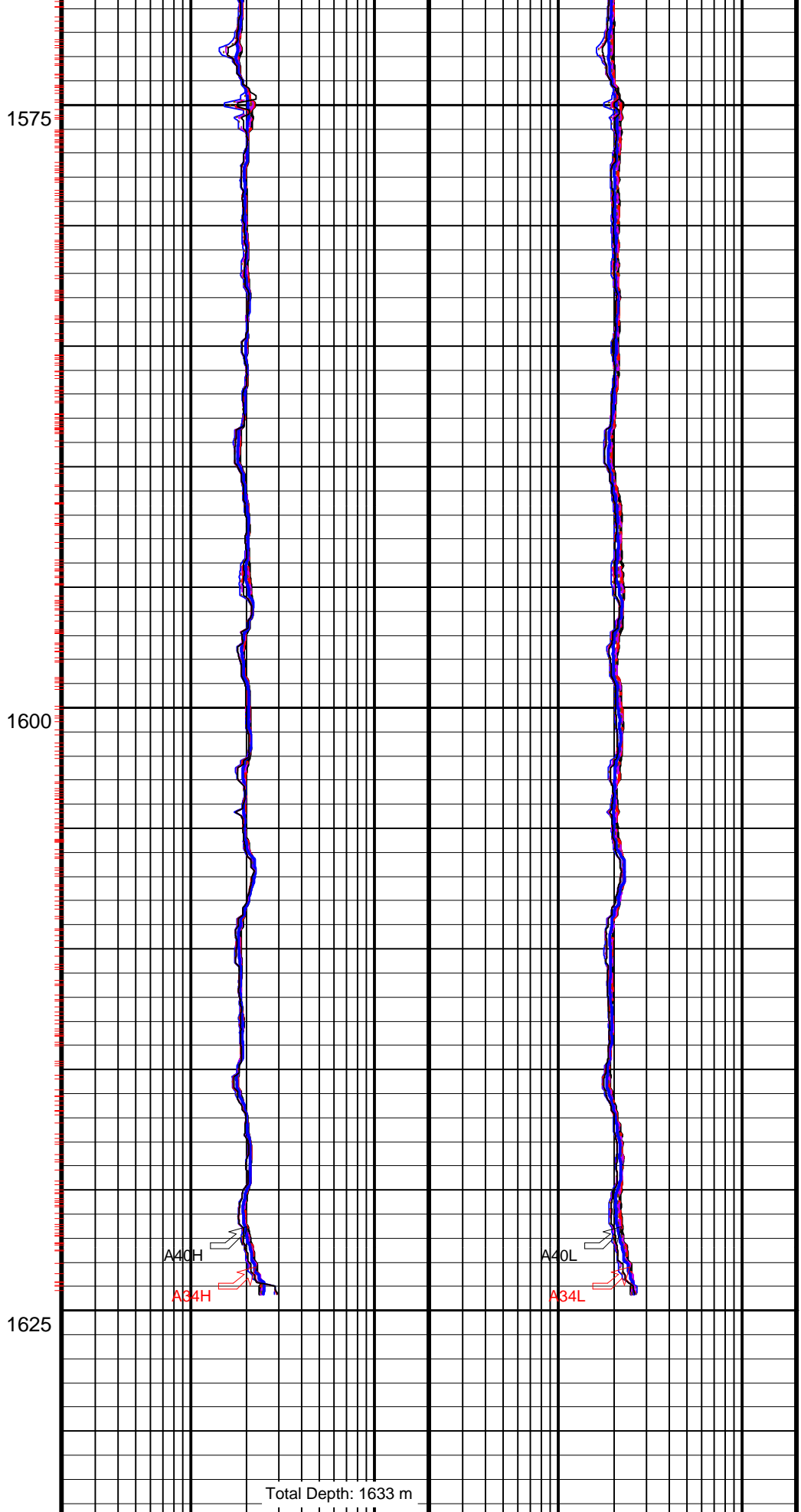
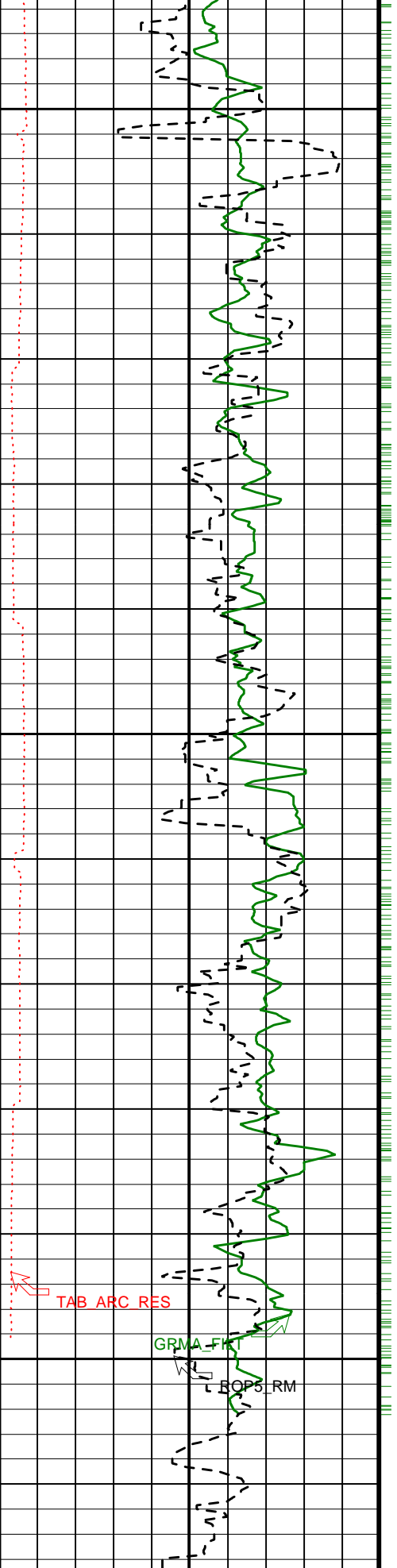
ARC Attenuation Resistivity 16-in. at 2 MHz (A16H)	ARC Phase-Shift Resistivity 40-in. at 400 KHz (P40L)
0.2 (OHMM) 20	0.2 (OHMM) 20
ARC Attenuation Resistivity 22-in. at 2 MHz (A22H)	ARC Phase-Shift Resistivity 34-in. at 400 KHz (P34L)
0.2 (OHMM) 20	0.2 (OHMM) 20
ARC Phase-Shift Resistivity 40-in. at 2 MHz (P40H)	ARC Phase-Shift Resistivity 28-in. at 400 KHz (P28L)
0.2 (OHMM) 20	0.2 (OHMM) 20
ARC Phase-Shift Resistivity 34-in. at 2 MHz (P34H)	ARC Phase-Shift Resistivity 22-in. at 400 KHz (P22L)
0.2 (OHMM) 20	0.2 (OHMM) 20
ARC Phase-Shift Resistivity 28-in. at 2 MHz (P28H)	ARC Phase-Shift Resistivity 16-in. at 400 KHz (P16L)
0.2 (OHMM) 20	0.2 (OHMM) 20
ARC Phase-Shift Resistivity 22-in. at 2 MHz (P22H)	ARC Attenuation Resistivity 16-in. at 400 KHz (A16L)
0.2 (OHMM) 20	0.2 (OHMM) 20
ARC Phase-Shift Resistivity 16-in. at 2 MHz (P16H)	ARC Attenuation Resistivity 22-in. at 400 KHz (A22L)
0.2 (OHMM) 20	0.2 (OHMM) 20











Total Depth: 1633 m

ARC Resistivity Time After Bit (TAB_ARC_RES)
 (HR) 0 10

ARC Attenuation Resistivity 40-in. at 2 MHz (A40H)
 (OHMM) 0.2 20

ARC Attenuation Resistivity 40-in. at 400 KHz (A40L)
 (OHMM) 0.2 20

DVDM Calibrated, Filtered Gamma Ray

ARC Attenuation Resistivity 34-in. at 2

ARC Attenuation Resistivity 34-in. at 400

DVDM Calibrated, Filtered Gamma Ray (GRMA_FILT)		
0	(GAPI)	150
Rate of Penetration, Averaged over Last 5ft (ROP5_RM)		
100	(M/HR)	0

ARC Attenuation Resistivity 34-in. at 2 MHz (A34H) (OHMM)	0.2	20	ARC Attenuation Resistivity 34-in. at 400 KHz (A34L) (OHMM)	0.2	20
ARC Attenuation Resistivity 28-in. at 2 MHz (A28H) (OHMM)	0.2	20	ARC Attenuation Resistivity 28-in. at 400 KHz (A28L) (OHMM)	0.2	20
ARC Phase-Shift Resistivity 16-in. at 2 MHz (P16H) (OHMM)	0.2	20	ARC Attenuation Resistivity 22-in. at 400 KHz (A22L) (OHMM)	0.2	20
ARC Phase-Shift Resistivity 22-in. at 2 MHz (P22H) (OHMM)	0.2	20	ARC Attenuation Resistivity 16-in. at 400 KHz (A16L) (OHMM)	0.2	20
ARC Phase-Shift Resistivity 28-in. at 2 MHz (P28H) (OHMM)	0.2	20	ARC Phase-Shift Resistivity 16-in. at 400 KHz (P16L) (OHMM)	0.2	20
ARC Phase-Shift Resistivity 34-in. at 2 MHz (P34H) (OHMM)	0.2	20	ARC Phase-Shift Resistivity 22-in. at 400 KHz (P22L) (OHMM)	0.2	20
ARC Phase-Shift Resistivity 40-in. at 2 MHz (P40H) (OHMM)	0.2	20	ARC Phase-Shift Resistivity 28-in. at 400 KHz (P28L) (OHMM)	0.2	20
ARC Attenuation Resistivity 22-in. at 2 MHz (A22H) (OHMM)	0.2	20	ARC Phase-Shift Resistivity 34-in. at 400 KHz (P34L) (OHMM)	0.2	20
ARC Attenuation Resistivity 16-in. at 2 MHz (A16H) (OHMM)	0.2	20	ARC Phase-Shift Resistivity 40-in. at 400 KHz (P40L) (OHMM)	0.2	20

PIP SUMMARY

- ARC Resistivity Samples
- DVDM Gamma Ray Samples

IDEAL Version: ID10_2B_08
IDF

EcoScope Integrated Logging-While-Drilling Tool - 6.75 inch / Equipment Identification

Primary Equipment: Tool Name and Serial Number	ECO - 675	736
Calibration Status	ADDC - AA	
Collar Type and Serial Number	ADSE - EA	
Chassis Type and Serial Number	ADCS - CA	
Stabilizer Type and Serial Number	NSR - M	
Neutron Logging Source	GSR - J/Z	
Density Logging Source	9.38 - in.	
Stabilizer Size		

Master: 22-Jul-2005 12:37					
EcoScope Integrated Logging-While-Drilling Tool - 6.75 inch Calibration					
SSn LSn : Water Tank					
Phase	SSn Gain	Value	Phase	SSn Offset	Value
Master		1.000	Master		0
	0.6000 (Minimum) 1.000 (Nominal) 1.400 (Maximum)			-3.000 (Minimum) 0 (Nominal) 3.000 (Maximum)	
Phase	LSn Gain	Value	Phase	LSn Offset	Value
Master		1.000	Master		0
	0.6000 (Minimum) 1.000 (Nominal) 1.400 (Maximum)			-3.000 (Minimum) 0 (Nominal) 3.000 (Maximum)	

Master: 22-Jul-2005 12:37					
EcoScope Integrated Logging-While-Drilling Tool - 6.75 inch Calibration					
Neutron: Water Tank					
Phase	Far 2 Gain	Value	Phase	Far 2 Offset	Value

Master		1.056	Master		-0.7620		
0.7000 (Minimum)	1.000 (Nominal)	1.300 (Maximum)	-3.000 (Minimum)	0 (Nominal)	3.000 (Maximum)		
Phase	Far 1 Gain		Value	Phase	Far 1 Offset		Value
Master		1.055	Master		-0.4690		
0.7000 (Minimum)	1.000 (Nominal)	1.300 (Maximum)	-3.000 (Minimum)	0 (Nominal)	3.000 (Maximum)		
Phase	Thermal Near gain		Value	Phase	Thermal Near offset		Value
Master		1.155	Master		-137.6		
0.7000 (Minimum)	1.000 (Nominal)	1.300 (Maximum)	-500.0 (Minimum)	0 (Nominal)	500.0 (Maximum)		
Phase	Epithermal Near gain		Value	Phase	Eptithermal Near offset		Value
Master		1.221	Master		-13.57		
0.7000 (Minimum)	1.000 (Nominal)	1.300 (Maximum)	-300.0 (Minimum)	0 (Nominal)	300.0 (Maximum)		

Master: Calibration out of date 11-Apr-2005 19:14

EcoScope Integrated Logging-While-Drilling Tool - 6.75 inch Calibration

Gamma Density: Magnesium Block

Phase	LS window 3 - Mg CPS	Value	Phase	SS window 1 - Mg CPS	Value	Phase	SS window 3 - Mg CPS	Value
Master		2041	Master		5077	Master		11910
1000 (Minimum)	2000 (Nominal)	3000 (Maximum)	2500 (Minimum)	5250 (Nominal)	8000 (Maximum)	6000 (Minimum)	12000 (Nominal)	18000 (Maximum)

Master: Calibration out of date 11-Apr-2005 19:14

EcoScope Integrated Logging-While-Drilling Tool - 6.75 inch Calibration

Gamma Density: Aluminum Block

Phase	LS window 3 - Al CPS	Value	Phase	SS window 1 - Al CPS	Value	Phase	SS window 3 - Al CPS	Value
Master		372.3	Master		2692	Master		8750
200.0 (Minimum)	400.0 (Nominal)	600.0 (Maximum)	1500 (Minimum)	3000 (Nominal)	4500 (Maximum)	4000 (Minimum)	8500 (Nominal)	13000 (Maximum)

Master: Calibration date not found

EcoScope Integrated Logging-While-Drilling Tool - 6.75 inch Calibration

Gamma Density: Background

Phase	LS window 3 - Background CPS	Value	Phase	SS window 1 - Background CPS	Value	Phase	SS window 3 - Background CPS	Value
Master		57.82	Master		85.68	Master		413.0
50.00 (Minimum)	70.00 (Nominal)	90.00 (Maximum)	50.00 (Minimum)	75.00 (Nominal)	100.0 (Maximum)	270.0 (Minimum)	370.0 (Nominal)	470.0 (Maximum)

Master: Calibration date not found

EcoScope Integrated Logging-While-Drilling Tool - 6.75 inch Calibration

Gamma Density: Water Block Check

Phase	Long spacing water density G/C3	Value	Phase	Short spacing water density G/C3	Value
Master		1.047	Master		1.262
0.9000 (Minimum)	1.150 (Nominal)	1.400 (Maximum)	0.9000 (Minimum)	1.150 (Nominal)	1.400 (Maximum)

Master: Calibration date not found

EcoScope Integrated Logging-While-Drilling Tool - 6.75 inch Calibration

Resistivity: Air

Phase	Phase-Shift T1	Value	Phase	Phase-Shift T2	Value	Phase	Phase-Shift T3	Value
Master		1.143	Master		-1.153	Master		1.065
-4.000 (Minimum)	0 (Nominal)	4.000 (Maximum)	-4.000 (Minimum)	0 (Nominal)	4.000 (Maximum)	-4.000 (Minimum)	0 (Nominal)	4.000 (Maximum)
Phase	Phase-Shift T4	Value	Phase	Phase-Shift T5	Value	Phase	Phase-Shift T1 at 400KHz	Value
Master		-1.203	Master		1.093	Master		1.839
-4.000 (Minimum)	0 (Nominal)	4.000 (Maximum)	-4.000 (Minimum)	0 (Nominal)	4.000 (Maximum)	-4.000 (Minimum)	0 (Nominal)	4.000 (Maximum)
Phase	Phase-Shift T2 at 400KHz	Value	Phase	Phase-Shift T3 at 400KHz	Value	Phase	Phase-Shift T4 at 400KHz	Value
Master		-1.826	Master		1.836	Master		-1.845
-4.000 (Minimum)	0 (Nominal)	4.000 (Maximum)	-4.000 (Minimum)	0 (Nominal)	4.000 (Maximum)	-4.000 (Minimum)	0 (Nominal)	4.000 (Maximum)
Phase	Phase-Shift T5 at 400KHz	Value						
Master		1.844						
-4.000 (Minimum)	0 (Nominal)	4.000 (Maximum)						

-4.000 (Minimum)	0 (Nominal)	4.000 (Maximum)
---------------------	----------------	--------------------

Master: Calibration date not found											
EcoScope Integrated Logging-While-Drilling Tool - 6.75 inch Calibration											
Resistivity: Air											
Phase	Attenuation T1		Value	Phase	Attenuation T2		Value	Phase	Attenuation T3		Value
Master			8.096	Master			6.358	Master			4.698
	7.000 (Minimum)	9.000 (Nominal)	11.00 (Maximum)		4.000 (Minimum)	6.000 (Nominal)	8.000 (Maximum)		3.500 (Minimum)	5.500 (Nominal)	7.500 (Maximum)
Phase	Attenuation T4		Value	Phase	Attenuation T5		Value	Phase	Attenuation T1 at 400KHz		Value
Master			4.759	Master			3.258	Master			8.155
	2.500 (Minimum)	4.500 (Nominal)	6.500 (Maximum)		2.000 (Minimum)	4.000 (Nominal)	6.000 (Maximum)		7.000 (Minimum)	9.000 (Nominal)	11.00 (Maximum)
Phase	Attenuation T2 at 400KHz		Value	Phase	Attenuation T3 at 400KHz		Value	Phase	Attenuation T4 at 400KHz		Value
Master			6.314	Master			4.755	Master			4.713
	4.000 (Minimum)	6.000 (Nominal)	8.000 (Maximum)		3.500 (Minimum)	5.500 (Nominal)	7.500 (Maximum)		2.500 (Minimum)	4.500 (Nominal)	6.500 (Maximum)
Phase	Attenuation T5 at 400KHz		Value								
Master			3.316								
	2.000 (Minimum)	4.000 (Nominal)	6.000 (Maximum)								

Master: Calibration date not found		
EcoScope Integrated Logging-While-Drilling Tool - 6.75 inch Calibration		
Gamma Ray: Blanket		
Phase	Gamma ray factor	Value
Master		2.250
	2.000 (Minimum)	2.500 (Nominal)
		3.000 (Maximum)

Company: Lamont-Doherty Borehole Research

Well: IODP Expedition 311 CAS-01B

Field: Cascadia Margin

Rig: JOIDES Resolution

State: Pacific Ocean

EcoScope Resistivity - Dual Frequency
1:240 Measured Depth
Recorded Mode Log

