

Company: Lamont-Doherty Borehole Research

Well: IODP Expedition 311 CAS-01B

Field: Cascadia Margin

Rig: JOIDES Resolution State: Pacific Ocean

Rig: JOIDES Resolution
Field: Cascadia Margin
Location: Vancouver Island
Well: IODP Expedition 311 CAS-01B
Company: Lamont-Doherty Borehole Research

GeoVISION Resistivity 1:1200 Measured Depth Recorded Mode Log

Total depth:	1633 m	K.B.	10.06 m
Spud date:	23-Sep-2005	G.L.	-1323 m
Runs:	1 To 1	D.F.	9.60 m

Permanent datum: MEAN SEA LEVEL Elev.: 0 m
 Log measured from: Kelly Bushing 10.06 m above Perm. datum
 Depth reference: Driller's Depth

Service Order no.	NAD 27	Longitude	Latitude
40012416	UTM Zone 10 N	W 126.86540	N 48.69806

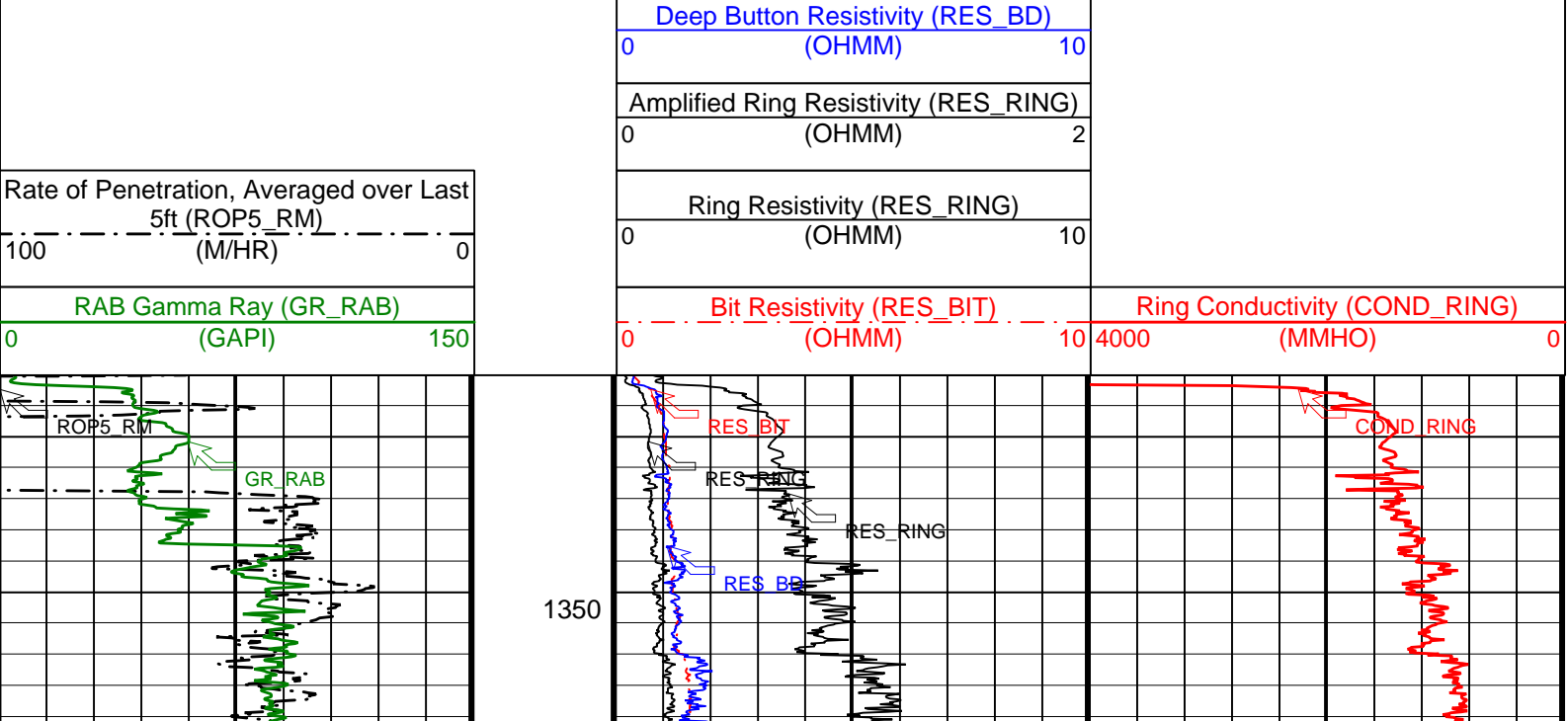
Depth logged: 1333 m To 1632 m Mag decl: 18.83 deg. Other services:
 Date logged: 23-Sep-05 To 24-Sep-05 Mag dip: 69.24 deg. EcoScope, sonicVISION, provision

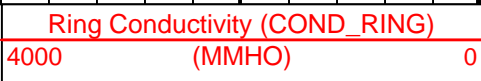
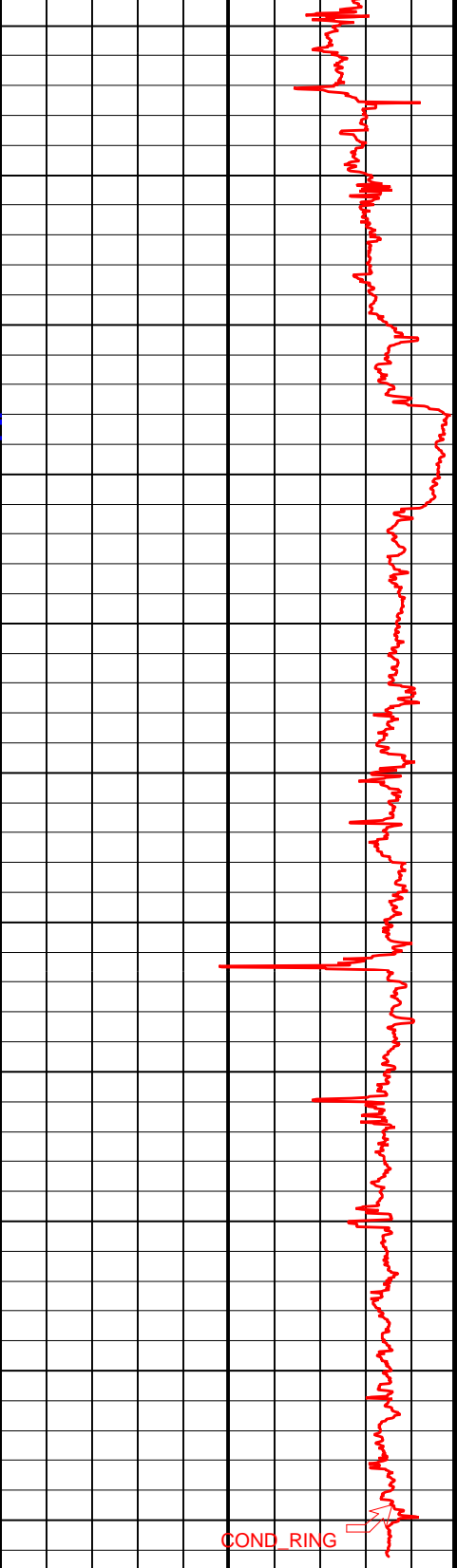
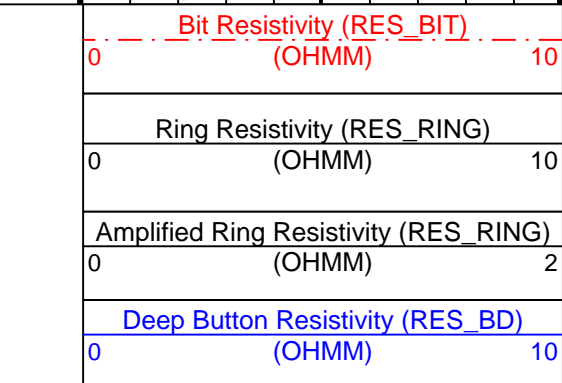
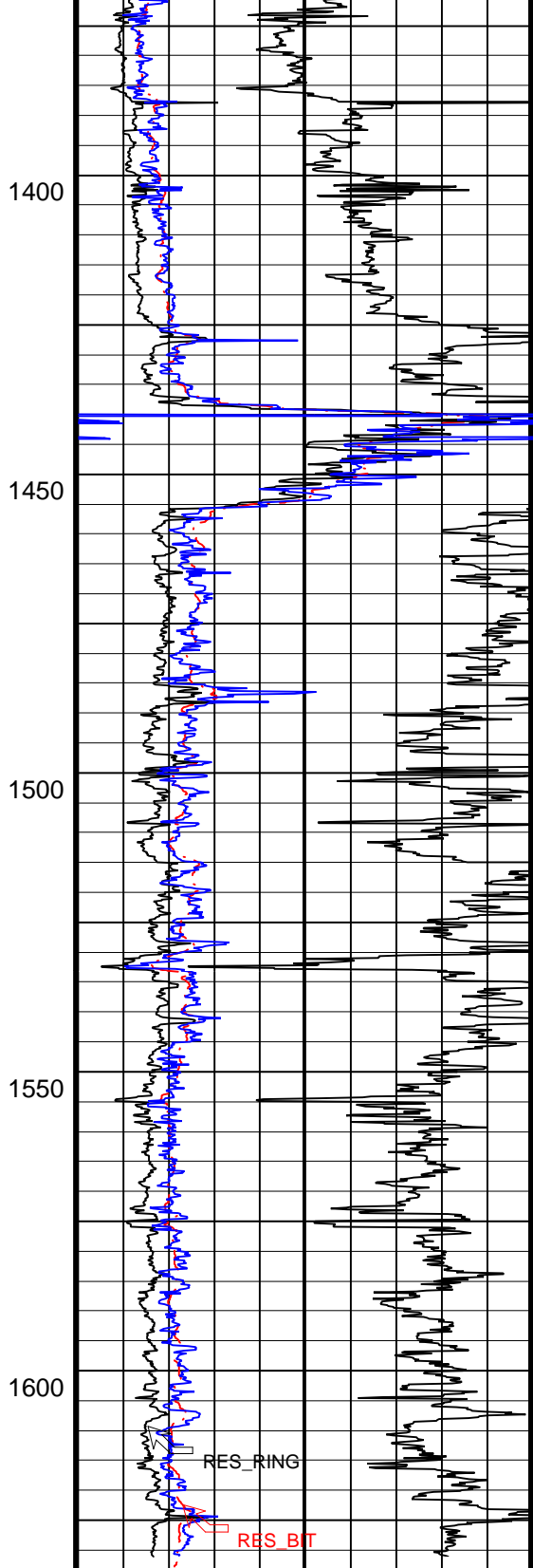
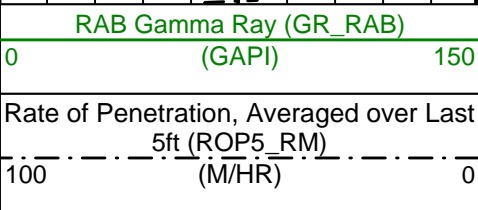
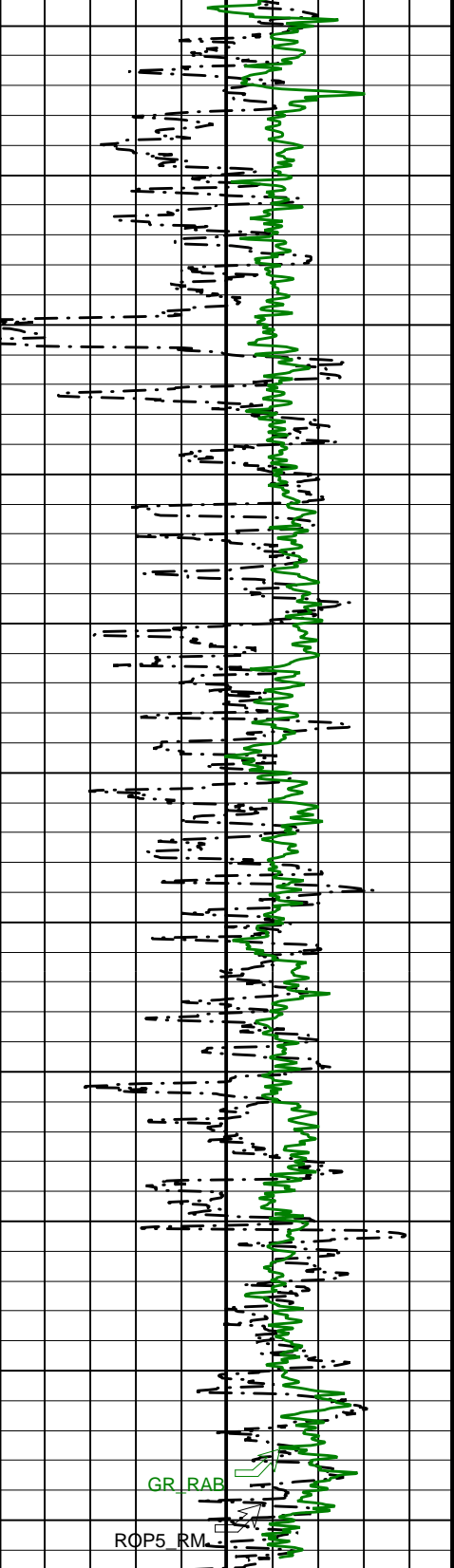
Bore hole record		Casing record				
Hole size	from	to	Size	Density	from	to
9.875 in.	1333 m	1633 m				
Mud record		Borehole deviation record				
Type	from	to	Min	Max	from	to
Seawater	1333 m	1633 m				

Surface equipment		Software record			
Unit	TWIS	IDEAL Wis	ID10_2C_01		
Depth system	Geolograph	SPM	hspm10_1c_05		
		LWD	See Remarks		
		MWD	9.0_C03		

IDEAL Version: ID10_2B_08 IDF

Format: GEOVIS_RES_1MD Vertical Scale: 1:1200 Graphics File Created: 02-Oct-2005 12:21





Company: Lamont-Doherty Borehole Research

Schlumberger

Well: IODP Expedition 311 CAS-01B

Field: Cascadia Margin

Rig: JOIDES Resolution

State: Pacific Ocean

GeoVISION Resistivity
1:1200 Measured Depth
Recorded Mode Log