

Company: **Lamont-Doherty Borehole Research**

Well: **IODP Expedition 311 CAS-06A**

Field: **Cascadia Margin**

Rig: **IODP Resolution State: Pacific Ocean**

Company: **Lamont-Doherty Borehole Research**

GeoVISION Resistivity  
 1:1200 Measured Depth  
 Recorded Mode Log

Total depth:	1579 m	K.B.	10.06 m
Spud date:	24-Sep-2005	G.L.	-1289 m
Runs:	1 To 1	D.F.	9.60 m

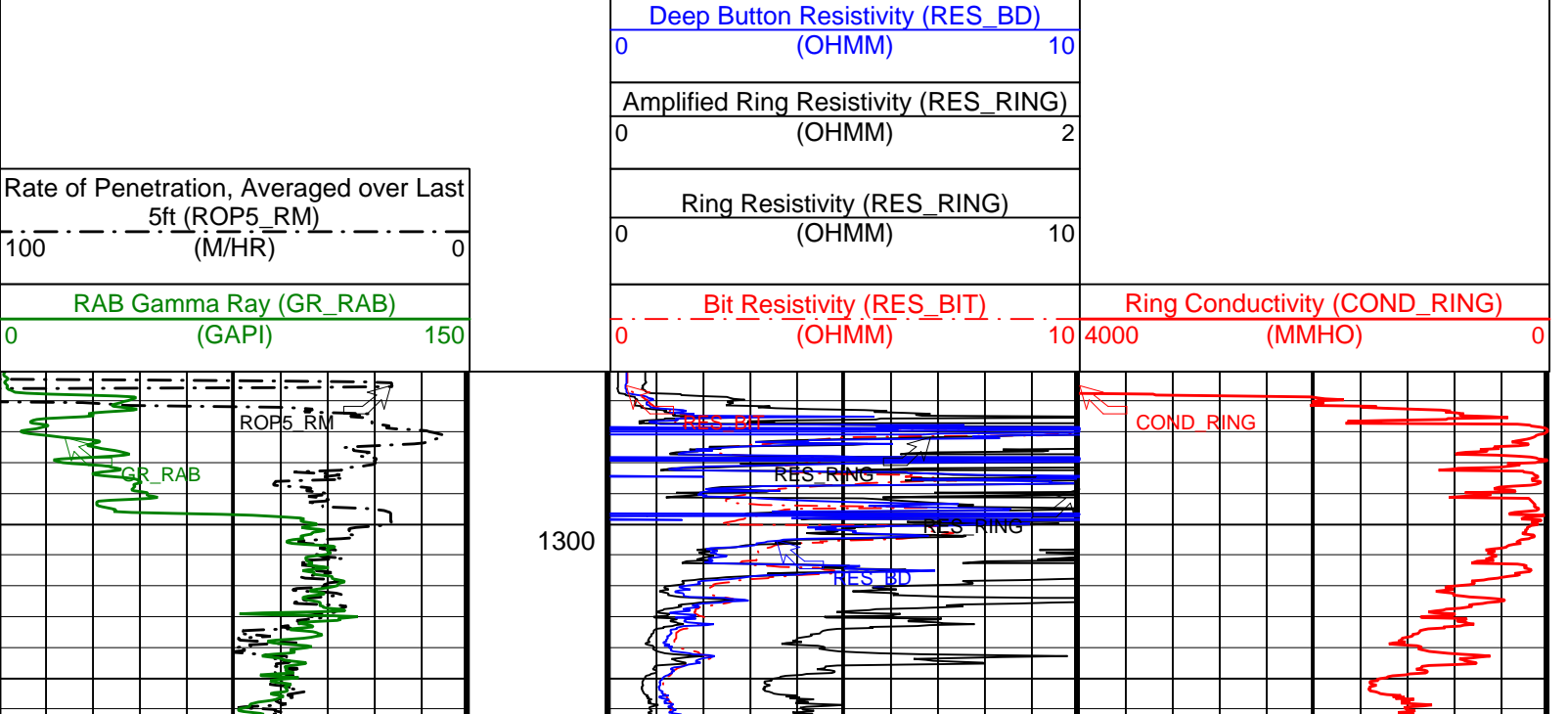
Location	Service Order no.	NAD 27	Longitude	Latitude
Permanent datum: Kelly Bushing	40012416	UTM Zone 10 N	W 126.85088	N 48.66750
Elev.: 0 m	Log measured from:	Mag decl: 18.82 deg.	Other services:	
Driller's Depth	Depth reference:	Mag dip: 69.22 deg.	EcoScope, sonicVISION, provision	

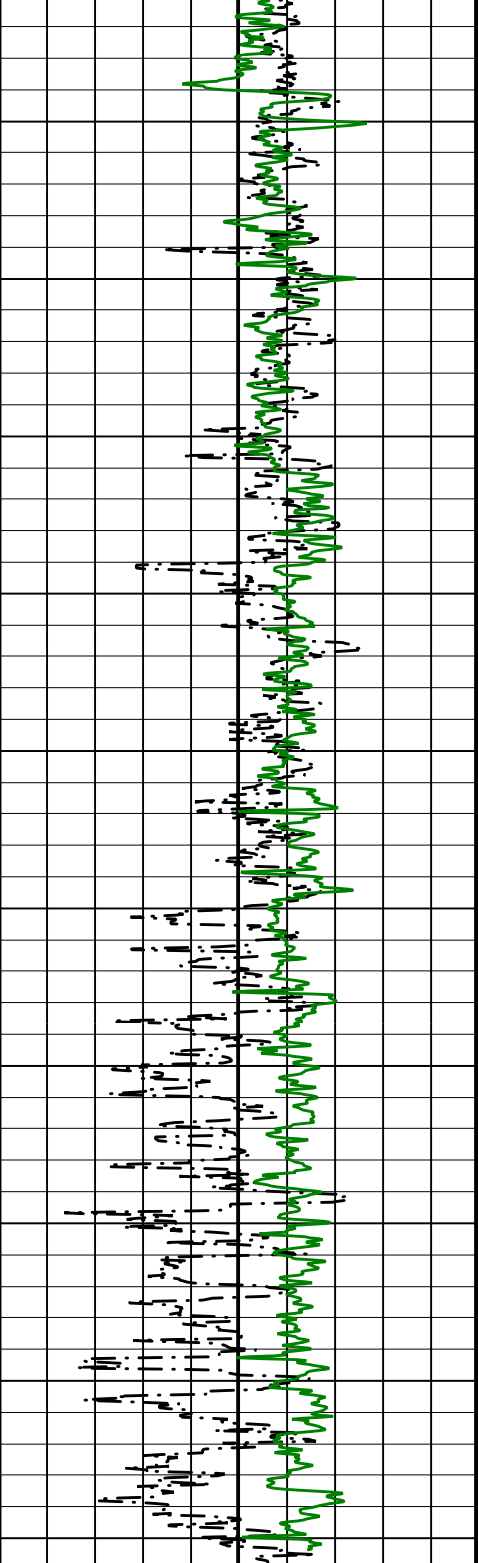
Hole size	Bore hole record		Casing record	
	from	to	Size	Density
9.875 in.	1279 m	1579 m		
Type	Mud record		Borehole deviation record	
Seawater	from 1279 m	to 1579 m	Min	Max
			from	to

Surface equipment		Software record	
Unit	TWIS	IDEAL W/S	ID10_2C_01
Depth system	Geolograph	SPM	hspm10_1c_05
		LWD	See Remarks
		MWD	9.0_C03

**IDEAL Version: ID10\_2B\_08**  
IDF

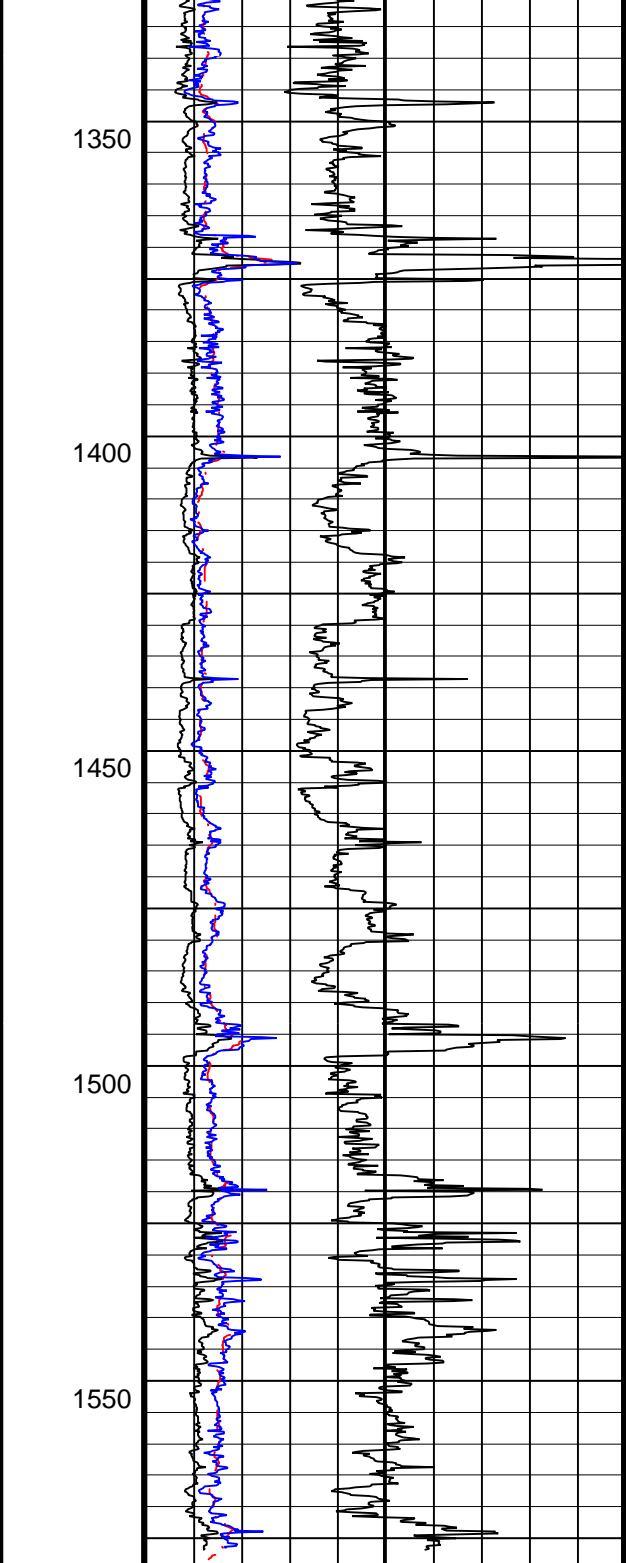
Format: GEOVIS\_RES\_1MD Vertical Scale: 1:1200 Graphics File Created: 03-Oct-2005 15:45





RAB Gamma Ray (GR\_RAB)  
 (GAPI) 0 150

Rate of Penetration, Averaged over Last  
 5ft (ROP5\_RM)  
 (M/HR) 100 0

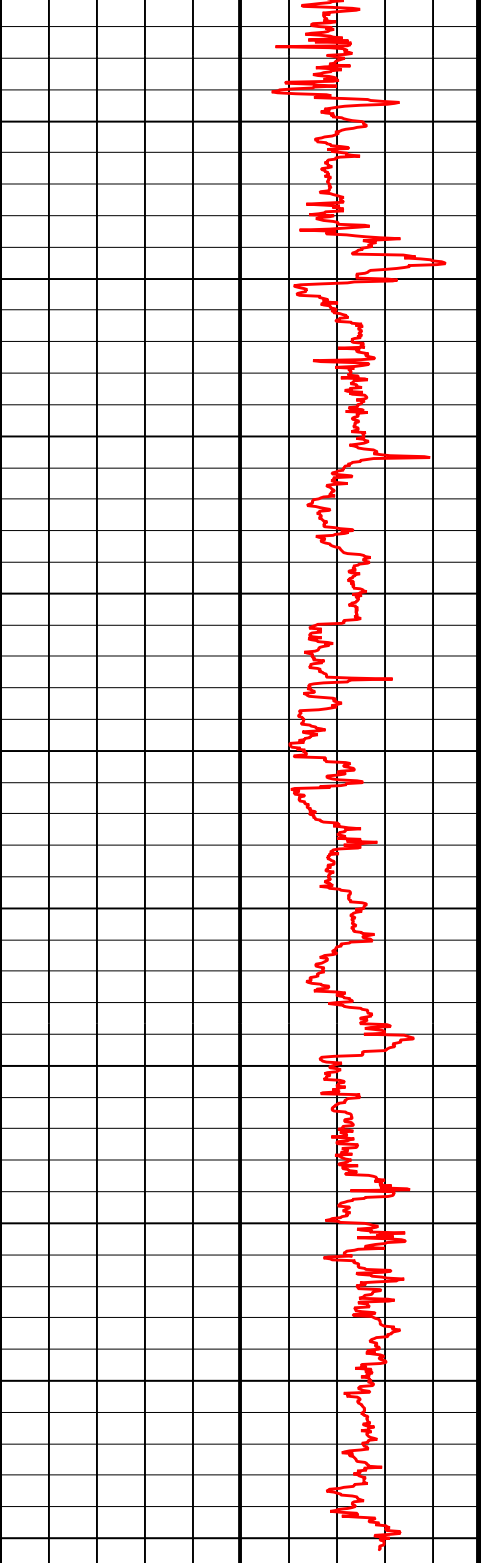


Bit Resistivity (RES\_BIT)  
 (OHMM) 0 10

Ring Resistivity (RES\_RING)  
 (OHMM) 0 10

Amplified Ring Resistivity (RES\_RING)  
 (OHMM) 0 2

Deep Button Resistivity (RES\_BD)  
 (OHMM) 0 10



Ring Conductivity (COND\_RING)  
 (MMHO) 4000 0

Company: Lamont-Doherty Borehole Research

**Schlumberger**

Well: IODP Expedition 311 CAS-06A

Field: Cascadia Margin

Rig: JOIDES Resolution

State: Pacific Ocean

GeoVISION Resistivity  
1:1200 Measured Depth  
Recorded Mode Log