

Schlumberger

Company: Lamont Doherty

Well: IODP EXP 311 Site U1328C

Field: CAS-06A

Country: Canada

Ocean: Pacific

Natural Gamma Ray

Country: Canada
 Field: CAS-06A
 Location: Rig- Joides Resolution
 Well: IODP EXP 311 Site U1328C
 Company: Lamont Doherty

Rig- Joides Resolution		Elev.:	K.B. 11.3 m
			G.L. -1279 m
			D.F. 11 m
Permanent Datum:		GROUND LEVEL	Elev.: 0 m
Log Measured From: DES			11.3 m above Perm. Datum
Drilling Measured From: DES			
API Serial No.	Max. Hole Devi.	Longitude	Latitude
		126 51.043 W	48 40.0546 N

Logging Date	Run Number	Run 1	Run 2	Run
	1			
Depth Driller	1579 m			
Schlumberger Depth	1572 m			
Bottom Log Interval	1570 m			
Top Log Interval	1232 m			
Casing Driller Size @ Depth	0.000 in @ 1339.35 m			
Casing Schlumberger	1337 m			
Bit Size	9.875 in			
Type Fluid In Hole	Sepiolite with Barite			
Density	1.26 g/cm3			
Fluid Loss	0 cm3			
Source Of Sample				
RM @ Measured Temperature	0.177 ohm.m @ 23 degC			
RMF @ Measured Temperature	0.000 ohm.m @			
RMC @ Measured Temperature	0.000 ohm.m @			
Source RMF	RMC			
RM @ MRT	0.199 @ 18 @ 18			
Maximum Recorded Temperatures	18 degC			
Circulation Stopped	10/14/05 1100			
Logger On Bottom	10/14/05 See Log			
Unit Number	99 Houston			
Recorded By	Steve Kittredge			
Witnessed By	Gilles Guerin, Alberto Malinverno			

Logging Date	Run Number	Run 1	Run 2	Run
	1			
Depth Driller	1579 m			
Schlumberger Depth	1572 m			
Bottom Log Interval	1570 m			
Top Log Interval	1232 m			
Casing Driller Size @ Depth	0.000 in @ 1339.35 m			
Casing Schlumberger	1337 m			
Bit Size	9.875 in			
Type Fluid In Hole	Sepiolite with Barite			
Density	1.26 g/cm3			
Fluid Loss	0 cm3			
Source Of Sample				
RM @ Measured Temperature	0.177 ohm.m @ 23 degC			
RMF @ Measured Temperature	0.000 ohm.m @			
RMC @ Measured Temperature	0.000 ohm.m @			
Source RMF	RMC			
RM @ MRT	0.199 @ 18 @ 18			
Maximum Recorded Temperatures	18 degC			
Circulation Stopped	10/14/05 1100			
Logger On Bottom	10/14/05 See Log			
Unit Number	99 Houston			
Recorded By	Steve Kittredge			
Witnessed By	Gilles Guerin, Alberto Malinverno			

Logging Date	Run Number	Run 1	Run 2	Run
	1			
Depth Driller	1579 m			
Schlumberger Depth	1572 m			
Bottom Log Interval	1570 m			
Top Log Interval	1232 m			
Casing Driller Size @ Depth	0.000 in @ 1339.35 m			
Casing Schlumberger	1337 m			
Bit Size	9.875 in			
Type Fluid In Hole	Sepiolite with Barite			
Density	1.26 g/cm3			
Fluid Loss	0 cm3			
Source Of Sample				
RM @ Measured Temperature	0.177 ohm.m @ 23 degC			
RMF @ Measured Temperature	0.000 ohm.m @			
RMC @ Measured Temperature	0.000 ohm.m @			
Source RMF	RMC			
RM @ MRT	0.199 @ 18 @ 18			
Maximum Recorded Temperatures	18 degC			
Circulation Stopped	10/14/05 1100			
Logger On Bottom	10/14/05 See Log			
Unit Number	99 Houston			
Recorded By	Steve Kittredge			
Witnessed By	Gilles Guerin, Alberto Malinverno			

DISCLAIMER

THE USE OF AND RELIANCE UPON THIS RECORDED-DATA BY THE HEREIN NAMED COMPANY (AND ANY OF ITS AFFILIATES, PARTNERS, REPRESENTATIVES, AGENTS, CONSULTANTS AND EMPLOYEES) IS SUBJECT TO THE TERMS AND CONDITIONS AGREED UPON BETWEEN SCHLUMBERGER AND THE COMPANY, INCLUDING: (a) RESTRICTIONS ON USE OF THE RECORDED-DATA; (b) DISCLAIMERS AND WAIVERS OF WARRANTIES AND REPRESENTATIONS REGARDING COMPANY'S USE OF AND RELIANCE UPON THE RECORDED-DATA; AND (c) CUSTOMER'S FULL AND SOLE RESPONSIBILITY FOR ANY INFERENCE DRAWN OR DECISION MADE IN CONNECTION WITH THE USE OF THIS RECORDED-DATA.

OTHER SERVICES1
 OS1: DITE/HLDS
 OS2: APS/HNGS
 OS3: WSTA
 OS4:
 OS5:

OTHER SERVICES2
 OS1:
 OS2:
 OS3:
 OS4:
 OS5:

REMARKS: RUN NUMBER 1
 Hole drilled with APC/XCB.
 All depths in Meters Below Rig Floor (MBRF).
 Hole flushed with Sepiolite/Barite mud.
 Sea Floor Driller-1279 MBRF.
 Sea Floor Logger- 1279
 Total Depth Driller- 1579 MBRF.
 Total Depth Logger- 1572 MBRF.
 Casing Bottom Driller- 1339.35 MBRF
 Casing Bottom Logger- 1337 MBRF
 No Repeat due to time limitations.

 Heave was 2-3 meters.

REMARKS: RUN NUMBER 2

RUN 1		
SERVICE ORDER #:		
PROGRAM VERSION:	12C0-301	
FLUID LEVEL:		
LOGGED INTERVAL	START	STOP


RUN 2		
SERVICE ORDER #:		
PROGRAM VERSION:		
FLUID LEVEL:		
LOGGED INTERVAL	START	STOP

EQUIPMENT DESCRIPTION

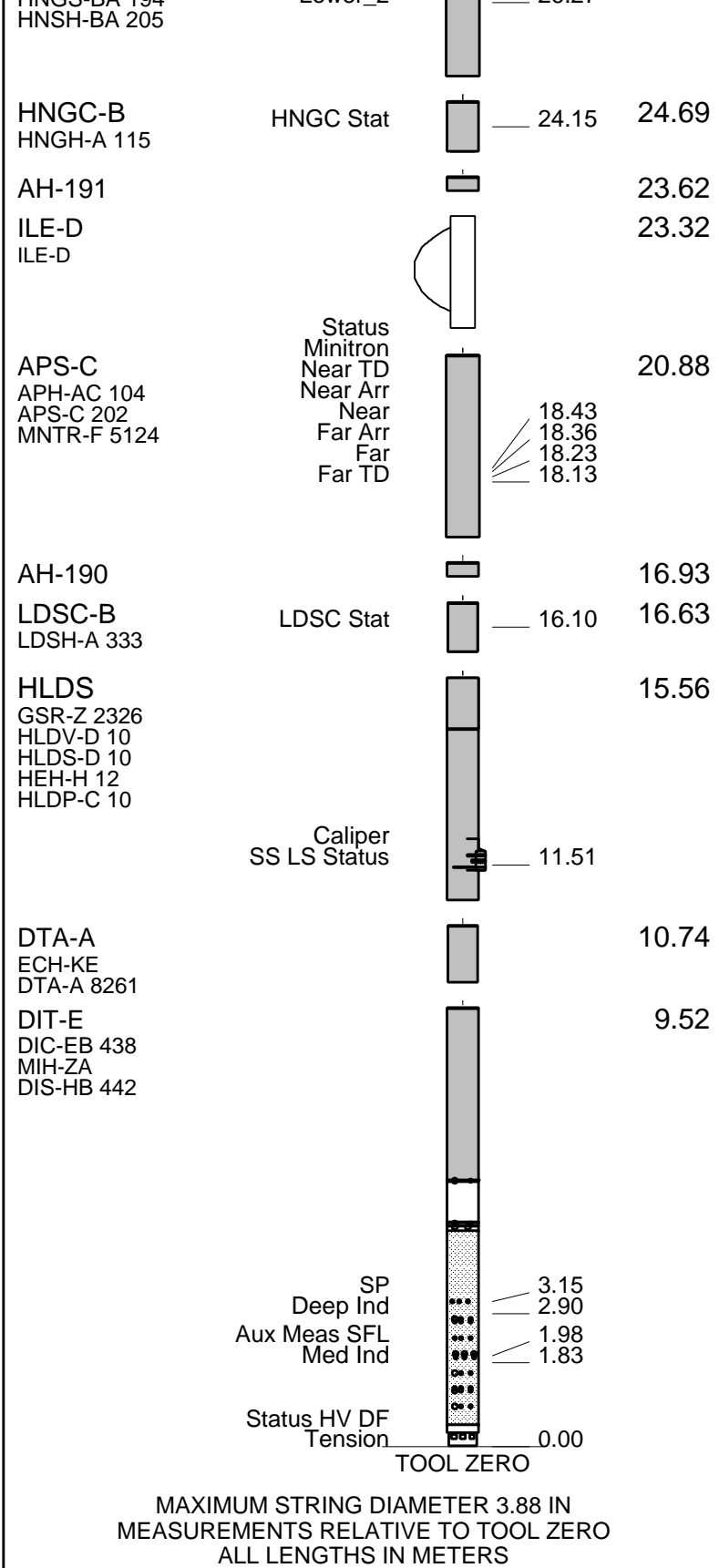
RUN 1 SURFACE EQUIPMENT
 SFT-281 6250
 SFT-178 6250
 GSR-U 135
 WITM (DTS)-A

RUN 2 SURFACE EQUIPMENT

RUN 1 DOWNHOLE EQUIPMENT

LEH-QT		28.99
LEH-QT 1726		
DTC-H	CTEM	27.82
ECH-KC 9841	TelStatus	28.10
	ToolStatu	27.19
HNGS-BA	Upper_1	26.49
HNGS-BA 194	Lower_2	26.27
		27.19

RUN 2 DOWNHOLE EQUIPMENT



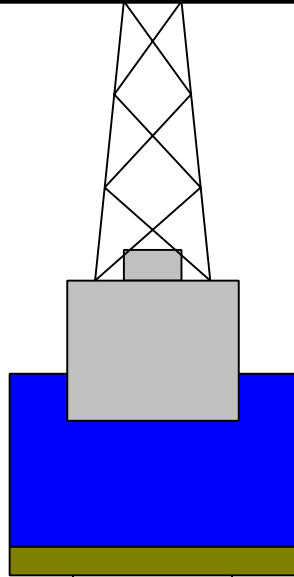
Production String	(in)	(m)	Well Schematic	(m)	(in)	Casing String
	OD	ID		MD	MD	

Kelly Bushing Elevation
Derrick Floor Elevation

Mean Sea Level

11.3
11.0

0.0



0.0 5.500

Casing String

1279.0 9.875
1339.3 5.500

Borehole Segment
Casing Shoe

1579.0 9.875

Borehole Segment Bottom



Schlumberger

Main Up Log

MAXIS Field Log

Input DLIS Files

DEFAULT	PI_LDL_APS_NGS_008LUP	FN:7	PRODUCER	14-Oct-2005 17:36	1572.8 M	1232.5 M
---------	-----------------------	------	----------	-------------------	----------	----------

OP System Version: 12C0-301
MCM

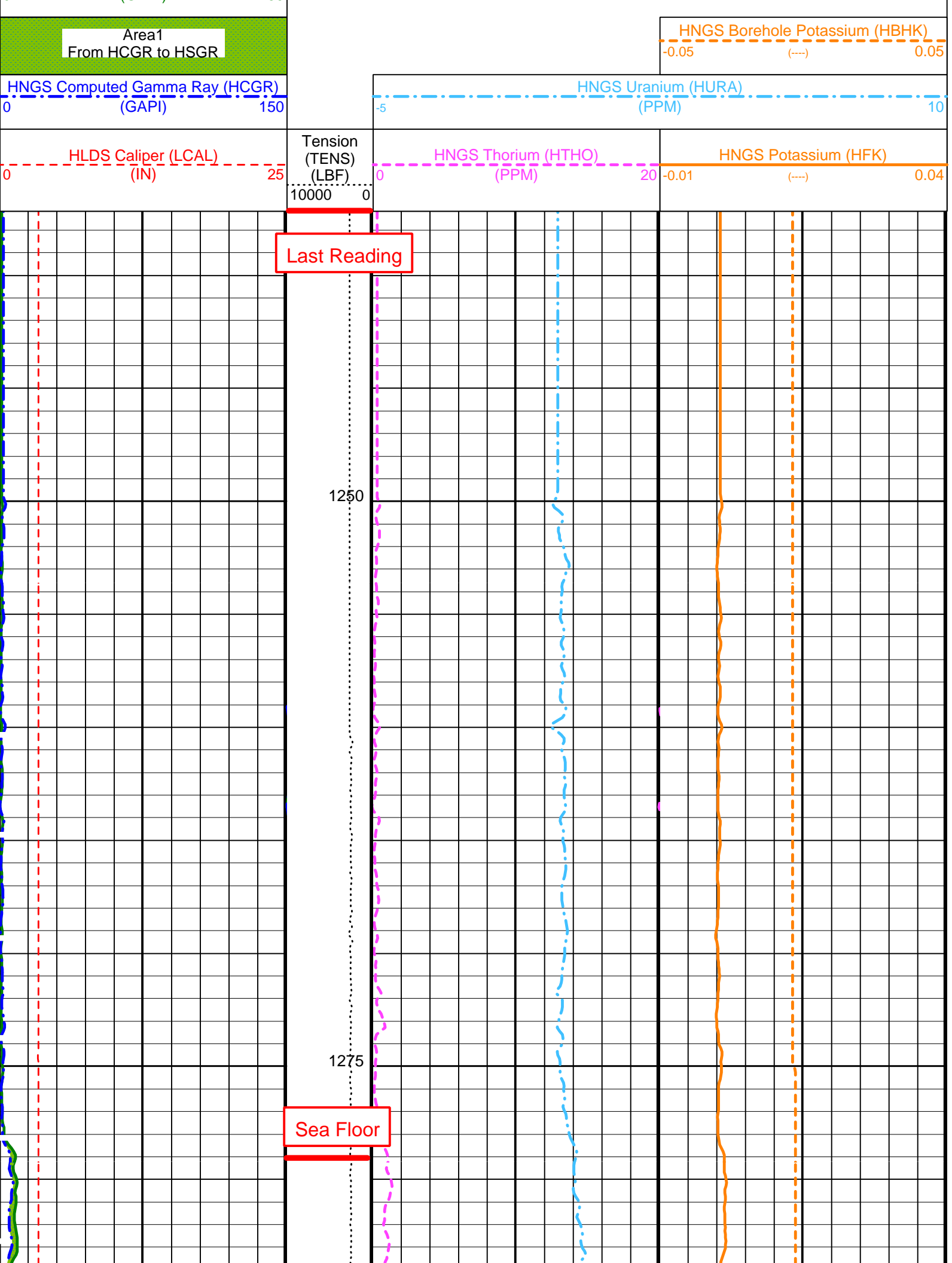
DIT-E	12C0-301	DTA-A	12C0-301
HLDS	SPC-2602-NUCL	LDSC-B	SPC-2602-NUCL
APS-C	SPC-2602-NUCL	HNGC-B	SPC-2602-NUCL
HNGS-BA	SPC-2602-NUCL	DTC-H	12C0-301

PIP SUMMARY

Time Mark Every 60 S

HNGS Spectroscopy Gamma Ray
(HSGR)

0 (GAPI) 150



Area1
From HCGR to HSGR

HNGS Borehole Potassium (HBHK)
-0.05 (---) 0.05

HNGS Computed Gamma Ray (HCGR)
(GAPI)
0 150

HNGS Uranium (HURA)
(PPM)
-5 10

HLDS Caliper (LCAL)
(IN)
0 25

Tension
(TENS)
(LBF)
10000 0

HNGS Thorium (HTHO)
(PPM)
0 20

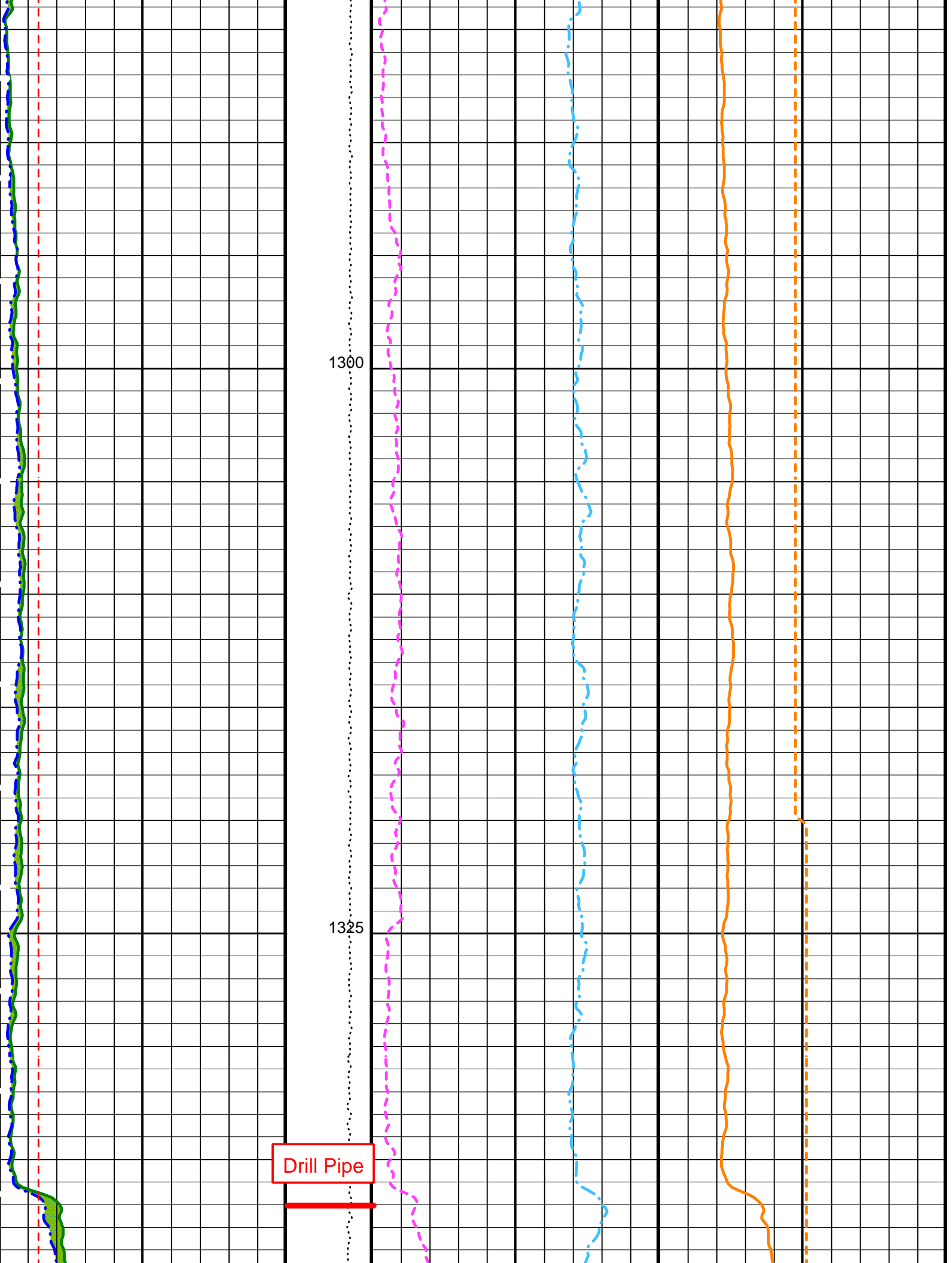
HNGS Potassium (HFK)
(PPM)
-0.01 (---) 0.04

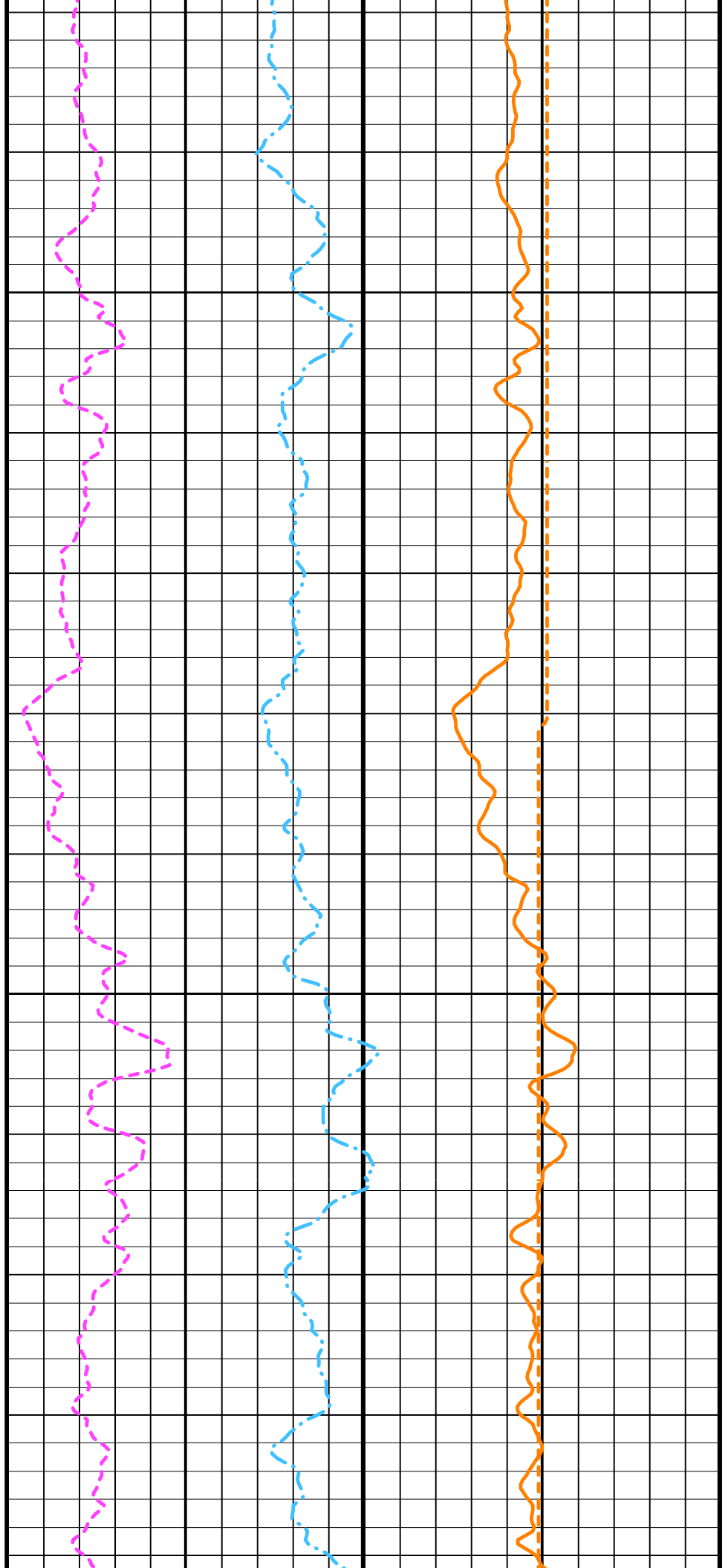
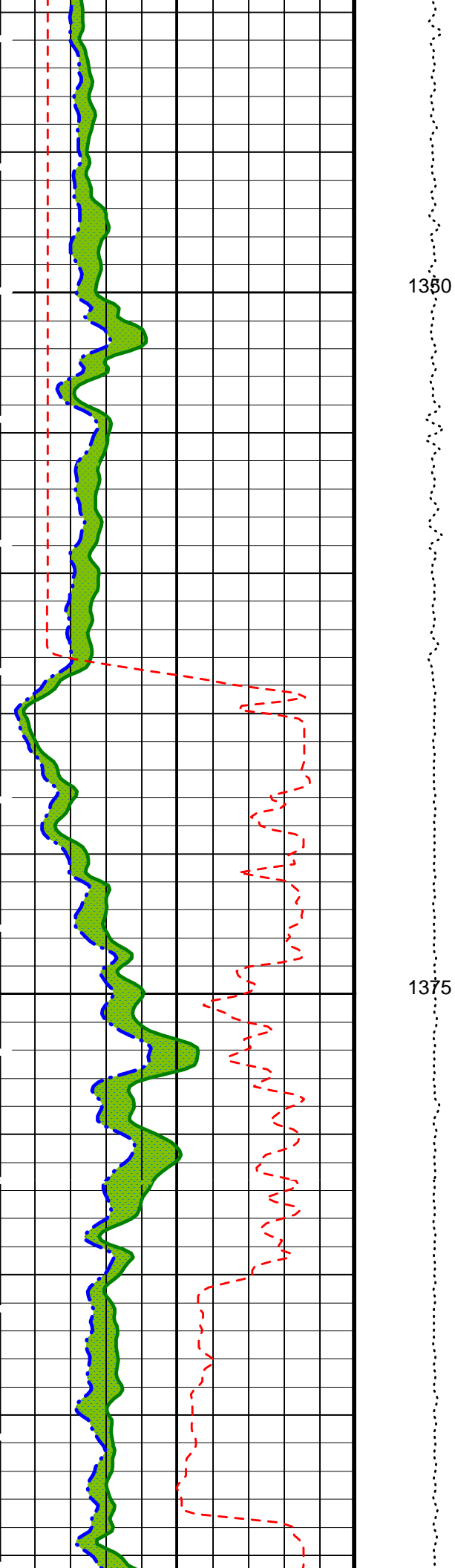
Last Reading

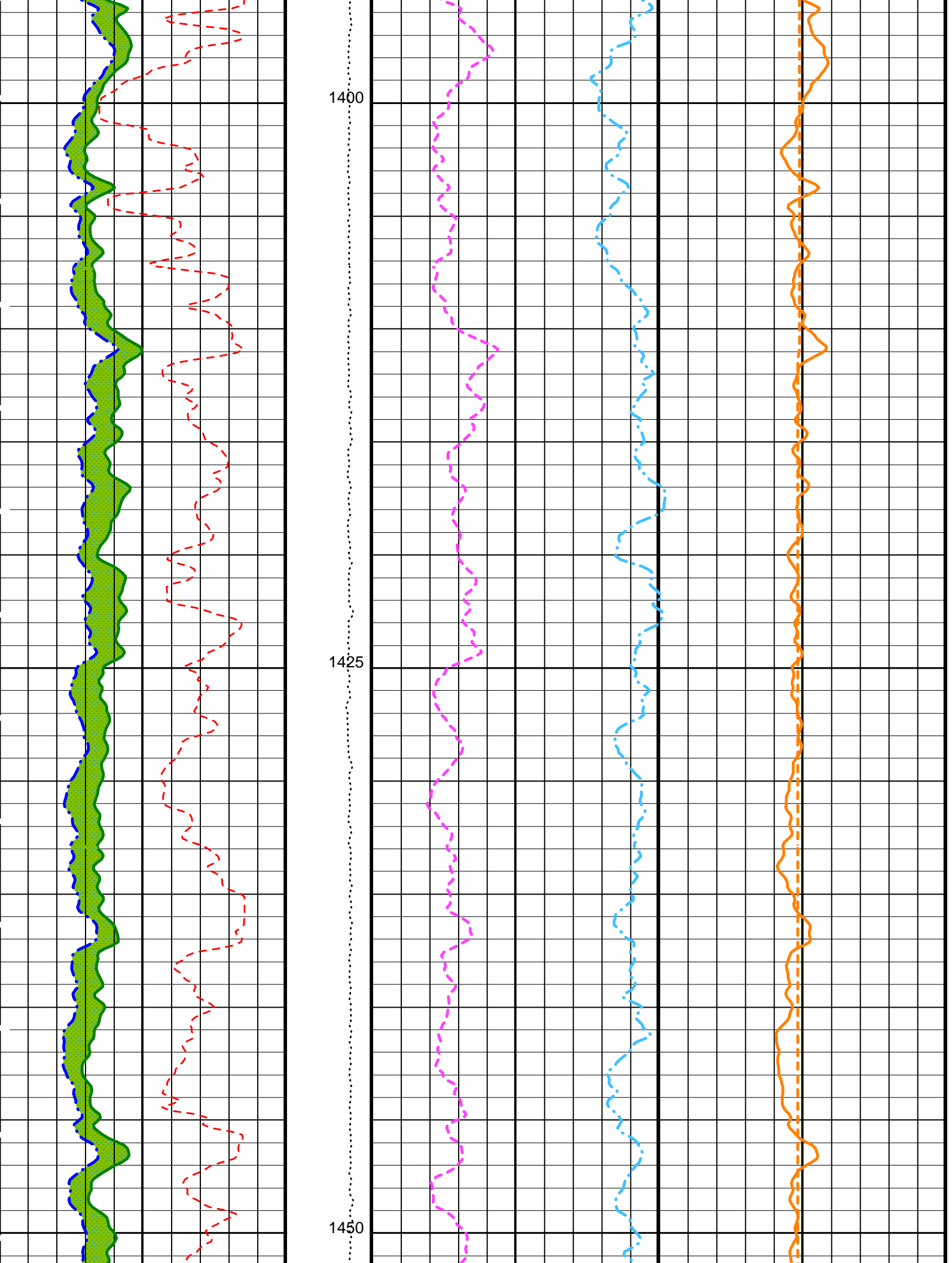
1250

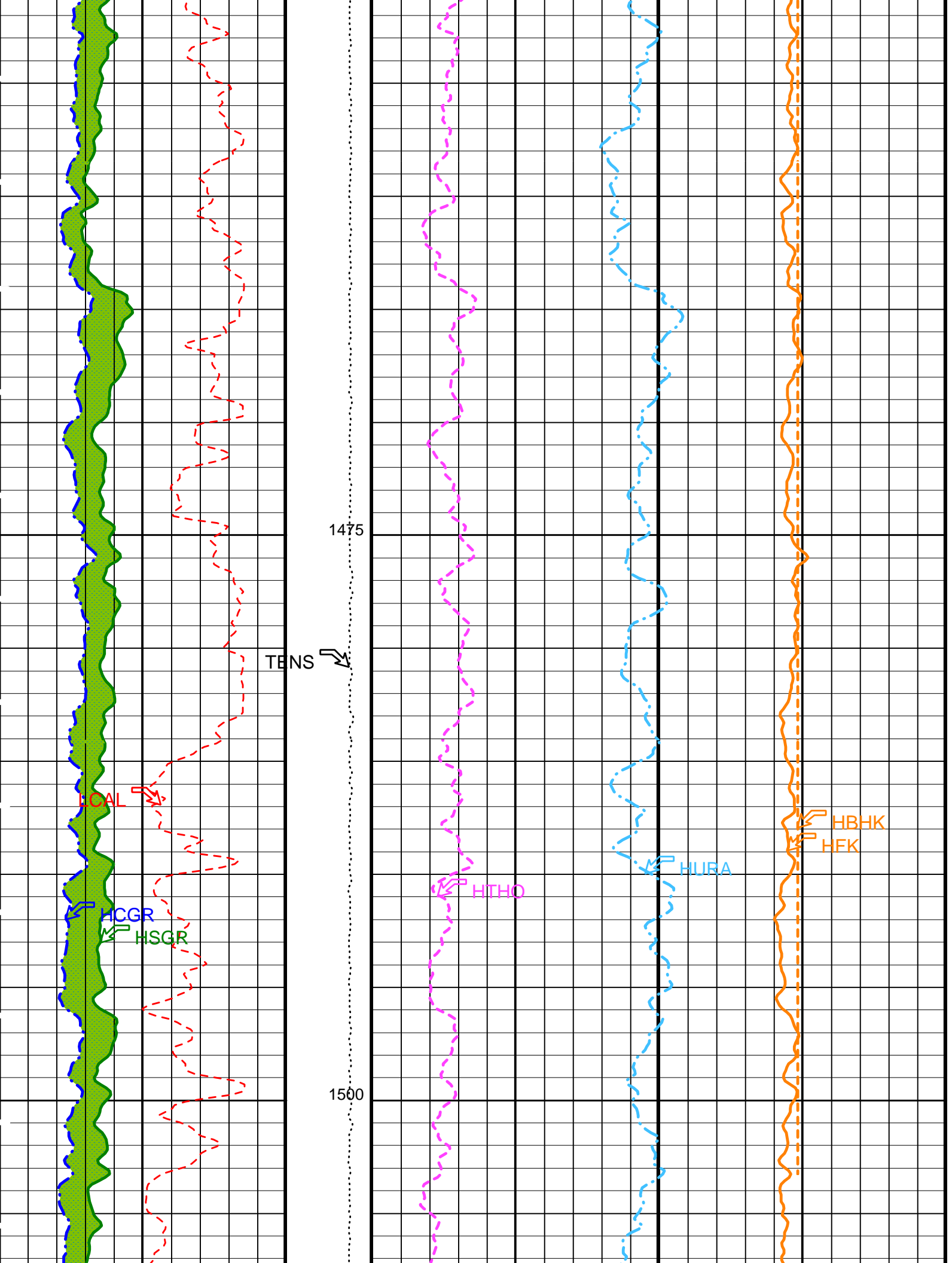
1275

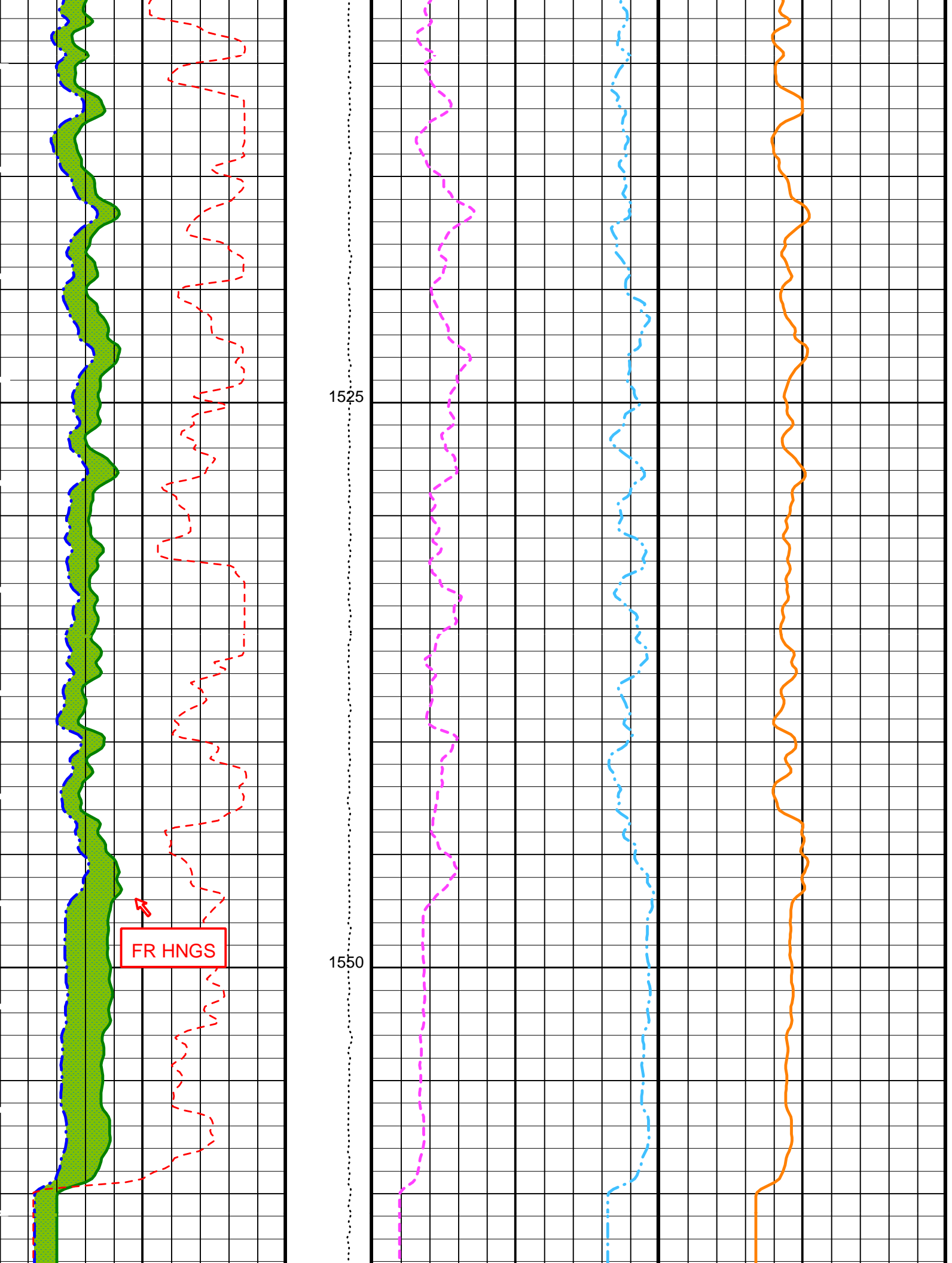
Sea Floor

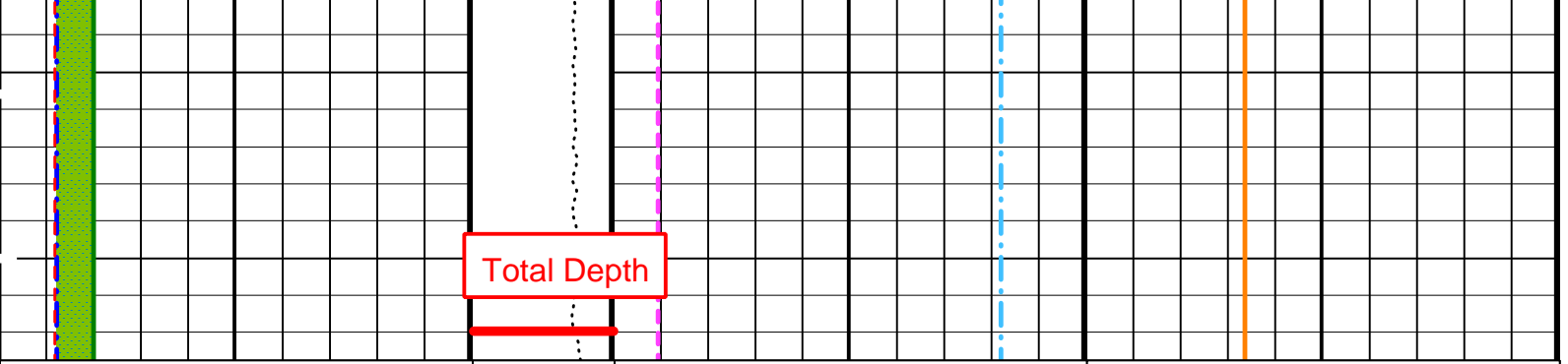












0	HLDS Caliper (LCAL) (IN)	25	Tension (TENS) (LBF)	0	HNGS Thorium (HTHO) (PPM)	20	-0.01	HNGS Potassium (HFK) (---)	0.04
0	HNGS Computed Gamma Ray (HCGR) (GAPI)	150	10000	0	HNGS Uranium (HURA) (PPM)				10
Area1 From HCGR to HSGR								HNGS Borehole Potassium (HBHK) (---)	0.05
0	HNGS Spectroscopy Gamma Ray (HSGR) (GAPI)	150							

PIP SUMMARY

Time Mark Every 60 S

Parameters

DLIS Name	Description	Value	
DIT-E: Dual Induction - E			
BHS	Borehole Status	OPEN	
GCSE	Generalized Caliper Selection	BS	
APS-C: Accelerator-Porosity Tool			
BHS	Borehole Status	OPEN	
GCSE	Generalized Caliper Selection	BS	
HNGS-BA: Hostile Natural Gamma Ray Sonde			
BAR1	HNGS Detector 1 Barite Constant	1	
BAR2	HNGS Detector 2 Barite Constant	1	
BHK	HNGS Borehole Potassium Correction Concentration	0	
BHS	Borehole Status	OPEN	
CSD1	Inner Casing Outer Diameter	0	IN
CSD2	Outer Casing Outer Diameter	0	IN
CSW1	Inner Casing Weight	0	LB/F
CSW2	Outer Casing Weight	0	LB/F
DBCC	HNGS Barite Constant Correction Flag	NONE	
GCSE	Generalized Caliper Selection	BS	
H1P	HNGS Detector 1 Allow/Disallow In Processing	ALLOW	
H2P	HNGS Detector 2 Allow/Disallow In Processing	ALLOW	
HABK	HNGS Borehole Potassium Running Average	-0.00111137	
HALF	HNGS Alpha Filter Length	60	IN
HCRB	HNGS Apply Borehole Potassium Correction	NONE	
HMWM	Mud Weighting Material	BARI	
HNPE	HNGS Processing Enable	YES	
S1BI	HNGS Detector 1 Calibration Bismuth Count Rate	1.3	CPS
S2BI	HNGS Detector 2 Calibration Bismuth Count Rate	1.3	CPS
SGRC	HNGS Standard Gamma-Ray Correction Flag	YES	
TPOS	Tool Position	ECCE	
VBA1	HNGS Detector 1 Variable Barite Factor Running Average	-48.6418	
VBA2	HNGS Detector 2 Variable Barite Factor Running Average	11.1826	
HOLEV: Integrated Hole/Cement Volume			
BHS	Borehole Status	OPEN	
GCSE	Generalized Caliper Selection	BS	
System and Miscellaneous			
BS	Bit Size	9.875	IN
DFD	Drilling Fluid Density	1.26	G/C3
DO	Depth Offset for Playback	0.0	M
PP	Playback Processing	NORMAL	

Format: HNGSYields

Vertical Scale: 1:200

Graphics File Created: 17-Oct-2005 22:23

DIT-E	12C0-301	DTA-A	12C0-301
HLDS	SPC-2602-NUCL	LDSC-B	SPC-2602-NUCL
APS-C	SPC-2602-NUCL	HNGC-B	SPC-2602-NUCL
HNGS-BA	SPC-2602-NUCL	DTC-H	12C0-301

Input DLIS Files

DEFAULT	PI_LDL_APS_NGS_008LUP	FN:7	PRODUCER	14-Oct-2005 17:36	1572.8 M	1232.5 M
---------	-----------------------	------	----------	-------------------	----------	----------

Company: Lamont Doherty

Schlumberger

Well: IODP EXP 311 Site U1328C

Field: CAS-06A

Country: Canada

Ocean: Pacific

Natural Gamma Ray