

Company: Lamont Doherty

Well: IODP EXP 311 Site U1329D

Field: CAS-05D

Country: Canada

Ocean: Pacific

Country: Canada
Field: CAS-05D
Location: Rig- Joides Resolution
Well: IODP EXP 311 Site U1329D
Company: Lamont Doherty

HLLDS/APS Porosity		
Rig- Joides Resolution	Elev.:	K.B. 11.3 m
		G.L. -970 m
		D.F. 0 m
Permanent Datum:	GROUND LEVEL	Elev.: 0 m
Log Measured From: DES		11.3 m above Perm. Datum
Drilling Measured From: DES		
API Serial No.	Max. Hole Devi.	Longitude Latitude
		W 48 47.367 N 126 40.713

Logging Date		
Run Number	1	
Depth Driller	1167.9 m	
Schlumberger Depth	1166 m	
Bottom Log Interval	1163 m	
Top Log Interval	955.7 m	
Casing Driller Size @ Depth	0.000 in @ 1004.32 m	@
Casing Schlumberger	1003 m	
Bit Size	9.875 in	
Type Fluid In Hole	Septolite with Barite	

MUD		Density		Viscosity	
Fluid Loss		1.26 g/cm3			
PH		0 cm3			
Source Of Sample					
RM @ Measured Temperature	0.177 ohm.m	@	23 degC	@	
RMF @ Measured Temperature	0.000 ohm.m	@		@	
RMC @ Measured Temperature	0.000 ohm.m	@		@	
Source RMF	RMC				
RM @ MRT	RMF @ MRT	0.199 @ 18	@ 18	@	@
Maximum Recorded Temperatures	18 degC				
Circulation Stopped	9/30/05	Time	1800		
Logger On Bottom	9/30/05	Time	See Log		
Unit Number	99	Location	Houston		
Recorded By	Steve Kittredge				
Witnessed By	Gilles Guerin, Alberto Malinverno				

Logging Date	Run 1	Run 2	Run
Run Number			
Depth Driller			
Schlumberger Depth			
Bottom Log Interval			
Top Log Interval			
Casing Driller Size @ Depth	@		
Casing Schlumberger			
Bit Size			
Type Fluid In Hole			
MUD		Density	
Fluid Loss		Viscosity	
PH			
Source Of Sample			
RM @ Measured Temperature	@		
RMF @ Measured Temperature	@		
RMC @ Measured Temperature	@		
Source RMF	RMC		
RM @ MRT	RMF @ MRT	@	@
Maximum Recorded Temperatures			
Circulation Stopped			
Logger On Bottom			
Unit Number			
Recorded By			
Witnessed By			

DISCLAIMER

THE USE OF AND RELIANCE UPON THIS RECORDED-DATA BY THE HEREIN NAMED COMPANY (AND ANY OF ITS AFFILIATES, PARTNERS, REPRESENTATIVES, AGENTS, CONSULTANTS AND EMPLOYEES) IS SUBJECT TO THE TERMS AND CONDITIONS AGREED UPON BETWEEN SCHLUMBERGER AND THE COMPANY, INCLUDING: (a) RESTRICTIONS ON USE OF THE RECORDED-DATA; (b) DISCLAIMERS AND WAIVERS OF WARRANTIES AND REPRESENTATIONS REGARDING COMPANY'S USE OF AND RELIANCE UPON THE RECORDED-DATA; AND (c) CUSTOMER'S FULL AND SOLE RESPONSIBILITY FOR ANY INFERENCE DRAWN OR DECISION MADE IN CONNECTION WITH THE USE OF THIS RECORDED-DATA.




OTHER SERVICES1 OS1: MESTB/DSI/HNGS OS2: OS3: OS4: OS5:	OTHER SERVICES2 OS1: OS2: OS3: OS4: OS5:
--	---

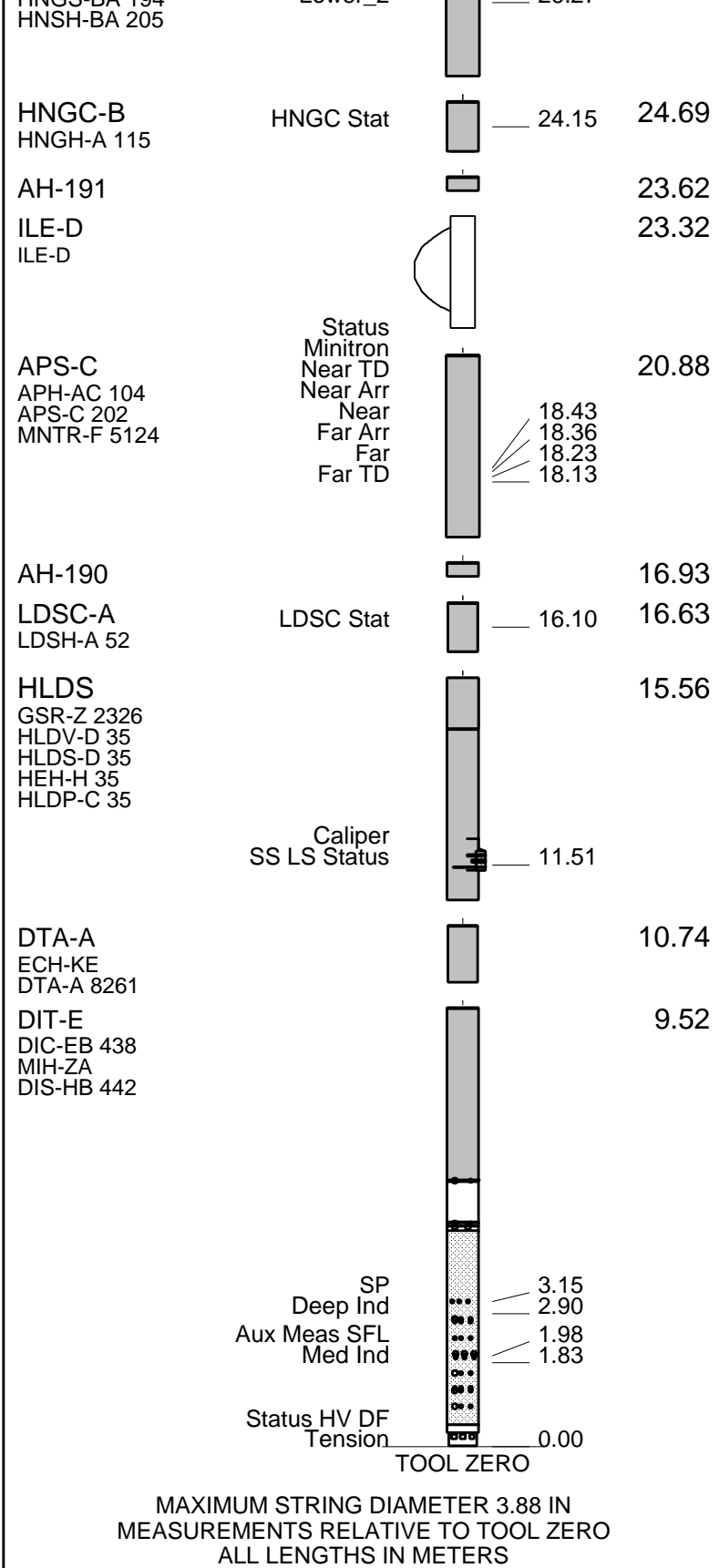
REMARKS: RUN NUMBER 1 Hole drilled for logging, with two XCB cores on bottom. All depths in Meters Below Rig Floor (MBRF). Hole flushed with Sepiolite/Barite mud. Sae Floor Driller- 957.4 MBRF Sea Floor Logger- 956 MBRF. Total Depth Driller- 1167.9 MBRF Total Depth Logger- 1166 MBRF. Casing bottom Driller- 1004.32 MBRF. Casing Bottom Logger- 1003 MBRF Tight hole at 1144 and 1128 MBRF. Caliper closed before entering pipe. Heave was around 3+ meters. Lamont Heave Comp. hit limit around 1115 MBRF.	REMARKS: RUN NUMBER 2
--	-----------------------

RUN 1			RUN 2		
SERVICE ORDER #:			SERVICE ORDER #:		
PROGRAM VERSION:		12C0-301	PROGRAM VERSION:		
FLUID LEVEL:			FLUID LEVEL:		
LOGGED INTERVAL	START	STOP	LOGGED INTERVAL	START	STOP

EQUIPMENT DESCRIPTION

RUN 1		RUN 2	
SURFACE EQUIPMENT			
SFT-281 6250 SFT-178 6250 GSR-U 135 WITM (DTS)-A			

DOWNHOLE EQUIPMENT			
LEH-QT			28.99
LEH-QT 1726			
DTC-H	CTEM		27.82
ECH-KC 9841	TelStatus ToolStatu		28.10
			27.19
HNGS-BA	Upper_1		26.49
HNGS-BA 194	Lower_2		27.19
			26.27



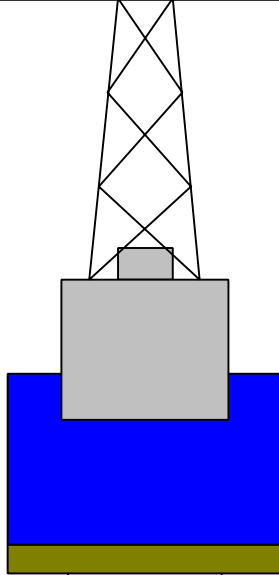
Production String	(in)	(ft)	Well Schematic	(ft)	(in)	Casing String
	OD	ID		MD	MD	

Kelly Bushing Elevation
Derrick Floor Elevation

11.3
11.0

Mean Sea Level

0.0



0.0 5.500

Casing String

957.4 9.875
1004.3 5.500

Borehole Segment
Casing Shoe

1167.9 9.875

Borehole Segment Bottom

Schlumberger

Main Up Log

MAXIS Field Log

Input DLIS Files

DEFAULT	PI_LDL_APS_NGS_044LUP	FN:45	PRODUCER	30-Sep-2005 15:41	1165.9 M	951.0 M
---------	-----------------------	-------	----------	-------------------	----------	---------

Output DLIS Files

DEFAULT	PI_LDL_APS_NGS_045PUP	FN:47	PRODUCER	30-Sep-2005 16:34	1165.9 M	955.7 M
DLIS_BKUP	PI_LDL_APS_NGS_045PUP	FN:48	PRODUCER	30-Sep-2005 16:34	1165.9 M	955.7 M

OP System Version: 12C0-301
MCM

DIT-E	12C0-301	DTA-A	12C0-301
HLDS	SPC-2602-NUCL_b	LDSC-A	SPC-2602-NUCL_b
APS-C	SPC-2602-NUCL_b	HNGC-B	SPC-2602-NUCL_b
HNGS-BA	SPC-2602-NUCL_b	DTC-H	12C0-301

Changed Parameter Summary

DLIS Name

New Value

Previous Value

Depth & Time

GCSE

BS

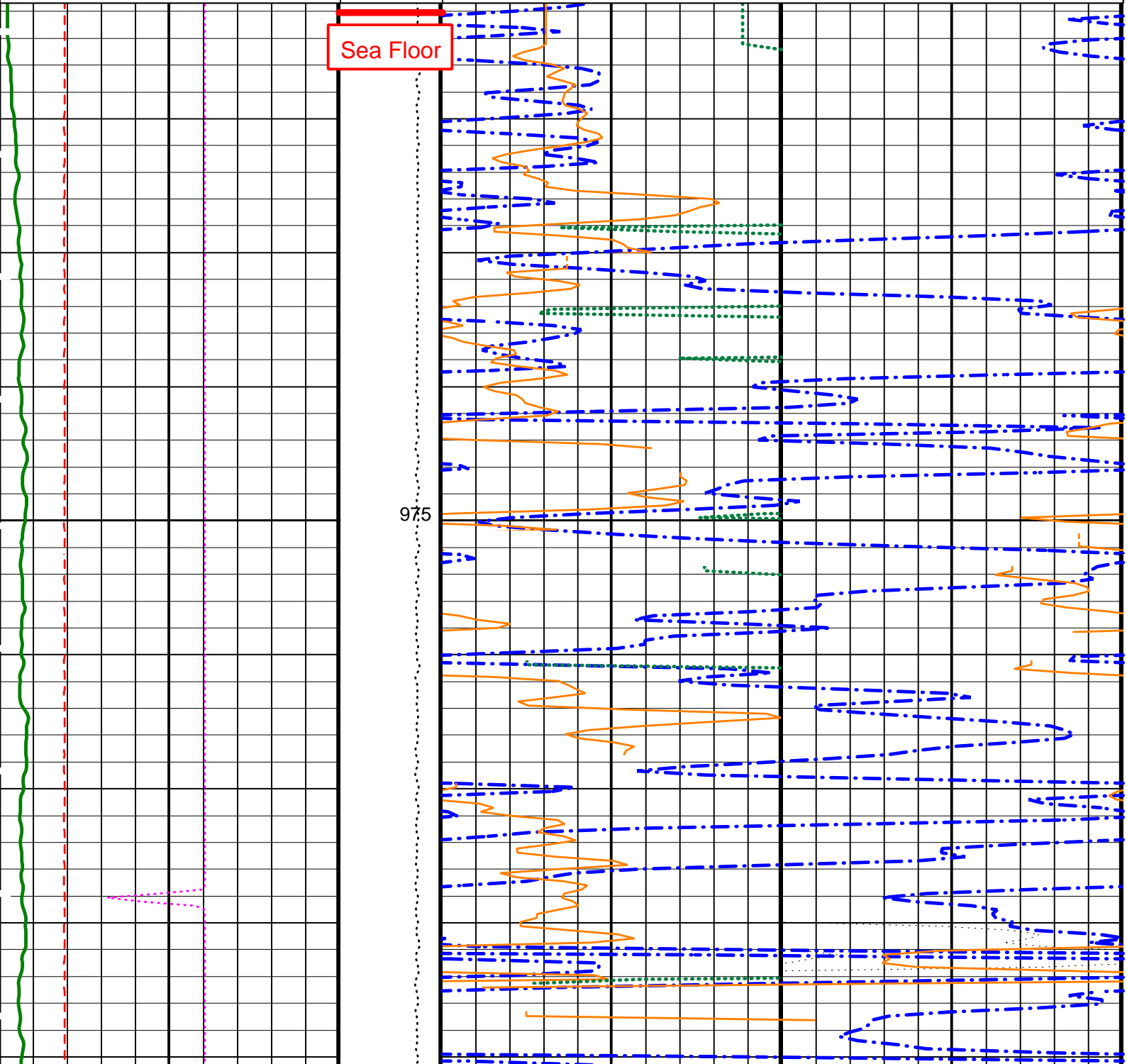
LCAL

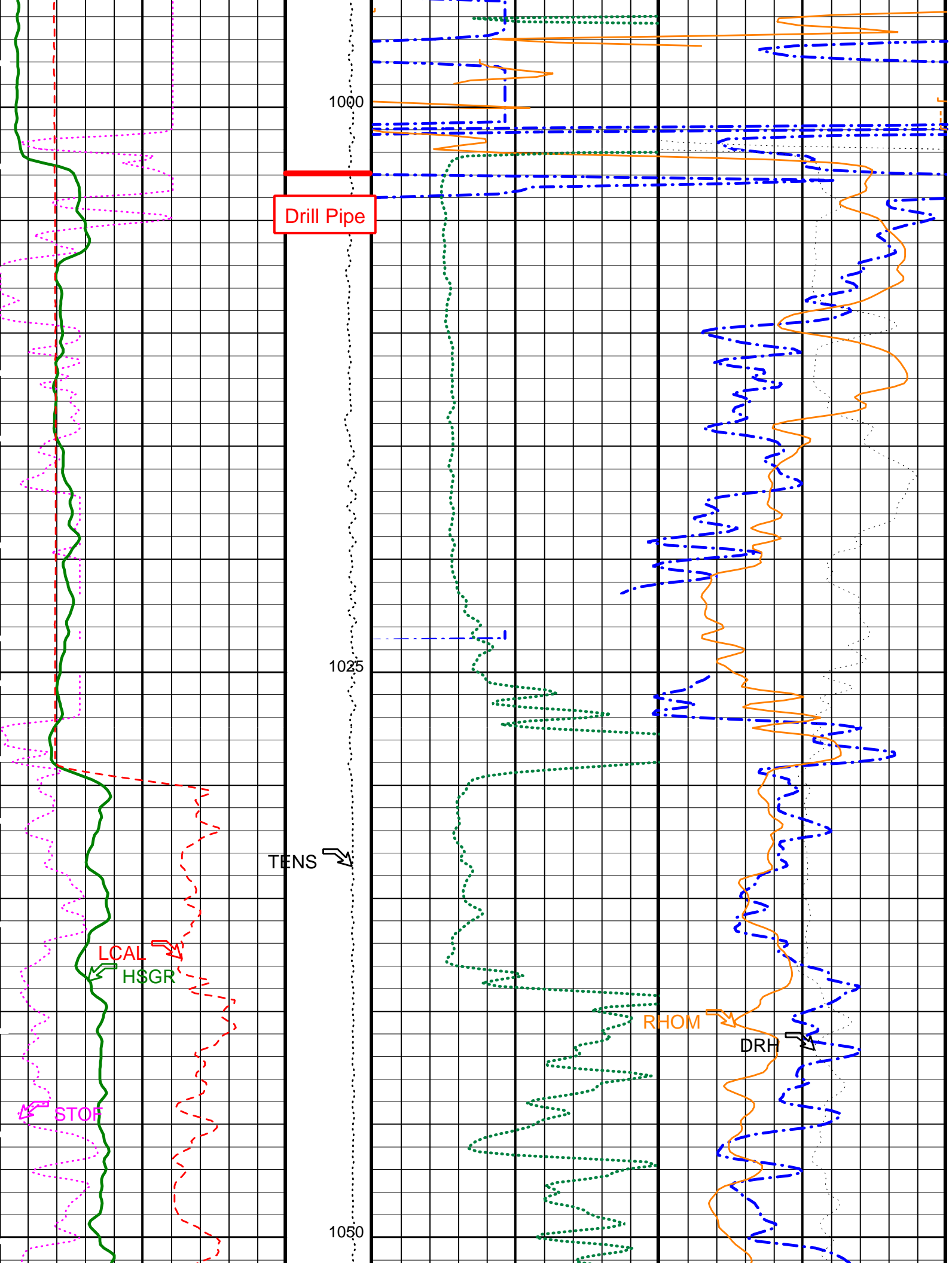
1006.8 16:37:35

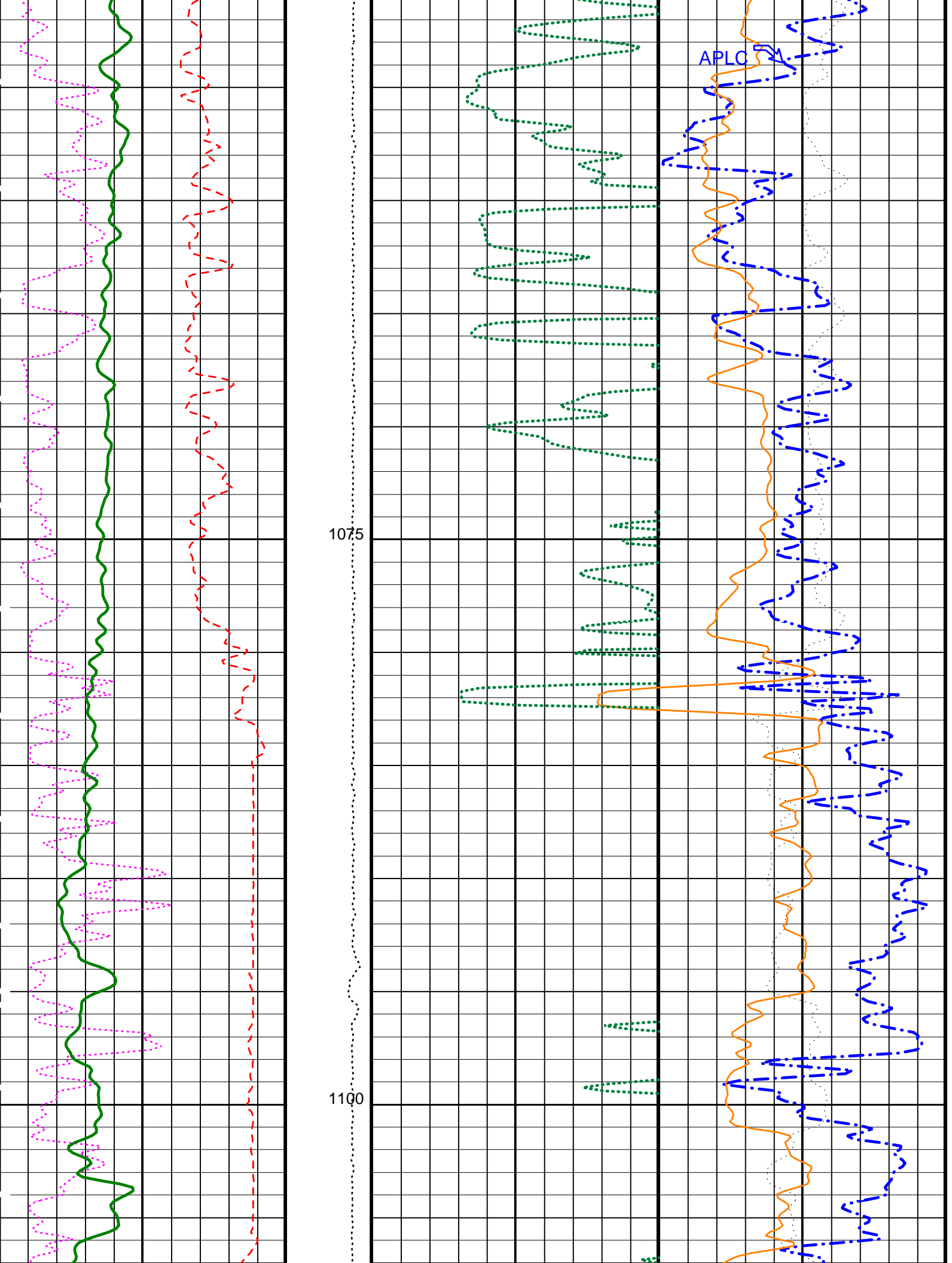
PIP SUMMARY

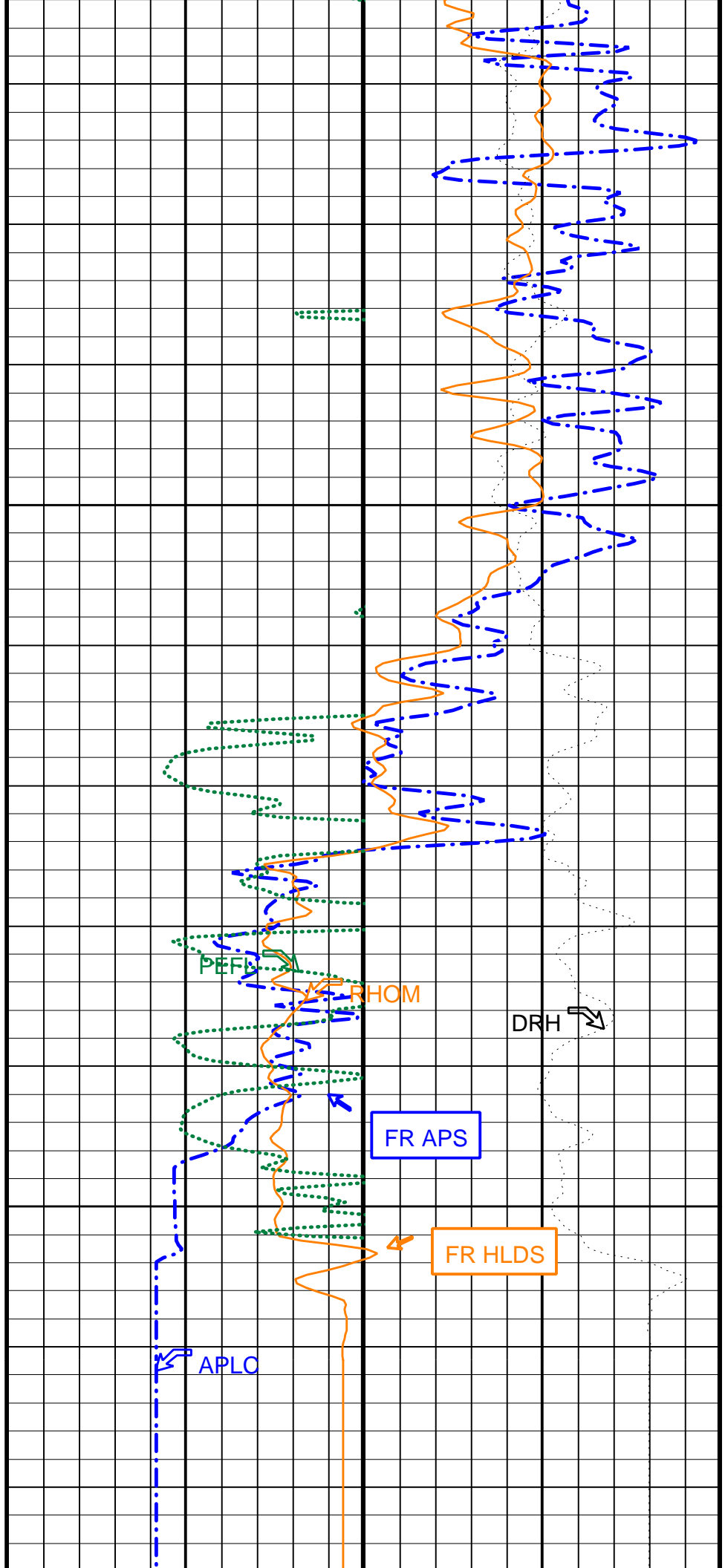
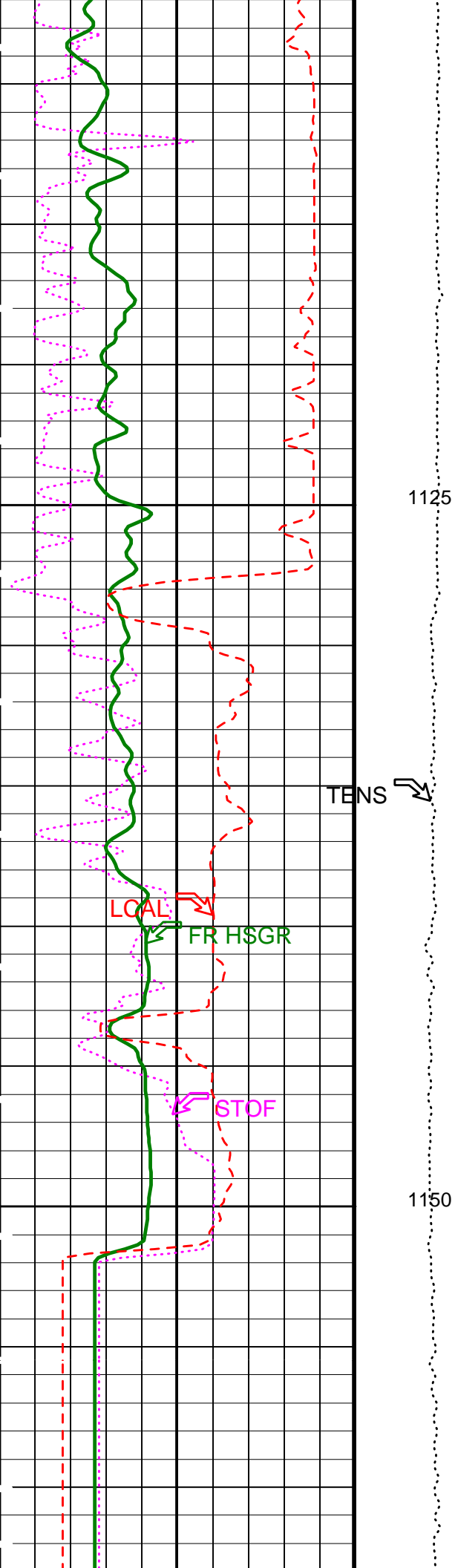
Time Mark Every 60 S

<p>HNGS Spectroscopy Gamma Ray (HSGR) (GAPI) 0 150</p>	<p>HLDS Long Spaced Photoelectric Effect (PEFL) 0 10</p>	<p>HLDS Bulk Density Correction (DRH) (G/C3) -0.25 0.25</p>
<p>APS Effective Standoff in Limestone (STOF) (IN) -1 4</p>	<p>HLDS Bulk Density (RHOM) (G/C3) 3 1</p>	
<p>HLDS Caliper (LCAL) (IN) 0 20</p>	<p>Tension (TENS) (LBF) 10000 0</p>	<p>APS Near/Array Corrected Limestone Porosity (APLC) (PU) 0 100</p>

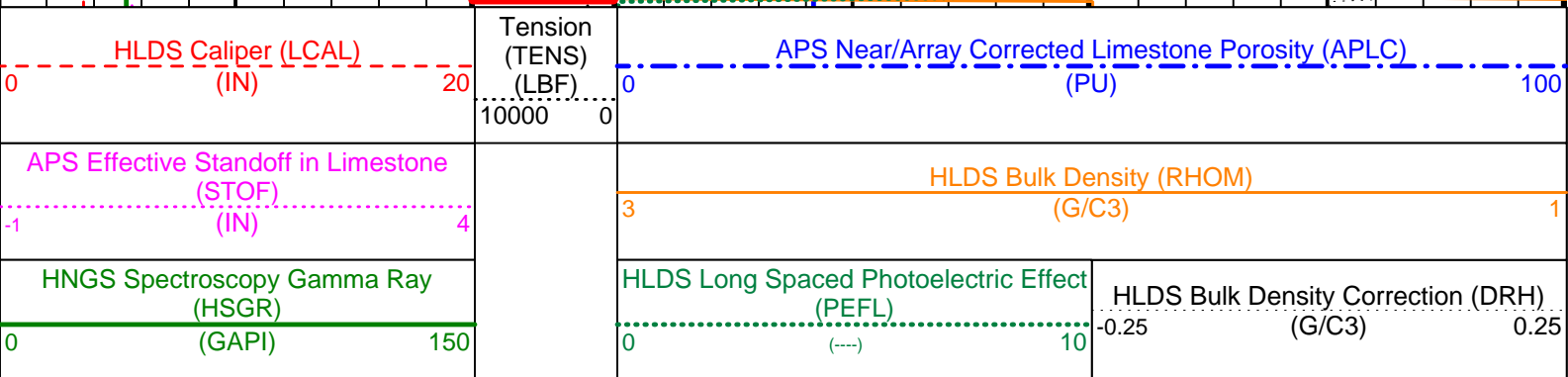








Total Depth



PIP SUMMARY

Time Mark Every 60 S

Parameters

DLIS Name	Description	Value	
DIT-E: Dual Induction - E			
BHS	Borehole Status	OPEN	
BHT	Bottom Hole Temperature (used in calculations)	100	DEGC
GCSE	Generalized Caliper Selection	LCAL	
GDEV	Average Angular Deviation of Borehole from Normal	0	DEG
GGRD	Geothermal Gradient	0.018227	DC/M
GTSE	Generalized Temperature Selection	LINEAR_ESTIMATE	
SHT	Surface Hole Temperature	20	DEGC
HLDS: Hostile Litho-Density Sonde			
DHC	Density Hole Correction	BS	
DPPM	Density Porosity Processing Mode	HIRS	
FD	Fluid Density	1.108	G/C3
LATC	HLDS Activation Correction	ON	
MDEN	Matrix Density	2.71	G/C3
APS-C: Accelerator-Porosity Tool			
APS Software Version		5	
AASD	APS Thermal and Array Detectors High Voltage Setting	1970.11	V
ADSO	APS Array Detectors Data Source Switch	Both	
AFSD	APS Far Detector High Voltage Setting	2083.44	V
AHCS	APS Holesize Correction Source	GCSE	
AHSS	APS Holesize Correction Switch	ON	
AMTY	APS Environmental Corrections Mud Type	WaterBaseBarite	
ANSD	APS Near Detector High Voltage Setting	1738.26	V
ASOS	APS Standoff Correction Switch	ON	
ATSS	APS Temperature-Pressure-Salinity Correction Switch	OFF	
BHS	Borehole Status	OPEN	
BHT	Bottom Hole Temperature (used in calculations)	100	DEGC
DPPM	Density Porosity Processing Mode	HIRS	
FSAL	Formation Salinity	22000	PPM
GCSE	Generalized Caliper Selection	LCAL	
GDEV	Average Angular Deviation of Borehole from Normal	0	DEG
GGRD	Geothermal Gradient	0.018227	DC/M
GTSE	Generalized Temperature Selection	LINEAR_ESTIMATE	
NARC	APS Near/Array Calibration Ratio	0.987752	
NFRC	APS Near/Far Calibration Ratio	0.962987	
SHT	Surface Hole Temperature	20	DEGC
HNGS-BA: Hostile Natural Gamma Ray Sonde			
BAR1	HNGS Detector 1 Barite Constant	1	
BAR2	HNGS Detector 2 Barite Constant	1	
BHK	HNGS Borehole Potassium Correction Concentration	0	
BHS	Borehole Status	OPEN	
BHT	Bottom Hole Temperature (used in calculations)	100	DEGC
CSD1	Inner Casing Outer Diameter	0	IN
CSD2	Outer Casing Outer Diameter	0	IN
CSW1	Inner Casing Weight	0	LB/F
CSW2	Outer Casing Weight	0	LB/F
DBCC	HNGS Barite Constant Correction Flag	NONE	
GCSE	Generalized Caliper Selection	LCAL	
GDEV	Average Angular Deviation of Borehole from Normal	0	DEG
GGRD	Geothermal Gradient	0.018227	DC/M
GTSE	Generalized Temperature Selection	LINEAR_ESTIMATE	
H1P	HNGS Detector 1 Allow/Disallow In Processing	ALLOW	
H2P	HNGS Detector 2 Allow/Disallow In Processing	ALLOW	
HABK	HNGS Borehole Potassium Running Average	-0.00188243	
HALF	HNGS Alpha Filter Length	60	IN
HCRB	HNGS Apply Borehole Potassium Correction	NONE	
HMB	HNGS Mud Weight Material	BAR	

HMWMM	Mud Weighting Material	BARI	
HNPE	HNGS Processing Enable	YES	
S1BI	HNGS Detector 1 Calibration Bismuth Count Rate	1.3	CPS
S2BI	HNGS Detector 2 Calibration Bismuth Count Rate	1.3	CPS
SGRC	HNGS Standard Gamma-Ray Correction Flag	YES	
SHT	Surface Hole Temperature	20	DEGC
TPOS	Tool Position	ECCE	
VBA1	HNGS Detector 1 Variable Barite Factor Running Average	0.971055	
VBA2	HNGS Detector 2 Variable Barite Factor Running Average	0.974887	
HOLEV: Integrated Hole/Cement Volume			
BHS	Borehole Status	OPEN	
BHT	Bottom Hole Temperature (used in calculations)	100	DEGC
GCSE	Generalized Caliper Selection	LCAL	
GDEV	Average Angular Deviation of Borehole from Normal	0	DEG
GGRD	Geothermal Gradient	0.018227	DC/M
GTSE	Generalized Temperature Selection	LINEAR_ESTIMATE	
SHT	Surface Hole Temperature	20	DEGC
System and Miscellaneous			
BS	Bit Size	9.875	IN
BSAL	Borehole Salinity	22000.00	PPM
CSIZ	Current Casing Size	0.000	IN
CWEI	Casing Weight	0.00	LB/F
DFD	Drilling Fluid Density	1.26	G/C3
DO	Depth Offset for Playback	0.0	M
PP	Playback Processing	RECOMPUTE	
TD	Total Depth	1167.9	M

Format: APSLiquidPorosity_1 Vertical Scale: 1:200 Graphics File Created: 30-Sep-2005 16:34

OP System Version: 12C0-301

MCM

DIT-E	12C0-301	DTA-A	12C0-301
HLDS	SPC-2602-NUCL_b	LDSC-A	SPC-2602-NUCL_b
APS-C	SPC-2602-NUCL_b	HNGC-B	SPC-2602-NUCL_b
HNGS-BA	SPC-2602-NUCL_b	DTC-H	12C0-301

Input DLIS Files

DEFAULT	PI_LDL_APS_NGS_044LUP	FN:45	PRODUCER	30-Sep-2005 15:41	1165.9 M	951.0 M
---------	-----------------------	-------	----------	-------------------	----------	---------

Output DLIS Files

DEFAULT	PI_LDL_APS_NGS_045PUP	FN:47	PRODUCER	30-Sep-2005 16:34
DLIS_BKUP	PI_LDL_APS_NGS_045PUP	FN:48	PRODUCER	30-Sep-2005 16:34

Company: Lamont Doherty

Schlumberger

Well: IODP EXP 311 Site U1329D

Field: CAS-05D

Country: Canada

Ocean: Pacific

HLDS/APS Porosity