

Company: Lamont Doherty

Well: IODP EXP 311 Site U1329D

Field: CAS-05D

Country: Canada Ocean: Pacific

Formation Micro_Scanner

Country: Canada		Elev.: K.B. 11.3 m	
Field: CAS-05D		G.L. -970 m	
Location: Rig- Joides Resolution		D.F. 0 m	
Well: IODP EXP 311 Site U1329D		Elev.: 0 m _____	
Company: Lamont Doherty		11.3 m above Perm. Datum	
LOCATION			
Rig- Joides Resolution			
Permanent Datum: _____		GROUND LEVEL _____	
Log Measured From: DES _____		DES _____	
Drilling Measured From: DES _____		DES _____	
API Serial No.	Max. Hole Devi.	Longitude W 48 47.367	Latitude N 126 40.713

Logging Date			
Run Number	1		
Depth Driller	1167.9 m		
Schlumberger Depth	1166 m		
Bottom Log Interval	1165 m		
Top Log Interval	1035.41 m		
Casing Driller Size @ Depth	0.000 in @ 1004.32 m		
Casing Schlumberger	1003 m @		
Bit Size	9.875 in		
Type Fluid In Hole			
Septolite with Barite			
Density	1.26 g/cm3		
Fluid Loss	0 cm3		
MUD			
Source Of Sample			
RM @ Measured Temperature	0.177 ohm.m @	23 degC	@
RMF @ Measured Temperature	0.000 ohm.m @	@	@
RMC @ Measured Temperature	0.000 ohm.m @	@	@
Source RMF	RMC		
RM @ MRT	0.199 @ 18	@ 18	@
Maximum Recorded Temperatures	18 degC		
Circulation Stopped	9/30/05	1800	
Logger On Bottom	9/30/05	See Log	
Unit Number	99	Houston	
Recorded By	Steve Kittredge		
Witnessed By	Gilles Guerin, Alberto Malinverno		

Logging Date			
Run Number			
Depth Driller			
Schlumberger Depth			
Bottom Log Interval			
Top Log Interval			
Casing Driller Size @ Depth		@	
Casing Schlumberger			
Bit Size			
Type Fluid In Hole			
Density			
Fluid Loss			
MUD			
Source Of Sample			
RM @ Measured Temperature		@	
RMF @ Measured Temperature		@	
RMC @ Measured Temperature		@	
Source RMF	RMC		
RM @ MRT		@	@
Maximum Recorded Temperatures			
Circulation Stopped			
Logger On Bottom			
Unit Number			
Recorded By			
Witnessed By			

DISCLAIMER

THE USE OF AND RELIANCE UPON THIS RECORDED-DATA BY THE HEREIN NAMED COMPANY (AND ANY OF ITS AFFILIATES, PARTNERS, REPRESENTATIVES, AGENTS, CONSULTANTS AND EMPLOYEES) IS SUBJECT TO THE TERMS AND CONDITIONS AGREED UPON BETWEEN SCHLUMBERGER AND THE COMPANY, INCLUDING: (a) RESTRICTIONS ON USE OF THE RECORDED-DATA; (b) DISCLAIMERS AND WAIVERS OF WARRANTIES AND REPRESENTATIONS REGARDING COMPANY'S USE OF AND RELIANCE UPON THE RECORDED-DATA; AND (c) CUSTOMER'S FULL AND SOLE RESPONSIBILITY FOR ANY INFERENCE DRAWN OR DECISION MADE IN CONNECTION WITH THE USE OF THIS RECORDED-DATA.

OTHER SERVICES1

OS1: DITE/HLDS/APS/HNGS
OS2:
OS3:
OS4:
OS5:

OTHER SERVICES2

OS1:
OS2:
OS3:
OS4:
OS5:

REMARKS: RUN NUMBER 1

Hole drilled for logging, with two XCB cores on bottom.
All depths in Meters Below Rig Floor (MBRF).
Hole flushed with Sepiolite/Barite mud.
Sea Floor Driller- 957.4 MBRF
Sea Floor Logger- 956 MBRF.
Total Depth Driller- 1167.9 MBRF
Total Depth Logger- 1166 MBRF.
Casing bottom Driller- 1004.32 MBRF.
Casing Bottom Logger- 1003 MBRF
Tight hole at 1144 and 1128 MBRF.
Caliper closed before entering pipe.
Heave was around 3+ meters.
Could not log into pipe.
Torpedo would not enter pipe.

REMARKS: RUN NUMBER 2

RUN 1
SERVICE ORDER #:
PROGRAM VERSION: 12C0-301
FLUID LEVEL:

RUN 2
SERVICE ORDER #:
PROGRAM VERSION:
FLUID LEVEL:

LOGGED INTERVAL	START	STOP



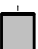
LOGGED INTERVAL	START	STOP

EQUIPMENT DESCRIPTION

RUN 1
SURFACE EQUIPMENT
GSR-U/Y 166
WITM (DTS)-A

RUN 2

DOWNHOLE EQUIPMENT

LEH-QT			32.33
LEH-QT			
DTC-H	CTEM		31.16
ECH-KC	TelStatus		31.44
	ToolStatu		30.53
SGT-N	Gamma Ray		30.25
SGH-K 2450			30.53

SGP-R 2430
 SGC-TB 9585
 SGD-TAA

AH-MCD 28.85
 AH-MCD

DSST-B 26.73
 SPAC-B 8128
 ECH-SD 8128
 SMDR-BD 8076
 SSIJ-BA 8127
 SMDX-AA 8148

PWF 11.18

AH-MCD 11.18
 AH-MCD

DTA-A 8.90
 ECH-KE
 DTA-A 8231

MEST-B 7.68
 MEAH-B 701
 MEAC-A 804
 MEPH-A 702
 GPIC-A 840
 MEPC-AB 807
 MEDS-B 771

MEDR MEAC
 MEPC MEDS-B
 HV DF
 Tension GPIT
 0.46
 0.00

TOOL ZERO

MAXIMUM STRING DIAMETER 4.50 IN
 MEASUREMENTS RELATIVE TO TOOL ZERO
 ALL LENGTHS IN METERS

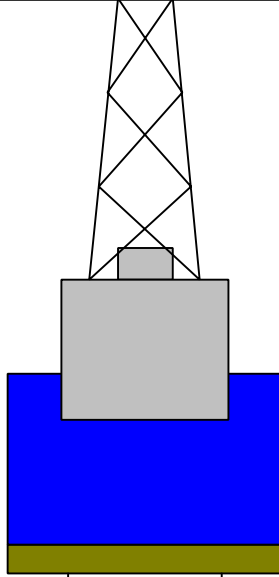
Production String	(in)	(ft)	Well Schematic	(ft)	(in)	Casing String
	OD	ID		MD	MD	

Kelly Bushing Elevation
Derrick Floor Elevation

11.3
11.0

Mean Sea Level

0.0



0.0 5.500

Casing String



957.4 9.875
1004.3 5.500

Borehole Segment
Casing Shoe

1167.9 9.875

Borehole Segment Bottom

Schlumberger

Second Pass

MAXIS Field Log

Output DLIS Files

DEFAULT	FMS_DSI_051LUP	FN:58	PRODUCER	30-Sep-2005 21:07	1125.0 M	1035.9 M
FMS_BKUP	FMS_DSI_051LUP	FN:59	PRODUCER	30-Sep-2005 21:07	1125.0 M	1035.9 M

OP System Version: 12C0-301
MCM

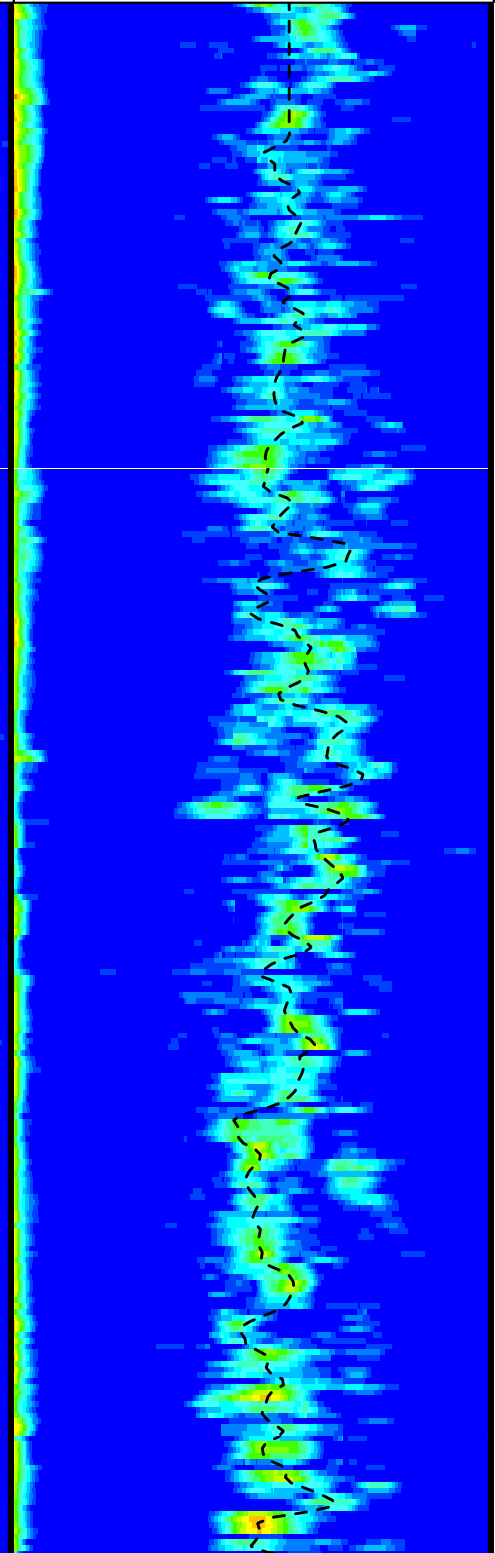
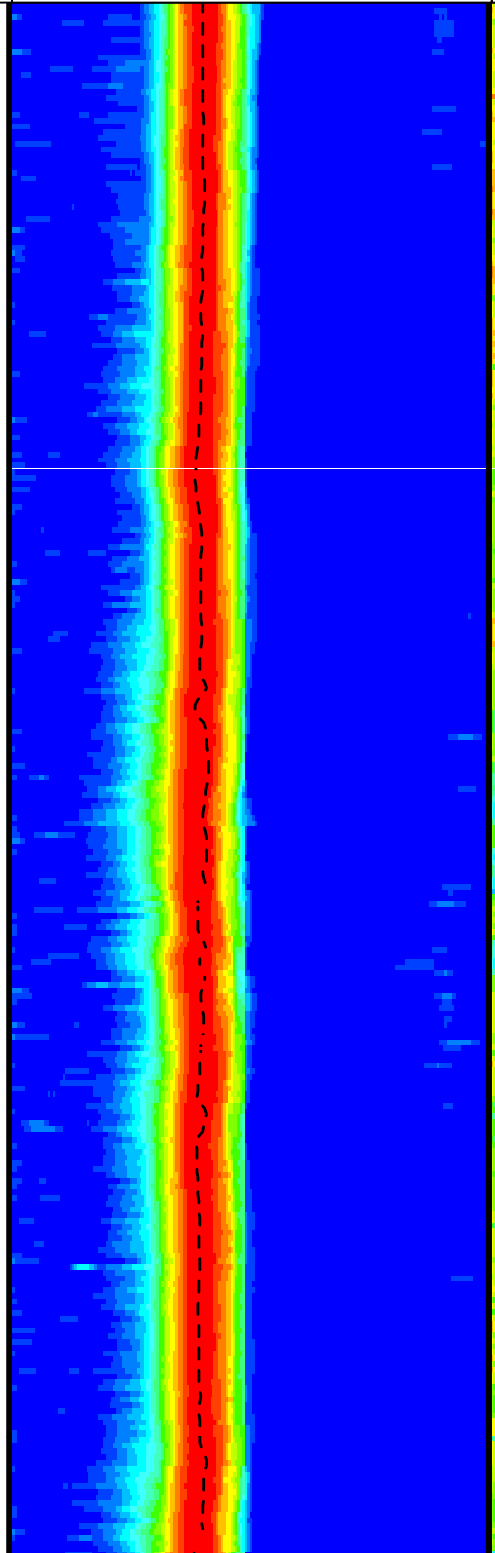
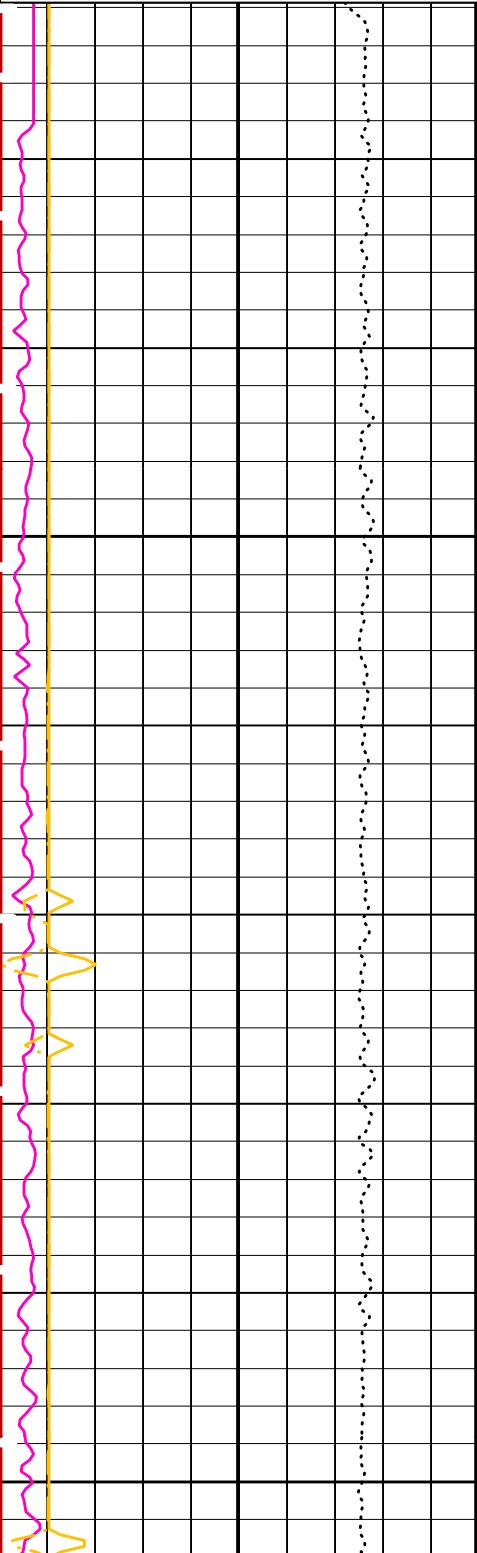
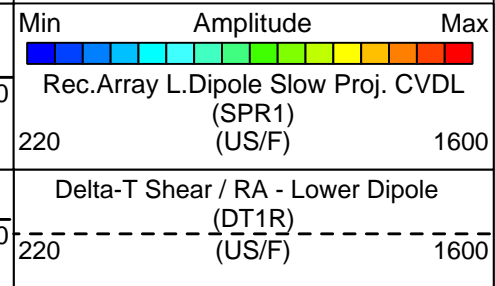
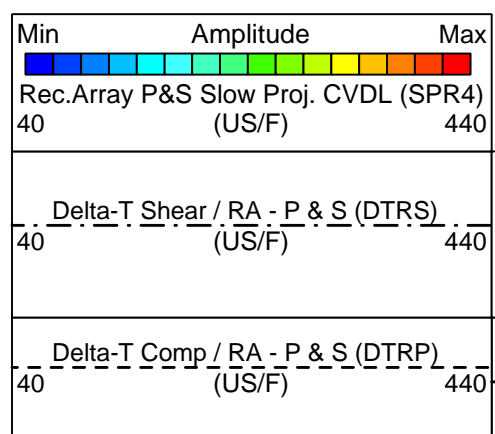
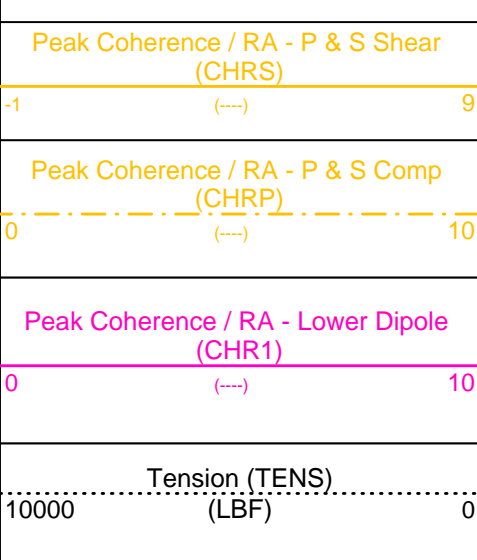
MEST-B	12C0-301	DTA-A	12C0-301
DSST-B	12C0-301	SGT-N	12C0-301
DTC-H	12C0-301		

PIP SUMMARY

Time Mark Every 60 S

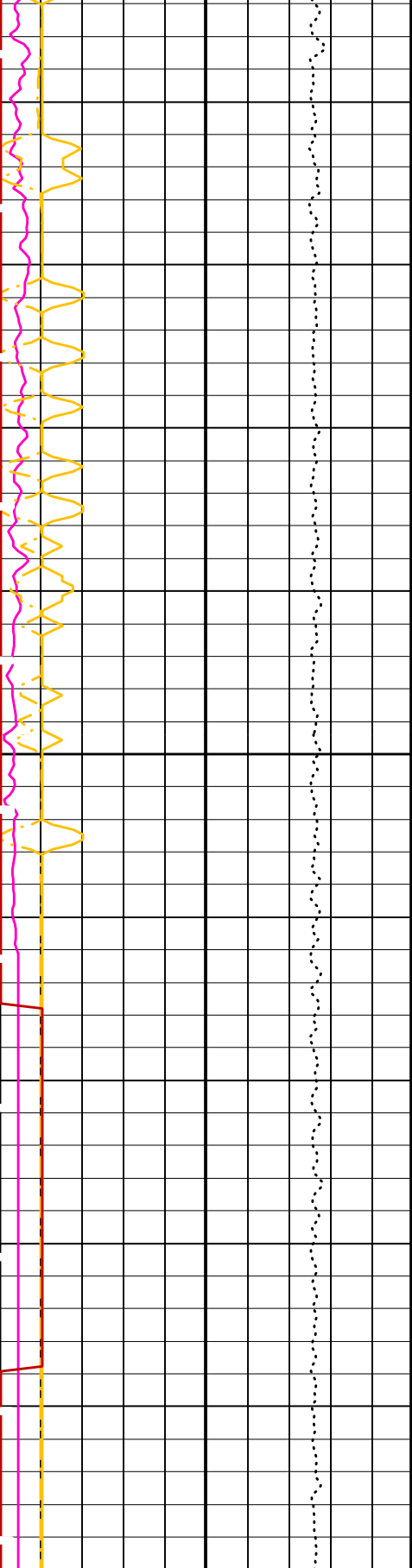
Waveform Data Copy Indicator 4 -
Monopole P&S (WCI4)

0 (---) 10



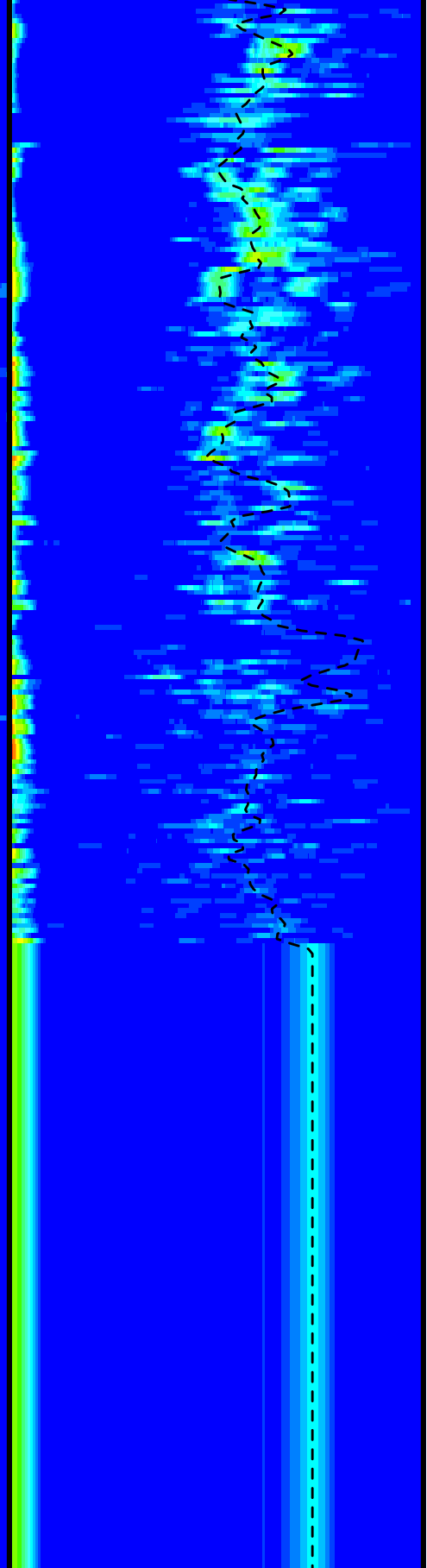
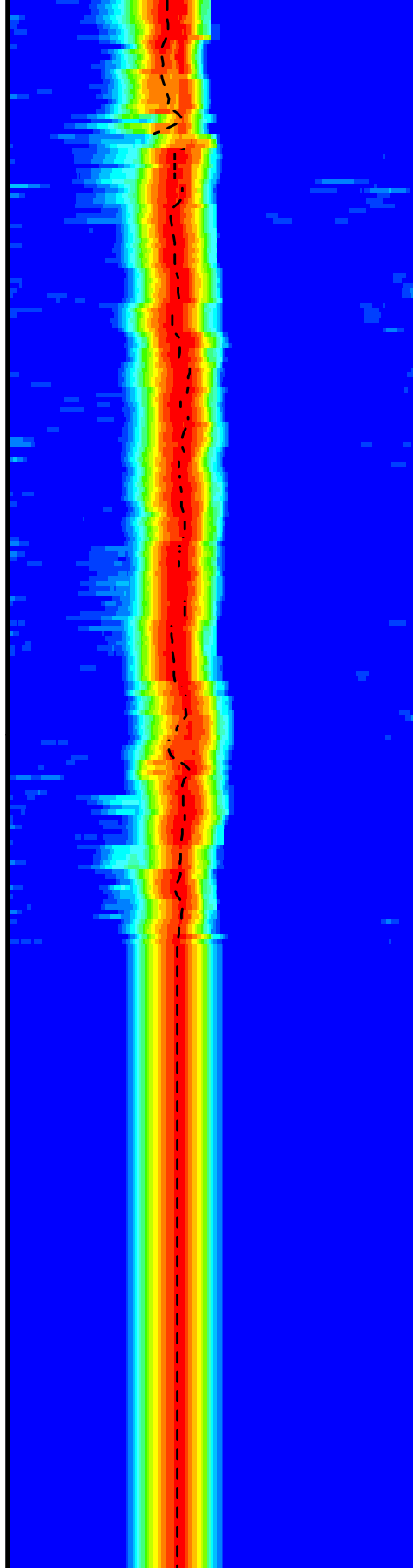
1050

1075



1100

1125



Tension (TENS)
(LBF) 10000 0

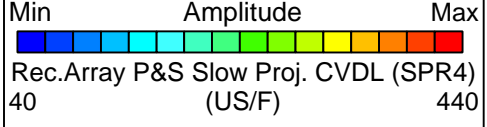
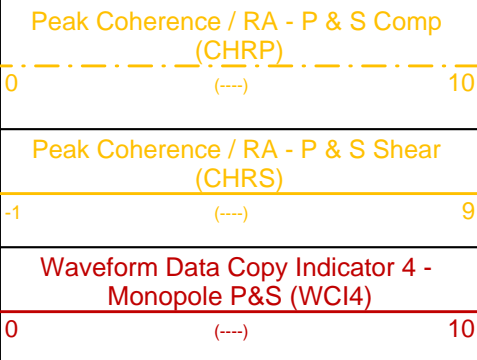
Peak Coherence / RA - Lower Dipole
(CHR1) 0 10

Delta-T Comp / RA - P & S (DTRP)
(US/F) 40 440

Delta-T Shear / RA - P & S (DTRS)
(US/F) 40 440

Delta-T Shear / RA - Lower Dipole
(DT1R) (US/F) 220 1600

Min Amplitude Max
Rec.Array L.Dipole Slow Proj. CVDL
(SPR1) (US/F) 220 1600



PIP SUMMARY

Time Mark Every 60 S

Parameters

DLIS Name	Description	Value
DSST-B: Dipole Shear Imager - B		
BHS	Borehole Status	OPEN
CASF	Label Casing Function - Monopole P&S	50
COLL	Label Slowness Lower Limit - Monopole P&S Compressional	40 US/F
COUL	Label Slowness Upper Limit - Monopole P&S Compressional	240 US/F
DDE1	Digitizing Delay 1	0 US
DDE4	Digitizing Delay 4	0 US
DDEX	Digitizing Delay X	0 US
DLCS	Label Compressional Source - Dipole Shear	USE
DSHL	Label Slowness Lower Limit - Dipole Shear	220 US/F
DSHU	Label Slowness Upper Limit - Dipole Shear	1600 US/F
DSI1	Digitizer Sample Interval 1	40 US
DSI4	Digitizer Sample Interval 4	10 US
DSIX	Digitizer Sample Interval X	40 US
DTCS	Compressional Delta-T Source for DTCO Channel	PS_COMP
DTF	Delta-T Fluid	189 US/F
DWC1	Digitizer Word Count 1	512
DWC4	Digitizer Word Count 4	512
DWCX	Digitizer Word Count X	512
FILG	Label Fill Gap Control - Monopole P&S	COMP_SHEAR
LFC	Label Formation Character - Monopole P&S	DYNAMIC
LTXG	Lower Dipole Transmitter Geometry	156 IN
MCS	Mean Casing Slowness	57 US/F
MTXG	Monopole Transmitter Geometry	186 IN
NWI1	Number Waveform Items 1	8
NWI4	Number Waveform Items 4	8
NWIX	Number Waveform Items X	0
RSMN	Label Shear/Compressional Minimum Ratio - Monopole P&S	1.4
RSMX	Label Shear/Compressional Maximum Ratio - Monopole P&S	2.12
RX1G	Receiver 1 Geometry	294 IN
RX2G	Receiver 2 Geometry	300 IN
RX3G	Receiver 3 Geometry	306 IN
RX4G	Receiver 4 Geometry	312 IN
RX5G	Receiver 5 Geometry	318 IN
RX6G	Receiver 6 Geometry	324 IN
RX7G	Receiver 7 Geometry	330 IN
RX8G	Receiver 8 Geometry	336 IN
SAM1	DSST Sonic Acquisition Mode 1 - Lower Dipole Mode	EVEN
SAM4	DSST Sonic Acquisition Mode 4 - High Frequency Monopole Mode for P&S	LFD_EVEN
SAMX	DSST Sonic Acquisition Mode X - Both Dipoles or Monopole Mode for Expert	OFF
SAS1	STC Sonic Array Status - Lower Dipole	255
SAS4	STC Sonic Array Status - Monopole P&S	255
SBO1	STC Search Band Offset - Lower Dipole	3000 US
SBO4	STC Search Band Offset - Monopole P&S	500 US
SBR4	STC Baseline Removal - Monopole P&S	ON
SBW1	STC Search Bandwidth - Lower Dipole	8000 US
SBW4	STC Search Bandwidth - Monopole P&S	2000 US
SFC1	STC Formation Character - Lower Dipole	SELECTABLE
SFC4	STC Formation Character - Monopole P&S	SELECTABLE
SFM1	STC Filter - Lower Dipole	B1-3K
SFM4	STC Filter - Monopole P&S	B3-12K
SHLL	Label Slowness Lower Limit - Monopole P&S Shear	75 US/F
SHUL	Label Slowness Upper Limit - Monopole P&S Shear	240 US/F
SLL1	STC Slowness Lower Limit - Lower Dipole	220 US/F
SLL4	STC Slowness Lower Limit - Monopole P&S	40 US/F
SST1	STC Slowness Step - Lower Dipole	4 US/F
SST4	STC Slowness Step - Monopole P&S	2 US/F
SSW1	STC Source Waveform - Lower Dipole	WF_SAM1
SSW4	STC Source Waveform - Monopole P&S	WF_SAM4

SLL	Label Slowness Lower Limit - Monopole Stoneley	220	US/F
STUL	Label Slowness Upper Limit - Monopole Stoneley	1600	US/F
SUL1	STC Slowness Upper Limit - Lower Dipole	1600	US/F
SUL4	STC Slowness Upper Limit - Monopole P&S	440	US/F
SWD1	STC Slowness Width - Lower Dipole	40	US/F
SWD4	STC Slowness Width - Monopole P&S	10	US/F
TBF1	STC Time for Baseline Fill - Lower Dipole	0	US
TBF4	STC Time for Baseline Fill - Monopole P&S	300	US
TLL1	STC Time Lower Limit - Lower Dipole	1530	US
TLL4	STC Time Lower Limit - Monopole P&S	150	US
TST1	STC Time Step - Lower Dipole	200	US
TST4	STC Time Step - Monopole P&S	50	US
TUL1	STC Time Upper Limit - Lower Dipole	20440	US
TUL4	STC Time Upper Limit - Monopole P&S	5110	US
TWD1	STC Time Width - Lower Dipole	2000	US
TWD4	STC Time Width - Monopole P&S	1000	US
TWI1	STC Integration Time Window - Lower Dipole	1600	US
TWI4	STC Integration Time Window - Monopole P&S	500	US
TWSX	Transmitter Waveform Select X	0	
WFM4	Waveform Mode 4	W1	
BHS	SGT-N: Scintillation Gamma-Ray - N Borehole Status		OPEN

Format: DSST_P_S_LOWER_VDL_COLOR Vertical Scale: 1:200 Graphics File Created: 30-Sep-2005 21:07

OP System Version: 12C0-301 MCM

MEST-B	12C0-301	DTA-A	12C0-301
DSST-B	12C0-301	SGT-N	12C0-301
DTC-H	12C0-301		

Output DLIS Files

DEFAULT	FMS_DSI_051LUP	FN:58	PRODUCER	30-Sep-2005 21:07
FMS_BKUP	FMS_DSI_051LUP	FN:59	PRODUCER	30-Sep-2005 21:07

Output DLIS Files

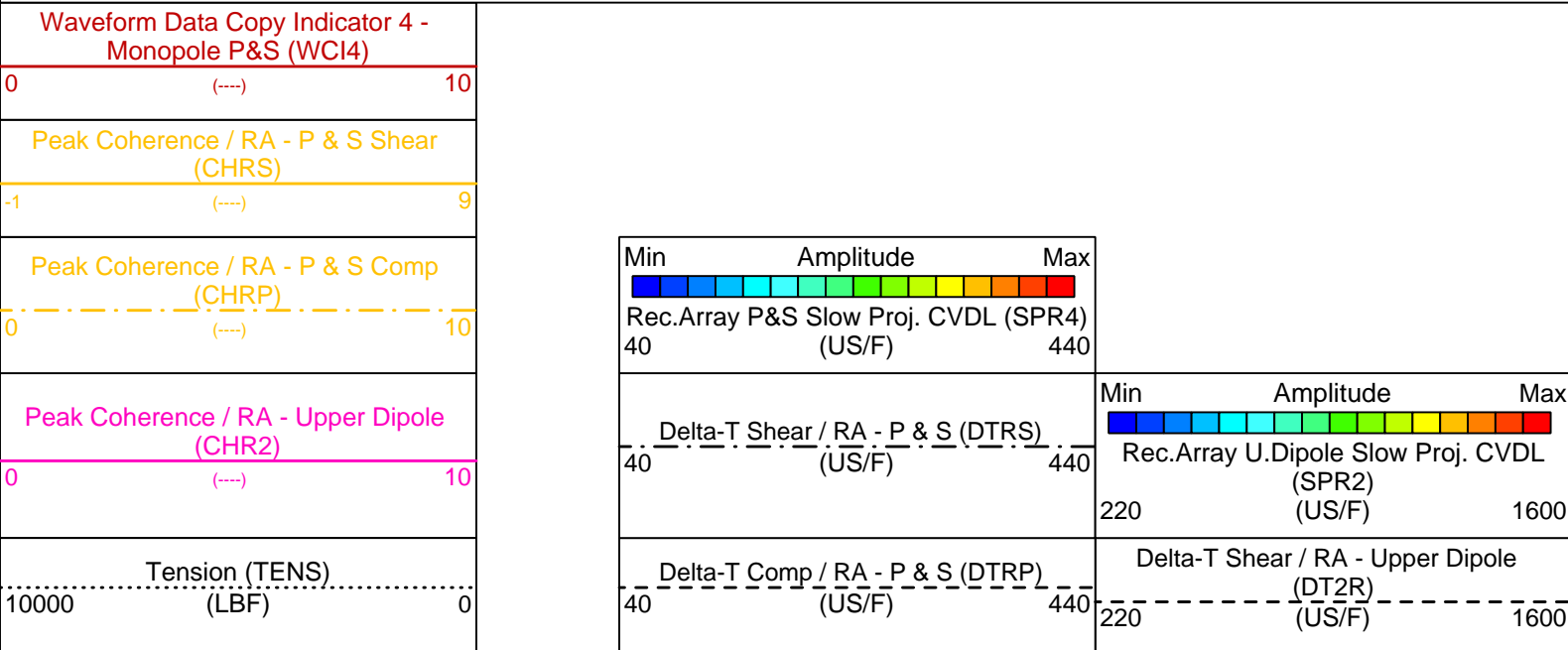
DEFAULT	FMS_DSI_051LUP	FN:58	PRODUCER	30-Sep-2005 21:07	1125.0 M	1035.9 M
FMS_BKUP	FMS_DSI_051LUP	FN:59	PRODUCER	30-Sep-2005 21:07	1125.0 M	1035.9 M

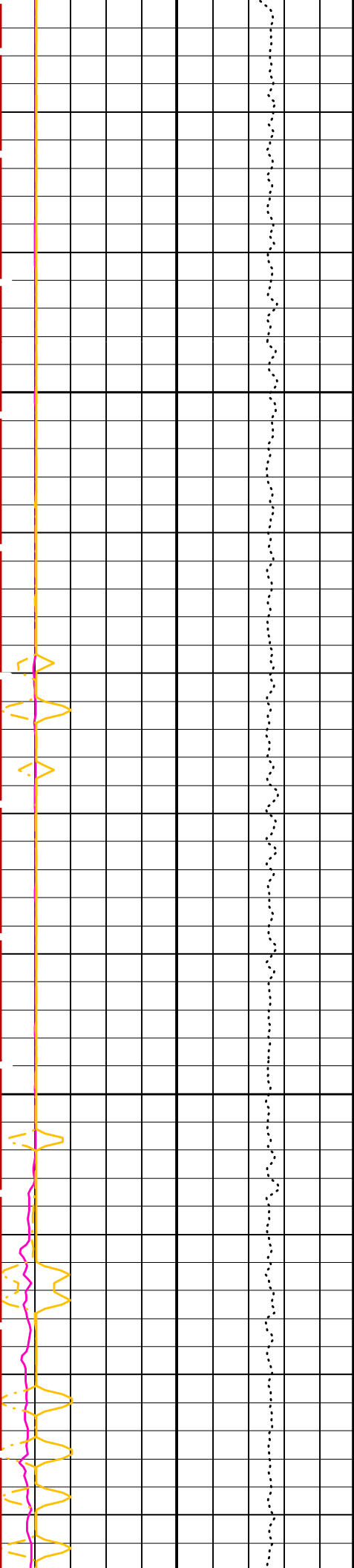
OP System Version: 12C0-301 MCM

MEST-B	12C0-301	DTA-A	12C0-301
DSST-B	12C0-301	SGT-N	12C0-301
DTC-H	12C0-301		

PIP SUMMARY

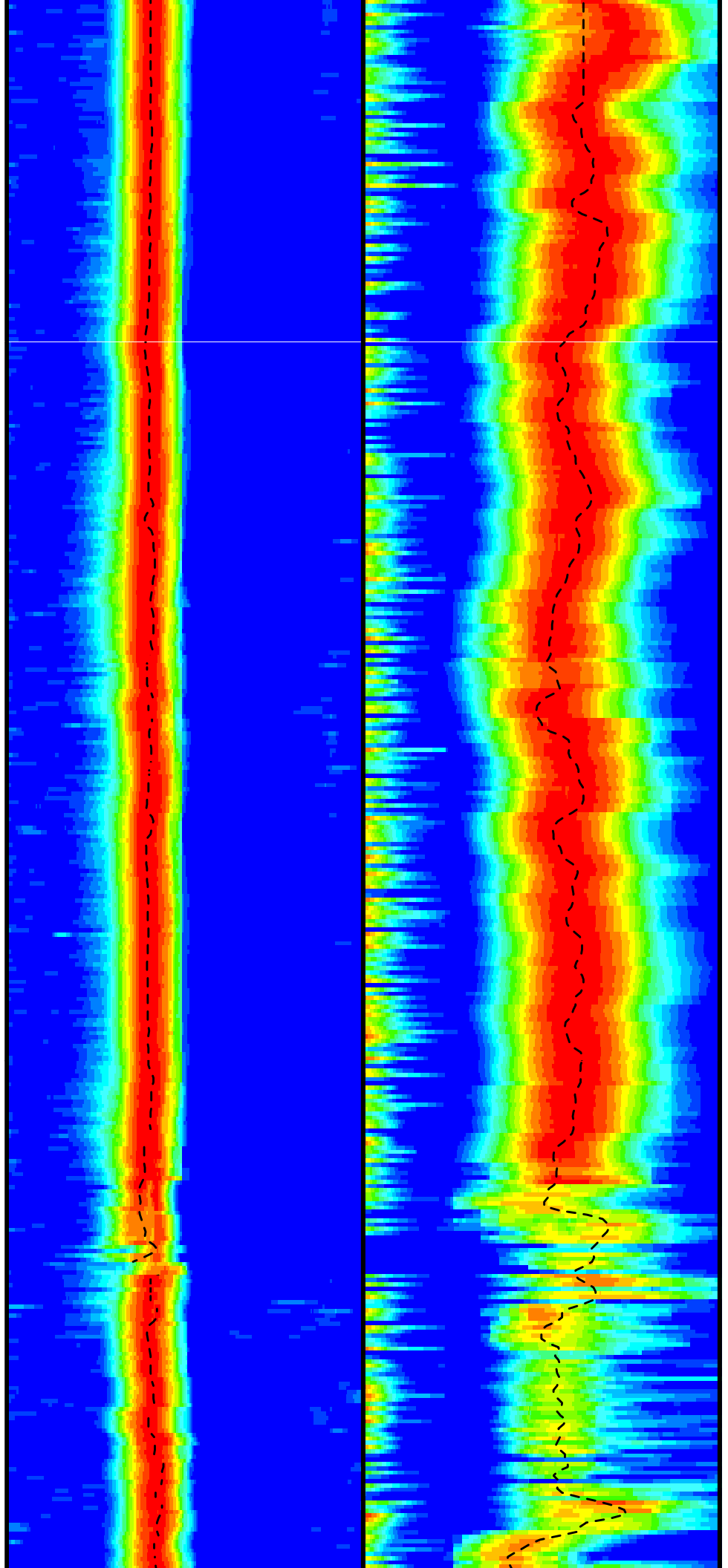
Time Mark Every 60 S

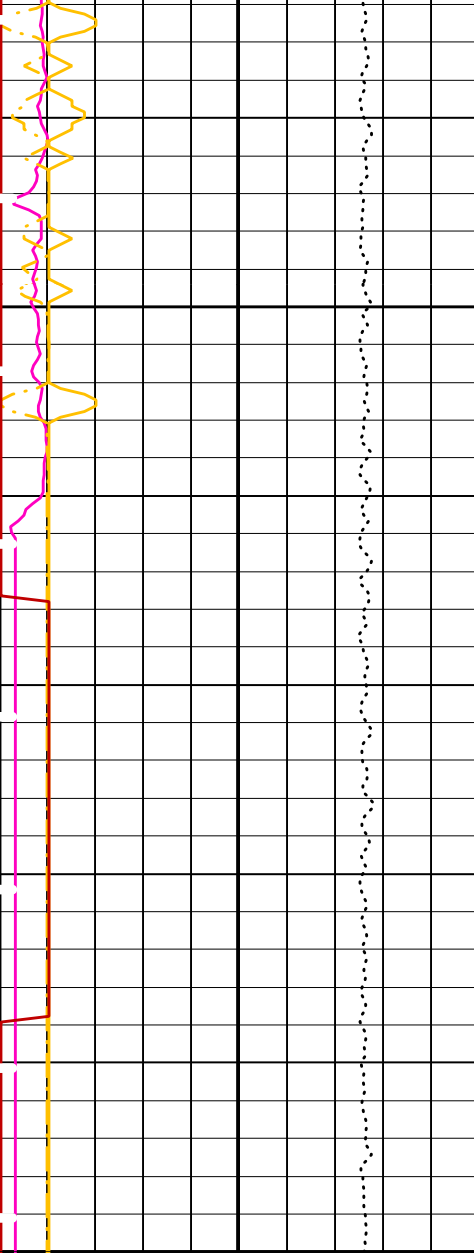




1050

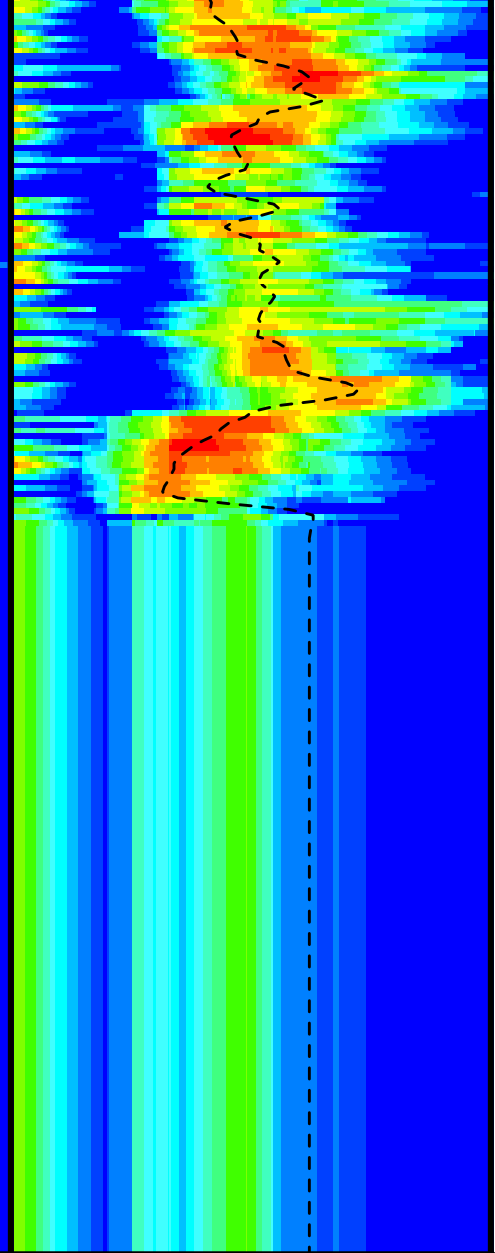
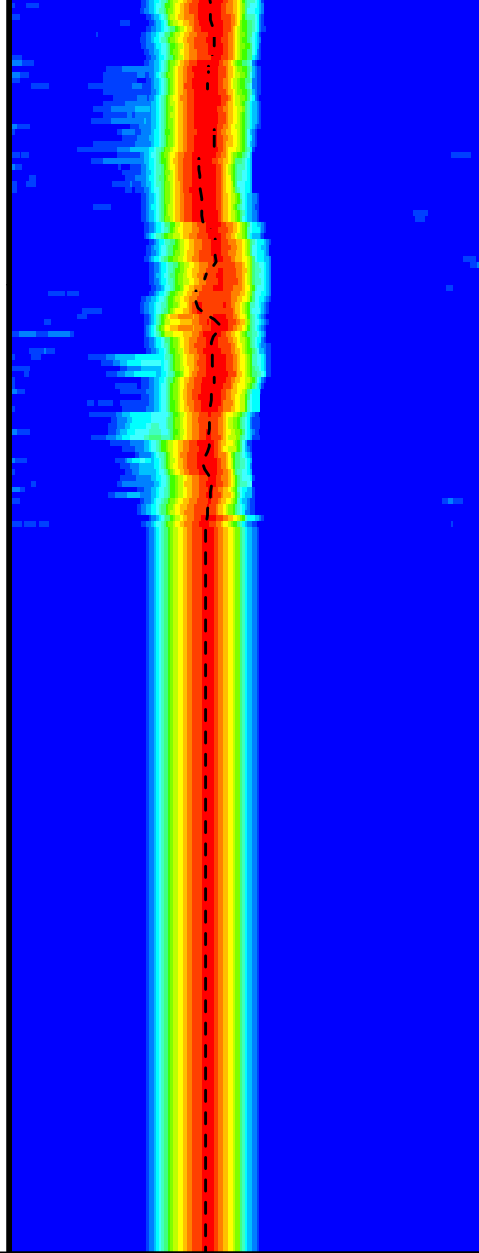
1075





1100

1125



Tension (TENS) (LBF)	10000	0
Peak Coherence / RA - Upper Dipole (CHR2)	0	10
Peak Coherence / RA - P & S Comp (CHRP)	0	10
Peak Coherence / RA - P & S Shear (CHRS)	-1	9
Waveform Data Copy Indicator 4 - Monopole P&S (WCI4)	0	10

Delta-T Comp / RA - P & S (DTRP) (US/F)	40	440
Delta-T Shear / RA - P & S (DTRS) (US/F)	40	440
Min Amplitude Max Rec.Array P&S Slow Proj. CVDL (SPR4) (US/F)	40	440

Delta-T Shear / RA - Upper Dipole (DT2R) (US/F)	220	1600
Min Amplitude Max Rec.Array U.Dipole Slow Proj. CVDL (SPR2) (US/F)	220	1600

PIP SUMMARY

Time Mark Every 60 S

Parameters

DLIS Name	Description	Value
-----------	-------------	-------

DSST-B: Dipole Shear Imager - B

BHS	Borehole Status	OPEN	
CASF	Label Casing Function - Monopole P&S	50	
COLL	Label Slowness Lower Limit - Monopole P&S Compressional	40	US/F
COUL	Label Slowness Upper Limit - Monopole P&S Compressional	240	US/F
DDE2	Digitizing Delay 2	0	US
DDE4	Digitizing Delay 4	0	US
DDEX	Digitizing Delay X	0	US
DLCS	Label Compressional Source - Dipole Shear	USE	
DSHL	Label Slowness Lower Limit - Dipole Shear	220	US/F
DSHU	Label Slowness Upper Limit - Dipole Shear	1600	US/F
DSI2	Digitizer Sample Interval 2	40	US
DSI4	Digitizer Sample Interval 4	10	US
DSIX	Digitizer Sample Interval X	40	US
DTCS	Compressional Delta-T Source for DTCS Channel	PS_COMP	
DTF	Delta-T Fluid	189	US/F
DWC2	Digitizer Word Count 2	512	
DWC4	Digitizer Word Count 4	512	
DWCX	Digitizer Word Count X	512	
FILG	Label Fill Gap Control - Monopole P&S	COMP_SHEAR	
LFC	Label Formation Character - Monopole P&S	DYNAMIC	
MCS	Mean Casing Slowness	57	US/F
MTXG	Monopole Transmitter Geometry	186	IN
NWI2	Number Waveform Items 2	8	
NWI4	Number Waveform Items 4	8	
NWIX	Number Waveform Items X	0	
RSMN	Label Shear/Compressional Minimum Ratio - Monopole P&S	1.4	
RSMX	Label Shear/Compressional Maximum Ratio - Monopole P&S	2.12	
RX1G	Receiver 1 Geometry	294	IN
RX2G	Receiver 2 Geometry	300	IN
RX3G	Receiver 3 Geometry	306	IN
RX4G	Receiver 4 Geometry	312	IN
RX5G	Receiver 5 Geometry	318	IN
RX6G	Receiver 6 Geometry	324	IN
RX7G	Receiver 7 Geometry	330	IN
RX8G	Receiver 8 Geometry	336	IN
SAM2	DSST Sonic Acquisition Mode 2 - Upper Dipole Mode	LFD_ODD	
SAM4	DSST Sonic Acquisition Mode 4 - High Frequency Monopole Mode for P&S	LFD_EVEN	
SAMX	DSST Sonic Acquisition Mode X - Both Dipoles or Monopole Mode for Expert	OFF	
SAS2	STC Sonic Array Status - Upper Dipole	255	
SAS4	STC Sonic Array Status - Monopole P&S	255	
SBO2	STC Search Band Offset - Upper Dipole	3000	US
SBO4	STC Search Band Offset - Monopole P&S	500	US
SBR4	STC Baseline Removal - Monopole P&S	ON	
SBW2	STC Search Bandwidth - Upper Dipole	8000	US
SBW4	STC Search Bandwidth - Monopole P&S	2000	US
SFC2	STC Formation Character - Upper Dipole	SELECTABLE	
SFC4	STC Formation Character - Monopole P&S	SELECTABLE	
SFM2	STC Filter - Upper Dipole	B.3-1.5K	
SFM4	STC Filter - Monopole P&S	B3-12K	
SHLL	Label Slowness Lower Limit - Monopole P&S Shear	75	US/F
SHUL	Label Slowness Upper Limit - Monopole P&S Shear	240	US/F
SLL2	STC Slowness Lower Limit - Upper Dipole	220	US/F
SLL4	STC Slowness Lower Limit - Monopole P&S	40	US/F
SST2	STC Slowness Step - Upper Dipole	4	US/F
SST4	STC Slowness Step - Monopole P&S	2	US/F
SSW2	STC Source Waveform - Upper Dipole	WF_SAM2	
SSW4	STC Source Waveform - Monopole P&S	WF_SAM4	
STLL	Label Slowness Lower Limit - Monopole Stoneley	220	US/F
STUL	Label Slowness Upper Limit - Monopole Stoneley	1600	US/F
SUL2	STC Slowness Upper Limit - Upper Dipole	1600	US/F
SUL4	STC Slowness Upper Limit - Monopole P&S	440	US/F
SWD2	STC Slowness Width - Upper Dipole	40	US/F
SWD4	STC Slowness Width - Monopole P&S	10	US/F
TBF2	STC Time for Baseline Fill - Upper Dipole	0	US
TBF4	STC Time for Baseline Fill - Monopole P&S	300	US
TLL2	STC Time Lower Limit - Upper Dipole	1420	US
TLL4	STC Time Lower Limit - Monopole P&S	150	US
TST2	STC Time Step - Upper Dipole	200	US
TST4	STC Time Step - Monopole P&S	50	US
TUL2	STC Time Upper Limit - Upper Dipole	20440	US
TUL4	STC Time Upper Limit - Monopole P&S	5110	US
TWD2	STC Time Width - Upper Dipole	2000	US
TWD4	STC Time Width - Monopole P&S	1000	US
TWI2	STC Integration Time Window - Upper Dipole	1600	US
TWI4	STC Integration Time Window - Monopole P&S	500	US
TWSX	Transmitter Waveform Select X	0	
UTXG	Upper Dipole Transmitter Geometry	162	IN
WFM4	Waveform Mode 4	W1	

SGT-N: Scintillation Gamma-Ray - N

BHS	Borehole Status	OPEN	
-----	-----------------	------	--

OP System Version: 12C0-301 MCM

MEST-B	12C0-301	DTA-A	12C0-301
DSST-B	12C0-301	SGT-N	12C0-301
DTC-H	12C0-301		

Output DLIS Files

DEFAULT	FMS_DSI_051LUP	FN:58	PRODUCER	30-Sep-2005 21:07
FMS_BKUP	FMS_DSI_051LUP	FN:59	PRODUCER	30-Sep-2005 21:07

Output DLIS Files

DEFAULT	FMS_DSI_051LUP	FN:58	PRODUCER	30-Sep-2005 21:07	1125.0 M	1035.9 M
FMS_BKUP	FMS_DSI_051LUP	FN:59	PRODUCER	30-Sep-2005 21:07	1125.0 M	1035.9 M

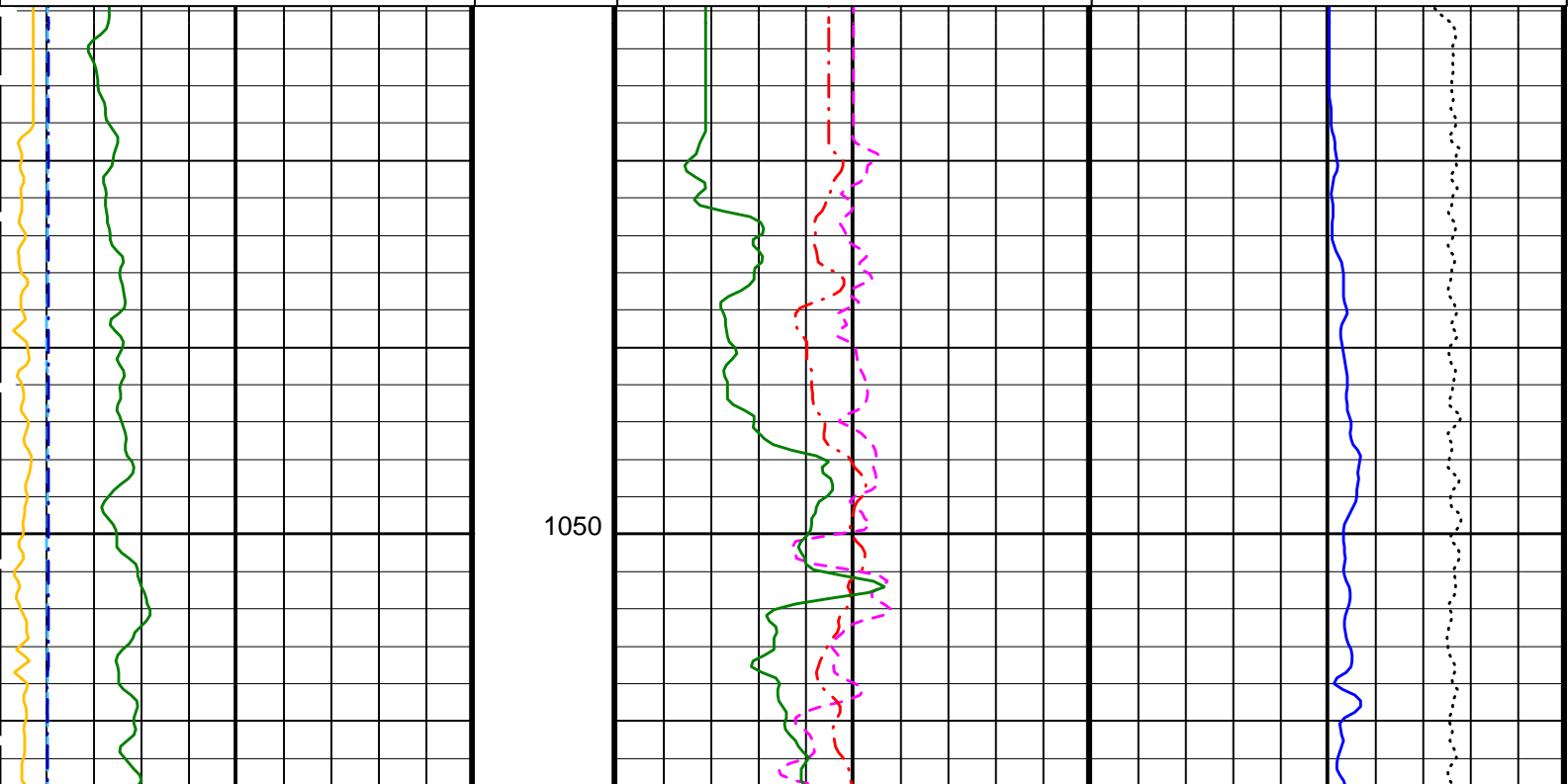
OP System Version: 12C0-301 MCM

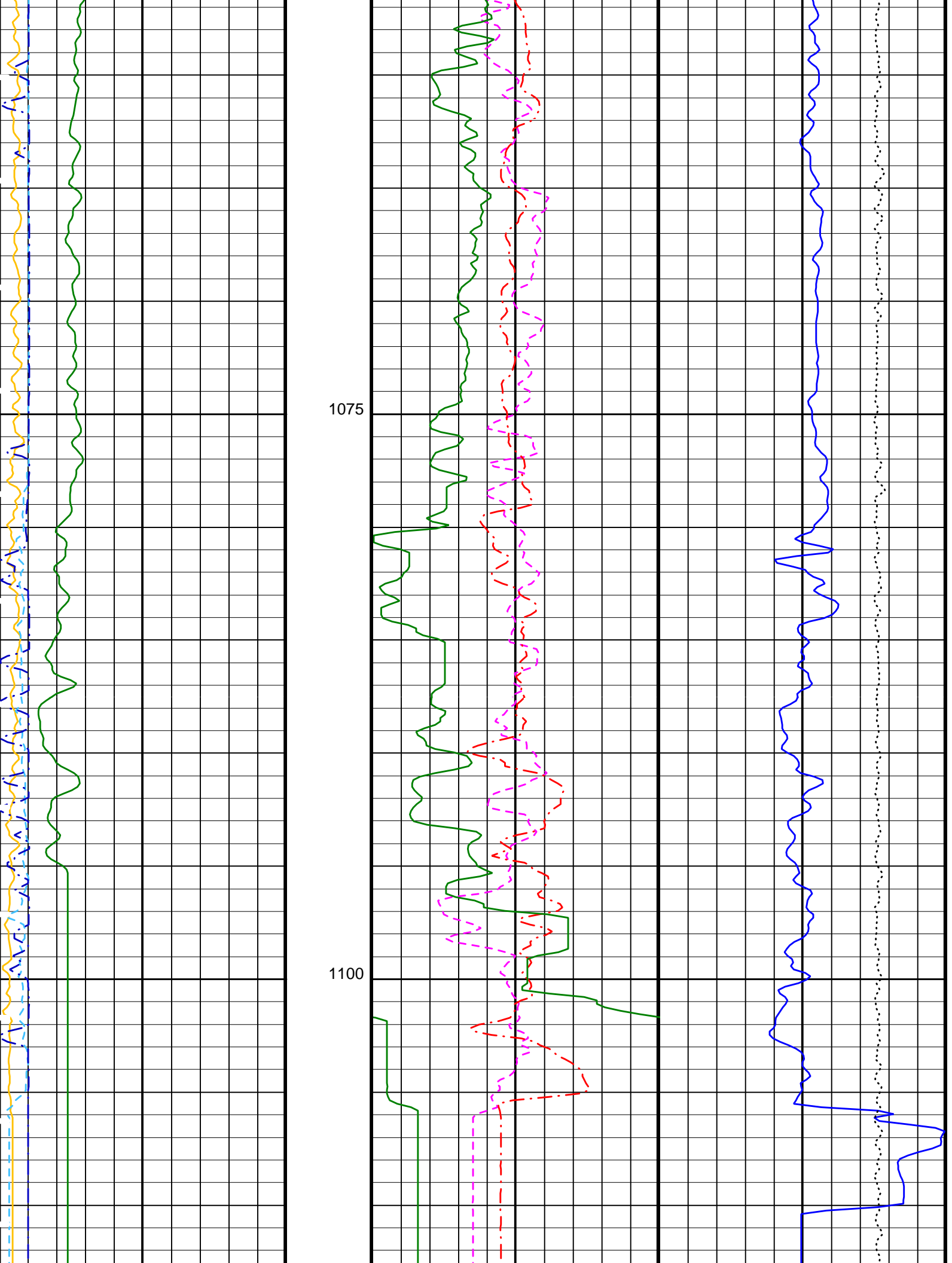
MEST-B	12C0-301	DTA-A	12C0-301
DSST-B	12C0-301	SGT-N	12C0-301
DTC-H	12C0-301		

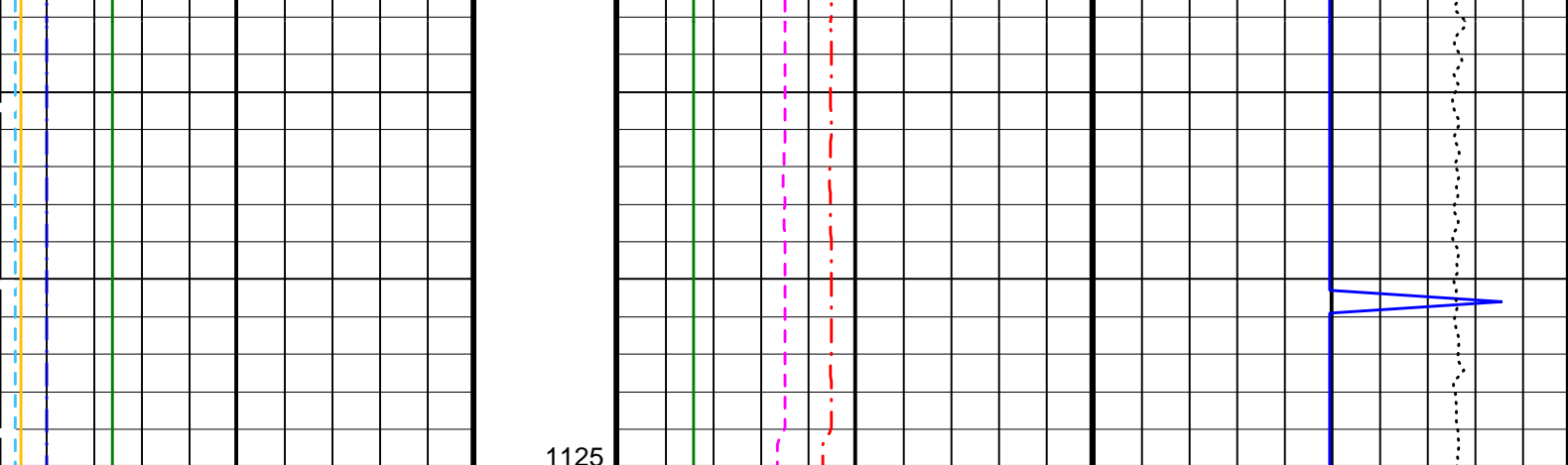
PIP SUMMARY

Time Mark Every 60 S

Peak Coherence / RA - P & S Comp (CHRP)	0	(---)	10			
Peak Coherence / RA - Upper Dipole (CHR2)	0	(---)	10			
Peak Coherence / RA - Lower Dipole (CHR1)	0	(---)	10			
Gamma Ray (GR) (GAPI)	0		150			
Delta-T Stoneley (DTST)	1600	(US/F)	300			
Delta-T Shear - Upper Dipole (DT2)	1600	(US/F)	300	10000	(LBF)	0
Delta-T Shear - Lower Dipole (DT1)	1600	(US/F)	300	250	(US/F)	150
Delta-T Comp - P & S (DT4P)						







1125

Gamma Ray (GR) (GAPI)	0	150	Delta-T Shear - Lower Dipole (DT1) (US/F)	1600	300	Delta-T Comp - P & S (DT4P) (US/F)	250	150
Peak Coherence / RA - Lower Dipole (CHR1)	0	10	Delta-T Shear - Upper Dipole (DT2) (US/F)	1600	300	Tension (TENS) (LBF)	10000	0
Peak Coherence / RA - Upper Dipole (CHR2)	0	10	Delta-T Stoneley (DTST) (US/F)	1600	300			
Peak Coherence / RA - P & S Comp (CHRP)	0	10						

PIP SUMMARY

Time Mark Every 60 S

Parameters

DLIS Name	Description	Value
DSST-B: Dipole Shear Imager - B		
BHS	Borehole Status	OPEN
CASF	Label Casing Function - Monopole P&S	50
COLL	Label Slowness Lower Limit - Monopole P&S Compressional	40 US/F
COUL	Label Slowness Upper Limit - Monopole P&S Compressional	240 US/F
DLCS	Label Compressional Source - Dipole Shear	USE
DSHL	Label Slowness Lower Limit - Dipole Shear	220 US/F
DSHU	Label Slowness Upper Limit - Dipole Shear	1600 US/F
DTCS	Compressional Delta-T Source for DTCS Channel	PS_COMP
DTF	Delta-T Fluid	189 US/F
FILG	Label Fill Gap Control - Monopole P&S	COMP_SHEAR
LFC	Label Formation Character - Monopole P&S	DYNAMIC
LTXG	Lower Dipole Transmitter Geometry	156 IN
MCS	Mean Casing Slowness	57 US/F
MTXG	Monopole Transmitter Geometry	186 IN
NWI1	Number Waveform Items 1	8
NWI2	Number Waveform Items 2	8
NWI4	Number Waveform Items 4	8
NWIX	Number Waveform Items X	0
RSMN	Label Shear/Compressional Minimum Ratio - Monopole P&S	1.4
RSMX	Label Shear/Compressional Maximum Ratio - Monopole P&S	2.12
RX1G	Receiver 1 Geometry	294 IN
RX2G	Receiver 2 Geometry	300 IN
RX3G	Receiver 3 Geometry	306 IN
RX4G	Receiver 4 Geometry	312 IN
RX5G	Receiver 5 Geometry	318 IN
RX6G	Receiver 6 Geometry	324 IN
RX7G	Receiver 7 Geometry	330 IN
RX8G	Receiver 8 Geometry	336 IN
SAS1	STC Sonic Array Status - Lower Dipole	255
SAS2	STC Sonic Array Status - Upper Dipole	255
SAS4	STC Sonic Array Status - Monopole P&S	255
SFM1	STC Filter - Lower Dipole	B1-3K
SFM2	STC Filter - Upper Dipole	B.3-1.5K
SHLL	Label Slowness Lower Limit - Monopole P&S Shear	75 US/F
SHUL	Label Slowness Upper Limit - Monopole P&S Shear	240 US/F
SSW1	STC Source Waveform - Lower Dipole	WF_SAM1
SSW2	STC Source Waveform - Upper Dipole	WF_SAM2
SSW4	STC Source Waveform - Monopole P&S	WF_SAM4

STLL	Label Slowness Lower Limit - Monopole Stoneley	220	US/F
STUL	Label Slowness Upper Limit - Monopole Stoneley	1600	US/F
TWI1	STC Integration Time Window - Lower Dipole	1600	US
TWI2	STC Integration Time Window - Upper Dipole	1600	US
TWI4	STC Integration Time Window - Monopole P&S	500	US
UTXG	Upper Dipole Transmitter Geometry	162	IN
BHS	SGT-N: Scintillation Gamma-Ray - N Borehole Status		OPEN

Format: DSI_Field_Print Vertical Scale: 1:200 Graphics File Created: 30-Sep-2005 21:07

OP System Version: 12C0-301
MCM

MEST-B	12C0-301	DTA-A	12C0-301
DSST-B	12C0-301	SGT-N	12C0-301
DTC-H	12C0-301		

Output DLIS Files

DEFAULT	FMS_DSI_051LUP	FN:58	PRODUCER	30-Sep-2005 21:07
FMS_BKUP	FMS_DSI_051LUP	FN:59	PRODUCER	30-Sep-2005 21:07



First Pass

MAXIS Field Log

Input DLIS Files

DEFAULT	FMS_DSI_049LUP	FN:54	PRODUCER	30-Sep-2005 20:04	1167.7 M	1034.9 M
---------	----------------	-------	----------	-------------------	----------	----------

Output DLIS Files

DEFAULT	FMS_DSI_055PUP	FN:62	PRODUCER	30-Sep-2005 22:13	1167.7 M	1035.4 M
---------	----------------	-------	----------	-------------------	----------	----------

OP System Version: 12C0-301
MCM

MEST-B	12C0-301	DTA-A	12C0-301
DSST-B	12C0-301	SGT-N	12C0-301
DTC-H	12C0-301		

PIP SUMMARY

Time Mark Every 60 S

Waveform Data Copy Indicator 4 - Monopole P&S (WCI4)

0 (---) 10

Peak Coherence / RA - P & S Shear (CHRS)

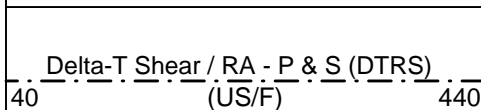
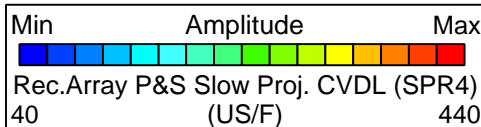
-1 (---) 9

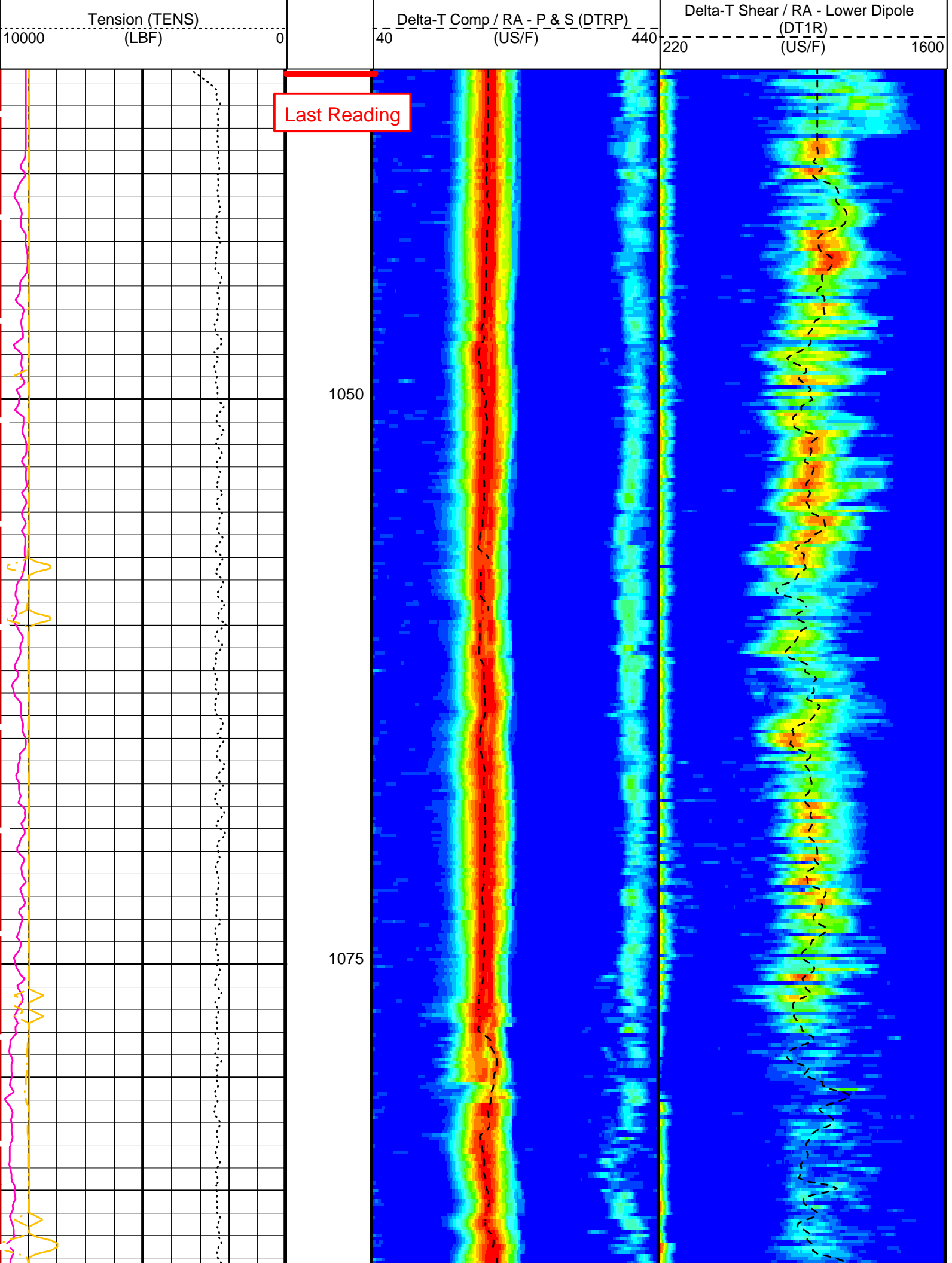
Peak Coherence / RA - P & S Comp (CHRP)

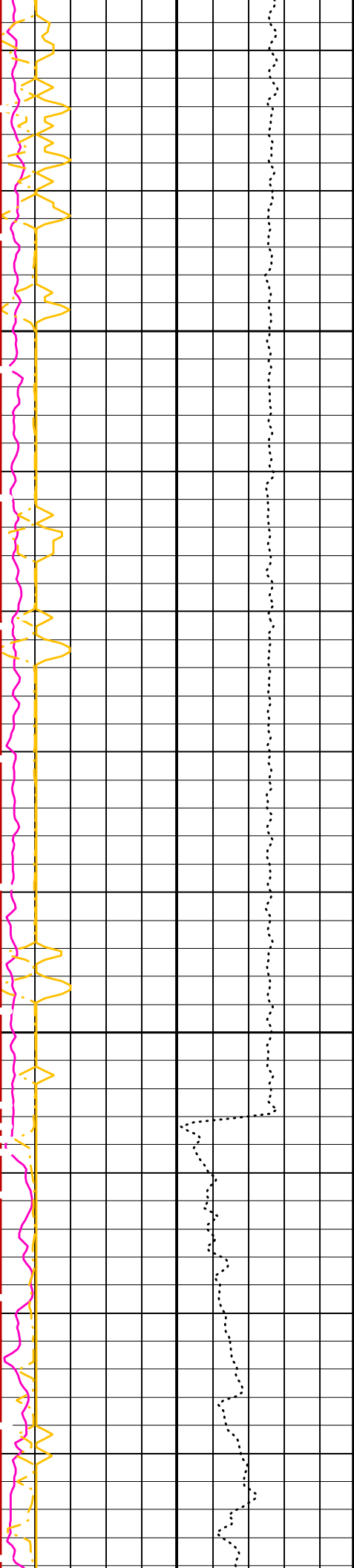
0 (---) 10

Peak Coherence / RA - Lower Dipole (CHR1)

0 (---) 10

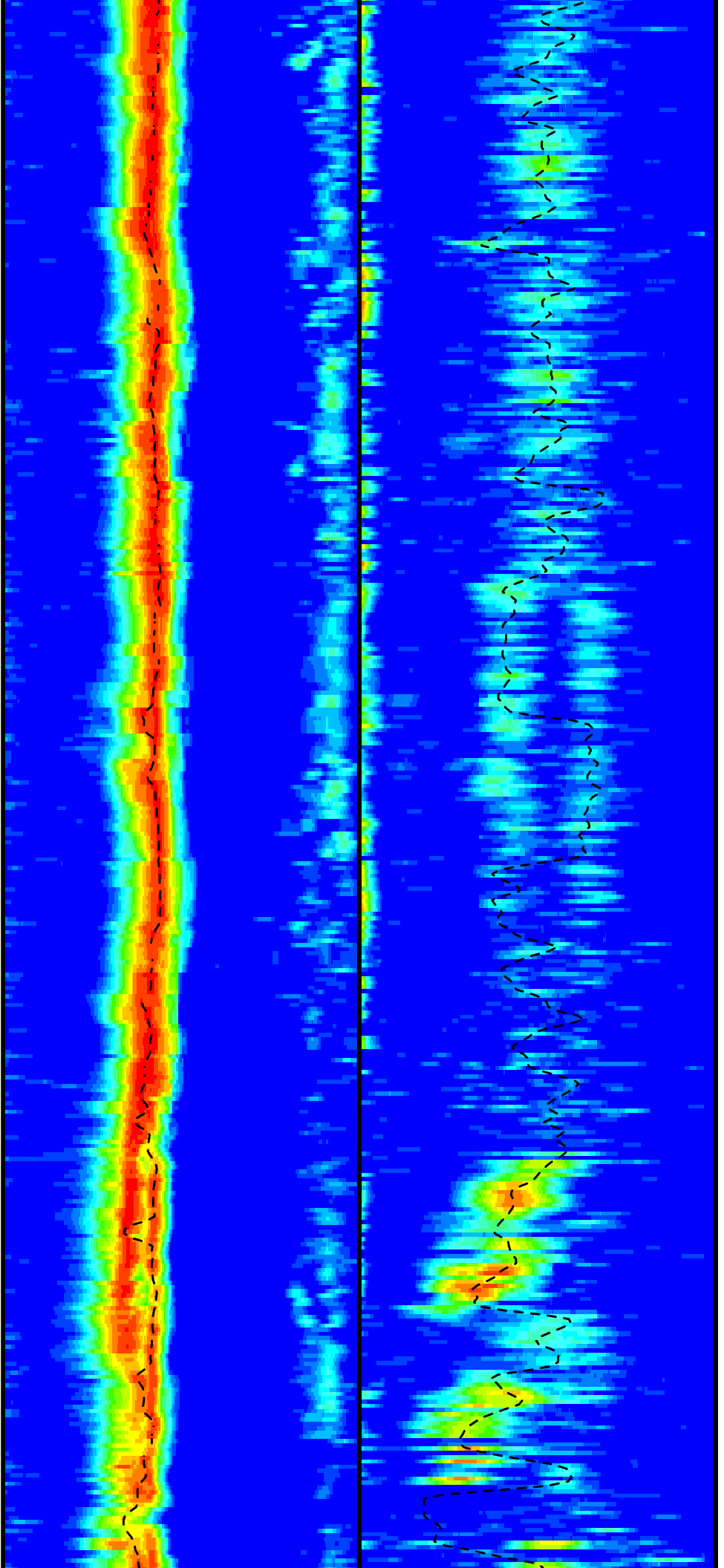


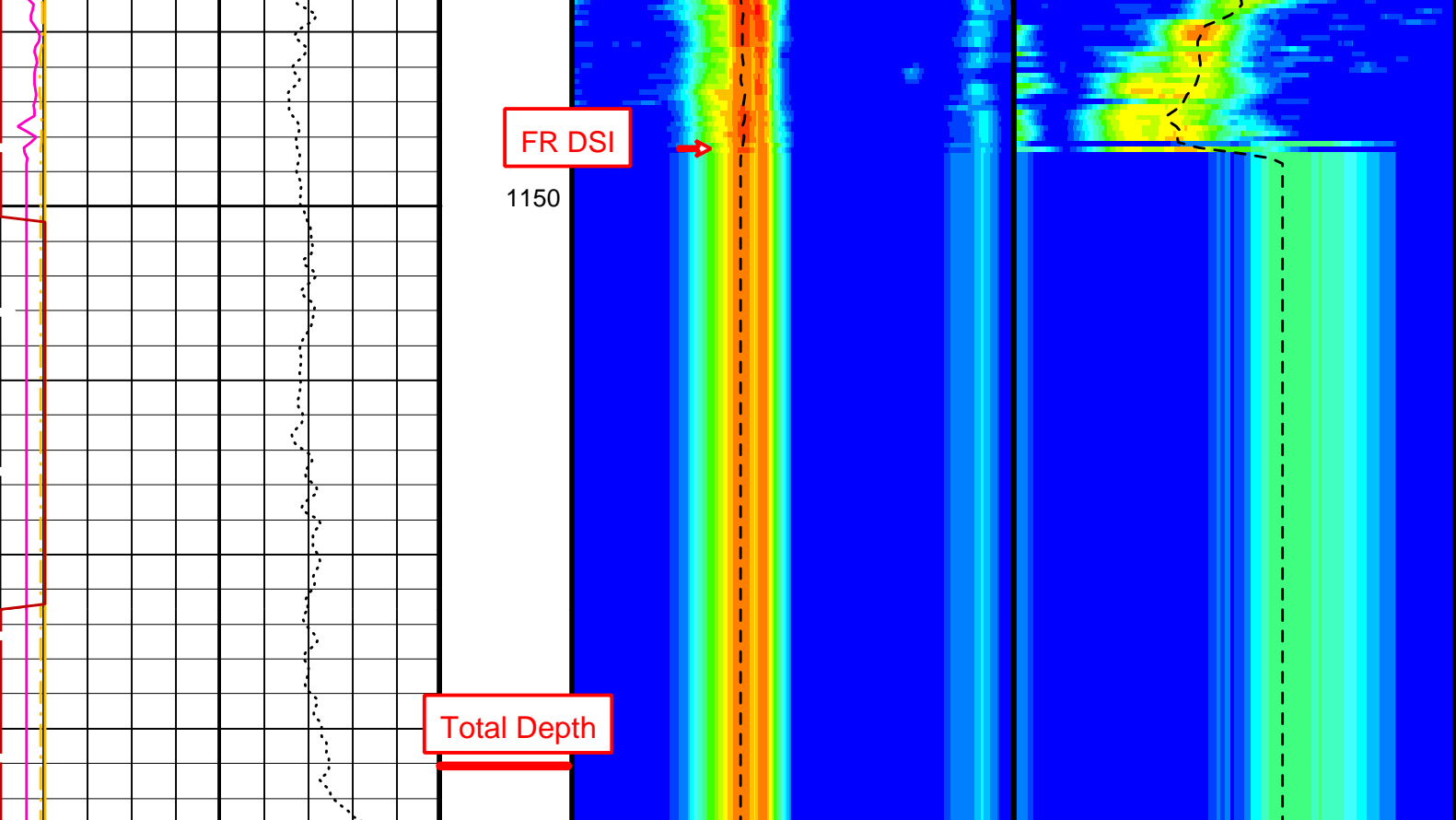




1100

1125





<p>Tension (TENS) (LBF)</p> <p>10000 0</p>	<p>Delta-T Comp / RA - P & S (DTRP) (US/F)</p> <p>40 440</p>	<p>Delta-T Shear / RA - Lower Dipole (DT1R) (US/F)</p> <p>220 1600</p>
<p>Peak Coherence / RA - Lower Dipole (CHR1)</p> <p>0 10</p>	<p>Delta-T Shear / RA - P & S (DTRS) (US/F)</p> <p>40 440</p>	<p>Min Amplitude Max Rec.Array L.Dipole Slow Proj. CVDL (SPR1) (US/F)</p> <p>220 1600</p>
<p>Peak Coherence / RA - P & S Comp (CHRP)</p> <p>0 10</p>	<p>Min Amplitude Max Rec.Array P&S Slow Proj. CVDL (SPR4) (US/F)</p> <p>40 440</p>	
<p>Peak Coherence / RA - P & S Shear (CHRS)</p> <p>-1 9</p>		
<p>Waveform Data Copy Indicator 4 - Monopole P&S (WCI4)</p> <p>0 10</p>		

PIP SUMMARY

Time Mark Every 60 S

Parameters

DLIS Name	Description	Value
DSST-B: Dipole Shear Imager - B		
BHS	Borehole Status	OPEN
CASF	Label Casing Function - Monopole P&S	50
COLL	Label Slowness Lower Limit - Monopole P&S Compressional	40 US/F
COUL	Label Slowness Upper Limit - Monopole P&S Compressional	240 US/F
DDE1	Digitizing Delay 1	0 US
DDE4	Digitizing Delay 4	0 US
DDEX	Digitizing Delay X	0 US
DLCS	Label Compressional Source - Dipole Shear	USE
DSHL	Label Slowness Lower Limit - Dipole Shear	220 US/F
DSHU	Label Slowness Upper Limit - Dipole Shear	1600 US/F
DSI1	Digitizer Sample Interval 1	40 US
DSI4	Digitizer Sample Interval 4	10 US
DSIX	Digitizer Sample Interval X	40 US

DTCS	Compressional Delta-T Source for DTCO Channel	PS_COMP	00
DTF	Delta-T Fluid		189 US/F
DWC1	Digitizer Word Count 1		512
DWC4	Digitizer Word Count 4		512
DWCX	Digitizer Word Count X		512
FILG	Label Fill Gap Control - Monopole P&S	COMP_SHEAR	
LFC	Label Formation Character - Monopole P&S	DYNAMIC	
LTXG	Lower Dipole Transmitter Geometry		156 IN
MCS	Mean Casing Slowness		57 US/F
MTXG	Monopole Transmitter Geometry		186 IN
NW11	Number Waveform Items 1		8
NW14	Number Waveform Items 4		8
NWIX	Number Waveform Items X		0
RSMN	Label Shear/Compressional Minimum Ratio - Monopole P&S		1.4
RSMX	Label Shear/Compressional Maximum Ratio - Monopole P&S		2.12
RX1G	Receiver 1 Geometry		294 IN
RX2G	Receiver 2 Geometry		300 IN
RX3G	Receiver 3 Geometry		306 IN
RX4G	Receiver 4 Geometry		312 IN
RX5G	Receiver 5 Geometry		318 IN
RX6G	Receiver 6 Geometry		324 IN
RX7G	Receiver 7 Geometry		330 IN
RX8G	Receiver 8 Geometry		336 IN
SAM1	DSST Sonic Acquisition Mode 1 - Lower Dipole Mode	EVEN	
SAM4	DSST Sonic Acquisition Mode 4 - High Frequency Monopole Mode for P&S	LFD_EVEN	
SAMX	DSST Sonic Acquisition Mode X - Both Dipoles or Monopole Mode for Expert	OFF	
SAS1	STC Sonic Array Status - Lower Dipole		255
SAS4	STC Sonic Array Status - Monopole P&S		255
SBO1	STC Search Band Offset - Lower Dipole		3000 US
SBO4	STC Search Band Offset - Monopole P&S		500 US
SBR4	STC Baseline Removal - Monopole P&S		ON
SBW1	STC Search Bandwidth - Lower Dipole		8000 US
SBW4	STC Search Bandwidth - Monopole P&S		2000 US
SFC1	STC Formation Character - Lower Dipole	SELECTABLE	
SFC4	STC Formation Character - Monopole P&S	SELECTABLE	
SFM1	STC Filter - Lower Dipole	B1-3K	
SFM4	STC Filter - Monopole P&S	B3-12K	
SHLL	Label Slowness Lower Limit - Monopole P&S Shear		75 US/F
SHUL	Label Slowness Upper Limit - Monopole P&S Shear		240 US/F
SLL1	STC Slowness Lower Limit - Lower Dipole		220 US/F
SLL4	STC Slowness Lower Limit - Monopole P&S		40 US/F
SST1	STC Slowness Step - Lower Dipole		4 US/F
SST4	STC Slowness Step - Monopole P&S		2 US/F
SSW1	STC Source Waveform - Lower Dipole	WF_SAM1	
SSW4	STC Source Waveform - Monopole P&S	WF_SAM4	
STLL	Label Slowness Lower Limit - Monopole Stoneley		220 US/F
STUL	Label Slowness Upper Limit - Monopole Stoneley		1600 US/F
SUL1	STC Slowness Upper Limit - Lower Dipole		1600 US/F
SUL4	STC Slowness Upper Limit - Monopole P&S		440 US/F
SWD1	STC Slowness Width - Lower Dipole		40 US/F
SWD4	STC Slowness Width - Monopole P&S		10 US/F
TBF1	STC Time for Baseline Fill - Lower Dipole		0 US
TBF4	STC Time for Baseline Fill - Monopole P&S		300 US
TLL1	STC Time Lower Limit - Lower Dipole		1530 US
TLL4	STC Time Lower Limit - Monopole P&S		150 US
TST1	STC Time Step - Lower Dipole		200 US
TST4	STC Time Step - Monopole P&S		50 US
TUL1	STC Time Upper Limit - Lower Dipole		20440 US
TUL4	STC Time Upper Limit - Monopole P&S		5110 US
TWD1	STC Time Width - Lower Dipole		2000 US
TWD4	STC Time Width - Monopole P&S		1000 US
TWI1	STC Integration Time Window - Lower Dipole		1600 US
TWI4	STC Integration Time Window - Monopole P&S		500 US
TWSX	Transmitter Waveform Select X		0
WFM4	Waveform Mode 4	W1	
BHS	SGT-N: Scintillation Gamma-Ray - N Borehole Status	OPEN	
DO	System and Miscellaneous Depth Offset for Playback	0.0	M
PP	Playback Processing	RECOMPUTE	

Format: DSST_P_S_LOWER_VDL_COLOR Vertical Scale: 1:200 Graphics File Created: 30-Sep-2005 22:13

OP System Version: 12C0-301
MCM

MEST-B	12C0-301	DTA-A	12C0-301
DSST-B	12C0-301	SGT-N	12C0-301
DTC-H	12C0-301		

Input DLIS Files

Output DLIS Files

Input DLIS Files

Output DLIS Files

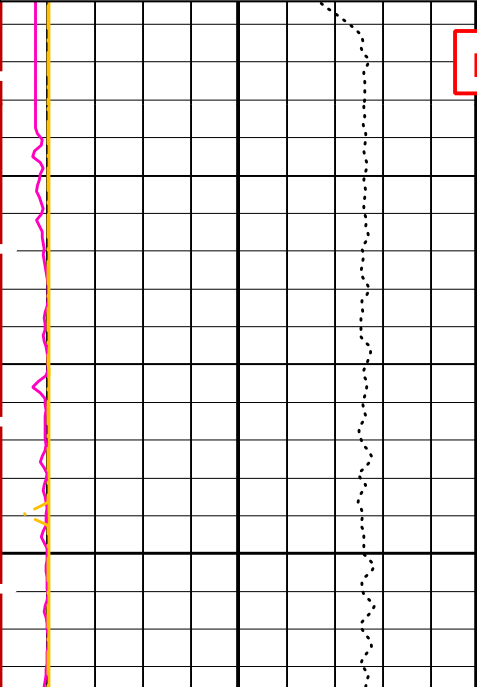
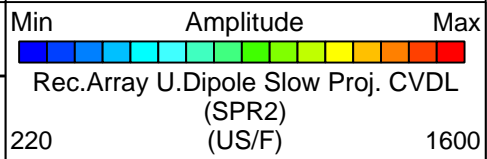
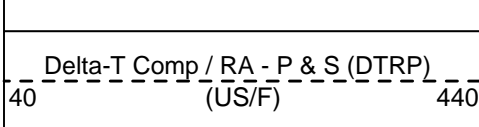
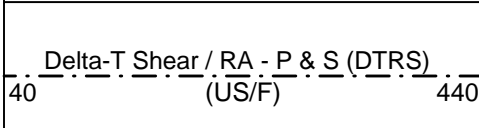
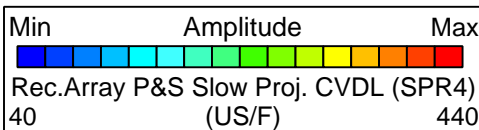
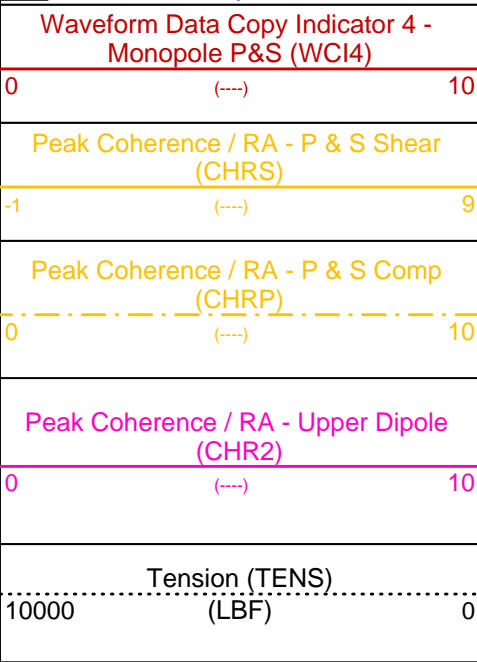
OP System Version: 12C0-301

MCM

MEST-B	12C0-301	DTA-A	12C0-301
DSST-B	12C0-301	SGT-N	12C0-301
DTC-H	12C0-301		

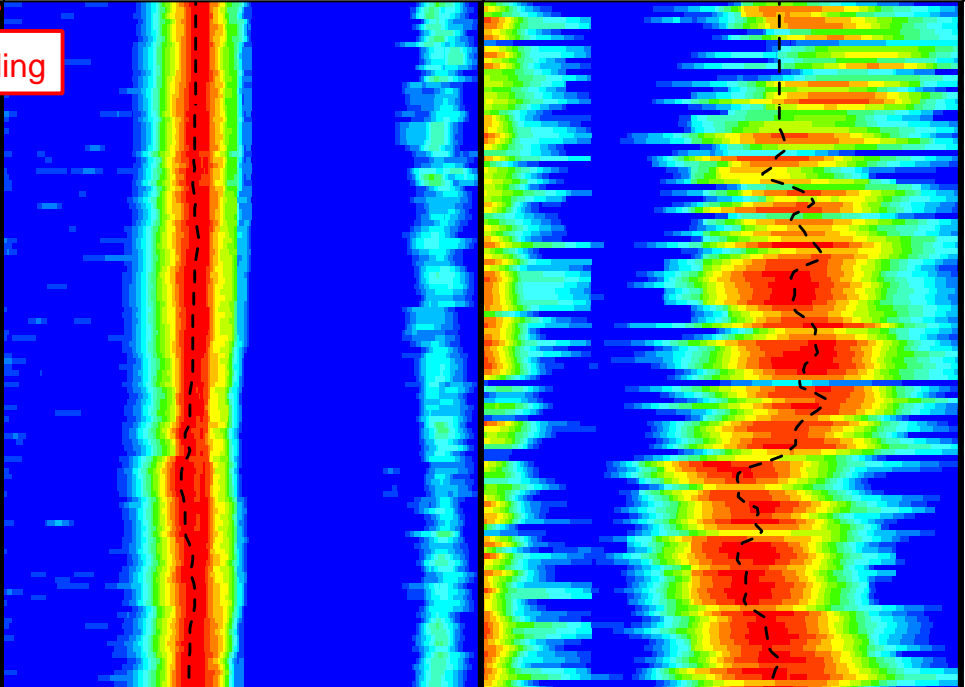
PIP SUMMARY

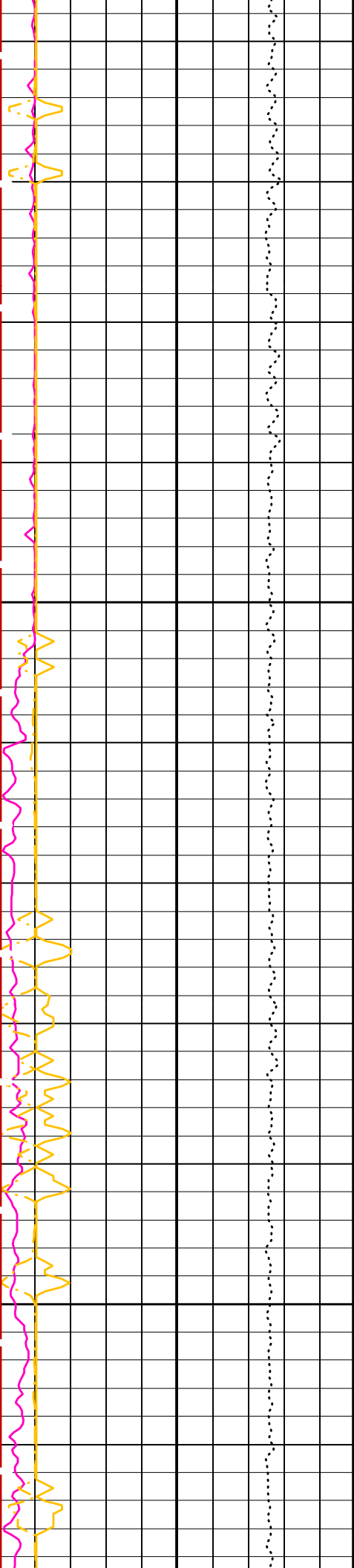
Time Mark Every 60 S



Last Reading

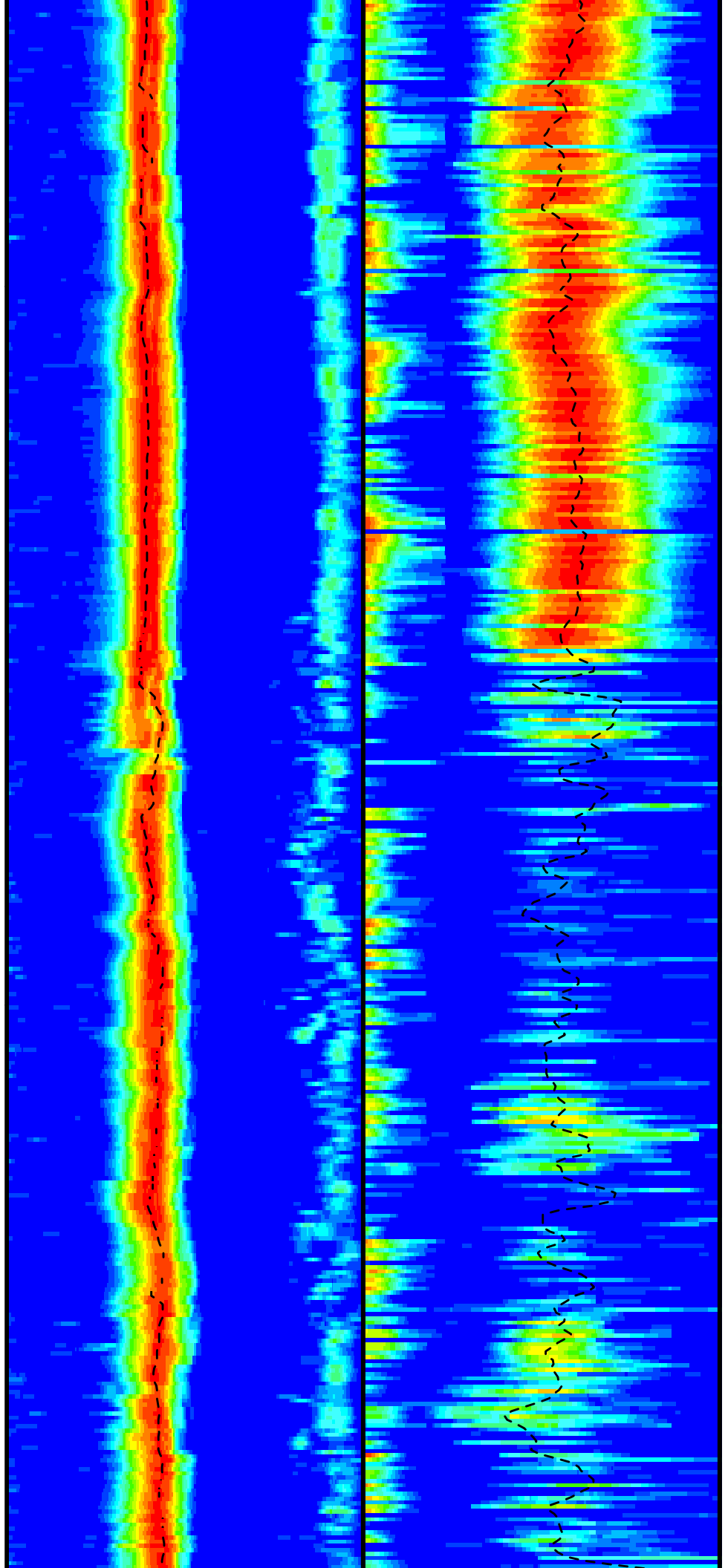
1050

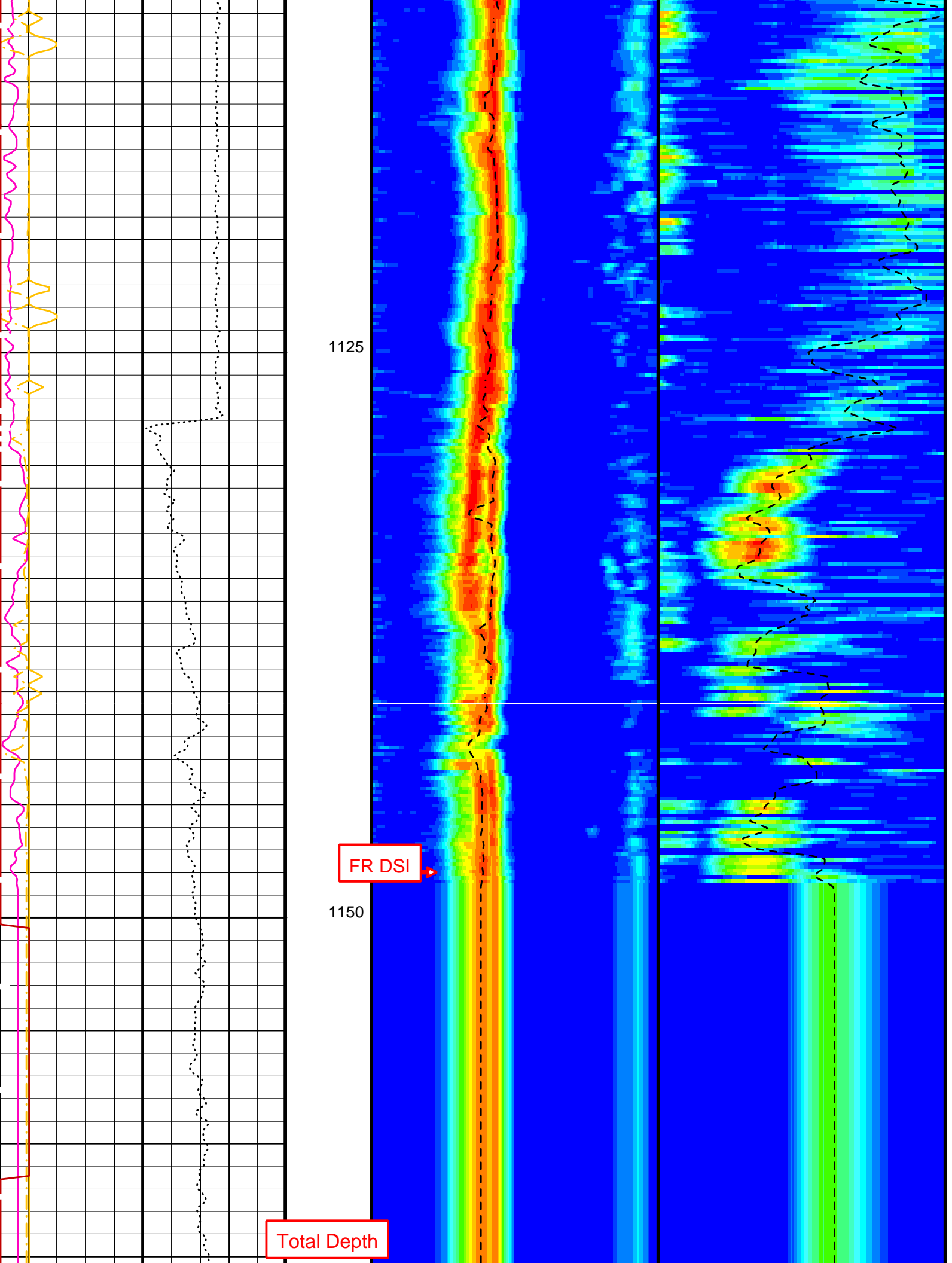




1075

1100



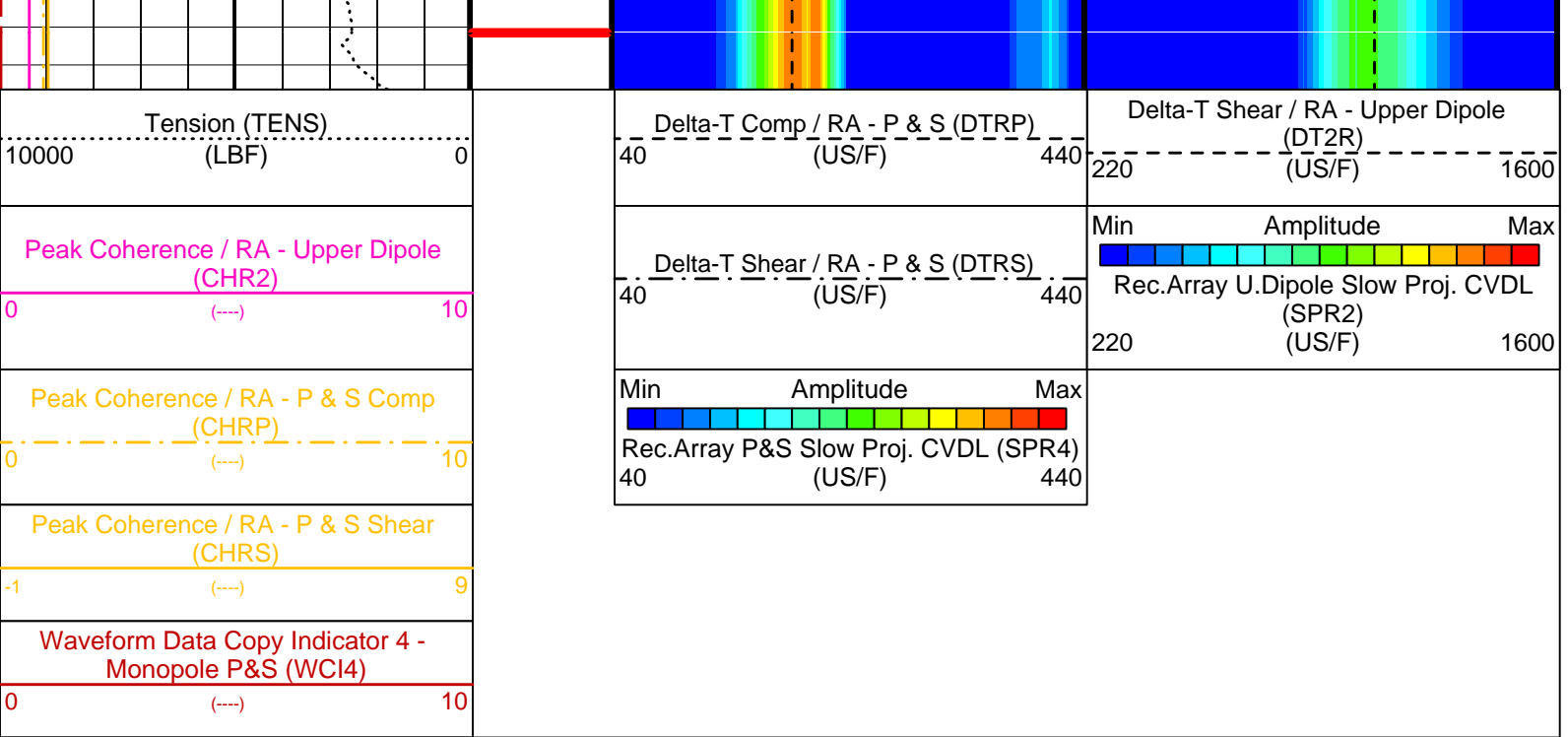


1125

1150

FR DSI

Total Depth



PIP SUMMARY

Time Mark Every 60 S

Parameters

DLIS Name	Description	Value
DSST-B: Dipole Shear Imager - B		
BHS	Borehole Status	OPEN
CASF	Label Casing Function - Monopole P&S	50
COLL	Label Slowness Lower Limit - Monopole P&S Compressional	40 US/F
COUL	Label Slowness Upper Limit - Monopole P&S Compressional	240 US/F
DDE2	Digitizing Delay 2	0 US
DDE4	Digitizing Delay 4	0 US
DDEX	Digitizing Delay X	0 US
DLCS	Label Compressional Source - Dipole Shear	USE
DSHL	Label Slowness Lower Limit - Dipole Shear	220 US/F
DSHU	Label Slowness Upper Limit - Dipole Shear	1600 US/F
DSI2	Digitizer Sample Interval 2	40 US
DSI4	Digitizer Sample Interval 4	10 US
DSIX	Digitizer Sample Interval X	40 US
DTCS	Compressional Delta-T Source for DTCO Channel	PS_COMP
DTF	Delta-T Fluid	189 US/F
DWC2	Digitizer Word Count 2	512
DWC4	Digitizer Word Count 4	512
DWCX	Digitizer Word Count X	512
FILG	Label Fill Gap Control - Monopole P&S	COMP_SHEAR
LFC	Label Formation Character - Monopole P&S	DYNAMIC
MCS	Mean Casing Slowness	57 US/F
MTXG	Monopole Transmitter Geometry	186 IN
NWI2	Number Waveform Items 2	8
NWI4	Number Waveform Items 4	8
NWIX	Number Waveform Items X	0
RSMN	Label Shear/Compressional Minimum Ratio - Monopole P&S	1.4
RSMX	Label Shear/Compressional Maximum Ratio - Monopole P&S	2.12
RX1G	Receiver 1 Geometry	294 IN
RX2G	Receiver 2 Geometry	300 IN
RX3G	Receiver 3 Geometry	306 IN
RX4G	Receiver 4 Geometry	312 IN
RX5G	Receiver 5 Geometry	318 IN
RX6G	Receiver 6 Geometry	324 IN
RX7G	Receiver 7 Geometry	330 IN
RX8G	Receiver 8 Geometry	336 IN
SAM2	DSST Sonic Acquisition Mode 2 - Upper Dipole Mode	LFD_ODD
SAM4	DSST Sonic Acquisition Mode 4 - High Frequency Monopole Mode for P&S	LFD_EVEN
SAMX	DSST Sonic Acquisition Mode X - Both Dipoles or Monopole Mode for Expert	OFF
SAS2	STC Sonic Array Status - Upper Dipole	255
SAS4	STC Sonic Array Status - Monopole P&S	255
SBO2	STC Search Band Offset - Upper Dipole	3000 US
SBO4	STC Search Band Offset - Monopole P&S	500 US
SBR4	STC Baseline Removal - Monopole P&S	ON

SBW2	STC Search Bandwidth - Upper Dipole	8000	US
SBW4	STC Search Bandwidth - Monopole P&S	2000	US
SFC2	STC Formation Character - Upper Dipole	SELECTABLE	
SFC4	STC Formation Character - Monopole P&S	SELECTABLE	
SFM2	STC Filter - Upper Dipole	B.3-1.5K	
SFM4	STC Filter - Monopole P&S	B3-12K	
SHLL	Label Slowness Lower Limit - Monopole P&S Shear	75	US/F
SHUL	Label Slowness Upper Limit - Monopole P&S Shear	240	US/F
SLL2	STC Slowness Lower Limit - Upper Dipole	220	US/F
SLL4	STC Slowness Lower Limit - Monopole P&S	40	US/F
SST2	STC Slowness Step - Upper Dipole	4	US/F
SST4	STC Slowness Step - Monopole P&S	2	US/F
SSW2	STC Source Waveform - Upper Dipole	WF_SAM2	
SSW4	STC Source Waveform - Monopole P&S	WF_SAM4	
STLL	Label Slowness Lower Limit - Monopole Stoneley	220	US/F
STUL	Label Slowness Upper Limit - Monopole Stoneley	1600	US/F
SUL2	STC Slowness Upper Limit - Upper Dipole	1600	US/F
SUL4	STC Slowness Upper Limit - Monopole P&S	440	US/F
SWD2	STC Slowness Width - Upper Dipole	40	US/F
SWD4	STC Slowness Width - Monopole P&S	10	US/F
TBF2	STC Time for Baseline Fill - Upper Dipole	0	US
TBF4	STC Time for Baseline Fill - Monopole P&S	300	US
TLL2	STC Time Lower Limit - Upper Dipole	1420	US
TLL4	STC Time Lower Limit - Monopole P&S	150	US
TST2	STC Time Step - Upper Dipole	200	US
TST4	STC Time Step - Monopole P&S	50	US
TUL2	STC Time Upper Limit - Upper Dipole	20440	US
TUL4	STC Time Upper Limit - Monopole P&S	5110	US
TWD2	STC Time Width - Upper Dipole	2000	US
TWD4	STC Time Width - Monopole P&S	1000	US
TWI2	STC Integration Time Window - Upper Dipole	1600	US
TWI4	STC Integration Time Window - Monopole P&S	500	US
TWSX	Transmitter Waveform Select X	0	
UTXG	Upper Dipole Transmitter Geometry	162	IN
WFM4	Waveform Mode 4	W1	
BHS	SGT-N: Scintillation Gamma-Ray - N Borehole Status	OPEN	
DO	System and Miscellaneous		
PP	Depth Offset for Playback	0.0	M
	Playback Processing	RECOMPUTE	

Format: DSST_P_S_UPPER_VDL_COLOR Vertical Scale: 1:200 Graphics File Created: 30-Sep-2005 22:13

OP System Version: 12C0-301			
MCM			
MEST-B	12C0-301	DTA-A	12C0-301
DSST-B	12C0-301	SGT-N	12C0-301
DTC-H	12C0-301		

Input DLIS Files						
DEFAULT	FMS_DSI_049LUP	FN:54	PRODUCER	30-Sep-2005 20:04	1167.7 M	1034.9 M
Output DLIS Files						
DEFAULT	FMS_DSI_055PUP	FN:62	PRODUCER	30-Sep-2005 22:13		

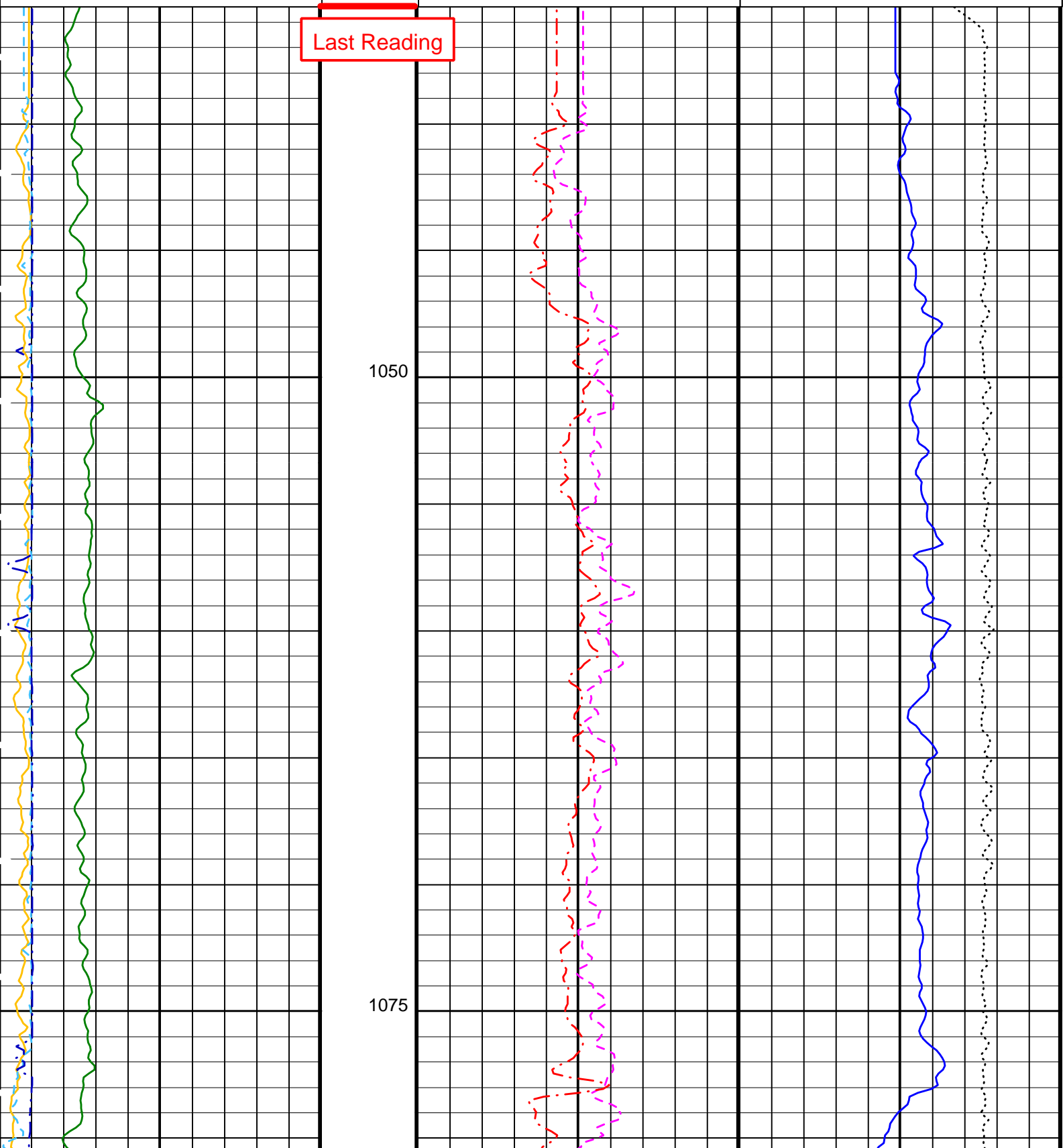
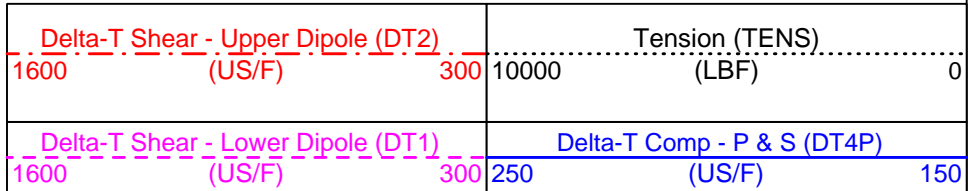
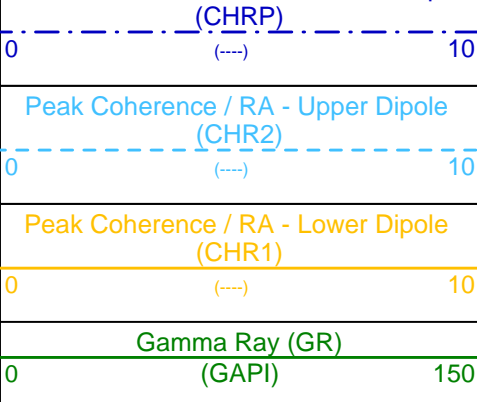
Input DLIS Files						
DEFAULT	FMS_DSI_049LUP	FN:54	PRODUCER	30-Sep-2005 20:04	1167.7 M	1034.9 M
Output DLIS Files						
DEFAULT	FMS_DSI_055PUP	FN:62	PRODUCER	30-Sep-2005 22:13	1167.7 M	1035.4 M

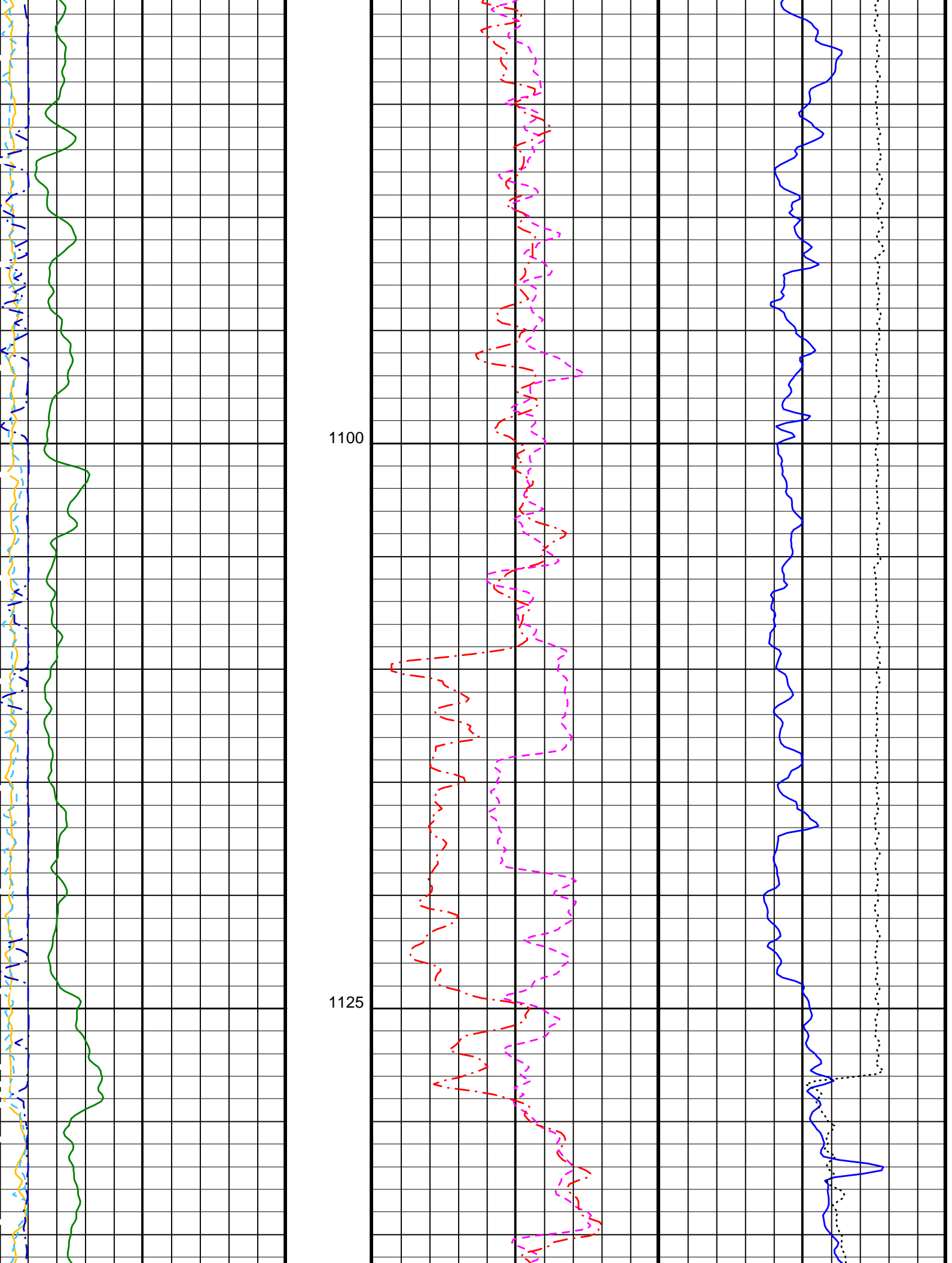
OP System Version: 12C0-301			
MCM			
MEST-B	12C0-301	DTA-A	12C0-301
DSST-B	12C0-301	SGT-N	12C0-301
DTC-H	12C0-301		

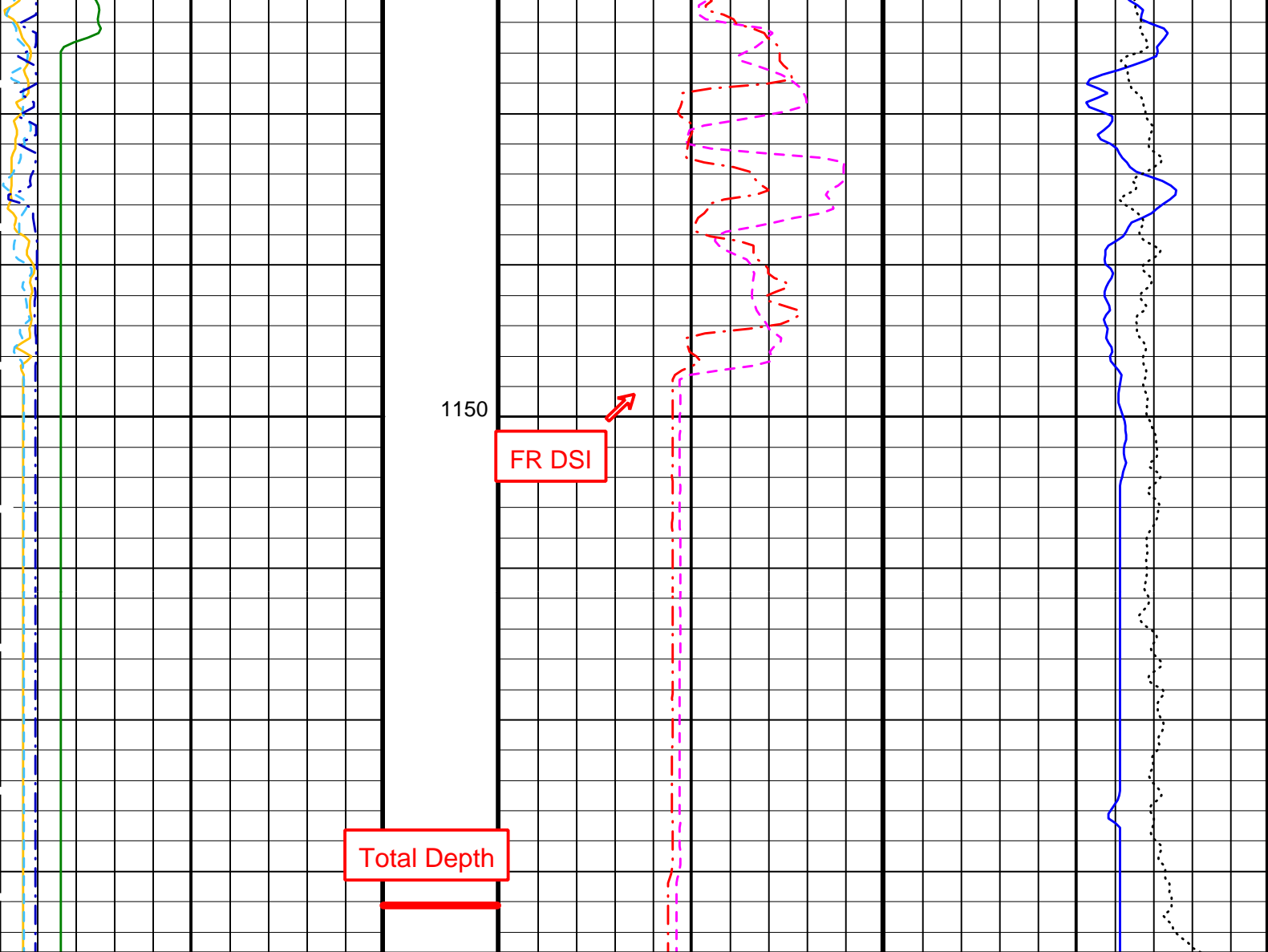
PIP SUMMARY

Time Mark Every 60 S

Peak Coherence / RA - P & S Comp







Gamma Ray (GR) (GAPI)	0	150	Delta-T Shear - Lower Dipole (DT1) (US/F)	1600	300	Delta-T Comp - P & S (DT4P) (US/F)	250	150
Peak Coherence / RA - Lower Dipole (CHR1)	0	10	Delta-T Shear - Upper Dipole (DT2) (US/F)	1600	300	Tension (TENS) (LBF)	10000	0
Peak Coherence / RA - Upper Dipole (CHR2)	0	10						
Peak Coherence / RA - P & S Comp (CHRP)	0	10						

PIP SUMMARY

Time Mark Every 60 S

Parameters

DLIS Name	Description	Value
DSST-B:	Dipole Shear Imager - B	
BHS	Borehole Status	OPEN
CASF	Label Casing Function - Monopole P&S	50
COLL	Label Slowness Lower Limit - Monopole P&S Compressional	40 US/F
COUL	Label Slowness Upper Limit - Monopole P&S Compressional	240 US/F
DLCS	Label Compressional Source - Dipole Shear	USE
DSHL	Label Slowness Lower Limit - Dipole Shear	220 US/F
DSHU	Label Slowness Upper Limit - Dipole Shear	1600 US/F
DTCS	Compressional Delta-T Source for DTCS Channel	PS_COMP
DTF	Delta-T Fluid	189 US/F
FILL	Label Fill Gap Control - Monopole P&S	COMP_SHEAR

FILEG	Label Fill Gap Control - Monopole P&S	COMP_SHEAR	
LFC	Label Formation Character - Monopole P&S	DYNAMIC	
LTXG	Lower Dipole Transmitter Geometry	156	IN
MCS	Mean Casing Slowness	57	US/F
MTXG	Monopole Transmitter Geometry	186	IN
NWI1	Number Waveform Items 1	8	
NWI2	Number Waveform Items 2	8	
NWI4	Number Waveform Items 4	8	
NWIX	Number Waveform Items X	0	
RSMN	Label Shear/Compressional Minimum Ratio - Monopole P&S	1.4	
RSMX	Label Shear/Compressional Maximum Ratio - Monopole P&S	2.12	
RX1G	Receiver 1 Geometry	294	IN
RX2G	Receiver 2 Geometry	300	IN
RX3G	Receiver 3 Geometry	306	IN
RX4G	Receiver 4 Geometry	312	IN
RX5G	Receiver 5 Geometry	318	IN
RX6G	Receiver 6 Geometry	324	IN
RX7G	Receiver 7 Geometry	330	IN
RX8G	Receiver 8 Geometry	336	IN
SAS1	STC Sonic Array Status - Lower Dipole	255	
SAS2	STC Sonic Array Status - Upper Dipole	255	
SAS4	STC Sonic Array Status - Monopole P&S	255	
SFM1	STC Filter - Lower Dipole	B1-3K	
SFM2	STC Filter - Upper Dipole	B.3-1.5K	
SHLL	Label Slowness Lower Limit - Monopole P&S Shear	75	US/F
SHUL	Label Slowness Upper Limit - Monopole P&S Shear	240	US/F
SSW1	STC Source Waveform - Lower Dipole	WF_SAM1	
SSW2	STC Source Waveform - Upper Dipole	WF_SAM2	
SSW4	STC Source Waveform - Monopole P&S	WF_SAM4	
STLL	Label Slowness Lower Limit - Monopole Stoneley	220	US/F
STUL	Label Slowness Upper Limit - Monopole Stoneley	1600	US/F
TWI1	STC Integration Time Window - Lower Dipole	1600	US
TWI2	STC Integration Time Window - Upper Dipole	1600	US
TWI4	STC Integration Time Window - Monopole P&S	500	US
UTXG	Upper Dipole Transmitter Geometry	162	IN
BHS	SGT-N: Scintillation Gamma-Ray - N Borehole Status	OPEN	
DO	System and Miscellaneous Depth Offset for Playback	0.0	M
PP	Playback Processing	RECOMPUTE	

Format: DSI_Field_Print Vertical Scale: 1:200 Graphics File Created: 30-Sep-2005 22:13

OP System Version: 12C0-301

MCM

MEST-B	12C0-301	DTA-A	12C0-301
DSST-B	12C0-301	SGT-N	12C0-301
DTC-H	12C0-301		

Input DLIS Files

DEFAULT	FMS_DSI_049LUP	FN:54	PRODUCER	30-Sep-2005 20:04	1167.7 M	1034.9 M
---------	----------------	-------	----------	-------------------	----------	----------

Output DLIS Files

DEFAULT	FMS_DSI_055PUP	FN:62	PRODUCER	30-Sep-2005 22:13
---------	----------------	-------	----------	-------------------



Calibrations

MAXIS Field Log

Calibration and Check Summary

Measurement	Nominal	Master	Before	After	Change	Limit	Units
-------------	---------	--------	--------	-------	--------	-------	-------

Micro Electrical Scanner - B (Slim) Wellsite Calibration - Caliper Calibration

Before: 20-Sep-2005 16:51

Caliper 1 Zero Measurement	8.000	N/A	8.742	N/A	N/A	N/A	IN
Caliper 2 Zero Measurement	8.000	N/A	8.725	N/A	N/A	N/A	IN
Caliper 1 Plus Measurement	12.00	N/A	12.77	N/A	N/A	N/A	IN
Caliper 2 Plus Measurement	12.00	N/A	12.78	N/A	N/A	N/A	IN

Micro Electrical Scanner - B (Slim) Wellsite Calibration - CROUZET ACCELEROMETER PROM HAS BEEN READ CORRECTLY

Before: 20-Sep-2005 16:54

TEMPERATURE REFERENCE :	N/A	N/A	20	N/A	N/A	N/A	DEGC
YEAR OF CALIBRATION :	N/A	N/A	99	N/A	N/A	N/A	
MONTH OF CALIBRATION :	N/A	N/A	3	N/A	N/A	N/A	
SERIAL NUMBER :	N/A	N/A	743	N/A	N/A	N/A	

Micro Electrical Scanner - B (Slim) Wellsite Calibration - CROUZET MAGNETOMETER PROM HAS BEEN READ CORRECTLY

Before: 20-Sep-2005 16:54

TEMPERATURE REFERENCE :	N/A	N/A	25	N/A	N/A	N/A	DEGC
YEAR OF CALIBRATION :	N/A	N/A	91	N/A	N/A	N/A	
MONTH OF CALIBRATION :	N/A	N/A	5	N/A	N/A	N/A	
SERIAL NUMBER :	N/A	N/A	98	N/A	N/A	N/A	

Scintillation Gamma-Ray - N Wellsite Calibration - Detector Calibration

Before: 21-Sep-2005 10:13

Gamma Ray (Jig - Bkg)	158.5	N/A	158.5	N/A	N/A	14.41	GAPI
Gamma Ray (Calibrated)	165.0	N/A	165.0	N/A	N/A	15.00	GAPI

Micro Electrical Scanner - B (Slim) / Equipment Identification

Primary Equipment:

MEST Sonde - B	MEDS - B	771
MEST Preamplifier Cartridge - AB	MEPC - AB	807
GPIT Cartridge - A	GPIC - A	840
MEST Acquisition Cartridge - A	MEAC - A	804

Auxiliary Equipment:

MEST-B Preamplifier Cartridge Housing	MEPH - A	702
MEST Acquisition Cartridge Housing (Slim)	MEAH - B	701

Scintillation Gamma-Ray - N / Equipment Identification

Primary Equipment:

Scintillation Gamma Cartridge	SGC - TB	9585
Scintillation Gamma Detector	SGD - TAA	

Auxiliary Equipment:

Scintillation Gamma Housing	SGH - K	2450
Gamma Source Radioactive	GSR - U/Y	166

Scintillation Gamma-Ray - N Wellsite Calibration

Detector Calibration

Phase	Gamma Ray Background GAPI	Value	Phase	Gamma Ray (Jig - Bkg) GAPI	Value	Phase	Gamma Ray (Calibrated) GAPI	Value
Before		3.498	Before		158.5	Before		165.0
	0 (Minimum) 30.00 (Nominal) 120.0 (Maximum)			144.1 (Minimum) 158.5 (Nominal) 173.0 (Maximum)			150.0 (Minimum) 165.0 (Nominal) 180.0 (Maximum)	

Before: 21-Sep-2005 10:13

Company: Lamont Doherty

Schlumberger

Well: IODP EXP 311 Site U1329D

Field: CAS-05D

Country: Canada

Ocean: Pacific

Formation Micro_Scanner