



**DISCLAIMER**

THE USE OF AND RELIANCE UPON THIS RECORDED-DATA BY THE HEREIN NAMED COMPANY (AND ANY OF ITS AFFILIATES, PARTNERS, REPRESENTATIVES, AGENTS, CONSULTANTS AND EMPLOYEES) IS SUBJECT TO THE TERMS AND CONDITIONS AGREED UPON BETWEEN SCHLUMBERGER AND THE COMPANY, INCLUDING: (a) RESTRICTIONS ON USE OF THE RECORDED-DATA; (b) DISCLAIMERS AND WAIVERS OF WARRANTIES AND REPRESENTATIONS REGARDING COMPANY'S USE OF AND RELIANCE UPON THE RECORDED-DATA; AND (c) CUSTOMER'S FULL AND SOLE RESPONSIBILITY FOR ANY INFERENCE DRAWN OR DECISION MADE IN CONNECTION WITH THE USE OF THIS RECORDED-DATA.




OTHER SERVICES1 OS1: MEST OS2: OS3: OS4: OS5:	OTHER SERVICES2 OS1: OS2: OS3: OS4: OS5:
--	---

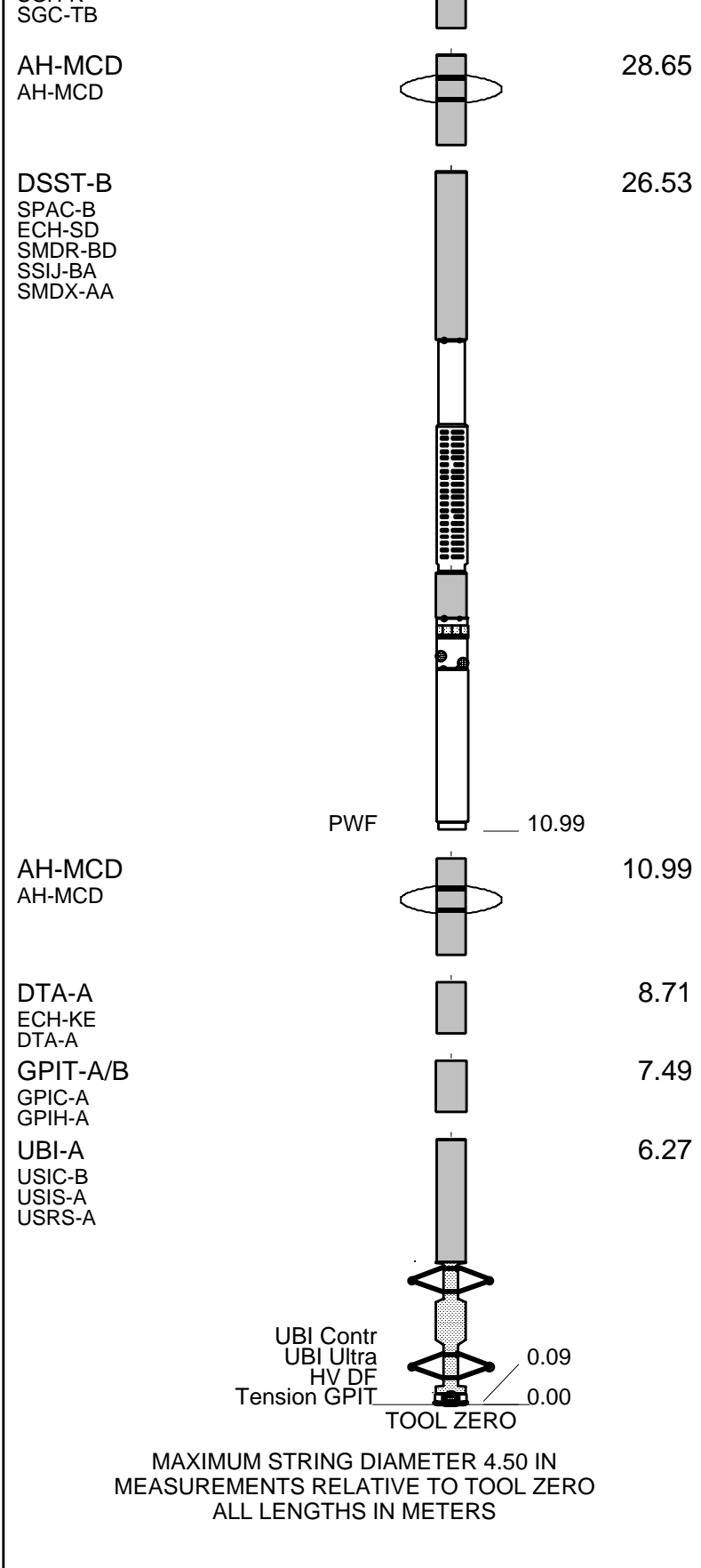
REMARKS: RUN NUMBER 1 All parameters and presentations as per IODP standards Tool ran as per tool sketch below. Casing and sea floor depth information provided by IODP TD not reached due to hole conditions Hole top section logged in ODPLeg 206 and IODP Exp 309. Caliper closed and compensator turned off when logging head was 10m. below drill pipe	REMARKS: RUN NUMBER 2
---	-----------------------

RUN 1			RUN 2		
SERVICE ORDER #:			SERVICE ORDER #:		
PROGRAM VERSION:	12C0-301		PROGRAM VERSION:		
FLUID LEVEL:			FLUID LEVEL:		
LOGGED INTERVAL	START	STOP	LOGGED INTERVAL	START	STOP

**EQUIPMENT DESCRIPTION**

RUN 1		RUN 2	
<b>SURFACE EQUIPMENT</b>			
GSR-U/Y WITM (DTS)-A			

<b>DOWNHOLE EQUIPMENT</b>			
LEH-MT			32.21
LEH-MT			
DTC-H	CTEM		30.97
ECH-KC	TelStatus		31.25
	ToolStatu		30.33
SGT-N	Gamma Ray		30.05
SGH-K			30.33



Production String	(in)	(m)	Well Schematic	(m)	(in)	Casing String
	OD	ID		MD	OD	

Kelly Bushing Elevation  
Derrick Floor Elevation

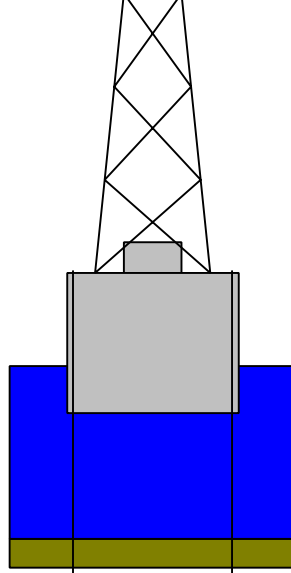
11.3  
11.0

11.0 5.500

Casing String

Mean Sea Level

0.0



3645.0 9.875  
3934.0 5.500

Borehole Segment  
Casing Shoe

**Schlumberger**

FIRST PASS

MAXIS Field Log

**Input DLIS Files**

DEFAULT	UBI_DSI_070LUP	FN:79	PRODUCER	22-Dec-2005 08:44	5075.1 M	4713.7 M
---------	----------------	-------	----------	-------------------	----------	----------

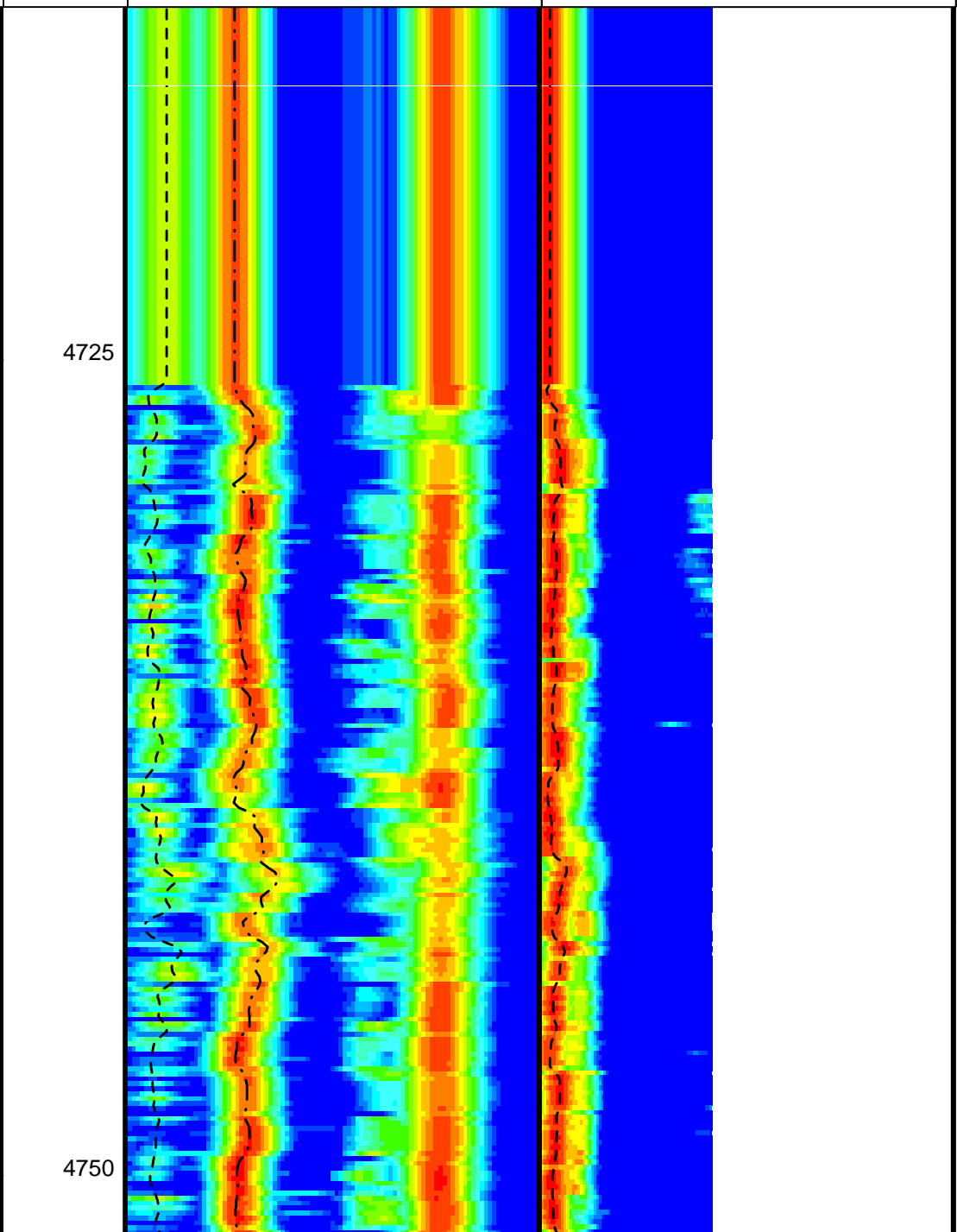
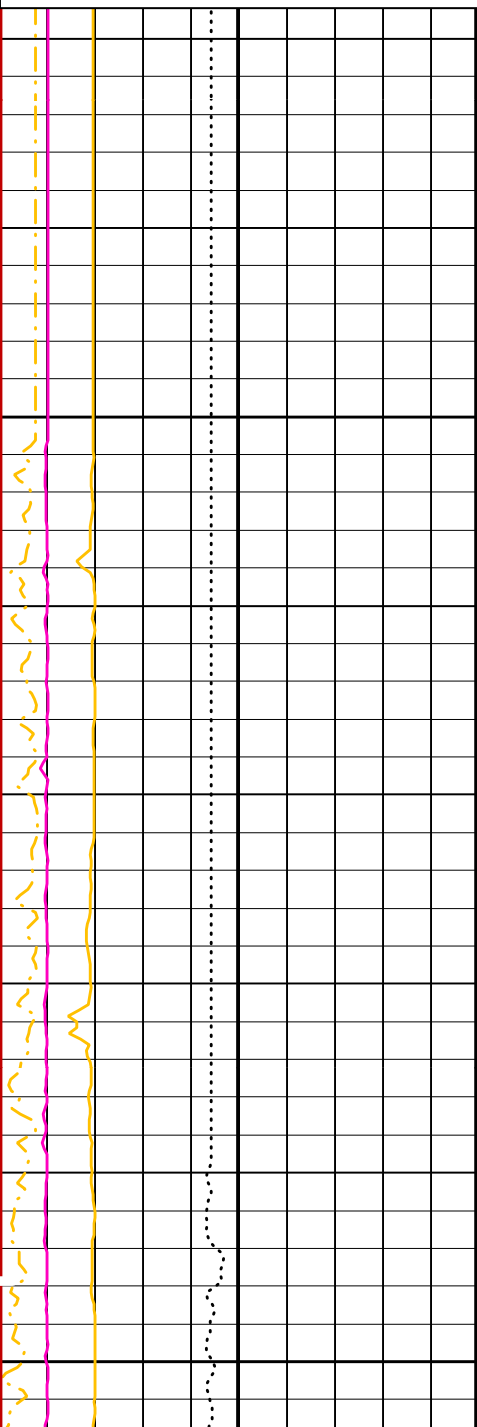
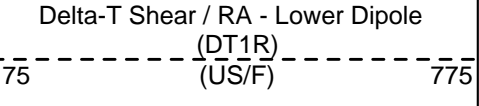
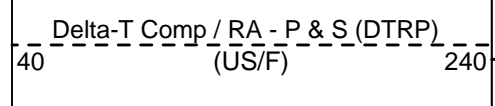
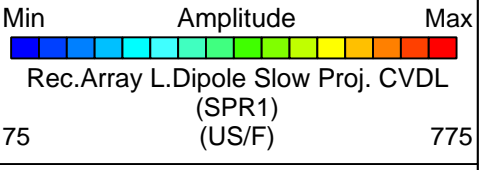
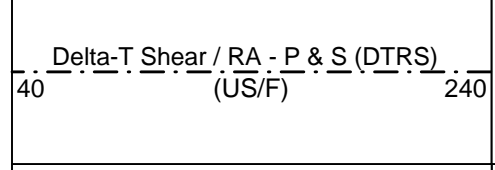
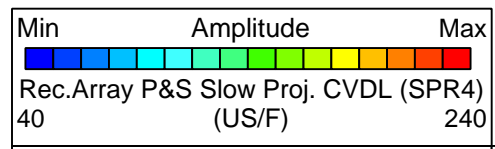
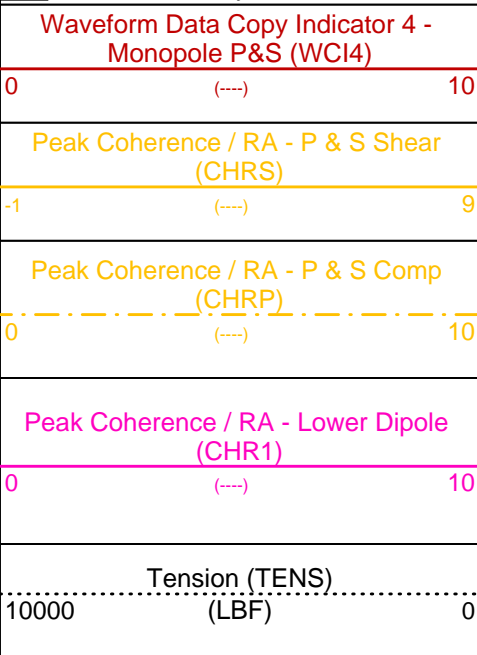
**Output DLIS Files**

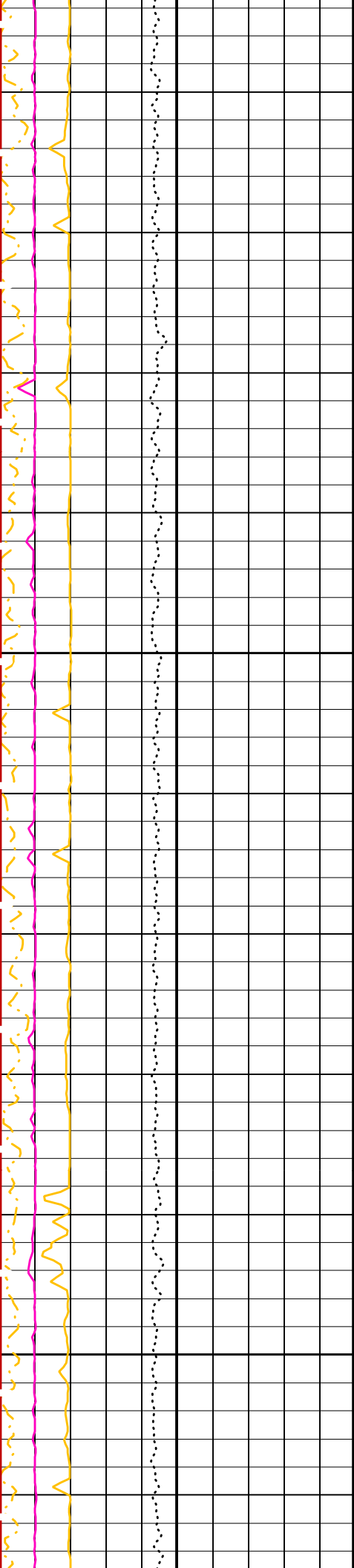
DEFAULT	UBI_DSI_103PUP	FN:117	PRODUCER	24-Dec-2005 12:29	5075.1 M	4714.2 M
REDUCED	UBI_DSI_103PUP	FN:118	PRODUCER	24-Dec-2005 12:29	5075.1 M	4714.2 M

**OP System Version: 12C0-301**  
MCM

UBI-A	12C0-301	GPIT-A/B	12C0-301
DTA-A	12C0-301	DSST-B	12C0-301
SGT-N	12C0-301	DTC-H	12C0-301

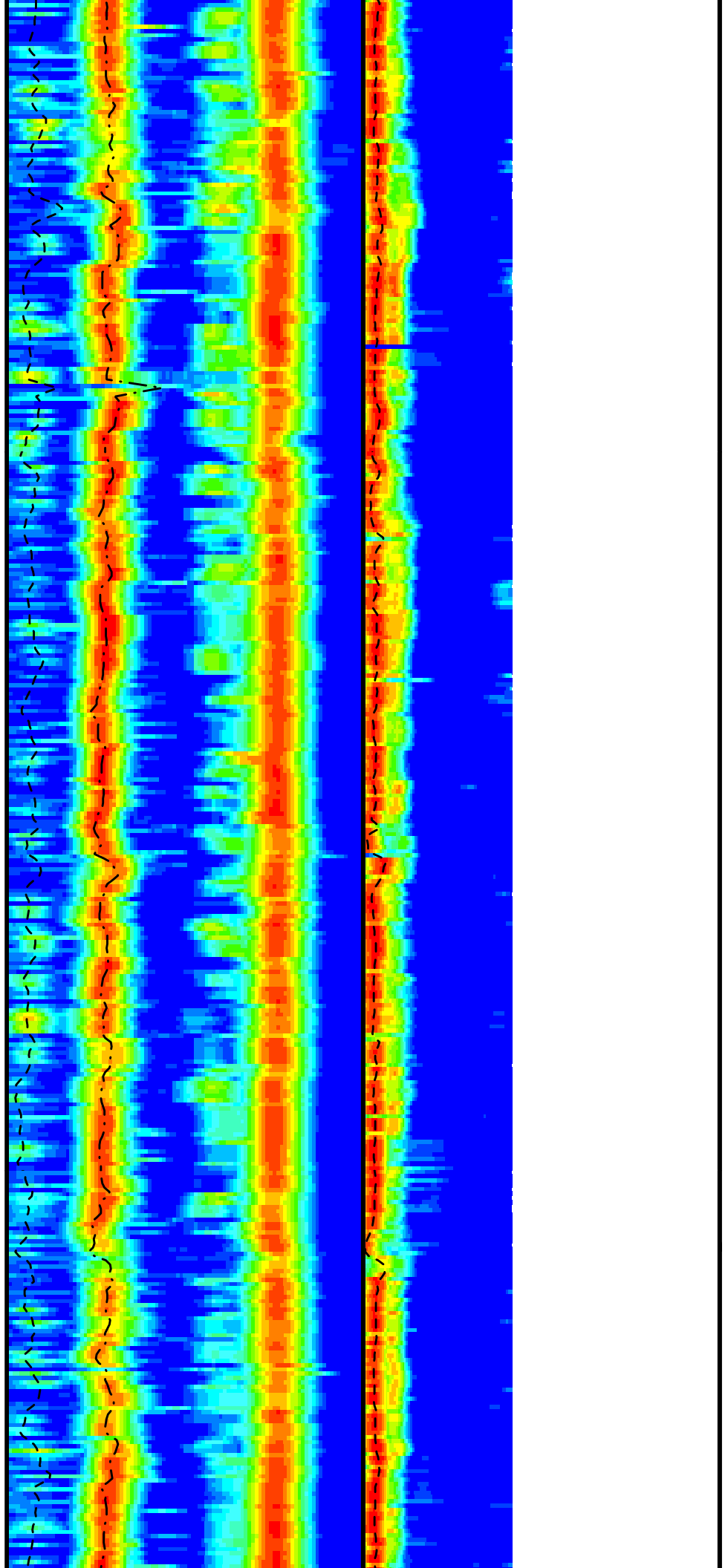
PIP SUMMARY

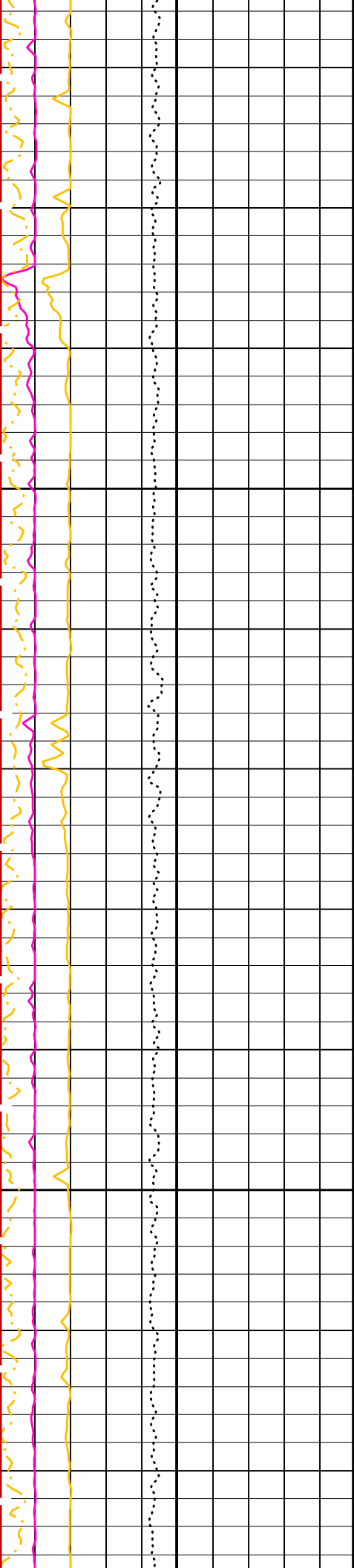




4775

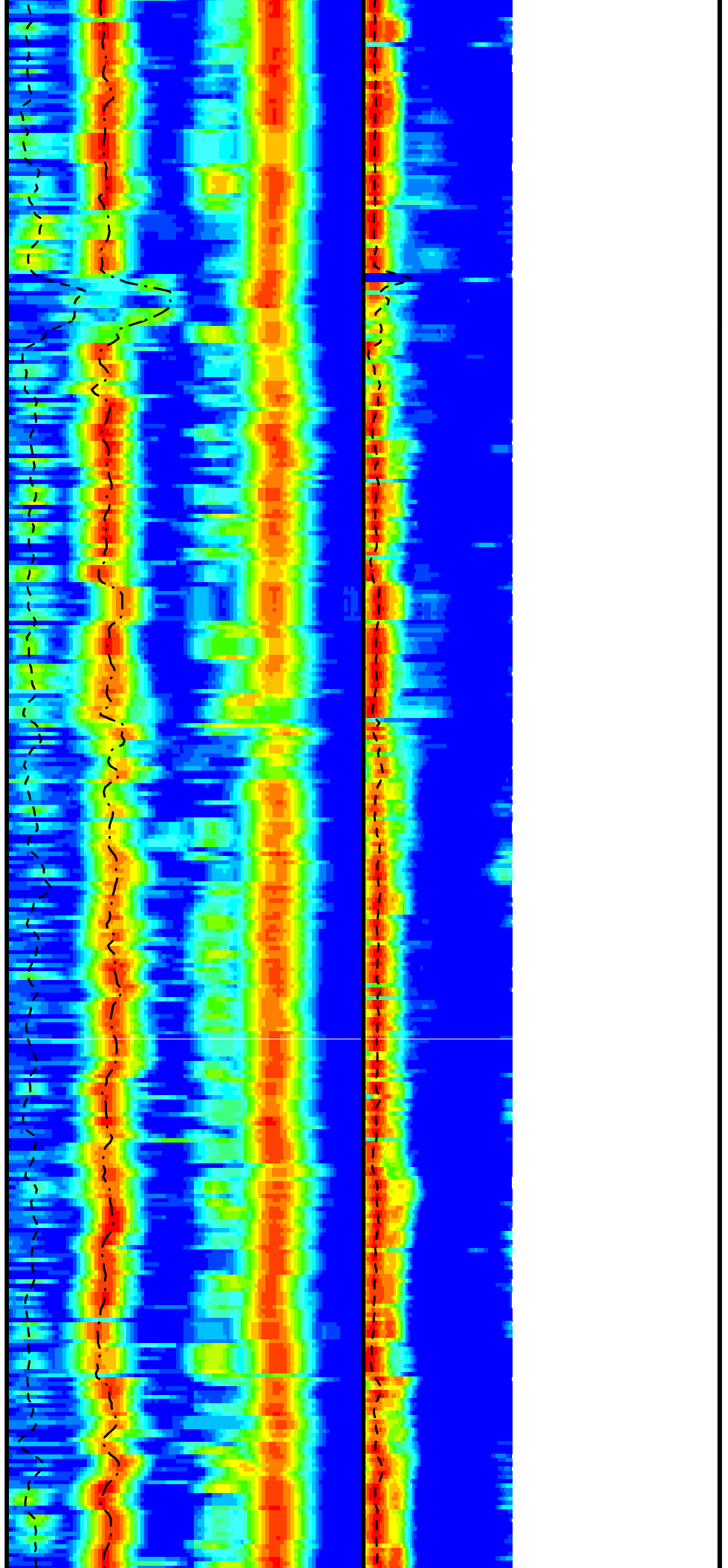
4800



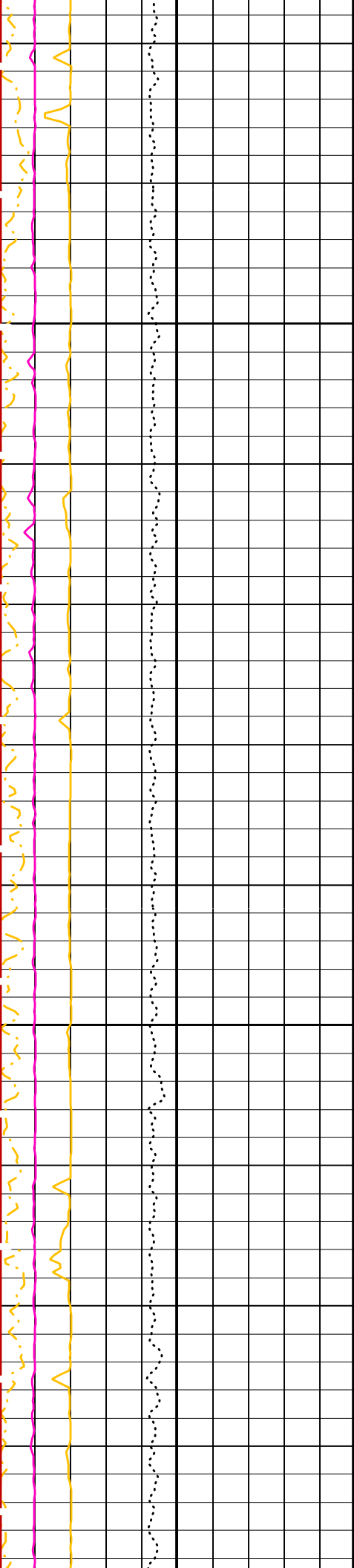


4825

4850

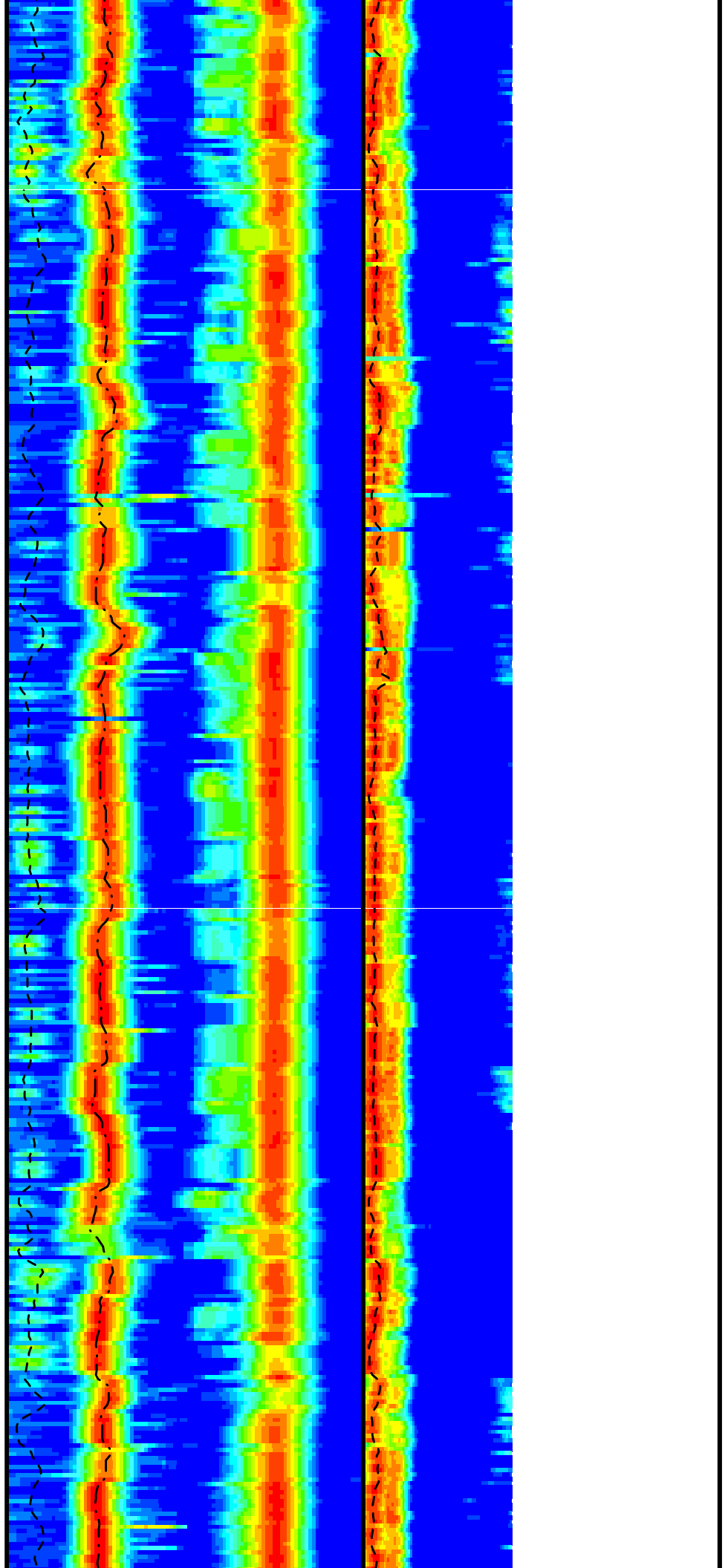


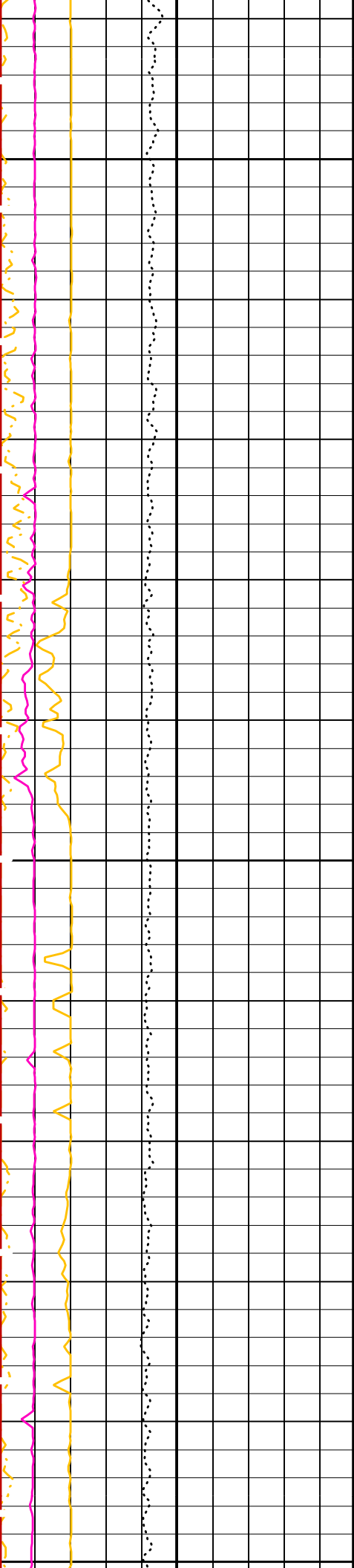




4875

4900

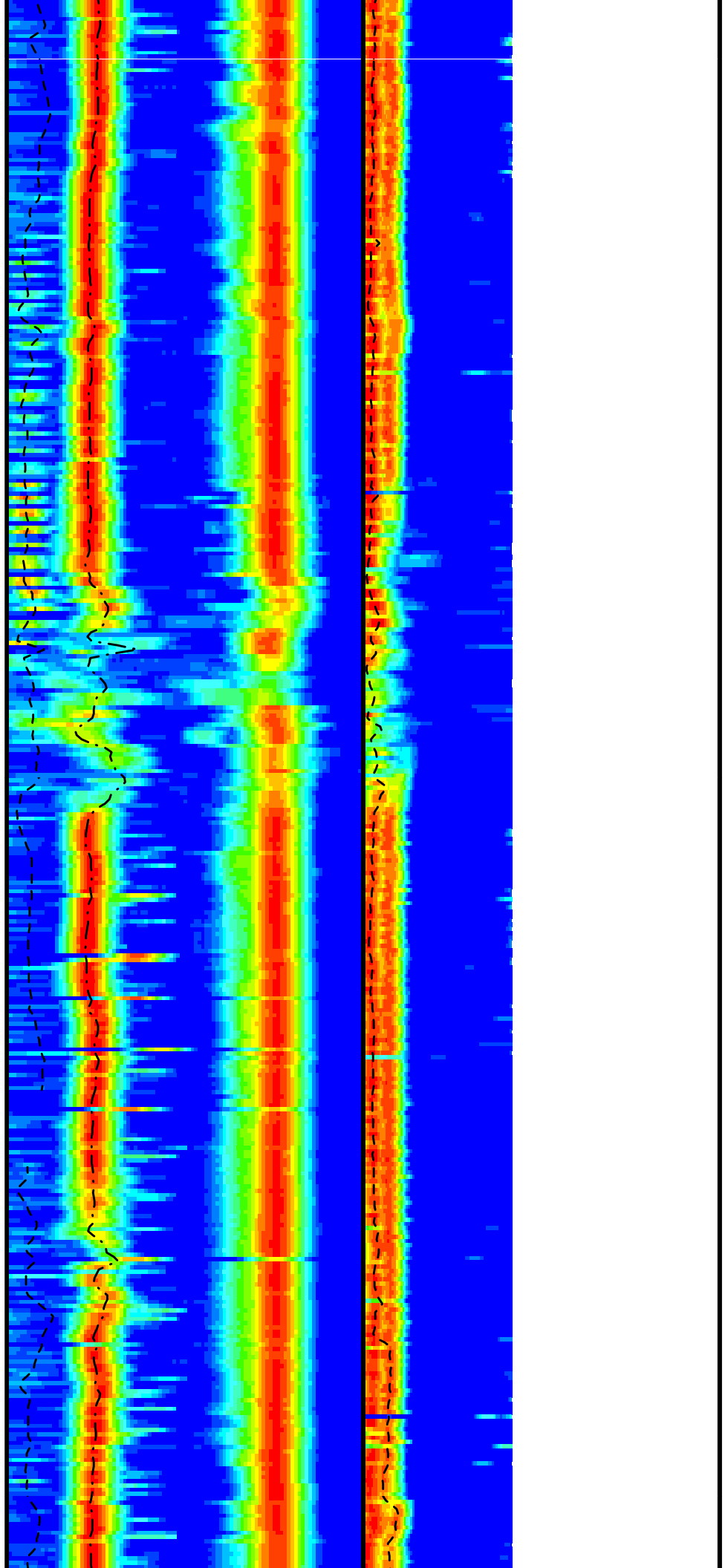


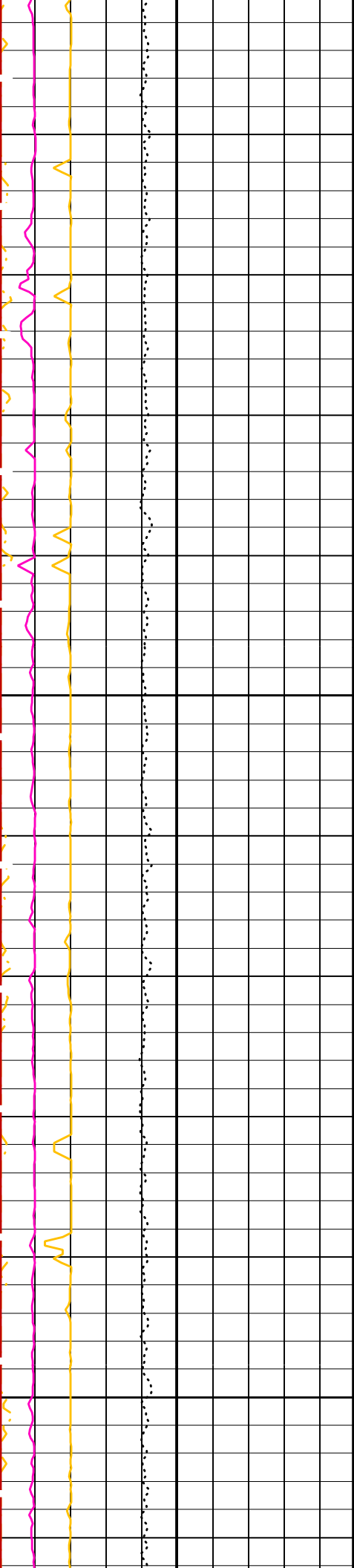


4925

4950

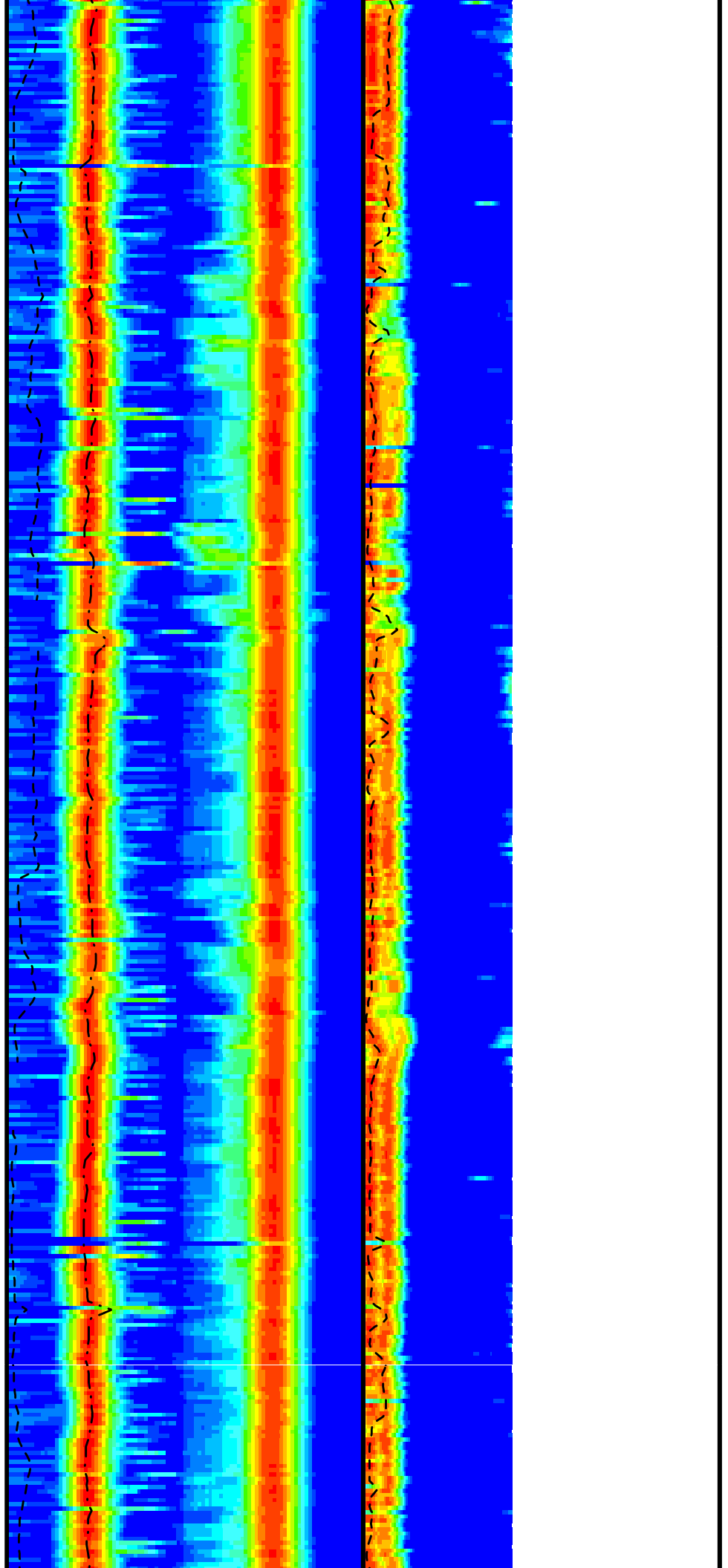
4975

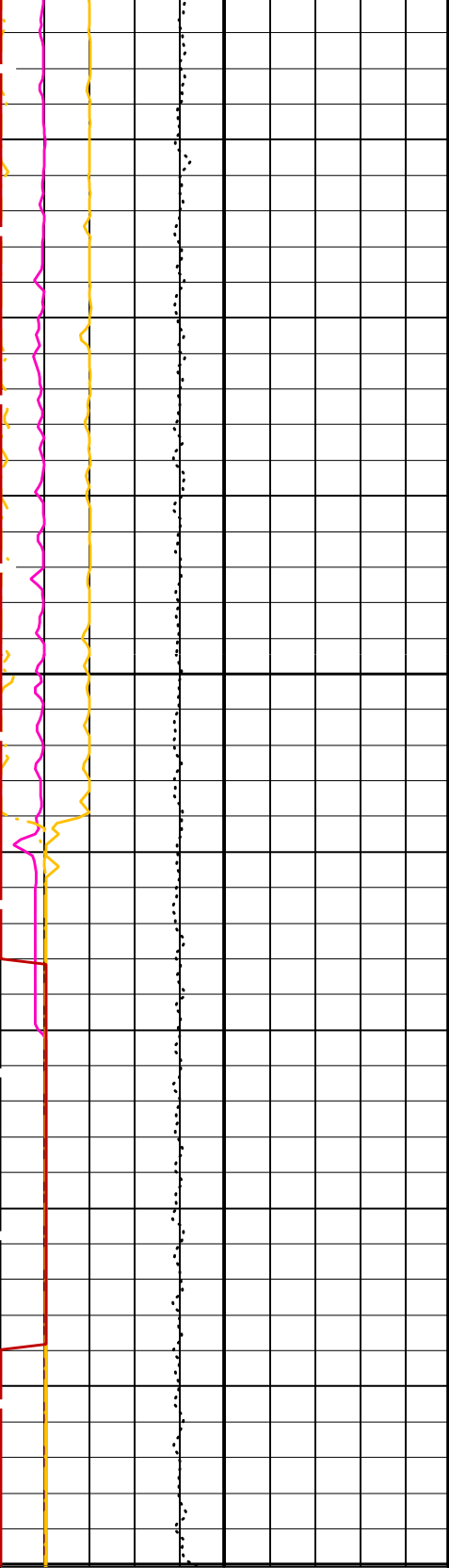




5000

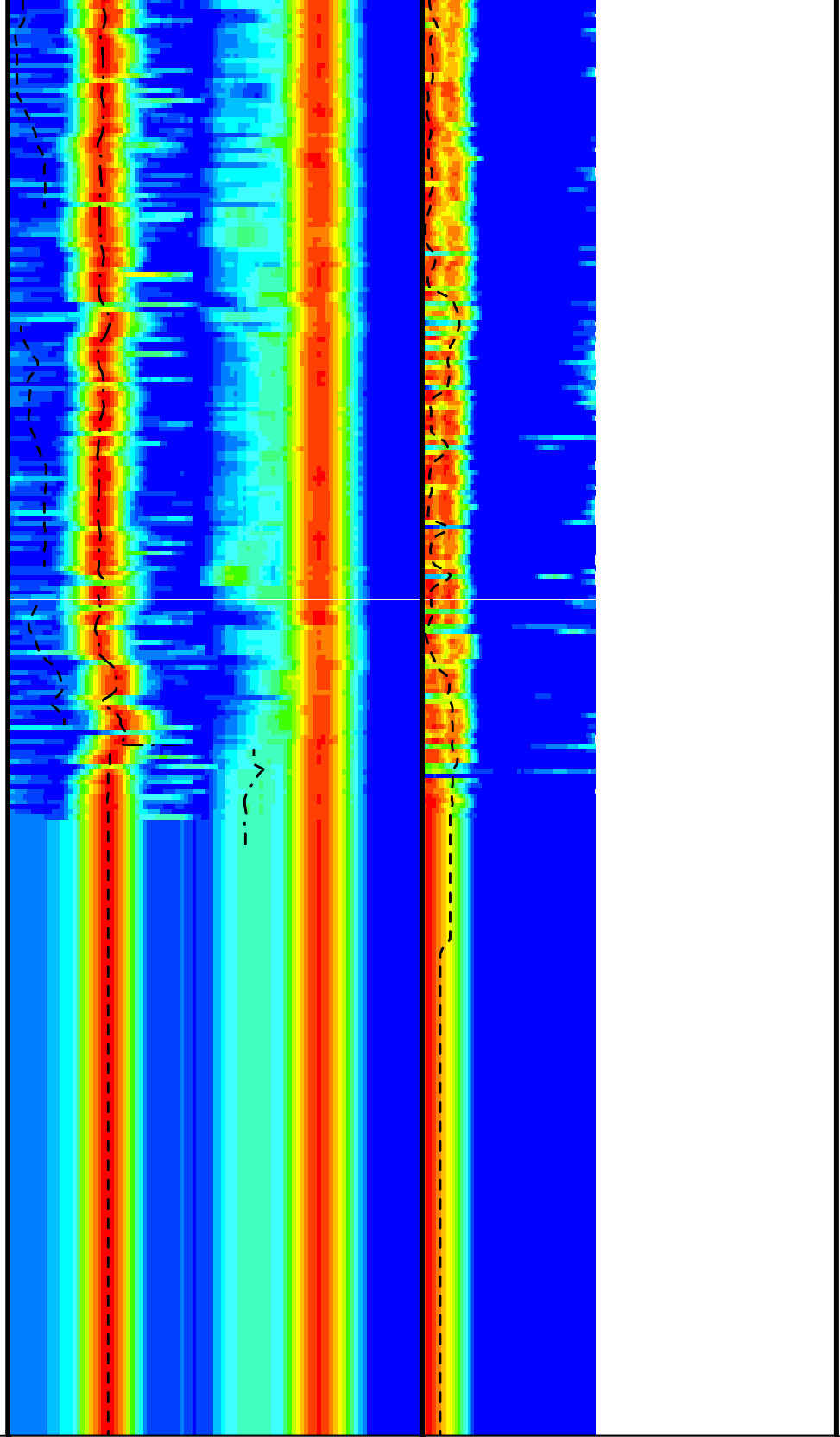
5025





5050

5075



Tension (TENS)  
10000 (LBF) 0

Peak Coherence / RA - Lower Dipole (CHR1)  
0 (---) 10

Peak Coherence / RA - P & S Comp (CHRP)  
0 (---) 10

Peak Coherence / RA - P & S Shear

Delta-T Comp / RA - P & S (DTRP)  
40 (US/F) 240

Delta-T Shear / RA - P & S (DTRS)  
40 (US/F) 240

Min Amplitude Max  
Rec.Array P&S Slow Proj. CVDL (SPR4)  
40 (US/F) 240

Delta-T Shear / RA - Lower Dipole (DT1R)  
75 (US/F) 775

Min Amplitude Max  
Rec.Array L.Dipole Slow Proj. CVDL (SPR1)  
75 (US/F) 775

## PIP SUMMARY

Time Mark Every 60 S

## Parameters

DLIS Name	Description	Value
	DSST-B: Dipole Shear Imager - B	
BHS	Borehole Status	OPEN
CASF	Label Casing Function - Monopole P&S	50
COLL	Label Slowness Lower Limit - Monopole P&S Compressional	40 US/F
COUL	Label Slowness Upper Limit - Monopole P&S Compressional	90 US/F
DDE1	Digitizing Delay 1	0 US
DDE4	Digitizing Delay 4	0 US
DDEX	Digitizing Delay X	0 US
DLSH	Label Compressional Source - Dipole Shear	USE
DLSC	Label Slowness Lower Limit - Dipole Shear	70 US/F
DSHU	Label Slowness Upper Limit - Dipole Shear	360 US/F
DSI1	Digitizer Sample Interval 1	40 US
DSI4	Digitizer Sample Interval 4	10 US
DSIX	Digitizer Sample Interval X	40 US
DTCS	Compressional Delta-T Source for DTCO Channel	PS_COMP
DTF	Delta-T Fluid	189 US/F
DWC1	Digitizer Word Count 1	512
DWC4	Digitizer Word Count 4	512
DWCX	Digitizer Word Count X	512
FILG	Label Fill Gap Control - Monopole P&S	COMP
LFC	Label Formation Character - Monopole P&S	DYNAMIC
LTXG	Lower Dipole Transmitter Geometry	156 IN
MCS	Mean Casing Slowness	57 US/F
MTXG	Monopole Transmitter Geometry	186 IN
NWI1	Number Waveform Items 1	8
NWI4	Number Waveform Items 4	8
NWIX	Number Waveform Items X	0
RSMN	Label Shear/Compressional Minimum Ratio - Monopole P&S	1.4
RSMX	Label Shear/Compressional Maximum Ratio - Monopole P&S	2.12
RX1G	Receiver 1 Geometry	294 IN
RX2G	Receiver 2 Geometry	300 IN
RX3G	Receiver 3 Geometry	306 IN
RX4G	Receiver 4 Geometry	312 IN
RX5G	Receiver 5 Geometry	318 IN
RX6G	Receiver 6 Geometry	324 IN
RX7G	Receiver 7 Geometry	330 IN
RX8G	Receiver 8 Geometry	336 IN
SAM1	DSST Sonic Acquisition Mode 1 - Lower Dipole Mode	EVEN
SAM4	DSST Sonic Acquisition Mode 4 - High Frequency Monopole Mode for P&S	MFD_EVEN
SAMX	DSST Sonic Acquisition Mode X - Both Dipoles or Monopole Mode for Expert	OFF
SAS1	STC Sonic Array Status - Lower Dipole	255
SAS4	STC Sonic Array Status - Monopole P&S	255
SBO1	STC Search Band Offset - Lower Dipole	3000 US
SBO4	STC Search Band Offset - Monopole P&S	500 US
SBR4	STC Baseline Removal - Monopole P&S	ON
SBW1	STC Search Bandwidth - Lower Dipole	8000 US
SBW4	STC Search Bandwidth - Monopole P&S	2000 US
SFC1	STC Formation Character - Lower Dipole	SELECTABLE
SFC4	STC Formation Character - Monopole P&S	SELECTABLE
SFM1	STC Filter - Lower Dipole	B1-5K
SFM4	STC Filter - Monopole P&S	B3-12K
SHLL	Label Slowness Lower Limit - Monopole P&S Shear	75 US/F
SHUL	Label Slowness Upper Limit - Monopole P&S Shear	174 US/F
SLL1	STC Slowness Lower Limit - Lower Dipole	60 US/F
SLL4	STC Slowness Lower Limit - Monopole P&S	40 US/F
SST1	STC Slowness Step - Lower Dipole	4 US/F
SST4	STC Slowness Step - Monopole P&S	2 US/F
SSW1	STC Source Waveform - Lower Dipole	WF_SAM1
SSW4	STC Source Waveform - Monopole P&S	WF_SAM4
STLL	Label Slowness Lower Limit - Monopole Stoneley	180 US/F
STUL	Label Slowness Upper Limit - Monopole Stoneley	780 US/F
SUL1	STC Slowness Upper Limit - Lower Dipole	360 US/F
SUL4	STC Slowness Upper Limit - Monopole P&S	240 US/F
SWD1	STC Slowness Width - Lower Dipole	40 US/F
SWD4	STC Slowness Width - Monopole P&S	10 US/F
TPE1	STC Time for Baseline Fill - Lower Dipole	0 US

TBF1	STC Time for Baseline Fill - Lower Dipole	0	US
TBF4	STC Time for Baseline Fill - Monopole P&S	300	US
TLL1	STC Time Lower Limit - Lower Dipole	600	US
TLL4	STC Time Lower Limit - Monopole P&S	150	US
TST1	STC Time Step - Lower Dipole	200	US
TST4	STC Time Step - Monopole P&S	50	US
TUL1	STC Time Upper Limit - Lower Dipole	11140	US
TUL4	STC Time Upper Limit - Monopole P&S	3660	US
TWD1	STC Time Width - Lower Dipole	2000	US
TWD4	STC Time Width - Monopole P&S	1000	US
TWI1	STC Integration Time Window - Lower Dipole	1600	US
TWI4	STC Integration Time Window - Monopole P&S	500	US
TWSX	Transmitter Waveform Select X	0	
WFM4	Waveform Mode 4	W1	
BHS	SGT-N: Scintillation Gamma-Ray - N Borehole Status	OPEN	
DO	System and Miscellaneous Depth Offset for Playback	0.0	M
PP	Playback Processing	RECOMPUTE	

Format: DSST\_P\_S\_LOWER\_VDL\_COLOR    Vertical Scale: 1:200    Graphics File Created: 24-Dec-2005 12:29

### OP System Version: 12C0-301

MCM

UBI-A	12C0-301	GPIT-A/B	12C0-301
DTA-A	12C0-301	DSST-B	12C0-301
SGT-N	12C0-301	DTC-H	12C0-301

### Input DLIS Files

DEFAULT	UBI_DSI_070LUP	FN:79	PRODUCER	22-Dec-2005 08:44	5075.1 M	4713.7 M
---------	----------------	-------	----------	-------------------	----------	----------

### Output DLIS Files

DEFAULT	UBI_DSI_103PUP	FN:117	PRODUCER	24-Dec-2005 12:29		
REDUCED	UBI_DSI_103PUP	FN:118	PRODUCER	24-Dec-2005 12:29		

## SECOND PASS

MAXIS Field Log

### Input DLIS Files

DEFAULT	UBI_DSI_072LUP	FN:83	PRODUCER	22-Dec-2005 10:53	5078.1 M	4704.9 M
---------	----------------	-------	----------	-------------------	----------	----------

### Output DLIS Files

DEFAULT	UBI_DSI_106PUP	FN:123	PRODUCER	24-Dec-2005 12:39	5078.1 M	4705.4 M
REDUCED	UBI_DSI_106PUP	FN:124	PRODUCER	24-Dec-2005 12:39	5078.1 M	4705.4 M

### OP System Version: 12C0-301

MCM

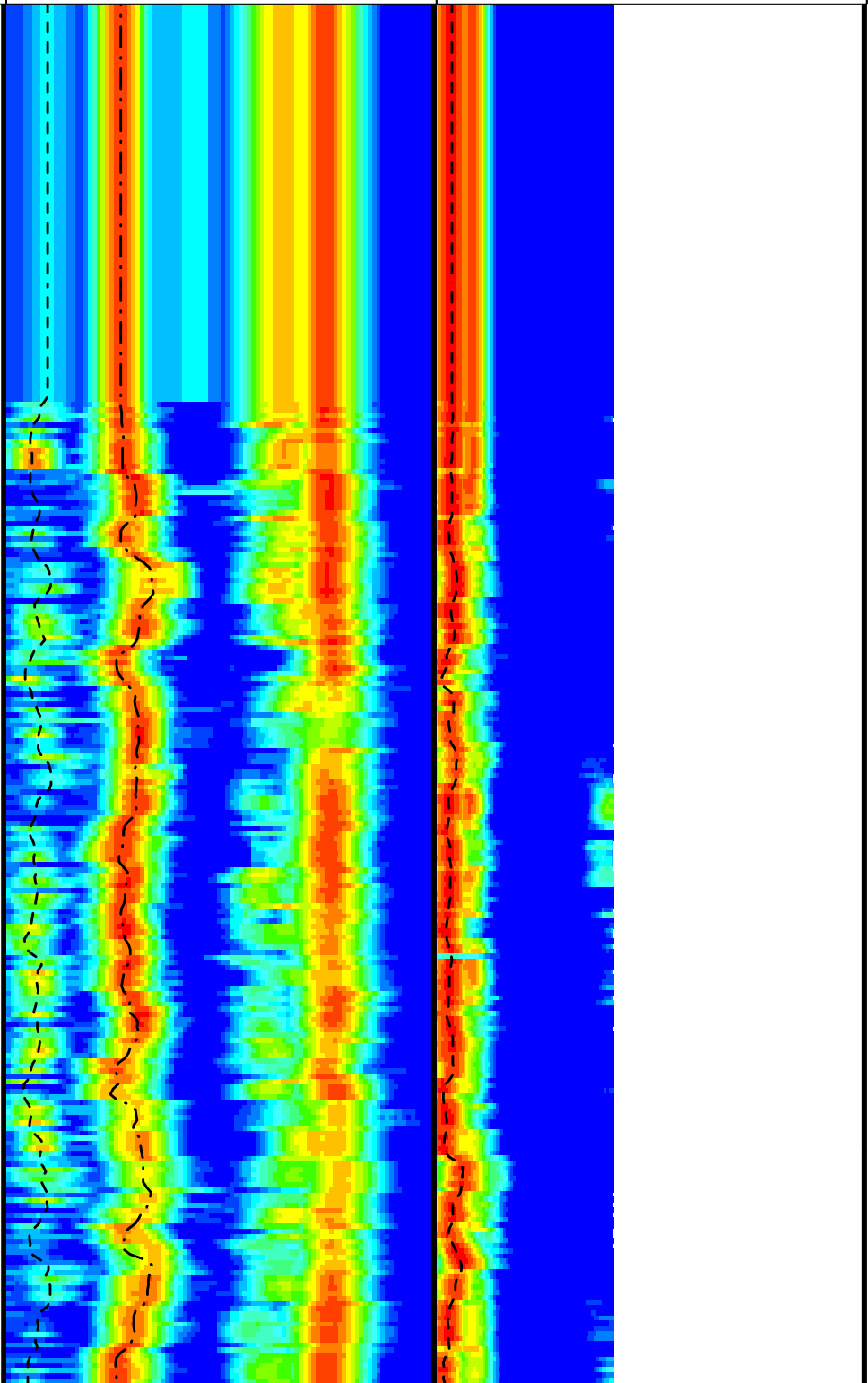
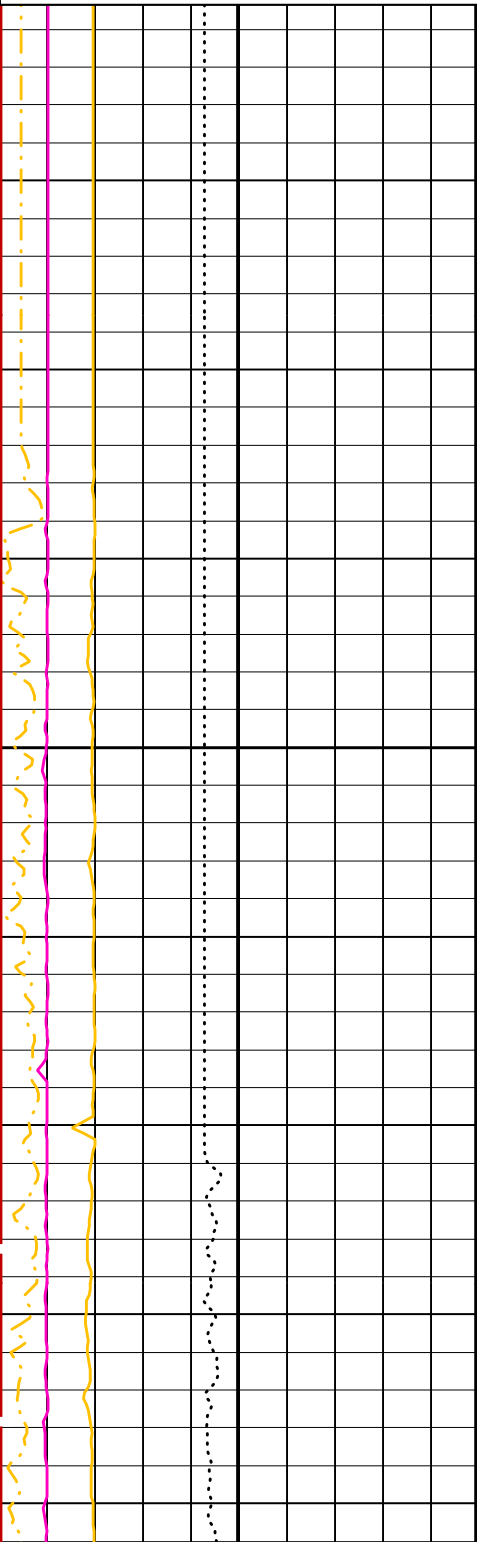
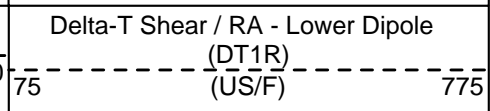
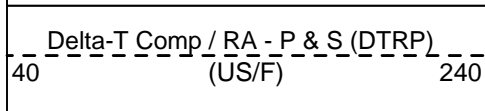
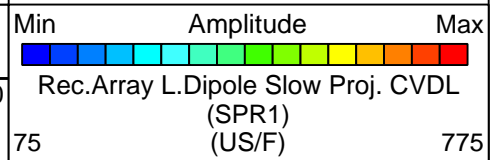
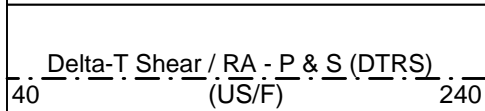
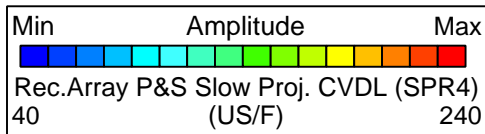
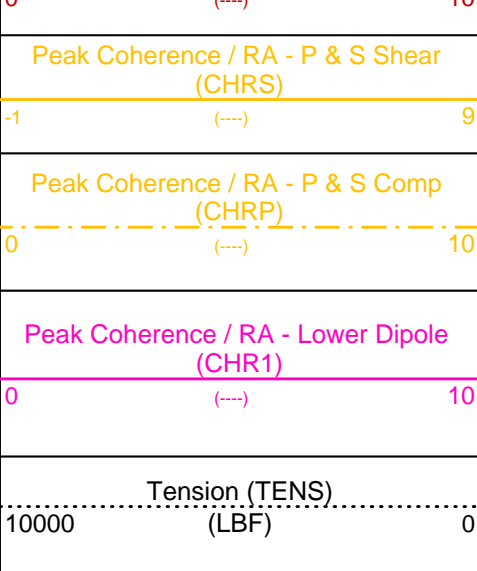
UBI-A	12C0-301	GPIT-A/B	12C0-301
DTA-A	12C0-301	DSST-B	12C0-301
SGT-N	12C0-301	DTC-H	12C0-301

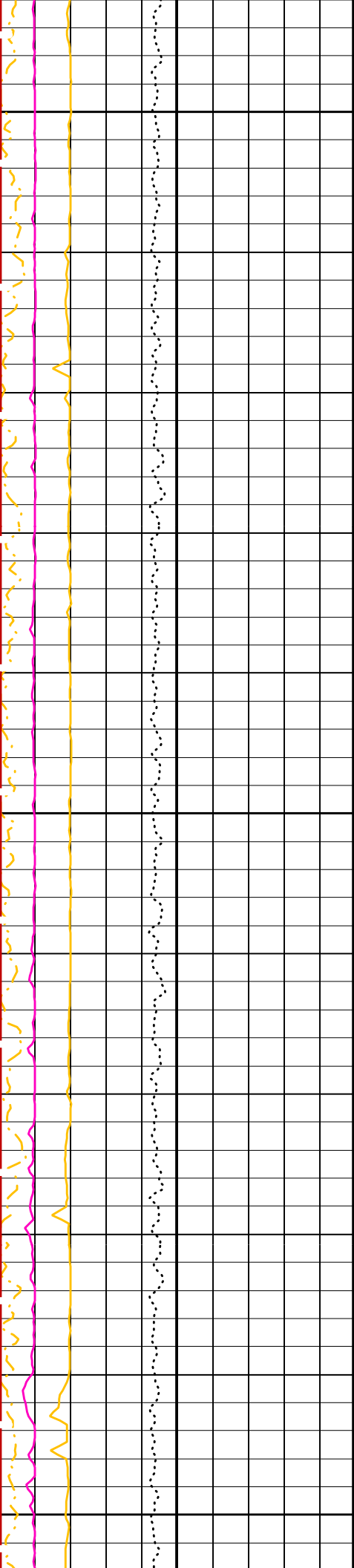
PIP SUMMARY

Time Mark Every 60 S

Waveform Data Copy Indicator 4 -  
Monopole P&S (WCI4)

0 ( ) 10

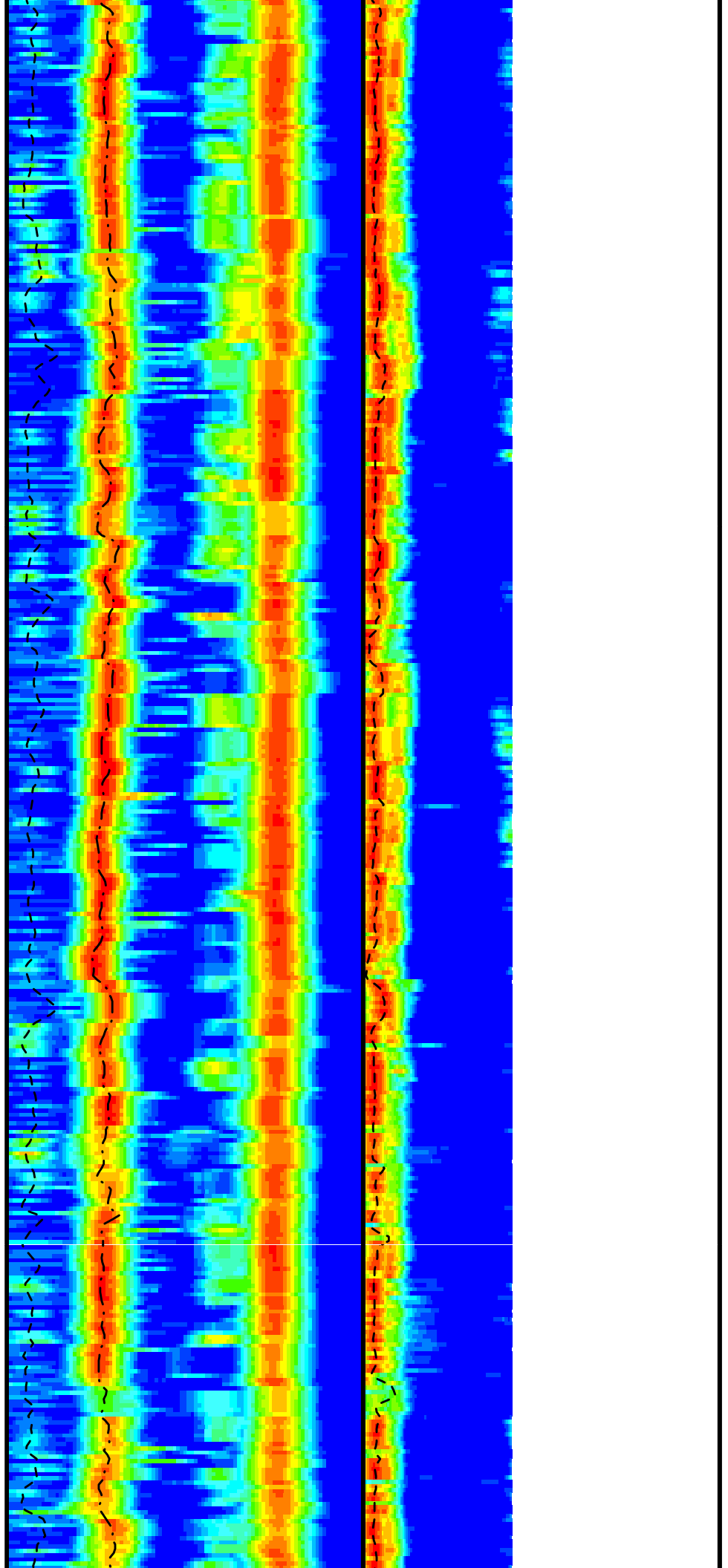




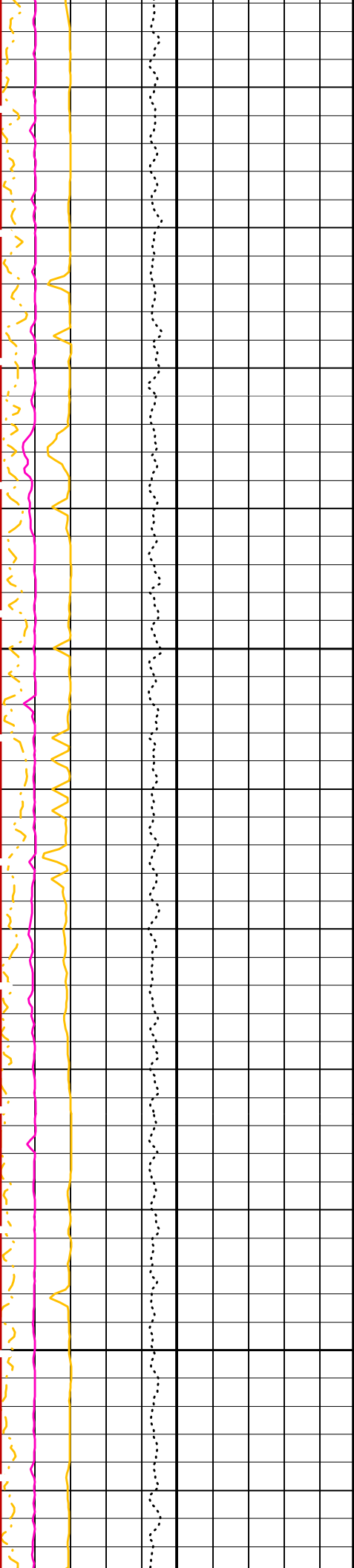
4750

4775

4800

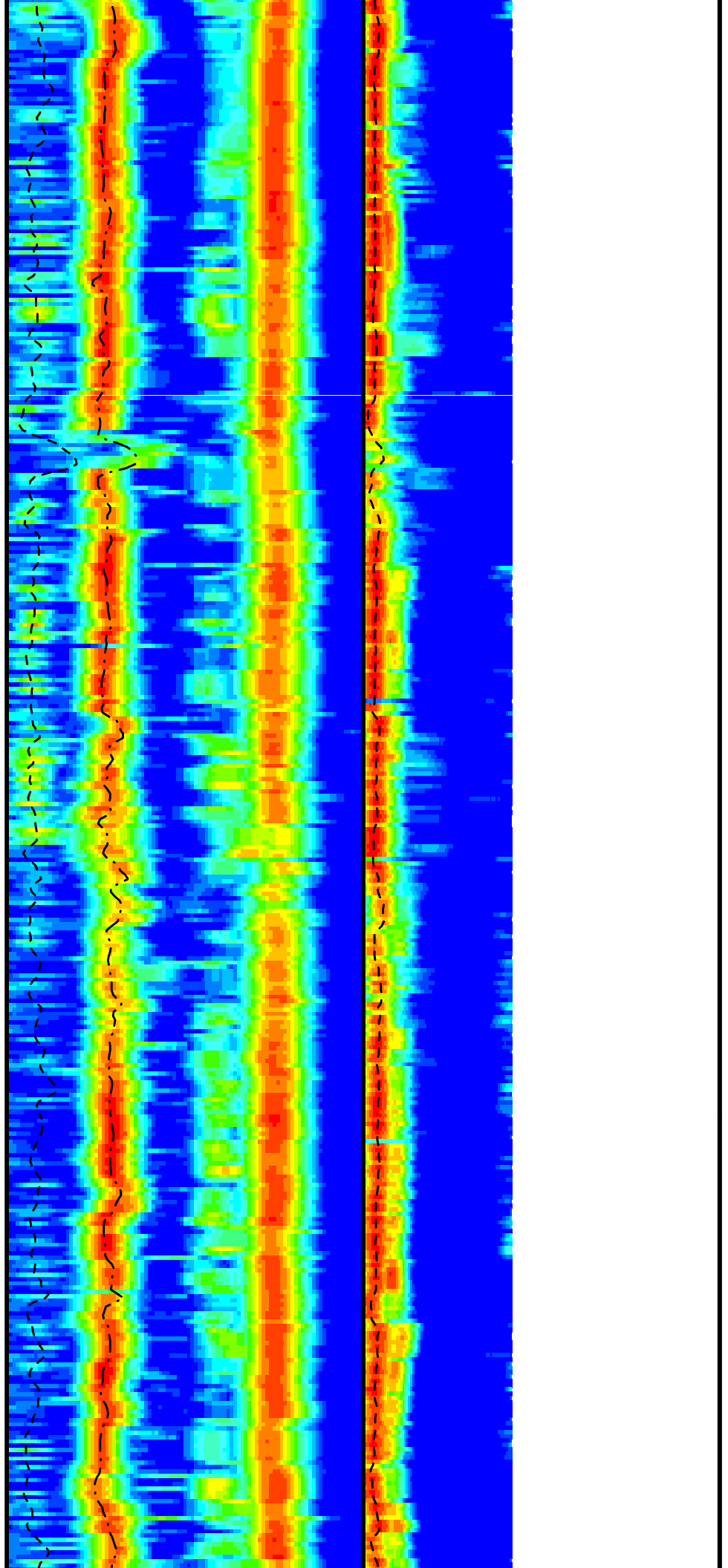


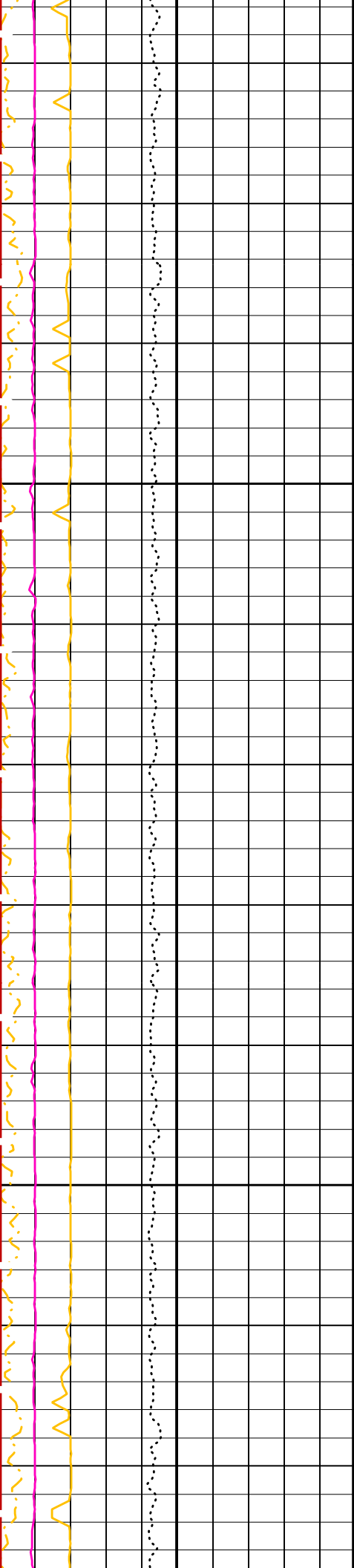




4825

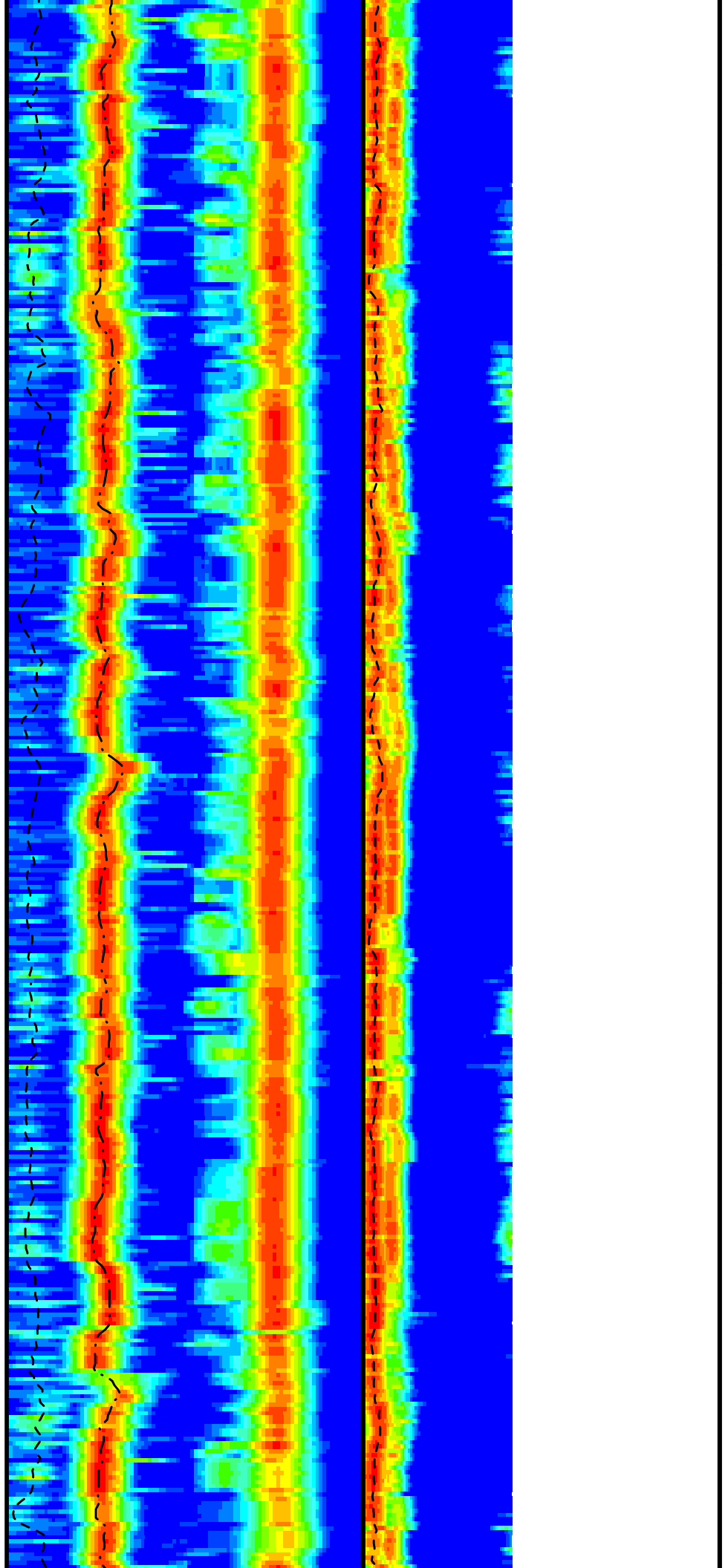
4850

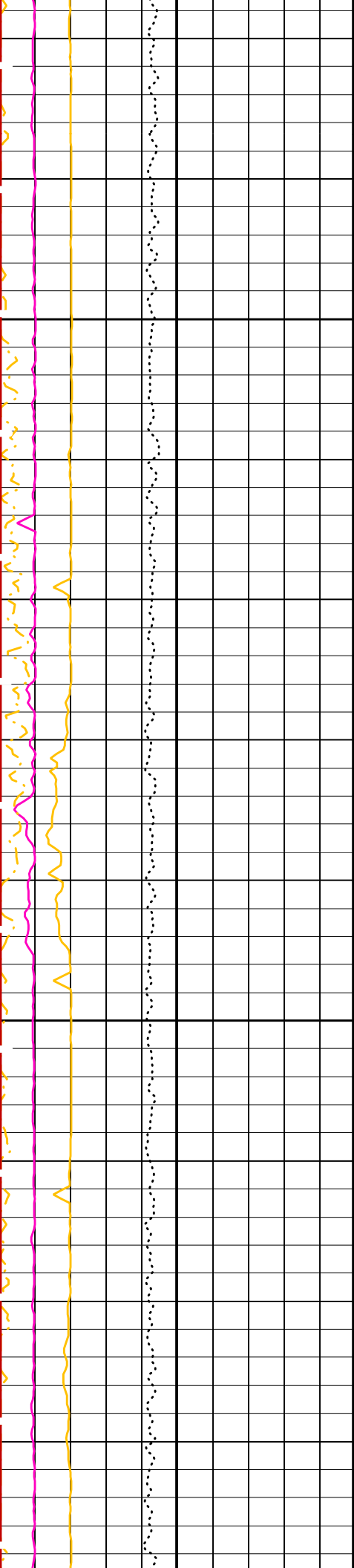




4875

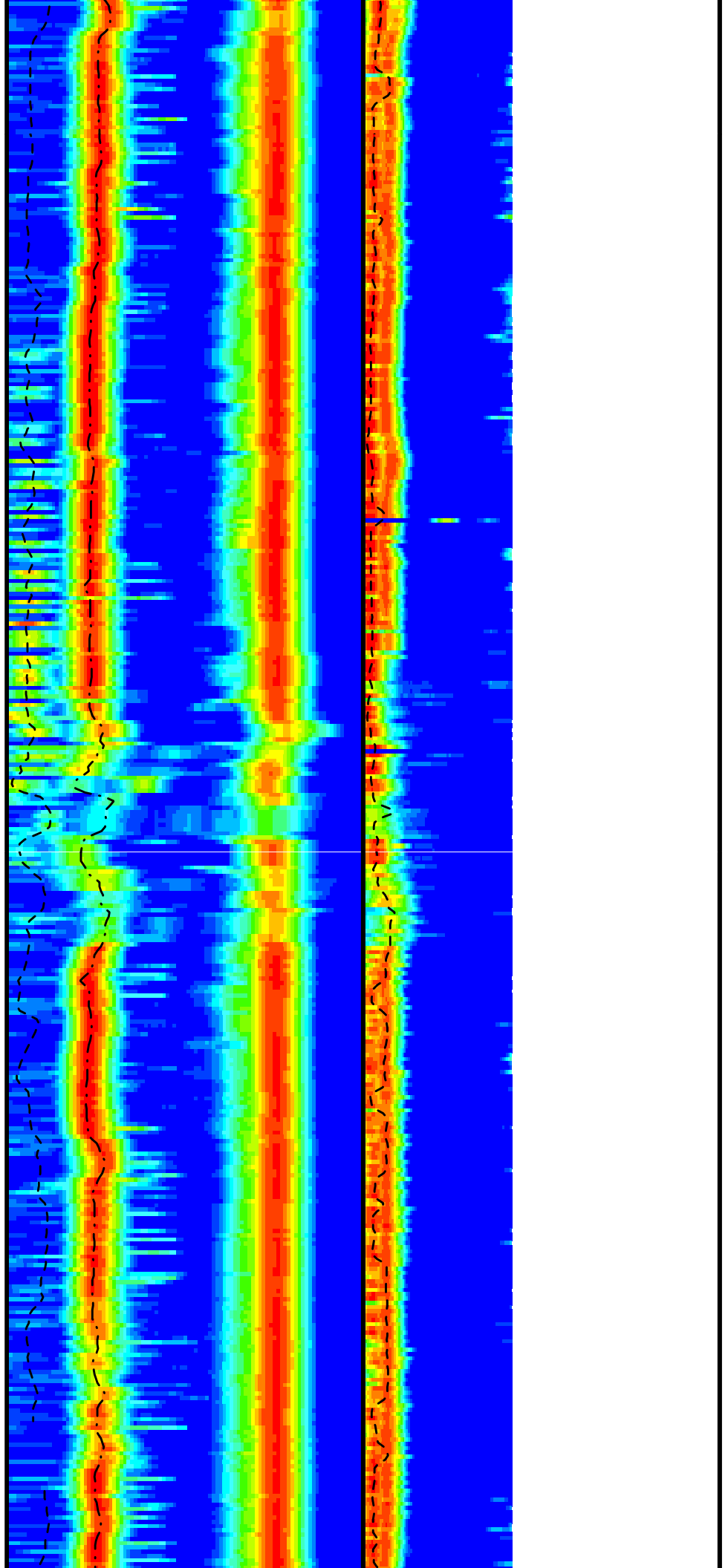
4900

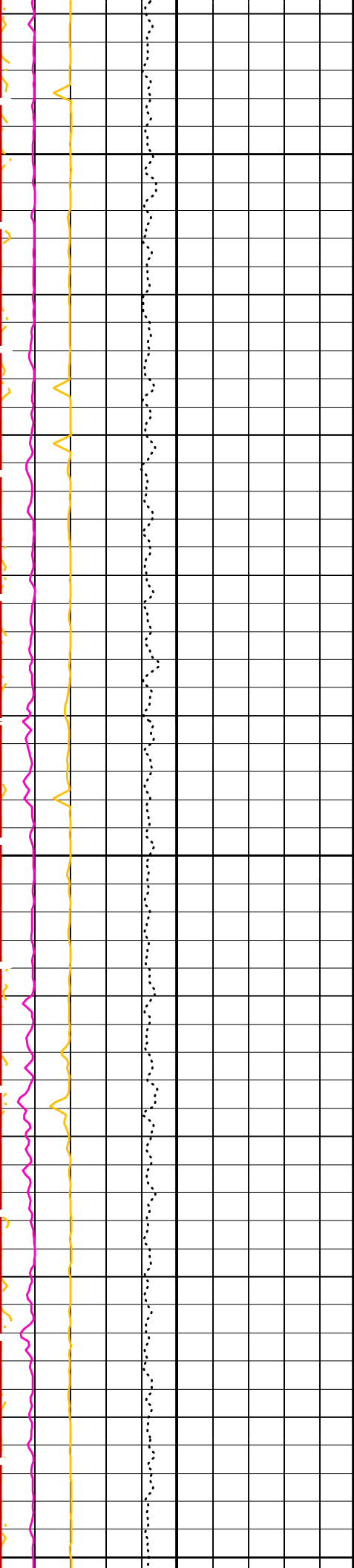




4925

4950

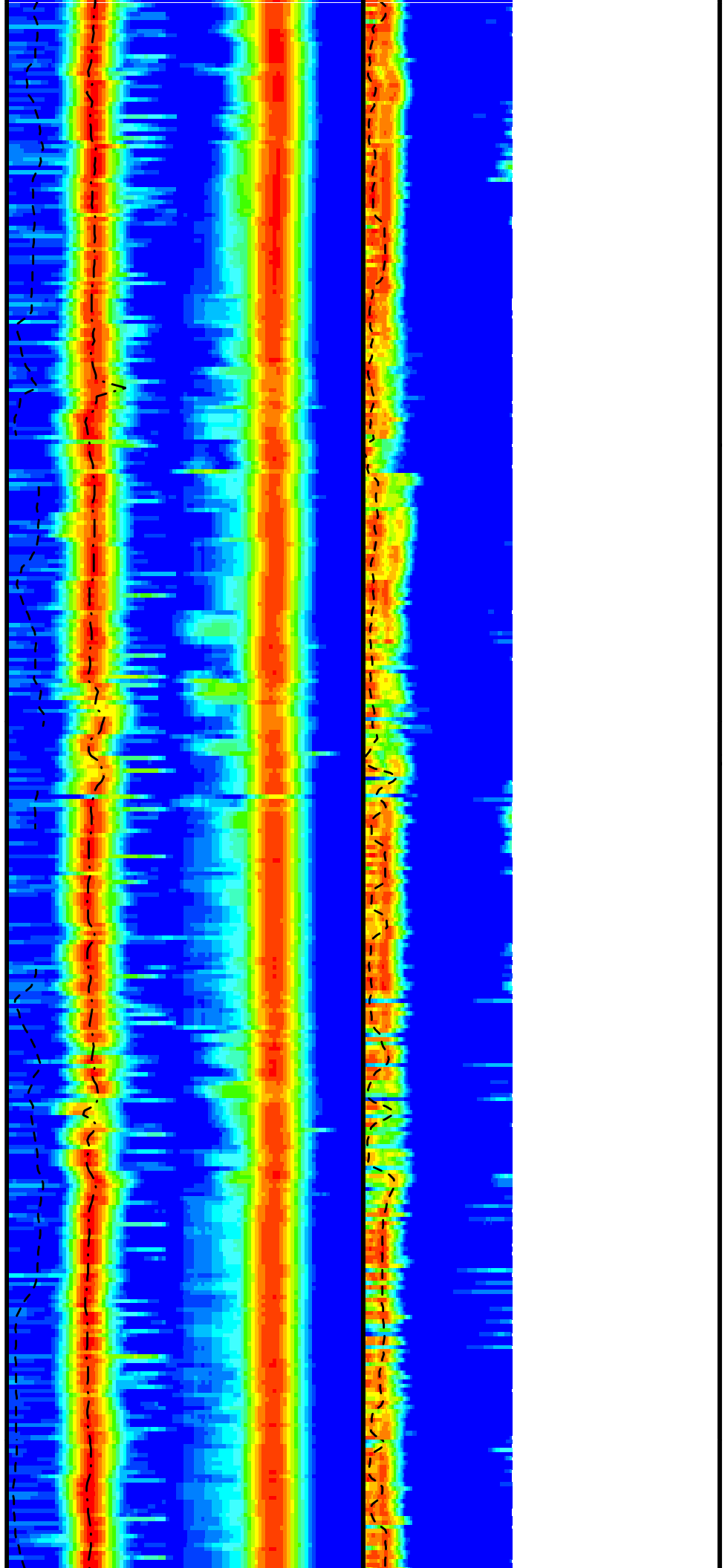


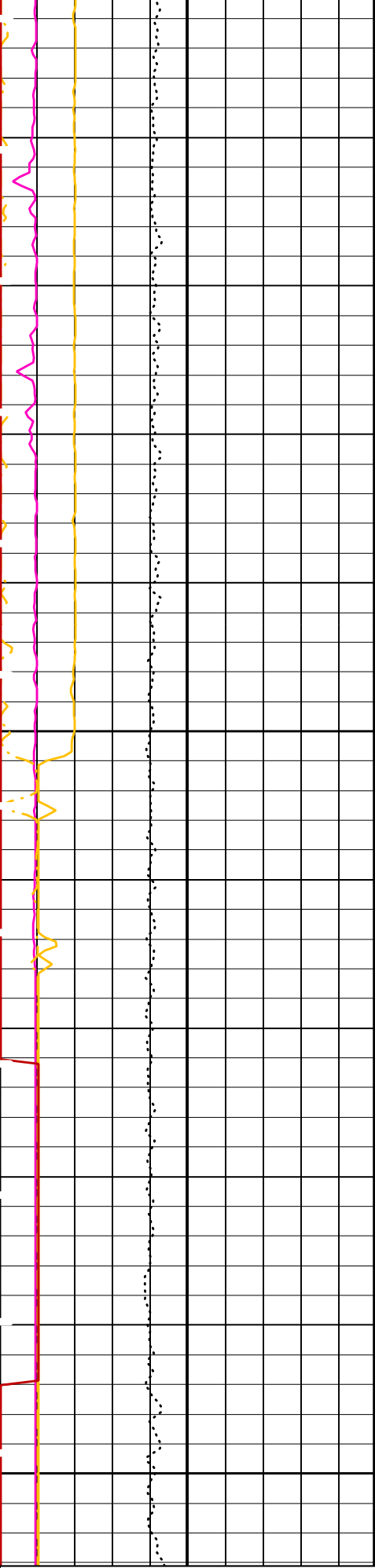


4975

5000

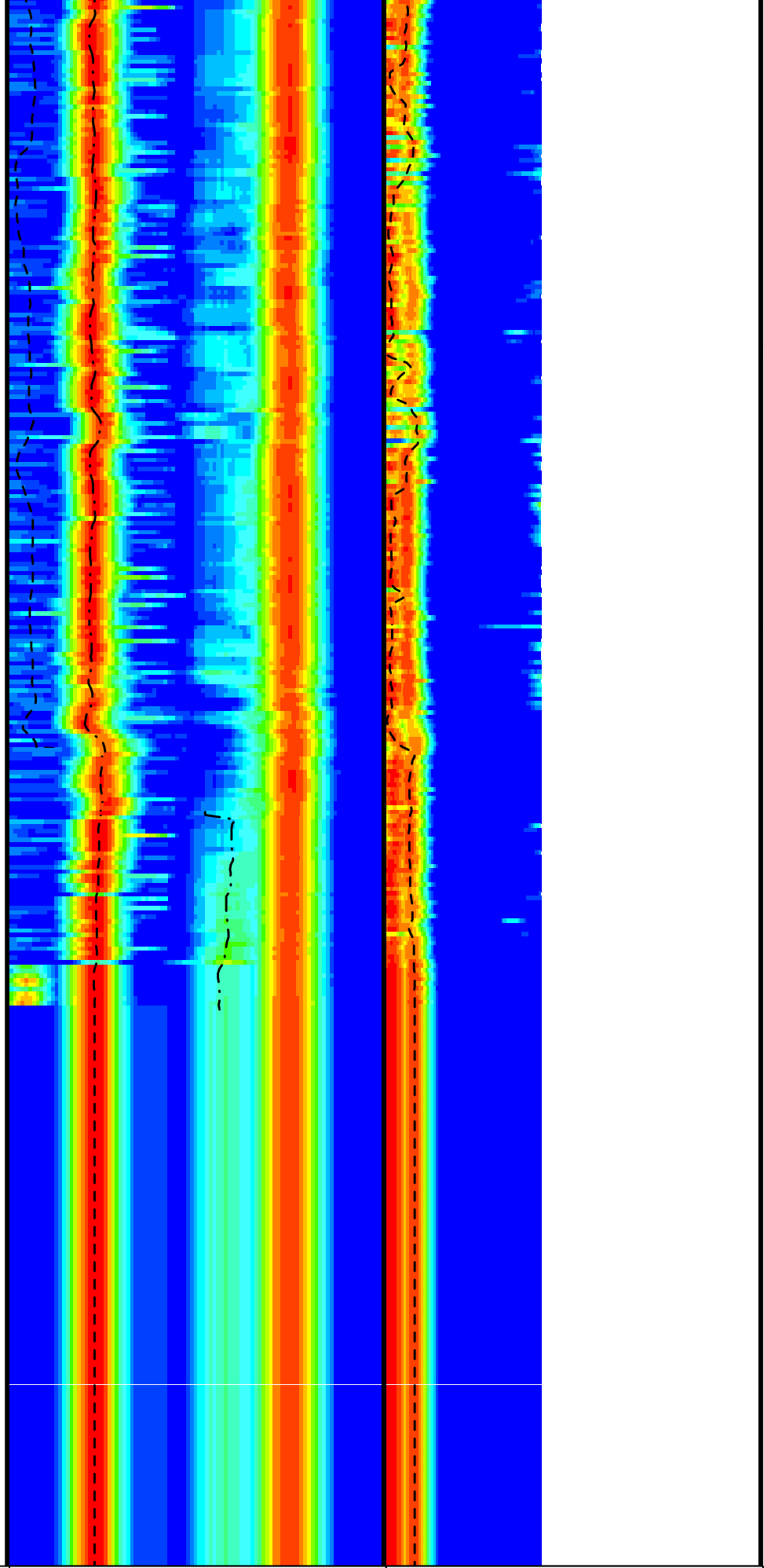
5025





5050

5075

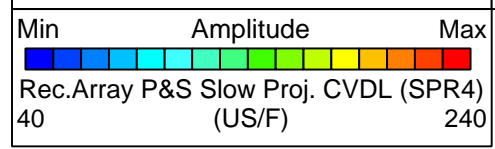
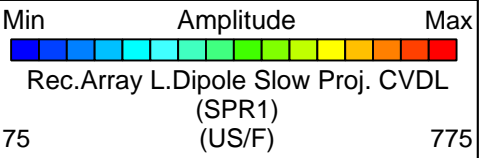
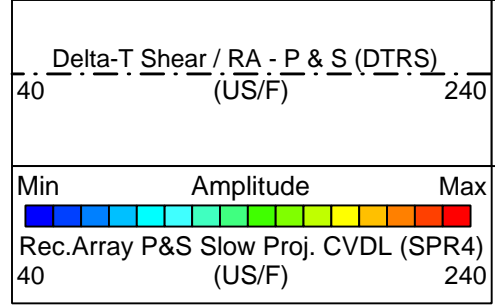


Tension (TENS)  
(LBF) 0 10000

Delta-T Comp / RA - P & S (DTRP)  
(US/F) 40 240

Delta-T Shear / RA - Lower Dipole  
(DT1R)  
(US/F) 75 775

Peak Coherence / RA - Lower Dipole (CHR1)		
0	(---)	10
Peak Coherence / RA - P & S Comp (CHRP)		
0	(---)	10
Peak Coherence / RA - P & S Shear (CHRS)		
-1	(---)	9
Waveform Data Copy Indicator 4 - Monopole P&S (WCI4)		
0	(---)	10



PIP SUMMARY

Time Mark Every 60 S

Parameters

DLIS Name	Description	Value
DSST-B: Dipole Shear Imager - B		
BHS	Borehole Status	OPEN
CASF	Label Casing Function - Monopole P&S	50
COLL	Label Slowness Lower Limit - Monopole P&S Compressional	40 US/F
COUL	Label Slowness Upper Limit - Monopole P&S Compressional	90 US/F
DDE1	Digitizing Delay 1	0 US
DDE4	Digitizing Delay 4	0 US
DDEX	Digitizing Delay X	0 US
DLCS	Label Compressional Source - Dipole Shear	USE
DSHL	Label Slowness Lower Limit - Dipole Shear	60 US/F
DSHU	Label Slowness Upper Limit - Dipole Shear	360 US/F
DSI1	Digitizer Sample Interval 1	10 US
DSI4	Digitizer Sample Interval 4	10 US
DSIX	Digitizer Sample Interval X	40 US
DTCS	Compressional Delta-T Source for DTCO Channel	PS_COMP
DTF	Delta-T Fluid	189 US/F
DWC1	Digitizer Word Count 1	512
DWC4	Digitizer Word Count 4	512
DWCX	Digitizer Word Count X	512
FILG	Label Fill Gap Control - Monopole P&S	COMP
LFC	Label Formation Character - Monopole P&S	DYNAMIC
LTXG	Lower Dipole Transmitter Geometry	156 IN
MCS	Mean Casing Slowness	57 US/F
MTXG	Monopole Transmitter Geometry	186 IN
NWI1	Number Waveform Items 1	0
NWI4	Number Waveform Items 4	8
NWIX	Number Waveform Items X	32
RSMN	Label Shear/Compressional Minimum Ratio - Monopole P&S	1.4
RSMX	Label Shear/Compressional Maximum Ratio - Monopole P&S	2.12
RX1G	Receiver 1 Geometry	294 IN
RX2G	Receiver 2 Geometry	300 IN
RX3G	Receiver 3 Geometry	306 IN
RX4G	Receiver 4 Geometry	312 IN
RX5G	Receiver 5 Geometry	318 IN
RX6G	Receiver 6 Geometry	324 IN
RX7G	Receiver 7 Geometry	330 IN
RX8G	Receiver 8 Geometry	336 IN
SAM1	DSST Sonic Acquisition Mode 1 - Lower Dipole Mode	OFF
SAM4	DSST Sonic Acquisition Mode 4 - High Frequency Monopole Mode for P&S	MFD_EVEN
SAMX	DSST Sonic Acquisition Mode X - Both Dipoles or Monopole Mode for Expert	BCR
SAS1	STC Sonic Array Status - Lower Dipole	255
SAS4	STC Sonic Array Status - Monopole P&S	255
SBO1	STC Search Band Offset - Lower Dipole	3000 US
SBO4	STC Search Band Offset - Monopole P&S	500 US
SBR4	STC Baseline Removal - Monopole P&S	ON
SBW1	STC Search Bandwidth - Lower Dipole	8000 US
SBW4	STC Search Bandwidth - Monopole P&S	2000 US
SFC1	STC Formation Character - Lower Dipole	SELECTABLE
SFC4	STC Formation Character - Monopole P&S	SELECTABLE
SFM1	STC Filter - Lower Dipole	B1-5K
SFM4	STC Filter - Monopole P&S	B3-12K
SHLL	Label Slowness Lower Limit - Monopole P&S Shear	75 US/F

SHUL	Label Slowness Upper Limit - Monopole P&S Shear	174	US/F
SLL1	STC Slowness Lower Limit - Lower Dipole	60	US/F
SLL4	STC Slowness Lower Limit - Monopole P&S	40	US/F
SST1	STC Slowness Step - Lower Dipole	4	US/F
SST4	STC Slowness Step - Monopole P&S	2	US/F
SSW1	STC Source Waveform - Lower Dipole	EVEN_IN_SAMX	
SSW4	STC Source Waveform - Monopole P&S	WF_SAM4	
STLL	Label Slowness Lower Limit - Monopole Stoneley	180	US/F
STUL	Label Slowness Upper Limit - Monopole Stoneley	780	US/F
SUL1	STC Slowness Upper Limit - Lower Dipole	360	US/F
SUL4	STC Slowness Upper Limit - Monopole P&S	240	US/F
SWD1	STC Slowness Width - Lower Dipole	40	US/F
SWD4	STC Slowness Width - Monopole P&S	10	US/F
TBF1	STC Time for Baseline Fill - Lower Dipole	0	US
TBF4	STC Time for Baseline Fill - Monopole P&S	300	US
TLL1	STC Time Lower Limit - Lower Dipole	600	US
TLL4	STC Time Lower Limit - Monopole P&S	150	US
TST1	STC Time Step - Lower Dipole	200	US
TST4	STC Time Step - Monopole P&S	50	US
TUL1	STC Time Upper Limit - Lower Dipole	11140	US
TUL4	STC Time Upper Limit - Monopole P&S	3660	US
TWD1	STC Time Width - Lower Dipole	2000	US
TWD4	STC Time Width - Monopole P&S	1000	US
TWI1	STC Integration Time Window - Lower Dipole	1600	US
TWI4	STC Integration Time Window - Monopole P&S	500	US
TWSX	Transmitter Waveform Select X	0	
WFM4	Waveform Mode 4	W1	
BHS	SGT-N: Scintillation Gamma-Ray - N Borehole Status	OPEN	
DO	System and Miscellaneous		
PP	Depth Offset for Playback	0.0	M
	Playback Processing	RECOMPUTE	

Format: DSST\_P\_S\_LOWER\_VDL\_COLOR    Vertical Scale: 1:200    Graphics File Created: 24-Dec-2005 12:39

## OP System Version: 12C0-301

MCM

UBI-A	12C0-301	GPIT-A/B	12C0-301
DTA-A	12C0-301	DSST-B	12C0-301
SGT-N	12C0-301	DTC-H	12C0-301

### Input DLIS Files

DEFAULT	UBI_DSI_072LUP	FN:83	PRODUCER	22-Dec-2005 10:53	5078.1 M	4704.9 M
---------	----------------	-------	----------	-------------------	----------	----------

### Output DLIS Files

DEFAULT	UBI_DSI_106PUP	FN:123	PRODUCER	24-Dec-2005 12:39		
REDUCED	UBI_DSI_106PUP	FN:124	PRODUCER	24-Dec-2005 12:39		



# CALIBRATIONS

## MAXIS Field Log

### Calibration and Check Summary

Measurement	Nominal	Master	Before	After	Change	Limit	Units
General Purpose Inclinometer Wellsite Calibration - CROUZET ACCELEROMETER    PROM HAS BEEN READ CORRECTLY							
Before: 22-Dec-2005 4:13							
TEMPERATURE REFERENCE :	N/A	N/A	20	N/A	N/A	N/A	DEGC
YEAR OF CALIBRATION :	N/A	N/A	99	N/A	N/A	N/A	
MONTH OF CALIBRATION :	N/A	N/A	3	N/A	N/A	N/A	

SERIAL NUMBER : N/A N/A 743 N/A N/A N/A

General Purpose Inclinerometer Wellsite Calibration - CROUZET MAGNETOMETER PROM HAS BEEN READ CORRECTLY

Before: 22-Dec-2005 4:14

TEMPERATURE REFERENCE :	N/A	N/A	25	N/A	N/A	N/A	DEGC
YEAR OF CALIBRATION :	N/A	N/A	91	N/A	N/A	N/A	
MONTH OF CALIBRATION :	N/A	N/A	5	N/A	N/A	N/A	
SERIAL NUMBER :	N/A	N/A	98	N/A	N/A	N/A	

Scintillation Gamma-Ray - N Wellsite Calibration - Detector Calibration

Before: 21-Dec-2005 20:16

Gamma Ray (Jig - Bkg)	155.5	N/A	155.5	N/A	N/A	14.14	GAPI
Gamma Ray (Calibrated)	165.0	N/A	165.0	N/A	N/A	15.00	GAPI

General Purpose Inclinerometer / Equipment Identification

Primary Equipment:	
GPIT Cartridge - A	GPIC - A
Auxiliary Equipment:	
GPIT Housing	GPIH - A

Scintillation Gamma-Ray - N / Equipment Identification

Primary Equipment:	
Scintillation Gamma Cartridge	SGC - TB
Scintillation Gamma Detector	SGD - TAA
Auxiliary Equipment:	
Scintillation Gamma Housing	SGH - K
Gamma Source Radioactive	GSR - U/Y

Scintillation Gamma-Ray - N Wellsite Calibration

Detector Calibration

Phase	Gamma Ray Background GAPI	Value	Phase	Gamma Ray (Jig - Bkg) GAPI	Value	Phase	Gamma Ray (Calibrated) GAPI	Value
Before		2.963	Before		155.5	Before		165.0
	0 (Minimum) 30.00 (Nominal) 120.0 (Maximum)			141.4 (Minimum) 155.5 (Nominal) 169.7 (Maximum)			150.0 (Minimum) 165.0 (Nominal) 180.0 (Maximum)	

Before: 21-Dec-2005 20:16

Company: Lamont Doherty



Well: Expedition 312 Site 1256D  
 Field: Superfast Spreading Crust III  
 Rig: Joides Resolution  
 Ocean: Pacific Ocean

Dipole Shear Sonic Imager

Gamma Ray